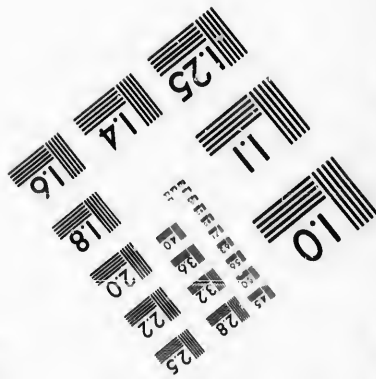
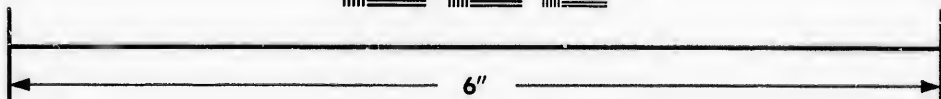
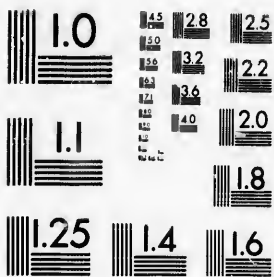


**IMAGE EVALUATION
TEST TARGET (MT-3)**



**Photographic
Sciences
Corporation**

23 WEST MAIN STREET
WEBSTER, N.Y. 14580
(716) 872-4503

15 28 25
13 22
12 20
18

**CIHM/ICMH
Microfiche
Series.**

**CIHM/ICMH
Collection de
microfiches.**



Canadian Institute for Historical Microreproductions / Institut canadien de microreproductions historiques

10

© 1987

The copy filmed here has been reproduced thanks to the generosity of:

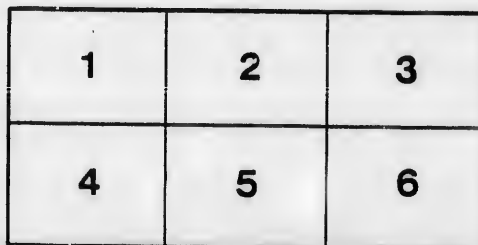
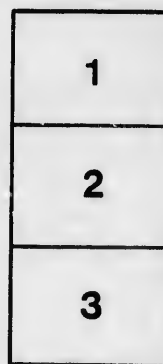
D. B. Weldon Library
University of Western Ontario
(Regional History Room)

The images appearing here are the best quality possible considering the condition and legibility of the original copy and in keeping with the filming contract specifications.

Original copies in printed paper covers are filmed beginning with the front cover and ending on the last page with a printed or illustrated impression, or the back cover when appropriate. All other original copies are filmed beginning on the first page with a printed or illustrated impression, and ending on the last page with a printed or illustrated impression.

The last recorded frame on each microfiche shall contain the symbol \rightarrow (meaning "CONTINUED"), or the symbol ∇ (meaning "END"), whichever applies.

Maps, plates, charts, etc., may be filmed at different reduction ratios. Those too large to be entirely included in one exposure are filmed beginning in the upper left hand corner, left to right and top to bottom, as many frames as required. The following diagrams illustrate the method:



L'exemplaire filmé fut reproduit grâce à la générosité de:

D. B. Weldon Library
University of Western Ontario
(Regional History Room)

Les images suivantes ont été reproduites avec le plus grand soin, compte tenu de la condition et de la netteté de l'exemplaire filmé, et en conformité avec les conditions du contrat de filmage.

Les exemplaires originaux dont la couverture en papier est imprimée sont filmés en commençant par le premier plat et en terminant soit par la dernière page qui comporte une empreinte d'impression ou d'illustration, soit par le second plat, selon le cas. Tous les autres exemplaires originaux sont filmés en commençant par la première page qui comporte une empreinte d'impression ou d'illustration et en terminant par la dernière page qui comporte une telle empreinte.

Un des symboles suivants apparaîtra sur la dernière image de chaque microfiche, selon le cas: le symbole \rightarrow signifie "A SUIVRE", le symbole ∇ signifie "FIN".

Les cartes, planches, tableaux, etc., peuvent être filmés à des taux de réduction différents. Lorsque le document est trop grand pour être reproduit en un seul cliché, il est filmé à partir de l'angle supérieur gauche, de gauche à droite, et de haut en bas, en prenant le nombre d'images nécessaire. Les diagrammes suivants illustrent la méthode.

THE LIGHT DRAFT

“BRANTFORD”

SULKY FLOW

—AND—

“Nor’-West”

SULKY GANG PLOW,

MANUFACTURED BY

COCKSHUTT PLOW CO.

LIMITED,

BRANTFORD, ONT.

The only Plow Makers in the Dominion of
Canada who have yet Sold or Exhibited
Sulky Plows of their own
Manufacture.

For Sale by

DIRECTIONS FOR FITTING BOTTOMS

—TO OUR—

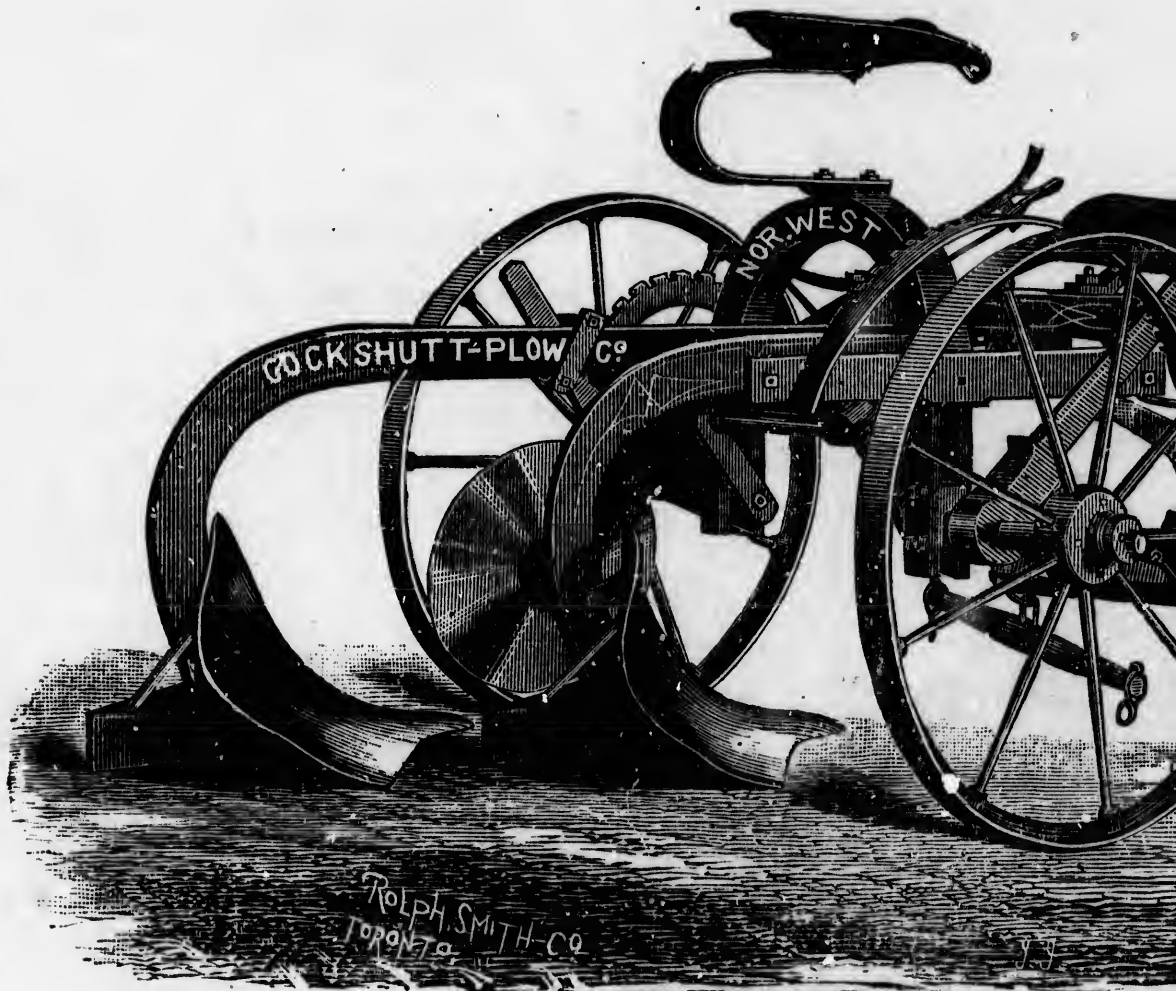
'Nor'-West' Gang.

Procure a level platform about 7 ft. x 30 in., and along one edge nail a straight strip running the entire length. Then place the beams and bottoms on the platform in such a way as to have the landside of the left-hand plow along the strip. Under the front end erect a support for the ends of the beams $8\frac{3}{4}$ inches high. See that the end of the long or left hand beam sets into the right $1\frac{1}{2}$ in. from a line with the landside. Then bolt on the other bottom and see that its landside is parallel with the strip. The plow bottoms must set level on the platform. This is for setting the turf and stubble bottoms and the only change required to set the breaker bottoms is to lower the support for the beam ends to 6 in. The plow will not work right unless these conditions are complied with.

COCKSHUTT PLOW CO., Lt'd.

Cockshutt's 'Nor-West'

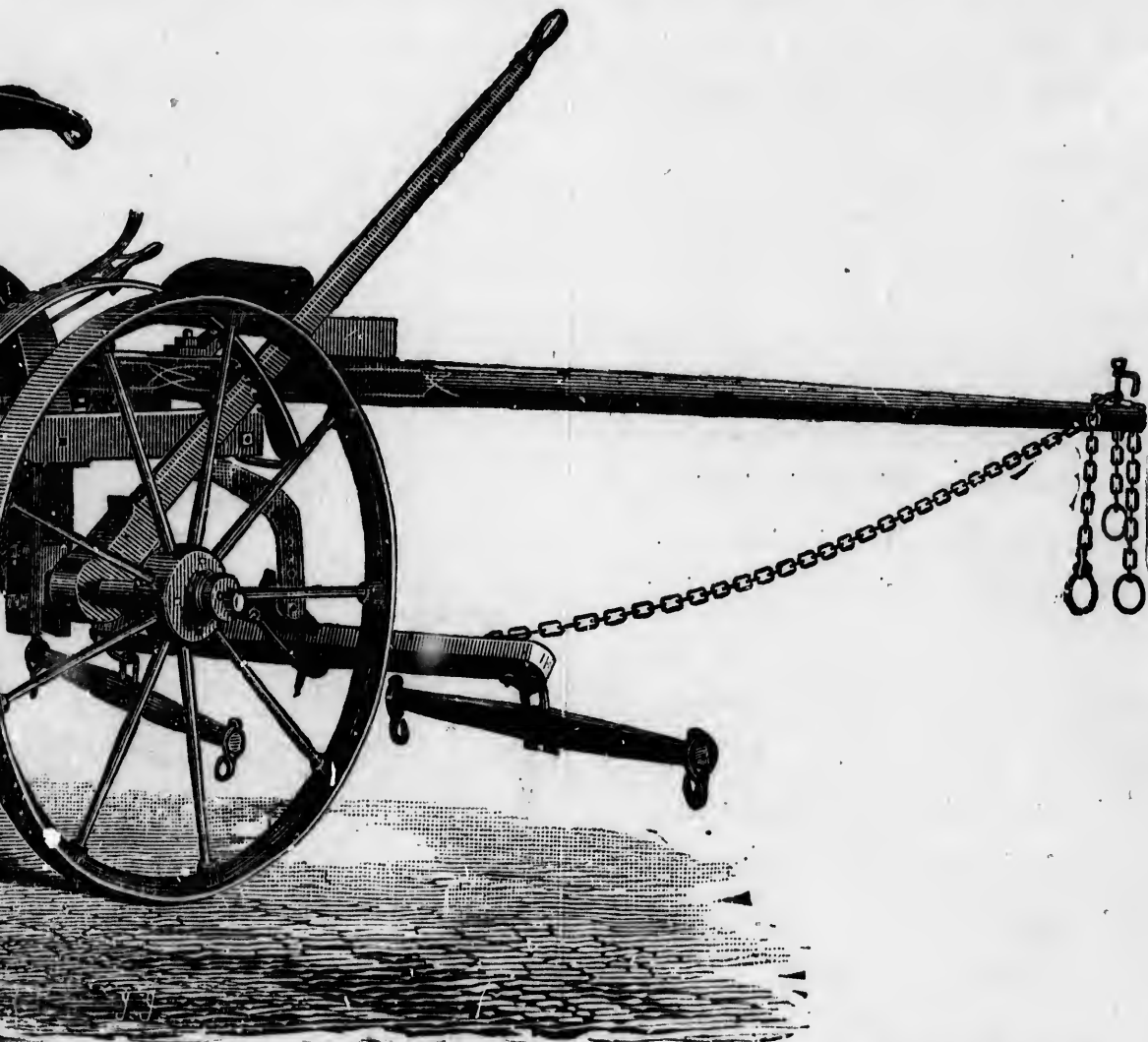
SHOWING FURROW SIDE.



ROLPH SMITH CO
TORONTO

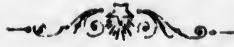
12 Inch Bottoms Rigged with Either Rolling
for either 3 or 4 H

West' Sulky Gang Plow.



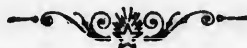
*Specially adapted for the great Wheat Farms of the
North-West.*

her Rolling Coulters or Jointers and Arranged
her 3 or 4 Horses.



The "Brantford Sulky" has the best device for lifting out of the furrows whereby the hand and the foot both assist in raising it. All complications of a *horse-power litt* are done away with and a small boy can operate it with ease.

We are now turning out plows that we are not ashamed to place along side with the best *American as equal* in every particular, viz. : Material, Finish, Temper and Working. We use the very best American steel, fit in the most careful manner, temper all the working parts and guarantee our extras to fit well. Special care is given to plows for Manitoba. We have the best facilities in the Dominion for making good Plows and give our entire attention to their manufacture only.



"E

S

CHIL



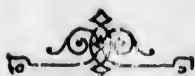
12, 14

THE
"Brantford" Sulky

SAME PATTERN AS THE "BROWNE"
MANUFACTURED WITH EITHER
GHILLED OR STEEL BOTTOMS,
ROLLING COULTERS OR JOINTERS.



12, 14 or 16 inch. cut, arranged for either
two or three horses.



We are the *Pioneer Sulky Plow Manufacturers in the Dominion*, and have sold over *eighty "Brantford Sulkies"* and *six "Nor'-West" Gangs in Ontario* during the fall of 1883, and the universal report of them is that they are giving first-class satisfaction, and those farmers who have taken pains to estimate the profits of using *sulky plows* say they effect a saving of *sixty cents* per acre over using walking plows, and a person with three horses and a 16 inch sulky can plow nearly or quite as much as two men and four horses with two walking plows and do it easier and much better, especially in hard land, and the *draft does not exceed that of a walking plow, it being fully compensated for by the decrease of friction on the bottom of the plow, because of its being carried on wheels.*

Cockshutt Plow Co., L'td.





