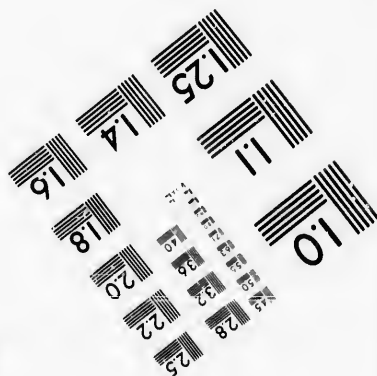
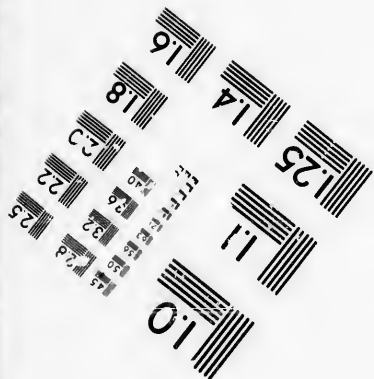
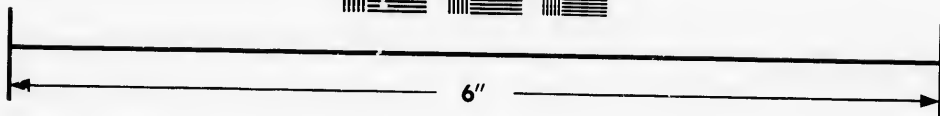
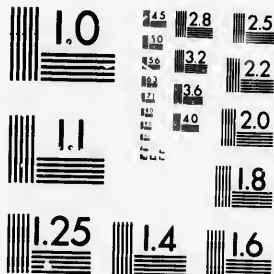


**IMAGE EVALUATION
TEST TARGET (MT-3)**



**Photographic
Sciences
Corporation**

23 WEST MAIN STREET
WEBSTER, N.Y. 14580
(716) 872-4503

10
16
18
20
22
25
28
32
36

**CIHM/ICMH
Microfiche
Series.**

**CIHM/ICMH
Collection de
microfiches.**



Canadian Institute for Historical Microreproductions / Institut canadien de microreproductions historiques

10
16
18
20
22
25
28
32
36

© 1986

Technical and Bibliographic Notes/Notes techniques et bibliographiques

The Institute has attempted to obtain the best original copy available for filming. Features of this copy which may be bibliographically unique, which may alter any of the images in the reproduction, or which may significantly change the usual method of filming, are checked below.

L'Institut a microfilmé le meilleur exemplaire qu'il lui a été possible de se procurer. Les détails de cet exemplaire qui sont peut-être uniques du point de vue bibliographique, qui peuvent modifier une image reproduite, ou qui peuvent exiger une modification dans la méthode normale de filmage sont indiqués ci-dessous.

- | | |
|--|--|
| <input type="checkbox"/> Coloured covers/
Couverture de couleur | <input type="checkbox"/> Coloured pages/
Pages de couleur |
| <input type="checkbox"/> Covers damaged/
Couverture endommagée | <input type="checkbox"/> Pages damaged/
Pages endommagées |
| <input type="checkbox"/> Covers restored and/or laminated/
Couverture restaurée et/ou pelliculée | <input type="checkbox"/> Pages restored and/or laminated/
Pages restaurées et/ou pelliculées |
| <input type="checkbox"/> Cover title missing/
Le titre de couverture manque | <input checked="" type="checkbox"/> Pages discoloured, stained or foxed/
Pages décolorées, tachetées ou piquées |
| <input type="checkbox"/> Coloured maps/
Cartes géographiques en couleur | <input type="checkbox"/> Pages detached/
Pages détachées |
| <input type="checkbox"/> Coloured ink (i.e. other than blue or black)/
Encre de couleur (i.e. autre que bleue ou noire) | <input checked="" type="checkbox"/> Showthrough/
Transparence |
| <input type="checkbox"/> Coloured plates and/or illustrations/
Planches et/ou illustrations en couleur | <input type="checkbox"/> Quality of print varies/
Qualité inégale de l'impression |
| <input type="checkbox"/> Bound with other material/
Relié avec d'autres documents | <input type="checkbox"/> Includes supplementary material/
Comprend du matériel supplémentaire |
| <input type="checkbox"/> Tight binding may cause shadows or distortion
along interior margin/
La reliure serrée peut causer de l'ombre ou de la
distorsion le long de la marge intérieure | <input type="checkbox"/> Only edition available/
Seule édition disponible |
| <input type="checkbox"/> Blank leaves added during restoration may
appear within the text. Whenever possible, these
have been omitted from filming/
Il se peut que certaines pages blanches ajoutées
lors d'une restauration apparaissent dans le texte,
mais, lorsque cela était possible, ces pages n'ont
pas été filmées. | <input type="checkbox"/> Pages wholly or partially obscured by errata
slips, tissues, etc., have been refilmed to
ensure the best possible image/
Les pages totalement ou partiellement
obscurcies par un feuillet d'errata, une pelure,
etc., ont été filmées à nouveau de façon à
obtenir la meilleure image possible. |
| <input checked="" type="checkbox"/> Additional comments: / Printed ephemera [4] p.
Commentaires supplémentaires: | |

This item is filmed at the reduction ratio checked below/
Ce document est filmé au taux de réduction indiqué ci-dessous.

10X	14X	18X	22X	26X	30X
<input type="checkbox"/>	<input type="checkbox"/>	<input type="checkbox"/>	<input type="checkbox"/>	<input type="checkbox"/>	<input type="checkbox"/>
12X	16X	20X	24X	28X	32X
<input type="checkbox"/>	<input type="checkbox"/>	<input type="checkbox"/>	<input type="checkbox"/>	<input checked="" type="checkbox"/>	<input type="checkbox"/>

The copy filmed here has been reproduced thanks to the generosity of:

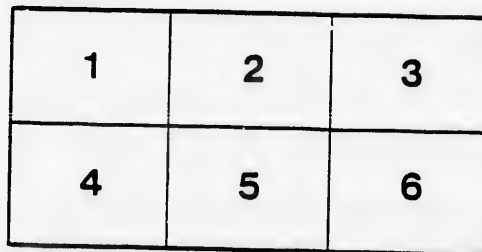
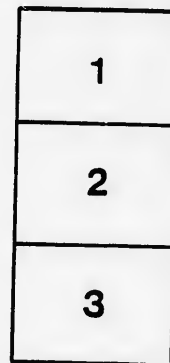
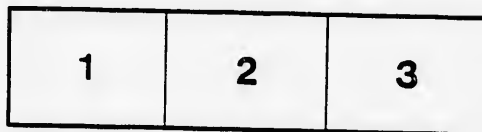
D.B. Weldon Library
University of Western Ontario
(Regional History Room)

The images appearing here are the best quality possible considering the condition and legibility of the original copy and in keeping with the filming contract specifications.

Original copies in printed paper covers are filmed beginning with the front cover and ending on the last page with a printed or illustrated impression, or the back cover when appropriate. All other original copies are filmed beginning on the first page with a printed or illustrated impression, and ending on the last page with a printed or illustrated impression.

The last recorded frame on each microfiche shall contain the symbol \rightarrow (meaning "CONTINUED"), or the symbol ∇ (meaning "END"), whichever applies.

Maps, plates, charts, etc., may be filmed at different reduction ratios. Those too large to be entirely included in one exposure are filmed beginning in the upper left hand corner, left to right and top to bottom, as many frames as required. The following diagrams illustrate the method:



L'exemplaire filmé fut reproduit grâce à la générosité de:

D.B. Weldon Library
University of Western Ontario
(Regional History Room)

Les images suivantes ont été reproduites avec le plus grand soin, compte tenu de la condition et de la netteté de l'exemplaire filmé, et en conformité avec les conditions du contrat de filmage.

Les exemplaires originaux dont la couverture en papier est imprimée sont filmés en commençant par le premier plat et en terminant soit par la dernière page qui comporte une empreinte d'impression ou d'illustration, soit par le second plat, selon le cas. Tous les autres exemplaires originaux sont filmés en commençant par la première page qui comporte une empreinte d'impression ou d'illustration et en terminant par la dernière page qui comporte une telle empreinte.

Un des symboles suivants apparaîtra sur la dernière image de chaque microfiche, selon le cas: le symbole \rightarrow signifie "A SUIVRE", le symbole ∇ signifie "FIN".

Les cartes, planches, tableaux, etc., peuvent être filmés à des taux de réduction différents. Lorsque le document est trop grand pour être reproduit en un seul cliché, il est filmé à partir de l'angle supérieur gauche, de gauche à droite, et de haut en bas, en prenant le nombre d'images nécessaire. Les diagrammes suivants illustrent la méthode.

ire
détails
es du
modifier
er une
filmage

es

rrata
to

pelure,
n à

32X

LONDON PRTS & LITHO CO.

MICHIGAN, OHIO
CANADIAN CIRCUIT

EIGHTEEN
THEATRES

CLEVELAND, CINCINNATI, BUFFALO,
DETROIT, TORONTO,
TOLEDO, LONDON, HAMILTON,
WOODSTOCK, SARINAW,
GRAND RAPIDS, BAY CITY AND
JACKSON.



C. J. WHITNEY.
LESSEE.

A. E. ROOTE.
MANAGER.

ONTARIO.



W. SMITH.

E. HOLLAND.

W. S. PARTRIDGE.

SMITH & BROS.

THE
LEADING
SANITARY
PLUMBERS
AND
HEATING
ENGINEERS
OF
WESTERN
ONTARIO.

376
RICHMOND STREET,

LONDON.

OPPOSITE GRAND OPERA HOUSE BUILDING.

A full stock of Supplies always on hand.

TELEPHONE 538.

LADIES! THE ONLY WAY TO GET HELP IS THROUGH THE "FREE PRESS" WANT COLUMN.



**Parisian
Steam
Laundry**

73 & 75 DUNDAS STREET.

BRANCH OFFICES:
226 Dundas St. 752 Waterloo. 410 Hamilton Rd.
280 " " 572 Pall Mall. 251 Wellington.
310 " " 399 Richmond. 338 Ridout.
332 " " 485 " "

J. K. SPRY, Manager.

HUESTON'S

**LIVERY,
Goupe & Cab Stables**
WELLINGTON STREET.

Finest Horses and Carriages in the City.
OPEN DAY AND NIGHT. TELEPHONE 441.

ROBT. HUESTON,
Proprietor.

H. MCKENNA,
—FOR—

**Choice Cigars, Tobaccos
AND PIPES.**

ALWAYS OPEN
..... AFTER THE OPERA.

225 DUNDAS STREET.

SPRING



1894.

We have just received the finest assortment of Spring Hats ever shown in the city. We are leaders for correct shapes, try us. A pleasure to show goods.

Rivard

LONDON'S
FASHIONABLE
HATTER AND
FURRIER

400 RICHMOND
STREET.

WILLIAMS' Pianos CANADA'S FAVORITE

Cannot be excelled for touch, singing quality, delicacy and great power of tone, with highest excellence of workmanship.

ALL THE LATEST VOCAL AND INSTRUMENTAL MUSIC RECEIVED AS PUBLISHED.

Musical Instruments of all kinds, Strings and Fittings
AT LOWEST PRICES.

R. S. WILLIAMS & SON, 171 DUNDAS STREET,
LONDON, ONT.
J. A. CRODEN, Manager.

PROGRAMME

Tuesday, April 24th.

HOYT'S

MUSICAL TRIFLE, 1894

A TRIP

TO CHINATOWN

Under the Management of FRANK McKEE.

By the author of "A Temperance Town," "A Black Sheep,"
and "A Milk White Flag."

In extenuation, the author begs to say that whatever the play
may be, it is all that is claimed for it.

(Programme continued on next page.)

SOMETHING NEW.

Opera English & Canadian
Caramels. Chocolate Creams.

VERY FINEST Olives in Bulk.
French Crystalized .. Fresh Roquefort Cheese..
FRUITS.

FITZGERALD, SCANDRETT & CO.
169 Dundas Street.

ESTABLISHED 1831.

**H. DAVIS & SON,
WATCHMAKERS**

JEWELLERS

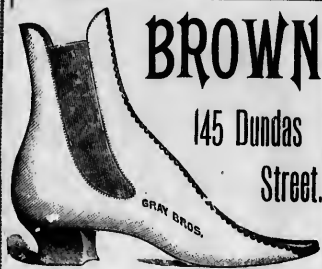
DEALERS IN
Watches, Clocks, Jewellery, Spectacles,
Silver Plated Ware, &c.

170 DUNDAS ST., LONDON, ONT.

W. T. STRONG

Dispensing
Chemist,

184 Dundas Street,
LONDON, ONTARIO.



BROWN

145 Dundas
Street.

The reputation enjoyed by Brown's
Shoe Store as the leader in
First-class, Stylish, - -

- - Fine Footwear
has been well earned.

In our 1894 SPRING and SUMMER stock
we have a large assortment of
most handsome and artistic
designs in

LADIES' AND GENTLEMEN'S
→ DRESS AND WALKING SHOES ←

We have full lines of Staple
goods of the highest grade; guar-
antee the best results, and are in a
position to sell lower than any other
house in this City.

MOTHERS SHOULD NOT FAIL TO SEE OUR
"School Boots" & "Baby Moccasins"

Experts Say: "Brown's Bicycle
and Tennis Shoes
are the best out."

Sole Agent FOR THE Celebrated Douglas Shoes.

BROWN

TELEPHONE 881.

IF YOU WANT THE BEST TAKE THE "FREE PRESS." ALL THE NEWS!

IF YOU SEE IT IN THE "LONDON FREE PRESS," IT IS SO!

— TRY —
SOUTHCOTTS
 FOR Nice Suit
 Fancy Vest
 ..OR Trousers
 NEAT LINE OF LIGHT-WEIGHT OVERCOATINGS IN STOCK.
 Satisfaction Assured. Prices Right.
361 RICHMOND STREET.

OF LATEST DESIGN
American Knots JUST OPENED
250. & 500.
 Glendowe English Collars Reduce to .. 20c.
GRAHAM BROS.

Wm. Stevely & Son,
 — THE LEADING DEALERS IN —
STOVES, RANGES,
 ..AND..
HOUSE FURNISHING GOODS.
 OUR STOCK IS THE LARGEST.
 OUR PRICES THE LOWEST.
362 RICHMOND STREET.
 'PHONE 452.

I-I-I-I-I-I-I-I-I-I

PRINTERS
 LITHOGRAPHERS
 ENGRAVERS

The
London
Printing and
Lithographing
Co'y,

SUCCESSORS TO FREE PRESS
 PRINTING AND LITHO.
 DEPARTMENTS.

OFFICE,
 "FREE PRESS"
 BUILDING.

BEST WORK
 AT MODERATE
 PRICES.

I-I-I-I-I-I-I-I-I-I

TEGUMSEH HOUSE
 LONDON.



Directly opposite G.T.R. depot;
 street railway past the doors;
 convenient to all the wholesale
 and retail business houses of
 city, making it the most desir-
 able hotel in the city; elevator,
 and heated throughout with
 steam.

Porter in attendance on
 arrival of all trains.

RATES, \$2.00 AND \$2.50
 PER DAY,

ACCORDING TO LOCATION.

No Extra Charge For Baggage.

C. W. DAVIS, PROP.

«Programme Continued.»

CAST OF CHARACTERS,

Welland Strong, a man with one foot in the grave.. Frank Lane
 Ben Gay, a wealthy San Francisco bachelor of the
 Union Club..... Edward See
 Rashleigh, { Of }..... George Sinclair
 a nephew of Ben Gay. { the }
 Norman Blood, { Bohemian }
 chum to Rashleigh.... { Club }..... Gus. P. Thomas
 Willie Grow, proposed for the Bohemian Club... Madge Deane
 Noah Heap, waiter at the Riche Restaurant..... John Braun
 Hoffman Price, manager of the Cliff House..... Ben J. Singer
 Slavin Payne, a servant of Ben Gay John Braun
 Turner Swift, who runs the ice crusher..... Frank Spangler
 Stillman..... Wm. Morse
 Tony Gay, niece of Ben Gay..... Caroline Boelene
 Isabel Dame, friend of the Gays..... Cora Tinnie
 Flirt, Mrs. Guyer's maid..... Lottie Mortimer
 Mrs. Guyer, a widow from Chicago, not too strenuous
 on culture, but makes up for it in "biff.".. Geraldine McCann

SYNOPSIS.

The scene is laid in the city of San Francisco.

ACT I.—Reception Room in the house of Ben Gay.

ACT II.—The Riche Restaurant.

ACT III.—Piazza of Cliff House, looking to-
 ward Seal Rocks.

THE MUSICAL PORTION.

ACT I.—"The Pretty Widow" (Hoyt and Gaunt); "Out
 for a Racket" (Gaunt); African Cantata, "Honey O" (Gaunt);
 "Crisp Young Chaperone" (Barton).

ACT II.—Trio Burlesque of Italian Opera (Gaunt); Medley,
 "The Ship I Love," "Flirt," "Jumbalee," "Kitty Casey,"
 "Ruben and Cynthia," "The Old Stage Door," Whistling
 extraordinary.

ACT III.—"On the Bowery" (Hoyt and Gaunt).

Scenery designed and painted by Mr. Arthur Voegtlin. Mech-
 anical effects by Mr. Matt Lynch. Properties by
 Mr. George Henry.

THE RESPONSIBLE PARTIES.

E. M. Dasher.....Business Manager	W. H. Nelson.....Musical Director
Thomas Baker.....Treasurer	Thomas Quinn.....Carpenter
Ben. J. Singer.....Stage Manager	F. Spangler.....Properties
Julian Mitchell.....General Stage Director.	

(Programme continued on last page.)

McLEAN'S HARDWARE

— FOR —

Bissell's Carpet Sweepers.

WE CAN SHOW YOU TWELVE DIFFERENT STYLES SAME
 AS ARE NOW DISPLAYED BY THE BISSSELL COM-
 PANY AT THE WORLD'S FAIR.

CALL AND SEE THESE GOODS

— AT —

McLEAN'S HARDWARE,
151 Dundas Street.

W. T. STRONG,

Dispensing
 Chemist,

184 DUNDAS ST.,
LONDON, ONT.

..FOR..

Fine Etchings....

—AND—

Engravings

—TRY—

O. B. GRAVES,

222 DUNDAS STREET.

**A WONDER-
 WORKING**



Quarter!

— IS A —

25 CENT PIECE

INVESTED
 IN **3 Elegant**

GROTTO

BOUQUET

CIGARS

OF QUALITY AND AROMA, MADE OF
 EXCELLENT

HABANA FILLER,

Very Mild and Delicious.

BRENER BROS.

LOOK OUT FOR THE "LONDON FREE PRESS" ON ALL EARLY MORNING TRAINS.

COMING

The . . .

Fencing Master

.....WITH.....

... MARIE TEMPEST, ...

And Original Company.

At the Opera Box Office.
Mrs. NEWGOLD (at the box office).—Are opera seats on sale here?

TICKET SELLER.—Yes, Ma'am.

Mrs. NEWGOLD.—Well, what night do Lohengrin and Carmen sing together?—*Chicago Record.*

As He Liked It.

UNSOPHISTICATED YOUTH (at the box office).—"I'll take two seats for to-morrow night. What are they going to play?"

TREASURER WALTERS.—"As You Like It."

U. Y.—"As I Like It? Well, if it's all the same, you can put me down for Romeo and Joolyut."—*St. Louis Republican.*

FIND YOUR FORTUNE IN LUCKY
SANTO DOMINGO

INVESTMENT BONDS guaranteed by the **SANTO DOMINGO GUARANTY CO.**

Allotments take place monthly, and are payable in U. S. gold coin in sums of **\$100,000, \$40,000, \$20,000, etc.**
5,092 Bonds paid monthly, aggregating **\$574,880.** Subscription fees, **\$10, \$5, \$2, \$1, 50c.** and **25c.**

Apply to Local Agents, or address,

ANTONIO MORA, CITY OF SANTO DOMINGO, SANTO DOMINGO.

EDY BROS.

The Artistic Photographers,

—RECEIVED—

Three First Prizes

—AND—

DIPLOMA

For Finest Display of Photography

AT WESTERN FAIR, 1893.

Cabinet Photos, \$3 per doz.

EDY BROS.,

214 DUNDAS STREET.

THE FICKLE PUBLIC.

When melodrama holds the stage,
The people for the minstrels rage.

And when the troubadours are starred,
Their fancy turns to Avon's bard.

But when the house with Shakespeare's filled,
They want to see the opera billed.

Then when the opera fills the house,
They call for farce "mit Saus and Braus."

And so it goes; and it's a race
Twixt manager and populace.

For, spite of broad and varied range
The fickle people always change.

And always quit the best to see
Some stupid meeting, billed as "Free."

«Programme Concluded.»

During the evening, incidental to the stage performance the ORCHESTRA of the Grand Opera House, under the direction of MR. FRED. L. EVANS, will perform the following selections

OVERTURE—"Norma," Bellini
POLONAISE—Wedding, Leutner
HUNGARIAN DANCES, Moszkowsky
GALOP—"Cricket," Weingarten
The above programme subject to transposition

N. B.—The Orchestra of the Grand Opera House may be secured for engagements outside the theatre, by applying at or addressing the Box Office.

The Furniture used on stage is supplied by JOHN FERGUSON & SON, Furniture Manufacturers.

NEXT * ATTRACTION.

... Tuesday, May 8th. ...

**THE AMATEUR OPERATIC ASSOCIATION
OF LONDON,**

IN THE CHARMING MILITARY
OPERA,
IN THREE ACTS,

La Grande

Duchesse. ..

COMING
ATTRACTIONS

Are always a source of interest,—
theatrical or otherwise. Our attraction just now is the new coal we are receiving daily. It comes direct from the mines, in box cars; is clean, dry, and strictly first-class. All orders, large or small, will receive our prompt and careful attention. Offices, 421 Richmond St., and 316 Burwell St. A. D. Cameron & Son.

WE call the attention of our business men to the PROGRAM as an advertising medium. It reaches the class of people whose trade you want, and the way to get that trade is to make yourself known.

BELTON & ROOTE,
BILL POSTING,
DISTRIBUTING

...AND...

GENERAL ADVERTISING AGENTS

Control all the Bill Boards and Dead Walls throughout the City. Population of City, 40,000

All orders for Bill Posting, Distributing Card Tacking, and General Advertising for Western Ontario will receive prompt attention.

OFFICE: BOX OFFICE, OPERA HOUSE.

Roses, Carnations,

Palms,

Ferns, Bulbs,

J. GAMMAGE & SONS,

213 Dundas Street.

COMING:

FRIDAY, MAY 11TH.

The Fencing Master

—WITH—

MARIE TEMPEST

And Original Company.

