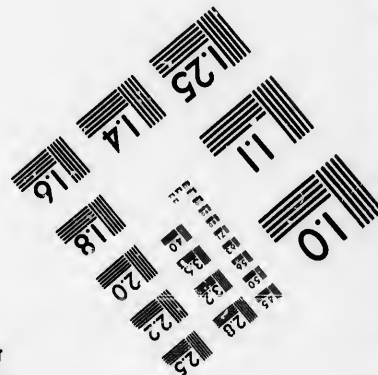
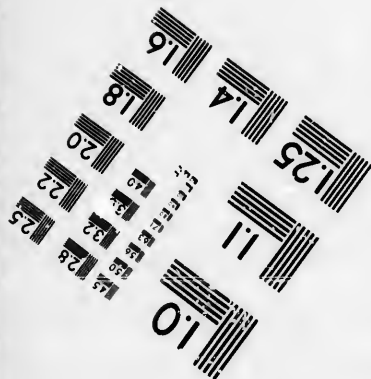
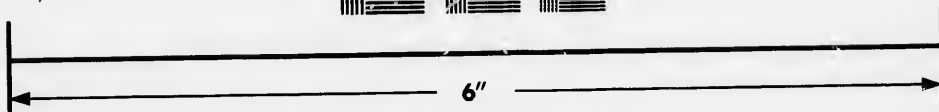
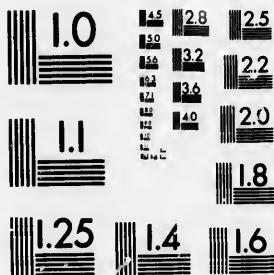


**IMAGE EVALUATION
TEST TARGET (MT-3)**



**Photographic
Sciences
Corporation**

23 WEST MAIN STREET
WEBSTER, N.Y. 14580
(716) 872-4503

14 28
18 32
22 25
20
18

**CIHM/ICMH
Microfiche
Series.**

**CIHM/ICMH
Collection de
microfiches.**



Canadian Institute for Historical Microreproductions / Institut canadien de microreproductions historiques

10
14 28
18 32

© 1985

Technical and Bibliographic Notes/Notes techniques et bibliographiques

The Institute has attempted to obtain the best original copy available for filming. Features of this copy which may be bibliographically unique, which may alter any of the images in the reproduction, or which may significantly change the usual method of filming, are checked below.

L'Institut a microfilmé le meilleur exemplaire qu'il lui a été possible de se procurer. Les détails de cet exemplaire qui sont peut-être uniques du point de vue bibliographique, qui peuvent modifier une image reproduite, ou qui peuvent exiger une modification dans la méthode normale de filmage sont indiqués ci-dessous.

- Coloured covers/
Couverture de couleur
- Covers damaged/
Couverture endommagée
- Covers restored and/or laminated/
Couverture restaurée et/ou pelliculée
- Cover title missing/
Le titre de couverture manque
- Coloured maps/
Cartes géographiques en couleur
- Coloured ink (i.e. other than blue or black)/
Encre de couleur (i.e. autre que bleue ou noire)
- Coloured plates and/or illustrations/
Planches et/ou illustrations en couleur
- Found with other material/
Relié avec d'autres documents
- Tight binding may cause shadows or distortion along interior margin/
La reliure serrée peut causer de l'ombre ou de la distortion le long de la marge intérieure
- Blank leaves added during restoration may appear within the text. Whenever possible, these have been omitted from filming/
Il se peut que certaines pages blanches ajoutées lors d'une restauration apparaissent dans le texte, mais, lorsque cela était possible, ces pages n'ont pas été filmées.
- Additional comments:
Commentaires supplémentaires:

- Coloured pages/
Pages de couleur
- Pages damaged/
Pages endommagées
- Pages restored and/or laminated/
Pages restaurées et/ou pelliculées
- Pages discoloured, stained or foxed/
Pages décolorées, tachetées ou piquées
- Pages detached/
Pages détachées
- Showthrough/
Transparence
- Quality of print varies/
Qualité inégale de l'impression
- Includes supplementary material/
Comprend du matériel supplémentaire
- Only edition available/
Seule édition disponible
- Pages wholly or partially obscured by errata slips, tissues, etc., have been refilmed to ensure the best possible image/
Les pages totalement ou partiellement obscurcies par un feuillet d'errata, une pelure, etc., ont été filmées à nouveau de façon à obtenir la meilleure image possible.

[Printed ephemera] 1 sheet (verso blank)

This item is filmed at the reduction ratio checked below/
Ce document est filmé au taux de réduction indiqué ci-dessous.

10X	12X	14X	16X	18X	20X	22X	24X	26X	28X	30X	32X
<input type="checkbox"/>	<input type="checkbox"/>	<input type="checkbox"/>	<input type="checkbox"/>	<input type="checkbox"/>	<input type="checkbox"/>	<input type="checkbox"/>	<input type="checkbox"/>	<input checked="" type="checkbox"/>	<input type="checkbox"/>	<input type="checkbox"/>	<input type="checkbox"/>

The copy filmed here has been reproduced thanks to the generosity of:

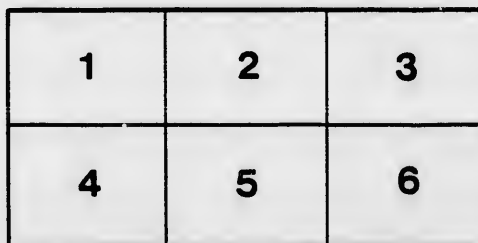
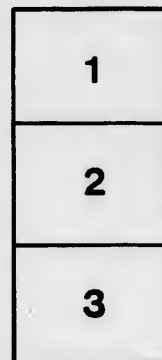
D. B. Weldon Library
University of Western Ontario
(Regional History Room)

The images appearing here are the best quality possible considering the condition and legibility of the original copy and in keeping with the filming contract specifications.

Original copies in printed paper covers are filmed beginning with the front cover and ending on the last page with a printed or illustrated impression, or the back cover when appropriate. All other original copies are filmed beginning on the first page with a printed or illustrated impression, and ending on the last page with a printed or illustrated impression.

The last recorded frame on each microfiche shall contain the symbol \rightarrow (meaning "CONTINUED"), or the symbol ∇ (meaning "END"), whichever applies.

Maps, plates, charts, etc., may be filmed at different reduction ratios. Those too large to be entirely included in one exposure are filmed beginning in the upper left hand corner, left to right and top to bottom, as many frames as required. The following diagrams illustrate the method:



L'exemplaire filmé fut reproduit grâce à la générosité de:

D. B. Weldon Library
University of Western Ontario
(Regional History Room)

Les images suivantes ont été reproduites avec le plus grand soin, compte tenu de la condition et de la netteté de l'exemplaire filmé, et en conformité avec les conditions du contrat de filmage.

Les exemplaires originaux dont la couverture en papier est imprimée sont filmés en commençant par le premier plat et en terminant soit par la dernière page qui comporte une empreinte d'impression ou d'illustration, soit par le second plat, selon le cas. Tous les autres exemplaires originaux sont filmés en commençant par la première page qui comporte une empreinte d'impression ou d'illustration et en terminant par la dernière page qui comporte une telle empreinte.

Un des symboles suivants apparaîtra sur la dernière image de chaque microfiche, selon le cas: le symbole \rightarrow signifie "A SUIVRE", le symbole ∇ signifie "FIN".

Les cartes, planches, tableaux, etc., pouvant être filmés à des taux de réduction différents. Lorsque le document est trop grand pour être reproduit en un seul cliché, il est filmé à partir de l'angle supérieur gauche, de gauche à droite, et de haut en bas, en prenant le nombre d'images nécessaire. Les diagrammes suivants illustrent la méthode.

rrata
to

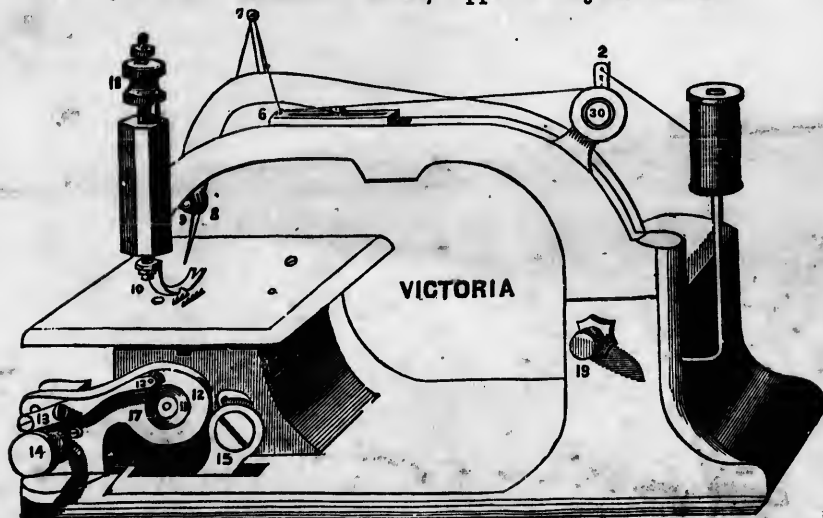
pelure,
n à



32X

Directions for Using S. BROWN'S Victoria Sewing Machine.

OFFICE: Richmond Street, Opposite Crystal Block.



GENERAL DIRECTIONS.

The Machine must be kept clean, and oiled with the best Sperm Oil once for every ten hours use. Always run the Machine in the direction from the operator. Always have the presser foot raised when there is nothing under it, to prevent it being scratched by the feeder. Never pull or detain the work while it is passing through the Machine. Never take the Machine apart otherwise than is herein directed. Take care of the bobbins, that they do not get scratched or bent; and insert nothing in them to pick out the thread but the thread-picker which accompanies the Machine.

SPECIAL DIRECTIONS.

1. **BELTING AND OILING THE MACHINE.**—Raise the needle to its full height; remove the cloth plate by taking out the two screws seen on the top. You will then observe two divisions in the frame containing the work. In the left division will be seen the lower end of the needle arm, and a small hole in it for the purpose of oiling. On either side of the division is a groove running down to the shaft for the purpose of oiling it. By the side of the small belt pulley is a cam, upon which rests the feeder; a few drops of oil must be put upon it. Each side of the feeder must be oiled, where it works in the long guide way. To the right of the machine is the Hook 15; it must be oiled at both joints. At the back part of the machine are two cast-iron bolts, 19, upon which the needle arm vibrates. These must be oiled occasionally where they enter the needle arm. All the wearing parts of the treadle and stand must be oiled. When the belt is removed, it can only be replaced by taking off the cloth plate. When the belt gets too loose, cut off a small piece, and make a new hole for the belt hook.
2. **TREADING THE MACHINE.**—Place the spool on the pin 1, pass the thread through the guide 2, thence once around the grooved wheel so that it will come off from the top as seen in the diagram; thence through the eye in the slide 6; thence through the small post 7; thence through the eye of needle bolt 9, and then through the needle, leaving an end about three inches long.
3. **WINDING THE BOBBIN.**—Place the Bobbin on the spindle of the spool attached to the under part of the table. Throw off the leather belt from the driving pulley, and replace with the small cord, passing it over the spooler. Secure the end of thread in the bobbin by passing it two or three times around; then hold the spool in the hand on the wire pin which accompanies the Machine, and operate the treadle until the bobbin is filled. Have the thread in the bobbin at least one size smaller than the top thread for general work. Wind the thread tight in the bobbin, so as to have it contain as much as possible.
4. **PLACING THE BOBBIN AND ITS THREAD.**—17 is the bobbin case, to open which you will turn the nut 14 towards the operator, and insert the bobbin at the opposite end, at 12, so that the thread will run off from the top, leaving about two inches resting on the top of the case, and the end hanging over at 13. Hold the bobbin in its place with the left hand, while the nut 14 is tightened with the right hand. The bobbin is taken out with the thumb of the left hand, after the nut 14 is loosened. Always in putting in the bobbin bring the hook 15 to its lowest point, so as to be on the way. 13 is a spring on the side of the case, in one end of which is a pin resting on the bobbin; and it must rest very lightly, just enough to keep it steady, and give a slight tension. The pressure can be adjusted by means of the second screw, but it seldom wants altering, as it is properly adjusted at the Factory. If the bobbin should not be large enough to let the thread pass round free, loosen the case and turn the small screw under the spring 13 until it projects on the inside sufficient to prevent the case from closing quite so much. This screw is very seldom required to be altered, and only when very large thread is used.
5. **THE TENSION.**—30 is the tension, and a certain degree of tension on the thread must be made to commence with. Turning the nut 30 to the right tightens the stitch, and the opposite loosens. If the tension is too tight the thread will break, and if not tight enough the stitches will be loose. The operator must regulate accordingly.
6. **SETTING THE NEEDLE.**—At 8 is the needle bolt, and 9 is the nut to tighten it. Take the small wrench, and placing it on the nut 9, and turning towards the operator, the bolt will be loose. Turn in the opposite direction to tighten. The needle is inserted in the hole through the bolt, next to the arm; have the arm raised to its full height; put the needle in the hole from the top, and secure it at the shank; turn the machine gently, and if the needle strikes the plate take the large wrench and place the small notch of it on the flat part of the bolt, and so turn it until the needle enters the hole in the cloth plate. It will be observed that all the needles are curved, and on one side is a long groove, on the other is a short one. The hollow of the curve must be toward the rear of the Machine—the long groove to the left of the operator. Set the needle so that the point of the hook 15 will be about a sixteenth of an inch above the eye of the needle when it passes it. Care should be taken not to blunt the point of the needle, nor let it incline towards the hook 15 so much as to come in contact with it or the bobbin case. If the needles should so incline after they are properly fastened, they can be straightened by means of the notch in the small wrench, taking hold of the needle at or near the shank.
7. **THE PRESSER SEEN NEEDLES TO BE USED.**—For sewing Woolen cloth, or other heavy material with coarse thread, the largest needle must be used. Quilting, or sewing fine silk goods with fine thread or silk, No. 1 or 2 needles should be used. For fine linen with very fine cotton, such as 70 or 80, the No. 0 and No. 1 should be used. Never attempt to sew with a fine needle and coarse thread, or with a coarse needle and fine thread. In selecting sewing cotton, get those kinds that are most free from knots and uneven places.
8. **PLACING THE WORK TO BE SEWN.**—Raise the needle to its full height—raise the presser foot 10 by the lifter 9, giving the knob a slight turn round, which will secure the presser foot in its position. Adjust the work in its proper place, then let drop the presser foot by turning round the lifter 9 until the pin in it enters the hole in the arm; pull off about three inches of thread and hold in the right hand, turning the balance wheel under the table with the left hand until a few stitches are made, taking care that the wheel does not turn backwards when the hand is removed, or the thread will become entangled and break. In taking out the work, first raise the needle by means of turning the wheel with the left hand, then pull off enough thread to start again and cut it; then raise the presser foot, take out the work and cut off the thread.
9. **BEAKING OFF THREAD.**—See that the needle is low enough so that the hook 15 will not cut it at the eye when entering the loop. If the thread is uneven and knotty, and of a very inferior quality, or too large for the needle, it will break. See that it unwinds freely from the spool, and does not catch or tangle around the spool. If there is too great tension, or if the needle should be sharp in the eye, the thread will break and the needle eye should be polished out with a thread.
10. **THE GAUGE.**—Along with the Machine will be found a gauge, which can be fastened to the cloth plate with the round headed screw. The Gauge is placed at any desired distance from the presser foot and made fast, then the work is held up to it as it passes along. Parallel seams of any width apart can be stitched with the greatest accuracy.
11. **REGULATING THE STITCH.**—Under the cloth plate, at the front of the Machine, is a small lever handle. By raising it the stitch is lengthened, and by pushing it downward the stitch is shortened. Observe that the lever is not so low down as to entirely prevent the goods from being carried along.
12. **REMARKS.**—Should the end of the bobbin thread get broken off inside, take the thread picker and pull it out and re-wind, unless it can be got out by blowing into the bobbin. In the presser foot will be found a long slot just in advance of the needle; this is for the purpose of seeing the edge of the seam and guiding it by. Sometimes, owing to carelessness in putting on the belt, it will ride over on to the cam, and prevent the machine from turning. Remove the plate and run it back. Should the needle arm become loose on the centres 18, take the large wrench, loose the jam nuts, and then take the wire pin and screw the centres in until there is no side motion to the arm, then tighten up the Jam nuts again.

"City Press" Print.

S. BROWN, Proprietor.

976.1.68

