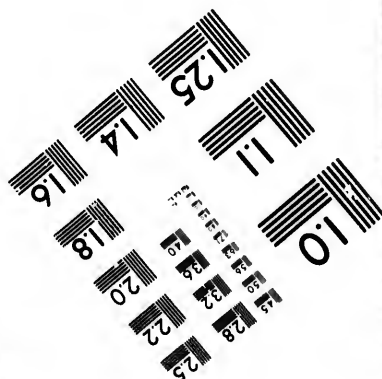
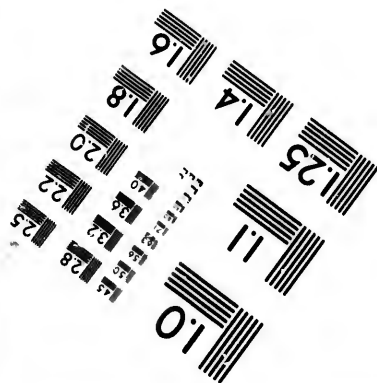
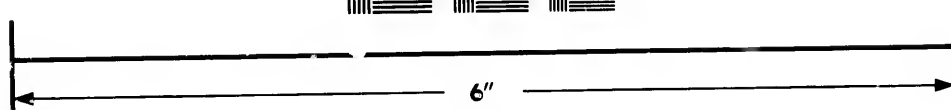
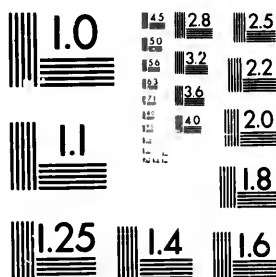


IMAGE EVALUATION TEST TARGET (MT-3)



Photographic Sciences Corporation

**23 WEST MAIN STREET
WEBSTER, N.Y. 14580
(716) 872-4503**

**CIHM/ICMH
Microfiche
Series.**

**CIHM/ICMH
Collection de
microfiches.**



Canadian Institute for Historical Microreproductions / Institut canadien de microreproductions historiques

© 1982

Technical and Bibliographic Notes/Notes techniques et bibliographiques

The Institut has attempted to obtain the best original copy available for filming. Features of this copy which may be bibliographically unique, which may alter any of the images in the reproduction, or which may significantly change the usual method of filming, are checked below.

L'Institut a microfilmé le meilleur exemplaire qu'il lui a été possible de se procurer. Les détails de cet exemplaire qui sont peut-être uniques du point de vue bibliographique, qui peuvent modifier une image reproduite, ou qui peuvent exiger une modification dans la méthode normale de filmage sont indiqués ci-dessous.

- ☒ Coloured covers/
Couverture de couleur
- ☐ Covers damaged/
Couverture endommagée
- ☐ Covers restored and/or laminated/
Couverture restaurée et/ou pelliculée
- ☐ Cover title missing/
Le titre de couverture manque
- ☐ Coloured maps/
Cartes géographiques en couleur
- ☐ Coloured ink (i.e. other than blue or black)/
Encre de couleur (i.e. autre que bleue ou noire)
- ☐ Coloured plates and/or illustrations/
Planches et/ou illustrations en couleur
- ☐ Bound with other material/
Relié avec d'autres documents
- ☐ Tight binding may cause shadows or distortion
along interior margin/
La reliure serrée peut causer de l'ombre ou de la
distortion le long de la marge intérieure
- ☐ Blank leaves added during restoration may
appear within the text. Whenever possible, these
have been omitted from filming/
Il se peut que certaines pages blanches ajoutées
lors d'une restauration apparaissent dans le texte,
mais, lorsque cela était possible, ces pages n'ont
pas été filmées.
- ☐ Additional comments:/
Commentaires supplémentaires:

- ☐ Coloured pages/
Pages de couleur
- ☐ Pages damaged/
Pages endommagées
- ☐ Pages restored and/or laminated/
Pages restaurées et/ou pelliculées
- ☐ Pages discoloured, stained or foxed/
Pages décolorées, tachetées ou piquées
- ☐ Pages detached/
Pages détachées
- ☒ Showthrough/
Transparence
- ☐ Quality of print varies/
Qualité inégale de l'impression
- ☐ Includes supplementary material/
Comprend du matériel supplémentaire
- ☐ Only edition available/
Seule édition disponible
- ☐ Pages wholly or partially obscured by errata
slips, tissues, etc., have been refilmed to
ensure the best possible image/
Les pages totalement ou partiellement
obscurcies par un feuillet d'errata, une pelure,
etc., ont été filmées à nouveau de façon à
obtenir la meilleure image possible.

- ☐ This item is filmed at the reduction ratio checked below/
Ce document est filmé au taux de réduction indiqué ci-dessous.

10X	14X	18X	22X	26X	30X
<input type="checkbox"/>	<input type="checkbox"/>	<input type="checkbox"/>	<input checked="" type="checkbox"/>	<input type="checkbox"/>	<input type="checkbox"/>
12X	16X	20X	24X	28X	32X

The copy filmed here has been reproduced thanks to the generosity of:

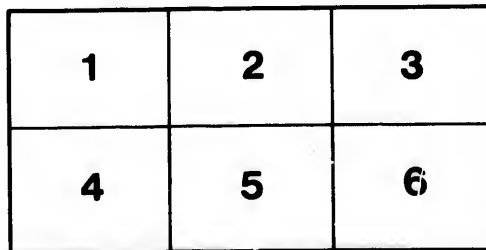
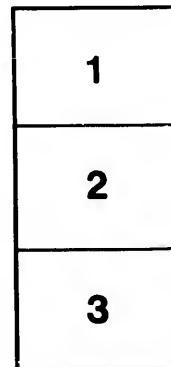
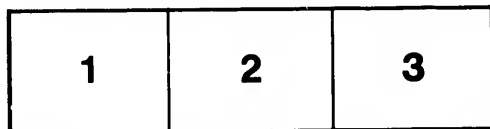
Metropolitan Toronto Library
Canadian History Department

The images appearing here are the best quality possible considering the condition and legibility of the original copy and in keeping with the filming contract specifications.

Original copies in printed paper covers are filmed beginning with the front cover and ending on the last page with a printed or illustrated impression, or the back cover when appropriate. All other original copies are filmed beginning on the first page with a printed or illustrated impression, and ending on the last page with a printed or illustrated impression.

The last recorded frame on each microfiche shall contain the symbol \longrightarrow (meaning "CONTINUED"), or the symbol ∇ (meaning "END"), whichever applies.

Maps, plates, charts, etc., may be filmed at different reduction ratios. Those too large to be entirely included in one exposure are filmed beginning in the upper left hand corner, left to right and top to bottom, as many frames as required. The following diagrams illustrate the method:



L'exemplaire filmé fut reproduit grâce à la générosité de:

Metropolitan Toronto Library
Canadian History Department

Les images suivantes ont été reproduites avec le plus grand soin, compte tenu de la condition et de la netteté de l'exemplaire filmé, et en conformité avec les conditions du contrat de filmage.

Les exemplaires originaux dont la couverture en papier est imprimée sont filmés en commençant par le premier plat et en terminant soit par la dernière page qui comporte une empreinte d'impression ou d'illustration, soit par le second plat, selon le cas. Tous les autres exemplaires originaux sont filmés en commençant par la première page qui comporte une empreinte d'impression ou d'illustration et en terminant par la dernière page qui comporte une telle empreinte.

Un des symboles suivants apparaîtra sur la dernière image de chaque microfiche, selon le cas: le symbole \longrightarrow signifie "A SUIVRE", le symbole ∇ signifie "FIN".

Les cartes, planches, tableaux, etc., peuvent être filmés à des taux de réduction différents. Lorsque le document est trop grand pour être reproduit en un seul cliché, il est filmé à partir de l'angle supérieur gauche, de gauche à droite, et de haut en bas, en prenant le nombre d'images nécessaire. Les diagrammes suivants illustrent la méthode.

errata
to

pelure,
en à



32X

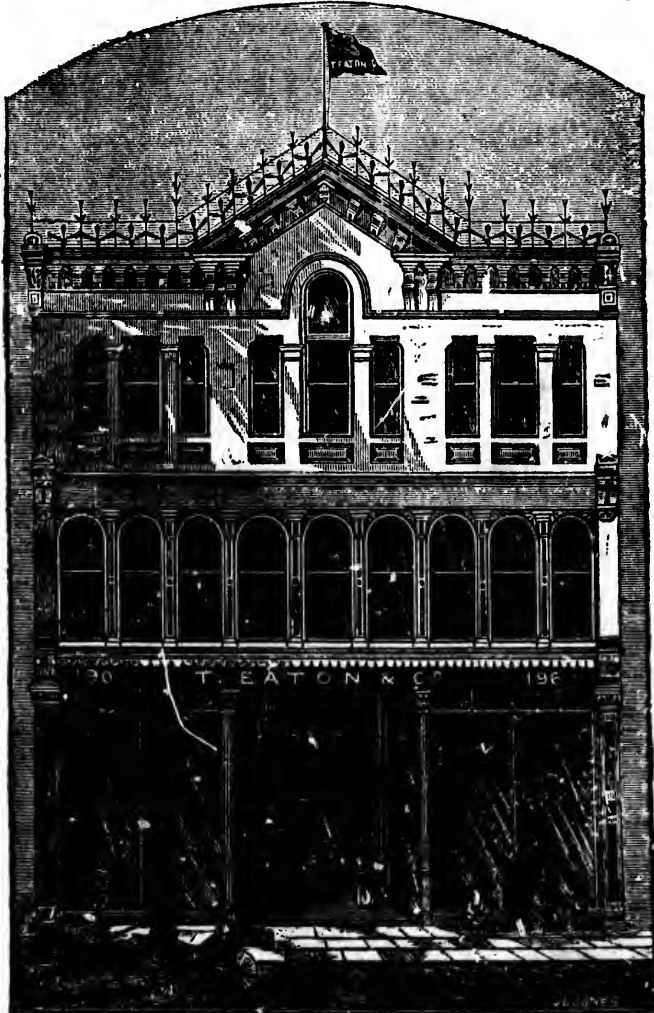


1884

- Fall and Winter Catalogue -

T. EATON & CO.

- IMPORTERS -



Nos. 190, 192, 194, 196 YONGE STREET, TORONTO, ONT.
(SEE BACK COVER)

MAIL JOB PRINT, TORONTO

T. EATON & CO.

TO OUR PATRONS :

WE take much pleasure in presenting our many customers with this, our first Catalogue. Owing to the immense increase in our Mail Order Department, we find it has become a necessity to issue a catalogue of this style, and even this is incomplete, in that it contains only a limited description of the stock, and therefore does not give you a correct idea as to the immense varieties and extensive stock carried by us, and in the thirty-five different departments there are thousands of articles and prices which are not mentioned herein; also, any order of goods wanted, which are not in Catalogue, will be executed to our best judgment. Another fact of interest to purchasers is that of our cash system, both buying and selling, which means no bad debts, runaway debtors, etc., or in other words, **cash prices, small profits and increasing trade.** Samples sent to any address in the Dominion. Any goods bought, and found not suitable, will be exchanged for other goods or money refunded. To visitors in the city, our immense establishment is full of interest, being of immense dimensions, abundance of light, no dark corners, four separate floors, all reached by two hydraulic elevators, together with electric lights, electric call bells, quick change system, rapid parcel office, and every necessity for a live colossal business, such as will be found at 190 to 196 Yonge Street.

Send for quotations or sample of any goods not in Catalogue. Address, Mail Order Department.

When arriving at the Union Depot or by the boats, take the Yonge Street cars, as they all pass our store.

T. EATON & CO.,

190, 192, 194, 196 YONGE STREET.

(SEE BACK COVER)

with
ease
y to
that
fore
and
rent
are
are
ther
buy-
etc.,
ing
ods
ods
ish-
nce
two
ells,
or a
nge
e.
the

Fa
Pl
Fa
He
He
He
Fa
Ex
Fa
Ex
Fa
Sp
Ex
Ex
Ti
Al
Ex
Bo
Ti
G
Ex
F
Pl
F
E
P
A

ve

ss

D

V

Keywords: child sexual abuse; disclosure; social support

24 inches in three Browns, three Greys, two Bronzes.....	7½
27 " " " " " ".....	10
30 " " " " " Black.....	12½
30 " " " " " ".....	15
Check Wincey for trimming.....	12½

BE(s)
658.871
E13.2
1884.

*Dress Department—Continued.***COLORED FRENCH CASHMER S**

In this class of goods we have spared no pains to get the best to be had, of pure French dye and finish, warranted to keep the color.

All-Wool French Cashmere, in 10 new shades.....	30	Per
" " " " 14 " " " " " " " " " " " "	38	cc
Extra Fine " " " 46 inches wide, 14 new shades..	45c., 50c., 60c., 75	"
Colored French Twill Cashmere, double fold.....	20c., 25c., 30	"
" " " " 42 inches.....	38c., 40	"
" " " " 46 " " " " " " " " " " " "	50	"

BLACK AND MOURNING GOODS DEPARTMENT—

Black Cashmeres. In this class of goods we need say nothing. Our brands are an old established thing, and we have secured the very best cashmere for the least money to be had.

All-Wool Cashmere, blue black, 36 inches	30	Per yard.
" " " " " " " " " " " " " " " " " "	35	cents.
All-Wool Cashmere, French make.....	38c., 45c., 50	"
Extra Fine Silk Finish Cashmere, 46 inches wide.....	60c., 75c., 90c., \$1.00	"
Extra Heavy Make Cashmere, for costumes or mantles.....	\$1.10, \$1.25, \$1.50	"
Black Union French Twill, double fold	20c., 25c., 30c., 35	"
Extra Fine Finish Union.....	45c., 50c., 60c., 75	"
Black Foulé Costume Cloth, 24 inches.....	15c., 20c., 25c., 35c., 40	"
Black French Serges, 24 in., warranted all-wool..	22½c., 25c., 30c., 35c., 40c., 50	"
Black Saungless, all-wool.....	30c., 35c., 40	"
Black Fancy Curl	30c., 40c., 50	"
Black Cape Imperial, heavy.....	27½c., 30c., 35c., 40	"
Black Cape Imperial, fine make, all-wool	40c., 50	"
Black French Serge, 50 inches wide.....	50c., 60c., 75c., 80	"
Black All-Wool Ottomans.....	25c., 30c., 35	"
Black French Ottoman, extra heavy	45c., 50c., 60	"
Black Wool Jersey Cloth, 50 inches wide	45c., 50	"
Black Fancy Curl, newest thing out.....	40c., 50c., 60	"

BLACK CRAPES—

Courtals's Pure Silk Crape, rain-proof.....45c., 50c., 60c., 75c., \$1.00, \$1.25,
\$1.50, \$2.00, \$2.25, \$2.75, \$3.00, \$3.25, \$3.75.
Black Veiling Crape, with woven border.

GREY DRESS GOODS and HALF MOURNING—

Plain Grey French Serge, Union.....20c., 25
All-Wool French Serge, three shades of Grey.....25c., 30
Extra Heavy French Serges.....35c., 45
Grey Stripes and Checks, for trimmings.
Black and White Stripes and Checks.
Full Variety of Half Mourning Goods.

In the Colored Dress Goods, where it is marked all new shades, it includes three shades of Brown, three shades of Garnet, two shades of Green, two shades of Blue, Olive, Moss, Mouse, Cuba, Tobacco, Peacock, Tan, Black, Fawn; in all, about twenty different shades.

SILK DEPARTMENT—

No department in the business requires as much attention as this department, and to no department in the house have we paid more attention than this. We find from experience

*Dress Department—Continued.***SILK DEPARTMENT—Continued.**

that ladies, in buying silk, besides using their own judgment, have got to depend a good deal on the seller; and in view of this fact, our stock is under a special department and special manager, and placed before the customer in such a way that there can be no misrepresentation, as every piece of goods is just as it appears and is represented.

	Per yard.
Black Gros Grain Silk, 22 inches wide	\$0 50
" " " for dresses.....	0 75
" " " extra value.....	0 90
" " " fine finish	1 00
" " " extra heavy.....	1 25
" " " for mantles or dresses.....	\$1.50, \$1.75, 2 00
Black Satins, 18 inches wide	0 40
" 20 " fine face.....	50c., 60c., 0 75
" 22 " for mantles.....	\$1.00, \$1.25, 1 50
Black Silk Marvilleaux, pure, 22 inches, very suitable for dresses	75c., 1 00
Black Satin Marvilleaux, mantle weight, will not cut or gloss	\$1.25, \$1.50, 1 75

These goods are extra superior in value.

Black Cashmere Oriental, very soft and durable, a most becoming goods for mantles and dresses	\$1.25, \$1.50, \$1.75, 2 00
--	------------------------------

BLACK SILK BROCADES—

All pure Silk, in 6 patterns.....	0 65
Black Silk Brocade, heavy weight, in 12 patterns.....	75c., 90c., 1 00
Black Silk Brocade, very heavy, for Mantles and Dolmans ..	\$1.25, \$1.50, \$1.75, 2 00
Black Silk Ottomans, suitable for all mantle purposes, 24 inch.....	90c., 1 00
Extra Heavy ditto.....	\$1.25, \$1.50, \$1.75, 2 00

COLORED SILKS—

Colored Gros Grain, 20 inches, in 15 new shades	0 50
This line is usually sold at 75c.	
Colored Gros Grain, 22 inches, in 15 new shades	0 65
" " " superior value	0 90
Extra special colored Gros Grains, new shades	\$1.00, 1 25
Colored Silk Marvilleaux, pure, 22 inches	90c., 0 90
" " " extra value, will not cut.....	\$1.00, 1 25

These goods are the newest dress silks.

COLORED SATINS—

Colored Satins, 18 inches, in 15 shades	0 25
" 20 " 30 "	50c., 0 60
Extra heavy Satins, for dresses, 22 inches	60c., 75c., 1 00

TRIMMING SILKS—

The newest things available have been procured.

Plain Stripes, suitable for dress or millinery purposes	0 60
Plain Stripes or Spots	0 75
Plain Stripes, Spots or Brocades	75c., 90c., \$1.00, \$1.25, \$1.50, 1 75

These goods will match all the new colors in dress goods.

VELVETS DEPARTMENT

Velvets are to be much worn this season, and are coming out in most beautiful shades. No dress material gives the same appearance or wear for the same price as a velvet.

VELVETEENS—

Every yard stamped and warranted fast pile.

Black, 23 inches wide, silk finish	35c., 40c.	50 cents
Black, 25 " " " " " " " " " " " " " " " "		65 "
Black, 25 inches, extra heavy		75 "
Black, 27 inches, extra heavy and superior finish	90c., \$1.00, \$1.25	

COLORED to be had in same qualities, widths and prices as the Black, and in the following colors: Seal, Mid Brown, Mouse, Cuba, Navy, Royal, Sky, Cardinal in two shades. Maroon, Plum, Fawn, Tobacco, Olive, Myrtle in two shades.

Every lady should see these goods, or send for samples.

BROCADE VELVETEENS—

Limited quantities, in colors and in black.....45c., 50c., 65c., 75c., 90 "

BLACK SILK VELVETS—

Pure Silk face, 18 inches	75c., 90 "
Pure Silk face, 18 inches, extra heavy	\$1.00, \$1.25, \$1.50
Mantle Velvet, 24 inches, superior goods	\$3.00, \$4.00, \$5.00, \$6.00

COLORED SILK VELVETS—

Pure silk face, in ten new colors, and of superior quality.....	\$1.00,	\$1.25,	\$1.50
Brocade Silk Velvets, new pattern	\$1.25,	\$1.50,	\$2.00
Black Brocade Silk Velvets, with frieze effect, very suitable for mourning, as well as All-Black goods.....	\$2.50,	\$3.00,	\$3.50, \$4.00

Frieze velvet is the very latest design, and has a wonderful effect in bringing out the pattern.

SAMPLES—

In sending for samples of these goods, please state what color wanted and range of price.
When this is done, we can arrive at your taste much easier.

MANTLE DEPARTMENT

NEWMARKETS—

- Ladies' Tweed Newmarkets, double box-plaits in black, with brocade plush set in top plaits, headed with ornaments; shoulder cape trimmed, with ornaments on shoulder; collar and cuffs of brocade plush; from \$8.00 to \$20.00.
- Ladies' Single-Breasted Newmarkets, novelty cloth, stitched edge, rolling collar, and sleeves stitched and trimmed, with buttons; from \$9.00 to \$22.00.
- Ladies' Jersey Cloth Newmarkets, with double box-plaits, trimmed with beaver fur, headed with handsome ornaments; from \$12.00 to \$25.00.
- Ladies' Silk Matchless Newmarkets, full back, headed with elegant ornaments, trimmed with Black Russian Hare, sleeves and collar to match; from \$16.00 to \$50.00

DOLMANS—

- Ladies' Tweed Dolmans, short back and long pointed front; Japanese sleeves, trimmed with Black Astrachan; from \$5.00 to \$25.00.
- Ladies' Dolmans, in elegant mourning brocade; Japanese sleeves, trimmed all around with Black and White Chenille Fringe; from \$12.00 to \$30.00.
- Ladies' Plush Dolmans, short back, drooping to front, trimmed with feather trimming all around; sleeves the same; French shoulders, with handsome ornaments; from \$25.00 to \$75.00.
- Ladies' Ottoman Cloth Dolmans, long front and back; Japanese sleeves, trimmed with Black Astrachan; from \$5.00 to \$25.00.
- Ladies' elegant long Brocade Silk Dolmans; narrow Japanese sleeves, satin linings, trimmed with Black Russian Hare; from \$15.00 to \$40.00.
- Ladies' handsome long Brocade Satin Dolmans, with long pointed flowing sleeves, trimmed with Black Cony Fur; collar and front trimmed with same; from \$20.00 to \$45.00.

CIRCULARS—

- Ladies' Cloth Russian Circulars, trimmed with Hercules Braid, edged with Black Cony, box-plaited in back, collar trimmed with same; tight-fitting sleeves, trimmed with braid; from \$10.00 to \$25.00.
- Ladies' Russian Circulars, of Sicilian Silk, elegantly braided on sides and box-plaited in back; trimmed with Black Russian Hare, fur-lined; from \$15.00 to \$35.00.

JACKETS—

- Ladies' Tweed English Walking Jackets, double box-plaits in back, narrow double-breast, broad stitch edge, sleeves to match, and rolling collar; from \$4.00 to \$15.00.
- Ladies' Single-Breasted Ottoman Cord Jackets, tight fitting; edge bound with braid; collar, pockets and sleeves trimmed with same; from \$6.00 to \$18.00.
- Ladies' Single-Breasted Jersey Walking Jackets, trimmed all around and up back to waist with Hercules Braid; neck and sleeves trimmed with same; from \$5.00 to \$20.00. Every lady should have one.

ULSTERS—

- Ladies' Single-Breasted Tweed Ulsters, stitched edge, rolling collar, and sleeves stitched and trimmed, with buttons; from \$3.00 to \$10.00.
- Ladies' Ottoman Cord Ulsters, close-fitting, trimmed with Black Astrachan around collar and down both sides of front; from \$9.00 to \$20.00.

*Mantle Department—Continued.***MISSSES' and CHILDREN'S NEWMARKETS—**

Misses' Single-Breasted Newmarkets, with cape, two box-plaits in back; cuffs and collar trimmed with natural Beaver; from \$6.00 to \$14.00.

Children's Heavy Cloth Newmarkets, with cape, trimmed with braid around neck to bottom, finished with handsome ornaments; collar and cuffs of plush; from \$3.00 to \$12.00.

CHILD'S GARMENTS—

Child's garments, tight-fitting back, with two single box-plaits set in front, double-breasted, half tight-fitting, with two rows steel buttons; from \$2.00 to \$10.00.

Child's Mother Hubbard, three box-plaits back and front, finished with collar and cape, and belt of same; belt fastened with two steel buckles; from \$3.00 to \$9.00.

MISSSES' and CHILDREN'S SUITS—

Misses' and Children's Colored Suits, skirts trimmed with two deep fine plaiting, extending to waist; polonaise trimmed with velvet, plaited from shoulder to waist, fastened with clasps, edged with a narrow piping; collar and cuffs of silk; from \$2.00 up.

LADIES' COSTUMES—

Ladies' Worsted Costumes, skirts two-thirds plaited, with broad silk panels on side, headed with short drapery in front, full drapery in back; basque, with square of fine plaiting to bust, extending to bottom of basque; collar and cuffs of silk; from \$5.00 to \$15.00.

Ladies' Elegant Silk and Satin Skirts made with full plaited sides, trimmed with narrow box-plaits in back. These, worn with a Jersey, make one of the handsomest suits a lady can wear; \$5.00 to \$15.00.

Also a large assortment of Ladies' Handsome Overskirts in Black Cashmere and colored novelty goods; from \$4.00 up.

CLOTH DEPARTMENT

Black Ottoman Cord, 54 inches wide, from \$1.25 to \$6.00.

Jersey Cloth, in Brown, Blue and Black, 54 inches wide, \$2.00, \$2.50 \$3.00, \$4.00.

Leading shades in Meltons, 54 inches wide, at 60c., 75c. and \$1.00.

Colored Ulster Cloth, 54 inches wide, from \$1.00 up.

Tweed Ulster Cloth, 54 inches wide, from 60c. up.

Victoria Twill, All-Wool, in all colors, 54 inches wide, 75c. and \$1.00.

Chinchilla Beaver, 54 inches wide, \$1.50 to \$3.50.

Matelasse Cloth, 54 inches wide, \$1.25 up.

Fancy Brocade, 54 inches wide, from \$1.10 up.

Sealette, in Silk, Mohair and Worsted, 54 inches wide, from \$4.00 to \$20.00.

Silk Plush, 24 inches wide, from \$5.00 up.

All the newest things in Black and Colored Astrachan Pushes, etc., for trimming purposes, from \$1.00 up.

GLOVE DEPARTMENT

The new Fall Glove, manufactured expressly for our trade, made of spun silk, Jersey shape, 6 button length, with fleecy wool inside; the most convenient and comfortable glove manufactured.

To be had in all new shades at..... Per pair.
\$0 50

CASHMERE—

Ladies' Cashmere, Jersey make, 4 button length, in 10 new shades..	20c., 25c.,	0 30
" " " finer quality, same colors.....	35c.,	0 40
" " " woven seams, ribbed wrist, all new shades, 4 button length.....	25c.,	0 35
Same glove in 6 button length.....	35c.,	0 50
Children's Jersey Cashmere, from No. 1 to 6, in all new shades, from 15c. up.		
" " " woven seams.....		0 25
" " " No. 1 fits a child 3 years old.		
" " " No. 6 fits a girl 14 years old.		

RINGWOOD—

Ladies' Ringwood Gloves, fancy colors.....		0 35
" " " fine make.....		0 40
Misses' Ringwood Gloves, from No. 1 to 6.....		0 30
Gents' " " ".....		0 20
" " " Cashmere Gloves, woven seams.....		0 35
" " " Cloth Gloves, lined.....		0 40
" " " Knitted Woollen Gloves.....	20c., 25c., 35c.,	0 50

KID GLOVES—

Ladies' Undressed Kid Gloves, 4 buttoned, in Tans, Greys, Browns.....		0 50
" Undressed Mousquetaire Gloves, 6 button length, in Tans only....		0 75
" Ladies' Castor, or Driving Gloves, 6 buttons.....		0 75
" Mousquetaire shaped Gloves, 6 buttons.....		1 00
" French Kid Gloves, 4 buttons, in all shades and Black.....		0 50
Eaton's Special quality, 3 buttons, in all shades.....		0 50
Ladies' 6 button French Kid, in all shades.....		0 75
Eaton's Special quality 4 button glove.....		0 75
Ladies' Mousquetaire French Kid, in all shades.....		0 75
" 4 clasp fastener French Kid Glove, all shades.....		0 75
" 4 buttons, embroidered backs, all shades.....		0 75
" "Alexandra" Kid Glove, Eaton's Special, noted for perfect fit, warranted not to split, 4 buttons, in all shades.....		1 00
Ladies' French Kid, 6 buttons, in all shades.....		1 00
" Mousquetaire Kid, 6 button length.....		1 00
Dents' 4 Clasp Fastener Kid Gloves, special.....		1 10
Eaton's Special "Alexandra," 6 buttons.....		1 25
Ladies' Mousquetaire, 6 button length, in all shades.....		1 25
Jösephine Gloves, double stitch sewing, every pair warranted, 3 buttons.....		1 25
"Jouvin" Kid, 4 buttons, double stitch.....		1 35
" " " 6 buttons, warranted.....		1 50
" " " Mousquetaire, all shades.....		1 50
Eaton's Special "Alexandra," 8 button length, Mousquetaire, warranted....		1 50
"Conversier" Kid, 4 buttons, every pair warranted.....		1 50
Eaton's Special Alexandra Kid, 10 button length, Mousquetaire, in Operas, White and Tans only.....		1 75
"Jouvin," 10 button length, Mousquetaire, in Black, Tans and Operas only....		2 00
Misses' French Kid Gloves, 3 buttons, embroidered backs, all colors.....		0 60
" "Jouvin" Kid Gloves, 3 buttons.....		0 75
" " French Kid, in Operas and White.....		0 50
Where it is marked, "In all shades," it includes the following: Black, White, Cream, Pink, Tan, Brown, Golden Brown, Bronze, Moss, Grenat, Navy, Myrtle, Grey, Mode Shades and Cuba.		

*Glove Department—Continued.***GENTS' KID GLOVES—**

	Per pair
Eaton's Special, 2 clasp fastener glove, embroidered backs, colored.....	\$ 0 75
Gents' 1 button Kid, in all colors and Black	0 50
" 2 button Kid, fine quality	1 00
Eaton's Extra Fine, 2 clasp fastener.....	1 00
Gents' Extra quality, 2 clasps, colors and Black.....	1 25
Gents' Best Pique Kid, embroidered backs, warranted to wear, in colors and Black	1 75
Gents' Castor Glove, 2 button, for driving	1 00
" Antelope, Eaton's Special, 2 clasps.....	1 25

GENTS' LINED KIDS—

Flannel-lined Gloves	0 75
" 2 clasps, embroidered backs	1 00
Fur top gloves, flannel-lined	1 00
" " " spring fastener	1 25
Eaton's Special, flannel lined, otter cuff, spring fastener.....	1 50
Gents' Kid Mitts, fur top, lined	0 75
" " " spring fastener.....	1 00
" " " otter cuffs, extra fine	1 25
" Buck Glove, flannel-lined.....	\$1.25, \$1.50, 1 75
" Chamoie Gloves and Mitts, flannel-lined.....	1 00
" Buck Mitts, lined	1 25

LADIES' LINED KIDS—

Ladies' flannel-lined Kids, 2 clasps	0 75
" fur top, flannel-lined	1 00
" " lined, spring fastener.....	1 25
" " extra long wrist	1 50
" Kid Mitts, lined (Special)	0 50
" Fur Top Mitts, lined	0 75
Children's Kid Mitts, lined.....	35c., 40c., 0 50
" Gloves, Fur Top, flannel-lined, spring fastener	0 75

BOOT and SHOE DEPARTMENT.

	Per pair.
Ladies' Pebble, Button and Lace Boots.....	90c., \$1.00, \$1 20
" Kid, Button, worked button-holes.....	\$1.50, 1 75
" Fine Oiled Pebble, Laced Boots.....	1 50
" Oiled Goat, Button Boots.....	\$1.75, 2 00
" Calf and Kid, Button Boots.....	\$2.00, 2 25
" Extra Quality Calf and Kid, Button.....	\$2.40, \$2.65, 2 75
" Oiled Goat, Laced.....	\$2.00, 2 25
" Calf and Kid, "	2 40
" Fine French Kid, Button.....	\$2.00, 2 75
" Extra Qualities, "	\$3.00, \$3.50, 5 00
" American Button Boots, finest qualities, at very low prices.....	
Misses' Pebble, Button and Lace Boots.....	1 00
" Kid, Button, worked button-holes	1 25
" Fine Oiled Goat, "	1 50
" Calf and Kid.....	\$1.50, \$2.00, 2 25
" Some fine lines in French Kid.....	
Children's Boots in great variety, at all prices.....	

*Boot and Shoe Department—Continued.***SLIPPERS—**

- Ladies' House Shoes, from 50c. up.
 " Kid, Turns' Rosette, 75c. up.
 " Fine Kid Slippers, 95c., \$1.00, \$1.20
 " American Slippers, \$1.50, \$1.75, \$2.00.
 " French Kid Strap Shoe, with bows, \$2.00, \$2.25 up.
 " Very Fine Kid Shoes, beaded toes, \$2.00 to \$3.00.
 Misses' Slippers, 50c., 75c., 85c., \$1.00, \$1.25 up.
 Children's Slippers, 35c., 50c., 75c., 90c., \$1.00 up.
 Special Line of Youths' Laced, \$1.15, worth \$1.50.
 Extra Quality, " " hand-sewed, \$1.50.

TRUNKS, VALISES AND SATCHELS DEPARTMENT.

For the convenience of people from a distance, we keep a consignment of Trunks and Valises in every size, which we will sell at manufacturers' prices, less 10 per cent. Prices as under. Goods can be packed and sent to any depot.

Full range of Packing Trunks, in Wood and Tin, from 35c. to \$1.50.
 Travelling Trunks in great variety, Wood, Leather and Crystallized, in all prices and sizes.
 An immense assortment of Travelling Satchels and Valises, from 50c. to \$5.00.
 Rug, Shawl and Bag Straps of all kinds.
 A Special Line of Solid Leather Trunks, 28 in. to 36 in., from \$2.75 to \$3.75.

RUBBER CIRCULARS—

- Special Line of Ladies' Rubber Circulars, in all sizes, at 75c.
 Ladies' Alaska Circular, sizes from 50 to 60 inches long..... \$1 00
 " "Excelsior" Circular, fine quality..... 1 35
 " Silver-Finished Circular..... 1 50
 " Circular, Checked Lining..... 1 75
 " " Extra Quality, Silver Finish..... 2 00
 " " Plaid Lined, Silver Finish..... 2 50
 " "Newport" Circular, with Cape and Sleeve..... 2 00
 " "Best of All," newest shade..... 2 00
 " "Star" Circular, very fine..... 2 50
 The same Circular, finest quality, Silver Grey..... 4 00
 Misses' Alaska Circular, from 36 in. to 48 in..... 1 00
 " "Excelsior" Circular..... 1 25
 Boys' Rubber Coats..... 1 50
 Fine assortment of Gentlemen's Rubber Coats, \$1.75, \$2.50 up.

In sending for any of the above, send measure of chest and length from neck to the length required.

Ladies' Merino and Woollen Underwear Department

LADIES' SCARLET UNDERWEAR—

Scarlet Vests, all pure wool, nicely finished; sizes, 28, 30, 32, 34, 36 inches, each.. \$1 00
 Ladies' Clerical Merino Vests, all sizes, in three qualities, each.....65c., 75c., 1 00
 Ladies' Scotch Lamb's-Wool Vests, three sizes, S.W. women's, O.S. women's, each 1 00
 Extra finish Shetland Lamb's-Wool Vests, three sizes, each.....\$1.50, \$1.65, 1 75

LADIES' COMBINATION SUITS—

In Shetland Wool, full finished, in three sizes, S.W. women's, O.S. women's, prices.....\$1.75, \$2.00, \$2 25

Ladies' White Merino Vests, medium or fall weight, all sizes, each..... 0 50

" " " " winter weight, each..... 0 65

Drawers to match, per pair..... 0 50

Ladies' White Merino Vests, medium weight, short sleeves, all sizes, each..... 0 50

Ladies' Balbriggan Vests, with short or long sleeves; sizes, 26, 28, 30, 32, 34, 36 inches, each..... 0 60

Ladies' winter weight Balbriggan Vests, with long sleeves; sizes, 26, 28, 30, 32, 34, 36 inches, each..... 0 75

Ladies' White Cashmere Vests, with long sleeves, in three sizes, S.W. women's, O.S. women's, each.....\$2.50, \$3.00 3 50

Misses' and Children's Wool and Merino Underwear—Children's Merino

Vests, winter weight:

Size:	16	18	20	22	24	26
Price:	25c.	30c.	35c.	40c.	45c.	50c. each.

Drawers to match.

Children's Grey Merino Vests:

Size:	16	18	20	22	24	26
Price:	30c.	30c.	35c.	35c.	40c.	45c. each.

Drawers to match.

Children's Lamb's-Wool Underwear:

Size:	1	2	3	4	5	6
Price:	40c.	45c.	50c.	50c.	55c.	60c. each.

Drawers to match.

Children's Heavy Ribbed Lamb's-Wool Underwear:

Size:	1	2	3	4	5	6
Price:	38c.	40c.	40c.	45c.	50c.	50c.

Drawers to match.

Children's Combination Suits in Merino and Lamb's-Wool.

Fine Finished Merino Combination Suits:

Size:	3	4	5	6
Price:	75c.	85c.	\$1.00	\$1.25

Fine Lamb's-Wool Combination Suits:

Size:	00	0	1	2	3	4	5	6
Price:	\$1.00	\$1.10	\$1.15	\$1.20	\$1.25	\$1.35	\$1.50	\$1.65

LADIES' NIGHT DRESSES—

Well made and finished, nicely trimmed with frilling and tucked, each..... 0 50

Ladies' Night Dress, trimmed with cluster tucks, frilling and insertion, each..... 0 58

Fine Night Dresses, beautifully made and trimmed..... 2 00

.....each 75c., 85c., \$1.00, \$1.25, \$1.50, \$1.75, 1 65

Lonsdale Cambric Night Dresses, trimmed with Swiss Muslin embroidery, each..... 1 75

The "Mother Hubbard" Night Dress is entirely new, tucked cambric yoke and embroidery, each..... 1 75

*Ladies' Underwear Department—Continued.***LADIES' NIGHT DRESSES—Continued.**

"Mother Hubbard" Night Dress, with yoke of all-over embroidery and nicely trimmed, each.....	2 75
Ladies' Handsome Sack Night Dress, tucked, and frilled with embroidery whole length of front, each	3 50

LADIES' CHEMISES—

In white cotton, trimmed with frilling, each.....	0 25
Ladies' Nice Chemise, trimmed with frilling and embroidery, each.....	0 35
Ladies' Chemises to match different styles of Night Dresses.....	
..... each 35c., 45c., 55c., 75c., 85c., \$1.00, \$1.25, \$1.50,	2 00

LADIES' DRAWERS—

Special make of white cotton, nicely trimmed, with edging.....	Per pair. \$0 33
All styles in Drawers to match Chemises and Night Dresses., 33c., 35c., 38c., 45c., 50c., 65c., 75c., 85c., \$1.00, \$1.25, 1.50	
Ladies' Corset Covers, Sizes: 30, 32, 34, 36, 38, 40, 42 inch, bust measure.	
Prices: 25c., 30c., 38c., 50c., 65c., 75c., 85c., \$1.00, \$1.25, each.	
Lonsdale Cambric Corset Covers to match sets.	

LADIES' SUNDRIES—

Chemises, Skirt Chemises, Corset Cover Chemises, Extra Sized Chemises, Low Neck Corset Covers, High Neck Corset Covers, Drawers, Extra Sized Drawers, Under-skirts, Night-gowns, Bridal Sets, Pillow Shams and Sheets, Dressing Sacques.

INFANTS', CHILDREN'S AND MISSES' SUNDRIES—

Long Dresses, Long Skirts, Long Flannel Skirts, Flannel Shawls, Linen Shirts, Robes, Short Dresses, Short Skirts, Merino Cloaks.
 Misses' Chemises, Drawers and Night-gowns, all sizes.
 " Underwear, to fit children from 2 to 15 years of age.
 Children's Short Dresses, 18, 20 and 22 inches in length.
 Misses' White Dresses, 24, 26 and 28 inches in length.
 Coats and Capes, 20 and 22 inches in length.

MILLINERY DEPARTMENT OPEN NOW

Ladies' Jersey Department

The Jersey Waists have become very popular, and—the leading fashion reports say—a garment that has come to remain in style.

Ladies' All-Wool Plain Black Jerseys, 5 sizes, 22, 34, 36, 38, 40 inch, bust measure, each	\$1 25
Ladies' Heavy Black Braided Jerseys, all the sizes, each	1 50
Handsome line Ladies' Black Cashmere Jerseys, with coat back; sizes, 34, 36, 38, 40 inch, bust measure, each	2 00
Ladies' pretty Black Cashmere Jersey, with braided front and scalloped bottom; sizes, 32, 34, 36, 38, 40 inch, bust measure, each	3 00
Ladies' Fine Black Cashmere Jerseys, with fitted front and coat back; all the sizes, each	\$3.00, \$3.75, 4 25
Ladies' Extra Heavy Black Cashmere Jersey, richly braided and coat back; all sizes, each	\$4.50, 4 75

COLORED JERSEYS—

Ladies' Braided Jersey, in Navy, Seal and Grenat; full range of sizes, each	2 00
Ladies' Colored Cashmere Jerseys, with shaped front and coat back, in Tan, Seal, Navy, Grenat, Cardinal and Creme, each	2 65
Ladies' Handsome Colored Jersey, coat back and heavy braid; sizes, 32, 34, 36, 38, 40 inch, bust measure, in Tan, Seal, Navy, Grenat, Cardinal and Brown, each	3 00
Ladies' Fine Cashmere Jersey, nicely braided, with scallop bottom, in any of the above shades, each	3 00
Misses' Jerseys, in Navy, Sky, Cardinal and Black; 3 sizes, each	\$1.50, \$1.65 1 75
Children's Jersey Dresses, in Cardinal, Navy, Seal Brown and Grenat shades, with plaited and frilled skirts, each	\$3.00 3 50
Children's handsome Jersey Dresses, with polka dot trimming, each	\$3.50 3 75
Boys' Jersey Suits, in Navy Blue, with colored shirt fronts, trimmed with black or white military braid; sizes, 1, 2, 3, 4, per suit	\$1.65, \$1.75, \$2.00 2 25
Boys' Ribbed Jersey Suits, trimmed with military braid in Navy Blue, all sizes, per suit	\$1.25 2 00

Millinery Department

This department is under the management of one of the most expert managers from New York; and as it is a department that requires taste, aptness and judgment to discern what is suitable without hesitation, we can confidently say that the department is now in excellent shape for procuring the latest American and Parisian novelties.

Ribbon Department

All-Silk Ribbons, in all the leading shades and widths, $\frac{1}{4}$, $\frac{1}{2}$, 1, $1\frac{1}{2}$, 2, $2\frac{1}{2}$ in.	Per yard.
Price.....	3c., 4c., 6c., 9c., 12c., 15 cents.
New Ottoman Cord Ribbon, in 30 different shades, widths, $\frac{1}{2}$, 1, $1\frac{1}{2}$, 2, $2\frac{1}{2}$, 3 in.	Price.....
	6c., 8c., 10c., $12\frac{1}{2}$ c., 15c., 20 "
Satin Ribbons, in colors and Black, 3c. per yard up.	
Gros Grain Ribbons, colors and Blacks.	
Satin and Gros Grain Ribbons, colors and Blacks.	
Trimming Velvet Ribbons, colors and Blacks.	
Velvet and Satin Ribbons, colors and Blacks.	

Handkerchief Department

Ladies' White Japanese Silk Handkerchiefs, hem-stitched.....	Each.	\$0 60
" White Brocade and Spotted Silk Handkerchiefs.....	50c., 75c., \$1.00,	1 25
" Colored Silk Handkerchiefs, Brocade, Spotted and Striped,	38c., 50c., 75c., \$1.00,	1 25
Gents' White Japanese Silk Handkerchiefs.....		0 90
" White Brocade and Fancy Pattern Silk Handkerchiefs,	75c., \$1.00, \$1.25, \$1.50,	1 75
" Colored Silk Handkerchiefs.....	60c. to	2 50
Boys' Fancy Silk Handkerchiefs, in Stripes, Spots and Checks.....	25c. to	0 50
Gents' White Linen Hem-stitched Handkerchiefs, $\frac{3}{4}$ size.....	25c., 35c.,	0 50
" $\frac{7}{8}$ Size Linen Handkerchiefs.....	15c., 18c., 20c., 25c., 30c.,	0 35
" $\frac{3}{4}$ Size Linen Handkerchiefs.....	$12\frac{1}{2}$ c., 15c., 18c.,	0 20
" $\frac{3}{4}$ White Linen Handkerchiefs, Colored Borders.....	75c., \$1.90,	\$1 25
Ladies' White Linen Hem-stitched Handkerchiefs, $\frac{1}{2}$, $1\frac{1}{2}$, 2 in. hem,	\$1.00, \$1.50, \$2.00, \$2.25, \$2.50, \$3.00, \$3.50,	3 75
" White Linen $\frac{4}{8}$ Size Handkerchiefs.....	75c., \$1.00, \$1.25, \$1.50, \$1.75,	2 00
" White Linen, $\frac{1}{2}$ Size, Handkerchiefs.....	75c. to	3 00
" White Linen Handkerchiefs, Scolloped Border, worked in white, 20c., 25c.,	30c., 35c., 40c. and 50c. each.	
" Linen, Colored Border, Handkerchiefs, $\frac{1}{2}$, 1 and $1\frac{1}{2}$ in. hem.....		1 00
" Solid Mourning Border, Hem-stitched Handkerchiefs, hem all black,	$\frac{1}{2}$, 1 and $1\frac{1}{2}$ in., price.....	\$1.50, \$2.00, \$2.50, \$2.75, \$3.00,
" Fancy Colored Border Handkerchiefs.....	35c., 50c., 60c.,	0 75
Boys' Colored Border Handkerchiefs.....		0 75
" White Damask Handkerchiefs.....		0 60
" Turkey Red Handkerchiefs.....	60c., 75c.,	0 85

Hosiery Department

FANCY COTTON—

	Per pair.
Ladies' Cotton Hose, in wide fancy stripes with dark colored grounds.....	\$o 10
Fancy Striped Cotton Hose, in Balbriggan, with small and wide stripes in colors to contrast.....	25c., 38c., o 50
Black and Grey Mixed Cotton Hose, Oxford and Cambridge mixtures.....	o 10

PLAIN COTTON—

Ladies' Colored Cotton Hose, full fashioned, regular made, all sizes, in Navy, Seal, Grenat and Cream colors.....	o 25
Ladies' Extra Fine Balbriggan Cotton Hose; sizes, 8, 8½, 9, 9½ inches, finished with French Toe, and made specially to our order, which has been a leading line this season.....	o 25
Ladies' Plain Lisle Thread Hose, all the new colors.....	o 50
Ladies' Brilliant Lisle Hose, in the most fashionable colors.....	o 50
Ladies' Colored Cotton Hose, with silk clock, in Navy, Seal and Grenat.....	o 35
Ladies' Black Cotton Hose; sizes, 8, 8½, 9, 9½ inches, with French Toe, regular made.....	25c., 30c., o 38
Ladies' Extra Heavy Black Brilliant Lisle Hose, selling at 50c., regular value, 75c.	
Our full line of Ladies' Rockspun Silk Hose, in all the fashionable colors and Black, selling at 90c. per pair, worth \$1.50.	

LADIES' CASHMERE AND WOOL HOSIERY—

A big line of Ladies' Canadian made Cashmere Wool Hose, in Navy, Seal, Grenat and Black; sizes, 8, 8½, 9, 9½ inches, seamless and extra length, selling at 38c. per pair, worth 58c.	
Ladies' English made Cashmere Hose, in Black, Navy Blue, Seal Brown and Wine colors.....	o 28
English make of Cashmere Hose, with French Toe, in colors and Black.....	o 38
Ladies' German made Cashmere Hose, extra length, full fashioned, popular colors and Black.....	o 50
Ladies' extra made Cashmere Hose, with spliced heel and French finish, in the popular shades.....	o 65
Fine German made Cashmere Hose; sizes, 8½, 9, 9½ inches, extra length, in Navy, Seal, Wine and Black.....	o 70

LADIES' RIBBED CASHMERE HOSE—

A full fashioned, extra length and very elas c. Colors: Navy, Seal, Wine and Black.

Sizes:	8 in.	8½ in.	9 in.	9½ in.
Prices:	75c.	80c.	80c.	85c. per pair.

LADIES' WOOL HOSE—

	Per pair.
Ladies' Heavy Machine Knit Grey Lamb's-Wool Hose.....	o 25
Ladies' Shaped Lamb's-Wool Hose, made of fine Australian Wool, in Navy, Seal, Grenat, Wine and Black, Sizes: 8, 8½, 9, 9½ inch.....	o 50
Ladies' Hose for evening wear, in Cotton, Silk and Cashmere; Colors: Pink, Sky, Cardinal, Cream and White, from 25c. to \$1.50 per pair.	

*Hosiery Department—Continued.***CHILDREN'S HOSIER.—**

Misses' Cotton Hose in Grey mixtures, 5c. per pair.

" Striped Cotton Hose in dark grounds, 8c. per pair.

Children's German made Cotton Hose, extra length, in Navy, Seal, Grenat and Black, also Sky and Pink.

Sizes: $4\frac{1}{2}$ in. 5 in. $5\frac{1}{2}$ in. 6 in. $6\frac{1}{2}$ in. 7 in. $7\frac{1}{2}$ in. 8 in. $8\frac{1}{2}$ in.

Prices: 12c. 13c. 15c. 15c. 18c. 18c. 20c. 20c. 23c. per pair.

Children's Cotton Hose with Silk Clocks, full fashioned, white toe and heel, all the leading colors. Sizes: $4\frac{1}{2}$ in. to $8\frac{1}{2}$ in. Prices: 18 to 38c. per pair.

FRENCH BALBRIGGAN.—

Children's extra length, full fashioned.

Sizes: $4\frac{1}{2}$ in. 5 in. $5\frac{1}{2}$ in. 6 in. $6\frac{1}{2}$ in. 7 in. $7\frac{1}{2}$ in. 8 in. $8\frac{1}{2}$ in.

Prices: 15c. 18c. 20c. 20c. 23c. 23c. 25c. 25c. 30c. per pair.

Children's Lisle Thread Hose, in Navy, Seal, Grenat and Black.

Sizes: $4\frac{1}{2}$ in. 5 in. $5\frac{1}{2}$ in. 6 in. $6\frac{1}{2}$ in. 7 in. $7\frac{1}{2}$ in. 8 in.

Prices: 33c. 35c. 38c. 40c. 43c. 45c. 50c. 55c. per pair.

CHILDREN'S CASHMERE HOSE.—

English made Cashmere Hose; Colors: Black, Navy, Seal and Grenat.

Sizes: $4\frac{1}{2}$ in. 5 in. 6 in. $7\frac{1}{2}$ in. 8 in. $8\frac{1}{2}$ in.

Prices: 20c. 20c. 23c. 23c. 25c. 25c. per pair.

Misses' German made Cashmere Hose, extra length and full fashioned, all the popular shades.

Sizes: 5 in. $5\frac{1}{2}$ in. 6 in. $6\frac{1}{2}$ in. 7 in. $7\frac{1}{2}$ in. 8 in.

Prices: 25c. 25c. 25c. 30c. 30c. 35c. 40c. per pair.

Boys' Heavy Ribbed Knickerbocker Hose in Cashmere, double heels and finished toe, Navy Blue, Seal Brown and Black:

Sizes: 7 in. $7\frac{1}{2}$ in. 8 in. $8\frac{1}{2}$ in. 9 in.

Prices: 50c. 55c. 60c. 65c. 70c. per pair.

The Extra quality in German Cashmere Hose, full fashioned, in the newest shades:

Sizes: $4\frac{1}{2}$ in. 5 in. $5\frac{1}{2}$ in. 6 in. $6\frac{1}{2}$ in. 7 in. $7\frac{1}{2}$ in. 8 in. $8\frac{1}{2}$ in.

Prices: 40c. 40c. 45c. 45c. 50c. 50c. 55c. 60c. 65c.

Misses' Ribbed Cashmere Hose, full fashioned, extra length, in colors and Black, very elastic:

Sizes: $5\frac{1}{2}$ in. 6 in. $6\frac{1}{2}$ in. 7 in. $7\frac{1}{2}$ in. 8 in. $8\frac{1}{2}$ in.

Prices: 35c. 40c. 45c. 55c. 60c. 70c. 75c. per pair.

Children's Canadian Made Cashmere Wool Hose, in Navy, Seal, Grenat and Black, in seamless and extra length:

Sizes: $4\frac{1}{2}$ in. 5 in. $5\frac{1}{2}$ in. $6\frac{1}{2}$ in. 6 in. $6\frac{1}{2}$ in. 7 in. $7\frac{1}{2}$ in. 8 in. $8\frac{1}{2}$ in.

Prices: 18c. 20c. 22c. 25c. 28c. 30c. 30c. 35c. 38c. per pair.

Extra Heavy Lamb's-Wool Hose for Children, Ribbed, in Light and Dark Grey, extra length:

Sizes: 7 in., $7\frac{1}{2}$ in., 8 in., $8\frac{1}{2}$ in., 9 in., at 25c. per pair.

Ribbed, in Self Colors and Black, a splendid stocking for Boys' wear:

Sizes: 7 in., $7\frac{1}{2}$ in., 8 in., $8\frac{1}{2}$ in., 9 in., at 35c. per pair.

Frilling and Ruching Department

	Per yard.
Single Row Neck Frilling, in White and Creme.....	2 cents.
Double Row Neck Ruching, in Creme and White.....	5 "
Crape Lisse Neck Ruching, in Creme and White.....	8 "
Crape Lisse Neck Ruching, double edge, in Creme and White.....	10 "
Fine Crape Lisse Frillings, in Creme and White.....	12½c., 15c., 18 "
Fine Crape Lisse Ruching, three double.....	20c., 25 "
Two Row White Lisse Frilling, with a Heavy Gilt Edge.....	30 "
A pretty White Lisse Frilling Shell Pattern, with Gilt Edge and Tucks.....	30 "
White and Creme Lisse Quadruple Box Plait Frilling, with Lace Edge.....	40 "
Two Row White Lisse Frilling, with heavy Silver Edge.....	60 "
Three Row Creme Lisse Frilling, with Colored Edge.....	30 "
Four Plait Silk Gauze Frilling, in Coffee, Creme, White and Beige Colors.....	50 "

BLACK RUCHINGS—

Single Row Crepe Lisse.....	8 "
Double Row Crepe Lisse.....	10 "
Three Row Crepe Lisse.....	20 "
Black and White Lisse Ruching.....	25 "
White Lisse Ruching, with Black Edge.....	20c., 25c., 30 "

Ladies' Linen Collar Department

- Ladies' Plain Band Collar, in fancy colors or White; sizes, 12, 12½, 13, 13½ inches, 4c. each, or 7 for 25c.
- Ladies' Plain White Band One-Stud Collar, in all the sizes, made specially for our trade, price, 5c. each, or 6 for 25c.
- Ladies' Fancy Colored Band Collar, with one stud, all sizes, 5c. each.
- A pretty Three-Ply White Linen Collar, with one stud; sizes, 12, 12½, 13, 13½, 14, 14½, 15 inches, price, 7c. each, or 80c. per dozen.
- The growing demand for Ladies' Collars has become so great that we have found it necessary to make a separate department exclusively for the Collar trade.
- The Cape Collars have become the most popular for their neatness; once they are adjusted to the neck no pins or hooks are required to keep them in their place.
- Ladies' Three-Ply White Linen Cape Collar, with stud, made from the latest American shape; sizes, 12, 12½, 13, 13½, 14, 14½, 15 inches, price, 10c. each.
- A High Cape Collar, in Four-Ply White Linen, two studs, all sizes, price, 20c. each.
- Ladies' Fancy Striped Cape Collars, in Cardinal and White, Sky and White, Pink and White, Black and White and Blue and Cardinal, price, 10c. each.
- Ladies' Polka Dot Collar, in the popular colors, with cape, all sizes, 10c. each.
- Ladies' Cape Collar, in Navy Blue with Cardinal lining, all the sizes, 15c. each.

MOURNING COLLARS—

- Black and White Band Collar, with stud, all sizes, 8c. each.
- Black Band Collar, with white corded edge, two studs, all sizes, 17c. each.
- Black and White Striped Cape Collar, lined with Black, all sizes, 15c. each.
- All Black Cape Collars, with turn-over corners, any size, 15c. each.
- Mourning Cuffs, to match Collars, in the new Jersey shape, 17c., 20c., 25c. per pair.
- White Linen Cuffs, Jersey shape, 2½ inches wide, 15c. per pair.
- The Jersey Cuff, with thin centre, 20c. per pair.
- Jersey Cuffs, in all colors, to match Collars, 15c. and 20c. per pair.

Ladies' Collar Department—Continued.

A pretty round-shaped Sailor Collar for boys, in fancy colored spots, 5c. each.
 Boys' Sailor Collars, with white ground and colored horses' heads and whips, bugles, dogs' heads, and other pretty designs, 10c. each, or three for 25c.
 Boys' Sailor Collars in stripes, 10c. each.
 Boys' White Sailor Collars; sizes, 12, 12½, 13, 13½ inches; prices, 10c., 12½c., 15c. each.

LACE COLLARS—

Children's American Lace Collars, warranted to wash, 7c., 9c., 10c., 12½c. each.
 Children's large-sized Lace Collars, with embroidery, and all-over net, 12½c., 15c., 17c., 20c., 25c. each.
 Children's Oriental Lace Collars, in White Creme and Beige, 25c., 30c., 38c. each.
 Children's Guipure Lace Collars, new designs, 25c. each.
 Ladies' Lace Collars, in Oriental, 25c., 35c., 50c. each.
 Guipure Hamburg Collars, 75c., \$1.00 each.
 Irish Point Collars, \$1.00, \$1.25, \$1.50 each.

LADIES' LACE FICHUS—

The Pompadour Lace Fichu, \$1.25 and \$1.50 each.
 Oriental Lace Fichus in Creme and White, 75c., \$1.00, \$1.25, \$1.50, \$2.00 each.
 Imitation Duchesse Lace Fichus, 75c., \$1.00, \$1.25 each.
 Black Spanish Lace Fichus, \$1.00, \$1.25, \$1.50 each.
 Black Spanish Scarfs, 1½ yards long, 4 inches wide, 75c., 90c., \$1.00, \$1.25 each.
 Black and Creme Spanish Scarfs, 1½ yards long, 50c. each.

Lace Department

This season we import large quantities of Wool Laces, to match the coming styles in Dress Materials.

The Wool Barege Lace is a heavy pattern, and trims richly.

Many styles in Wool Laces for this season's trade are equal in pattern to the real Duchesse Lace. Widths: 2 in. to 9 in.; prices: 12½c., 17c., 20c., 25c., 35c., 50c. per yard.

New Black Matelasse, Spanish, Chantilly and Guipure Laces for Dress and Mantle Trimmings.

New Black Flouncing Laces in Soutache, Spanish, Chantilly and Matelasse. Widths: 6, 9, 12, 18 to 36 in.; prices: 35c. to \$2.00 per yard.

REAL WHITE LACES—

Valenciennes—½ in. wide, 17c. to 25c. per yard; ¾ in. wide, 25c. to 37½c. per yard; 1 in., 37½c. to 50c. per yard.

Thread Laces—½ in., 25c.; ¾ in., 30c.; 1 in., 38c.; 1½ in., 50c. per yard.

IMITATION WHITE LACES—

Valenciennes—½ in. wide, 2c., 3c., 4c., per yard; ¾ in., 6c., 7c., 8c. per yard; 1 in., 10c. to 15c. per yard; 1½ and 2 in. 17c. to 25c. per yard.

Antique—2½, 3, 4 to 6 in., 12½c. to 25c. per yard.

Torchon—¾ to 3 in. wide, 5c. to 30c. per yard.

Oriental Laces in Beige, Creme, Coffee and White, 5c. to 50c. per yard.

LACE VEILINGS—

Imitation Thread Spot, 13 in. wide, 15, 20, 25c. per yard.

Chenille, Small Spot, 12 in. wide, 20, 25, 30. per oard.

Black Beaded Net, 12 in. wide, 30, 35c. per yard.

Spot Net on Tinsel, Gold on Black, Silver on Black, Steel on Black, 12 in. wide, 12½c. per yard.

Knit Goods Department

- Ladies' Sleeveless Wool Jackets, in Cardinal, Navy Blue, Brown and Black colors ; three sizes, S.W. women's, O.S. women's, \$1.00, \$1.25, \$1.50, according to quality.
- Ladies' Imitation French Cardigan Jackets with Sleeves, three sizes, S.W. women's, O.S. women's, \$2.00 each.
- Ladies' Wool Gaiters, plain knit, fine Shetland wool, in Black, White, Brown, Cardinal, Navy Blue and Grenat colors ; sizes, from 12 to 30 inches ; 35c. to \$1.00 per pair.
- Ladies' Wool Hoods, hand made, fine material, in Sky, Cardinal, Black, Navy, Seal and Grenat colors ; 75c., \$1.00, \$1.25 each.
- Misses' Hoods, fine zephyr yarn, all the leading shades ; 60c. to \$1.25 each.
- Infants' Hoods, in White, Sky, Pink, Cardinal and Dark colors ; 30c., 40c., 50c., 60c., 70c., \$1.00 each.
- Ladies' Boating and Shoulder Wraps, German Knit Shawls, in White, Sky, Apricot, Cardinal and Grenat shades, ranging in prices from 75c. to \$5.00 each.
- Three Corner Shoulder Wraps, in all the colors, from 25c. to 75c. each.
- Promenade Scarfs and Clouds, in the most fashionable shapes and all the new colors ; 65c. to \$2.50 each.
- The Peg Woffington is to be a very popular Head and Neck Wrap this season, in fancy colors—Red and White, Sky and White, Pink and White, Creme and White, also in the self colors ; price \$1.25 to \$2.50 each.

Skirt Department

- Ladies' White Skirts, with tucks and frill, each..... \$0 50
- Ladies' White Skirts, made with cluster tucks and Hamburg embroidery, each 75c., \$1.00, 1 25
- Ladies' White Skirts, with wide embroidery and tucks, each... \$1.50, \$1.75, \$2.00 to 3 50

C LORED SKIRTS—

- Ladies' Melton Cloth Skirts, knife plaited, piped band, each..... 50c., 75c., 1 00
- " French Felt Skirts, in different colors, each..... 75c., \$1.00, \$1 25 to 2 00
- " Black Alpaca Skirts, with yoke nicely quilted, each.... \$1.00, \$1.25, \$1.75 2 00
- " " Italian Cloth Skirts, with deep quilting, each... \$2.00, \$2.25, \$2.50 to 4 00

Small Wares Department

SEWING COTTONS—

Kerr's & Clark's Sewing Cottons, 3c. per spool; 36c. per doz.
Kerr's colored Sewing Cottons, 3c. per spool.

KNITTING AND CROCHET COTTONS—

Wm. Parks & Sons' Knitting Cottons, White; Nos. 8 to 20, 4c. per ball.
" " " " Navy Blue, Red; Nos. 8 to 20, 6c. per ball.
" " " " other colors; Nos. 8 to 20, 5c. per ball.
Clark's Crochet Cotton, White; Nos. 4 to 40, 4c. per ball.
" " " " Colored; Nos. 4 to 40, 6c. per ball.

LINEN THREADS—

Lindsay, Thompson & Co's Black, 100 yards spool; Nos. 30 to 70, 5c. per spool.
" " " " 200 " " 8c. "
Finlayson, Bousfield & Co's Grey, 100 " " 5c. "
" " " " 200 " " 8c. "
Dunbar, McMaster & Co's White, 200 " Nos. 40 to 70, 10c. "
White Linen Floss; Nos. A A to C, 4c. per bunch.

SEWING SILKS AND TWIST—

Belding, Paul & Co's 50 yard Silk spools, 5c. per spool, 60c. per doz.
" " " " 100 " " 10c. " \$1.20 "
Twist, 10 yards spool, 2c. per spool, 24c. per doz.
Filoselle, 8c. per skein.

DRESS SHIELDS AND STEELS—

The "Kleinert" Stockinet, Nos. 1, 2, 3; 25c., 30c., 35c.
Rubber Dress Shields, covered:
Quality N covered with Nainsook, all sides, 35c. per pair.
" E " " Silk, " 30c. "
" D " " Nainsook, two sides, 30c. "
" R " " Cotton, " 15c. "
" W " " Sateen, " 30c. "
" T " " Cotton, " 12½c. "
White covered Skirt Steels in sets, 15, 18, 21 inches; 10c. per set of 3.
Skirt Steels in Black and White, 12, 14, 16, 18, 20, 22, 24 inches; 10c., 12c., 14c., 15c.
per set of 3.
Covered Waist Steels, in Black and White, 4c. each, 45c. per doz.
Dress Belting, in White, Black and Grey, 3c. per yard.

ALPACA BRAIDS—

Colored Llama Braid, No. 65, 1c. per yard.
Black Skirt Binding, No. 65, 2c. per yard; No. 73, 3c. per yard; No. 77, 3c. per yard.
Full line of Black Silk, Black Mohair, Black Alpaca, Fancy Gilt and Silver mixed Braids
of the latest styles, for trimming.

WHITE HERCULES BRAID—

¼ in.	⅜ in.	½ in.	⅝ in.	¾ in.	1 in. wide.
2c.	3c.	3c.	4c.	5c.	6c. per yard.

Cotton Tapes, in White and Black, Nos. 00 to 8, 2 bunches for 5c.
Stay Binding, Twilled, in Black and White, 8c. per roll.

*Small Wares Department—Continued.***CRETONNE FRINGES—**

We show an immense stock of Cretonne Fringes, in great variety of newest styles.
Bright and rich color effects.

15	patterns	2½	inch	wide	at	12½c.	15c.	per	yard.
15	"	2¾	"	"	"	17½c.	"	"	"
15	"	3½	"	"	"	25c.	"	"	"
10	"	4	"	"	"	30c.	"	"	"
10	"	4½	"	"	"	35c.	"	"	"

Button Department**DRESS AND CLOAK BUTTONS—**

		Per doz.
LATEST novelties in Metal Buttons, to match all desirable shades.....	8c. to	60 cents.
Fancy Jet Buttons, in new and chaste designs.....	8c. to	50 "
Dull Jet Buttons, the latest patterns.....	8c. to	40 "
Black Ball Crochet Buttons.		
Flat Black, Plain and Fancy Crochet Buttons.		
New Patterns in Horn and Ivory Buttons, all colors.....	5c. to	20 "
Fancy Colored Pearl Buttons, 18, 20, 22, 24 lines.....	35c. to	90 "
Plain and Fancy White Pearl Ball Buttons.....		40 "
Pearl Buttons, inlaid with steel.....	50c. to	90 "
Colored Roman Pearl Buttons.....		7½ "
White Pearl Buttons, 18, 20, 22, 24 lines.....	8c. to	20 "

Eaton's 5 cent Button Counter.

"	10	"	"	"
"	15	"	"	"
"	25	"	"	"

Trimming Department

Military Braids, Tubular Braids, Fancy Braids, Fancy Silver and Gilt Mixed Braids, all widths and colors.

Feather Trimmings in all the fashionable colors and widths.

Fur Trimmings in Black, Seal, Brown, Black and Seal, Opossum, Raccoon, Silver, Fox and Grey Rabbit, all widths.

Chenille Loops, Chenille Ornaments, Chenille Ruching, Chenille Fringes, Passementeries, Jet Gimps, Silk Gimps, Insertions.

Corset Department

	Per pair.
The Oxford Corset, in Drab, side steels and spoon busk, nicely embroidered, only.	\$o 45
The Sensation Corset, in Drab, double busk and side steels, embroidered with silk, only.	o 50
Little Beauty Corset, in Drab, Black and Scarlet, corded, warranted unbreakable, embroidered, side steels and double busk, only.	o 60
Paris Corset, in Black and Scarlet, in sizes from 18 to 27 in., nicely embroidered, double busk and side steels, perfect fitting.	o 65
Patti Corset, in Grey and White, made of the best Jean, corded, glove-fitting, embroidered with silk, only.	o 75
Faultless Corset, in Drab and White, corded, double side steels over hips, double busk, embroidered, warranted unbreakable.	
Cordaline Corset, heavily corded, guaranteed not to break, embroidered, perfect fitting, strong double busks and side steels.	o 75
Zeoline Corset, heavily corded, embroidered with silk, nicely finished, only.	o 90
Tampico Stayed Corset, with extension back, boned with a new material called Sisaline, will not break, and is more pliable than whalebone, only.	1 00
Health Corset, with shoulder strap and elevated busk, heavily corded, double busk and side steels, in Grey, White and Old Gold.	1 00
Beauty Corset, German woven, side steels, scooped and embroidered at top, modelled.	1 00
Tricora Health Corset, with shoulder strap and back supporter attached, elevated busk, corded across the hips and embroidered with silk, only.	1 25
Thomson's Glove-fitting Corset, in Grey and White, boned with pure whalebone, spoon busk.	1 25
Nursing Corsets, in Drab only, boned with Coraline, made of the best English Coutil, side steels and double busk, only.	1 25
No. 75 Corset, in Black and Scarlet, heavily corded, each cording stitched with colored silk, double busks and side steels.	1 50
Unbreakable Side Corset, German woven, 500 bones, double steels over hips, scooped top, stitched with silk, modelled.	1 50
Abdominal Corset, in Drab, embroidered with silk, heavily corded, double busk and side steels, extra long, specially adapted for stout ladies.	1 75
Western Favorite Corset, German woven, heavily boned, each bone stitched with silk, modelled, scooped top and bottom, in blue and scarlet.	2 00
750 Bone Corset, German woven, thoroughly boned with pure whalebone, superior finish, extra long, embroidered and scooped at top and bottom.	2 00
Misses' and Children's Corsets and Waists, from.	o 45
A full assortment of Crompton's Coraline Flexible Hip Corsets; also Ball's, Warner's and Thomson's, at the lowest market prices.	
Thomson's Unbreakable Busks, from 10c.	
Corset Busks, covered with cloth, in Grey and White, only 7c. and 10c. per pair.	

Parasols and Umbrellas

Cotton Parasols, 50c., 65c., 85c., 90c.

Mexican Silk Parasols, with paragon frames, \$1.25, \$1.50, \$1.75, \$2.00, \$2.25, \$2.50, \$2.75, \$3.00, \$3.50.

Satin Parasols, 75c., 98c., \$1.25, \$1.50, \$2.00, \$2.25, \$2.50, \$2.75, \$3.00, \$3.50, \$4.00.

UMBRELLAS—

Alpaca, 75c., 90c., 98c., \$1.00, \$1.25, \$1.50.

Silk, \$1.75, \$2.00, \$2.25, \$2.50, \$2.75, \$3.00, \$3.50, \$4.00, \$4.50, \$5.00.

Fancy Goods Department

LADIES' LEATHER HAND SACHELS—

Imitation Seal Leather Bag, with outside pocket, and braided trimmings, in Black or Ecru, 40c. and 45c.

Ball-Shaped Bag, in imitation of Alligator Leather, 65c.

Imitation Alligator Satchel, in Black or Tan, 75c.

Antique Leather Bag, raised figures, extension bottom, 85c.

Black Leather Satchel, with double outside pocket, 90c.

Square Ecru Leather Satchel, covered, outside pocket, \$1.00.

Alligator Leather Satchel, oval bottom, nickel-plated frame, in Black or Tan, \$1.15 and \$1.25.

Black and Ecru All-Leather Bag, double catch, extension block bottom, lined with leather, \$1.25.

Genuine Seal Satchels, extra change pocket, nickel-plated frame, leather lined, \$1.75.

Alligator Bag, with covered frame and double pocket, \$1.75.

Mottled Leather Club Bag, leather lined, \$1.85.

Alligator Bag, with calf trimmings, extension block bottom, nickel-plated frame, in Black or Tan, \$2.00 to \$2.75.

Grain Leather Tourist Bag, leather lined, and covered outside pocket; colors, Tan and Cardinal.

Ladies' Plush Satchels in Cardinal, Old Gold, Myrtle, Brown, Bronze, Olive, \$2.75 to \$8.00.

Picnic and Lunch Baskets, 12½c., 15c., 25c.

Purses in Leather and Plush, 5c. to \$2.00.

Ladies' Leather Belts in Black or Tan.

" Fancy and Plain colored Canvas Belts.

" White Canvas Belts.

Boys' Leather and Canvas Belts, in striped and plain colors.

Shawl Straps at 15c., 20c., 25c. to 60c.

SCHOOL BAGS—

In Leather, 25c., 35c., 45c., 50c.

Perfumery and Toilet Articles

EXTRACTS—

Patchouly, Stephanotis, Millefleurs, West End Bouquet, White Rose, Jockey Club, Magnolia, Violet, Moss Rose, Heliotrope Bouquet, Princess Louise Bouquet, Tea Rose, Village Nosegay Bouquet, Sweet Briar, Opopanax, Essence of Musk: $\frac{1}{2}$ oz., 20c.; 1 oz., 30c.; 2 oz., 60c.

SOAPS—

MORSE'S SOAPS.—Pure Glycerine Bar Soap, 2 bars for 25c.; Extra Perfumed Toilet Soaps, 3 assorted tablets in a box, 2 boxes for 25c.; Royal, 2 cakes for 5c.; Louise, 5c.; Transparent Glycerine, 5c.; Anchor Castile, 5c.; Anchor Assorted, 5c.; Oatmeal, 7c.; White Castile, 7c.; Honeysuckle, 7c.; Magnum Honey, 7c.; Bouquet, 7c.; Honey, 7c.; Magnum Glycerine, 7c.; Transparent Glycerine, 7c.; Sweet Briar, 8c.; Sweet Briar Glycerine, 8c.

WRISLEY'S SOAPS.—Uncle Sam, 2 cakes for 5c.; Morning Glory, 5c.; Apples, 5c.; White Castile, 7c.; Cochin Cocoa Oil, 7c.; Crown Honey, 12 $\frac{1}{2}$ c.; Clover Honey, 12 $\frac{1}{2}$ c.; Carbollic, 12 $\frac{1}{2}$ c.; Oatmeal, 12 $\frac{1}{2}$ c.; Brown Windsor, 12 $\frac{1}{2}$ c.; Crown Glycerine, 12 $\frac{1}{2}$ c.

OAKLEY'S SOAPS.—Elder Flower, 7c.; Tulip, 7c.; Turtle Oil, 7c.; Windsor, 7c.; Rose, 7c.; Wild Rose, 10c.; Full Hand, 10c.; Honey, 10c.; Elder Flower, 10c.; Turtle Oil, 10c.; Windsor, 10c.; Rose, 10c.; Glycerine, 10c.; Elder Flower, 12 $\frac{1}{2}$ c.

COMBS AND BRUSHES—

Dressing Combs, Black Rubber, 5c., 6c., 8c., 10c., 12 $\frac{1}{2}$ c., 15c., 18c., 20c., 25c., 30c.

" " Celluloid, 25c.

" " Bone, 5c., 18c., 30c.

Fine Combs, Ivory, 13c., 15c., 20c., 25c.

" " Rubber, 5c., 6c., 8c., 10c., 12c., 15c., 20c.

Pocket Combs.

Hair Brushes, solid wooden back, 25c.

" " plain backs, 40c., 50c., 60c., 75c., \$1.00.

" " riveted backs, 25c., 75c., \$1.00.

" " Florence, with fancy oval backs, 45c., 60c., 70c., \$1.00.

" " Florence, with fancy square backs, 60c., 90c., \$1.00.

" " metallic, with wooden backs, 25c.

" " metallic, Florence backs, 50c., 60c.

Nail Brushes, 5c., 10c.

Whisk Brooms, 20c., 25c.

Tooth Brushes, 8c., 10c., 12c., 12 $\frac{1}{2}$ c., 15c., 18c., 20c., 25c.

Tooth Powders, Teaberry, 25c. per bottle.

Sponges, 10c., 15c., 20c., 25c., 30c., 40c.

NOTIONS—

A large and varied assortment of Ladies' Dressing Cases, Gentlemen's Dressing Cases, Toilet Sets, Puff and Powder Boxes, Mirrors, Gentlemen's Pocket Mirrors, Glove Boxes, Handkerchief Boxes, Table Mats in sets, Note Paper, Fancy Hair Pins.

Soft Finish Cambrics, 27 inches wide, in all colors	6½ cents.	Per yard.
Glazed Linings, all colors	10	"
Silesias—Black, Drabs, Slates, Browns, and other colors, 10c., 12½c., 15c., 18c., 20	"	"
Jeans—Slates, Drabs, Browns, and other colors 12½c., 15c., 18c., 20c., 25	"	"
Black Waist Lining, with Grey and White backs 20c., 25	"	"
Grey Striped Lining, with Black backs 20c., 25	"	"
Linen Lining, in Grey 20c., 25	"	"
Corset Jeans—White and Drab 15c., 20c., 25	"	"
Book Muslins 5c., 6c., 7½c., 8c., 10	"	"
Crinoline—White, Black, Grey 7½c., 10	"	"
Wiggins—White, Black, Grey, Brown 10c., 12½	"	"
Turkey Red Cottons—Plain and Twilled 10c., 12½c., 15c., 20c., 25	"	"

Baldwin's Wools, Peacock's Wools, Victoria, Berlin Fingering, Ice and Frosted Wools.
Canadian Yarns, in common and high colors.
Write for samples and prices.

Linen Table Covers, dice pattern, with colored stripe :
6/4 size..... \$1.00, \$1.25, \$1.50 each.
8/4 " \$1.25, \$1.50, \$1.75 each.
10/4 " \$2.25, \$2.35, \$2.75, \$2.90, \$3.25 each.

Wool Table Covers, plain centre, with Silk Embroidered edges :
7/4 size..... \$1.25 each.
8/4 " \$1.90, \$2.25, \$2.50 each.

Wool Table Covers, stamped Red and Black, and Crimson and Black :
6/4 size..... 50c., 60c. each.
7/4 " 90c., \$1.25, \$1.50 each.
8/4 " \$1.50, \$1.75, \$2.25 each.

Fancy French Tabaret, Silk and Wool, Table Covers :
8/4 size..... \$3.25, \$5.00, \$7.50 each.

Damask Fringed Towels:

Size 20 x 38 in.....	38c.	per pair.
" 20 x 42 in.....	55c.	"
" 23 x 44 in.....	65c.	"
" 24 x 45 in.....	75c.	"

*Table Cover Department—Continued.***TOWELS—Continued.****Huckaback Towels :**

Size 19 x 38 in.....	25c. per pair.
" 22 x 44 in.....	30c. "
" 20 x 40 in.....	35c. "
" 20 x 40 in.....	40c. "
" 24 x 45 in.....	45c. "

Cotton Towels, Bleached :

Size 14 x 27 in.....	9c. per pair or 50c. per doz.
" 19 x 32 in.....	18c. "
" 24 x 42 in.....	20c. "
" 21 x 49 in.....	30c. "

Cotton Towels, Unbleached :

Size 17 x 24 in.....	10c. per pair.
" 17 x 24 in.....	12½c. "
" 18 x 27 in.....	15c. "
" 20 x 36 in.....	18c. "

Bath Towels, 30c., 35c., 40c., 50c., 60c., 80c., \$1.00, \$1.20, \$1.50 per pair.

Roller Bath Towels, 2½ yards long, 30c., 40c., 60c., 75c. each.

Linen Department

This department is filled with a well-selected stock of the very best makes of Irish Linen, of direct importation.

Unbleached Table Linen :

44 in. wide.....	20c. per yard.
46 "	25c. "
52 "	28c. "
50 "	30c. "
54 "	35c., 40c., 45c., 60c. per yard.
58 "	50c. per yard.
60 "	65c. "
62 "	75c. "
64 "	80c. "
72 "	\$1.00, \$1.25 per yard.

Bleached Table Linen :

56 in. wide.....	45c. per yard.
58 "	50c., 55c. per yard.
60 "	60c. per yard.
62 "	65c., 75c., 85c., \$1.00 per yard.
72 "	\$1.10, \$1.25, \$1.50 per yard.

Red and White Damask Table Cloth :

45 in. wide.....	35c. per yard.
54 "	40c., 45c. per yard.
58 "	50c., 55c., 60c., 65c. per yard.
72 "	70c., 75c. per yard.

Blue and Red Damask Table Cloth :

58 in. wide.....	65c., 75c. per yard
50 "	45c., 50c

*Linen Department—Continued.***Brown Holland :**

30 in. wide..... 10c., 12½c., 15c., 16c., 18c., 20c. per yard.

Irish Linen, Bleached :

36 in. wide.....40c., 75c. per yard.

32 "50c., 60c. "

Butchers' Linen :

33 in. wide.....18c., 20c. per yard.

36 "23c., 25c., 27c. 30c. per yard.

Linen Diaper :

36 in. wide.....18c., 20c., 25c., 35c., 40c. per yard.

Table Napkins, Bleached :

4/8 size.....50c. per dozen.

5/8, 3/4, 7/8 size.....75c., 80c., 85c., 90c., \$1.00, \$1.25, \$1.50, \$2.00, \$2.75,

\$3.50, \$4.00 per dozen.

Bleached Table Cloth, 2½ yards long, with twelve Napkins to match—

\$3.00, \$3.50, \$3.90, \$4.50, \$5.50 for full sets.

Colored and White Doylies, Round and Square, fringed edge—

60c., 80c., 95c., \$1.10, \$1.35, \$1.40 per doz.

Marseilles Toilet Sets, with five pieces, 10c., 12½c., 15c., 18c., 25c. per set.**Cretonne Toilet Sets, fringed border, of five pieces a set—**

7c., 10c., 12½c., 15c., 25c., 35c., 45c. per set.

Figured Sateen Toilet Sets, ten pieces, \$1.25 per set.**Antimacassars, Cretonne with lace border, 10c., 12½c., 25c., 38c., 50c.**

Woollen Department

White Flannel, all-wool :

22 in. wide.....23c. per yard.

24 "25c. and 30c. per yard.

25 "32c. per yard.

26 "35c. "

27 "45c. "

29 "50c. "

36 "60c. "

Scarlet Flannel, all-wool :

23 in. wide.....20c., 25c. per yard.

27 "35c. per yard.

26 "30c. "

29 "40c. "

30 "45c. "

Heavy Blue Flannel, all-wool : recommended for its washing qualities.

26 in. wide.....30c. per yard.

27 "35c. "

28 "40c. "

29 "45c. "

Grey Flannel, all-wool : perfectly free from grease. Manufactured expressly for our own trade. Plain and twilled, in 3 shades of grey

25 in. wide.....25c. per yard.

26 "30c. "

28 "33c. "

29 "35c. "

*Woollen Department—Continued.***Fancy Shirting Flannel, all-wool :**

29 in. wide.....35c., 38c., 40c., 45c. per yard.

Fancy Shirting Flannel, Union :

28 in. wide.....25c. and 30c. per yard.

Opera Flannels, in Scarlet, Navy, Light Blue, Pink, Light and Seal Brown, Myrtle, and Bronze Green :

22 in. wide.....25c. per yard.

25 in. "35c. "

27 in. "40c. "

Salisbury Flannel, Scarlet or Blue, with Black spot and figure :

21 in. wide.....30c. per yard.

26 in. "35c. "

Home-Spun Flannels, various patterns :

28 in. wide.....25c. per yard.

Unbleached Canton Flannel, heavy twill back :

30 in. wide.....7½c., 8c., 9c., 10c., 12½c., 15c., 18c. per yard.

Bleached Canton Flannel :

30 in. wide.....10c., 12½c., 15c., 18c., 20c., 25c. per yard.

Colored Canton Flannels, in Brown, Cardinal, Bronze, Myrtle, Navy, Royal, Old Gold, Scarlet :

27 in. wide.....15c. and 18c. per yard.

Table Oil-cloth, marble and fancy patterns :

45 in. wide.....30c. per yard.

54 in. "45c. "

Shelving Oil-cloth, with scalloped edge, 8c. per yard.**Tweeds, all-wool, full variety :**

27 in. wide.....45c., 50c., 75c. per yard.

Navy Blue Serge :

27 in. wide.....35c. per yard.

Blankets, all wool :

Size 56 x 74 in.\$1.75, \$2.00 per pair

" 60 x 76 in.2 50 "

" 66 x 84 in.3 00 "

" 68 x 88 in.3 50 "

" 70 x 70 in.4 00 "

" 72 x 72 in.4 50 "

" 72 x 94 in.5 00 "

Cotton Department.

Plain Bleached Sheeting :

7/4 or 63 in. wide.....25c. per yd.

8/4 or 72 "25c. and 28c. per yd.

9/4 or 81 "30c., 35c., 38c., 40c. per yd.

10/4 or 90 "35c., 38c., 40c. per yd.

Twilled Bleached Sheeting:

8/4 or 72 in. wide.....25c., 28c., 30c., 35c. per yd.

9/4 or 81 "30c., 35c., 40c. per yd.

10/4 or 90 "35c., 38c., 40c. 45c. per yd.

*Cotton Department—Continued.***Pillow Cotton Bleached:**

40 in. wide.....	12½c. and 15c. per yd.
42 "	16c. " 16c. "
44 "	18c. " "
46 "	18c. " 20c. "
48 "	25c. " "

Feather Ticking:

Blue and White Narrow Stripes, 31 in. wide, 10c., 12½c., 15c. per yd.
 Blue and White, Red and White, Broad Stripe, 33 in. wide, 15c., 18c., 20c., 25c. per yd.
 Wide and Narrow Stripe, Blue and White, 36 in. wide, 25c., 27c., 30c. per yd.

Straw Ticking:

Plain, 54 in. 10c., 12½c.
 Stripe, 54 in. 10c., 11c., 12½c., 15c., 18c., 20c.

Our White Cottons are the very best makes, 36 in., 7c., 8c., 9c., 10c., 12½c., 15c. per yd.
 Special line 36 in. wide, soft finish, easily sewed, 9c. per yd.

Factory, grand value, 36 in. wide, from 5c. up.

Cotton Shirtings, Colored Checks and Stripes, 27 in. wide, 7½c., 10c., 12½c., 15c. per yd.

Cottonade and Denims, 12c., 15c., 18c., 20c. per yd.

White Duck, 18c. and 23c. per yd.

Plain Unbleached Sheetings:

8/4 or 72 in. wide.....	20c., 23c., 25c., 30c. per yd.
9/4 or 81 "	23c., 30c., 35c. per yd.
10/4 or 90 "	27c., 33c., 40c. per yd.

Twilled Unbleached Sheeting:

8/4 or 72 in. wide.....	25c., 30c., 35c. per yd.
9/4 or 81 "	30c., 35c., 38c., 40c. per yd.
10/4 or 90 "	30c., 35c., 40c. per yd.

Cretonnes: Plain, 27 in. wide, 10c., in 30 patterns.

" Twilled, 30 in. wide, 12½c., 15c., 17c., 18c., 20c., 25c. per yd.

" Reversible both sides, 30 in. wide, 25c., 30c., 35c., 40c. per yd.

Prints: Fast colors, 24 in. wide, 5c., 7½c., 9c., 10c. per yd.

" " 24 " 10c., 12½c. per yd.

" Crum's fast colors, 32 in. wide, 12½c. per yd.

Carpet Department

PLAIN HEMP CARPETS, Stripes—

32 in. wide.....	10c., 12½c. per yd.
34 "	12½c., 15c. per yd.
36 "	15c., 18c., 20c. per yd.

DUTCH HEMP CARPETS—

34 in. wide.....	12½c., 15c. per yd.
36 "	18c., 20c., 25c. per yd.
Twill Hemp, 34 "	15c. per yd.
36 "	18c., 20c. per yd.

UNION OR KIDDERMINSTER CARPETS—

All full 36 inches wide.

Ordinary patterns, 30c., 35c. per yd.

Superior, beautiful pattern, and pattern on both sides, 40c., 45c., 50c., 55c. per yd.

Extra Heavy Dutch Wool, 65c. per yd.

*Carpet Department—Continued.***ALL-WOOL CARPETS, Extra Patterns—**

Full Two-Ply, 65c., 75c., 85c. per yd.

All-Wool, Brussels patterns, 90c., \$1.00 per yd.

All-Wool, Moresque pattern (looks like Brussels), \$1.00, \$1.10 per yd.

These prices for wool carpets are actually below the ordinary wholesale price.

TAPESTRY CARPETS—

Plain Mottled Tapestry, 28c., 30c., 33c. per yd.

Figured or pattern, 35c., 38c., 40c. per yd.

Extra large patterns, 40c., 45c., 50c., 60c., 65c. per yd.

The very best Tapestries, 75c., 85c. per yd.

BRUSSELS CARPETS—

Best Jute Brussels, 55c., 65c. per yd.

Best Wool Four Frame Brussels, 75c., 85c., \$1.00 per yd.

Very Best Wool Five Frame Brussels, \$1.10, \$1.25 per yd.

STAIR CARPETS—

Hemp, in 2/4 widths 6c., 8c., 10c., 12c., 15c. per yd.

Hemp, " 5/8 " 12 1/2 c., 15c. "

Dutch, " 2/4 " 12 1/2 c., 15c., 20c. "

Dutch, " 5/8 " 20c., 25c. "

Tapestry, " 2/4 " 35c., 45c., 50c. "

Tapestry, " 5/8 " 50c., 60c. "

Wool, " 2/4 " 30c., 35c. "

Wool, " 5/8 " 38c., 50c. "

BORDERS—

Borders for all Tapestry, above 50c. per yd., at 40, 45 and 50c. per yd.

Borders for all good Brussels.

Borders for all Wool Carpets.

COCOA MATTING—

In 2/4 widths 25c., 35c. per yd.

" 3/4 " 38c., 50c. "

" 4/4 " 50c., 70c. "

" 6/4 " 75c. "

Imitation Cocoa Matting, stripes, 25c., 35c., 40c. per yd.

WOOL DRUGGETING—

30 in. wide 20c., 25c., 30c. per yd.

40 " 40c., 45c. "

46 " 50c., 60c. "

OIL-CLOTH—

Hessian Back, fancy pattern, 1/2, 5/8, 3/4 and 4/4 widths, 18c. per square yard.

Full Oil Back, soft finish and good patterns, in 2/4, 5/8, 3/4, 4/4, 5/4, 6/4, 8/4 widths, 23c., 25c. per square yard.

Extra heavy in same widths, 32c., 35c., 40c., 50c. per square yard.

These Oil-cloths all have the Soft Linoleum finish, and do not crack or break.

ENGLISH LINOLEUMS—

This class of goods is a composition of cork, rubber and glue, and besides giving four times the wear of an oil-cloth, is much pleasanter to the feet, and does not break; to be had in 4/4, 8/4, 12/4 and 16/4 widths, 60c., 75c., 85c., \$1.00 per square yard, according to the weight.

*Carpet Department—Continued.***MATS AND RUGS—**

Door Mats, yarn beam, 30c., 35c., 40c.

Tapestry, 50c., 55c.

Velvet or Wilton, 75c., 90c., \$1.00, \$1.25.

Tapestry Rugs, in all sizes, 65c., 75c., 90c., \$1.00, \$1.25.

Velvet Rugs, in all sizes, \$1.00, \$1.25, \$1.50, \$1.75, \$2.00, \$3.00.

Smyrna Rugs: These Rugs are all wool, and both sides alike, bright colors, and will outwear any other make; to be had in all sizes, from door mat up to large hearth rugs, over 20 patterns, \$1.00, \$1.25, \$1.50, \$1.75, \$2.00, \$2.50, \$3.00, \$3.75, \$4.50, \$5.00, \$6.00

Our Rug Department is one of great attraction, and the variety we show is something immense, and includes every style, color and shape.

Sheepskin Mats, in Cardinal, Red, Blue, Brown, Gold, Green, Drab, Black and White; sizes, 12 x 28 in., 90c.; 14 x 30 in., \$1.00; 14 x 32 in., \$1.25; 16 x 36 in., \$1.50; 20 x 42 in., \$2.00; 24 x 50 in., \$3.00.

Hearth Rugs, \$5.00.

25 per cent. extra for Black.

CRUMB-CLOTHS—

In Wool, Drugget or Felt, \$2.50, \$3.00, \$3.50, \$4.00, \$4.50, \$5.00.

All-Wool, \$4.00, \$5.00, \$6.00.

Linen, \$1.00, \$1.25, \$1.50, \$2.00, up to \$6.

BED MATTRESSES—

Mixed, Seaweed, and Wool, single, \$2.50, \$3.00.

" " " double, \$3.50, \$4.00, \$5.00.

Wooven Wire Spring Mattresses, full sizes, \$3.00, \$4.00, \$4.50, \$5.00, \$6.00; single sizes about 75c. less.

Pure Feather Pillows, \$1.00 each.

Iron Beds, English make; the most convenient and cleanly bed made; single sizes, \$4.50 and \$6.00; double, \$4.50, \$5.00, \$5.75, \$6.50, \$7.00, \$8.00, \$9.00.

Lace Curtains Department

We cannot say too much for this department. It is one of our best departments. We show a variety of three hundred different patterns, and this fall, without doubt, we show the best assortment we ever offered.

Full pattern Curtains, 2½ yds. long, 50c. and 60c. per pair.

" " 3 " 85c., \$1.00, \$1.25 per pair.

" " 3½ " \$1.25, \$1.50, \$1.75, \$2.00, \$2.25 per pair.

" " 4 " \$1.50, \$1.75, \$1.90, \$2.00, \$2.25, \$2.50, \$2.75, \$3.00,

\$3.50, \$4.00, \$4.50, \$5.00, \$5.50, \$6.00, \$6.50, \$7.00, \$8.00, \$9.00, \$10.00, \$11.00, \$12.00 per pair.

Taped and plain edges, same price. To be had in cream or white. The newest pattern is taped on one side with a very heavy border.

LAMBREQUINS—

Full size, from 25c. to 75c. each.

CURTAIN NETS—

Plain Scrim Cloths in Cream or colored, 20c. per yard.

Curtain Net, 12 in. wide.....5c., 7c. per yard.

" 18 "9c., 10c., 12½c., 15c. per yard.

" 30 "12½c., 15c., 18c. "

" 36 "15c., 20c. per yard.

" 45 "15c., 20c., 25c. per yard.

" 54 "20c., 25c., 30c. "

*Lace Curtains Department—Continued.***CURTAIN NETS—Continued.**

Colored Cotton Damasks, 10c., 12½c., 15c., 18c. per yard.

Colored Wool Damasks, 54 inches wide, 75c., \$1.00 per yard.

The new Felt Cloth, 72 in. wide, \$1.25 per yard, to be had in Bronze, Crimson, Gold and Brown.

Raw Silks for Curtains, 54 inches wide, 75c., 90c., \$1.00, \$1.25 per yard.

WINDOW SHADES—

In these goods the variety is very great, covering over one hundred patterns, 3 x 6 feet plain, with spring roller, 65c. each; 3 x 6 feet, with dado pattern and spring roller, from 90c. up to \$3.00, according to pattern. These are the most economical and convenient blinds made; in sending for these, state width and length of window.

Hartshorn Spring Rollers, 25c. each.

Window Cornice Poles complete, 75c., 90c., \$1.00 up.

CARPET SWEEPERS—

Best Grand Rapids Carpet Sweepers, make no noise, no dust, sweep clean; a child can use them. Price, \$2.00, \$2.50, \$3.00, \$3.25.

MEN'S FURNISHING DEPARTMENT**UNDERWEAR—**

In this department we are selling a large line of Men's Undershirts and Drawers at 50c. each, worth \$1.00. They are composed of Merino in Grey and White, Balbriggan, Gauze and Union goods.

Men's Ribbed Shirts, in Grey and Flesh colors, 25c., with Drawers to match, 25c.

Men's Double-Breasted Shirts, in Heavy Ribbed Shetland colors, 45c. each, with Drawers to match.

Men's Extra Heavy Double-Breasted Lamb's-Wool Shirts, ribbed, 18 oz. weight and 36 inches long, in Grey, Flesh and Shetland colors, at 65c. each, with Drawers to match, or \$1.25 a suit.

We show 25 different styles of Men's Wool Underwear, in light and heavy makes, suitable for fall and winter wear; made in 3 sizes—S. Men's, Men's, O.S. Men's. Price ranging from \$1.50 to \$5.00 per suit, comprising the best Canadian, English and Scotch manufactures. A visit to our Gents' Furnishing Department is worthy of attention.

Full lines of Boys' Undershirts and Drawers, in Merino and Lamb's-Wool goods.

UNLAUNDRIED WHITE SHIRTS—

Good Cotton three-ply bosom, with wrist bands, well made and neatly finished. Sizes, 12½, 13, 13½, 14, 14½, 15, 15½, 16, 16½ inch collar band. Price, 45c. each.

White Dress Shirts, with reinforced bosom, three-ply Linen fronts and bands or cuffs, 65c., 75c., \$1.00, \$1.25 and \$1.50 each. Our White Shirts are made from the best Cottons and Linens, with the New Sectional Yoke, which prevents their riding on the neck.

Men's Cambric Shirts, in all the sizes. Prices, 65c. to \$1.50 each, with 2 collars or collar attached.

Boys' White Shirts, dressed, 65c., 75c., 85c. each.

Boys' Cambric Shirts, with 2 collars, 65c., 75c. each.

Men's Flannel Shirts, in Navy Blue or Grey, with or without collars. Prices, \$1.00 to \$2.25 each.

Boys' Navy Blue or Grey Flannel Shirts.

New Styles in Neckwear, Gents' Ties, Collars and Cuffs, Cuff Studs, Collar Buttons, Suspenders, Armlets, etc.

1

d

et

i

ge

n,

ze

rs

6

n,

le

ce

nd

of

es,

c.,

ms

ar

to

as,

T. EATON & CO.

Mail Order Department

IMPORTANT INFORMATION

A careful observance of the following instructions will greatly facilitate quick, correct and satisfactory returns.

*Address all letters to the Mail Order Department, T. EATON & CO.,
190 to 196 Yonge Street, Toronto, Ont.*

1st. All correspondence should bear the date of writing, also town, post office, county.

2nd. When sending for samples, mention the kind of material you wish to see, the color desired, and for what purpose the goods are to be used; also, whether light, medium, or heavy weights, and about what price goods are wanted.

3rd. Our trade is so enormous that the most desirable goods remain in stock but a short time, hence the advisability of making an early selection after receiving samples; and in order to meet the possibility of your selection being sold, it is advisable to make a second choice. Occasionally goods ordered are closed out of stock, and are not procurable, in consequence of which, please state whether we shall use our own judgment in making the selection.

We cannot send goods by express, C.O.D., with privilege of examination, as the Express Company refuse to accept goods in this manner; nor can we send goods on approval, but will cheerfully exchange any that are not as represented, the same to be returned at our expense. When returning goods to be exchanged, or for other reasons, be sure to mark distinctly your name and residence on the outside of the package, and address to the Mail Order Department, T. Eaton & Co., Toronto, Ont. Also advise us, on sending it, as to whether it has been forwarded by mail or express. When returning goods by mail, no writing of any kind is allowed inside the package, except when sent at first postage rates, which are 3c. for each half ounce. When merchandise alone is sent, the rate is 6c. for every four ounces.

Remittance can be made by post office money order, registered letter, or express money order. Goods ordered to be sent by mail must be accompanied by a remittance covering cost of merchandise and postage. Orders unaccompanied by cash will be forwarded by express, cash on delivery, when desired, but cannot be sent in that way by mail.

Customers, by sending cash in advance for payment of goods, will save the charges of the Express Company for returning money to us on C.O.D. packages.

In ordering goods, please state how the same are to be forwarded, whether by express, mail or freight.

The leading Express Companies have greatly reduced rates. We strongly advise sending by this means wherever practicable, as it ensures perfect safety.

All orders will receive our best attention.

T. EATON & CO.

T. EATON & CO.

190, 192, 194, 196 Yonge Street,

TORONTO.

Thirty-five distinct and different departments, constituting a complete world's fair.

Colored Dress Goods.
Black and Mourning
Goods.

Silks.

Velvets.

Linens.

Cottons.

Flannels.

Blankets.

Mantles.

Costumes.

Children's Mantles.

Cloths.

Furs.

Millinery.

Ladies' Underwear.

Jerseys.

Corsets.

Knitted Goods.

Ladies' Fine Shoes.

Gloves.

Umbrellas.

Hosiery.

Laces.

Ribbons.

Neckwear.

Jewellery.

Buttons.

Dress Trimmings.

Notions.

Gents' Furnishings.

Carpets.

Curtains.

Oil-cloths.

House Furnishings.

Trunks and Valises.

(SEE INSIDE OF COVER)

