

# THE COMMERCIAL

FINANCE AND INSURANCE REPORT

Subscription, \$2.00 per Annum in Advance.

Established 1882

Published Weekly.

L 20

WINNIPEG, CANADA, APRIL 26, 1902

No. 34

We Have

## Pumps Good Pumps

IRON . . .  
 Tank Pumps  
 Double Acting Force Pumps  
 Rock Pumps  
 Whalar Well Stand Pumps  
 Wrought Iron Set Length Pumps  
 Siren Force Pumps  
 Siphon Clatern Pumps  
 Nose Top Fitcher Pumps.  
 Fitted with seamless drawn brass cylinders, glass valve seats.  
 We have the latest and most improved styles of pumps on the market. Write our catalogue and prices if you want any the best.

Trick, Anderson & Co.  
 WINNIPEG, MAN.

## FLOUR

HIGHEST AWARDS at home and abroad:  
 WINNIPEG EXPOSITION  
 PARIS EXPOSITION.

Hudson's Bay Company



Four manufactured by the Hudson's Bay Company has received the highest award at the Paris Exposition and the highest awards at the Winnipeg International Exhibition. All the flour made at this company is from specially selected wheat.

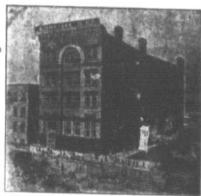
Hudson's Bay Co'y



TENTS, FLAGS AND  
 ROLLER AWNINGS

EMERSON-HAQUE  
 MANUFACTURING CO. Ltd.  
 WINNIPEG.

**CODVILLE & CO.**  
 Wholesale Grocers.



—Packers of—

**CELEBRATED GOLD STANDARD TEAS**  
 Coffees, Baking Powder and Spices.

BANNATYNE AVE. E., WINNIPEG.  
 Branches: BRANDON and CALGARY.

**BROMLEY & CO.**



Tents  
 Awning and  
 Mattress  
 Factory

Cor. Princess and Alexander St., Winnipeg

**T**OPS, Skipping Ropes, Rubber Balls, Marbles, Cloth Brushes, Whisks, Brooms, Pipes, Alarm Clocks, Jewellery, Cutlery and a full assortment of Smallwares.

WHOLESALE ONLY.

**J. McLEOD HOLIDAY**  
 173 McDermot Ave., Winnipeg.  
 Direct exporter of SENECA ROOT.  
 Write for quotations.

## Thomas Ryan & Co. Ltd.

We are carrying an immense stock of

### BOOTS AND SHOES

For the Spring and Summer trade. Our motto is good stock and close prices. Orders respectfully solicited.

**THOMAS RYAN & CO. Ltd.**  
 King and Bannatyne Sts., Winnipeg

## Summer Oxfords



Can give you a dozen different styles.

All Sizes now in Stock.

Immediate orders shipped same day as received.

**THE AMES HOLDEN CO.**  
 WINNIPEG.

F  
R  
U  
I  
T  
S



P  
R  
O  
D  
U  
C  
E

## Our Smallware Department

Has passed into stock a shipment of Ladies' Belts and Ladies' Neckwear—the very latest styles and in all leading shades. Nothing more dainty in Neckwear has ever been shown in the west. To retail from 30c to \$1.00.

We have Belts in Leather (black or colors), Velvet, Silk and Beaded Elastic, to retail from 25c to \$1.00. We have also received another delivery of Hair Goods, consisting of livery of Hair Combs, consisting of Slide Combs, Pompadour Combs, Back Combs, Hair Slides, etc.

Now is the time to sort up your stock with these goods. Send us your letter orders. They will receive prompt and careful attention.

## The Gault Bros. Co. Ltd.

IMPORTERS and  
 MANUFACTURERS  
 WINNIPEG

## For Rainy Days UMBRELLAS

A big shipment has just been put into stock, containing many desirable lines for your trade.

The coverings are of the best material and warranted never to turn green. Handles are of every conceivable pattern, and will please all your Umbrella Cranks.

Prices from \$4.75 to \$36.00. To supply many enquiring customers we have also added a line of

**BOY'S UMBRELLAS.**

They're good and will sell quick.—Price—\$6.50.

**CARRIAGE UMBRELLAS**  
 \$8.00, \$8.25, \$8.50, \$10.00.

## For Sunny Days PARASOLS

Black and Fancy and Colored. Prices from \$7.50 to \$36.00.

Handles in assorted Horn, Natural Wood, China, Black.

**MISSES' AND CHILDREN'S PARASOLS** in a variety of different patterns, from \$2.25 up.

**YOUR ORDERS** for anything in above will receive our best attention and prompt shipment.

## R. J. Whitla & Co.

LIMITED  
 WHOLESALE DRY GOODS.  
 WINNIPEG.

## GENUINE VEGETABLE PARCHMENT BUTTER PAPER

In Stock—5x13  
 12x18  
 18x24  
 24x36

We do not handle imitations.

**McALLISTER & WATTS**  
 43 Rorie St., Winnipeg.

WINNIPEG  
*Business College*

Cor. Portage Ave. and Fort St.

### PREPARE

For the active duties of a business life by taking a course at the Winnipeg Business College. Annual catalogue sent free to any address.

G. W. DONALD, Secretary.

## BUTTER

Still keeps scarce and demand is good from all sources for a fresh made article. We think prices will be maintained until after 15th of next month, at least, and would advise customers to ship often, in small lots, to feed the market while demand is good.

## EGGS

Are more plentiful and at reduced prices. There is a good demand.

We are in a good position to handle large quantities of all kinds of farm produce with advantage to our customers.

**J. Y. GRIFFIN & CO.** WHOLESALE COMMISSION MERCHANTS AND PORK PACKERS  
WINNIPEG

## WE WANT YOUR EGGS

We buy outright, for spot cash, or handle for shippers account. Don't sell until you write us. We are prepared to make liberal advances to anyone wishing to store with us.

**R. A. ROGERS & COMPANY Ltd.**

WINNIPEG

APRIL 24, 1902

## SORTING

Spring shipments having been broken into we solicit your *Sorting* orders.

Our stock of Mixed Paints, Dry Colors, Oils, Varnishes, Brushes, etc., is very complete.

Particular and careful attention given mail orders. Shipments made same day.

**G. F. STEPHENS & CO., Ltd.**

WINNIPEG, MANITOBA.

## Wholesale Crocery

Glassware, China,  
Lamps, Silverware,

New lines just received. Send your orders direct or wait for our travellers.

PORTER & CO., WINNIPEG

Established 1794.

## Hartford

Fire Insurance  
Company of Hartford,  
Conn.

Net Income:

**\$10,028,122.63**

Losses Paid Over

**\$73,000,000**

Insure in the Hartford and  
feel SECURE.

**W. W. SCRIMES,**

Supt. 216 McDermot Ave.  
WINNIPEG.

AGENTS WANTED.

**JOHN W. PECK & CO.**

MONTREAL, WINNIPEG,  
SANDWICH

Manufacturers of



**Clothing  
Furs  
Shirts**

Dealers in  
**Men's Furnishings,  
Hats, Caps**

## 45,000 TREES

20,000 Petrofsky Russian Poplar,  
10,000 Wobesli Russian Poplar,  
5,000 Russian Golden Willow,  
5,000 Russian Laurel Willow,  
5,000 French Laurel Willow.

We are offering the above quality of beautiful young trees, well rooted, about two feet high, for fall and spring delivery. Besides a good stock of small fruit flowering shrubs, Virginia Creeper, etc. This is the largest and finest lot of Russian stocks ever offered in the west. Send for descriptive price list to

**CALDWELL & CO.**

Verden Nurseries. VERDEN, MAN.

**T & B** PLUG  
AND  
CUT  
TOBACCO

Try the new four. They are giving tire satisfaction. Pays the retailer a handsome profit.

THE GEO. E. TUCKETT & SON CO., LTD.  
HAMILTON.

TEBB & PERRIN, Agents, Winnipeg

# THE COMMERCIAL

The recognized authority on all matters pertaining to trade and progress in Western Canada, including that part of the coast of Labrador, and the Province of Manitoba and the Territories.

Twentieth Year of Publication.

ISSUED EVERY SATURDAY.

Subscriptions—Canada and the United States, \$2.00 per annum in advance, or \$2.50 when not so paid; other countries \$2.50 in advance.

Charges for advertisements or stops should be in not later than Thursday morning.

Advertisements purporting to be news matter or which profess to express the opinion of this Journal, will not be inserted.

The Commercial certainly enjoys a very much larger circulation among the business community of the West and Pacific coast than any other paper in Canada, daily or weekly. The Commercial also reaches the leading wholesale, commercial, manufacturing and financial houses of Eastern Canada.

Office: 219 McDermott St. Telephone 224

D. W. BUCHANAN,  
Publisher.

WINNIPEG, APRIL 26, 1902.

## Sly Potato Operations.

Quietly and for months Americans have been buying up potatoes at Kamloops, Ashcroft and other British Columbia points," says a Tacoma, Wash. dispatch to the San Francisco Chronicle.

The potatoes have been shipped overland via some cities via Sunapee, but eventually found their way to the markets of San Francisco. The potatoes brought at the lowest market prices. They were shipped via Sunapee so that dealers in Vancouver would not get winded. This was happening when there was no apparent cause noticeable.

Suddenly it dawned on Vancouver dealers that there was money to be made in buying potatoes and storing them for shipment by boat to San Francisco. They entered the field in large numbers, buying many hundreds of tons of the best potatoes here, but secured in advance by Americans. It is claimed by some dealers that these purchases have dangerously impoverished the British Columbia market and to make matters worse were sold at low prices.

Farmers in Yakima Valley hold some ten millions of potatoes which they refuse to sell at less than \$25. The prevailing price is \$25. On account of the scarcity a sharp advance in prices is expected soon.

## Glove Trade.

The season is practically over for gloves. Manufacturers express their views as fairly well satisfied with the results, although there is considerable grumbling as to prices and terms. The perfection to which the Canadian market has been brought is not only surprising to the foreign producer, but is creating a demand that has been never before known. During the past two or three years glove manufacturers have devoted more attention to foreign trade, and it is somewhat surprising to note the number of new accounts that have been opened up in this line. This is particularly true in regard to the number of men who have opened up a glove section in connection with their shoe establishments. The country trade is now regarded as quite a profitable branch of the leather trade, rather than simply a side issue of no importance, as it was considered a few years ago.—Canadian Shoe and Leather Journal.

A cargo of Mediterranean fruit was destroyed to be sold at Montreal was lost.

The United States court for the northern district of court for the purpose of stipulate the alleged fish trust. The case, in which A. Booth & Co., of Chicago, is a trustee of the trust, is set for trial at 10 o'clock on Monday. The court held of sixty-four different species sold to fishermen from 20 to 40 cents, and increased selling prices from 20 to 60 per cent.

# MINING

## British Columbia.

The Sunnet mine distributed \$6,000 to its shareholders last week as a dividend.

The Arlington and Enterprise mines, Shewan district, shipped 90 tons of ore to smelter last week.

During the week ended Friday the 18th inst., the Bonny Creek mines shipped 12,000 tons of ore.

During the week ended the 18th inst., the Granby smelter at Grand Forks treated 9,980 tons of ore.

There is a deal on for the consolidation of the Dominion Copper Company and the Snowshoe Copper Company and Mines, Ltd., whose properties are situated in the Phoenix camp. It is understood that the negotiations are now in an advanced stage. If an amalgamation of the two companies is effected, a smelter for the treatment of the ore of both mines will be erected at some point in the Kettle River valley.

A report from Vancouver on April 20 said: After many years of vain trials a gold dredge has been built that is successfully saving the gold of the Fraser river. This dredge has been operating at Lytton on the Fraser river and in a test run there it has shown a saving of 90 per cent of the strength of these satisfactory results a fleet of three more dredges is being ordered by the operating company, the Fraser River Gold Dredging Company.

ore to that sent out from this claim in the early days of this camp.

Simon Jacob, who has been for man in charge of the underground work on the Winnipeg mine ever since Nick Cooper left the mine last year, has gone to Seattle, after having put in several months hard and successful work on the Winnipeg.

The Montreal & Boston Copper Co. is getting in shape for starting up its smelter at Boundary Falls and at the Sunnet mine for regularly maintaining a sufficient output of ore to keep the furnace running on a steady basis. It is hardly probable that the furnace will be started this month.

The local contractors to send ore to the Granby Co.'s smelter are bringing down from the mine to the railway about 20 tons a day. The new road to Ehoit is now under way, heavy teams to haul over, so the ore is brought down the old road and loaded on the railway cars at the Jewel siding about four miles from Greenwood.

The lead on the Providence, within a mile of Greenwood, has shown an average of about 12 inches of solid ore in a vein that runs from two to three feet in width. The ore is galena, zinc and lead, carrying high values in gold and silver, occasional bunches being very rich. It is claimed that the ore runs as high as one ton of gold and 200 tons silver, values as high as these having been obtained from ore shipped some years ago to the smelters at Tacoma, Everett and Puget Sound.

The big Farrell-Bacon crusher, manufactured for the B. C. Copper

work have been done in underground development of the No. 7, which is now the only mine at that part of the Boundary. Near by is the Norfolk group owned by the London & H. C. Golding company. This group is likely to be encouraged to resume work and push it to a considerable extent if developments here justify it. It is believed as there is good reason to believe that it will do, to increase the ascertained value of the mine. The City of Paris has a claim in this area. The City of Paris mine south of No. 7, have been idle for some ten years, but before they were shut down about 200 tons of ore were taken out of them and shipped to the Granby Co.'s smelter at Grand Forks. Just across the International boundary line from the City of Paris group are the Lone Star and Washington claims upon which a deal of work has been done with the result that a big body of copper-gold ore, stated to be of good grade, has been opened up. It would therefore appear that this part of the Boundary, from the Norfolk group to the Lone Star and Washington, is deserving of more active attention than it is just now receiving.

## Yukon Clean-Up.

Dawson telegrams of this week state that the clean-up of gold commenced last week with a force of two months. During the winter the greatest damage to the camp history have been the heavy snows which have been thrown upon the gold claims, insuring a aggregate catch-up estimated at \$1,000,000. The Ottawa government last week ordered the Klondike authorities to throw open for entry four good claims, lapsed and abandoned claims which are within the gold commission's office range. The gold commission's office has dealt with men regarding abandoned claims which they have tracked.

## Presentation to Thos. Lock.

Mr. Thos. H. Lock, who has been connected with Campbell, Bro. & Wilson, wholesale grocers, for many years as a manager, was the recipient of a handsome gift of some 200 claim papers at his home recently by the employees of the well known firm, with whom Mr. Lock has served for many years in connection, in order to take an active interest in the wholesale firm, and to produce business for the employees of the firm of Lock Bros. & Co. The following address accompanied the gift:—

Winnipeg, April 23, 1902.

Thos. H. Lock, Esq.,  
Dear Sir—We, the employees of Campbell Bros. & Wilson, wholesale grocers, who for many years have been associated with yourself as manager, cannot allow this, the present time when you are leaving your connection with the said firm, after many years' faithful attention to your numerous duties to pass by without conveying to you in a small way a token of high esteem and sincere respect, in which you have been, and are held by us, after years of hard work together, which enables us to recognize in you a man of successful, discerning tact and ability. We wish to express our store of regret that we will miss you when we state yet at the same time, in your new sphere of employment, we wish to express our bright and prosperous future for you, and who is so widely known and popular, possessing all the elements of a noble undertaking in all circumstances, that the others might with an advantage to improve their position. We ask you to accept from us, as a testimony of our good will and affection for you, a few dollars, and sincerely hope that that both yourself and Mrs. Lock will be blessed with health to enjoy and that the success of your new associations may ever remain unshaken.

Witnessed by W. J. Campbell, D. M. Horne, John Horne, A. D. Campbell, H. Rankin, H. McLaughlin, B. Harvey, E. C. Johnson, C. W. Duff, F. Scott, R. Duck, C. Coates, T. Willson, G. Duncanson, C. Campbell, J. Nesbitt, G. D. Dutton, M. W. White, Miss Johnston, Miss Lane, Miss Jamieson, Miss Sheppard.

In the course of the debate on the grain and flour tariff, the House of Commons, the chancellor of the exchequer, Sir Michael Hicks-Beach, announced that Cornhill would be allowed to feed young pigs on meal for stock from 100 to 150 pounds per hundredweight, instead of five pence.

## Manitoba Farm Homes—Residence of E. W. Hanna, Griswold, Man.

With the output of ore for the week ending Saturday night last, the tonnage for the year to date from the Rossland camp was brought substantially over the hundred thousand ton mark, despite the fact that two of the largest producers have only contributed to the output on a small scale as yet. During the week, the Le Roi sent out 5,800 tons; the Le Star, 270 tons; the Centre 200 tons; the Rossland, Great Western, 250 tons, and the Splitzee, 20 tons, totalling 8,080 tons for the week.

The management of the Snowshoe Gold and Copper Mines, Ltd., has been making experiments this winter with the oil process of concentration, a quantity of ore having been sent to London for this purpose. It is understood that the preliminary tests of the ore by oil process have been successful, the periodical visits of the oil method of extraction is that by it the values of copper and gold saved amount to more than by other proposed methods. The oil process is new to British Columbia. Its chief advantages is the low cost of treatment of ore, which is a great asset in low grade camps.—Phoenix Pioneer.

## Boundary District, B. C.

Geo. B. McAulay, managing director of the Cariboo-McKinney M. & C. Co. Ltd., is in the district on one of his periodical visits of inspection to the Cariboo mine at Camp McKinney.

W. T. Smith and Longley are doing work in a diamond district far out side the Greenwood City limits, in which they expect to find similar rich

Co. by the Jencks Machine Company. is now in running order at the Mother Lode mine, having this week been given a trial. After a long delay the Jeffrey elevator, required for the purpose of raising the crushed rock from the crusher, out the mine along the railroad track, has been received from Columbus, Ohio, and this, too, is now in readiness for work. More faces are being opened in the Mother Lode ore quarries, so that shortly the mill making use of the newly to keep pace with the enlarged output of ore that this part of the camp will be making use of the second furnace at the B. C. Copper Co.'s smelter is being deferred until this increased output from the quarries is well assured.

No. 7 Mining Co., Ltd.—The ledge was at the 300-ft. level of the No. 7 mine, in Central camp, a few days ago. It is intended to now drift on the vein at this depth, so that interesting developments may be looked for in month or two hence, the vein on the 60 and 120-ft. levels having shown considerable improvement, both in size and grade of ore in places along its course. Notwithstanding that for nearly half a century the spring and early winter months when the roads are too soft for heavy hauling has been the time of least output practicable, the No. 7 has, since its power plant was put in last year, sent out nearly 1,000 tons of ore to the B. C. Copper Company's smelter. The ore is quartz, mineralized with gold, silver, lead and zinc. It varies in width from 18 inches to several feet. Altogether some 6,000 lineal feet of







# The Time Has Come

For you to look at FALL SAMPLES

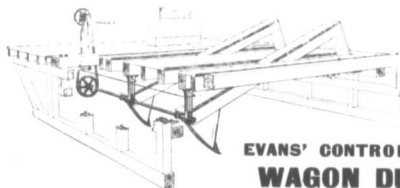
Our judgment, experience and mechanical skill is at your service  
When you buy our goods you get all the value possible.  
Not the "Just as Good" but the "BEST."

## DONALD FRASER & CO.

Manufacturers of Fine Clothing

WHOLESALE

WINNIPEG—126 Princess Street.  
MONTREAL—502 St. Paul Street.



GET  
THE  
BEST

THE  
**EVANS' CONTROLLABLE  
WAGON DUMP**

Perfectly safe, fully controllable, perfect, self-locking device.

Sole Agents:

**Waterous Engine Works Co.** WINNIPEG  
MAN.

## THE STUART-ARBUTHNOT MACHINERY CO., LIMITED

SUCCESSORS TO  
STUART & HARPER

.. 764-766 Main Street, Winnipeg

HEAVY MACHINERY MERCHANTS  
ELECTRICIANS

Sole Agents for:

"Leeward's" Engines and Boilers, "Brown" Automatic Engines, "Canton" Mining  
Pile and Boiler Feed Pumps, "Cameron" Steam Pumps, "Dodge" Wood Split  
Pulleys, "Beardmore's" Leather Belting, MacGregor, Gourlay & Co.'s Wood  
Working Machinery, Stratford Mill Building Co.'s system of complete Flour  
Mills.

LONDON Motors, Dynamos and Elevators.  
PACKARD'S LAMPS, Transformers and Supplies.



WAREHOUSE:

TORONTO AND MONTREAL

OFFICES: WINNIPEG, VANCOUVER, QUEBEC, HALIFAX

SHOWN THIS WEEK BY OUR

MONTREAL HOUSE AND REPRESENTATIVES

# Grain Bags

For Present or Fall Delivery  
At Special Quotations.

REPRESENTATIVES, MANITOBA, NORTHWEST TERRITORIES  
AND BRITISH COLUMBIA:

T. H. WARDELL, W. T. WALTERS, G. W. PARKER,  
ASHDOWN BLOCK, WINNIPEG

A. E. MCNAUGHTON  
VANCOUVER

**PATENTS** TRADE MARK  
DESIGNS  
PROCURED IN ALL COUNTRIES  
SPECIAL ATTENTION GIVEN TO PATENT  
LITIGATION  
PAMPHLET SENT FREE ON APPLICATION  
**RIDDOUT & MAYBEE,** 103 BAY STREET,  
TORONTO

## Wholesale

We supply all out of town merchants  
with a full line of

## Jewellery

at wholesale prices. Write for  
particulars.

**D. R. DINGWALL Ltd.**  
424 and 584 Main St., Winnipeg.  
Sign of the Street Clock.

## A. CARRUTHERS & CO.

Dealers and Exporters of  
**Hides, Wool, Sheepskins,**

**Tallow, Seneca Root  
and Raw Furs**

Liberal advances made on shipments  
against Bill Lading. Wood Saws, Hds  
Hoses and Taps furnished on applica-  
tion.

Office and Warehouse:  
120-122 King St., Winnipeg, Man.

## JAS. MCCREADY & CO. LIMITED.

WHOLESALE . . .

**Boot and Shoe  
Manufacturers**

MONTREAL, QUE.  
W. WILLIAMS, Agent.



# SORTING



Bear us in mind when your  
stock runs low and you want  
**LEATHER SHOES** for sort-  
ing. **VALUES RIGHT.** So  
are the Styles and Quality.

**BOSTON RUBBERS**

**ARTHUR CONGDON  
WINNIPEG**

**Grocery Trade Notes.**

Messina lemons advanced 35c per ton in United States markets last week.

Tomatoes increased in strength considerably last week in Toronto and in eastern wholesale centers, and improved demand coupled with more plentiful supply is responsible for the improvement.

Cable advices on ginger report a firm foreign market. It was stated that the good demand for ginger in foreign markets for forward shipment is about as high as 1 1/2-2c advance for 100 lbs. and 1 1/2-2c contract for Auction for March-May shipment.

According to cable advices received from Barbados since this day week says the Montreal Gazette, the market for molasses in its state still peculiar position as in a somewhat demand was active and the price was sold on the basis of 8c three cent than reapers could supply for some little time to come, but in the face of this fact cables also stated that the price this week would likely be about 1 1/2-2c higher than it was some time around the trade that it was raised and been received telling their price on local account, but we reported on local account, but we noted that some parties have been called to buy at to morrow's market on the basis of 7 1/2 to first cost.

**Hardware Trade Notes.**

Screen wire cloth gained 5c per roll last week in the east.

Refrined petroleum advanced 1/2c per gallon in the east last week.

The stove manufacturers of the Western States have advanced their prices a few cents. The reason of raw material is the reason.

The price of gasoline advanced 1/2c per gallon in the east last week. The production and sale of this commodity is in the hands of the state of California.

The iron market of the United States continues to gain strength. The material is advancing in price and the finished products show correspondingly reduced margins of profit, so that as prices remain stationary.

Wood stoves and wood ranges have been advanced a few cents by Canadian makers. The change went into effect on the 12th inst. and the concurrence of nearly all the manufacturers of this material have recently advanced, and the decision of the manufacturers to put up their prices was based on this. So change was made in coal stoves and ranges, but an advance is probable in this line.

Canadian importers expect to see the imports of British and foreign cement at this time forward as the competition of the United States products is becoming so keen that it cannot be met. No less than ten new factories have started operation in Ontario alone last year, and others are entering for the growing western trade. The fact that Canadian makers put their cement up to a stage which may be returned to the market at a later date.

An advance of 10 per cent. was announced last week by the Canadian manufacturers in locks, knobs (except porcelain, mineral and stone), and other hardware. The new discount is 40 per cent. Canadian porcelain, mineral and stone, which have been sold at different prices during the last few months, owing to United States, by the jobs, are now held, as a rule, by the jobbers at 50c per dozen in case lots.

**Dry Goods Trade Notes.**

Reports from all wholesale centers indicate great strength in the linen market, and prices are in some cases as much as 10 per cent. higher than they used to be.

There is a good demand for Canadian-made goods. The goods this spring and stocks in jobs are being rapidly depleted. Mills are present stocks were secured by jobbers. Fine goods for women's wear are almost impossible to obtain on short notice.

The cotton goods situation continues very firm, says the Toronto Globe. It was estimated a week ago in this column that a few lines might be further advanced. Four lines of plain colored flannelets were advanced the past week by 1/4c per yard. Ten or eleven other lines were not affected by the advance, and it is thought that the advance was caused by shortage in the stocks of the lines advanced.

**IMPLEMENT TRADE.**

**The Twine Market.**

Neither the twine nor fibre market has lost a particle of strength during the past week as far as can be determined. On the contrary signal hemp is firmer and wire is strong at the advance previously recorded.

There is fairly active, considering the time of year, for the wire and twine market. The impression is that a small portion of the twine being sold is far from correct. Some nearly equaling their capacity have orders in addition to those already in the market have begun to quote prices for soft fibre twine. Four manufacturers are now making soft fibre twine, the either jute or hemp, or both. The price of three ply genuine Kentucky twine is about 12c per cent, and ply, 10c, and combinations of jute and hemp about 9 cents. An offer of 8 cents was recently made by a dealer on what was claimed to be a large order of twine, but the sample proved to be bad at any price.

Hard fibre twine show no change, although the makers are offering to warrant higher quotations. Current prices are as follows:  
Standard ..... 11 1/2  
Manilla 500-foot ..... 12 1/2  
Manilla 1000-foot ..... 15 1/2  
Pure Manilla ..... 15 1/2  
1 1/2-twine 1000-foot cent less. Car lot 1/4 less. Fall terms.—Farm Implement-News, Chicago.

**Implement Trade Notes.**

Sisal fibre has advanced 3/4c per pound within the past three weeks, and the twine market is consequently firmer.

It is reported that the McCormick Harvesting machine Company, of Chicago, contemplates the erection of a factory in Toronto. It is understood that the object in establishing a branch in this city is not only to supply the trade of Canada, but to meet demands of the export trade at large.

The big manufacturers of binder twine appear to have dropped out of the market owing to the unsettled condition of prices, and the fact that they have already sold practically all the twine they had on hand. Prices are established on a basis of 1 1/2c advance, present prices being 11c per pound Chicago for sisal and standard.

J. E. Ruby, manager of the Winnipeg branch of the Frost & Wood Co., goes east to-day on a visit to headquarters at Smith's Falls, Ont. The Frost & Wood Co. are enlarging their factory and preparing to greatly extend their operations. One item on the programme in this connection is a meeting of the managers of several branches of the company, to discuss the situation and confer on plans for future operations. Mr. Ruby will attend this meeting while he is east.

The reports of threatened labor troubles on the Canadian Pacific Railway Company's system had the effect of depressing the market. Montreal and New York on Monday.

**Lumber Trade Notes.**

Owing to the scarcity of logs Vancouver mill men have in contemplation a 51 increase in the price of lumber.

It is estimated that in the neighborhood of 80,000,000 feet of logs will be boomed in the Rainy River this year.

The Hanbury Manufacturing Company, of Brandon, will erect a new saw and door factory in contemplation of new facilities in this line are inadequate.

The big drive of the Hanbury Manufacturing Co. of Brandon will reach the Assiniboine river this week. It is at present at the Assiniboine rapids on the Shell river.

Low water in the lakes and rivers of the upper part of the State of Minnesota is handicapping the lumber milling industry at Minneapolis and other prominent points. Mill men say they cannot get logs and are daily refusing orders on account of their inability to fill them.

**Boat and Shoe Trade Notes.**

Spring trade has been thoroughly satisfactory to jobbers and manufacturers and they have been so busy with this that they have not been finding time to get out their fall samples.

Eastern boot and shoe manufacturers are busy getting out samples of their fall lines, preparing to send out travelling orders. Some branch houses have already received their samples and say that when they show they are likely to be pleasing to the trade. There has been no attempt to make any radical departures in styles. The use of button soles will still be shown for street wear, with the rope stitching and broad toes in styles. The use of button soles so much in vogue in Europe on important features of the new samples are the improved workmanship and best materials being used.

**Live Stock Trade Notes.**

J. D. McGregor, of Brandon, is in the Calgary purchasing horses for the fourth Canadian contingent to South Africa.

A wire from Vancouver on April 20 said: "It is difficult to find space on the Alaska-bound steamers for the large amount of live stock being shipped en route to Dawson. These cattle are coming from the Canadian Northwest, and they are magnificent animals." Stock shipments from the western range country during last year showed a 40 per cent. increase over the total number shipped the previous year. 1,100, to March 31, 1902, according to the returns received from stock inspectors was 47,175, as against 47,515 shipped the previous year.

If the British government should release the embargo upon Argentine cattle and allow them to be slaughtered in British markets on the same basis as Canadian and United States cattle it will cut into the trade of the Harries. The Argentine cattle have been put on a list on account of foot and mouth disease, but as the country is now declared to be free of this trouble and is endeavoring to raise the embargo. Large herds of cattle have been accumulated during the year since they were shut out of the British markets.

A little more life has developed in the export trade of live stock during the past week, says the Montreal Gazette, as at last been seen in ocean freight space from this port for the coming season, which is now close at hand. The steamer "Roma" sailing for Liverpool, has been let for 100 head of cattle at 35c per head, and some of the lower than that. The Bristol firm, but the rate was not named. A cable has been received from the latter end of last week reported sales of the best American cattle at 15c, which was the highest in over twelve years, except for one lot of Christmas cattle that was sold last December at 16c per head. The tone of cable advices to-day is for the two leading markets was weaker, however, and noted a sharp decline of the price of American cattle, while those for Canadian were only slightly to be lower than a week ago.

The feature of the market was that it has been the decidedly strong feeling that has prevailed since this day week in choice export cattle, and prices have

steadily advanced, with sales of choice stock at 40c per 100 lbs, which is 20c to 50c per head higher than what was paid a week ago.

**Dairy Trade Notes.**

Butter gained 2c in price in Minneapolis last week.

The secretary of the Red Deer Butcher and Cheese Manufacturing Association, of that city, has given out the information that the shipment of butter made last summer, up to November 1st, amounted to 1,250,000 pounds, which realized for the party 12 1/2c per pound, over 2 1/2c had been deducted for expenses.

**FINANCIAL**

**WINNIPEG BANK CLEARINGS.**

Returns for the Winnipeg Clearing House for the week ending Thursday, shows as follows:

Week ending April 24, 1902 ..... \$1,324,750  
Corresponding week, 1901 ..... 1,281,880  
Corresponding week, 1900 ..... 1,569,775

**Financial Notes.**

The report of the Scottish, Ontario & Manitoba Land Company, Limited, for the year ended December last shows that the total farm land in Manitoba amounted to 12,749 acres, at a profit of 15,425, and of town lots the sales were 440. In addition to the above 2,112 acres in Manitoba over which the company held mortgages, were resold for 1,004, showing a profit of 4300 over the debt in the balance. The entire sales effected during the year amounted to a total of 418,841. The profit and loss account shows a balance of 16,286 at credit.

The sanguine statements that have been made in regard to the prospective gain at earning power of the Dominion Coal and Coke consolidation do not dispel the skepticism of the stockists with a great many people on the subject, in regard to its ability to earn large dividends. The stockists of the heavy fuel exchange are very attracted to a surplus to provide for the dividend of the common stock and the 84. The profit and loss account shows a balance of 16,286 at credit.

The net earnings in 1902 will be at least \$5,000,000, pay 5 per cent. on the common stock, and make due provision for the reserve, and it is doubtful of the company's ability to do so, though they believe that eventually it will prove a good money making proposition.—Montreal Gazette.

**Insurance Notes.**

The Royal Insurance Life Company, of England, will open in business in Canada since last week.

Last week at Albany the Mutual Reserve Fund Life Association, of New York, received its charter and will apply to invest its funds in its new title the Mutual Reserve Life Insurance Co.

The Dominion council of Royal Temples of Templars has been forwarded to its members in the total registrar department an important circular stating that the total fees in that department have been greatly increased, particularly to members advanced five years.

The Royal Temples have discovered, like many other assessment insurance companies, that their rates are altogether too low. The association has prepared a new scale of rates, and apply to all members at their present or attained ages. In advance applies to the total disability insurance, and to the life insurance of the order.

One-fifth of the total population of the United States is insured indirectly supported by railroads. The great interest in the United States here is the railroad interest, in which more than 50 per cent. is in any other one line. Equipment represents quite a proportion of the total.

# THE Edwardsburg Brands

## STARCH AND SYRUP

Are well known all over the Dominion as a

### STANDARD OF QUALITY

Assorted Stocks of all styles of packages now on hand with Winnipeg Wholesale Grocers. Order **CROWN BRAND SYRUP** in 2, 5, 10 and 20 lb. Tins.

## BABIES, BLACK AND WHITE, DEMAND



**E. NICHOLSON**

WHOLESALE AGENT  
115 Bannatyne St. East, Winnipeg

## Everything for Power

### WINNIPEG MACHINERY & SUPPLY CO.

Wholesale Dealers

The Laurie Engine Co.  
Montreal. Engines, etc.  
Olds Motor Works, Gasoline  
Engines for all purposes.  
The Hamilton Iron  
Tool Co., Ironworking  
Tools, Cows & Co., Wood-  
working Machinery; The  
Ohio Pump Co., Canton,  
Ohio, Ohio Steam Pumps  
for all purposes; Flour



Mills and Elevator Machinery  
and Supplies; Saw  
Mill Machinery; Chisholm,  
Boyd & White Co., Boyd's  
Patent Brickmaking Machinery;  
The United Electric  
Co., Toronto; Electrical  
Motors, Dynamoes and  
Supplies; Shafting, Pul-  
leys and all Accessories.  
WRITE US

Second Hand Machinery Bought, Sold or Exchanged.  
179 Notre Dame Ave. East, Winnipeg, Man.

## Excelsior Cement

Makes the strongest and most desirable walls and  
floors for buildings. Full descriptions.

Manitoba No. 1 Hard Wall Plaster—  
Up-to-date Plaster for finishing walls. Made in Mani-  
toba by

**THE MANITOBA UNION MINING CO. Ltd.**

Office—214 Brien Exchange, Winnipeg



## Poultry

Highest price paid for all kinds  
of live Poultry.  
All varieties of fresh and salt  
fish constantly on hand.

**W. J. GUEST** Wholesale Fish, Game,  
Poultry, Etc.  
602 Main St., Winnipeg.

ESTABLISHED 1874 60 YEARS' EXPERIENCE

## CARRUTHERS, BROCK, JOHNSTON & DAY

RENT COLLECTIONS  
A  
SPECIALTY

Insurance,  
Financial,  
Real Estate  
Agents

ESTATES MANAGED  
MONEY INVESTED

J. & J. TAYLOR SAFES AND VAULT  
DOORS.

481 MAIN STREET - WINNIPEG

THE **W. E. SANFORD**  
**MF'G CO., LTD.**  
HAMILTON, ONT.

Wholesale  
**Clothing Manufacturers**

Offices and sample rooms in the San-  
ford block, Winnipeg, corner of Porteous  
and Bannatyne streets, where a com-  
plete set of samples can always be seen.  
Western representatives—H. Kite, W.  
Dunlop, Geo. Shaw, A. McAllister

## FRANK LIGHTCAP

DEALER IN

**HIDES** PELTS, WOOL  
SENEGAL Etc.,  
EXPORTER OF  
**NORTHERN FURS**

Highest prices paid for consignments  
and returns made promptly.

Write for circulars containing market  
reports and full quotations.

172-174 KING ST., WINNIPEG.  
P. O. Box 484.

## Repeat Orders To Hand

TENNIS BALLS  
RUBBER BALLS  
GARDEN SETS  
MARBLES  
CANES AND PIPES

Letter Orders Receive Prompt Attention

**J. L. MEIKLE & CO.**  
PORT ARTHUR, ONT.

## CLARE BROS. & CO.

Stoves and  
Furnaces

## Metal Roofing and Siding

Steel Embossed Ceiling  
Eave-trough and Conductor Pipe  
Graniteware and Tinware

## CLARE & BROCKEST

Managers.

WESTERN BRANCH, WINNIPEG, MAN.



# Changed Shape

We have changed the shape of our 18 K Cigar; we also guarantee it all filled with pure Havana. It is the best 10 cent cigar in the market to-day. Our price is the same; it gives you a good profit and your customer a good smoke. Send for sample box with your other orders.

**THE MACPHERSON FRUIT CO. LIMITED.**  
491 Main St., Winnipeg

**Genuine Wabash Screen Doors  
Reliable Refrigerators  
Lightning Ice Cream Freezers**

Write for prices.

**MARSHALL-WELLS CO.**  
WHOLESALE HARDWARE,  
WINNIPEG.

# DRUGS

We now have a fresh stock of heavy drugs, such as EP-SOM SALTS, SULPHUR, Salt-petre, and Borax, not excelled in point of purity. Low prices for quantity.

Write for quotations.

**The Martin, Bole & Wynne Co.**  
Wholesale Druggists.  
P. O. Drawer 1461. WINNIPEG.

# S. Greenshields, Son & Co.

Wholesale . . . MONTREAL  
**DRY GOODS  
MEN'S FURNISHINGS  
CARPETS, ETC.**

Wholesale Sample Rooms  
**412-414 McIntyre Block**  
Represented by—R. B. GALLAGHER, G. M. NEWTON, A. C. RUSSELL.

# THE WESTERN PACKING COMPANY

Our new abattoir on Alexander Avenue is now completed and running, and we are ready to supply the Trade both in the city and country with fresh killed meat of finest quality. Mail orders given prompt attention.

We are also open to buy live or dressed hogs and all kinds of produce paying highest cash price for same.

Abattoir and Offices  
**ALEXANDER AVENUE, - WINNIPEG**

# Hicks Bros. & Co.

**TEA IMPORTERS**

And wholesale dealers in

**Fancy Groceries, Butter, Eggs, Cheese**

Packers of Britannia, Beaver and Buffalo Brands of Packet Tea, and are Agents for those Light's Package Tea for Manitoba, N. W. Territories and British Columbia.

277 Rupert Street,  
274 Pacific Avenue, Winnipeg

Factory,  
WINNIPEG, MAN. YARMOUTH, N. S.

# The Redding Shoe Mfg. Co.

**Wholesale Boots and Shoes**

We wish to draw the attention of the Shoe Trade to the fact, that the sale of shoes depends on the quality of the shoe, and having an article that you can **Guarantee** and recommend in every respect.

We manufacture the **Highest grade of Staple Lines** at lowest prices, and **Guarantee** every pair of shoes we send out to be **Solid Leather**.

Travellers are now out showing Samples for Fall, and we would like you to look carefully over our lines before buying.

A large and well assorted stock always on hand, where you can do your sorting at a day's notice.

A trial solicited.

WAREHOUSES:  
**137 BANNATYNE AVE., WINNIPEG**

P. O. Box 753. Telephone 190

# Boots and Shoes, Trunks and Valises

We carry the largest stock West of Montreal and can fill your letter orders promptly. Send us your Sortings. Our stock is now complete in every line and prices right.

Do you handle Maple Leaf Rubbers

**THE KILGOUR-RIMER CO. Ltd. WHOLESALE**  
57 Princess Street, Winnipeg

# RAT PORTAGE LUMBER COMPANY

LIMITED

MANUFACTURERS OF . . .

**LUMBER,  
LATH, SHINGLES,  
SASH,  
DOORS**

AND ALL KINDS OF WOODWORK

Head Office and Mills at RAT PORTAGE, ONT.

Branch: Point Douglas Avenue, WINNIPEG

P. D. ROE, President. R. ABERNETHY, Vice-President. T. F. PATERSON, Sec. Treas.

# The Canadian Pacific Lumber Company Limited

PORT MOODY, B. C.



Manufacturers of and Wholesale Dealers in all Classes of British Columbia

**LUMBER, LATH,  
SHINGLES,  
MOULDINGS, Etc.**

Manager.

CAPACITY: LUMBER—60,000 feet per Day; LATH—20,000; SHINGLES—120,000.

We have the largest dry kiln capacity of any mill in B.C.; also the largest amount of sheds, and these are well stocked with Manitoba lumber. We have seven planers and are prepared to ship promptly. We understand the requirements of Manitoba dealers. Send to us for your next car. HENRY BYRNES, Selling Agent, Winnipeg.



**MANITOBA.**

Manitoba is to have a business college.

The P. R. Co. will expend \$50,000 enlarging the railway shops at Winnipeg.

Bell & Pringle have opened business in Winnipeg as manufacturers' agents.

J. Colmore, of Exeter, Ont., has opened up a blacksmith shop at Crystal City.

James Gathers, Dauphin, is shipping as possible sawmill to Rainy River lumber during the summer.

Donald McMillan and Jas. Thoms are engaged in the implement business at Darlington.

Nielsens & Co., dry goods merchants, have started in business on Main street, Winnipeg.

Franklin, Man., is to have a farmer elevator this summer. The capacity will be 20,000 bushels.

Steele & Co., photographers, Winnipeg, are seeking incorporation. The capital stock is \$80,000.

Butter is so scarce at Dauphin that merchants have been obliged to bring supplies from outside points.

A. H. Halstead, recently manager of the Bank of Montreal at Portage la Paire, will open up a private bank at that place.

The hauls of the Selkirk fish wharves are busy preparing for the present season.

The Brandon Hardware Company, Limited, is being incorporated to take over the business of The Jas. Robertson Co., Ltd.

A steam river, Man., firm was fitted out on the charge of having bought saw mills, in contravention to the regulations of the province.

E. F. Hatchings expects to commence boring for petroleum oil in his property at Hird's Hill, east of Dauphin, this week.

J. H. Ashdown's new warehouse on Brandon street east, Winnipeg, will be four stories high, instead of two stories as at first intended.

Representatives of one of the big Minnesota lined oil companies have been in Winnipeg this week looking after prospects for establishing a mill here.

H. Munro, who has been conducting a saw mill at Portage la Paire, has sold his effects by auction and leaves shortly for Alberta to engage in ranching.

Fire broke out on Monday in the labour block on Horie street, Winnipeg, and slightly damaged the biscuit and candy stock of Thoms & Rossor, commission merchants.

R. E. Trumbell, wholesale liquor merchant, with stores at Moonbeam and Vidon, is applying for a license in Brandon, and if given it will concentrate his business there.

The Winnipeg lined oil mills closed on Saturday last after a run of about six months, and will not be reopened until the next crop of flax seed is marketed.

The hack and carriage business subjected for the past eighteen years to the ravages of the war, by W. Jordan, has been purchased by Fred. Post. The business will be conducted on the same premises.

J. J. Philip, Dominion fruit inspection manager, has started on a two months tour of Manitoba and the territories to advertise the terms of the Fruit Inspection Act in anticipation of a coming season.

W. J. Guest, fish and game merchant, Winnipeg, is offering the frame building which he owns at 508 Main street, and is going to erect a new building on the property in which to carry on his business.

A three pleasure boat is being built at Winnipeg, and is to start on the river this summer. It is 100 feet in length, and will be fitted up for excursion parties, and will be the city's first river points, will accommodate 500 people.

The furniture business of R. P. Campbell & Co., Portage la Prairie, has been sold to Hey & Sons, of Dauphin, Ont. Mr. Campbell is one of the old timers of Portage, and has been in business there for nearly thirty years.

The bricklayers and masons of Winnipeg have been demanding an

increase in pay from 50 to 55 per hour.

As the contractors were not willing to concede the request, it has been submitted to arbitration, and M. Burt has been selected as arbitrator.

E. B. Nixon, who has for a number of years held the important post of grocery buyer for the Hudson's Bay company, has been appointed to the post by F. W. Sprado, also a well-known Winnipegger, and together they will operate the grocery business on their own account.

Brandon is to have its share of building activity this year. Many new buildings are being started, and the most important so far is a \$240,000 block for 22nd Bros. This building will be located on Rossor avenue, and will contain three stories and basement. Part of it will be rented for offices, etc., and the balance occupied by the owners. Burchell & Howay will also build a business block, also J. F. Hugginbush, jeweller.

Merrick, Anderson & Co., manufacturers' agents, Winnipeg, announce by circular that they have again taken the business of the Rossor range, and Milne's Imperial Standard scales and will hereafter carry a stock of these scales in Winnipeg. In connection with this agency they have established in their Winnipeg warehouse a scale repairing department, and have secured an expert from the factory of Burrows, Milne & Milne and will henceforth be prepared to do all kinds of scale repairing.

**ASSINIBOIA.**

The Medicine Hat News says: "The prairie fire which started along the railway between Irvine and Brandon last Tuesday has proved the worst fire ever visited this district. Thousands of acres of prairie range have been burned over. High winds made it impossible to stop the fire. P. McLaughlin and fifteen men fought with it at the start into Ross creek at Demarey's ranch. Practically the whole of the country north of the C. P. R. is burned. A number of ranchers' lost hay stacks, and C. Strong, of Walsh, lost his cow. The District Commissioner last week a fire has burned over the range on the north side of the river to the Red River. These fires are very serious affairs for this district. N. W. M. P. turned out every day and did what they could to combat the fire."

**ALBERTA.**

A steam boiler and machinery built for the Obacic Fathers, of Peace river, are now on the way to their destination. The shipment consists of one propulsion 9512 in "knock-down" with two boilers and machinery complete; a launch set up complete, 27 ft. by 6 ft., and machinery for a launch, which the hull is already constructed at Fort Chipewyan. The weight is 25,000 pounds.

**N. W. ONTARIO.**

The town of Irt Portage is taking over the local electric lighting plant, with the intention of making it a municipal enterprise. Arbitrators have been at work placing a value upon the plant, and their award is that the town should pay \$38,129 for the plant, which should be paid for the property.

The C. P. R. steamer Manitoba arrived at Portage la Paire on Tuesday on Monday and left for Owen Sound with a complete miscellaneous cargo. The first passenger steamer out of Fort William this year, the Manitoba brought in 500 tons of freight as her first cargo.

A wire from Port Arthur on Tuesday said: "The shipping season at this port was practically opened on Sunday with the arrival of the Northwest Company's steamer Monarch, carrying a cargo of 3,100 tons of merchandise and twenty-five passengers. The Monarch has on board 500 tons of through freight for the west, which, besides the first straight shipment of freight made from Port Arthur for many years, was also the first made over the new Canadian Northern Railway for ports in Manitoba and the Territories.

Hamilton, Ontario, has a city improvement society, the object of which is to secure the beautifying of the city by the planting of trees, shrubs, berry, etc. In the officers, who is at the head of the Dominion exposition com-

**Notes.**

al farms, spoke recently in Hamilton, under the auspices of this society, on the question of tree planting in cities. Mr. Saunders spoke in length to a large audience, describing the best kinds of trees to plant and how to plant them. He also spoke of ornamental shrubs and flowers for city lawns and gardens.

The market for grain freights is only very quiet, and says the Montreal Trade Bulletin. Some of our steamship lines say they have been pretty well booked for May, but some of the same lines offered to take a good jag of heavy grain for Liverpool at 18 3/4, and another asked is 18 for five loads to London. Glasgow freights are very quiet, and quoted at 1s 12 1/2; Manchester is quoted at 1s 6d; Avonmouth, 2s to 2s 3d; Leith, 2s to 2s 3d; Antwerp, 1s 6d to 1s 9d, and Rotterdam, is 1d to 1s 9d. In four there has been further business for May shipment from this port at 8 1/2 per 100 lbs. to Liverpool and Glasgow, and at 10 per ton to London.

**STEAM LAUNDRY.**

Good opening for a man with \$1000 capital. Address Box 431, Portage la Prairie, Man.

**FARM FOR RENT.**

In Winnipeg District. Apply at the Commercial office.

**RARE CHANCE.**

General store business and stock for sale in one of the best towns in Manitoba. Or would sell the hardware department separately. Would sell or rent building. Address Bargain, care The Commercial.

**FOR SALE CHEAP.**

The Ponoka Butcher Shop, doing a cash business. Enquire of F. C. Case, Ponoka, Alberta.

**FOR SALE.**

Butcher's Refrigerator, Sausage Machine, Block, Scales, Hooks, Tools, etc. Apply to Frank Russell, Box 203, Brandon.

**A CATTLE PROPOSITION.**

Every head of breeding stock bought now will increase several in a few years' time. I will give you the exact amount of abate-stock from \$5.00 per head up and will keep them for four years for share of the increase. Write "Dairy-Rancher," care The Commercial.

**FOR SALE.**

The undernamed offers for sale his stock of general merchandise at Boncherville, Ont. This stock, amounting to \$20,000, is in first-class shape and the turnover last year was about \$20,000. Selling in connection with stock, and the premises will be sold or leased at option of purchaser. This is a splendid opportunity for a man with small capital. Payments (if required) in monthly instalments. For further particulars apply to E. J. Boucher, Boncherville, P. O., Ont.

**SITUATION WANTED.**

SITUATION WANTED as salesman in general store. Two years' experience in dry goods, six years in groceries; specialities references furnished. B. Shepard, Dauphin, Man.

**Employment**  
is now the question for many men. You can make money selling our complete assortment of fruit and ornamental stock for fall or spring delivery. Write for terms. Address—The Jewell Nursery Co., Lake City, Minn. (Established 1868. One thousand acres.)

**FOR SALE CHEAP.**

A J. & J. Taylor safe, 2x17 inside, with steel vault; also a Dayton computing scale. Inquire of J. E. Rogers, Apply to C. E. Gutteridge, Deloraine, Man.

**BUSINESS CHANGE.**

In the centre of the irrigated district of Alberta, Toronto will be received up to the last day of May, 1902, for the whole of the following season.

General Dry Goods of the approximate value of \$20,000.

Boots and Shoes of the approximate value of \$3,000.

The above is the stock in trade of the only exclusive dry goods business in the flourishing town of Lethbridge, population 2,500.

Mining, ranching and agricultural centre.

Particulars may be had upon written or personal application to the undersigned.

G. H. JOHNSTON,  
Lethbridge, Alberta.

**NOTICE OF DISSOLUTION.**

Notice is hereby given that the partnership heretofore subsisting between the undersigned, as hardware merchants in the village of Carberry, trading as Murphy, Brown & Co., has been this day dissolved by mutual consent. All claims owing to the partnership are to be paid in full to the partnership, who are continuing said business at Carberry, forward ship agents, to be received by the said Murphy & Brown & Armstrong, by whom the same will be settled.

Dated at Carberry this first day of February, A.D. 1902.

G. W. MURPHY,  
H. W. BROWN,  
J. J. ARMSTRONG,  
Witness: (Signed) ROBT. A. GARLAND.

**MAIL CONTRACTS.**

Separate sealed tenders, addressed to the Postmaster General, will be received at Ottawa until noon, on Friday, the 30th of July, for the conveyance of His Majesty's mails, on a proposed contract for four years, over each of the following routes:

- (1) Winnipeg post office and sub-offices, 2 times per week.
  - (2) Winnipeg post office and street letter boxes, 2 times a week to the creek.
  - (3) Winnipeg post office and Canadian Pacific and Canadian Northern Railway stations, 12 times a week, or more or less frequently, as may be required.
  - (4) Between the mail trains arriving at and departing from the C. P. R. Station the said station an office may be required from the 1st July next.
- Tenders will also be received at the same time for the above services, on a proposed combined contract for four years, from the 1st of July next.
- Printed notices containing further information as to conditions of proposed contract may be seen and blank forms of tender may be obtained at the post office and sub-offices in Winnipeg, and at the office of the post office inspector.

W. W. McLEOD,  
Post Office Inspector.  
Post Office Inspector, Ottawa,  
Winnipeg, 18th April, 1902.

**WANTED—SEVERAL PERSONS** of good character and good reputation in each district (and in this country required) to represent and advertise the following established healthily business house of solid financial standing. Salary \$1000 per annum. Expenses additional, all payable in cash each Wednesday direct from the office. Horse and carriage furnished, when necessary. References enclosed self-addressed stamped envelope. Manager, 212 Caxton Building, Chicago.

**UNION TRADE MARK BRAND**

**OVERALLS AND PANTS**

**SHIRTS AND SMOCKS**

Our traveller is leaving on his regular Spring trip and will shortly call on you. Kindly save him your overall orders.

**The Hoover Mfg. Co. Ltd.**  
Hawker, Cor. King and William (opposite Leland Hotel), Winnipeg.





sh. 30c per dozen bunches; parsley, 10c; cress, 20c; celeriac, 10c per dozen bunches; green onions, 25c; dried onion, 14c per pound.

**POSSIBLE CIGARS**—Fresh killed pigs are not over 14c per pound in the market is firmer. We quote: Beef, city dressed, per pound, 8 to 8 1/2c; pig, city dressed, per pound, 7 to 7 1/2c; pig lards, each, \$3.50 to \$4.50, head per pound, 7 1/2c.

**HIDES**—The market is very quiet, and most hides coming in are of poor quality. The average price for dressed hides is not over 14c. The prices of city hides are better, 14c. No. 2, 5c; and No. 3, 4 1/2c. Kips and skins of the same grade are selling at 25 to 40c; stanks, 10 to 15c; horse hides, 10 to 15c.

**WOOL**—The market is expected to open shortly for Manitoba wool. Although there have been inquiries for prices, some in the trade think that the opening price will be about 7c per pound for unwashed fleece. They say the state of the wool market today will not justify any more than that being paid.

**TALLOW**—Local buyers are paying 12 1/2 to 15c per pound for tallow delivered here, according to grade.

**SINCE**—The cool weather and frosty nights have not been favorable to the success of the business, and no digging has been done as yet, but what has of a good many inquiries for pigs. It is believed that the opening price will be as dealers do not care to name a price yet.

#### LIVE STOCK.

**CATTLE**—Receipts have been more plentiful during the past week to fill out requirements of the market for beef animals raised off about 1 1/2 months since. It is still the opinion of those informed in the trade, that cattle are scarce and fully worth the prices which have been paid for them lately, namely, 4 1/2c per pound for butchers' grade, off cars, here, although this week some nice cattle sold for 4 1/2c. Buyers are still offering \$1.75 to \$1.90 per head for yearling stockers. There are \$20 to \$25 per yearling, but the available animals have been all bought and shipping is now in progress.

**SHEEP**—Market nominal. **HOSE**—Live hogs are in very tight supply and have advanced 1 1/2c to 1 1/4c per pound for best weights of cars here.

**MILK**—COWS' MILK are very scarce, and good cows really bring \$5 each in this market. As most of the offerings are poor stock, they bring less money, the range being from \$2 1/2 to \$3 1/2 each.

**HORSES**—There is a good steady demand for horses for both farm and general use, and dealers find no difficulty in disposing of all they can secure. The market is being largely supplied from Ontario. There are some Montana horses selling. Prices continue high.

#### New Branch House.

J. O. Thorn, manager of the Metallic Roofing Co., of Toronto, has been engaged for the opening of this new business here. The Metallic Roofing Co. has had an office here for some years and has done a large trade in the west in the goods manufactured by the company. It is now the intention to establish a regular branch here and carry a large stock on the spot for the western trade. Mr. Thorn has organized his staff here and opened an office in the Tribune block, on McIntosh street. This will provide temporary quarters until the new warehouse, which will be erected at once is completed. Several sites for the warehouse are now under consideration. Temporary warehouse accommodation has been secured for the stock, which is now on the way from the factory. R. E. Nicholson, who has been with The Black, white, farmers' agent, Winnipeg, for some time, will be manager of the new branch here of the Metallic Roofing Co. Mr. Thorn will be in the city for some days. He is accompanied on this trip by G. A. Gordon, general sales manager. Mr. Gordon will make a motor trip throughout the west and acquaint himself with the requirements of the trade situation here before returning east.

The Welland canal opened on Monday morning, with fourteen boats waiting to lock through. The first boat to lock up was the Canadian steamer Erin.

#### Seneca.

A dealer who is well posted in general situation and outlook, I would say there is no stock to amount to anything in either the Twin Cities or the Winnipeg markets. It is estimated that there will be only a ton in the former and a ton and a half in the latter of the old root. The smallness of the stocks can be better explained from the fact that during the past few years, the Seneca, 1000 pounds are frequently sold in a single day. New York is supposed to have a large stock, but the Seneca in Europe. Consumers are using up their purchases to a low point. Some of the Seneca, who are buying waiting for the new crop. The market is firm, but not much is being sold. When a manufacturer has to buy supplies he buys what he requires. The selling prices are 50c, in this market, or 52 1/2 to 54c in New York for prime root. It is expected that not sufficient quantity of root will be received to fill orders before the last of July. Old root shrinks in carrying over a dealer to a great extent, so there is a difference in value between new and old root. It is pretty well known that a good deal of new root will start at. It will take a good while to replenish stocks all over the country, and it will be a long time before the Minnesota and Dakota crop grows out. Every bushel of root that is once plowed over it destroys the plant. This is also being plowed up in Manitoba. Hay to look to Manitoba more and more every year for supplies. One hundred thousand pounds can be disposed of in a single instant. Consumers diggers should secure supplies as early as possible so as to take advantage of the demand. Care should be taken that the root is washed clean and is thoroughly dry.

#### Manitoba Wheat Stocks.

There were 3,019,062 bushels of wheat in store at Port William and Port Arthur on April 21. At Port Arthur on April 21, A. G. Gordon has bought out the lumber business of the Northern Lumber Company at Gilbert Plains, Manitoba, and will continue it in his own name. G. B. Murphy has retired from the firm of Murphy, Brown & Co., hardware merchants, Carberry, and the business will hereafter be conducted by Brown & Armstrong. E. A. Gemmel and Frank Kochen have formed a partnership to carry on

#### GRAIN STOCKS AT LAKE PORTS.

##### Port William.

Stocks of grain in store at Port William on Monday, the 21st inst., were as follows:

Wheat—1 hard, 296,143 bushels; No. 1 northern, 1,454,046 bushels; No. 2 northern, 1,277,157 bushels; No. 3 northern, 51,702 bushels; other grades, 50,754 bushels, making the total of wheat 3,129,114 bushels.

Oats—No. 2, 80,491 bushels. Receipts of wheat at Port William during the week ending April 21 amounted to 282,692 bushels, and shipments to 2,086,804 bushels. Receipts were 25,073, and shipments nil.

##### Port Arthur.

Stocks in store at King's elevator, Port Arthur, on Monday, the 21st inst., were as follows:

Wheat—No. 1 hard, 4,140 bushels; No. 1 northern, 94,880 bushels; No. 2 northern, 39,707 bushels; No. 3 northern, 2,055 bushels; other grades, 161,434 bushels; total, 216,824 bushels.

Oats—No. 1 white, 10,488 bushels; mixed, 14,733 bushels; total, 25,223 bushels.

Receipts of wheat at this elevator during the week were 53,057 bushels, and shipments 59,585.

Stocks of grain in store at the Canadian Northern elevator at Port Arthur on the 21st, are as follows:

Wheat—No. 1 hard, 50,425 bushels; No. 1 northern, 125,007 bushels; No. 2 northern, 287,716 bushels; No. 3 northern, 10,800 bushels; No. 4, 1,283 bushels; making a total of 573,025 bushels.

Oats—Feed, 3,392 bushels; mixed, 1,188 bushels; making a total of 4,580 bushels.

Receipts for the week were 122,377 bushels of wheat, and shipments were 2,062 bushels of wheat.

#### Late Western Business Items.

Moira is to be incorporated as a village.

A. E. Jones is opening a hardware store at Milstone.

W. C. Inglis, hardware merchant, of Gilbert Plains, is adding furniture.

The Union Bank will spend \$5,000 on a new building at Hamiota, Man.

T. L. Arnett has bought the lumber and coal business of A. J. Hughes at Souris.

D. and J. H. Johnson have entered into partnership at Grand View on the machine business.

W. Lorimer and H. Brown have purchased the general business of Geo. Elliott, at Cranhill.

A. R. Hutchison, formerly of Carman, Man., will open a jewelry store at Indian Head, Assn.

Levi Beck has bought the butcher business of E. E. Pettit, at Yorkton. Mr. Pettit is going into the machine business.

Geo. Whaley and W. J. Rawson have formed a partnership at Grand View, and will engage in the iron business.

The 1902 session of the Northwest Assembly at Regina was pronounced shortly after 11 o'clock on Saturday last, without functions.

The school board of Prince Albert, Sask., is advertising for tenders for the erection of an addition to the school building in that town.

Marshall & Huntz will erect a brick and stone block at Medicine Hat this summer. One of the floors will be fitted up as an opera house.

G. B. Gordon has bought out the lumber business of the Northern Lumber Company at Gilbert Plains, Manitoba, and will continue it in his own name.

G. B. Murphy has retired from the firm of Murphy, Brown & Co., hardware merchants, Carberry, and the business will hereafter be conducted by Brown & Armstrong.

E. A. Gemmel and Frank Kochen have formed a partnership to carry on

a general real estate and insurance business at West Selkirk, under the firm name of Gemmel & Kochen.

P. Heddenhott, baker, Hamiota, Man., will erect a new building this year in which to carry on his business.

G. Stevenson, jeweller, Manitowish, Man., will establish branches at Killarney and Boissevain, Man.

M. C. Cassidy, senior member of the firm of Cassidy & Son, general merchant, Dryden, Ontario, died at his residence in that town on Friday morning last. Deceased has been actively engaged in business in Dryden since 1807.

The annual meeting of the Bintauna Assn. board of trade was held on Saturday evening last. The new officers elected were: President, W. H. Godkin, first vice-president, Geo. Hill, second vice-president, G. G. Barber, secretary, D. P. Kennedy, treasurer, Albert Stauffer.

The stock of Lilly & Carter, general merchants, Dauphin, was sold by auction at a rate on the dollar last week. The purchaser was the senior partner of the firm, Mr. Lilly, and the price paid 65c on the dollar. The real estate also went to the same purchaser, and he now announces that he will continue the business.

The Western Sheep Growers' Association met in annual convention in Muckle Creek on the 11th inst. The officers reported a satisfactory year's work performed, and the industry was reported to be on a sound basis.

Marshall & Huntz will erect a brick and stone block at Medicine Hat this summer. One of the floors will be fitted up as an opera house.

G. B. Gordon has bought out the lumber business of the Northern Lumber Company at Gilbert Plains, Manitoba, and will continue it in his own name.

G. B. Murphy has retired from the firm of Murphy, Brown & Co., hardware merchants, Carberry, and the business will hereafter be conducted by Brown & Armstrong.

E. A. Gemmel and Frank Kochen have formed a partnership to carry on

a general real estate and insurance business at West Selkirk, under the firm name of Gemmel & Kochen.

P. Heddenhott, baker, Hamiota, Man., will erect a new building this year in which to carry on his business.

G. Stevenson, jeweller, Manitowish, Man., will establish branches at Killarney and Boissevain, Man.

M. C. Cassidy, senior member of the firm of Cassidy & Son, general merchant, Dryden, Ontario, died at his residence in that town on Friday morning last. Deceased has been actively engaged in business in Dryden since 1807.

The annual meeting of the Bintauna Assn. board of trade was held on Saturday evening last. The new officers elected were: President, W. H. Godkin, first vice-president, Geo. Hill, second vice-president, G. G. Barber, secretary, D. P. Kennedy, treasurer, Albert Stauffer.

The stock of Lilly & Carter, general merchants, Dauphin, was sold by auction at a rate on the dollar last week. The purchaser was the senior partner of the firm, Mr. Lilly, and the price paid 65c on the dollar. The real estate also went to the same purchaser, and he now announces that he will continue the business.

The Western Sheep Growers' Association met in annual convention in Muckle Creek on the 11th inst. The officers reported a satisfactory year's work performed, and the industry was reported to be on a sound basis.

Marshall & Huntz will erect a brick and stone block at Medicine Hat this summer. One of the floors will be fitted up as an opera house.

G. B. Gordon has bought out the lumber business of the Northern Lumber Company at Gilbert Plains, Manitoba, and will continue it in his own name.

G. B. Murphy has retired from the firm of Murphy, Brown & Co., hardware merchants, Carberry, and the business will hereafter be conducted by Brown & Armstrong.

E. A. Gemmel and Frank Kochen have formed a partnership to carry on

a general real estate and insurance business at West Selkirk, under the firm name of Gemmel & Kochen.

P. Heddenhott, baker, Hamiota, Man., will erect a new building this year in which to carry on his business.

G. Stevenson, jeweller, Manitowish, Man., will establish branches at Killarney and Boissevain, Man.

M. C. Cassidy, senior member of the firm of Cassidy & Son, general merchant, Dryden, Ontario, died at his residence in that town on Friday morning last. Deceased has been actively engaged in business in Dryden since 1807.

The annual meeting of the Bintauna Assn. board of trade was held on Saturday evening last. The new officers elected were: President, W. H. Godkin, first vice-president, Geo. Hill, second vice-president, G. G. Barber, secretary, D. P. Kennedy, treasurer, Albert Stauffer.

The stock of Lilly & Carter, general merchants, Dauphin, was sold by auction at a rate on the dollar last week. The purchaser was the senior partner of the firm, Mr. Lilly, and the price paid 65c on the dollar. The real estate also went to the same purchaser, and he now announces that he will continue the business.

The Western Sheep Growers' Association met in annual convention in Muckle Creek on the 11th inst. The officers reported a satisfactory year's work performed, and the industry was reported to be on a sound basis.

Marshall & Huntz will erect a brick and stone block at Medicine Hat this summer. One of the floors will be fitted up as an opera house.

G. B. Gordon has bought out the lumber business of the Northern Lumber Company at Gilbert Plains, Manitoba, and will continue it in his own name.

G. B. Murphy has retired from the firm of Murphy, Brown & Co., hardware merchants, Carberry, and the business will hereafter be conducted by Brown & Armstrong.

E. A. Gemmel and Frank Kochen have formed a partnership to carry on

a general real estate and insurance business at West Selkirk, under the firm name of Gemmel & Kochen.

P. Heddenhott, baker, Hamiota, Man., will erect a new building this year in which to carry on his business.

G. Stevenson, jeweller, Manitowish, Man., will establish branches at Killarney and Boissevain, Man.

M. C. Cassidy, senior member of the firm of Cassidy & Son, general merchant, Dryden, Ontario, died at his residence in that town on Friday morning last. Deceased has been actively engaged in business in Dryden since 1807.

# Sheet Metal Building Materials

On and after May 1st, we shall have a large stock in Winnipeg, together with our own warehouse and office staff.

Kindly let us know your wants. Prompt and careful attention will be given to every detail.

## THE METALLIC ROOFING CO.

LIMITED

Wholesale Manufacturers, Toronto.

ADDRESS—P. O. BOX 542, WINNIPEG.

### Toronto Wholesale Trade.

Special to The Commercial.

**Dry Goods**—Trade is better, owing to warmer weather. Cottons are very firm, and one mill has issued a revised list showing slight advances. One line of ducks has been advanced for the third time. A general advance in cottons is considered likely.

**Hardware**—Trade is fair. Harvest tools have advanced 10 per cent. again. Green goods are in 75-cent range. Binder twine is 1/2¢ higher all around. White hickory and ash handles have advanced. Discount on second growth is now 25 per cent., and on other grades 35 per cent. The discount on hickory is 10 per cent. first and second, is 50 per cent., and on others 35 per cent. Washing machines have advanced. Metal is very firm. Hog tin is weak. Copper is easy. Pipe tubes are 5 per cent. higher in the States. Cabinet locks have advanced in the States. White lead is weaker owing to price cutting. An advance in glass in the near future is not unlikely.

**Groceries**—Trade is fairly good. The feature of the week is an advance of 10 cents on all Canadian refined sugars today. Canned meats are strong and likely to advance. Canned and pickles are steady. Peas, 80¢; tomatoes, 92½¢ to 95¢, corn, 70¢.

### Hogs and Hog Products.

Special to The Commercial.

**Hog products**—The live demand. Dressed hogs advanced 50¢ here yesterday.

**Hogs**—Dressed, \$8.75 to \$9.00 per 100 lbs for farmers' loads.

**Pork**—Canada short cut, \$21.50 to \$22.00; heavy mess, \$21.00.

**Smoked and Dry Salted Meats**—Long clear, tons and cases, 10¢; breakfast bacon, 18¢; hams, 13 to 13½¢; rolls, 11¢; shoulders, 10½¢; suets, 14 to 15¢; green meats out of pickle are quoted at less than 10¢.

**Lard**—Three, 11½¢; tubs, 11½¢, and lard, 11½¢.

### Toronto Grain and Produce.

Special to The Commercial.

**Offerings of winter wheat are larger and the demand from millers fair. Oats are firm. Butter, choice dairies, are still scarce. Eggs are wanted at firm prices. Creameries are steady. Eggs are firm. Potatoes are dealer owing to keen demand for shipment to western states.**

**Wheat**—Red and white winter wheat is worth 74¢; middle freights, spring, 72½ to 73¢; No. 2 east, Manitoba wheat is worth 88½¢ for 1 hard, 85¢ for No. 1 northern, lake and rail, grinding in transit; and 82½¢ for No. 2 northern.

**Oats**—No. 2 white, 41½¢ per bushel, middle freights.

**Barley**—No. 1 is quoted at 53¢ per bushel, middle freights.

**Flour**—90 per cent. Ontario patents, \$2.77½ to \$2.80 in buyers' bags, middle freights. Choice brands are held 15 to 20¢ higher. Manitoba flour is unchanged at \$3.80 for Hungarian grain in carlots, bags included, on track, Toronto.

**Milled**—Shorts, \$18.50 to \$19.50 per ton; and bran, \$15.00 per ton, middle freights, Manitoba feed, \$22 for cars of shorts and \$19 for bran, sacks included.

**Oatmeal**—\$1.50 for cars of bags and \$1.65 in wood for carlots, Toronto.

**Hay**—Carlots on track \$10 per ton for No. 1 timothy.

**Eggs**—Case lots, new laid, 12½¢ per dozen.

**Butter**—Pound rolls, 18 to 19¢; medium, 16 to 17¢; creamery, tubs, choice, 21 to 22¢; prints, 22 to 23¢.

**Cheese**—12½ to 11½¢ for job lots of old cheese, and 11½¢ for new.

**Hides**—61¢ for No. 1 cows, No. 1 steers, 75¢; country hides, 1/2 under these prices; calfskins, 10¢ for No. 1, and 8¢ for No. 2 sheepskins, 75 to 90¢ each; tallow, 61½ to 63¢.

**Wool**—Washed fleece, 12½ to 13¢ unwashed, 7¢.

**Beans**—\$1.30 to \$1.40 per bushel for job lots of hand picked.

**Dried Apples**—Cut to 5½¢ for round lots, evaporated, 10½¢.

**Maple Syrup**—New is quoted here at \$1.05 to \$1.10 per imperial gallon, in bulk or gallon tins.

**Honey**—10 to 10½¢ per pound in bulk; in frames, \$2 to \$2.50.

**Poultry**—Spring chickens, dressed, 90 to 90¢ per pair; turkeys, 12½ to 15¢ for fresh killed.

**Potatoes**—75¢ per bushel for carlots.

### Montreal Grain and Produce.

Special to The Commercial.

**Spring wheat** is 1/2¢ higher than a week ago. Flour is unsettled owing to action of big milling companies.

The Ogilvie Company has put the price of standard wheat at 81¢ to \$1.00 and bakers' to \$1.80, while the Keweenaw Company still holds at the old figure, 25¢ below these prices.

Rolling oats and feed are steady. Receipts of creamery butter have increased nearly 100 per cent. and prices are 1/2¢ lower than a week ago.

Western creameries are offering the balance of their April make at 24¢ here. Cheese stocks are now reduced to small compass and the market is excited and firm.

**Wheat**—No. 1 spring wheat, afloat, May, quoted at 70½¢.

**Barley**—50¢ for feed.

**Oats**—No. 2 white oats are offering 42½ to 46½ in stock.

**Flour**—Manitoba patent, \$3.75 to \$3.90; Manitoba Strong Babcock, \$3.40 to \$3.60; straight rollers, \$3.15 to \$3.45; winter patents, \$3.75 to \$3.85.

**Roller Oats**—\$1.30 to \$1.40 per barrel, and \$2.10 to \$2.15 in bags.

**Feed**—Manitoba bran, bags included, \$10; shorts, \$22.

**Hay**—No. 1, 10½¢ to \$9.50; No. 2, 8¢ to \$8.50.

**Quebec**—Ontario, 11½ to 12¢; Quebec, 11 to 12¢; Township, 11½ to 12½¢.

**Creamery, finest, fresh**, 21½ to 22½; under grades, 21 to 21½¢; western dairy rolls, 10½ to 11¢; Manitoba, 10 to 11¢.

**Egg**—Fresh case eggs, 12½ to 11½¢ per dozen; seconds, 10½ to 11¢.

**Maple Syrup**—No. 1, 80¢ for large tins; sugar, 7 to 9¢ for good.

### Toronto Live Stock.

Special to The Commercial.

**Receipts at the stock market yesterday** were 102 cars, including 720 cattle, 530 sheep and lambs, and 963 hogs.

**Export Cattle**—Were 15¢ easier, selling at \$5.25 to \$6.25 per cwt. for choice ones and \$5.50 to 85¢ per cwt. for medium.

**Butchers' Cattle**—Were steady, selling at \$5.25 to \$5.75 per cwt. for picked ones and \$5 to 85¢ per cwt. for choice ones. Common to fair ones sold at \$4 to \$5 per cwt.

**Feeders**—Were steady, selling at \$4 to \$5 per cwt. for short-pick feeders and \$4 to \$4.25 per cwt. for heavy stockers.

**Sheep**—Were 25¢ higher, selling at \$4 to \$4.50 per cwt. for export ewes. Lambs were easier, selling at \$5.50 to \$6.50 per cwt. for yearlings, and \$2.50 to \$3 each for spring lambs.

**Hogs**—Were 25¢ higher, selling at \$15.00 per cwt. for choice and \$6.25 per cwt. for lights and fats.

### FRIDAY'S MARKETS.

**Receipts at the stock yards yesterday** were 76 cars, including 250 sheep and lambs, and 1200 hogs.

**Export cattle** were in good demand as Tuesday's prices. Butchers in keen demand and directly to immediate purchasers for lower prices. Picked lots sold at \$5.25 to \$5.85.

**Feeders** were firm and unchanged. Sheep and lambs were in demand and unchanged. Hogs steady.

### Montreal Live Stock.

Special to The Commercial.

**Receipts at the East End abattoir on Monday** were 700 cattle and 1500 sheep and lambs.

The tone of the market was weaker and prices were at 4½ to 5½¢ for really choice stock. The demand was fairly good and a more active trade was done at the lower range of prices, which resulted in the market being well cleaned up of all the offerings.

Choice stock sold at 5½ to 6¢, but good holders asked as high as 6½¢. Good cattle were at 4½ to 5½¢ and the lower grades at from 3¢ to 4½¢ per lb. The demand for sheep was fairly good and the rates were made at 3½ to 4¢, and yearlings brought 4½ to 5¢ per lb. The supply of spring lambs was small for which the demand was fair at from \$2.50 to \$4

each. A good trade was done in calves at prices ranging from \$1.50 to \$7 each. The demand for live hogs was good at 6½ to 6½¢ per lb.

### THURSDAY'S MARKETS.

**Receipts at the East End abattoir yesterday** were 500 cattle, and 75 sheep.

Butchers' cattle were in good demand at a slight decline. The top price paid for a yearling of old sheep sold at 3¢ to 3½¢.

Yearlings at 4½ to 5¢. Spring lambs were scarce and higher, at to \$3.50 each. Fat hogs 6½ to 6½¢.

### British Live Stock Market.

**London, April 21**—Since this day week a weaker feeling has developed in the market and prices for choice American cattle show a decline of 1¢, while those for Canadian are only 1½¢ lower.

The trade to-day was slower, and sales of choice American cattle were made at 14½¢, and Canadian at 13½¢.

The market for sheep did not improve, and American was steady, with sales of American woolled at 15¢, and clipped at 14¢.

Liverpool, April 21—There was also a weaker feeling in this market for Canadian cattle, and prices are ½¢ lower, at 13 to 13½¢.

### Eggs in Demand.

**Chicago, April 25**—The struggle for the control of the eggs of the country has become the focus in the whole range of farm products, says the Record-Herald. Every corner of the Westing searched for eggs by agents for Swift & Co., Armour & Co., and a few smaller dealers, who have capital enough to enable them to compete with these leaders of this competition. As a result of this competition, prices paid to farmers are rapidly advancing, and every indication points to unprecedented high prices for cold storage eggs next winter.

### Grain Inspection.

**During the week ending April 21** there were inspected at Winnipeg 1,540 cars of grain, comprising the following:

**Wheat**—No. 1 hard, 138 cars; No. 1 northern, 434 cars; 2 northern, 69 cars; 3 northern, 20 cars; No. 4, 13 cars; feed, 2 cars; rejected, 1, 8 cars; rejected, 2, 7 cars; no grade, 45 cars; rejected, 2 cars.

**Total inspection** of wheat of 1,400 cars.

**Oats**—No. 2 white, 20 cars; 2 mixed, 10 cars; feed, 8 cars; no grade, 1 car; total, 48 cars.

**Barley**—Feed, 1 car.

**Eggs**—No. 2, 1 car.

For the previous week the returns included 762 cars. For the corresponding month last year the inspections were 1661 cars of grain, and two years ago, 282 cars.

Howard Annals has arranged with New York capitalists to build a beet root sugar mill at Whitty, Ontario.

### CITY BOX FACTORY

### Gzorzynsky & Grant

Manufacturers of all kinds of boxes, crates, butter and egg cases and fillers. Lock corner and printed boxes.

### 93 and 95 Lombard STREET

### WINNIPEG.

### The W. H. Malkin Co. LIMITED.

### Importers and Wholesale Grocers

Packers of the Celebrated VICTORIA CROSS Evaporated Fruits, Teas and Coffees.

HEADQUARTERS for Sago, Tapioca, Rice and all classes of English Groceries.

Prompt attention to all letter orders.

137 Water St., - VANCOUVER, B.C.

### HODGSON, SUMNER & CO.

### Dry Goods Smallwares Fancy Goods

345-347 and 349 St. Paul St. MONTREAL.

Represented by A. C. McLaughlin, P. O. Box 303, Winnipeg.

### SEEDS SEEDS

The Northwest Seed and Trading Co., Ltd. have opened with a complete stock of

### Fresh Garden, Field and Flower Seeds

Stock selected with a special view to the requirements of this market. Mr. Chester having had over 20 years experience in the seed trade here.

### NORTHWEST SEED & TRADING CO., LTD.

505 Main St. Winnipeg.

### W. R. Johnston & Co. Ltd.

### WHOLESALE CLOTHIERS

Our stock is at all times well assorted, and we are, therefore, enabled to execute immediate orders promptly.

### TORONTO.

### Wholesale Millinery

At this season of the year time is of the first importance. We carry a full line of

### EVERYTHING IN MILLINERY

and fill all orders same day as received. This means a saving of five days at least as compared with orders sent east, besides

### THE GOODS ARE NEW, THE PRICES RIGHT, THE STYLES CORRECT.

Send us a Trial Order.

### THE D. McCall Co.

WINNIPEG, MAN.

MONTREAL TORONTO OTTAWA

Chicago Board of Trade Prices.

Chicago, April 21.—Closing wheat: May 75 1/4, July 75 5/8, Sept. 75 3/4, 1906...

Chicago, April 22.—Closing wheat: May 75 1/4, July 75 5/8, Sept. 75 3/4, 1906...

Chicago, April 23.—Closing wheat: May 75 1/4, July 75 5/8, Sept. 75 3/4, 1906...

Chicago, April 24.—Closing wheat: May 75 1/4, July 75 5/8, Sept. 75 3/4, 1906...

Chicago, April 25.—Wheat: May 74 3/4, July 75 1/2, Sept. 75 3/4, 1906...

Chicago, April 26.—May wheat 74 1/2, July 75 1/4, Sept. 75 3/4, 1906...

Chicago, April 27.—May wheat 74 1/2, July 75 1/4, Sept. 75 3/4, 1906...

Chicago, April 28.—May wheat 74 1/2, July 75 1/4, Sept. 75 3/4, 1906...

Chicago, April 29.—May wheat 74 1/2, July 75 1/4, Sept. 75 3/4, 1906...

Chicago, April 30.—May wheat 74 1/2, July 75 1/4, Sept. 75 3/4, 1906...

Chicago, April 31.—May wheat 74 1/2, July 75 1/4, Sept. 75 3/4, 1906...

Chicago, April 32.—May wheat 74 1/2, July 75 1/4, Sept. 75 3/4, 1906...

Chicago, April 33.—May wheat 74 1/2, July 75 1/4, Sept. 75 3/4, 1906...

Chicago, April 34.—May wheat 74 1/2, July 75 1/4, Sept. 75 3/4, 1906...

Chicago, April 35.—May wheat 74 1/2, July 75 1/4, Sept. 75 3/4, 1906...

Chicago, April 36.—May wheat 74 1/2, July 75 1/4, Sept. 75 3/4, 1906...

Chicago, April 37.—May wheat 74 1/2, July 75 1/4, Sept. 75 3/4, 1906...

Chicago, April 38.—May wheat 74 1/2, July 75 1/4, Sept. 75 3/4, 1906...

Winning Closing Wheat.

No. 1 hard cash about closed Saturday at 77 1/4, No. 1 northern at 74 1/2 and 2 northern at 72 1/2.

Liverpool Cattle Market.

Liverpool, April 25.—Canadian cattle quoted steady at 14 to 14 1/2 per cent, estimated dressed weight.

London Sugar Market.

London, April 25.—April option 3 1/2 lower at 6s.

Liverpool Cattle Market.

Liverpool, April 25.—Finest Canadian 54s to 56s.

Large Purchase of Horses.

James Ryan, of Ryan & Paves, Winnipeg, has returned from Montana, whither he went to purchase horses...

A New Local Industry.

Merrick, Anderson & Co. have added a complete bagging plant to their wholesale business at Winnipeg...

Chicago Live Stock.

Chicago, April 25.—Cattle—Good to prime steers, \$7.50 to \$7.50, poor to medium \$4.25 to \$6.50...

Additional Tenders.

Tenders are required by May 3, by Architect Griffith, for a dwelling on McMillan avenue...

Tenders will be received up to May 17 for the delivery at Medicine Hat of the following supplies for natural gas plant...

Money.

New York, April 25.—Closing quotations: Prime mercantile paper, 4 to 5 per cent. Sterling exchange, easier at 4 7/8 for demand...

The report on Chinese and Japanese immigration will not be acted on this session of parliament...

Bank Clearings.

The following are some of the weekly Canadian bank clearings as compiled by Bradstreet's for the week ending April 24...

The Weather.

The weather has been generally fine this week, with several showers of days. There was snow in some districts between Saturday last and Monday...

Western Business Items.

Several large ranchers from the States are locating in the Territories. A great rush of natural gas has been struck in the northwest well at Medicine Hat, Assn. The town will be lighted and heated with the gas...

Wheat Reviews.

New York, April 25.—Bradstreet's held partly because of marked irregularities in weather conditions and extreme temperatures...

Wheat Reviews.

New York, April 25.—Bradstreet's held partly because of marked irregularities in weather conditions and extreme temperatures...

282,129 bushels in this week last year. R. G. Dun & Co. says of wheat: While the present crop yield...

NEW YORK WHEAT.

New York, April 25.—Wheat receipts 233,062 bushels, exports 180,765 bushels...

Movements of Business Men.

W. E. Rugg, secretary-treasurer of the Western Retail Implement Dealers Association, was in Winnipeg this week...

The Commercial Men.

A. C. Beach, of Montreal, was in the city this week, returning from a western tour...

Notes.

The Manitoba and Keewatin Railway was today re-chartered at Ottawa...

D. A. Stewart, member of parliament for Ligar, Man., in parliament yesterday advocated the establishment of a prison in Winnipeg...

The storehouse of the Anchor Kitting, located in Hudson Bay, was destroyed by fire last night...

The machinists in the Northern Pacific Railway company's shops at Brainerd, Minn., have been striking this week...

Mr. Sifton has introduced a bill in the Dominion House extending the tunnel through the Rocky Mountain Park at Banff from 200 to 465 square miles...

The last year's board of trade held its annual meeting in Winnipeg. He elected the following officers: President, H. S. Crawford; vice-president, P. H. Newman...

F. J. Weber, the Buffalo contractor, has received the contract from the Canadian Pacific Railway to build a new steel elevator, with a capacity of three million bushels, at Fort William...

The Pacific Selling company has announced prices on the 1905 pack of fancy No. 1 hard wheat...

British Columbia

OFFICE OF THE COMMERCIAL

Business in British Columbia.

Vancouver, April 21. The failure of Thom, Dunn & Company, iron, hardware and supply merchants, whose interests in the province were numerous, caused much speculation in Vancouver, owing to the supposed sound financial status of the firm. No statement of the firm's affairs has been made public, but it is reported that the assets are more than the liabilities and the securities are good. The failure is said to be for \$125,000, on which the company was bound to carry on the business, a hundred cents on the dollar will be paid. The cause assigned for the failure is said to be unfortunate ventures in mine operations drawing too much ready cash from the business, one or two other minor failures are reported.

Fisher and Company were the largest retail grocers in the city until they sold out their good will as well as their business for a large sum to Welsh & Nightingale. The assumption of very heavy financial obligations caused difficulties in spite of an enormous trade and fair profits, and it was impossible to meet obligations. The business was sold to the highest bidder and bought in by Mr. Welsh for a figure which will enable the business to be conducted hereafter on a sound basis.

In the wholesale market this week there were many changes which the Westminister the usual weekly market was abundantly supplied with butter, produce and all prices much lower than last week. Beef was quoted at 8c to 12 1/2c, mutton at 9c to 11c, pork at 9 1/2c to 11c, butter brought 30 cents, duck eggs 50 cents, 14c green apples, a ham \$1.00. But both 5c, bushels and lettuce, 4c for three bushels, a dozen a bucket, \$3 to \$11 in a dozen, and chickens, \$7 to \$9 a dozen. British Columbia potatoes are coming in from Puget Sound at \$22, which has caused some active shipping from here. Large shipments of apples are going forward to Dawson from the Canadian Northwest. It is said Canada has entirely cut out its trade from the States, owing to the duty and superior stock available.

There is some improvement in trade this week over last, collections, however, are slow. Building operations are very active.

Prices at Vancouver.

Social to The Commercial. Vancouver, April 20. Cured meats show further advances, hams having gone up for this week, and being clear higher at \$1. Manitoba creamers better in price at the market. Manitoba butter is offered at 18 to 20c for best. PEED-Notman's Mills, chick \$27 per ton; bran, \$22 shorts, \$21 oil cake meal, 35c per ton, f.o.b. Vancouver, including duty, sold on imported stock. WHEAT-Manitoba 25c per ton; Oregon wheat \$20 per ton. FLOUR-Manitoba, patent per barrel, 12 1/2c; strong rollers, 14 1/2c; Oregon, \$4.60. HAY-Fraser River valley, \$18 1/2c per ton, straw per bale, 50c. MEAL-Rolled, 90lb sack \$2.30; 100 lb sack, \$2.40; four 25lb sacks, \$2.50. Corn, 100 bushels, \$1.50; 50 bushels, \$2.25 per 100lb. LIVE STOCK-Steers, \$5.50/60 per 100lb; sheep, 3c per 100lb; hogs, \$5.50/60 per 100lb. POULTRY-Turkeys, 15c per lb; geese, 12c; ducks, 12c. PRESERVED MEATS-Beef, 50/10c; mutton, 35c; pork, 30/10c; ham, 10/10c; Australian mutton, 5c. CURED MEATS-Hams, 15c; corned beef, 16c; backs, 15c; rolls, 15c; long corned, 12c. LARD-Tin 15c/14c; pigs, 12c; tins, 12c. BUTTER-Local creamery, 20c; Manitoba dairy, 19c; hold, 19 1/2c; California creamery, 22c. EGGS-Fresh local, 5c. California egg, 4c. CHEESE-Ontario cheese, 14/14c. CUCUMBERS-Toronto, 31c per pound; for locals, \$2.25 per 100. Apples-Australian, Ontario, 5c per pound; for locals, \$2.25 per 100. Apples-Canadian, 5c per 100; tomatoes, \$2.25. PEAS-Flourished, 5c; ammonia, 5c; halibut, home, 4c; white, 5c; salmon, 5c; cod, 5c; herring, 5c; crabs, 5c; oysters, smoked mutton, 8c; smoked halibut, 10c per lb. GAME-Ducks, 15c; wild, 5c; teal, 5c; Oregon and British, 5c per pair. GREEN FRUIT-Tomatoes, \$2.50/2 1/2c; Oregon apples, \$1.50/2 per box, local ap-

ples, \$1.50 per box; Australian apples, \$2.50; bananas, \$2.50/2 1/2c; California navel oranges, \$2.50; local apples, \$2.50; seedling, \$2.50 per box; California rhubarb, \$2 per box. SUGARS-Powdered, 1c; fine and bar, 5c; Fair, 4c; granulated, 4 1/2c; extra C. A. B., yellow, 40c. SYRUPS-Maple, 40c; corn, 10 gal, 10c; 5 gal, 10c; 1 1/2 gal, 10c; 1/2 gal, 10c. HARVING-Bar iron, home, \$2.00. Horses show mules, 40c; mules, 10 and 10c; horse shoes, kegs, \$5; nails, base 10c; nails, 10c; nails, 10c; nails, 10c; white lead, \$7.50; putty, \$5.50; barbed wire, \$3.50 per 100lb.; glass, first break

B. C. Business Notes.

Thos. Dunn & Co., Ltd., hardware merchants and ship chandlers, Vancouver, have assigned. The Victoria Steamship Company has been incorporated at Victoria for the purpose of carrying on a shipping business. The Buxham Ferry Company, Limited, of Golden, has been incorporated with an authorized capital of \$5,000, in 200 shares. The corporate name of the Egan-Wilson Company, Limited, of Victoria, has been changed to the H. Wilson Company, Limited. The Tourist Association of Victoria, B. C., has issued a neat little folder descriptive of that city and district as a tourist resort. F. I. Clark is secretary.

The sailing season on the Pacific coast ends on Wednesday next, and it is anticipated that it will be almost a total failure.

The initial number of the Nelson Daily News, which succeeds the Daily Miner, is to hand. P. J. Dean, a well known British Columbia newspaper editor, is editor and proprietor, he having purchased the plant of the defunct Miner.

Iron manufacturing firms in British Columbia have amalgamated, and the work of the province will be distributed amongst the several plants according to their capacity. The firms in the amalgamation are the Vancouver Engineering Co. and the Allison Iron Works, Victoria; the Allison Iron Works, Vancouver; the Victoria Machine and Depot Co., Vancouver; the Gray Iron Works, the Schuchman Iron Works, the Dobson Iron Works, Nanaimo, and the Wilson Iron Works, Victoria.

The British Columbia bureau of information is doing good advertising work in the interests of that province, as circulating bulletins containing information on various British Columbia industries, etc. The latest bulletins contain the text of a paper on 'British Columbia of Today,' which was recently read by the Hon. J. H. Turner, before the Royal Colonial Institute, also a description of 'The Skeena River District and Population of British Columbia According to Proposed Electoral Districts.'

R. P. Rithet & Co., of Victoria, say in their latest circular: 'The decline in grain freights noted in our last circular was followed by still lower rates, and several charters have been made at from 22 1/2c to 25c id usage options. The indications of a large grain crop are favorable, and there is a feeling that the lowest point has been touched. Lumber freights show a general decline. Our usual salmon supplement accompanies this issue, from which it will be seen that the total B. C. pack for 1901 amounts to 2,290,154 cases, being 229,000 more than put up in 1897. Owing to the increased consumption of the article, and also to a well organized Fishers Association, the market has not suffered to the same extent as in previous big years, an attention dealers are not yet purchasing extensively, there is a fair prospect of stocks working off at satisfactory prices.'

A bill to extend the law prohibiting the killing of wood buffalo until 1907, has been introduced in parliament at Ottawa.

A new schedule of freight rates has been announced between Port Arthur and Port Williams, Ontario. The new rates to Winnipeg are as follows: Classification 1, 8c; 2, 7 1/2c; 3, 7c; 4, 6 1/2c; 5, 6c; 6, 5 1/2c; 7, 5c; 8, 4 1/2c; 9, 4c; 10, 3 1/2c. These rates show a reduction of 4c on first class, 2c on 2nd, 3rd, 4th and 5th, and 1c on 6 7 and 10 classes.

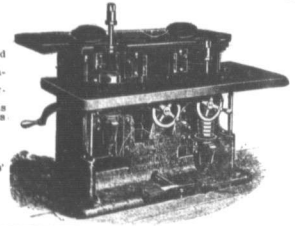
D. A. Stewart, railway contractor, will leave on Monday with a large force of men, teams and construction appliances, to commence work on the Canadian Pacific Railway Co.'s extension from Mossburn. This extension will be built 100 miles this year. Dressed meats have advanced sharply in price in Toronto, as a result of united action on the part of the butchers of that city. Sirloin steak is worth 25c per pound as against 15c before and round steak is worth 15c as compared with 12c. Other fresh meats have advanced proportionately.

Neil Keith, railway contractor, left on Friday last with a force of men, teams and construction appliances, to commence work on the extension of the Canadian Northern railway from that point westward toward Bow, Alberta.

It was stated at Ottawa recently that Canadian Pacific has given out contracts with Canadian and United States firms for \$5,000,000 to provide more locomotives and rolling stock for the road, the contract calls for the delivery of the locomotives and cars by August 1st, in time to remove the crop.

CANADIAN AND AMERICAN

IMPROVED Wood-working Machinery Iron-working Machinery Saw Mill Machinery Brick and Tile Machinery and Dryers Concrete and Elevating Machinery Druggists and Plating Mill Extruders Heating & Ventilating Systems Passenger & Freight Elevators Corliss & Slide Valve Engines Gas and Oil Engine Locomotives and All Machinery Repaired. Sold at strictly manufacturers prices by J. L. NELSON & CO., WINNIPEG.



Lovely Lucina, the Goddess of Light, gives her fair name to the

LIGUA CIGAR The very latest product of skill, experience and enterprise. Acknowledged by connoisseurs the BEST 10 CENT CIGAR YET PRODUCED. We ask your judgment on them. GEO. F. BRYAN & CO., WINNIPEG, MAN.

SOMETHING NEW Crab-Apple Cider We have just received a carload Sweet Crabapple Cider. To introduce it we send a dozen in glass and drip pan free with first barrel. 35c Per Gal. Give us a trial order. BRIGHT & JOHNSTON, Wholesale Fruits, WINNIPEG.

J. G. MACKENZIE & CO. WHOLESALE DRY GOODS. We are now offering to the trade liberal terms and large discounts in the following lines: Curtain Nets, Embroideries, Muslins, Silks, Ribbons, Dress Goods, Velvet, Cloths, etc., etc. In addition to which we are now showing our immense range of Staples at old prices. The present is an exceptional opportunity for close buyers visiting the market. A call is respectfully solicited. J. G. Mackenzie & Co., 381 and 383 MONTREAL, St. Paul Street

Good  
Gas Lamps  
\$2.25

## BICYCLE SUNDRIES

OF ALL KINDS

Lamps (Oil and Gas.) Tires, Inner Tubes, Cement, Locks, Graphite, Pant Clips, Carbide; in fact, everything in sundries. Prices lower than ever at the Red Bird Bicycle Store

Canada Cycle & Motor Co. Ltd.

464 MAIN STREET

Foot  
Lamps  
50c.

Solar  
Lamps  
\$3.50

Push  
Button Bells  
75c.

## SEEDS

Merchants for 1902

### PUSH THE Steele-Briggs Seeds

They have the four points for success in your seed business, viz.:

- 1st Always Reliable.
  - 2nd Most Widely Advertised.
  - 3rd Most Attractively Got Up.
  - 4th Give a Good Round Profit.
- See our big daily and weekly "ads." They don't forget the merchant. Please return the compliment by pushing our seeds whenever possible, from box or catalogue.
- We handle all seeds in all quantities, and cheerfully answer any written or wire enquiries.

THE STEELE-BRIGGS SEED CO. Ltd  
Toronto

## LEITCH BROS.

Oak Lake

"Anchor  
Brand" **Flours**

FROM NO. 1 HARD WHEAT.

Bran, Shorts and all kinds of  
Chopped Feed and Grain.

ADDRESS

OAK LAKE, MAN.

# GELLYLOID STARCH

*Has been too  
successful to  
escape imitation*

*Be wary of the  
"Just-as-Good."*

## The Brantford Starch Works

LIMITED

BRANTFORD, ONT.

CANADIAN PRODUCERS

### LEADING COMMERCIAL HOTELS

## WINNIPEG

## HOTEL LELAND.

Headquarters for commercial men.

CITY HALL SQUARE

## DRYDEN, ONT.

## DRYDEN HOTEL.

A. R. HUTCHINSON, Prop.

Headquarters for commercial and mining men and the general public.

## RAPID CITY.

## QUEEN'S HOTEL.

THOS. EVOY, Prop.

Headquarters for commercial travellers. Free bus nets all trains.

## BIRTLÉ

## ROSSIN HOUSE.

B. FENWICK, Prop.

Good accommodation; telephone connection with the station; sample rooms; inside closet. Livery in connection.

## TREHERNE

## LELAND HOTEL.

W. F. LEE, Prop.

First-class accommodation for commercial travellers.

## GLENBORO

## QUEEN'S HOTEL.

M. E. NEVINS, Prop.

Best hotel on the Glenboro branch. Three large and first-class sample rooms.

## NAPINKA

## HOTEL LELAND.

B. HALLONQUIST, Prop.

First-class in every department. Sample rooms. Every convenience for the travelling public. Opposite C. P. R. depot.

## DELORAINÉ

## PALACE HOTEL.

LAIRD &amp; MCGARVEY, Props.

New building, new furnishings, furnace heating, acetylene gas. First-class. Large sample rooms.

## MACGREGOR, MAN.

## THE STANLEY HOUSE.

E. WATSON, Prop.

First-class accommodation for travellers. Commodious sample rooms. Livery and feed stable in connection. All kinds of teaming attended to.

## ELKHORN

## HOTEL MANITOBA.

W. J. DIXON, Prop.

New building, new furnishings, furnace heating, acetylene gas. First-class. Large sample rooms.

## FLEMING

## WINDSOR HOTEL.

W. GEO. CLEVERLY, Prop.

New management. Rates \$1.25. Renovated and re-furnished. Commodious sample rooms. Heated by hot air. Livery and feed stable in connection. Inside closet.

## ROSTERN

## OCCIDENTAL HOTEL.

H. A. McEWEN, Prop.

New house. Up-to-date appointments

## RED DEER, ALTA.

## ALBERTA HOTEL.

BEATTY &amp; BRINDLE, Props.

C. and E. dining hall, good sample rooms and every accommodation for commercial travellers and the general public.

## WETASKIWIN, ALTA.

## CRITERION HOTEL.

F. M. HAMILTON, Proprietor.

New buildings, new furnishings, hot and cold baths, heated by furnace and lighted with gas, good sample rooms.

## STRATHCONA

## STRATHCONA HOUSE.

W. H. SHEPPARD, Prop.

First-class. Opposite depot.

## EDMONTON

## ALBERTA HOTEL.

JACKSON &amp; GRIERSON, Proprietors.

Sample rooms. Free bus. Livery in connection.

## MACLEOD

## MACLEOD HOTEL.

THOS. WILTON, Prop.

Good sample rooms and every accommodation for commercial travellers and the general public. Rates \$2.00 per day. Bus to and from all trains.

## PINCHER CREEK

## HOTEL ARLINGTON.

MITCHELL &amp; DOBBIE, Props.

New buildings, new and commodious bedrooms, parlors, bathrooms and sample rooms. Newly furnished. Heated throughout by hot air; lighted by gas. Electric bells in every room. Cuisine second to none; and the best stock of wines, liquors and cigars in Alberta. Miss Mitchell, Matron.

## NEW WESTMINSTER, B. C.

## HOTEL COLONIAL.

J. E. INSLY, Proprietor.

Special attention given to commercial travellers. Charges moderate.

## VANCOUVER

## HOTEL LELAND.

R. DOWSWELL, Proprietor.

Refurnished and remodelled. Rates \$1.50 to \$2.00 per day. Long distance phone. One block from C. P. R. Depot and steamboat wharves. W. E. Grigor, Manager.

## VICTORIA

## HOTEL VERNON.

JAS. PATTERSON, Mgr.

Headquarters for commercial and business men. Free bus and sample rooms.

## KAMLOOPS

## GRAND PACIFIC HOTEL.

P. A. BARNHART, Proprietor.

The best hotel in Kamloops. Ample accommodation.

## GREENWOOD, B. C.

## IMPERIAL HOTEL.

GRAHAM &amp; PARRY, Proprietors.

Headquarters for commercial travellers and all business men.

## PHOENIX, B. C.

## THE VICTORIA HOTEL.

B.C. Hotel Co., Ltd., B. TOMKINS, Mgr.

Electric bells, electric lighted, furnace heated, finest liquors and cigars. Sample rooms.



# PERRIN'S

"Newport" Brand of Chocolates  
Made in forty different varieties.  
Name on every piece.

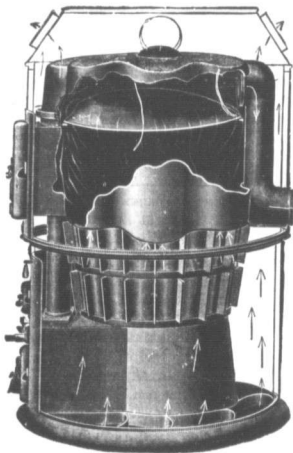
**D. S. PERRIN & COMPANY, Limited, LONDON, ONT.**

MANUFACTURERS OF BISCUITS AND CONFECTIONERY

Winnipeg Warehouse—327 Notre Dame Avenue

Write for Quotations

## THE IMPERIALIST FURNACE



IMPERIALIST.

For ..  
Hard Coal  
Soft Coal  
Coke or Wood  
Burning

Large Feed Door  
Opening  
For Wood  
12 in. Wide  
13 in. High

A Self  
Cleaning  
Furnace  
With  
Down Draft

Made in  
Two Sizes of  
Fire Pots  
20 inches  
24 inches

### BURNS ANY KIND OF FUEL

Sectional Fire Pot.

Heavy Corrugated Cast Iron Radiator.

Deflecting plate forces all heat against surface of Radiator

Has hanging smoke guard on feed door.

Simple construction, free from escaping gas or smoke.

Made entirely of cast iron.

### All Cast Iron Furnaces are Most Durable.

Large FEED DOOR 12 inches wide, 13 inches high.

Extra Large Combustion Chamber.

Triangular Bar Revolving Grates.

Particularly deep Ash Pit.

ESPECIALLY SUITABLE FOR FARMERS or others wishing to burn more or less wood, feed door being large, and interior very roomy.

THE ONLY FURNACE that gives equally good results with either wood or coal for fuel.

Write us if interested.

Manufactured by

THE **JAMES SMART MFG. CO.**

BROCKVILLE, ONT. WINNIPEG, MAN.

High Class Heating Goods a Specialty

## FALL SAMPLES NOW READY

SEASON 1902

Our Mr. D. K. Book and Mr. Robt. Balmer are now in the West with a complete range of Men's, Youths', Boys', and Children's ready-to-wear Clothing. It will pay you to wait and see their samples before placing your order.

**McKENNA, THOMSON & CO.**

423, 425, 427, 429 St. James Street

MONTREAL

Permanent Sample Room—Room 6 Sanford Block, Winnipeg



## In Farm Implements

**THE FROST & WOOD  
LINE IS UNEXCELLED**

WE MANUFACTURE:

**Binders      Drills      Disc and Drag Harrows**  
**Mowers      Seeders      Scufflers**  
**Hay Rakes      Cultivators      Spring Tooth Harrows**  
ETC.

We are Western Agents for]

**JOHN THOMPSON SONS MFG. CO'S  
RIDING AND WALKING PLOWS**

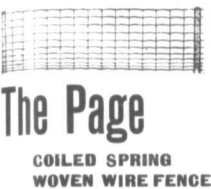
**Remember** we are ready to part with these implements at moderate price and on reasonable terms

Catalogue on application.

*THE Frost & Wood Company*  
LIMITED.

Western Canada  
Branch—  
WINNIPEG, MAN.





The Page  
COILED SPRING  
WOVEN FENCE

When a wire or a runway team enters a wire fence, or two-legged animals climb over it, how much more is it a quarter-inch cross wire? Is it a damage? Think of it, this "Page" and get the best. No other wire like it. For further particulars apply to

ROSS & ROSS  
General Agents, Winnipeg.

Mr Alex Nalembik, of Milwaukee, writes under date of March 11th, to say: "The washing machine is received all right and is doing fine. It is a great improvement on the one I had. Why is it that those washers are in use now at the nurses' department of the General Hospital, Women's Home, Children's Home, Deaf and Dumb School, Kewley Institute, Provincial Gaol, many of the best laundries, hotels and boarding houses, and perhaps five hundred homes in this city, and thousands of homes in the country? Simply because they are the best in the market. I have ordered \$300 for the first washer that will clean as well as mine with same quantity of suds. I have the best and can prove it. I want one merchant to sell them for me. They sell from \$10 up to \$100. Can do work with no gallon of suds."

T. McCROSSAN,  
12 Baymante Ave. Winnipeg.

Spring Lines

Now in stock, a full range of Spring Goods, Clothing, Furnishings, Small-wares, Fancy Goods, etc. We sell especially to our established RUBBER COATS which are of good quality and marked low.

All orders will receive prompt attention.

EASTERN CLOTHING HOUSE  
J. GENSER, Prop.

223 Alexander Ave. - Winnipeg.

WANTED—SEVERAL PERSONS OF character and good reputation in each state now in this country required to represent and advertise our established wealthy business house of solid financial position. Salaries weekly. Expenses additional. All payable in cash unless otherwise stated from head office. Horse and carriage furnished when necessary. References. Manager self-addressed stamped envelope. Enclose ad. On-Canada building, Chicago.

TO HUNTER,  
MITCHELL & CO.  
Importers and Manufacturers

High Grade Coffees  
High Grade Spices

"Best Excellent" Cocoa  
"Most Excellent" Chocolate  
Kicking Powder  
Flavouring Extracts, Etc.

TORONTO - ONTARIO

WINNIEPES PRICES CURRENT

GROCERIES.

Prices to retail dealers for ordinary lots, with usual discounts for cash or large lots.

Canned Goods. Per Case.

Table listing various canned goods such as Apples, Beans, Corn, Peas, Tomatoes, etc., with prices per case.

Canned Meats. Per Case.

Table listing various canned meats such as Corn beef, Lunch, Lunch tongue, etc., with prices per case.

Chicken, Duck or Turkey. Per Case.

Table listing various chicken, duck, or turkey products with prices per case.

Green Rio. Coffee. Per 94.

Table listing various coffee products with prices per 94.

Cereals. Per Sack.

Table listing various cereal products such as Split peas, Rolled barley, etc., with prices per sack.

Rice. Per 64.

Table listing various rice products with prices per 64.

Cigarettes. Per M.

Table listing various cigarette brands with prices per M.

Cured Fish. Per lb.

Table listing various cured fish products with prices per lb.

Dried Fruits. Per lb.

Table listing various dried fruit products such as Currants, Raisins, Apples, etc., with prices per lb.

California Evaporated Fruits.

Table listing various California evaporated fruit products with prices.

Apricots, standards. 10 1/2 10 1/2

Table listing various fruit products such as Apricots, Pitted plums, Nectarines, etc., with prices.

Matches. Per Case.

Table listing various match brands with prices per case.

Nuts. Per lb.

Table listing various nut products such as Brazil, Tarazona almonds, etc., with prices per lb.

Syrup. Per lb.

Table listing various syrup products such as Extra bright, Medium, etc., with prices per lb.

Sugar. Per lb.

Table listing various sugar products such as Assorted, Almonds, etc., with prices per lb.

Salt. Per lb.

Table listing various salt products such as Common, Common coarse, etc., with prices per lb.

Spices. Per Doz.

Table listing various spice products such as Assorted, Allspice, Cloves, etc., with prices per doz.

Teas. Per lb.

Table listing various tea products such as China, Choice, etc., with prices per lb.

Young Hyson. Per lb.

Table listing various Young Hyson tea products with prices per lb.

Shoe May picking. Per lb.

Table listing various shoe may picking products with prices per lb.

Tobacco. Per lb.

Table listing various tobacco products such as T. and B., etc., with prices per lb.

Wholesale. Per lb.

Table listing various wholesale products such as Coffee, etc., with prices per lb.

Cheating Plug. Per lb.

Table listing various cheating plug products with prices per lb.

Smoking.

Table listing various smoking products such as Virginia Gold, etc., with prices.

Wooden Ware. Per Doz.

Table listing various wooden ware products such as Pails, Star hoop, etc., with prices per doz.

CURED MEATS, ETC.

Table listing various cured meat products such as Lard, Pork, etc., with prices.

Smoked Meats. Per lb.

Table listing various smoked meat products such as Ham, Breakfast bacon, etc., with prices per lb.

Dry Salt Meats. Per lb.

Table listing various dry salt meat products such as Long clear, Beef, etc., with prices per lb.

Barrel Pork. Per barrel.

Table listing various barrel pork products with prices per barrel.

Meat Sundries.

Table listing various meat sundry products such as Summer sausage, etc., with prices.

DRUGS.

Following are prices for parcel lots, with usual reductions for unbroken packages.

Large table listing various drug products such as Alcohol, Bismuth, etc., with prices.

LEATHER. Per lb.

Table listing various leather products such as Harness, etc., with prices per lb.

**New Freight Tariffs.**

The Canadian Pacific railway have received their printed statements giving rates for lake and rail passenger and freight tariffs which is now considerably reduced.

The summer round trip rate to Montreal has been reduced from \$68.00 to \$61.35. The round trip rate last year stood for two months was \$62 from Winnipeg to Montreal. The rate has been made \$10 higher than the rate to Toronto which is amounting to \$55. These rates are good up to October 31 and include berths and meals on the upper lake steamers, which has been thoroughly done over and are now made comfortable in every way to the tourist.

Commencing on Saturday, April 21, the company announce that the steamboat express between Toronto and Owen Sound will commence running. The train will leave Toronto at 1:30 p. m. every Tuesday, Thursday and Saturday connecting at Owen Sound with the upper lake steamers, and leaving on Sunday, Tuesday and Thursday. A parlor car will be attached to this train to add to the comforts of the passenger.

The C. P. R. freight department are now in receipt of full information regarding lake and rail tariffs. From Montreal and points west to Winnipeg. The rate per 100 lbs. is as follows:

Class	Rate.	Per 100 lbs.	Last year.
1. From Montreal to Winnipeg	\$1.29	\$1.45	\$1.45
2. From Montreal to Winnipeg	1.29	1.23	1.23
3. From Montreal to Winnipeg	1.29	1.17	1.17
4. From Montreal to Winnipeg	1.29	1.11	1.11
5. From Montreal to Winnipeg	1.29	1.05	1.05
6. From Montreal to Winnipeg	1.29	1.00	1.00
7. From Montreal to Winnipeg	1.29	0.94	0.94
8. From Montreal to Winnipeg	1.29	0.88	0.88
9. From Montreal to Winnipeg	1.29	0.82	0.82
10. From Montreal to Winnipeg	1.29	0.76	0.76
11. From Montreal to Winnipeg	1.29	0.70	0.70
12. From Montreal to Winnipeg	1.29	0.64	0.64
13. From Montreal to Winnipeg	1.29	0.58	0.58
14. From Montreal to Winnipeg	1.29	0.52	0.52
15. From Montreal to Winnipeg	1.29	0.46	0.46
16. From Montreal to Winnipeg	1.29	0.40	0.40
17. From Montreal to Winnipeg	1.29	0.34	0.34
18. From Montreal to Winnipeg	1.29	0.28	0.28
19. From Montreal to Winnipeg	1.29	0.22	0.22
20. From Montreal to Winnipeg	1.29	0.16	0.16

From Montreal and points west to Brandon. The rate per 100 lbs. is as follows:

Class	Rate.	Per 100 lbs.	Last year.
1. From Montreal to Brandon	\$1.50	\$1.72	\$1.72
2. From Montreal to Brandon	1.50	1.66	1.66
3. From Montreal to Brandon	1.50	1.60	1.60
4. From Montreal to Brandon	1.50	1.54	1.54
5. From Montreal to Brandon	1.50	1.48	1.48
6. From Montreal to Brandon	1.50	1.42	1.42
7. From Montreal to Brandon	1.50	1.36	1.36
8. From Montreal to Brandon	1.50	1.30	1.30
9. From Montreal to Brandon	1.50	1.24	1.24
10. From Montreal to Brandon	1.50	1.18	1.18
11. From Montreal to Brandon	1.50	1.12	1.12
12. From Montreal to Brandon	1.50	1.06	1.06
13. From Montreal to Brandon	1.50	1.00	1.00
14. From Montreal to Brandon	1.50	0.94	0.94
15. From Montreal to Brandon	1.50	0.88	0.88
16. From Montreal to Brandon	1.50	0.82	0.82
17. From Montreal to Brandon	1.50	0.76	0.76
18. From Montreal to Brandon	1.50	0.70	0.70
19. From Montreal to Brandon	1.50	0.64	0.64
20. From Montreal to Brandon	1.50	0.58	0.58
21. From Montreal to Brandon	1.50	0.52	0.52
22. From Montreal to Brandon	1.50	0.46	0.46
23. From Montreal to Brandon	1.50	0.40	0.40
24. From Montreal to Brandon	1.50	0.34	0.34
25. From Montreal to Brandon	1.50	0.28	0.28
26. From Montreal to Brandon	1.50	0.22	0.22
27. From Montreal to Brandon	1.50	0.16	0.16
28. From Montreal to Brandon	1.50	0.10	0.10
29. From Montreal to Brandon	1.50	0.04	0.04

Proportional reductions are also made to other points which demand that reductions in every class of freight, including first-class freight, which was not being made, included in lake and rail reductions will be made. Mr. Langman states that other important announcements in regard to rates will be made in a few days and it is understood that among those will be an announcement regarding further reductions on wheat and flour.

**New Railway Investments.**

According to the Railway Gazette, the Canadian Pacific road has the following rolling stock now on order: seventy-two passenger cars, four of which are to be built at the Schenectady works of the American Locomotive Co., eight combinations at the Canadian Locomotive Co., Kingston, Ont.; and the remainder at the company's own shops. Also two dining cars, twelve combination dining and sleeping cars for use of the construction department; forty coaches, twelve sleeping cars, two parlor cars, one observation car, five baggage cars, 53 cars, three pile-drivers and 500 cars, fifty double-deck cars, fifty refrigerator cars, 300 coal cars, 218 stock cars, 1,841 box cars and 500 ore cars. The bulk of this equipment will be built at the company's own shops, except 1,600 forty-ton box cars, which will be built by Rhodes, Curry & Co., Amherst, N. S. The total is 2,679 cars and 72 locomotives.

The Cobden Club of London, England, has issued a manifesto signed by Lord Welby, vigorously protesting against the imposition of the corn duties.

The great Belgian labor troubles, which have been agitating the world for the past few weeks, are ended and the men are now back at work. It is generally believed that the trouble was largely of political origin.

**Steel Billets Scarce.**

New York, April 19.—Structural steel manufacturers have advanced prices for immediate delivery from \$3 to \$5 per ton. Quotations recently current, says the Journal of Commerce, and the supply of steel billets throughout the country is so small that manufacturers are still compelled to go abroad to purchase supplies for their mills. There is no famine as yet, although prevailing conditions, it is reported, make an approximation to the same. The scarcity of materials is particularly felt by small manufacturers, although the United States Steel corporation also feels the lack of the necessary supply of billets. The situation has a particular bearing on the question of steel rail supply. It is stated that the wants of the railroads will necessitate a much larger importation of rails this year than for some years past.

**Millers to the Prince.**

Winnipeg and the Canadian west generally will be interested to know that the product of the western flour will be used in the household of the Prince of Wales. Ogilvie's flour has been selected by the royal household against other brands. The following telegram has been received by Mr. Black, western manager of the Ogilvie Mills Co.:

W. A. Black, western manager, Ogilvie Mills Co., Montreal, Canada, Dear Sir.—I am pleased to inform you that my company has been appointed by special warrant, millers to His Royal Highness, and Ogilvie's flour will hereafter be used exclusively by the royal household. This is the greatest credit of the British Empire.

E. W. THOMPSON.

W. W. O. M. Co., Montreal, announcement said that while it was of course very gratifying to the company that Manitobans generally would feel proud to know that flour manufactured here from the product of their own fields would be given the preference in the royal household. This announcement Mr. Black says does not come as an entire surprise as their London correspondents had advised them that Ogilvie's flour would be exclusively in the manufacture of bread for His Royal Household by command of His Majesty.

Country hedges advanced 1/2c per pound at Chicago last week, making the price now 8 1/2c.

**New Freight Tariffs.**

W. H. McInnes, of the C. P. R., in a recent interview said: "New lake and rail merchandise and commodity tariffs have just been issued from all points in eastern Canada to points west of Fort William in Ontario and considerable reductions compared with those in effect during the lake navigation season last year. Similar tariffs are also being prepared, and will be issued as early as possible to the Territories and British Columbia.

"A new local mileage freight tariff is also being issued, covering freight traffic moved between stations in Manitoba and the Territories, which will show reductions in the rates previously in effect. Similar new tariffs are being issued on corduroy and slabs, five stock, grain, flour and mill-stone, brick clay, gravel stone, butter, eggs and cheese, all of which tariffs show considerable reductions compared with the rates previously in effect, and some of these tariffs, which in the past only covered points east of Moose Jaw in the Territories and Manitoba, have been extended, generally speaking, to cover the Territories as far west as Camrose, on the main line, and Crow's Nest on the Crow's Nest line.

"Reductions will be given when the new crop begins to move about September 1st of this year on grain from western points to Fort William, but in the meantime the present tariffs will continue in effect."

**New Machinery Sales.**

Among the recent contracts for new machinery closed by The Stuart-Arthur & Company Limited, Winnipeg, are the following:

A complete planting mill plant for W. H. Chubb, of Calgary, also two boilers and an engine, a water heater of special design and a steam pumping plant.

For H. Mutton, of Minnedosa, a complete power plant for his new elevator and a quantity of flour mill machinery sufficient to bring the mill there thoroughly up to date. This contract includes a 65-horse power automatic engine and a Universal boiler plant.

For Wilson & Co., of Arden, four mill boilers and a 100-horse power boiler, and a quantity of mill machinery, including a Universal bolting outfit. The boiler is of the standard pattern and has a solid single sheet bottom.

For the Mormons at Carleton, a complete 10-barrel flour mill plant with boiler and engine.

**Seed Prices.**

Winnipeg dealers in field and garden seeds report a very large demand for these at present. They are finding that the farmers of the west are buying an increasing quantity of seeds and clover seeds, with the exception of raising fiver crops. Most of the seed has already been sold, the prices by Winnipeg dealers, though the previous years combined. The following list of wholesale prices of Winnipeg may be interesting to those who retail merchants:

Brome grass, 12c per pound; timothy, 8c to 9 1/2c per pound; clover, 25c per pound; clover, 17c per pound; alfalfa, 17c per pound; Hungarian, \$1.00 per bushel of 180 lbs.; millet, \$1.00 per bushel of 180 lbs.; rye, 12c per bushel; wheat, 12c per bushel; potato onions, 8c per pound; flaxseed, 8c per bushel; field peas, golden, \$1.80 per bushel for imported; peas, Canadian variety, \$1.80 per bushel; split peas, 12c per bushel; western rye grass, 12c per bushel of 54 lbs.

**J. M. PERKINS**

WHOLESALE.

**SEEDS  
SEED DRILLS  
ONION SETS**

Commission Seed Boxes. Trade List Now Ready.

221 MARKET STREET, WINNIPEG, MAN.

**ACETYLENE**

THE 20TH CENTURY LIGHT

The Ontario Double-Generatorator auto made in all sizes from 10 to 100 lbs. Guaranteed to give satisfaction. Sold on trial. Shaffer's Barriers for sale.

Northwest Acetylene Gas Co.

312 Princess St., Winnipeg.

There are Many Profits for the Dealer in

**Happy Thought Ranges**

On each Range sold and others on the sales, each influences.



The leader more than 20 years ago and the Best on Earth To-Day. No range ever built, anywhere, enjoyed the popularity of the Happy Thought.

Dealer why not take the profit of a speciality. The Happy Thought has no competitor.

In all Happy Thought Ranges, and in them only, can be found the Patented Corrugated Oven. One-third more radiating surface in the oven, plates of which are rendered practically indestructible. One of the most valuable specialties ever introduced in Range construction.

**The William Buck Stove Co. Ltd.**

W. G. McMAHON  
Sales Agent, Winnipeg

W. C. MACDONALD, Actuary. J. K. MACDONALD, Managing Director.

# The Confederation Life Association

HEAD OFFICE  
TORONTO

There are no conditions as to residence, travel or occupation in the Unconditional Accumulative Policies issued by this Association. They guarantee Extended Insurance, Paid-up Policies and Cash Surrender values.

Manitoba, N. W. T. and B. C.—Winnipeg Office, 467 Main Street.  
 CHARLES E. KERR, Sec.-Treasurer. DANIEL McDONALD, Manager.  
 HENRY WORSLEY, City Agent.

Brandon Office ..... F. W. GILL, Cashier.

## MOYIE LUMBER COMPANY

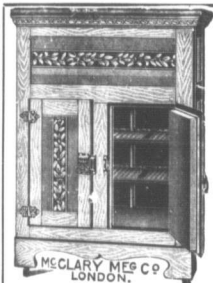
Manufacturers and Dealers in

**LUMBER LATH SHINGLES  
MOULDINGS  
CEDAR POSTS AND POLES**

DRY KILN AND PLANERS IN CONNECTION

SAMUEL GRANT, Manager

MOYIE, B.C.



### To The Trade

Now is the time to place your orders for REFRIGERATORS and ICE CREAM FREEZERS. We are exclusive agents in Canada for the "LEONARD CLEANABLE REFRIGERATORS," which are without exception the best made in the United States.

The "MODEL" (our own make) is also a first class Refrigerator, and although less in price than the "LEONARD" they are equal to the best made in Canada.

We are also agents for the "WHITE MOUNTAIN" ICE CREAM FREEZERS, which have no superior. Prices and all other information furnished to the trade on application.

**THE MCCLARY MANUFACTURING CO.**  
 183-185-187 Bannatyne Ave, Winnipeg.  
 London Toronto Montreal Vancouver St. John, N. B.

*Stephens' Inks* Spring Is Here

We can now ship ink with safety. We have a well assorted stock of Stephens' and Stalford's Inks, Mucilage and Paste.

For the coming Holidays we offer you Fireworks, Flags, Cannons, Pistols, etc. For Spring—Tops, Marbles, Skip Ropes, Express Wagons, Croquet, etc. In Season—Moth Bags—two sizes.

Your valued orders solicited.

**THE CONSOLIDATED STATIONERY CO. Ltd.**  
 McDERMOTT AVENUE, WINNIPEG

# Hotel Ireland

**RATES:**  
**\$2.00 to \$4.00**  
**PER DAY**

**SECOND TO NOTHING  
 IN CANADA**

*The Palace Family  
 and Commercial Hotel*

W. D. DOUGLAS  
 Manager

City Hall Square, Winnipeg

### Before You Order

Your Spring and Winter Underwear give our travellers a chance to show you the best selling lines in the market. Ladies', Men's, Boys' and Girls' full-fashioned Scotch Knit Underclothing made in Merino, Natural, Gauze, Silk and Wool. All wool, in light and heavy weights, for spring, fall and winter. All our full fashioned goods bear this label

**WARRANTED  
 TURNBULL'S**

Ladies', Children's and Infants' Perfect Fitting, Elastic Ribbed Vests, Drawers, Union Suits in white, natural, black and scarlet. Ankle and Knee Black Tights, Infants Anti-Grippe and Roller Bands.

### THE C. TURNBULL CO. LIMITED

J. M. COOMBS  
 Winnipeg

JOS. W. MAY  
 6 Bastion Square, Victoria, B.C.

# TREES THAT GROW

**WRITE AT ONCE FOR SPRING  
 1902 CATALOGUE**

DO NOT ORDER FROM OLD EDITIONS

Fruit trees, small fruits, evergreens and deciduous windbreak stock, ornamental trees, shrubs and plants, house plants and foliage plants for the lawn—We offer in these lines the most complete assortment in the west. And varieties that we have been testing these here in Minnesota for over 30 years and catalogue only those that are best adapted to Northern culture.

**SPECIALTIES**—Okabena apple, Lyman's Prolific crab apple, Aldin and Burries plum, Compass cherry, North Star Currant, Red Jack-et gooseberry.

**THE JEWELL NURSERY CO., Lake City, Minn.**  
 Established 1888. 1,000 Acres. Capital \$100,000.

# LUMBER Telephone 777

Call and see my fine stock of SPRUCE, also PINE, FIR, CEDAR, etc. Bottom prices

**JNO. M. CHISHOLM**  
 General Manager  
 Formerly Mgr. Rat Portage Lumber Co.

**YARD:**  
 Cor. Princess and Fonseca Sts., Winnipeg  
 Formerly British Columbia T. & C. Co. Yard.

**J. D. McARTHUR**

**STATISTICAL WHEAT REPORT.**

**WHEAT IN CANADA.**

Stocks of wheat in Canada at principal points of accumulation are reported as follows:

Montreal	77,000
Toronto	75,000
Port Huron, Ont.	75,000
Coburn, Que.	75,000
Kingston	35,000
Fort William, Port Arthur and Sault Ste. Marie	345,000
Winnipeg	300,000
Manitoba elevators	12,000,000
Total	15,000,000
Total previous week	15,000,000
Total a year ago	14,600,000

**BRADSTREET'S REPORT OF STOCKS.**  
Total stocks in the United States and Canada, east of the Rocky Mountains, as reported by Bradstreet's April 12, were 79,122,000 bushels, as against 75,555,000 bushels the previous week.

Total stocks in the United States and Canada a year ago were 89,850,000 bushels, according to Bradstreet's report.

Stocks of wheat at Pacific coast ports on April 5 were 2,550,000 bushels.

**THE VISIBLE SUPPLY.**

The Chicago visible supply statement of stocks in the United States and Canada, east of the Rocky Mountains, for the week ending April 12, shows a decrease, being a decrease of 2,370,000 bushels for the week. A year ago the visible supply was 4,588,000 bushels, two years ago 3,514,000 bushels, three years ago 13,000 bushels, four years ago 2,914,000 bushels, five years ago 36,200 bushels.

**STOCKS OF OATS AND CORN.**

The visible supply of oats in the United States and Canada, east of the Rocky Mountains is 2,174,000 bushels, compared with 30,910,000 bushels a year ago. The visible supply of corn is 2,146,000 bushels, compared with 28,820,000 bushels a year ago, according to the Chicago statement.

**WORLD'S WHEAT STOCKS.**

Stocks of wheat in America and Europe and about for Europe April 1 each year for a series of years, were as follows: Bradstreet's report:

1902	152,000,000
1901	160,000,000
1900	160,000,000
1899	123,000,000
1898	100,000,000
1897	122,000,000
1896	157,000,000

**WHEAT MOVEMENT.**

The following table gives the receipts of wheat at the four principal United States grain wheat markets, from the beginning of the crop movement, July 1, 1901, to date, compared with the same period of last year.

This crop. Last crop.	
Minneapolis	6,128,285 6,128,285
Millwaukee	9,671,080 7,561,520
Duluth	2,342,288 2,342,288
Chicago	28,114,288 28,114,288
Total	46,255,941 44,346,381

The following table gives the receipts of wheat at the four principal United States grain wheat markets, from the beginning of the crop movement, July 1, 1901, to date, compared with the same period of last year.

This crop. Last crop.	
Toledo	6,374,988 8,691,727
St. Louis	16,439,956 19,171,717
Detroit	2,945,288 2,729,952
Kansas City	17,590,748 33,023,817
Total	43,350,980 63,617,213

**Winnipeg Prices a Year Ago.**

Following were Winnipeg prices this date last year:

Wheat Cash No. 1 hard closed at 79½c in store Fort William.

Flour—Jobbing price per sack: Patent, \$2.40; best makers, \$1.65.

Millstuffs—Bran, \$1.00 per ton; shorts, \$1.50 per ton, delivered.

Oats—Carlots on track, Alberta #1, 40c; Manitoba, 39½c.

Barley—None offering.

Corn in carlots, 60½c per bushel of 56 lbs.

Butter—Daily, 16½c; for fresh make, 16c.

Potatoes—In to retail merchants.

Eggs—100½c net for fresh stock.

Cheese—Farmers' brands on the street, 6½c per bushel.

Dressed Meats—Hog, 78½c for city dressed; country, 4c under these figures; duck, 76½c; mutton, fresh, 19½c; hogs, 76c.

Poultry—Dressed chickens, 75½c; ducks, dressed, 67c; geese, 70c; turkeys, dressed, 11½c.

Game—Nominal.

Hides—No. 1 Hides, 5c per lb.

Wool—\$6½c for unwashed fleece.

Seneca Root—2c per lb.

Baled Hay—\$9½c per ton on cars.

Live Stock—Cattle, 46½c; stockers, yearlings, 42½c; sheep, 40c; hogs, 45½c.

**Grain and Milling Notes.**

The Winnipeg Elevator Co. have finished a new elevator at Darlington, Man.

The Lake of the Woods Milling Company is erecting a 30,000 bushel elevator at Melan station, Assn.

The Ouelive Co. made a shipment this week of 5,000 barrels of flour to the West Indies and a train load to South Africa.

The Winnipeg Elevator Company is erecting a 30,000 bushel elevator at Crystal City. It is expected that it will be completed in about two weeks.

A farmers' elevator company has been organized at Franklin, Manitoba, and a 30,000 bushel elevator will be erected this year in time for the season's crop.

The elevators at country points throughout Manitoba and Assiniboia have been very busy lately handling wheat which had accumulated in temporary storehouses during the winter.

Elevators A and C at Fort William have been put temporarily out of use by a smash in the engine room and the blowing of a boiler under head. It will take some days to remedy the break.

The flux average of North Dakota this year will be the largest ever known. Grain men who have made trips through the state say that the farmers are preparing to sow large quantities of flux.

Very early morning a record was established at the Canadian Northern railway elevator, Fort Arthur, when 50,000 bushels of grain were loaded into the steamer Dommonica in one hour and a quarter.

The Lake of the Woods Milling Company has received an order from Australia for 31,036 sacks of flour of the blending of No. 1 and No. 2 wheat of Africa of 12,500 barrels. This is equivalent in all to 47,556 barrels.

The resignation of F. W. Thompson from the control of the Winnipeg Grain Exchange, has been accepted and W. A. Black the present local manager of the Ouelive Mills Co., Ltd., elected to fill the vacancy.

It is the intention of the Ouelive Mills Company to erect 25 elevators this season in the west, with an average capacity of 30,000 bushels. This will give them 65 elevators in all and will terminate a capacity of 3,300,000 bushels.

The Lake of the Woods Milling Company has sent a representative to South Africa to increase its trade in that far off country. Charles M. Kitchin, formerly representative of the company at Toronto, was the choice for this mission.

The troubles arising out of the grain blockade were discussed in the Territorial legislature at Regina last week, on a motion by Hon. C. H. V. Bullock that the house request the federal government to amend the Elevator Act to provide that when there is an undue spread between the street and track prices of grain, the commission or mayor order that all cars placed at such station shall be located at any elevator, the manager of which is prepared to pay the proper price, or placed at the disposal of farmers and independent buyers, to be loaded on the track.

**Freight Rates.**

A considerable quantity of Manitoba wheat has been engaged by the Canada Atlantic since our last report from Duluth to Montreal at 6c, but from Fort William, it is said no space could be had when it is shipped through to Montreal. Vessels are coming in from the Chicago port for Montreal at 5c per bushel. It is said that most of the vessel room from Duluth and Port William has been taken for the time being. There has also been some heavy grain engagements for the Boston and New York during the past few days, so that the steamship companies, who were complaining last week of not having a bushel of space left, are now pretty well filled up—Montreal Trade Bulletin.

In a speech at Ottawa on the Intercolonial Railway bill, the minister of railways, said that ultimately the Intercolonial would have to be extended westward to the "500."

**Tenders.**

Tenders will be received till 5 p. m. on Tuesday, April 20th, for the erection of a frame dwelling on River avenue by H. D. Willson.

Tenders are wanted for the erection of a brick school house at Kenos, Assn., to be in by April 30. W. A. Robinson is the secretary.

Tenders for the purchase and removal of the frame building at 508 Main street, Winnipeg, will be received on Tuesday, April 17, by W. J. Guest.

Tenders for sewer construction, macadam pavements and granolithic sidewalks, are called for by Winnipeg city council, to be in by Thursday, May 1.

Tenders will be received by J. W. Robinson of Swan River, Man., till the 17th day of May for the erection of a school house 24 ft. by 30 ft. at that place.

Tenders addressed to the chairman works committee for 20,000 feet of waterworks pipe, 44 valves and other waterworks supplies, will be received up to 8:30 p. m. on Thursday, May 1.

Tenders will be received by J. McDougall, secretary of municipality, Lower Port George, Man., until 1st of May, for supply for the current year, of spruce and tamarac 2 and 3 inch plank, pile and bridge timber.

The construction department of the C. P. R. announce that tracklaying on the Forest extension would start at once. There are 25 miles of steel to be laid there this summer.

The Canadian trade section of the London Chamber of Commerce has passed the following resolution: "That this section is convinced that Anglo-Canadian trade has materially suffered from the absence of a Dominion bankruptcy law, and urges most strenuously that the chamber should make representations to the Dominion government with a view to legislation on this subject, and should also address the boards of trade throughout the Dominion expressing the hope that they will urge on the government that matter be, if possible, considered during the next session of parliament."

**THE DOMINION ELEVATOR CO.**

LIMITED  
GRAIN EXPORTERS

OFFICE: WINNIPEG

GRAIN EXCHANGE

KIRKPATRICK & COOKSON

Montreal.

Consignments of Grain and Country Produce solicited.

P. O. B. Offers of Wheat, Barley, Oats, etc., requested.

Established 1869, Manitoba Grain Code used.

**JAS CARRUTHERS & CO.**

GRAIN EXPORTERS

MONTREAL TORONTO WINNIPEG

**The Northern Elevator Co.**

LIMITED.

GRAIN

HEAD OFFICE WINNIPEG.

BRANCH OFFICES: MONTREAL, NEW YORK, LONDON, ETC.



**WINNIPEG GRAIN AND PRODUCE EXCHANGE**  
C. A. YOUNG, President  
GEO. V. HASTINGS, CHAS. S. BELL, Vice-President. Sec'y Treas.

LICENSED AND BONDED

**THOMPSON, SONS & CO.**  
GRAIN COMMISSION MERCHANTS

All grades of Wheat, Oats and Barley handled. Best prices; prompt returns. Liberal advances on Bx L. Write for further information.

WINNIPEG.

**H. D. METCALFE**

GRAIN EXPORTER

200 GRAIN EXCHANGE WINNIPEG 10 STOCK EXCHANGE MONTREAL

Direct connection with European markets.

**THE WINNIPEG ELEVATOR CO.**

LIMITED  
GRAIN EXPORTERS

OFFICE: GRAIN EXCHANGE, WINNIPEG

**ROBT. MUIR & CO.**

GRAIN DEALERS AND MILLERS

SHIPPERS OF WHEAT, OATS, BARLEY, RYE, FLOUR, GRAIN, SUGARS, COCOA

Buy or sell on commission. Before buying or selling grain in car lots, write us for quotations. Advances made on consignments. Licensed and bonded.

WINNIPEG, MAN.

**M. McLAUGHLIN & CO.**

ROYAL DOMINION MILLS, TORONTO.

CAPACITY, 100 BBL'S DAILY

MILLERS OF

No. 1 Manitoba Hard Wheat

**CANADIAN PACIFIC**

"THE" ROUTE

TO

**Australasia**

AND

**The Orient**

CANADA'S SCENIC ROUTE.

Travel by the C. P. R. and be assured of SOLID COMFORT.

FIRST CLASS C. P. R. SLEEPERS on all through trains.

**THROUGH TOURIST SLEEPERS**

THE BEST

Tourist Rates quoted to all Points EAST, WEST, SOUTH,

THE OLD COUNTRY,

THE ORIENT,

THE ANTIPODES.

Those desiring information in regard to any part of the world reached by the C. P. R. or its connections are requested to apply to any C. P. R. representative or to

**C. E. McPHERSON,**  
General Passenger Agent,  
Winnipeg, Man.

**WANTED**

Local agents or travelling salesmen for Manitoba and the Territories, to handle a complete line of nursery stock, fruit trees, ornamental trees, seed potatoes, small fruits, etc. We grow special lines of heavy Russian stock, adapted to cold climates. Sample cases, etc., supplied free. For terms apply now.

**PELHAM NURSERY COMPANY,**  
Toronto, Ont.

N. B.—Special inducements to farmers who can only work part time at the business. Handmade catalogues free on application, which gives valuable information concerning ornamental and fruit stock.  
P. N. Co.



**THROUGH TICKETS**  
TO ALL PORTS.

**EAST, SOUTH AND WEST**  
**CHEAP TICKETS TO CALIFORNIA**

With through Tourist Car, every Wednesday, via Portland and Shasta route.

**OCEAN TICKETS.**

On sale to Great Britain and the Continent; also to Atlantic ports, etc. Trains leave Winnipeg daily at 1.45 p.m., from Canadian Northern Railway station. Water street first-class equipment, including Pullman and Dining Cars. For further information call on nearest Canadian Northern Ticket Agent, or write **CHAS. E. FEE,**

Gen. Pass. & Ticket Agt., St. Paul, Minn., or—  
**H. SWINFORD,**  
Gen. Agt., 291 Main Street, Winnipeg.

**ATLANTIC STEAMSHIP LINES.**

Alban Line—From St. John.  
Numidian..... April 19  
Ionian..... April 26  
Alban Line—From Halifax.  
Numidian..... April 21  
Ionian..... April 28  
Dominion Line—From Portland.  
Colonial..... April 19  
California..... May 3  
White Star Line—From New York.  
Germanic..... April 16  
Teutonic..... April 23  
Cunard Line—From New York.  
Saxonia..... April 22  
Campania..... April 26  
Cunard Line—From Boston.  
Ivernia..... April 25  
Vivian..... May 3  
Dominion Line—From Boston.  
Commonwealth..... April 23  
American Line—New York.  
St. Paul..... April 23  
St. Louis..... April 30  
Red Star Line—From New York.  
Kempington..... April 22  
Zeeland..... April 29  
Alban State Line—From New York.  
Laurentian..... April 29  
Mongolian..... May 14  
Anchor Line—From New York.  
Anchoria..... April 19  
Furnessia..... May 23

RATES—Cabin, \$50, \$55, \$60, \$70, \$80 and upwards. Second Cabin, \$25, \$27.50, \$30 and upwards. Steerage, \$24.50, \$25.50, \$26.  
Passengers ticketed through to all points in Great Britain and Ireland, and at specially low rates to all parts of the European continent. Prepaid passage arranged from all points. Apply to the nearest steamship or railway ticket agent, or to Winnipeg, Man.

**PLEASE NOTIFY.**

Subscribers to The Commercial are requested to notify the office of any irregularity in the receipt of their paper.

**RAW FURS**

**THERE'S MONEY IN IT!**  
SHIP YOUR  
**FURS**  
**HIDES** DEERSKINS and SEWEA  
—TO—  
**McMILLAN FUR & WOOL CO.**  
MINNEAPOLIS, MINN.  
High Prices. Prompt Returns.  
WRITE FOR PRICE CIRCULARS.



**Money For You**

The man who sells, and the man who smokes our cigars makes money. They are good cigars to sell, and good cigars to smoke—as they contain the best Havana tobacco that experience and money can select. They are mild, fragrant, pure. Our leading brands:

**"FLOR DE TOM LEE" "The T.L."**  
**"LEE'S PREMIER" "ROSA LINDA"**  
**"MAGNIFICOS" "LEE'S PERFECTOS"**

They're doing business daily at all good cigar stands.

**WESTERN CIGAR FACTORY**

**T. LEE, Prop. WINNIPEG**

We solicit repairs of any Electrical Apparatus.

**The Western Electric Co.**

Private telephone systems and wiring. Bells and electro-medical supplies.

EAST PORTAGE AVE. (Near Main St.)  
WINNIPEG, MAN.

The only up-to-date manufacturers in Western Canada.

**RUBBER STAMPS**

AND SUPPLIES

**THE MOORE PRINTING CO. LTD.**  
219 McDermott St., Winnipeg

**The British Columbia Mills**  
**Timber and Trading Co.**

MANUFACTURERS OF HEAD OFFICE, VANCOUVER, B.C.

**FIR AND CEDAR LUMBER**

SHINGLES, DOORS, WINDOWS, ETC.

Winnipeg Office: JAMES A. OVAS, Manager

Mills:  
HASTINGS SAW MILL, Vancouver  
ROYAL CITY MILL, "  
ROYAL CITY MILL, New Westminster  
MODDYVILLE MILL, Burrard Inlet

EVERYTHING IN  
**BROOMS**  
**BRUSHES**  
**BASKETS**

From the cheapest that's good to the best that's made.

**WALTER WOODS & CO.**

WHOLESALE WOODENWARE

147 Bannatyne Ave., Winnipeg.

# Have You Bought

Your Wagons,  
Toy Carts,  
Velocipedes,  
Baby Carriages

We have a big assortment of these in stock. We are also carrying a large range of Hammocks. Catalogue, with best prices on application.

We have just received a large range of Coronation Tablets, Exercise and Scribbling Books and Papereries. These are right up-to-date and you should have some.

**CLARK BROS. & CO. P. O. BOX 1240 WINNIPEG**

## THE IMPERIAL

FRUIT AND  
PRODUCE COY  
WHOLESALE

We handle all kinds of green fruits and are prepared to fill your orders for same promptly.

We also buy or handle on commission everything in the way of country produce at highest cash prices and lowest rates of commission.

Settlements made promptly.

880 Elgin Avenue, Winnipeg.

THE EVER INCREASING DEMAND FOR

# COCKSHUTT PLOWS

has necessitated larger manufacturing facilities from year to year.

We are now pleased to announce that during the present season extensive additions will be made to our Factory and Plant, and that our present facilities will be increased by 100 per cent.

HAVE YOU SECURED THE AGENCY FOR THE CELEBRATED COCKSHUTT PLOWS?

If so, you are assured of the Spring Plow Trade in your Territory.

**COCKSHUTT PLOW COMPANY, LTD., WINNIPEG**

Factory: BRANTFORD

## W. W. Ogilvie Milling Co.

— BY —

ROYAL WARRANT

### MILLERS

— TO —

H. R. H. THE

### PRINCE OF WALES

# Grain Tickets

AND OTHER STATIONERY.

**SEND FOR SAMPLES**

**THE FRANKLIN PRESS Ltd. Opp. Grain Exchange, Winnipeg**

**"REFINED ALE"**

(Which Sparkles Like Champagne.)

**"EXTRA STOUT"**

and

**"REDWOOD LAGER"**

Are what the people are using.

**WHY?**

BECAUSE they are always marketed in PRIME CONDITION.  
BECAUSE THEY ARE THOROUGHLY MATURED in wood.  
BECAUSE all ingredients are PURE.  
BECAUSE THE UTMOST CLEANLINESS is observed in every process of manufacture.

Order from your wholesale dealer or direct from Redwood factories, Winnipeg.

**E. L. DREWRY** Manufacturer and Importer, Winnipeg.

**SADLER & HAWORTH**

Tanners and Manufacturers of

## Oak Leather Belting

Montreal and Toronto.

JOHN A. CARRUTHERS, Selling Agent, 120 King Street, Winnipeg, Manitoba.

**WM. FERGUSON**

WHOLESALE

**Wines, Liquor and Cigars**

8th STREET, BRANDON

**IMPORTANT . . .**

My travellers are now on the road with Spring and Fall Samples.

It will be to the interest of Merchants to defer buying until they see my Samples.

## THOS. CLEARHURST

BROCKVILLE, ONT.