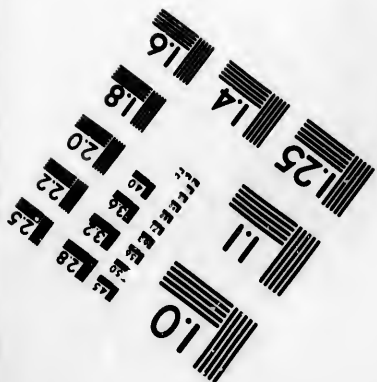
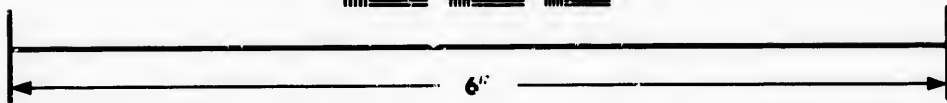
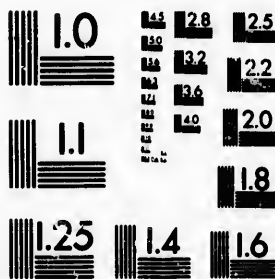


**IMAGE EVALUATION  
TEST TARGET (MT-3)**



**Photographic  
Sciences  
Corporation**

23 WEST MAIN STREET  
WEBSTER, N.Y. 14580  
(716) 872-4503

1.8  
2.0  
2.2  
2.5  
2.8  
3.2  
3.6  
4.0

**CIHM/ICMH  
Microfiche  
Series.**

**CIHM/ICMH  
Collection de  
microfiches.**



**Canadian Institute for Historical Microreproductions / Institut canadien de microreproductions historiques**

1.0  
1.8  
2.0  
2.2  
2.5  
2.8  
3.2  
3.6  
4.0

**© 1982**

Technical and Bibliographic Notes/Notes techniques et bibliographiques

The Institute has attempted to obtain the best original copy available for filming. Features of this copy which may be bibliographically unique, which may alter any of the images in the reproduction, or which may significantly change the usual method of filming, are checked below.

L'Institut a microfilmé le meilleur exemplaire qu'il lui a été possible de se procurer. Les détails de cet exemplaire qui sont peut-être uniques du point de vue bibliographique, qui peuvent modifier une image reproduite, ou qui peuvent exiger une modification dans la méthode normale de filmage sont indiqués ci-dessous.

- Coloured covers/  
Couverture de couleur
- Covers damaged/  
Couverture endommagée
- Covers restored and/or laminated/  
Couverture restaurée et/ou pelliculée
- Cover title missing/  
Le titre de couverture manque
- Coloured maps/  
Cartes géographiques en couleur
- Coloured ink (i.e. other than blue or black)/  
Encre de couleur (i.e. autre que bleue ou noire)
- Coloured plates and/or illustrations/  
Planches et/ou illustrations en couleur
- Bound with other material/  
Relié avec d'autres documents
- Tight binding may cause shadows or distortion along interior margin/  
La reliure serrée peut causer de l'ombre ou de la distortion le long de la marge intérieure
- Blank leaves added during restoration may appear within the text. Whenever possible, these have been omitted from filming/  
Il se peut que certaines pages blanches ajoutées lors d'une restauration apparaissent dans le texte, mais, lorsque cela était possible, ces pages n'ont pas été filmées.
- Additional comments:/  
Commentaires supplémentaires:

- Coloured pages/  
Pages de couleur
- Pages damaged/  
Pages endommagées
- Pages restored and/or laminated/  
Pages restaurées et/ou pelliculées
- Pages discoloured, stained or foxed/  
Pages décolorées, tachetées ou piquées
- Pages detached/  
Pages détachées
- Showthrough/  
Transparence
- Quality of print varies/  
Qualité inégale de l'impression
- Includes supplementary material/  
Comprend du matériel supplémentaire
- Only edition available/  
Seule édition disponible
- Pages wholly or partially obscured by errata slips, tissues, etc., have been refilmed to ensure the best possible image/  
Les pages totalement ou partiellement obscurcies par un feuillet d'errata, une pelure, etc., ont été filmées à nouveau de façon à obtenir la meilleure image possible.

This item is filmed at the reduction ratio checked below/  
Ce document est filmé au taux de réduction indiqué ci-dessous.

10X	12X	14X	16X	18X	20X	22X	24X	26X	28X	30X	32X
						✓					

The copy filmed here has been reproduced thanks to the generosity of:

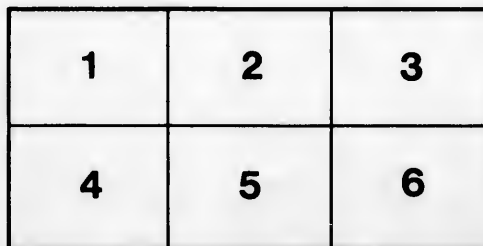
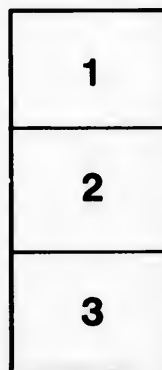
Thomas Fisher Rare Book Library,  
University of Toronto Library

The images appearing here are the best quality possible considering the condition and legibility of the original copy and in keeping with the filming contract specifications.

Original copies in printed paper covers are filmed beginning with the front cover and ending on the last page with a printed or illustrated impression, or the back cover when appropriate. All other original copies are filmed beginning on the first page with a printed or illustrated impression, and ending on the last page with a printed or illustrated impression.

The last recorded frame on each microfiche shall contain the symbol  $\rightarrow$  (meaning "CONTINUED"), or the symbol  $\nabla$  (meaning "END"), whichever applies.

Maps, plates, charts, etc., may be filmed at different reduction ratios. Those too large to be entirely included in one exposure are filmed beginning in the upper left hand corner, left to right and top to bottom, as many frames as required. The following diagrams illustrate the method:



L'exemplaire filmé fut reproduit grâce à la générosité de:

Thomas Fisher Rare Book Library,  
University of Toronto Library

Les images suivantes ont été reproduites avec le plus grand soin, compte tenu de la condition et de la netteté de l'exemplaire filmé, et en conformité avec les conditions du contrat de filmage.

Les exemplaires originaux dont la couverture en papier est imprimée sont filmés en commençant par le premier plat et en terminant soit par la dernière page qui comporte une empreinte d'impression ou d'illustration, soit par le second plat, selon le cas. Tous les autres exemplaires originaux sont filmés en commençant par la première page qui comporte une empreinte d'impression ou d'illustration et en terminant par la dernière page qui comporte une telle empreinte.

Un des symboles suivants apparaîtra sur la dernière image de chaque microfiche, selon le cas: le symbole  $\rightarrow$  signifie "A SUIVRE", le symbole  $\nabla$  signifie "FIN".

Les cartes, planches, tableaux, etc., peuvent être filmés à des taux de réduction différents. Lorsque le document est trop grand pour être reproduit en un seul cliché, il est filmé à partir de l'angle supérieur gauche, de gauche à droite, et de haut en bas, en prenant le nombre d'images nécessaire. Les diagrammes suivants illustrent la méthode.

# Fishing

Canadian Historical Society  
1902  
TORONTO.

and

# Shooting

...In  
**Quebec**



A KIPPEWA MOOSE

Issued by the

**CANADIAN PACIFIC**  
**RAILWAY CO.**

June  
1900



# Canadian Pacific Railway Co.'s .... Hotels

While the perfect sleeping and dining car service of the Canadian Pacific Railway provides every comfort and luxury for travellers making the continuous overland through trip, it has been found necessary to provide places at the principal points of interest among the mountains where tourists and others might explore and enjoy the magnificent scenery.

The Company has erected at convenient points hotels, which, by their special excellence, add another to the many elements of superiority for which the Railway is famous.

## THE CHATEAU FRONTENAC—QUEBEC.

the quaintest and historically the most interesting city in America, is one of the finest hotels on the continent. It occupies a commanding position overlooking the St. Lawrence, its site being, perhaps, the grandest in the world. The Chateau Frontenac was erected at a cost of over a million dollars.

Rates, \$4.00 per day and upwards, with special arrangements for large parties and those making prolonged visits.

Address, "MANAGER, Chateau Frontenac, Quebec, Canada."

## PLACE VIGER HOTEL—MONTREAL.

a handsome new structure in which are combined a hotel and passenger station. The building which faces Place Viger is most elaborately furnished and modernly appointed, the general style and elegance characterizing the Chateau Frontenac, at Quebec, being followed.

This hotel is operated on the European plan: rooms \$1.00 per day and upwards, large double rooms \$2.00, and with baths \$2.00 to \$2.50 per day.

Address, "MANAGER, Place Viger Hotel, Montreal, Canada."

## THE KAMINISTQUIA—FORT WILLIAM, ONT..

the western terminus of the Lake Route and of the Eastern Division of the C. P. R.

Rates, \$2.50 per day and upwards, with special rates to large parties or those making an extended visit.

Address, "MANAGER, The Kaministiquia Hotel, Fort William, Ont."

## BANFF HOT SPRINGS HOTEL—BANFF, ALBA..

in the Canadian National Park, on the eastern slope of the Rocky Mountains, is placed on a high mountain promontory, 4,500 feet above the sea level, at the confluence of the Bow and Spray Rivers, and is a large and handsome structure, with every convenience that modern ingenuity can suggest, and costing over a quarter of a million dollars. Open from 15th May to 1st October.

Rates, \$3.00 per day and upwards, according to the rooms. Special rates by the week or month will be given on application to

"MANAGER, Banff Springs Hotel, Banff, Alberta, N.W.T."

## THE LAKE LOUISE CHALET—LAOAN, ALBA.

This quiet resting place in the mountains is situated on the margin of Lake Louise, about two and a-half miles distant from the station at Laggan, from which there is a good carriage drive, and forms a convenient base from which to explore the Lakes in the Clouds. Open from about 15th June to 15th September only. Apply to

"MANAGER, Banff Springs Hotel, Banff, Alberta, N.W.T."

## MOUNT STEPHEN HOUSE—FIELD, B.C..

is a pretty chalet-like hotel, fifty miles west of Banff in Kicking Horse Canon, at the base of Mount Stephen—the chief peak of the Rockies, towering 3,000 feet above. This is a favorite place for tourists, mountain climbers and artists, and sport is plentiful, Emerald Lake, seven miles away, being a capital fishing water.

The rates are \$3.00 per day, with special arrangements for parties stopping a week or longer. Apply to "MANAGER, Mount Stephen House, Field, B.C."

## GLACIER HOUSE—GLACIER, B.C..

is situated in the heart of the Selkirk within thirty minutes' walk of the Great Glacier, which covers an area of about thirty-eight square miles.

The hotel, which has recently been enlarged to accommodate the ever-increasing travel, is in a beautiful amphitheatre surrounded by lofty mountains.

The rates are \$3.00 per day, with special arrangements for parties stopping a week or longer. Address, "MANAGER, Glacier House, Glacier, B.C."

## HOTEL REVELSTOKE—REVELSTOKE, B.C..

the gateway to the West Kootenay gold fields. This fine new structure, picture-squely located in the basin between the Selkirk and Gold Ranges, is handsomely appointed and complete in all details found in leading modern hotels.

Rates, \$3.00 per day and upwards. Apply to "MANAGER, Hotel Revelstoke, Revelstoke, B.C."

## THE FRASER CANON HOUSE—NORTH BEND, B.C..

130 miles east of Vancouver, is situated on the Fraser River and is managed with the same attention to the comfort of its patrons that pervades all branches of the Company's service. The scenery along the Fraser River is well described as "ferocious," and the hotel is a comfortable base from which to explore.

Rates, \$3.00 per day, with special arrangements for parties stopping a week or longer. Address, "MANAGER, Fraser Canon House, North Bend B.C."

## HOTEL VANCOUVER—VANCOUVER, B.C..

the Pacific Coast terminus of the Railway, is a magnificent hotel designed to accommodate the large commercial business of the city, as well as the great number of tourists who always find it profitable and interesting to make here a stop of a day or longer.

Regular rates, \$3.00 per day and upwards, with special terms for prolonged visits. Address,

"MANAGER, Hotel Vancouver, Vancouver, B.C."

# Fishing and Shooting

IN THE

PROVINCE OF QUEBEC

REACHED BY THE LINES  
OF THE

## CANADIAN PACIFIC RAILWAY

---

FOURTH EDITION

---

Compiled from information furnished chiefly by N. E. Cormier,  
Provincial Game Warden and Fishery Overseer for  
the Province of Quebec, Avimer East, Que.



ISSUED BY THE  
PASSENGER TRAFFIC DEPT.  
CANADIAN PACIFIC RAILWAY  
MONTREAL, JUNE, 1900.

# Index

to principal

## Lakes, Rivers, etc.

---

---

### Lakes

	PAGE
Barriere .....	10, 24
Baskatong .....	17, 24
Des Quinze .....	24
Expanse .....	24
Grand Victoria .....	18
Kakebonga .....	24
Kippewa .....	20
Maskinonge .....	6
Mistassini .....	10
Mastigouche .....	6
Ostaboining .....	25
St. John .....	11
Temiskaming .....	21

### Rivers

Bear .....	18
Black .....	18
Coulonge .....	18
Du Loup .....	7
Du Moine .....	18
Fraser .....	25
Gatineau .....	17
Kippewa .....	22
Lievre .....	17
Maganasipi .....	20, 25
Mattawin .....	7
Ottawa (lower) .....	15
Ottawa (upper) .....	17
Rouge .....	14
Schyan .....	18
St. Maurice .....	7

### Miscellaneous

Chateau Frontenac .....	10
Labelle Lake District .....	11
Laurentian Mountains .....	11
Place Viger Hotel .....	5
Ste. Agathe des Monts .....	13

 See Special Notice, page 27.

II  
of t  
or a  
and  
easy  
New  
Can  
the  
the  
deer  
Que  
but  
by n  
part  
the  
from  
may  
cons  
and  
one  
of m  
less  
wild  
ther  
well  
othe  
spor  
spor  
they  
zatic  
cam  
in m  
secu  
?  
kind  
prac  
fishi  
the  
and  
C  
and  
of "  
dian



# Fishing and Shooting

In Canada....



IN the variety and plenty of sport obtainable, at the minimum of expense and trouble, Canada has no rival; and it so happens that the best game districts of the Dominion are either in the immediate vicinity of, or at no great distance from, the Canadian Pacific Railway, and beyond the Dominion the road and its connections afford easy access for the angler and hunter to highly-favored places. Newfoundland is now brought within six hours' sail of the Canadian railways, and in the States contiguous to Canada the Canadian Pacific Railway and its connecting lines traverse the best fields for sport. The heart of the moose, caribou and deer country of New Brunswick and Eastern and Northern Quebec—country which is not only famed for its big game, but which abounds in trout-streams and small lakes inhabited by many varieties of fish—is penetrated; and for the greater part of the way between St. John, N.B., and Vancouver, on the Pacific, the Canadian Pacific passes through territory from which, in season, no sportsman, however untried he may be, should return empty-handed. There is necessarily considerable difference between the resources of one field and another. Not merely is one locality more promising of one kind of game than another—one good for caribou, but scant of moose; one well streaked with trout-streams, but affording less excellent bass fishing; one unsurpassed for geese and other wild fowl, but not so good as other localities for grouse. But there are some which combine many kinds of game, and will well repay the organization of a camping party, while some other places may be shot over during the day, permitting the sportsman to return to his temporary home at night. Some sportsmen, too, are not content to "rough it," however richly they may be rewarded, but require all the accessories of civilization that can reasonably be obtained; others regard the camp, the occasional inconveniences, and the complete change in mode of life as additional attractions to the search for and securing of their game.

The Canadian Pacific Railway traverses country of all kinds, and has opened up to sportsmen vast tracts hitherto practically inaccessible, and, while reaching shooting and fishing grounds hitherto unworked, conveys its passengers to the field of their operations in more than ordinary comfort and luxury.

Game laws are in force in the provinces of the Dominion, and will be found in a condensed form in the regular editions of "Fishing and Shooting," a pamphlet issued by the Canadian Pacific Railway Company.

PAGE  
10, 24  
17, 24  
24  
24  
18  
24  
20  
6  
10  
6  
25  
11  
21

18  
18  
18  
7  
18  
25  
17  
22  
17  
20, 25  
7  
15  
17  
14  
18  
7

10  
11  
11  
5  
13



"IN THE KIPPEWA COUNTRY."

G

A

world  
whol  
as ye  
of ac  
whet  
arran  
little  
may  
or sm  
trout  
labyr

I  
to m  
game  
of al  
give  
sport  
will l

T  
whic  
shoot  
of Ca  
leadi  
Pacif  
form  
Amer  
other  
their

M  
fcent  
oper  
amon

T  
to ve

# Quebec

The Great .....

## Game Land



**A**LMOST the entire Province of Quebec is an intricate network of waterways which not only form, amidst delightful scenes, the grandest canoe routes of the world, but give easy means of communication throughout the whole territory. The most remote fields, parts of which are as yet undisturbed as they were centuries ago, are not difficult of access. Railways lead to their very portals, where visitors, whether anglers, hunters or canoe men, are enabled to arrange for guides, camping outfits, etc., at comparatively little expense. It is possible—whatever the enthusiast's desires may be—whether for the kingly moose, the caribou, the deer or smaller game, whether from the lordly salmon to the brook trout—to have them fully gratified in this great domain whose labyrinth of woods and waters afford the most glorious outings.

It would be impossible within the limits of this pamphlet to mention in detail all the different localities where fish and game are plentiful, for that would include the particularizing of almost countless places, but a perusal of these pages will give the intending visitor a fair idea of the best regions for sport, how they may be reached, and other information that will be found useful.

### A CONVENIENT STARTING POINT.

The city of Montreal is the most convenient centre from which visiting sportsmen can reach the various fishing and shooting districts of Quebec. It is the commercial metropolis of Canada, a city of over 300,000 people, where converge the leading Canadian railways, principal of which is the Canadian Pacific, whose lines, stretching from the Atlantic to the Pacific, form the longest continuous railway in the world, and several American railways—from New York, Boston, Portland and other cities of the United States—find entrance to the city over their tracks.

Montreal has unexcelled hotel accommodation—the magnificent new Place Viger Hotel at the East End, owned and operated by the Canadian Pacific Railway Company, ranking amongst the leading hotels of America.

The angler need scarcely leave the city, if not inclined to venture into the wilderness or away from the enjoyments

of the accessories of civilization. The rivers forming the island on which Montreal stands furnish very fair sport. In the St. Lawrence, both above and below the Lachine Rapids and the Back River on the other side of the island, are to be found bass, maskinonge, doré and pike, and further away, and yet within an hour's ride by train, are other places to which reference is made in other pages.

### THE MASTIGOUCHE LAKES.

Some of the best fishing waters are along the north shore of the St. Lawrence, and amongst these are the noted Mastigouche Lakes. They are reached from Montreal by the Canadian Pacific Railway to Joliette, 55 miles, and the St. Gabriel de Brandon branch to St. Gabriel de Brandon, 22 miles further north. The village, which contains two



CANADIAN PACIFIC RAILWAY COMPANY'S PLACE VIGER HOTEL AND STATION, MONTREAL.

hotels, is located on the shores of Lake Maskinonge, a large and pretty sheet of water. Maskinonge are large and plentiful in the lake, some of them weighing as high as 65 lbs., and generally ranging from 15 to 30 lbs., and within a radius of ten miles of Lake Maskinonge are a number of smaller lakes and trout streams which afford excellent fishing.

Beyond these are the famed Mastigouche lakes, fifty in number. The majority of these being leased to the Mastigouche Fishing Club, which has established a club house on Lake Simeon, are not available to the general public, but visiting sportsmen, properly introduced, have little difficulty in obtaining the privileges of membership either here or at the club houses of similar organizations in other parts of the Province. These lakes are reached from St. Gabriel de Brandon by conveyance over a 15-mile road which follows

the M  
well s  
deer ;  
ful, a  
shoot  
To  
miles  
by wa  
angler  
are a  
Servic  
cates  
and g  
B  
contin  
Saint  
River  
and fl  
the fa  
from  
where  
and p  
down  
the S  
river.  
Mutt  
accom  
days'  
wood  
ing on  
On th  
miles  
cator  
B  
east o  
Loup  
lakes  
ville,  
three  
are su  
A  
statio  
which  
T  
gives  
labyr  
has a  
tribut  
city o  
ing fr  
receiv  
with  
coars

## FISHING AND SHOOTING IN PROVINCE OF QUEBEC

the Mastigouche River. The country is well timbered and well settled, and throughout the district there are numerous deer; bears are also occasionally met, rabbits are plentiful, and there is capital partridge and fairly good duck shooting.

To the west and southwest of these, however, and only 20 miles from St. Gabriel de Brandon, which distance is covered by waggon road, are other lakes equally as promising to the angler. In the townships of Provost, Masson and Brassard are a series of lakes—St. Louis, Oboupsawm, St. Gregoire, St. Servius, Kanker, etc., which might almost be taken for duplicates of the Mastigouche chain, and these all teem with red and grey trout, as well as with other species.

Beyond these lakes is another region, or rather a continuation of the same region, of which St. Michel des Saints is the last outpost. It is situated on the Mattawin River, which rises in Lake Cyprès, 20 miles to the southwest, and flows easterly into the St. Maurice. On Lac des Pins is the farm of the Oblat Fathers (La Ferme des Peres), six miles from St. Michel des Saints—an excellent stopping place, where canoes and guides can be obtained. There is a fine and picturesque canoe route from St. Michel des Saints down the Mattawin, and with a few easy portages the St. Maurice to the east can be reached by that river. From La Ferme des Peres to the mouth of the Mattawin, near which is the Baptiste Farm, where good accommodation and supplies can be had, is a three or four days' journey, the distance being about 75 miles. This wooded region abounds in large and small game, and the fishing on the Mattawin and its numerous tributaries is capital. On the St. Maurice steamer can be taken to Grandes Piles 25 miles south, and from there the C.P.R. gives quick communication with Montreal and Quebec.

By branching off at the four-mile Allard portage, 25 miles east of La Ferme des Peres, the headwaters of the Rivière du Loup are reached, and by different routes through a chain of lakes and fishing streams one can reach the C.P.R. at Louiseville, 74 miles from Montreal. This trip need occupy but three or four days, but the opportunities for sport en route are sufficient to induce its prolongation.

At a distance of about 23 miles from St. Barthelemi station (10 miles west of Louiseville), are also fishing waters which the visitor will find worth a trial.

### THE ST. MAURICE.

The whole district drained by the St. Maurice River, which gives its name to all this territory, and its tributaries is a vast labyrinth of lakes and connecting streams. The St. Maurice has a length of nearly 400 miles, being one of the largest tributaries of the St. Lawrence, into which it empties at the city of Three Rivers. There are several hundred lakes ranging from half a mile to 12 miles in area whose waters are received by the St. Maurice, and many of these are stocked with the largest and gamest speckled trout, while in all the coarser species can be caught. In certain portions game is



MASKINONGE.

abun  
Cana  
Bran  
O  
a ple  
Lac a  
the S  
of tro  
F  
to La  
there  
The  
48 m  
are  
whic  
both  
mod  
up t  
Gran  
iscan  
east,  
Its ch

caril  
racc  
in t  
grea  
7  
whic  
the c  
from  
Gati  
rou  
of O  
othe  
Bar  
Tem  
the

abundant. This section is reached from Three Rivers, on the Canadian Pacific, 95 miles from Montreal, where the Piles Branch is taken to Grandes Piles, 30 miles.

One need not go far up the St. Maurice for good sport, for a pleasant drive from Three Rivers, or a shorter one from Lac a la Tortue, a station on the branch railway, takes one to the Shawenagan river, which usually furnishes heavy strings of trout, some of which are of good size.

From Grandes Piles comfortable steamers run regularly to La Tuque, 68 miles north, and in the intervening distance there are many places at which capital sport can be secured. The Mattawin Farm and Rivière aux Rats Farm (the latter 48 miles from Grandes Piles) are excellent centres from which to explore the country, both furnishing good accommodation. Forty-two miles up the St. Maurice from Grandes Piles, the Little Batiscan country, lying to the east, is entered. Its chief lakes are



Little Batiscan, Dumonty, Gillies, the two Dawsons, Brochet, La Croche, Caribou, Vasalle, and there are numerous others which are as yet unnamed, but no less attractive to the angler. This is a region for moose,

caribou and deer, as well as for mink, otter, beaver, martin, raccoon, foxes and for duck, partridge and wild geese, and in the scarcely disturbed solitudes further north even greater opportunities for the gun and rod will be found.

The St. Maurice offers numerous attractive canoe routes, which by varied courses traverse widely separated portions of the country. This river can be followed to its head waters from which short portages lead to the upper waters of the Gatineau and the Ottawa rivers to the west. The former route by canoe can be terminated at Gracefield, 61 miles north of Ottawa city, with which it is connected by rail; and the other (via Jean de Terre, Desert River, the Tomasine, Lac Barriere, Grand Lac Victoria and Lake Temiskaming) at Temiskaming, where a branch railway leads to Mattawa, on the main line of the C.P.R., 318 miles from Montreal. Either

## FISHING AND SHOOTING IN PROVINCE OF QUEBEC

of these trips should occupy four or five weeks if taken leisurely, but could be made in probably three weeks without any undue haste being required.

A shorter trip is to leave the St. Maurice at the Manouan, and proceeding by Lac Wabashontyunk and Nemicacling to the Forks of the Lievre, follow down that river to Buckingham, on the Lower Ottawa, between Ottawa City and Montreal, part of this trip being made by steamer. A variation of this trip can also be made by Big Trout River and Lake (Mejomangoos) and down the Lievre to Buckingham. This trip need occupy little more than a fortnight.

Instead of going up the Manouan, the St. Maurice can be followed to Lac Asiniwan and Lac des Battures de Sable, and thence to Lac Au Male, from which both the Ottawa and the Gatineau and Lievre can be reached, through one of the finest game countries on the continent, in which there is also unsurpassed fishing.

If a more extended trip is desired—one reaching into the farther north whose solitudes are as yet almost unbroken, there are splendid routes leading by way of Lakes Obutiagama and Chibiogouma to the remote Mistassini Lake, the great inland sea of which so little is known, except that around and about it game both large and small abounds.

By other routes, Lake St. John to the east can be reached either by the Askitiche and Nicabeau and the Chamouchouan River; by the Little Bostonnais River; by the Big Bostonnais River, and by La Croche River, and then from lake to lake.

Along the St. Maurice and its tributaries are scattered a number of settlers, and the Hudson's Bay Company has established posts at La Tuque, at Cocococache, 42 miles distant from La Tuque; Weymontaching, 40 miles from Cocococache; Kickendatch, 60 miles further, and Manowan, 65 miles from Weymontachaing.

The routes mentioned above do not include all that can be profitably followed, for diversions can be made by countless streams, each with its own characteristic features of scenery and sport.

### ABOUT QUEBEC.

Before reaching Quebec one can find good trout fishing by a fifteen-mile drive up Portneuf River from Portneuf station (30 miles from Quebec). The trout weigh from  $\frac{3}{4}$  lb. to 2 $\frac{1}{2}$  lbs., the majority ranging from the former weight to 1 $\frac{1}{4}$  lbs.

There are some good points for the angler immediately around the City of Quebec, where the Chateau Frontenac, the famous \$1,000,000 hotel, erected and operated by the Canadian Pacific Railway Company, makes convenient and luxurious headquarters for the tourist. The St. Charles River is a famous salmon stream as high up as the Lorette Falls, nine miles from its mouth, and in St. Charles lakes are lake and brook trout. Lake Beauport, 13 miles from the city, is a favorite resort for local anglers, and in the neighborhood are other waters, directions to which and their capabilities for providing sport can be learned in the city.



Directly north of the city, 190 miles by the Quebec & Lake St. John Railway, is Lake St. John, the home of the ouananiche. Marvellous tales have been told of this species, which is found in but few waters, and it is admitted that they are the gamest, strongest and hardest fighting fish that ever tested skill and tackle. It would be difficult to



CHATEAU FRONTENAC, DUFFERIN TERRACE, QUEBEC.

(OPERATED BY THE CANADIAN PACIFIC RY. CO.)

imagine a more attractive centre for the canoer and the fishermen than this broad lake with its hundreds of miles of tributary rivers extending far into a great unknown land. With skilled Indian guides the explorer can follow streams at will, penetrating the lonely haunts of big game in regions rarely visited by white men, travelling for days upon waters swarming with trout and finding sport unlimited. At Roberval, on Lake St. John, is a fine hotel, another at Grande Descharge, and steamers ply in the lake, from which the Saguenay flows to the St. Lawrence. Lake Edward, between Quebec and St. John, is another excellent fishing water at which there is also a good hotel.

Along the Lower St. Lawrence are many noted salmon fishing streams which can be reached by rail or steamer.

### THE LAURENTIAN MOUNTAINS.

Immediately north of Montreal are the Laurentian Mountains, which are penetrated by the Labelle Branch of the Canadian Pacific Railway to Labelle. This is a charming region, diversified by high mountains, pleasant valleys, and a vast tangle of lakes and streams which have no superior amongst the trout fishing waters of America.

It is only a 20-mile run to Ste. Therese, where the railway through the Laurentians branches off to the north, and



IN THE LAURENTIAN HILLS.

thirte  
branch  
pretti  
below  
are tw  
most  
trout  
away,  
the la  
ween  
is exce  
attrac  
shooti  
Sh  
branch



three-  
Masso  
landsc  
eigh  
east is  
dams  
Lac d  
campi  
No  
is the  
miles  
and w  
thirty  
fishing  
excell  
mer re  
is a st  
engag  
guests  
to driv

thirteen miles further is St. Jerome, from which another branch leads to Montcalm. On this branch is New Glasgow, prettily situated on the side of a mountain and in the valley below, near the waterfalls of a mountain stream. There are two hotels and excellent facilities for camping amidst the most delightful environments. Above the falls is good fly trout fishing, and in Lac L'Achigan, about eleven miles away, there are bass, large grey and some red trout, while in the lakes a few miles further north bass are plentiful. Between St. Jerome and Ste. Sophie, is Ste. Julienne, where there is excellent trout fishing and to which place sportsmen are attracted in the fall of the year by the capital woodcock shooting on the flat lands.

Shawbridge, nine miles from St. Jerome on the Labelle branch, and forty-two from Montreal, is the gateway to the lake district of Ste. Angelique, a region little known to tourists and where there are good camping, boating and fishing. Two miles further on, the Montfort Junction Railway leads to another virgin field, winding up the mountain sides to one of the highest points in the Province. In the lakes and brooks are trout, both red and grey, and in the woods are red deer, ruffed grouse and rabbits. There is a fine new hotel at Montfort.



From St. Margaret, or Belisle's Mills, it is a three-mile drive to Ste. Marguerite, a pretty village on Lac Masson, where from the crest of a near-by mountain a glorious landscape is obtained. Within view are no fewer than eighteen lakes—all capital fishing waters—and north and east is Lac Charlebois, famous for its trout. By a series of dams a water-way has been constructed from Lac Masson to Lac des Islets, the banks of which are incomparable as a camping ground.

Near where the Laurentians reach their greatest altitude is the pleasant village of Ste. Agathe des Monts, sixty-four miles from Montreal, delightfully situated on Lac des Sables, and within a radius of seven or eight miles are no fewer than thirty-three lakes, in nearly all of which there is trout fishing. On the sloping banks of Lac des Sables, which afford excellent camping facilities, are a number of handsome summer residences erected by wealthy citizens of Montreal. There is a steam launch on the lake, and small boats can easily be engaged, the larger hotels usually supplying them free to guests. The roads in the vicinity are good, enabling visitors to drive through the country and reach nameless lakelets in

## FISHING AND SHOOTING IN PROVINCE OF QUEBEC

which few lines have been cast. Good hotel accommodation is provided, there being five hotels and several good boarding houses in the village. The rates at the hotels are from \$1.00 to \$2.00 per day, with material reductions for prolonged visits, and good accommodation can be secured elsewhere from \$3.00 per week upwards.

From Ste. Agathe it is an attractive seven mile drive to Ste. Lucie, around which cluster twenty fishing lakes. The village boasts of an hotel at which visitors can be supplied with boats, fishing tackle and vehicles. Eighteen miles away—and more tempting to the sportsman than to those in quest of rest and repose, are several lakes, in a wild region where red deer, lynx and partridge are found.

St. Faustin, on the railway line, seventy-eight miles from Montreal, has its quota of well-stocked lakes, in close proximity.

St. Jovite, eight miles further north, is another charming lake centre, picturesquely situated in a broad valley. The Riviere au Diable, a noted trout stream, flows through the village. Among the lakes in the immediate vicinity are Lac Long,  $1\frac{1}{2}$  miles away, celebrated for its salmon trout and large pike; Lac Brochet, two miles from the village, in which pike, perch and doré are plentiful; Lac Ouimet, three miles, an island dotted sheet, which has been called "the fisherman's paradise" and Lac Lamoureux, Clair, Desmarais, Mercier and others as yet unnamed.

Lac Tremblant, the largest lake in the district, is reached from either St. Jovite, Montagne Tremblant or Conception, the next railway station north. Salmon trout and grey trout, the latter of which average from seven to ten pounds, are plentiful, and there is good shooting in the locality. Mount Tremblant is alluring to mountain climbers, it being a day's scramble to the top, where the incomparable views which its eminences afford amply recompense one's exertions. On the summit and side are the three Stair lakes, connected by grand waterfalls, whose thunderings vibrate the earth and give the mountain its name. So peculiarly fascinating are the surroundings, and so eminently fitted for the purpose is the place, that its early erection into a great provincial park is assured.

The terminus of the railway is at Labelle, 100 miles from Montreal, a village on the Riviere Rouge, from which, within easy distance, are numerous lakes in which are salmon trout and grey trout, bass, dore and pike. Bark canoes and small boats and guides can be secured at Labelle.

Ten miles further north from Labelle station is La Macaza, an excellent road following the River Rouge to Macaza Falls. There are a multitude of lakes in this district, largest of which is Lac Chaud, in which salmon trout and grey trout, etc., are found.

Further away to the north is St. Ignace de Nomingue, the centre of the Nomingue district, to which there is a good road from Labelle, 20 miles away. Amongst the large number of lakes in this vicinity, there being thirty unnamed

withi  
miles  
charg  
Label  
is an  
Boats

B  
pleasa  
shoot  
to Bu  
hance  
would  
to Bu  
more  
by the  
from  
railwa

B  
112 m  
groun  
easily

St  
join th  
are a



of from  
the Na  
St. And  
the cen  
the sur  
rabbits  
a drive  
as goo

within a radius of four miles—are Grand Lac Nominingue, 33 miles in circumference, the River Nominingue forming a discharge by which the Rouge can be followed 13 miles to Labelle, Little Lac Nominingue in which, like its big brother, is an abundance of grey trout, dore, pike, white fish, etc. Boats and guides can be secured at St. Ignace de Nominingue.

By driving from Labelle to Rapide L'Original, through a pleasant country, in which there is excellent fishing and shooting en route, a canoe trip can be made down the Lievre to Buckingham, and the delights of the outing will be enhanced by running up the Lievre to the Ferme Neuve, which would add a day to the four days, which the trip from Labelle to Buckingham would require, but a whole week would be more profitably spent on the outing. The return can be made by the Rouge to Calumet or the Riviere du Nord to Lachute, from both of which towns Montreal is reached by a short railway run.

### THE LOWER OTTAWA.

Between the cities of Montreal and Ottawa, a distance of 112 miles, are many desirable fishing waters and shooting grounds not far away from the Ottawa River, and which are easily accessible.

Ste. Anne de Bellevue, where the waters of the Ottawa join the St. Lawrence, Vaudreuil, Hudson and Rigaud, which are about an hour's ride from Montreal on the Canadian

Pacific, are favorite resorts for local fishermen, whose catch includes bass, dore and pike.

Near Calumet, 59 miles from Montreal, the Rouge comes down through the Laurentians and flows into the Ottawa. About 14 miles in the interior the lake region is entered at Maple Falls, a pretty cascade, which can be reached by conveyance or by canoe up the Rouge on which several easy portages are necessary.

From Montebello and Pointe au Chene there are good roads to capital fishing and shooting within a range

of from 15 to 25 miles, and from Papineauville the waters of the Nation and Blanche and La Petite Rouge can be reached. St. Andre Avellin, 9 miles, and Hartwell, 13 miles further, being the centre of excellent trout fishing lakes and streams, and in the surrounding country there are plenty of deer, ruffed grouse rabbits and ducks, as well as fox and raccoon. From Thurso, a drive of about 25 miles, takes one to another district equally as good for sport—Mulgrave, Derry, Ripon and Lathbury.





Dore.

O  
Ingha  
Bay,  
Statio

B  
people  
three  
region  
within  
course  
man o  
nificer  
other  
large  
daily  
presen  
of Ni  
add to  
Falls  
pleasa  
modat  
be tak  
Gatin  
Tapan  
Lake  
and th  
portag  
the F  
branc  
mish.  
which  
making  
O  
other  
Ferm  
the L  
the w  
is usu  
steep  
from  
and la  
F  
are w  
ten m  
surrou

T  
where  
and o  
Temis  
scarce  
skirts

On the Ottawa River, between Papineauville and Buckingham, there is good fishing and duck shooting at Campbell's Bay, which is most conveniently reached from Rockland Station.

### THE LIEVRE.

Back of Buckingham, a prettily situated town of 3,000 people, on the banks of the Lievre river, at Dufferin falls, three miles from the railway station, is another attractive region, where red deer and small game are plentiful within ten miles of the town. Further away, the game, of course, is more plentiful, but at no great distance the sportsman can be assured of excellent shooting. There are magnificent cascades where the railway crosses the Lievre and others at the town, beyond which the river is navigable for large steamers to High Falls, 25 miles distant. There is a good daily steamboat service on this part of the route. High Falls presents a pleasing picture. The cataract itself rivals a section of Niagara in its grandeur, and the magnificent forested banks add to the picturesqueness of the scene. From the head of the Falls another steamboat plies as far as Oxbow Farm, a pleasant sail of three and a half hours. There is good accommodation at the farm for travellers, and from here canoe can be taken by Lac des Sables and Thirty-One Mile Lake to the Gatineau via Post Creek. Another route up the Lievre is to Tapanee River, and up that stream and Lake Tapanee, Silver Lake streams and Piscatoshin Lake to Baskatong Depot farm, and then down the Gatineau, there being ten short and easy portages on the journey. A third route is up the Lievre to the Forks, 225 miles from Buckingham, and taking the west branch to the Gatineau via Lakes Mejamangoos and Mishomish. Between the Forks and the Gatineau are 23 portages, which are not difficult, and three days would be occupied in making this part of the trip.

One can reach the St. Maurice, and thence any of the other districts to the east by taking the east branch. At Ferme Neuve, formerly called Mountain Farm, 125 miles up the Lievre, good accommodation is available, and throughout the whole region beyond are lumber camps, whose hospitality is usually freely offered. Near the farm is Mount Job, whose steep ascent offers opportunities for mountain climbers, and from whose summit a grand panorama of woodland, stream and lake unfolds itself.

From East Templeton, 100 miles from Montreal, there are well-made roads to a good deer country commencing ten miles away in the Townships of Templeton, Denholm and surrounding country. The trout fishing is good also.

### THE UPPER OTTAWA.

The region of the Upper Ottawa is not surpassed anywhere as a game country, either in its vastness or the quality and quantity of sport it furnishes. It includes the famous Temiskaming country and other park-like sections that are scarcely if at all inferior to it. The Canadian Pacific Railway skirts the Ottawa for 356 miles, and while beyond Ottawa

## FISHING AND SHOOTING IN PROVINCE OF QUEBEC

City it runs along the Ontario bank, the towns on its line form the most convenient bases from which tours can be made into Quebec.

Arnprior, 52 miles from Ottawa, where guides and boats can be procured, is situated on Lac des Chats, an expansion of the Ottawa, in which there is capital bass fishing, especially at des Chats rapids, where, as along other parts of this great waterway, are excellent camping grounds.

Pembroke, a large town of 5,000 population, is another important point near which excellent trout, black bass, dore and maskinonge fishing is obtainable. It is situated on Allumette Lake, another expansion of the Ottawa, and 15 miles below the town are the Paquette Rapids, than which there is no better spot for camping, nor one that affords better chances for obtaining a good string. Eleven miles from Pembroke, good bass fishing can be obtained, near Petewawa, a station on the Canadian Pacific. By taking steamer from Pembroke to Fort William, Quebec, 15 miles up the river, one reaches good trout fishing streams, and there is a summer hotel at the Fort, which makes comfortable headquarters; or the trip can be extended by steamer to Rapide des Joachims, 45 miles, through Deep River, which is the Ottawa under another name.

From Chalk River, a divisional point on the Canadian Pacific, a five-mile drive takes one to the Ottawa, which is crossed by ferry to Schyan Point, from which there is a good canoe route to the head of Schyan Lake, 40 miles, and Bass Lake, or up the Little Schyan and Latour's Creek. Speckled trout, some of very large size, are in abundance in these and tributary waters, and close to the river deer are to be found and moose further back.

The waters of the Du Moine are reached from Moor Lake Station by a five-mile drive to Des Joachims, from which it is a twenty-mile drive to Rowanton, where canoe can be taken up the Du Moine to Big Lake, there being excellent hunting—moose, deer and bear, besides smaller game—in the country beyond Rowanton; and the trip can be extended to Grand Lac Victoria, on the Upper Ottawa, from which tours can be made indefinitely in every direction—east, west and north—to Lake Temiskaming and to James' Bay in the far north, or one can retrace his steps by a variety of watery paths southwards to different points on the Ottawa.

Fifteen miles from Des Joachim is Reddy's, a good stopping place on the Du Moine, and from it a road leads to what is called a sportsman's paradise on the Black and Coulonge Rivers, the Black involving a drive of about 20 miles and the Coulonge of one of about 50. A return to civilization can be made by canoe either down the Black or Coulonge, which are large streams, and there is capital fishing and shooting *en route*. Reddy's can also be reached from Mackey Station of the C. P. R. by canoeing up the Du Moine, but it is not the usual route taken.

The west branch of the Du Moine is also a good canoe stream, and up Fils du Grand Lac (about 40 miles) there are lots of moose as well as other game.



HEC

its line  
be made

and boats  
in expan-  
s fishing,  
r parts of  
ds.

another  
pass, dore  
ed on Al-  
d 15 miles  
n there is  
r chances  
Pembroke,  
a station  
Pembroke  
e reaches  
r hotel at  
s; or the  
nchims, 45  
wa under

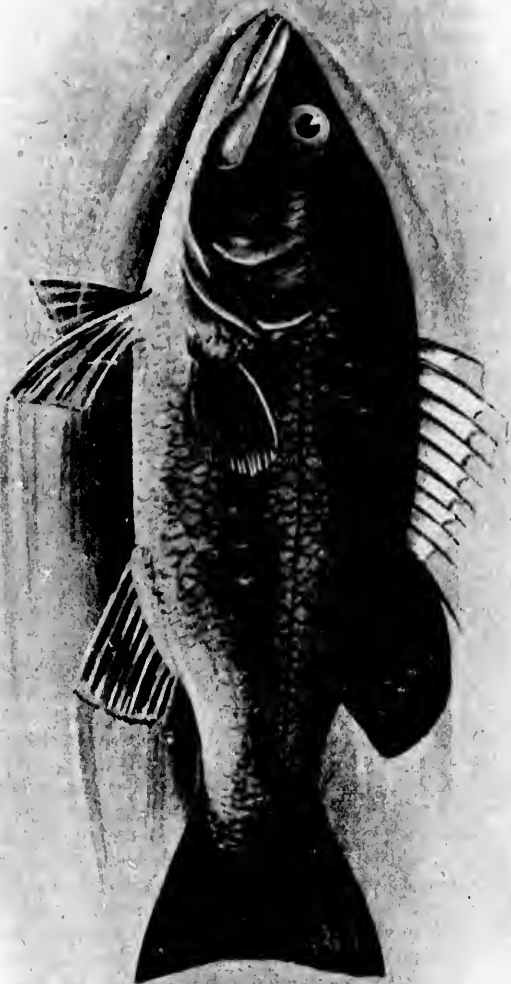
Canadian  
which is  
e is a good  
and Bass  
Speckled  
these and  
be found

Moor Lake  
ms, from  
ere canoe  
eing excel-  
e game—in  
e extend-  
awa, from  
irection—  
to James'  
eps by a  
ints on the

d stopping  
to what is  
Coulonge  
les and the  
ion can be  
which are  
ooting *en*  
Station of  
is not the

good canoe  
) there are

BLACK BASS.



Bear River, along which is good moose and deer hunting, as well as fishing, within 15 miles of the Ottawa, is reached from Rockcliffe, immediately across the Ottawa, which makes excellent headquarters for sportsmen.

From Deux Rivières another good game and canoeing country can be reached. Eighteen miles up Maganasipi River is the Hull Lumber Company's farm on Lake Lindsay, from which Caughwana Lake is distant 17 miles over a fairly good road, or part of the way can be done by canoe up the Maganasipi to a small creek which flows into Russell Lake, from which it is a short portage to Caughwana. Trout weighing from two to three pounds abound. From Caughwana the trip can be extended through Brule Lake, 12 miles long into Sand Lake, thence by a smaller lake and Garden River into Sair's Lake, and by the Kippewa River to Kippewa Lake, near Temiskaming, where the railway is reached; or from Sair's Lake a variety of trips can be made of greater or less extent by following the different water courses.



All through this region there are plenty of moose, deer and bear, as well as otter, beaver, martin and mink, and there is good fishing, red and grey trout being found in nearly all the lakes. The trip from Deux Rivières to Kippewa can be made easily in five days, and the return to Montreal by train in a night or a day, there being two trains from Mattawa every week day.

### MATTAWA.

Mattawa is on the main line of the Canadian Pacific Railway, and can be reached in eleven hours' run from Montreal. It is a good sized town and a great fur trading place for many years past, with comfortable hotels, and from it the contiguous country can be exploited. McCracken's Lake, four miles distant, is reached by waggon road. Splendid sport can be obtained here. Speckled trout weighing from 3 to 4 pounds being plentiful. McCracken's Lake is separated by a short portage from Lake Timmins, a somewhat similar sheet of water, and in the surrounding forests are to be found moose, deer, bear, ruffed grouse, etc. Antoine Creek, which empties into the Ottawa, a few miles above Mattawa is another noted stream, and following it up another cluster of good fishing waters are met. There are good camping facilities all along these lakes, which, however, are so near Mattawa that many prefer to drive out to them in the early morning and return at night.

## THE TEMISKAMING.

The great Lake Temiskaming—"the lake of the deep and shallow water"—is reached at Temiskaming station, a two hours run from Mattawa. The railway, notched in the river bank, closely follows the sinuosities of the Ottawa, which north of Mattawa, is a succession of long reaches and expansions with intervening rapids. There is the interesting scenic combination of great pine lands, rugged mountains, many sparkling streams and dashing waterfalls which with the swirling waters of the greater river present a glorious panorama. To the east Beauchene and Bolsfranc lakes and their outflowing streams furnish good sport.



FALLS OF MATTAWABIKA.

Lake Temiskaming is a magnificent body of water that stretches for 75 miles north, with a varying width of from one to three miles, and along its entire length the grandeur of the scenery appeals as strongly to the lover of nature as the prolificacy of its woods and waters does to the ardent sportsman. It is the great link in the chain of waterways by which all parts of this region are reached.

At Temiskaming Station is a fine hotel—the Bellevue—which is the most convenient as well as the most comfortable headquarters for sportsmen and tourists visiting the country, and also a favorite rendezvous for persons suffering from hay fever and similar maladies, the air being clear and bracing, the surroundings congenial and the conditions favorable for recuperation. The Bellevue is a modernly built house, well appointed and nicely furnished, lighted by electricity, with bathrooms, etc., and in a spacious adjoining building, has a billiard room, bowling alley and amusement hall. Good guides,

canoes and all necessary supplies are procurable here, and licenses to hunt can be obtained at the hotel, whose manager will arrange for expeditions on short notice.

In all this region are lakes abounding with speckled trout, black bass, grey trout, pike, dore, maskinonge, etc., and there are moose, deer, bear, ruffed grouse duck, and further north caribou, besides many fur-bearing animals.

Running in connection with the Bellevue Hotel and meet

ing the Canadian Pacific trains is a perfectly equipped line of steamers. These steamers run regularly and the timetables are so arranged that a couple of days can be pleasantly



A RIVER CAMP.

spent in reaching the head of the lake, and a week or longer in making the round trip.

Opemikan (Obimikan, the narrows, where there is swift water), nine miles from Temiskaming, is a fine spot for fishing and shooting. Daily trips can be made from Temiskaming and the return made in the evening.

Kippewa River, 21 miles further north, is another excellent spot. This river flows from Lake Kippewa, and has a fall of 300 feet in the nine miles of its length. It has many rapids, and also a fine falls about three miles from its mouth.

On the Narrows is old Fort Temiskaming, one of the oldest trading posts of the Hudson's Bay Company, and which is destined to become a home for pleasure seekers, several summer cottages having already been built.

Fifty-two miles up the lake is Ville Marie, formerly known as Baie des Peres, where the steamers generally tie up for the night, unless special arrangements have been previously made to proceed further up the lake. Travellers have the option of remaining on board the steamer or stopping at an hotel, of which there are several in the village, which has a population of about 800. At several other places opportunities are offered the sportsman to remain over and enjoy the capital bass fishing and good shooting, in the fall of the year especially, there being numberless flocks of wild geese on their southward flight, ducks, plover, etc.

There are several places on the Ontario side—Liskeard, Haileybury, etc., which form convenient bases for shooting

here, and  
the manager

trout,  
and there  
to the north

and meet



week or

is swift  
for fishing  
and skimming

er excel-  
has a fall  
y rapids,

e of the  
nd which  
several

y known  
p for the  
eviously  
ave the  
ng at an  
h has a  
oportuni-  
njoy the  
the year  
on their

isheard,  
shooting



CARIBOU

and fishing parties, and at Montreal River, the outlet for the great Temagaming country, there is perhaps the finest scenery in the whole region.

At North Temiskaming, at the head of the lake, the Ottawa River in its more contracted form flowing into Temiskaming, is once more seen, here bearing the name of Des Quinze River from the fact of there being fifteen rapids in the fifteen miles of its course, the Devil's Chute, a few miles from the mouth, being a remarkably picturesque waterfall.

Beyond Lake Temiskaming waterways lead in all directions through a great game and fishing region, and form *par excellence* the great canoe routes of the world. The scenery is very attractive—a constant succession of scenic surprises throughout the whole region.

James Bay can be reached in about 21 days from the head of the lake by way of the Des Quinze, a river of rapids along which runs a good waggon road to Lac des Quinze with very few portages, both well beaten and clean from constant travel, to Great Lake des Quinze, and thence by paths but little more difficult to the southern end of Hudson's Bay. This route takes one through the entire length of such beautiful and picturesque lakes as Abittibi, and the return trip can be made by the same route or by others, which will bring the traveller out to the Canadian Pacific at Missanabie Station, north of Lake Superior.

If, however, instead of going north to James Bay, he wishes to travel eastward by equally as good canoe routes, he can go from Lac des Quinze by the "alligators" of the lumbering companies to Lac Expanse and thence by Grand Lac Victoria and Lac Barriere, Bouchette River and lake, and up the Ottawa and by an infinite number of ways reach the St. Maurice, and paddle down the stream to Grandes Piles, where railway communication with the outer world is again gained. This is the grandest of all canoe trips, and the outing would occupy about six weeks in a leisurely fashion. A pleasant three weeks' trip is to strike off from the Ottawa to the Gatineau and going by Lake Mejomangoos and down the west fork of the Lievre to Buckingham. A third outing, also occupying about three weeks, is from Lac Barriere via Kakebonga and Jean de Terre River and Baskatong, Silver Lake streams and Tapanee River and thence down the Lievre. Or these trips can be extended further eastward, as already mentioned, to Lake St. John, north of Quebec City, and the return home made from there by railway.

### LAKE KIPPEWA.

Another charming water is Lake Kippewa, lying directly to the east of Temiskaming, from which it is reached by the short line of railway which follows up the rapid waters of Gordon Creek. Kippewa is dotted with innumerable islands, on some of which are lovely lakelets, and its arms spread out like the tentacles of a huge octopus in many directions, giving it a coast line of about 600 miles. Steamers make trips in different directions which reveal the splendors of these waters,

FISHING AND SHOOTING IN PROVINCE OF QUEBEC

Outlet for the best scenery

the lake, the into Temiskaming of Des Rapids in the miles from all.

in all directions form *par* The scenery is surprises

from the head rapids along with very constant travel, little more This route beautiful and can be made the traveller in, north of

Quinze Bay, the routes, the lumber-Grand Lac Lake, and up each the St. miles, where gain gained. going would A pleasant wa to the down the cutting, also via Kake-silver Lake Riviere. Or ready men- the return

ing directly ned by the waters of the islands, spread out ons, giving rips in dif- se waters,

whose intricacies are suggested by its Indian appellation, which means "hiding place." There is hotel accommodation at the village of Kippewa, where the tourist can also arrange for guides, etc. Kippewa gives a bewildering choice of canoe routes—one by the Maganasipi to Deux Rivieres, another by the DuMoine to Des Joachims, each occupying from six to eight days, a third by Ostaboing Lake and Fraser River to Quinze Bay and the head of Lake Temiskaming, and thence by steamer, an eight to ten day's cutting; another via North River, Birch Lake, Cascakanan Lake, thence by Ross Lake to Lake Expanse and down the Ottawa to Lake Temiskaming, which would occupy about a fortnight. These trips could be multiplied indefinitely, and some would take from a few days to a few weeks, but the whole summer could be passed in these delightful solitudes with scarcely a duplication



NATURAL CANAL, LAKE KIPPEWA.

of route, and with innumerable deviations one can paddle and shoot and fish at will, and reach the furthest north at Hudson's Bay, the nearer west, or glide down upon those magnificent highways of waters that terminate with the incomparable St. Lawrence.

THE EASTERN TOWNSHIPS, ETC.

The waters of the Eastern Townships, a short railway trip from Montreal, afford excellent sport for the angler. Brome Lake, a beautiful sheet of water, 60 miles distant, has an attraction in its bass fishing. Boats and guides can be obtained at Knowlton, where there is good accommodation for visitors.

In Lake Memphremagog, which lies partly in Vermont, there are lake trout and pickerel. Magog station is a

## FISHING AND SHOOTING IN PROVINCE OF QUEBEC

convenient place for reaching either this lake or Magog River; and other lakes, especially those near North Hatley, are convenient to railway communication.

Lake Megantic, 175 miles from Montreal, is another noted water, lying adjacent to Maine. In the bays and inlets speckled trout rise readily to the fly, and all the tributaries of the lake are well stocked with them. Large trout, scaling as high as 20 and 25 pounds, have been caught in the lake on trolls during June and September, and in the surrounding waters there is splendid fishing, while the woods of Megantic—alive with deer and smaller game—have given that region a reputation amongst the fraternity which few places outside of Quebec enjoy.

Whatever the region chosen by the visitor for exploitation, he will find it easy of access, with excellent facilities for procuring reliable guides when necessary, and supplies, comfortable accommodation at many places, and when away from the confines of civilization splendid camping grounds everywhere. He will meet with a hospitable people who will willingly furnish any further detailed information regarding routes, etc., that may be required, and with the healthy and invigorating air, fragrant with the scent of the balsam and pine, he can ramble at leisure through the vast stretches of country assured of valued trophies of his skill and the enjoyment of the most glorious outing that can be proffered by any land to the devotee of the rod, rifle or canoe.



Sp  
or rela  
are req

ARCHE  
W  
En  
Gla

H. J. C  
Bo

E. V. S  
Yo

H. Mc  
nu

C. G. C  
mo

W. W  
var

A. J. S  
St.

A. E.  
De

F. W.  
Pit

J. F. I  
St.

C. E. I  
tre

Go  
Quebec

Co  
provin  
stream  
which  
tending  
been l  
a port  
mentio  
In

G.P.A.



## SPECIAL NOTICE

Sportsmen desiring further particulars regarding Quebec, or relating to arrangements for an outing in that Province, are requested to communicate with the following:—

- ARCHER BAKER, European Traffic Manager, 67 and 68 King William St. E.C., and 30 Cockspur St. S.W., London, Eng.; 7 James St., Liverpool, Eng.; and 67 St. Vincent St., Glasgow, Scotland.
- H. J. COLVIN, District Passenger Agent, 197 Washington St., Boston, Mass.
- E. V. SKINNER, General Eastern Agent, 353 Broadway, New York.
- H. MCMURTRIE, Freight and Passenger Agent, 629-631 Chestnut St., Philadelphia, Pa.
- C. G. OSBURN, Freight and Passenger Agent, 129 East Baltimore St., Baltimore, Md.
- W. W. MERKLE, Freight and Passenger Agent, 1229 Pennsylvania Ave., Washington, D.C.
- A. J. SHULMAN, City Passenger and Freight Agent, 233 Main St., Buffalo, N.Y.
- A. E. EDMONDS, City Passenger Agent, 7 Fort Street West, Detroit, Mich.
- F. W. SALSURY, Commercial Agent, 409 Smith Building, Pittsburg, Pa.
- J. F. LEE, General Agent, Passenger Dept., 228 South Clark St., Chicago, Ill.
- C. E. E. USSHER, G.P.A. Lines East of Lake Superior, Montreal, Que.

---

Government maps of various sections of the Province of Quebec may be obtained upon application to

N. E. CORMIER,  
Provincial Game Warden and Fishery Overseer,  
Aymer East, Que.

---

## LEASED TERRITORIES

Comparatively few of the many fishing waters in Quebec province, north of the St. Lawrence, excepting the salmon streams, have been leased, and even in many of those waters which are under lease fishing may be had, provided the intending angler is properly introduced. Hunting rights have been leased in a very small portion of the province, so small a portion having been reserved as to make it hardly worth mentioning.

Information as to portions leased may be obtained from G.P.A., C.P. Ry., Montreal, through any C P. Ry. Agent.

# Export of Deer, Caribou and Moose

## CANADIAN CUSTOMS REGULATIONS.

### MEMORANDUM

No. 1063 B

CUSTOMS DEPARTMENT,

Ottawa, 18th August, 1899.

To Collector of Customs:

The following Regulations respecting the Export of Deer, shot for sport by persons not domiciled in Canada, have been made and established, viz.:-

1. Deer when shot for sport under Provincial or Territorial Authority in Canada, by any person not domiciled in Canada, may be exported under the following conditions and limitations:-

1. The deer may be exported only at the Customs Ports of Halifax, Yarmouth, McAdam Junction, Quebec, Montreal, Ottawa, Kingston, Niagara Falls, Fort Erie, Windsor, Sault Ste. Marie, Port Arthur, and such other Ports as shall from time to time by the Minister of Customs be designated for the export of deer.

2. The exportation of deer in the carcase or parts thereof (except as to cured deer heads and hides of deer) shall be permitted only during or within fifteen days after the "open season" allowed for shooting deer under the laws of the Province or Territory where the deer to be exported has been shot.

3. No person shall in one year export more than the whole or parts of two deer, nor shall exportation of such deer be made by the same person on more than two occasions during one calendar year.

4. Deer in the carcase or any part thereof which has been killed in contravention of any Provincial or Territorial law shall not be exported, nor shall any deer in the carcase or parts thereof be exported without the permit of the Collector of Customs accompanying the shipment.

5. A person, not domiciled in Canada, who has shot deer for sport and not for gain or hire, under Provincial or Territorial Authority may make an export entry in duplicate of deer in the carcase or parts thereof so shot by him and allowed to be exported—upon subscribing and attesting before a Collector of Customs a Declaration in the following form to be annexed to said export entry, viz.:-

(AS PER FORM IN APPENDIX)

6. The exporter shall produce his license or permit for shooting deer under Provincial or Territorial Authority to the Collector of Customs before the exportation of the deer, and the Collector shall endorse thereon a description of the quantity and parts entered for exportation.

The Collector of Customs at any Customs Port of Entry designated for the Export of Deer, upon receiving the said export entries duly completed, may thereupon under the seal of the Custom House, issue his permit for the exportation of the deer, if satisfied as to the identity of the sportsman and that the exportation is not prohibited.

JOHN MCDUGALD,  
Commissioner of Customs.

APPENDIX.

Form of Declaration to be made in connection with the Export of Deer, shot for sport by persons not domiciled in Canada.

I, ..... of ..... do solemnly and truly declare that the deer in the carcass or parts thereof described in the annexed Export Entry have been shot by me at ..... in Canada, for sport and not for gain or hire, under Authority of the License or Permit issued under Provincial or Territorial Authority herewith exhibited; that I am not domiciled in Canada; that I have not exported directly or indirectly within this calendar year deer in the carcass or parts thereof, shot by me in Canada during the present season, except as follows, viz.:-

(1)\* .....  
.....  
.....

that the deer described in the annexed Export Entry together with the deer heretofore exported by me within the present calendar year are not parts of more than two deer; and I verily believe that the exportation of the deer described in the annexed entry is not prohibited.

.....  
*Signature of Exporter.*

Declared before me at ..... }  
this ..... day of ..... }

.....  
*Collector of Customs.*

(1\*) Parts exported and place of exportation.

As export from Canada is permitted only at the ports specified, sportsmen should ship from the interior to the most convenient authorized Customs Port shown in paragraph 1.

Certificates of membership of hunting or fishing clubs are not valid licenses or permits under clause 6. The regular Provincial License for the current hunting season issued by a person authorized by the Commissioner of Lands, Forests and Fisheries must be produced.

On sufficient notice to General Passenger Agent, C.P. Ry., Montreal, direct, or through any C. P. Ry. agent, a passenger representative will meet any party of sportsmen, and assist them in making necessary Customs arrangements.

Tourists and Sportsmen's Outfits

CANADIAN CUSTOMS REGULATIONS

The articles which may be brought into Canada (in addition to wearing apparel, on which no duty is levied), as tourists' outfits, comprise guns, fishing rods, canoes, tents, camp equipment, cooking utensils, musical instruments, Kodaks, etc., etc.

A deposit of duty on the appraised value of the articles imported must be made with the nearest Collector on arrival in Canada, which deposit will be returned in full, provided the articles are exported from Canada within six months.

FISHING AND SHOOTING IN PROVINCE OF QUEBEC

REPORT FOR DEPOSIT ON TOURIST'S OUTFIT

(In Duplicate)

Entry No. .... Report No. ....

Port of ..... 100..

Tourist's Outfit imported by .....  
of ..... per .....  
from .....

Marks and Nos.	Descriptions of Articles.	Value.	Rate.	Duty.	Remarks re Exportation.

The said deposit of ..... dollars has been received by me on the conditions stated by the importer.

[STAMP] ..... *Customs Officer.*

I ..... (owner or agent) do solemnly declare that the above is a full and true statement of the description and values of the articles imported by me as Tourist's Outfit, with the amount of duty deposited thereon, the said deposit to be entered for duty if the articles are not duly exported within six months.

(Signature) .....

(Address) .....

If the tourist is unable to have his outfit exported and identified at the Customs Port where the deposit of duty is made, so as to receive back his deposit before leaving Canada, he can have the articles inspected and certified as below. The Tourist's Report of the articles exported and certified as aforesaid may then be mailed to the Customs Officer at the port of entry, who will forward a remittance, by mail, for the money deposited (less expense of remittance).

The articles which may be brought in as Tourists' Outfits comprise: Guns, Fishing Rods, Canoes, Tents, Camp Equipment, Cooking Utensils, Musical Instruments, Kodaks, etc.

*Declaration as to return of Outfit, attested to before a Customs Officer in Canada or at a place out of Canada.*

Articles described herein inspected by me at .....

this ..... day of ..... 19.....

and exported or landed as declared.

Sworn to before me,

.....  
*Customs Officer.*

[STAMP].

I ..... (owner or agent) do solemnly declare that the identical goods hereinbefore described are now presented for inspection, the same having been delivered for exportation from the port of ..... per ..... or landed at ..... from ..... per .....

(Signature) .....

File 37827.

No. 1006 B.

On sufficient notice to General Passenger Agent, C. P. Ry., Montreal, direct, or through any C. P. Ry. Agent, a passenger representative will meet any party of sportsmen and assist them in making necessary Customs arrangements, etc.

# SYNOPSIS OF ..... GAME LAWS

of the PROVINCE OF QUEBEC

## HUNTING

### BIG GAME

#### Open Season

- Moose and Deer, September 1st to December 31st, inclusive, excepting Ottawa and Pontiac Counties.
- Moose and Deer in Ottawa and Pontiac Counties, October 1st to November 30th, inclusive.
- Caribou, September 1st to January 31st.
- Bear, August 20th to June 30th.

No more than two moose, three deer, and two caribou may be killed in one season by any one person.

Dogs may be used to hunt red deer only between October 20th and November 1st.

The young of deer, moose or caribou if only one year old or less, must not be killed.

Cow moose must not be killed at any time.

### OTHER GAME

#### Open Season

- Mink, Otter, Marten, Pekan, Fox (except yellow or red), Raccoon—November 1st to March 31st, inclusive.
- Fox (yellow or red), at all times.
- Hare, November 1st to January 31st, inclusive.
- Muskrat, April 1st to April 30th, inclusive.
- Beaver are protected until November 1st, 1902.

### GAME BIRDS

#### Open Season

- Woodcock, Snipe, Plover, Curlew, Tatler, Sandpiper—September 1st to January 31st, inclusive.
- Birch Partridge, Swamp Partridge, September 1st to December 14th, inclusive.
- White Partridge (Ptarmigan), November 1st to January 31st, inclusive.
- Widgeon, Teal or Wild Duck of any kind, except Sheldrake, Loons and Gulls, September 1st to March 31st, inclusive.
- Buffle-head Ducks, commonly known as pied-ducks or divers, September 1st to April 14th, inclusive.

Shooting is prohibited between one hour after sunset and one hour before sunrise of woodcock, snipe, partridge, widgeon, teal or wild duck of any kind, and during such hours it is forbidden to keep exposed any lures or decoys.

Eggs and nests of all above wild fowl, as well as wild swan, wild goose or Canada goose, must not be disturbed, injured or taken.

## INSECTIVOROUS AND OTHER BIRDS

### Beneficial to Agriculture, etc.

All small song or insectivorous birds are protected.

#### EAST AND NORTH OF SAGUENAY RIVER

Regulations for that part of the counties of Chicoutimi and Saguenay to the east and north of the River Saguenay are the same as the foregoing, except for the following the open season is as shown below :

- Caribou, September 1st to February 28th, inclusive.  
(Not more than four Caribou may be killed in one season.)
- Otter, October 15th to April 14th, inclusive.
- Hare, October 15th to February 28th, inclusive.
- Muskrat, November 1st to March 31st, inclusive.
- Birch or Swamp Partridge, September 15th to January 31st, inclusive.
- White Partridge (Ptarmigan), November 15th to February 28th, inclusive.

## HUNTING LICENSE

Non-residents are required to obtain licenses to hunt, which may be procured on application to General Passenger Agent, C. P. Ry., Montreal, through any agent of the C. P. Ry., at a cost of \$25.00 for each person.

Licenses should be kept in the personal possession of the sportsman at all times, as they are subject to production on demand of Game Warden.

## WASTE OF GAME

No person who has killed or taken any bird or animal suitable for food shall allow the flesh thereof to be destroyed or spoilt, and no person who has killed or taken a fur-bearing animal shall allow the skin thereof to be destroyed or spoilt.

## TRANSPORTATION (Entire Province)

After the first fifteen (15) days of the close season all public carriers are forbidden to transport any game or portions or hides thereof.

# FISHING

## FISH (Entire Province)

### Open Season

- Bass, June 16th to April 14th, inclusive.
- Maskinonge, July 2nd to May 24th, inclusive.
- Pickereel (Dore), May 16th to April 14th, inclusive.
- Speckled Trout, May 1st to September 30th, inclusive.
- Lake Trout, Grey Trout, or Lunge, December 2nd to October 14th, inclusive.
- Salmon, February 2nd to August 14th, inclusive.
- Whitefish, December 2nd to November 9th, inclusive.
- Onananiche, December 2nd to September 14th, inclusive.

**FISHING LICENSES**

Non-residents are required to obtain licenses to fish, which may be obtained on application to the General Passenger Agent, C.P. Ry., Montreal, through any agent of the Company.

- License Fee, one month, \$10.00.
- "    " two months, 15.00.
- "    " three months, 20.00.

Licenses should be kept in the personal possession of the angler, as they are subject to production on demand of Game Warden.

**TRANSPORTATION (Entire Province)**

After the first ten (10) days of the close season all public carriers are forbidden to transport any kind of fish.

**PROTECTION OF FORESTS FROM FIRE**

The value of the Canadian forests can hardly be over-estimated, although the destruction of small portions of them by fires amounts annually to a serious item. Anyone who has been in a district over which a fire has recently passed will appreciate the utter ruin of the district for several years for the tourist, the hunter, and the angler. We believe that every true sportsman is glad to do anything in his power to prevent destruction of the forests and will observe carefully the following suggestions of the fire rangers :—

"The greatest care should be exercised between April 1st and October 31st, and if a fire is made in the forest, or at a distance of less than half a mile therefrom, or upon any island, for cooking or obtaining warmth, the maker should—

- 1st. Select a locality in the neighborhood in which there is the smallest quantity of vegetable matter, dead wood, branches, brushwood, dry leaves, or resinous trees.
- 2nd. Clear the place in which he is about to light the fire by removing all vegetable matter, dead trees, branches, brushwood, and dry leaves from the soil within a radius of ten feet from the fire.
- 3rd. Observe every reasonable care and precaution to prevent such fire from spreading, and carefully extinguish the same before quitting the place.

"Great care should be exercised to see that burning matches, ashes of pipes and lighted cigars, or burning gun wadding, or any other burning substance, should be completely extinguished before the sportsman leaves the spot.  
 "Too much care cannot be exercised in these important matters."

## List of Agencies

<b>Amey</b> .....	China..	Jardine, Matheson & Co.	
<b>Baltimore</b> .....	Md..	C. O. Osburn, Freight and Pass'r Agt. ....	129 E. Baltimors St.
<b>Batavia</b> .....	Java..	MacLaine, Watson & Co.	
<b>Bombay</b> .....	India..	Ewart, Latham & Co. Thomas Cook & Son, 18 Esplanade Row.	
<b>Boston</b> .....	Mass.	H. J. Colvin, District Passenger Agent .....	197 Washington St.
		F. H. Ferry, City Passenger Agent .....	
<b>Brisbane</b> .....	Qd..	Burns, Philp & Co., Limited.	
<b>Breckville</b> .....	Ont..	Geo. E. McGlade, Ticket Agent. ....	{ Cor. King St. and Court House Ave.
<b>Buffalo</b> .....	N. Y..	A. J. Shulman, City Frt. and Passenger Agent. ....	238 Main St.
<b>Calcutta</b> .....	India	{ Gillanders, Arbuthnot & Co. Thomas Cook & Son .....	9 Old Court House St.
<b>Canton</b> .....	China..	Jardine, Matheson & Co.	
<b>Chemulpo</b> .....	Korea..	Helme, Ringer & Co.	
<b>Chicago</b> .....	Ill.	{ J. Francis Lee, Gen'l Agt., Passenger Dept. .... 226 South Clark St. G. L. Williams, City Passenger Agent. .... W. A. Kittermaster, Genl. Agt., Freight Dept. .... 234 La Salle St.	
<b>Cincinnati</b> .....	Ohio	{ H. R. White, Freight Agent. .... Geo. A. Clifford, Trav. Pass'r Agent. .... } Room D, Chamber of Commerce Building.	
<b>Colombo</b> .....	Ceylon..	Hols Bros. Thomas Cook & Son (E. B. Cresser).	
<b>Detroit</b> .....	Mich.	{ A. E. Edmonds, City Passenger Agent. .... 7 Fort St. W. M. H. Brown, District Freight Agent .....	
<b>Duluth</b> .....	Minn.	T. H. Larke, District Agent. ....	426 Spaulding House Block
<b>Glasgow</b> .....	Scotland.	Archer Baker, European Traffic Manager. ....	67 St. Vincent St.
<b>Halifax</b> .....	N. S.	J. D. Chipman, City Passenger and Freight Agent, 107 Hollis St.	
<b>Hamilton</b> .....	Ont..	W. J. Grant, Commercial Agent. ....	Cor. King and James St.
<b>Hankow</b> .....	Ch'na.	Jardine, Matheson & Co.	
<b>Hong Kong</b> .....	D. E. Brown, General Agent, China and Japan, etc.		
<b>Honolulu</b> .....	H. I..	Theo. H. Davies & Co., Limited.	
<b>Kingston</b> .....	Jamaica.	Gerald A. Morals. ....	Cor. Port Royal and Orange Sts.
<b>Kobe</b> .....	Japan..	G. Millward.	
<b>Liverpool</b> .....	Eng..	Archer Baker, European Traffic Manager. ....	9 James St.
<b>London</b> .....	Eng.	{ Archer Baker, European Traffic Manager { 67 & 68 King William St. E.G. and 30 Cockspur St. S. W.	
<b>London</b> .....	Ont..	W. Fulton, City Passenger Agent. ....	161 Dundas St.
<b>Malta</b> .....		Turnhall, Jr., & Somerville, Correspondents.	
<b>Melbourne</b> .....	Aus..	A. U. S. N. Co., Limited. Thomas Cook & Son.	
<b>Milwaukee</b> .....	Wis..	Edward Olson, Freight Agent. ....	84 Michigan St.
<b>Minneapolis</b> .....	Minn.	W. B. Chandler, Agent, Soo Line. ....	119 South Third St.
<b>Montreal</b> .....	Que.	{ W. F. Egg, City Passenger Agent. .... 129 St. James St. J. Corbett, Foreign Freight Agent. .... Board of Trade Building	
<b>Nagasaki</b> .....	Japan..	Holme, Ringer & Co.	
<b>N. Whatcom</b> .....	Wash..	W. H. Gordon, Passenger Agent .....	1295 Dock St.
<b>New York</b> .....	N. Y.	E. V. Skinner, General Eastern Agent. ....	353 Broadway
		Land and Immigration Office. ....	1 Broadway
<b>Niagara Falls</b> .....	N. Y..	D. Isaacs, Prospect House.	
<b>Ottawa</b> .....	Ont..	Geo. Duncan, City Passenger Agent .....	42 Sparks St.
<b>Paris</b> .....	France	{ Hernu, Peron & Co., Ticket Agents. .... 61 Boulevard Hausmann Hernu, Peron & Co. .... 95 Rue des Marais, St. Martin International Sleeping Car Co. .... 3 Place de l'Opera Thos. Cook & Son .....	1 Place de l'Opera
<b>Philadelphia</b> .....	Pa..	H. McMurtre, Freight and Passenger Agt. 629-631 Chestnut St.	
<b>Pittsburg</b> .....	Pa..	F. W. Salsbury, Commercial Agent. ....	409 Smith Bldg.
<b>Portland</b> .....	Me..	G. H. Thompson, Ticket Agent, Maine Central Rd. Union Depot	
<b>Portland</b> .....	Ore..	H. H. Abbott, Passenger Agent. ....	146 Third St.
<b>Pt. Townsend</b> .....	Wash.	William A. Pfeiffer. ....	106 Taylor St.
<b>Quebec</b> .....	Que..	K. H. Crean, City Passenger Agent. ....	Opposite Post Office
<b>Sault Ste. Marie</b> .....	Mich.	{ F. E. Ketchum, Depot Ticket Agent. T. R. Harvey, Agent, 107 Portage Ave. W. and S. S. Wharf	
<b>St. John</b> .....	N. B.	{ A. J. Heath, District Passenger Agent .....	10 King St.
		W. H. C. Meckay, City Ticket Agent. ....	49 King St.
<b>St. Louis</b> .....	Mo..	{ W. M. Porteous, Freight Agent. .... 315 Chestnut St. C. E. Benjamin, Trav. Pass. Agent. ....	
<b>St. Paul</b> .....	Minn.	W. S. Thorn, A. G. P. A., Soo Line .....	879 Robert St
<b>San Francisco</b> .....	Cal.	{ M. M. Stern, Dist. Frt. and Passenger Agent, Palace Hotel Bldg. Goodall, Perkins & Co., Agents F. C. S. S. Co. .... 18 Market St.	
<b>Seattle</b> .....	Wash.	W. R. Thomson. ....	Mutual Life Building, 609 First Ave.
<b>Shanghai</b> .....	China..	Jardine, Matheson & Co.	
<b>Sherbrooke</b> .....	Que..	W. H. Bottum, City Passenger Agent .....	6 Commercial St.
<b>Sydney</b> .....	Aus..	Burns, Philp & Co., Limited. ....	10 Bridge St.
<b>Tacoma</b> .....	Wash.	F. R. Johnson, Freight and Passenger Agent. ....	1028 Pacific Av.
<b>Toronto</b> .....	Ont..	A. H. Notman, Asst. Gen'l Passenger Agent. ....	1 King St. E.
		E. J. Coyle, Asst. Genl. Passenger Agent.	
<b>Vancouver</b> .....	B. C.	{ Allan Cameron, Asst. Genl. Freight Agent. James Sclater, Depot Ticket Agent. H. M. MacGregor, City Ticket Agent.	
<b>Victoria</b> .....	B. C.	B. W. Greer, Freight and Passenger Agent. ....	Government St.
<b>Washington</b> .....	D. C.	W. W. Merkle, Freight and Pass'r Agt. 1233 Pennsylvania Ave.	
<b>Winnipeg</b> .....	Man.	W. M. McLeod, City Tkt. Agt. Cor. Main St. and McDermott Ave.	
<b>Yokohama</b> .....	Japan..	Wm. T. Payne, General Traffic Agent for Japan .....	1. Bund



# Canadian Pacific Railway Co.'s

**ROYAL MAIL  
STEAMSHIP  
LINE**

## To *Japan and China*

CONSISTING OF THE MAGNIFICENT  
**TWIN-SCREW  
STEAMSHIPS**



*"Empress of India"*  
*"Empress of Japan"*  
*"Empress of China"*

Sailing every four weeks in winter and every three weeks in summer between Vancouver and Victoria, B. C., and Yokohama, Kobe and Nagasaki, Japan, Shanghai, China, and Hong Kong. These steamships are of 8,000 tons register, with a speed of 19 knots, and are the only Twin-Screw Vessels on the Pacific. The shortest and smoothest route across the North Pacific is followed, and with the superior speed of the Empresses enables the voyage to be made in from a week to ten days' quicker time than is required by any other route.

---



---

## Canadian- Australian

## Royal Mail S.S. Line

The Royal Mail Steamships **WARRIMOO**, **MIOWEEA** and **AORANGI** give a service every four weeks between Vancouver and Victoria, B. C., and Sydney, N. S. W., via Honolulu, Hawaiian Islands, and Brisbane, Queensland.

Passengers booked from **London** or **Liverpool**, **New York**, **Boston**, **Montreal**, **Toronto**, or any of the principal cities of **Canada** and the **United States**.

These vessels carry an experienced medical man and a stewardess on each voyage, and are in every respect superior to any other ships that have as yet sailed the Pacific Ocean.

For passage, handbooks of information, or Trans-Pacific or Japanese Guide, apply to any agent of the Canadian Pacific Railway, or to

**O. E. E. USSHER,**

Genl. Pass. Agt., Lines East of Lake Superior,  
MONTREAL.

**O. E. McPHERSON,**

Genl. Pass. Agt., Lines West of Lake Superior,  
WINNIPEG, MAN.

**ROBT. KERR,**

Passenger Traffic Manager,  
MONTREAL.

Baltimore St.

Canal Row.  
Washington St.

King St. and  
Court House St.

Court House St.

South Clark St.

234 La Salle St.  
D. Chamber of  
Commerce Building.

7 Fort St., W.

ing House Block  
St. Vincent St.  
St. 107 Hollis St.  
and James Sts.

etc.

nd Orange Sts.

... 9 James St.  
William St. E. C.  
aput St. S. W.  
161 Dundas St.

4 Michigan St.  
outh Third St.  
9 St. James St.  
Trade Building

... 1293 Dock St.  
... 333 Broadway  
... 1 Broadway

... 42 Sparks St.  
rd Haussmann  
als, St. Martin  
face de l'Opera  
face de l'Opera  
81 Chestnut St.  
09 Smith Bldg.

... Union Depot  
... 146 Third St.  
... 106 Taylor St.  
Site Post Office

and S. S. Wharf  
... 10 King St.  
... 49 King St.  
... 15 Chestnut St.

870 Robert St  
ce Hotel Bldg.  
18 Market St.  
609 First Ave.

ommercial St.  
... 10 Bridge St.  
... 228 Pacific Av.  
... 1 King St. E.

overnment St.  
sylvania Ave.  
Dermott Ave.  
... Bund

# Publications

Issued by the **Canadian Pacific  
Railway Co.**

- 
- "THE NEW HIGHWAY TO THE ORIENT"  
"SUMMER TOURS" "FISHING AND SHOOTING",  
"SPORTSMAN'S MAP OF CANADA"  
"WESTWARD TO THE FAR EAST"  
"EAST TO THE WEST"  
GUIDES TO THE PRINCIPAL CITIES OF JAPAN AND CHINA, TRAVELLING  
BY EITHER THE EASTERN OR THE WESTERN ROUTE.  
"TIME-TABLE WITH NOTES"  
"AROUND THE WORLD"  
"CLIMATES OF CANADA"  
"QUEBEC—SUMMER AND WINTER"  
"MONTREAL"  
"ACROSS CANADA TO AUSTRALASIA"  
"BANFF" "HAWAII"  
ALSO NUMEROUS PAMPHLETS DESCRIPTIVE OF MANITOBA, THE CANADIAN  
NORTH-WEST TERRITORIES AND BRITISH COLUMBIA:  
"WESTERN CANADA" "BRITISH COLUMBIA"  
"GOLD FIELDS OF B.C."  
"CAPE NOME"  
"NEW ONTARIO GOLD FIELDS," ETC.
- 

Most of these publications are handsomely illustrated, and contain much useful information in interesting shape. Time-Tables with Notes will be found a valuable companion for all Transcontinental travellers.

Copies may be obtained FREE from Agents of the Company, or will be mailed to any address on application to undersigned.

The Company has also published a new Map, on the polar projection, showing the whole of the northern hemisphere, and the Canadian Pacific Railway's Around the World Route in a novel and interesting way, and another of Canada and the northern half of the United States, showing the entire system of the Company in detail. A sporting map of Canada, showing the best regions for fish and game, is also issued. These maps will be given away for public and prominent display.

The Company now has on sale in its hotels, principal ticket offices, and on the trains, several series of handsomely finished views of scenes along their lines of railway. Size—12 x 10 inches, in portfolios suitable for the table (12 views in each series), price, \$1.00.

**A. H. NOTMAN**  
Asst. General Passenger Agent  
1 King Street East, TORONTO

**H. J. COLVIN**  
District Passenger Agent  
197 Washington Street, BOSTON

**W. R. CALLAWAY**  
General Passenger Agent  
Soo Line, MINNEAPOLIS

**GEO. W. HIBBARD**  
General Passenger Agent  
Duluth, South Shore & Atlantic Ry.  
MARQUETTE, Mich.

**J. F. LEE**  
General Agent, Passenger Dept.  
228 South Clark St., CHICAGO, Ill.

**E. J. COYLE**  
Asst. General Passenger Agent  
VANCOUVER, B. C.

**A. J. HEATH**  
District Passenger Agent  
ST. JOHN, N.B.

**E. V. SKINNER**  
General Eastern Agent  
353 Broadway, NEW YORK

**A. E. EDMONDS**  
City Passenger Agent  
7 Fort Street West, DETROIT, Mich.

**M. M. STERN**  
District Passenger Agent  
Palace Hotel Building, SAN FRANCISCO

**D. E. BROWN**  
General Agent CHINA and JAPAN, etc.  
HONG KONG

**ARCHER BAKER**, European Traffic Manager

67 and 68 King William Street, E.C. } LONDON, ENG.  
30 Cockspur Street, S.W. }  
67 St. Vincent Street, GLASGOW  
9 James Street, LIVERPOOL

**C. E. McPHERSON**, Genl. Pass. Agt., Lines West of Lake Superior, WINNIPEG.  
**C. E. E. USSHER**, Genl. Pass. Agt., Lines East of Lake Superior, MONTREAL.  
**ROBT. KERR**, Passenger Traffic Manager, MONTREAL.

# Pacific

IT "  
OTING',

AVELLING

A''

CANADIAN

UMBIA''

C.

and contain  
with Notes  
travellers.  
any, or will

projection,  
dian Pacific  
g way, and  
es, showing  
of Canada,  
These maps

cket offices,  
s of scenes  
os suitable

gent  
St. JOHN, N.B.

by, NEW YORK

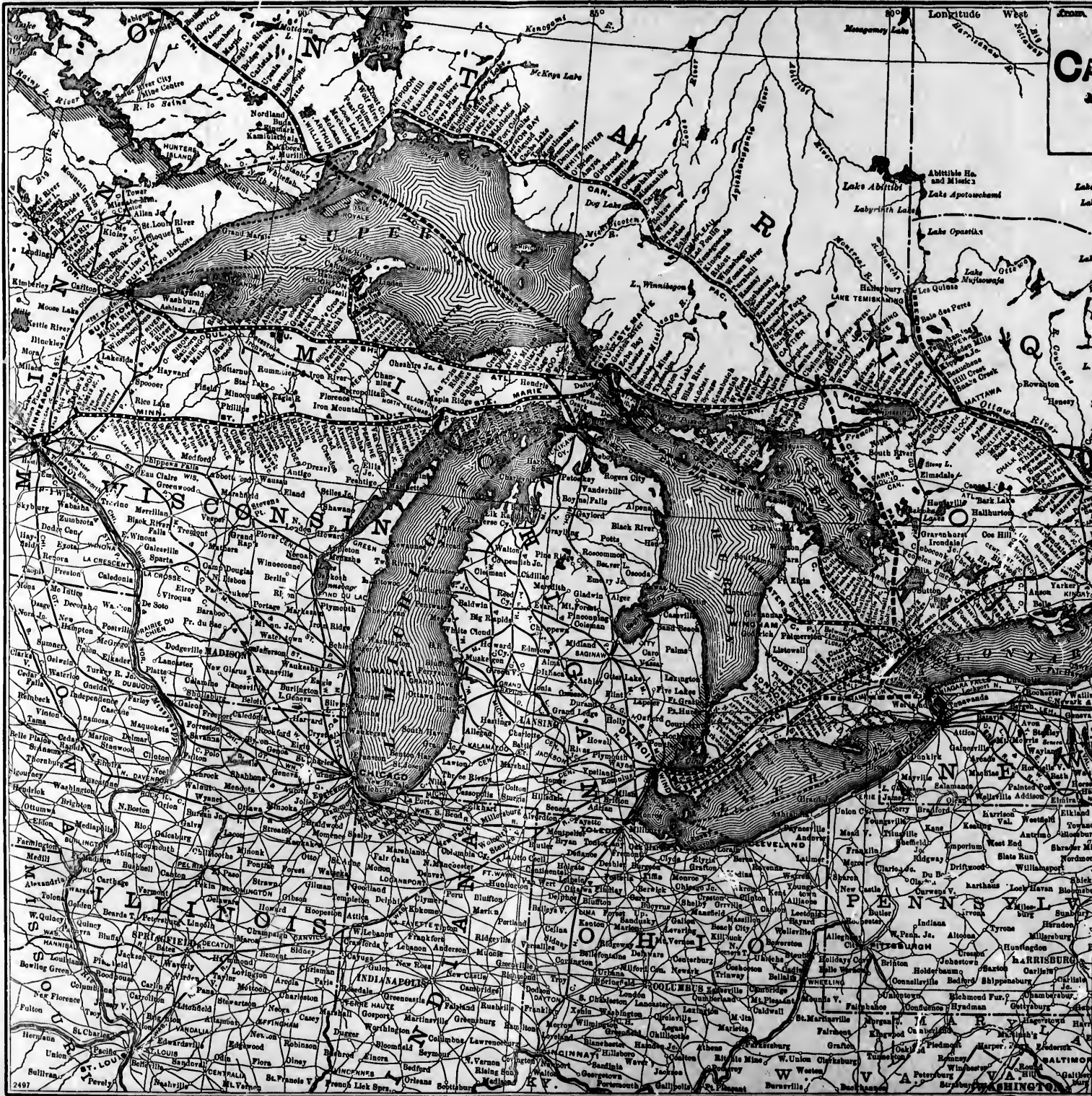
DETROIT, Mich.

SAN FRANCISCO

JAPAN, etc.  
HONG KONG

OR, WINNIPEG.  
MONTREAL.



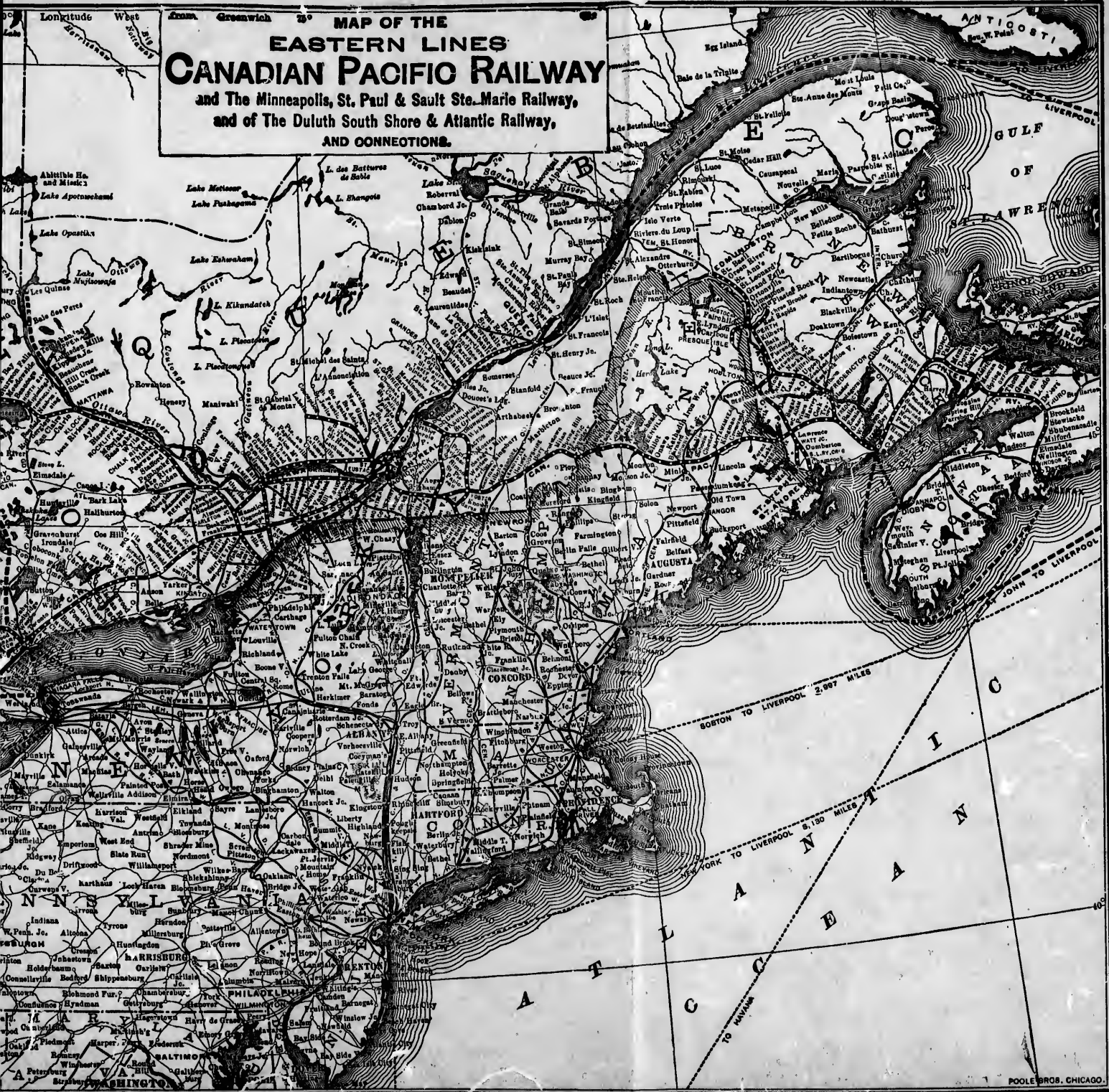




Longitude West  
Greenwich 75°

# MAP OF THE EASTERN LINES CANADIAN PACIFIC RAILWAY

and The Minneapolis, St. Paul & Sault Ste. Marie Railway,  
and of The Duluth South Shore & Atlantic Railway,  
AND CONNECTIONS.



m  
w  
L  
sh  
R  
ar  
th  
sh  
at  
al  
fo

A.

H.

W.

O.

J.

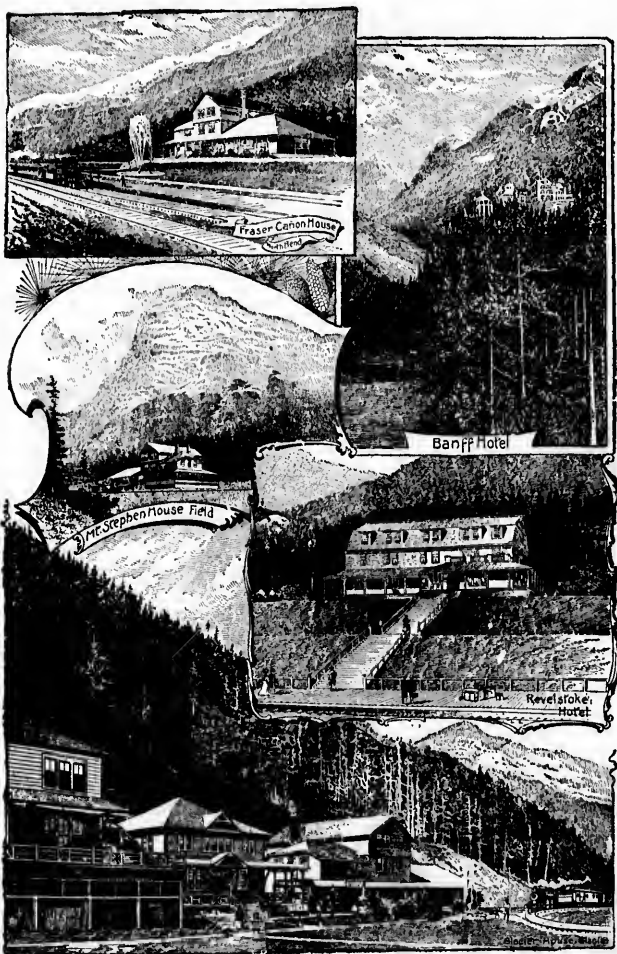
E.

O.  
C.



F

# Canadian Pacific Mountain Hotels



FRASER CANON HOUSE, North Bend

BANFF SPRINGS HOTEL (From Rear)

MT. STEPHEN HOUSE, Field

HOTEL REVELSTOKE, Revelstoke, B.C.

THE GLACIER HOUSE, Glacier





