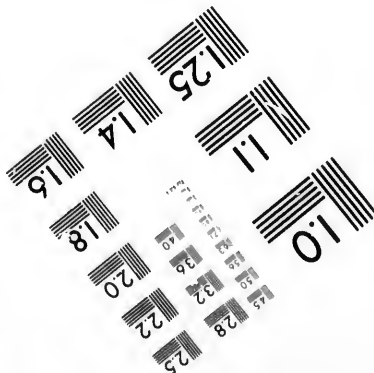
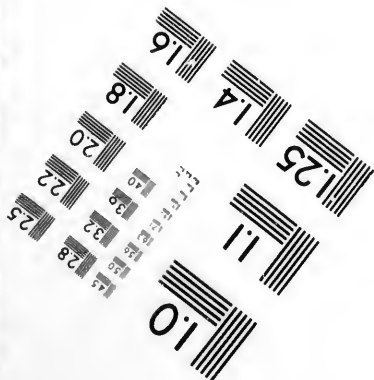
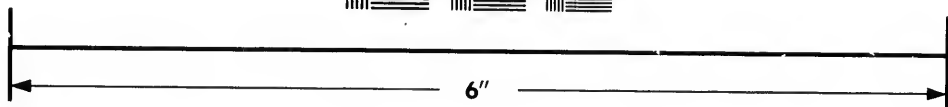
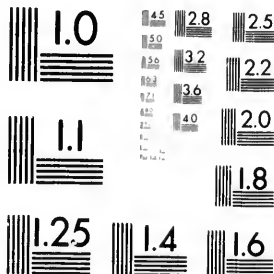


**IMAGE EVALUATION  
TEST TARGET (MT-3)**



Photographic  
Sciences  
Corporation

23 WEST MAIN STREET  
WEBSTER, N.Y. 14580  
(716) 872-4503

Ca

15 28  
16 32 25  
18 22  
19 20

**CIHM/ICMH  
Microfiche  
Series.**

**CIHM/ICMH  
Collection de  
microfiches.**

10



Canadian Institute for Historical Microreproductions

Institut canadien de microreproductions historiques

**1980**

Technical and Bibliographic Notes/Notes techniques et bibliographiques

The Institute has attempted to obtain the best original copy available for filming. Features of this copy which may be bibliographically unique, which may alter any of the images in the reproduction, or which may significantly change the usual method of filming, are checked below.

L'Institut a microfilmé le meilleur exemplaire qu'il lui a été possible de se procurer. Les détails de cet exemplaire qui sont peut-être uniques du point de vue bibliographique, qui peuvent modifier une image reproduite, ou qui peuvent exiger une modification dans la méthode normale de filmage sont indiqués ci-dessous.

- Coloured covers/  
Couverture de couleur
- Covers damaged/  
Couverture endommagée
- Covers restored and/or laminated/  
Couverture restaurée et/ou pelliculée
- Cover title missing/  
Le titre de couverture manque
- Coloured maps/  
Cartes géographiques en couleur
- Coloured ink (i.e. other than blue or black)/  
Encre de couleur (i.e. autre que bleue ou noire)
- Coloured plates and/or illustrations/  
Planches et/ou illustrations en couleur
- Bound with other material/  
Relié avec d'autres documents
- Tight binding may cause shadows or distortion along interior margin/  
La reliure serrée peut causer de l'ombre ou de la distortion le long de la marge intérieure
- Blank leaves added during restoration may appear within the text. Whenever possible, these have been omitted from filming/  
Il se peut que certaines pages blanches ajoutées lors d'une restauration apparaissent dans le texte, mais, lorsque cela était possible, ces pages n'ont pas été filmées.
- Additional comments:/  
Commentaires supplémentaires:

- Coloured pages/  
Pages de couleur
- Pages damaged/  
Pages endommagées
- Pages restored and/or laminated/  
Pages restaurées et/ou pelliculées
- Pages discoloured, stained or foxed/  
Pages décolorées, tachetées ou piquées
- Pages detached/  
Pages détachées
- Showthrough/  
Transparence
- Quality of print varies/  
Qualité inégale de l'impression
- Includes supplementary material/  
Comprend du matériel supplémentaire
- Only edition available/  
Seule édition disponible
- Pages wholly or partially obscured by errata slips, tissues, etc., have been refilmed to ensure the best possible image/  
Les pages totalement ou partiellement obscurcies par un feuillet d'errata, une pelure, etc., ont été filmées à nouveau de façon à obtenir la meilleure image possible.

This item is filmed at the reduction ratio checked below/  
Ce document est filmé au taux de réduction indiqué ci-dessous.

10X	14X	18X	22X	26X	30X
<input type="checkbox"/>	<input type="checkbox"/>	<input type="checkbox"/>	<input checked="" type="checkbox"/>	<input type="checkbox"/>	<input type="checkbox"/>
12X	16X	20X	24X	28X	32X

The copy filmed here has been reproduced thanks to the generosity of:

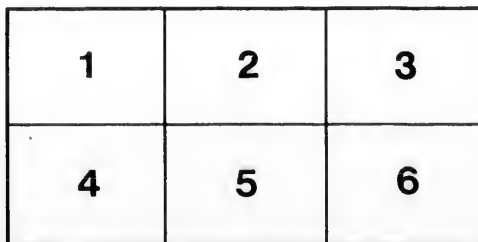
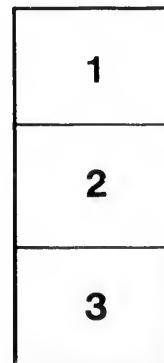
National Library of Canada

The images appearing here are the best quality possible considering the condition and legibility of the original copy and in keeping with the filming contract specifications.

Original copies in printed paper covers are filmed beginning with the front cover and ending on the last page with a printed or illustrated impression, or the back cover when appropriate. All other original copies are filmed beginning on the first page with a printed or illustrated impression, and ending on the last page with a printed or illustrated impression.

The last recorded frame on each microfiche shall contain the symbol  $\rightarrow$  (meaning "CONTINUED"), or the symbol  $\nabla$  (meaning "END"), whichever applies.

Maps, plates, charts, etc., may be filmed at different reduction ratios. Those too large to be entirely included in one exposure are filmed beginning in the upper left hand corner, left to right and top to bottom, as many frames as required. The following diagrams illustrate the method:



L'exemplaire filmé fut reproduit grâce à la générosité de:

Bibliothèque nationale du Canada

Les images suivantes ont été reproduites avec le plus grand soin, compte tenu de la condition et de la netteté de l'exemplaire filmé, et en conformité avec les conditions du contrat de filmage.

Les exemplaires originaux dont la couverture en papier est imprimée sont filmés en commençant par le premier plat et en terminant soit par la dernière page qui comporte une empreinte d'impression ou d'illustration, soit par le second plat, selon le cas. Tous les autres exemplaires originaux sont filmés en commençant par la première page qui comporte une empreinte d'impression ou d'illustration et en terminant par la dernière page qui comporte une telle empreinte.

Un des symboles suivants apparaîtra sur la dernière image de chaque microfiche, selon le cas: le symbole  $\rightarrow$  signifie "A SUIVRE", le symbole  $\nabla$  signifie "FIN".

Les cartes, planches, tableaux, etc., peuvent être filmés à des taux de réduction différents. Lorsque le document est trop grand pour être reproduit en un seul cliché, il est filmé à partir de l'angle supérieur gauche, de gauche à droite, et de haut en bas, en prenant le nombre d'images nécessaire. Les diagrammes suivants illustrent la méthode.

Can. Pam. Hubbert, J.

NATIONAL LIBRARY  
CANADA  
BIBLIOTHÈQUE NATIONALE

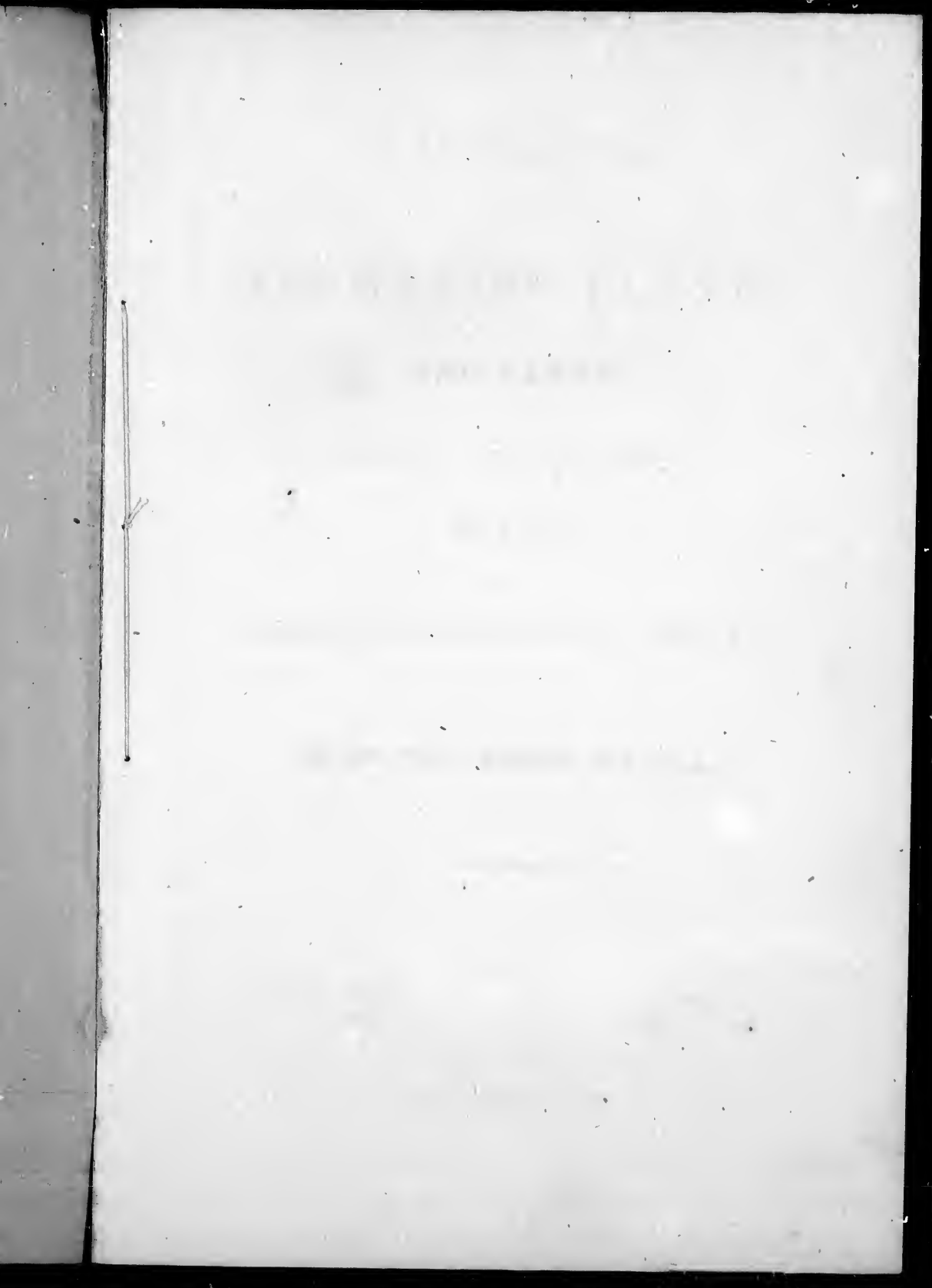
# CATALOGUE

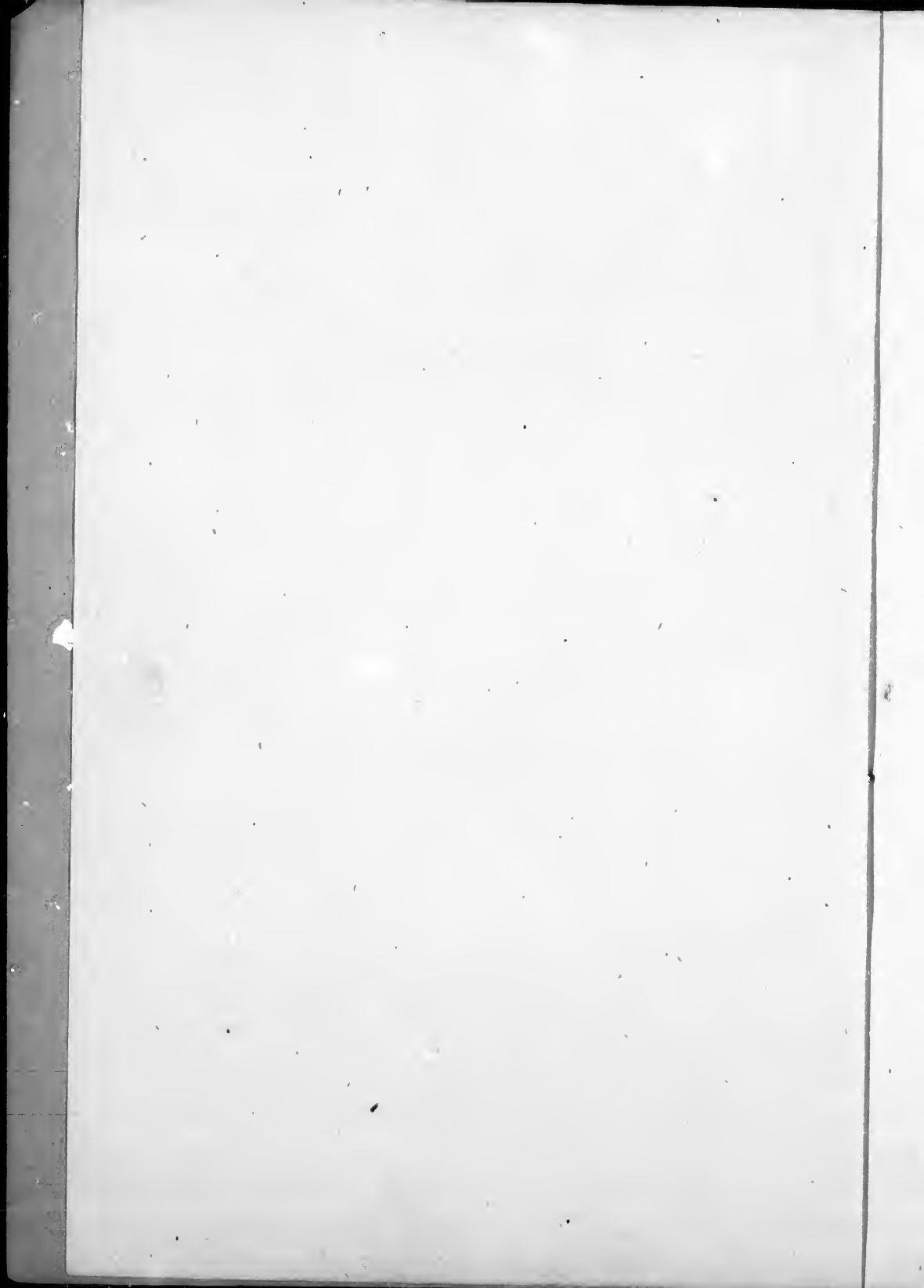
NATIONAL LIBRARY  
CANADA  
BIBLIOTHÈQUE NATIONALE

OF

# CANADIAN PLANTS.









8

CATALOGUE  
OF THE  
FLOWERING PLANTS  
AND FERNS

INDIGENOUS TO, OR NATURALIZED IN,

*Canada.*

TO

FACILITATE THE EXCHANGING OF SPECIMENS, ETC.

BY

**THE REV. PROF. HUBBERT, M.A., PH.D.**

---

MONTREAL :

DAWSON BROTHERS, No. 23 GREAT ST. JAMES STREET;  
G. MERCER ADAM, 61 KING STREET EAST, TORONTO.

PRINTED BY J. C. BECKET, 84 GREAT ST. JAMES STREET.

*PRICE FIFTEEN CENTS.*

THE UNIVERSITY OF CHICAGO

PHYSICS DEPARTMENT

1954

RESEARCH REPORT

PHYSICS DEPARTMENT

## PREFACE.

---

THOUGH no apology is necessary for an attempt at a systematic enumeration of our plants, the compiler desires briefly to state the motives that led him to undertake the work.

Having been for some time engaged in the preparation of a CANADIAN FLORA, on the plan of De Candolle's "Flore Française," he of course felt anxious to embody in it, not only the result of the researches of our earlier Botanists, like Pursh, Michaux, Hooker, &c., but also the scattered knowledge stored away in the herbariums and note-books of a large number of careful, conscientious investigators, who, by working up the Botany of their own localities, are adding year by year to our knowledge of the subject. Resolved before finally correcting the manuscript for the press, to make an appeal to the Students of Canadian Botany for any additional facts regarding the distribution and variation of species, influence of latitude and altitude, local causes, &c.: the question next arose in what way this could best be done. The plan of a numbered Catalogue was fixed upon, with the hope that while it rendered the transmission of information about the species occurring in any locality easy, it would also prove useful to amateur Botanists, by limiting the number of names among which they would require to search, in determining specimens; and to persons forming herbariums, by aiding them in effecting exchanges.

The author earnestly solicits any information that will assist in securing accuracy in the "Flora". He will gladly examine, name, and return at his own expense, plants sent to him from any part of Canada; and so far as the nature of the work will allow, all assistance received will be carefully acknowledged. In the Catalogue, the nomenclature of Professor Gray has been adopted as that best known. This has been the case even where a somewhat different arrangement would have been employed in a larger work.

Accuracy in a list like this is a more important consideration than the grouping of species and a great deal of pains has been taken to secure it.

The writings of Pursh, Michaux, Hooker, Gray, Torrey, Provencher, Brunet, and others have been consulted; the lists published in the Canadian Journal and Naturalist, Annals of the Botanical Society of Canada, American Journal

of Science, Proceedings of the Boston Natural History Society, Edinburgh New Philosophical Journal, Report of the Canadian Geological Survey, etc, along with those furnished by a large number of correspondents compared; and in nearly every case of doubt, the result checked by the examination of specimens. Valuable assistance has been given in the true unselfish spirit of science by the Rev. Prof. Hincks, D. A. P. Watt, Esq., W. Macoun, Esq., and others. Absolute reliability however is scarcely attainable at once, where there has been so much guessing at truth in some of the local reports, and by the kind permission of the Editors of the Canadian Journal and Canadian Naturalist, an occasional annotated supplemental list may be published in those magazines, and notice given of species rejected on a better acquaintance with their range.

There are two classes of plants to be disposed of in addition to those which may certainly and properly be termed Canadian. A plant is sometimes cited as having been met with in some spot where no subsequent explorer has ever succeeded in finding it. Has this arisen from a mistake on the part of the botanist? Or has the plant been driven from its home, by the march of cultivation, draining, and other changes? Circumstances cannot always determine. In many cases we can say positively that the authority is so good as to warrant us in admitting the species. Generally however such plants must be held for the present as doubtful. These, with a few border species growing in such positions as to render their occurrence in Canada almost certain, have been gathered into a separate group on page 27. They should be specially looked for along the United States frontier. Finally, a second separate list contains those occasional stragglers, which are found sparingly escaped from gardens, and maintaining a precarious existence; usually disappearing after two or three years.

---

The Pamphlet was originally intended only for gratuitous distribution: but it has been thought better to put a few copies into the hands of the Booksellers, as in some cases this will render it more easily accessible.

ST. FRANCIS COLLEGE,  
January 13, 1867.

## CATALOGUE.

### RANUNCULACEÆ.

#### ATRAGENE

1. Americana, Sims.

#### CLEMATIS

2. cylindrica, Sims.
3. Virginiana, L.

#### ANEMONE

4. parviflora, Michx.
5. multifida, DC.
6. cylindrica, Gray.
7. Virginiana, L.
8. Pennsylvanica, L.
9. nemorosa, L.
10. narcissiflora, L.

#### HEPATICA

11. triloba, Chaix.
12. acutiloba, DC.

#### THALICTRUM

13. anemonoides, Michx.
14. dioicum, L.
15. Cornuti, L.
16. alpinum, L.

#### RANUNCULUS

17. aquatilis, L., vars. a. divaricatus, Gray and b. tricophyllus, Chaix.
18. Purshii, Richards.
19. Flammula, L.
20. reptans, L.
21. pusillus, Poir.
22. Cymbalaria, Pursh.
23. rhomboideus, Goldie.
24. cardiophyllus, Hook.
25. affinis, R. Br.
26. abortivus, L.  
b. micranthus.
27. brevicaulis, Hook.
28. sceleratus, L.
29. recurvatus, Poir.
30. Pennsylvanicus, L.
31. fascicularis, Muhl.
32. repens, L.
33. bulbosus, L.
34. acris, L.

#### CALTHA

35. palustris, L.
36. natans, Pall.

#### TROLLIUS

37. Americanus, DC.

#### COPTIS

38. trifolia, Salisb.

#### AQUILEGIA

39. Canadensis, L.
40. vulgaris, L.

#### DELPHINIUM

41. exaltatum, Ait.

#### HYDRASTIS

42. Canadensis, L.

#### ACTÆA

43. spicata, L., vars. a. rubra, and b. alba, Michx.

#### CIMICIFUGA

44. racemosa, Ell.

### MAGNOLIACEÆ.

#### LIRIODENDRON

45. Tulipifera, L.

### MENISPERMACEÆ.

#### MENISPERMUM

46. Canadense, L.

### BERBERIDACEÆ.

#### CAULOPHYLLUM

47. thalictroides, Michx.

#### JEFFERSONIA

48. diphylla, Pers.

#### PODOPHYLLUM

49. peltatum, L.

### CABOMBACEÆ.

#### BRASENIA

50. peltata, Pursh.

### NYMPHÆACEÆ.

#### NYMPHÆA

51. odorata, Ait.

#### NUPHAR

52. advena, Ait.
53. Kalmiana, Pursh.

**SARRACENIACEÆ.****SARRACENIA**

- 54.
- purpurea*
- , L.

**PAPAVERACEÆ.****PAPAVÉR**

- 55.
- nudicaule*
- , L.
- 
- 56.
- somniferum*
- , L.
- 
- 57.
- Rhæas*
- , L.

**CHELIDONIUM**

- 58.
- majus*
- , L.

**SANGUINARIA**

- 59.
- Canadensis*
- , L.

**FUMARIACEÆ.****ADLUMIA**

- 60.
- cirrhusa*
- , Raf.

**DICENTRA**

- 61.
- Cucullaria*
- , DC.
- 
- 62.
- Canadensis*
- , DC.

**CORYDALIS**

- 63.
- aurea*
- , Willd.
- 
- 64.
- glauca*
- , Pursh.

**FUMARIA**

- 65.
- officinalis*
- , L.

**BRASSICACEÆ.****NASTURTIUM**

- 66.
- officinale*
- , R. Br.
- 
- 67.
- sylvestre*
- , R. Br.
- 
- 68.
- palustre*
- , DC.
- 
- 69.
- lacustre*
- , Gray.
- 
- 70.
- armoracia*
- , Fries.

**IODANTHUS**

- 71.
- hesperidoides*
- , Torr. & Gray.

**DENTARIA**

- 72.
- diphylla*
- , L.
- 
- 73.
- maxima*
- , Nutt.
- 
- 74.
- laciniata*
- , Muhl.

**CARDAMINE**

- 75.
- rhomboidea*
- , DC.
- 
- b.
- purpurea*
- , Torr.

- 76.
- rotundifolia*
- , Michx.

- 77.
- pratensis*
- , L.

- 78.
- hirsuta*
- , L.

- b.
- Virginica*
- , Gray.

**ARABIS**

- 79.
- lyrata*
- , L.
- 
- 80.
- patens*
- , Sulliv.
- 
- 81.
- hirsuta*
- , Scop.
- 
- 82.
- lævigata*
- , DC.
- 
- 83.
- Canadensis*
- , L.
- 
- 84.
- petræa*
- , Lam.

**TURRITIS**

- 85.
- glabra*
- , L.
- 
- 86.
- stricta*
- , Graham.
- 
- 87.
- brachycarpa*
- , Torr. and Gray.
- 
- 88.
- patula*
- , Graham.
- 
- 89.
- retrofracta*
- , Hook.

**BARBAREA**

- 90.
- vulgaris*
- , R. Br.
- 
- 91.
- præcox*
- , R. Br.

**ERYSIMUM**

- 92.
- cheiranthoides*
- , L.
- 
- 93.
- lanceolatum*
- , R. Br.

**SISYMBRIUM**

- 94.
- parviflorum*
- , Lam.
- 
- 95.
- officinale*
- , Scop.
- 
- 96.
- canescens*
- , Nutt.

**SINAPIS**

- 97.
- arvensis*
- , L.
- 
- 98.
- nigra*
- , L.

**DRABA**

- 99.
- arabisans*
- , Michx.
- 
- 100.
- incana*
- , L.
- 
- 101.
- Caroliniana*
- , Walt.
- 
- 102.
- verna*
- , L.

**VESICARIA**

- 103.
- arctica*
- , Torr. and Gray.

**CAMELINA**

- 104.
- sativa*
- , Crantz.

**COCHLEARIA**

- 105.
- tridactylitis*
- , DC.

**LEPIDIUM**

- 106.
- Virginicum*
- , L.
- 
- 107.
- intermedium*
- , Gray.

**THLASPI**

- 108.
- arvense*
- , L.
- 
- 109.
- alpestre*
- , L.
- 
- 110.
- montanum*
- , L.

**CAPSELLA**

- 111.
- Bursa-pastoris*
- , Moench.

**CAKILE**

- 112.
- Americana*
- , Nutt.

**CAPPARIDACEÆ.****POLANISIA**

- 113.
- graveolens*
- , Raf.

**VIOLACEÆ.****VIOLA**

- 114.
- rotundifolia*
- , Michx.
- 
- 115.
- lanceolata*
- , L.
- 
- 116.
- primulæfolia*
- , L.
- 
- 117.
- blanda*
- , Willd.
- 
- 118.
- palustris*
- , L.
- 
- 119.
- Selkirkii*
- , Goldie.
- 
- 120.
- cucullata*
- , Ait.
- 
- b.
- palmata*
- , Gray.
- 
- 121.
- villosa*
- , Walt., Nutt.
- 
- 122.
- sagittata*
- , Ait.

## VIOLA

123. *pedata*, L.  
 124. *rostrata*, Pursh.  
 125. *Muhlenbergii*, Torr.  
 126. *striata*, Ait.  
 127. *Canadensis*, L.  
 128. *pubescens*, Ait.  
     *b. eriocarpa*, Nutt.  
 129. *hastata*, Michx.  
 130. *tricolor*, L.

## CISTACEÆ.

## HELIANTHEMUM

131. *Canadense*, Michx.  
 132. *corymbosum*, Michx.

## HUDSONIA

133. *tomentosa*, Nutt.

## LECHEA

134. *major*, Michx.  
 135. *minor*, Lam.

## DROSERACEÆ.

## DROSERA

136. *rotundifolia*, L.  
 137. *longifolia*, L.  
 138. *linearis*, Goldie.

## PARNASSIACEÆ.

## PARNASSIA

139. *palustris*, L.  
 140. *Caroliniana*, Michx.  
 141. *parviflora*, DC.

## HYPERICACEÆ.

## HYPERICUM

142. *pyramidatum*, Ait.  
 143. *Kalmianum*, L.  
 144. *perforatum*, L.  
 145. *corymbosum*, Muhl.  
 146. *ellipticum*, Hook.  
 147. *sphaerocarpon*, Michx.  
 148. *mutilum*, L.  
 149. *Canadense*, L.  
 150. *Sarothra*, Michx.

## ELODEA

151. *Virginica*, Nutt.

## CARYOPHYLLACEÆ.

## SAPONARIA

152. *officinalis*, L.

## SILENE

153. *stellata*, Ait.  
 154. *inflata*, Smith.

## SILENE

155. *Virginica*, L.  
 156. *regia*, Sims.  
 157. *Antirrhina*, L.  
 158. *noctiflora*, L.  
 159. *acaulis*, L.

## AGROSTEMMA

160. *Githago*, L.

## HONKENYA

161. *peploides*, Ehrhart.

## ALSINE

162. *Michauxii*, Fenzl.  
 163. *Grœnlandica*, Fenzl.

## ARENARIA

164. *serpyllifolia*, L.  
 165. *stricta*, Michx.  
 166. *arctica*, Steven.

## MœHRINGIA

167. *lateriflora*, Fenzl.

## STELLARIA

168. *media*, Smith.  
 169. *longifolia*, Muhl.  
 170. *longipes*, Goldie.  
 171. *uliginosa*, Murr.  
 172. *crassifolia*, Ehrhart.  
 173. *brealis*, Bigelow.

## CERASTIUM

174. *vulgatum*, L.  
 175. *viscosum*, L.  
 176. *nutans*, Raf.  
 177. *oblongifolium*, Torr.  
 178. *arvense*, L.

## SAGINA

179. *procumbens*, L.  
 180. *nodosa*, Fenzl.

## SPERGULARIA

181. *rubra*, Pers.  
     *b. marina*, Gray.

## SPERGULA

182. *arvensis*, L.

## ANYCHIA

183. *dichotoma*, Michx.

## MOLLUGO

184. *verticillata*, L.

## PORTULACACEÆ.

## PORTULACA

185. *oleracea*, L.

## CLAYTONIA

186. *Virginica*, L.  
 187. *Caroliniana*, Michx.

## MALVACEÆ.

## MALVA

188. *rotundifolia*, L.  
 189. *sylvestris*, L.

**HIBISCUS**

190. Moscheutos, L.

**TILIACEÆ.****TILIA**

191. Americana, L.
- 
- b. pubescens, Gray.

**LINACEÆ.****LINUM**

192. Virginianum, L.
- 
193. perenne, L.

**OXALIDACEÆ.****OXALIS**

194. Acetosella, L.
- 
195. stricta, L.
- 
196. corniculata, L.

**GERANIACEÆ.****GERANIUM**

197. maculatum, L.
- 
198. Carolinianum, L.
- 
199. Robertianum, L.

**BALSAMINACEÆ.****IMPATIENS**

200. pallida, Nutt.
- 
201. fulva, Nutt.

**LIMNANTHACEÆ.****FLCERKEA**

202. proserpinacoides, Willd.

**RUTACEÆ.****ZANTHOXYLUM**

203. Americanum, Mill.

**ANACARDIACEÆ.****RHUS**

204. typhina, L.
- 
205. glabra, L.
- 
206. copallina, L.
- 
207. venenata, DC.
- 
208. Toxicodendron, L.
- 
209. aromatica, Ait.

**VITACEÆ.****VITIS**

210. Labrusca, L.
- 
211. æstivalis, Michx.
- 
212. cordifolia, Michx.
- 
- b. riparia, Gray.

**AMPELOPSIS**

213. quinquefolia, Michx.

**RHAMNACEÆ.****RHAMNUS**

214. alnifolius, L'Her.

**CEANOTHUS**

215. Americanus, L.
- 
216. ovalis, Bigelow.

**CELASTRACEÆ.****CELASTRUS**

217. scandens, L.

**EUONYMUS**

218. atropurpureus, Jacq.
- 
219. Americanus, L.
- 
220. obovatus, Nutt.

**SAPINDACEÆ.****STAPHYLEA**

221. trifolia, L.

**ACER**

222. Pennsylvanicum, L.
- 
223. spicatum, Lam.
- 
224. saccharinum, Wang.
- 
- b. nigrum, Gray.
- 
225. dasycarpum, Ehrhart.
- 
226. rubrum, L.

**NEGUNDO**

227. aceroides, Mönch.

**POLYGALACÆ.****POLYGALA**

228. fastigiata, Nutt.
- 
229. Nuttallii, Torr. & Gray.
- 
230. verticillata, L.
- 
231. Senega, L.
- 
- b. latifolia, Torr. & Gray.
- 
232. polygama, Walt.
- 
233. paucifolia, Willd.

**FABACEÆ.****LUPINUS**

234. perennis, L.



- TRIFOLIUM**  
 235. *arvense*, L.  
 236. *pratense*, L.  
 237. *repens*, L.  
 238. *agrarium*, L.  
 239. *minus*, Rellh.  
 240. *procumbens*, L.  
**MELILOTUS**  
 241. *officinalis*, Willd.  
 242. *alba*, Lam.  
 243. *lupulina*, L.  
**ROBINIA**  
 244. *Pseudacacia*, L.  
 245. *viscosa*, Vent.  
**ASTRAGALUS**  
 246. *Canadensis*, L.  
 247. *Labradoricus*, DC.  
 248. *alpinus*, L.  
 249. *Cooperi*, Gray.  
**OXYTROPIS**  
 250. *Lambertii*, Pursh.  
**HEDYSARUM**  
 251. *boreale*, Nutt.  
**DESMODIUM**  
 252. *nudiflorum*, DC.  
 253. *acuminatum*, DC.  
 254. *pauciflorum*, DC.  
 255. *cuspidatum*, Torr. & Gray.  
 256. *Dillenii*, Darlingt.  
 257. *paniculatum*, DC.  
 258. *Canadense*, DC.  
**LESPEDEZA**  
 259. *repens*, Torr. & Gray.  
 260. *violacea*, Pers.  
 261. *hirta*, Ell.  
 262. *capitata*, Michx.  
**VICIA**  
 263. *sativa*, L.  
 264. *tetrasperma*, L.  
 265. *hirsuta*, Koch.  
 266. *Cracca*, L.  
 267. *Caroliniana*, Walt.  
 268. *Americana*, Muhl.  
**LATHYRUS**  
 269. *maritimus*, Bigelow.  
 270. *venosus*, Muhl.  
 271. *ochroleucus*, Hook.  
 272. *palustris*, L.  
 273. *myrtifolius*, Muhl.  
**PHASEOLUS**  
 274. *perennis*, Walt.  
 275. *diversifolius*, Pers.  
 276. *helvolus*, L.  
**APIOS**  
 277. *tuberosa*, Moench.  
**AMPHICARPÆA**  
 278. *monoica*, Nutt.  
**BAPTISIA**  
 279. *tinctoria*, R. Br.  
**BAPTISIA**  
 280. *leucantha*, Torr. & Gray.  
 281. *alba*, R. Br.  
**GYMNOCLADUS**  
 282. *Canadensis*, Lam.  
**GLEDITSCHIA**  
 283. *triacanthos*, L.  
**ROSACEÆ.**  
**PRUNUS**  
 284. *Americana*, Marsh.  
 285. *pumila*, L.  
 286. *Pennsylvanica*, L.  
 287. *Virginiana*, L.  
 288. *serotina*, Ehrhart.  
**SPIRÆA**  
 289. *opulifolia*, L.  
 290. *salicifolia*, L.  
 291. *tomentosa*, L.  
**GILLENIA**  
 292. *trifoliata*, Moench.  
**AGRIMONIA**  
 293. *Eupatoria*, L.  
 294. *parviflora*, Ait.  
**SANGUISORBA**  
 295. *Canadensis*, L.  
**SIBBALDIA**  
 296. *procumbens*, L.  
**DRYAS**  
 297. *Drummondii*, Hook.  
 298. *octopetala*, L.  
**GEUM**  
 299. *album*, Gmelin.  
 300. *macrophyllum*, Willd.  
 301. *Virginianum*, L.  
 302. *strictum*, Ait.  
 303. *rivale*, L.  
 304. *triflorum*, Pursh.  
 305. *geniculatum*, Michx.  
**WALDSTEINIA**  
 306. *fragarioides*, Tratt.  
**POTENTILLA**  
 307. *Norvegica*, L.  
 308. *Canadensis*, L.  
 309. *argentea*, L.  
 310. *Pennsylvanica*, L.  
 311. *arguta*, Pursh.  
 312. *Anserina*, L.  
 313. *fruticosa*, L.  
 314. *tridentata*, Ait.  
 315. *palustris*, Scop.  
**FRAGARIA**  
 316. *Virginiana*, Ehrhart.  
 317. *vesca*, L.  
**DALIBARDA**  
 318. *repens*, L.  
**RUBUS**  
 319. *odoratus*, L.  
 320. *Nutkanus*, Moçino.

**RUBUS**

321. *Chamæmorus*, L.  
 322. *triflorus*, Richards.  
 323. *strigosus*, Michx.  
 324. *occidentalis*, L.  
 325. *villosus*, Ait.  
 326. *Canadensis*, L.  
 327. *hispidus*, L.  
 328. *arcticus*, L.

**ROSA**

329. *Carolina*, L.  
 330. *lucida*, Ehrhart.  
 331. *blanda*, Ait.  
 332. *rubiginosa*, L.  
 333. *micrantha*, Smith.  
 334. *stricta*, Lindl.

**CRATÆGUS**

335. *coccinea*, L.  
 336. *tomentosa*, L.  
     *b. pyrifolia*, Gray.  
     *c. punctata*, Gray.  
 337. *Crus-Galli*, L.

**PYRUS**

338. *coronaria*, S.  
 339. *arbutifolia*, L.  
 340. *Americana*, DC.

**AMELANCHIER**

341. *Canadensis*, Torr. & Gray,  
*vars. a. Botryapium*, *b. rotundifolia*,  
*c. oblongifolia*,  
*and d. oligocarpa* of Gray.

**MELASTOMACEÆ.****RHEXIA**

342. *Virginica*, L.

**LYTHRACEÆ.****LYTHRUM**

343. *alatum*, Pursh.  
 344. *Salicaria*, L.

**NESÆA**

345. *verticillata*, H.B.K.

**ONAGRACEÆ.****EPILOBIUM**

346. *angustifolium*, L.  
 347. *alpinum*, L.  
     *b. majus*, Gray.  
 348. *palustre*, L.  
     *b. lineare*, Gray.  
 349. *molle*, Torr.  
 350. *tetragonum*, L.  
 351. *coloratum*, Muhl.

**GENOTHERA**

352. *biennis*, L., *vars. a. muricata*,  
*b. parvifolia and c. cruciata*  
 of Torr. & Gray.  
 353. *glauca*, Michx.  
 354. *chrysantha*, Michx.  
 355. *pumila*, L.

**GAURA**

356. *biennis*, L.

**LUDWIGIA**

357. *alternifolia*, L.  
 358. *palustris*, Ell.

**CIRCÆA**

359. *Lutetiana*, L.  
 360. *alpina*, L.

**PROSPERPINACA**

361. *palustris* L.

**MYRIOPHYLLUM**

362. *spicatum*, L.  
 363. *verticillatum*, L.  
 364. *heterophyllum*, Michx.  
 365. *tenellum*, Bigelow.

**HIPPURIS**

366. *vulgaris*, L.

**GROSSULACEÆ.****RIBES**

367. *Cynosbati*, L.  
 368. *hirtellum*, Michx.  
 369. *rotundifolium*, Michx.  
 370. *lacustre*, Poir.  
 371. *prostratum*, L'Her.  
 372. *oxycanthoides*, L.  
 373. *floridum*, L.  
 374. *rubrum*, L.

**CUCURBITACEÆ.****SICYOS**

375. *angulatus*, L.

**ECHINOCYSTIS**

376. *lobata*, Torr. & Gray.

**CRASSULACEÆ.****SEDUM**

377. *ternatum*, Gray.  
 378. *Rhodiola*, DC.

**PENTHORUM**

379. *sedoides*, L.

**SAXIFRAGACEÆ.****SAXIFRAGA**

380. *oppositifolia*, L.  
 381. *stellaris*, L.  
 382. *rivularis*, L.

**SAXIFRAGA**

- 383. aizoides, L.
- 384. tricuspidata, Retz.
- 385. nivalis, L.
- 386. Aizoon, Jacq.
- 387. Virginiensis, Michx.
- 388. Pennsylvanica, L.
- 389. Grœnlandica, H. B. K.

**HEUCHERA**

- 390. Americana, L.

**MITELLA**

- 391. diphylla, L.
- 392. nuda, L.

**TIARELLA**

- 393. cordifolia, L.

**CHRYSOSPLENIUM**

- 394. Americanum, Schweib.

**HAMAMELACEÆ.****HAMAMELIS**

- 395. Virginica, L.

**APIACEÆ.****HYDROCOTYLE**

- 396. Americana, L.

**SANICULA**

- 397. Canadensis, L.
- 398. Marilandica, L.

**DAUCUS**

- 399. *Carota*, L.

**HERACLEUM**

- 400. lanatum, Michx.

**PASTINACA**

- 401. *sativa*, L.

**ANGELICA**

- 402. lucida, L.

**ARCHANGELICA**

- 403. atropurpurea, Hoffm.
- 404. peregrina, Nutt.

**CONIOSELINUM**

- 405. Canadense, Torr. & Gray.

**LIGUSTICUM**

- 406. Scoticum, L.
- 407. actœifolium, Michx.

**THASPIUM**

- 408. barbinode, Nutt.
- 409. aureum, Nutt.
  - b. apterum, Nutt.
- 410. trifoliatum, Gray.
  - b. atropurpureum, T. & G.
  - c. apterum, Gray.

**ZIZIA**

- 411. integerrima, DC.

**CICUTA**

- 412. maculata, L.
- 413. bulbifera, L.

**SIUM**

- 414. lineare, Michx.
- 415. latifolium, L.

**CRYPTOTÆNIA**

- 416. Canadensis, DC.

**OSMORRHIZA**

- 417. longistylis, DC.
- 418. brevistylis, DC.

**CONIUM**

- 419. *maculatum*, L.

**ERIGENIA**

- 420. bulbosa, Nutt.

**ARALIACEÆ.****ARALIA**

- 421. racemosa, L.
- 422. hispida, Michx.
- 423. nudicaulis, L.
- 424. quinquefolia, Gray.
- 425. trifolia, Gray.

**CORNACEÆ.****CORNUS**

- 426. Canadensis, L.
- 427. florida, L.
- 428. circinata, L'Her.
- 429. sericea, L.
- 430. stolonifera, Michx.
- 431. Sœcica, L.
- 432. paniculata, L'Her.
- 433. alternifolia, L.

**CAPRFOLIACEÆ.****LINNÆA**

- 434. borealis, Gronov.

**SYMPHORICARPUS**

- 435. occidentalis, R. Br.
- 436. racemosus, Michx.
- 437. vulgaris, Michx.

**LONICERA**

- 438. parviflora, Lam.
- 439. hirsuta, Eaton.
- 440. involucrata, H.B.K.
- 441. ciliata, Muhl.
- 442. cœrulea, L.
- 443. oblongifolia, Muhl.

**DIERVILLA**

- 444. trifida, Moench.

**TRIOSTEUM**

- 445. perfoliatum, L.

**SAMBUCUS**

- 446. Canadensis, L.
- 447. pubens, Michx.

**VIBURNUM**

- 448. nudum, L.
- 449. prunifolium, L.

## VIBURNUM

450. *Lentago*, L.  
 451. *dentatum*, L.  
 452. *pubescens*, Pursh.  
 453. *acerifolium*, L.  
 454. *pauciflorum*, Pylaic.  
 455. *Opulus*, L.  
 456. *lantanoides*, Michx.

## RUBIACEÆ.

## GALIUM

457. *Aparine*, L.  
 458. *asprellum*, L.  
 459. *concinnum*, Torr. & Gray.  
 460. *trifidum*, L.  
 461. *triflorum*, Michx.  
 462. *circæzans*, Michx.  
 463. *lanceolatum*, Torr.  
 464. *boreale*, L.

## CEPHALANTHUS

465. *occidentalis*, L.

## MITCHELLA

466. *repens*, L.

## OLDENLANDIA

467. *purpurea*, Gray,  
     *b. lonigfolia*, Gray.  
     *c. ciliolata*, Gray.  
 468. *cærulea*, Gray.

## VALERIANACEÆ.

## VALERIANA

469. *sylvatica*, Richards.  
 470. *edulis*, Nutt.

## - DIPSACEÆ.

## DIPSACUS

471. *sylvestris*, Mill.

## ASTERACEÆ.

## VERNONIA

472. *Noveboracensis*, Willd.

## LIATRIS

473. *squarrosa*, Willd.  
 474. *cylindracea*, Michx.  
 475. *scariosa*, Willd.  
 476. *spicata*, Willd.

## EUPATORIUM

477. *purpureum*, L.  
 478. *rotundifolium*, L.  
 479. *perfoliatum*, L.  
 480. *ageratoides*, L.

## NARDOSMIA

481. *palmata*, Hook.  
 482. *sagittata*, Hook.  
 483. *frigida*, Hook.

## TUSSILAGO

484. *Farfara*, L.

## ADNOCaulon

485. *bicolor*, Hook.

## SERICOCARPUS

486. *solidagineus*, Nees.

## ASTER

487. *corymbosus*, Ait.  
 488. *macrophyllus*, L.  
 489. *Radula*, Ait.  
 490. *patens*, Ait.  
 491. *lævis*, L.  
 492. *lævigatus*, Willd.  
 493. *cyaneus*, Hoffm.  
 494. *azureus*, Lindl.  
 495. *undulatus*, L.  
 496. *cordifolius*, L.  
 497. *sagittifolius*, Willd.  
 498. *ericoides*, L.  
 499. *multiflorus*, Ait.  
 500. *dumosus*, L.  
 501. *Tradescanti*, L.  
 502. *miser*, L., Ait.  
 503. *Lamarckianus*, Nees.  
 504. *simplex*, Willd.  
 505. *tenuifolius*, L.  
 506. *carneus*, Nees.  
 507. *æstivus*, Ait.  
 508. *borealis*, Provencher.  
 509. *Novi-Belgii*, L.  
 510. *longifolius*, Lam.  
 511. *puniceus*, L.  
 512. *preanthoides*, Muhl.  
 513. *oblongifolius*, Nutt.  
 514. *Novæ-Angliæ*, L.  
 515. *graminifolius*, Pursh.  
 516. *acuminatus*, Michx.  
 517. *nemoralis*, Ait.  
 518. *ptarmicoides*, Torr. & Gr.

## ERIGERON

519. *Canadense*, L.  
 520. *bellidifolium*, Muhl.  
 521. *Philadelphicum*, L.  
 522. *glabellum*, Nutt.  
 523. *annuum*, Pers.  
 524. *strigosum*, Muhl.

## DIPLOPAPPUS

525. *linariifolius*, Hook.  
 526. *umbellatus*, Torr. & Gr.  
 527. *cornifolius*, Darl.

## BOLTONIA

528. *glastifolia*, L'Her.

## SOLIDAGO

529. *squarrosa*, Muhl.  
 530. *bicolor*, L.  
 531. *latifolia*, L.  
 532. *cesia*, L.

## SOLIDAGO

533. *puberula*, Nutt.  
 534. *stricta*, Ait.  
 535. *speciosa*, Nutt.  
 536. *Virga-aurea*, L.  
 • *b. alpina*, Bigel.  
 537. *humilis*, Pursh.  
 538. *thyrsoides*, E. Meyer.  
 539. *rigida*, L.  
 540. *sempervirens*, L.  
 541. *neglecta*, Torr. & Gr.  
 542. *patula*, Muhl.  
 543. *arguta*, Ait.  
 544. *Muhlenbergii*, Torr. & Gr.  
 545. *altissima*, L.  
 546. *odora*, Ait.  
 547. *memoralis*, Ait.  
 548. *Canadensis*, L.  
 549. *serotina*, Ait.  
 550. *gigantea*, Ait.  
 551. *lanceolata*, L.  
 552. *tenuifolia*, Pursh.

## INULA

555. *Helenium*, L.

## POLYMNIA

554. *Canadensis*, L.

## AMBROSIA

555. *trifida*, L.  
 556. *artemisiifolia*, L.

## XANTHIUM

557. *strumarium*, L.  
 • *b. echinatum*, Gray

## RUDBECKIA

558. *laciniata*, L.  
 559. *subtomentosa*, Pursh.  
 560. *fulgida*, Ait.  
 561. *hirta*, L.

## HELIANTHUS

562. *microcephalus*, Torr. & Gr.  
 563. *giganteus*, L.  
 564. *strumosus*, L.  
 565. *divaricatus*, L.  
 566. *trachelifolius*, Willd.  
 567. *decapetalus*, L.

## COREOPSIS

568. *verticillata*, L.  
 569. *lanceolata*, L.

## BIDENS

570. *frondosa*, L.  
 571. *connata*, Muhl.  
 572. *cernua*, L.  
 573. *chrysanthemoides*, Michx.  
 574. *Beckii*, Torr.

## HELENIUM

575. *autumnale*, L.

## MARUTA

576. *Catula*, DC.

## ACHILLEA

577. *Millefolium*, L.

## LEUCANTHEMUM

578. *vulgare*, Lam.

## MATRICARIA

579. *inodora*, L.

## TANACETUM

580. *vulgare*, L.  
 581. *Huronense*, Nutt.

## ARTEMISIA

582. *borealis*, Pallas.  
 583. *Canadensis*, Michx.  
 584. *Ludoviciana*, Nutt.  
 585. *vulgaris*, L.  
 586. *biennis*, Willd.

## GNAPHALIUM

587. *decurrens*, Ives.  
 588. *polycephalum*, Michx.  
 589. *uliginosum*, L.

## ANTENNARIA

590. *margaritacea*, R. Br.  
 591. *plantaginifolia*, Hook.  
 592. *carpathica*, R. Br.

## ERECHTHITES

593. *hieracifolia*, Raf.

## CACALIA

594. *suaveolens*, L.  
 595. *atriplicifolia*, L.

## SENECIO

596. *vulgaris*, L.  
 597. *aureus*, L.  
 598. *tomentosus*, Michx.  
 599. *canus*, Hook.  
 600. *pseudo-arnica*, L.

## ARNICA

601. *mollis*, Hook.

## CENTAUREA

602. *Cyanus*, L.

## CNICUS

603. *benedictus*, L.

## CIRSIUM

604. *lanceolatum*, Scop.  
 605. *Pitcheri*, Torr. & Gr.  
 606. *undulatum*, Spreng.  
 607. *discolor*, Spreng.  
 608. *muticum*, Michx.  
 609. *horridulum*, Michx.  
 610. *arvense*, Scop.

## ONOPORDON

611. *acanthium*, L.

## LAPPA

612. *major*, Gært. n.

## CICHORIUM

613. *Intybus*, L.

## KRIGIA

614. *Virginica*, Willd.

## CYNTHIA

615. *Virginica*, Don.

## LEONTODON

616. *autumnale*, L.

## HIERACIUM

617. Canadense, Michx.  
 618. *Pilosella*, L.  
 619. vulgatum, Fries.  
 620. scabrum, Michx.  
 621. longipilum, Torr.  
 622. Gronovii, L.  
 623. venosum, L.  
 624. paniculatum, L.

## NABALUS

625. albus, Hook.  
 626. altissimus, Hook.  
 627. Fraseri, DC.  
 628. nanus, DC.  
 629. racemosus, Hook.

## CREPIS

630. runciatus, Torr. & Gray.

## TARAXACUM

631. Dens-leonis, Desf.

## FACTUCA

632. elongata, Muhl.

## MULGEDIUM

633. pulchellum, Nutt.  
 634. Floridanum, DC.  
 635. leucophæum, DC.

## SONCHUS

636. oleraceus, L.  
 637. asper, Vill.  
 638. urvensis, L.

## LOBELIACEÆ.

## LOBELIA

639. cardinalis, L.  
 640. syphilitica, L.  
 641. puberula, Michx.  
 642. inflata, L.  
 643. spicata, Lam.  
 644. Nuttallii, Rœm. & Sch.  
 645. Kalmii, L.  
 646. Dortmanna, L.

## CAMPANULACEÆ.

## CAMPANULA

647. rotundifolia, L.  
     b. linifolia, Gray.  
 648. aparinoides, Pursh.  
 649. Americana, L.

## SPECULARIA

650. perfoliata, DC.

## ERICACEÆ.

## GAYLUSSACIA

651. resinosa, Torr. & Gr.

## VACCINIUM

652. *Oxycoccus*, L.  
 653. macrocarpon, Ait.

## VACCINIUM

654. *Vitis-Idæa*, L.  
 655. cæspitosum, Michx.  
 656. uliginosum, L.  
 657. Pennsylvanicum, L.  
 658. Canadense, Kalm.  
 659. vacillans, Solander.  
 660. corymbosum, L.  
     b. amœnum, Gray.  
     c. atrocarpum, Gray.

## CHIOGENES

661. hispidula, Torr. & Gr.

## ARCTOSTAPHYLOS

662. Uva-ursi, Spreng.  
 663. alpina, Spreng.

## EPIGÆA

664. repens, L.

## GAULTHERIA

665. procumbens, L.  
 666. racemosa, Gray.

## CASSANDRA

667. calyculata, Don.

## CASSIOPE

668. hypnoides, Don.

## ANDROMEDA

669. polifolia, L.  
 670. tetragona, L.  
 671. ligustrina, Muhl.

## KALMIA

672. latifolia, L.  
 673. angustifolia, L.  
 674. glauca, Ait.

## AZALEA

675. viscosa, L.

## RHODODENDRON

676. Laponicum, Wahl.

## RHODORA

677. Canadensis, L.

## LEDUM

678. latifolium, Ait.

## LOISELEURIA

679. palustre, L.  
 680. procumbens, Desv.

## PYROLA

681. rotundifolia, L.  
 682. elliptica, Nutt.  
 683. chlorantha, Swartz.  
 684. secunda, L.  
 685. minor, L.

## MONESES

686. uniflora, Gray.

## CHIMAPHILLA

687. umbellata, Nutt.  
 688. maculata, Pursh.

## PTEROSPORA

689. Andromedea, Nutt.

## MONOTROPA

690. uniflora, L.  
 691. Hypopitys, L.

## AQUIFOLIACEÆ.

- ILEX  
 692. verticillata, Gray.  
 693. laevigata, Gray.  
 NEMOPANTHES  
 694. Canadensis, DC.

## PLANTAGINACEÆ.

- PLANTAGO  
 695. major, L.  
 696. cordata, Lam.  
 697. maritima, L.  
 698. lanceolata, L.  
 699. media, L.  
 700. Virginica, L.

## PLUMBAGINACEÆ.

- ARMERIA  
 701. vulgaris, Willd.

## PRIMULACEÆ.

- PRIMULA  
 702. farinosa, L.  
 703. Mistassinica, Michx.  
 ANDROSACE  
 704. occidentalis, Pursh.  
 TRIENTALIS  
 705. Americana, Pursh.  
 LYSIMACHIA  
 706. stricta, Ait.  
 707. quadrifolia, Ait.  
 708. ciliata, L.  
 709. lanceolata, Walt.  
 710. longifolia, Pursh.  
 NAUMBURGIA  
 711. thyrsoflora, Reichenb.  
 GLAUX  
 712. maritima, L.  
 SAMOLUS  
 713. Valerandi, L., var.  
 a. Americanus, Gray.

## LENTIBULACEÆ.

- UTRICULARIA  
 714. vulgaris, L.  
 715. minor, L.  
 716. intermedia, Hayne.  
 717. gibba, L.  
 718. subulata, L.  
 719. cornuta, Michx.  
 PINGUIOLA  
 720. vulgaris, L.

## OROBANCHACEÆ.

- EPIPHEGUS  
 721. Virginiana, Bart.  
 CONOPHOLIS  
 722. Americana, Wallr.  
 APHYLLON  
 723. uniflorum, Torr. & Gr.  
 724. fasciculatum, Torr. & Gr.

## SCROPHULARICEÆ.

- VERBASCUM  
 725. Thapsus, L.  
 726. Blattaria, L.  
 727. Lychnitis, L.  
 LINARIA  
 728. Canadensis, Spreng.  
 729. vulgaris, Mill.  
 730. Elatine, Mill.  
 SCROPHULARIA  
 731. nodosa, L.  
 CHELONE  
 732. glabra, L.  
 PENTSTEMON  
 733. pubescens, Solander.  
 MIMULUS  
 734. ringens, L.  
 b. alba, Lawson.  
 735. Jamesii, Torr.  
 GRATIOLA  
 736. Virginiana, L.  
 737. aurea, Muhl.  
 ILYSANTHES  
 738. gratioides, Benth.  
 LIMOSELLA  
 739. aquatica, L., var. a. tenuifolia, Gray.  
 VERONICA  
 740. Virginica, L.  
 741. Anagallis, L.  
 742. Americana, Schwein.  
 743. scutellata, L.  
 b. tomentosa, Mac.  
 744. officinalis, L.  
 745. serpyllifolia, L.  
 746. peregrina, L.  
 747. arvensis, L.  
 748. agrestis, L.  
 749. Buxbaumii, Tenore.  
 750. hederæfolia, L.  
 GERARDIA  
 751. purpurea, L.  
 752. tenuifolia, Vahl.  
 753. flava, L.  
 754. quercifolia, Pursh.  
 755. integrifolia, Gray.  
 756. pedicularia, L.

- CASTILLEIA**  
 757. *coccinea*, Spreng.  
 758. *septentrionalis*, Lindl.
- EUPHRASIA**  
 759. *officinalis*, L.
- RHINANTHUS**  
 760. *Crista-galli*, L.
- PEDICULARIS**  
 761. *Canadensis*, L.  
 762. *lanceolata*, Michx.
- MELAMPYRUM**  
 763. *Americanum*, Michx.  
 764. *pratense*, L.

**ACANTHACEÆ.**

- DIANTHERA**  
 765. *Americana*, L.

**VERBENACEÆ.**

- VERBENA**  
 766. *angustifolia*, L.  
 767. *hastata*, L.  
 768. *urticifolia*, L.
- PHRYMA**  
 769. *Leptostachya*, L.

**LAMIACEÆ.**

- TEUCRIUM**  
 770. *Canadense*, L.
- ISANTHUS**  
 771. *cæruleus*, Michx.
- MENTHA**  
 772. *viridis*, L.  
 773. *piperita*, L.  
 774. *Canadensis*, L.
- LYCOPUS**  
 775. *Virginicus*, L.  
 776. *Europæus*, L.  
     *b. sinuatus*, Gray.
- CUNILA**  
 777. *Mariana*, L.
- PHYCANTHEMUM**  
 778. *incanum*, Michx.  
 779. *lanceolatum*, Pursh.  
 780. *montanum*, Michx.
- CALAMINTHA**  
 781. *glabella*, Benth., *var. n.*  
     *Nuttallii*, Gray.  
 782. *Clinopodium*, Benth.
- HEDEOMA**  
 783. *pulegioides*, Pers.  
 784. *hispidia*, Pursh.
- COLLINSONIA**  
 785. *Canadensis*, L.

- MONARDA**  
 786. *didyma*, L.  
 787. *fistulosa*, L.  
 788. *punctata*, L.
- LOPHANTHUS**  
 789. *nepetoides*, Benth.  
 790. *scrophulariaefolius*, Benth.
- NEPETA**  
 791. *Cataria*, L.
- DRACOCEPHALUM**  
 792. *parviflorum*, Nutt.
- PIYOSTEGIA**  
 793. *Virginiana*, Benth.
- PRUNELLA**  
 794. *vulgaris*, L.
- SCUTELLARIA**  
 795. *integrifolia*, L.  
 796. *nervosa*, Pursh.  
 797. *parvula*, Michx.  
 798. *galericulata*, L.  
 799. *lateriflora*, L.
- MARRUBIUM**  
 800. *vulgare*, L.
- GALEOPSIS**  
 801. *Tetrahit*, L.  
 802. *Ladanum*, L.
- STACHYS**  
 803. *palustris*, L.  
     *b. aspera*, Gray.  
 804. *sylvatica*, L.
- LEONURUS**  
 805. *Cardiaca*, L.
- LAMIUM**  
 806. *amplexicaule*, L.

**BORRAGINACEÆ.**

- ECHIUM**  
 807. *vulgare*, L.
- LYCOPSIS**  
 808. *arvensis*, L.
- SYMPHYTUM**  
 809. *officinale*, L.
- ONOSMODIUM**  
 810. *Virginianum*, DC.  
 811. *Carolinianum*, DC.
- LITHOSPERMUM**  
 812. *arvense*, L.  
 813. *officinale*, L.  
 814. *latifolium*, Michx.  
 815. *hirtum*, Lechm.  
 816. *canescens*, Lechm.  
 817. *angustifolium*, Michx.
- MERTENSIA**  
 818. *Virginica*, DC.  
 819. *maritima*, Don.  
 820. *pilosa*, DC.  
 821. *paniculata*, Don.



## MYOSOTIS

822. *palustris*, With.  
     *b. laxa*.  
 823. *arvensis*, L.  
 824. *verna*, Nutt.

## ECHINOSPERMUM

825. *Lappula*, Lehm.

## CYNOGLOSSUM

826. *officinale*, L.  
 827. *Virginicum*, L.  
 828. *Morisoni*, DC.

## HYDROPHYLLACEÆ.

## HYDROPHYLLUM

829. *Virginicum*, L.  
 830. *Canadense*, L.  
 831. *appendiculatum*, Michx.

## PHACELIA

832. *Franklinii*, Gray.

## POLEMONIACEÆ.

## POLEMONIUM

833. *cæruleum*, L.

## PHLOX

834. *divaricata*, L.  
 835. *subulata*, L.

## DIAPENSIA

836. *Laponica*, L.

## CONVOLVULACEÆ.

## CONVOLVULUS

837. *arvensis*, L.

## CALYSTEGIA

838. *sepium*, R. Br.  
 839. *spithamea*, Pursh.

## CUSCUTA

840. *umbrosa*, Beyrich.  
 841. *Gronovii*, Willd.

## SOLANACEÆ.

## SOLANUM

842. *Dulcamara*, L.  
 843. *nigrum*, L.

## PHYSALIS

844. *viscosa*, L.  
 845. *physaloides*, Gærtn.

## HYOSCYAMUS.

846. *niger*, L.

## DATURA.

847. *Stramonium*, L.

## GENTIANACEÆ.

## SABBATIA

848. *angularis*, Pursh.

## FRASERA

849. *Carolinensis*, Walt.

## HALENIA

850. *deflexa*, Griseb.

## GENTIANA

851. *quinqueflora*, Lam.  
 852. *crinita*, Frœl.  
 853. *detonsa*, Fries.  
 854. *alba*, Muhl.  
 855. *Andrewsii*, Griseb.  
 856. *Saponaria*, L.  
     *b. linearis* Gray.  
 857. *acuta*, Michx.

## MENYANTHES

858. *trifoliata*, L.

## LIMNANTHEMUM

859. *lacunosum*, Griseb.

## APOCYNACEÆ.

## APOCYNUM

860. *androsæmifolium*, L.  
 861. *cannabinum*, L.  
     *b. glaberrimum*, DC.  
     *c. pubescens*, DC.  
     *d. hypericifolium*, Gray.

## ASCLEPIADACEÆ.

## ASCLEPIAS

862. *Cornuti*, Decaisne.  
 863. *phytolaccoides*, Pursh.  
 864. *purpurascens*, L.  
 865. *variegata*, L.  
 866. *quadrifolia*, Jacq.  
 867. *obtusifolia*, Michx.  
 868. *incarnata*, L.  
 869. *tuberosa*, L.

## ACERATES

870. *viridiflora*, Ell.

## OLEACEÆ.

## FRAXINUS

871. *Americana*, L.  
 872. *pubescens*, Lam.  
 873. *sambucifolia*, Lam.

## ARISTOLOCHIACEÆ.

## ASARUM

874. *Canadense*, L.

## PHYTOLACCACEÆ.

## PHYTOLACCA

875. *decandra*, L.

**CHENOPODIACEÆ.****CHENOPODIUM**

876. *hybridum*, L.  
877. *urbicum*, L.  
878. *album*, L.  
879. *ambrosioides*, L.  
880. *maculatum*, L.

**BLITUM**

881. *capitatum*, L.

**ATRIPLEX**

882. *hastata*, L.

**SALICORNIA**

883. *herbacea*, L.

**CHENOPODINA**

884. *maritidma*, Moquin.

**SALSOLA**

885. *Kali*, L.

**CORISPERMUM**

886. *hyssopifolium*, L.

**AMARANTACEÆ.****AMARANTHUS**

887. *paniculatus*, L.  
888. *hybridus*, L.  
889. *retroflexus*, L.  
890. *albus*, L.

**MONTELIA**

891. *tamariscina*, Gray.  
892. *cannabina*, L.

**POLYGONACEÆ.****POLYGONUM**

893. *viviparum*, L.  
894. *amphibium*, L.  
895. *nodosum*, Pers., var.  
    a. *incarnatum*, Gray.  
896. *Pennsylvanicum*, L.  
897. *Persicaria*, L.  
898. *Hydropiper*, L.  
899. *acre*, H.B.K.  
900. *hydropiperoides*, Michx.  
901. *aviculare*, M.  
    b. *erectum*, Roth.  
902. *ramosissimum*, Michx.  
903. *tenne*, Michx.  
904. *articulatum*, L.  
905. *Virginianum*, L.  
906. *arifolium*, L.  
907. *sagittatum*, L.  
908. *Convolvulus*, L.  
909. *cilinode*, Michx.  
910. *dumetorum*, L.

**FAGOPYRUM**

911. *esulentum*, Moench.

**OXYRIA**

912. *digyna*, Campd.

**RUMEX**

913. *verticillatus*, L.  
914. *altissimus*, Wood.  
915. *salicifolius*, Weinmann.  
916. *aquaticus*, Smith.  
917. *obtusifolius*, L.  
918. *crispus*, L.  
919. *conglomeratus*, Murray.  
920. *sanguineus*, L.  
921. *maritimus*, L.  
922. *acetosa*, L.  
923. *acetosella*, L.

**LAURACEÆ.****SASSAFRAS**

924. *officinale*, Nees.

**BENZOIN.**

925. *odoriferum*, Nees.

**THYMELEACEÆ.****DIRCA**

926. *palustris*, L.

**ELÆAGNACEÆ.****SHEPHERDIA**

927. *Canadensis*, Nutt.  
928. *angustifolia*, L.

**ELÆGANUS.**

929. *argentea*, Pursh.

**SANTALACEÆ.****COMANDRA**

930. *umbellata*, Nutt.  
931. *livida*, Richards.

**SAURURACEÆ.****SAURURUS**

932. *cernuus*, L.

**CERATOPHYLLACEÆ.****CERATOPHYLLUM**

933. *demersum*, L.

**CALLITRICHACEÆ.****CALLITRICHE**

934. *verna*, L.  
    b. *platycarpa*, Gray.  
935. *autumnalis*, L.  
    b. *linearis* Gray.

## EUPHORBIACEÆ.

## EUPHORBIA

936. *polygonifolia*, L.  
 937. Geyerl, Engelm.  
 938. *maculata*, L.  
 939. *glyptosperma*, Jacq.  
 940. *hypericifolia*, L.  
 941. *corollata*, L.  
 942. *Helioscopia*, L.  
 943. *obtusata*, Pursh.  
 944. *Darlingtonii*, Gray.  
 945. *Esula*, L.  
 946. *crestata*, Lindl.  
 947. *Lathyris*, L.

## ACALYPHA

948. *Virginica*, L.  
 949. *Caroliniana*, Walt.

## EMPETRACEÆ.

## EMPETRUM.

950. *nigrum*, L.

## COREMA

951. *Conradii*, Torr.

## URTICACEÆ.

## ULMUS

952. *fulva*, Michx.  
 953. *Americana*, L.  
 954. *racemosa*, Thomas.

## CELTIS

955. *occidentalis*, L.

## URTICA

956. *gracilis*, Ait.  
 957. *dioica*, L.  
 958. *urens*, L.  
 959. *purpurascens*, Nutt.

## LAPORTEA

960. *Canadensis*, Gaudich.

## PILEA

961. *pumila*, Gray.

## BOEMERIA

962. *cylindrica*, Willd.  
 963. *lateriflora*, Muhl.

## PARIETARIA

964. *Pennsylvanica*, Muhl.

## CANNABIS

965. *sativa*, L.

## HUMULUS

966. *Lupulus*, L.

## PLATANACEÆ.

## PLATANUS

967. *occidentalis*, L.

## JUGLANDACEÆ.

## JUGLANS

968. *cinerea*, L.  
 969. *nigra*, L.

## CARYA

970. *alba*, Nutt.  
 971. *sulcata*, Nutt.  
 972. *tomENTOSA*, Nutt.  
 973. *microcarpa*, Nutt.  
 974. *glabra*, Torr.  
 975. *amara*, Nutt.

## CORYLACEÆ.

## QUERCUS

976. *macrocarpa*, Michx.  
     *b. olivæformis*, Gray.  
 977. *obtusiloba*, Michx.  
 978. *alba*, L.  
 979. *Prinus*, L.  
     *b. monticola*, Michx.  
     *c. discolor*, Michx.

980. *Castanea*, Willd.

981. *prinoides*, Willd.

982. *nigra*, L.

983. *ilicifolia*, Wang.

984. *tinctoria*, Bartram.

985. *coccinea*, Wang.

986. *rubra*, L.

## CASTANEA

987. *vesca*, L.,  
     *b. Americana*, Gray.

988. *pumila*, Michx.

## FAGUS.

989. *ferruginea*, Ait.

## CORYLUS

990. *Americana*, Walt.

991. *rostrata*, Ait.

## CARPINUS

992. *Americana*, Michx.

## OSTRYA

993. *Virginica*, Willd.

## MYRICACEÆ.

## MYRICA

994. *Gale*, L.  
 995. *cerifera*, L.

## COMPTONIA

996. *asplenifolia*, Ait.

## BETULACEÆ.

## BETULA

997. *populifolia*, Ait.  
 998. *papyracea*, Ait.  
 999. *nigra*, L.

## BETULA.

1000. excelsa, Ait.  
1001. lenta, L.  
1002. pumila, L.  
1003. nana, L.

## ALNUS

1004. incana, Willd.  
1005. serrulata, L.  
1006. viridis, DC.

## SALICACEÆ.

## SALIX

1007. candida, Willd.  
1008. humilis, Marshall.  
1009. discolor, Muhl.  
1010. eriocephala, Michx.  
1011. sericea, Marshall.  
1012. petiolaris, Smith.  
1013. cordata, Muhl.  
1014. angustata, Pursh.  
1015. rostrata, Richardson.  
1016. alba, L.  
1017. nigra, Marshall.  
1018. lucida, Muhl.  
1019. longifolia, Muhl.  
1020. pedicellaris, Pursh  
1021. Uva-ursi, Pursh.  
1022. repens, L.  
1023. herbacea, L.  
1024. reticulata, L.  
    b. vestita, And.

## POPULUS

1025. tremuloides, Michx.  
1026. grandidentata, Michx.  
1027. heterophylla, L.  
1028. monilifera, Ait.  
1029. angulata, Ait.  
1030. balsamifera, L.  
1031. candicans, Ait.

## PINACEÆ.

## PINUS

1032. Banksiana, Lambert.  
1033. inops, Ait.  
1034. resinosa, Ait.  
1035. mitis, Michx.  
1036. rigida, Miller.  
1037. Tæda, L.  
1038. Strobus, L.

## ABIES

1039. balsamea, Marshall.  
1040. Fraseri, Pursh.  
1041. Canadensis, Michx.  
1042. nigra, Poir.  
1043. alba, Michx.

## LARIX

1044. Americana, Michx.

## THUJA

1045. occidentalis, L.

## CUPRESSUS

1046. thyoides, L.

## JUNIPERUS

1047. communis, L.  
1047.\* Virginiana, L.

## TAXUS

1048. baccata, L., var. a. Canadensis, Gray.

## ARACEÆ.

## ARISÆMA

1049. tri-phyllum, Torr.

## PELTANDRA.

1050. Virginica, Raf.

## CALLA

1051. palustris, L.

## SYMPLOCARPUS

1052. fœtidus, Salish.

## ACORUS

1053. Calamus, L.

## TYPHACEÆ.

## TYPHA

1054. latifolia, L.  
1055. angustifolia, L.

## SPARGANIUM

1056. eurycarpum, Engelm.  
1057. ramosum, Hudson.  
1058. simplex, Hudson.  
1059. natans L., var. a. affluc,  
    Fries.  
1060. angustifolium, Michx.

## LEMNACEÆ.

## LEMNA

1061. trisulca, L.  
1062. minor, L.  
1063. polyrrhiza, L.  
1064. gibba, L.

## NAIADACEÆ.

## NAIAS

1065. flexilis, Rostk.

## ZANNICHELLIA

1066. palustris, L.

## ZOSTERA

1067. marina, L.

## POTAMOGETON

1068. pectinatus, L.  
1069. Robbinsii, Oakes.  
1070. hybridus, Michx.  
1071. diversifolius, Bartou.

## POTAMOGETON

1072. pusillus, L.  
 1073. pauciflorus, Pursh.  
 1074. Niagarensis, Tuckerm.  
 1075. compressus, L.  
 1076. perfoliatus, L.  
 1077. prælongus, Wulf  
 1078. lucens, L.  
 1079. fuitans, Roth  
 1080. natans, L.  
 1081. heterophyllus, Schreber.

## ALISMACEÆ.

## TRIGLOCHIN

1082. palustre, L.  
 1083. maritimum, L.

## SCHEUCHZERIA

1084. palustris, L.

## ALISMA

1085. Plantago, L.  
 a. Americana, Gray.

## ECHINODORUS

1086. subulatus, Engelm.

## SAGITTARIA

1087. variabilis, Engelm.

## HYDROCHARIDACEÆ.

## LIMNOBIUM

1088. Spongia, Richard.

## ANACHARIS

1089. Canadensis, Planchon.

## VALLISNERIA

1090. spiralis, L.

## ORCHIDACEÆ.

## ORCHIS

1091. spectabilis, L.

## GYMNADENIA

1092. tridentata, Lindl.

## PLATANThERA

1093. obtusata, Lindl.  
 1094. rotundifolia, Lindl.  
 1095. orbiculata, Lindl.  
 1096. Hookeri, Lindl.  
 1097. bracteata, Torr.  
 1098. hyperborea, Lindl.  
 1099. dilatata, Lindl.  
 1100. flava, Gray.  
 1101. ciliaris, Lindl.  
 1102. blephariglottis, Lindl.  
 1103. leucophaea, Nutt.  
 1104. lacera, Gray.  
 1105. psychodes, Gray.  
 1106. fimbriata, Lindl.

## GOODYERA

1107. repens, R. Br.

## GOODYERA

1108. pubescens, R. Br.  
 1109. decipiens, R. Br.

## SPIRANTHES

1110. gracilis, Bigelow.  
 1111. latifolia, Torr.  
 1112. cernua, Richard.  
 1113. graminea, Torr.

## LISTERA

1114. cordata, R. Br.  
 1115. convallarioides, Hook.

## ARETHUSA

1116. bulbosa, L.

## POGONIA

1117. ophioglossoides, Nutt.  
 1118. pendula, Lindl.

## CALOPOGON

1119. pulchellus, R. Br.

## CALYPSO

1120. borealis, Salish.

## MICROSTYLIS

1121. monophyllos, Lindl.  
 1122. ophioglossoides, Nutt.

## LIPARIS

1123. liliifolia, Richard.  
 1124. Lœselii, Richard.

## CORALLORHIZA

1125. innata, R. Br.  
 1126. multiflora, Nutt.  
 1127. odontorhiza, Nutt.  
 1128. Macraei, Gray.

## APLECTRUM

1129. hyemale, Nutt.

## CYPRIPEDIUM

1130. pubescens, Willd.  
 1131. parviflorum, Salish.  
 1132. candidum, Muhl.  
 1133. spectabile, Swartz.  
 1134. acaule, Ait.  
 1135. arietinum, R. Br.

## AMARYLLIDACEÆ.

## HYPOXIS

1136. erecta, L.

## IRIDACEÆ.

## IRIS.

1137. versicolor, L.  
 1138. Virginica, L.  
 1139. lacustris, Nutt.  
 SISYRYNCHIUM  
 1140. Bermudiana, L.

## DIOSCOREACEÆ.

## DIOSCOREA

1141. villosa, L.

## SMILACEÆ.

## SMILAX

1142. rotundifolia, L.  
1143. glauca, Walt.  
1144. hispida, Muhl.  
1145. herbacea, L.

## TRILLIUM

1146. cernuum, L.  
1147. erectum, L.  
    b. album., Gray.  
1148. grandiflorum, Salisb.  
1149. nivale, Riddell.  
1150. erythrocarpum, Michx.

## MEDEOLA

1151. Virginica, L.

## LILIACEÆ.

## POLYGONATUM

1152. biflorum, Ell.  
1153. giganteum, Dietrich.

## SMILACINA

1154. racemosa, Desf.  
1155. stellata, Desf.  
1156. trifolia, Desf.  
1157. bifolia, Ker.

## CONVALLARIA

1158. *majalis*, L.

## CLINTONIA

1159. borealis, Raf.

## ALLIUM

1160. tricoccum, Ait.  
1161. Schœnoprasum, L.  
1162. Canadense, Kalm.

## LILIUM

1163. Philadelphicum, L.  
1164. Canadense, L.  
1165. superbum, L.

## ERYTHRONIUM

1166. Americanum, Smith.

## MELANTHACEÆ.

## UVULARIA

1167. grandiflora, Smith.  
1168. perfoliata, L.  
1169. sessilifolia, L.

## PROSARTES

1170. lanuginosa, Don.

## STREPTOPUS

1171. amplexifolius, DC.  
1172. roseus, Michx.

## ZYGADENUS

1173. glaucus, Nutt.

## VERATRUM

1174. viride, L.

## CHAMÆLIRIUM

1175. luteum, Gray.

## TOFIELDIA

1176. glutinosa, Willd.  
1177. pubens, Ait.  
1178. palustris, Hudson.

## JUNCACEÆ.

## LUCEOLA

1179. pilosa, Willd.  
1180. parviflora, Desv.  
    a. melanocarpa, E. Meyer.  
1181. campestris, DC.  
1182. arcuata, Meyer.  
1183. spicata, Desvaux.

## JUNCUS

1184. effusus, L.  
1185. filiformis, L.  
1186. Balticus, Willd.  
1187. setaceus, Rostk.  
1188. seirpoides, Lam.  
1189. paradoxus, E. Meyer.  
1190. acuminatus, Michx.  
1191. articulatus, L.  
1192. nodosus, L.  
1193. Conradi, Tuckerm.  
1194. marginatus, Rostk.  
1195. trifidus, L.  
1196. tenuis, Willd.  
1197. Greenii, Oakes & Tuckerm.  
1198. bulbosus, L.  
1199. bufonius, L.  
1200. fluitans, Michx.

## PONTEDERIACEÆ.

## PONTEDERIA

1201. cordata, L.

## SCHOLLERA

1202. graminea, Willd.

## XYRIDACEÆ.

## XYRIS

1203. bulbosa, Kunth.

## ERIOCAULONACEÆ.

## ERIOCAULON

1204. septangulare, Withering.

## CYPERACEÆ.

## CYPERUS

1205. flavescens, L.  
1206. diandrus, Torr.  
1207. Nuttallii, Torr.  
1208. Engelmanni, Steud.  
1209. strigosus, L.

## CYPERUS.

1210. inflexus, Muhl.  
 1211. phymatodes, Muhl.  
 1212. Schweinitzii, Torr.  
 1213. filiculmis, Vahl.

## DULICHIMUM

1214. spathaceum, Pers.

## ELEOCHARIS

1215. obtusa, Schultes.  
 1216. olivacea, Torr.  
 1217. palustris, R. Br.  
 1218. rostellata, Torr.  
 1219. intermedia, Schultes.  
 1220. tenuis, Schultes.  
 1221. compressa, Sullivant.  
 1222. acicularis, R. Br.

## SCIRPUS

1223. cespitosus, L.  
 1224. pungens, Vahl.  
 1225. Torreyi, Olney.  
 1226. lacustris, L.  
 1227. maritimus, L.  
 1228. sylvaticus, L.  
 1229. paucifolius, Smith.  
 1230. Eriophorum, Michx.

## ERIOPHORUM

1231. alpinum, L.  
 1232. vaginatum, L.  
 1233. Virginicum, L.  
 1234. polystachyon, L.  
 1235. gracile, Koch.  
 1236. russeolum, Torr and Gray.

## RHYNCHOSPORA

1237. fusca, Röm. & Schult.  
 1238. alba, Vahl.  
 1239. capillacea, Torr.  
 1240. glomerata, Vahl.

## CLADIUM

1241. mariscoides, Torr.

## SCLERIA

1242. verticillata, Muhl.

## CAREX

1243. gynocrates, Wormsk.  
 1244. exilis, Dewey.  
 1245. scirpoidea, Michx.  
 1246. capitata, L.  
 1247. pauciflora, Lightf.  
 1248. polytrichodes, Muhl.  
 1249. Willdenovii, Schk.  
 1250. Backii, Boott.  
 1251. bromoides, Schk.  
 1252. siccata, Dewey.  
 1253. Sartwellii, Dewey.  
 1254. teretiuscula, Good.  
     b. major, Gray.  
 1255. decomposita, Muhl.  
 1256. vulpinoidea, Michx.  
 1257. Orus-corvi, Shuttleworth.

## CAREX

1258. stipata, Muhl.  
 1259. vulpina, L.  
 1260. sparganioides, Muhl.  
 1261. cephalophora, Muhl.  
 1262. Muhlenbergii, Schk.  
 1263. rosea, Schk.  
     b. radiata, Dewey.  
 1264. retroflexa, Muhl.  
 1265. chordorhiza, Ehrh.  
 1266. tenella, Schk.  
 1267. trisperma, Dewey.  
 1268. tenuiflora, Wahl.  
 1269. canescens, L.  
 1270. vitilis, Fries.  
 1271. Deweyana, Schw.  
 1272. stellulata, Good.  
 1273. sychocephala, Carey.  
 1274. rigida, Boott.  
 1275. scoparia, Schk.  
 1276. lagopodioides, Schk.  
 1277. adusta, Boott.  
 1278. festucacea, Schk.  
 1279. straminea, Wahl.  
 1280. Liddoni, Boott.  
 1281. torta, Boott.  
 1282. vulgaris, Fries.  
 1283. aperta, Boott.  
 1284. stricta, Lam.  
 1285. aquatilis, Wahl.  
 1286. lenticularis, Michx.  
 1287. salina, Wahl.  
 1288. maritima, Vahl.  
 1289. crinita, Lam.  
 1290. limosa, L.  
 1291. irrigua, Smith.  
 1292. Buxbaumii, Wahl.  
 1293. VahlII, Schk.  
     a. clata, Gray.  
 1294. atrata, L.  
 1295. aurea, Nutt.  
 1296. livida, Willd.  
 1297. tetanica, Schk.  
 1298. Crawei, Dewey.  
 1299. granularis, Muhl.  
 1300. pallescens, L.  
 1301. conoidea, Schk.  
 1302. grisea, Wahl.  
 1303. formosa, Dewey.  
 1304. gracillima, Schw.  
 1305. virescens, Muhl.  
 1306. triceps, Michx.  
 1307. plantaginea, Lam.  
 1308. platyphylla, Carey.  
 1309. digitalis, Willd.  
 1310. laxiflora, Lam.  
 1311. oligocarpa, Schk.  
 1312. Hitchcockiana, Dewey.

## CAREX

1313. eburnea, Boott.  
 1314. pedunculata, Muhl.  
 1315. vaginata, Tansch.  
 1316. umbellata, Schk.  
 1317. Nova-Angliae, Schw.  
 1318. Pennsylvanica, Lam.  
 1319. varia, Muhl.  
 1320. Richardsonii, R. Br.  
 1321. pubescens, Muhl.  
 1322. milliacea, Muhl.  
 1323. scabrata, Schw.  
 1324. arcata, Boott.  
 1325. debilis, Michx.  
 1326. capillaris, L.  
 1327. flexilis, Rudge.  
 1328. flava, L.  
 1329. Ederi, Ehrh.  
 1330. filiformis, L.  
 1331. lanuginosa, Michx.  
 1332. vestita, Willd.  
 1333. Houghtonii, Torr.  
 1334. striata, Michx.  
 1335. lacustris, Willd.  
 1336. aristata, R. Br.  
 1337. trichocarpa, Muhl.  
 1338. comosa, Boott.  
 1339. Pseudo-Cyperus, L.  
 1340. mirata, Dewey.  
 1341. hystericina, Willd.  
 1342. tentaculata, Muhl.  
 1343. intumescens, Rudge.  
 1344. Canadensis, Dew.  
 1345. folliculata, L.  
 1346. rostrata, Michx.  
 1347. subulata, Michx.  
 1348. lupulina, Muhl.  
 1349. squarrosa, L.  
 1350. Macounii, Dew.  
 1351. retrorsa, Schw.  
 1352. Bellavilla, Dew.  
 1353. Schweinitzii, Dewey.  
 1354. vesicaria, L.  
 1355. Vaseyi, Dewey.  
 1356. monile, Tuckerm.  
 1357. ampullacea, Good.  
 1358. Hartii, Dewey.  
 1359. cylindrica, Schw.  
 1360. bullata, Schk.  
 1361. oligosperma, Michx.  
 1362. longirostris, Torr.  
 1363. bicolor, All.

## GRAMINACEÆ.

## LEERSIA

1364. oryzoides, Swartz.  
 1365. Virginica, Willd.

## ZIZANIA

1366. aquatica, L.  
 1367. fluitans, Michx.

## ALOPECURUS

1368. geniculatus, L.  
 1369. aristulatus, Michx.

## PHLEUM

1370. pratense, L.  
 1371. alpinum, L.

## VILFA

1372. vaginæflora, Torr.

## SPOROBOLUS

1373. heterolepsis, Gray.  
 1374. cryptandrus, Gray.

## AGROSTIS

1375. perennans, Tuckerm.  
 1376. scabra, Willd.  
 1377. vulgaris, With.  
 1378. alba, L.

## CINNA

1379. arundinacea, L.  
 b. pendula, Gray.

## MUHLENBERGIA.

1380. glomerata, Trin.  
 1381. Mexicana, Trin.  
 1382. sylvatica, Torr. & Gr.  
 1383. Willdenovii, Trin.  
 1384. capillaris, Kunth.

## BRACHYELYTRUM

1385. aristatum, Beauv.

## CALAMAGROSTIS

1386. Canadensis, Beauv.  
 1387. coarctata, Torr.  
 1388. longifolia, Hook.  
 1389. arenaria, Roth.

## ORYZOPSIS

1390. melanocarpa, Muhl.  
 1391. asperifolia, Michx.  
 1392. Canadensis, Torr.

## STIPA

1393. Richardsonii, Link.  
 1394. avenacea, L.

## SPARTINA

1395. cynosuroides, Willd.  
 1396. polystachya, Willd.  
 1397. juncea, Willd.

## BOUPELOUA

1398. curtispindula, Gray.

## CYNODON

1399. Dactylon, Pers.

## GRAPHEPHORUM

1400. melicoides, Beauv.  
 b. major, Gray.

## DACTYLIS

1401. glomerata, L.

## KÖELERIA

1402. cristata, Pers.



- EATONIA**  
 1403. *obtusata*, Gray.  
 1404. *Pennsylvanica*, Gray.
- GLYCERIA**  
 1405. *Canadensis*, Trin.  
 1406. *obtusata*, Trin.  
 1407. *elongata*, Trin.  
 1408. *nervata*, Trin.  
 1409. *pallida*, Trin.  
 1410. *aquatica*, Smith.  
 1411. *fluitans*, R. Br.  
 1412. *acutiflora*, Torr.  
 1413. *maritima*, Wahl.
- BRIZOPYRUM**  
 1414. *spicatum*, Hook.
- POA**  
 1415. *annua*, L.  
 1416. *laxa*, Hænke.  
 1417. *alpina*, L.  
 1418. *brevifolia*, Muhl.  
 1419. *flexuosa*, Muhl.  
 1420. *alsodes*, Gray.  
 1421. *debilis*, Torr.  
 1422. *serotina*, Ehrh.  
 1423. *memoralis*, L.  
 1424. *trivialis*, L.  
 1425. *pratensis*, L.  
 1426. *compressa*, L.
- ERAGROSTIS**  
 1427. *reptans*, Nees.
- BRIZA**  
 1428. *media*, L.
- FESTUCA**  
 1429. *tenella*, Willd.  
 1430. *ovina*, L.  
       *b. duriuscula*, Gray.  
 1431. *elatior*, L.  
 1432. *nutans*, Willd.
- BROMUS**  
 1433. *secalinus*, L.  
 1434. *Kalmii*, Gray.  
 1435. *ciliatus*, L.
- PHRAGMITES**  
 1436. *communis*, Trin.
- LOLIUM**  
 1437. *perenne*, L.
- TRITICUM**  
 1438. *repens*, L.  
 1439. *caninum*, L.  
 1440. *dasytachyum*, Gray.  
 1441. ————nov. sp.
- HORDEUM**  
 1442. *jubatum*, L.
- ELYMUS**  
 1443. *Virginicus*, L.  
 1444. *Canadensis*, L.  
 1445. *europaeus*, L.  
 1446. *mollis*, Trin.
- GYMNOSTICHUM**  
 1447. *Hystrix*, Schreb.
- AIRA**  
 1448. *flexuosa*, L.  
 1449. *cæspitosa*, L.  
 1450. *atropurpurea*, Wahl.
- DANTHONIA**  
 1451. *spicata*, Beauv.
- TRISETUM**  
 1452. *subspicatum*, Beauv.  
       *a. molle*, Gray.
- AVENA**  
 1453. *striata*, Michx.
- HOLCUS**  
 1454. *lanatus*, L.
- HIEROCHLOA**  
 1455. *borealis*, Rœm. & Schultes.  
 1456. *alpina*, Rœm. & Schultes.
- ANTHOXANTHUM**  
 1457. *odoratum*, L.
- PHALARIS**  
 1458. *arundinacea*, L.
- MILIUM**  
 1459. *effusum*, L.
- PANICUM**  
 1460. *filiforme*, L.  
 1461. *glabrum*, Gaudin.  
 1462. *sanguinale*, L.  
 1463. *agrostoides*, Spreng.  
 1464. *capillare*, L.  
 1465. *antumnale*, Bosc.  
 1466. *virgatum*, L.  
 1467. *latifolium*, L.  
 1468. *clandestinum*, L.  
 1469. *microcarpon*, Muhl.  
 1470. *xanthophysum*, Gray.  
 1471. *dichotomum*, L.  
 1472. *depauperatum*, Muhl.  
 1473. *Crus-galli*, L.
- SETARIA**  
 1474. *verticillata*, Beauv.  
 1475. *glauca*, Beauv.  
 1476. *viridis*, Beauv.
- CENCHRUS**  
 1477. *tribuloides*, L.
- ANDROPOGON**  
 1478. *furcatus*, Muhl.  
 1479. *scoparius*, Michx.  
 1480. *argenteus*, Ell.
- SORGHUM**  
 1481. *nutans*, Gray.
- EQUISETACEÆ.**
- EQUISETUM**  
 1482. *arvense*, L.  
 1483. *eburneum*, Schreber.  
 1484. *pratense*, Ehrh.

## EQUISETUM

1485. sylvaticum, L.  
 1486. limosum, L.  
 1487. palustre, L.  
 1488. robustum, Braun.  
 1489. hyemale, L.  
 1490. variegatum, Schleicher.  
 1491. scirpoides, Michx.

## POLYPODIACEÆ.

## POLYPODIUM.

1492. vulgare, L.  
 1493. Phegopteris, L.  
 1494. hexagonopterum, Michx.  
 1495. Dryopteris, L.

## STRUTHIOPTERIS

1496. Germanica, Willd.

## ALLOSORUS.

1497. acrostichoides, Gray.  
 1498. gracilis, Presl.  
 1499. atropurpureus, Kunze.

## PTERIS.

1500. aquilina, L.

## ADIANTUM

1501. pedatum, L.

## WOODWARDIA

1502. Virginica, Willd.

## CAMPTOSORUS

1503. rhizophyllus, Link.

## SCOLOPENDRIUM

1504. vulgare, L.

## ASPLENIUM

1505. Trichomanes, L.  
 1506. ebeneum, Ait.  
 1507. viride, Hudson.  
 1508. angustifolium, Michx.  
 1509. thelypteroides, Michx.  
 1510. Filix-fœmina, P. Br.

## DICKSONIA

1511. punctilobula, Kunze.

## WOODSIA.

1512. Ilvensis, R. Br.  
 1513. glabella, R. Br.

## CYSTOPTERIS.

1514. hyperhorca, R. Br.  
 1515. bulbifera, Bernh.  
 1516. fragilis, Bernh.

## ASPIDIUM.

1517. Thelypteris, Swartz.  
 1518. Noveboracense, Wild.

## ASPIDIUM

1519. spinulosum, Swartz.  
 b. dilatatum, Gray.  
 c. Boottij, Gray.  
 1520. cristatum, Swartz.  
 1521. Goldianum, Hook.  
 1522. marginale, Swartz.  
 1523. fragrans, Swartz.  
 1524. aculeatum, Swartz.  
 a. Braunii, Koch.  
 1525. acrostichoides, Swartz.  
 1526. Lonchitis, Spreng.

## ONOCLEA

1527. sensibilis, L.

## OSMUNDA

1528. regalis, L.  
 b. spectabilis, Gray.  
 1529. Claytoniana, L.  
 1530. cinnamomea, L.

## OPHIOGLOSSACEÆ.

## BOTRYCHIUM

1531. lunarioides, Swartz.  
 1532. obliquum, Muhl.  
 1533. dissectum, Muhl.  
 1534. Virginicum, Swartz.  
 b. simplex, Gray.  
 1535. lunaria, Swartz.

## OPHIOGLOSSUM

1536. vulgatum, L.

## LYCOPODIACEÆ.

## LYCOPODIUM

1537. lucidulum, Michx.  
 1538. Selago, L.  
 1539. inundatum, L.  
 1540. annotinum, L.  
 1541. dendroideum, Michx.  
 1542. clavatum, L.  
 1543. complanatum, L.  
 SELAGINELLA  
 1544. selaginoides, Gray.  
 1545. rupestris, Spring.  
 1546. apus, Spring.

## MARSILEACEÆ.

## ISOETES

1547. lacustris, L.

## SPECIES OF DOUBTFUL OCCURRENCE.

- Thalictrum clavatum*, D.C.  
*Trautvetteria palmata*, Fisch & Meyer.  
*Magnolia acuminata*, L.  
*Asmina triloba*, Dunal.  
*Nuphar lutea*, R. Br.  
*Cardamine bellidifolia*, L.  
*Subularia aquatica*, L.  
*Alsine juniperina*, L.  
*Oxalis violacea*, L.  
*Rhamnus lanceolatus*, Pursh.  
*Polygala cruciata*, L.  
*Desmodium lineatum*, D.C.  
*Cladrastis tinctoria*, Raf.  
*Cercis Canadensis*, L.  
*Poterium Sanguisorba*, L.  
*Geum Peckii*, Pursh.  
*Potentilla paradoxa*, Nutt.  
*P. frigida*, Vill.  
*Oenothera fruticosa*, L.  
*Heuchera villosa*, Michx.  
*Hydrocotyle interrupta*, Muhl.  
*Mikania scandens*, L.  
*Aster spectabilis*, Ait.  
*A. blandius*, Pursh.  
*Erigeron alpinus*, Hook.  
*E. hyssopifolium*, Michx.  
*Solidago virgata*, Michx.  
*S. Ohioensis*, Riddell.  
*S. elliptica*, Ait.  
*S. pilosa*, Walt.  
*S. lateriflora*, L.  
*Chrysopsis falcata*, Ell.  
*Gnaphalium sylvaticum*, L.  
*Circium pumilum*, Spreng.  
*Vaccinium stamineum*, L.  
*Clethra alnifolia*, L.  
*Azalia nudiflora*, L.  
*Rhododendron maximum*, L.  
*Ilex opaca*, Ait.  
*I. glabra*, Gray.  
*Pentstemon gracilis*, Nutt.  
*Gratiola pilosa*, Michx.  
*Pedicularis resupinata*, Willd.  
*Trichostema dichotomum*, L.  
*Salvia lyrata*, L.  
*Phlox maculata*, L.  
*Ipomæa pandurata*, L.  
*Cuscuta compacta*, Juss.  
*Sabbatia stellaris*, Pursh.  
*S. gracilis*, Salisb.  
*Pleurogyne rotata*, Griesb.  
*Asclepias incarnata*, L.  
*Gonolobus hirsutus*, Michx.  
*Fagus sylvatica*, L.  
*Orontium aquaticum*, L.  
*Ruppia maritima*, L.  
*Potamogeton crispum*, L.  
*Alisma natans*, Willd.  
*Pogonia verticillata*, Nutt.  
*Allium stellatum*, Nutt.  
*Lilium Catesbæi*, Walt.  
*Erythronium albidum*, Nutt.  
*Zygadenus glaberrimus*, Michx.  
*Stenanthium angustifolium*, Gray.  
*Eriocaulon decangulare*, L.  
*Eleocharis equisetoides*, Torr.  
*Carex panicea*, L.  
*Eragrostis capillaris*, Nees.  
*Trisetum palustre*, Torr.  
*Panicum pauciflorum*, Ell.  
*Polypodium Robertianum*, Hoffm.  
*Asplenium marinum*, L.  
*A. Ruta-muraria*, J.  
*A. septentrionale*, Hoffm.  
*Aspidium Filix-mas*, Swartz.  
*Lygodium palmatum*, Swartz.  
*Botrychium lanceolatum*, Watt.  
*Azolla Caroliniana*, Willd.  
*Marsilea mucronata*, L.  
*Salvinia natans*, L.

## OCCASIONALLY ESCAPED FROM CULTIVATION ABOUT DWELLINGS, &amp;C.

- Berberis vulgaris*, L.  
*Hesperis matricularis*, L.  
*Sinapis alba*, L.  
*Draba muralis*, L.  
*Lepidium ruderales*, L.  
*Raphanus raphanistrum*, L.  
*Silene Armeria*, L.  
*Lychnis flos-cuculi*, L.  
 L. *vespertina*, Sibth.  
*Scleranthus annuus*, L.  
*Portulacca grandiflora*, L.  
*Malva Moschata*, L.  
*Abutilon Avicennæ*, Gaertn.  
*Hibiscus Trionum*, L.  
*Linum usitatissimum*, L.  
*Crataegus oxycantha*, L.  
*Sedum Telephium*, L.  
*S. acre*, L.  
*Scabiosa atropurpurea*, L.  
*Anthemis arvensis*, L.  
*Achillea Ptarmica*, L.  
*Artimesia Absinthium*, L.  
*Centaurea nigra*, L.  
*Cnicus benedictus*, L.  
*Lampsana communis*, L.  
*Tragopogon pratense*, L.  
*Sonchus palustris*, L.  
*Veronica Chamædrys*, L.  
 V. *trphylos*, L.  
*Pedicularis palustris*, L.  
*Œatureia hortensis*, L.  
*Melissa officinalis*, L.  
*Lamium purpureum*, L.  
*Ipomea purpurea*, Lam.  
*Erythraea Centaurium*, Pers.  
*Ligustrum vulgare*, L.  
*Blitum Bonus-Henricus*, Reichenb.  
*Chenopodium Botrys*, L.  
*Euphorbia Cyparissias*, L.  
 E. *Peplus*, L.  
*Tradescantia Virginica*, L.  
*Eragrostis pectoides*, Beauv.  
*Phalaris Canariensis*, L.



PREPARING FOR THE PRESS,

*Dedicated, by permission, to the REV. PROF. HINCKS, F.L.S., F.Z.S.  
&c., &c.*

---

# HANDBOOK

OF

# THE CANADIAN FLORA,

A DESCRIPTION

OF THE

# FLOWERING PLANTS AND FERNS

OF CANADA,

BY

THE REV. J. HUBBERT, M. A., PH. D.

FELLOW OF THE BOTANICAL SOCIETY OF CANADA,  
MEM. ENT. SOC. CAN., MEM. CAN. INST.,  
COR. MEM. ESSEX INSTITUTE,  
PROF. OF NATURAL HIST. IN  
ST. FRANCIS COLLEGE,  
RICHMOND, C. E.,  
ETC., ETC., ETC.

**WITH PLATES**

ILLUSTRATING THE GENERA OF THE GRASSES AND FERNS.

# FLORA OF CANADA,

*In one Octavo vol., containing about 600 pages.*

The object of this work is to furnish to Amateurs and Students of CANADIAN BOTANY, a Manual of the Science, so far combining the characters of fulness and scientific precision, with freedom from unnecessary technicality, that a person with no previous knowledge of the subject, and provided only with the "HANDBOOK" and a good pocket-lens, may easily become acquainted with the names, properties, and habitats of our native and naturalized Plants.

## CONTENTS.

- I. Introductory sketch of structural and systematic Botany.
- II. List of Authorities referred to in this work, with the residence, profession, &c., of each.
- III. Artificial Analytical Key.
- IV. Scientific arrangement of the Classes, Alliances, and Natural Orders of Plants.
- V. Description of the Classes, Orders, Genera, Species, and important Varieties of Canadian Plants, with their general Geographical range, distribution in Canada, uses, period of Flowering, Synonymy when several well-known names are in use for the same plant, Analytical Tables for facilitating reference to sub-groups, &c. &c.
- VI. Index of Technical Terms.
- VII. Index of Latin and English names.

ents  
ing  
rom  
dge  
d a  
nes,

ny.  
esi-

ral

m-  
ral  
of  
are  
tt-

