

**CIHM
Microfiche
Series
(Monographs)**

**ICMH
Collection de
microfiches
(monographies)**



Canadian Institute for Historical Microreproductions / Institut canadien de microreproductions historiques

© 1996

The Institute has attempted to obtain the best original copy available for filming. Features of this copy which may be bibliographically unique, which may alter any of the images in the reproduction, or which may significantly change the usual method of filming, are checked below.

L'Institut a microfilmé le meilleur exemplaire qu'il lui a été possible de se procurer. Les détails de cet exemplaire qui sont peut-être uniques du point de vue bibliographique, qui peuvent modifier une image reproduite, ou qui peuvent exiger une modification dans la méthode normale de filmage sont indiqués ci-dessous.

- ☒
- Coloured covers/
-
- Couverture de couleur

- ☒
- Covers damaged/
-
- Couverture endommagée

- ☐
- Covers restored and/or laminated/
-
- Couverture restaurée et/ou pelliculée

- | | |
|--------------------------|---|
| <input type="checkbox"/> | Cover title missing/
Le titre de couverture manque |
|--------------------------|---|

- ☐
- Coloured maps/
-
- Cartes géographiques en couleur

- ☐ Coloured ink (i.e. other than blue or black)/
Encre de couleur (i.e. autre que bleue ou noire)

- ☐ Coloured plates and/or illustrations/
Planches et/ou illustrations en couleur

- ☐
- Bound with other material/
-
- Relié avec d'autres documents

- ☒ Tight binding may cause shadows or distortion along interior margin/
La reliure serrée peut causer de l'ombre ou de la distorsion le long de la marge intérieure

- ☐ Blank leaves added during restoration may appear within the text. Whenever possible, these have been omitted from filming/
Il se peut que certaines pages blanches ajoutées lors d'une restauration apparaissent dans le texte, mais, lorsque cela était possible, ces pages n'ont pas été filmées.

- ☐
- Coloured pages/
-
- Pages de couleur

- ☐
- Pages damaged/
Pages endommagées**

- ☐
- Pages restored and/or
-
- ☐
- Pages restaurées et/ou

- ☒ Pages discoloured, stained or covered/
Pages décolorées, tachetées ou piquées

- ☐
- Pages detached/
Pages détachées**

- ☒
- Showthrough/
-
- Transparency

- ☐ **Quality of print varies/
Qualité inégale de l'impression**

- ☐ Continuous pagination/
 Pagination continue

- ☐
- Includes index(es)/
-
- Comprend un (des) index

Title on header taken from: /
Le titre de l'en-tête provient:

- ☐
- Title page of issue/
-
- Page de titre de la livraison

- ☐ **Caption of issue/
Titre de départ de la livraison**

- ☐
- Masthead/**
-
- Générique (périodiques) de la livraison**

- ☒ Additional comments: /
Commentaires supplémentaires:

There are some creases in the middle of the pages.

This item is filmed at the reduction ratio checked below/

Ce document est filmé au taux de réduction indiqué ci-dessous.

10x	14x	18x	22x	26x	30x
	✓				
12x	16x	20x	24x	28x	32x

The copy filmed here has been reproduced thanks to the generosity of:

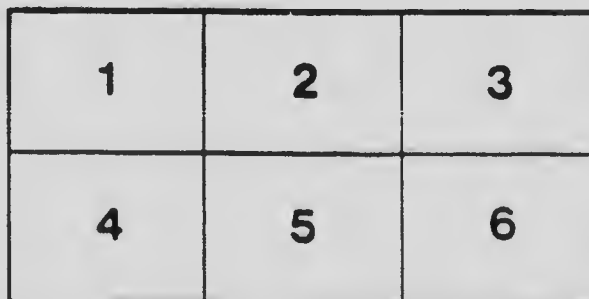
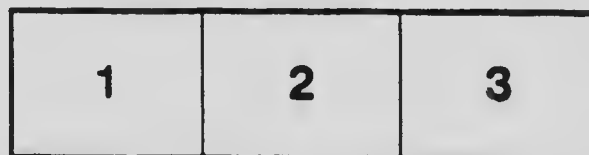
Canadiana department
North York Central Library

The images appearing here are the best quality possible considering the condition and legibility of the original copy and in keeping with the filming contract specifications.

Original copies in printed paper covers are filmed beginning with the front cover and ending on the last page with a printed or illustrated impression, or the back cover when appropriate. All other original copies are filmed beginning on the first page with a printed or illustrated impression, and ending on the last page with a printed or illustrated impression.

The last recorded frame on each microfiche shall contain the symbol \rightarrow (meaning "CONTINUED"), or the symbol ∇ (meaning "END"), whichever applies.

Maps, plates, charts, etc., may be filmed at different reduction ratios. Those too large to be entirely included in one exposure are filmed beginning in the upper left hand corner, left to right and top to bottom, as many frames as required. The following diagrams illustrate the method:



L'exemplaire filmé fut reproduit grâce à la générosité de:

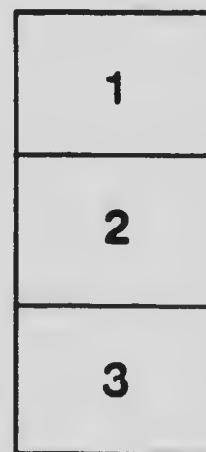
Canadiana department
North York Central Library

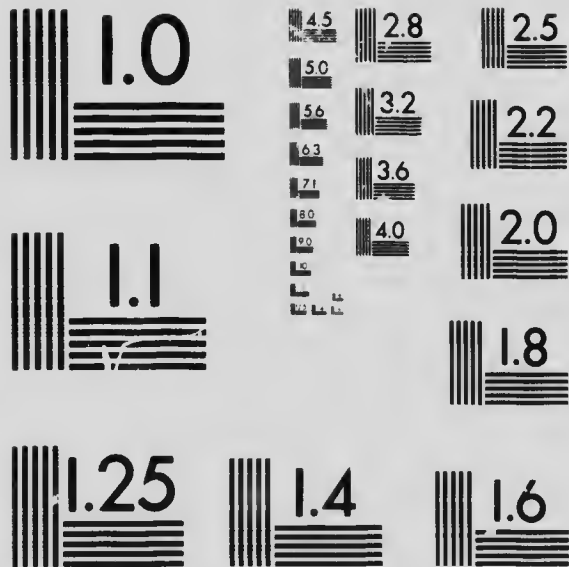
Les images suivantes ont été reproduites avec le plus grand soin, compte tenu de la condition et de la netteté de l'exemplaire filmé, et en conformité avec les conditions du contrat de filmage.

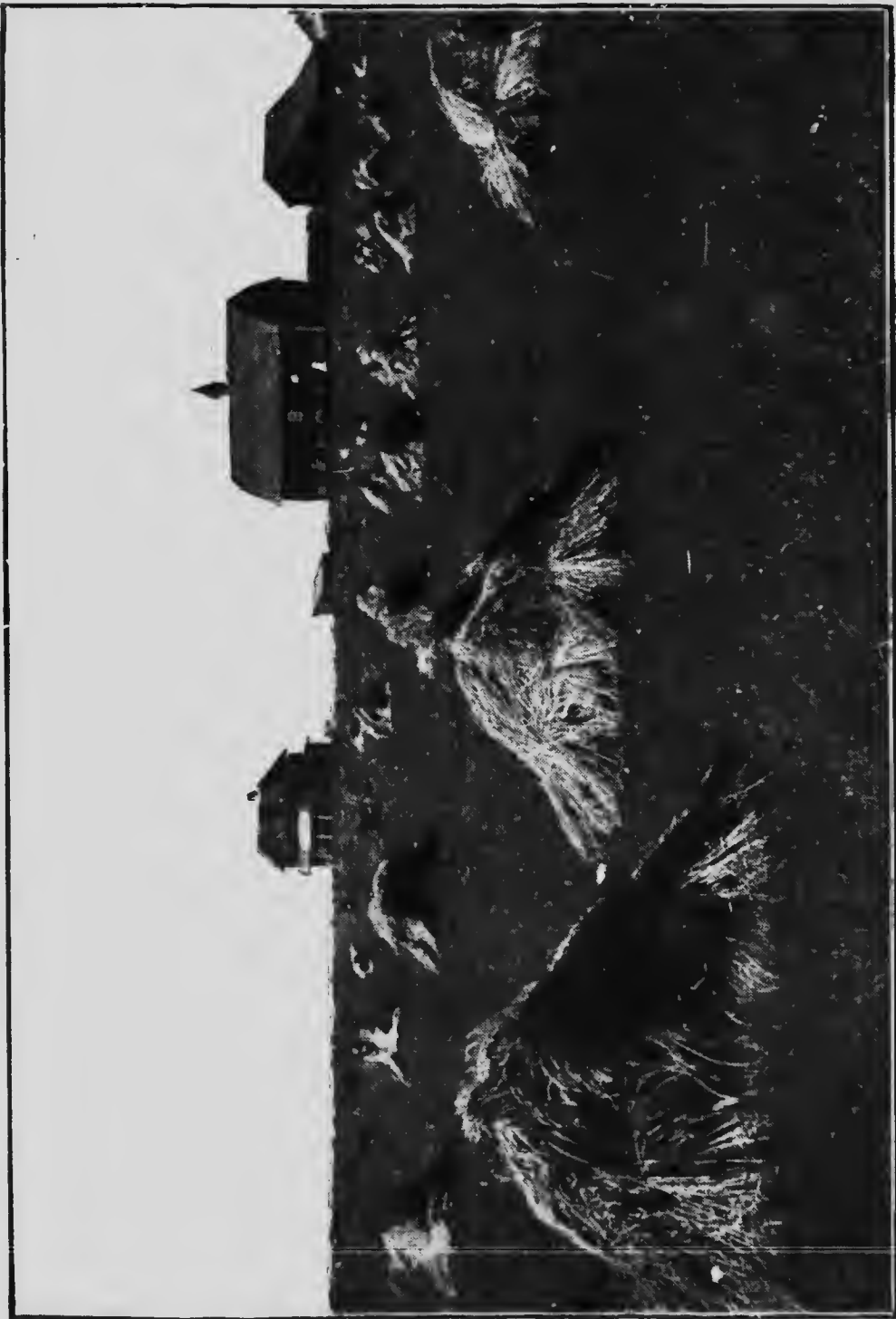
Les exemplaires originaux dont la couverture en papier est imprimée sont filmés en commençant par le premier plat et en terminant soit par la dernière page qui comporte une empreinte d'impression ou d'illustration, soit par le second plat, selon le cas. Tous les autres exemplaires originaux sont filmés en commençant par la première page qui comporte une empreinte d'impression ou d'illustration et en terminant par la dernière page qui comporte une telle empreinte.

Un des symboles suivants apparaîtra sur la dernière image de chaque microfiche, selon le cas: le symbole \rightarrow signifie "A SUIVRE", le symbole ∇ signifie "FIN".

Les cartes, planches, tableaux, etc., peuvent être filmés à des taux de réduction différents. Lorsque le document est trop grand pour être reproduit en un seul cliché, il est filmé à partir de l'angle supérieur gauche, de gauche à droite, et de haut en bas, en prenant le nombre d'images nécessaire. Les diagrammes suivants illustrent la méthode.







A Prosperous Saskatchewan Farm

Opportunities in Saskatchewan

1915

Containing Extracts from
Heaton's Annual



Provincial Booklet Series

(see over)

Copyright by Ernest Heaton
Toronto, 1915

HEATON'S PROVINCIAL BOOKLETS

(REVISED ANNUALLY)

Are published for the Canadian Provincial Governments, are absolutely reliable, contain no unnecessary words, have been designed to fit easily into a pocket or an envelope, can be mailed with ordinary correspondence and give precisely the information wanted by intending settlers, travellers, investors, manufacturers and others who wish to extend their business. *Together they form the only uniform series of publications covering each Province in Canada.* For free copies apply to the Agents of the Provinces in London or to the Minister of Agriculture of each Province as follows:

Heaton's Alberta Booklet.....	at Edmonton, Alta.
" British Columbia Booklet ..	" Victoria, B.C.
" Manitoba Booklet.....	" Winnipeg, Man.
" New Brunswick Booklet..	" Fredericton, N.B.
" Nova Scotia Booklet.....	" Halifax, N.S.
" Ontario Booklet	" Toronto, Ont.
" New Ontario Booklet....	" Toronto, Ont.
" Prince Ed. Island Booklet	" Charlottetown, P.E.I.
" Quebec Booklet.....	" Quebec, Que.
" Saskatchewan Booklet...	" Regina, Sask.

HEATON'S ANNUAL

Contains general and local information about every Province, revised to date; official and other directories, postal and commercial information, the Canadian Customs Tariff and a valuable economic bibliography of Canadian Government reports and standard publications relating to Canada. Price 5/-. For 1915 edition (eleventh issue) write to The Times Book Club, Oxford St., London, England, or to

Heaton's Agency, Toronto, Canada

OPPORTUNITIES

— IN —

SASKATCHEWAN

General Information

AREA. According to a statement compiled by the Department of the Interior, the land area in Saskatchewan is 143,927,680 acres, the area not covered by water in surveyed sections in June 1912, was 67,731,760 acres. The unsurveyed area available for some form of agriculture, though of much less average value than the land surveyed, is estimated at 18 million acres.

CLIMATE. In summer the temperature often rises to 100 degrees. Winters are cold, lasting from end of November to middle or end of March. The atmosphere is clear and dry owing to the altitude, 3,000 ft. to 15,000. Snowfall is light. Bright sunshine is the rule. There are no blizzards, floods, earthquakes or cyclones. West and south of Swift Current chinook winds occasionally occur. Here cattle winter well on the range. The following table compiled for "Heaton's Annual" by the Meteorological Department at Toronto shows the mean average temperature and average annual rainfall in inches, at different points in Saskatchewan:

	Temperature	Rainfall
Indian Head.....	38.9	18
Moose Jaw.....	34.6	14
Moosomin.....	33.5	16
Pense.....	35.2	18
Prince Albert.....	32.1	17
Qu'Appelle.....	33.9	19
Regina.....	32.5	14
Saskatoon.....	32.5	14
Swift Current.....	38.3	16

DOMINION HOMESTEADS. Homesteads may still be obtained in many parts of the province. In the south-eastern and central districts, where settlement is comparatively thick, homesteads are rather few and far be-



A Homesteader Starting out with his Supplies.

tween. The Southwestern and western parts of the province have lately been receiving the great majority of the settlers.

HOW TO MAKE SELECTION. Homesteads in the Prairie Provinces are being rapidly taken up. It is, therefore, practically impossible to make a selection by correspondence. First visit in person the office of J. Bruce Walker, commissioner of Immigration, near the C.P.R. Station at Winnipeg. Here maps can be consulted and definite information obtained of Dominion Lands unallotted to date, the character of the soil, and a description of any district. Choose a locality and make alternative selections of homesteads, then apply to the Dominion Lands Agent in that locality.

DOMINION HOMESTEAD REGULATIONS. In Manitoba, Saskatchewan and Alberta land is surveyed into townships 6 miles square divided into 36 sections of 640 acres each. Section 11 and 29 are reserved for school purposes; Sections 8 and 26 belong to the Hudson's Bay Co. Other sections are available for homesteading. Any person who is sole head of a family, or any male over 18 years old, who is a British subject, or declares his intention to become a British subject, or a widow with minor children of her own dependent on her for support, may, on paying \$10, obtain entry for a quarter section (160 acres more or less) of Dominion Lands in Manitoba, Saskatchewan or Alberta. Applicant must appear in person at the Dominion Lands Agency or sub-agency for the district. Entry by proxy may be made at any agency for a father, mother, son, daughter, brother, or sister, if eligible, and when duly authorized by the prescribed form. Duties: erection of a habitable house, 6 months' residence and cultivation of land in each of 3 years. A homesteader may live within 9 miles of his homestead on a farm of at least 80 acres, solely owned and occupied by him, or by his father, mother, son, daughter, brother or sister, or upon a homestead entered for and occupied by them within the prescribed distance. Before applying for patent, homesteader must break 30 acres and crop 20, part of work being done each year. If residing in vicinity, as stated above, he must break 50 acres and crop 30.

PRE-EMPTION. In districts of Southern Alberta and in Saskatchewan, a person who has secured a homestead may pre-empt an additional one-quarter section adjoining the homestead or separated therefrom by only a road allowance, provided he has not before obtained a pre-emption

GENERAL INFORMATION

under Dominion Lands Act. Entry fee, \$10. Duties: (1) Residence of 6 months in each of 3 years on either homestead or pre-emption. (2) Erection of a habitable house on either homestead or pre-emption. (3) Cultivation of 50 acres of either homestead or pre-emption. Price \$3 per acre, payable $\frac{1}{3}$ at end of 3 years from date of entry, balance in 5 equal instalments, with interest at 5%. Under an amendment made to the law in 1914, after earning patent for his homestead, a settler who has a pre-emption may obtain patent for such pre-emption by paying the amount of the purchase price in full and submitting proof that he has complied with all requirements of the Act up to the date of tendering payment, and that he has cultivated the whole area of 50 acres called for in connection with his pre-emption entry, or that he has complied with the requirements with respect to stock.

PURCHASED HOMESTEAD. In certain districts homesteader may obtain a purchased homestead, price \$3 per acre. Duties: (1) 6 months' residence upon quarter section so entered in each of 3 years, subsequent to entry. (2) Cultivating 50 acres thereon. (3) Erection of house thereon worth \$300. Entrant may reside on patented homestead if within 9 miles.

SUBSTITUTION OF STOCK FOR CULTIVATION. Under the recent amendment to the Dominion Lands Act, the ownership of live stock may be substituted for cultivation in the case of any homestead, pre-emption or purchased homestead, if a report from a Homestead Inspector shows that the quarter-section does not contain arable land to the extent required to obtain patent under the regulations with respect to cultivation.

DOMINION SCHOOL LANDS. These comprise Sections 11 and 29 in every township in Saskatchewan. They are administered by the Dominion Government in trust for the province, and can only be disposed of by sale at public auction to the highest bidder, subject to a certain upset price. On 1st April, 1914, 608,210.37 acres had been sold for \$8,861,745.61 or an average price of \$14.34 per acre and 7,327,853 acres remained unsold.

TERMS OF SALE. The sales are held yearly, provided the conditions are favorable, the lands being first inspected and valued to determine the upset price; terms—one-tenth cash and balance in nine equal annual instalments, with interest at 5%. Scrip or warrants are not accepted in payment. There are no settlement conditions.

GRAZING PERMITS. Grazing permits for these lands are granted annually at the rate of four cents per acre.

LEASES. Leases of these lands are issued (a) for coal mining for a term of twenty-one years at a rental of \$1.00 per acre and subject to a royalty of five cents per ton; (b) for petroleum and natural gas for twenty-one years, subject to a payment of rental from the first year at 25 cents per acre and at the rate of 50 cents per acre for the subsequent years; (c) for fire clay for a term of twenty-one years, subject to rental at a rate of \$1.00 per acre, not more than forty acres being leased to any one person; (d) for hay purposes for a term of five years, subject to the payment of rental at the rate of 25 cents per acre.

PERMITS TO CUT TIMBER—Are issued subject to the payment of dues fixed by the regulations.

EDUCATION. A school district may be formed as soon as there are 8 children in a section. In 1913 there were in the province 15 High Schools and Collegiate Institutes; 2,893 Public Schools; 15 Roman Catholic Separate Schools; 2 Protestant Separate Schools; 2,925 school districts; 1,979 High School students; 79,882 elementary school pupils; 308 first-class teachers; 1,242 second-class teachers; 945 third-class teachers. During the year 1913, 1,346 permits were issued in consequence of the shortage of qualified teachers.

FISHERIES. With increased railway facilities the fishing industry will become important. In the north the great Lake trout run up to 60 lbs.; with whitefish, pike and perch, they form the bulk of the catch. In the south, whitefish, tullibee, pike, perch, yellow perch, buffalo fish and suckers are found. In the rivers goldeyes and other fish are taken by the angler and large sturgeon occur.

FRANCHISE. To vote for a member of the Dominion or Provincial Government it is necessary to be a native-born or a naturalized British subject, with 12 months' residence in Canada and 3 months in the province. In Municipal Elections, men and women of any nationality, being property holders, may vote even on such matters as taxation.

LAKES. The lakes in Saskatchewan of more than 100,000 acres area are as follows:

Area in Acres		Area in Acres	
Reindeer (part) ..	1,473,120	Buffalo	180,000
Athabasca (part) ..	1,152,480	Dore	155,000
Wollaston	580,000	Ile à la Crosse ..	120,000
Cree	260,000	Cumberland	106,000
La Plonge	245,000	Quill	140,000
La Rouge	220,000		

LATITUDE. The British Isles lie in the same latitude as the Province of Saskatchewan. Denmark, the Netherlands, Belgium, the greater part of Germany and about half of Russia, are as far north as Regina. Edinburgh is farther north than any of the settled parts of Saskatchewan. St. Petersburg, Russia, and Chritiania, Norway, are in the same northern latitude as the northern boundary of Saskatchewan.

LUMBERING. North and east of Prince Albert, lumbering is extensively carried on. The northern forest contains white and black spruce, larch, jack pine, white poplar, balsam, white birch. The white spruce grows to a large size and is chiefly used in the manufacture of lumber. There are 4 lumber mills at Prince Albert, others at Sturgeon Lake, Crooked River, Greenbush and Etoimami. It is estimated that 9,120 workmen found employment in the lumber mills in 1913. The total output was valued at \$7,602,325. Thirty-eight planing mills had an output of \$2,295,594.

MANUFACTURES. According to statistics published by the Dominion Government, the value of manufactured products in Saskatchewan in 1910, as compared with 1900. was: In 1900, \$651,667; in 1910, \$6,332,132. In 1910, the total value of products in Regina was \$1,313,274; in Moose Jaw, \$738,818; in Saskatoon, \$683,277.

BRICK AND TILE MANUFACTURE.—Beds of excellent clay are found in many parts awaiting development. (See under Mining.) Of the clay products annually used in Saskatchewan less than 25% is manufactured in the Province.

FLOUR MILLS. An interesting feature in the situation is the establishment of "Midget Mills" costing \$5,000 with a daily capacity of 25 barrels. One of these mills will supply 2,000 people and can be operated by one man. There are many good openings. In time the large flour mills may be confined to the export trade.

POPULATION. According to the Dominion Census, the population of the province was 91,279 in 1901, 257,763 in 1906, and 492,432 in 1911, of which 291,73 were males, 200,702 females. Estimated population in 1914, 691,000.

RELIGIONS OF THE PEOPLE. In 1911, according to the Dominion Census, 57 different religions were represented, including 96,564 Presbyterians, 90,092 Roman Catholics, 78,325 Methodists, 75,342 Anglicans, 56,147 Lutherans.

ORIGINS OF THE PEOPLE. In 1911, according to the Dominion Census, there were in the province: 251,010 British,

23,251 French, 68,628 Germans, 41,651 Austro-Hungarians, 11,718 Indians, 17,405 Russians, 33,991 Scandinavians.

RAILWAYS. On Sept. 30th, 1913, the total railway mileage in Saskatchewan was 5,735, of which 5,256 miles were in operation. This mileage was made up as follows: C.P.R. main lines, 414.69; steel on branch lines, 2,090.31; double track, 95.4; mileage in operation, 2,337. G.T.P. main line, 415; steel on branch lines, 656.21; mileage in operation, 1,063. C.N.R. main lines, 400.67; steel on branch lines, 1,663.37; mileage in operation, 1,856.

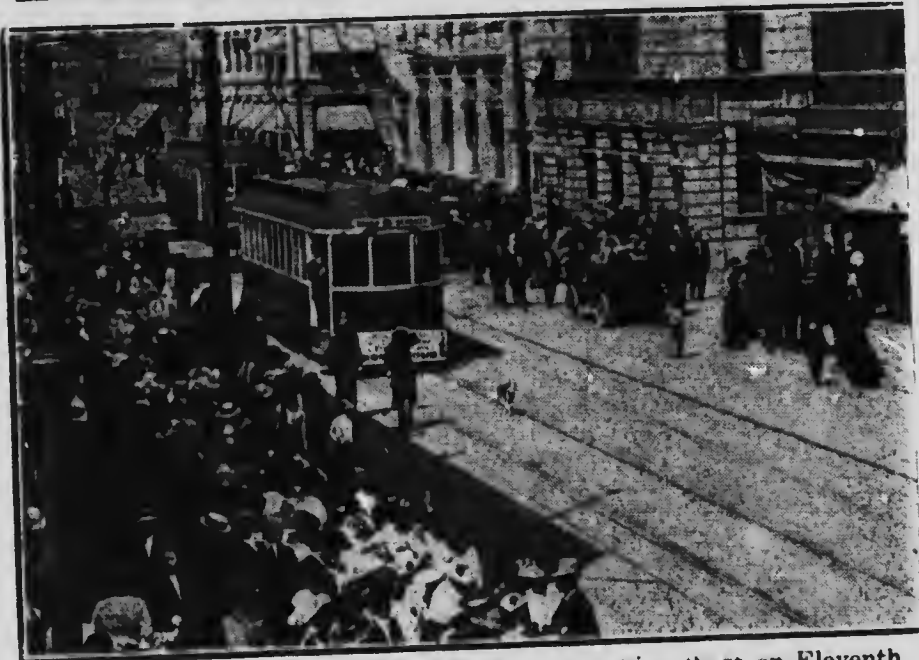
RIVERS. The province is traversed by the North and South Saskatchewan Rivers. In the farthest north is the Churchill River, emptying into the Hudson Bay; in the centre and south the Qu'Appelle and Souris Rivers.

RANCHING. Southwest Saskatchewan, West of Swift Current to the Alberta boundary and South to the International boundary, is peculiarly adapted for ranching. Cattle, horses and sheep graze the whole year. The settlers are driving the industry further north.

DOMINION GRAZING LEASES. Leases will be granted for 10 years. The maximum area granted to any one person is 12,000 acres. Application for grazing leases on any land will only be granted after inspection to determine whether the land is grazing or agricultural land. Should the Inspector of Ranches, on making examination of a tract of land applied for, find that there are conflicting interests in the land affected, and that the granting of a lease would be an injustice to other settlers who had been using the land, the same, if unfit for agricultural purposes, may be withdrawn from entry and reserved for public grazing purposes. Lessees must fence the area they obtain under lease, and must have 1 head of horses or cattle, or 5 sheep for every 30 acres. Where the inspectors consider the land will carry more stock, they will fix the number to be grazed on each area. One third of the required stock must be placed the first year on each area granted. At least 25% of the stock must always be breeding stock.

SPORT. The pronged antelope is not so plentiful as formerly, but there are still a number of herds in the rolling country in the southwest—Black bear are found in the northern part.—Black tail and White tail deer are fairly general in the valleys and timbered sections of the province.—Of ducks and geese, many varieties abound in suitable localities.—Elk and moose are found in the timbered

REGINA The Capital City



Looking West on Eleventh

Regina has been the centre of rapid development during the past few years. The population has increased from 4,000 in 1904 to 50,000 in 1914.

The industrial development of the city has kept pace with this growth of population, THE MODEL INDUSTRIAL SECTION having become a veritable hive of industry.

Read description of Regina City, on page 43

Manufacturers contemplating establishing in
INDUSTRIAL COMMISSIONER,
 LITERATURE WILL BE SUPPLIED
 COMMISSIONER, REGINA.

of Saskatchewan REGINA



Avenue, Regina, Sask.

Regina is rated as the largest centre of distribution of farm implements in the world. Exceptional opportunities for the establishment of factories are to be had here, as railway lines radiate in all directions from the city, giving access to all parts of Western Canada.

Read description of Regina District, on page 67

Western Canada should communicate with

REGINA, SASK., CANADA

UPC REQUEST BY PUBLICITY
SASKATCHEWAN, CANADA

country in the north, there are good points east of Prince Albert along the C.N.R. main line to the Manitoba boundary. Prairie chicken are common in prairie sections throughout the province.

TELEPHONE SYSTEM. In 1908, the Provincial Government purchased the plant of the Bell Telephone within the province. The Government has actively pursued the policy of stimulating the organization of local rural companies by giving to them as a bonus all the poles required for their lines. The experiment has proved a great success. The Provincial Telephone Statistics for 1913 are as follows: Long distance telephone system, 3,386; telephone offices, 201; exchanges, 94; subscribers, 16,035. Rural Companies, 341; mileage of lines, 7,615; subscribers, 8,099. Independent Systems, 30; subscribers, 1,224.

WAGES—AGRICULTURAL LABORERS. By the year, \$18 to \$30 per month, with board, averaging, say, \$25 for good men; for 8 months, \$25 to \$40 per month; for harvesting and threshing, \$40 to \$75 per month.

Agriculture

ALFALFA. The cultivation of alfalfa is attracting much interest in Saskatchewan. With the restriction of ranges by the rush of wheat growers, the rancher must provide pasturage for his herd, and alfalfa restores fertility to the farm that is exhausted by wheat growing. The Government of Saskatchewan has offered \$6,300 in cash prizes for alfalfa growing. To a varying extent it is now grown on over a thousand farms in the province. In some cases the crop is being successfully matured, and yields heavy crops of seed. The plant does best on a light sandy loam in good heart over a deep, loose, alluvial subsoil. There appears to be no climatic reason why alfalfa should not be grown with great success throughout Saskatchewan. A report of the U.S. Dept. of Agriculture states that the plant is found in Verkloyausk, Siberia, in lat. 68 degrees n., where the subsoil remains permanently frozen. See Bulletin issued by the Railway Lands Branch, Dept. of the Interior, Ottawa, Ont., and write College of Agriculture, Saskatoon, for Bulletin issued by committee in charge of the alfalfa growing competition.

BEEKEEPING. Can scarcely be called an industry in the province as yet. There are several apiaries in different parks. These are meeting with good success and make good returns.

DAIRYING. Abundant water and grass, and bluffs of trees are found in the eastern and north-eastern districts. There are seven co-operative creameries under Provincial control, four private creameries and one private cheese factory. See under Live Stock.

DRY FARMING. Is a system of soil tillage whereby the rain is stored and conserved for the use of crops. It includes: (a) Deep ploughing, to increase the absorptive capacity of the soil; (b) frequent cultivation of the surface soil during the summer to check evaporation; (c) the selection of drought-resisting crops. The wide application of these principles makes practicable the occupation by farmers of areas hitherto thought to be suitable only for ranching.

EXHIBITION PRIZES. At the 8th International Dry-Farming Congress, held at Tulsa, Oklahoma, in 1913, Paul Cerlach, of Allan, Sask., won the Grand Prize for the best bushel of hard wheat, and the prizes for the best bushel of oats, best peck of flax, best bushel of barley, and best sheaf of flax, were all won by Saskatchewan farmers.

FARMING—COST OF IMPROVING LAND. The following is an estimate of the cost of farm development, where it is done by contract work. Breaking, 3 inches deep, per acre, \$3 to \$5; harrowing, each operation, per acre, 35c.; discing 3 times, per acre, \$1.50; seeding, not including seed, per acre, 60c.; seed, per bushel, market price; fencing per mile, 3 wires, \$100 to \$125; hauling grain from nearest station to land, per mile, per bus., $\frac{3}{4}$ c.; treating grain with bluestone or formalin, per bus. (but not less than \$2), 3c.; boring wells, using steel casings, per ft., \$2.25 to \$3; boring wells, using galvanized casings, per ft., \$2 to \$2.75; cost of good work horse, \$150 to \$200; cost of milch cow, \$35; cost of sow for breeding, \$10. Coal varies with locality from 50c. per ton at mine, to \$6 per ton delivered at shipping point. A 6-roomed house, \$700; a stable to accommodate 6 horses, \$200; a cow shed to accommodate 8 head, \$400; implement shed, \$100; granary for 2,000 bus., \$100.

FARMING—COST OF STARTING. The following statement of the amount required to make a start has been approved by well-informed implement men, practical farmers and large farm land companies: 1 team horses, \$250 to \$400, according to weight; 1 set of harness, \$35 to \$40; 1 wagon, \$30 to \$90; 1 sleigh, \$35; 1 plow, \$28; 1 set harrows, \$20; 1 set disc harrows, \$35; 1 seeder, \$85; 1 mower and rake, \$95; 1 reaper and binder, \$170; other

implements, \$50 to \$75; total, \$833 to \$1,075. Prices vary in different parts of the country. The settler might start with 4 cows, \$160; 4 pigs, \$15; 4 good sheep, \$20; poultry, \$10; total, \$250. Add to this household necessities.

FARMING—RENTING ON HALF SHARES. A farm is sometimes acquired at an agreed price on the following terms: The owner purchases the seed, pays half the threshing and half the twine; the purchaser does all the work and statute labor, and delivers to the nearest elevator half his crop until the farm is paid for.

FLAX. Since 1910 flax growing has increased rapidly. At present flax is grown for seed only, which is purchased by oil mills at Winnipeg and Chicago. The fibre is too short and of too poor a quality to be worked with profit by the old process. A process has been invented for treating Western flax, and it is claimed that demonstrations show that linens of good quality can be made therefrom. Flax is recognized as one of the best crops for breaking new ground. Crop in 1913, 11,654,280 bush. (average per acre, 12). 87% of the total area under flax is in Saskatchewan. For production, see under "Grain Crops." Write for "Hints for Flax Growers," to A. F. Mantle, Dept. of Agriculture, Regina, Sask., and for Bulletin on Flax to Experimental Farm, Ottawa, Ont.

FODDER CROPS. In 1913, the hay crop of Saskatchewan was estimated to be worth \$8,250,000.

PRAIRIE GRASSES. Generally are of two classes, viz.: "Prairie wool" and "slough" or "marsh" hay.

DOMESTIC HAY. Timothy occupies the greatest acreage. Rye and brome grasses are sown to a lesser extent. Clover, alsike, alfalfa and corn are reported in limited areas. See above under Alfalfa.

FRUIT GROWING. The smaller bush fruits grow in profusion all through the province, and an excellent quality is obtained. Larger fruits are in the experimental stage as yet. A good variety of early apples has been produced on the Experimental Farm at Indian Head. The market for larger fruits is still supplied by the Ontario and British Columbia fruit lands.

GRAIN CROPS, 1913. The December estimate of the yield of the 4 principal grain crops of Saskatchewan,

prepared by the Provincial Department of Agriculture, is as follows:

	Acres Sown	Bushels Per Acre	Yield
Wheat.....	5,760,249	19.5	112,369,405
Oats.....	2,638,562	41.7	110,210,436
Barley.....	307,177	30.2	9,279,263
Flax	967,137	12.0	11,654,280

A preliminary estimate of the acreage of the four principal grain crops in 1914, gives the following returns: Wheat, 6,003,522, an increase over the previous year's acreage of 4.22 per cent.; oats, 2,792,611, increase of 5.84 per cent.; barley, 313,537, increase of 2.07 per cent.; flax, 814,720, decrease of 15.75 per cent.

LIVE STOCK. The opening of the U.S. market has given a great impetus to the live stock industry.

CATTLE. In 1914 there were in the province 204,624 milch cows and 474,436 other cattle. The Live Stock Association is an active organization. The Winter Fair, including fat stock, stallion show and bull sale, held at Regina, Sask., is a great annual success.

HORSES. In 1914 there were 309,521 horses in the province. The Government has a Stallion Enrolment Act which is of great benefit in aiding the farmers to secure well-bred stock. Clydesdales are the foremost breed in the province. Percherons make a good second. There are some Shires, Suffolk Punch and Thoroughbreds, but they are few in number when compared with the first-mentioned breeds. An Annual Exhibition is held at Regina, and is known as the Provincial Fat Stock Show. Spring Stallion Shows are also conducted by many of the Agricultural Societies. In the southwestern part of the province ranching is still carried on to a considerable extent. The horse-raising industry has been steadily increasing during the last few years, and gives great promise for the future.

SHEEP. In 1914 there were 126,027 sheep in the province. There are a few pure-bred flocks. Leicester, Shropshire and Oxford are the breeds represented. Few farmers keep sheep owing to the difficulty of guarding small flocks from coyotes and wolves. Ranching is carried on as in Alberta, flocks varying from 2,000 to 4,000. The Government have set aside certain districts where leases for grazing alone can be got. The sheep on the ranches are mostly Merino grades: the foundation flocks came from Montana. Shropshire, Oxford, Leicester and Lincoln rams are used. Few sheep are fattened during the winter



Cattle Grazing near North Battleford, see pages 15. 39 and 64.

in the province. It has been successfully tried on the wheat screenings at Moose Jaw.

SWINE. In 1914, there were 454 703 swine in the province. They are raised almost altogether for home consumption. No pork factories operate in the province, the local abattoirs using the entire output. Pork products (especially dressed bacon) are shipped in from the Winnipeg factories.

POULTRY. In 1913, reports showed \$2,500,000 worth of all kinds of poultry in the province. While almost every farmer keeps some poultry, local markets command the entire output. The Provincial Poultry Association holds a very successful annual show at Regina every winter. In connection with the Government-operated creameries, poultry fattening stations are conducted.

ROOTS AND VEGETABLES. Potatoes easily occupy the most important place among the root crops, representing at least 70% of the total acreage. Turnips and mangels are grown to some extent for feed. Sugar beets have proved very successful in some parts of the province. Practically all the smaller garden vegetables are grown, and excellent results are obtained. In 1911, 30,160 acres of potatoes were planted. The average yield was 170 bushels per acre; the total production, 5,127,200 bushels.

TREE PLANTING. To meet the lack of natural protection against wind and snow, the Dominion Government, since 1901, have distributed trees for planting in the Prairie Provinces. In many cases a large advance in farm values has resulted. These trees are raised at the Forestry Nursery Stations at Indian Head and Saskatoon, in Saskatchewan, and are distributed to applicants under defined conditions with regard to cultivation, the only charge being the cost of carriage. 45% are green ash; 30% Manitoba maple; 10% Dakota cotton-wood; 9% American elm; 4½% willow; ½% Russian poplar; Of trees set out, 85% are alive.

WHEAT. The ideal temperature for wheat is a mean summer temperature of 60 degrees. This extends as far as latitude 65 degrees. The greatest yield is nearest the northern limit of successful growth. Wheat from Fort Chippewegan, at lat. 59, took first prize in Philadelphia in 1876. Wheat from the Peace River Valley took first prize in the World's Columbian Exhibition in 1893. In the northern latitudes, four and five grains are found to the cluster, as against two grains usual in the U.S. wheat fields. This is due to the winter frosts, summer rains and

the soil, of which the chief ingredients are nitrogen, potash and phosphoric acid.

SPRING WHEAT. The leading varieties are Red Fife and Marquis, which grade hard and are known as Manitoba Hard Wheat. They fetch a higher price than any other varieties grown. The Marquis, a recent development, matures about 15 days earlier than Red Fife. A crop of 76 bushels to the acre is reported. This variety won first prize for the best bushel of wheat grown in America, at New York in 1911, and at Lethbridge in 1912. A new variety, known as Prelude, was introduced into Saskatchewan in 1913. It ripens about 2 weeks earlier than the Marquis.

COMPARISON YIELD, SASKATCHEWAN AND WESTERN STATES. For the five years, 1908 to 1912 inclusive, the average yield of Spring Wheat per acre in Saskatchewan (Dominion Government return) and the Western States was as follows: Saskatchewan, 18.87; Iowa, 16.4; Nebraska, 13; S. Dakota, 11.4; N. Dakota, 11.5; Kansas, 8.9; Minnesota, 16.2; Wisconsin, 14.7.

WINTER WHEAT. Sown in August, it grows to 6 or 8 inches in fall, passes through winter without damage and is ready for the reaper from the 1st to 15th of August. In Alberta and in some parts of Manitoba and Saskatchewan it is accounted a safe annual crop. The area found capable of growing this grain successfully is every year extending northward. The leading variety is Alberta Red, which was grown originally from Turkey Red Wheat introduced from Kansas. It has been cultivated successfully at Edmonton and Fort Vermilion, and has never failed in the south when the land was properly matured.

Mining

PROSPECTING OPPORTUNITIES. The northern portion of Saskatchewan consists of pre-Cambrian rocks, in which, in Ontario, Michigan and Minnesota, rich silicon, copper, iron, gold, pyrite, mica and other mineral deposits have been found. Northern Saskatchewan is practically virgin territory for the prospector.

CLAY. Clay suitable for making bricks is found in many localities. At Estevan the clay deposits is underlain by lignite coal.

COAL. Lignites occur abundantly in the Estevan and the Souris River field. Operations are carried on by several mining companies. A large field is being opened

up by branches of C.N.R. and C.P.R. near Wood Mountain in the south, and promising reports of discoveries come from West of Saskatoon. A colliery is operated 40 miles south of Moose Jaw.

GLASS SAND. Sand suitable for making glass occurs north east of Prince Albert.

GOLD. Dredging operations have been carried on in the North Saskatchewan River above Prince Albert, with some success.

IRON. Clay ironstone is found near the Cypress Hills in the South Western part of the Province.

MINERAL PIGMENTS. There is an extensive and valuable deposit of pigments near Duck Lake. Good samples of Ochres have been found about 100 miles north of Lloydminster, and in other localities.

PEAT. Peat bogs have been found in the north at Methy Lake and other places.

PETROLEUM. Bituminous shales occur near The Pas Mountains.

SALT. A salt spring exists in the Pasquia Hills, northeast of Prince Albert, and salt and sulphur springs are found in the western part.



Saskatchewan River at Outlook

Boards of Trade Register

**When Writing to a Local Reference, Mention Should
be Made of Heaton's Annual**

This Register is revised every year and includes certified official returns from local Boards of Trade and the municipal authorities of towns where no Board of Trade is established. Information is given generally as received. The Editors reserve the right to use information obtained from other reliable resources and to edit the returns made, but they cannot, for obvious reasons, from their own knowledge, vouch for the absolute accuracy of every detail in each case. As a general rule, entries in this register are confined to towns over 400 population. Exceptions are made in special cases. Where possible, a reliable local reference is given, who will supply further information upon request.

ABBREVIATIONS.—m., miles; Pop.,* population according to Returns of Census, 1911; Pop., estimate of Mayor or local Board of Trade; Alt., Altitude—ft. above the sea level. Altitudes are given as furnished by the Dominion Meteorological Office at Toronto.

POPULATION STATISTICS.—The rapid settlement of the country makes it extremely difficult to give accurate population statistics. As a rule the figures are taken from local estimates, based on Assessment Returns or a Special Civic Census.

Chief Town of Judicial District marked ¶

Towns represented among illus. Advts. marked †

ALAMEDA, on C.P.R. Estevan Branch, 132 miles s.e. of Regina. Hotel, Alameda. 3 churches, brick schools, bank. Industries, 5 elevators (200,000 bush.), telephone, lumber yard, garage and machine shop. Alt. 1,894. Pop. 450.

SPECIAL OPPORTUNITIES.—Flour mill, creamery, land mortgages, general store, veterinary surgeon, barrister, machine repair shop, elec. light plant. Write Sec. Alameda Progressive Assn.

ALSASK, so named because it is situated on boundary between Alberta and Saskatchewan, 169 miles s.w. of Saskatoon, on C.N.R. (Goose Lake br., Saskatoon to Calgary). Hotel, Royal \$2. 3 churches (Ang., Pres., Meth.), school, bank, newspaper, 4 lumber yards, 2 liverys, 10 stores, 2 elevators. Sub-agency Dom. Lands for E. Alberta. Townsite is owned by C.N.R. Pop. 400.

SPECIAL OPPORTUNITIES.—Doctor, bank, hotel. Write Sec. Bd. Trade.

ARCOLA, on C.P.R. Arcola branch, 113 miles s.e. of Regina, 253 miles w. of Winnipeg. Div. point. Hotels, Arcola, Metropolitan. 4 churches, public and high schools. 2 banks. Town owns gravity system water-works. Elec. light (private franchise), court house, \$16,000 town hall, 2 theatres. Industries, 6 elevators (162,000 bush.), flour mill, brick plant, telephone, 2 lumber yards, aerated water works, machine shop, newspaper, 3 livery stables, laundry and several stores. Centre of Cannington Judicial District, Land Titles building. Centre of wheat-growing district. Fish Lake 18 miles n., beautiful summer resort with good boating, bathing, fishing, summer cottages and summer hotel. Splendid shooting within five miles; big game within 15 miles. Alt. 1,982. Pop. 1,200.

NOTE.—C.P.R. completed extension to roundhouse and 3 miles additional trackage in yards in 1914.

SPECIAL OPPORTUNITIES.—Sash and door factory, another general store, abattoir, creamery, tailor, first-class restaurant, another doctor. See under "Agric. and Fruit Districts." Write Sec. Bd. Trade.

ASQUITH, 28 miles w. of Saskatoon, 300 miles e. of Edmonton, 520 miles w. of Winnipeg, on C.P.R. Edmonton line and G.T.P. main line. Hotel, Arlington \$1.50. 4 churches, brick public school, town hall, fair and exhibition grounds with race track. Bank, newspaper, 4 elevators (125,000 bush.), flour mill (125 bbls. daily), machine shop, auto garage, 2 liveries, 5 implement agents, wholesale oil distributing plant, 3 general stores, 2 hardware, several others. Good brick clay at hand. A grain-growing and dairying district, with increasing mixed farming and horse breeding. Great demand for dairy produce in Saskatoon market. Pop. 350.

SPECIAL OPPORTUNITIES.—Brick yard, oatmeal and grist mills, another flour mill, lawyer, dentist. Write Clerk of Municipality.

ASSINIBOIA, 1st divisional point w. of Weyburn on C.P.R. Winnipeg-Lethbridge short line, 425 miles w. of Winnipeg, 125 miles s.w. of Regina. Hotel, El Prado. 4 churches (Ang., R.C., Bapt., Meth.), new \$25,000 brick school, 3 banks. 5 elevators (205,000 bush.), roundhouse, coal chute, turntable, machine shop, steamfitter, 5 implement houses, 3 auto garages, 3 liveries, photographer, newspaper, moving picture theatre, roller skating rink, Land Titles Office, 3 wholesale oil cos., carrying large stock; 8 lumber yards, 8 general stores, 4 hardware, 25

others. Abundant lignite coal within 7 miles. Clay deposits, sand and gravel in immediate vicinity, Govt. and rural telephones. Ample supply of pure water. Rich mixed farming district, chiefly flax, wheat and oats. Good goose shooting. Rifle Club. Turf Club. Automobile Club. Pop. 1,200.

NOTE.—C.P.R. Moose Jaw to Assiniboia, via Estevan, practically completed. 2nd hotel under construction. Electric light and water plant under construction.

SPECIAL OPPORTUNITIES.—Brick yard, steam laundry, sash and door factory, flax mill, grist mill, oatmeal mill, flour mill, first class machine shop. Mortgage loans on improved farms and town property. See under "Agriculture and Fruit Districts." Write Sec. Bd. Trade.

BALCARRES, on Kirkella br. C.P.R. and Melville-Regina br. G.T.P., 50 miles n.e. of Regina. Telephone, long distance, rural and local. Hotel, Balcarres \$2, Plaza. 3 churches, school, bank. Fine town hall. 2 lumber yards, newspaper, 2 livery stables, 5 elevators, several stores. Pop. 542.

SPECIAL OPPORTUNITIES.—Grist mill, wagon repairer. Write Sec. Bd. Trade.

BALGONIE, on C.P.R. main line, 18 miles e. of Regina. Telephone, long distance and local. Hotel, Commercial \$2. 3 churches, school, bank. 4 elevators, lumber yard. 2 livery stables, laundry, race track and ball grounds, flour mill, skating rink. Alt. 2,187. Pop. 368.

SPECIAL OPPORTUNITIES.—Creamery, flax mill. Write the Mayor.

BATTLEFORD, at confluence of Battle and Saskatchewan Rivers, with 6 steel bridges; 90 miles w. of Saskatoon, 254 miles e. of Edmonton, on C.N.R. and G.T.P. Govt. local and long dist. telephones. Hotels, Windsor, King George \$2.50, Queen's \$1.50. 4 churches, \$30,000 high school, 2 public schools, 3 banks. Judicial centre, court house, Land Titles office, \$40,000 town hall, Dom. Lands office, meteorological office, R.N.W.M.P. Div., 22nd Co. Sask. Light Horse. Elevator (30,000 bush.), cement brick plant, machine shop, 2 weekly newspapers. Centre of a fine mixed farming country, with clay for brick and tiles. Town owns elec. light, water and sewerage systems. Streets 99 ft. wide. Gun Club, assoc. football, baseball, ice hockey, skating and curling rinks, cricket, 3 tennis clubs. Very good duck and prairie chicken shooting; fishing. Alt. 1,602. Pop. 1,500.

NOTE.—Additional ry. lines expected: G.T.P. Saskatoon-Battleford, bonds guaranteed by Govt. Dominion N.W.R. Regina-Fort Mackay via Battleford chartered.

SPECIAL OPPORTUNITIES.—Municipal flour mill for sale (100 bbls.), perfect condition; biscuit and candy factory, wholesale hardware, dry goods, packing plant. Free sites See under "Agric. and Fruit Districts." Write for free literature to Sec. Bd. Trade.

BIGGAR, 527 miles w. of Winnipeg, 160 miles w. of Saskatoon, 268 miles e. of Edmonton, on G.T.P. main line (div. pt.) and Biggar-Battleford branch; on C.P.R. Winnipeg-Edmonton line. Hotels, Biggar, Empire \$2. 3 churches, \$15,000 school, bank. Town owns water system. 3 elevators, 6 implement agents, 2 liveryies, 14 car-loading platforms, auto livery, 3 lumber yards, sash and door factory, wholesale oil distributing plant, wholesale grocery and supply house for G.T.P., 4 general stores, 14 others, newspapers and printing office. Brick clay, sand and gravel. A grain-growing, mixed farming and ranching district. Mineral lake 2 miles s. Fishing and hunting. Pop. 1,450.

NOTE.—G.T.P. Biggar-Calgary line built as far as Loverna.

SPECIAL OPPORTUNITIES.—Flour and grist mill, oatmeal mill, meat packing plant, machine shop, brick yard, cement block plant, wholesale grocery, lawyer, tinsmith and plumber. Write Sec. Bd. Trade.

BREDENBURY, 250 miles w. of Winnipeg, on C.P.R. Hotel, Grand Central. 3 churches, school, bank, 7 stores. Pop. about 500.

SPECIAL OPPORTUNITIES.—Flour mill, creamery, cement block plant. Write Sec. Bd. Trade.

BROADVIEW, on C.P.R., 265 miles w. of Winnipeg. Hotels, Broadview, King Edward. 5 churches. Industries, 3 elevators (81,000 bush.), 2 oil cos., sewing machine co., brewery, fruit warehouse, brick plant, telephone, 2 lumber yards, newspaper, 2 livery stables, wholesale warehouse, 15 stores. Alt. 1,960. Pop. 1,209.

SPECIAL OPPORTUNITIES.—Flour and grist mill, creamery, pork packing, dentist, steam laundry, real estate agent. Write Sec. Bd. Trade.

†**CANORA**, on C.N.R. main line and Russell-Rossburn branch. Present terminus of G.T.P. Regina-Hudson Bay branch, 303 miles n.w. of Winnipeg, 193 miles n.e. of Regina. Local and long distance telephone. Hotels, Chamberlain \$2 to \$2.50, Imperial, Canora. 4 churches,

CANORA, SASK.

Farmers, read the description of Canora District, on page 57, and write for further information.



A Public School at Canora

BUSINESS AS USUAL

We are furnishing train loads of oats, flour, bacon, butter, meats at war prices, grown on the CHEAPEST good land in Canada.

FOR PRICES OF LANDS, WIL

SECRETARY, BOARD OF

WANTED Pork Packing Plant, Foundry and
(fine clay deposit near town)

K. CANORA, SASK.

Business Men, read the description of Canora, on page 23, and write for further information.



A New Business Block at Canora

FEEDING THE EMPIRE

Railways, Mills, Elevators, Creamery, every modern facility for economical production, an unlimited market at extremely profitable prices.

FOR IMPROVED, ADDRESS

OF TRADE, CANORA, SASK.

Machine Shop, (free building and site), Brick Yard, Cheese Factory, 1000 Farmers with some capital.

public school, 2 banks, 6 elevators (200,000 bush.), newspaper, Agric. Society and exhibition grounds (160 acres), race track, grand stand; \$50,000 hospital, \$40,000 municipal elec. light plant (rate 12c. per k.w.h. net). Flour mill, egg-preserving industry, creamery, 2 lumber yards, 3 liverys, 3 motor liverys, 7 general stores, 2 oil warehouses. A mixed farming district. Pop. 1,200.

NOTE.—G.T.P. to Le Pas, surveyed.

SPECIAL OPPORTUNITIES.—Mixed farming, brick yard, (fine clay deposits), cereal mill, meat packing plant, lawyer, shoe store, dry goods store. New industries assisted in proportion to capital invested, by cheap sites, low taxes and elec. power. See under "Agricultural Districts" and illus. Advt. Write for free pamphlet to Sec.-Treas. Bd. Trade.

CARLYLE, on C.P.R. Arcola br., 123 miles s.e. of Regina, and C.N.R. (div. point) Maryfield and Lethbridge br. Local and long dist. telephones. Hotels, Del Monte, Carlisle House. 3 churches (Ang., Pres., Meth.), school, bank. Industries, 5 elevators (200,000 bush.), 1 lumber yard, newspaper, public and high schools, stores. Summer resort at White Bear Lake, 8 miles north, with good fishing, hotel and 40 summer cottages. Alt. 2,064. Pop. 458.

SPECIAL OPPORTUNITIES.—Flour mill, creamery, wholesale houses, brick yard, electrician. Write Sec. Bd. Trade.

CARNDUFF, on C.P.R. Estevan br., 106 miles s.w. of Brandon, 12 miles n. of International Boundary. Hotel, Avonmore, \$2. 4 churches, high and public schools, town hall, opera house, newspaper, court house, club, bank, 5 elevators, flour mill (daily cap. 100 bbls.), creamery, sash and door factory, auto repair shop, 2 liverys, carriage shop, furniture dealer, 4 implement agents, 2 restaurants, 2 large general, 3 hardware and about 20 other stores. Public library. Town owns gas lighting and telephone systems, connecting with Govt. telephones. A rich mixed farming district. Good water supply. Alt. 1,723. Pop. 600. Pop. of district, 3,000.

SPECIAL OPPORTUNITIES.—Planing mill, machine shop, steam laundry, photographer, furniture dealer. See under "Agric. and Fruit Districts" and illus. Advt. Write Sec. Bd. Trade.

CRAIK, on C.N.R. Regina-Saskatoon-Prince Albert branch, 73 miles n. of Regina, 87 miles s. of Saskatoon. Telephone. Hotels, Waldorf \$2, European \$1.50. 3 churches (Ang., Pres., Meth.), public school, agricultural

fair grounds with half-mile track, town hall, tennis courts, skating rink, 2 banks, newspaper, 4 elevators (145,000 bush.), 3 livery stables, garage, 3 lumber yards, oil distributing warehouse, 4 implement warehouses, general and hardware stores. Good duck and prairie chicken shooting. Pop. 435.

DAVIDSON, on C.N.R. Winnipeg, Regina and Prince Albert line, 91 miles n.w. of Regina. Hotels, Great West, Davidson. 3 churches (Ang., Pres., Mcth.), 1 brick school. Town owns elec. light and power plant. Kate 15c. 2 banks. Centre of magnificent wheat district. Pop. 600.

SPECIAL OPPORTUNITIES.—Brick making, mortgages. Write Mgr. Royal Bank.

DUCK LAKE, on Duck Lake, 211 miles n. of Regina, 46 miles n. of Saskatoon, 38 miles s. of Prince Albert, on C.N.R. Regina-Prince Albert line. Hotels, King's \$2, Queen's. 2 churches (Ang., R.C.), public and R.C. schools, Indian school. Town hall, agric. fair grounds, race track, opera house, Sub-agency Dom. Lands. Elec. light, bank, elevator, stock yard, oil supply station, flour mill, 2 lumber yards, woodworking shop, 3 liverys, auto garage, 4 implement agents, 3 restaurants, drug store, 6 general stores, several others. Lumber is plentiful. A grain-growing, mixed farming and stock-raising country. Fishing and hunting. Pop. 800.

NOTE.—Protestant school (\$6,000), and Town Hall (\$11,000) will be completed early in 1915.

SPECIAL OPPORTUNITIES.—Creamery, machine shop, dentist, laundry. Write Sec. Bd. Trade.

ELBOW, on South Saskatchewan River and on C.P.R., 75 miles n.w. of Moose Jaw. Hotels, Kings, Maple Leaf, Royal. 3 churches (Pres., Ang., Luth.), school, bank, elec. light. Water system owned by town. Pop. 475. Write Sec.-Treas. of Village.

ESTEVAN, on Souris River, on C.P.R. Soo-Spokane line, terminus of Estevan Sec., giving direct connection with Winnipeg, 290 miles e., on C.N.R., connecting with all main lines. 145 miles s.e. of Moose Jaw. Hotels, International, Empire \$2.50, Clarendon \$2, Windsor and Talbot. 8 churches, 3 public schools and collegiate institute, 5 banks, \$40,000 post office, \$20,000 town hall, municipal electric light plant, gas plant, up-to-date waterworks, sewerage and fire department, Sask. Govt. coal-testing plant, 6 elevators (215,000 bush.), flour mill, 3 brick plants, pottery, telephone, 3 lumber yards 2

newspapers, 3 livery stables, steam laundry, 2 garages, 3 distributing implement warehouses. Estevan Coal and Brick Co. employ 125 men. Peterson & Bardsley Brick Co. Dominion Lands Office. Alt. 1,860. Pop. 5,000.

NOTE.—C.P.R. Neptune-Lethbridge br. under construction, 55 miles completed. Electrical gas producer plant, now being installed, will supply power at about 1c. per k.w.h.

SPECIAL OPPORTUNITIES.—Pottery, brick and cement plants, furniture, paper mill, flour mill, hotel. Cheap fuel available. See under "Agric. and Fruit Districts." Write Publicity Commissioner, Bd. Trade.

FRANCIS, on C.P.R. Arcola branch, 40 miles s.e. of Regina. Pres. church, public school, bank. Industries, 5 elevators (118,000 bush.), waterworks system, telephone, garage, 2 lumber yards, 2 general stores, 4 implement agents, blacksmith shop. 2 livery stables. Pop. 400.

SPECIAL OPPORTUNITIES.—Flour and oatmeal mills, hotel, jeweller, cement works, shoe shop, dentist, furniture store, brick yard, dressmaker, grist mill.

GOVAN, 70 miles n. of Regina, 100 miles s.e. of Saskatoon, on C.P.R. Hotel, Silver Plate \$2 up. 4 churches (Ang., Meth., Pres., R.C.), school, town and fire hall, skating and curling rink, agric. and recreation park, race course, 2 banks. Town owns elec. light system. 1,000 h.p. available. 2 restaurants, machine shop, sash and door factory, 2 lumber yards, 2 liveries, printer, 2 general stores, 12 others. Summer resort at Arlington Beach on Last Mountain Lake (15 miles). Boating, fishing, tennis, baseball, golf, cricket, etc. Pop. 750.

SPECIAL OPPORTUNITIES.—Land investments, dentist. Write Sec. Bd. Trade.

GRENFELL, on C.P.R. main line, 280 miles w. of Winnipeg. Hotels, Granite, Windsor \$2.00. 6 churches, public and high schools, 2 banks, 6 elevators (210,000 bush.), grist mill, flour mill, telephone, 2 lumber yards, newspaper, armoury. Alt. 1,957. Pop. 709.

SPECIAL OPPORTUNITIES.—Butter and cheese factory, brick yard, improved and wild farm lands, first mortgages on farms and chattels. Write Sec. Bd. Trade.

GULL LAKE, on main line C.P.R., 144 miles w. of Moose Jaw. Hotels, Lakeview, Clarendon \$2. 4 churches (R.C., Meth., Pres., Ang.), public school, 2 banks, 5 lumber yards, 5 livery stables, several stores, 4 elevators, 5 restaurants, sash and door factory, wholesale liquor store. 2 parks. Pop. 1,200.

SPECIAL OPPORTUNITIES.—Flour mill, steam laundry. Write Sec. Bd. Trade.

HANLEY, on C.N.R. Winnipeg, Regina and P. Albert line, 122 miles n.w. of Regina, 40 miles s.e. of Saskatoon. 4 churches, 1 school, with high school dept., \$30,000 municipal hall, 5 elevators (150,000 bushels), elec. light plant. Alt. 1,869. Pop. 800.

SPECIAL OPPORTUNITIES.—Flour mill, jeweller store, furniture store, splendid farm lands adjoining. Write Sec. Bd. Trade.

HERBERT, on C.P.R. main line, 82 miles w. of Moose Jaw. Hotels, Commercial, Herbert, \$2.00. 5 churches, six-room public school, 2 banks, Sub-agency Dom. Lands, Agric. Society, \$11,000 town hall, fire hall, elec. light, rural, local and long distance telephones, rink, 5 elevators (140,000 bush.), 3 lumber yards, 3 liverys, 2 motor liverys, flour mill (100 bbls.), and elevator (15,000 bush.), laundry, 4 general stores, 2 restaurants, weekly newspaper, citizens' band. Pop. (Police Census, May, 1913), 1,002.

SPECIAL OPPORTUNITIES.—Brick yard, creamery, dentist, veterinary surgeon. See under "Agric. Districts." Write Sec. Bd. Trade.

HEWARD, on C.P.R. Arcola branch, 80 miles e. of Regina. Hotel, Heward. 3 churches, school, bank. Local and long dist. telephones. 3 elevators (83,000 bush.), chop, ping mill, machine shop, general repair shop, 2 lumber yards, newspaper, boarding house, livery stable, and 7 stores. Pop. 600.

NOTE.—Elec. light plant and new bank building to be completed in 1915.

SPECIAL OPPORTUNITIES.—Flax mill, linseed oil mill, flour mill, livery, druggist, doctor, newspaper, real estate agent, dentist, lawyer. Write Agent C.P.R.

HUMBOLDT, Central division on C.N.R. main line, 425 miles w. of Winnipeg, 426 miles e. of Edmonton. Hotels, Arlington, Windsor, Humboldt. 5 restaurants. 3 churches, \$63,000 public school, separate and high schools, business college, 3 banks. Govt. local and long dist. telephones. Judicial centre with court house, etc. Land titles registration district with Land Titles office. Dom. Lands office, customs clearing house, city hospital (30 beds), elec. light system, waterworks, fire brigade, recreation grounds, park, curling and skating rinks, tennis court, dramatic club, race track, summer and winter sports. C.N.R. yards with 10 miles of tracks, flour mill (100 bbls.), 5 elevators (150,000 bush.), creamery, cold storage, wood mfg. co., 5 lum-



Harvesting a Bumper Crop near Moose Jaw.

ber yards, implement warehouse, 2 oil warehouses, 4 dairy farms, 4 laundries, newspaper, machine shop, 2 auto garages, 4 liverys, 6 general stores, over 20 others. Centre of a fine mixed farming district. Deposits of clay, sand and gravel. Summer resort with medicinal waters at Humboldt beach, boat houses, bathing, pavilion, etc. Pop. 2,400.

SPECIAL OPPORTUNITIES.—Bricks and clay products, cement works, meat packing, fruit and vegetable cannery, steam laundry, oatmeal mill, brewery, tannery, cold storage, manufacture of soap, starch, shirts and overalls, alcohol, cheese, board and paper boxes, twine and cordage, linseed oil, boots and shoes, biscuits, bags, tents and mattresses, machine repair shop and garage, wholesale houses, distributing warehouses, machine shop, building contractors, departmental stores, tinsmith, express delivery. See under "Agric. and Fruit Districts." For free literature and information, write Commissioner Bd. of Trade.

IMPERIAL, on C.P.R., 83 miles n. of Regina. Hotels, Imperial \$2. 2 churches, school, bank, machine shop, 3 general stores, 3 lumber yards. Good fishing and shooting. Pop. 425.

SPECIAL OPPORTUNITIES.—Dentist, furniture store, jeweller and tailor. Write Sec. of Town.

INDIAN HEAD, on C.P.R. main line, 40 miles e. of Regina. Hotels, Imperial \$2, Balmoral \$1.50, Commercial \$1.50. 4 churches, high school, 2 banks, 10 elevators (356,000 bush.), flour mill, elec. light plant, telephone, 2 lumber yards, 2 newspapers, 3 livery stables, door and fanning mill factory, aerated water factory. Dominion experimental farm and forestry farm situated here. Sewerage and waterworks systems. Fine town park. Alt. 1,924. Pop. 1,285.

NOTE.—Forestry offices and drill hall under construction.

SPECIAL OPPORTUNITIES.—Town offers inducements to new industries. Write Sec Bd. Trade.

KAMSACK, at confluence of Assiniboine and White Sand Rivers, 279 miles w. of Winnipeg, div. point on C.N.R. main line. Hotels, King George \$2.50, Russell, Windsor, 3 churches (Ang., Pres., R.C.), large brick public school, public library, athletic and fair grounds, half-mile race track, 2 banks. Newspaper, 3 elevators (105,000 bush.), brick yard, 2 lumber yards, 5 implement agents, 3 liverys, stock yards, wholesale oil distributing plant, 5 general stores, 2 hardware and about 15 others. Unlimited brick

clay 1 mile from town, also sand, gravel and limestone. Spruce, cedar and birch 15 miles n.e. of town. The commercial and distributing centre of a rich mixed farming district, shipping large quantities of hogs and cattle. Good fishing, shooting and hunting. The Dominion Govt. are establishing a summer resort at Island Lake (14 miles); good boating and bathing, fine sandy beach. Tennis, baseball, gun and rifle, and football clubs. Pop. 1,300.

NOTE.—Municipal electric light plant, waterworks, sewerage system, cement sidewalks, under construction. By-laws all passed.

SPECIAL OPPORTUNITIES.—Sash and door factory, pork-packing plant, oatmeal, flour and flax mills, concrete block plant, machine shop, steam laundry, creamery, cheese factory, real estate. Abundant water power from Assiniboine River awaiting development. Another lawyer. Liberal inducements in taxation, sites, water and light to new industries. See under "Agric. and Fruit Districts" and illus. Advt. Write for illustrated booklet to Sec. Bd. Trade.

KERROBERT, 220 miles n.w. of Moose Jaw, 227 miles s.e. of Edmonton, 145 miles s.w. of Saskatoon. Div., junc. and terminal pt. on C.P.R. Minneapolis-Edmonton direct line, Moose Jaw-Lacombe br., and Kerrobert-Cutknife br. Hotels, King George, Windsor \$2. 3 churches, \$30,000 brick school, fire hall, municipal waterworks, 2 banks, 2 parks, exhibition grounds and race track, court house, Sub-agency Dom. Lands, \$9,000 skating and curling rink, newspaper, moving picture theatre. Judicial centre. 2 elevators (60,000 bush.), cement blocks plant, steel and iron works, machine shop, 5 implement agents, 3 liverys, auto livery and garage, 5 lumber yards, oil distributing plant. Calgary Brewery Co.'s wholesale distributing plant, 4 general stores, 15 others. Deposits of sand and gravel. A rich grain-growing and mixed farming district. Duck and goose shooting, tennis, lacrosse, gun, baseball and hockey clubs. Pop. 1,100.

NOTE.—C.P.R. br. to Suffield on main line chartered.

SPECIAL OPPORTUNITIES.—Sash and door factory, flour mill, linseed oil mill, steam laundry, cereal mill. Wholesale distributing houses in any line can control large area in W. Saskatchewan and E. Alberta. Track-age sites offered to wholesalers, distributors and jobbers at cost. Other liberal inducements. See under "Agric. and Fruit Districts." Write Sec. Bd. Trade.

KINDERSLEY, div. pt. on C.N.R. (Sask.-Cal.-Goose Lake br.), 126 miles s.w. of Saskatoon, 200 miles e. of Calgary. Hotels, Seymour, Kindersley \$2. 4 churches (Ang., Pres., Meth., R.C.), \$30,000 public school, water and electric light systems, theatre, hospital, 2 banks, 4 elevators (120,000 bush.), 7 lumber yards, 4 liveryies, 2 garages, 2 newspapers, 5 implement warehouses, 3 oil cos.' distributing warehouses, machine shops, 5 general stores, harness maker. Assoc. football, hockey and baseball clubs, turf club. Judicial centre. Sub-agency Dom. Lands office, agricultural society, volunteer fire brigade, local and long dist. telephones. Assessment, 1914, \$1,500,000. Grain district, flax predominating. Pop. 1,223.

NOTE.—Govt. judicial buildings to be completed in 1915.

SPECIAL OPPORTUNITIES.—Flour mill, woodworking establishment, linseed oil mill, brick yard, shoemaker, market gardens, farm lands. Write Sec. Bd. Trade for free booklet.

LANGHAM, on C.N.R., 25 miles n.w. of Saskatoon. Hotels, Western Central \$1.50, \$2.00. 4 churches (Ang., R.C., Pres., Mennonite), public school, 2 banks. Town owns elec. light plant. Pop. 500. Write Sec. Bd. Trade.

LANIGAN, on C.P.R., 70 miles e. of Saskatoon. Hotel, Lanigan \$2. 3 churches (Ang., Pres., Meth.), public school, telephone (local and long distance), town hall, 2 banks, 3 elevators (95,000 bush.), oil distributing warehouse, 2 lumber yards, 2 livery stables, newspaper, race track, athletic ground. Water piped into town from 4 miles distant by C.P.R., for railroad purposes. Pop. 500.

SPECIAL OPPORTUNITIES.—Flour mill, creamery, sash and door factory, baker. Write Pres. Bd. Trade.

LASHBURN, on C.N.R. main line, 169 miles e. of Edmonton. Local and long dist. telephones. Hotel, Imperial \$2. Fine Ang. church (private gift), rectory and cottage hospital, Meth. and Pres. churches, public and high schools, bank. Elec. light plant, 2 restaurants, newspaper, laundry, 3 elevators, chopping mill, 2 lumber yards, 2 liveryies with motor car, 3 implement agencies. Pure-bred stock farm in neighborhood. Fine grain-growing and mixed farming district. Brick clay deposits nearby. Pop. 400.

SPECIAL OPPORTUNITIES.—Creamery, flour mill, brick yard, cement works, dairy. Municipality offers every possible assistance to new industries. Write Sec. Bd. Trade.

LEMBERG, on C.P.R., 65 miles from Regina. Hotel, Minto. 5 churches (Pres., Meth., Bapt., R.C., Lutheran), bank, machine shop. Shipping centre for large grain-growing district (over one million bush. shipped in 1914). Summer Resorts at Katapawa Lake, 25 miles. Pop. 500.
SPECIAL OPPORTUNITIES.—Flour mill, brickmaker. Write Sec. Bd. Trade.

LLOYDMINSTER (the original Barr Colony town), on C.N.R. main line, 170 miles e. of Edmonton, 200 miles w. of Saskatoon, on border line of Saskatchewan and Alberta. Hotels, Royal George, Britannia, Alberta, all \$2. 5 churches (Ang., Pres., Meth., Bapt., R.C.), 2 public schools, 2 banks, 2 concert halls, immigration hall, 2 flour mills (125 bbls. and 25 bbls.), theatre, Govt. creamery, electric power plant, cement brick works, 3 liverys and motor, 3 lumber yards. Headquarters 22nd Saskatchewan Light Horse. \$40,000 public offices bldg. Local branch of Overseas Club have comfortable clubroom. Fine shooting: Prairie chicken, partridge, wild duck, geese, rabbits. Surrounded by good grain-growing and mixed farming district, which has won outright the \$1,500 Colorado Trophy (open to the world) for oats. Summer resort at Three-Mile Lake. Pop. 800.

NOTE.—The town is putting in water and sewer systems.
SPECIAL OPPORTUNITIES.—Steam laundry, sash and door factory. Electric power at 15c. per k.w. hour. 8% first mortgages. Write Publicity Commissioner, Bd. Trade.

LUMSDEN, on C.N.R. Win., P. Albert and Regina line, in Qu'Appelle Valley, 20 miles n.w. of Regina. Hotels, Lumsden \$2. 3 churches, public school, 2 banks, 4 elevators (117,000 bush.), opera house, local telephone, electric light plant, flour mill, newspaper. Centre of fine grain section. Good spring water, Last Mountain Lake, 10 miles distant. Alt. 1,620. Pop. 900.

SPECIAL OPPORTUNITIES.—Foundry and machine shop, brick yards, cement block factory. Good sand and gravel close by. Write Sec. Bd. Trade.

MAPLE CREEK, on Maple Creek. On C.P.R. main line, 64 miles e. of Medicine Hat. Hotels, Commercial, Jasper, Cypress, Maple Leaf. 4 churches, public school, 2 banks, town hall, armory, park, Dom. Lands office, agricultural grounds, race track, hospital, opera house, 4 elevators, flour mill, implement factory, 5 implement warehouses, 7 lumber yards, newspaper, 5 livery stables. Water and sewerage systems, elec. light plant. Mixed

farming district. Free homesteads available. Alt. 2,495. Pop 2,000.

NOTE.—Town hall under construction. Oil and gas wells to be drilled. Franchise granted for supplying town with gas.

SPECIAL OPPORTUNITIES.—Mineral water factory, brick yard, sash and door factory, skating rink, real estate investments, farm mortgages. Write Sec. Bd. Trade

MELFORT, 500 miles n.w. of Winnipeg, 100 miles n.e. of Saskatoon, freight terminal point of C.N.R. Winnipeg to Prince Albert line. Hotels, Melfort, Ozark, Humboldt \$1.50 up. 4 churches (Ang., Pres., Meth., Hornerite), new \$60,000 high school. New Government building containing post office, customs port of entry and armoury. Town hall, Dominion Lands office, park and agric. fair grounds, agric. building, half-mile race track, hospital and nurses' home (22 beds). Town owns electric light, water-works and sewerage systems, 2 newspapers, theatre, photographer, 3 banks, 5 elevators (135,000 bush.), 2 machine shops, chopping mill, Government creamery, sash and door factory, 3 lumber companies, 4 implement agents, 3 liverys, 2 auto garages. Wholesale oil distributing plant, 5 general stores, 4 hardware and about 25 others. Unlimited lumber within 40 miles, spruce, tamarac, black and white poplar. Abundance of gravel in immediate vicinity. Distributing centre of rich and extensive mixed-farming district, shipping large quantities of hogs, cattle and horses. Controls trade of Carrot River Black Loam Belt. Good shooting. Pop. 1,800.

NOTE.—C.N.R. Humboldt to Melfort and Vonda to Melfort under construction. C.N.R. Melfort to Le Pas, Canora to Melfort and Thunderhill to Melfort, chartered and bonds guaranteed by Provincial Govt. C.P.R. Sheho to Melfort line chartered and surveyed.

SPECIAL OPPORTUNITIES.—Pork packing plant, electrical supply house, foundry, brick yard, cement block plant. Inducements to industries and wholesalers. See under "Agricultural Districts." Write for illustrated literature and booklets to Sec. Bd. Trade.

MELVILLE, on G.T.P. main line and Melville-Regina br., 279 miles w. of Winnipeg, 98 miles n. of Regina. Pass. and freight div. point. G.T.P. shops. Hotels, Windsor \$2.50, Waverley, Commercial \$2. Centre of judicial district. 7 churches, 4 public schools, Lutheran College, Government telephone system, municipal hospital, 2 parks, skating and curling rink, electric light and water-

NORTH BA

SPLENDID OPPORTUNITIES FOR GR



Thousands of dollars are made annually by farmers
The famous North Battleford District offers the
mill, elevators, creamery,

Read description of North Battleford on page 39

FOR MAP OF THE DISTRICT

COMMISSIONER, BOARD OF TRADE, NORTH

BATTLEFORD

GRAIN GROWERS AND STOCK RAISERS



farmers in the famous North Battleford District—raising hogs

Offers the LAND SEEKER an ideal location, close to flour
mery, public market and railways.

Read description of North Battleford District on page 64

DISTRICT AND LITERATURE, WRITE

NORTH BATTLEFORD, SASK., WESTERN CANADA

works, fire hall, 2 banks. 2 oil dist. warehouses, 2 elevators (65,000 bush.), flour mill (125 bbls.), cement brick plant, Govt. creamery. Nearest point on G.T.P. main line for Qu'Appelle Valley, providing good shooting, boating and fishing. Pop. (Sworn Town Census, May, 1913), 3,050.

NOTE.—Municipal sewerage system under construction.

SPECIAL OPPORTUNITIES.—Steam laundry, linseed oil factory, cheese factory, wholesale distributing houses. Inducements to new industries. See under "Agric. Districts." Write Sec. Bd. Trade.

MILESTONE, on C.P.R., 54 miles s.e. of Moose Jaw. 6 elevators (152,000 bush.), electric light plant, telephone, 3 lumber yards, 2 banks, newspaper, 2 livery stables, 1 meat packing plant, confectioner, several stores. Pop. 436.

SPECIAL OPPORTUNITIES.—Flour mill, baker denist. Write Agent C.P.R.

MONTMARTRE, 56 miles e. of Regina, 166 miles w. of Brandon, on C.N.R. Hotel, Grand \$2. 2 churches (Meth., R.C.), public school, fire hall, jail, council chamber, skating and curling rink, bank. Village owns water system. Auto garage and repair shop. 11 stores. Lake Chapleau 2 miles east. Good duck and prairie chicken shooting. Pop 450.

SPECIAL OPPORTUNITIES.—Flax mill, flour mill, sash and door factory. Write Sec. Bd. Trade.

MOOSE JAW, on Moose Jaw River, 398 miles w. of Winnipeg, 420 miles e. of Calgary, div. pt. on C.P.R. (52 miles of trackage in yards), on G.T.P. and C.N.R. Hotels, Royal George, Empress, Cecil, City \$2.50 up, and 4 others. Churches of all denominations, 6 schools, collegiate institute, 2 business colleges, library, city hall, court house, Land Titles office, 3 parks, electric street ry. City owns light and water systems and sewerage with incinerator plant. Electric power at $1\frac{1}{4}$ c. to $1\frac{1}{2}$ c. per k.w. to manufacturers, $5\frac{1}{2}$ c. for domestic use. 2,000 h.p. available. Banks, 12 chartered, 1 private. 22 wholesale houses. Industries include sashes and doors (2), flour mills, (2) lumber cos. (2), autos and tractors, electric co., abattoir, faced bricks, pressed bricks, tiles and pottery, linseed, tents and mattresses, bridge and iron works, brushes and brooms. Centre of a rich wheat-growing district. Alt. 1,767. Pop. 29,800.

NOTE.—G.T.P. under construction to n.w. to connect with Biggar-Calgary line, 100 miles in operation.

SPECIAL OPPORTUNITIES.—Flax and flour mills, wholesale hardware, tractors, binder twine factory, farm machinery warehouse. Real estate investments. Cheap power. Other inducements on application. For free booklet write Sec. Bd. Trade.

†**MOOSOMIN**, inc. as town in 1889, on main line of C.P.R., 87 miles w. of Brandon. Hotel, Queen's \$2 up. 5 churches, Government creamery, 2 banks, public and normal schools, collegiate institute, school of music, centre of judicial district with resident judge. Port of customs, Land Titles office, general hospital, provincial gaol. District headquarters for R.N.W.M.P. and "A" Squadron 16th Light Horse. Centre of large mixed farming district. Pop. 1,400.

NOTE.—C.N.R. Maryland to Yorkton, via Moosomin, to be completed in 1914.

SPECIAL OPPORTUNITIES.—Steam laundry, brick and clay products, machine shop, flour mill, oatmeal mill, electric light plant. Improved lands near town for sale at \$10.00 to \$20.00. Write Sec. Bd. Trade.

MORSE, on C.P.R. main line, 71 miles w. of Moose Jaw. Hotels, Elkhorn, Royal \$2. 3 churches (Ang., Pres. Meth.), and Baptist service, public school, elec. light, 5 elevators (180,000 bushels), 2 banks, 4 lumber yards, 5 liverys, 2 motor garages, 2 machine shops, 7 general stores, 2 hardware, bakery, 2 doctors. A grain-growing and mixed farming district. Good prairie chicken, duck and deer hunting. Pop. 850, and large tributary pop. of English, Americans and Germans.

SPECIAL OPPORTUNITIES.—Flour mill, creamery, farming, market gardening. See under "Agric. Districts." Write Sec. Bd. Trade.

NOKOMIS, at junction G.T.P. main line and C.P.R. Winnipeg to Saskatoon br. Hotels, Nokomis, Dominion, Nokomis House \$2. 2 churches, 1 school, 4 elevators (65,000 bush.), 3 lumber yards, newspaper, 2 machine shops, 2 banks, 2 garages, flour mill. Pop. 500.

SPECIAL OPPORTUNITIES.—Creamery, drug store, stationer.

†**NORTH BATTLEFORD**, on C.N.R. main line, Winnipeg to Edmonton. Terminus of Prince Albert br. and Jack Fish Lake br., 254 miles e. of Edmonton, at junction of Saskatchewan and Battle Rivers. Div. point C.N.R. Long dist. telephone. Hotels, Auditorium \$2.50, Saskatchewan, Annex, Clarendon, Avenue, Metropole \$2 up. 5 churches and Salvation Army, public and separate

schools, \$150,000 collegiate institute, \$50,000 Govt. Bldg., armory, 5 banks, hospital (60 beds), elevator, flour mill (180 bbls.). Industries, sashes and doors, machine and engine works, aerated waters, bricks, cement blocks and sills (2), biscuits, stoneworks, creamery. City owns elec. light and power, water and sewerage systems and markets. Building permits 1913, \$859,195. Fine summer resort at Jack Fish Lake, 21 miles n., with numerous summer cottages. Pop. in 1911, 2,105; 1913 (Sworn Civic Census), 5,868.

SPECIAL OPPORTUNITIES.—Brewery, flour mill, linseed oil mill, packing plant, tannery, soap works, harness works, etc., distributing warehouses. See under "Agric. and Fruit Districts," and illus. Advt. For booklet and city map, write Commissioner Bd. Trade.

OUTLOOK, on e. bank of South Saskatchewan River, 12 miles n.w. of Moose Jaw; div. pt. on C.P.R. Minneapolis St. Paul-Moose Jaw-Edmonton direct line. Hotels Outlook, Avenue \$2.50. 3 churches and R.C. services. \$30,000 school. Municipal power house and fire hall with high pressure system, town hall, 20-acre park, 40-acre exhib. grounds with race track and covered grand stand. Town owns elec. light and water systems. Banks, 3 chartered, 1 private. 5 elevators (150,000 bush.), flour mill (150 bbls. per day), 2 auto repair shops, 3 lumber yards, 2 implement agents, 2 liverys, 3 general stores, several others, newspaper, moving picture theatre. Deposits of sand and gravel. A rich grain and mixed farming district. Beautiful scenery on Saskatchewan River, shooting, fishing, boating, bathing. Abundant pure water pumped direct from river. Pop. 1,000.

NOTE.—Contracts let for C.P.R. Outlook-Empress-Bassano branch. Norwegian Lutheran College under construction.

SPECIAL OPPORTUNITIES.—Wholesalers and jobbers in any line, brewery, oatmeal mill, flax mill, another flour mill, steam laundry, first-class restaurant, veterinary surgeon, general store. Inducements to manufacturers and wholesalers on application. See under "Agric. and Fruit Districts." Write Sec. Bd. Trade.

OXBOW, beautifully situated on a hill above the Souris River, on C.P.R., 41 miles from Estevan, 120 miles w. of Brandon. Hotel, Alexandra. 4 churches, public and high schools, 2 banks, 6 elevators (200,000 bush.), lumber yard, Govt. creamery, newspaper, restaurant, 2 livery stables and several stores. Alt. 1,895. Pop. 850.

NOTE.—Town expects to instal elec. light plant in 1915.

SPECIAL OPPORTUNITIES.—Flour and feed mill.

PERDUE, 42 miles w. of Saskatoon, 329 miles e. of Edmonton, 519 miles w. of Winnipeg. On C.P.R. Winnipeg-Edmonton line; G.T.P. main line at Leney, $1\frac{1}{4}$ miles distant. Hotel, Perdue \$2. 3 churches (Ang., Pres. Metl.), school, bank. Town hall, agric. fair grounds, race track, skating rink, 3 elevators, newspaper and printing office, 3 implement agents, 2 liverys, lumber yard, 3 general stores, 2 hardware, about 12 others. A rich grain-growing district, well suited to mixed farming. Chain of lakes 4 miles north affords good summer camping ground. Pop. 350.

SPECIAL OPPORTUNITIES.—Machine shop, creamery, cheese factory, tinsmith, dentist, veterinary surgeon, jeweller, boarding house. See under "Agric. and Fruit Districts." Write Sec. Bd. Trade.

†**PRINCE ALBERT**, on North Saskatchewan River (542 miles n.w. of Winnipeg via Dauphin, 605 miles via Regina, 80 miles n. of Saskatoon), on G.T.P. and on 4 branches of C.N.R., radiating n., s., e. and w. to Big River, Regina, Winnipeg and North Battleford. Freight and Passenger boat service on North Saskatchewan River to Edmonton. Hotels, Avenue, Empress, Windsor, Merchants, St. Regis, Prince Albert, Queen's, Saskatchewan, Royal, \$2.50 up. New R.C. Cathedral, Ang. Pro-Cathedral, 5 churches, 5 public schools, separate schools, collegiate institute, business college, ladies' college, convent, 2 hospitals, Govt. armory, labor temple. Permanent Land Show Building with triweekly public market. 9 banks. Municipally owned elec. light, water-works, sewerage system, elec. power. Industries include 3 large lumber companies (cut in 1912-13 approx. 100 million feet B.M.) new and up-to-date creamery, brewery, 5 brick yards, 3 flour mills, 2 cold storage plants, abattoir and packing plant, 3 planing mills, Roman stone, boat factory, saddlery works, culinary articles, extracts, etc., marble and granite works, 4 wholesale houses, theatre, 3 moving picture theatre, 1 d. and 2 w. newspapers. Centre of Judicial district, provincial jail and penitentiary, Dominion Lands Office, Customs Office for district. Headquarters of R.N.W.M.P. for Central and Northern Saskatchewan. Distribution centre for rich mixed-farming district, noted for stock raising. Abundant brick and pottery clay in immediate vicinity. 2,000 sq. miles of spruce and poplar extend northwards from city. A picturesque city occupying fine natural town-sites with



Breaking the Virgin Prairie.

boating, bathing, fishing, shooting, etc. Two large natural parks. Alt. 1,432. Pop. (Police Census, 1914), 13,500.

NOTE.—15,000 h.p. elec. power at La Colle Falls (26 miles), development half completed, temporarily suspended. Important discoveries of gold at Beaver Lake, 200 miles n.e., development under way.

SPECIAL OPPORTUNITIES.—Pulp and paper mills, furniture, box, woodenware, match, casket, beaver board and glass factories. Clay and ochre products, pottery ware, furriers, wood alcohol distillery, fish canning industry, cold storage plants, wholesale and distributing plants, abattoirs and packing plants. Poultry, cattle and dairy farming, market gardening, butter and cheese factories. See under "Agric. and Fruit Districts" and illus. Advt. Write for free pamphlet to Sec. Bd. Trade.

QU'APPELLE, on C.P.R. main line, 32 miles e. of Regina. Hotels, Corona, Queen's \$1.50 and \$2, 2 restaurants. 4 churches, public and high schools, 2 banks, 4 elevators (120,000 bush.), town hall, fire hall, court house, electric light plant, lumber yard, newspaper, 3 livery stables, 3 implement firms, 3 general stores. Town is surrounded by beautiful trees. Land here is rich clay loam, well adapted for mixed farming. Alt. 2,134. Pop. 850. Write Town Clerk.

†† REGINA, capital of Saskatchewan, on C.P.R., C.N.R. and G.T.P. G.N.R. have running rights into Regina over G.T.P. line. Saskatchewan divisional pt. on all railways, 12 lines radiating in all directions. Hotels, King's, Metropole (Eurp. \$1.50), Wascana, Empress, Alexandra, Clayton, Grand, Palmer, European, Victoria, Vons, Waverly, Kremlin and a temperance hotel. Parliament buildings, R.N.W.M.P. headquarters, 2 hospitals, 11 public schools, 4 separate, collegiate, normal school, Regina College, St. Chad's College. Industries, flour mill, sashes and doors, foundries, machine shops, brewery, soap, cement blocks, pressed bricks, elevators, wire and steel works, tanning, aerated waters, cigars. Central distributing point for farm implements and machinery, abattoir, petrified stone, mattresses. Elec. power at 1c. to 3c. per k.w.h., according to consumption. City owns stock yards, elec. light and water systems and street railway, all municipal franchises. Complete sewerage system. Well-paved streets. Large spaces reserved for parks. Principal distributing point for Middle West. Wholesale groceries, hardware, builders' supplies, etc.

Neighborhood supplies wheat, oats, flax, cattle, etc. Government controlled creamery. Alt. 1,885. Pop. 50,000.

NOTE.—\$1,000,000 G.T.P. hotel under construction.

SPECIAL OPPORTUNITIES.—Manufacture of felt hats, straw hats, oil lamps, furniture, shirts, collars, linseed oil, meal food, wholesale paint and glass, matches, buggies and wagons, paper boxes, biscuits, binder twine, vinegar, glue, cement tile pipe, boots and shoes, flour mill, tanneries. City owns large number of lots in the wholesale and warehouse district, with spur tracks on 3 railways, to be sold to new industries at minimum value. See under "Agric. and Fruit Districts" and illus. Advt. Write Publicity Commissioner, Bd. Trade, Regina, Sask.

ROSETOWN, on C.N.R. (Goose Lake br. Cal. & Sask. line), and C.P.R. (Moose Jaw-Edmonton line), 72 miles s.w. of Saskatoon. Local and long dist. telephones. Hotels, Albion \$2.50, Rosetown \$2. 4 churches (Ang., Pres., Meth., R.C.), public and high schools, municipal hospital, 6 elevators (140,000 bush.), flax decorticating mill, machine shop, elec. light, 3 banks, newspaper, 4 lumber yards, 3 livery, 1 garage, 2 oil distributing warehouses, feed mill, photographer, 6 implement warehouses, skating rink, theatre, gasoline fire engine and pump. A good grain country, flax predominating. Pop. 1,200.

SPECIAL OPPORTUNITIES.—Flour mill, linseed oil mill, cement block works, dentist, furniture store, packing plant, wholesale distributing house. Write Sec. Bd. Trade.

ROSTHERN, on C.N.R. Win., Regina, Prince Albert line, 50 miles n. of Saskatoon. Hotels, Queen's, Grange. 8 churches, 2 schools, opera house, court house, 2 banks, brick yards 2 flour mills, Government telephone plant, gas plant, 5 elevators, Government Experimental Farm. Pop. 1,300.

SPECIAL OPPORTUNITIES.—A foundry. Write Sec. Bd. Trade.

ROULEAU, on C.P.R., 32 miles s.e. of Moose Jaw. Hotel, Arlington. 4 churches (Ang., Pres., Meth., R.C.), 1 public school, 5 elevators (237,000 bush.), telephone, 2 banks, 2 lumber yards, newspaper, 3 livery stables, 2 restaurants, machine shop, oil storage tanks, municipal waterworks and electric light plant. Lawyer, dentist, 2 doctors, 2 private hospitals. Pop. 900.

SPECIAL OPPORTUNITIES.—Flour mill, oatmeal mill. Write Sec. Bd. Trade.

SALTCOATS, on Saltcoats Lake, on C.P.R. Winnipeg-Edmonton br. line, 17 miles s.e. of Yorkton. Hotel. 3 churches, public and high schools, 2 banks, 3 grain elevators, 1 grist mill, cement block works, 2 lumber yards, 3 livery stables, 1 garage, 1 restaurant, local and long dist. telephone, municipal elec. light works. Agric. Soc. holds annual fair. Skating rink, town band. Alt. 1,714. Pop. 700.

SPECIAL OPPORTUNITIES.—Milliner, creamery, packing factory, sash and door factory, brick yard (clay deposits $\frac{1}{2}$ -mile distant), photographer, lawyer. Write for free illus. booklet to Sec. Bd. Trade.

¶ **SASKATOON**, on S. Saskatchewan River, on C.P.R., C.N.R. and G.T.P., 160 miles n. of Regina, 90 miles s. of Prince Albert, 335 miles e. of Edmonton, 466 miles w. of Winnipeg. Central geographical position gives absolute freight rate control of 48,000 sq. miles of distributing territory, embracing over 200 points on 1,836 m. of railway. 13 good hotels, 17 churches, 11 large public schools, 4 of which cost \$156,000 each. Collegiate institute, court house, opera house, 6 moving picture theatres, customs house, Dom. Lands office, Land Titles office, 2 hospitals, 16 banks. Industries, Quaker Oats sole western plant (1,000 bbls. daily), brewery, tractors, garments, woodwork plants (3), interior woodwork, brick plants (3), cement blocks, tents and mattresses, cigars (2), aerated waters, metal shingles and sidings, machine shops and foundries (2), nursery, etc. Over 200 wholesale houses. City owns elec. light and power, street ry., water and sewerage systems. Govt. automatic telephone. Seat of Provincial University, Agricultural College and Experimental Farm. Over \$2,000,000 already expended on buildings. Increase in number of students necessitated spending \$300,000 in 1914. 15 miles of street ry. 437 acres city parks. 90 miles sewer and water mains. Unlimited supply of purest water. Modern filtration plant. 2 daily papers, 2 weekly. Lowest fire insurance rates in Saskatchewan. 4 bridges cross river in city. Pop. 113 in 1903. In 1914, about 30,000.

NOTE.—New \$450,000 bridge, new school and Dom. Govt. interior elevator now under construction, first unit costing \$2,000,000.

SPECIAL OPPORTUNITIES.—Packing and cold storage, flour and cereal mills, tannery, manufacture of soap, shoes, harness, biscuits, shirts, skirts and clothing, paints, automobiles, linseed mills, agric. implement assembling plants. Jobbing houses in all lines. Market gardening and poul-

try farming. Extremely cheap steam generated elec. power. See under "Agric. and Fruit Districts." Write Commissioner, Bd. Trade.

SCOTT, 103 miles w. of Saskatoon, 224 miles e. of Edmonton, 569 miles w. of Winnipeg, on C.T.P. main line. Hotels, Gladys, Queen's \$2. 3 churches (Ang., R.C., Pres.), \$16,000 public school. Judicial centre. Town hall, Dom. Govt. Experimental Farm (560 acres), municipal hospital (40 beds), fire department, race track. Town owns elec. light and water systems. 2 banks, newspaper. 3 elevators (90,000 bushels), machine shop, 2 lumber yards, chopping mill, 3 implement firms, 2 liverys, 2 auto liverys, restaurant, 1 wholesale oil distributing plant. Abundant gravel and sand. A grain-growing district with mixed farming on the increase. Good shooting. Pop. 600.

SPECIAL OPPORTUNITIES.—Flax and tow mill, oatmeal mill, cement block plant, cheese factory. See under "Agric. and Fruit Districts." Write Sec. Bd. Trade.

SHANAVON, 224 miles w. of Weyburn. Div. point on C.P.R. Weyburn-Lethbridge branch. Hotels, Kennedy, Empress. 5 churches, school, 3 banks, 9 lumber yards, steam laundry, 5 restaurants, 7 general stores. A wheat-growing and ranching country. Pop. about 1,200. Write Sec. Bd. Trade.

SHELLBROOK, 2 miles from Shell River, 28 miles w. of Prince Albert, junction pt. on C.N.R. Prince Albert-North Battleford and Shell Brook-Big River lines. Hotels, Shellbrook, Windsor \$1.50. 3 churches (Ang., Pres., R.C.), public school, town hall, fire station, recreation park, bank. Dom. Lands office, 3 elevators (100,000 bush.), creamery, flour mill, newspaper, restaurant, 7 implement agents, 2 restaurants, lumber yard, 3 liverys, 4 general stores, about 10 others. Neighborhood supplies large quantities of lumber. Brick clay, oil, sand and gravel are available. Pop. 527.

SPECIAL OPPORTUNITIES.—Brick yard, packing plant, oatmeal mill, pulp mill, tannery, veterinary surgeon, doctor, dentist, motor garage and repair shop. Write Sec. Bd. Trade.

SINTALUTA, on main line of C.P.R., 53 miles e. of Regina. Hotel, Saskatchewan \$1.50. 3 churches, public school, 2 banks, 5 elevators, telephone, lumber yard, planing mill. 3 stores, 3 implement firms, 2 blacksmiths, confectioner. Pop. 500.

SPECIAL OPPORTUNITIES.—Newspaper, veterinary surgeon. Write Sec.-Treas. of Town.

STOUGHTON, on C.P.R. Arcola-Regina and Stoughton V. barn brs., 86 miles s.e. of Regina. Hotels, King Edward \$2, Stoughton \$1.50. 2 churches, 4-room school, town and fire hall, 5 elevators (175,000 bush.), 2 lumber yards, 2 liverys, bank, newspaper, 3 hardware, 2 general stores. Good wheat districts. Pop. 500.

SPECIAL OPPORTUNITIES.—Grist mill, creamery, dentist. Farm lands at reasonable prices. Write Mgr. Bank of Ottawa.

STRASSBURG, on C.P.R., in the heart of Last Mountain Valley, 55 miles n.w. of Regina. Hotels, Strassburg, Last Mountain. 4 churches, 1 brick school, 3 elevators (93,000 bush.), 3 lumber yards, newspaper, 3 livery stables, several stores. Pop. 811.

SUTHERLAND, on South Saskatchewan River, 3 miles from Saskatoon, on C.P.R. Street ry. to Saskatoon. Hotels, Shore, Empress, \$2. 3 churches, 8-roomed brick school, town hall, bank. Water and sewerage systems. Dom. Govt. forestry farm. University of Saskatchewan adjoins town on the west. Largest C.P.R. div. pt. between Winnipeg and Edmonton, and headquarters for District 2 of Saskatchewan Division. Monthly pay-roll \$40,000 in shops, yards and roundhouse. Football, baseball, tennis, curling and hockey clubs. Pop. 1,200.

SPECIAL OPPORTUNITIES.—Strawboard factories, brick yard. Deposits of clay and gravel at hand. Wholesale houses. Write Sec. Bd. Trade.

SWIFT CURRENT, incorporated as a city, Jan., 1914, on Swift Current Creek and C.P.R. main line, div. pt., 153 miles w. of Regina. Govt. telephone. Hotels, Healey (Eur.), Carlton (Eur.), Empress \$2.50 up. Alexandra, Imperial. 5 churches, high and 3 public schools, 8 banks. Municipality owns waterworks, sewerage, hospital, and elec. light. Land Titles and judicial district offices, customs house, Dom. Lands office, 4 theatres, 7 elevators, 7 lumber yards, 18 wholesale houses, steam laundry, 1 weekly and 1 semi-weekly newspaper, 6 livery stables, cement products factory, aerated water factory, planing mill, creamery, curling, ice and roller skating rinks (3), race track, fire hall, tennis courts, 200-barrel flour mill. Good farming section. Distributing centre for 3,000 sq. miles. Assessment, 1910, \$1,672,380; 1913, \$11,993,489. Building permits, 1913, \$1,019,158; Customs receipts, 1913, \$1,847,507. Alt. 2,423. Pop. (Civic Census, Nov., 1913), 5,765.

NOTE.—C.P.R. branches to n.e. and s.e. under construction. C.N.R. and G.T.P. expected shortly.

WAD

THERE ARE EXCELLENT OPPORTUNITIES FOR THE BUSY MAN AT



Wadena has first-class hotels, schools, churches, etc.

WADENA DISTRICT WANTS MORE GOOD FARMERS—Wadena District shipped in 1913: 329 cars (9,870 tons) of grain, 199 cars (value \$180,000) of live stock. Wadena needs more good farmers in its district of 2,500 square miles. Present price of land, \$8 to \$25 an acre. Ideal conditions exist for all who are experienced in grain-growing, hog-raising, dairying and sheep-farming. Dairying finds an outlet for produce through the Co-operative Creamery (one of 14 in the Province), managed by the Provincial Government. A market for wool has been established in the Province. Natural hay is available in large quantities, over the whole district. Poplar wood close to town, and spruce, tamarac and pine farther north, are available in enormous quantities for fuel, building and fencing. Grain yields, under careful farming, have been uniformly high in even the most unfavorable seasons. Corn, cucumbers, tomatoes and all other garden produce can be grown in abundance.

NO DEPRESSION AT WADENA—The Town of Wadena, notwithstanding the unfavourable trade conditions which have affected the world during the past year, has increased its population 15 per cent. during that period. A first-class modern hotel and a large school of permanent construction have been built during the year to meet the demands of the public. An additional branch bank has also been opened.

A GOOD TOWN TO LIVE IN—The population of Wadena town and county the plant being municipally owned. All business and professional facilities its head-quarters in town. Military training is provided by Rifle As

Read description of Wadena and District, on pages 60 and 68.

SECRETARY-TREASURER.

WADENA

OFFERS IDEAL LOCATION FOR THE
FARMER OR STOCK RAISER



At Fishing Lake, 45 minutes by motor from Wadena, where sailing, motor-boating fishing and bathing are enjoyed by Wadena citizens.

WADENA WANTS MORE BUSY MEN—A great opportunity exists for a Land Company, with good connections and selling machinery, to purchase comparatively cheaply land along the line of the Thunder Hills branch of the Canadian Northern Railway. Openings for: Meat packing plant, tannery, brickyard, oatmeal mill, cement block plant and, above all, a cold storage warehouse. Substantial assistance can be obtained by the bona fide builder and operator of the latter; no similar enterprise exists within 100 miles, and every such plant in the Province has done well.

A PARADISE FOR SPORTSMEN—All sports are catered for by a Citizens' Association. The Wadena Country Club has established a Camp at Fishing Lake (3 miles from the next station East, and 45 minutes motor drive from town), where sailing, motor-boating, rowing and fishing are indulged in under ideal conditions of natural beauty and facilities. Wild ducks, partridges, geese, prairie chickens, turkeys are so plentiful as to be sometimes a pest to farmers. Moose, elk, deer, as well as bears, are numerous in the less settled parts of the district, as are also muskrats (musquash), lynx, otter, wolves, fox, marten, ermine and other fur-bearing animals.

is almost entirely English-speaking. The town is lighted by electricity, and many other facilities exist. A detachment of the Royal North-West Mounted Police has a station here. Telephone, local, rural, and long-distance in general use.

Write for further detailed information to

WADENA, SASKATCHEWAN

SPECIAL OPPORTUNITIES.—Wholesale grocery, brick yard, sash and door factory, foundry and machine shop, storage and warehouse, sheet metal works, flourmill, mattress factory, business college, stationery and book store, market gardening, stone mason. Town owns 40 acres industrial sites, offered to manufacturers at cost. Liberal inducements to new industries. Elec. power, 10c. per k.w. hour. See under "Agric. and Fruit Districts." Write Sec. Bd. Trade.

VANGUARD, on C.P.R., 40 miles s.e. of Swift Current. Hotel, Vanguard \$2.50. 3 churches, school, hospital, fire hall, bank, 12 stores. Rich grain-growing district, 1,500,000 bush. shipped in 1913. Pop. 600.

SPECIAL OPPORTUNITIES.—Flour mill, flax mill. Write Sec. Bd. Trade.

VONDA, on C.N.R. main line, 35 miles e. of Saskatoon. Hotels, Vonda, Alexandra \$2 to \$2.50. 3 churches, public and separate schools, bank, R.N.W.M.P., Agric. Society, 4 elevators, 2 lumber yards, cold storage plant, 2 livery motor livery, I.O.O.F. and C.O.F. Societies, chopping mill, restaurant, 4 general stores, 2 hardware, 6 others. A grain-growing and fine mixed farming district. Pop. 438 (local census).

SPECIAL OPPORTUNITIES.—Flour and feed store, creamery. See under "Agric. and Fruit Districts." Write Sec. Bd. Trade.

†WADENA, on C.N.R. main line, 139 miles e. of Saskatoon, 366 miles n.w. of Winnipeg. Local, long dist. and rural telephones. Hotels, Diner \$2, \$2.50, Wadena \$1.00 up. 3 churches (Swed.-Bapt., Ang. and Meth.), R.C. and Lutheran services, \$30,000 high and public school, 2 banks. Sub-agency Dom. Lands Govt., immigration hall, newspaper, R.N.W.M.P., 3 elevators, flour mill (30 bbls.), grist mill, foundry and machine shop, Govt. creamery, laundry, 2 lumber yards, 2 livery, motor livery, 2 wood-working shops, theatre and moving pictures, oil distributing warehouses, 3 restaurants. Town owns elec. light and power plant. Mixed farming district. Large stockyards. Annual fair at agric. fair grounds, 30 acres. Fishing Lake (12 miles), provides good bathing, boating, fishing and camping. Excellent goosé, duck and chicken shooting; moose, deer, bear, 40 miles north. 6 lakes within 40-mile radius. Neighborhood supplies gravel and clay. Pop. (Town Census, Aug., 1914), 763.

NOTE.—C.P.R. Sheho-Prince Albert br., graded 2 miles from town.

SPECIAL OPPORTUNITIES.—Clay bricks, cement blocks, sash and door factory. Inducements offered by town. See under "Agricultural Districts" and illus. Advt. Write for free pamphlet to Sec. Bd. Trade.

WAPELLA, on C.P.R. main line, 110 miles e. of Regina. Hotel, Commercial \$1.50. 4 churches (Ang., Pres., R.C., Meth.), public school, bank, 6 elevators (178,000 bush.), telephone, lumber yard, newspaper, 3 livery stables. Alt. 1,930. Pop. *485.

SPECIAL OPPORTUNITIES.—Flour mill, pork packing (building erected but vacant), tannery, sash and door factory, jeweller, lawyer, dentist. Write Pres. Bd. Trade.

WATROUS, div. pt., on G.T.P., 60 miles e. of Saskatoon. Hotels, Tourist, Manitou \$2 to \$3. 5 churches, \$35,000 school, 2 banks, 3 elevators, elec. light co., machine shop, dump rock co. Manitou Lake 3 miles distant, 14 miles by $\frac{3}{4}$, is becoming known as a tourist and health resort. Pop. 1,500.

NOTE.—Water and sewerage systems to be completed in 1914.

SPECIAL OPPORTUNITIES.—Flour mill, laundry, lawyer, private bank. Free sites offered to new industries. Write Sec. Bd. Trade.

WEYBURN, on Souris River and main Soo line, on C.P.R. Winnipeg to Lethbridge br. and G.T.P. to Regina, 315 miles w. of Winnipeg, 125 miles s. of Regina. C.P.R. div. pt. Hotels, Royal, Waverley, Soo \$2. 6 churches, 4 public schools, collegiate, 2 hospitals, 6 banks, cement works, flour mill (150 hbbs. per day), 6 elevators (210,000 bush.), creamery, sash, door and glass factory, bottling works, foundry, machine, brick and tile factory, municipal elec. light and power plant, 20 wholesale distributors, 2 newspapers, customs house, good wheat market, water and sewerage systems. Commercial Club. Dom. Lands Office. A judicial centre, with resident judge. Court house under construction. H.O. Weyburn Security Bank. Alt. 1,847. Pop. (Sworn Census, June, 1913), 5,378.

NOTE.—C.N.R. branch to Weyburn from the south, under construction. C.P.R. Weyburn to Stirling will be completed by end 1914. Write Industrial Commissioner.

WHITEWOOD, on C.P.R. Broadview Section, 250 miles w. of Winnipeg. Hotels, Woodbine \$1.50, Armstrong \$2. 4 churches, 1 school, 1 bank, 4 elevators (103,000 bush.), telephone, lumber yard, newspaper, 2 livery stables, 4 general stores, 3 implement warehouses, \$7,000 curling and skating rink, fishing at Round Lake, 16 miles.

A grain-growing and mixed farming district. Alt. 1,966. Pop. *447.

SPECIAL OPPORTUNITIES.—Flour and feed mills, brick plant (brick clay a few miles north), newspaper, shoemaker, jeweller, tailor. Write Sec.-Treas. Town of Whitewood.

WILKIE, on C.P.R., div. point on Winnipeg-Edmonton line, and 3 branches in operation. 100 miles w. of Saskatoon, 267 miles s.e. of Edmonton. Hotels, Empire, Wilkie, \$2.00. 3 churches, public and high school, hospital 2 banks, Volunteer fire brigade, Agric. Society and exhibition grounds, sub-agency Dom. Lands office, Govt. immigration hall, R.N.W.M.P. barracks. Town band, choral society, tennis and gun clubs, skating and curling rinks. Town owns elec. light and water systems. Elevator capacity, including flag stations, 223,682 bush. 3 lumber yards, machine shop, flour mill, (50 bbls.), 2 livery stables, garage, w. newspaper. Bathing and sailing at Coldspring Lake (7 miles). A rich farming district. Pop. 1,556.

SPECIAL OPPORTUNITIES.—Biscuit factory, creamery, brick and cement plants, steam laundry, wholesalers, flax mill. For free illustrated booklet, write Sec. Bd. Trade.

WOLSELEY, on C.P.R. Moose Jaw Section, 62 miles e. of Regina. A divisional point of Wolesley-Reston branch. Hotels, Empire, Leland \$2. 6 churches, convent, public school, electric light and power company. 7 elevators (186,000 bush.), 3 banks, laundry, telephone. The C.P.R. have a nursery here of 115 acres. Alt. 1,950. Pop. *961.

SPECIAL OPPORTUNITIES.—Flour mill, dairy, creamery, brick yard. Write Sec. Bd. Trade.

WYNYARD, near Big Quill Lake, 3½ miles. Div. pt. on C.P.R. Hotels, Queen's, Wayne. 4 churches (Ang., Pres., Lutheran 2), public school, 3 elevators, 3 implement houses, 3 liveries, 1 auto livery, weekly newspaper, 11 stores.

SPECIAL OPPORTUNITIES.—Brick yard, dentist, veterinary-surgeon. Write Sec. Bd. Trade.

YELLOW GRASS, 70 miles s.e. of Moose Jaw, on C.P.R. Hotels, Maple Leaf (licensed), Victoria (unlicensed). 4 churches (Ang., Pres., Bapt., Meth.), R.C. and Lutheran services, public and high schools, town hall, police barracks park, 2 banks. Town owns water system and electric plant. 2 liveries, 3 auto liveries, 3 general stores, 5 implement dealers. Pop. about 700.

SPECIAL OPPORTUNITIES.—Flour mill, packing plant, creamery, horse exchange, moving picture theatre, brick yard. Write Town Clerk.

YORKTON, on C.P.R., C.N.R. and G.T.P. Ry. (Hudson Bay br.), 130 miles n.e. of Regina, 280 miles w. of Winnipeg. Hotels, Balmoral \$2 to \$3, Yorkton \$2.50. 9 churches, 3 public schools, \$75,000 high school, Dom. Lands office, court house, Lands Titles office, hospital, R.N.W.M.P. barracks, 2 brick yards, flour mill, oatmeal mill, 8 elevators (240,000 bush.), planing mill, 5 lumber yards, 2 machine shops, aerated water works, garage, 2 newspapers, cement block works, steam laundry, marble works, 7 implement cos. Municipally owned electric light plant, waterworks, sewerage, fire hall. Judicial centre of N.E. Sask. Govt. local and long dist. telephones. Rainfall 20.51 in. Summer resort at York Lake, 4½ miles. Good shooting. Pop. 5,217.

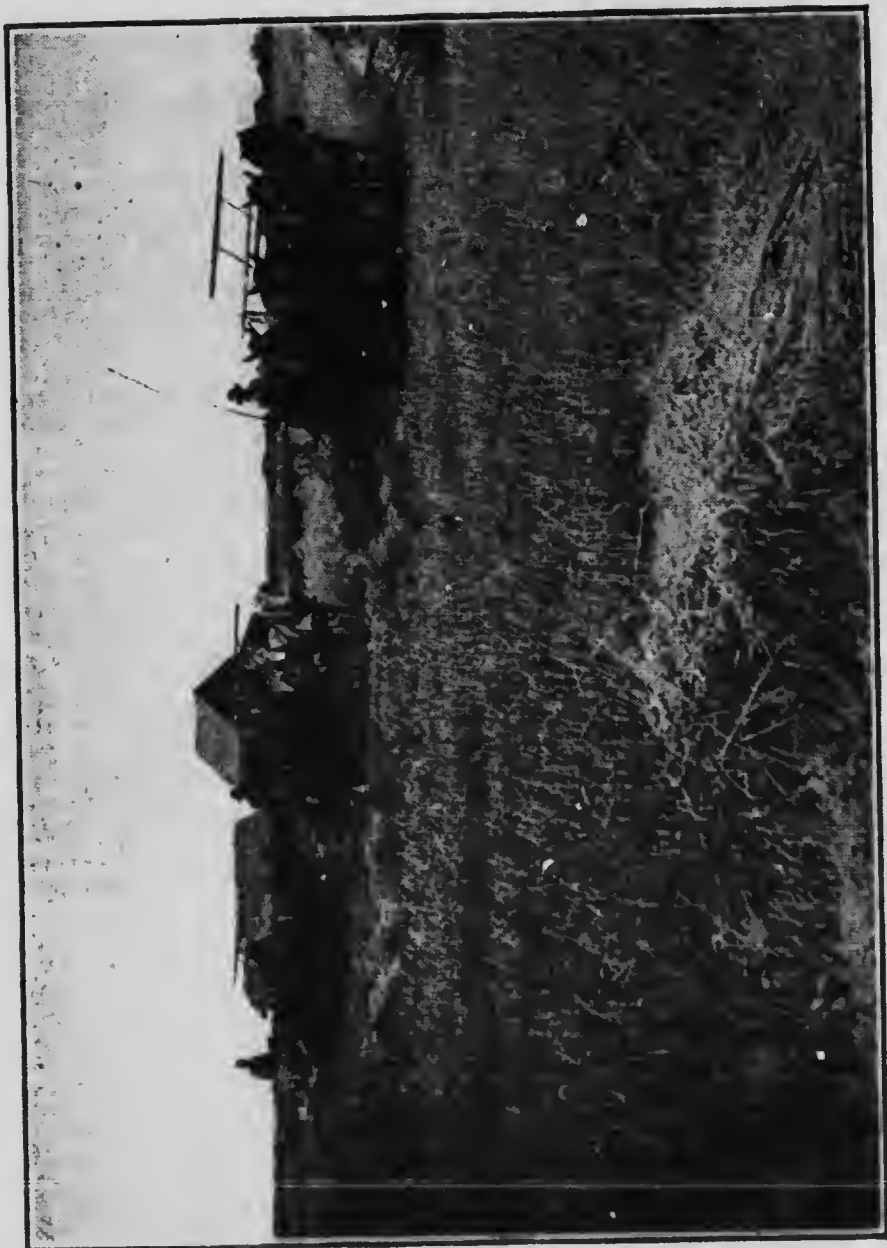
NOTE.—New fire hall, municipal skating rink, and municipal power house (1,150 h.p.) under construction.

SPECIAL OPPORTUNITIES. — Wholesale distributing houses, strawboard factory, pottery plant. Liberal inducements to new industries. Building dwellings for sale or rent from \$2,000 to \$5,000 each. See under "Announcements." Write for free booklet to Sec. Bd. Trade.

YOUNG, on G.T.P. main line and Pr. Albert br., and C.P.R. Regina-Saskatoon br. 43 miles s.e. of Saskatoon, 110 miles s. of Pr. Albert, 117 miles n.w. of Regina. Hotel, Manitou \$1.50 to \$2. 2 restaurants. 2 churches (R.C., Pres.), public school, bank, town hall, fire hall, 3 elevators, 2 lumber yards, lime co. (1,000 bush. per day), 2 liverys, newspaper, 3 general and 6 other stores. Little Manitou Lake (3 miles) has genuine medicinal properties and is a popular summer resort. Pop. 300.

SPECIAL OPPORTUNITIES.—Flour mill, aerated waterworks, broom factory, linseed oil mills, agric. implement and repair works, brick yard (heavy clay deposits 2 miles distant), milliner, furniture store, lawyer, jeweller, photographer. See under "Agric. and Fruit Districts." Write for free pamphlet to Sec. Bd. Trade.

ZEALANDIA, in Goose Lake District, 60 miles s.w. of Saskatoon, on C.N.R. Saskatoon-Calgary line. 1 hotel. 2 churches (Ang., Pres.), school, 1 newspaper, 4 grain elevators (160,000 bushels), 2 banks, usual stores, a sub-office for Dominion Lands, Excellent farming district. Pop. 550.



Harvesting a Bumper Crop in the Asquith District—Read announcement headed
"Saskatchewan Lands—W. C. L. Pratt's Agency," on page 72.

Agricultural Districts

This chapter contains descriptions of some of the leading districts to which immigration is attracted. Illustrations will be found scattered through the Booklet.

SASKATCHEWAN. The province is divided naturally into:

NORTHERN SASKATCHEWAN. Heavily wooded beyond Tp. 63, and has scarcely been explored yet. The Hudson Bay traders and a few trappers and prospectors, form almost the entire white population.

SOUTHERN SASKATCHEWAN. South of Tp. 63, and extending to the International Boundary line, are the great prairie lands which have made Saskatchewan so well known as an agricultural province. This area contains 86,826,240 acres. In 1914 there were only 8,820,700 acres under the four leading crops, although a careful estimate shows that at least 57,884,160 acres of arable lands lie within the boundaries of this district. The country is centrally divided by the Saskatchewan River (navigable), and includes undulating prairies, with lakes and ponds, rolling prairie with bluffs of poplar and high rolling country, partly heavily timbered with spruce and pine. Soil and climate are peculiarly adapted to cultivation of wheat.

ARCOLA DISTRICT. Land is slightly rolling and very well drained. Soil, rich black loam, 18 in. deep, on clay subsoil. Well watered by Moose Mountain River and numerous smaller streams. Abundant pure water at 15 to 25 ft. A grain-growing district, with large tracts of well-watered open prairie, making good grazing land. Good opening for mixed farming and dairying. District won two second prizes in stallion classes at International Live Stock Show, Chicago, 1913. Some hogs and cattle raised. Grain and fodder crops do well. Served by C.P.R. Arcola br. and C.N.R. Maryfield br. Market at Arcola. Stock shipped to Winnipeg. Average crops per acre: Wheat, 25 bushels; oats, 60; barley, 35; flax, 15. Pop. about 3,000, all English speaking. Fine scenery in mountains to north. Shooting and fishing. No homesteads available. Average price per acre of raw lands, \$20 to \$30; improved farms, \$25 to \$45. See under Descriptions of Towns. Write Sec. Bd. Trade, Arcola, Sask.

ASQUITH DISTRICT. Land is slightly rolling. High and well drained throughout. Soil, black loam, 15 in. deep, on clay subsoil. Watered by Eagle Creek, with Saskat-

AGRICULTURAL DISTRICTS

chewan River on north boundary. Abundant pure water at 12 to 30 ft. A grain-growing and dairying district, with increasing mixed farming and horse breeding. Crop failures unknown. Market at Asquith, and great demand for dairy produce at Saskatoon, 25 miles e. Quaker Oats mill and terminal elevators (capacity 15 million bushels) at Saskatoon, will be completed to handle 1914 crop, affording great market for oats, etc. Served by C.P.R. Edmonton line and G.T.P. main line. Pop. 3,500, including Canadians, English and Americans. Average crops per acre: Wheat, 25 bushels; oats, 60; barley, 45. No homesteads available. Average price per acre of raw lands, \$25; improved farms, \$25 to \$35. See under "Announcements." See under Descriptions of Towns. Write W. C. L. Pratt, Notary Public, Asquith, Sask.

ASSINIBOIA DISTRICT. Comprises a large tract of rolling land. Soil, clay loam, about 2 ft. deep, on clay subsoil. Watered by numerous small lakes. Wells average 40 ft. A grain-growing district, with mixed farming on the increase. Principal crops and products: Grain, hogs and cattle. Served by C.P.R. Market at Assiniboia. Average crops per acre: Wheat, 25 bushels; oats, 65; flax, 12. Large deposits of coal and fire clay. Pop. about 10,000, largely Canadian, American and British. 2,000 people settled in this district in 1912. No homesteads available. H.B. Co. have all the available raw land for sale at \$25 per acre. C.P.R. have lands for sale. Average price per acre of improved farms, \$30. See under Descriptions of Towns. Write Sec. Bd. Trade, Assiniboia, Sask.

BATTLEFORD DISTRICT. Comprises a large area of undulating land. Soil, sandy loam, 18 ins. deep, with clay subsoil. Drained by Battle and Saskatchewan Rivers. Wells average from 10 to 35 ft. in depth. Essentially a mixed farming and dairying district. Leading crops and products: Cattle, grain, horses, swine. Average crops per acre, 1914: Wheat, 22 bushels; oats, 35; barley, 45. Good markets and transportation facilities for all farm products. Average price of raw lands per acre, \$7 to \$15; improved farms, \$10 to \$25. Large area still available for settlement. No homesteads. Wood is plentiful in district. Coal is obtained from Edmonton and Pennsylvania. Undeveloped water power in Battle River. Beautiful scenery along both rivers. Pop. of district includes Canadians, English, Americans and French Canadians. See under Descriptions of Towns. Write for free literature to Sec. Bd. Trade, Battleford, Sask.

CANORA DISTRICT. Area about 50 miles e. and w. by 90 miles n. and s. Northern part is rolling, with some timber. To e. and w. of Canora are level, fertile plains. Soil, black loam, 18 ins. to 2 ft. deep, with clay subsoil. Abundant water at 15 to 40 ft. Good local market at Canora. Well served by C.N.R. and G.T.P. A grain-growing, mixed farming and dairying country. Vegetables do well. Wheat averages 25 bushels; oats, 70; barley, 30; flax, up to 20. Pop. includes Canadians, British, Americans, Germans, Doukhobors, Austrians and Russians. 30 to 40 townships available for homesteads, about 40 to 70 miles n. on projected railway lines. Canora Live Stock Co., Ltd., assists responsible farmers in district by advancing money to purchase stock. Price per acre of raw lands, \$10 to \$15; improved farms, \$20 to \$30. Wood costs about \$4 a cord. Soft coal, \$7; hard, \$12. See under Descriptions of Towns. Write Sec.-Treas., Bd. Trade, Canora, Sask.

CARNDUFF DISTRICT. Land is level prairie, watered by Souris River and numerous creeks. Soil varies from clay loam to sandy loam, easily worked, on deep clay subsoil. Abundant pure water at 15 to 30 ft. Good shipping facilities by C.N.R., G.T.P. and 3 branches of C.P.R. Other lines projected. Low freight rates to Eastern markets. A grain-growing and mixed farming district, producing wheat, flax, and coarse grains, horses, cattle, hogs and poultry. Corn and alfalfa are grown successfully. Mr. John Plews, of Carnduff, won the prize for the best peck of flax shown at the International Dry-Farming Congress, Tulsa, Oklahoma, in 1913. Climate is good and free from early frosts. Abundant fuel obtainable from the Estevan coalfields 50 miles w. of Carnduff. Price of land varies from \$20 to \$50 per acre, according to location and improvements. See under Descriptions of Towns. Write Sec. Bd. Trade, Carnduff, Sask.

CARROT RIVER VALLEY. Area about 90 by 30 miles. Served by the C.N. Ry. Land mostly level; in parts rolling or hilly, well watered. Wood plentiful. Admirably adapted for mixed farming or grain growing. Soil is rich black loam several feet deep. All kinds of crops are successfully grown. To the east is a large wooded district containing valuable timber. North of Melfort, on the direct line of the railway being constructed to the Hudson Bay, a number of homesteads are available. The North Saskatchewan Land Co., Ltd., Winnipeg, own nearly 70,000 acres in this valley.

DELMAS DISTRICT. Land is rolling, with sandy loam 3 feet deep, clay subsoil, watered by lakes and rivers. Wells average about 26 ft. deep. Mixed farming is carried on. Leading crops: Wheat, oats and barley. Served by C.N.R. Good market at Battleford. In local districts wood is obtainable for fuel. Good water power. Fine scenery. Countr. well wooded with poplar bluffs. Average price of raw lands per acre, \$15 to \$20; improved farms, \$20 up. Pop. 400, mostly French and English.

ESTEVAN DISTRICT. Area about 5,000 sq. miles. Land is slightly rolling, high and dry. Some sandy soil near rivers to s. of town. The rest is black and clay loam, 2 feet deep, on clay subsoil. Watered by the Souris River and Long Creek. Wells, 30 to 150 feet. Served by four lines of C.P.R.; C.N.R. under construction, and G.T.P. have charter. Good local markets provided by mines and brick yards. A grain-growing country, with some mixed farming. Wheat averages 20 bush.; oats, 50; barley, 40; flax, 15. Neighborhood supplies unlimited lignite coal and clay for brick and pottery. Banks of rivers well wooded. Pop. about 15,000, including Canadians, Americans, English, Scandinavians, French and Germans. Immigration in 1912 estimated at 500. No homesteads available. Average price per acre of raw lands, \$25; improved farms, from \$30. See under Descriptions of Towns. Write Commissioner Bd. Trade, Estevan, Sask.

HERBERT DISTRICT. Tributary area about 1,700 sq. miles. Land is partly level, partly rolling prairie, drained by creeks running into South Saskatchewan River. Soil, rich chocolate loam, 12 to 24 inches deep, on clay subsoil. Numerous springs and small lakes. Wells from 10 to 150 ft. A grain-growing country, well suited to mixed farming. Principal crops: Wheat, oats, flax, barley and potatoes. Considerable stock raising along the south Saskatchewan River. Storage elevator and flax mill at Moose Jaw; 6 elevators and flour mill at Herbert. Served by C.P.R., transcontinental line, double-tracked east and west. Roads are being improved every year. Average crops per acre: Wheat, 18 bushels; oats, 50; barley, 30; flax, 15. Pop. 7,000, including English, Germans, Swedes and Norwegians. Homesteads available at some distance from railway. Hudson Bay Co. have lands for sale. Average price per acre of raw lands, \$20 to \$25; improved farms, \$25 to \$35. See under Descriptions of Towns. Write Sec. Bd. Trade, Herbert, Sask.

HUMBOLDT DISTRICT. Area about 18,000 sq. miles; 85% arable; only 15% under cultivation. Land is slightly

rolling, with some small lakes and creeks. Soil, black loam, 8 to 24 inches, with clay subsoil. Pure water plentiful at 20 to 80 ft. Mixed farming, grain growing, dairying and stock raising prevail. Estimated grain shipments in 1913 over 2,800,000 bush. Local market at Humboldt; C.N.R. main line provides shipping facilities for other markets. Pop. 30,000 to 50,000, including Canadians, Americans, Scotch, English, Irish and American Germans. Humboldt butter won highest awards in open competition at Winnipeg Fair, 1912. 2,300 free homesteads available. Price per acre of raw lands, \$12 to \$40; improved farms, \$15 to \$50. See under Descriptions of Towns. Write Commissioner, Bd. Trade, Humboldt, Sask.

INDIAN HEAD DISTRICT. Comprises about 23,100 acres. Land is slightly rolling. Soil, black loam, with clay subsoil. Wells from 10 to 15 ft. deep. Leading products are wheat and oats. District was first settled by Ontario farmers. English and Scotch are represented. Traversed by C.P.R. Price of lands per acre: Unimproved, \$15 to \$25; improved, \$40 to \$60. The Dominion Government Experimental Farm here covers one sq. mile, and Forestry Farm 320 acres. See under Descriptions of Towns. Write Sec. Bd. Trade, Indian Head, Sask.

JACK FISH LAKE DISTRICT. On C.N.R. line from N. Battleford to Athabasca Landing, embracing Bright Lake, Turtle Lake, Turtle River Valley and Lac de la Biche. An open rolling country, well watered, adapted for mixed farming. The low altitude and long day tend to eliminate danger from frost; general average yield for oats is 70 bush. Many settlers have secured 30 bushels of wheat per acre. Write Land Department, C.N. Ry., Winnipeg, Man.

KAMSACK DISTRICT. Land is fairly level. A few small hills to north, where country is well wooded. Soil, black loam, 18 inches deep, on clay subsoil. Well watered throughout; irrigation unnecessary. Wells 15 to 20 ft. A mixed farming district, with some grain growing. Large numbers of hogs and cattle raised, and some poultry. Served by C.N.R. main line. Markets at Kamsack (3 elevators) and other points along railway. Average crops per acre: Wheat, 22 bushels; oats, 75; barley, 35; flax, 20. Abundant water power could be developed from Assiniboine River. Extensive deposits of brick clay sand and gravel. Pop. includes English, Americans, Canadians, Russians and Germans. Homesteads available to north within 15 miles of Kamsack. Average price per acre of



A Garden at Melfort. See descriptions of Melfort and Melfort District, on pages 35 and 62, and announcement headed "Melfort District—Sidney Smart," on page 71

raw lands, \$18 to \$20; improved farms, \$19 to \$30. See under Descriptions of Towns. Write Sec. Bd. Trade, Kamloops, Sask.

KERROBERT DISTRICT. Land is flat to e. and w., gently rolling to n. and s. Well drained throughout with occasional small sloughs. Soil, chocolate loam, 2 to 18 inches deep, on clay subsoil. Well watered, no irrigation needed. Wells average 50 ft. A grain-growing district, with mixed farming on the increase. Hogs raised profitably. Market at Kerrobert. Served by C.P.R. Minneapolis-Edmonton direct line, Moose Jaw-Lacombe and Kerrobert-Cutknife br. via Wilkie. Average crops per acre: Wheat, 15 to 30 bushels; oats, 65; barley, 35; flax, 18. Pop. 3,500, including Canadians, Americans, British, Germans and Russians. A few horses available 30 miles from Kerrobert. C.P.R. has land for sale. Average price per acre of raw land, \$19 to \$20; improved farms, \$22 to \$40. See under Descriptions of Towns. Write Sec. Bd. Trade, Kerrobert, Sask.

KINDERSLEY DISTRICT. Land slightly rolling. Soil chocolate clay loam, 24 ins. in depth, with clay subsoil. Wells 40 to 100 ft. deep for domestic and farm purposes. Principal occupation, grain growing. Stock raising is carried on in southern parts of district. Served by C.N.R. Price of raw lands per acre, \$10; improved farms, \$30 up. Coal is procured at Lethbridge. Settlers chiefly British, American and some Germans. See under Descriptions of Towns. Write Sec. Bd. Trade, Kindersley, Sask.

LANIGAN DISTRICT. Land slightly rolling and open, dry prairie. Soil, black loam, about 12 ins. deep, with clay subsoil, watered by natural rainfall. Wells 20 ft. Mixed farming is engaged in almost entirely. Traversed by C.P.R. Pheasant Hill Branch and Winnipeg-Edmonton line. Leading crops with average bushels per acre are: Wheat, 25; oats, 50; flax, 10 to 15; barley, flax (in small quantities) and vegetables are grown. Good markets for dairy produce and eggs at Saskatoon. Local markets for garden truck. Immigrants chiefly American, some British and Eastern Canadians, a few Germans. Average price per acre of raw lands, \$15; improved farms, \$20 up. See under Descriptions of Towns. Write to Sec. Bd. Trade, Lanigan, Sask.

LLOYDMINSTER DISTRICT. Rolling in parts, partially wooded. Nearer Lloydminster are large level tracts of clear land. Essentially a stock-raising country, watered by Saskatchewan and Battle Rivers. Soil, rich black loam.

6 to 18 inches in depth, with clay subsoil. Watered by 2 rivers and lakes. Served by C.N.R. Govt. creamery at Lloydminster, and large packing plant at Edmonton, furnish markets for dairy and stock farmers. In past 3 years district took over 40 prizes for grain exhibits at Edmonton, Regina, Calgary and Brandon fairs. \$1,500 silver trophy for oats, open to the world, given by Colorado, was won twice running by same farmer, 6 miles from Lloydminster. Local Poultry Assn. handles all farmers' eggs and poultry at best city prices. Plenty of homesteads still available. See under Descriptions of Towns. Write Publicity Commissioner, Lloydminster, Sask.

MACKLIN DISTRICT. Area about 500 sq. miles. Land is slightly rolling, high and well drained. Soil, chocolate loam, 1 to 3 ft. deep, with clay subsoil. District is traversed throughout by a creek and chain of lakes, two of which are of considerable size, with good boating. Wells average 30 ft. A grain-growing country with parts admirably adapted to mixed farming and dairying. Served by C.P.R. Winnipeg-Edmonton main line and St. Paul-Edmonton line. Hogs, cattle and sheep shipped to Edmonton, Moose Jaw and Saskatoon markets; dairy produce to Edmonton. Average crops per acre: Wheat, 25 bushels; oats, 45; barley, 35; flax, 12. Country is wooded to north, with good chicken, duck and goose shooting. Pop. between 3,000 and 4,000, chiefly British, some Germans. No homesteads available. Average price per acre of raw lands, \$17; improved farms, \$19 to \$22. See under Descriptions of Towns. Write Chairman Publicity Committee, Bd. of Trade, Macklin, Sask.

MELFORT DISTRICT. Comprises an area of about 4,000 sq. miles. The land is generally flat and rolling with no hills; mostly dry, with very little scrub. Soil, black loam, average depth 2 ft., with clay subsoil. Watered by Carrot River. Stony Creek and smaller rivers and streams throughout. Wells average 15 ft. Abundance of pure water. Mixed farming predominates and is largely on the increase; considerable grain growing and dairying. Leading crops and products: Oats, wheat, barley, hay, hogs, cattle, horses, sheep and poultry. Markets at Melfort, Star City, Tisdale, Kinistino and Birch Hills. All butter shipped to B.C. Some homestead lands available within 30 miles of Melfort. Served by C.N.R. Prince Albert branch, several other lines under construction and chartered. Average crops per acre: Wheat, 25 bushels; oats, 65; barley, 40. Population of district includes Canadians, Americans and

English. Nearly all English speaking. Average price of raw lands per acre, \$12 to \$20; improved farms, \$20 to \$50, according to location of railways. See under Descriptions of Towns. See below under "Announcements." Write Sec. Bd. Trade, Melfort, Sask.

MELVILLE DISTRICT. Area 40 miles square. Land is rolling, dotted with small poplar groves. Soil, black loam, with clay subsoil, well watered. Wells 18 to 48 ft. deep; mixed farming and grain growing. Traversed 4 ways by G.T.P. Ry. Germans, British, Norwegians, Swedes and Americans represented. Wood for fuel obtained in Beaver Hills. Average price per acre of raw lands, \$14 to \$25; improved farms, \$25 to \$35. See under Descriptions of Towns. Write Sec. Bd. Trade, Melville, Sask.

MEOTA DISTRICT. Land is rolling, partially covered with small poplar bluffs, easily cleared. Soil, heavy to sandy loam, 12 to 18 inches deep, on clay subsoil. Wells from 10 to 40 ft. A grain-growing and mixed farming district, producing wheat, oats, barley and a little flax, which thrives very well; cattle horses, and hogs. Served by C.N.R. Markets at Edmonton, Saskatoon and Winnipeg. Average crops per acre: Wheat, 25 bushels; oats, 35; barley, 40. Pop. includes Americans, British and French. Fine scenery. Average price per acre of raw lands, \$10; improved farms, \$20 to \$30. See under Descriptions of Towns. Write Sec. Bd. Trade, Meota, Sask.

MOOSE JAW DISTRICT. A splendid agricultural section noted for the uniformly good average yields and quality of its crops. Flour and flax mills and abattoir are established at Moose Jaw. Headquarters of the C.P.R. for Saskatchewan. The bulk of the homesteading in Saskatchewan takes place at the Dominion Lands office at Moose Jaw. In this district an additional 160 acres can be purchased by each homesteader as a "purchased homestead," or as "pre-emption." See under Description of Towns.

MORSE DISTRICT. Land is rolling to north, flat to south. Soil, chocolate loam, 12 inches deep, on clay subsoil. Watered by creeks and sloughs. Wells average 100 ft. A grain-growing district with mixed farming on the increase. Horses, cattle and hogs raised. Grain and stock shipped to Winnipeg; local markets for dairy and garden produce. Served by C.P.R. main line. Marquis wheat grown in Morse District won first prize

at Saskatoon and Regina Provincial Exhibitions in 1912. Pop., 15,000, including English-speaking races and Germans. C.P.R. and Hudson Bay Co. have land for sale. Average price per acre of raw lands, \$15; improved farms, \$20 to \$30. See under Descriptions of Towns. Write Sec. Bd. Trade, Morse, Sask.

NORTH BATTLEFORD DISTRICT. Comprising 30,000 sq. miles of rolling land, lightly dotted with poplar bluffs. Soil, black loam, 6 to 30 inches in depth, with clay subsoil. Well adapted to stock raising, mixed farming and grain growing. The country is well watered by lakes and streams. Leading crops and products are: Wheat, oats, barley, flax, alfalfa, vegetables, cattle, horses, hogs and sheep. Served by C.N.R., main line and branches. Markets, local and foreign. C.P.R. has opened local branch office of their Natural Resources Dept. for settlement of their farming lands in District, on 20-year payments. "Farm Land Exchange" has been organized. City owns market, free for use of farmers. There are thousands of acres of good cheap land and numerous homesteads available for settlement. The country is partly wooded, affording fuel for domestic purposes. Pop. of district about 45,000, chiefly Canadians, English, American and German. See under Descriptions of Towns. Write Commissioner, Bd. Trade, North Battleford, Sask.

OUTLOOK DISTRICT. Land is high and well drained; level except in extreme s.w., which is gently rolling. No hills. Soil, chocolate loam 18 inches deep, on clay subsoil. Watered by South Saskatchewan River. Wells 20 to 25 ft. A grain-growing district with mixed farming on the increase and some dairying. Hogs and some cattle and horses are raised. Small fruits and garden vegetables thrive. Local markets at Outlook, Broderick and Conquest. Hogs shipped to Moose Jaw and Winnipeg. Served by C.P.R. Minneapolis-Edmonton direct line. Average crops per acre: Wheat, 25 bushels; oats, 50; barley, 50; flax, 12. Water power can be developed from South Saskatchewan River. Beautiful scenery in river valley. Pop. about 10,000, Canadians and Americans. Immigration in 1913, about 35 families. No homesteads available. C.P.R. have lands for sale. Average price per acre of raw lands (very little obtainable), \$30; improved farms, \$25 to \$45. See under Descriptions of Towns. Write Sec. Bd. Trade, Outlook, Sask.

PARK BELT. North of the Yorkton branch of the C.P.R. and the main line of the C.N.R. lies a semi-wooded district known as the Park Belt, at present largely used for grazing. See under Yorkton District.

PERDUE DISTRICT. Land is slightly rolling; high and well drained. Soil, dark chocolate loam, 10 to 19 inches deep, on clay subsoil. Watered by a chain of lakes and several small creeks. Wells 9 to 80 ft. A grain-growing district, well adapted to mixed farming. Markets at Perdue and Leney. Served by C.P.R. Winnipeg-Edmonton line and G.T.P. main line. Average crops per acre: Wheat, 25 bushels; oats, 65 to 70 bushels; flax, 15 to 20 bushels. Pop. 2,500, all English-speaking, including English, Canadians and Americans. A few homesteads available about 10 miles from Perdue. Average price per acre of raw lands, \$20 to \$45; improved farms, \$25 to \$45. See below under "Announcements." See under Descriptions of Towns. Write H. J. Reid, Sec. Bd. Trade, Perdue, Sask.

PRINCE ALBERT DISTRICT. Comprises an area of 5,000 sq. miles of rolling, park-like country, interspersed with occasional hay sloughs. Well watered by Saskatchewan River and numerous smaller rivers, lakes and streams. Soil, black loam with clay subsoil, particularly well adapted for mixed farming. A mixed farming district with considerable grain growing, market gardening and dairying. Unlimited openings for extension of vegetable and fruit growing and dairying. All vegetables and bush fruits, particularly raspberries and strawberries, mature perfectly. Tri-weekly public market at Prince Albert assures quick sales, good prices and cash dealings for fruit, dairy and vegetable produce. Lumber camps during winter afford excellent market for all farm produce. Abundance of pure water. Wells average 11 ft. Leading crops and produce: Wheat, oats, potatoes, some flax and barley, cattle, horses, hogs and sheep. Stock shipped principally to Prince Albert abattoir and Winnipeg. Average crops per acre (exact returns covering 5 years 1909-1913): Wheat, 22 bushels; oats, 45; barley, 30; flax, 14; potatoes, 221. Served by C.N.R. (4 branches) and G.T.P. Good market in Prince Albert for all farm products. Average price of raw lands per acre, \$15 to \$20; improved farms \$20 to \$35. Several thousand homesteads are available, 2,263 homestead entries in 1912, 2,141 in 1913. Lumber camps assure employment for homesteaders during winter. Abundant

PRINCE ALBERT SASK.

CENTRE OF THE MIXED FARMING AREA



The Prince Albert District in 1914 was able to make an offer to the Government to winter 10,000 head of cattle from distressed districts of the province. Prince Albert District has never experienced a crop failure. 6000 good homesteads open. Improved lands at reasonable prices. Read descriptions of Prince Albert and the surrounding district, on pages 41 and 65

Write for full particulars to

SECRETARY, BOARD OF TRADE, PRINCE ALBERT, SASK.

wood for fuel easily obtainable throughout district. Pop. about 25,000 including Canadians, English, French, Galicians and Americans. District has offered to winter 10,000 head of stock in 1914, for distressed districts to the south. See under Descriptions of Towns. Write Sec. Bd. Trade, Prince Albert, Sask.

NOTE.—Exhibits of wheat won World's Championship at Columbus, Ohio National Fair in 1911. District won first prize at Canada Land and Apple Show at Winnipeg in 1913, for finest exhibit of grains and grasses. Seed grain has won numerous prizes at Western Canadian exhibitions.

QU'APPELLE VALLEY. Extends 10 miles north and south of Qu'Appelle. The valley is about 300 ft. deep. The soil generally is sandy loam, watered by Qu'Appelle River. Wells 18 ft. deep in the valley; 30 ft. on the hills. A mixed farming district. The C.P.R. runs 18 miles south and 7 miles to north of valley and the G.T.P. Ry. through the valley. Average crops: Wheat, 30 bushels; oats, 50; barley, 40; flax, 18. Price per acre of raw lands, \$20; improved farms, \$30 to \$40. Practically no homestead lands. Write to Sec. Bd. Trade, Qu'Appelle, Sask.

QUILL LAKE DISTRICT. An area 90 miles long by 75 miles wide, traversed by C.N.R. between Kuroki and Humboldt; a heavy rainfall, deep rich black soil with clay subsoil. A comparatively mild climate owing to low elevation. A very fine quality of wheat is grown. The wild grass and wild pea vine grow luxuriantly. Write Land Department C.N.R., Winnipeg, Man.

REGINA DISTRICT. District tributary to Regina extends from 50 to 100 miles in each direction. Land is almost all of highest quality and has produced as much as 45 bushels of wheat to the acre in 1913. Regina is supplied with water from Wascana Creek, n. of the city, which never goes dry. District is also watered by Saskatchewan and Qu'Appelle Rivers. Last Mountain Lake and the Qu'Appelle Valley Lakes are popular summer resorts. Overflowing wells can be obtained by boring from 15 to 30 ft. in many places. Grain growing, garden truck farming and dairying are carried on. Government controlled creamery output 1913. District is served by C.P.R., C.N.R. and G.T.P.; G.N.R. have running rights over G.T.P. Regina-Boundary line. Average crops per acre. Wheat, 25 bushels; oats, 65; flax, 15. Vegetables yield heavy crops. Pop. of district, 85,000. See below under

"Announcements." See under Descriptions of Towns. Write Commissioner Bd. Trade, or Publicity Commissioner, Regina, Sask.

NOTE.—District won 2nd prize in 2 yr. old stallion class at the International Live Stock Show, Chicago, 1913.

SASKATOON DISTRICT. Saskatoon City has absolute freight rate control of an area extending to over 48,000 sq. miles, embracing upwards of 200 thriving points on 2,225 miles of operating railways. Chief crops: Wheat, oats, barley and flax. Stock raising and mixed farming are exceptionally profitable, and these lines are expanding very rapidly. Splendid opening for truck gardeners. Roots, alfalfa, and all tame fodders raised to great advantage. Dom. Govt. elevator (3,250,000 bush.) is at Saskatoon. Lots of splendid land available at moderate prices and on easy terms. See below under "Announcements." See under Descriptions of Towns. Write Commissioner, Bd. Trade, Saskatoon, Sask.

SCOTT DISTRICT. Land is level or gently rolling; high and well drained. Soil, chocolate loam, 6 ins. deep, on clay subsoil. Abundant pure water obtainable at 25 to 100 ft. A grain-growing district, with mixed farming increasing steadily. Good opening for ranchers. Hogs and cattle raised profitable. Market at Scott. Served by G.T.P. main line. Average crops per acre: Wheat, 15 to 30 bushels; oats, 40 to 70; barley, 20 to 40; flax, 10 to 17; Pop. 3,000, including Germans, Russians, Americans, Canadians, English and Scotch. Average price per acre of raw lands, \$10 to \$20; improved farms, \$20 to \$35. See under Descriptions of Towns. Write Sec. Bd. Trade, Scott, Sask.

SWIFT CURRENT DISTRICT. Comprises 3,000 sq. miles of prairie land, slightly rolling, with all classes of loam, very deep, and clay subsoil, watered by Swift Current Creek. Traversed by C.P.R., G.T.P. and C.N.R. building. Good wells at 16 to 30 ft. Average crops, 1912: Wheat, 21 bushels; oats, 50 bushels. Pop. 15,000, including Canadians, Americans, English and Scotch. Price per acre of raw lands, \$20; improved farms, \$35. See under Descriptions of Towns. Write Sec. Bd. Trade, Swift Current, Sask.

NOTE.—Wheat from this district took 1st prize at Dominion Fair, Regina, 1911 and 1912, and this district took World's Prize for best all-round district exhibit at Int. Dry Farming Congress, Tulsa, Oklahoma, Nov., 1913.

WADENA DISTRICT. Area about 650 sq. miles, with flat prairie land to south, rolling park land to north. Soil

is black loam, 12 to 18 inches deep, with clay subsoil. Wells, 10 to 24 ft. deep. Many lakes, creeks and ponds throughout district. Good annual rainfall. A mixed-farming country to north; grain growing and mixed farming to south. Chief crops and products are cattle, pigs, poultry, wheat, oats, barley, flax, alfalfa, vegetables. Small fruits, like gooseberries, currants, strawberries, etc., do exceptionally well. District took 1st prize for oats and dairy butter at Winnipeg Exhibition. Government creamery at Wadena pays highest prices for cream. Large stock yards for local cattle market. Heavy local and neighboring demand for vegetables. District served by C.N.R. main line. Shipments made from Wadena in 1913: Grain, 260,000 bushels; hogs, 3,200; cattle, 2,250 head. Average price of raw lands per acre, \$15 to \$30; improved farms, \$20 to \$40. Numerous homesteads available to the north, some on projected C.N.R. Thunder Hill branch. C.N.R. holds lands for sale. New settlers, 1913-14, numbered 400. Pop. of district 3,000, chiefly Canadians, British, Americans and Scandinavians. See under Descriptions of Towns. Write Sec. Bd. Trade, Wadena, Sask.

WEYBURN DISTRICT. An area 90 miles by 170, of rich heavy soil, eminently adapted to the raising of hard wheat. Land in great demand, and average crop yield up to the highest standard for province. Country is rolling prairie, well watered and in some parts wooded. Served by several lines of the C.P.R., C.N.R. and G.T.P. Average yield in 1912: Wheat, 21 bushels; oats, 42; flax, 15; barley, 30. Large crops of roots and alfalfa grown. Pop. of district 50,000, comprising American and German settlers, with British races in majority. Farm lands, \$30 per acre up; wild land, \$20. See under Descriptions of Towns. Write Industrial Commissioner, Weyburn, Sask.

WILKIE DISTRICT. Comprises some 60 townships. Land is slightly rolling with stretches of level prairie. No bush. Prairie trails in all directions afford good travelling for nine months of the year. Soil, dark chocolate loam, 12 to 18 inches deep, with clay subsoil. Wells, 15 to 60 ft. deep. Market at Wilkie and good shipping facilities by 5 radiating lines of C.P.R. A grain country, with increasing mixed farming and dairying. Principal crops and products, grain, hogs, cattle and dairy produce. Wheat yields from 15 to 30 bushels per acre; oats, 45 to 85; barley, 30 to 50; flax, 12 to 20. Pop., not including towns, 3,000; comprising Canadians, British and Americans. Average price per acre of raw lands, \$15 to \$25; improved farms, \$23 to \$35. See under Descriptions of Towns. Write Sec. Bd. Trade, Wilkie, Sask.



This Farm near Ierdue, Saskatchewan, yielded an Average of Over 30 Bushels of Wheat to the Acre.
See announcement headed "Perdue District—H. J. Reid," on page 71

Announcements concerning lands will be accepted only from responsible firms of recognized standing, personally known to the Editors. The Editors reserve the right to edit mailer received. For descriptions of districts referred to in the headings of these Announcements, see above.

NOTE—The Saskatchewan Government assumes no responsibility in connection with these announcements.

CANADIAN PACIFIC RAILWAY LANDS—In 1898 the wheat crop of Saskatchewan was 4,780,440 bushels. Year by year this has increased, and the crop of 1913 stood at one hundred and eight million bushels: Thousands of the farmers who have contributed to this magnificent result raised their wheat on lands purchased from the Canadian Pacific Railway Company, which still has several million acres for sale on easy terms, and at prices ranging from \$11 to \$30 per acre. For full information, maps, literature and price address J. S. Dennis, Assistant to the President, Dept. of Natural Resources, C. P.R., Calgary, Alta.

HUDSON BAY CO. LANDS—The Hudson Bay Co. received 1/20 of all the land south of the North Saskatchewan River when in 1868 they transferred their interest in the Canadian Northwest to the Dominion Government. Their land consists of Section 8 and three-quarters of Section 26 in each Township. Write to Land Commissioner, Hudson Bay Co., Winnipeg, Man.

MELFORT DISTRICT—SIDNEY SMART. The prices of raw lands in this famous farming district runs from \$12 to \$25 per acre. Improved farms average \$40 per acre. To the intending settler this is an investment worth considering. In Melfort District conditions are ideal for mixed farming, grain growing or dairying. Live stock thrive, and dairy products find a ready market. Railway service is already good and rapidly becoming better. Write for information about land which will yield an average of 28 bushels of wheat, 60 bushels of oats or 35 bushels of barley to the acre. Sidney Smart, Melfort, Sask.

PERDUE DISTRICT—H. J. REID. I have some of the best grain-growing and mixed-farming land in Central Saskatchewan, both raw and improved, at very reasonable prices and terms. near Perdue, Arctee, Normanton, Kinley, Leney, Wheatfields, Crocusvale, Stoneroyd, and Sonningdale. Prices \$18 to \$45 per acre, rising rapidly. I handle investments in first-class mortgages on unquestionable security. Correspondence answered promptly. H. J. Reid, Perdue, Sask.

REGINA DISTRICT—ANDERSON, LUNNEY & Co We have been in business in Regina the past twelve years, and have made a careful study of real estate, both for settlers and outside investors. Our years of experience are at the disposal of our clients and we will be glad to answer questions and furnish information regarding investments. Descriptive booklet of Saskatchewan and Regina sent free on application. Anderson, Lunney & Co., Regina, Sask.

SASKATCHEWAN LANDS—W. C. L. PRATT'S AGENCY. We have a large list, which we should like to send you, of farm property for sale, all located west of Saskatoon, thickly settled with very progressive English-speaking people. Their location, fertility, abundance of good water and progressive settlement, will make these lands as valuable as any in the province. Railways: C.P.R., G.T.P., C.N.R. Splendid opening for horse, cattle, hog and poultry raising. 8% per ann. guaranteed on money for investment with us. Mortgages, loans, agreements of sale. W. C. L. Pratt's Agency, Farm Land and Investment Brokers, Asquith, Sask.

SASKATOON DISTRICT—C. L. TANNER LAND CO., LTD. We own and control 65,000 acres of the most fertile land in the Goose Lake, Carrot River and Rosthern Districts tributary to Saskatoon and well served by railways. Soil is chocolate loam of great depth and very rich in nitrogen, phosphorus and humus. Wheat, flax and oats, yield heavier crops here than in any of the well-known wheat-growing States. Luxuriant growth of alfalfa and fodder grasses makes stock-raising easy and profitable. Write us for full information, prices and illustrated pamphlet. C. L. Tanner Land Co., Ltd., Saskatoon, Sask. References, The Can. Bank of Commerce and Royal Bank of Canada.

YORKTON DISTRICT—BRADBROOKE BROS. We have for sale improved and wild lands in the Yorkton District at \$15 to \$40 per acre, on easy terms, to suit purchasers. This district has never had a crop failure. Wheat, 15 to 30 bushels per acre; oats 50 to 100. Write for particulars and booklet "A" (well illustrated, mailed free) to Bradbrooke Bros., Yorkton, Sask.

Union Bank of Canada

Established 1865

Head Office, Winnipeg

PAID-UP CAPITAL,	\$ 5,000,000
TOTAL ASSETS, OVER	\$85,000,000

BRANCHES IN SASKATCHEWAN

Abbey	Gull Lake	Moose Jaw	Sintaluta
Adanac	Herbert	Moosomin	Southey
Alsask	Hughton	Morse	Strassburg
Arcola	Humboldt	Netherhill	Swift Current
Asquith	Indian Head	Neudorf	Tessier
Assiniboia	Jansen	Ogema	Theodore
Bounty	Kelfield	Outlook	Togo
Buchanan	Kerrobert	Oxbow	Tompkins
Cabri	Kindersley	Pense	Vanguard
Canora	Landis	Perdue	Verigin
Carlyle	Lang	Piapot	Viceroy
Craik	Langigan	Plenty	Vidora
Cupar	Lawson	Prince Albert	Wapella
Cut Knife	Lemberg	Qu'Appelle	Watrous
Dinsmore	Loverna	Regina	Wawota
Dummer	Lumsden	Robsart	Webb
Eastend	Luseland	Rocanville	Weyburn
Esterhazy	Macklin	Rosetown	Wilkie
Estevan	Macrorie	Saskatoon	Windthorst
Eye brow	Maple Creek	Sceptre	Wolseley
Fillmore	Maryfield	Scott	Yorkton
Gravelbourg	Melfort	Shaunavon	Zealandia
Guernsey	Milestone	Simpson	

LONDON, ENG., OFFICE

6 Princes Street, E.C.

West End Branch: Haymarket, S.W.

Managers of the above branches will be pleased to answer enquiries regarding Saskatchewan.

The London Offices transact every kind of banking business with Canada.

Superintendent of Saskatchewan Branches,

J. S. HIAM, Winnipeg.

