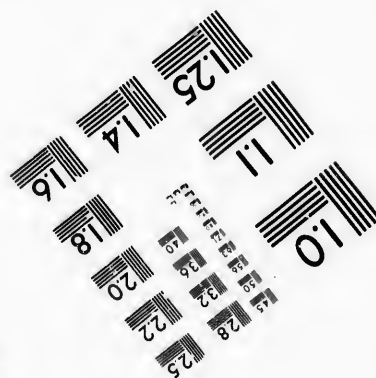
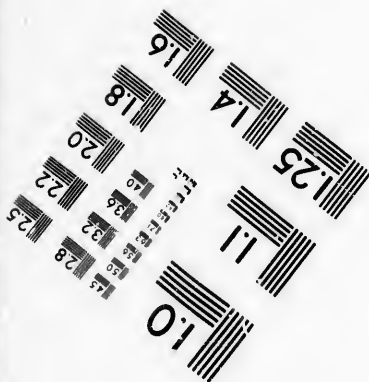
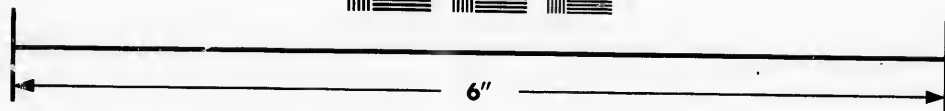
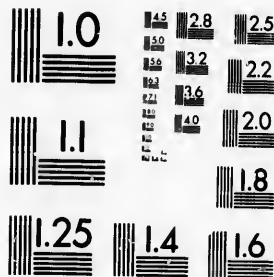


**IMAGE EVALUATION
TEST TARGET (MT-3)**



**Photographic
Sciences
Corporation**

23 WEST MAIN STREET
WEBSTER, N.Y. 14580
(716) 872-4503



**CIHM/ICMH
Microfiche
Series.**

**CIHM/ICMH
Collection de
microfiches.**



Canadian Institute for Historical Microreproductions / Institut canadien de microreproductions historiques



© 1986

Technical and Bibliographic Notes/Notes techniques et bibliographiques

The Institute has attempted to obtain the best original copy available for filming. Features of this copy which may be bibliographically unique, which may alter any of the images in the reproduction, or which may significantly change the usual method of filming, are checked below.

L'Institut a microfilmé le meilleur exemplaire qu'il lui a été possible de se procurer. Les détails de cet exemplaire qui sont peut-être uniques du point de vue bibliographique, qui peuvent modifier une image reproduite, ou qui peuvent exiger une modification dans la méthode normale de filmage sont indiqués ci-dessous.

- | | |
|--|--|
| <input type="checkbox"/> Coloured covers/
Couverture de couleur | <input type="checkbox"/> Coloured pages/
Pages de couleur |
| <input type="checkbox"/> Covers damaged/
Couverture endommagée | <input type="checkbox"/> Pages damaged/
Pages endommagées |
| <input type="checkbox"/> Covers restored and/or laminated/
Couverture restaurée et/ou pelliculée | <input type="checkbox"/> Pages restored and/or laminated/
Pages restaurées et/ou pelliculées |
| <input type="checkbox"/> Cover title missing/
Le titre de couverture manque | <input checked="" type="checkbox"/> Pages discoloured, stained or foxed/
Pages décolorées, tachetées ou piquées |
| <input type="checkbox"/> Coloured maps/
Cartes géographiques en couleur | <input type="checkbox"/> Pages detached/
Pages détachées |
| <input type="checkbox"/> Coloured ink (i.e. other than blue or black)/
Encre de couleur (i.e. autre que bleue ou noire) | <input checked="" type="checkbox"/> Showthrough/
Transparence |
| <input type="checkbox"/> Coloured plates and/or illustrations/
Planches et/ou illustrations en couleur | <input type="checkbox"/> Quality of print varies/
Qualité inégale de l'impression |
| <input type="checkbox"/> Bound with other material/
Relié avec d'autres documents | <input type="checkbox"/> Includes supplementary material/
Comprend du matériel supplémentaire |
| <input type="checkbox"/> Tight binding may cause shadows or distortion
along interior margin/
La reliure serrée peut causer de l'ombre ou de la
distorsion le long de la marge intérieure | <input type="checkbox"/> Only edition available/
Seule édition disponible |
| <input type="checkbox"/> Blank leaves added during restoration may
appear within the text. Whenever possible, these
have been omitted from filming/
Il se peut que certaines pages blanches ajoutées
lors d'une restauration apparaissent dans le texte,
mais, lorsque cela était possible, ces pages n'ont
pas été filmées. | <input type="checkbox"/> Pages wholly or partially obscured by errata
slips, tissues, etc., have been refilmed to
ensure the best possible image/
Les pages totalement ou partiellement
obscurcies par un feuillet d'errata, une pelure,
etc., ont été filmées à nouveau de façon à
obtenir la meilleure image possible. |
| <input checked="" type="checkbox"/> Additional comments: / [Printed ephemera] 1 sheet (verso blank)
Commentaires supplémentaires: | |

This item is filmed at the reduction ratio checked below/
Ce document est filmé au taux de réduction indiqué ci-dessous.

10X	12X	14X	16X	18X	20X	22X	24X	26X	28X	30X	32X
								✓			

The copy filmed here has been reproduced thanks to the generosity of:

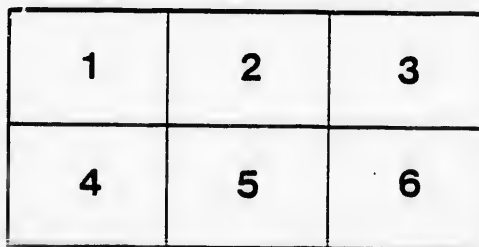
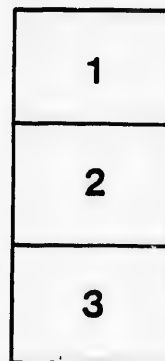
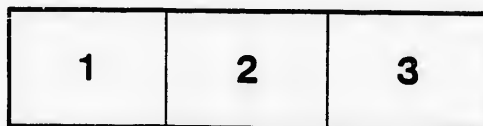
Manuscript Division
Public Archives of Canada

The images appearing here are the best quality possible considering the condition and legibility of the original copy and in keeping with the filming contract specifications.

Original copies in printed paper covers are filmed beginning with the front cover and ending on the last page with a printed or illustrated impression, or the back cover when appropriate. All other original copies are filmed beginning on the first page with a printed or illustrated impression, and ending on the last page with a printed or illustrated impression.

The last recorded frame on each microfiche shall contain the symbol \rightarrow (meaning "CONTINUED"), or the symbol ∇ (meaning "END"), whichever applies.

Maps, plates, charts, etc., may be filmed at different reduction ratios. Those too large to be entirely included in one exposure are filmed beginning in the upper left hand corner, left to right and top to bottom, as many frames as required. The following diagrams illustrate the method:



L'exemplaire filmé fut reproduit grâce à la générosité de:

Division des manuscrits
Archives publiques du Canada

Les images suivantes ont été reproduites avec le plus grand soin, compte tenu de la condition et de la netteté de l'exemplaire filmé, et en conformité avec les conditions du contrat de filmage.

Les exemplaires originaux dont la couverture en papier est imprimée sont filmés en commençant par le premier plat et en terminant soit par la dernière page qui comporte une empreinte d'impression ou d'illustration, soit par le second plat, selon le cas. Tous les autres exemplaires originaux sont filmés en commençant par la première page qui comporte une empreinte d'impression ou d'illustration et en terminant par la dernière page qui comporte une telle empreinte.

Un des symboles suivants apparaîtra sur la dernière image de chaque microfiche, selon le cas: le symbole \rightarrow signifie "A SUIVRE", le symbole ∇ signifie "FIN".

Les cartes, planches, tableaux, etc., peuvent être filmés à des taux de réduction différents. Lorsque le document est trop grand pour être reproduit en un seul cliché, il est filmé à partir de l'angle supérieur gauche, de gauche à droite, et de haut en bas, en prenant le nombre d'images nécessaire. Les diagrammes suivants illustrent la méthode.

rata
o

elure,
à

32X

V. PROCLAMATION



ELECTORAL DIVISION
OF NEWCASTLE,
TO WIT:

the year of our Lord one thousand eight hundred and sixty-three

Public Notice is hereby given
the Electoral Division of *NEWCASTLE*
Writ, to me directed, and bearing date the

VICTORIA HALL IN THE TOWN OF NEWCASTLE

IN THE SAID ELECTORAL DIVISION

On WEDNESDAY, the SECOND DAY OF MARCH

in the year of our Lord one thousand eight hundred and sixty-three
purpose of electing a person to represent them in the LEGISLATIVE COUNCIL of this Province, in the place and stead of the person who has been elected to represent them in the said Council, and as demanded and allowed in the manner prescribed by law, such Poll will be opened on

THURSDAY AN



R.

3619

AMATEMENT.

Notice is hereby given to the Electors of the Division of *NEWCASTLE*, that in obedience to *Her Majesty's* command, and bearing date the *Tenth* day of the month of August, in the year one thousand eight hundred and sixty-three, I require the presence of the said electors, at

IN THE TOWN OF COBOURG,

IN THE ELECTORAL DIVISION,

ON THE SECOND day of September,

in the year one thousand eight hundred and sixty-three, at the hour of *twelve o'clock, noon*, for the purpose of electing a Member of Parliament, in the place and stead of the late Honorable *ANDREW JEFFREY*, deceased, and that in case a Poll shall be

AND FRIDAY,

THURSDAY AN

The 10th & 11th day

in the year of our Lord one thousand eight hundred and

East Ward, Town of Cobourg, in the building known as Munson's shop, Swayne street.

West ward, at the house formerly occupied by Allan Darling, corner of King and Spring streets.

South ward, at No. 2 Fire Engine House.

Town Hall, Coldsprings, in the township of Hamilton.

town hall, Grafton, in the township of Haldimand.

town hall, in the township of Alnwick.

Near the township clerk's office, in the township of South Monaghan.

Town Hall, Castleton, in the township of Cramahe.

town hall, in the village of Colborne.

town hall, in the village of Brighton.

Tow

town

town

town

Tow

t

wa

wa

Villa

Tow

Villa

t

**OF ALL WHICH EVERY PERSON IS HERE
AND GOVERN HIMSELF**

Given under my hand, at the Village of Colborne, in the
August, in the year of our Lord one thousand eight hundred and

[G. M. Kelly, Printer, Colborne.]

Returning Of

AND FRIDAY, n days of September,

hundred and sixty-three, at the following places, namely,

known	Town hall, Hilton, in the township of Brighton.
Allan	town hall, in the township of Murray. town hall, in the township of Seymour. town hall, in the township of Percy.
Hilton.	Town of Port Hope, ward No. 1, in the shop belonging to M. F. Whitehead, Esq., on Mill street.
and.	ward No. 2, at the town hall. ward No. 3, at the engine house on Ontario street.
ship of	Village of Canton, in the township of Hope, near the hotel formerly kept by Elias Crawley.
the.	Town hall, Millbrook, township of Cavan. Village of Ballyduff, in the township of Manvers, near the hotel of the late Gregg Benson.

**IS HEREBY REQUIRED TO TAKE NOTICE
HIMSELF ACCORDINGLY.**

olborne, in the said Division of Newcastle, this 17th day of
ght hundred and sixty-three.

JOHN M. GROVER,

Returning Officer for the Electoral Division of Newcastle.

