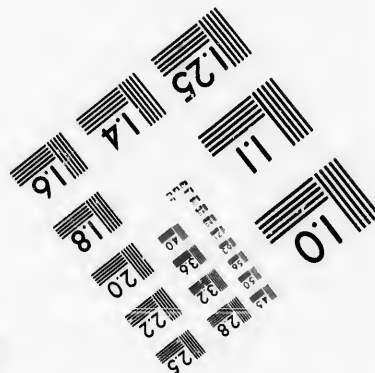
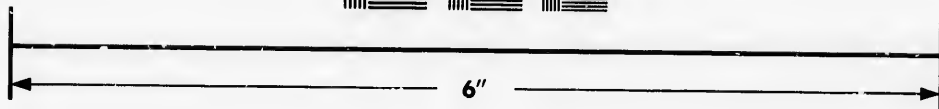
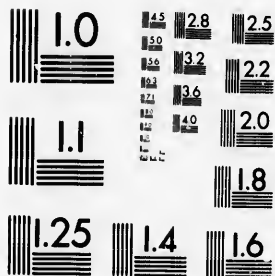


**IMAGE EVALUATION  
TEST TARGET (MT-3)**



**Photographic  
Sciences  
Corporation**

23 WEST MAIN STREET  
WEBSTER, N.Y. 14580  
(716) 872-4503



**CIHM/ICMH  
Microfiche  
Series.**

**CIHM/ICMH  
Collection de  
microfiches.**



Canadian Institute for Historical Microreproductions / Institut canadien de microreproductions historiques



**© 1986**

Technical and Bibliographic Notes/Notes techniques et bibliographiques

The Institute has attempted to obtain the best original copy available for filming. Features of this copy which may be bibliographically unique, which may alter any of the images in the reproduction, or which may significantly change the usual method of filming, are checked below.

L'Institut a microfilmé le meilleur exemplaire qu'il lui a été possible de se procurer. Les détails de cet exemplaire qui sont peut-être uniques du point de vue bibliographique, qui peuvent modifier une image reproduite, ou qui peuvent exiger une modification dans la méthode normale de filmage sont indiqués ci-dessous.

- |  |  |
|--|--|
| <input type="checkbox"/> Coloured covers/<br>Couverture de couleur   | <input type="checkbox"/> Coloured pages/<br>Pages de couleur   |
| <input type="checkbox"/> Covers damaged/<br>Couverture endommagée  | <input checked="" type="checkbox"/> Pages damaged/<br>Pages endommagées  |
| <input type="checkbox"/> Covers restored and/or laminated/<br>Couverture restaurée et/ou pelliculée  | <input type="checkbox"/> Pages restored and/or laminated/<br>Pages restaurées et/ou pelliculées  |
| <input type="checkbox"/> Cover title missing/<br>Le titre de couverture manque   | <input checked="" type="checkbox"/> Pages discoloured, stained or foxed/<br>Pages décolorées, tachetées ou piquées   |
| <input type="checkbox"/> Coloured maps/<br>Cartes géographiques en couleur   | <input type="checkbox"/> Pages detached/<br>Pages détachées  |
| <input type="checkbox"/> Coloured ink (i.e. other than blue or black)/<br>Encre de couleur (i.e. autre que bleue ou noire)   | <input checked="" type="checkbox"/> Showthrough/<br>Transparence   |
| <input type="checkbox"/> Coloured plates and/or illustrations/<br>Planches et/ou illustrations en couleur  | <input type="checkbox"/> Quality of print varies/<br>Qualité inégale de l'impression   |
| <input type="checkbox"/> Bound with other material/<br>Relié avec d'autres documents   | <input type="checkbox"/> Includes supplementary material/<br>Comprend du matériel supplémentaire   |
| <input type="checkbox"/> Tight binding may cause shadows or distortion<br>along interior margin/<br>La reliure serrée peut causer de l'ombre ou de la<br>distorsion le long de la marge intérieure   | <input type="checkbox"/> Only edition available/<br>Seule édition disponible   |
| <input type="checkbox"/> Blank leaves added during restoration may<br>appear within the text. Whenever possible, these<br>have been omitted from filming/<br>Il se peut que certaines pages blanches ajoutées<br>lors d'une restauration apparaissent dans le texte,<br>mais, lorsque cela était possible, ces pages n'ont<br>pas été filmées. | <input type="checkbox"/> Pages wholly or partially obscured by errata<br>slips, tissues, etc., have been refilmed to<br>ensure the best possible image/<br>Les pages totalement ou partiellement<br>obscurcies par un feuillet d'errata, une pelure,<br>etc., ont été filmées à nouveau de façon à<br>obtenir la meilleure image possible. |
| <input checked="" type="checkbox"/> Additional comments: /<br>Commentaires supplémentaires:  | Printed ephemera [4] p.  |

This item is filmed at the reduction ratio checked below/  
Ce document est filmé au taux de réduction indiqué ci-dessous.

10X	14X	18X	22X	26X	30X
<input type="checkbox"/>	<input type="checkbox"/>	<input type="checkbox"/>	<input type="checkbox"/>	<input type="checkbox"/>	<input checked="" type="checkbox"/>
12X	16X	20X	24X	28X	32X

The copy filmed here has been reproduced thanks to the generosity of:

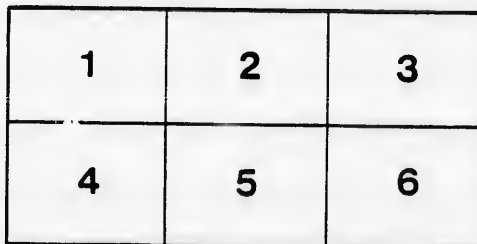
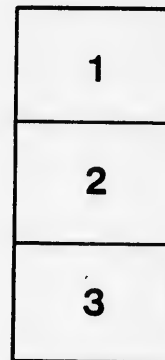
D. B. Weldon Library  
University of Western Ontario  
(Regional History Room)

The images appearing here are the best quality possible considering the condition and legibility of the original copy and in keeping with the filming contract specifications.

Original copies in printed paper covers are filmed beginning with the front cover and ending on the last page with a printed or illustrated impression, or the back cover when appropriate. All other original copies are filmed beginning on the first page with a printed or illustrated impression, and ending on the last page with a printed or illustrated impression.

The last recorded frame on each microfiche shall contain the symbol  $\rightarrow$  (meaning "CONTINUED"), or the symbol  $\nabla$  (meaning "END"), whichever applies.

Maps, plates, charts, etc., may be filmed at different reduction ratios. Those too large to be entirely included in one exposure are filmed beginning in the upper left corner, left to right and top to bottom, as many frames as required. The following diagrams illustrate the method:



L'exemplaire filmé fut reproduit grâce à la générosité de:

D. B. Weldon Library  
University of Western Ontario  
(Regional History Room)

Les images suivantes ont été reproduites avec le plus grand soin, compte tenu de la condition et de la netteté de l'exemplaire filmé, et en conformité avec les conditions du contrat de filmage.

Les exemplaires originaux dont la couverture en papier est imprimée sont filmés en commençant par le premier plat et en terminant soit par la dernière page qui comporte une empreinte d'impression ou d'illustration, soit par le second plat, selon le cas. Tous les autres exemplaires originaux sont filmés en commençant par la première page qui comporte une empreinte d'impression ou d'illustration et en terminant par la dernière page qui comporte une telle empreinte.

Un des symboles suivants apparaîtra sur la dernière image de chaque microfiche, selon le cas: le symbole  $\rightarrow$  signifie "A SUIVRE", le symbole  $\nabla$  signifie "FIN".

Les cartes, planches, tableaux, etc., peuvent être filmés à des taux de réduction différents. Lorsque le document est trop grand pour être reproduit en un seul cliché, il est filmé à partir de l'angle supérieur gauche, de gauche à droite, et de haut en bas, en prenant le nombre d'images nécessaire. Les diagrammes suivants illustrent la méthode.

MICHIGAN, OHIO  
CANADIAN CIRCUIT

EIGHTEEN  
THEATRES

CLEVELAND, CINCINNATI, BUFFALO,  
DETROIT, TORONTO,  
TOLEDO, LONDON, HAMILTON,  
WOODSTOCK, SAGINAW,  
GRAND RAPIDS, BAY CITY AND  
JACKSON.

# Grand OPERATION House London.

C. J. WHITNEY. A. E. ROOTE. ONTARIO.  
LESSEE. MANAGER



W. SMITH.

E. HOLLAND.

W. S. PARTRIDGE.

## SMITH & BROS.

THE  
LEADING  
SANITARY  
PLUMBERS  
AND  
HEATING  
ENGINEERS  
OF  
WESTERN  
ONTARIO.

376  
RICHMOND STREET,

LONDON.

OPPOSITE GRAND OPERA HOUSE BUILDING.

A full stock of Supplies always on hand.

TELEPHONE 538.

LADIES! THE ONLY WAY TO GET HELP IS THROUGH THE "FREE PRESS" WANT COLUMN.



Parisian  
Steam  
Laundry

73 & 75 DUNDAS STREET.

BRANCH OFFICES:

226 Dundas St. 752 Waterloo. 410 Hamilton Rd.  
280 " " 572 Pall Mall. 214 Wellington.  
310 " " 280 Richmond. 238 Ridout.  
032 " " 485

J. K. SPRY, Manager.

HUESTON'S

LIVERY,  
Goupe & Cab Stables  
WELLINGTON STREET.

Finest Horses and Carriages in the City.  
OPEN DAY AND NIGHT. TELEPHONE 441.

ROBT. HUESTON,  
Proprietor.

H. McKENNA,  
—FOR—

Choice Cigars, Tobaccos  
AND PIPES.

ALWAYS OPEN .....  
..... AFTER THE OPERA.

225 DUNDAS STREET.

SPRING



1894.

WE have just received the finest assortment of Spring Hats ever shown in the city. We are leaders for correct shapes, try us. A pleasure to show goods.

Rivard

LONDON'S FASHIONABLE HATTER AND FURRIER .....  
400 RICHMOND STREET.

WILLIAMS' Pianos CANADA'S FAVORITE

Cannot be excelled for touch, singing quality, delicacy and great power of tone, with highest excellence of workmanship.

ALL THE LATEST VOCAL AND INSTRUMENTAL MUSIC RECEIVED AS PUBLISHED.

Musical Instruments of all kinds, Strings and Fittings AT LOWEST PRICES.

R. S. WILLIAMS & SON, 171 DUNDAS STREET, LONDON, ONT.

J. A. CRODEN, Manager.

PROGRAMME

THURSDAY NIGHT.

THE FAVORITE ACTRESS, *March 29/94*

Ida Van Cortland

And the Magnificent Organization of Players known as

Tavernier's Stock Company.

FANCHON,

The Cricket.

CAST OF CHARACTERS.

FANCHON, IDA VAN CORTLAND  
Father Barbeau [a rich farmer].....Lew A. Warner  
Landry, } Twin {.....Howard Hall  
Didier, } Brothers {.....M. B. Streeter  
Etienne.....G. H. Howson  
Pierre.....Henry Williams  
Colin.....John P. Smith  
Father Caillard.....Geo. H. Howson  
Martineau.....F. A. Millis  
Old Fadet.....John E. Miles  
Mother Barbeau.....Nellie Morgan  
Madelon.....Margaret Crofton  
Susette.....Silence Vyse  
Annette.....Eugene Black

SYNOPSIS.

ACT I.—The Shadow Dance. ACT II.—St. Andoche Festival.  
ACT III.—The Will o' the Wisp. ACT IV.—A year later.

Specialties will be introduced in Acts II. and IV.

Matinee Saturday Afternoon.

(Programme continued on next page.)

SOMETHING NEW.

Opera English & Canadian  
Caramels. Chocolate Creams.

VERY FINEST Olives in Bulk.  
French Crystalized ..Fresh Roquefort Cheese..  
FRUITS.

FITZGERALD, SCANDRETT & CO.  
139 Dundas Street.

ESTABLISHED 1831.

H. DAVIS & SON,  
WATCHMAKERS  
AND  
JEWELLERS

DEALERS IN

Watches, Clocks, Jewellery, Spectacles,  
Silver Plated Ware, &c.

170 DUNDAS ST., LONDON, ONT.

W. T. STRONG

Dispensing  
Chemist,

184 Dundas Street,  
LONDON, - ONTARIO.

BROWN,



145 Dundas Street.

OUR aim has been to steadily increase our business by the excellence of our goods and the low price at which we sell them; and we are pleased to tell our patrons that we have succeeded beyond our highest expectations. The reputation enjoyed by Brown's Shoe Store as the leader in .....  
First-Class, Stylish, Fine Footwear ..... has been well earned.

Our 1894 Spring and Summer Stock will contain all the Latest Designs from the leading American and Canadian Houses, and will combine the Novel with the Serviceable.

THE FOLLOWING ARE SOME OF OUR NEWEST:—  
FOR LADIES:

"The Prince Edna," "Lapelle," "Eugene"  
"Jacquette," "Eulalia," "Summer" (six large buttons), "Blucerrette"  
"White Stitched Oxford, with French Heel" (very pretty).

FOR GENTLEMEN:

"New York Razor Toe Wing Tip,"  
IN PATENT AND TAN.  
"Abington," Turned Sole Bal.  
(A VERY NICE DRESS SHOE.)  
"Harvard," Calf Bal.,  
IN TAN AND BLACK.  
"Opera," "Hon-Ton," "Old London."

We have also full lines of staple goods of the highest grade, and in our Heavy Boot Department we sell ten per cent. cheaper than similar goods can be bought for elsewhere. In Boys', Girls' and Babies' Shoes, we carry a great variety in all grades, calculated to meet every requirement for school, play and dress.

See our Windows. Inspect our Goods. Ascertain our Prices.

BROWN.  
TELEPHONE 881.

IF YOU WANT THE BEST TAKE THE "FREE PRESS." ALL THE NEWS!

— TRY —  
**SOUTHCOTT'S**  
 FOR A Nice Suit  
 Fancy Vest   
 or Trousers  
 BEST LINE OF LIGHT-WEIGHT OVERCOATINGS IN STOCK.  
 Satisfaction Assured. Prices Right.  
 361 RICHMOND STREET.

I-I-I-I-I-I-I-I-I-I

PRINTERS  
 LITHOGRAPHERS  
 ENGRAVERS

The \_\_\_\_\_  
 London  
 Printing and  
 Lithographing  
 Co'y,  
SUCCESSORS TO FREE PRESS  
 PRINTING AND LITHO.  
 DEPARTMENTS.

OFFICE, "FREE PRESS" BUILDING. BEST WORK AT MODERATE PRICES.

I-I-I-I-I-I-I-I-I-I

**TECUMSEH HOUSE**  
 LONDON.



Directly opposite G.T.R. depot; street railway past the doors; convenient to all the wholesale and retail business houses of city, making it the most desirable hotel in the city; elevator, and heated throughout with steam.

Porter in attendance on arrival of all trains.

**RATES, \$2.00 AND \$2.50 PER DAY,**

ACCORDING TO LOCATION.

No Extra Charge For Baggage.

C. W. DAVIS, PROP.

**Gentlemen:**  
 SEE OUR LEADING  
**SPRING HAT**  
**For \$2.00.**  
*In Colored and Black.*  
**GRAHAM BROS.,**  
 LEADING HATTERS AND FURNISHERS, / 159 DUNDAS ST.

«Programme Continued.»

Friday, March 30th.

The Great Emotional Play,

**East Lynne,**  
 or THE ELOPEMENT.

CAST OF CHARACTERS.

Lady Isabel,.....)	IDA VAN CORTLAND.
Madam Vine,.....)	
Barbare Hare.....)	Margaret Crofton
Conney.....)	Nellie Morgan
Joyce.....)	Silence Vyse
Willie.....)	Donald Warner
Sir Francis Levison.....)	Albert Tavernier
Archibald.....)	Howard Hall
Lord Mount Severn.....)	Lew A. Warner
Dill.....)	M. B. Streeter
Dick Hare.....)	John E. Miles
Officer.....)	Geo. H. Howson

SYNOPSIS.

ACT I.—Lady Isabel's arrival.  
 ACT II.—The Elopement.  
 ACT III.—Retribution.  
 ACT IV.—The New Governess  
 ACT V.—Death.

NOTE.—Incidental to this play, specialties will be introduced in Act IV. by Mr. M. B. Streeter, and Miss Vyse will appear between Acts II. and III.

To-Morrow Night —THE DANITES.

Grand Family Matinee Saturday, at 2.30. . . . .

**THE MIGHTY DOLLAR.**

EXECUTIVE STAFF FOR IDA VAN CORTLAND.

Tavernier Bros. . . . . Proprietors	M. B. Streeter, Stage Manager
Albert Tavernier. . . . . Manager	F. Jimerson. Musical Director
Frank L. Miles, Representative	John T. Myers. Calcium Lights
F. A. Millis. . . . . Properties.	

(Programme continued on last page.)

**McLEAN'S HARDWARE**

— FOR —

**Bissell's Carpet Sweepers.**

WE CAN SHOW YOU TWELVE DIFFERENT STYLES SAME AS ARE NOW DISPLAYED BY THE BISSELL COMPANY AT THE WORLD'S FAIR.

CALL AND SEE THESE GOODS

— AT —

**McLEAN'S HARDWARE,**  
 151 Dundas Street.

**Wm. Stevely & Son,**  
 — THE LEADING DEALERS IN —  
 STOVES, RANGES,  
 .. AND ..  
 HOUSE FURNISHING GOODS.  
 OUR STOCK IS THE LARGEST.  
 OUR PRICES THE LOWEST.  
 362 RICHMOND STREET.  
 'PHONE 452.

**W. T. STRONG,**  
 Dispensing  
 Chemist,  
 184 DUNDAS ST.,  
 LONDON, ONT.

.. FOR ..  
 Fine Etchings....  
 — AND —  
 Engravings  
 — TRY —  
 O. B. GRAVES,  
 222 DUNDAS STREET.

A WONDER-WORKING

**Quarter!**

— IS A —  
 25 CENT PIECE

INVESTED IN **3** Elegant

**GROTTO**  
**BOUQUET**

**CIGARS**

OF QUALITY AND AROMA, MADE OF EXCELLENT

HABANA FILLER,

Very Mild and Delicious.

**BRENER BROS.**

## OLD STAMPS WANTED

All kinds of Canadian, Nova Scotia, New Brunswick, Prince Edward Island, British Columbia, Newfoundland and United States postage stamps are valuable. We desire to purchase for prompt cash. I can pay you according to the value of the stamps on original. Do not wait up to a year or more before you are paid. Send all you can find to us on approval. We will remit highest price by return of mail. Common stamps now in use are not wanted. If you have no old letters you may have some friends that have. You will confer a favor on both of us by calling their attention to this. Write now! do not delay.

**T. M. STABLER.**  
185j Dundas Street, LONDON, CANADA.  
(Mention this Paper.)

## EDY BROS.

The Artistic Photographers,

—RECEIVED—  
**Three First Prizes**

—AND—  
**DIPLOMA**

For Finest Display of Photography

AT WESTERN FAIR, 1893.

Cabinet Photos, \$3 per doz.

## EDY BROS.,

214 DUNDAS STREET.

### THE FICKLE PUBLIC.

When melodrama holds the stage,  
The people for the minstrel rage.

And when the troubadours are starred,  
Their fancy turns to Avon's bard.

But when the house with Shakespeare's filled,  
They want to see the opera billed.

Then when the opera fills the house,  
They call for farce "mit Saus und Braus."

And so it goes; and it's a race  
Twixt manager and populace.

For, spite of broad and varied range  
The fickle people always change.

And always quit the best to see  
Some stupid meeting, billed as "Free."

At the Opera Box Office.

MRS. NEWGOLD (at the box office).—Are opera seats on sale here?

TICKET SELLER.—Yes, Ma'am.

MRS. NEWGOLD.—Well, what night do Lohengrin and Carmen sing together?—*Chicago Record.*

As He Liked It.

UNSOPHISTICATED YOUTH (at the box office).—"I'll take two seats for to-morrow night. What are they going to play?"

TREASURER WALTERS.—"As You Like It."

U. Y.—"As I Like It? Well, if it's all the same, you can put me down for Romeo and Joolyut."—*St. Louis Republican.*

FIND YOUR FORTUNE IN LUCKY

## SANTO DOMINGO

INVESTMENT BONDS guaranteed by the SANTO DOMINGO GUARANTY CO.

Allotments take place monthly, and are payable in U. S. gold coin in sums of \$160,000, \$40,000, \$20,000, etc. 5,692 Bonds paid monthly, aggregating \$574,880. Subscription fees, \$10, \$5, \$2, \$1, 50c. and 25c.

Apply to Local Agents, or address,

**ANTONIO MORA,** CITY OF SANTO DOMINGO,  
SANTO DOMINGO, . . . . .

### «Programme Concluded.»

During the evening, incidental to the stage performance, the ORCHESTRA of the Grand Opera House, under the direction of MR. FRED. L. EVANS, will perform the following selections

OVERTURE—"Martha," . . . . . Flotow  
RUSSIAN MAZURKA—"La Czarine," . . . . . Ganne  
VISIONS IN A DREAM—(Descriptive), . . . . . Lumbye  
GALOP—"Tarif," . . . . . Schacht

The above programme subject to transposition

N. B.—The Orchestra of the Grand Opera House may be secured for engagements outside the theatre, by applying at or addressing the Box Office.

The Furniture used on stage is supplied by JOHN FERGUSON & SON, Furniture Manufacturers.

### \*NEXT + ATTRACTION.\*

MONDAY, APRIL 2nd.

THE BRIGHT, SPARKLING,  
MIRTHFUL COMEDY,

## GLORIANA

By JAMES E. MORTIMER.

A Perfect Company of Comedians,  
AND THE CHARMING  
ACTRESS,

### Emily Bancker.

The Company:

GEORGE BARNUM.  
ALF. HAMPTON.  
GEO. WEBSTER PARSONS.  
EUGENE EBERLE.  
J. G. GLENNEY.  
TILLIE BARNUM.  
JULIETTE DOWNS, and  
EMILY BANCKER.

Gloriana's Record:

350 Nights in London.  
200 Nights in Paris.  
150 Nights in New York.  
2 Months in Boston.  
4 Weeks in Chicago.  
4 Weeks in Philadelphia.

Under the Direction of THOS. W. RYLEY.

2<sup>nd</sup> Sale of Seats begins Friday Morning, March 30th.

### COMING ATTRACTIONS

Are always a source of interest,—  
theatrical or otherwise. Our attraction just now is the new coal we are receiving daily. It comes direct from the mine, in box care; is clean, dry, and strictly first-class. All orders, large or small, will receive our prompt and careful attention. Offices, 421 Richmond St., and 318 Burwell St. A. D. Cameron & Son.

WE call the attention of our business men to the PROGRAM as an advertising medium. It reaches the class of people whose trade you want, and the way to get that trade is to make yourself known.

## BELTON & ROOTE,

BILL POSTING,  
DISTRIBUTING

...AND...  
GENERAL ADVERTISING AGENTS

Control all the Bill Boards and Dead Walls throughout the City. Population of City, 40,000

All orders for Bill Posting, Distributing Card Tacking, and General Advertising for Western Ontario will receive prompt attention.

OFFICE: BOX OFFICE, OPERA HOUSE.

Roses. Carnations.  
Palms.

Ferns. Bulbs.

## J. GAMMAGE & SONS,

213 Dundas Street.

## INDIAN... TEA IMPORTING HOUSE.

CEYLON

NEW BLENDS, DELICIOUS AND ECONOMICAL, AT MODERATE PRICES.

"English Breakfast," "Five o'clock Tea," & "Club House" Blends.  
60c. 50c. 45c.

These Blends are standard selections of choice Teas. Highly recommended to families for their fine quality and economical properties.

**S. FUGE,** —IMPORTER OF—  
CHOICE TEAS. 212 Dundas St.  
TELEPHONE 858. LONDON.



