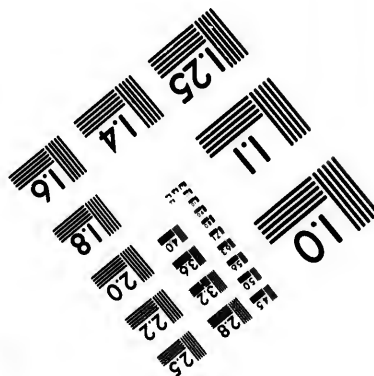
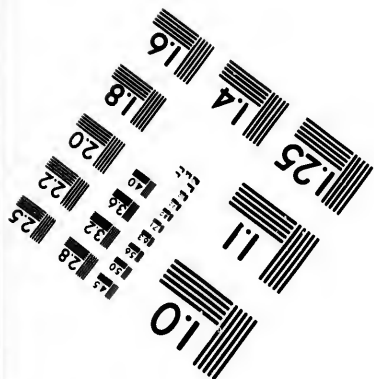
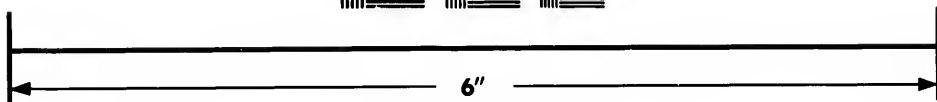
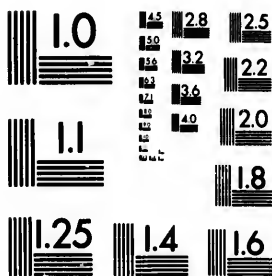


**IMAGE EVALUATION  
TEST TARGET (MT-3)**



**Photographic  
Sciences  
Corporation**

23 WEST MAIN STREET  
WEBSTER, N.Y. 14580  
(716) 872-4503

1.5 1.8 2.0 2.2 2.5  
2.8 3.2 3.6 4.0

**CIHM/ICMH  
Microfiche  
Series.**

**CIHM/ICMH  
Collection de  
microfiches.**



Canadian Institute for Historical Microreproductions / Institut canadien de microreproductions historiques

01  
10  
11  
12  
13  
14  
15  
16  
17  
18  
19  
20  
21  
22  
23  
24  
25  
26  
27  
28  
29  
30

**© 1987**

Technical and Bibliographic Notes/Notes techniques et bibliographiques

The Institute has attempted to obtain the best original copy available for filming. Features of this copy which may be bibliographically unique, which may alter any of the images in the reproduction, or which may significantly change the usual method of filming, are checked below.

L'Institut a microfilmé le meilleur exemplaire qu'il lui a été possible de se procurer. Les détails de cet exemplaire qui sont peut-être uniques du point de vue bibliographique, qui peuvent modifier une image reproduite, ou qui peuvent exiger une modification dans la méthode normale de filmage sont indiqués ci-dessous.

- Coloured covers/  
Couverture de couleur
- Covers damaged/  
Couverture endommagée
- Covers restored and/or laminated/  
Couverture restaurée et/ou pelliculée
- Cover title missing/  
Le titre de couverture manque
- Coloured maps/  
Cartes géographiques en couleur
- Coloured ink (i.e. other than blue or black)/  
Encre de couleur (i.e. autre que bleue ou noire)
- Coloured plates and/or illustrations/  
Planches et/ou illustrations en couleur
- Bound with other material/  
Relié avec d'autres documents
- Tight binding may cause shadows or distortion along interior margin/  
La reliure serrée peut causer de l'ombre ou de la distorsion le long de la marge intérieure
- Blank leaves added during restoration may appear within the text. Whenever possible, these have been omitted from filming/  
Il se peut que certaines pages blanches ajoutées lors d'une restauration apparaissent dans le texte, mais, lorsque cela était possible, ces pages n'ont pas été filmées.
- Additional comments:/  
Commentaires supplémentaires:

- Coloured pages/  
Pages de couleur
- Pages damaged/  
Pages endommagées
- Pages restored and/or laminated/  
Pages restaurées et/ou pelliculées
- Pages discoloured, stained or foxed/  
Pages décolorées, tachetées ou piquées
- Pages detached/  
Pages détachées
- Showthrough/  
Transparence
- Quality of print varies/  
Qualité inégale de l'impression
- Includes supplementary material/  
Comprend du matériel supplémentaire
- Only edition available/  
Seule édition disponible
- Pages wholly or partially obscured by errata slips, tissues, etc., have been refilmed to ensure the best possible image/  
Les pages totalement ou partiellement obscurcies par un feuillet d'errata, une pelure, etc., ont été filmées à nouveau de façon à obtenir la meilleure image possible.

[Printed ephemera] 1 sheet (verso blank)

This item is filmed at the reduction ratio checked below/  
Ce document est filmé au taux de réduction indiqué ci-dessous.

10X	14X	18X	22X	26X	30X
<input type="checkbox"/>	<input type="checkbox"/>	<input type="checkbox"/>	<input checked="" type="checkbox"/>	<input type="checkbox"/>	<input type="checkbox"/>
12X	16X	20X	24X	28X	32X

The copy filmed here has been reproduced thanks to the generosity of:

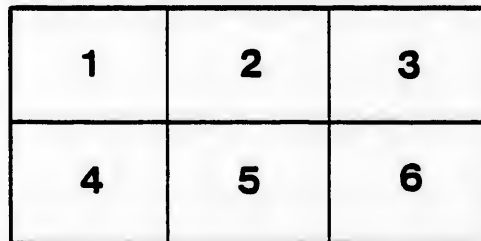
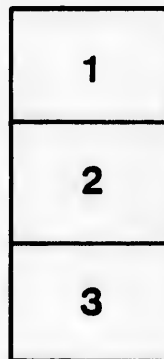
Manuscript Division  
Public Archives of Canada

The images appearing here are the best quality possible considering the condition and legibility of the original copy and in keeping with the filming contract specifications.

Original copies in printed paper covers are filmed beginning with the front cover and ending on the last page with a printed or illustrated impression, or the back cover when appropriate. All other original copies are filmed beginning on the first page with a printed or illustrated impression, and ending on the last page with a printed or illustrated impression.

The last recorded frame on each microfiche shall contain the symbol  $\rightarrow$  (meaning "CONTINUED"), or the symbol  $\nabla$  (meaning "END"), whichever applies.

Maps, plates, charts, etc., may be filmed at different reduction ratios. Those too large to be entirely included in one exposure are filmed beginning in the upper left hand corner, left to right and top to bottom, as many frames as required. The following diagrams illustrate the method:



L'exemplaire filmé fut reproduit grâce à la générosité de:

Division des manuscrits  
Archives publiques du Canada

Les images suivantes ont été reproduites avec le plus grand soin, compte tenu de la condition et de la netteté de l'exemplaire filmé, et en conformité avec les conditions du contrat de filmage.

Les exemplaires originaux dont la couverture en papier est imprimée sont filmés en commençant par le premier plat et en terminant soit par la dernière page qui comporte une empreinte d'impression ou d'illustration, soit par le second plat, selon le cas. Tous les autres exemplaires originaux sont filmés en commençant par la première page qui comporte une empreinte d'impression ou d'illustration et en terminant par la dernière page qui comporte une telle empreinte.

Un des symboles suivants apparaîtra sur la dernière image de chaque microfiche, selon le cas: le symbole  $\rightarrow$  signifie "A SUIVRE", le symbole  $\nabla$  signifie "FIN".

Les cartes, planches, tableaux, etc., peuvent être filmés à des taux de réduction différents. Lorsque le document est trop grand pour être reproduit en un seul cliché, il est filmé à partir de l'angle supérieur gauche, de gauche à droite, et de haut en bas, en prenant le nombre d'images nécessaire. Les diagrammes suivants illustrent la méthode.

# ASSOCIATION

FOR THE ADVANCEMENT OF SCIENCE.

MONTREAL MEETING. 3372

AUGUST 27th to SEPTEMBER 3rd, 1884.

PRESIDENT-ELECT

The Right Hon. LORD RAYLEIGH,

F.R.S., F.R.S.E., Fellow of the Royal Society and the University of Cambridge.

GENERAL AND EVENING MEETINGS.

ON WEDNESDAY AFTERNOON, at 4.30 O'CLOCK,

The Association will be received in the Queen's Hall by the Mayor and Council, and an Address of Welcome presented. Members of the Association will occupy the body of the Hall, entering from St. Catherine Street. Citizens attending will occupy the galleries, entering by University Street.

THE FIRST GENERAL MEETING WILL BE HELD

On Wednesday Evening, August 27th, at 8 P. M.

IN THE QUEEN'S HALL, ST. CATHERINE ST.

The retiring President will resign the chair, and Professor the Right Hon. Rayleigh, President-elect, will assume the presidency and deliver the ANNUAL ADDRESS. On THURSDAY EVENING, August 28th, a conversation will be given to members by the Governor of the University, in the building of the University. On FRIDAY EVENING, August 29th, Professor Oliver J. Lodge will lecture to members.

On MONDAY EVENING, September 1st, at 8 P. M., W. H. Perkin will deliver a discourse on "The modern Microscope, its researches and lower forms of Life."

ON TUESDAY EVENING, SEPT. 2nd,

## A CONVERSAZIONE

To the ladies will be given by the Citizens' Committee, in the Victoria Skating Rink, and on WEDNESDAY AFTERNOON, Sept. 3rd, the concluding general meeting will be held at 2.30 o'clock p. m.

His Excellency the Governor General has signified his intention of being present at and taking part in some of the meetings.

Sectional Meetings will take place on August 28th, 29th and 30th, September 1st, 2nd and 3rd, commencing at 11 o'clock each day.

The above meetings are open only to Members, Associates and Ladies holding tickets. Life membership, \$50; Annual membership, 1st year, \$10; afterward, \$5; Associates ticket, \$5. The above are given to Ladies as well as Gentlemen, and are not transferable. Ladies tickets transferable to Ladies only, \$5. For information as to Excursions, etc., see Daily Journal and other Notices.

## A PUBLIC LECTURE

IN THE QUEEN'S HALL, ST. CATHERINE ST.

Will be given by Prof. ROBERT S. BALL, F.R.S., of the Royal Society of Ireland, on "COMETS," on SATURDAY EVENING, Sept. 14th, at 8 P. M. Admission by Ticket, 10 cents each.

NOTICE TO CITIZENS OF MONTREAL. — As the space at the disposal of the Executive Committee is limited, and as it is hereby given to those who take out their Members' or Associates' vouchers on or before MONDAY, the 27th inst., can be guaranteed admission to the evening and evening Lectures.

