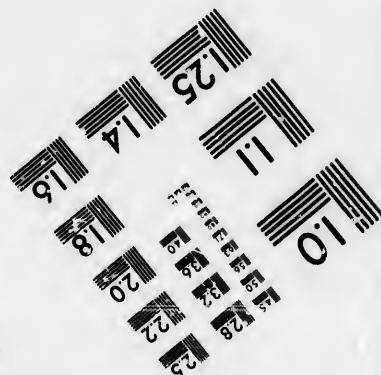
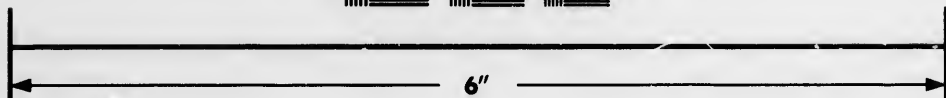
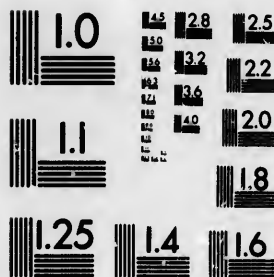


**IMAGE EVALUATION  
TEST TARGET (MT-3)**



**Photographic  
Sciences  
Corporation**

23 WEST MAIN STREET  
WEBSTER, N.Y. 14580  
(716) 872-4503

**CIHM/ICMH  
Microfiche  
Series.**

**CIHM/ICMH  
Collection de  
microfiches.**



**Canadian Institute for Historical Microreproductions / Institut canadien de microreproductions historiques**

**© 1985**

Technical and Bibliographic Notes/Notes techniques et bibliographiques

The Institute has attempted to obtain the best original copy available for filming. Features of this copy which may be bibliographically unique, which may alter any of the images in the reproduction, or which may significantly change the usual method of filming, are checked below.

L'institut a microfilmé le meilleur exemplaire qu'il lui a été possible de se procurer. Les détails de cet exemplaire qui sont peut-être uniques du point de vue bibliographique, qui peuvent modifier une image reproduite, ou qui peuvent exiger une modification dans la méthode normale de filmage sont indiqués ci-dessous.

- |   |   |
|---|---|
| <input type="checkbox"/> Coloured covers/<br>Couverture de couleur  | <input checked="" type="checkbox"/> Coloured pages/<br>Pages de couleur   |
| <input type="checkbox"/> Covers damaged/<br>Couverture endommagée   | <input type="checkbox"/> Pages damaged/<br>Pages endommagées  |
| <input type="checkbox"/> Covers restored and/or laminated/<br>Couverture restaurée et/ou pelliculée   | <input type="checkbox"/> Pages restored and/or laminated/<br>Pages restaurées et/ou pelliculées   |
| <input type="checkbox"/> Cover title missing/<br>Le titre de couverture manque  | <input checked="" type="checkbox"/> Pages discoloured, stained or foxed/<br>Pages décolorées, tachetées ou piquées  |
| <input type="checkbox"/> Coloured maps/<br>Cartes géographiques en couleur  | <input type="checkbox"/> Pages detached/<br>Pages détachées   |
| <input type="checkbox"/> Coloured ink (i.e. other than blue or black)/<br>Encre de couleur (i.e. autre que bleue ou noire)  | <input checked="" type="checkbox"/> Showthrough/<br>Transparence  |
| <input type="checkbox"/> Coloured plates and/or illustrations/<br>Planches et/ou illustrations en couleur   | <input type="checkbox"/> Quality of print varies/<br>Qualité inégale de l'impression  |
| <input type="checkbox"/> Bound with other material/<br>Relié avec d'autres documents  | <input type="checkbox"/> Includes supplementary material/<br>Comprend du matériel supplémentaire  |
| <input type="checkbox"/> Tight binding may cause shadows or distortion along interior margin/<br>La reliure serrée peut causer de l'ombre ou de la distorsion le long de la marge intérieure  | <input type="checkbox"/> Only edition available/<br>Seule édition disponible  |
| <input type="checkbox"/> Blank leaves added during restoration may appear within the text. Whenever possible, these have been omitted from filming/<br>Il se peut que certaines pages blanches ajoutées lors d'une restauration apparaissent dans le texte, mais, lorsque cela était possible, ces pages n'ont pas été filmées. | <input type="checkbox"/> Pages wholly or partially obscured by errata slips, tissues, etc., have been refilmed to ensure the best possible image/<br>Les pages totalement ou partiellement obscurcies par un feuillet d'errata, une pelure, etc., ont été filmées à nouveau de façon à obtenir la meilleure image possible. |
| <input type="checkbox"/> Additional comments:<br>Commentaires supplémentaires:  |   |

This item is filmed at the reduction ratio checked below/  
Ce document est filmé au taux de réduction indiqué ci-dessous.

10X	14X	18X	22X	26X	30X
<input type="checkbox"/>	<input type="checkbox"/>	<input type="checkbox"/>	<input type="checkbox"/>	<input checked="" type="checkbox"/>	<input type="checkbox"/>
12X	16X	20X	24X	28X	32X

The copy filmed here has been reproduced thanks to the generosity of:

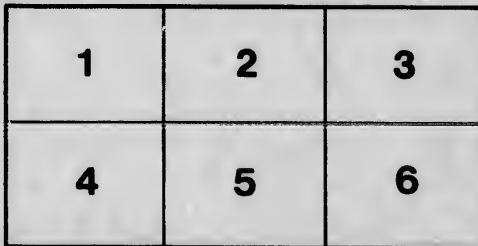
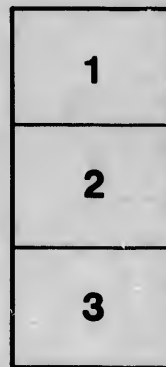
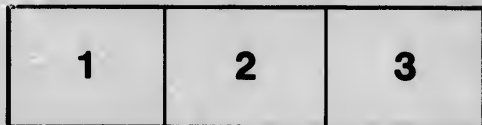
National Library of Canada

The images appearing here are the best quality possible considering the condition and legibility of the original copy and in keeping with the filming contract specifications.

Original copies in printed paper covers are filmed beginning with the front cover and ending on the last page with a printed or illustrated impression, or the back cover when appropriate. All other original copies are filmed beginning on the first page with a printed or illustrated impression, and ending on the last page with a printed or illustrated impression.

The last recorded frame on each microfiche shall contain the symbol  $\rightarrow$  (meaning "CONTINUED"), or the symbol  $\nabla$  (meaning "END"), whichever applies.

Maps, plates, charts, etc., may be filmed at different reduction ratios. Those too large to be entirely included in one exposure are filmed beginning in the upper left hand corner, left to right and top to bottom, as many frames as required. The following diagrams illustrate the method:



L'exemplaire filmé fut reproduit grâce à la générosité de:

Bibliothèque nationale du Canada

Les images suivantes ont été reproduites avec le plus grand soin, compte tenu de la condition et de la netteté de l'exemplaire filmé, et en conformité avec les conditions du contrat de filmage.

Les exemplaires originaux dont la couverture en papier est imprimée sont filmés en commençant par le premier plat et en terminant soit par le dernière page qui comporte une empreinte d'impression ou d'illustration, soit par le second plat, selon le cas. Tous les autres exemplaires originaux sont filmés en commençant par la première page qui comporte une empreinte d'impression ou d'illustration et en terminant par la dernière page qui comporte une telle empreinte.

Un des symboles suivants apparaîtra sur la dernière image de chaque microfiche, selon le cas: le symbole  $\rightarrow$  signifie "A SUIVRE", le symbole  $\nabla$  signifie "FIN".

Les cartes, planches, tableaux, etc., peuvent être filmés à des taux de réduction différents. Lorsque le document est trop grand pour être reproduit en un seul cliché, il est filmé à partir de l'angle supérieur gauche, de gauche à droite, et de haut en bas, en prenant le nombre d'images nécessaire. Les diagrammes suivants illustrent la méthode.

re  
détails  
es du  
modifier  
er une  
filmage

s

errata  
to

pelure,  
en à

32X

*Circular.*

PROVINCIAL SECRETARY'S OFFICE,  
Halifax, 11<sup>th</sup> April, 1849.

SIR—

*I have the honor to transmit, by the Lieutenant Governor's command, for the information and guidance of the Board of Health at* *Michael*  
*a copy of a Resolution passed in the last Session of the Legislature.*

*I have the honor to be,*

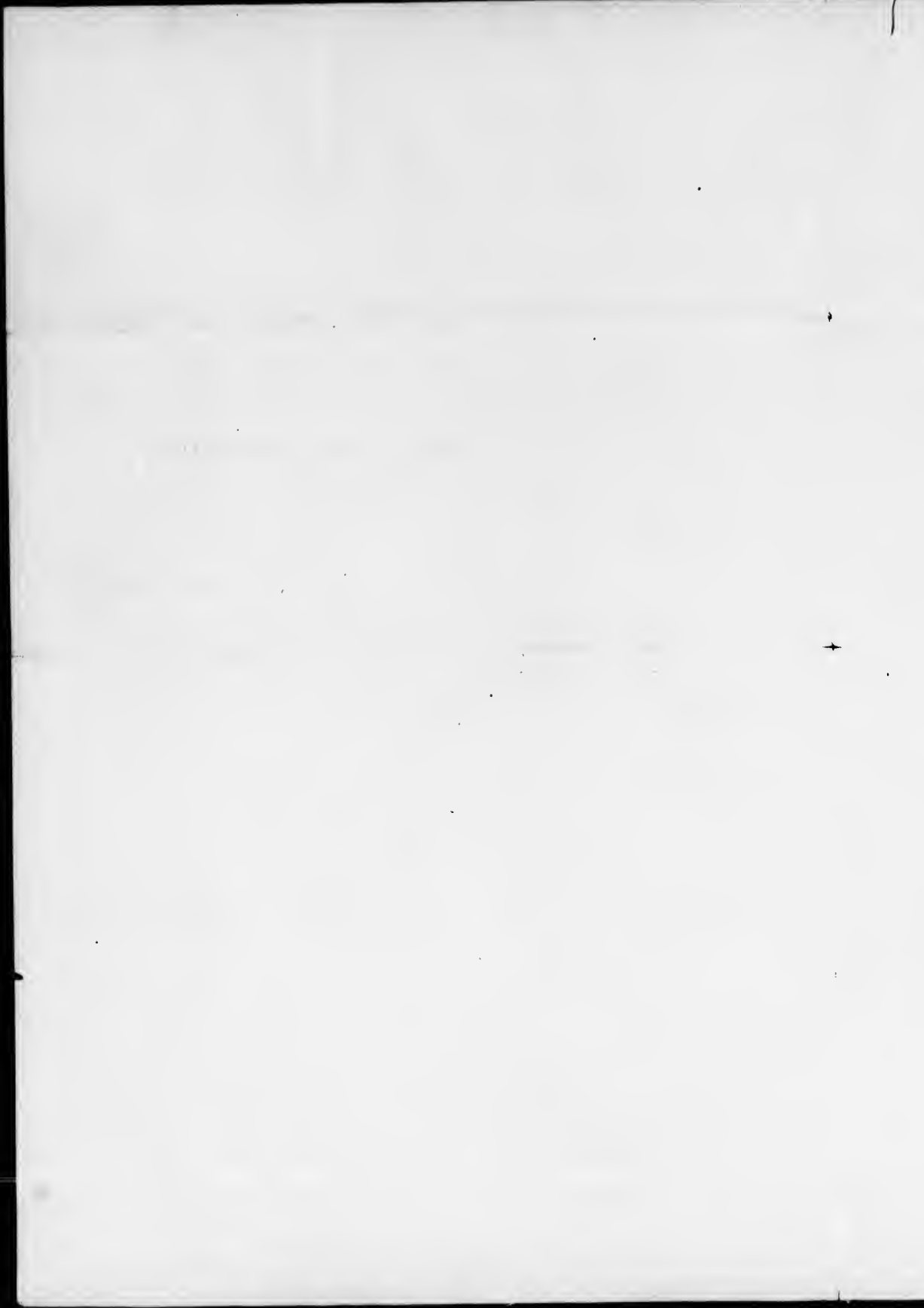
Sir,

*Your most obedient,  
Humble Servant,*

*Joseph Howe*

*The President of  
the Board of Health at*

*Michael*



IN THE HOUSE OF ASSEMBLY,

Saturday, 24th March, 1849.

On motion of the Hon. Mr. Young, *resolved* as follows :

*Whereas*, the demand upon the Treasury on account of Sick Emigrants, cases of Small Pox and Shipwrecked Sailors, have lately increased to such extent as to become a serious burthen upon the Treasury, and it is necessary to introduce additional and more stringent guards upon such expenditures, in order to prevent inaccuracy and to promote economy.

*Resolved*, That before any advances are made from the Treasury for and on account of any expenditures made by the local Board of Health, whether for sick Emigrants or cases of Small Pox, the vouchers setting out the items and details, and Accounts therefor, shall have been previously submitted to the General or Special Sessions of the Peace in the County where such expenditures have been made, in order that the same may be there examined and reported upon—such Report to be forwarded to the Provincial Secretary, and to be deposited in the office of the Treasurer, together with the vouchers, before the Warrant is drawn or paid.

*Resolved*, That all vouchers for such expenditures rendered to such Boards in duplicate be duly attested to—one thereof to be kept by the Board of Health, the other to be forwarded to the office of Provincial Secretary, as aforesaid.

*Resolved*, That in no case shall the advances be made from the Treasury for and on account of such expenditures exceed the proportion of 60 per cent. on the whole, until the said expenditures have been so examined and reported upon by a Committee of this House.

*Resolved*, That no advances shall hereafter be made from the Treasury for and on account of Shipwrecked Sailors, until an affidavit made by one of the Magistrates, advising such advances, is sent forward to the Provincial Secretary, stating the circumstances under which they were made, the name of the vessel, the Master, and the port to which she belongs, together with a copy of the certificate of Registry if the same can be had; and also the vouchers for expenditure forwarded in duplicate, duly attested, setting out the details of such expenditure, and the names of the parties to whom such assistance has been rendered; and further, if any property has been saved from the wreck, duplicate copies of the account, sales, and the appropriation of the nett proceeds.

*Resolved*, That copies of the foregoing Resolutions be printed and transmitted to the Secretaries of the Board of Health, and also to the Clerks of the Peace, in order that the same may be read at the Sessions.

