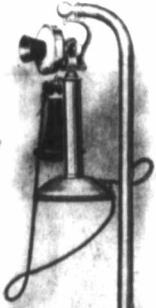


**DOMINION TELEPHONE  
MANUFACTURING COMPANY**  
LIMITED  
**WATERFORD, ONT., CANADA**

CATALOGUE No. 1

**HIGHEST  
QUALITY**

**DOMINION TELEPHONE MANUFACTURING COMPANY**  
LIMITED  
**WATERFORD, ONT., CANADA**



## The Radio



ADJUSTABLE. Flexible Telephone Holder meets ALL requirements and suggests many NEW ones, which are impossible with any other type.

The RADIO is adaptable to any make of desk telephone and can be mounted on ANY style of desk or table, or on the wall or floor.

The RADIO permits one telephone to serve four people without getting up from their desks.

The RADIO is up and off of the desk, out of the way, when not in use.

The RADIO normally holds the telephone proper in a vertical position, yet by an ingenious device the user can tilt it so that the position suits his convenience while using; when released, it automatically resumes its normal or vertical position, the arm remaining at angle desired.

The RADIO makes a wall telephone and a desk telephone one.

If someone wants to use your telephone you do not have to arise from your desk, as would be the case with some other makes that hold the telephone so that it can ONLY be used while sitting.

The RADIO can be used while standing as well as sitting.

The RADIO, while holding the telephone perfectly secure, does not hold it rigidly, but flexibly and always vertically unless user desires it otherwise while using.

The RADIO is never in the way, but always ready for instant service.

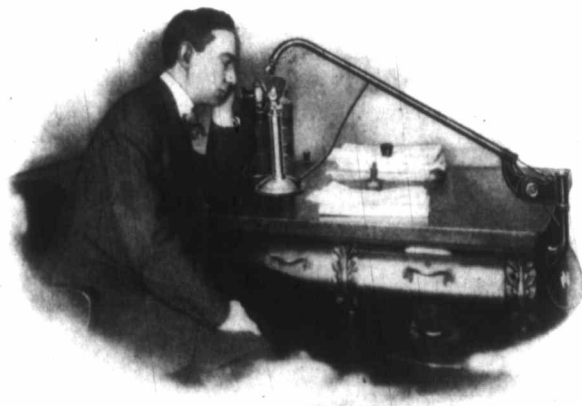
The RADIO will remain at any angle, but can be moved up or down, or in any direction desired with the slightest touch, so perfectly is every part balanced.

The RADIO in simplicity and perfection, has fewer parts than any other telephone holder, is better made and finished, better designed and is of a better appearance; it is a marvel of ingenious invention and meets the instant approval of all who see it. Price, \$4.00 each, ready to attach.

Write for illustrated literature.

Dominion Telephone Manufacturing Company  
Limited

Waterford, Ontario, Canada



# Dominion Telephone Manufacturing Company

LIMITED

---

MANUFACTURERS OF  
HIGHEST QUALITY

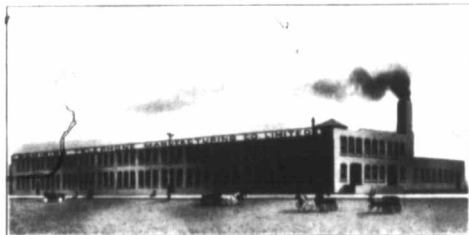
## Telephone Apparatus

TELEPHONES  
SWITCHBOARDS

---

Dominion Telephone Manufacturing  
Company, Limited

Waterford, Ontario, Canada



## Salutatory



OUR first catalog is herewith presented to the Canadian Telephone public.

The first catalog of the first and only bona fide manufacturing company in Canada making *all* of its Telephone and Switchboard apparatus for Independent Companies.

Manufacturing from the raw material under exclusive rights secured from the Swedish-American Telephone Company of Chicago, U. S. A., insuring the highest standard of all telephone and switchboard apparatus.

## Therefore

Upon the above basis and with the additional fact that being the pioneer manufacturers in Canada (not assemblers calling it manufacturing), we solicit the patronage of all Canadian Independents. Canadians for Canada and absolutely the best goods in the world at fair prices consistent with the class of apparatus, merits your patronage.

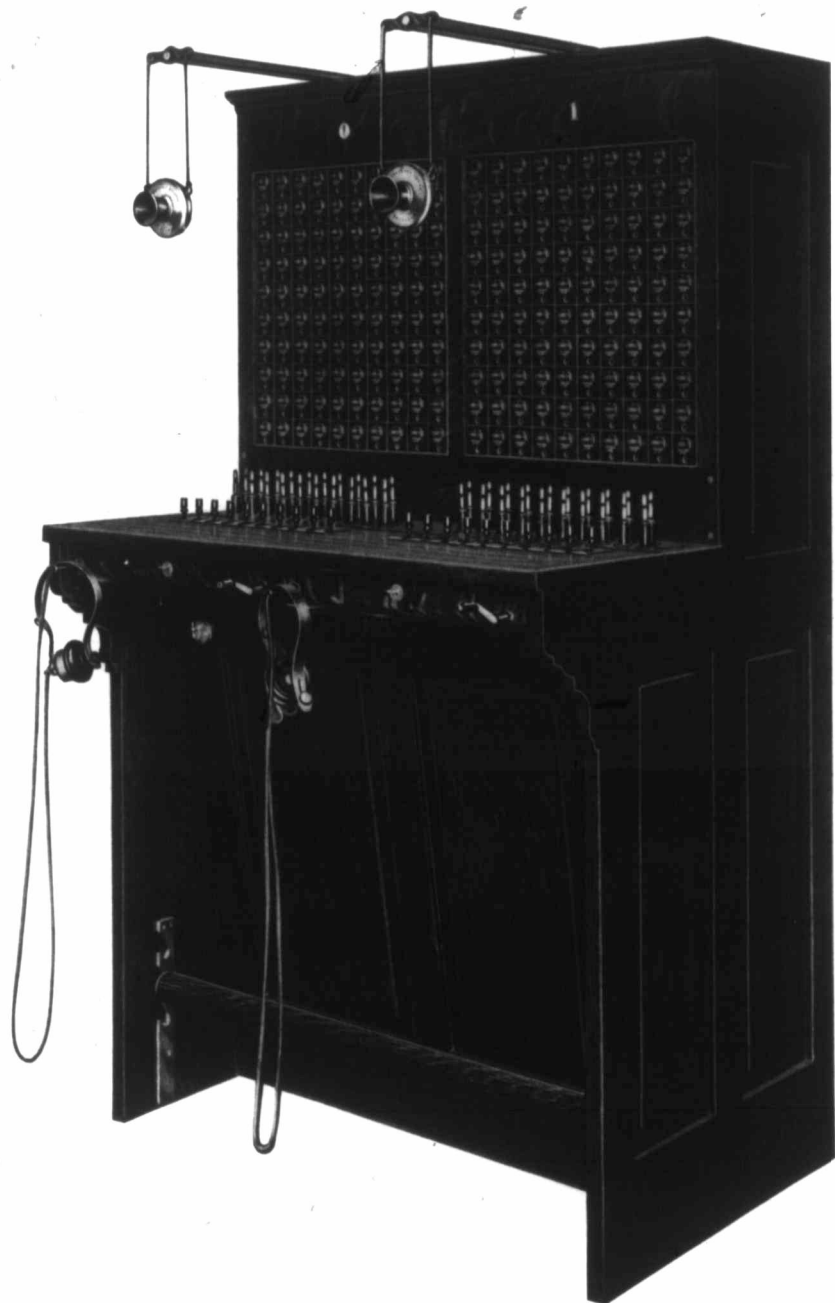
**Dominion Telephone Manufacturing Co., Limited**  
Waterford, Ontario, Can.





No. 300

Desk type toll line or exchange switchboard. Capacity, 100 lines, with 10 complete cord circuits.



No. 301

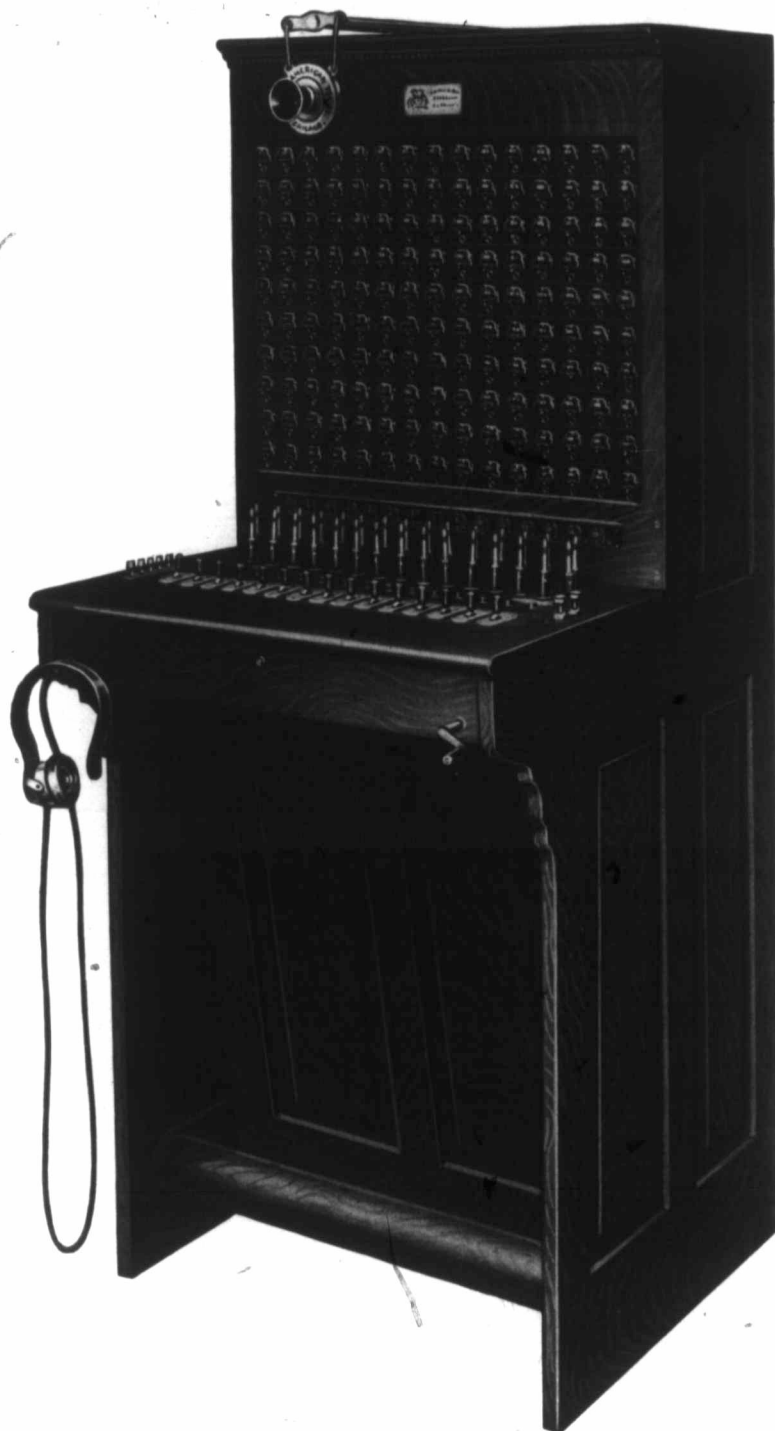
Two hundred line switchboard, with 200 self-contained self-restoring drops and jacks installed; 20 complete cord circuits. See illustration of drop and jack on page 17.



No. 208

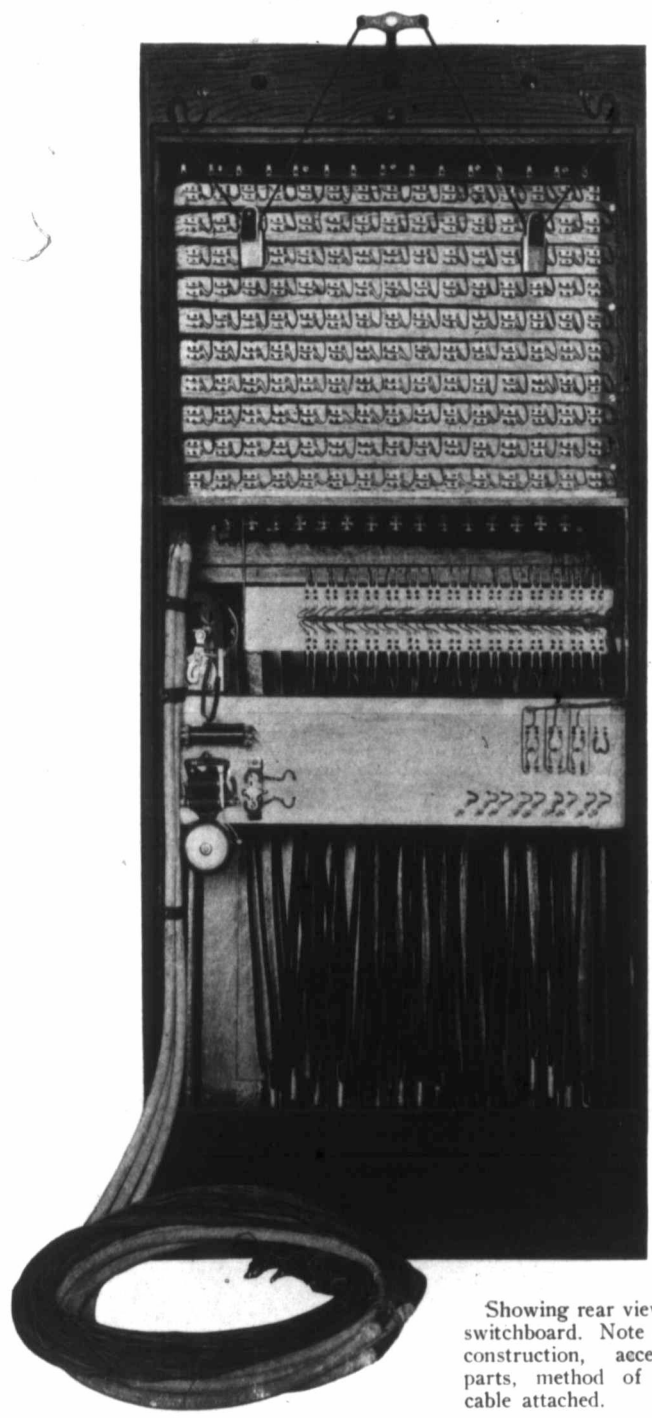
One hundred line switchboard with 100 metallic line combination terminal, carbon and fuse lightning arrester and cross connecting board attached.

ge Six

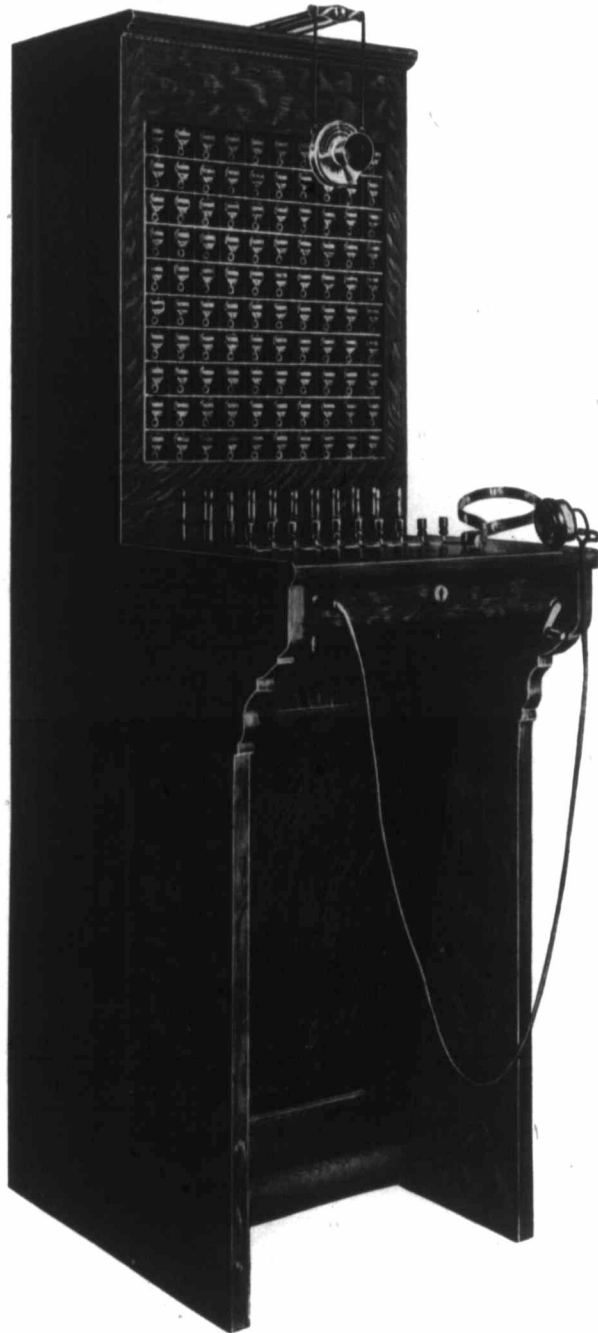


No. 201

One hundred and fifty line capacity switchboard; 15 complete cord circuits; 150 drops and jacks installed. This cabinet is equipped with 4-party selective ringing key.

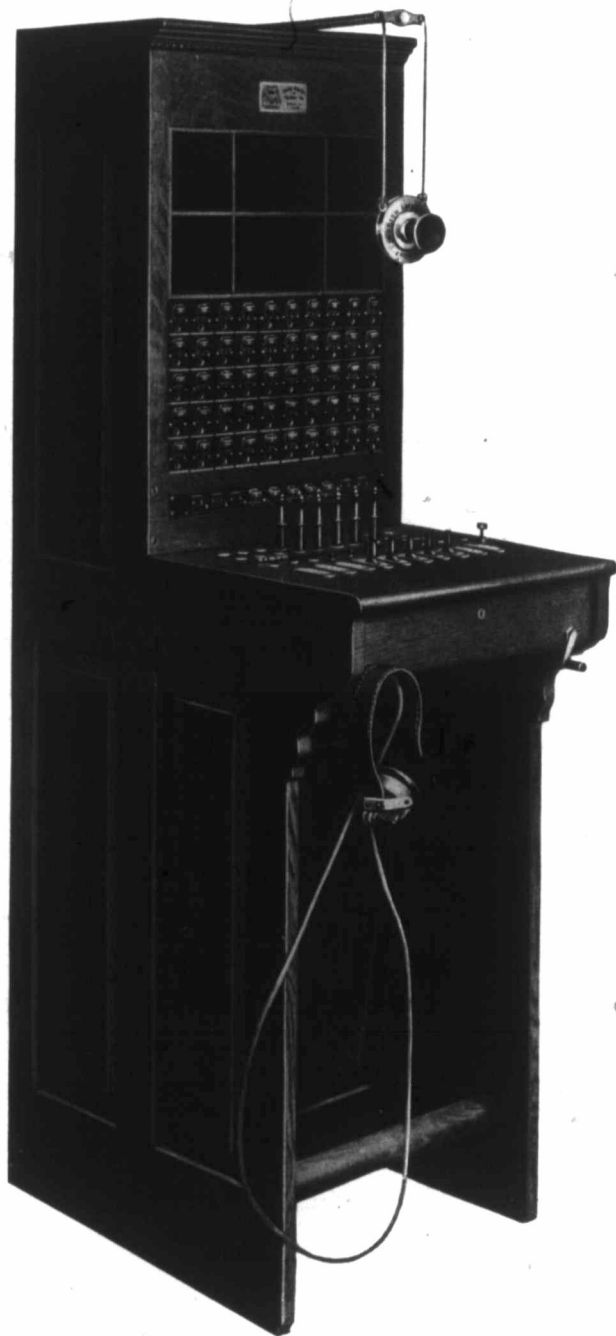


Showing rear view of 150 line switchboard. Note simplicity of construction, accessibility of parts, method of wiring and cable attached.



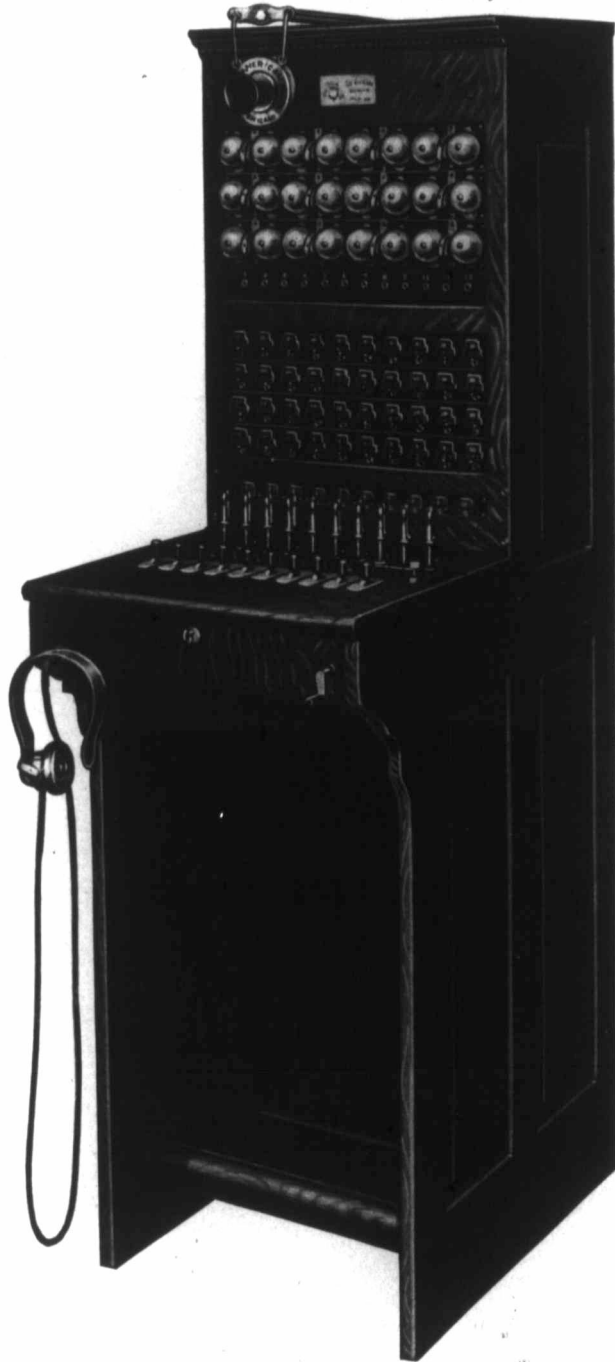
No. 202

One hundred line switchboard with 100 self-contained self-restoring drops and jacks installed; 10 complete cord circuits.



No. 204

One hundred line capacity cabinet wired for 50 metallic lines; 5 complete cord circuits; capacity for six pigeon holes above for toll tickets, etc.



No. 203

Combination exchange and rural line switchboard. Capacity, 40 drops and jacks and 12 ringer movements, or 24 ringer movements. Furnished with desired number of cord circuits up to its capacity of ten.





No. 100

Community line switchboard with 20 line capacity; 2 complete cord circuits (capacity 4). This is an ideal equipment where exchanges desire to establish switching substations. Woodwork either golden oak or mission finish.



No. 205

Capacity, 12 ringer movements, each ringer arranged with red indicating signal; 3 or 5 complete cord circuits. This cabinet illustrated on opposite page with unit type of drops and jacks installed.



No. 205

Capacity, 50 unit type drops and jacks; illustration above shows 40 installed; 5 complete cord circuits. The back panel or door is hinged so that board may be inspected easily and quickly at any time.

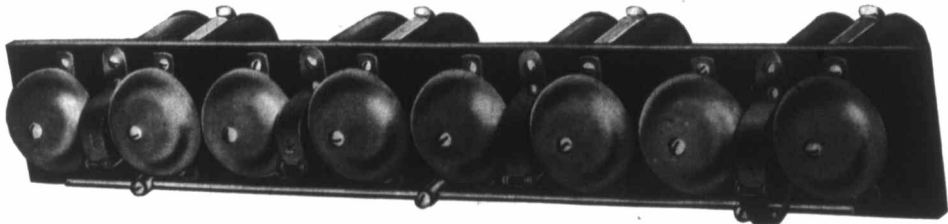


No. 206

This apparatus is designed for rural lines; has a capacity of 15 lines, or can be equipped with 6 ringer movements; has 3 complete cord circuits, equipped with powerful signaling apparatus.



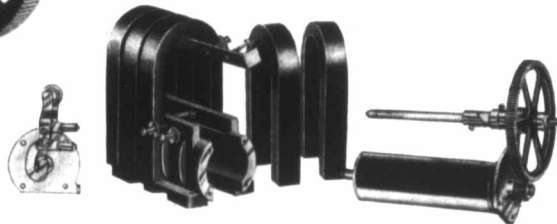
Showing switchboard keyshelf. All contact points are in plain view, not buried in mass of wires.



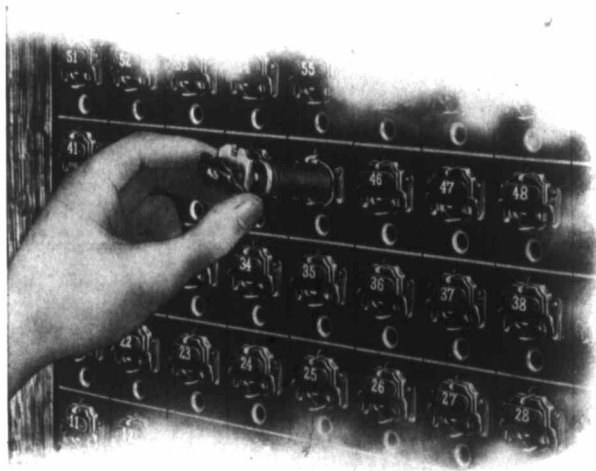
Strip ringer movements as used in our No. 203 switchboard. See page 10.



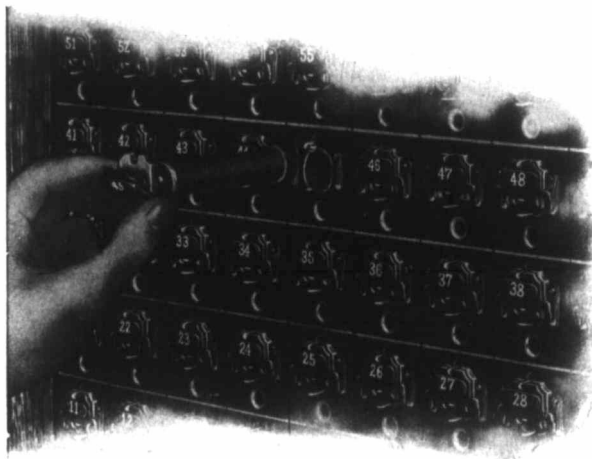
5 bar 100000 ohm bridging generator.



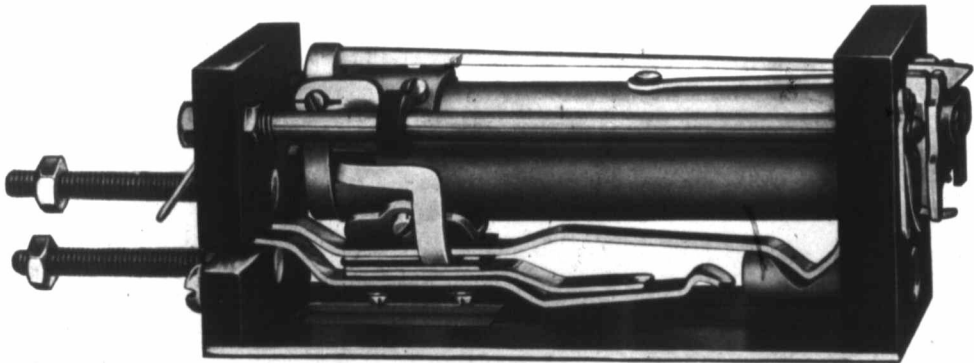
Showing the 5 bar generator in parts.



Showing coil being removed from front of switchboard without the aid of any tools. This is instantly accomplished, and does not in any way disturb any other part of board.



Showing coil removed. Coil cannot be returned to place without making good permanent contact.



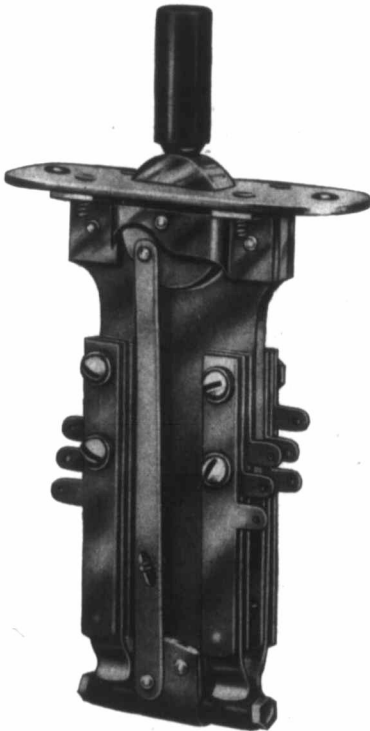
No. 10  
Combined drop and jack, self-contained, self-restoring.



Showing cord connection in plug.



Loose plug sleeve.



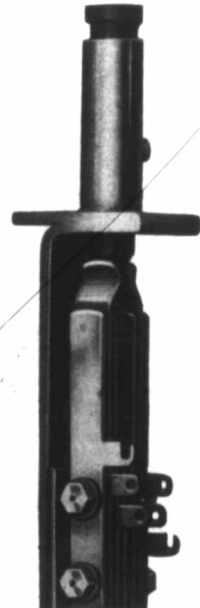
Listening and ringing key.  
Actual size.



Switchboard plug,  
loose sleeve.  
Exact size.



Front view,  
ring back key.



Side view,  
ring back key.

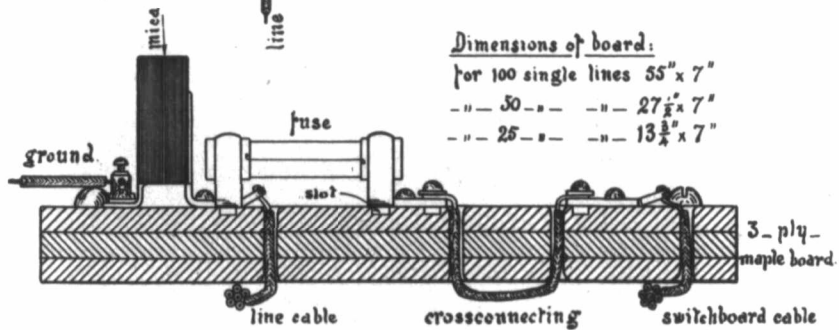
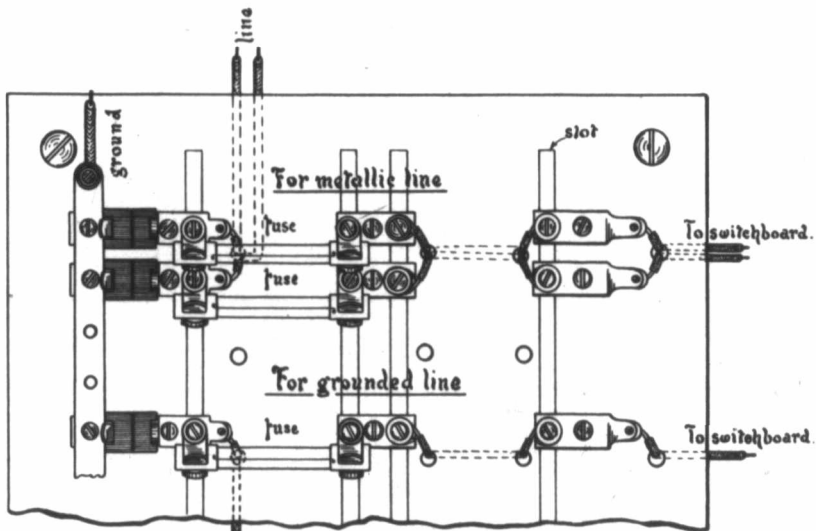


No. 500

Combination terminal board; carbon and fuse lightning arrester, and cross connecting cabinet; has a capacity of 600 single or 300 metallic lines. Parts mounted on 3 ply maple strips; cabinet of quarter-sawed oak; glass door in front; panel door in rear; absolutely dustproof.



Methods of connecting combination  
carbon & fuse lightning arresters for  
metallic and grounded lines.



Dimensions of board:  
 for 100 single lines 55" x 7"  
 " 50 " " 27½" x 7"  
 " 25 " " 13½" x 7"



These two boards furnished to an Illinois company now operating them (name on application). They consist of two 150-line sections with 170 drops installed.

These boards are equipped with our No. 10 mit type drop and jack. See illustration, page 17.

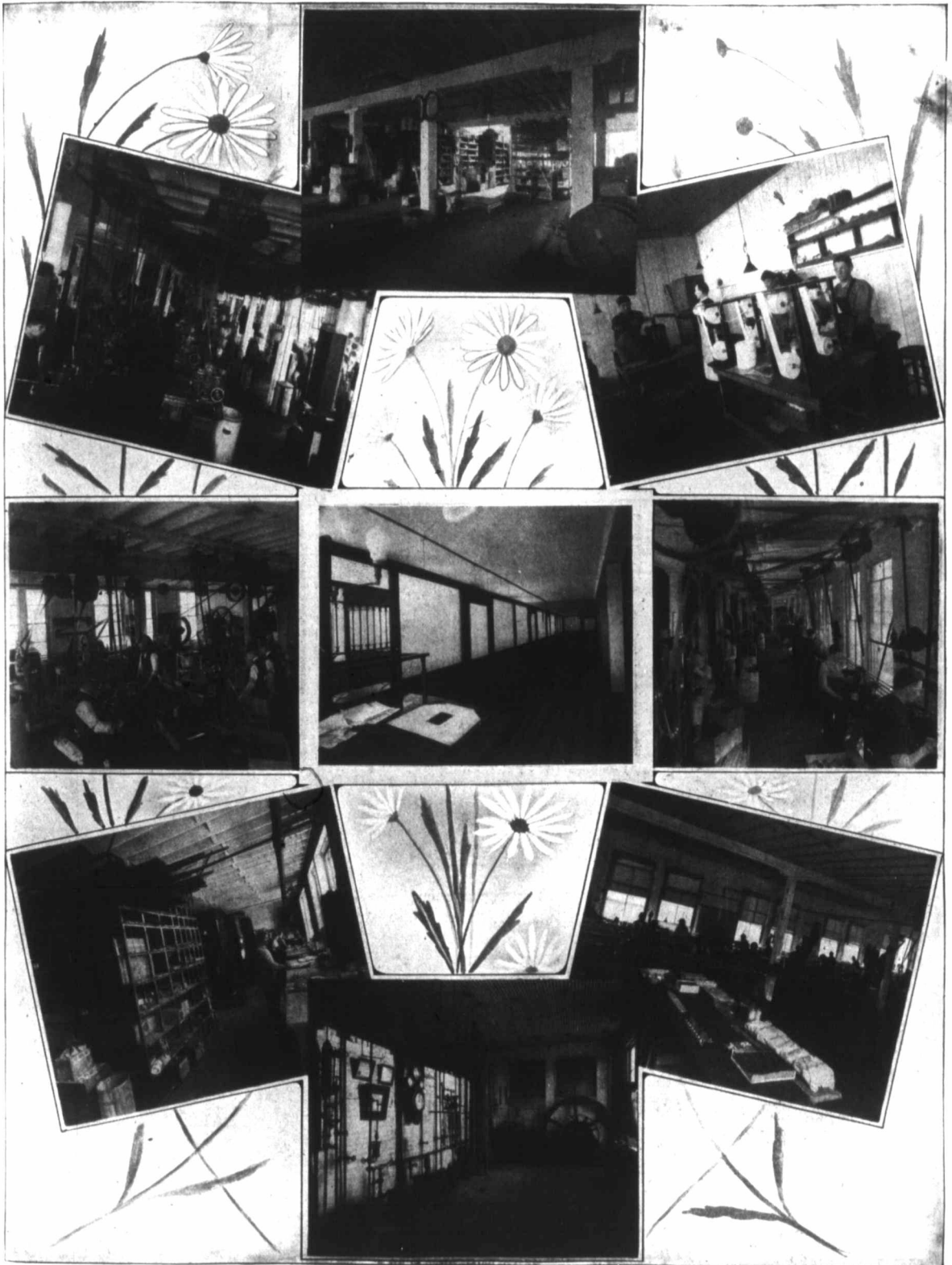




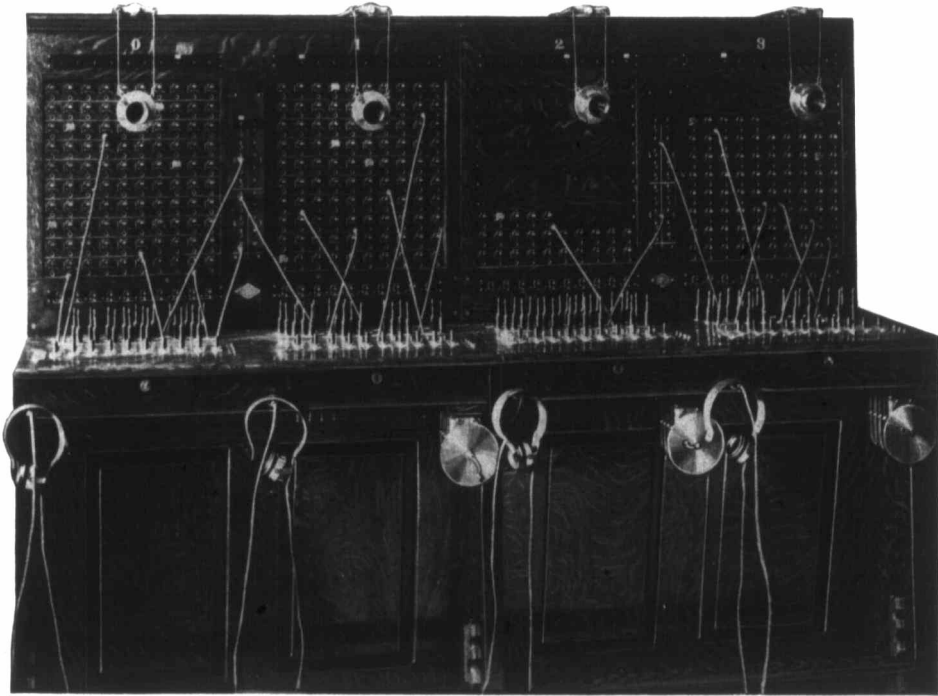
Four hundred and fifty line visual signal transfer magneto switchboard, with 350-unit type self-contained self-restoring drops and jacks installed. This board is being successfully operated by a prosperous independent exchange (name on application).



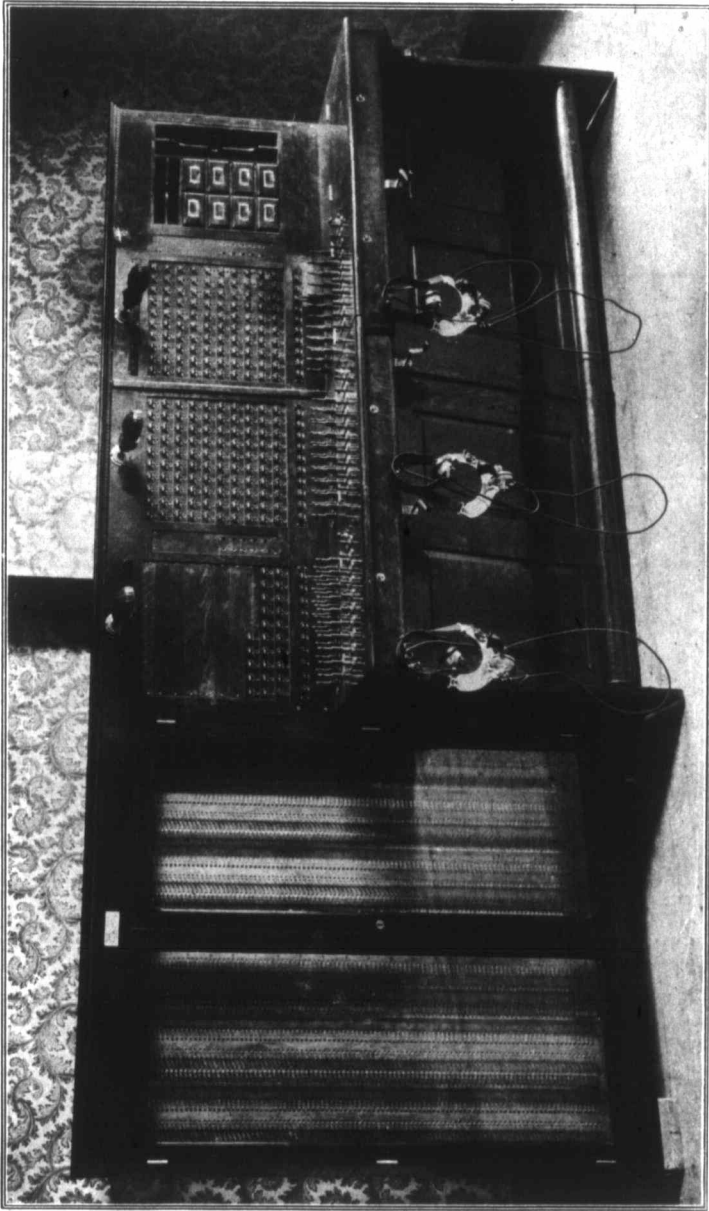
Views in our Factory.



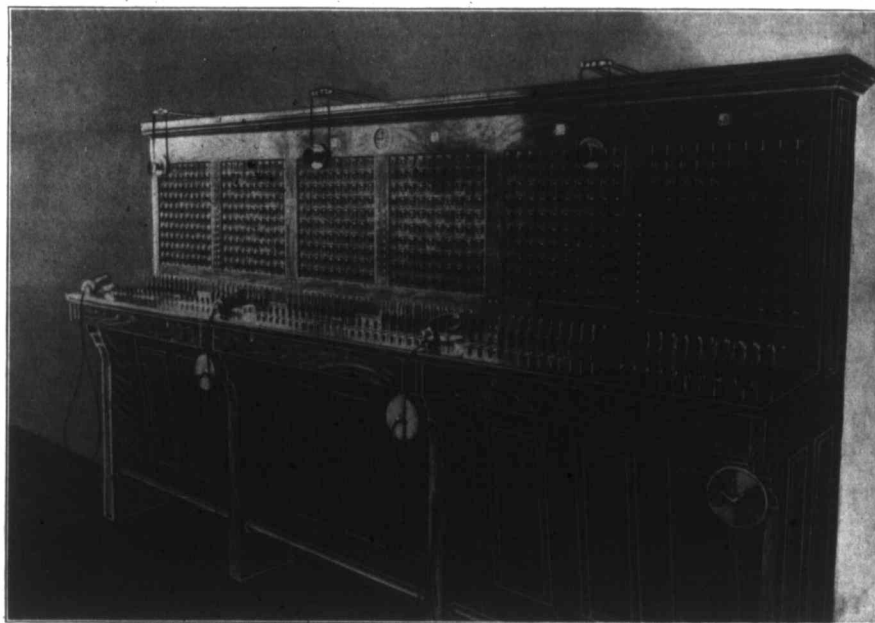
in our Factory.



Four hundred line visual signal transfer magneto switchboard with 300 drops installed, now in use by a prosperous western company (name on application).

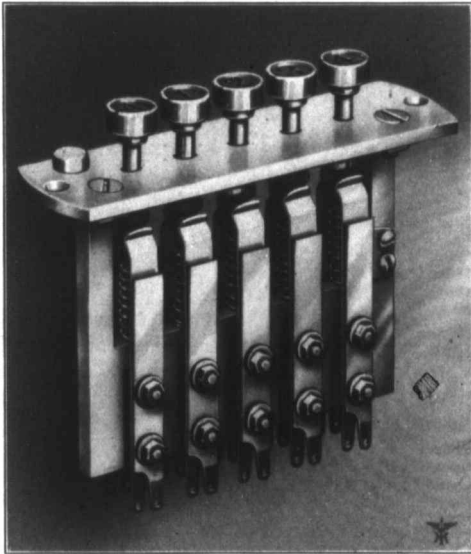


Four hundred line magneto switchboard with 225-unit type drops and jacks installed, with 300 metallic line combination terminal; carbon and fuse lightning arrester and cross connecting cabinet attached. Fourth position is arranged with pigeon holes and provision made for books, records, etc. This board in use by successful Illinois company (name on application).

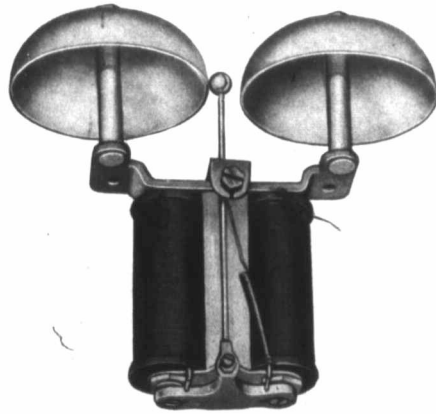


Six hundred line fully equipped lamp transfer magneto switchboard.



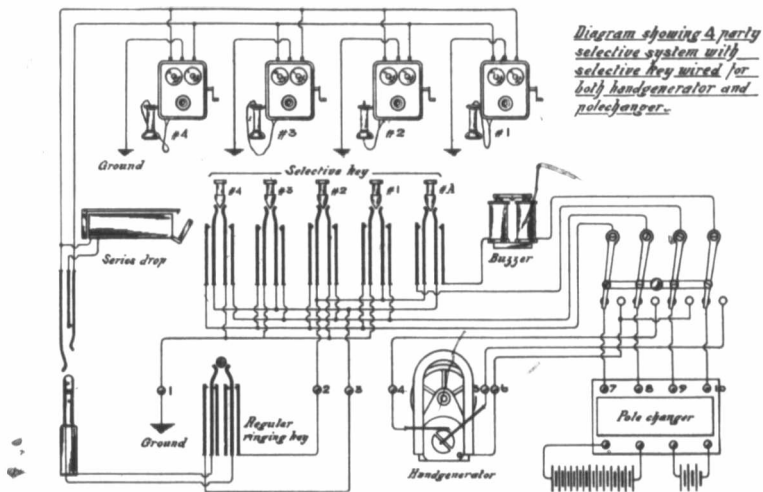


Selective key for party line selective service.

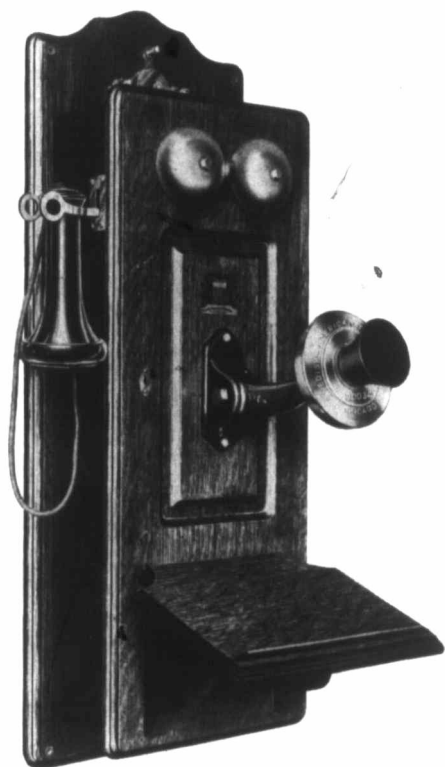


2400 ohm selective ringer.

### Selective Ringing Circuit



Further particulars and price will be submitted promptly on receipt of request.



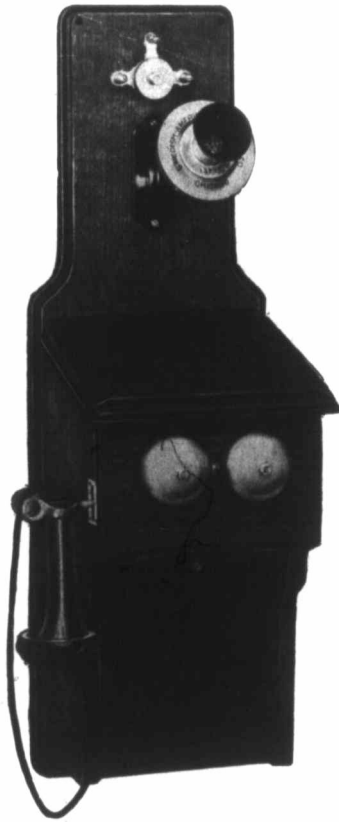
No. 99

This instrument furnished either series or bridging, or any desired circuit that will best meet your exact requirements.



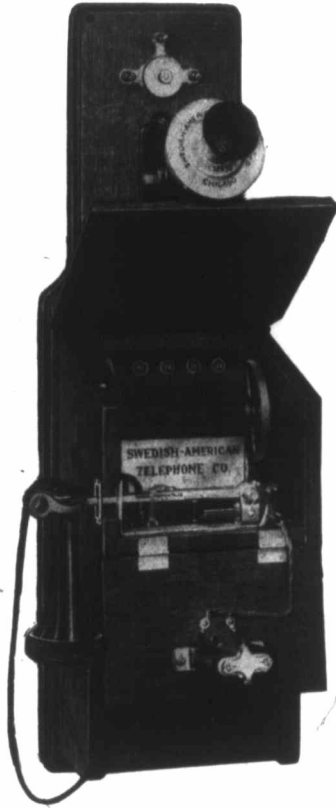
No. 99

Above illustration shows our 5 bar bridging telephone, without doubt the most powerful and lasting telephone on the market. Furnished with 1000, 1600, 2000 or 2500 ohm ringers.



No. 88

Common battery type of magneto telephone, either series or bridging. This telephone is a beauty in design and finish and will meet the demands of the most exacting.



No. 88

Showing the bridging type with 5 bar 100000 ohm generator ; ringers either 1000, 1600, 2000 or 2500 ohms. All parts easy of access.



No. 90—PARLOR SET

This equipment furnished either series, bridging or common battery. Easier and quicker to install than a wall telephone. Telephone fastened permanently to stand or not—optional; a complete instrument, with batteries, lightning arrester, line terminals—all wired ready for service.



No. 90—PARLOR SET

Top of stand hinged so as to make every part of telephone easy of access. The style, finish, material and workmanship are strictly first-class in every respect. The stool shown in cut matches stand, and when not in use can be shoved under stand out of the way. Woodwork of golden oak or mission finish.



No. 70

A desk telephone correctly designed and built. Will give you continuously good service.





Desk equipment, same as shown on pages 32-33, with 3 slot pay station mounted. Ideal for public stations. Operator can hear signals distinctly.



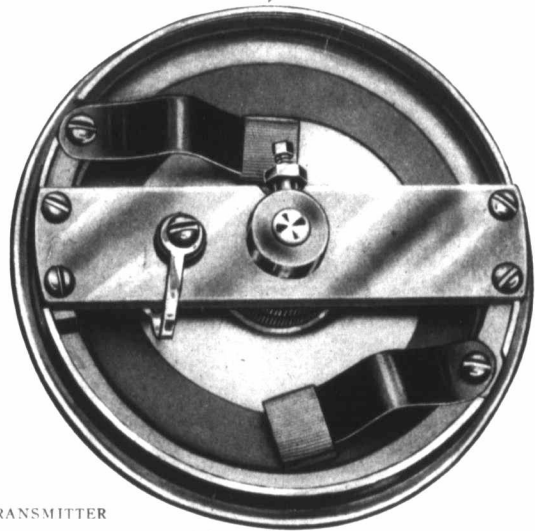
No. 66

Illustrating the most compact and neatest magneto telephone ever designed. Furnished either series or bridging.



No. 66

Note accessibility—all parts in plain view and ready for instant inspection.



No. 4—TRANSMITTER

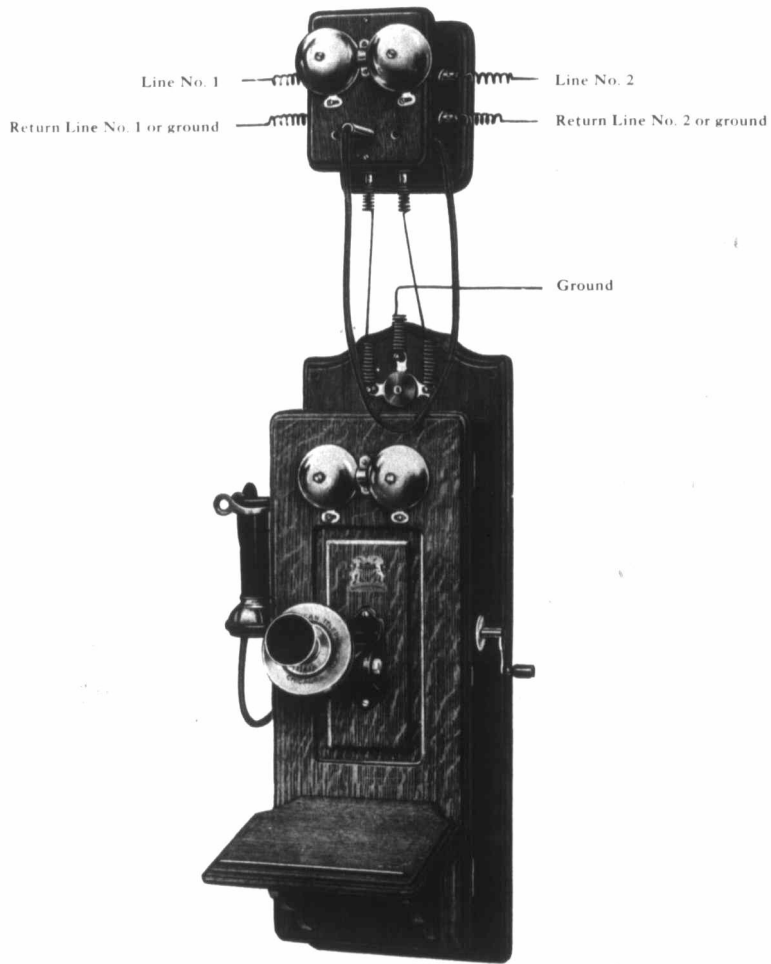
Without question the most popular and reliable local and long distance transmitter on the market.



No. 18—RECEIVER



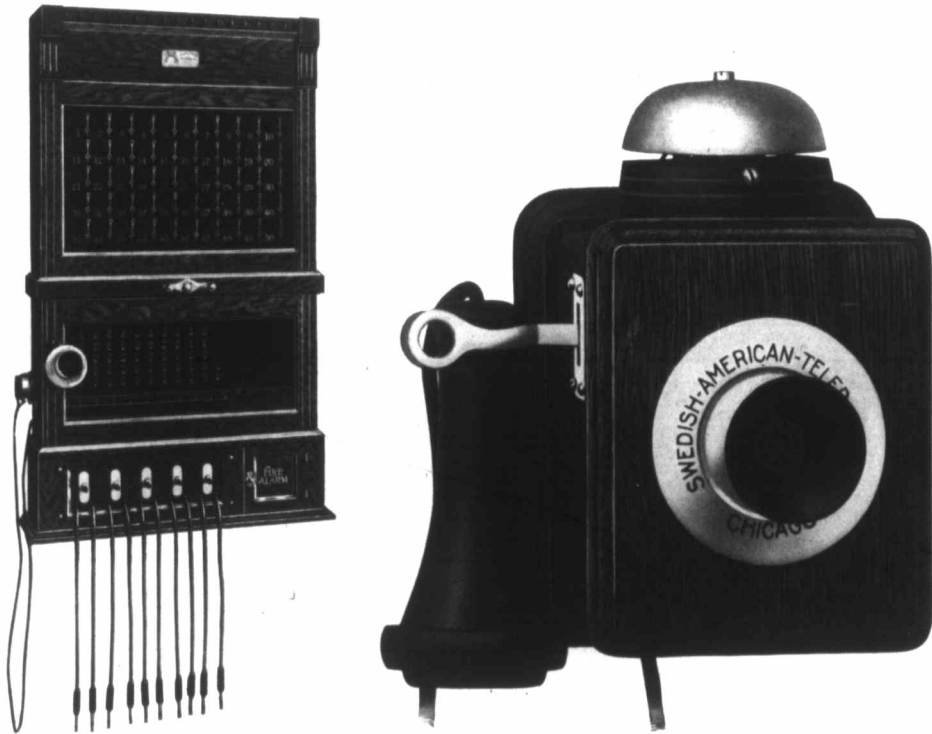
No. 18—RECEIVER  
Disassembled.



No. 99—CENTRAL TELEPHONE.

When the plug is inserted in jack No. 1, the central telephone is connected directly with line No. 1. At the same time any signal from line No. 2 will operate the extension bell. When the plug is inserted in jack No. 3 the central telephone is connected direct with line No. 2, and any signal from line No. 1 will operate extension bell.

When the plug is not inserted in either jack, lines No. 1 and 2 are connected together, with extension bell bridged across the line.



## Private Hotel Telephone System

OF ANY CAPACITY

### With Automatic Fire Alarm Service

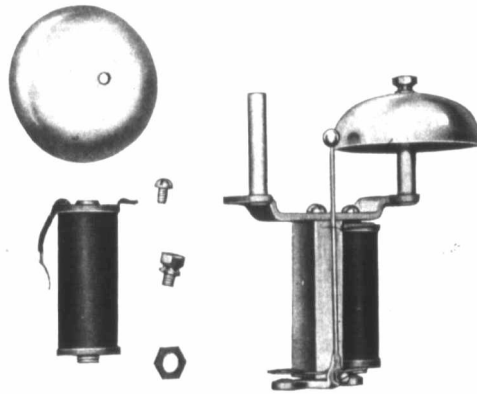
CONNECTION FOR EACH ROOM

All parts of best Long Distance quality and adapted both for private Hotel Service, also arranged for direct connections over Local City exchange and Long Distance Toll Lines.

Furnished under positive guarantee as to efficiency and quality.

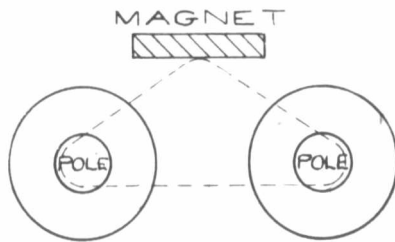
All batteries for operating telephones and Switchboard located at central.

The Annunciator Call can be used for "Bell Boy" service independent from telephone system without change.

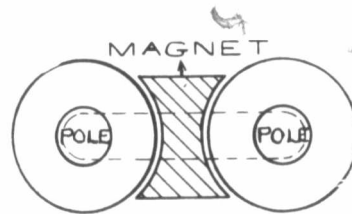


No. 55

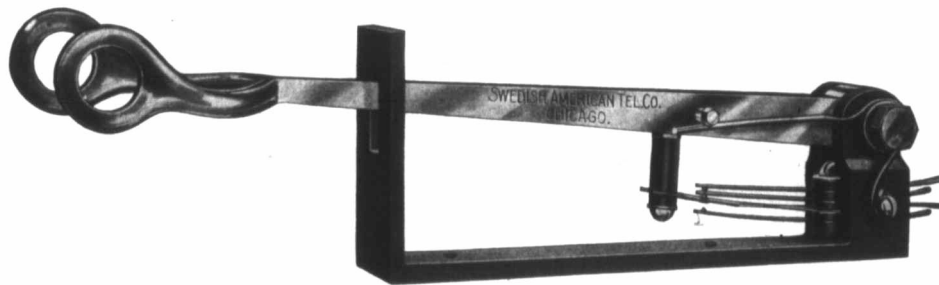
Correctly built ringer. Twenty-five per cent more efficient than any ringer on the market. Fewer parts. More positive adjustment.



Dotted lines show the unbalanced magnetic path of old style ringer with magnet on side.



Dotted lines show a perfect balanced magnetic path of Swedish-American ringer with magnet in center.

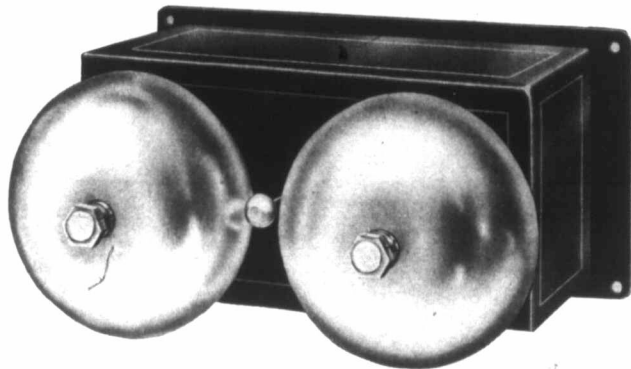


No. 86

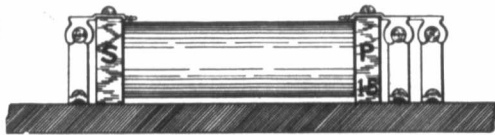
Self-contained switch hook. Neither hook nor frame forms any part of circuit. The adjustment is absolute. Equipped with rubbing contacts, tipped with platinum, set in german silver springs.



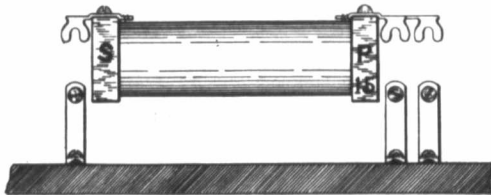
Large carbon disc lightning arrester. Note spring clip binding posts.



Loud ringing, all metal extension bell, equipped with 80, 1000, 1600, 2000 or 2500 ohm ringer.



Induction Coil Mounted

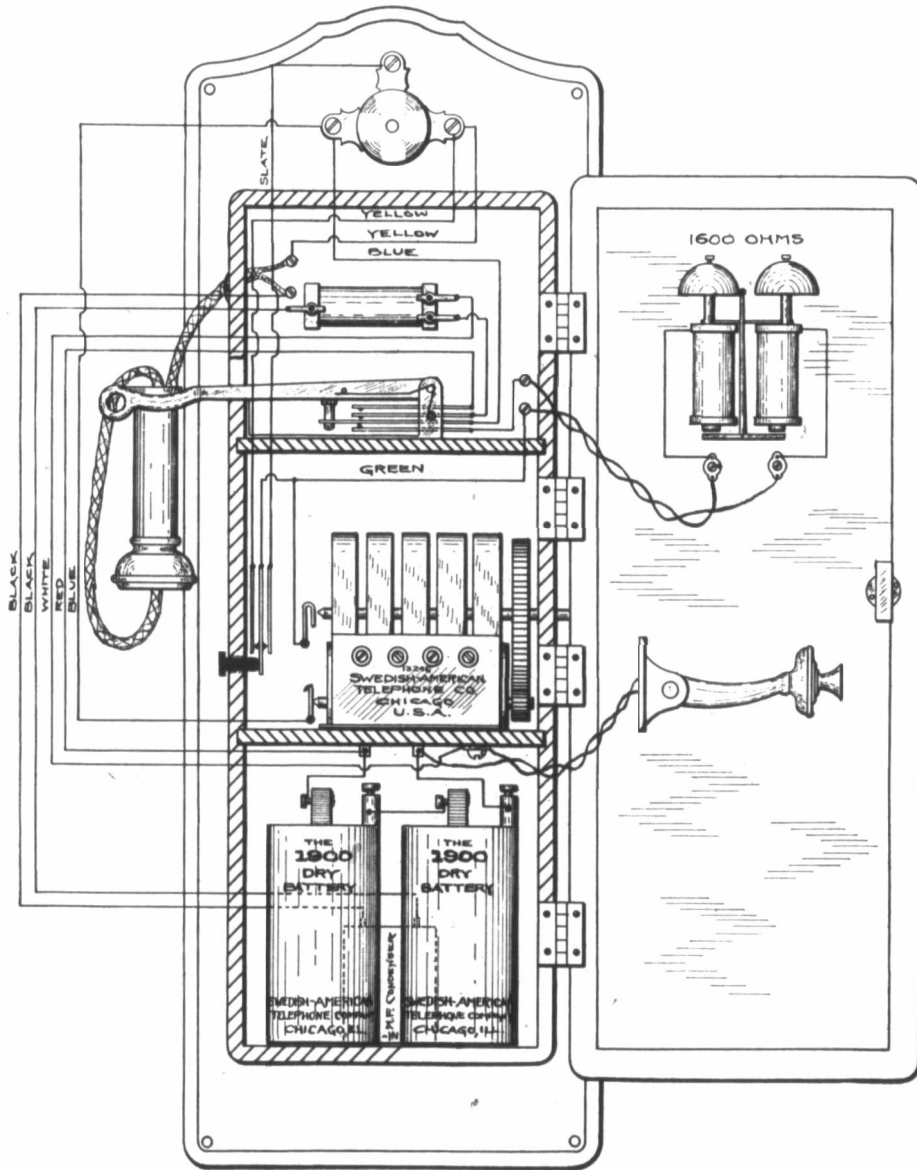


Showing how induction coils are mounted in our telephones; can be removed by releasing 3 screws, as shown.



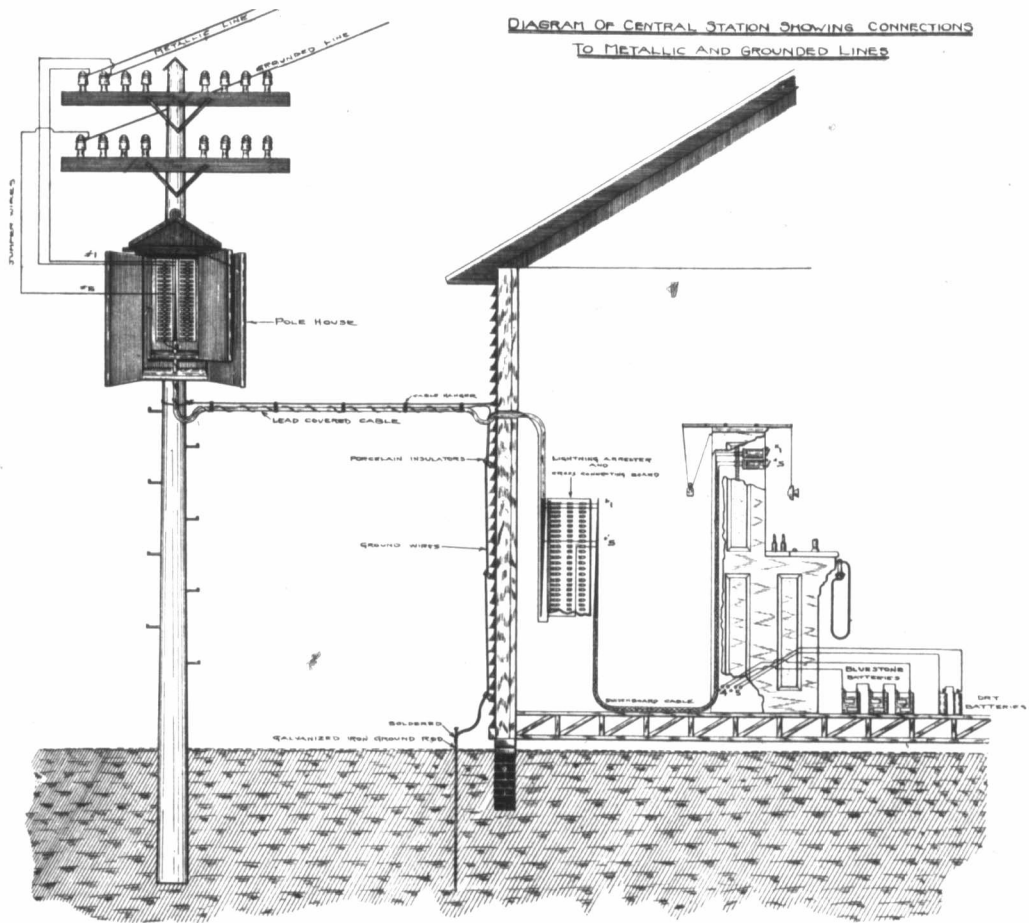
New type ring through condenser. Can be used on any make of bridging telephone.

# WIRING OF No 99 TELEPHONE BRIDGING. WITH CONDENSER AND PUSH BUTTON SPECIAL



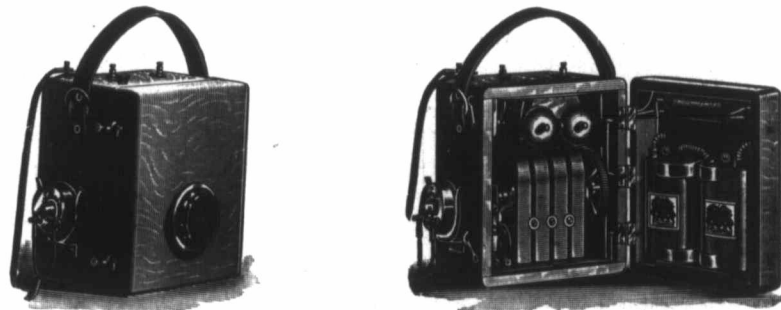
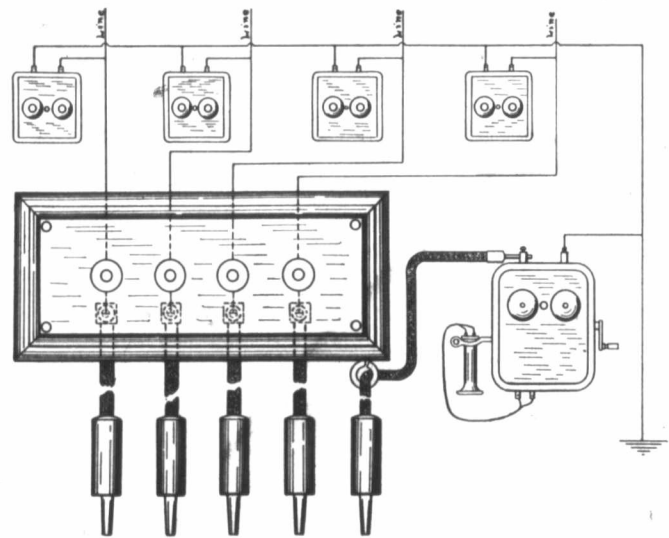
When you call central no other party on your line can hear signal. When you call subscriber you do so without disturbing central. This result is obtained by means of a push button mounted on side of cabinet as above shown. Central gets a signal only when you press the button. Instruments equipped with this device must be used on a metallic line. This instrument is also equipped with condenser, which prevents line being tied up by reason of parties on the line removing their receivers.





Showing method of installing and connecting cable from cable box on pole through lightning arrester board in office to switchboard.

DIAGRAM SHOWING CONNECTIONS FOR 4 POINT PLUG SWITCH TO CENTRAL TELEPHONE



No. 60 Test Set, 4 or 5 bar bridging, with alternating current generator or alternating and direct current generator, with push button. Test for subscriber station or central office without disturbing the other.

Telephone men are cordially invited to visit and inspect our plant. You will be accorded every courtesy and be taken care of personally as well as commercially.

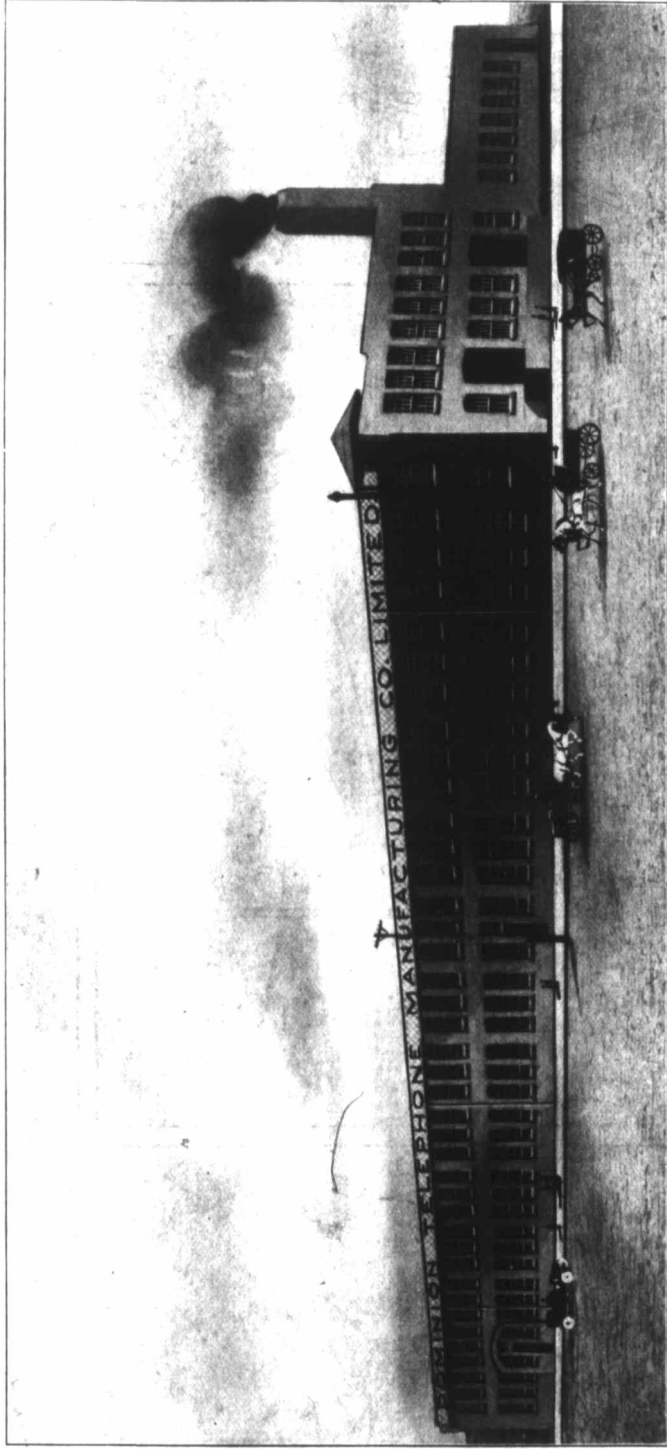
We are supplying many Canadian companies and want to supply you. Our plant is complete and our product is of the highest character. If there is any particular thing you wish to accomplish in Telephone work, communicate with us.

---

---

**Dominion Telephone  
Manufacturing Co., Limited**  
Waterford, Ont.                      Canada

HOME OF QUALITY



Factory owned and operated by us

Dominion Telephone Manufacturing Company  
Limited

Waterford, Ontario, Canada