

**CIHM
Microfiche
Series
(Monographs)**

**ICMH
Collection de
microfiches
(monographies)**



Canadian Institute for Historical Microreproductions / Institut canadien de microreproductions historiques

© 1999

Th
co
ma
th
sig
ch



Thi
Ce

10



Technical and Bibliographic Notes / Notes techniques et bibliographiques

The Institute has attempted to obtain the best original copy available for filming. Features of this copy which may be bibliographically unique, which may alter any of the images in the reproduction, or which may significantly change the usual method of filming are checked below.

L'Institut a microfilmé le meilleur exemplaire qu'il lui a été possible de se procurer. Les détails de cet exemplaire qui sont peut-être uniques du point de vue bibliographique, qui peuvent modifier une image reproduite, ou qui peuvent exiger une modification dans la méthode normale de filmage sont indiqués ci-dessous.

- Coloured covers / Couverture de couleur
- Covers damaged / Couverture endommagée
- Covers restored and/or laminated / Couverture restaurée et/ou pelliculée
- Cover title missing / Le titre de couverture manque
- Coloured maps / Cartes géographiques en couleur
- Coloured ink (i.e. other than blue or black) / Encre de couleur (i.e. autre que bleue ou noire)
- Coloured plates and/or illustrations / Planches et/ou illustrations en couleur
- Bound with other material / Relié avec d'autres documents
- Only edition available / Seule édition disponible
- Tight binding may cause shadows or distortion along interior margin / La reliure serrée peut causer de l'ombre ou de la distorsion le long de la marge intérieure.
- Blank leaves added during restorations may appear within the text. Whenever possible, these have been omitted from filming / Il se peut que certaines pages blanches ajoutées lors d'une restauration apparaissent dans le texte, mais, lorsque cela était possible, ces pages n'ont pas été filmées.
- Additional comments / Commentaires supplémentaires: Pagination is unnumbered. / Il n'existe pas de pagination.

- Coloured pages / Pages de couleur
- Pages damaged / Pages endommagées
- Pages restored and/or laminated / Pages restaurées et/ou pelliculées
- Pages discoloured, stained or foxed / Pages décolorées, tachetées ou piquées
- Pages detached / Pages détachées
- Showthrough / Transparence
- Quality of print varies / Qualité inégale de l'impression
- Includes supplementary material / Comprend du matériel supplémentaire
- Pages wholly or partially obscured by errata slips, tissues, etc., have been refilmed to ensure the best possible image / Les pages totalement ou partiellement obscurcies par un feuillet d'errata, une pelure, etc., ont été filmées à nouveau de façon à obtenir la meilleure image possible.
- Opposing pages with varying colouration or discolourations are filmed twice to ensure the best possible image / Les pages s'opposant ayant des colorations variables ou des décolorations sont filmées deux fois afin d'obtenir la meilleure image possible.

This item is filmed at the reduction ratio checked below /
Ce document est filmé au taux de réduction indiqué ci-dessous.

	10x		14x		18x		22x		26x		30x	
	12x		16x		20x		24x		28x		32x	

The copy filmed here has been reproduced thanks to the generosity of:

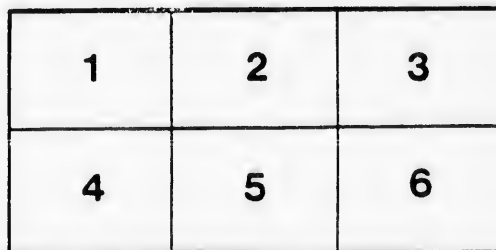
Art Gallery of Ontario
Edward P. Taylor Research Library and Archives

The images appearing here are the best quality possible considering the condition and legibility of the original copy and in keeping with the filming contract specifications.

Original copies in printed paper covers are filmed beginning with the front cover and ending on the last page with a printed or illustrated impression, or the back cover when appropriate. All other original copies are filmed beginning on the first page with a printed or illustrated impression, and ending on the last page with a printed or illustrated impression.

The last recorded frame on each microfiche shall contain the symbol \rightarrow (meaning "CONTINUED"), or the symbol ∇ (meaning "END"), whichever applies.

Maps, plates, charts, etc., may be filmed at different reduction ratios. Those too large to be entirely included in one exposure are filmed beginning in the upper left hand corner, left to right and top to bottom, as many frames as required. The following diagrams illustrate the method:



L'exemplaire filmé fut reproduit grâce à la générosité de:

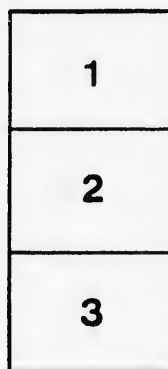
Musée des beaux-arts de l'Ontario
Bibliothèque de recherche et Archives
Edward P. Taylor

Les images suivantes ont été reproduites avec le plus grand soin, compte tenu de la condition et de la netteté de l'exemplaire filmé, et en conformité avec les conditions du contrat de filmage.

Les exemplaires originaux dont la couverture en papier est imprimée sont filmés en commençant par le premier plat et en terminant soit par la dernière page qui comporte une empreinte d'impression ou d'illustration, soit par le second plat, selon le cas. Tous les autres exemplaires originaux sont filmés en commençant par la première page qui comporte une empreinte d'impression ou d'illustration et en terminant par la dernière page qui comporte une telle empreinte.

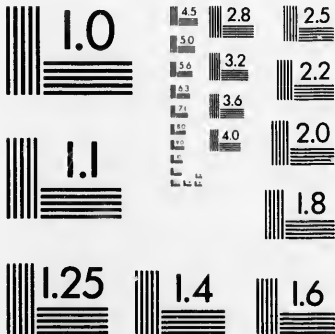
Un des symboles suivants apparaîtra sur la dernière image de chaque microfiche, selon le cas: le symbole \rightarrow signifie "A SUIVRE", le symbole ∇ signifie "FIN".

Les cartes, planches, tableaux, etc., peuvent être filmés à des taux de réduction différents. Lorsque le document est trop grand pour être reproduit en un seul cliché, il est filmé à partir de l'angle supérieur gauche, de gauche à droite, et de haut en bas, en prenant le nombre d'images nécessaire. Les diagrammes suivants illustrent la méthode.



MICROCOPY RESOLUTION TEST CHART

(ANSI and ISO TEST CHART No. 2)



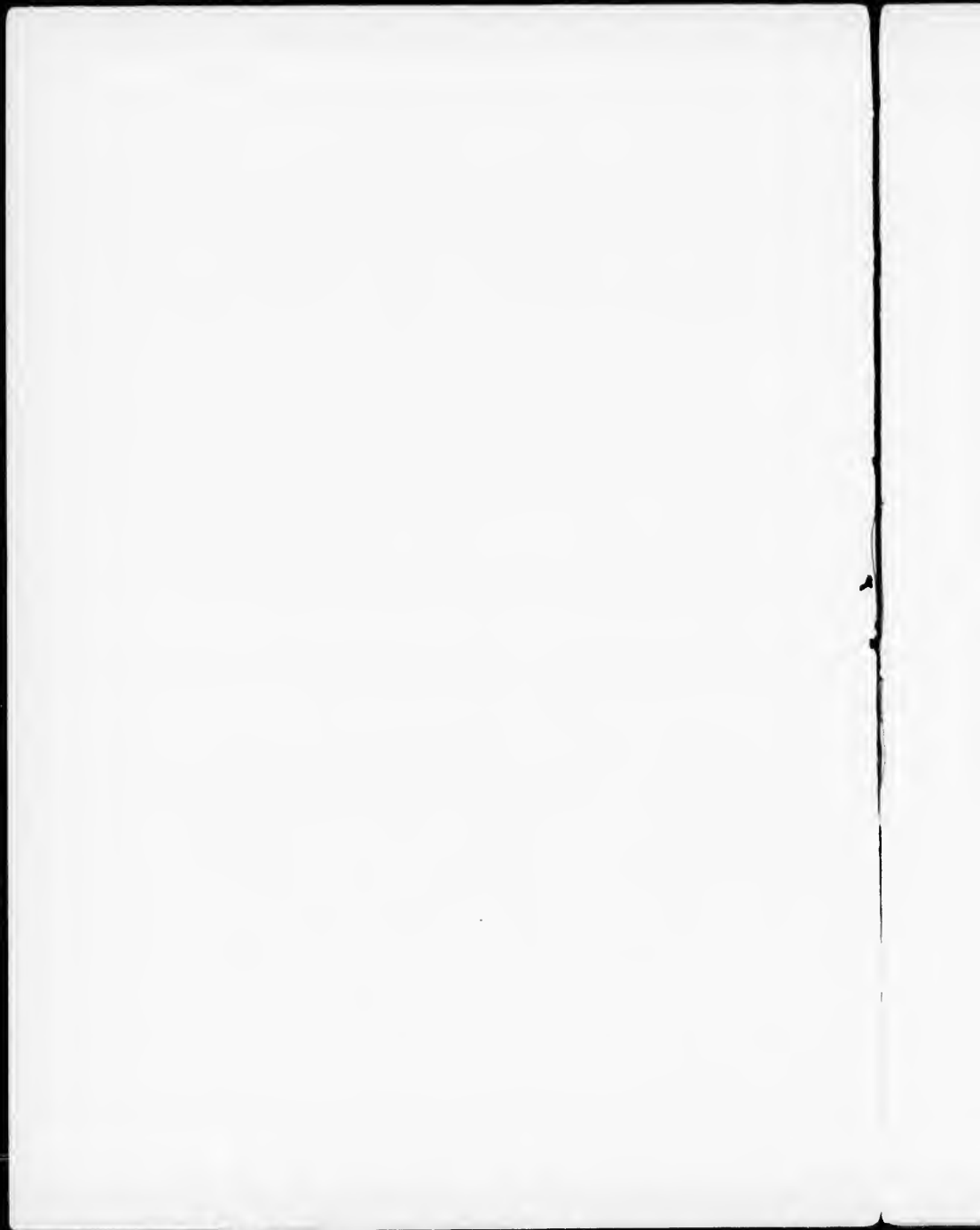
APPLIED IMAGE Inc

1653 East Main Street
Rochester, New York 14609 USA
(716) 482 - 0300 - Phone
(716) 288 - 5989 - Fax

CATALOGUE
OF PAINTINGS
by **L.R. OBRIEN**
R.C.A.

To be sold at the
Auction Rooms of
C.J. Townsend &
C^o on Wednesday
May 10th 1899
at 2 o'clock P.M.

On view in the
Gallery on Saturday
May 6th & following
days.



TORONTO, May, 1899

E extend to you an invitation to see an exhibition of Mr. L. R. O'Brien's paintings, including his latest and best, in our new gallery, 28 King St. West, opening on Saturday, May 6th, and continuing until the Wednesday following at 2 o'clock p.m., when the whole collection will be sold without reserve; except in the case of those few pictures for which an upset price is given in the Catalogue.

To the feeling of an artist. Mr. O'Brien adds the instinct of a decorator. Besides the main motive of subject, incident, or effect, a picture has a secondary value as a decorated panel, in which aspect the frame bears a not unimportant part. It is the setting of the gem which may not add to, but should support its lustre. Acting upon this idea, Mr. O'Brien carefully considers the design of every frame in relation to the picture it encloses. How far he succeeds in this will be judged by the present exhibition.

C. J. TOWNSEND & CO.
AUCTIONEERS





No 1

on The Rampart
Quebec.

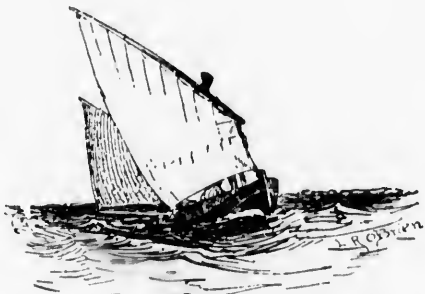
L. ROBINS

CATALOGUE

- 1 On the Rampart, Quebec.
- 2 A Sketch on Pelee Island, 1874.
- 3 Fishing Boats on Grand Manan, 1878.
- 4 Sunset on Georgian Bay.
- 5 Manor House at Riviere Ouelle, 1882.
- 6 Sketch for panel of Roses.
- 7 Lime Kilns near Dundas.
- 8 Thorn Trees in the Valley of the Don.
- 9 Kingston from road to Fort Henry.
- 10 A Clovelly Herring-Boat.
- 11 A Bluff on the Georgian Bay.
- 12 June.
- 13 On Lake Simcoe, fifty years ago.
(Upset price, \$95.)
- 14 Irish Channel, off St. Ives.
- 15 Mount Tracadegash, Bay Chaleur.
- 16 A Study of Yellow.

CATALOGUE

- 17 Suburb of St. Roch, Quebec.
(Upset price, \$20.)
- 18 Mount Intchekoi, British Columbia.
- 19 Spray of Roses.
- 20 Early Morning on Bideford Bay.
- 21 On the River Severn.
- 22 Falls of Montmorenci, Quebec.
- 23 Lake Ontario, from Scarboro Heights.
- 24 Scarboro Heights, looking Eastward.
- 25 Yellow Chrysanthemums.
(Upset price, \$50.)
- 26 Chrysanthemums.
- 27 Intervale Meadows, St. John River.
- 28 Wreckage, St. John, N.B.
- 29 The Long Reach, St. John River.
- 30 The Heart of Niagara.
(Upset price, \$100.)
- 31 Sketch on the Cataract, Niagara.
- 32 Fishing Fleet on George's Bank.
- 33 Oat Harvest.
- 34 A Summer Afternoon.



No. 10. Clovelly Herring Boat.



Fragment of No. 31. Fishing Fleet on Georges Banks.



Mt Shasta

No 50

ENOBrien

CATALOGUE

- 35 Evening on Lake Tadenac.
(Upset price, \$20.)
- 36 On Lake Tadenac.
- 37 Quebec from Island of Orleans.
- 38 The White Cliffs of Dover.
- 39 Valley of the Coaticook.
- 40 The River Speed, near Preston.
- 41 A Gleam of Gold.
(Upset price, \$40.)
- 42 In High Park.
- 43 Laurentian Islands, Georgian Bay.
- 44 Canterbury.
- 45 Yellow and Pink.
- 46 October, a Colour Study.
- 47 Wing and Wing.
- 48 A Gleam of Sunshine, Grand Manan.
(Upset price, \$110.)
- 49 Solitude.
(Upset price, \$180.)
- 50 Cloudland.
- 51 In the Credit Valley.
- 52 An Unnamed Port.

CATALOGUE

53 Mount Shasta.

(Upset price, \$150.)

54 Across the Valley.

55 Rye and Winchelsea.

56 A Bend of the Humber.

57 Backwater of St. John River.

58 Near Whitby.

59 A Winter Morning.

60 An Evening Glow.

61 Cape Gaspè.

(Upset price, \$250.)

Gaspè light, perched on a projecting cliff 500 feet above the sea which breaks on the beach below, is a striking feature in the navigation of the Gulf of St. Lawrence. When shrouded in mist, as is often the case, a steam whistle gives warning to approaching vessels.

62 A Misty Morning, Return of the Fishing Fleet.

63 Wild Waters above the Horseshoe, Niagara.

64 Towing Barges, Hudson River.

65 Bloor Street West, by High Park.

66 Maritime Canada, St. John, N.B.

(Upset price, \$90.)



CATALOGUE

- 67 An Outlook.
(Upset price, \$40.)
- 68 The Skirt of the Pine Wood.
- 69 Ka Washago, Falls of the Clear Water.
- 70 At Rose Point.
- 71 Evening.
- 72 Sunny Meadows, Kennibunk Port, Me.
- 73 A Breezy Day in Dundas Valley.
- 74 Afternoon in Dundas Valley.
- 75 Yellow Roses.
- 76 On the River St. John, N.B.
- 77 Homeward Bound.
- 78 On the Humber.
- 79 Shades of Evening.
- 80 A Gorge of the Severn.
- 81 From Parry Sound to Rose Point.
- 82 Parry Sound from Rose Point.
- 83 In the Woods, an Unexpected Bit.
- 84 Lake Rosseau.
- 85 Harvesting.

CATALOGUE

- 86 Under a Cloud.
87 Tadenac Club House, Georgian Bay.
88 Salt Marshes on Coast of Maine.
89 On Reservoir Creek.
90 Fishing Boats on Georgian Bay.
91 Haymaking, Collingwood.
92 At Kennibunk Port, Me.
93 On the Edge of the Cliff.
94 By Grass Lake.
95 Brick Kilns on the Don.
96 A Farm at Whitby.
97 Wood Boats on the St. John River.
98 Overlooking Lake Ontario.
99 A Passing Shower.
100 Sunset on Lake Huron.
101 On Georgian Bay.
102 Sketch on Lower St. Lawrence, 1878.

