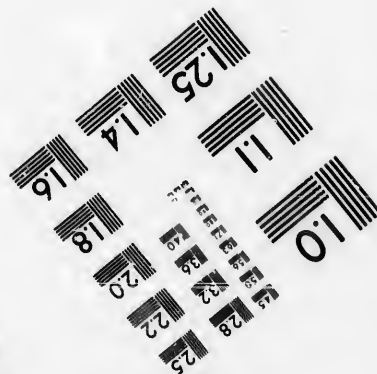
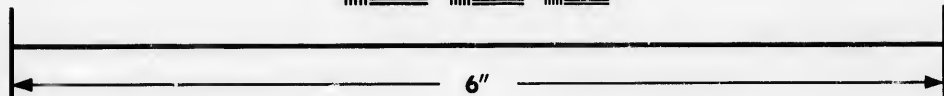
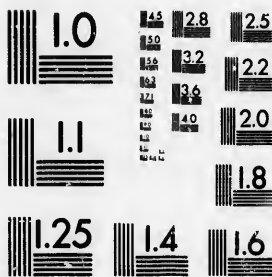


**IMAGE EVALUATION
TEST TARGET (MT-3)**



**Photographic
Sciences
Corporation**

23 WEST MAIN STREET
WEBSTER, N.Y. 14580
(716) 872-4503

1.5 2.8 2.5
1.6 3.2
1.8 3.6 2.2
2.0

**CIHM/ICMH
Microfiche
Series.**

**CIHM/ICMH
Collection de
microfiches.**



Canadian Institute for Historical Microreproductions / Institut canadien de microreproductions historiques

1.5 1.6 1.8 2.0 2.2 2.5 2.8 3.2 3.6

© 1986

Technical and Bibliographic Notes/Notes techniques et bibliographiques

The Institute has attempted to obtain the best original copy available for filming. Features of this copy which may be bibliographically unique, which may alter any of the images in the reproduction, or which may significantly change the usual method of filming, are checked below.

L'Institut a microfilmé le meilleur exemplaire qu'il lui a été possible de se procurer. Les détails de cet exemplaire qui sont peut-être uniques du point de vue bibliographique, qui peuvent modifier une image reproduite, ou qui peuvent exiger une modification dans la méthode normale de filmage sont indiqués ci-dessous.

- | | |
|---|---|
| <input type="checkbox"/> Coloured covers/
Couverture de couleur | <input type="checkbox"/> Coloured pages/
Pages de couleur |
| <input type="checkbox"/> Covers damaged/
Couverture endommagée | <input type="checkbox"/> Pages damaged/
Pages endommagées |
| <input type="checkbox"/> Covers restored and/or laminated/
Couverture restaurée et/ou pelliculée | <input type="checkbox"/> Pages restored and/or laminated/
Pages restaurées et/ou pelliculées |
| <input type="checkbox"/> Cover title missing/
Le titre de couverture manque | <input checked="" type="checkbox"/> Pages discoloured, stained or foxed/
Pages décolorées, tachetées ou piquées |
| <input type="checkbox"/> Coloured maps/
Cartes géographiques en couleur | <input type="checkbox"/> Pages detached/
Pages détachées |
| <input type="checkbox"/> Coloured ink (i.e. other than blue or black)/
Encre de couleur (i.e. autre que bleue ou noire) | <input type="checkbox"/> Showthrough/
Transparence |
| <input type="checkbox"/> Coloured plates and/or illustrations/
Planches et/ou illustrations en couleur | <input type="checkbox"/> Quality of print varies/
Qualité inégale de l'impression |
| <input type="checkbox"/> Bound with other material/
Relié avec d'autres documents | <input type="checkbox"/> Includes supplementary material/
Comprend du matériel supplémentaire |
| <input type="checkbox"/> Tight binding may cause shadows or distortion along interior margin/
La reliure serrée peut causer de l'ombre ou de la distorsion le long de la marge intérieure | <input type="checkbox"/> Only edition available/
Seule édition disponible |
| <input type="checkbox"/> Blank leaves added during restoration may appear within the text. Whenever possible, these have been omitted from filming/
Il se peut que certaines pages blanches ajoutées lors d'une restauration apparaissent dans le texte, mais, lorsque cela était possible, ces pages n'ont pas été filmées. | <input type="checkbox"/> Pages wholly or partially obscured by errata slips, tissues, etc., have been refilmed to ensure the best possible image/
Les pages totalement ou partiellement obscurcies par un feuillet d'errata, une pelure, etc., ont été filmées à nouveau de façon à obtenir la meilleure image possible. |
| <input checked="" type="checkbox"/> Additional comments:/
Commentaires supplémentaires: | [Printed ephemera] [4] p. |

This item is filmed at the reduction ratio checked below/
Ce document est filmé au taux de réduction indiqué ci-dessous.

10X	12X	14X	16X	18X	20X	22X	24X	26X	28X	30X	32X
			/								

The copy filmed here has been reproduced thanks to the generosity of:

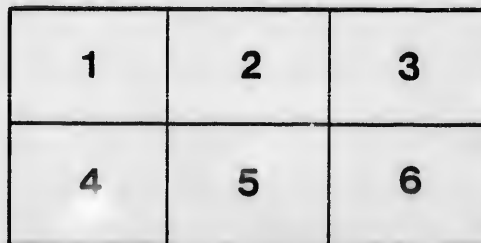
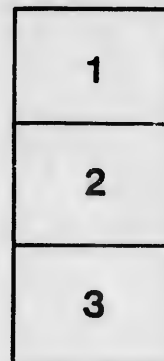
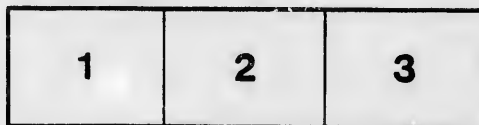
D. B. Weldon Library
University of Western Ontario
(Regional History Room)

The images appearing here are the best quality possible considering the condition and legibility of the original copy and in keeping with the filming contract specifications.

Original copies in printed paper covers are filmed beginning with the front cover and ending on the last page with a printed or illustrated impression, or the back cover when appropriate. All other original copies are filmed beginning on the first page with a printed or illustrated impression, and ending on the last page with a printed or illustrated impression.

The last recorded frame on each microfiche shall contain the symbol \rightarrow (meaning "CONTINUED"), or the symbol ∇ (meaning "END"), whichever applies.

Maps, plates, charts, etc., may be filmed at different reduction ratios. Those too large to be entirely included in one exposure are filmed beginning in the upper left hand corner, left to right and top to bottom, as many frames as required. The following diagrams illustrate the method:



L'exemplaire filmé fut reproduit grâce à la générosité de:

D. B. Weldon Library
University of Western Ontario
(Regional History Room)

Les images suivantes ont été reproduites avec le plus grand soin, compte tenu de la condition et de la netteté de l'exemplaire filmé, et en conformité avec les conditions du contrat de filmage.

Les exemplaires originaux dont la couverture en papier est imprimée sont filmés en commençant par le premier plat et en terminant soit par la dernière page qui comporte une empreinte d'impression ou d'illustration, soit par le second plat, selon le cas. Tous les autres exemplaires originaux sont filmés en commençant par la première page qui comporte une empreinte d'impression ou d'illustration et en terminant par la dernière page qui comporte une telle empreinte.

Un des symboles suivants apparaîtra sur la dernière image de chaque microfiche, selon le cas: le symbole \rightarrow signifie "A SUIVRE", le symbole ∇ signifie "FIN".

Les cartes, planches, tableaux, etc., peuvent être filmés à des taux de réduction différents. Lorsque le document est trop grand pour être reproduit en un seul cliché, il est filmé à partir de l'angle supérieur gauche, de gauche à droite, et de haut en bas, en prenant le nombre d'images nécessaire. Les diagrammes suivants illustrent la méthode.

ATHLETIC SPORTS



WEDNESDAY, OCT. 4, 1871,

AT TWO O'CLOCK P.M.

—oo—

STEWARDS—Blue.

I. HELLMUTH,
G. CROGHAN,
G. DOBBS,
O. H. CAMERON,

A. H. BETTS,
F. FAUQUIER,
G. S. HELLMUTH,
C. F. PARKER,

R. MACKIE,
H. JONES,
H. B. JOHNSON,
E. QUINONES.

STARTER:

DR. SIPPI.

JUDGES:

F. WOLFERSTAN THOMAS, Esq.

E. HARRIS, Esq.

—♦♦—
LONDON, ONT.:

PRINTED BY THE FREE PRESS PRINTING COMPANY.

1871.

Vaulting.

PRIZE—PHOTOGRAPHIC ALBUM, Presented by Mr. W. L. Carrie. 8 Entries.

O. G. Dobbs,	Plaid	W. M. Manigault,	Green
H. B. Johnson,	Purple and White	C. A. Wheelock,	Purple
E. Quinones,	Red and Blue	S. Simpson,	Pink and Blue
I. Hellmuth,	Violet and White	C. Gunne,	Blue and Gold

Putting the Shell.

PRIZE—FLASK. 5 Entries.

T. Meredith,	Pink and White	W. Manigault,	Green
O. G. Dobbs,	Plaid	S. Simpson,	Pink and Blue
G. P. Macdonald,	Scarlet and White		

Three-Legged Race, 200 Yards.

PRIZE—TWO FISHING BASKETS. 12 Entries.

W. Thompson,	{ Pink and Rose	E. Fauquier,	{ Dark Blue
F. Snider,	{ Pink	G. Croghan,	{ Red, White & Blue
C. Abell,	{ Red	W. Crooks,	{ Red and White
C. Todd,	{ Purple and Black	G. S. Hellmuth,	{ Dark Blue & White
I. F. Hellmuth,	{ Violet and White	O. Gifford,	{ Lavender and Blue
O. G. Dobbs,	{ Plaid	G. Watson,	{ Lavender & Brown
H. Betts,	{ Green and Gold	R. J. D. Mackie,	{ Orange and White
C. Clouston,	{ Green and White	H. B. Johnson,	{ Purple and White
G. P. Macdonald,	{ Scarlet and White	H. Cameron,	{ Lavender & White
C. Gunne,	{ Blue and Gold	E. Parsons,	{ Red, White & Yell.
G. Wiggins,	{ Brown and Blue	C. F. Parker,	{ Magenta
V. Rivers,	{ Purple and Scarlet	S. Simpson,	{ Pink and Blue

Long Jump.

PRIZE—SCRAP BOOK, Presented by C. Chapman. 9 Entries.

T. Meredith,	Pink and White	H. Betts,	Green and Gold
W. Crooks,	Red and White	C. Grosvenor,	Red and Gold
G. P. Macdonald,	Scarlet and White	J. Dobbs,	Crimson and White
G. Croghan,	Red, White and Blue	R. Cochran,	Magenta and Gold
S. Simpson,	Pink and Blue		

Flat Race, 100 Yards, Boys under 12.

PRIZE—GOOD WORDS FOR THE YOUNG, Presented by Mr. W. L. Carrie. 9 Entries.

G. Wotherspoon,	Mauve and White	F. T. Evans,	Crimson and Yellow
A. Watson,	Ochre and Blue	J. Cameron,	Vermilion and White
J. Boyd,	Green and Purple	R. Macfarland,	Green and White
C. R. Atkinson,	Maroon	E. Tinker,	Orange
V. Rivers,	Purple and Scarlet		

Flat Race, 100 Yards, Boys under 15.

PRIZE—TROUT ROD. 8 Entries.

F. E. Snider,	Pink	G. Watson,	Lavender and Brown
A. Norrie,	Light Blue	O. C. Gifford,	Lavender and Blue
R. Copland,	White and Yellow	B. S. Pomeroy,	Red and Green
C. Simpson,	White and Gold	A. M. Parker,	Mauve

Flat Race, 100 Yards, Boys over 15.

PRIZE—DRESSING CASE, Presented by Secretary. 11 Entries.

O. G. Dobbs,	Plaid	E. Parsons,	Red, White and Yellow
I. F. Hellmuth,	Violet and White	F. Fauquier,	Dark Blue
H. Betts,	Green and Gold	G. S. Hellmuth,	Dark Blue & White
W. Manigault,	Green	S. Simpson,	Pink and White
J. Eyre,	Purple and Red	H. B. Johnson,	Purple and White
W. Crooks,	Red and White		

Hurdle Race, 100 Yards, Boys under 16.

PRIZE—CRICKET PADS. 3 Entries.

G. S. Hellmuth,	Dark Blue & White	G. P. Macdonald,	Scarlet & White
C. Simpson,	White and Gold		

High Jump.

PRIZE—PHOTOGRAPHIC ALBUM, Presented by E. A. Taylor. 9 Entries.

B. S. Pomeroy,	Red and Green	W. Crooks,	Red and White
S. Simpson,	Pink and Blue	R. Cochran,	Magenta and Gold
F. Fauquier,	Dark Blue	H. Betts,	Green and Gold
G. Croghan,	Red, White and Blue	C. F. Parker,	Magenta
E. Parsons,	Red, White and Yellow		

Hurdle Race, 150 Yards, 10 Flights.

PRIZE—SILVER CUP; Presented by Upper Mod.

O. G. Dobbs,	Plaid	H. Jones,	Lavender, Blue and Red
S. Simpson,	Pink and Blue	C. Clouston,	Green and White
G. P. Macdonald,	Scarlet and White	F. Fauquier,	Dark Blue
E. A. Parsons,	Red, White & Yellow	G. Croghan,	Red, White and Blue
H. B. Johnson,	Purple and White	W. Crooks,	Red and White

Throwing Cricket Ball.

PRIZE—CRICKET BALL. 6 Entries.

C. R. Gunne,	Blue and Gold	C. Grosvenor,	Red and Gold
F. Wiggins,	Light Blue and White	A. H. Betts,	Green and Gold
C. A. Wheelock,	Purple	E. Fuller,	Gold

One Mile Race.

PRIZES—1st, SILVER MEDAL; 2nd, POWDER FLASK and SHOT BELT; Presented by VI. and V. Forms. 15 Entries.

L. Norrie,	Light Blue	G. S. Hellmuth,	Dark Blue & White
F. Fauquier,	Dark Blue	S. Simpson,	Pink and Blue
H. B. Johnson,	Purple and White	C. A. Wheelock,	Purple
F. E. Snider,	Pink	R. J. D. Mackie,	Orange and White
J. Eyre,	Purple and Red	G. Croghan,	Red, White and Blue
E. Parsons,	Red, White & Yellow	C. Abell,	Red
G. Wiggins,	Brown and Blue	C. F. Parker,	Magenta
W. Thompson,	Pink and Rose		

vs under 15.

CRICKET BALL; 2nd, DRESSING CASE, Presented by Gordon, Esq. 9 Entries.

F. E. Snider,	Pink	L. Betts,	Violet
C. Abell,	Red	G. Wiggins,	Brown and Blue
G. Watson,	Lavender and Brown	C Simpson,	White and Gold
L. Norrie,	Light Blue	A. M. Parker,	Mauve
A. Theriot,	Magenta and Gold		

Quarter Mile Race, Boys under 12.

PRIZE—WRITING PORTFOLIO. 6 Entries.

F. T. Evans,	Crimson and Yellow	J. N. Cameron,	Vermilion and White
N. T. Parker,	Mauve	J. Ormsby,	Pink and Black
G. Wotherspoon,	Mauve and White	J. Boyd,	Green and Yellow

High Jump, with Pole.

PRIZE—PENCIL CASE. 6 Entries.

W. Crooks,	Red and White	F. Fauquier,	Dark Blue
J. R. Dobbs,	Crimson and White	G. Croghan,	Red, White and Blue
E. Parsons,	Red, White and Yellow	O. G. Dobbs,	Plaid

Sack Race, 50 Yards.

PRIZES—1st, SACHELL, presented by R. Gordon, Esq.; 2nd, RIDING WHIP. 24 Entries.

C. F. Parker,	Magenta	I. Hellmuth,	Violet and White
G. Wotherspoon,	Mauve and White	C. Clouston,	Green and White
D. Campbell,	Orange and Blue	F. Fauquier,	Dark Blue
S. Simpson,	Pink and Blue	W. Thompson,	Pink and Rose
C. Wheelock,	Purple	E. Parsons,	Red, White and Yellow
G. Macdonald,	Scarlet and White	H. Betts,	Green and Gold
G. Watson,	Lavender and Brown	J. Dobbs,	Crimson and White
F. E. Snider,	Pink	W. Crooks,	Red and White
G. S. Hellmuth,	Dark Blue & White	A. Norrie,	Light Blue
E. Quinones,	Red and Blue	J. Eyre,	Purple and Red
O. Gifford,	Lavender and Blue	F. S. Barnard,	White
W. Gordon,	Magenta and White	C. Abell,	Red

Quarter Mile Race, Pupils and Ex-Pupils.

PRIZE—PIC-NIC BASKET.

Consolation Stakes, 300 Yards.

PRIZE—BOXING GLOVES.

Winners' Champion Race, Quarter Mile.

PRIZE—GOLD MEDAL, presented by the President.

Steeple Chase.

PRIZE—SACHELL.

