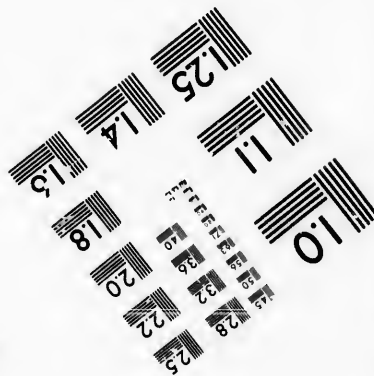
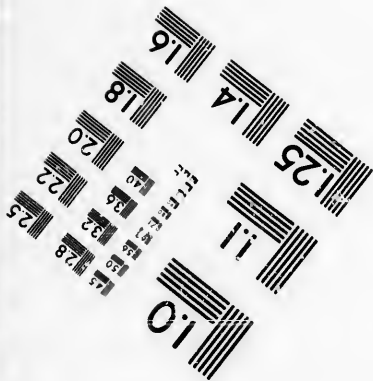
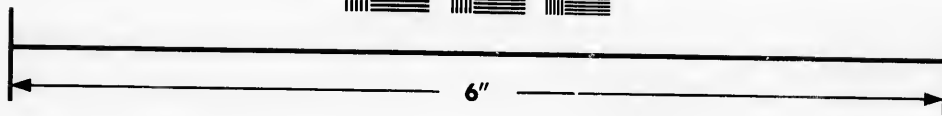
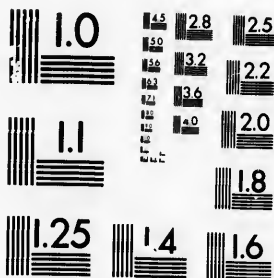


**IMAGE EVALUATION  
TEST TARGET (MT-3)**



**Photographic  
Sciences  
Corporation**

23 WEST MAIN STREET  
WEBSTER, N.Y. 14580  
(716) 872-4503

1.8  
2.0  
2.2  
2.5  
2.8  
3.2  
3.6  
4.0  
4.5  
5.0

**CIHM/ICMH  
Microfiche  
Series.**

**CIHM/ICMH  
Collection de  
microfiches.**



Canadian Institute for Historical Microreproductions / Institut canadien de microreproductions historiques

01

**© 1986**

Technical and Bibliographic Notes/Notes techniques et bibliographiques

The Institute has attempted to obtain the best original copy available for filming. Features of this copy which may be bibliographically unique, which may alter any of the images in the reproduction, or which may significantly change the usual method of filming, are checked below.

L'Institut a microfilmé le meilleur exemplaire qu'il lui a été possible de se procurer. Les détails de cet exemplaire qui sont peut-être uniques du point de vue bibliographique, qui peuvent modifier une image reproduite, ou qui peuvent exiger une modification dans la méthode normale de filmage sont indiqués ci-dessous.

- Coloured covers/  
Couverture de couleur
- Covers damaged/  
Couverture endommagée
- Covers restored and/or laminated/  
Couverture restaurée et/ou pelliculée
- Cover title missing/  
Le titre de couverture manque
- Coloured maps/  
Cartes géographiques en couleur
- Coloured ink (i.e. other than blue or black)/  
Encre de couleur (i.e. autre que bleue ou noire)
- Coloured plates and/or illustrations/  
Planches et/ou illustrations en couleur
- Bound with other material/  
Relié avec d'autres documents
- Tight binding may cause shadows or distortion  
along interior margin/  
La reliure serrée peut causer de l'ombre ou de la  
distorsion le long de la marge intérieure
- Blank leaves added during restoration may  
appear within the text. Whenever possible, these  
have been omitted from filming/  
Il se peut que certaines pages blanches ajoutées  
lors d'une restauration apparaissent dans le texte,  
mais, lorsque cela était possible, ces pages n'ont  
pas été filmées.
- Additional comments:./  
Commentaires supplémentaires:

- Coloured pages/  
Pages de couleur
- Pages damaged/  
Pages endommagées
- Pages restored and/or laminated/  
Pages restaurées et/ou pelliculées
- Pages discoloured, stained or foxed/  
Pages décolorées, tachetées ou piquées
- Pages detached/  
Pages détachées
- Showthrough/  
Transparence
- Quality of print varies/  
Qualité inégale de l'impression
- Includes supplementary material/  
Comprend du matériel supplémentaire
- Only edition available/  
Seule édition disponible
- Pages wholly or partially obscured by errata  
slips, tissues, etc., have been refilmed to  
ensure the best possible image/  
Les pages totalement ou partiellement  
obscurcies par un feuillet d'errata, une pelure,  
etc., ont été filmées à nouveau de façon à  
obtenir la meilleure image possible.

This item is filmed at the reduction ratio checked below/  
Ce document est filmé au taux de réduction indiqué ci-dessous.

10X	12X	14X	16X	18X	20X	22X	24X	26X	28X	30X	32X
<input type="checkbox"/>	<input type="checkbox"/>	<input type="checkbox"/>	<input type="checkbox"/>	<input type="checkbox"/>	<input type="checkbox"/>	<input type="checkbox"/>	<input checked="" type="checkbox"/>	<input type="checkbox"/>	<input type="checkbox"/>	<input type="checkbox"/>	<input type="checkbox"/>

The copy filmed here has been reproduced thanks to the generosity of:

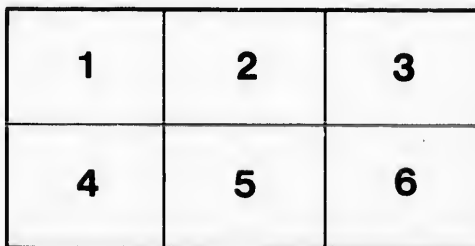
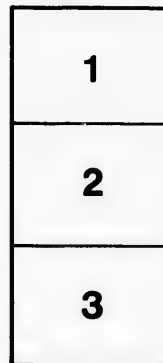
Douglas Library  
Queen's University

The images appearing here are the best quality possible considering the condition and legibility of the original copy and in keeping with the filming contract specifications.

Original copies in printed paper covers are filmed beginning with the front cover and ending on the last page with a printed or illustrated impression, or the back cover when appropriate. All other original copies are filmed beginning on the first page with a printed or illustrated impression, and ending on the last page with a printed or illustrated impression.

The last recorded frame on each microfiche shall contain the symbol  $\rightarrow$  (meaning "CONTINUED"), or the symbol  $\nabla$  (meaning "END"), whichever applies.

Maps, plates, charts, etc., may be filmed at different reduction ratios. Those too large to be entirely included in one exposure are filmed beginning in the upper left hand corner, left to right and top to bottom, as many frames as required. The following diagrams illustrate the method:



L'exemplaire filmé fut reproduit grâce à la générosité de:

Douglas Library  
Queen's University

Les images suivantes ont été reproduites avec le plus grand soin, compte tenu de la condition et de la netteté de l'exemplaire filmé, et en conformité avec les conditions du contrat de filmage.

Les exemplaires originaux dont la couverture en papier est imprimée sont filmés en commençant par le premier plat et en terminant soit par la dernière page qui comporte une empreinte d'impression ou d'illustration, soit par le second plat, selon le cas. Tous les autres exemplaires originaux sont filmés en commençant par la première page qui comporte une empreinte d'impression ou d'illustration et en terminant par la dernière page qui comporte une telle empreinte.

Un des symboles suivants apparaîtra sur la dernière image de chaque microfiche, selon le cas: le symbole  $\rightarrow$  signifie "A SUIVRE", le symbole  $\nabla$  signifie "FIN".

Les cartes, planches, tableaux, etc., peuvent être filmés à des taux de réduction différents. Lorsque le document est trop grand pour être reproduit en un seul cliché, il est filmé à partir de l'angle supérieur gauche, de gauche à droite, et de haut en bas, en prenant le nombre d'images nécessaire. Les diagrammes suivants illustrent la méthode.

# EVANGELINE LANSB



F5012 [189-3] 1912

# Evangeline Land

Picturesque Places through the land made famous by Longfellow, the Home of the Maid Evangeline. Yarmouth and Weymouth, pretty Watering Places. Digby, the Saratoga of Nova Scotia. Ancient Annapolis Royal. Wolfville and the Dikes of Grand Pré and Windsor.



Publisher, W. G. MACFARLANE, Saturday Night Building, Toronto.



Photo: R. F. Guest.

Yarmouth Harbor from the Grand Hotel.



Grand Hotel, Yarmouth, the Leading Summer Hotel in Nova Scotia.

30-11.2





By permission of R. F. Guest.

The Churn, Yarmouth.

*At the Head of Yarmouth Harbor*



*Lo! the Poor Redman*



YARMOUTH. N.S.



*Yarmouth Light*



Yarmouth, the Gateway of Nova Scotia



COLLAGE BY YARMOUTH M.C.

S. J. W.

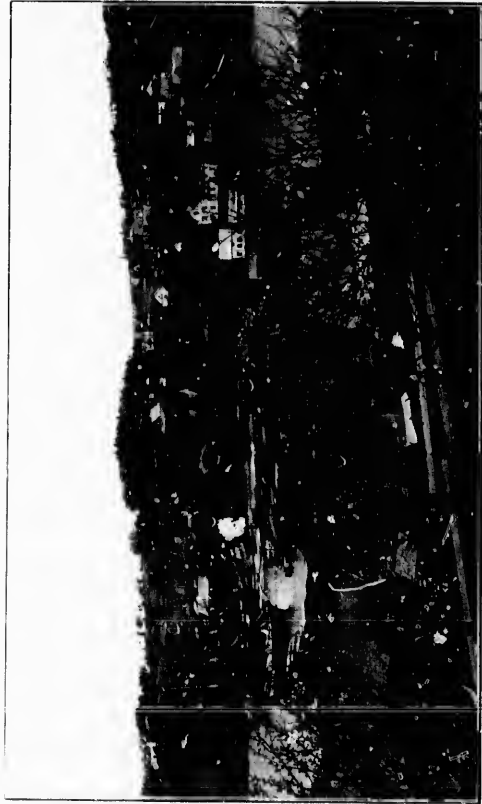
A Typical Residential Street in Yarmouth.



On the Calm Waters of Yarmouth Harbor.

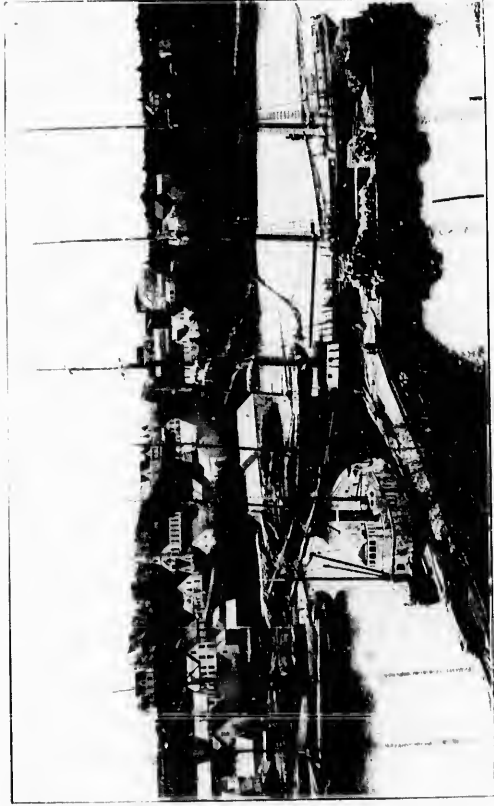


Mouth of Sissiboo River, Weymouth.



Weymouth Bridge, looking North.

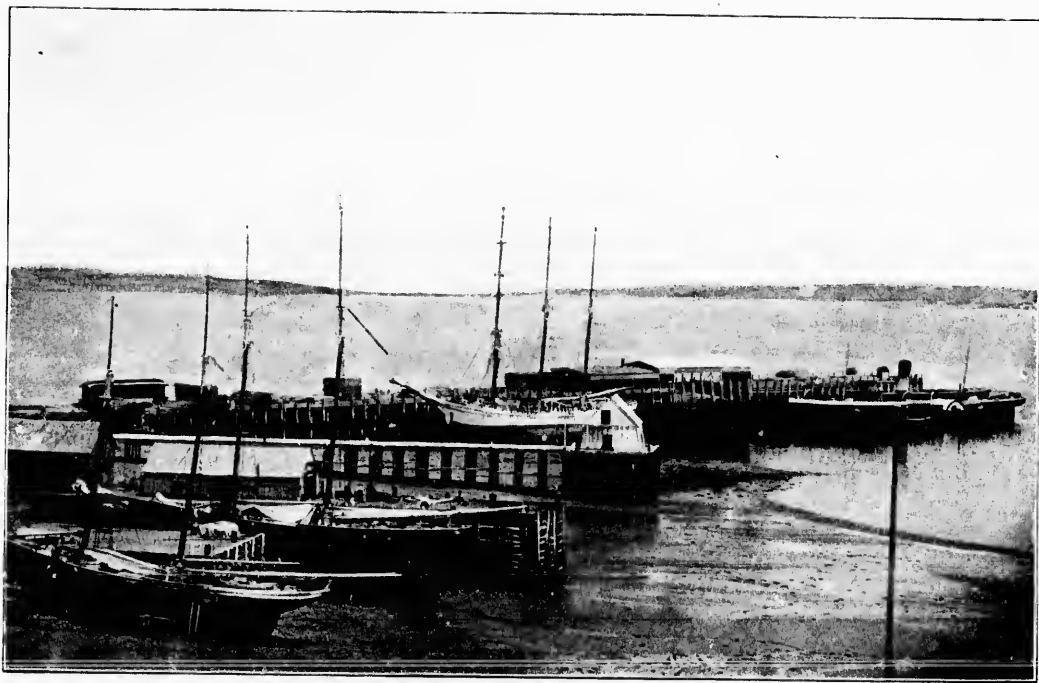
Weymouth Bridge, looking North.



Weymouth Bridge, looking South.



A Jovous Sky at Digby.

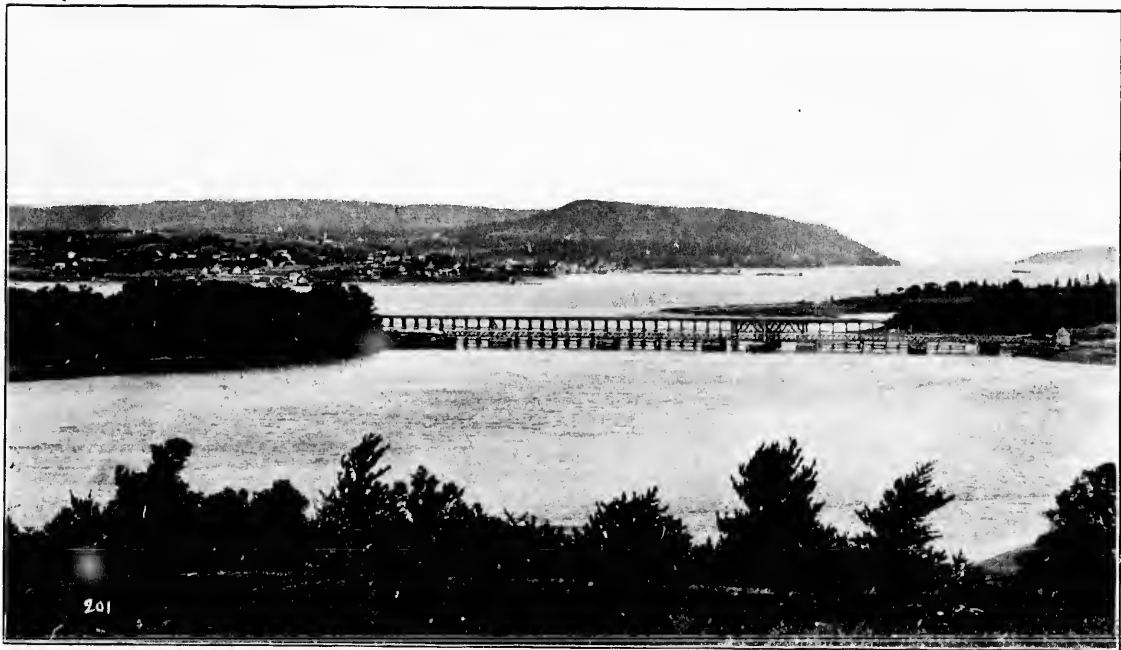


Digby Pier and D. A. R. Steamer Prince Rupert.



Water Street, Digby, and Post Office.

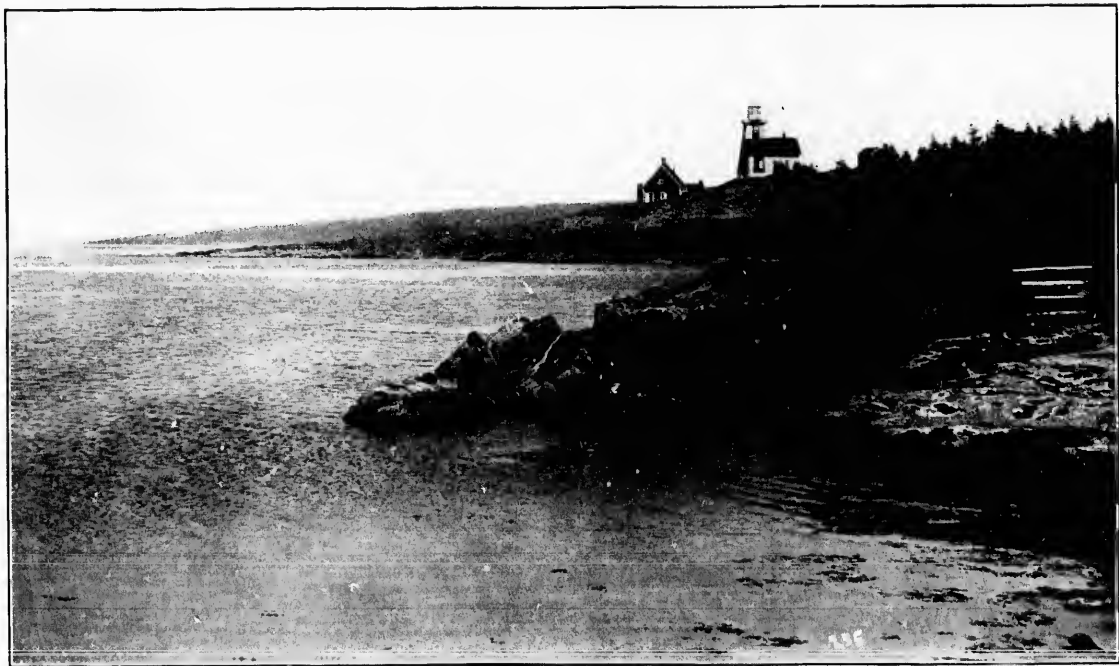




Digby from Across the Basin



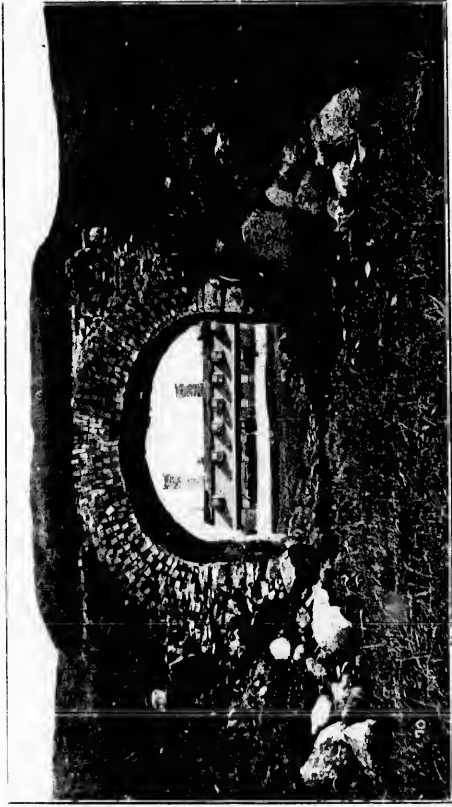
Digby, the Cherry Town.



Point Prim and Lighthouse, Digby.



Two Conceptions of the Maid Evangeline.



Sally Port of Old Port Royal, Annapolis.

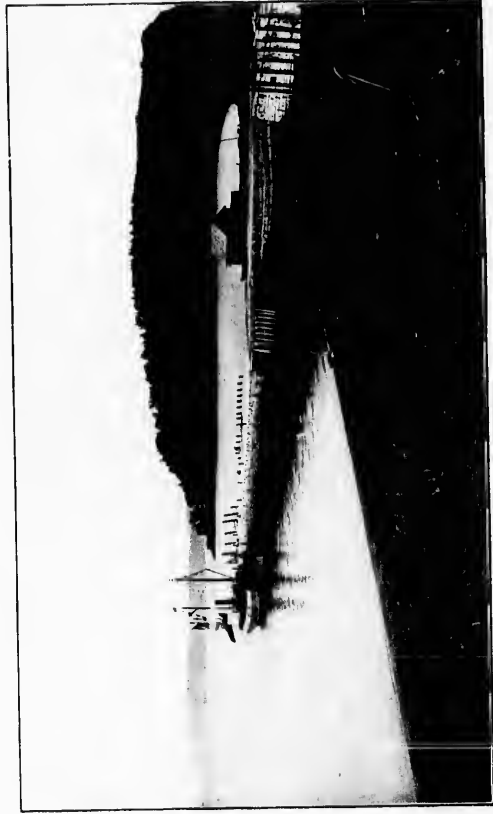


Old Magazine at Annapolis. Two Centuries and a Half Old.

Old Magazine at Annapolis. Two Centuries and a Half Old.



Annapolis Royal, the Second Oldest Town on the Continent.



Parrsboro Pier and Partridge Island.

Sam Slick's House - Windsor, N.S.



Old Magazine at Annapolis.  
Two Centuries and a half old



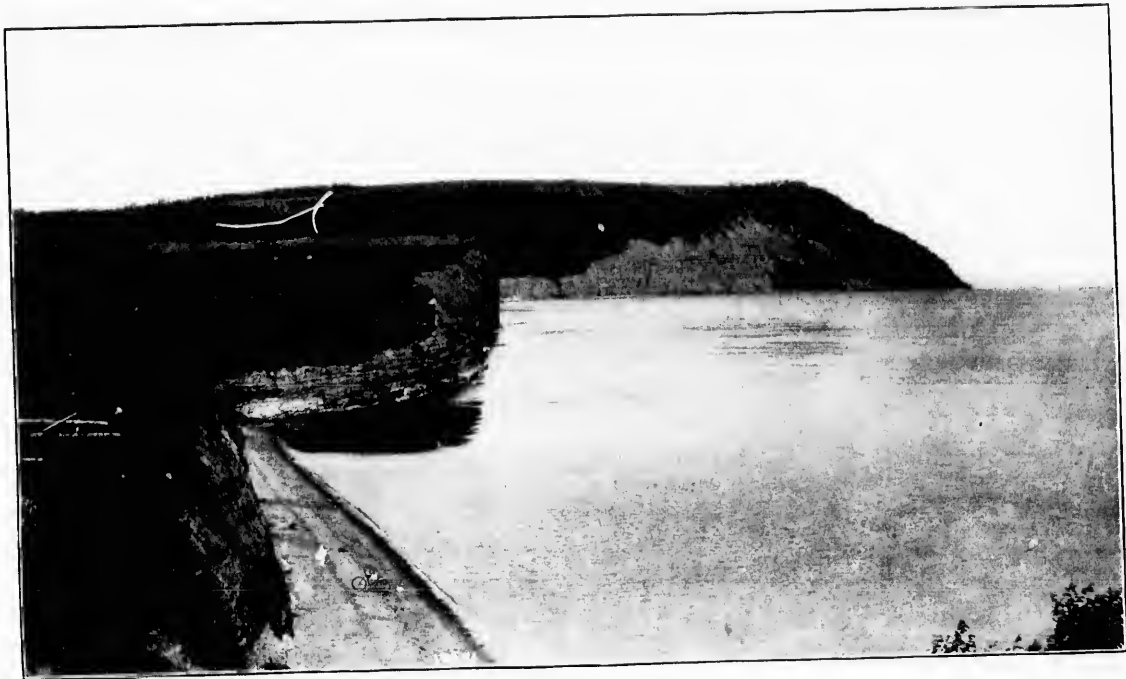
Sally Port at Old Port Royal  
Annapolis.



View from  
The Lookoff  
NEAR  
Kentville, N.S.

Blomidon  
and  
Minas Basin  
FROM  
COLLEGE HILL.  
WOLFVILLE.

Scenes in the Garden of Nova Scotia.

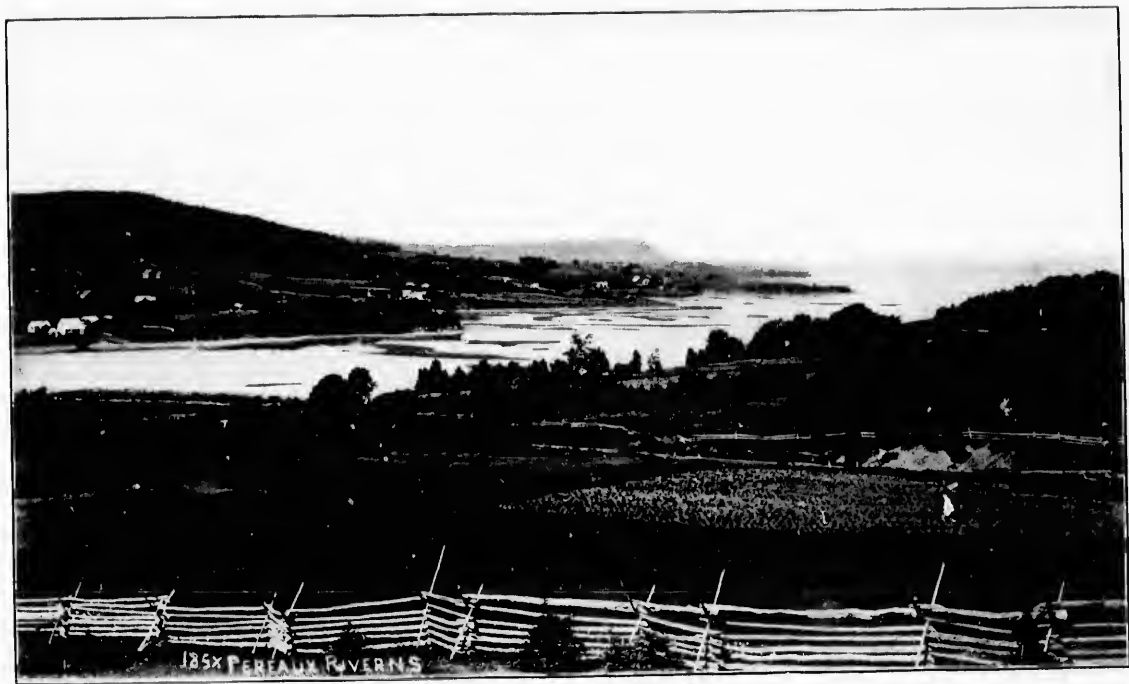


Cape Blomidon.





In the Land of Evangeline.



Pereaux River, with Blomidon in Distance.

Old French Relics



Acadia College

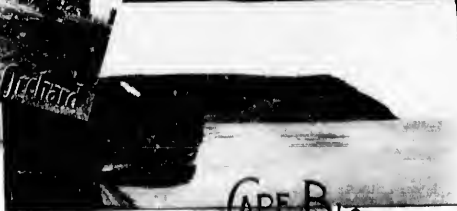


Evangeline's Home



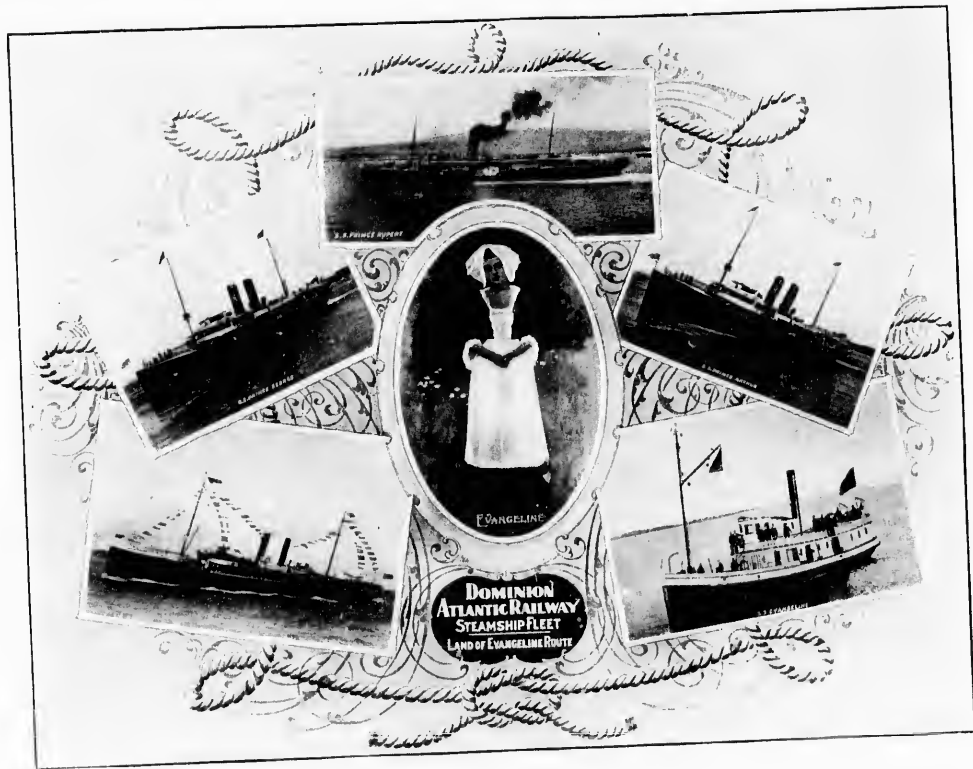
Old French Orchard

PA 11116  
Boston



CAPE BLOMIDON

By the Shores of the Basin of Minas.





View from the Look Off,  
The Look Off is on the summit of North Mountain, a two hours' drive from Wolfville, and affords one of the  
Orchards and Farm Lands, the blue waters, of the Minas Basin, and the Historic  
upon," for its natural charm and the inspiration

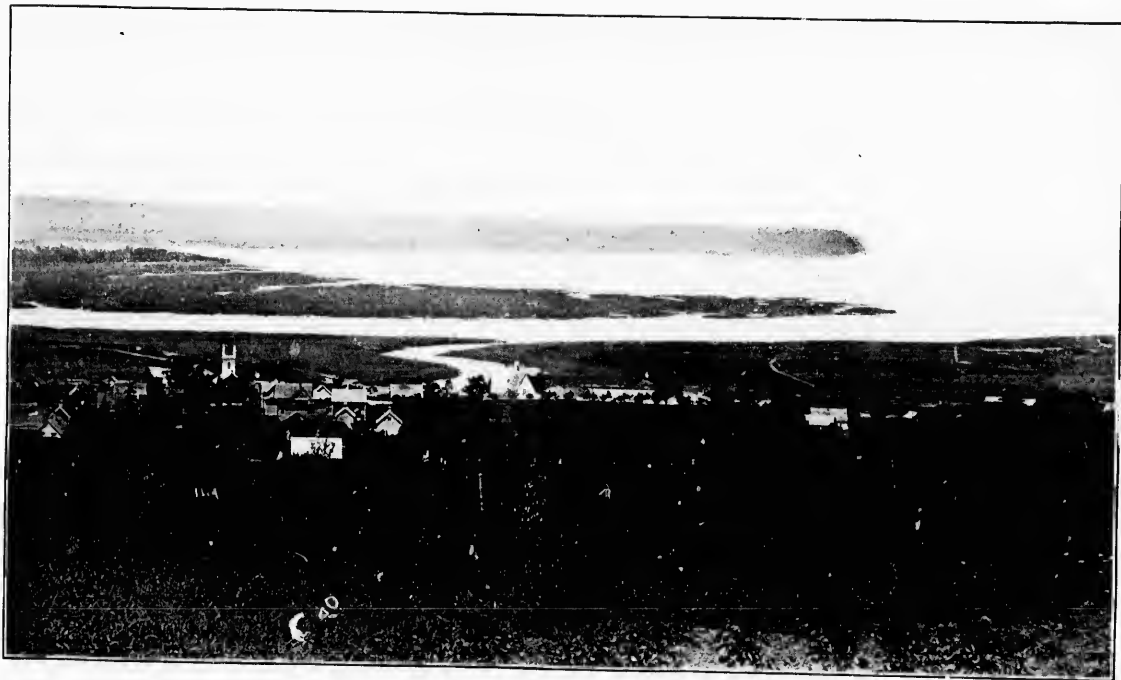
Ove  
most  
Gran  
of it



Overlooking Five Counties.

most magnificent Panoramic Views in America. The Valleys of Five Rivers are seen with their smiling Grand Pré Dyke Lands. It is a scene that one might cross a Continent to look of its Historic and Romantic Associations.

ook Off,  
one of the  
the Historic  
inspiration



Blomidon and Minas Basin from Wolfville.

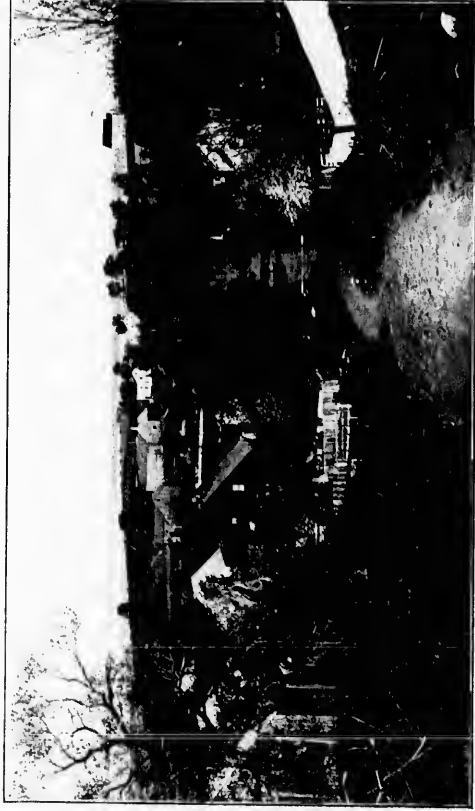


Gaspereaux Valley, a Picture of Pastoral Simplicity.





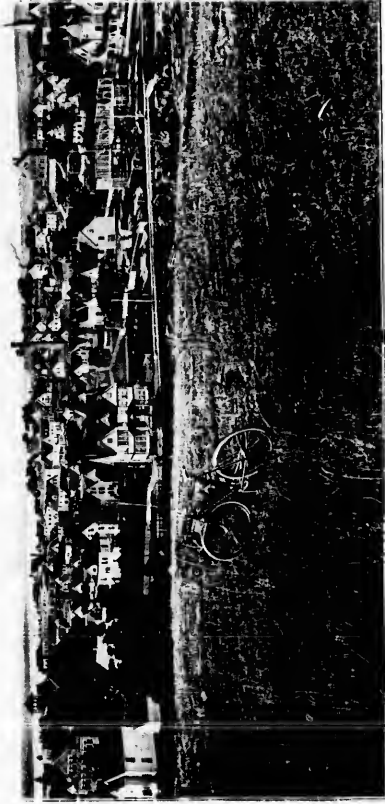
Old Well and Willows at Grand Pre



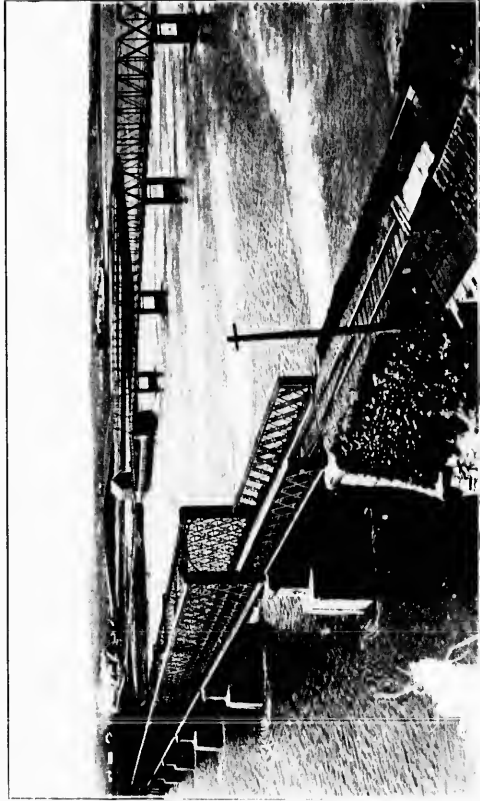
Grand Pre Village.



Amid the Apple Blossoms of Evangeline Land.



The Town of Windsor.



The Bridges at Windsor.

