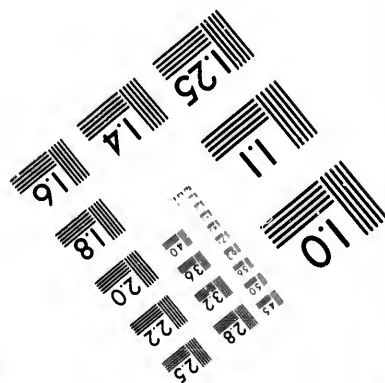
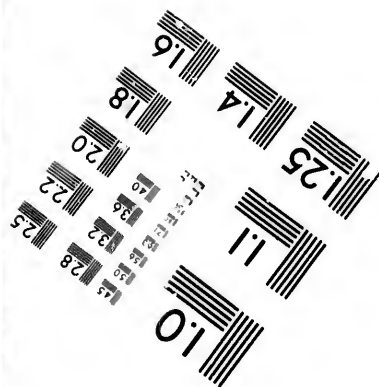
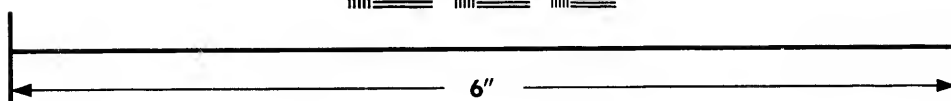
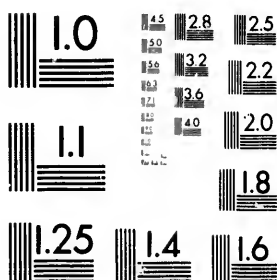


**IMAGE EVALUATION  
TEST TARGET (MT-3)**



**Photographic  
Sciences  
Corporation**

23 WEST MAIN STREET  
WEBSTER, N.Y. 14580  
(716) 872-4503





The copy filmed here has been reproduced thanks to the generosity of:

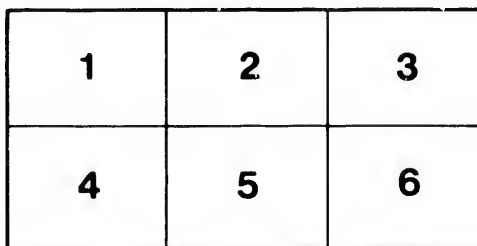
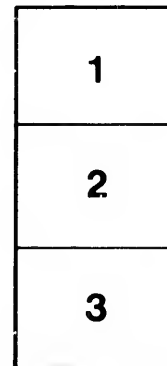
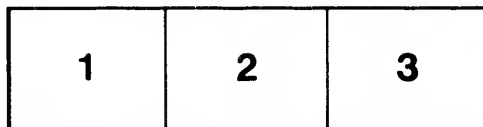
Library Division  
Provincial Archives of British Columbia

The images appearing here are the best quality possible considering the condition and legibility of the original copy and in keeping with the filming contract specifications.

Original copies in printed paper covers are filmed beginning with the front cover and ending on the last page with a printed or illustrated impression, or the back cover when appropriate. All other original copies are filmed beginning on the first page with a printed or illustrated impression, and ending on the last page with a printed or illustrated impression.

The last recorded frame on each microfiche shall contain the symbol  $\rightarrow$  (meaning "CONTINUED"), or the symbol  $\nabla$  (meaning "END"), whichever applies.

Maps, plates, charts, etc., may be filmed at different reduction ratios. Those too large to be entirely included in one exposure are filmed beginning in the upper left hand corner, left to right and top to bottom, as many frames as required. The following diagrams illustrate the method:



L'exemplaire filmé fut reproduit grâce à la générosité de:

Library Division  
Provincial Archives of British Columbia

Les images suivantes ont été reproduites avec le plus grand soin, compte tenu de la condition et de la netteté de l'exemplaire filmé, et en conformité avec les conditions du contrat de filmage.

Les exemplaires originaux dont la couverture en papier est imprimée sont filmés en commençant par le premier plat et en terminant soit par la dernière page qui comporte une empreinte d'impression ou d'illustration, soit par le second plat, selon le cas. Tous les autres exemplaires originaux sont filmés en commençant par la première page qui comporte une empreinte d'impression ou d'illustration et en terminant par la dernière page qui comporte une telle empreinte.

Un des symboles suivants apparaîtra sur la dernière image de chaque microfiche, selon le cas: le symbole  $\rightarrow$  signifie "A SUIVRE", le symbole  $\nabla$  signifie "FIN".

Les cartes, planches, tableaux, etc., peuvent être filmés à des taux de réduction différents. Lorsque le document est trop grand pour être reproduit en un seul cliché, il est filmé à partir de l'angle supérieur gauche, de gauche à droite, et de haut en bas, en prenant le nombre d'images nécessaire. Les diagrammes suivants illustrent la méthode.

# Royal Agricultural and Industrial Society

OF BRITISH COLUMBIA.

---

## Officers, 1893.

PRESIDENT - - T. J. TRAPP, New Westminster

### VICE-PRESIDENTS

G. W. CHADSEY, - - - - - Sumas  
E. HUTCHERSON, - - - - - Ladner's Landing

TREASURER - G. D. BRYMNER, New Westminster

SECRETARY - A. B. MACKENZIE, New Westminster

---

### DIRECTORS.

C. G. Major, New Westminster; G. A. Perrin, Victoria; J. C. McLagan, Vancouver; W. H. Ladner, Ladner's Landing; P. Latham, New Westminster; J. M. Johnston, Langley; A. J. Street, Sumas; H. Webb, Chilliwack; S. Knight, Sardis; H. Roy, New Westminster; John Kirkland, Ladner's Landing; G. W. Henry, Port Hammond; H. Ferguson, Port Haney; D. R. Ker, Victoria; E. Wilson, Sumas; Thos. Shannon, Clover Valley; L. Williams, New Westminster; A. H. B. MacGowan, Vancouver; Thos. Mackie, Sea Island; S. E. Tolmie, Victoria; James Punch, Brownsville; John Reid, New Westminster; Wm. Dodd, Victoria; W. J. Harris, Port Hammond; G. A. McTavish, Victoria; H. Davis, Langley; H. F. Page, Matsqui; D. S. Curtis, New Westminster; T. A. Sharpe, Agassiz; G. R. Ashwell, Chilliwack.

---

## FRANK S. DEGREY,

HAS THE

## Best ~ Tonsorial ~ Parlors

And BATHS in the city. Try them.

NWP  
971.31  
R888

# Citizens' Celebration,

✻ 1893. ✻

## Executive Committee.

CHAIRMAN - - - HIS WORSHIP MAYOR CURTIS

### VICE-CHAIRMEN.

W. B. TOWNSEND, - - - G. E. CORBOULD, M.P.,  
J. C. BROWN, M.P.P. - - - I. B. Fisher,  
GEO. D. BRYMNER, - - - E. A. WYLD.

TREASURER - - - J. S. C. FRASER

SECRETARY - - - A. B. MACKENZIE

## Reception Committee.

The Mayor and Council, G. E. Corbould, M.P., J. C. Brown, M. P. P., Hon. Mr. Justice McCreight, W. J. Armstrong, H. V. Edmonds, John Hendry, Alex. Ewen, B. Douglas, J. S. Clute, I. B. Fisher, G. D. Brymner, E. A. Wyld, C. G. Major, Jno. Mackenzie, Chas. Warwick, D. J. Munn, Jno. Wilson, Jno. McNab, T. Cunningham, J. A. Webster, M. M. English, Geo. Kennedy, Jas Leamy, F. R. Glover, W. B. Townsend, J. S. C. Fraser, Peter Grant.


ADVERTISING AND PRINTING COMMITTEE. A. O. Campbell, Chairman, Alex. Philip, F. R. Glover, R. McBride.

DECORATION COMMITTEE. H. B. Shadwell, Chairman, H. G. Ross, J. Theo. Wilson.

COLLECTING COMMITTEE. A. O. Campbell, J. W. McColl, J. E. Phillips, J. R. Brennan, R. Jardine, James Cash, J. V. Rankin, J. B. Kennedy, L. A. Lewis, Wm. Vianen, A. Malins.

MUSIC. W. H. Falding, R. J. Rickman, W. H. Keary.

FIELD SPORTS. Lacrosse:—John Reid, R. G. Macpherson, J. J. Cambridge. Football:—W. Allison, H. T. Tovey, A. Malins. Foot Races and Sailors' Sports:—Geo. D. Brymner, J. A. McMartin, H. L. Edmonds.

JACKSON'S 

Official • Programme.



Tuesday, September 26th.



Preparation day and judging of Exhibits, which must all be in place and ready for Exhibition by 12 noon.

---

Wednesday, September 27th.

CIVIC HOLIDAY.

9 a.m. Exhibition of the Royal Agricultural and Industrial Society open to the public.

11 a.m. Grand Procession and Societies parade.

Route: Starting at Albert Crescent down Columbia Street to Eighth Street, up Eighth Street to Agnes Street, along Agnes Street to Sixth Street, up Sixth Street to Third Avenue, along Third Avenue to Queen's Park.

Grand Marshal, James Leamy; Deputy Marshals, Chief Ackerman and Chief of Police Huston.

COMMITTEE. J. Theo. Wilson, M. M. Mowat, A. J. Holmes, James Leamy, T. Ackerman, Wm. Huston.

Presentation by His Worship Mayor Curtis, of an address

262207

# B. C. Mills, Timber and Trading

## Company.

VANCOUVER. NEW WESTMINSTER.

MANUFACTURERS OF ALL KINDS OF

**DOORS,**

SASH,  
BLINDS,  
FRAMES,  
MANTELS,

Mouldings, etc.



**LUMBER**

LATH,  
SHINGLES,  
PICKETS,

**Fish and Fruit  
Cases, etc.**

Machine Carved Panels,

FLUTED AND SPIRAL TURNED WORK,



*Importers of English, Belgian, Plate,  
Sheet and Fancy Glass.*



of welcome to His Honor Lieutenant Governor Dewdney and Mrs. Dewdney, on the occasion of their first official visit to the City of New Westminster.

12 noon. Official Opening of the Exhibition by His Honor Lieutenant-Governor Dewdney and Mrs. Dewdney.

1:30. to 2:30. Rugby Football Match, Vancouver vs. Westminster.

2:30. Championship Lacrosse Match, Victoria vs. Westminster.

Evening. Grand Promenade Concert in Exhibition Building, Queen's Park, Westminster City Band; C. H. Watson, Director.

**Programme.**

8 p.m. First Concert.

OVERTURE..... "Zampa." ..... Herold

CONCERT VALSE... "L'Etoile Polaire." ..... Waldteufel

GRAND FANTASIA... "Songs and Dances of Northern Europe." ..... Kuhner

The Russian Hymn, the finale, accompanied by ringing Bells and firing of cannons.

{ SONG..... "Thoughts and Tears." ..... Hope Temple  
Cornet, Mr. E. F. Darcy.

{ GLEE..... "Phyllis is my only joy." ..... Hobbs  
In the old English style.

Patrol..... "The passing Guards." ..... Myrelles  
Introducing fifes, drums, bagpipes.

INTERMISSION.

9.30 p.m. Second Concert.

Overture... "Semiramide." ..... Rossini

Tone Pictures from "Tannhauser." ..... Wagner

"Reminiscences of Gaiety Theatre, London." .... Arr. by Kappey  
Selection of Melodies by Meyer Lutz.

Scenes Picturesque.. "A day in Switzerland." ..... Otto Langley

1. "Rustic Picture." 3. "Alphorn and Landler."

2. "Peasant Dance." 4. "L'irolienne."

Lancers. .... "'Arry and 'Arriet." ..... Crook.  
(On Songs by Albert Chaveller.)

GOD SAVE THE QUEEN.

**FRED. JACKSON, Commercial Job Printer.**

## Thursday. September 28th.

9:30 a.m. Aquatic Sports.

1. Canoe Race, amateur. Tandem, single blade, 1 mile straightaway. 1st prize gold sleeve links, 2nd prize silver sleeve links.

2. Single Scull Race. (Outrigged skiffs 20 feet and under.)  $\frac{1}{2}$  mile straightaway. Prize, medal.

3. Canoe Race, amateur. Single blade,  $\frac{1}{2}$  mile straightaway. 1st prize, clock, 2nd prize, flask

4. Indian Canoe Race. 2 paddles. Prizes cash, 1st \$5, 2nd \$3.

5. Canoe Race, amateur. Fours, single blade,  $\frac{1}{2}$  mile straightaway. Prize, pewters.

6. Double Scull Races. In rigged skiffs, 1 mile straightaway. Prize, medals.

7. Fishermen's Race, double. To be rowed in Fraser River fishing boats,  $1\frac{1}{2}$  miles straightaway. Prizes cash, 1st \$15, 2nd \$8.

8. Indian Canoe Race, 11 paddles. Prizes cash, 1st \$22, 2nd \$11.

9. Canoe Race, amateur. Sailing distance 5 miles. 1st prize, cigar box, 2nd prize, double blade paddle.

10. Fishermen's sailing Race. To be sailed in fishing boats; not to exceed 26 feet. Distance 5 miles. Entrance fee of \$1 per boat. Prizes, 1st cash, \$25, 2nd entrance fee.

N.B. A.C.A. rules to govern all Amateur Canoe Races, with the exception of No. 5, in which any open canoe can be used. Judge's decision in all cases to be final.

Three entries in each race or no second prize.

Committee.—C. R. Townley, Chairman, F. C. Blomfield, and Jas. Wize.

10 a.m. Rifle Match, in charge of Messrs. John Reid and F. R. Glover.

10 a.m. Junior Lacrosse Match, Moonlighters (of New Westminster) vs. Vancouver.

12 to 1. Association Football Match, Vancouver vs. Westminster

1 p.m. to 6 p.m. First Annual Meet Canadian Wheelmen's Association—Pacific District, No. 11.

**OFFICERS OF THE DAY.** Starter, C. H. Gibbons, Victoria, B. C., Referee, F. G. Turner, New Westminster. Judges, A. A. Boak, C. S. Philips, Vancouver; J. A. McMartin, Westminster. Clerk of the Course, H. L. Edmonds, Westminster. Scorer, M. C. Raynard, Victoria. Handicapper, M. Gintzburger, Vancouver.

- BICYCLE RACES AND PRIZES.**
1. One Mile, Novice. 1st, trophy, value \$15; 2nd, ditto, value \$7.50.
  2. Two Mile Handicap. 1st, trophy, value \$25; 2nd, ditto, value \$15.
  3. One Quarter Mile, flying start, open. 1st, trophy, value \$25; 2nd, ditto, value \$15.
  4. One Mile Provincial Championship. Gold Medal, value \$50.
  5. Two Mile, Solid Tire, Handicap. 1st, trophy, value \$25; 2nd, ditto, value \$15.
  6. One Mile, open. 1st, trophy, value \$25; 2nd, ditto, value \$15.
  7. Five Mile, Provincial Championship. Gold Medal, value \$50.

**GEO. ADAMS,** Dealer in all kinds of

 **GROCERIES,**

**FRUIT, ETC.,** *Native and California,*

27 Eighth St., New Westminster.

**Teas a Specialty.** ☼ **Produce equal to Cash**

Telephone 92.

P. O. Box 350.

— THE  
**Guichon Hotel,**

N. W. Corner Columbia  
 and Mackenzie Streets,

NEW WESTMINSTER, B. C.



Tourists and Commercial Men's

— Headquarters. —



New Building.

New Furniture.

New Service.



This grand and most complete Hotel has just  
 been thrown open to the public, fully prepared to  
 cater to one and all.

**C. E. ROOS, Manager.**

8. Team Race. Trophy, value \$25.  
One-Half Mile (obstacle). 1st, \$20; 2nd, \$10.

C.W.A. Rules to govern. Entrance 50 cts. Championship \$1.00. Entries close September 20th. 1893. Right to alter Programme reserved. Information and entry forms will be promptly furnished by the Secretary. Address: W. S. KEAY, Sec'y-Treas. Bicycle Club, Westminster.

In conjunction with above the following Amateur Foot Races will be contested:

		1st	2nd
1.	100 Yards Dash, Trophies, value.....	\$12	\$6
2.	440 " run " " .....	12	6
3.	1 Mile run " " .....	15	8

⊗ Printing—Cheap at Jackson's. ⊗

# B. C. MILLING AND FEED CO.

✦ New Westminster Mills, ✦

MANUFACTURERS OF

**Rolled Oats, Oatmeal, Graham Flour, Split Peas**

— AND ALL KINDS OF CHOP FEEDS.

OFFICE AND MILL: FRONT STREET. **BATCHELOR & QUINE, Props.**



**Highest Cash Price paid for Milling Oats, Barley, Wheat and Peas.**

# The · Braekman · & · Ker Milling · Company,

DEALERS IN



**HAY, GRAIN AND MILL FEED, FLOUR,  
 ROLLED OATS AND OATMEAL, ETC.**

A full line of Choice Grass Seeds always on hand.

OFFICES: { 125 Government Street, VICTORIA.  
 543 Front St., NEW WESTMINSTER.

If you want to know the News  
**READ the Daily and Weekly** **Columbian**

Independent of all cliques, rings and Governments.

With an established and wide circulation—THIS IS THE PAPER TO  
 ADVERTISE IN.

DAILY COLUMBIAN - - - - \$8 per year in advance, mailed  
 WEEKLY COLUMBIAN - - - - \$2 per year in advance, mailed

**SPECIAL OFFER.**—Either paper for the remainder of  
 the present year and until the end of next year, for the  
 subscription price of one year. **NOW IS THE TIME TO  
 SUBSCRIBE.**

**KENNEDY BROS.,** Publishers and Proprietors,  
 COLUMBIAN BUILDING, corner Columbia St.  
 and Lytton Square, NEW WESTMINSTER.

8. p.m. Third Promenade Concert in Exhibition Buildings, Queen's Park, and presentation of prizes.

OVERTURE....."Eliza E. Claudio.".....Mercadante  
 GRAND SELECTION...."The Rose Maiden.".....F. H. Cowen  
 Beginning with chorus "Tis thy Wedding morning," including  
 Trio "Hast thou wandered." Duet, cornet and euphonium,  
 "But hear me." and "Soon as the mountain summits."  
 Chorus "O earthborn sorrow." "I know a rosebud shining."  
 Solos for flute, oboe, and euphonium." "Yea, e'en as die  
 the roses.  
 CONCERT WALTZES....."Sultana."..... ..Bucallossi  
 NAUTICAL FANTASIA.."Voyage in a Troopship.".... Geo. Miller  
 Description: Leaving Portsmouth "The Soldier's Tear." "Bo-  
 sen's call." "All hands! up anchor!" "Then fare thee well  
 fair Portsmouth Town." "The Anchor's weighed." "A we:  
 sheet's a flowing sea." "Bay of Biscay." Storm. Prayer.  
 "Santa Lucia." "We'll rant and we'll roar like true British  
 Sailors." "Tom Bowling." "The White Squall." "Satur-  
 day night in the fo'c'sle." Hornpipes. "Rule Britannia."

INTERMISSION AND DISTRIBUTION OF TROPHIES.

9.30 p.m. Fourth Concert.

OVERTURE.. .."William Tell.".....Rossini  
 CAVATINA "O Mio Fernando," from "La Favorita."  
 Arr. by Watson  
 Saxophone Solo, Mr. W. H. Falding.  
 DUETT....."Excelsior.".....Balfe  
 Cornet, Mr. E. F. Darcy. Baritone, Mr. Geo. Cunningham.  
 Grand Selection from Balfe's Opera "Bohemian Girl."  
 Arranged by Kappey  
 Introducing the favorite airs—"I dreamt I dwelt in marble  
 halls," Cornet solo; "The heart bowed down." Euphonium  
 solo; "When other lips and other hearts," Cornet solo.

D. S. CURTIS & CO.,

Wholesale and  
 Retail

Druggists.

Agents for B. Laurance Spectacles.

NEXT COLONIAL - - NEW WESTMINSTER.

Go your Interest! ☼



— Read, and be acquainted  
of the truth.



Printing From a Visiting Card to  
a Poster, executed  
promptly and tastefully

AT VERY LOW  
PRICES, BY . . .

FRED. JACKSON,

Commercial Job Printer

Columbian Office. —



## Friday, September 29th.

10 a.m. Junior Lacrosse Match for the Championship of British Columbia—being final matches in Tournament—in which Nanaimo, Vancouver and Westminster teams will be represented.

### TROTTING, PACING AND RUNNING RACES AND FEATS OF EQUESTRIANSHIP.

- 1:30 p.m. 1. Running.— $\frac{5}{8}$  mile, single dash. Open. Purse \$100.
2. Trotting and Pacing.—3-minute class. Mile heats. 3 in 5. Purse \$150.
3. Running.—Half-mile and repeat. Open. Purse \$200.
4. Trotting and Pacing.—2:40 class. Mile heats. 3 in 5. Purse \$200.
5. Running. One mile, single dash. Open. Purse \$150.
6. Trotting and Pacing.—Free for all. Mile heats. 3 in 5. Purse \$250.
7. Gymkhana.—Walk - a-half - trot - a-half - run - a-half. Purse \$50.
8. Running.—Ladies' Race. Half-mile, single dash. 1st and 2 prizes. Value \$25.

(Special Races may be arranged.)

Except where otherwise indicated, the rules of the National Trotting Association as to Trotting events, and the rules of the Pacific Coast Blood Horse Association as to running events, will govern these races.

The Committee reserves the right to alter, amend or postpone any or all of these races should they in their judgment, and for cause, deem it expedient to do so.

In the event of any race not filling, if the Committee deems proper to start the race, they reserve the right to withhold from the purse the entry of the missing horse or horses.

In all purse races, four or more are required to enter and three to start, except where otherwise provided.

In all purse races the entrance is ten per cent. except where otherwise provided.

All purses will be divided into two moneys, 70 and 30 per cent., except where otherwise provided.

### FEATS OF EQUESTRIANSHIP.

1. Best Cowboy Rider, to ride according to programme, cruelty to animals not permitted. 1st, \$10, 2nd, \$7.50, 3rd, \$5.
2. Tilting at ring. 1st, \$10, 2nd, \$7.50, 3rd, \$5.
3. Best hunter, to take at least 5 hurdles. 1st, \$10, 2nd, \$7.50, 3rd, \$5.
4. Most graceful and accomplished lady rider (entrance fee \$1; 5 to enter). 1st, \$10, 2nd, \$7.50, 3rd, \$5.
5. Most graceful and accomplished gentleman rider (entrance fee \$2; 5 to enter). 1st, \$10, 2nd, \$7.50, 3rd, \$5.

[No gentleman or lady will be allowed to ride faster than a moderate gallop. Running will forfeit all claim to premium. All gentlemen contending for premiums in equestrianism will be required to exchange horses with one another at least once during the Exhibition.]

COMMITTEE. Jos. M. Wize, Chairman, T. J. Trapp, James Leamy, J. R. Brennan, J. W. Creighton, H. Freeman, S. Huff.

# MOREY'S

OPPOSITE  
MASONIC  
BLOCK for



Toys, Dolls, Fancy Goods,  
Flags, Lanterns, Books,  
Stationery, Music, etc. = =



Prices Right.



MOREY'S.

2 p.m. Sailors' Sports and Races.

3.30 p.m. Log Chopping Contest for the Championship of British Columbia.

**CONDITIONS.** The Contest is open to All Comers. Entries close with General Secretary, Saturday, September 23rd. 1893. An entrance fee of \$2 must accompany all entries. Competitors must provide their own axes. Each Competitor will be required to make three cuts in log 16 feet long and 14 inches at top. Shortest time to count.

First and second Prizes:—Gold Medals valued at \$60.

**JUDGES.** Andrew Haslam, Esq., M. P., Nanaimo; M. King, Esq., Victoria; Geo. Black, Esq., Vancouver; Alex. Charleson, Esq., Westminster; D. S. Hennesey, Esq., Westminster.

**COMMITTEE.** J. R. Brennan, P. Peebles, R. J. Rickman, L. A. Lewis, Alex. McNair. H. S. Rowling and D. Box.

Evening, 9 p.m. Citizens' Ball in Herring's Opera House. Tickets have been placed at \$1 each, and may be obtained from the following stewards:— Geo. D. Brymner, R. M. MacFarlane, A. J. Armstrong, R. J. Rickman, W. H. Keary, J. W. McColl.

**NOTE.** On account of the length of Friday's programme, and additional horse-racing events that are expected to take place, it is the intention to continue the programme so as to include Saturday. Special lists of races will likely be issued and distributed.

If you want Good Value in  
all kinds of

# FOOTWEAR

GO TO

## Sinclair & Co., Columbia St.,

As they have received a tremendous Stock of the best  
English, American and Canadian manufacture

And are Selling at Rock bottom Prices.

*Don't forget that the place to get good and  
cheap Printing is at Jackson's, "Columbian"  
Building. Goodbye. Tra-la-la!*

ALEXANDER PHILIP,  
Solicitor (Scotch) and Notary Public.

WM. H. GIBSON.

# PHILIP, GIBSON & COMPANY,

CONVEYANCERS,

Real Estate and Financial Agents,

46 LORNE ST, NEW WESTMINSTER.

CABLE ADDRESS . . . "PHILIP, NEW WESTMINSTER."

---

**M**ESSRS. PHILIP, GIBSON & CO. in placing before Investors a List of Properties on their books for sale, beg to offer some facts of a general character regarding the District of New Westminster, which should weigh with those who wish to purchase land for a home or for investment.

1. **CLIMATE.** The climate is throughout moderate and very healthy, in fact it is much the same as that of the British Isles.

2. **POPULATION.** The population of the Province is only about 100,000, located chiefly in this district and Victoria and Nanaimo. It is rapidly increasing. The elements which make its rapid growth certain, are:—(1) The extent and value of the undeveloped agricultural lands, much of which has been held idle by speculators, who are now selling off at very moderate prices; (2) The importance of the District commercially and in relation to the Pacific Trade—it being now in direct communication with China, Japan, India and Australasia; and (3) The immense wealth of the Province in respect of its mining, fishing and timber resources. Of the fishing resources the fact may be cited that the current canning season on the Fraser River alone will bring in from exports of fish about \$2,500,000.

3. **LAND.** Having personally examined nearly all the farms on the list, testimony can be given of their quality and condition. Almost all the land is of a very high class, and

under careful cultivation will yield immense crops. Even on half-cultivated Delta and meadow lands 3 tons of hay per acre is a very common crop, and that readily sells at \$12 per ton. The root crops and also the crops of oats grown are immense and the quality is first rate. Fruit growing, hop growing and dairying are to be the great staple industries of the District, and all these will yield liberal profits to the farmer. The great need of the District is settlers of a good class who would occupy and cultivate the vast areas of splendid land, and the following list will give some idea of the class of properties that can be purchased at the present time.

4. CITY AND SUBURBS OF NEW WESTMINSTER. Philip, Gibson & Company have confidence in recommending investment in City and Suburban properties. Though the interests of the Royal City have been neglected by the Government in the matter of perfecting the Fraser River as a channel for navigation, with her splendid fresh water highway, it is only necessary that her citizens stand by her rights at the proper time to have all she needs conceded. In any event New Westminster is the natural and only real centre for the agricultural, timber and fishing industries, and these will continue with her.

The water works and the electric lighting plant, owned by the City, are of nearly double the value to the citizens of the whole debt that is on the City, and they add largely to its otherwise great natural attractiveness.

---

TERMS. In almost every case, the purchaser of any of the properties on the following list, can get excellent terms of payment. In some cases existing mortgages for a considerable proportion can remain.

---

In corresponding regarding any of the properties it will be sufficient to refer to the number of the property on the list.

46 Lorne Street,  
New Westminster,  
15th September, 1893.

## List of Properties for Sale.

---

### DELTA DISTRICT.

---

1. 900 Acres. First-class Farm. Alluvial land, all fenced. Nearly 600 acres cultivated, rest ready for plough. Excellent dwelling house, 3 barns, garden, orchard of 400 trees. Good water. Extensive frontage to the Fraser River, with substantially built wharf and deep water.

Price per Acre, \$110.00.

---

2. 675 Acres. Beautifully-situated farm of alluvial land, almost all cultivated, and all substantially fenced. Dwelling house and good barn; good water at present, but splendid supply of water by gravitation can be put in for \$2000. About 7 miles of fencing and ditching.

Price per Acre, \$70.00.

---

3. 175 Acres of Timber land near Pt. Roberts. Easily cleared and valuable fruit land; timber of considerable value; good water supply. Delightful place for residence, and within short distance of Boundary Bay.

Price \$70.00 per acre.

---

4. Two Farms, 160 acres each; both within short distance of Ladner's Landing, on side of good road. Splendid alluvial land, all either cultivated or ready for plough, and well fenced. Convenient water supply. Well situated for sub-division into small holdings.

Price \$100.00 per Acre.

---

5. 680 Acres. Very fine alluvial Farm, of which 400 acres are drained and cultivated, and the rest is good pasture or hay land, all well fenced. Excellent dwelling house, large barn and other houses, all suitably arranged,

Extensive frontage on Boundary Bay where scows can be taken and loaded.

Price, only \$50.00 per Acre.

---

6. Three lots of 33, 150 and 160 Acres respectively in the Upper Delta, within short distance of Fraser River. Good land; easy to clear; south exposure. Beautifully situated for residence and fruit farming.

Price of whole, \$25 per acre.

---

7. 14 Acres in Upper Delta, having good stream running through and frontage to Fraser River. Stream of service for moderate driving power.

Price \$50.00 per Acre.

---

8. 166 Acres. Splendid Ranch on Fraser River, with half-mile of frontage. Mostly alluvial prairie land. Large part has been cultivated. May be sub-divided into small holdings. A Lot has just been sold for \$100 per acre.

Price \$50.00 per acre for whole lot.

---

9. 20 Acres near Fraser River; 6 acres cultivated, the rest easy to improve. All fenced; good road; alluvial soil.

Price \$950.

---

## LULU ISLAND.

---

10. 156 Acres. Good land for market gardening; easy to improve. Good River frontage. Near New Westminster.

Price \$75 per acre.

---

11. 44 Acres splendid land. Good river frontage; very light timber; near New Westminster. Price \$50 per acre.

---

## BURNABY DISTRICT.

---

12. 310 Acres. This is a very fine alluvial Farm, with

about a mile of frontage to the North Arm of Fraser River, situated within four miles of New Westminster by road and by river, and having excellent wharfage. About 60 acres are improved and producing first-class market garden products. Tenders have been received for clearing almost the whole of the remainder and preparing it for cultivation for \$30 per acre. Land well dyked from river and good ditches formed for drainage.

Price \$75 per acre.

13. 92 Acres in 21 and 10 acre lots, in North Arm District. All good bottom land, easy to clear and improve. Good road from city and frontage to river; good ditch formed for drainage. Excellent market garden land.

Price of river front land, \$75 per acre, and back land \$50 per acre.

14. 40 Acres of alluvial land; good frontage to river. Large house—almost completed—cost \$1,500. Land partly cleared.

Price \$4,000.

15. 160 Acres of good alluvial and black land, having half-mile river front; two miles from city. Easy to clear. Splendid farm for dairying or market gardens—might be sub-divided into small lots.

Price \$100.00 per acre for the whole.

16. 19 Acres splendid suburban property close to car line. Splendidly situated for residence and for fruit culture; convenient for sub-division into town lots; good road along 3 sides of land.

Price 400.00 per acre.

17. 160 Acres—Lot 11—situated on New Cumberland Road and on Burnaby Lake; sub-divided into lots varying from 5 to 20 acres. Excellent land; not difficult to clear, may be sold in lots at prices according to location, or as a whole at \$80.00 per acre.



18. Blocks 8, 9, 14, 18, 20 and 22 of lot 53; containing 96 city lots, altogether in blocks of three and four acres. Property very near the City and Tramway line. Excellent land for fruit and vegetable gardens, and for residence.  
Price only \$25.00 per lot.

19. 46 Acres of Lot 90 being Block I & II and containing 92 half-acre lots, besides several acres of streets which are cleared and ready for grading. Splendid location for residences on Douglas Road and convenient for Tramway. District taxes very low. Price only \$7,500. Two years ago these lots were listed at from \$275.00 to \$500.00 each.

20. 128 Lots 51 x 126 ft. on Blocks 2, 3, 5 and 6, subdivision of lot 90, adjoining Douglas Road; near Tramway line and convenient for the City. Good residential property. Street partly cleared. Single lots will be sold.  
Price from \$45.00 to \$80.00 per lot, according to location.

21. Lots of from 5 to 10 Acres each, part of lot 80; on side of Hastings Road, and also on side of New Royal Oak Road, near to Hastings Road Station of proposed new Railway. Splendid fruit land and delightful situation for residences; near to the Lakes of the District and near Tramway line.

Price \$100.00 per acre.

22. Several 10 Acre Lots, parts of lot 94 adjoining Royal Oak and Vancouver Roads. Splendid fruit lands and very easy to clear; convenient for Tramway line.

Price from \$80.00 to \$90.00 per acre.

23. 54 Acres excellent land near Vancouver Road and Tramway line, also near Hastings Townsite. Convenient for subdivision, suitable for market garden.

Price \$60.00 per acre.

---

## COQUITLAM DISTRICT.

---

24. 80 Acres part of Lot 356; good ranch on Austin Road, within 3 miles of City. Timber of considerable value. Land, when cleared, of good quality and excellent for fruit growing. May be sub-divided into small holdings if desired.

Price of whole \$30.00 per acre.

---

25. 80 Acres, part of Lot 368. Road giving access about to be constructed from Austin Road. Land partly cleared; all of good quality and easy to clear.

Price \$35 per acre.

---

26. Three lots of 160 Acres each, being Nos. 358, 362, and 363, all within easy distance of the city. Access meantime by good logging road; additional road about to be constructed. Price \$20 per acre.

---

27. About 150 Acres of sub-divisions of Lot 47, near McLaren Ross Mill, varying from 2 to 10 acres. Lots intersected by Pitt River Road. Land of excellent quality and not very difficult to clear. May be sold in lots at from \$100 to \$200 per acre, or as a whole for \$11,000.00.

---

28. 144 Acres. Part of Lot 380, adjoining Junction Station, intersected by Coquitlam River, and well located for good Manufactory and also for dwelling houses. Easy to clear, and timber of value for cordwood, etc. Good road through land. Price \$30 per acre.

---

29. 160 Acres, being Lot 384, good fruit land and comparatively easy to clear. Convenient for road and station.

Price only \$20 per acre.

---

30. 79 Acres, Lot 340. Five acres improved. Orchard of 150 fruit trees; good light loam, and not very heavy timber. Small house, stable and barn. Stock of 15 cattle,

2 horses, pigs, chickens, etc. Farm delightfully situated at mouth of Pitt River, good Wharfage, and good road to near house. Price of whole \$3,000.

31. 160 Acres, Splendid Ranch on Pitt Meadows; 125 acres meantime subject to overflow, (but to be dyked for about \$12.50 per acre, payable by instalments over 20 years). 25 acres improved and partly in cultivation, including small garden and orchard of 50 trees; about 10 acres alderwood which is of value for fuel, etc. Dwelling house, large barn, and other conveniences; good running creek through the land. Meadow land now grows immense crops of hay. Price \$40.00 per acre.

32. 217 Acres—Lot 371. This excellent ranch is situated near Port Moody; about \$2,000 have been spent on improving it. Land of good quality, whole comparatively easy to clear. Coal out crops found near at hand. Price \$25.00 per acre.

33. 30 Acres, part of Lot 347; with all improvements and stock. Improvements include dwelling house, large barn, chicken house, etc., large amount of fencing and clearing. 500 fruit trees and 1,200 strawberry plants. Good creek running through land. Five chains of water front to bay, good wharf close at hand, and a new road about to be constructed. Eight cows, pigs, etc. Price of whole \$3,700.

34. 40 Acres intersected by Clarke Road being part of Lot 377 near Port Moody Bay. Good house which cost \$800; good garden with several hundred fruit trees and small fruit bushes. Almost all the land has been cleared. Magnificent view from the house of bay, and of mountains. Price \$1,500 over and above a mortgage for a like amount.

35. Good House and two city lots in Port Moody townsite. House contains 8 rooms, and hard finished. Cost \$1,200. Excellent view of bay and mountains beyond. Price only \$1,000.

## MAPLE RIDGE.

36. 160 Acres. 100 acres of meadow land and 60 sloping gently to it, covered with vine maple and other light timber, sufficient cedar for building purposes. Meadow will be dyked before next high water, at rate of about \$10 per acre, payable over 20 years. Soil excellent. Splendid location, about 12 miles from River and Station; good road.  
Price \$30.00 per acre.

37. 80 Acres of splendid dark clayey loam, 15 to 20 acres cleared, the rest lightly timbered. About 2 miles from Railway and River. Well watered.  
Price \$37.50 per acre.

38. 40 Acres on Lot 249,  $\frac{1}{2}$  mile from River and near Station; good road. Land level and could be cleared by contract at \$15 per acre. Soil light loam; adjoining land of similar quality, cleared, recently sold at from \$60 to \$133 per acre.  
Price \$25 per acre.

39. 160 Acres S.W.  $\frac{1}{4}$  Sec. 21, T. 12. About 25 acres cleared, timber chiefly alder with little fir and cedar. Soil good clayey loam. Small frame house and barn. Creek crosses the corner of place. One and three-quarter miles from Railway Station and Wharf, good road.  
Price \$5,500.

40. 300 Acres W.  $\frac{1}{2}$ , S. 20, T. 12. Splendid land, part level and part sloping gently to the Lillooet River. Soil varying from heavy clay loam on S. end, to black loam on N. end. About 30 acres on N. end drained, and in cultivation, and 10 acres cleared and in hay. The timber is chiefly light and easy to clear. A very good dwelling house of 9 rooms, hard finished; good barn, stable, root house, dairy, etc. Implements; 4 cows, 3 horses and other stock; 400 fruit trees beginning to bear. Building implements and stock worth at moderate valuation \$3,750. Good roads on 2 sides,  $\frac{1}{4}$  mile from Railway Station and Wharf. Owner selling on account of bad health.

Price of whole \$12,000.

41. 80 Acres—Lot 399 adjoining No. 40, and similar land; 10 acres cleared, cultivated and seeded down, 5 acres more partly cleared. Timber on S. end would almost pay cost of clearing; on N. end very light. A creek, valuable for power and drainage, crosses the place. Frame house 12 x 18 ft., barn 30 x 50 ft., very good.  
Price \$3,000.

42. 160 Acres S.W.  $\frac{1}{4}$  Sec. 8, T. 15; 12 acres under cultivation and 20 acres cleared, seeded down and fenced. About 1 acre of good garden, producing splendid fruits and vegetables, the rest is almost all easy to clear; a small creek through it. Soil excellent brown to dark clay loam. Capital place for fruit; 1 mile from Railway Station and Wharf; good road. A very good house, 5 rooms cost \$1,300. Barn, stable, etc. 3 good cows, yoke of oxen and poultry; implements, 75 good fruit trees. Building implements and stock worth about \$2,700. A beautiful location.  
Price \$6,500.

43. 387 Acres—Lot 443 and 437 (Stave River). Excellent stock ranch—greater part is good prairieland, subject to overflow, but easily dyked. Good house of two storeys, in lovely situation, which cost \$1,600, and is nearly new. First-class hunting and fishing in immediate neighborhood.  
Price \$20.00 per acre.

## SURREY DISTRICT.

44. 2,400 Acres in Lots averaging about 40 acres. These lands are the property of the B. C. Drainage and Dyking Company (Limited), and form part of the splendid Alluvial Land of the Pitt Meadows. They have been fully reclaimed by the construction of a series of very substantial Dykes, and they are now open to settlers. There is no timber on the land. The whole is practically ready for cultivation, and can be cropped the first year. The soil is of the very best, and will grow immense crops of hops, roots, grain, hay, or garden produce. The best access to

the lands, meantime is by Pitt and Lillooet Rivers, which are navigable, but good roads are being constructed to give land communication to the whole property.

The price for outside Lots is \$60 per acre, and for inside Lots \$50 per acre, payable  $\frac{1}{4}$ th cash, and the balance by equal instalments in 1, 2 and  $2\frac{1}{2}$  years from date of sale. A rebate of 10 per cent. will be allowed to the purchaser on the selling price of all lands placed under crop within one year from date of sale.

45. 160 Acres, N.W.  $\frac{1}{4}$  Sec. 14, T. 2; 10 acres cleared. All alder bottom land, sloping slightly to E. Drainage easy, no overflow. Soil richest black loam. Frame house. Good road. About 7 miles from New Westminster.

Price \$2,650.

46. 160 Acres; 8 acres cleared and seeded down. About 30 acres light soil on rising ground, the rest black loam bottom land, part prairie and part alder bottom. Will make a fine farm.

Price \$4,800.

47. 160 Acres good land, lightly timbered. On Scott Road.

\$17.00 per acre.

48. 80 Acres  $\frac{2}{3}$  alder bottom, the rest lighter soil sloping to it. On good road.

Price \$2,000.

49. 70 Acres rich bottom land, about  $\frac{1}{3}$  covered with fir, and the rest alder.

Price \$2,800.

50. 40 Acres of finest black loam. Timber alder, vine maple, spruce, balsam, etc.

\$1,000.

51. 160 Acres N. E.  $\frac{1}{4}$  Sec. 36, T. 1 80 acres prairie, 12 acres improved, 25 acres of heavy timber, the rest light timber and brush. A very neat cabin 16 x 20 ft. Small barn. The Nicomekl flows through the place; over which is a good bridge on the Coast Meridian Road. Produce can be shipped by scow. Soil good loam.

Price \$3,200.

52. 80 Acres, S.  $\frac{1}{2}$  of N.W.  $\frac{1}{4}$  Sec. 31, T. 7. 60 acres improved, 30 of which have been ploughed. 8 acres are well drained; about 20 to 25 acres of timber medium. A spring on the place. Good house, 7 rooms; first-class barn 52 x 72 ft. Soil of splendid peaty quality, noted for producing potatoes, heavy hay, and oat crops, etc.

Price \$50 per acre.

53. 220 Acres. One of the best stretches of land in Mud Bay District. All in cultivation, yielding very heavy crops of oats and hay. Best shipping facilities.

Price \$70.00 per acre.

54. 160 Acres; 25 acres improved, rest fern lands, The whole dyked. On the Serpentine River.

Price \$26 per acre.

55. About 200 Acres; a fine farm on Mud Bay flats. About 20 acres in crop and a large area in hay and pasture, some yielding as much as 4 tons of hay per acre. The unimproved is alder bottom and light brush. A fine variety of soils of excellent quality. Well dyked and drained. A good house, and small orchard; splendid barns, etc. Excellent shipping facilities. Good water supply.

Price \$12,000.

56. 154 Acres; about 12 acres in cultivation, 50 acres of prairie land easy to cultivate, about 30 acres lightly timbered, and the rest is the richest alder bottom. A creek flows through the place. Small house and barn 50 x 30 ft. 24 fruit trees. Capital location. Excellent Road.

Price \$30 per acre.

57. 60 Acres of good land on Yale Road—one mile from Brownsville—8 acres cleared. May be sold in acre lots.

Price \$100 per acre for the whole.

58. 160 Acres of good land situated half mile from Hall's Prairie Road. 5 acres slashed and burned; 50 acres low land, covered with timber, remainder up land of good dark loam—easily cleared.

Price \$13 per acre.

## LANGLEY.

59. 127 Acres; one of the best farms on Langley Prairie. About 100 splendid prairie land, all properly cleared and cultivated, sufficient slope for drainage. Soil is black clay loam, very fertile. Rest easy to clear. Creek crosses the place. Good garden and orchard. Good house of five rooms; 2 splendid barns. The farm produces about 180 tons of hay per annum, besides about 30 tons of oats, and carries a large stock of cattle and sheep.

Price \$7,300.

60. 80 Acres, of which 30 acres is ready for cultivation, other 10 cleared, and remainder slashed. Soil varied and of fair quality. Small house. Price \$2,100.

61. 160 Acres; 12 acres cultivated and few more slashed. Soil clayey loam. Timber light. Small house, etc. Price \$40 per acre.

62. 160 Acres bush land, mixed timber, not heavy clearing. Soil clayey to light. Price \$2,500.

63. 20 Acres, lightly timbered, splendid soil. Good road. Price \$18 per acre.

64. 160 Acres; 18 acres cleared and 12 acres seeded and fenced. Orchard of 100 fruit trees. The soil is good throughout, brown clay loam, with some splendid bottom land very easily drained, no waste land. Timber chiefly alder, with some valuable cedar, not heavy clearing. Neat log house 13 x 18 ft.; barn 25 x 40 ft.; stable, etc. Good road 5 miles from river—near Yale road.

Price \$15 per acre.

65. 50 Acres on N.W.  $\frac{1}{4}$  Sec. 25, T. 10; close to Yale Road, and store, P.O. and Telegraph Office. About 25 acres of flat bottom land, easy to drain, splendid soil, covered with light brush, the rest is good brown clay loam. Timber chiefly alder. Only \$15 per acre.



66. 160 Acres; 12 acres cleared, in timothy and clover. Garden orchard of 200 fruit trees. Very good clay loam. Easy to clear. Small house, barn, etc. Price \$4,200.

67. 160 Acres; 10 acres cleared, excellent soil, easy to clear; number of fruit trees. Small house, barn, etc. Price \$3,200.

68. 80 Acres bush land. Soil brown and black loam, timbered chiefly with alder, near Yale Road, Store, Post Office, etc. Price \$1,440.

69. 120 Acres; 5 acres improved and fenced. Soil dark clay loam, light timber. On Yale Road. Price \$2,250.

70. 80 Acres, being North half of S.W.  $\frac{1}{4}$  of 26, T. 11. Excellent small farm, 12 acres cleared and in cultivation, all good, rich loam and easily cleared. Good house and orchard. Large creek suitable for driving power. Half-mile from West's Landing. Price \$35 per acre.

71. 160 Acres, being N.W.  $\frac{1}{4}$  of Sec. 24, T. 11. Situated one mile from West's Landing. 30 acres slashed and burned; 50 acres more easily cleared, rest heavily timbered. All good soil. Small log house. Price \$15 per acre.

72. 160 Acres S. W.  $\frac{1}{4}$  of Sec. 6, T. 10. 30 acres partly cleared and fenced. House and other buildings. Good soil. Improvements cost over \$1,000. Situated  $6\frac{1}{2}$  miles from Blaine. Price \$1,440.

### MATSQUI DISTRICT.

73. 90 Acres, being N.  $\frac{1}{2}$  of N. W.  $\frac{1}{4}$  Sec. 14, T. 14, etc., 20 acres cleared, fenced and seeded down. Soil excellent brown clay loam. Good bearing orchard of 100 fruit trees. Timber light, chiefly alder. Good log house 20 x 20 ft.; barn 20 x 35 ft., and other buildings. Price \$2,000.

74. 80 Acres; S.  $\frac{1}{2}$  of S.W.  $\frac{1}{4}$  Sec. 15, T. 14. 11 acres cleared and seeded down. Small log cabin; hay shed and root house. Soil good clay loam. Timber light, chiefly alder.  $2\frac{1}{2}$  miles from store and boat landing.

Price \$20 per acre.

---

75. 160 Acres; S.E.  $\frac{1}{4}$  Sec. 15, T. 14. Two clearings on this lot, with houses on each, besides other buildings. About 10 acres altogether have been cultivated and seeded down; two orchards of young trees. Soil good clay loam. Timber mixed.  $1\frac{1}{2}$  miles from store and boat landing. May be sold in two sections.

Price \$18.50 per acre.

---

76. 2 Lots, one 40 to 134 acres and another 80 acres, good land, timber light. Soil clay loam, excellent for fruit. Good situations. One lot good river frontage.

\$20 per acre.

---

77. 40 Acres, on N.E.  $\frac{1}{4}$  Sec. 11, T. 14.; on trunk road near wharf. Soil good clay loam. Timber chiefly alder, a little fir along side of road, valuable as cordwood.

Price \$25 per acre.

---

78. 75 Acres on N. end of Lot 407; 50 acres of prairie land of excellent quality, not overflown, producing splendid crops of finest hay. The rest of the land slopes gently to the prairie, and on it there is a little brush. The soil is a very rich loam. About  $1\frac{1}{2}$  miles from river by road.

Price only \$25 per acre.

---

79. 179 Acres (Lot 404), of which 63 acres are prairie, partly overflown. 50 acres highland, under cultivation, rest light brush and copse. Dwelling house, barn, etc.

Price \$35 per acre.

---

80. 25 Acres (part Sec. 20, T. 13) alder bottom land, close to Yale Road; good spring water on land. Seller will slash 5 acres for the purchaser.

Price \$25 per acre.

---

81. 160 Acres of splendid farm land; 40 acres in cultivation. Orchard of 400 fruit trees, all bearing. 120 acres

good clay loam, lightly timbered. Good dwelling house; large barn, and other buildings. Excellent spring water.  $1\frac{1}{2}$  miles from landing. Price \$5,500.

82. 150 Acres; 70 of which are splendid open prairie, the rest sloping to it, covered with brush. Soil throughout best quality. Creek through lot. Slight overflow on part. Good road. Price \$30 per acre.

83. 150 Acres; 60 acres of fine prairie, the rest sloping to it, easy to clear. Splendid soil. A little subject to overflow. \$35 per acre.

### UPPER SUMAS DISTRICT.

84. 80 Acres (E.  $\frac{1}{2}$  S.E.  $\frac{1}{4}$  Sec. 12, T. 16); good prairie land covered with light brush, all subject to occasional overflow, but about to be dyked at moderate expense.  $2\frac{1}{4}$  miles from Huntingdon Station. Price \$30 per acre.

85. 80 Acres (S.  $\frac{1}{2}$  of S.W.  $\frac{1}{4}$  of Sec. 16, T. 19); good prairie land clear of timber, and good hay land; 4 acres of higher land offer excellent situation for house and garden. Price only \$1,750.

Also some first-class lots varying from 14 to 360 acres in Chilliwack, Sumas, Nicomen and Dewdney Districts, all at very moderate prices.

### CITY OF NEW WESTMINSTER LOTS.

86. 12 Acres, being Suburban Lots 2, 3 and 4, of Blk. 14, meantime occupied as a Dairy Ranch. House cost \$1,500. 6 acres improved. Good creek running through land, suitable for manufacturing purposes. Price \$9,000.

87. 8 Acres, being Suburban Lot 8, Blk. 14; situate on 4th Street and 10th Avenue. Price \$3,500 for whole. A half may be sold on good terms.

---

88. 5 Acres on Cumberland Street; partly cleared and fenced. Magnificent view of mountains and river. Price \$4,500.

---

Also a number of excellent City and Suburban Lots at prices ranging from \$75 to \$10,000 each, and several Dwelling Houses in good situations, at moderate prices.

46 Lorne St., New Westminster, B. C.



