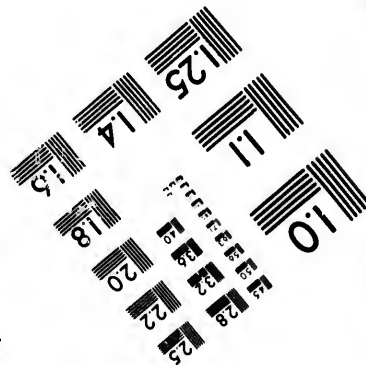
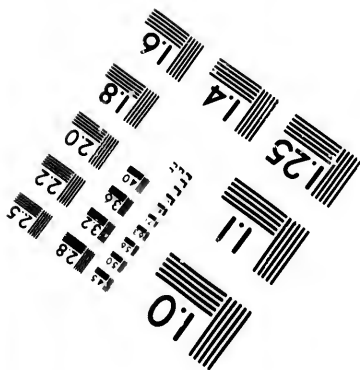
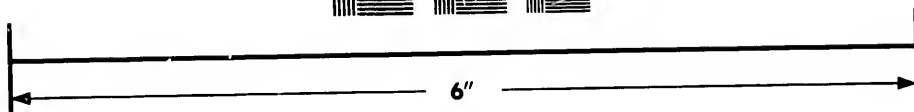
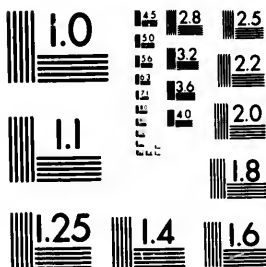


**IMAGE EVALUATION
TEST TARGET (MT-3)**



**Photographic
Sciences
Corporation**

23 WEST MAIN STREET
WEBSTER, N.Y. 14580
(716) 872-4503



**CIHM/ICMH
Microfiche
Series.**

**CIHM/ICMH
Collection de
microfiches.**



Canadian Institute for Historical Microreproductions / Institut canadien de microreproductions historiques



© 1981

Technical and Bibliographic Notes/Notes techniques et bibliographiques

The Institute has attempted to obtain the best original copy available for filming. Features of this copy which may be bibliographically unique, which may alter any of the images in the reproduction, or which may significantly change the usual method of filming, are checked below.

L'Institut a microfilmé le meilleur exemplaire qu'il lui a été possible de se procurer. Les détails de cet exemplaire qui sont peut-être uniques du point de vue bibliographique, qui peuvent modifier une image reproduite, ou qui peuvent exiger une modification dans la méthode normale de filmage sont indiqués ci-dessous.

- Coloured covers/
Couverture de couleur
- Covers damaged/
Couverture endommagée
- Covers restored and/or laminated/
Couverture restaurée et/ou pelliculée
- Cover title missing/
Le titre de couverture manque
- Coloured maps/
Cartes géographiques en couleur
- Coloured ink (i.e. other than blue or black)/
Encre de couleur (i.e. autre que bleue ou noire)
- Coloured plates and/or illustrations/
Planches et/ou illustrations en couleur
- Bound with other material/
Relié avec d'autres documents
- Tight binding may cause shadows or distortion along interior margin/
La reliure serrée peut causer de l'ombre ou de la distorsion le long de la marge intérieure
- Blank leaves added during restoration may appear within the text. Whenever possible, these have been omitted from filming/
Il se peut que certaines pages blanches ajoutées lors d'une restauration apparaissent dans le texte, mais, lorsque cela était possible, ces pages n'ont pas été filmées.
- Additional comments:
Commentaires supplémentaires:

- Coloured pages/
Pages de couleur
- Pages damaged/
Pages endommagées
- Pages restored and/or laminated/
Pages restaurées et/ou pelliculées
- Pages discoloured, stained or foxed/
Pages décolorées, tachetées ou piquées
- Pages detached/
Pages détachées
- Showthrough/
Transparence
- Quality of print varies/
Qualité inégale de l'impression
- Includes supplementary material/
Comprend du matériel supplémentaire
- Only edition available/
Seule édition disponible
- Pages wholly or partially obscured by errata slips, tissues, etc., have been refilmed to ensure the best possible image/
Les pages totalement ou partiellement obscurcies par un feuillet d'errata, une pelure, etc., ont été filmées à nouveau de façon à obtenir la meilleure image possible.

This item is filmed at the reduction ratio checked below/
Ce document est filmé au taux de réduction indiqué ci-dessous.

10X	14X	18X	22X	26X	30X
<input type="checkbox"/>	<input type="checkbox"/>	<input checked="" type="checkbox"/>	<input type="checkbox"/>	<input type="checkbox"/>	<input type="checkbox"/>
12X	16X	20X	24X	28X	32X

The copy filmed here has been reproduced thanks to the generosity of:

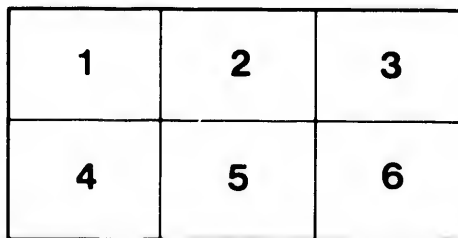
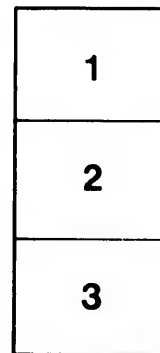
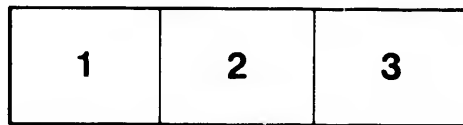
Library Division
Provincial Archives of British Columbia

The images appearing here are the best quality possible considering the condition and legibility of the original copy and in keeping with the filming contract specifications.

Original copies in printed paper covers are filmed beginning with the front cover and ending on the last page with a printed or illustrated impression, or the back cover when appropriate. All other original copies are filmed beginning on the first page with a printed or illustrated impression, and ending on the last page with a printed or illustrated impression.

The last recorded frame on each microfiche shall contain the symbol \rightarrow (meaning "CONTINUED"), or the symbol ∇ (meaning "END"), whichever applies.

Maps, plates, charts, etc., may be filmed at different reduction ratios. Those too large to be entirely included in one exposure are filmed beginning in the upper left hand corner, left to right and top to bottom, as many frames as required. The following diagrams illustrate the method:



L'exemplaire filmé fut reproduit grâce à la générosité de:

Library Division
Provincial Archives of British Columbia

Les images suivantes ont été reproduites avec le plus grand soin, compte tenu de la condition et de la netteté de l'exemplaire filmé, et en conformité avec les conditions du contrat de filmage.

Les exemplaires originaux dont la couverture en papier est imprimée sont filmés en commençant par le premier plat et en terminant soit par la dernière page qui comporte une empreinte d'impression ou d'illustration, soit par le second plat, selon le cas. Tous les autres exemplaires originaux sont filmés en commençant par la première page qui comporte une empreinte d'impression ou d'illustration et en terminant par la dernière page qui comporte une telle empreinte.

Un des symboles suivants apparaîtra sur la dernière image de chaque microfiche, selon le cas: le symbole \rightarrow signifie "A SUIVRE", le symbole ∇ signifie "FIN".

Les cartes, planches, tableaux, etc., peuvent être filmés à des taux de réduction différents. Lorsque le document est trop grand pour être reproduit en un seul cliché, il est filmé à partir de l'angle supérieur gauche, de gauche à droite, et de haut en bas, en prenant le nombre d'images nécessaire. Les diagrammes suivants illustrent la méthode.

errata
to

pelure,
n à

NWp
971.947
G997

Gymkhana Meeting

VICTORIA DRIVING PARK

Saturday, 26th of October, 1889

AT 2 P. M.

COMMITTEE.

THE HON. C. E. POOLEY, Q. C., M. P. P., Chairman.

R. E. JACKSON, ESQ.

W. A. WARD, ESQ.

CAPTAIN ST. CLAIR, R. N.

LIEUT. THYNNE, R. N.

CAPTAIN ANNESLEY, R. N.

LIEUT. WARRENDER, R. N.

LIEUT.-COL. PRIOR.

B. H. TYRWHITT DRAKE, ESQ.

DR. DUNCAN, R. C. A.

H. HAYES, ESQ., Hon. Secretary

JUDGES.

The Hon. Mr. Justice Drake ; R. E. Jackson, Esq. ; Capt. Hammet, R. N.

STARTER—Lieut.-Col. Holmes, R. C. A.

CLERK OF THE COURSE—Hon. C. E. Pooley.

THE COLONIST PRINT.

PROVINCIAL ARCHIVES OF B. C.

EVENTS.

1. CHANGE NUMBER RACE—Bare backed, with bridles; competitors mount when the Flag falls, ride over two hurdles to a post 150 yards distant, dismount, odds and evens to change horses, and ride home over two hurdles. All the odd numbers, both riders and horses, will bear a distinguishing mark.

2. POSTILLION RACE—Once round the course; four hurdles to be taken; each competitor to ride one horse and lead another; must ride in with the led horse.

3. HALF MILE FLAT RACE—For men belonging to Her Majesty's services. 1st and 2nd Prizes.

4. BALL AND BUCKET RACE—Saddle and bridle allowed. When the Flag falls each competitor to ride at full gallop past a post about 100 yards distant, on which will be placed a ball, which latter must be picked up and dropped into a bucket about 20 yards from post. Each competitor allowed three tries. Ties to run off.

5. TANDEM RACE—Once round the course; one horse to be ridden, the other driven.

6. SIDE SADDLE RACE—LADIES NOMINATION. Once round the course over four hurdles; skirt and bonnet to be worn; each competitor to give the name of the Lady he is nominated by to the Secretary with his entry.

7. BALACLAVA MELEE—Teams of four with saddles and bridles; each competitor to wear a helmet with plumes and to carry a single stick. The team losing its plumes first is beaten.

8. HURDLE RACE—Once round the course; four flights of hurdles three feet high, well brushed.

9. TENT PEGGING if there be time.

Entries unless otherwise stated open to members of the Union, Lawn Tennis, Cricket & Football Clubs and their sons and brothers, and officers of H. M. services.

Post Entries, \$1.50.

The "Assembly" will be sounded five minutes before each race.

No limit to size of horses.

Horses to be entered by their riders.

Prizes in all events to be sweeps, except in the Flat Race and in the Ladies' Nomination Race, in which the Prize will be made up to \$25.00.

Decision of the Judges to be absolutely final.

ADMISSION TO THE GROUND 50 CENTS.

ENTRIES.

1. CHANGE NUMBER RACE—T. U. Thynne, Tommy; G. S. I. Warrender, Buffalo Bill; Captain Annesley, Diver; Cecil Ward, Robert the Devil; G. M. Paine, Kitty; M. G. Blanchard, Kitty.

2. POSTILLION RACE—W. D. Church, Kitty and Fox; T. U. Thynne, Tommy and Little Lady; G. S. I. Warrender, Buffalo Bill and Brer Rabbit; J. A. Duncan, Croaghpatrick and Irish Maid.

3. FLAT RACE—Post entries.

Incuse
4. BALL AND BUCKET RACE—W. Tyrwhitt Drake, Tommy; T. U. Thynne, Little Lady; G. S. I. Warrender, Buffalo Bill; Captain Annesley, Diver; J. D. Prentice, Rocket; E. B. Drummond, R. Burns; G. M. Paine, Gladiateur; H. Kingsford, Kitty; J. A. Duncan, Constance; M. G. Blanchard, Kitty; ~~F. B. Pemberton, Marie Stuart.~~

5. TANDEM RACE—W. D. Church, Kitty and Fox; T. U. Thynne, Tommy and Little Lady; G. S. I. Warrender, Xerxes and Artaxerxes; J. A. Duncan, Croaghpatrick and Irish Maid. *F. B. Pemberton*

6. SIDE SADDLE RACE—W. D. Church, Kitty; T. U. Thynne, Little Lady; G. S. I. Warrender, Buffalo Bill; Cecil Ward, Ayrshire; B. H. Tyrwhitt Drake, Donovan; E. B. Drummond, R. Burns; G. M. Paine, Kitty; J. A. Duncan, Constance.

7. BALACLAVA MELEE—Post entrie.

8. HURDLE RACE—W. Tyrwhitt Drake, Tommy; W. D. Church, Kitty; Captain Annesley, Diver; J. D. Prentice, Rocket; E. B. Drummond, R. Burns; R. H. Armstrong, Billy; J. A. Duncan, Croaghpatrick.

