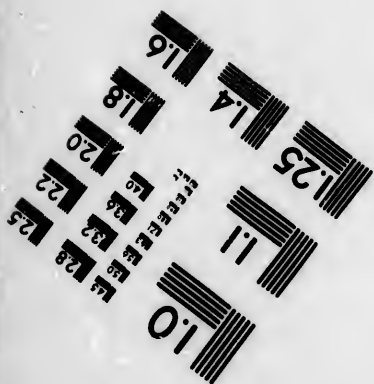
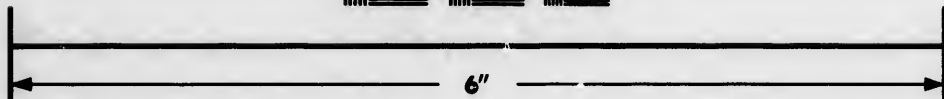
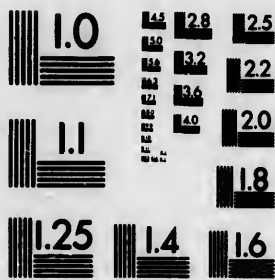


**IMAGE EVALUATION
TEST TARGET (MT-3)**



**Photographic
Sciences
Corporation**

23 WEST MAIN STREET
WEBSTER, N.Y. 14580
(716) 872-4503

1.8
2.0
2.2
2.5

**CIHM/ICMH
Microfiche
Series.**

**CIHM/ICMH
Collection de
microfiches.**



Canadian Institute for Historical Microreproductions / Institut canadien de microreproductions historiques

01
11

© 1985

Technical and Bibliographic Notes/Notes techniques et bibliographiques

The Institute has attempted to obtain the best original copy available for filming. Features of this copy which may be bibliographically unique, which may alter any of the images in the reproduction, or which may significantly change the usual method of filming, are checked below.

L'institut a microfilmé le meilleur exemplaire qu'il lui a été possible de se procurer. Les détails de cet exemplaire qui sont peut-être uniques du point de vue bibliographique, qui peuvent modifier une image reproduite, ou qui peuvent exiger une modification dans la méthode normale de filmage sont indiqués ci-dessous.

- Coloured covers/
Couverture de couleur
- Covers damaged/
Couverture endommagée
- Covers restored and/or laminated/
Couverture restaurée et/ou pelliculée
- Cover title missing/
Le titre de couverture manque
- Coloured maps/
Cartes géographiques en couleur
- Coloured ink (i.e. other than blue or black)/
Encre de couleur (i.e. autre que bleue ou noire)
- Coloured plates and/or illustrations/
Planches et/ou illustrations en couleur
- Bound with other material/
Relié avec d'autres documents
- Tight binding may cause shadows or distortion along interior margin/
La reliure serrée peut causer de l'ombre ou de la distorsion le long de la marge intérieure
- Blank leaves added during restoration may appear within the text. Whenever possible, these have been omitted from filming/
Il se peut que certaines pages blanches ajoutées lors d'une restauration apparaissent dans le texte, mais, lorsque cela était possible, ces pages n'ont pas été filmées.
- Additional comments:/
Commentaires supplémentaires:

- Coloured pages/
Pages de couleur
- Pages damaged/
Pages endommagées
- Pages restored and/or laminated/
Pages restaurées et/ou pelliculées
- Pages discoloured, stained or foxed/
Pages décolorées, tachetées ou piquées
- Pages detached/
Pages détachées
- Showthrough/
Transparence
- Quality of print varies/
Qualité inégale de l'impression
- Includes supplementary material/
Comprend du matériel supplémentaire
- Only edition available/
Seule édition disponible
- Pages wholly or partially obscured by errata slips, tissues, etc., have been refilmed to ensure the best possible image/
Les pages totalement ou partiellement obscurcies par un feuillet d'errata, une pelure, etc., ont été filmées à nouveau de façon à obtenir la meilleure image possible.

This item is filmed at the reduction ratio checked below/
Ce document est filmé au taux de réduction indiqué ci-dessous.

10X	12X	14X	16X	18X	20X	22X	24X	26X	28X	30X	32X
					✓						

The copy filmed here has been reproduced thanks to the generosity of:

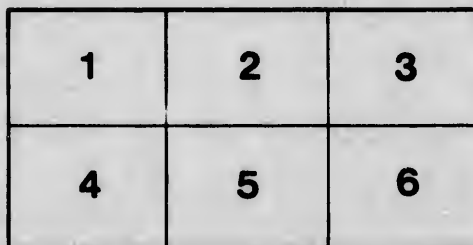
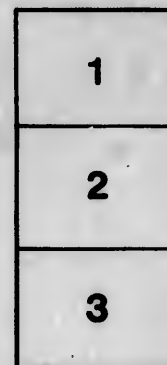
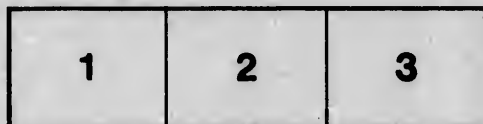
Nova Scotia Public Archives

The images appearing here are the best quality possible considering the condition and legibility of the original copy and in keeping with the filming contract specifications.

Original copies in printed paper covers are filmed beginning with the front cover and ending on the last page with a printed or illustrated impression, or the back cover when appropriate. All other original copies are filmed beginning on the first page with a printed or illustrated impression, and ending on the last page with a printed or illustrated impression.

The last recorded frame on each microfiche shall contain the symbol \rightarrow (meaning "CONTINUED"), or the symbol ∇ (meaning "END"), whichever applies.

Maps, plates, charts, etc., may be filmed at different reduction ratios. Those too large to be entirely included in one exposure are filmed beginning in the upper left hand corner, left to right and top to bottom, as many frames as required. The following diagrams illustrate the method:



L'exemplaire filmé fut reproduit grâce à la générosité de:

Nova Scotia Public Archives

Les images suivantes ont été reproduites avec le plus grand soin, compte tenu de la condition et de la netteté de l'exemplaire filmé, et en conformité avec les conditions du contrat de filmage.

Les exemplaires originaux dont la couverture en papier est imprimée sont filmés en commençant par le premier plat et en terminant soit par la dernière page qui comporte une empreinte d'impression ou d'illustration, soit par le second plat, selon le cas. Tous les autres exemplaires originaux sont filmés en commençant par la première page qui comporte une empreinte d'impression ou d'illustration et en terminant par la dernière page qui comporte une telle empreinte.

Un des symboles suivants apparaîtra sur la dernière image de chaque microfiche, selon le cas: le symbole \rightarrow signifie "A SUIVRE", le symbole ∇ signifie "FIN".

Les cartes, planches, tableaux, etc., peuvent être filmés à des taux de réduction différents. Lorsque le document est trop grand pour être reproduit en un seul cliché, il est filmé à partir de l'angle supérieur gauche, de gauche à droite, et de haut en bas, en prenant le nombre d'images nécessaire. Les diagrammes suivants illustrent la méthode.

détails
du
modifier
une
image

as

errata
to

pelure.
on à

32X

NI

BE

THE
NEWFOUNDLAND ALMANAC

FOR THE THE YEAR OF 'OUR LORD

1852:

BEING BISSEXTILE, OR LEAP YEAR, AND THE
FIFTEENTH YEAR OF THE REIGN OF

HER MAJESTY QUEEN VICTORIA.

COMPILED, PRINTED AND PUBLISHED BY

JOSEPH WOODS.

ST. JOHN'S, NEWFOUNDLAND.

MDCCCLI.

Public Archives of Nova Scotia
HALIFAX, N. S.

ALPHABETICALLY ARRANGED

OF THE

1881

THE

NEW

BY

J. H. M. M. M.

NEW YORK

1881

NEW YORK

1881

E

BEIN

H

to

THE
NEWFOUNDLAND ALMANAC

FOR THE THE YEAR OF OUR LORD

1852 :

BEING BISSEXTILE, OR LEAP YEAR, AND THE
FIFTEENTH YEAR OF THE REIGN OF

HER MAJESTY QUEEN VICTORIA.

COMPILED, PRINTED AND PUBLISHED BY
JOSEPH WOODS.

ST. JOHN'S, NEWFOUNDLAND.

MDCCCLI.

• CONTENTS:

Eclipses of the Sun and Moon	•	•	•
Principal Articles of the Calendar	•	•	•
Calendar	•	•	•
Meantime of Sun-rise and Sun-set	•	•	•
Variation of the Compass	•	•	•
Discount Table and Interest Table	•	•	•
Dollars in Sterling at 4s 4d	•	•	•
Sterling in Currency	•	•	•
Currency in Sterling	•	•	•
Officers of the Civil Government	•	•	•
Law Department	•	•	•
Customs Department	•	•	•
Officers of the Colonial Revenue	•	•	•
Military Department	•	•	•
Post Office Department	•	•	•
Ecclesiastical Department	•	•	•
Electoral Districts	•	•	•
Governors of Newfoundland	•	•	•
Charitable Societies, Public Companies, &c	•	•	•
Acts passed by the Legislature	•	•	•
Present Governors of other North American Colonies	•	•	•
Vessels Entered and Cleared at the Island of Newfoundland, for the Year ended January 5th, 1851	•	•	•
Consolidated Account of Goods imported, with value and duty	•	•	•
Statement of Receipts and Expenditure for the year ended December 31, 1850	•	•	•
Newfoundland Tariff of Duties	•	•	•
Length of Sessions of Newfoundland General Assembly	•	•	•
Census, &c, &c.	•	•	•
Quantity and Value of Articles Exported	•	•	•
Colonial Revenue and Expenditure for the years 1848, '49 & '50	•	•	•
Value of Imports and Exports in 1847, '48, '49 and '50	•	•	•
Outfit for the Seal Fishery in 1850 and 1851	•	•	•
Ships Built in the Colony	•	•	•
Ships Owned and Registered in the Colony	•	•	•
Royal Family of England	•	•	•
Her Majesty's Ministry	•	•	•
MISCELLANEOUS.			
Volcanoes	5	Coal Mines	15
Lighthouses	6	Self-reliance	16
British Army and Navy	7	Comparative Democracy of	
U States Militia, Army & Navy	7	England France and the U-	
Emigration	8	nited States	18
Insane persons in England and		Factories in Great Britain	19
Wales	8	Cost of the Mexican War	19
How to Know a Fool	10	Progress of Manufactures	20
Domestic Economy	14	Railroads United States.	20

THE
for the
found
encour
ature,
ar pul
him to
work,
cheap
to sup
credita
and gi
statistic
a char
Legisl
crease
very r
the wo
precia
the pu
The
which
Harb
astro
the k
all th
matic

TO THE PUBLIC.

THE ALMANAC for 1852, which the Compiler now presents for the use and information of his fellow Colonists, will be found in every way superior to its predecessor of 1851. The encouragement which he received last year from the Legislature, by the revival of the annual grant to sustain the regular publication of the Newfoundland Almanac, has caused him to be more circumspect respecting the appearance of the work, the character and quantity of its contents, and the cheapness of its issue. He has incurred considerable expense to supply a local ANNUAL of useful information, in a style creditable to the Colony; and he has devoted much time, and given his closest attention to the collection of such statistical, astronomical, and other information as would give a character of respectability to the work. He relies upon the Legislature for its continued aid, on the ground of the increased expense to which he has subjected himself, and the very reduced price of *One Shilling*, at which he now issues the work; and he hopes that the public may evince their appreciation of his labour by the general and rapid sale which the publication shall experience.

The Compiler gratefully acknowledges the assistance which he has received from W. C. ST. JOHN, Esq., of the Harbour Grace *Herald*, who has supplied him with the astronomical calculations; and he has further to testify to the kind, courteous, and cordial attention extended to him by all the Heads of Departments when giving him such information as he felt it necessary to require from them.

1
2
3
4
5
6
7
8
9
10
11
12
13
14
15
16
17
18
19
20
21
22
23
24
25
26
27
28
29
30
31
32
33
34
35
36
37
38
39
40
41
42
43
44
45
46
47
48
49
50
51
52
53
54
55
56
57
58
59
60
61
62
63
64
65
66
67
68
69
70
71
72
73
74
75
76
77
78
79
80
81
82
83
84
85
86
87
88
89
90
91
92
93
94
95
96
97
98
99
100
101
102
103
104
105
106
107
108
109
110
111
112
113
114
115
116
117
118
119
120
121
122
123
124
125
126
127
128
129
130
131
132
133
134
135
136
137
138
139
140
141
142
143
144
145
146
147
148
149
150
151
152
153
154
155
156
157
158
159
160
161
162
163
164
165
166
167
168
169
170
171
172
173
174
175
176
177
178
179
180
181
182
183
184
185
186
187
188
189
190
191
192
193
194
195
196
197
198
199
200
201
202
203
204
205
206
207
208
209
210
211
212
213
214
215
216
217
218
219
220
221
222
223
224
225
226
227
228
229
230
231
232
233
234
235
236
237
238
239
240
241
242
243
244
245
246
247
248
249
250
251
252
253
254
255
256
257
258
259
260
261
262
263
264
265
266
267
268
269
270
271
272
273
274
275
276
277
278
279
280
281
282
283
284
285
286
287
288
289
290
291
292
293
294
295
296
297
298
299
300
301
302
303
304
305
306
307
308
309
310
311
312
313
314
315
316
317
318
319
320
321
322
323
324
325
326
327
328
329
330
331
332
333
334
335
336
337
338
339
340
341
342
343
344
345
346
347
348
349
350
351
352
353
354
355
356
357
358
359
360
361
362
363
364
365
366
367
368
369
370
371
372
373
374
375
376
377
378
379
380
381
382
383
384
385
386
387
388
389
390
391
392
393
394
395
396
397
398
399
400
401
402
403
404
405
406
407
408
409
410
411
412
413
414
415
416
417
418
419
420
421
422
423
424
425
426
427
428
429
430
431
432
433
434
435
436
437
438
439
440
441
442
443
444
445
446
447
448
449
450
451
452
453
454
455
456
457
458
459
460
461
462
463
464
465
466
467
468
469
470
471
472
473
474
475
476
477
478
479
480
481
482
483
484
485
486
487
488
489
490
491
492
493
494
495
496
497
498
499
500
501
502
503
504
505
506
507
508
509
510
511
512
513
514
515
516
517
518
519
520
521
522
523
524
525
526
527
528
529
530
531
532
533
534
535
536
537
538
539
540
541
542
543
544
545
546
547
548
549
550
551
552
553
554
555
556
557
558
559
560
561
562
563
564
565
566
567
568
569
570
571
572
573
574
575
576
577
578
579
580
581
582
583
584
585
586
587
588
589
590
591
592
593
594
595
596
597
598
599
600
601
602
603
604
605
606
607
608
609
610
611
612
613
614
615
616
617
618
619
620
621
622
623
624
625
626
627
628
629
630
631
632
633
634
635
636
637
638
639
640
641
642
643
644
645
646
647
648
649
650
651
652
653
654
655
656
657
658
659
660
661
662
663
664
665
666
667
668
669
670
671
672
673
674
675
676
677
678
679
680
681
682
683
684
685
686
687
688
689
690
691
692
693
694
695
696
697
698
699
700
701
702
703
704
705
706
707
708
709
710
711
712
713
714
715
716
717
718
719
720
721
722
723
724
725
726
727
728
729
730
731
732
733
734
735
736
737
738
739
740
741
742
743
744
745
746
747
748
749
750
751
752
753
754
755
756
757
758
759
760
761
762
763
764
765
766
767
768
769
770
771
772
773
774
775
776
777
778
779
780
781
782
783
784
785
786
787
788
789
790
791
792
793
794
795
796
797
798
799
800
801
802
803
804
805
806
807
808
809
810
811
812
813
814
815
816
817
818
819
820
821
822
823
824
825
826
827
828
829
830
831
832
833
834
835
836
837
838
839
840
841
842
843
844
845
846
847
848
849
850
851
852
853
854
855
856
857
858
859
860
861
862
863
864
865
866
867
868
869
870
871
872
873
874
875
876
877
878
879
880
881
882
883
884
885
886
887
888
889
890
891
892
893
894
895
896
897
898
899
900
901
902
903
904
905
906
907
908
909
910
911
912
913
914
915
916
917
918
919
920
921
922
923
924
925
926
927
928
929
930
931
932
933
934
935
936
937
938
939
940
941
942
943
944
945
946
947
948
949
950
951
952
953
954
955
956
957
958
959
960
961
962
963
964
965
966
967
968
969
970
971
972
973
974
975
976
977
978
979
980
981
982
983
984
985
986
987
988
989
990
991
992
993
994
995
996
997
998
999
1000

ECLIPSES.

In the year 1852 there will be 6 Eclipses:—3 of the Sun, and 3 of the Moon, viz:—I. A Total Eclipse of the Moon, January 7th; II. A partial Eclipse of the Sun, January 21st; III. A partial Eclipse of the Sun, June 17th; IV. A total Eclipse of the Moon, July 1st; V. A total Eclipse of the Sun, December 10th; VI. A partial Eclipse of the Moon, December 26.

Of these, the *first* only, will be visible in this Island, namely:—the Eclipse of the Moon on the 7th January, which will take place as follows:—

First contact with the Shadow, at	11 min. before	1, A.M.	} Mean	
Disappearance.	49 min. past	1, "		Solar
Middle of Eclipse,	39 min. past	2, "		Time
Reappearance,	28 min. past	3, "		St.
Last contact with shadow,	28 min. past	4, "		John's.

Magnitude of Eclipse (Moon's Diameter=1) 1.667 on N. limb.
 The first contact with the Shadow occurs at 86° from the Northernmost point of the Moon's limb towards the East.
 The last contact at 83° toward the West.

Principal Articles of the Calendar.

Golden Number.....10	} Dominical Letter.....D C	
Epact..... 9		Roman Indiction..... 10
Solar Cycle13		Julian Period.....6563

The Year 5613 of the Jewish Era commences Sept. 14, 1852.
 The Year 1269 of the Mohammedan Era commences Oct. 15, 1852.

St. John's.

Latitude.....	47° 33' 22	North
Longitude (Meridian of Halifax).....	10 52 31	East
Ditto (Meridian of Greenwich).....	52 45 29	West
Magnetic Variation (1838).....	28 44 0	Westerly

FULL M
 LAST Q
 EW M
 FIRST C
 1 Th
 2 Fr
 3 Sa
 4 Su
 5 M
 6 Tu
 7 W
 8 Th
 9 Fr
 10 Sa
 11 Su
 12 M
 13 Tu
 14 W
 15 Th
 16 Fr
 17 Sa
 18 Su
 19 M
 20 Tu
 21 W
 22 Th
 23 Fr
 24 Sa
 25 Su
 26 M
 27 Tu
 28 W
 29 Th
 30 Fr
 31 Sa
 Equat

of the Sun, and on, January 7th ; III. A partial Eclispe of the Moon, on the 10th ; VI. A

land, namely :— which will take place

L. A.M. Mean Solar Time St. John's

on N. limb. from the North-East.

ter..... D C on..... 106565

t. 14, 1852. on Oct. 15, 1852.

22 North 31 East 29 West 0 Westerly



JANUARY, 31 DAYS.

MOON'S PHASES.

FULL MOON..... 7th day, 2h. 38m., Morning. EAST QUARTER..... 13th day, 9h. 47m., Evening. NEW MOON..... 21st day, 3h. 55m., Morning. FIRST QUARTER..... 29th day, 7h. 3m., Morning.

Table with 4 columns: Day/Event, Day/Event, s23, 4'. Includes entries like 'R Academy op, 1769', '2nd Sun after Christmas', 'Ephiphany, Twelfth-day', 'Nelson's Funeral, 1806', '1st Sun after Epiphany', 'Brit Museum op. 1759', 'Sir J Moore killed, 1809', '2nd Sun after Epiphany', 'Agnes. Am In ac, 1783', 'W Pitt died, 1806', '3d Sun after Epiphany', 'George III died, 1820'.

1st—First Local Legislature met, 1833. 2d—Supreme Court opened by Charter, 1826. 4th—High Sheriff appointed, 1826. 9th—Roman Catholic Cathedral cons., 1850. 14th—Close of Amalgamated Assembly, 1847. 17th—Amalgamated Assembly opened by Sir John Harvey, 1843. 28th—Colonial Building opened, 1850. 4th—E of Time... 5' 21 10th—E of Time... 7' 55 17th—E of Time... 10' 28 23d—E of Time... 12' 13 29th—E of Time... 13' 29

VOLCANOES.—There are now about 303 burning volcanoes in the world, of which 194 are on islands, and 109 on continents. Somebody says that politeness is like an air-cushion: there may be nothing in it, but it eases our jolts wonderfully.

Equation of time to be added to apparent time during this month.



FEBRUARY, 29 DAYS.

MOON'S PHASES.

FULL MOON.....5th day, 3h. 21m., Evening.
 LAST QUARTER12th day, 6h. 31m., Morning.
 NEW MOON19th day, 9h. 23m., Evening.
 FIRST QUARTER26th day, 2h. 0m., Morning.

1	Su	4th Sun after Epiphany	17	15'	7th—Harbour Grace Wesleyan Chapel destroyed by fire, 1850.
2	M		16	58	
3	Tu		16	41	
4	W	Rich I released, 1194	16	23	9th—Dedication of New Wesleyan Chapel at Harbour Grace, 1851.
5	Th	Agatha. R Peel b, 1788	16	5	
6	Fr	Charles II died, 1685	15	47	
7	Sa		15	29	17th—Benev Irish Society founded, 1806.
8	Su	Septuagesima Sunday	15	10	
9	M		14	51	21st—Torbay Church consecrated, 1841.
10	Tu	Q Victoria married, 1840	14	32	
11	W		14	12	24th—Governor Pickmore died, 1818.
12	Th	Lady J Grey bhd, 1554	13	52	
13	Fr	Revolution, 1688	13	32	
14	Sa	St Valentine	13	12	3d—E of Time...14' 9
15	Su	Sexagesima Sunday	12	52	9th—E of Time...14' 31
16	M		12	31	16th—E of Time...14' 21
17	Tu	M Angelo died, 1564	12	10	23d—E of Time...13' 36
18	W	Martin Luther d, 1546	11	49	27th—E of Time...12' 57
19	Th	Copernicus born, 1473	11	28	
20	Fr	Voltaire born, 1694	11	7	
21	Sa	Trinidad taken, 1794	10	45	LIGHTHOUSES—In July, 1850, the light-house establishment of the United States numbered 315 lights in lighthouses, and 40 floating-lights, exhibiting over 3000 lamps, and supported at an annual expense of \$141,153.
22	Su	Quinquagesima Sunday	10	24	
23	M		10	2	
24	Tu	Shrove Tuesday	9	40	
25	W	Ash Wednesday	9	18	
26	Th	Royal Ex opened, 1699	8	55	
27	Fr		8	33	
28	Sa	Corn Laws ended, 1849	8	10	
29	Su	1st Sun in Lent	7	48	

Equation of time to be added to apparent time during this month.



MARCH, 31 DAYS.

MOON'S PHASES.

MOON.....	6th day, 1h. 58m., Morning.
QUARTER.....	12th day, 4h. 58m., Evening.
MOON.....	20th day, 3h. 11m., Evening.
QUARTER.....	28th day, 5h. 18m., Evening.

21m., Evening.
 31m., Morning.
 23m., Evening.
 0m., Morning.

hour Grace Wes-
 Chapel destroyed
 1850.
 igation of New
 yan Chapel at
 r Graco, 1851.
 nev Irish Socie-
 ded, 1806.
 bay Church con-
 l, 1841.
 vernor Pickmore
 18.

Time....14' 9
 Time...14' 31
 f Time...14' 21
 Time...13' 36
 f Time...12' 57

uses —In July,
 light-house es-
 t of the United
 bered 315 lights
 uses, and 40
 uts, exhibiting
 umps, and sup-
 an annual ex-
 41,153.

g this month.

M	St David's Day
Tu	
W	Henry IV died, 1461
Th	
Fr	
Sa	Michael Angelo b, 1474
Su	2nd Sunday in Lent
M	Wm III died, 1702
Tu	
W	Raphael born, 1483
Th	
Fr	St Gregory
Sa	Bonaparto outlaw, 1815
Su	3d Sunday in Lent
M	
Tu	
W	St Patrick
Th	St Edward
Fr	
Sa	St Bartholomew
Su	4th Sun in Lent
M	Riots at Toronto, 1849
Tu	
W	
Th	Annuncia. Lady Day
Fr	
Sa	Peace of Amiens, 1802
Su	5th Sun in Lent
M	
Tu	
W	

s7	25'
7	2
6	39
6	16
5	53
5	30
5	6
4	43
4	19
3	56
3	32
3	9
2	45
2	21
1	58
1	34
1	10
0	47
NO	23
NO	1
0	24
0	48
1	12
1	35
1	59
2	22
2	46
3	9
3	33
3	56
4	10

23rd—First Act made by
 the Legislature, 1833.

9th—E of Time...10' 43
 16th—E of Time...8' 47
 22d—E of Time...6' 59
 27th—E of Time...5' 27

BRITISH ARMY AND NA-
 VY.—On the 1st January,
 1851, the Army of Great
 Britain consisted of 114,-
 451 men, of whom 52,-
 402 are stationed in Great
 Britain and Ireland, 27,-
 030 in the East Indies,
 and 35,019 in the colonies.
 Her Navy consists of 339
 sailing, and 161 steam ves-
 sels, besides 47 steam-
 packets, which may be
 used for warlike purposes.

UNITED STATES MILITIA,
 ARMY, AND NAVY.—The
 enrolled Militia numbers
 2,006,068 men. The Re-
 gular Army, 12,326, offi-
 cers and privates. The
 Navy consists of 46 sail-
 ing, 14 steam vessels, and
 5 storeships.

uation of time to be added to apparent time during this month.



APRIL, 30 DAYS.

MOON'S PHASES.

FULL MOON 4th day, 10h. 52m., Morning
 LAST QUARTER 11th day, 5h. 28m., Morning
 NEW MOON 19th day, 8h. 14m., Morning
 FIRST QUARTER 27th day, 4h. 31m., Morning

1	Th		N4	42'	16th—Geological Survey
2	Fr	Bat Copenhagen, 1801	5	5	of Newfoundland commenced, 1839
3	Sa		5	28	
4	Su	<i>Palm Sunday</i>	5	51	22d—Sir John Gaspar
5	M		6	14	LeMarchant arvd, 184
6	Tu		6	37	23d—Sworn into Office.
7	W	Don Pedro ab. 1831	6	59	28th—Bishop Feild Co
8	Th	Bat Hilkersburg, 1742	7	22	separated, 1844.
9	Fr	Good Friday	7	44	29th—Gas Company In
10	Sa		8	6	corporated, 1844
11	Su	<i>Easter Sunday</i>	8	28	
12	M	<i>Easter Monday</i>	8	50	4th—E of Time....3'
13	Tu		9	12	12th—E of Time...0'
14	W	Vaccination ins, 1796	9	33	18th—E of Time...0'
15	Th	Mutiny Spithead, 1797	9	55	24th—E of Time...1'
16	Fr	Bat of Culloden, 1745	10	16	
17	Sa	Franklin died, 1790	10	37	EMIGRATION.—Accord
18	Su	<i>Low Sunday</i>	10	58	ing to official statements
19	M		11	19	the emigration to the U
20	Tu		11	40	nited States in 1850, wa
21	W		12	0	315,333, which is an in
22	Th	Flelding died, 1707	12	20	crease of 15,723 over the
23	Fr	St George	12	40	of the preceding year.
24	Sa	Defoe died, 1731	13	0	The total number of
25	Su	<i>2nd Sunday after Easter</i>	13	19	insane persons in Englan
26	M		13	39	and Wales, on the 1st Jan
27	Tu		13	58	1849, was 14,560.
28	W		14	17	Never put off till to
29	Th	Mutiny of Bounty, 1789	14	35	morrow whan can be done
30	Fr	Bat of Fonteney, 1745	14	54	to-day.

Equation of time to be added to apparent time to the 14th, and to be subtracted the remainder of the month.



MAY, 31 DAYS.

MOON'S PHASES.

NEW MOON.....	3rd day, 6h. 51m., Evening.
FIRST QUARTER.....	10th day, 7h. 51m., Evening.
FULL MOON.....	18th day, 11h. 44m., Evening.
THIRD QUARTER.....	26th day, 0h. 7m., Evening.

Sn	St Philip and St James	n15	12	3rd—Foundation Stone of
Su	3d Sunday after Easter	15	30	the New Custom House
M	Inv of the Cross	15	48	laid, 1847
Tu		16	5	4th—Commenced laying
W	Bonnaparte died, 1821	16	22	Water Pipes in the City
Th	St John the Evangelist	16	39	of St. John's, 1847
Fr	Battle of Prague, 1757	16	56	6th—Right Rev Dr Mul-
Sn		17	12	lock, R. C. Condjutor
Su	4th Sunday after Easter	17	28	Bishop, arrived, 1848
M	Battle of Lodi, 1796	17	44	8th—Royal Mail Steamer
Tu		17	59	Falcon lost at the north
W		18	14	side of Ferryland Nar-
Th	Henry IV assas, 1510	18	29	rows, 1851
Fr	Fahrenheit born, 1686	18	44	9th—Mechanics' Institute
Sn		18	58	founded, 1849
Su	Rogation Sunday	19	12	20th—Foundation stone of
M		19	25	Roman Catholic Catho-
Tu		19	38	dr. l laid, 1841
W	St Dunstan	19	51	24th—Foundation stone
Th	1st Railway Act p, 1801	20	4	of new Colonial Build-
Fr	Wharton died, 1790	20	16	ing hid, 1847
Sn	Pope born, 1688	20	28	Foundation stone of Na-
Su	Sunday after Ascension	20	40	tive Hall laid, 1845
M	Q Victoria born, 1819	20	51	28th—Bishop Scallan (R
Tu		21	2	C) died, 1830
W	Dante born, 1265	21	12	
Th	Venerable Bede	21	22	2d—E of Time...3' 10
Fr	Dutch Fleet des, 1672	21	32	8th—E of Time...3' 43
Sn		21	41	15th—E of Time...3' 55
Su	Whit Sunday	21	50	21st—E of Time...3' 42
M	Chalmers died, 1847	21	59	26th—E of Time...3' 17

Equation of time to be subtracted from apparent time this month.

1. 52m., Mornin
 2. 28m., Mornin
 3. 14m., Mornin
 4. 31m., Mornin

Geological Surve
 Newfoundland com
 ed, 1839
 ir John Gaspar
 archant arvd, 184
 worn into Office.
 Bishop Feild Co
 ated, 1844.
 Gas Company In
 orated, 1844

of Time...3'
 E of Time...0'
 E of Time...0'
 E of Time...1' 5

GRATION.—Accord
 official statement
 igration to the U
 ates in 1850, wa
 , which is an in
 of 15,723 over the
 preceding year.
 total number of
 persons in Englan
 les, on the 1st Jan
 as 14,560.
 r put off till to
 whan can be don

to the 14th, and t
 onth.



JULY, 31 DAYS.

MOON'S PHASES.

NEW MOON.....	1st day, 11h. 56m., Morning.
FIRST QUARTER.....	9th day, 4h. 35m., Morning.
FULL MOON.....	17th day, 0h. 44m., Morning.
LAST QUARTER.....	23rd day, 9h. 30m., Evening.
NEW MOON.....	30th day, 10h. 40m., Evening.

4m., Morning.
13m., Morning.
6m., Evening.
15m., Evening.

eration of St
ld Church, 1827
t Pro. Bishop of
ived, 1840
ohn's destroyed
great fire, 1846
chanics' Society
934
oundation stone
sleyan Church,
r Grace, laid,
discovered by
497
Time... 2' 31
Time... 1' 42
Time... 0' 33
Time... 0' 55
Time... 2' 39
Know A Fool:
the Arab pro-
be known by
anger without
without pro-
without motive,
without object,
st in a stranger,
knowing his
n his foes.
me to the 14th
month.

Th	Battle of Boyne, 1690	N23	6	2d—St Paul's Church,
Fr	Sir R Peel died, 1850	23	2	Harbour Grace, conse- crated, 1840
Sa		22	57	
Su	4th Sunday after Trinity	22	52	4th—Right Rev'd Bishop Feild arrived, 1844
M	Sovereigns first iss, 1817	22	46	6th—Market House open- ed, 1850
Tu		22	40	
W	Peace of Tilsit, 1807	22	34	
Th	Duke Cambridge d, 1850	22	27	7th—Sir J G LeMarchant embarked for England on leave of absence, 1851
Fr	Bourbons restor. 1815	22	20	
Sa	Calvin born, 1509	22	13	
Su	5th Sunday after Trinity	22	5	8th—Hon James Crowdy sworn in as Administra- tor of the Government
M	Erasmus died, 1536	21	56	
Tu		21	48	
W	Bastile destroyed, 1789	21	39	14th—Right Reverend Dr Fleming, Roman Catho- lic Bishop, died, 1850
Th	St Swithin	21	29	
Fr	Sir J Reynolds b, 1723	21	20	
Sa	Adam Smith d, 1790	21	9	19th—Great Fire at Saint John's. 1819
Su	6th Sunday after Trinity	20	59	
M		20	48	22nd—Royal Mail Steamer Kestrel lost at St Shott's, 1849
Tu		20	37	
W	Lord Russell bhd, 1683	20	25	
Th	St Mary Magdàlene	20	13	23d—First great public demonstration of the Sons of Temperance of St John's
Fr	Gibraltar taken, 1704	20	1	
Sa	Battle of Harlaw, 1411	19	49	
Su	7th Sunday after Trinity	19	36	
M	St Anne	19	23	
Tu		19	9	2d—E of Time... 3' 38
W	Battle Talavera, 1809	18	55	9th—E of Time... 4' 49
Th	Span Armada did, 1588	18	41	16th—E of Time... 5' 40
Fr	French Revolu. 1830	18	27	21st—E of Time... 6' 3
Sa	Penn died, 1718	18	12	28th—E of Time... 6' 10

Equation of time to be added to apparent time during this month.



AUGUST, 31 DAYS.

MOON'S PHASES.

LAST QUARTER 7th day, 9h. 55m., Evening.
 NEW MOON 15th day, 10h. 26m., Morning.
 FIRST QUARTER 22nd day, 4h. 30m., Morning.
 FULL MOON 29th day, 11h. 35m., Morning.

1 Su	8th Sunday after Trinity	17 57	9th—Arrival of Prince
2 M	Battle Blenheim, 1704	17 41	Henry of the Nether-
3 Tu		17 26	lands. 1845
4 W	E India Docks op, 1806	17 10	13th—Exchange Buildings
5 Th	Bat Dogger Bank, 1781	16 54	St John's, opened 1842
6 Fr	Battle Sedgmoor, 1685	16 37	15th—Foundation stone of
7 Sa	Queen Caroline d, 1821	16 20	the New Congregation-
8 Su	[9th Sun after Trinity	16 3	al Church laid, 1851
9 M	Ca Ecc Titles Bill rec'd	15 46	18th—Fire at Harbour
10 Tu	the Royal assent, 1851]	15 29	Grace, 1832
11 W		15 11	21st—Foundation stone
12 Th	Thames Tun opd, 1841	14 53	of Protestant Cathedral
13 Fr	Revolu in Spain, 1836	14 34	laid, 1843
14 Sa	Battle Drogheda. 1649	14 16	23rd—St Thomas's Church
15 Su	10th Sun after Trinity	13 57	(St John's) consecrated,
16 M	Manchester Mas 1819	13 38	1840.
17 Tu		13 19	24th—Sir John Harvey
18 W	Bontie died, 1803	13 0	embarked for Halifax to
19 Th	Royal George sunk, 1782	12 40	assume the Government
20 Fr	Battle Surragossa, 1810	12 20	of N Scotin, 1846, and
21 Sa	Battle Standard, 1138	12 1	Lieut Colonel Law ap-
22 Su	11th Sun after Trinity	11 40	pointed Administrator of
23 M	Wallace bhd, 1305	11 20	the Government.
24 Tu		10 59	
25 W	Rev at Brussels, 1830	10 39	2nd—E of Time . . . 5' 56
26 Th	Prince Albert b, 1819	10 18	8th—E of Time . . . 5' 21
27 Fr	Algiers bomb, 1816	9 57	18th—E of Time . . . 3' 36
28 Sa	St Augustin	9 36	22d—E of Time . . . 2' 40
29 Su	12th Sun after Trinity	9 14	28th—E of Time . . . 1' 3
30 M	Paley born, 1743	8 53	
31 Tu		8 31	Take things by their

Equation of time to be added to appurent time during this month.

LAST Q
 NEW M
 FIRST Q
 FULL M
 1 W
 2 Th
 3 Fr
 4 Sa
 5 Su
 6 M
 7 Tu
 8 W
 9 Th
 10 Fr
 11 Sa
 12 Su
 13 M
 14 Tu
 15 W
 16 Th
 17 Fr
 18 Sa
 19 Su
 20 M
 21 Tu
 22 W
 23 Th
 24 Fr
 25 Sa
 26 Su
 27 M
 28 Tu
 29 W
 30 Th
 Equatio



SEPTEMBER, 30 DAYS.

MOON'S PHASES.

LAST QUARTER 6th day, 3h. 3m., Evening.
 NEW MOON 13th day, 7h. 7m., Evening.
 FIRST QUARTER 20th day, 9h. 46m., Morning.
 FULL MOON 28th day, 2h. 53m., Morning.

1	W	Louis XIV died, 1715	n8	9	2nd—Gas first introduced at St John's, 1845
2	Th	London burnt, 1666	7	47	
3	Fr	Battle Worcester, 1651	7	25	Mr Gisborne's departure to Survey a Line for the Electric Telegraph to Cape Ray, 1851
4	Sa		7	3	
5	Su	13th Sun after Trinity	6	41	
6	M		6	19	
7	Tu		5	56	3d—Foundation stone of Sons of Temperance Hall of Harbour Grace laid, 1851
8	W	Nativity of Virgin Mary	5	34	
9	Th	Wm Conqueror d, 1087	5	11	
10	Fr	Battle of Pinkey, 1547	4	48	
11	Sa	Thompson, poet, b 1700	4	26	10th—Organization of the Daughters of Temperance, 1851
12	Su	14th Sun after Trinity	4	2	
13	M	General Wolfe k, 1759	3	39	
14	Tu		3	16	16th—Sir John Harvey arrived, 1841
15	W		2	53	
16	Th	James II died, 1701	2	30	19th—Violent Hurricane, 1846
17	Fr	Siege Gibraltar, 1782	2	7	
18	Sa	Dr Johnson b, 1709	1	43	20th—Great Public Meeting to promote Direct Steam Communication with England and the United States, 1851
19	Su	15th Sun after Trinity	1	20	
20	M	Battle Newbury, 1643	0	57	
21	Tu		0	33	
22	W		n0	10	
23	Th	Don Pedro died, 1834	s0	13	21st—Protestant Cathedral consecrated, 1850
24	Fr	Samuel Butler d, 1680	0	37	
25	Sa	Holy Alliance, 1815	1	0	22nd—Charter of New Constitution arv'd, 1842
26	Su	16th Sun after Trinity	1	24	
27	M	James Brindley d, 1772	1	47	3d—E of Time... 0' 47
28	Tu		2	10	10th—E of Time.. 3' 8
29	W	Michaelmas Day	2	34	14th—E of Time... 4' 31
30	Th	St Jerome	2	57	24th—E of Time.. 8' 0

Equation of time to be subtracted from apparent time during this month.

55m., Evening.
 26m., Morning.
 30m., Morning.
 35m., Morning.

val of Prince of the Nether- 1845
 Change Buildings
 's, opened 1842
 andation stone of
 w Congregation-
 ch laid, 1851
 e at Harbour
 1832
 andation stone
 estant Cathedral
 43
 'omas's Church
 n's) consecrated,
 John Harvey
 ed for Halifax to
 the Government
 cotin, 1846, and
 Colonel Law ap-
 Administrator of
 vernment.

f Time... 5' 56
 f Time... 5' 21
 of Time... 3' 36
 f Time... 2' 40
 of Time... 1' 3

things by their
 andle.
 uring this month.



OCTOBER, 31 DAYS.

MOON'S PHASES.

LAST QUARTER..... 6th day, 7h. 5m., Morning.
 NEW MOON..... 13th day, 3h. 43m., Morning.
 FIRST QUARTER..... 19th day, 8h. 24m., Evening.
 FULL MOON 27th day, 8h. 23m., Evening.

1	Fr		s3	21	7th—Governor Sir Thos
2	Sa	Major Andre hgd, 1780	3	44	Cochrane arrived, 1825.
3	Su	17th Sun after Trinity	4	7	14th—Organization of the
4	M	Sir J Rennie d, 1821	4	30	Grand Division of the
5	Tu		4	53	Sons of Temperance in
6	W	Louis Philippe b, 1773	5	17	St John's, 1851
7	Th	Battle of Lepauti, 1471	5	40	28th—Bishop Fleming, (R
8	Fr		6	2	C), consecrated, 1829
9	Sa	St Denys	6	25	Benevolent Irish Society
10	Su	18th Sun after Trinity	6	48	Incorporated, 1839
11	M	Bat Camperdown, 1796	7	11	
12	Tu		7	33	2d—E of Time...10' 39
13	W	Edward the Confessor	7	56	8th—E of Time...12' 25
14	Th	Burgoyne surren, 1777	8	18	13th—E of Time...13' 42
15	Fr	Brighton Pier des, 1833	8	40	20th—E of Time...15' 6
16	Sa	Houses of Par b, 1834	9	3	25th—E of Time...15' 47
17	Su	19th Sun after Trinity	9	25	
18	M	Battle of Leipsic, 1813	9	46	DOMESTIC ECONOMY.—
19	Tu		10	8	“ Men talk in raptures,”
20	W	Battle Navarino, 1827	10	30	says Witherspoon, “ of
21	Th	Battle Trafalgar, 1805	10	51	youth and beauty, wit and
22	Fr	Northcote born, 1746	11	12	sprightliness; but after
23	Sa	Battle Edgehill, 1642	11	34	seven years' union, not
24	Su	20th Sun after Trinity	11	54	one of them is to be com-
25	M	St Crispin	12	15	pared to good family man-
26	Tu		12	36	agement, which is seen at
27	W	Captain Cook b, 1728	12	56	every meal, and felt every
28	Th	St Simon and St Jude	13	16	hour in the husband's
29	Fr	Sir W Raleigh d, 1618	13	36	purse.”
30	Sa	Tower burnt, 1841	13	56	Never spend your mo-
31	Su	21st Sun after Trinity	14	15	ney before you have it.

Equation of time to be subtracted from apparent time this month.

LAST Q
 NEW M
 FIRST
 FULL
 1 M
 2 Tu
 3 W
 4 Th
 5 Fr
 6 Sa
 7 Su
 8 M
 9 Tu
 10 W
 11 Th
 12 Fr
 13 Sa
 14 Su
 15 M
 16 Tu
 17 W
 18 Th
 19 Fr
 20 Sa
 21 Su
 22 M
 23 Tu
 24 W
 25 Th
 26 Fr
 27 Sa
 28 Su
 29 M
 30 Tu
 Equat



NOVEMBER, 30 DAYS.

MOON'S PHASES.

LAST QUARTER 4th day, 9h. 9m., Evening.
 NEW MOON 11th day, 1h. 9m., Evening.
 FIRST QUARTER 18th day, 10h. 56m., Morning.
 FULL MOON 26th day, 3h. 9m., Evening.

5m., Morning.
 3m., Morning.
 4m., Evening.
 3m., Evening.

mor Sir Thos
 arrived, 1825.
 nization of the
 ivision of the
 Temperance in
 , 1851
 op Fleming, (R
 ecrated, 1829
 Irish Society
 ated, 1839

Time 10' 39
 Time 12' 25
 Time 13' 42
 Time 15' 6
 Time 15' 47

ic ECONOMY.—
 k in raptures,"
 erspoon, "of
 beauty, wit and
 es; but after
 ars' union, not
 m is to be com-
 ood family man-
 which is seen at
 l, and felt every
 the husband's

pend your mo-
 you have it.
 me this month.

1 M	All Saint's Day	s14	35	3d—Gov Prescott sworn
2 Tu		14	54	in and Sir T Cochrane
3 W		15	13	embarked for England,
4 Th	Wm III landed, 1688	15	31	1834
5 Fr		15	49	Free St Andrew's Church
6 Sa	St Leonard	16	7	opened, 1850
7 Su	22nd Sun after Trinity	16	25	4th—Chief Justice Nor-
8 M	Warsaw taken, 1794	16	43	ton arrived, 1844
9 Tu		17	0	7th—Fire at St John's
10 W	Battle of Preston, 1715	17	17	1817. Court House
11 Th		17	33	burnt
12 Fr	Ancona surrender'd, 1799	17	50	16th—Gen Election, 1848
13 Sa		18	6	20th—Harbor Grace Light
14 Su	23rd Sun after Trinity	18	21	House opened, 1837
15 M		18	37	21st—Second great Fire
16 Tu		18	52	at St John's, 1817
17 W	Lotteries illegal, 1826	19	6	Chief Jus Boulton sworn
18 Th	Rubens born, 1577	19	21	in, 1833
19 Fr	Poussin died, 1665	19	35	22d—Chief Justice Brady
20 Sa	St Edmund	19	48	arrived, 1847
21 Su	24th Sun after Trinity	20	2	
22 M	St Cecilia	20	15	3d—E of Time 16' 16
23 Tu		20	27	7th—E of Time 16' 8
24 W	Abp Tillotson d, 1694	20	39	14th—E of Time 15' 21
25 Th	St Catharine	20	51	21st—E of Time 13' 52
26 Fr	Cowper born, 1731	21	2	27th—E of Time 12' 6
27 Sa	P-Mary of Cam b, 1841	21	13	The annual product of
28 Su	1st Sun in Advent	21	24	the Coal Mines of the Brit-
29 M	Polish Revolution, 1830	21	34	ish Islands, amounts to
30 Tu		21	44	32,000,000 tons.

Equation of time to be subtracted from apparent time during this month.



DECEMBER, 31 DAYS.

MOON'S PHASES.

LAST QUARTER..... 4th day, 8h. 51m., Morning.
 NEW MOON 10th day, 11h. 49m., Evening.
 FIRST QUARTER 16th day, 5h. 8m., Morning.
 FULL MOON..... 26th day, 9h. 38m., Morning.

1	W	St Paul's finished, 1710	21	53	3d—St Andrew's, Scotch
2	Th	Napoleon crowned, 1804	22	2	Church, opened, 1843
3	Fr	Mauritius surren, 1810	22	11	14th—Gen Election 1842.
4	Sa	Westal died, 1836	22	19	First Session of the Le-
5	Su	2d Sunday in Advent	22	27	gislation opened, after a
6	M	St Nicholas	22	34	return to the old Con-
7	Tu		22	41	stitution, by Sir J G Le-
8	W	Concep of the V Mary	22	47	Marchant, 1848
9	Th	Milton born, 1608	22	53	9th—Organization of the
10	Fr	Fall of Genoa, 1809	22	58	Order of the Sons of
11	Sa	Charles XII killed, 1719	23	3	Temperance, 1850
12	Su	3d Sunday in Advent	23	8	
13	M	St Lucy	23	12	
14	Tu		23	15	3d—E of Time...9' 54
15	W	Washington died, 1799	23	18	8th—E of Time...7' 47
16	Th		23	21	13th—E of Time...5' 29
17	Fr		23	23	20th—E of Time...2' 2
18	Sa	Queen's Col burnt, 1778	23	25	24th—E of Time...0' 2
19	Su	4th Sunday in Advent	23	26	
20	M		23	27	
21	Tu		23	27	
22	W		23	27	
23	Th	Arkwright born, 1732	23	27	
24	Fr	Battle Wakefield, 1460	23	26	
25	Sa	Christmas Day	23	24	
26	Su	Sunday after Christmas	23	22	
27	M	St John the Evangelist	23	19	
28	Tu		23	16	
29	W	Thos A'Becket m, 1170	23	13	
30	Th	Pretender died, 1765	23	9	
31	Fr	Silvester	23	5	

SELF-RELIANCE.—Were we to ask a hundred men, who from small beginnings have attained a condition of respectability and affluence, to what they imputed their success in life, the general answer would be, "It was from being early compelled to think for and depend on ourselves."

Equation of time to be subtracted from apparent time to the 24th, and added to it during the remainder of the month.

MEAN TIME of SUN-RISE and SUN-SET

ST. JOHN'S, NEWFOUNDLAND, ON EVERY THURSDAY IN THE YEAR 1852.

Date.	Sun-rise.	Sun-set.	Date.	Sun-rise.	Sun-set.
January 1—	7h 51m	4h 17m	July 2—	4h 9m	7h 59m
8—	7 49	4 26	9—	4 14	7 56
15—	7 45	4 35	16—	4 21	7 51
22—	7 39	4 45	23—	4 29	7 44
29—	7 31	4 55	30—	4 37	7 35
February 5—	7 23	5 6	August 6—	4 46	7 25
12—	7 12	5 17	13—	4 55	7 14
19—	7 0	5 28	20—	5 4	7 2
26—	6 47	5 39	27—	5 13	6 49
March 5—	6 34	5 49	September 3—	5 23	6 35
12—	6 20	6 0	10—	5 33	6 21
19—	6 6	6 10	17—	5 42	6 7
26—	5 52	6 20	24—	5 51	5 53
April 2—	5 38	6 30	October 1—	6 4	5 39
9—	5 24	6 40	8—	6 11	5 25
16—	5 11	6 49	15—	6 21	5 12
23—	4 58	6 58	22—	6 32	4 58
30—	4 46	7 8	29—	6 42	4 47
May 7—	4 34	7 18	November 5—	6 52	4 36
14—	4 24	7 27	12—	7 3	4 27
21—	4 16	7 36	19—	7 14	4 18
28—	4 10	7 43	26—	7 23	4 12
June 4—	4 6	7 50	December 3—	7 32	4 8
11—	4 4	7 55	10—	7 40	4 6
18—	4 3	7 59	17—	7 45	4 7
25—	4 5	8 0	24—	7 49	4 11
			31—	7 51	4 15

Variation of the Compass.

From the Records of Her Majesty's Magnetic Observatory.

The mean variation at Toronto, for the year 1847, was 1° 36' West (nearly); it increases about 3' every year. The variation undergoes a daily change, being least from 7 to 8, A.M., and greatest from 1 to 2 P.M. The variation is least liable to fluctuations in the afternoon; it is near its mean value at 10 A.M., and 6 to 7 P.M.

The Magnetical and Meteorological Observatory was founded by Her Majesty's Government in 1840, in concert with similar establishments in other Colonies and in India. Similar establishments have been maintained at Washington, Philadelphia, and Boston, in the United States, and in most European countries.

m., Morning.
m., Evening.
m., Morning.
m., Morning.

brew's, Scotch
opened, 1843
Election 1842.
sion of the Le-
opened, after a
the old Con-
by Sir J G Le-
c, 1848
ization of the
the Sons of
nce, 1850

ime...9' 54
Time...7' 47
Time...5' 29
Time...2' 2
Time...0' 2

ANCE.—Were
hundred men,
small beginnings
ed a condition
ility and afflu-
at they impu-
nness in life,
answer would
as from being
elled to think
pend on our-

e to the 24th,
month.

DISCOUNT TABLE				INTEREST TABLE						
Shewing the discount on £100 at 6 per cent per annum for any number of days.				Shewing the interest upon £100 at 5 and 6 per cent. per annum for any number of months.						
Days.	6 per cent.			Month.	5 per cent.		6 per cent.			
1	£0	0	3 1/4	1	£0	8	4	£0	10	0
2	0	0	7 1/2	2	0	16	8	1	0	0
3	0	0	11 3/4	3	1	5	0	1	10	0
4	0	1	3 1/4	4	1	13	4	2	0	0
5	0	1	7 1/2	5	2	1	8	2	10	0
6	0	1	11 3/4	6	2	10	0	3	0	0
7	0	2	3 1/4	7	2	18	4	3	10	0
8	0	2	7 1/2	8	3	6	8	4	0	0
9	0	2	11 3/4	9	2	15	0	4	10	0
10	0	3	3 1/4	10	4	3	4	5	0	0
20	0	6	6 1/2	11	4	11	8	5	10	0
40	0	13	1 1/4	12	5	0	0	6	0	0
80	1	6	8 1/2							
100	1	12	10 1/4							

DOLLARS in STERLING at 4s. 4d.

Dollars.	Sterling.		Dollars.	Sterling.		Dols.	Sterling.				
1	£0	4	4	45	£ 9	15	0	300	£65	0	0
5	1	1	8	50	10	16	8	350	75	16	8
10	2	3	4	60	13	0	0	400	86	13	4
15	3	5	0	70	15	3	4	450	97	10	0
20	4	6	8	80	17	6	8	500	108	6	8
25	5	8	4	90	19	10	0	600	130	0	0
30	6	10	0	100	21	13	4	700	151	13	4
35	7	11	8	150	32	10	0	800	173	6	8
40	8	13	4	200	43	6	8	900	195	0	0
				250	54	3	4	1000	216	13	4

COMPARATIVE DEMOCRACY OF ENGLAND, FRANCE, AND THE U. STATES

Country.	Population.	No. Votes.	Votes to Popula'n.
Great Britain and Ireland	28,650,000	839,371	1 in 42
France	34,000,000	250,000	1 in 137
United States	20,000,000	2,750,000	1 in 7

Sterling.

£ s d

1
2
3
4
5
6
7
8
9
10
11
12
13
14
15
16
17
18
19
20

FACTO
there we
contain
moving
The tot
factories
total nu
and that
18, was
ployed
Cost
S. Treas
direct,

STERLING in CURRENCY.

Sterling.		Currency.		Sterling.		Currency.	
£	s	£	s	£2	0 0	£2	6 1 11
1	0	1	2	3	0 0	3	9 2 10
2	0	2	4	4	0 0	4	12 3 9
3	0	3	6	5	0 0	5	15 4 8
4	0	4	8	6	0 0	6	18 5 7
5	0	5	10	7	0 0	8	1 6 6
6	0	6	12	8	0 0	9	4 7 5
7	0	7	1	9	0 0	10	7 8 4
8	0	8	1	10	0 0	11	10 9 3
9	0	9	3	15	0 0	17	6 1 11
10	0	10	5	20	0 0	23	1 6 6
11	0	11	7	25	0 0	28	16 11 1
12	0	12	9	30	0 0	34	12 3 9
13	0	13	11	35	0 0	40	7 8 4
14	0	14	1	40	0 0	46	3 0 12
15	0	15	3	45	0 0	51	18 5 7
16	0	16	5	50	0 0	57	13 10 2
17	0	17	7	60	0 0	69	4 7 5
18	0	18	9	70	0 0	80	15 4 8
19	0	19	11	80	0 0	92	6 1 11
20	0	20	1	90	0 0	103	16 11 1
1	1	21	3	100	0 0	115	7 8 4
2	1	22	5	200	0 0	230	15 4 8
3	1	23	7	300	0 0	346	3 0 12
4	1	24	9	400	0 0	461	10 9 3
5	1	25	11	500	0 0	576	18 5 7
6	1	26	1	600	0 0	692	6 1 11
7	1	27	3	700	0 0	807	13 10 2
8	1	28	5	800	0 0	923	1 6 6
9	1	29	7	900	0 0	1038	9 2 10
10	1	30	9	1000	0 0	1153	16 11 1

FACTORIES IN GREAT BRITAIN.—According to official returns there were in Great Britain in 1850, of all kinds of factories, 4,330, containing 26,638,716 spindles, and 298,916 power-looms. The moving power employed was 107,113 in steam, and 26,104 in water. The total number of children under 13 years of age employed in factories, who attend school, was 19,400 boys, and 15,722 girls. The total number of males employed, between 13 and 18, was 67,894; and that of females above 13, was 329,577; and that of males above 18, was 157,866. The total number of persons of both sexes employed in factories, was 596,082.

COST OF THE MEXICAN WAR.—Mr. Corwin, Secretary of the U. S. Treasury, estimates the cost of the Mexican war, direct and indirect, at the enormous sum of nearly \$300,000,000.

LE £100 at 5 sum for any

per cent.
 10 0 0
 1 0 0
 1 10 0
 2 0 0
 2 10 0
 3 0 0
 3 10 0
 4 0 0
 4 10 0
 5 0 0
 5 10 0
 6 0 0

Sterling.
 65 0 0
 75 16 8
 86 13 4
 97 10 0
 108 6 8
 130 0 0
 151 13 4
 173 6 8
 195 0 0
 216 13 4

U. STATES
 Votes to
 Popula'n.
 -1 in 42
 -1 in 137
 -1 in 7

CURRENCY in STERLING.

Currency.			Sterling.			Currency.			Sterling.		
£	s	d	£	s	d	£	s	d	£	s	d
..	..	2	1 11	£2	0	0	£1	14	8
..	..	3	2 9	3	0	0	2	12	0
..	..	4	3 1	4	0	0	3	9	4
..	..	5	4 5	5	0	0	4	6	8
..	..	6	5 3	6	0	0	5	4	0
..	..	7	6 1	7	0	0	6	1	4
..	..	8	6 14	8	0	0	6	18	8
..	..	9	7 12	9	0	0	7	16	0
..	..	10	8 10	10	0	0	8	13	4
..	..	11	9 8	15	0	0	13	0	0
..	1	0	10 6	20	0	0	17	6	8
..	2	0	10 6	25	0	0	21	13	4
..	3	0	..	1	8 12	30	0	0	26	0	0
..	4	0	..	2	7 3	35	0	0	30	6	8
..	5	0	..	3	5 9	40	0	0	34	0	4
..	6	0	..	4	4 0	45	0	0	39	13	0
..	7	0	..	5	2 6	50	0	0	43	6	8
..	8	0	..	6	0 12	60	0	0	52	13	0
..	9	0	..	6	11 3	70	0	0	60	0	4
..	10	0	..	7	9 9	80	0	0	69	6	8
..	11	0	..	8	8 0	90	0	0	78	0	0
..	12	0	..	9	6 6	100	0	0	86	13	4
..	13	0	..	10	4 12	200	0	0	173	6	8
..	14	0	..	11	3 3	300	0	0	260	0	0
..	15	0	..	12	1 9	400	0	0	346	13	4
..	16	0	..	13	0 0	500	0	0	433	6	8
..	17	0	..	13	10 6	600	0	0	520	0	0
..	18	0	..	14	8 12	700	0	0	606	13	4
..	19	0	..	15	7 3	800	0	0	692	6	8
..	1	0	..	16	5 9	900	0	0	780	0	0
..	1	0	..	17	4 0	1000	0	0	866	13	4

PROGRESS OF MANUFACTURES—The increase of Manufacturing industry in Great Britain in sixty years, is shown by the following table of the raw materials used in that kingdom :

	In 1790.	In 1849
Wool	3,245,352 lbs.	76,756,183 lbs.
Silk	1,253,445 "	6,881,861 "
Hemp	592,306 "	1,061,273 "
Flax	257,222 "	1,806,786 "
Cotton	30,574,374 "	758,841,650 "

RAILROADS.—According to a careful estimate, it is supposed that there will be in the United States, on the 1st January, 1852, about 10,618 miles of railroads in actual operation.

OFF

Governor,
GASPARD L.
Orders of Se

Private S
Colonial S
able James

Colonial
seph W Cro
John How

Colonial
F. Hayward

Surveyor

Her Maj
the Comm
General—E
James Cro
Row, Q.C.
Charles F.

Members
Robert Joh
L. Prender
Rankin.
ter, R.N.
Winsor.
Shea. Bu
Hoyles.

Officers
Master-in-
Rod—Fre
lentine B

Officers
sistant Cl
Sergeant-
and Phill

Supre
sistant Ju
Simms.
Solicitor
able Wil

OFFICERS OF THE CIVIL GOVERNMENT.

Governor, Vice-Admiral, and Commander-in-Chief—Sir JOHN GASPARD LE MARCHANT, Knight and Knight Commander of the Orders of St. Ferdinand, and of Charles the Third of Spain.

Private Secretary—Edward E Rushworth.

Colonial Secretary and Clerk of the Executive Council—Honourable James Crowdy.

Colonial Secretary's Office—Clerks—Christopher Ayre, and Joseph W Crowdy. Office Keeper—Valentine Born. Messenger—John Howson.

Colonial Treasurer—Robert Carter, M.H.A. Clerk—George F. Hayward.

Surveyor General—Honourable Joseph Noad.

Her Majesty's Executive and Legislative Councils.—The Hon. the Commandant—Lieut.-Col. Law, K.H.; the Hon. the Attorney General—Edward M. Archibald; the Hon. the Colonial Secretary—James Crowdy; Hon. William Thomas; Hon. William Bickford Row, Q.C.; Hon. Joseph Noad; Hon. Laurence O'Brien; Hon. Charles F. Bennett.

Members of the House of Assembly.—St. John's—J. Kont, (Speaker), Robert John Parsons, and Phillip F. Little. Conception Bay—James L. Prendergast, Edmund Hanrahan, Nicholas Molloy, and Richard Rankin. Trinity Bay—Thomas B. Job. Bonavista—Robert Carter, R.N. Fogo—George Henry Emerson. Ferryland—Peter Winsor. Placentia and St. Mury's—John Delaney and Ambrose Shea. Burin—Joshua George Falle. Fortune Bay—Hugh W. Hoyles.

Officers of the Legislative Council.—Clerk—Christopher Ayre. Master-in-Chancery—Bryan Robinson, Q.C. Usher of the Black Rod—Frederick R. Rennie. Door-keepers and Messengers—Valentine Born, David Rogers.

Officers of the House of Assembly.—Clerk—John Stuart. Assistant Clerk—Richard Holden. Solicitor—Frederick B. T. Carter. Sergeant-at-Arms—Elias Rendell. Door-keepers—William Dalton and Phillip Brown. Messenger—Michael Power.

LAW DEPARTMENT.

Supreme Court.—Chief Justice—Honourable Francis Brady. Assistant Judges—Honourables Augustus W. DesBarrés, and James Simms. Attorney General—Honourable Edward M. Archibald. Solicitor General—Hugh A. Emerson. Queen's Counsel—Honourable William B. Row, and Bryan Robinson. Chief Clerk and Regis-

Sterling.

£1	14	8
2	12	0
3	9	4
4	6	8
5	4	0
6	1	4
6	18	8
7	16	0
8	13	4
13	0	0
17	6	8
21	13	4
26	0	0
30	6	8
34	0	4
39	13	0
43	6	8
52	13	0
60	0	4
69	6	8
78	0	0
86	13	4
173	6	8
260	0	0
346	13	4
433	6	8
520	0	0
606	13	4
693	6	8
780	0	0
866	13	4

manufacturing the following

1849
756,183 lbs.
881,861 "
961,273 "
1,006,786 "
1,041,650 "
It is supposed that in 1852, about

triar of Supreme and Central Circuit Courts—Charles Simms. Chief Clerk and Registrar Northern Circuit Court—John Stark. Chief Clerk and Registrar Southern Circuit Court—George Simms. Crier of Supreme Court and Tipstaff—John Hayse.

Barristers of the Supreme Court, St. John's.—Hon. Attorney General, Solicitor General, Hon. William B. Row, Q.C., Charles Simms, Bryan Robinson, Q.C., George Henry Emerson. Hugh William Hoyles, Frederick B. T. Carter, John S. Stevens, James Simms, Junr., Robert R. W. Lilly, Philip F. Little, Harcourt Mooney, Allan Fraser, John Little, George Hogsett, Thomas J. Kough, Alexander Fraser, Matthew W. Wallbank.

Attornies-at-Law, St. John's.—Robert R. Holden, William V. Whiteway, Stanislaus James Bayly.

Barristers and Members of the Law Society, according to their Standing and Seniority.—Hon. Attorney General, Solicitor General, Hon. William B. Row, Q.C., Charles Simms, Bryan Robinson, Q.C., George H. Emerson, Hugh W. Hoyles, Frederick B. T. Carter, John Hayward, John S. Stevens, James Simms, Jr., Robert R. W. Lilly, Philip F. Little, Harcourt Mooney, Allan Fraser, John Little, George J. Hogsett, Thomas J. Kough, Alexander Fraser, Matthew W. Wallbank. *Attornies*—William V. Whiteway, Stanislaus James Bayly. *Students*—William B. Kieley, Henry A. Clift, William G. Flood, John J. Purcell, Stuart W. Templeman, Robert John Pinsent.

Barristers, Harbour Grace—Richard Anderson, J. Hayward, Henry C. Watts.

Sheriffs—Central District—Benjamin G. Garrett. Northern District—Garland C. Gaden. Southern District—John Stephenson.

Masters-in-Chancery—Bryan Robinson, Q.C., George H. Emerson, Charles Simms, and Hugh A. Emerson (Solicitor-General.)

Vice-Admiralty Court—Judge—The Chief Justice for the time being. Registrar—Peter W. Cartor. Marshal—Christopher Ayre.

Notaries Public, St. John's—Charles Simms, M.C., Hon. William B. Row, Q.C., Bryan Robinson, Q.C., George H. Emerson, Hugh W. Hoyles, Robert Prowse, George F. Bown, Henry Devereux, Frederick B. T. Carter, Peter Rogerson, William J. Ward, James Simms, Junr., Robert R. W. Lilly, Edward Morris, George J. Hogsett, William H. Mare, John Little, Samuel G. Archibald, Matthew W. Wallbank, Thomas J. Kough, Alexander Fraser, William V. Whiteway, Stanislaus J. Bayly, John B. Cormack.

Outports—Harbour Grace—A. Drysdale, John Hayward. Carboneur—Henry C. Watts. Ferryland—Robert Carter. Twillingate—John Peyton. Burin—William Hooper. Placentia—William G. Bradshaw. Fortune Bay—P. Tocque. Southern District and Labrador—William Henry Ellis.

St. John's
Hayward
Clerk and S
Harbour
Edward
N.B.—T
perform th

OFF

St. John
John Ca
cond Land
house Kee
dergast.

Outport

James M
Sub-Colle

Trinity—

Sub-Colle

Collector.

L. McKie

Collector.

rin—Tho

Preventiv

Officer. F

James W

Sub-Colle

—Thoma

Author

Comm
R.N.C. M

missary

ry Gener

man, A. J.

Royal

nants—A

Royal

land).

Whitmo

Messen

Royal

lonel Ro

West (

Bold, M

S B Ke

CUSTOMS DEPARTMENT.

St. John's—Comptroller of Customs and Navigation Laws—George Hayward. First Clerk and Seacher—James Bayly. Second Clerk and Seacher—Joseph R. Mullings.

Harbour Grace.—Comptroller of Customs and Navigation Laws—Edward Earl Brown.

N.B.—The several officers of Colonial Revenue at the Outports, perform the duties of Comptroller of Customs and Navigation Laws.

OFFICERS OF THE COLONIAL REVENUE.

St. John's.—Collector—John Kent. Landing and Tide Surveyor—John Canning. First Landing Waiter—George Bennett. Second Landing Waiter—Edward L. Moore. First Clerk and Warehouse Keeper—James S. Hayward. Second Clerk—James Pendergast. Lockers—Richard Furneaux, Peter McKie.

Outports.—Twillingate—Samuel Prowse, Sub-Collector. Fogo—James M. Winter. Sub-Collector. Greenspond—Lorenzo Moore, Sub-Collector. Bonavista—William Sweetland, Preventive Officer. Trinity—Robert Bayly, Sub-Collector. Carbonear—Donald Bethune, Sub-Collector. Harbor Grace—Edward E. Brown, Acting Sub-Collector. Brigus—Joshua Green, Sub-Collector. Bay Bulls—John L. McKie, Preventive Officer. Ferryland—Robert Carter, Sub-Collector. Placentia—William G. Bradshaw, Sub-Collector. Burin—Thomas Birkett, Sub-Collector. St. Mary's—Hannibal Murch, Preventive Officer. Grand Bank—Josiah Blackburn, Preventive Officer. Fortune—Thomas Rogers, Preventive Officer. Lamaline—James Winter, Sub-Collector. Harbor Briton—Thomas E. Gaden, Sub-Collector. Gaultois—Thomas Winter, Sub-Collector. La Poile—Thomas Read, Sub-Collector.

Authorised Broker, St. John's—Daniel P. Marrett.

MILITARY ESTABLISHMENT.

Commandant—**P. W.** Lieutenant Colonel ROBERT LAW, K.H., R.N.C. Fort Major—Lieutenant J Gillespie, R.N.C. Assistant Commissary General—Oliver Goldsmith. Deputy Assistant Commissary General—William Hewetson. Garrison Chaplain—Rev C Blackman, A.M.

Royal Artillery—Captain Percy Benn, commanding. Lieutenants—A J McDougall, and William French.

Royal Engineers—Captain—G St V Whitmore, (on leave to England). Lieutenants—J G Jervois, (temporary command), M S Whitmore. Clerk of the Works—J Baker. Clerk—Wm Cummins. Messenger—B Hyland.

Royal Newfoundland Companies—**P. W.** Lieutenant-Colonel Robert Law, K.H., commanding. Captains—R Saunders, O West (on leave), W Jenkins. Lieutenants—J Gillespie, W S Bold, M Petrie (on leave), C F Tyler, W J Coen, H McMahon Engar, S B Kekewich. Ensigns—R A Law, G Priestly, E H King (not

joined). Acting Pay Master—Lieutenant W S Bold. Adjutant—Ensign R A Law (Acting Quarter Master). Surgeon—S McVitie Lloyd, M.D. Assistant Surgeon—W Spence, M.D. Lieutenant Eagar Commanding Harbour Grace Detachment.

Ordnance Department—Deputy Ordnance Storekeeper and Barrack Master—J Tunbridge. Established Clerk—Noel Hammer. Messenger—W Jordan.

Respective Officers of Ordnance—Commanding Officer of Royal Artillery, Commanding Royal Engineer, and Deputy Ordnance Storekeeper.

Commissariat Department—Assistant Storekeeper—J W Thompson. Messenger—P Liddy.

NOTE—**P.** denotes Peninsula. **W.** Waterloo.

Commander-in-Chief of Her Majesty's Fleet on the West India and North American Station.—Vice Admiral Sir George Francis Seymour, Knight, K.C.B. and G.C.H.

POST OFFICE DEPARTMENT.

Post Master General—William Lemon Solomon.

First Clerk—E Solomon. **Second Clerk**—Robert L Hayward.

Deputy Post Masters—William T Stentford, Brigus; Andrew Drysdale, Harbor Grace; Edward Hanrahan, Carbonear; John Lawrence, Bonavista; James Fitzgerald, Fogo; Joseph J Pearce, Twillingate; Martin Williams, Bay Bulls; John Morry, Ferryland; John Devereux, Trepansey; Hannibal Murch, St Mary's; Thomas Birkett, Burin; Thomas E Gaden, Harbor Breton.

Post Office Agents—Anne Buchanan, Trinity; Mary Morris, Placentia.

RATES OF POSTAGE FROM NEWFOUNDLAND TO FOREIGN COUNTRIES.

Places.	ozs.	stg.	Places.	ozs.	stg.		
Austria	under	$\frac{1}{2}$	2 5	Lubeck	under	$\frac{1}{2}$	2 2
Australia	"	$\frac{1}{2}$	2 0	*Maderia	"	$\frac{1}{2}$	1 0
*Bahia	"	$\frac{1}{2}$	1 0	*Montagus	"	$\frac{1}{2}$	1 0
Bahamas	"	$\frac{1}{2}$	2 0	Mecklinburgh	"	$\frac{1}{2}$	1 9
Belgium	"	$\frac{1}{2}$	1 6	New Zealand	"	$\frac{1}{2}$	2 0
*Cape G. Hope	"	$\frac{1}{2}$	2 0	Madras	"	$\frac{1}{2}$	2 0
Copenhagen	"	$\frac{1}{2}$	2 8	Porto Rico	"	$\frac{1}{2}$	1 0
Dominica	"	$\frac{1}{2}$	0 4	*Portugal	"	$\frac{1}{2}$	2 9
East Indies	"	$\frac{1}{2}$	2 0	Prussia	"	$\frac{1}{2}$	2 0
France	"	$\frac{1}{2}$	1 10	Rome	"	$\frac{1}{2}$	2 7
*Fayal	"	$\frac{1}{2}$	1 0	*St. Thomas	"	$\frac{1}{2}$	1 0
Germany	"	$\frac{1}{2}$	2 10	Trinidad (Cuba)	"	$\frac{1}{2}$	1 0
Hong Kong	"	$\frac{1}{2}$	2 0	*Spain, via South-			
Hamburgh	"	$\frac{1}{2}$	1 8	hampton	"	$\frac{1}{2}$	3 2
*Havanna	"	$\frac{1}{2}$	1 0	*United States	"	$\frac{1}{2}$	0 8
Ionian Islands	"	$\frac{1}{2}$	2 0				

Letters marked thus* must be prepaid.

Rates of
for the fol
Indies, th
—Antigu
Carrincou
tia); Jam
St Lucia;
free.

Names
warded. f
dom:—A
Belgrade
cow; Cu
Hamburg
rope; Pr
in Europ

Lord I
D.D, late
foundlan
H Bridg
Dean
Bayly.
tor of St
Curate—
Cove, &
B.A. I

Dean
Carbone
op's an
Lind.

Dean
Greensp
Catalin
—Rev

Dean
ral De
Rev J

Dean
Port-n
—Rev
Rev J
School
Lamal

Rates of Packet Postage on Letters (not exceeding half an ounce.) for the following British Colonies and Foreign places in the West Indies, the Gulf of Mexico, &c., Four Pence, (payment optional).—Antigua; Barbadoes; Belize, (Honduras); Berbice; Bermuda; Carriacou; Demerara; Dominica; Grenada; Halifax, (Nova Scotia); Jamaica; Montserrat; Nassau, (Bahamas); Nevis; St Kitt's; St Lucia; St Vincent; Tobago; Tortola; Trinidad. Newspapers free.

Names of Foreign Countries to which Newspapers may be forwarded, free of Postage, from Newfoundland to the United Kingdom:—Alexandria, via Marseilles; Algeria; Austria; Baden; Belgrade; Belgium; Beyrout; Bremen; Constantinople; Cracow; Cuxhaven; Dardanellas; France; German States; Greece; Hamburg; Holland; Lubeck; Moldavia; Northern States of Europe; Prussia; Scutari in Asia; Smyrna; Switzerland; Turkey in Europe; Wallachia; Wurtemburgh.

CLERGY.

CHURCH OF ENGLAND.

Lord Bishop of Newfoundland—The Right Rev EDWARD FIELD, D.D, late Fellow of Queen's College, Oxford. Archdeacon of Newfoundland and Labrador, and Ecclesiastical Commissary—Ven T F H Bridge. M.A. Registrar of the Diocese—Rev C Blackman, M.A.

Deanery of Avalon.—Petty Harbor and Torbay—Rev E A C Bayly. Incumbent of St Thomas's—Rev C Blackman, M.A. Rector of St John's and Rural Dean—Ven Archdeacon Bridge. MA. Curate—Rev H Tuckwell. Foxtrap, &c—Rev B Fleet. Portugal Cove, &c—Rev W Grey, M.A. Ferryland, &c—Rev H Hamilton, B.A. Pouch Cove—Rev W Shannon.

Deanery of Conception Bay.—Bay Roberts—Rev M Blackmore. Carbonear—Rev J C Harvey. Brigus—Rev W J Hoyles. Bishop's and Island Cove—Rev C Walsh. Heart's Content—Rev H Lind. Bay de Verd—Rev O Rouse. Port de Grave—Rev J Vicars.

Deanery of Trinity Bay.—Bonavista—Rev George M Johnson. Greenspond—Rev Julian Moreton; Rev W Dyer, Schoomaster. Catalina—Rev W Netten. King's Cove—Rev B Smith. Trinity—Rev T M Wood, Rural Dean; Rev J Baggs, Schoolmaster.

Deanery of Notre Dame Bay.—Twillingate—Rev T Boone, Rural Dean. Herring Neck—Rev S Cross. Moreton's Harbour—Rev J Kingwell, Jr. Fogo—Rev E A Sall.

Deanery of Fortune Bay.—La Poile—Rev T Appleby. Channel, Port-aux-Basques—Rev T Boland. Grole—Rev E Colley. Burgeo—Rev J Cunningham. Buriu—Rev J C A Gathercole. Belleoram—Rev J Marshall, Schoolmaster. St George's Bay—Rev W Meek, Schoolmaster. Harbor Briton—Rev J G Mountain, M.A., Rural Dean. Lamaline—Rev W Rozier. Harbor Buffett—Rev W K White.

AC.
Adjutant—
—S McVitt
M.D. Lieuten-
at.
Keeper and Bar-
—Noel Haumer.
Officer of Royal
puty Ordnance
—J W Thomp-
the West India
George Francis

L Hayward.
Brigus; Andrew
Carbonear; John
Joseph J Pearce,
Ferryland;
Mary's; Thomas
Mary Morris,
ON COUNTRIES.

	ozs.	stg.
er	2	2
	1	0
	1	0
	1	9
	2	0
	2	0
	1	0
	2	9
	2	0
	2	7
	1	0
	3	2
	0	8

Deanery of Labrador—St Francis Harbor—Rev H P Disney, M.A. Forteau—Rev A Gifford.

Theological Institution.—Principal—Rev H Tuckwell. Vice-Principal—Rev F G White, M.A. Students—Josiah Darrell, C P K Coomb, G C Murray, W Meek, and Dixon Bertram.

Church Society.—Patron—His Excellency the Governor. President—The Right Rev the Lord Bishop. Vice-Presidents—The Rural Deans. Treasurer—G T Brooking. Secretary—Rev G M Johnson. Committee—B Robinson, T Row, N Mudge, A Hogsett, C D Newman, Hon E M Archibald, T Bennett, W Blackler, Sr., T Ebsary, W P Thomas, J S Clift, J C Withers, H W Hoyles, G H Wilson, W Rendell, Jr., J Tunbridge.

ROMAN CATHOLIC.

Right Rev. JOHN T MULLOCK, O.S.F., Bishop of Newfoundland, St John's—Rev Kyran Walsh, Rev Jeremiah O'Donnell, and Rev J Vereker. Harbor Grace—Very Rev Charles Dalton, and Rev Edmund Condon. Carbonear—Rev John Dalton. Brigus—Very Rev D Mackin. Harbor Main—Rev Edward O'Keefe. Portugal Cove—Rev Thomas O'Connor. Torbay—Rev Edward Troy. Bay Bulls—Rev P Cleary. Fermeuse—Rev James Murphy. Ferryland—Rev John Cummins. St Mary's—Rev John Ryan. Trepassey—Rev William Forristal. Little Placentia—Rev Pelagius Nowlan. Merasheen—Rev James Walsh. Burin—Rev Michael Berney. St Lawrence—Rev J Cullen. St George's Bay and Bay of Islands—Rev A Belanger. Tilton Harbor, Fogo, and Labrador—Rev P. Ward, and Rev R Alyward. King's Cove—Rev Thomas Waldron. Bonavista—Rev M Scanlan. Northern Bay and Bay de Verde—Rev Bernard Duffy.

Two clergymen, sent by the French Government, attend the French fishermen on the French shore every summer.

Convents in St. John's, 2—one of the Presentation Order and one of the Sisters of Mercy.

One Monastery of Brothers of the Third Order of St. Francis.

CONGREGATIONAL CHURCH.

St John's—Rev. GEORGE SCHOFIELD.

WESLEYAN MISSIONARIES—NEWFOUNDLAND DISTRICT.

Rev EDMUND BOTTERELL, Chairman of the District, and General Superintendent. St. John's—Rev Edmund Botterell, Rev John S Addy. Harbour Grace—Rev Samuel W Sprague. Carbonear—Rev Thomas Angwin. Blackhead—Rev James Norris. Perlican—Rev Adam Nightingale. Island Cove—One wanted. Port-de-Grave—Rev Thomas H Smith. Brigus—Rev William E Shenstone. Trinity Bay—One wanted. Bonavista—Rev James England. Green Bay

—Rev John
—Rev Elias
—Hermitage
N.B.—R
District in

St. An

Laymen
Wm. 4, Co
J.P., Bona
Harbor Br
Basque.

Stipend
Doyle, T
Justices
McBride,
Robinson,
George R
Clerk of
Coroners—
Martin V
McGill.

Inspect
liam Shee
tugal Co
Assaye
geon—D
Direct
The Ven
Bennett,
man, B.
Roma
John Ro
ter—Job

* The
Suprem
Central,

—Rev John Brewster. Burin—Rev John S Peach. Grand Bank
 —Rev Elias Brette. Hants Harbour—Rev William P Wells.
 —Hermitage Bay—One wanted.
 N.B.—Rev John Snowball is to proceed to the New Brunswick
 District in the Spring.

CHURCH OF SCOTLAND.

St. Andrew's Church, St. John's—Rev FRANCIS NICHOL.

FREE PRESBYTERIAN CHURCH.

St. John's—Rev ADAM S MUIR.

*Laymen Licensed to Celebrate Marriage, under Colonial Act 3,
 Wm. 4, Cap. 10.*—W G Bradshaw, J.P., Placentia. W Sweetland,
 J.P., Bonavista. J Tilly, J.P., Hants Harbour. T E Gaden, J.P.,
 Harbor Briton. J Peyton, J.P., Twillingate. J Galton, Port-aux-
 Basque.

ELECTORAL DISTRICTS.

DISTRICT OF ST. JOHN'S.

Stipendiary Magistrates—St John's—Peter W Carter, Patrick
 Doyle, Thomas Bennett. Bay Bulls—J L McKie.

*Justices of the Peace**—Nicholas Gill, Robert Carter, R N, Peter
 McBride, Walter Grieve, Thomas B Job. Charles Simms, Bryan
 Robinson, John Dillon, John Kent, James Tobin, Horatio H Forest,
 George Ramsay, Robert J Pinsent.

Clerk of the Peace—Aaron Hogsett, (Robert R W Lilly, acting.)
 Coroners—Aaron Hogsett, and Joseph Shea. M D; Bay Bulls—
 Martin Williams. High Constable—John Toor. Gaoler—William
 McGill. Medical Attendant on Gaol—Edward Kielly.

Inspectors of Pickled Fish—James Pitts, James Murphy, Wil-
 liam Shea, George Daymond, Walter McPherson, J Curtis, Jr [Por-
 tugal Cove].

Assayer of Weights and Measures—James Finlay. District Sur-
 geon—Dr Carson.

Directors of the St. John's Academy—Church of England Board—
 The Ven Archdeacon Bridge, Hon the Attorney General, Thomas
 Bennett, Robert Carter, Hugh W Hoyles. Master—Charles D New-
 man, B.A.

Roman Catholic Board—Right Rev Bishop Mullock, John Kent,
 John Rochfort, M D, Hon Laurence O'Brien, Philip F Little. Mas-
 ter—John V Nugent.

* The Members of Her Majesty's Council, and the Judges of the
 Supreme Court, are all in the Commission of the Peace for the
 Central, Northern, and Southern Districts of the Island.

General Protestant Board—Thomas B Job, Nicholas Stabb, James J Rogerson, Andrew Milroy, Samuel Carson, M.D. Master—Adam Scott.

Central Protestant Board of Education.—Hon William B Row, Robert H Job, Hugh W Hoyles, Henry P Thomas, Nicholas Stabb.

Central Roman Catholic Board of Education.—Right Rev Bishop Mullock, Hon Laurence O'Brien, John Kent, Philip F Little, John Rochford, M.D.

Protestant Board of Education—Ven Archdeacon Bridge, Rev Edmund Botterell, Rev George Schofield. Hon William B Row, Henry P Thomas.

Roman Catholic Board of Education—Right Rev John T Mullock, D D, John Kent, Hon Laurence O'Brien, John Dillon, Patrick Kough, Richard Howley.

Board of Road Commissioners.—James Douglas (Chairman). Hon Charles F Bennett, Hon Laurence O'Brien, Bryan Robinson, and Robert John Parsons. Supervisor—Hon Surveyor General.

Commissioners of Colonial Building—Hon James Crowdy. Hon William Thomas, Hon William B Row, Thomas Bennett, Hon Laurence O'Brien, Peter McBride, Thomas Glen, Thomas B Job, and John Kent. Clerk—Joseph W Crowdy. Architect—James Purcell. Superintendent—Patrick Kough.

Commissioners of Market House and Court House—Honourable James Crowdy, Hon William Thomas, Hon William B Row, Thomas Bennett, Hon Laurence O'Brien, Peter McBride, Thomas Glen, Thomas B Job, and John Kent. Contractors—Parker and Reed. Architect—Patrick Kough. Market House Keeper—John Brine.

For Superintending Repairs of Government House, &c.—Honourables James Crowdy, William Thomas, and Laurence O'Brien; and Robert Carter, R.N.

Directors of the St. John's Hospital.—Chairman—Hon Charles F Bennett. Vice-President—Kenneth McLea. Treasurer—Walter Grieve. John Barron, Nicholas Stabb, William Warren, Junr, Peter McBride, James Douglas, Patrick Tasker, William Walsh, John B Burnes, Terrence Halern, William Cody, Thomas B Job, Hon Laurence O'Brien. Hospital Surgeon—Edward Kielly. Medical Keeper—Frederick Bunting. Secretary—Thomas Glen.

Lunatic Asylum.—Chairman—Peter W Carter. Directors—Two Stipendiary Magistrates, Benjamin G Garrett, Hon Laurence O'Brien, Thomas B Job, Samuel Carson, M.D., Robert Alsop. Secretary—Dr Shea. Physician—Henry H Stabb, M.D. Matron—Mrs Wotton.

Commissioners for the Relief of the Poor.—Honourable Joseph Noad, and the Stipendiary Magistrates of St. John's. Clerk—Joseph Shea, M.D. Dispenser—Timothy Mitchell.

Commissioners for the Appropriation of Duties raised in St. John's.—Hon William B Row, John Kent, and Thomas B Job.

Electric
ral, Hon Jos
oi the Hou

Colonial
J Grieve, P
Shea, M. D

Commiss
Hum Thom

Commiss
William T

Trustees
Stuart.

Commiss
James J G

Tables of

Vesse

Ditto

Ditto

Ditto

Ditto

Unde

4th,

Ship

Newfound
from
day

Govern
number

Speaker

Committ

William

State

A

L

All de
shal, as
a Depos
period w
ed. Th
each ye

Electric Telegraph Commissioners.—The Hon the Attorney General, Hon Joseph Noad, Hon Charles F Bennett, Hon the Speaker of the House of Assembly, Hugh W Hoyles, and Ambrose Shea.

Colonial Penitentiary Commissioners.—Benjamin G Garrett, James J Grieve, Hugh W Hoyles, Hon Laurence O'Brien, and Joseph Shea, M. D.

Commissioners for Issuing Treasury Notes.—Honourables William Thomas, Laurence O'Brien, and Charles F Bennett.

Commissioners to Audit Accounts of Receivers of Duties.—Hon. William Thomas, Edmund Hanrahan, and Richard Rankin.

Trustees of Botanic Gardens.—Hon William Thomas, and John Stuart.

Commissioners of Pilots.—John B Bulley, Hon Laurence O'Brien, James J Grieve, Nicholas Stabb, and Peter McBride.

Tables of Rates of Pilotage in and out of the Port of St. John's.

On Merchant Shipping.

Vessels under 80 tons new to 100 tons old.....	£2	0	0
Ditto from 80 to 130 new, or 100 to 150 old....	2	10	0
Ditto from 130 to 180 new, or 150 to 200 old . .	3	0	0
Ditto from 180 to 230 new, or 200 to 250 old... 3	5	0	
Ditto from 230 to 300 new, or 250 to 300 old... 3	10	0	
Ditto from 300 new, to 500 old, or upwards....	4	0	0

Coasters half the above in proportion to tonnage.

Her Majesty's Ships of War.

Under 6th Rate.....	£2	10	0
4th, 5th, and 6th Rates.....	3	10	0
Ships of the Line, 1st, 2nd, and 3rd Rates.....	5	0	0

Newfoundland Savings Bank, open for Depositors on every Monday from 1 to 3 o'clock, and for Discount Business on every Thursday from 11 to 3 o'clock.

Governors.—The Members of Her Majesty's Council, and an equal number of the Members of the House of Assembly, including the Speaker. *Cashier.*—Robert Carter, R.N. *Clerk.*—Edward Morris. *Committee of Management.*—The Hon the Attorney General, Hon William Thomas, and Ambrose Shea, M.H.A.

Statement of the Assets and Liabilities, 31st December, 1850.

Assets	£62,865	4	5
Liabilities due to Depositors.....	56,119	13	8

Surplus of Assets..... £6,745 10 9

W. B. Row, *Chairman of Audit.*

All deposits of not less than One Shilling made by any person, shall, as soon as they amount to Twenty Shillings, be considered as a Deposit to the amount of the aggregate sum deposited, from the period when the last sum constituting such aggregate was deposited. The interest due on deposits on the first day of January, in each year, to be carried to the credit of the Depositor, and the ba-

as Stabb, James
D. Master—

William B Row,
Nicholas Stabb,
Right Rev Bishop
F Little, John

on Bridge, Rev
William B Row,

ev John T Mul-
Dillon, Patrick

hairman). Hon
Robinson, and
General.

s Crowdy, Hon
nnett, Hon Lau-
mas B Job, and
t—James Pur-

se—Honourable
m B Row, Tho-
Bride, Thomas
rs—Parker and
Keeper—John

ouse, &c.—Ho-
rence O'Brien;

—Hon Charles
reasurer—Wal-
Warren, Junr,
William Walsh,
Thomas B Job,
d Kielly. Me-
mas Glen.

Directors—
Hon Laurence
Robert Alsop.
M. D. Matron

ourable Joseph
Clerk—Joseph

raised in St.
mas B Job.

lance carried to a new account, and to be regarded as a Deposit made on that day. The Bank is at liberty to return or reject the deposits of any person or persons, and to decline receiving any deposit exceeding One Hundred and Fifty Pounds, subject to the payment of Interest thereon, when it shall be deemed expedient so to do. And no sum exceeding One Hundred Pounds shall be received from any depositor but on condition that the same shall not be withdrawn except upon a notice ending at two months from the date thereof, or upon forfeiture of two months' interest thereon, if at the request of such Depositor the Superintending Committee consent to pay the same without requiring such notice.—*Third Rule of Newfoundland Savings Bank.*

Board of Health.—The Stipendiary Magistrates, Hon William Thomas, Hon Laurence O'Brien, Dr Kielly, Dr Richardson, Dr Carsou, Dr Stabb, James Tobin, John Kent, Bryan Robinson, Hugh W Hoyle, Walter Grieve, Kenneth McLean, Peter McBride, John B Barnes, Edward Bowring, George T Brooking, John B Bulley, John Brocklebank, James Cullen, James Douglas, William Freeman, Eugene Harvey, Robert H Job, Charles Loughlan, John O'Mara. Robert Prowse, Thomas Row, Henry C B Thomas, James Tubrid. Health Officer of Quarantine—Samuel Carson, M.D. Superintendent of Quarantine—John Saunders.

Commissioners of Light Houses.—Chairman—Nicholas Stabb, Henry P Thomas, James J Grieve, George T Brooking, and John Munn.

Keepers of Lights.—Cape Bonavista—Jeremiah White. Harbor Grace Island—Edward Oke. Cape Spear—James Cantwell. Fort Amherst—Philip Rouch. Cape Pine—Henry Hearder.

Table of Light Dues.—Six pence per ton on all vessels entering any Port or Harbour of the Colony, except Coasting and Sealing vessels; but not to be levied more than once in any one year.

Coasting and Sealing Vessels.—Of 90 tons and upwards, £1 per annum; of 60 tons and under 90 tons, 15s.; under 60 tons, 10s.

Description of the Lights.—Fort Amherst—This is a Stationary Light, on the southern head of the entrance of St. John's Harbour. . . . Cape Spear—This is a powerful Revolving Light burning at an elevation of 275 feet above the level of the sea, and showing a brilliant flash at intervals of one minute. In clear weather it may be seen from sea, in any direction, at the distance of 30 miles. . . . Harbour Grace—This is a powerful Fixed Light situate on Harbour Grace Island, in Conception Bay, extending Eastwardly or seaward in a direction by Compass from North-east to South-west. . . . Bonavista—This Light revolves every two minutes, showing a red and white flash, alternately; and is elevated 150 feet above the level of the sea. . . . St. Peter's—A Light House has been erected by the French Government on Gallantry Head, near Cape Noir. The Light is a fixed one. It burns at an elevation of about 210 feet above the level of the sea. It may be seen (in passing by the S) from WNW. to NNE., at the distance of 18 or 20 miles in

clear weath
NNE to W
of a Brillia
be apparent
will burn at
will be visi
erection is
and White
tal height o
140 feet hig
of the Bea
is of hexag
each face.
meter is bu
Bail 9 feet
structed of
faces are p
at the top

Bye-Laws

[Made
Governor
cap. 11.]

No. 1—
shall be th
tendance o
Dockage

No. 2—
2s. per da
from 100
6d. per da

Wharf
stone and
staves per
or oil cask
vegetable
half-penn
dies, one
puncher
four pen
if empty
penny; 1
ton, four
and other

No. 3—
same as

as a Deposit
or reject the
giving any de-
fect to the pay-
expedient so to
shall be receiv-
me shall not be
onths from the
interest there-
ding Commit-
notice.—*Third*

Hon William
rd, Dr Carson,
ugh W Hoyles,
John B Barnes,
John Brockle-
eeman, Euge-
n O'Mura, Ro-
James Tubrid.
Superinten-

Nicholas Stabb,
king, and John

White. Harbor
antwell. Fort
ler.

els entering any
d Sealing ves-
year.

wards, £1 per
0 tons, 10s.

s a Stationary

John's Har-

Light burning

and showing a

either it may

30 miles....

tuates on Har-

wardly or sea-

st to South-

minutes, show-

ated 150 feet

ouse has been

nd, near Cape

ation of about

in passing by

r 20 miles in

clear weather. In passing by the N., it is shut in by high land from NNE to WNW... Cape Pine—The character of this Light is that of a Brilliant Revolving Light, of which the greatest intensity will be apparent in every direction seaward *three times in a minute*. It will burn at an elevation of 302 feet above the level of the sea, and will be visible in clear weather at a distance of 30 miles. The erection is a Round Tower 50 feet high, painted with Bands of Red and White (horizontal) alternately... Cape Race Beacon—The total height of this Beacon is 65 feet; it stands on the rising ground 140 feet high, immediately behind Cape Race Rock, so that the top of the Beacon is at an elevation of 205 feet above the sea level. It is of hexagonal shape, 22 feet in diameter at the base, and 11 feet on each face. It tapers upwards to a height of 56 feet, where its diameter is but 2 feet 9 inches, and is then surmounted by a Skeleton Ball 9 feet in diameter—making the total height 65 feet. It is constructed of timber framework with exterior clap-boarding, and its faces are painted alternately White and Red (vertical) and the Ball at the top Red.

(From the Royal Gazette. June 25, 1850.)

BY AUTHORITY.

Bye-Laws for the Preservation and Management of the Public Wharf in Church Hill Public Cove.

[Made and established the 25th day of June, A.D. 1850, by the Governor and Council, in pursuance of the Act 13th Victoria, cap. 11.]

No. 1—The Keeper of the Market House for the time being shall be the Wharfinger, who shall have the charge and superintendence of the said Wharf; and to whom all Rates and Dues of Dockage and Wharfage shall be payable.

No. 2—*Dockage Dues in Currency*—Vessels from 20 to 50 tons, 2s. per day; vessels from 50 to 100 tons, 3s. 6d. per day; vessels from 100 to 150 tons, 5s. per day; vessels exceeding 150 tons 7s. 6d. per day.

Wharfage Dues in Currency.—Coals per hogshead, two pence; stone and ballast per ton, three pence; brick per M., six pence; staves per M., one shilling (two drum staves to reckon as one fish or oil cask stave); firewood, per 100 sticks, three pence; roots and vegetables per barrel, one penny; grain of all kinds per bushel, a half-penny; lumber per M., six pence; barrel hoops per 100 bundles, one shilling; hogshead hoops per 100 bundles, two shillings; puncheon hoops per 100 bundles three shillings; puncheons, each, four pence—if empty, one penny; hogsheds, each, two pence—if empty, one penny; barrels, each, one penny—if empty, a half penny; hay, straw, or fodder, per ton, two shillings; scantling, per ton, four pence; shingles per M., one penny; provisions, bale, dry, and other goods not enumerated, six pence per ton.

No. 3—All merchandize, &c., shipped off the wharf to pay the same as for landing, except such as are taken out of one vessel and

shipped directly on board of another, and ballast carried down the wharf in carts and immediately shipped.

No. 4—Dockage of Vessels to be paid previous to their quitting the wharf; and all Wharfage to be paid or secured by the importers, exporters, agents or consignees, otherwise the articles themselves to be liable.

No. 5—Light Vessels to move for loaded ones—Vessels which shall be obliged to take an outside berth to pay half dockage, except such as shall be receiving goods from on board another vessel—Vessels making fast to the wharf to pay a day's Dockage, excepting it shall be for the purpose of warping from one wharf to another, and not remaining for the term of one hour.

No. 6—Masters of Vessels to be accountable for all damage arising from the want of proper and sufficient fenders, or any other neglect or improper conduct whereby the Wharf may be injured.

No. 7—All articles put upon the wharf to be at the risk of the owner of the same, and if not removed in forty-eight hours, to be subject to the same Wharfage as in the first instance; and so on for every forty-eight hours until removed. JAMES CROWDY.

(From the Royal Gazette, November 18, 1851.)

BY AUTHORITY.

Rules and Regulations Made and Ordained by His Honor the Administrator, and Her Majesty's Council, in conformity with an Act of the General Assembly of Newfoundland, passed in the Fourteenth Year of Her Majesty's Reign, entitled "An Act for the Establishment and Regulation of Inland Posts in this Colony."

1—That the Post Master or Deputy Post Masters appointed or to be appointed under the said Act, shall carry into effect the provisions of the same, agreeably to the General Instructions (so far as the same can be made applicable to this Colony) heretofore issued by Her Majesty's Post Master General, at London, and now in force for the government of the Inland Postal Department in the other British North American Provinces.

2—That the said Post Master shall transmit to the respective Deputy Post Masters, for their guidance, copies of such of the said General Instructions as shall be approved of by the Governor and Council.

3—That the General Post Office at St John's shall be kept open daily (Sundays excepted) from 9 o'clock, A.M., until 4 o'clock, P.M.; and, when the mails shall not have previously arrived, the office shall be kept open until a later hour, for the purpose of complying with the 17th following rule: the unpaid letter box remaining open at all times: and the office shall also be kept open later when necessary for the purpose of receiving letters by ships arriving.

4—Letters when once put into an official Receiving Box become the property of the person to whom addressed; on no application however urgent, and on no authority whatever, must letters be returned to the writers.

5—Provided the Governor's letters so directed to the Master, and of such letters.

6—When periods under the Deputy letters the will then the letters shall writers—th away, not k (If address returned.

7—These received from within its

8—For the of letters v being called dow, or in

9—All previous must be str not paid." perfect ad they shall the writer

10—Wa be establish grows, H rum, Port Greenspor delivered a Letters rec Mail Carri ly stamped sary. Th named pla ceipt of le

11—Ma gus, shall Post Offi days, and from Har days, and Offices at

ried down the
their quitting
by the impor-
articles them-

Vessels which
dockage, ex-
another vessel
ckage, except-
whurf to ano-

l damage ari-
or any other
be injured.
he risk of the
t hours, to be
; and so on
s CROWDY.

51.)

is Honor the
nformity with
nd, passed in
entitled "An
land Posts in

appointed or
fect the provi-
ons (so far as
etefore issued
now in force
in the other

pective De-
the said Ge-
overnor and

e kept open
o'clock. P.M.;
d, the office
o complying
aining open
er when ne-
iving.

Box become
o application
letters be re-

5—Provided always, that the Governor or Officer Administering the Government, shall be permitted to withdraw any of his own letters so deposited, on giving to the Post Master or Deputy Post Master, an order in writing, under his hand, for the return to him of such letters.

6—When letters or packets have remained in the Post Office the periods undermentioned, and every effort to deliver them has failed, the Deputy Post Master shall write, in red ink, on the front of such letters the true reason of their non-delivery, and stamp them; he will then transmit them to the Post Office at St. John's, where such letters shall be opened by the Post Master, and be returned to the writers—that is to say: Dead—immediately. Refused, gone away, not known where, not known, not to be found, not called for, (If addressed to the Post Office)—kept for four months, and then returned.

7—These returns are to include all undelivered letters, whether received from other Offices or put into the Deputy's own Office, or within its delivery.

8—For the information of the public, a corrected alphabetical list of letters which may have lain ten days in any Post Office without being called for, shall, from week to week, be posted up at the window, or in some other conspicuous place in the respective office.

9—All letters addressed or re-directed to places requiring the previous payment of postage, but put into the Post Office unpaid, must be stamped with the office stamp and written upon "Postage not paid." All letters put into the Office without any or with imperfect addresses, shall be opened by the Post Master, to whom they shall be transmitted for the purpose, and be returned by him to the writers.

10—Way offices for the receipt and transmission of Letters shall be established at Aquaforte, Fermeuse, Renewse, Topsail, Kelligrews, Holyrood, Salmonier, Isle of Valen, Oderin, Garnish, Bello- rum, Portugal Cove, New Pelican, King's Cove, Catalina, and Greenspond. Letters addressed to any of the said places shall be delivered at the way office at such place by the Mail Carrier; and Letters received at any of such way offices shall be forwarded by the Mail Carrier to the next Post Office on the route, there to be regularly stamped and taxed, and forwarded or delivered as may be necessary. The Mail Carriers in passing through or calling at the above named places, shall remain a sufficient time for the delivery and receipt of letters at the way offices.

11—Mails for Portugal Cove, Harbor Grace, Carbonear and Brigus, shall be made up at 10 o'clock, A.M., and despatched from the Post Office at St. John's, at 10½ o'clock, A.M., on Tuesdays, Thursdays, and Saturdays; return mails for Portugal Cove and St. John's, from Harbor Grace, Carbonear, and Brigus, on Mondays, Wednesdays, and Fridays, at 9 o'clock, A.M., and despatched from the Post Office at said places at 9½ A.M.

12—Mails for New Perlican, Trinity, King's Cove, Catalina, and Bonavista, as also Mails for Bay Bulls, Ferryland, Aquaforte, Fermeuse, Renewse, and Trepassey, shall be made up at 10 o'clock, A.M., and despatched from the Post Office at St. John's at 10½ A.M., every Tuesday. Return mails for St. John's shall be made up at Bonavista and Catalina, at the expiration of 12 hours after the arrival at those places respectively of the mails from St. John's; and at Trinity at the expiration of one hour after the arrival of the Courier with the mails from Bonavista. At Trepassey, for St. John's, at the expiration of 12 hours after the arrival of the mail from St. John's; and at Ferryland and Bay Bulls, at the expiration of one hour after the arrival at those places of the Courier with the mail from Trepassey.

13—Mails for Topsail, Kelligrews, Holyrood, Salmonier, St. Mary's, and Placentia, shall be made up at 10 o'clock, and despatched from St. John's at 10½ o'clock A.M., every Thursday. Return mails for St. John's shall be made up at Placentia and St. Mary's respectively, at the expiration of 12 hours after the arrival of the mail from St. John's. The Courier with the mails from Placentia shall remain a reasonable time, not exceeding three hours, at Salmouier, for the arrival of the Courier with the mails from St. Mary's.

14—Mails for Placentia, Isle of Valen, Odein, Burin, Garnish, Bellowum, and Harbour Britain, and also for Greenspond, Fogo, and Twillingate, shall be made up at St. John's every alternate Thursday at 10 o'clock, A.M. Return mails for St. John's shall be made up at Harbor Britain at the expiration of twelve hours after the arrival of the mails from St. John's, and at Burin and Placentia at the expiration of one hour after the arrival of the Courier with the mails from Harbor Britain, and at Twillingate at the expiration of forty-eight hours after the arrival of the packet boat there, and at Fogo and Greenspond at the expiration of two hours after the arrival at those places respectively of the packet boat on her return to St. John's. Should the packet boats be detained at any of the said places by head winds, the mail to be kept open during such detention.

15—During the winter season, and at such times as the navigation of the different Bays shall be impeded by Ice, the Mails shall be despatched from and to the said places respectively as nearly in conformity with the above mentioned days and times, as may be found practicable.

16—When the mail packet arrives from Halifax with the English and Colonial mails, then the Inland mails shall be detained until two hours after the commencement of the delivery of the letters by the packet at St. John's.

17—Letters by the Inland Mails received at St. John's at any time before 9 o'clock, P.M. shall be delivered immediately after their receipt, by a Messenger from the office, at the residences in town (if known) of the several persons to whom the same may be addressed. Should the mails not arrive until after 9 o'clock, P.M., the

letters shall
delivery to com

18—In con
postage on le
be as follow
three pence
—books, pe
ounce up to
per ounce u
book or pan
despatches,
fices, on pu
branch of th
from the Sh

19—The
place out of

D

Stipendi
bert J Pius
zens.

Justices
Pack, Rich
cholas Mol
Thomas R
Forward,
Keeping, J

Clerks o
near—Joh

Coroner
Western
High C
cal Attend
Deputy
Harbou
and Actin
Brigus—S
bonear—S

Inspect
bonear—S

Board
Rev John
William

letters shall be delivered next morning by the Messenger : such delivery to commence not later than 8 o'clock, A.M.

18—In conformity with the provisions of the said Act, the rates of postage on letters sent to or received from any part of the Island, shall be as follows :—Every letter not exceeding half an ounce in weight, three pence currency ;—for every additional half ounce, three pence ;—books, periodicals, publications, and pamphlets, two pence per ounce up to six ounces in weight ; over that weight three pence per ounce up to sixteen ounces in weight, beyond which weight no book or pamphlet aforesaid shall be transmitted by post ;—letters, despatches, and other documents from and to any of the Public Offices, on public business—papers ordered to be printed by either branch of the Legislature—returns, writs and processes to and from the Sheriffs and their Deputies, and all newspapers—Free.

19—The inland postage on all letters to be sent by packet to any place out of Newfoundland, shall be prepaid.

By order,

CHRISTOPHER AYRE,
Acting Colonial Secretary.

DISTRICT OF CONCEPTION BAY.

Stipendiary Magistrates—Harbour Grace—Thomas Danson, Robert J Piusent. Carbonear—Joseph Ryan. Brigus—Charles Cozens.

Justices of the Peace—William Stirling, Joshua Green, Robert Pack, Richard Rankin, T Hutchings, John Stark, John Munn, Nicholas Molloy, William S Green, James Cormack, William Donnelly, Thomas Ridley, Edmund Haurahau, William W Bemister, George Forward, John Rorke, James L Prendergast, John Wilcox, James Keeping, John Leamon, Thomas H Ridley.

Clerks of the Peace—Harbour Grace—Lewis W Emerson. Carbonear—John Mackay. Brigus—William T Stentford.

Coroners—Harbour Grace—John Stark. Brigus—Joshua Green, Western Bay—John Curtis.

High Constables—John Connell. Goler—Richard Brace. Medical Attendant on Goler—William Stirling, M.D.

Deputy Surveyor of Crown Lands—Joshua Green, Brigus.

Harbour Grace—Comptroller of Customs and Navigation Laws, and Acting Sub-Collector of Colonial Revenue—Edward E Brown. Brigus—Sub-Collector of Colonial Revenue—Joshua Green. Carbonear—Sub-Collector of Colonial Revenue—Donald Bethune.

Inspectors of Pickled Fish—Harbour Grace—Henry Stowe. Carbonear—Simon Levi. Brigus—George Barsell.

Boards of Education—Brigus, Protestant—Rev W J Hoyles, Rev John Snowball, John Leamon, William S Mills, Joshua Green, William Wells, and William T Stentford.

Roman Catholic—Very Rev Denis Mackin, Dr. Molloy, John Murphy, Patrick Strapp, Richard Mandeville, Rev E O'Keefe, and James Cormack.

Harbour Grace, Protestant—Rev Henry P Disney, Rev William Shenstone, William Stirling, Richard Anderson, William Sæger Green, John Munn, and Thomas H Ridley.

Roman Catholic—Very Rev Charles Dulton, Daniel Green, Rodger Hanrahan, William Cormack, Arthur Thomey, Patrick Devereux, Francis Lynch.

Carbonear, Protestant—Rev J C Harvey, Rev Oliver Rouse, Rev James Norris, Rev Samuel W Sprague, Rev Thomas Angwin, William W Bemister, John Rorke, Edward Pike.

Roman Catholic—Rev John Dalton, Rev Bernard Duffy, Edmund Hanrahan, Joseph Ryan, John McCarthy, Dr Wright, William Brown.

Boards of Road Commissioners—Brigus, from Holyrood to Spaniard's Bay Long Bridge, inclusive—John Leamon, Chairman; Charles Cozens, James Hearn; James Cormack, Bay Roberts; John Byrne, Holyrood. Inspectors—Joshua Green, John Murphy.

Harbour Grace, from Spaniard's Bay Long Bridge to Barrett's Road, North East of David Connors' House—Andrew Drysdale, Chairman; Daniel Green, James Hanrahan, Francis Lynch; Moses Gosse, Upper Island Cove. Inspector—Richard Anderson.

Carbonear, from Barrett's Road, North East of David Connors', to Spout Cove Bridge—William W Bemister, John McCarthy, John Rorke, William Brown, George Forward. Inspector—Richard Anderson.

Lower Island Cove, from Western Bay to Bay-de-Verds—Richard Rankin; David Bransfield, Western Bay; Jabez Pike, Black Head; John Power, Kettle Cove; Thomas Neill, Bay-de-Verds.

Directors of Grammar Schools—Harbour Grace—John Munn, James L Prendergast, William Stirling, Daniel Green, William Donnelly, Thomas H Ridley, John Hayward. Professor—John I Roddick.

Carbonear—Edward Hanrahan, R Berny, M.D., John McCarthy, William W Bemister, Dr Wright, John Rorke, Edward Pike. Professor—Alexander O'Donovan, B.A.

Commissioners of Streets in Harbour Grace—Robert John Pinson, John Munn, Thomas H Ridley.

DISTRICT OF TRINITY BAY.

Stipendiary Magistrate—Benjamin Sweetland.

Justices of the Peace—William Kelson, John Regan, JQuintz, John Tilly, J Mew, R Ollerhead, Francis K Hepburn, A Bremner, Thomas B Job, Stephen Rendle, Charles Newhook, John Johnston.

Clerk of the Peace—Robt Bayly. **Coroner**—Benjamin Sweetland.

Gaoler—Ch
jamin Swe
Bayly. Re
iff—C Gra

Inspectors
Moses Tilly

Boards
Thomas M
son, Benja

Roman C
Murphy, Jo

Trinity I
J Hopkins,
Bemister.

Trinity I
Nightingale

Meadows,
Boards
ham Stone

M.D., Rob
Richard A

Trinity I
Stephen M

phen Ren
Grates Cov

From H
Chairman,
New Peril
Scilly Cov

Stipendi
Justice

William
Stewart,

Clerk o
(Greensp
Sweetlar

(Greensp
Registra
Fennel,

Inspect
ley. Ki

Boards
Julian
Moore, J

Bonav
Bertram
James S

Gaoler—Charles Granger. Deputy Surveyor of Crown Lands—Benjamin Sweetland. Sub-Collector of Colonial Revenue—Robert Bayly. Registrar of Deeds—Benjamin Sweetland Deputy Sheriff—C Granger.

Inspectors of Pickled Fish—Trinity—J Hart. Hants Harbour—Moses Tilly. Heart's Content—James Wiseman.

Boards of Education—Trinity Bay, North—Protestant—Rev Thomas M Wood, Francis K Hepburn, A Bremner, William Kelson, Benjamin Sweetland, Robert Bayly.

Roman Catholic—Rev J Scanlan, M Brine, John Murphy, P Murphy, John Eagan, John Power.

Trinity Bay, West—Protestant—Rev Henry Lind, R Ollerhead, J Hopkins, R Underhay, Charles Newhook, James Wiseman, John Bemister.

Trinity Bay, South—Protestant—Rev Henry Lind, Rev Adm Nightingale, Rev William P Wells, Stephen March, William Meadows, Stephen Rendell, and Richard Brooking.

Boards of Road Commissioners—Trinity Bay, North Side—William Stoneiman, Chairman; Francis K Hepburn, John Johnston, M.D., Robert Bayly; Alexander Bremner, Catalina. Inspector—Richard Ash.

Trinity Bay, South Side, from Grates Cove to Hants Harbour—Stephen March, Chairman, Richard Brooking, Old Perlican; Stephen Rendell, James L Mews, Hants Harbour; Thomas Cooper, Grates Cove. Inspector—John Collins.

From Hants Harbour to the head of the Bay—Robert Ollerhead, Chairman, Richard Underhay, Heart's Content; John Bemister, New Perlican; James Wiseman, Heart's Delight; John Kelland, Scilly Cove. Inspector—James Quintz.

DISTRICT OF BONAVIDA BAY.

Stipendiary Magistrate—William Sweetland.

Justices of the Peace—Sampson Miffen, N Smith, John T Oakley, William Brown, J Skelton, Lorenzo Moore, Joseph Shears, James Stewart, David Candow, John Levesconte.

Clerk of the Peace—John Lawrence. Coroner—John Levesconte, (Greenspond). Deputy Surveyor of Crown Lands—William Sweetland. Sub-Collector of Colonial Revenue—Lorenzo Moore, (Greenspond). Preventive Officer—William Sweetland, (Bonavista). Registrar of Deeds—William Sweetland. Deputy Sheriffs—Michael Fennel, Bonavista; Robert Smith, Greenspond.

Inspectors of Pickled Fish—Greenspond—N Smith, John T Oakley. King's Cove—J Connors.

Boards of Education—Bonavista Bay, North—Protestant—Rev Julian Moreton, Rev William Dyer, John T Oakley, Lorenzo Moore, Joseph B Highmore, Edwin Duder, John Ridout.

Bonavista Bay, South—Protestant—Rev Adm Nightingale, Rev Bertram Jones, Joseph Shears, Archibald Arnott, James Saint, James Stewart, David Candow.

Roman Catholic—Rev Thomas Waldron, William Hartory, James Connors, Michael Murphy, John Ryan, John Murphy, John Sullivan.

Boards of Road Commissioners—Bonavista—William Sweetland, Chairman; Joseph Shears, Archibald Arnott, James Saint, Edward Miffen. King's Cove—James Stewart, Chairman; David Candow, John Brown, Michael Murphy, James Dooley. Salvage—William Lang, Chairman; Henry Wills, William Dyke, Jr., James Pike, William Sanson. Greenspond—Lorenzo Moore, Chairman; Henry Duder, ——— Blandford, William Tuff, John Ridout.

DISTRICT OF FOGO.

Stipendiary Magistrate—John Peyton, Twillingate.

Justices of the Peace—S Lawler, J Bell, S Prowse, George E Ridout, J Fitzgerald.

Clerk of the Peace—A A Pearce. Coroner—William Stirling, M.D. Sub-Collector of Colonial Revenue—S Prowse, Twillingate. Sub-Collector of Colonial Revenue—J M Winter, Fogo. Deputy Surveyor of Crown Lands—John Peyton. Registrar of Deeds—John Peyton. Deputy Sheriffs—James Rice, Twillingate; John Ludlow, Fogo.

Inspectors of Pickled Fish—J Ludlow, Fogo. J Hodder, Twillingate.

Boards of Education—Protestant—Rev Thomas Boone, Rev John Brewster, John Peyton, J Colborne, Samuel Prowse, J Young, Rev J Kingwell, Jr.

Roman Catholic—Rev P Ward, John Brine, John Burke, Patrick Burke, Patrick Dwyer, J Fitzgerald, N Fitzgerald.

Fogo—Protestant—Rev E A Sall, Stephen Lawler, James Winter, Thomas Humphreys, John Bennett, John Freke, Senr., George E Ridout.

Boards of Road Commissioners—Twillingate—John Peyton, A Pearce, C Edmonds, John Young, Samuel Prowse. Inspector—James J Pearce. Fogo—Joseph Bessant Highmore, George E Ridout, Henry Findlater, James Winter, Stephen Ludlow. Inspector—James Fitzgerald. Burnt Island, Exploits—John Foote, William Minchinton, Edward Downton, Thomas Butt, Wm Sevin.

DISTRICT OF FERRYLAND.

Stipendiary Magistrate—Robert Carter.

Justices of the Peace—Peter Winsor, James W Saunders, Allan Goodridge, Matthew Morry.

Clerk of the Peace—Henry G Clow. Coroner—John Stephenson. Gaoler—Francis Geary. Sub Collector of Colonial Revenue—Robert Carter. Deputy Surveyor of Crown Lands—Robert Carter.

Boards of
Carter, Matt
an Goodridge
Roman Ca
J Cashin, E
Bay Bulls
Coady, W I
Commis
Ferryland-
ter, Peter V
Board of
James Carte
Coady, Bay

DISTR.

Stipendia
nibal Murc

Justices of
Chambers,
Clerk of
Collias. S
Preventive
Deeds—F

Inspector
rier, Isle of
rasheen; J
John Braz
tle Placent

Boards
F L Brads
Alexander

Roman
John Riel
John Riel
St Mar
Phelan, J
Murray.

Trustee
gius Now
ber of Se

Commis
Ryan, H

Commis
—Rev J
liam Loc

Board
Rev W
Riolley.

*Boards of Education—Protestant—*Rev H H Hamilton, Robert Carter, Matthew Morry, James H Carter, James W Saunders, Alban Goodridge, James Carter.

*Roman Catholic—*Rev James Murphy, Michael Devereux, J Doyle, J Cashin, Edward Condon, Henry O'Neal, Philip Jackman.

*Bay Bulls—Roman Catholic—*Rev P Cleary, Martin Williams, M Coady, W Denn, Michael Driscoll, J Blackler, T Driscoll.

*Commissioners for the Establishment of a Commercial School at Ferryland.—*Rev H H Hamilton, Rev James Murphy, Robert Carter, Peter Winser, Luke Brown.

*Board of Road Commissioners—*Matthew Morry, Chairman ; James Carter, Thomas Norris ; Peter Winser, Aquaforte ; Michael Coady, Bay Bulls.

DISTRICT OF PLACENTIA AND ST. MARY'S.

*Stipendiary Magistrates—*Francis L Bradshaw, Placentia. Hannibal Murch, St. Mary's.

*Justices of the Peace—*G Simms, J Murphy, W G Bradshaw, A Chambers, W Lush, J Furlong, G LeMessurier.

*Clerk of the Peace—*L Collins. *Coroner—*vacant. *Goaler—*L Collis. *Sub-Collector of Colonial Revenue—*W G Bradshaw. *Preventive Officer—*Hannibal Murch, St. Mary's. *Registrar of Deeds—*F L Bradshaw. *Deputy Sheriff—*Luke Collins.

*Inspectors of Pickled Fish—*T Walsh, Placentia ; G LeMessurier, Isle of Valen ; M Shea, Little Placentia ; E Hennessey, Mercedes ; James Murphy, Placentia ; Abraham LeMessurier, and John Brazill, St. Mary's ; J Curtis, Salmonier ; Michael Brady, Little Placentia.

*Boards of Education—*Placentia, Protestant—Rev W K White, F L Bradshaw, W G Bradshaw, James Butler, Thomas E Collett, Alexander Chambers, G LeMessurier.

*Roman Catholic—*Rev Pelagius Nowlan, Rev William Forristal, John Rielley, James Furlong, Patrick Hogan, Anthony Whelan, John Rielley, Herring Bay.

*St. Mary's, Roman Catholic—*Rev J Ryan, J Walsh, Thomas Phelan, James Fagan, William Burke, Michael Fagan, Michael Murray.

*Trustees of Commercial School at Great Placentia—*Rev Pelagius Nowlan, F L Bradshaw. *Master—*M Kelly. *Average number of Scholars, 50.*

*Commissioners of Commercial School at St. Mary's—*Rev John Ryan, Hannibal Murch, William Lush, and John Walsh.

*Commissioners for the Erection of a Breakwater at Oliver's Cove—*Rev James Walsh, Oliver's Cove ; William LeMessurier, William Lockyer, Thomas Lockyer, John Leonard, Isle of Valen.

*Board of Road Commissioners—*Francis L Bradshaw, Chairman ; Rev William Forristal, Roger F Sweetman, Michael Kelly, John Rielley.

DISTRICT OF BURIN.

Stipendiary Magistrates—William Hooper, Burin. J Blackburn, Grand Bank. Stephen O Pack, Lamaline.

Justices of the Peace—C Benning, J Thorp, James Moran, E Evans, Thomas E Hollett.

Sub-Collector of Colonial Revenue at Lamaline—Jas Winter. Deputy Surveyors of Crown Lands—William Hooper, John Haddon, Stephen O Pack. Preventive Officer—J Blackburn, Grand Bank.

Clerk of the Peace—Patrick Morris. Acting Coroner—W Hooper. Gaoler—E Glynn. Sub-Collector of Colonial Revenue—Thomas Birkett. Registrar of Deeds—William Hooper. Deputy Sheriff—William Butler.

Inspectors of Pickled Fish—T Darby, Burin; I K Moore, St. Lawrence; G H Evans, Grand Bank; T Laskey, Lamaline; Matthew Marshall, Burin.

Commissioners for the Erection of a Breakwater—At Fortune—George Lake, John Snook, Thomas Rogers, James Hamlen, John Keating, John Spence. Grand Bank—John Patten, John Hickman, Seur., James, Hickman, George Forsey, Senr., William Evans, Henry Nicholl.

Commissioners for the Erection of a Breakwater at Lamaline—Stephen O Pack, Richard Lake, James Winter, James Haley, James Pittman.

Boards of Education—Protestant—Rev John C A Gathercole, Rev John S Peach, Thomas Darby, Philip Hollett, William Hooper, Joshua G Falle, Thomas Birkett.

Roman Catholic—Rev Michael Berney, Clement Benning, Edward Morris, John Power, Patrick Morris, Henry Slaney, Matthew Marshall.

Commissioners of Grammar School—Joshua G Falle, Clement Benning, T Birkett, Isaac Collins, Matthew Marshall, Philip Hollett.

Board of Road Commissioners—Edward Morris, Chairman; William Hooper, Clement Benning, Francis Bertram, Francis Moran. Inspector—William Butler.

DISTRICT OF FORTUNE BAY.

Stipendiary Magistrate—Thomas E Gaden.

Justices of the Peace—T Read, Thomas Renouf, Andrew Ellis, John Chapman, William Gallop, John Stevens.

Clerk of the Peace—A Ellis. Coroner—T E Gaden. Sub-Collector of Colonial Revenue—T E Gaden. Sub-Collectors of Colonial Revenue—La Poile, T. Road; Gaultois, T Winter. Preventive Officer—T Rogers. Fortuno. Deputy Surveyor of Crown Lands—Charles DeLiel, Port-aux-Basque. Registrar of Deeds—T E Gaden, Harbour Briton. Deputy Sheriff—John Trood, Harbour Briton; Richard Collett, Harbour Beaufort.

Inspector
vey, Jersey
James Cha
Gaultois.

Boards
E Gaden, J
Marshall,

Burgeo
Cléments,
Thomas R

Roman
Burke, P

Commis
Jersey H
Ellis, H

Boards
Ellis, Tho
ten; John
Grandy, F
Harbour
Bay to Ca
Matthews

Justice

FROM TH

1749
1750—5
1753—5
1755—5
1757—5
1760
1761—0
1764—0
1769—7
1772—7
1775
1776—
1779—
1782—
1786—
1789—

Inspectors of Pickled Fish—J Trood, Harbour Briton; D Harvey, Jersey Harbour; H Bagg, La Poile; J Cluett, Belloram; James Chambers and Matthew Row, Burgeo Islands; John Holden, Gaultois.

Boards of Education—Protestant—Rev J G Mountain, Thomas E Gaden, John Chapman, William Gallop, Andrew Ellis, Rev John Marshall, Rev E Colley.

Burgeo and La Poile, Protestant—Rev J Cunningham, Philip Clements, G Picot, Burgeo; Rev Thomas Appleby, Henry Dicks, Thomas Reed, J Tassel, M.D., La Poile.

Roman Catholic—Rev M Berney, Rev M Cullen, P Burke, W Burke, P Burke, Jr., T Kinshela, P Hearn.

Commissioners for the Establishment of a Commercial School at Jersey Harbor—Rev G J Mountain, Thomas E Gaden, Andrew Ellis, H Clinton, J Chapman.

Boards of Road Commissioners—Harbour Briton Board—Andrew Ellis, Thomas E Gaden, John Trood, H Clinton, M.D., Harbour Briton; John Chapman, Jersey Harbour. Belloram—John Cluett, John Grandy, Belloram; Patrick Burke, St Jacques; Thomas E Gaden, Harbour Briton; James Pine, English Harbour. Beyond Fortune Bay to Cape Ray—Rev T Appleby, Rev J Cunningham, William Matthews, Thomas Read, Philip Clements.

Justice of the Peace for Labrador—Nathan Norman.

GOVERNORS OF NEWFOUNDLAND

FROM THE EARLIEST PERIOD OF WHICH THERE ARE ANY AUTHENTIC RECORDS IN THE SECRETARY'S OFFICE.

1749	Rodney	1792—93..	King
1750—52	Drake	1794—96..	Sir J Wallace
1753—54	Bonfoy	1797—99..	Hon W Waldegrave
1755—56	Dorrill	1800—1 ..	Sir C M Pole
1757—59	Edwards	1802—3 ..	Gambier
1760	Webb	1804—6 ..	Sir E Gower
1761—63	Graves	1807—9 ..	Holloway
1764—68	Palliser	1810—12..	Sir J Duckworth
1769—71	Hon J Byron	1813—15..	Sir R G Keats
1772—74	Shuldham	1816—17..	Pickmore
1775	Duff	1818—25..	Sir C Hamilton
1776—78	Montagu	1825—34..	Sir T Cochrane
1779—81	Edwards	1834—41..	Prescott
1782—85	Campbell	1841—46..	Sir John Harvey
1786—88	Elliott	1847	Sir J G Le Marchant
1789—91	Milbanke		

CHARITABLE SOCIETIES, PUBLIC COMPANIES, &c.

Benevolent Irish Society—President—Hon Laurence O'Brien. Vice-President—(vacant). First Assistant—Philip F Little. Second Assistant—Robert Kent. Treasurer—John Kavanagh. Secretary—George J Hogsett. Chairman of Orphan Asylum School—Patrick Bruzil. Chairman of Charity—(vacant). Chairman of Review and Correspondence—Thomas J Kough. Secretary Orphan Asylum School—Bernard Duffy.

Chamber of Commerce—Hon William Thomas, Nicholas Stabb, Peter McBride, Kenneth McLea, George T Brooking, Patrick Tasker, James J Grieve, Hon Charles F Bennett, Eugenius Hurvey, Thomas Row, Hon Laurence O'Brien, Thomas B Job, Robert Prowse. President—Hon William Thomas. Vice-Presidents—Peter McBride, and James J Grieve. Treasurer and Secretary—Nicholas Stabb.

Association of Underwriters, St. John's—Commissioner—Robert Prowse. Surveyor—James Pitts. Banker—Bank of British North America. Committee—George T Brooking, Chairman; Hon Wm Thomas, James J Grieve, Hon Laurence O'Brien, Peter McBride, Kenneth McLea, Thomas B Job, Hon Charles F Bennett. Agent—John B Bulley.

Newfoundland Natives' Society—President—James S Clift. First Vice-President—Thomas G Morry. Second Vice-President—John Barron. Treasurer—George T Brooking. Chairman of Relief—Philip Duggan. Chairman of Review and Correspondence—Thomas J Kough. Secretary—William Pitts. Assistant Secretary—Randall Green.

St. George's Society—President—Hon William Thomas. Vice-Presidents—Hon William B Row, and Robert Prowse. Treasurer—Peter G Tessier. Secretary—William V Whiteway. Chairman of Committee of Charity—Ven Archdeacon Bridge. Secretary and Treasurer—John C Withers.

St. Andrew's Society—President—James J Grieve. Vice-President—Patrick Tasker. Treasurer—Alexander Mitchell. Secretary—William Boyd. Committee of Charity—Robert Rodger, Charles Rankin, Robert Wilson. Medical Adviser—Dr. Carson.

Newfoundland British Society—President—Edward Knight. Vice-President—Nathaniel Hill. Treasurer—Charles Rankin. Secretary—James McLarty. Medical Attendant—Dr Carson.

Mechanics' Society—President—Valentine Merchant. Vice-President—Edward Kennedy. First Assistant—John White. Second Assistant—John Power. First Treasurer—John Coady. Second Treasurer—Andrew Quirk. Third Treasurer—John Maher. Secretary—John Kenney.

Branch Bank of British North America—Local Directors—Peter McBride, Thomas B Job, George T Brooking, James J Grieve. Manager—Andrew Milroy. Accountant—R C Fergusson. Teller—Samuel Cowan. Clerk and Messenger—William B Dyer.

Foreign
foundland.
William C
Kingdon
sett; Vic
Agents—
rin; And
Empire
Job. Con
William
Ellis, Har
Kingdon
Charles K
Francis K
per, Barin
Prowse.
man, Plac
Gaultois;
Kingdo

St. Joh
ward M
Tessier.
Seaton.
John H
William V

Mechan
Vice-Pre
surer—T
of Museu
L McKa
Noad. H
James S
Purcell,

St. Jo
Robert P
James S
tle, M. E
Winter,
Hon Ed
Secretar

St. J
—His P
mas. V
dy, Hon
B Job.
tle, Joh

New
Church
the Qu

NIES, &c.

ence O'Brien.
F Little. Se-
vaugh. Se-
sylum School
man of Review
Orphan Asy-

icholas Stabb,
Patrick Tas-
nius Hurvey,
Job, Robert
-Presidents—
d Secretary—

oner—Robert
British North
an; Hon Wm
eter McBride,
F Bennett.

S Clift. First
resident—John
an of Relief—
ndence—Tho-
at Secretary—

thomas. Vice-
se. Treasurer
way. Chair-
dge. Secreta-

. Vice-Presi-
ell. Secretary
dger, Charles
on.

ward Knight.
Charles Rankin.
Dr Carson.

hant. Vice-
White. Se-
John Coady.
John Muher.

ectors—Peter
nes J Grieve.
usson. Teller
B D, or.

Foreign Consulates—United States—Consular Agent for New-
foundland, Daniel McKenzie. Consular Agent, Harbour Grace—
William C St John.

Kingdom of Spain—Vice Consul for Newfoundland, John Hog-
sett; Vice-Consul, Harbor Grace, Thomas H Ridley. Consular
Agents—Francis C K Hepburn, Trinity Bay; Joshua G Falle, Bu-
rin; Andrew Ellis, Harbour Briton.

Empire of Brazil—Vice Consul for Newfoundland—Thomas B
Job. Commercial Agents—William C St John, Harbour Grace;
William Kelson, Trinity; Edwin Duder, Greenspond; Andrew
Ellis, Harbour Britain; William Gallop, Gaultois.

Kingdom of Portugal—Consul General for Newfoundland, Hon
Charles F Bennett. Vice-Consuls—John Munn, Harbour Grace;
Francis K Hepburn, Trinity; Edwin Duder, Greenspond; Wm Hoo-
per, Burin; Robert Pack, Carbonear; Stephen Lawler, Fogo; Samuel
Prowse, Twillingate; James H Carter, Ferryland; R F Sweet-
man, Placentia; Andrew Ellis, Harbour Briton; William Gallop,
Gaultois; T Renouf, La Poile; William T Stentaford, Brigus.

Kingdom of Prussia—Consul for St John's—Robert Prowse.

St. John's Library and Reading Room—President—Hon Ed-
ward M Archibald. Vice-Presidents—Andrew Milroy, Peter G
Tessier. Treasurer—Thomas McCannan. Secretary—James
Seaton. Librarian—William Wheatley. Committee—C Brown,
John H Cozens, William Pitts, William Brine, Thomas R Smith,
William Warren, Junr.

Mechanics' Institute—President—Hon Edward M Archibald.
Vice-Presidents—Andrew Milroy, Hon Charles F Bennett. Treas-
urer—Thomas McCannan. Secretary—James Seaton. Curator
of Museum—Frederick R Page. Curator of Apparatus—Williar
L McKay. Committee—Oliver Goldsmith, A.C.G., Hon Jor
Noad. Hon the Speaker of the House of Assembly, Dr Winter,
James S Clift, Monier W Hutchings, Andrew H Thomson, James
Purcell, William Coyell.

St. John's Athenæum—Directors—Hon Edward M Archibald,
Robert Prowse, Hon Charles F Bennett, Dr Carson, John Fox,
James S Clift, Peter G Tessier, Thomas McCannan, Philip F Lit-
tle, M.H.A., Hon the Speaker of the House of Assembly, Dr
Winter, William Coyell, Hugh W Hoyles, M.H.A. President—
Hon Edward M Archibald. Vice-President—Robert Prowse.
Secretary—James Seaton.

St. John's and Newfoundland Auxiliary Bible Society—Patron
—His Excellency the Governor. President—Hon William Tho-
mas. Vice-Presidents—Hon Judge DesBarres, Hon James Crow-
dy, Hon William B Row, James J Grieve, Andrew Milroy, Thomas
B Job. Treasurer—Nicholas Stabb. Secretaries—Rev Elias Bret-
tle, John B Bulloy. Depositary—Thomas McCannan.

*Newfoundland School Society, in connection with the Colonial
Church and School Society*—Patron—Her Most Gracious Majesty
the Queen. Vice-Patrons—The Archbishops of Canterbury and

York. Local Committee—Hon William Thomas, President; Nicholas Stabb, Robert Prowse, Frederick B T Carter, Charles Simms, William L Anthony, Charles Ayre, John Winter, M.D., George H Wilson. Secretary—Rev Thomas Dunn.

Rev Thos Dunn, General Superintendent. Mr Hurst, St John's; Rev W Shannon, Pouch Cove; Rev J and Mrs Baggs, Trinity Harbour; Rev R and Mrs Dyer, Greenspond; Rev W and Mrs Meek, St George's Bay; Rev J and Mrs Marshall, Belloram; Mr and Mrs Crosby, Southside, St John's; Mr and Mrs Maddocks, Portugal Cove; Mr and Mrs Earle, Spaniard's Bay; Mr and Mrs Crossman, Twillin; Mr and Mrs Bishop, Petty Harbour; Mr Martin, Torbay; Mr and Mrs Mills, Brigus; Mr Kelligrew, Baroneed; Mr Ryall, Bay Roberts; Mr Lever, Heart's Content; Mr Pilcher, Bonaventure; Mr Moore, English Harbour; Mr Haddon, Bonavista; Mr Minty, Bird Island Cove; Mr Cutler, Fair Island; Mr Spurell, Fool's Island; Mr Bishop, Swain's Island; Mr Jeans, Change Island. Mr Richards, Herring Neck; Mr Tough, Harbour Beaufette; Miss Morris, St John's; Mrs Ryall, Salmon Cove; Miss Furnesux, Port-de-Grave; Mr and Mrs Gardner, Harbour Grace; Miss Mills, Carbonar; Miss Winter, Fogo.

Newfoundland Wesleyan Methodist School Society, Instituted 1851—Committee—Rev Edmund Bottorell, Rev Samuel Sprague, Rev Thomas Angwin, John Bemister, John Bulley, Senr., John Munn, Rev James Norris, Stephen Percy, James J Rogerson, Rev William E Shenstone. Rev John Snowball, Joseph Woods. Rev Edmund Botterell, Chairman. Rev James Norris, Secretary. James J Rogerson, Treasurer.

St. John's Gas Light Company—Directors—Benjamin G Garrett, Hon William Thomas, James J Grieve, Robert Prowse, Edward Bowring, Christopher Ayre, Thomas B Job. President—James J Grieve. Vice-President—Edward Bowring. Treasurer and Secretary—John M Brine. Manager—Andrew Thomson.

St. John's Water Company—Directors—Hon William Thomas, Robert Prowse, Hon Charles F Bennett, Peter McBride, George T Brooking, Thomas B Job, James J Grieve. President—Hon William Thomas. Vice-President—Robert Prowse. Secretary—William J Ward.

Agricultural Society—Patron—His Excellency Sir John Gaspard Le Marchant. President—James Clift. Vice-Presidents—Andrew Milroy, Charles Simms, Patrick Kough, Michael Scanlan. Treasurer—Thomas B Job. Secretary—William F Rennie.

Farmers' Mill Company.—Patron, His Excellency Sir John Gaspard Le Marchant. Directors—B Robinson, B G Garrett, G Brine, Michael Scanlan, Michael Allen. Treasurer—James Clift. President—Patrick Keough.

Roman Catholic Total Abstinence Society—President—Rev Kyran Walsh.

Britannia Life Assurance Office, London—St. John's, Branch, Agent, Robert Prowse.

Pheni
Agents for
Colonial
under Act
£500,000

Allian
London-
laud—Br

Royal
Sterling.

Nation
ta', £500
served p
Crowdy,
Stabb.
muel Ca

Equite
000 stg.
Brien, H
M Barne
for New

St. Jo
William
Edward

Sons of
Lieuten
cretary—

Agenc
Grace—
dor—Ph

Conce
James J
Ridley,

St. J
Thomas

Dore
Miss F

Masc
J.W.—

Treasu
John M

Grac
G.W.F

C Jame
Manley

Ben
Robins

Crowd

President; Ni-
arter, Charles
Winter, M.D.,

rst, St John's;
s, Trinity Har-
and Mrs Meek,
; Mr and Mrs
locks, Portugal
Mrs Crossman,
n, Torbay; Mr
Ryall, Bay Ro-
n-venture; Mr
Mr Minty, Bird
Fool's Island;
l. Mr Richards,
Miss Morris, St
Port-de-Grave;
arbonear; Miss

icty, Instituted
muel Sprague,
ey, Senr., John
Rogerson, Rev
Woods. Rev Ed-
cretary. James

amin G Garrett,
rowse, Edward
ident—James J
asurer and Se-
nson.

William Thomas,
cBride, George
President—Hon
b. Secretary—

ir John Gaspard
dents—Andrew
Scanlan. Treas-
nie.

ir John Gas-
arrett, G Brine,
s Clift. Presi-

dent—Rev Ky-

ohn's, Branch,

Phenix Fire Assurance Company of London—Established 1782—
Agents for Newfoundland, W & G Rendell, St John's.

Colonial Life Assurance Company—Registered and Empowered
under Act of Parliament, 7 and 8 Victoria, cap. 110. Capital,
£500,000. St John's Branch—Agent, George T Brooking.

Alliance British and Foreign Life and Fire Assurance Company,
London—Capital, Five Millions Sterling. Agents for Newfound-
land—Brooking & Son.

Royal Insurance Company, Liverpool—Capital, Two Millions
Sterling. St John's Branch—Agents, Brocklebank & Anthony.

National Loan Fund Life Assurance Society of London—Capi-
tal, £500,000 sterling, in addition to about £100,000 currency, of re-
served profits. Directors—Hugh W Hoyles, Chairman, Hon James
Crowdy, Hon Joseph Noad, Hon Charles F Bennett. Nicholas
Stabb. Solicitor—Frederick B T Carter. Medical Examiner—Sam-
uel Carson, M.D. Agent for Newfoundland—Edward L Jarvis.

Equitable Fire Insurance Company of London—Capital, £500,-
000 stg. Directors—James J Grieve, Chairman, Hon Laurence O'-
Brien, Hon the Speaker of the Assembly, Robert Prowse, William
M Barnea. Standing Counsel—Hon the Attorney General. Agent
for Newfoundland—Edward L Jarvis.

St. John's Phenix Volunteer Fire Company—First Director—
William Coyell. Second Director—Samuel Loveys. Secretary—
Edward Kennedy.

Sons of Temperance Fire Brigade.—Captain—William Jenkins.
Lieutenant—Samuel Carnell. Treasurer—Hamilton Fleming. Se-
cretary—Henry Winton, Junior.

Agents for Lloyds.—St. John's—Brooking & Son. Harbour
Grace—Thomas Ridley & Sons. Burin—William Hooper. Labra-
dor—Philip De Quitteville.

Conception Bay Electric Telegraph Company.—Directors—
James J Grieve, Peter McBride, John Munn, Robert Pack, Thomas
Ridley, Thomas B Job, and the Hon Charles F Bennett.

St. John's Factory—President and Treasurer—Hon William
Thomas. Secretary—Robert Prowse.

Dorcas Society—Treasurer—Mrs Thomas B Job. Secretary—
Miss Finlay.

Masonic—W.M.—Alexander Fraser. S.W.—Robert Prowse.
J.W.—W L Solomon. S.D.—Lieut Tyler. J.D.—W V Whiteway.
Treasurer—D J Henderson. Secretary—R R W Lilly. Tyler—
John Mullins.

Grand Division of the Sons of Temperance.—James J Rogerson,
G.W.P. David Selater, G.W.A. John B Harris, G.S. Thomas
C James, G.T. Rev J Norris, G.Ch. David Reid, G.C. Jubez
Manley, G.S.

Benefit Building Society and Savings Fund.—Directors—Bryan
Robinson, Q C, President, Hon C F Bennett, G T Brooking, Hon J
Crowdy, K McLea, Hon L O'Brien, N Stubb. Trustees—Hon C

F Bennett, George T Brooking. Bankers—Bank of British North America. Solicitor—Hugh W Hoyles. Auditors—William H Mare, David J Henderson. Secretary—William J Ward.

Newspapers Published in the Colony, with days of Publication—
 St John's—*Royal Gazette*, Tuesday; *Public Ledger*, Tuesday and Friday; *Newfoundlander*, Thursday; *Times and General Commercial Gazette*, Wednesday and Saturday; *Newfoundland Patriot*, Monday; *Morning Post*, Tuesday, Thursday, and Saturday; *Morning Courier*, Wednesday and Saturday; *Banner of Temperance*, Saturday, (semi-monthly); *Newfoundland Express*, Tuesday, Thursday, and Saturday. Conception Bay—*Weekly Herald*, and *Conception Bay Advertiser*, Wednesday

Monthly Magazine—*Newfoundland Guardian*, and *Christian Intelligencer*, St. John's

Manufactories, Mills, Works, &c.—St John's—2 Corn Mills, 1 Saw Mill, 1 Bone Mill, 1 Gas Manufactory, 1 Iron Foundry, 1 Brewery, 1 Water Works. Conception Bay—Brigus—1 Corn Mill. Harbour Grace—1 Corn Mill. Trinity Bay—1 Saw Mill.

Benevolent Irish Society of Conception Bay—President—W Stirling, M.D. Vice-President—J Fitzgerald. 1st Assistant—T Power. 2nd Assistant—P Devereux. Treasurer—R Walsh. Secretary—J Fennel. Chairman of Charity—vacant. Chairman of Review and Correspondence—James B Drysdale.

Dorcas Society of Harbour Grace—President and Treasurer—Mrs Drysdale. Secretary—Mrs St John.

Carbonear Wesleyan Tee-total Society—President—Rev J Norris. First Vice President—R Pack. Second Vice President—G Apsley. Treasurer—G Rorke. First Secretary—S Levi, Second Secretary—T Newell, Jr.

Harbour Grace Total Abstinence Society—President—John Munn. Vice-Presidents—R J Pinsent and J I Roddick. Secretary and Treasurer—W C St John.

Carbonear Natives' Society—President—W H Taylor. Treasurer—Edward Pike. Secretary—Thomas Newell, Jr.

Carbonear Dorcas Society—President and Treasurer—Mrs Norris. Secretary—Mrs Bethune.

Trinity Benefit Club, Instituted 1838—President—J Johnston, M.D. Vice-President—E K Hepburn. Treasurer—W Kelson. Secretary—Samuel A Gent. Stewards—Robert Grant, J Penny, Mark Boston, John Doherty, and R Woolridge.

ACTS

- 1—An Act Relating to the packing of the colony
- 2—An Act
- 3—An Act relating to houses
- 4—An Act relating to St John's
- 5—An Act relating to the production of
- 6—An Act relating to the
- 7—An Act
- 8—An Act
- 9—An Act relating to the
- 10—An Act relating to the
- 11—An Act relating to this
- 12—An Act relating to the Duties of the
- 13—An Act relating to the
- 14—An Act relating to the
- 15—An Act relating to the

Present

Canada
 and King
 Nova
 John H
 New
 Head. I
 Prin
 Banner

ACTS PASSED BY THE LEGISLATURE, 1851.

- 1—An Act to continue an Act passed in the Fourth year of the Reign of Her present Majesty, entitled an Act to regulate the packing and inspection of Pickled Fish for exportation from the colony.
- 2—An Act to improve the Copper Currency of the Island.
- 3—An Act in addition to the Act for the Management of Lighthouses in this Colony.
- 4—An Act for the establishment and regulation of a Penitentiary in St John's.
- 5—An Act to authorise the issue of Treasury Notes, and for the reduction of the Public Debt of the Colony.
- 6—An Act for the appointment of Electric Telegraph Commissioners, and for incorporating Electric Telegraph Companies.
- 7—An Act for the granting Patents for useful inventions.
- 8—An Act for the encouragement of Education.
- 9—An Act to extend the time allowed by the St John's Rebuilding Act, for the removal of Wooden Buildings in certain parts of the said town, and for other purposes.
- 10—An Act to amend the practice and to fix and establish the Terms or Sittings of the Northern and Southern Circuit Courts, and to provide for the appointment of Clerks and Registrars and other officers in the several Electoral Districts.
- 11—An Act for the establishment and regulation of Inland Posts in this Colony.
- 12—An Act to continue an Act granting to Her Majesty certain Duties on Goods, Wares, and Merchandise imported into this Colony and its dependencies.
- 13—An Act for granting to Her Majesty a sum of money for defraying the expenses of the Civil Government of the Colony for the year ending 31st December, 1851, and for other purposes.
- 14—An Act for granting to Her Majesty a sum of money for constructing and repairing Roads, Streets, and Bridges within this Colony, and for other purposes.
- 15—An Act to provide for the Contingent Expenses of the Legislature.

Present Governors of other North American Colonies.

Canada.—Governor General—The Right Hon the Earl of Elgin and Kincardine.

Nova Scotia.—Lieutenant Governor—Lieutenant General Sir John Harvey, K C B, and K C H.

New Brunswick.—Lieutenant Governor—Sir Edmund Walker Head, Bart.

Prince Edward Island.—Lieutenant Governor—Sir Alexander Bannerman.

British North
—William H
ard.

Publication—
Tuesday and
eral Commer-
and Patriot,
d Saturday;
er of Tempe-
press, Tues-
ekly Herald,

Christian In-

Corn Mills, 1
dry, 1 Brew-
t Corn Mill.
Mill.

ent—W Stir-
ant—T Pow-
alsh. Secre-
Chairman of

Treasurer—

Rev J Norris.
t—G A psley.
cond Secreta-

ident—John
Secretary

or. Treasu-

r—Mrs Nor-

J Johnston,
—W Kelson.
at, J Penny,

PORT OF ST. JOHN'S,

AN ACCOUNT OF VESSELS ENTERED INWARDS AND CLEARED OUTWARDS, AT THE ISLAND OF NEWFOUNDLAND, IN THE YEAR ENDED 5TH JANUARY, 1851.

COUNTRIES.		INWARDS.			OUTWARDS.		
		No.	Tons.	Men.	No.	Tons.	Men
EUROPE							
Great Britain	British Ves	190	28351	1568	112	15486	885
	Foreign do				3	324	20
Jersey and } Guernsey }	British do }	13	1516	102	4	664	42
	ditto				7	975	55
	Foreign do				1	177	10
Ionian Islands	British do				2	259	14
France	Foreign do				1	89	7
Spain	British do	72	11508	615	19	2018	132
	Foreign do	30	3098	245	56	6870	533
Portugal	British do	74	9255	574	82	10614	677
	Foreign do	1	177	10			
Germany	British do	28	4578	231			
	Foreign do	2	233	15			
Denmark	British do	11	1802	93			
	Foreign do	1	91	5			
Naples	British do				31	4196	249
	Foreign do				1	299	11
Tuscany	British do	2	299	14	24	3199	183
	Foreign do				15	2044	157
Sicily	British do	1	147	9	3	357	25
	Foreign do				2	352	13
Roman States	British do				6	574	39
Sardinia	British do	12	1603	97			
Austria	Foreign do				1	128	12
AFRICA							
Madeira	British do				2	221	14
AMERICA							
British N A } Colonies }	British do }	519	45227	2842	533	53929	3245
	Foreign do				1	146	7
Brit. W. Indies	British do	31	4395	269	71	9642	592
Spanish ditto	British do	22	2994	163	14	1738	105
	Foreign do	44	6028	468	2	285	16
Danish ditto	British do				1	118	7
United States	British do	114	12823	667	36	3193	219
	Foreign do	20	3525	157	3	470	22
Brazils	British do				8	1455	66
	Foreign do	5	1053	59	53	10173	575
Saint Peter's	British do	45	598	120	14	217	32
TOTAL.		1238	139377	8350	1109	130368	7972

A CONSOL
ISLAND IN T
THE AGGRE
ARTICLES, WIT

Articles In

Ale, Porter,
Apples....
Bacon and H
Beef (salted
Brandy, Wh
Bread or Bi
Butter.....
Candles....
Cattle (neat
Cheese.....
Cigars.....
Clocks and
Coals.....
Cocon.....
Coffee.....
Flour.....
Furniture
Goods, War
enumera
Horses, Ma
Lumber...
Molasses.
Oatmeal ar
Oil and Bl
and Sw
Pork (salte
Rum.....
Salt.....
Sheep, Cal
Shingles..
Sugar, Re
U
Ba
Tea.....
Timber, i
and Sea
Tobacco (S
Wine, in
not

PORT OF ST. JOHN'S,

A CONSOLIDATED ACCOUNT OF THE GOODS IMPORTED INTO THIS ISLAND IN THE YEAR, ENDED 5TH DAY OF JANUARY, 1851, SHEWING THE AGGREGATE QUANTITIES AND VALUE OF THE VARIOUS ARTICLES, WITH THE AMOUNT OF DUTY.

CLEARED OUT-
YEAR ENDED

OUTWARDS.

	Tons.	Men
2	15486	885
3	324	20
4	664	42
7	975	55
1	177	10
2	259	14
1	89	7
9	2018	132
6	6870	533
2	10614	677
31	4196	249
1	299	11
4	3199	183
5	2044	157
3	357	25
2	352	13
6	574	39
1	128	12
2	221	14
3	53929	3245
2	303	15
1	9642	592
4	1738	105
2	285	16
1	118	7
6	3193	219
3	470	22
8	1455	66
3	10173	575
4	217	32
9	130369	7972

Articles Imported.	Quantity Imported	Value.		Duty.	
Ale, Porter, &c.....		3308	11	330	16 1
Apples.....	1738 bls	887	9 6	130	7 0
Bacon and Hams....	746:0:1 cwts	2113	1 7	186	10 8
Beef (salted or cured)	2726½ bls	4348	2 6	272	13 0
Brandy, Whiskey &c.	26171 gals	6411	14 11	3925	13 0
Bread or Biscuit....	92150:3:9 cwts	50590	18 6	1151	17 8
Butter.....	16114:3:25 "	45937	11 8	1611	10 11
Candles.....		4512	18 9	338	15 7
Cattle (neat).....	2851	17301	4 5	867	18 3
Cheese.....	346:1:23 cwts	604	0 8	86	12 5
Cigars.....	224800	564	10 0	56	4 0
Clocks and Watches.		391	12 2	39	3 3
Coals.....	21027¼ tons	19260	9 9	1051	7 3
Cocoa.....	18:3:7 cwts	44	11 3	4	14 0
Coffee.....	1086:1:10 "	1409	5 5	258	3 5
Flour.....	113576½ bls	122225	9 8	8518	4 9
Furniture.....		1162	12 7	116	5 2
Goods, Wares, &c, not enumerated.....		343470	0 5	17173	18 5
Horses, Mares, &c..	84	784	0 0	42	0 0
Lumber.....	4341509 Feet	9870	8 5	542	16 9
Molasses.....	916984 gals	46197	12 7	5677	18 4
Oatmeal and In. Meal	14748 bls	8732	15 10	368	13 2
Oil and Bl. bber, Fins and Skins.....		17	8 5	1	0 9
Pork (salted or cured)	27058½ "	66322	18 3	3901	19 1
Rum.....	93600 gals	9375	0 2	3294	2 3
Salt.....	34912½ tons	23504	4 10	872	16 2
Sheep, Calves & Pigs	3903	1166	6 0	195	3 0
Shingles.....	5075750	2418	16 0	253	15 9
Sugar, Refined....	1306:1:26 cwts	2396	5 4	489	11 7
Unrefined....	9555:2:0 "	9756	3 8	2293	6 6
Bastard.....	48:2:27 "	50	0 0	12	3 9
Tea.....	310,016 lbs	14920	18 4	3875	4 1
Timber, includ. Balk and Scantling.....	1644½ tons	1719	3 8	123	5 2
Tobacco (M and L) :	293270 lbs	7301	5 3	2443	18 5
Stems.....	73:2:0 cwts	27	0 0	7	7 3
Wine, in bottles....	453 gals	316	14 0	67	19 0
not in bottles.	13391 "	3367	0 0	1337	16 0
Totals.....		832787	15 5	61921	11 10
10 Per Cent. on St. John's Collections.....				5,134	13 2
Total Revenue.....				£67,056	5 0

STATEMENT,

SHOWING THE TOTAL AMOUNT RECEIVED AND PAID BY THE COLONIAL TREASURER FOR EACH PARTICULAR SERVICE, FOR THE YEAR ENDING DECEMBER 31ST, 1850.

RECEIPTS FOR THE YEAR.

	£	s	d
Customs Revenue	64,524	7	0
Light Dues	2,390	16	11
Rent Fund	1,197	1	6
License Fund, Fines, and Forfeitures	739	1	2
Fees from Public Officers	791	19	5
From North America Clergy Estimate	800	0	0
Treasury Notes	5,200	0	0
Raised by Loan under Colonial Act	7,008	14	8
Total	82,652	0	8

EXPENDITURE FOR THE YEAR.

	£	s	d
Civil Department	5,906	0	0
Customs Establishment	4,274	5	6
Judicial Department, Salaries and Contingencies	6,233	15	3
Police and Magistracy	5,861	0	0
Ecclesiastical Department	800	0	0
Legislative ditto	3,903	1	11
Printing and Stationery	463	6	6
Gaol Expenses	472	17	2
Coroners	219	6	6
Fuel and Light	445	8	6
Repairs of Court House, &c.	147	6	6
Ditto of Government Buildings	230	0	0
Relief of the Poor	4,981	15	0
Roads and Bridges	3,748	7	1
Postage and Incidentals	100	10	5
Public Institutions	605	0	0
Shipwrecked Crews	124	10	7
Education	6,079	11	8
Light Houses	1,784	15	0
Registration of Voters	147	4	6
Interest on Loans	6,089	9	11
Pensions	170	6	6
Crown Lands Act	255	0	10
Loans Paid Off	11,453	18	0
St. John's Rebuilding Act	1,760	3	0
Ferries and Packets	665	15	0
Bounty on Killing Wolves	5	0	0
Presentation Convent and Schools	2,500	0	0
Miscellaneous	2,379	6	1
Total	£71,807	1	5

NE
PAYABLE UND

Apples, the
Bacon and H
Beef, salted
Two Hun
Bread or Bis
Batter, the
Calves, Shee
Cheese, the
Cigars, the
Cocoa, the
Coffee, the
Coals, the to
Flour, the b
Horses, Ma
Lumber, the
Molasses, th
Oatmeal or
in weight
Pork, the b
Salt, the to
Shingles, th
Spirits—
Brandy, C
its, not
exceed
Hydro
greater
quantit
Rum, n
Sykes'
any gr
Sugar, Lou
" Bas
" Un
Tea, the p
Timber, in
Tobacco, M
Tobacco S
Wines, in
All other Y
Clocks and
Wood,
Blubber
tures liv

NEWFOUNDLAND TARIFF OF DUTIES,

PAYABLE UNDER THE ACT PASSED IN THE LOCAL LEGISLATURE IN THE SESSION OF 1851.

		Articles.	Duty in Stg.		
		Apples, the barrel	0	1	6
		Bacon and Hams, the cwt.. . . .	0	5	0
£	s d	Beef, salted and cured, the barrel, not exceeding Two Hundred Pounds	0	2	0
64,524	7 0	Bread or Biscuit, the cwt	0	0	3
2,390	16 11	Butter, the cwt	0	2	0
1,197	1 6	Calves, Sheep, and Pigs, each	0	1	0
739	1 2	Cheese, the cwt	0	5	0
791	19 5	Cigars, the thousand	0	5	0
800	0 0	Cocoa, the cwt	0	5	0
5,200	0 0	Coffee, the cwt...	0	5	0
7,008	14 8	Coals, the ton...	0	1	0
82,652	0 8	Flour, the barrel, not exceeding in weight 196lbs	0	1	6
		Horses, Mares, and Geldings, each	0	10	0
		Lumber, the 1000 feet, one inch thick	0	2	6
		Molasses, the gallon...	0	0	1 1/2
		Oatmeal or Indian Meal, the barrel, not exceeding in weight Two Hundred Pounds.. . . .	0	0	6
		Pork, the barrel, not exceeding in weight 200lbs..	0	3	0
		Salt, the ton	0	0	6
		Shingles, the thousand	0	1	0
		Spirits—			
		Brandy, Gin, Whiskey, Cordials, and other Spirits, not herein defined or enumerated, and not exceeding the strength of proof by Sykes's Hydrometer, and so in proportion for any greater strength, and for any greater or less quantity than a gallon, the gallon	0	3	0
		Rum, not exceeding the strength of proof by Sykes's Hydrometer, and so in proportion for any greater or less quantity than a gallon, the gal.	0	0	9
		Sugar, Loaf and Refined, the cwt...	0	7	6
		" Bustard, the cwt	0	5	0
		" Unrefined, the cwt.. . . .	0	5	0
		Tea, the pound	0	0	3
		Timber, including Balk and Scantling, the ton	0	1	6
		Tobacco, Manufactured and Leaf, the pound	0	0	2
		Tobacco Stems, the cwt....	0	2	0
		Wines, in bottles, the gallon	0	3	0
		All other Wines, the gallon	0	2	0
		Clocks and Watches, Furniture Manufactured of Wood, Ale, Porter, Beer, Cider, Perry, Oil, Blubber, Furs and Skins, the produce of Creatures living in the Sea, for every £100 of value	10	0	0
£	s d				
71,807	1 5				

TARIFF OF DUTIES, (Continued.)

Articles.	Duty in Stg.		
	7	10	0
Candles of all kinds, for every £100 of value	7	10	0
Goods, Wares, and Merchandize, not otherwise enumerated, described, or charged with Duty in this Act, and not otherwise exempt from Duty, and Neat Cattle, for every £100 of the value.	5	0	0

EXEMPTIONS.

Printed Books, Pamphlets, Maps and Charts, Coin and Bullion, Hemp, Flax and Tow, Lime and Lime-stone, Manure of all kinds, Provisions of every description imported or supplied for Her Majesty's Land or Sea Forces, Passengers' Personal Luggage, Rice Feed. Refuse of Rice, Seed of all kinds intended to be used for agricultural purposes, Vegetables of all sorts, fresh, Mules and Asses, and Fish, fresh or salted, dried or pickled.

LENGTH OF SESSIONS

OF THE GENERAL ASSEMBLY OF NEWFOUNDLAND.

Year	From	To	Days in Session.	Remarks.
1833	Jun. 1	July 9	240	Includes an adjournment of 38 days, from May 30th to July 9.
	July 12	August 1		
1834	January 29	June 12	161	
	August 26	Sept. 20		
1835	January 8	May 12	115	
1836	January 7	May 6	111	
1837	July 3	Novem. 18	139	
1838	June 20	August 13	122	
	August 20	October 25		
1839	May 17	October 12	149	
1840	January 3	April 29	118	
1841	January 2	April 26	116	
1842	Nil.			
1843	January 17	May 22	126	
1844	January 10	April 29	111	
1845	January 15	April 23	99	
1846	January 15	April 28	104	
Do. Special.	June 16	August 4	50	Met in consequence of the city of St John's having been destroy'd by fire
1846	Decem 1	January 14	44	9 Acts passed.
1847				
1848				
1849	Decem 14	April 23	130	22 Acts passed.
1850	January 28	April 30	93	19 Acts passed.
1851	January 23	May 31	129	15 Acts passed.

POPULATION, &c., OF THE SEVERAL MUNICIPAL DISTRICTS.

Average produce of

Acres

No.

No.

No.

RELIGION.

According to Census 1845

POPULATION, &c., OF THE SEVERAL FACTORIAL DISTRICTS.

DISTRICTS.	According to Censuses of 1845.		RELIGION.		No. of Dwelling Houses.	No. of Schools.	No. of Sealing Vessels.	No. of Fishing Boats.	Acres of Land in Cultivation.	Average produce of		Cattle.	Horses.												
	Males.	Females.	Increase per cent.	Churches.						Dissenters.	Meeting Houses.			Roman Catholics.	Chapels.	Potatoes.	Oats and other Grain.	Hay and Fodder.	Tons.						
St John's.....	13177	12119	33	9	1985	5	16	137845	137845	16	8	1283	21363	22	34	1369	1079	612	412	1003	48543	3436	4313	771	1307
Conception Bay.....	14899	13127	20	7	1985	5	16	137845	137845	16	8	1283	21363	22	34	1369	1079	612	412	1003	48543	3436	4313	771	1307
Trinity Bay.....	4689	4112	13	2	1985	5	16	137845	137845	16	8	1283	21363	22	34	1369	1079	612	412	1003	48543	3436	4313	771	1307
Bonavista Bay..	3943	3284	30	4	1985	5	16	137845	137845	16	8	1283	21363	22	34	1369	1079	612	412	1003	48543	3436	4313	771	1307
Fogo.....	3771	2973	38	8	1985	5	16	137845	137845	16	8	1283	21363	22	34	1369	1079	612	412	1003	48543	3436	4313	771	1307
*Ferryland.....	2623	1958		1	1985	5	16	137845	137845	16	8	1283	21363	22	34	1369	1079	612	412	1003	48543	3436	4313	771	1307
Placencia and St Mary's.....	3578	2895	37	6	1985	5	16	137845	137845	16	8	1283	21363	22	34	1369	1079	612	412	1003	48543	3436	4313	771	1307
Burin.....	2485	1873	38	7	1985	5	16	137845	137845	16	8	1283	21363	22	34	1369	1079	612	412	1003	48543	3436	4313	771	1307
Fortune Bay...	3109	1991	60	3	1985	5	16	137845	137845	16	8	1283	21363	22	34	1369	1079	612	412	1003	48543	3436	4313	771	1307

The average increase of the whole population of the Island, since 1836, is rather more than 30 per cent.

*In this District there is a decrease of 10 per cent.

C.
d.)
Duty in Stg.
7 10 0
5 0 0
in and Bullion,
Manure of all
or supplied for
Personal Lug-
s intended to
all sorts, fresh,
ed or pickled.

DLAND.
Remarks.

des an adjourn-
f 38 days, from
th to July 9.
n consequence of
of St John's hav-
destroy'd by fire
s passed.
cts passed.
cts passed.
cts passed.

COMPARATIVE STATEMENT

OF THE QUANTITY AND VALUE OF THE STAPLE ARTICLES OF PRODUCE EXPORTED IN THE YEARS 1840, '41, '42, '43, '44, '45, '47, '48, '49 and '50.

Years.	Dried Fish. Quintals.	Oils. Gallons.	Seal Skins. No.	Salmon. Tierces.	Herrings Barrels.	
Quantity.	1840	915,795	3,206,583	631,385	3,396	14,686
	1841	1,009,725	2,673,574	417,115	3,642	9,965
	1842	1,007,980	2,262,031	344,683	4,715	13,839
	1843	936,202	3,111,312	651,370	4,058	9,649
	1844	852,162	3,605,868	685,530	3,753	13,410
	1845	1,000,333	2,219,301	352,202	3,545	20,903
	1847	837,973	2,224,233	436,831	4,917	9,908
	1848	920,366	2,610,820	521,004	3,822	13,872
	1849	1,175,167	2,282,496	306,072	5,911	11,471
	1850	1,089,182	2,636,800	440,828	4,600	19,556
Value.	1840	£576,245	£305,197	£39,408	£12,939	£9,036
	1841	605,014	266,832	29,961	12,302	6,361
	1842	561,950	233,313	23,200	13,078	7,119
	1843	532,194	335,975	40,497	12,216	4,570
	1844	482,480	315,690	39,648	11,945	6,065
	1845	536,990	243,640	40,123	12,794	11,234
	1847	489,940	229,172	46,280	9,782	5,111
	1848	491,924	350,579	58,426	6,597	7,644
	1849	588,728	213,742	33,780	10,815	5,671
	1850	532,969	309,928	66,350	9,200	9,779

COMPARATIVE STATEMENT

OF THE COLONIAL REVENUE AND EXPENDITURE IN THE YEARS 1848, 1849 AND 1850.

	1848.	1849.	1850.
Imperial Customs Duties	£5783 17 6	£3583 5 8	
Colonial Duties.....	48154 4 2	52776 2 6	£59381 19 0
Light Dues.....	1627 18 9	1693 7 9	2,390 16 11
From other sources	2934 17 6	11332 9 2	5,142 8 0
Totals.....	58500 17 11	69405 5 1	66,915 3 11
Expenditure.....	62711 18 7	66262 2 1	71,807 1 5

VALUE of IMPORTS and EXPORTS in '47, '48, '49 & '50.

	1847	1848	1849	1850
Imports.....	£843,409	£769,628	£770,190	£867,316
Exports.....	806,605	887,581	876,567	975,770

OUTFIT

St John's.
Harbour G.
Spaniard's
Carbonear
Brigus, Cu
Grave, C
Trinity an
New Perli
Harbour
Greenspon
Bay Bull
and Re

No....
Tons..

On 31st
On 31st
On 31st

QUEEN
Prince
Prince
Princes
Princes
Prince
Princes
Prince
Duche
Duche
Duche
King
Grand
Prince

OUTFIT FOR THE SEAL FISHERY IN 1850 AND 1851.

	1850			1851		
	Ves.	Tons.	Men.	Ves.	Tons.	Men.
St John's.....	71	6728	2574	92	9200	3480
Harbour Grace.....	55	5032	1959	64	5949	2398
Spaniard's Bay, &c. . .	5	439	192	5	439	192
Carbonear.....	35	3305	1210	34	3408	1226
Brigus, Cupids, Port de Grave, &c.....	57	5309	2019
Trinity and Catalina..	27	2303	865	30	2573	999
New Perlican & Hants Harbour.....	12	1067	430	11	927	367
Greenspond, &c.....	24	1707	689	23	1740	696
Bay Bulls, Aquaforte and Renew's.....	7

SHIPS BUILT IN THE COLONY.

	1843	1844	1845	1846	1847	1848	1849	1850
No....	24	25	32	31	17	19	30	30
Tons..	1192	1281	1607	1723	854	794	1055	1497

Ships Owned and Registered in the Colony.

On 31st December, 1844.. 844	On 31st December, 1848... 954
On 31st December, 1845.. 907	On 31st December, 1849... 970
On 31st December, 1847.. 950	On 31st December, 1850... 1066

ROYAL FAMILY OF ENGLAND.

QUEEN VICTORIA born	May 24 1819
Prince Albert	August 26 1819
Prince of Wales	November 9 1841
Princess Royal	November 21 1840
Princess Alice Maude Mary	April 25 1843
Prince Alfred Ernest Albert	August 6 1844
Princess Helena Augusta	May 25 1846
Princess Louisa Carolina Alberta	March 18 1848
Prince Arthur Patrick Albert	May 1 1850
Duchess of Gloucester	April 25 1776
Duchess of Kent	August 17 1786
Duchess of Cambridge	July 24 1797
King of Hanover	May 27 1819
Grand Duchess of Mecklenburg-Strelitz	July 19 1822
Princess Mary of Cambridge	November 27 1833

ICLES OF PRO-
'44, '45, '47,

ton.	Herrings
ves.	Barrels.
96	14,686
42	9,965
15	13,839
58	9,649
53	13,410
45	20,903
17	9,908
22	13,872
11	11,471
00	19,556
939	£9,036
302	6,361
078	7,119
216	4,570
945	6,065
794	11,234
782	5,111
597	7,644
815	5,671
200	9,779

YEARS 1848,

1850.

£59381	19	0
2,390	16	11
5,142	8	0
66,915	3	11
1,807	1	5

'49 & '50,

1850

£867,316
975,770

HER MAJESTY'S MINISTERS.

First Lord of the Treasury,	Right Hon Lord John Russell
Lord Chancellor	Lord Truro
Chancellor of the Exchequer	Right Hon Sir C Wood, Bart.
President of the Council	Marquis of Lansdowne
Privy Seal	Earl of Minto
Secretary of State, Home	Sir George Grey, Bart.
" " Foreign	Viscount Palmerston
" " Colonies	Earl Grey
First Lord of the Admiralty	Right Hon. Sir F T Baring, Bart.
President of Board of Control	Sir John Cam Hobhouse, Bart.
President of Board of Trade	Right Hon Henry Labouchere
First Commissioner of Woods &c.	Lord Seymour
Postmaster General	Marquis of Clanricarde
Chancellor of Duchy of Lancaster	Earl of Carlisle

(The above form the Cabinet.)

Field Marshal Com. of Forces	Duke of Wellington
Master Gen. of the Ordnance	Marquis of Anglesey
Vice President of the Board of } Trade and Paymaster Gen. }	Earl Granville
Secretary at War	Right Hon Fox Maule
Lord Steward of the Household	Earl of Fortescue
Earl Marshal and Master of Horse	Duke of Norfolk
Governor General of India	Marquis of Dalhousie
Secretary of the Admiralty	H G Ward, Esq
Joint Secretaries of Treasury	{ Henry Tufnell, Esq John Parker, Esq H Waddington, Esq G C Lewis, Esq, MP Lord Stanley of Alderley H Unwin Addington, Esq Frederick Peel, Esq Herman Merivale, Esq
Home Under Secretaries	
Foreign ditto	
Colonial ditto	
Attorney General	Sir A E Cockburn
Solicitor General	Sir William P Wood
Judge Advocate General	Right Hon W G Hayter
Lord Advocate of Scotland	Right Hon — Moncrieff

LAW COURTS.

Chancery—High Chancellor	Lord Truro
Queen's Bench—Chief Justice	Right Hon Lord Campbell
Common Pleas—Chief Justice	Right Hon Sir John Jarvis
Exchequer—Chief Baron	Right Hon Sir Frederick Pollock
Admiralty—Judge	Right Hon S Lushington, LLD

IRELAND.

Lord Lieutenant of Ireland	Earl of Clarendon
Lord Chancellor	Right Hon M Brady
Secretary of Ireland	Right Hon S W Somerville, Bart
Attorney General	J Hatchell, Esq
Solicitor General	— Hughes, Esq.

FIRE
Lomb

For Insur

Matthias A
Decimus B
Octavius E
William C
William D
George A
Emanuel G
Henry Gr
Joseph Ow
Kirkman D
Thomas H

John I

Was esta
upon prin
The ex
manifeste
which all
Company
Person
stricted f
ble to ma
Offices.
The s
unlimite
of the C

PHENIX FIRE ASSURANCE COMPANY

Lombard Street and Charing Cross, London,

ESTABLISHED IN 1782.

*For Insuring every kind of Property in every part of the
World, from Loss or Damage by Fire.*

Trustees and Directors.

Sir Robert Harry Inglis, Bart., M.P., D.C.L.

Matthias Attwood, Esq	James Horne, Esq
Decimus Burton, Esq	John Dorien Magens, Esq
Octavius Edward Coope, Esq	John Masterman, Esq, M.P.
William Cotton, Esq	John Petty Muspratt, Esq
William Davis, Esq	Richard Price, Esq
George Arthur Fuller, Esq	George Stanley Repton, Esq
Emanuel Goodhart, Esq	Benjamin Shaw, Esq
Henry Grace, Esq	Charles Hampden Turner, Esq
Joseph Owen Harris, Esq	Matthew Whiting, Esq
Kirkman Daniel Hodgson, Esq	Thomas Wilson, Esq
Thomas Hodgson, Esq	

Assistant Director—Thomas Ritcher, Esq.

Auditors.

John Davis, Esq | John Hodgson, Esq
James Alexander Gordon, Esq.

Secretaries— { Wilmer Harris, Esq
George William Lovell, Esq.

Architect and Surveyor—John Shaw, Esq.

THE PHENIX OFFICE

Was established by a numerous Proprietary in January, 1782.
upon principles of public utility.

The experience of nearly three-quarters of a century has
manifested to the public the promptitude and liberality with
which all losses have been adjusted by the *Phœnix Assurance
Company*, to the extent of upwards of *Six Millions Sterling*.

Persons insured by this Company do not depend upon re-
stricted funds for the payment of their claims, nor are they li-
able to make good the losses of others, as is the case in many
Offices.

The security afforded to the Public by the *Phœnix Office* is
unlimited, comprising, in addition to the large invested capital
of the Company, the whole fortunes of a numerous Proprieta-

See next page

ry, comprised of some of the most opulent gentlemen and merchants in the Kingdom.

Rates of Premium, which have lately been considerably reduced, and all particulars of Insurance, may be had on application to the undersigned, who also issue Policies on the spot (by which a saving of the Stamp Duty, chargeable on all Policies issued in England, is effected) free of any charge; and any orders or communications addressed to them will be as punctually attended to as at the Company's Offices in London.

W. & G. Rendell,
Agents for Newfoundland.

THE COLONIAL LIFE ASSURANCE COMPANY

*Registered and Empowered under Act of Parliament, 7 and 8
Victoria, Cap. 110.*

CAPITAL—£500,000.

GOVERNOR.

The Rt Hon the Earl of Elgin and Kincardine, Gov.-Gen. of Canada

LONDON—4 A LOTHBURY.

EDINBURGH, 1 GEORGE-ST. GLASGOW, 35 ST VINCENT PLACE

Board of Directors in Edinburgh.

GEORGE MOIR, Esq., Chairman.

George Mercer, Esq
James M Melville, Esq
Peter Ramsay, Esq
George Patton, Esq
James Duncan, Esq
Archibald Horne, Esq

Henry David Hill, Esq
James Hay, Esq
Alexander J Russell, Esq
William Stuart Walker, Esq
John Robert Tod, Esq

*Medical Adviser—Henry Marshall, Esq.
Actuary—William Thomas Thomson, Esq
Secretary—Henry Jones Williams, Esq
Auditor—Charles Pearson, Esq*

Board of Directors in London.

THE RIGHT HON. THE EARL OF MINTO, Chairman.
Alexander Gillespie, Esq | David Laing Burn, Esq
Thos Houldsworth Brooking, Esq | Alexander MacGregor, Esq
John Scott, Esq

*Medical Adviser—Dr John W Woodfall
Secretary—Sydney Crocker, Esq*

See next page

Mungo C
William E
Alexander
Medi
Secre

George T

Medi
Agen

THE

Has been
lonies of
Assuranc
to perso
Compan
liament ?

The g
rection o
with, an
stitutions
ford all t
are com

For t
Compan
Boards r
places to

THE
Director
and thos
milar in

THE
been fo
to tho v
have ex

THE
divided
sion be
particip
ed for
which t
ticular

ntlemen and
siderably re-
had on appli-
es on the spot
ple on all Po-
any charge;
them will be
y's Offices in

dell,
Newfoundland.

MPANY
ment, 7 and 8

Gen. of Canada

CENT PLACE

, Esq
ell, Esq
Walker, Esq
Esq

, Chairman.
, Esq
regor, Esq

ext page

Board of Directors in Glasgow

Mungo Campbell, Junr, Esq | George Gillespie, Esq
William Eccles, Esq | Malcolm M'Cauley, Esq
Alexander Glasgow, Esq | Donald Smith, Esq
Medical Adviser—Dr A D Anderson.
Secretary—William Hunter, Esq

Board of Directors in Newfoundland.

Head Office—St. John's.
George T Brooking, Esq | Lawrence O'Brien, Esq
Walter Grievs, Esq
Medical Adviser—Henry Hunt Stabb, M.D
Agent—George T Brooking.

THE COLONIAL LIFE ASSURANCE COMPANY

Has been established for the purpose of extending to the Colonies of Great Britain, and to India, the full benefit of Life Assurance; and for the purpose of giving increased facilities to persons visiting or residing in Foreign Countries. The Company is registered and empowered under the Act of Parliament 7 and 8 Vict., cap. 110.

The general management of the Company is under the direction of persons who have been long practically acquainted with, and connected with the working of Life Assurance Institutions; and it has been the study of the Directors to afford all those advantages to their Policy-holders abroad which are commanded by Assurers in this country.

For the purpose of giving increased facilities also in the Company's transactions, the Directors have formed Local Boards of Management, and Branch Offices, where Assurances may be effected and Premiums paid, in the different places to which they have extended their business.

THE CAPITAL of the Company is £500,000. All the Directors in Great Britain are Shareholders of the Company, and those appointed in the Colonies are bound to take a similar interest in the Institution.

THE RATES which the Company have adopted, have been formed on the most correct observations which exist as to the value of life in those countries to which the Company have extended their business.

THE PROFITS of the Company will be ascertained and divided at certain intervals: the First Investigation and Division being to be in 1854, when each Policy having a right to participate in the Profits, will share in the Fund to be allocated for Division among the Assured, according to the Profits which the Company may calculate to have arisen on the particular class of Risks to which such Policy may belong.

See next page

Every information can be obtained at the Offices of the Company.

By order of the Directors,

WILLIAM THOS. THOMSON, Actuary

HENRY J. WILLIAMS, Secretary.

George T. Brooking,

Agent for Newfoundland

ALLIANCE
BRITISH AND FOREIGN
LIFE AND FIRE ASSURANCE COMPANY

BARTHOLOMEW LANE, LONDON.

Established by Act of Parliament.

CAPITAL, FIVE MILLIONS STERLING.

Board of Direction.

Samuel Gurney, Esq

| Sir Moses Montefiore, F R S

Directors.

James Alexander, Junr, Esq

James P Howard, Esq

G H Barnett, Esq

John Irving, Esq

Sir E N Buxton, Bart

Louis Lucas, Esq

Sir R Campbell, Bart

Thomas Masterman, Esq

Benjamin Cohen, Esq

Thomas Richardson, Esq

Edward Fletcher, Esq

Lionel N DeRothschild, Esq

Charles Gibbes, Esq

Oswald Smith, Esq

William Glaston, Esq

H M Thornton, Esq

Auditors—Sir George Carroll, Samuel Gurney, Jr., Esq, Andrew Johnston, Esq

Bankers—Messrs Barnett, Hoares & Co

Actuary—Benjamin Gompertz, Esq, F R S

Secretary—Andrew Hamilton, Esq

Physician—John R Hume, M D, Curzon Street

Solicitor—John M Pearce, Esq

Surveyor—Thomas Allason, Esq

ESTABLISHED MARCH, 1824.

Persons effecting insurances with the *Alliance Company* enjoy the following important advantages :—

I.—*Perfect Security.*—The large Capital and nearly One Thousand Shareholders composing the Company, render the Security presented to the public undoubted.

See next page

II—Mo
Premiums
found low
respectab
The Pr
which are
nies.

III—P
and Fire.
every Fiv
rate of th
the incre
the Assu
propositio

The F
Assured,
of Five Y
which ha

IV—P
not there
of the Co

V—L

The u
appointe
they are
INSUR
means a

ROY

J

J Ca

C

II—*Moderate Premiums of Assurance.*—The Rates of the Premiums of Assurance for the greater part of *Life*, will be found lower than those in use in many of the older and most respectable offices.

The Premiums of Assurance on *Fire* are the same as those which are demanded by the first class of Assurance Companies.

III—*Participation of Profits by the Assured both in Life and Fire.*—The profits of the Life Department, appropriated every Five Years, are applied either to the reduction of the rate of the future Premium to be paid on the policy or to the increase of assured on the Life, as is most agreeable to the Assured; the party to make his choice at the time the proposition for Assurance is made.

The *Profits* of the *Fire* Department appropriated to the Assured, are distributed at the close of each successive period of Five Years, in the form of a per centage on the Premiums which have been paid.

IV—Parties who obtain a settlement of losses by *Fire* are not thereby deprived of their right to participate in the profits of the Company.

V—Losses by *Lightning* are made good.

The undersigned beg leave to announce, that having been appointed Agents for Newfoundland to the above Company, they are prepared to receive proposals for *FIRE* and *LIFE INSURANCE*, and to issue Policies on the spot, by which means a saving of the stamp duty on Policies will be effected.

Brooking & Son.

THE
ROYAL INSURANCE COMPANY
OF LIVERPOOL.

CAPITAL---TWO MILLIONS STG.

Trustees.

J Shaw Leigh, Esq., and R B B H Blundell, Esq.

Directors, &c.

Charles Turner, Esq., *Chairman.*

J Campbell, Esq., and J Bramley-Moore, Esq., *Deputy Chairmen*

See next page

George Armstrong, Esq
 Ralph Brocklebank, Esq
 Michael Bousfield, Esq
 David Cannon, Esq
 William Claxton, Esq
 Thomas Dover, Esq
 Richard Harbord, Esq
 Robert E Harvey, Esq
 R Brodhurst Hill, Esq
 Thos Dyson Hornby, Esq
 John Charles Jack, Esq

Edward Johnston, Esq
 Rodger Lyon Jones, Esq
 James Lawrence, Esq
 Francis Maxwell, Esq
 George Maxwell, Esq
 Robert M'Andrew, Esq
 Edmond Molyneux, Esq
 Henry Moore, Esq
 William Smith, Esq
 John Toor, Esq

Manager and Actuary—Percy M Dove.

FIRE INSURANCE on Property of all kinds in Newfoundland effected at the lowest rates consistent with safety. This Company has every desire to establish as reasonable a rate of charge as circumstances will admit. Attention is invited to the present scale of Premiums, which will be found fully as favourable to the Assured as that of any Office of known standing.

Prompt settlement of Claims.
 No charge for Policies.

LIFE INSURANCE, with large participation of Profits—extensive travelling leave—a portion of the premiums may remain on credit—and other advantages.

Detailed Prospectuses may be had on application to

Brocklebank & Anthony,

Agents for Newfoundland

NATIONAL LOAN FUND
LIFE ASSURANCE SOCIETY,
 OF LONDON.

Capital, Five Hundred Thousand Pounds Sterling
SURPLUS—£82,000 STERLING.

A PROTECTION FOR THE WIDOW AND ORPHAN

BOARD OF LOCAL DIRECTORS FOR NEWFOUNDLAND.

H W Hoyles, Esq, Chairman.

Hon James Crowdy,

Hon C F Bennett

Hon Joseph Noad,

N Stabb Esq

Medical Examiner—Samuel Carson, M D

Solicitor—F B T Carter, Esq.

The following are some of the advantages offered by this Society :—

See next page

Moderate
 Loans of
 no further
 Fifty per
 ever requir
 Divisions
 cash, added
 annual prem
 Proposal
 Boards wit
 Blank F
 may be ob
 Prowse's a

Equ

CA

Bo

Hon I
 John

Standin

Parties

will be en

incurring

Propo

on Build

Farming

received

Prowse'

N.B.—

FIR

S

Moderate Rates of Premium.

Loans of Half the Premiums for whole term of life with no further security than endorsement thereof on the Policy.

Fifty per cent of the Premiums paid in, advanced whenever required.

Divisions of profits made to Policy-holders, paid either in cash, added to the Policy, or allowed in future reductions of annual premiums—at the option of the Assured.

Proposals accepted, and policies granted by the Local Boards without referring to the London Office.

Blank Forms, Tables of Rates, &c., and other information, may be obtained on application at the Agent's Office, in Mr. Prowse's stone building, Duckworth-street.

E. L. JARVIS, Agent.

Equitable Fire Insurance Company
OF LONDON.

CAPITAL—£500,000 STERLING.

Board of Local Directors for Newfoundland.

James J Grieve, Esq. Chairman.

Hon L O'Brien

Robert Prowse, Esq

John Kent, Esq

William M Barnes, Esq

Standing Counsel—Hon E M Archibald, Attorney General.

Parties insured in this Office for three consecutive years, will be entitled to participate in one-half of the profits without incurring liability.

Proposals for Insurance against Loss or Damage by Fire on Buildings, Household Furniture, Goods, Stock in Trade, Farming and Agricultural Stocks, Ships, Barges, &c., will be received at the Agent's Office, adjoining Dr. Carson's, in Mr. Prowse's Stone Building, Duckworth street.

E. L. JARVIS, Agent.

N.B.—No charge for Policies executed in this Colony.

THE LIVERPOOL AND LONDON
FIRE AND LIFE INSURANCE COMPANY

Established in 1836.

Capital—Two Millions Sterling.

Trustees :

Sir Thomas Brancker, Adam Hodgson, Esquire,
William Potter, Esquire.

See next page.

Directors in Liverpool;

CHAIRMAN—William Earle, Esquire. **DEPUTY CHAIRMEN**—
William Dixon, Esquire; William Nicol, Esquire.

Thomas Booth, Esq.
Wm. Brown, Esq., M.P.
Thomas A. Bushley, Esq.
Joseph C. Ewart, Esq.
T. Stewart Gladstone, Esq.
George Grant, Esq.
Francis Haywood, Esq.
George Holt, Esq.
Joseph Hornley, Esq.

G. H. Laurence, Esq.
Harold Littledale, Esq.
Andrew Low, Esq.
William Lowe, Esq.
John Marriott, Esq.
James Moon, Esq.
Lewin Mozley, Esq.
John Pennington, Esq.
H. Stolterfoht, Esq.

SECRETARY—Swinton Boult, Esq.

The above Company offer to effect Insurances on Property in Newfoundland against Fire, on the most moderate terms. The long and high standing of the "*Liverpool and London Insurance Company*," their well known liberality in the settlement of claims for loss, the large amount of their capital, and the character of the Directors and Proprietors offer advantages rarely met with to persons who wish to protect their Property against Fire.

Further particulars will be made known on application to the Agents, who are prepared to issue Policies free of charge.

BOWRING, BROTHERS, Agents.

HENRY W. SEYMOUR

Has for Sale,

AT HIS ESTABLISHMENT
(OPPOSITE QUEEN STREET.)

An excellent and varied assortment of every article in the
GROCERY AND PROVISION LINE,
WHICH WILL BE DISPOSED OF AT THE LOWEST
POSSIBLE PRICES.

Public attention is invited to his



TEA STOCK



Which only needs a trial to be appreciated.

FRESH GROUND COFFEE EVERY MORNING.

THE S
assort

Manufact
fitted up t
found in l

Coats' Ke
Tea Di
Round T
Tea Pots
Tea Can
Coffee P
Oil Lam
Iron Ha
Tin Ligu
Tin Sca
Tin Cha
Tin Dut
Tin Dri
Waterin
Chambe
Measur
Sheet I

Perac
stock.
Any
GAL
made t
the lar

Iced,
COM

WI

THE
MORNING COURIER,

PRINTED AND PUBLISHED BY

JOSEPH WOODS,

*At his Office, Corner of Gower and Prescott Streets,
Every Wednesday and Saturday morning.*

EVERY DESCRIPTION OF

BOOK & JOB PRINTING

*Neatly executed at the shortest notice the nature of the work will
admit of, viz:—*

ANNUAL AND SPECIAL REPORTS,

SOCIETIES' CONSTITUTIONS AND BYE LAWS,

SERMONS,

PAPERS,

FISH, OIL, AND CASH RECEIPT BOOKS, ORDER BOOKS

Business, Invitation, and other Cards,

POWERS OF ATTORNEY, DECLARATIONS,

BILLS OF LADING, BILLS OF EXCHANGE,

AND ALL KINDS OF

Law and Commercial Blanks,

CIRCULARS, CATALOGUES, NOTICES,

BILL HEADS,

TABULAR AND RULE WORK

OF EVERY VARIETY.

Posting and Hand Bills, &c.

ER,

streets,

e work will

LAWS,

ER BOOKS

ards,

ONS,

ANGE,

CES,

OLK,

EWELM

