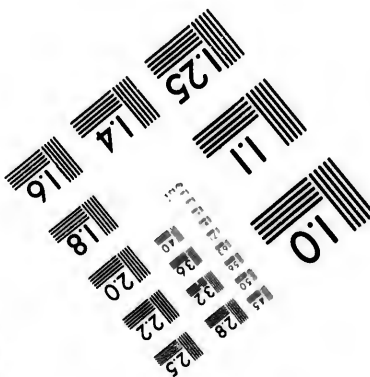
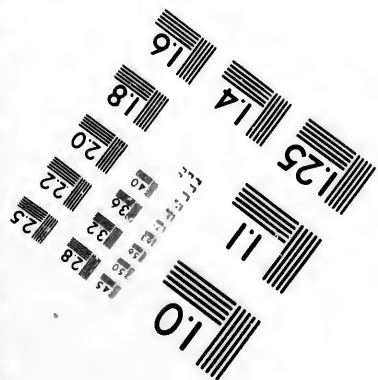
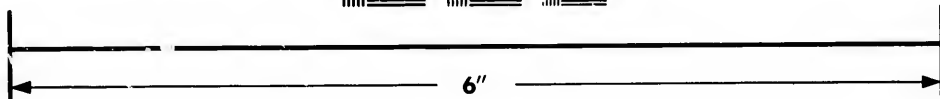
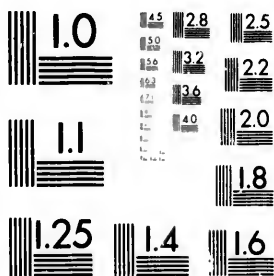


**IMAGE EVALUATION  
TEST TARGET (MT-3)**



**Photographic  
Sciences  
Corporation**

23 WEST MAIN STREET  
WEBSTER, N.Y. 14580  
(716) 872-4503

28  
32  
22  
20

**CIHM/ICMH  
Microfiche  
Series.**

**CIHM/ICMH  
Collection de  
microfiches.**

10



Canadian Institute for Historical Microreproductions

Institut canadien de microreproductions historiques

**1980**

Technical and Bibliographic Notes/Notes techniques et bibliographiques

The Institute has attempted to obtain the best original copy available for filming. Features of this copy which may be bibliographically unique, which may alter any of the images in the reproduction, or which may significantly change the usual method of filming, are checked below.

L'Institut a microfilmé le meilleur exemplaire qu'il lui a été possible de se procurer. Les détails de cet exemplaire qui sont peut-être uniques du point de vue bibliographique, qui peuvent modifier une image reproduite, ou qui peuvent exiger une modification dans la méthode normale de filmage sont indiqués ci-dessous.

- Coloured covers/  
Couverture de couleur
- Covers damaged/  
Couverture endommagée
- Covers restored and/or laminated/  
Couverture restaurée et/ou pelliculée
- Cover title missing/  
Le titre de couverture manque
- Coloured maps/  
Cartes géographiques en couleur
- Coloured ink (i.e. other than blue or black)/  
Encre de couleur (i.e. autre que bleue ou noire)
- Coloured plates and/or illustrations/  
Planches et/ou illustrations en couleur
- Bound with other material/  
Relié avec d'autres documents
- Tight binding may cause shadows or distortion  
along interior margin/  
La reliure serrée peut causer de l'ombre ou de la  
distortion le long de la marge intérieure
- Blank leaves added during restoration may  
appear within the text. Whenever possible, these  
have been omitted from filming/  
Il se peut que certaines pages blanches ajoutées  
lors d'une restauration apparaissent dans le texte,  
mais, lorsque cela était possible, ces pages n'ont  
pas été filmées.
- Additional comments:/  
Commentaires supplémentaires:

- Coloured pages/  
Pages de couleur
- Pages damaged/  
Pages endommagées
- Pages restored and/or laminated/  
Pages restaurées et/ou pelliculées
- Pages discoloured, stained or foxed/  
Pages décolorées, tachetées ou piquées
- Pages detached/  
Pages détachées
- Showthrough/  
Transparence
- Quality of print varies/  
Qualité inégale de l'impression
- Includes supplementary material/  
Comprend du matériel supplémentaire
- Only edition available/  
Seule édition disponible
- Pages wholly or partially obscured by errata  
slips, tissues, etc., have been refilmed to  
ensure the best possible image/  
Les pages totalement ou partiellement  
obscurcies par un feuillet d'errata, une pelure,  
etc., ont été filmées à nouveau de façon à  
obtenir la meilleure image possible.

This item is filmed at the reduction ratio checked below/  
Ce document est filmé au taux de réduction indiqué ci-dessous.

|                          |                          |                          |                          |                          |                          |                          |                                     |                          |                          |                          |                          |
|--------------------------|--------------------------|--------------------------|--------------------------|--------------------------|--------------------------|--------------------------|-------------------------------------|--------------------------|--------------------------|--------------------------|--------------------------|
| 10X                      | 12X                      | 14X                      | 16X                      | 18X                      | 20X                      | 22X                      | 24X                                 | 26X                      | 28X                      | 30X                      | 32X                      |
| <input type="checkbox"/> | <input type="checkbox"/> | <input type="checkbox"/> | <input type="checkbox"/> | <input type="checkbox"/> | <input type="checkbox"/> | <input type="checkbox"/> | <input checked="" type="checkbox"/> | <input type="checkbox"/> | <input type="checkbox"/> | <input type="checkbox"/> | <input type="checkbox"/> |

The copy filmed here has been reproduced thanks to the generosity of:

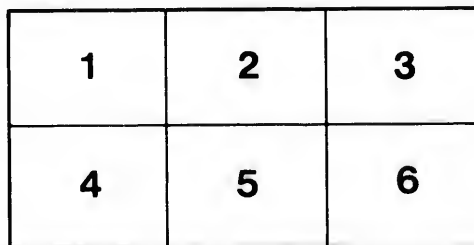
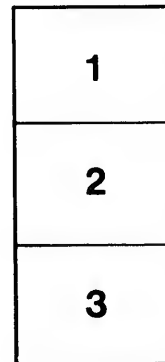
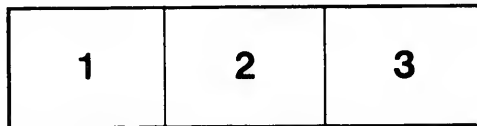
The Nova Scotia  
Legislative Library

The images appearing here are the best quality possible considering the condition and legibility of the original copy and in keeping with the filming contract specifications.

Original copies in printed paper covers are filmed beginning with the front cover and ending on the last page with a printed or illustrated impression, or the back cover when appropriate. All other original copies are filmed beginning on the first page with a printed or illustrated impression, and ending on the last page with a printed or illustrated impression.

The last recorded frame on each microfiche shall contain the symbol  $\rightarrow$  (meaning "CONTINUED"), or the symbol  $\nabla$  (meaning "END"), whichever applies.

Maps, plates, charts, etc., may be filmed at different reduction ratios. Those too large to be entirely included in one exposure are filmed beginning in the upper left hand corner, left to right and top to bottom, as many frames as required. The following diagrams illustrate the method:



L'exemplaire filmé fut reproduit grâce à la générosité de:

The Nova Scotia  
Legislative Library

Les images suivantes ont été reproduites avec le plus grand soin, compte tenu de la condition et de la netteté de l'exemplaire filmé, et en conformité avec les conditions du contrat de filmage.

Les exemplaires originaux dont la couverture en papier est imprimée sont filmés en commençant par le premier plat et en terminant soit par la dernière page qui comporte une empreinte d'impression ou d'illustration, soit par le second plat, selon le cas. Tous les autres exemplaires originaux sont filmés en commençant par la première page qui comporte une empreinte d'impression ou d'illustration et en terminant par la dernière page qui comporte une telle empreinte.

Un des symboles suivants apparaîtra sur la dernière image de chaque microfiche, selon le cas: le symbole  $\rightarrow$  signifie "A SUIVRE", le symbole  $\nabla$  signifie "FIN".

Les cartes, planches, tableaux, etc., peuvent être filmés à des taux de réduction différents. Lorsque le document est trop grand pour être reproduit en un seul cliché, il est filmé à partir de l'angle supérieur gauche, de gauche à droite, et de haut en bas, en prenant le nombre d'images nécessaire. Les diagrammes suivants illustrent la méthode.

ils  
du  
diffier  
ne  
age

rata  
o

elure,  
à

NOVA SCOTIA  
LEGISLATIVE LIBRARY



PROVINCE HOUSE

*ON SOME UNSOLVED PROBLEMS IN GEOLOGY.*

---

ADDRESS

OF

J. W. DAWSON, LL.D.

PRESIDENT

OF THE

American Association for the Advancement of Science.

---

DELIVERED AT THE

MINNEAPOLIS MEETING,

AUGUST, 1883.

---

SALEM PRESS:

1883.

NS

550.4

D

A

5  
PAMWA

*ON SOME UNSOLVED PROBLEMS IN GEOLOGY.*

---

ADDRESS

OF

J. W. DAWSON, LL.D.

PRESIDENT

OF THE

American Association for the Advancement of Science.

---

DELIVERED AT THE

MINNEAPOLIS MEETING,

AUGUST, 1883.

---

SALEM PRESS:

1883.



NS  
550.4  
D

LADIES

A

My  
that tw  
in pro  
take u  
with v  
A geo  
altern  
time.  
and c  
and is  
its w  
geogr  
physi  
least  
there  
of th  
be su

Pe  
rema  
met  
plac

2 216

5

## ADDRESS

BY

J. W. DAWSON, LL. D.,

THE RETIRING PRESIDENT OF THE ASSOCIATION.

---

*ON SOME UNSOLVED PROBLEMS IN GEOLOGY.*

---

LADIES AND GENTLEMEN OF THE AMERICAN ASSOCIATION FOR THE  
ADVANCEMENT OF SCIENCE:—

My predecessor in office remarked in the opening of his address that two courses are open to the retiring president of this Association in preparing the annual presidential discourse. He may either take up some topic relating to his own specialty, or he may deal with various or general matters relating to science and its progress. A geologist, however, is not necessarily tied up to one or the other alternative. His subject covers the whole history of the earth in time. At the beginning it allies itself with astronomy and physics and celestial chemistry. At the end it runs into human history and is mixed up with archaeology and anthropology. Throughout its whole course it has to deal with questions of meteorology, geography and biology. In short, there is no department of physical or biological science, with which geology is not allied, or at least on which the geologist may not presume to trespass. When, therefore, I announce as my subject on the present occasion some of the unsolved problems of this universal science, you need not be surprised if I should be somewhat discursive.

Perhaps I shall begin at the utmost limits of my subject by remarking that in matters of natural and physical science, we are met at the outset with the scarcely solved question as to our own place in the nature which we study, and the bearing of this on the

difficulties we encounter. The organism of man is decidedly a part of nature. We place ourselves, in this aspect, in the sub-kingdom vertebrata and class mammalia, and recognize the fact that man is the terminal link in a chain of being, extending throughout geological time. But the organism is not all of man, and when we regard man as a scientific animal, we raise a new question. If the human mind is a part of nature then it is subject to natural law, and nature includes mind as well as matter. On the other hand, without being absolute idealists we may hold that mind is more potent than matter, and nearer to the real essence of things. Our science is in any case necessarily dualistic, being the product of the reaction of mind on nature, and must be largely subjective and anthropomorphic. Hence, no doubt, arise much of the controversy of science and much of the unsolved difficulty. We recognize this when we divide science into that which is experimental or depends on apparatus, and that which is observational and classificatory — distinctions these which relate not so much to the objects of science as to our methods of pursuing them. This view also opens up to us the thought that the domain of science is practically boundless, for who can set limits to the action of mind on the universe or of the universe on mind. It follows that science must be limited on all sides by unsolved mysteries; and it will not serve any good purpose to meet these with clever guesses. If we so treat the enigmas of the sphinx nature, we shall surely be devoured. Nor, on the other hand, must we collapse into absolute despair and resign ourselves to the confession of inevitable ignorance. It becomes us rather boldly to confront the unsolved questions of nature, and to wrestle with their difficulties till we master such as we can, and cheerfully leave those we cannot overcome to be grappled with by our successors.

Fortunately, as a geologist, I do not need to invite your attention to those transcendental questions which relate to the ultimate constitution of matter, the nature of the ethereal medium filling space, the absolute difference or identity of chemical elements, the cause of gravitation, the conservation and dissipation of energy, the nature of life, or the primary origin of bioplasmic matter. I may take the much more humble role of an inquirer into the unsolved or partially solved problems which meet us in considering that short and imperfect record which geology studies in the rocky layers of the earth's crust, and which leads no farther back

than to the earth and geology of the system more necessary.

What this momentary way very simple the Low nation, of geologists' guesses in relation to mineral which a horrible tion the rock we aqueous quite a deposit fact that these ge by the been v nous. atmos to the On the or limit under For a been sion n coole throu

than to the time when a solid rind had already formed on the earth and was already covered with an ocean. This record of geology covers but a small part of the history of the earth and of the system to which it belongs, nor does it enter at all into the more recondite problems involved; still it forms, I believe, some necessary preparation at least to the comprehension of these.

What do we know of the oldest and most primitive rocks? At this moment the question may be answered in many and discordant ways; yet the leading elements of the answer may be given very simply. The oldest rock formation known to geologists is the Lower Laurentian, the fundamental gneiss, the Lewisian formation of Scotland, the Ottawa gneiss of Canada. This formation, of enormous thickness, corresponds to what the older geologists called the fundamental granite, a name not to be scouted, for gneiss is only a stratified granite. Perhaps the main fact in relation to this old rock is that it is a gneiss, that is, a rock at once bedded and crystalline, and having for its dominant ingredient the mineral orthoclase, a compound of silica, alumina and potash, in which are embedded, as in a paste, grains and crystals of quartz and hornblende. We know very well from its texture and composition that it cannot be a product of mere heat, and being a bedded rock we infer that it was laid down layer by layer in the manner of aqueous deposits. On the other hand, its chemical composition is quite different from that of the muds, sands and gravels usually deposited from water. Their special characters are caused by the fact that they have resulted from the slow decay of rocks like these gneisses, under the operation of carbonic acid and water, whereby the alkaline matter and the more soluble part of the silica have been washed away, leaving a residue mainly silicious and aluminous. Such more modern rocks tell of dry land subjected to atmospheric decay and rain-wash. If they have any direct relation to the old gneisses they are their grandchildren, not their parents. On the contrary, the oldest gneisses show no pebbles or sand or limestone — nothing to indicate that there was then any land undergoing atmospheric waste, or shores with sand and gravel. For all that we know to the contrary, these old gneisses may have been deposited in a shoreless sea, holding in solution or suspension merely what it could derive from a submerged crust recently cooled from a state of fusion, still thin, and exuding here and there through its fissures heated waters and volcanic products.

It is scarcely necessary to say that I have no confidence in the supposition of unlike composition of the earth's mass on different sides on which Dana has partly based his theory of the origin of continents. The most probable conception seems to be that of Lyell, namely, a molten mass, uniform except in so far as denser material might exist toward its centre, and a crust at first approximately even and homogeneous, and subsequently thrown into great bendings upward and downward. This question has recently been ably discussed by Mr. Crosby in the *London Geological Magazine*.<sup>1</sup>

In short, the fundamental gneiss of the Lower Laurentian may have been the first rock ever formed; and in any case it is a rock formed under conditions which have not since recurred except locally. It constitutes the first and best example of these chemico-physical, aqueous or aqueo-igneous rocks, so characteristic of the earliest period of the earth's history. Viewed in this way the Lower Laurentian gneiss is probably the oldest kind of rock we shall ever know — the limit to our backward progress, beyond which there remains nothing to the geologist except physical hypotheses respecting a cooling incandescent globe. For the chemical conditions of these primitive rocks, and what is known as to their probable origin, I must refer you to my friend Dr. Sterry Hunt, to whom we owe so much of what is known of the older crystalline rocks<sup>2</sup> as well as of their literature, and the questions which they raise. My purpose here is to sketch the remarkable difference which we meet as we ascend into the Middle and Upper Laurentian.

In the next succeeding formation, the true Lower Laurentian of Logan, the Grenville series of Canada, we meet with a great and significant change. It is true we have still a predominance of gneisses which may have been formed in the same manner with those below them; but we find these now associated with great beds of limestone and dolomite, which must have been formed by the separation of calcium and magnesium carbonates from the sea water, either by chemical precipitation or by the agency of living beings. We have also quartzite, quartzose gneisses, and even pebble beds, which inform us of sand banks and shores. Nay, more, we have beds containing graphite which must be the residue of plants, and iron ores which tell of the deoxidation of iron

<sup>1</sup>June, 1883.

<sup>2</sup>Hunt, *Essays on Chemical Geology*.

oxide by  
new fact  
decay of  
life on t  
To affor  
been lif  
slow bu  
water,  
Its pot  
washed  
form ne  
had bee  
been th  
new ph  
and I p  
the wor  
era was

Was  
Should  
have of  
more c  
tian fo  
it else  
that in  
to sty  
quired  
period  
were t  
life in  
pletio  
forms  
Th  
what  
edly  
in t  
nate  
ston  
lime

\* 1  
read

oxide by organic matters. In short, here we have evidence of new factors in world-building, of land and ocean, of atmospheric decay of rocks, of deoxidizing processes carried on by vegetable life on the land and in the waters, of limestone-building in the sea. To afford material for such rocks, the old Ottawa gneiss must have been lifted up into continents and mountain masses. Under the slow but sure action of the carbonic dioxide dissolved in rain-water, its felspar had crumbled down in the course of ages. Its potash, soda, lime, magnesia and part of its silica had been washed into the sea, there to enter into new combinations and to form new deposits. The crumbling residue of fine clay and sand had been also washed down into the borders of the ocean, and had been there deposited in beds<sup>3</sup>. Thus the earth had entered into a new phase, which continues onward through the geological ages; and I place in your hands one key for unlocking the mystery of the world when I affirm that this great change took place, this new era was inaugurated in the midst of the Laurentian period.

Was not this time a fit period for the first appearance of life? Should we not expect it to appear, independently of the evidence we have of the fact? I do not propose to enter here into that evidence, more especially in the case of the one well characterized Laurentian fossil, *Eozoon Canadense*. I have already amply illustrated it elsewhere. I would merely say here that we should bear in mind that in this later half of the Lower Laurentian, or if we so choose to style it, Middle Laurentian period, we have the conditions required for life in the sea and on the land; and since in other periods we know that life was always present when its conditions were present, it is not unreasonable to look for the first traces of life in this formation, in which we find for the first time the completion of those physical arrangements which make life, in such forms of it as exist on our planet, possible.

This is also a proper place to say something of the doctrine of what is termed metamorphism. The Laurentian rocks are undoubtedly greatly changed from their original state, more especially in the matters of crystallization and the formation of disseminated minerals, by the action of heat and heated water. Sandstones have thus passed into quartzites, clays into slates and schists, limestones into marbles. So far, metamorphism is not a doubtful

<sup>3</sup> Dr. Hunt has now in preparation for the press an important paper on this subject, read before the National Academy of Sciences.

question; but when theories of metamorphism go so far as to suppose an actual change of one element for another, they go beyond the bounds of chemical credibility; yet such theories of metamorphism are often boldly advanced and made the basis of important conclusions. Dr. Hunt has happily given the name "metasomatosis" to this imaginary and impossible kind of metamorphism, which may be regarded as an extreme kind of evolution, akin to some of those forms of that theory employed with reference to life, but more easily detected and exposed. I would have it to be understood that, in speaking of the metamorphism of the older crystalline rocks, it is not to this metasomatosis that I refer, and that I hold that rocks which have been produced out of the materials decomposed by atmospheric erosion can never by any process of metamorphism be restored to the precise condition of the Laurentian rocks. Thus there is in the older formations a genealogy of rocks, which, in the absence of fossils, may be used with some confidence, but which does not apply to the more modern deposits. Still nothing in geology absolutely perishes, or is altogether discontinued; and it is probable that, down to the present day, the causes which produced the old Laurentian gneiss may still operate in limited localities. Then, however, they were general not exceptional. It is further to be observed that the term gneiss is sometimes of wide and even loose application. Beside the typical orthoclase and hornblende gneiss of the Laurentian, there are micaceous, quartzose, garnetiferous and many other kinds of gneiss; and even gneissose rocks, which hold labradorite or anorthite instead of orthoclase, are sometimes, though not accurately, included in the term.

The Grenville series, or Middle Laurentian is succeeded by what Logan in Canada called the Upper Laurentian, and which other geologists have called the Norite or Norian series. Here we still have our old friends the gneisses, but somewhat peculiar in type, and associated with them are great beds, rich in lime-felspar, the so-called labradorite and anorthite rocks. The precise origin of these is uncertain, but this much seems clear, namely, that they originated in circumstances in which the great limestones deposited in the Lower or Middle Laurentian were beginning to be employed in the manufacture, probably by aqueo-igneous agencies, of lime-felspars. This proves the Norian rocks to be much younger than the Laurentian, and that, as Logan supposed, con-

siderable  
ing lapse

Next  
talline a  
elevation  
others.

pebbles  
must have  
sion  
and slat  
older ro  
previou  
former  
vastly c

Still  
called  
the Tac  
measur  
of these  
around  
it wou  
brian r  
I have  
studied  
nation  
of the  
ped  
Eozoic  
moder  
views

Aft  
that a  
By so  
refer  
ments  
series  
matic  
differ  
man

siderable earth movements had occurred between the two, implying lapse of time.

Next we have the Huronian of Logan, a series much less crystalline and more fragmentary, and affording more evidence of land elevation and atmospheric and aqueous erosion than any of the others. It has great conglomerates, some of them made up of rounded pebbles of Laurentian rocks, and others of quartz pebbles, which must have been the remains of rocks subjected to very perfect erosion. The pure quartz-rocks tell the same tale, while limestones and slates speak also of chemical separation of the materials of older rocks. The Taconian evidently tells of movements in the previous Laurentian, and changes in its texture so great, that the former may be regarded as a comparatively modern rock, though vastly older than any part of the Palaeozoic series.

Still later than the Huronian, is the great Micaceous series, called by Hunt the Mont Alban or White mountain group, and the Taconian or Lower Taconic of Emmons, which recalls in some measure the conditions of the Huronian. The precise relations of these to the later formations and to certain doubtful deposits around Lake Superior, can scarcely be said to be settled, though it would seem that they are all older than the fossiliferous Cambrian rocks, which practically constitute the base of the Palaeozoic. I have, I may say, satisfied myself, in regions which I have studied, of the existence and order of these rocks as successive formations, though I would not dogmatize as to the precise relations of those last mentioned, or as to the precise age of some disputed formations which may either be of the age of the older Eozoic formations or may be peculiar kinds of Palaeozoic rocks moulded by metamorphism. Probably neither of the extreme views now agitated is absolutely correct.

After what has been said, you will perhaps not be astonished that a great geological battle rages over the old crystalline rocks. By some geologists they are almost entirely explained away or referred to igneous action or to the alteration of ordinary sediments. Under the treatment of another school, they grow to great series of Pre-Cambrian rocks, constituting vast systems of formations, distinguishable from each other, not by fossils, but by differences of mineral character. I have already indicated the manner in which I believe the dispute will ultimately be settled,



and the President of the Geological Section will treat it more fully in his opening address.

After the solitary appearance of Eozoon in the Laurentian, and of a few uncertain forms in the Huronian and Taconian, we find ourselves, in the Cambrian, in the presence of a nearly complete invertebrate fauna of protozoa, polyps, echinoderms, mollusks and crustacea, and this not confined to one locality merely, but apparently extended simultaneously throughout the ocean. This sudden incoming of animal life, along with the subsequent introduction of successive groups of invertebrates, and finally of vertebrate animals, furnishes one of the greatest of the unsolved problems of geology, which geologists were wont to settle by the supposition of successive creations. In an address delivered at the Detroit meeting of the Association in 1875, I endeavored to set forth the facts as to this succession, and the general principles involved in it, and to show the insufficiency of the theories of evolution suggested by biologists to give any substantial aid to the geologist in these questions. In looking again at the points there set forth, I find they have not been invalidated by subsequent discoveries, and that we are still nearly in the same position with respect to these great questions that we were in at that time,—a singular proof of the impotency of that deductive method of reasoning which has become fashionable among naturalists of late. Yet the discussions of recent years have thrown some additional light on these matters, and none more so than the mild disclaimers with which my friend Dr. Asa Gray and other moderate and scientific evolutionists have met the extreme views of such men as Romanes, Haeckel, Lubbock and Grant Allen. It may be useful to note some of these, as shedding a little light on this dark corner of our unsolved problems.

It has been urged on the side of rational evolution that this hypothesis does not profess to give an explanation of the absolute origin of life on our planet, or even of the original organization of a single cell or of a simple mass of protoplasm, living or dead. All experimental attempts to produce by synthesis the complex albuminous substances or to obtain the living from the non-living, have so far been fruitless, and indeed we cannot imagine any process by which such changes could be effected. That they have been effected we know, but the process employed by their maker is

still as m  
words:—  
How was  
implied  
mind no  
forms of  
But if  
made—  
—How  
illusion  
ral law,  
and tha  
duced t  
mere ch  
have ea  
some la  
caused  
organis  
tendenc  
its per  
or less  
account  
out ge  
in a t  
explain  
deney  
move v  
then th  
actual  
change  
treme  
Observ  
such a  
more c  
variet  
If 3.6  
things  
ele.  
and o

eat it more  
entian, and  
an, we find  
complete in-  
ollusks and  
but appar-  
This sud-  
ntroduction  
tebrate an-  
problems of  
supposition  
the Detroit  
et forth the  
involved in  
olution sug-  
geologist in  
e set forth,  
discoveries,  
respect to  
—a singular  
of reasoning  
e. Yet the  
ual light on  
timers with  
nd scientific  
n as Roma-  
seful to note  
rner of our  
on that this  
he absolute  
rganization  
ng or dead.  
ne complex  
non-living,  
ne any pro-  
they have  
eir maker is

still as mysterious to us as it probably was to him who wrote the words:—"And God said let the waters swarm with swarmer." How vast is the gap in our knowledge and our practical power implied in this admission, which must however be made by every mind not absolutely blinded by a superstitious belief in those forms of words which too often pass current as philosophy.

But if we are content to start with a number of organisms ready made—a somewhat humiliating start however—we still have to ask—How do these vary so as to give new species? It is a singular illusion in this matter, of men who profess to be believers in natural law, that variation may be boundless, aimless and fortuitous, and that it is by spontaneous selection from varieties thus produced that development arises. But surely the supposition of mere chance and magic is unworthy of science. Varieties must have causes, and their causes and their effects must be regulated by some law or laws. Now it is easy to see that they cannot be caused by a mere innate tendency in the organism itself. Every organism is so nicely equilibrated that it has no such spontaneous tendency, except within the limits set by its growth and the law of its periodical changes. There may, however, be equilibrium more or less stable. I believe all attempts hitherto made have failed to account for the fixity of certain, nay of very many, types throughout geological time, but the mere consideration that one may be in a more stable state of equilibrium than another, so far explains it. A rocking stone has no more spontaneous tendency to move than an ordinary boulder, but it may be made to move with a touch. So it probably is with organisms. But if so, then the causes of variation are external, as in many cases we actually know them to be, and they must depend on instability or change in surroundings, and this so arranged as not to be too extreme in amount and to operate in some determinate direction. Observe how remarkable the unity of the adjustments involved in such a supposition! how superior they must be to our rude and always more or less unsuccessful attempts to produce and carry forward varieties and races in definite directions! This cannot be chance. If it exists it must depend on plans deeply laid in the nature of things, else it would be most monstrous magic and causeless miracle. Still more certain is this conclusion when we consider the vast and orderly succession made known to us by geology, and which

must have been regulated by fixed laws, only a few of which are as yet known to us.

Beyond these general considerations, we have others of a more special character, based on palaeontological facts, which show how imperfect are our attempts as yet to reach the true causes of the introduction of genera and species.

One is the remarkable fixity of the leading types of living beings in geological time. If, instead of framing, like Hæckel, fanciful phylogenies, we take the trouble with Barrande and Caudry, to trace the forms of life through the period of their existence, each along its own line, we shall be greatly struck with this, and especially with the continuous existence of many low types of life through vicissitudes of physical conditions of the most stupendous character, and over a lapse of time scarcely conceivable. What is still more remarkable is that this holds in groups which, within certain limits, are perhaps the most variable of all. In the present world, no creatures are individually more variable than the protozoa; as, for example, the foraminifera and the sponges. Yet these groups are fundamentally the same, from the beginning of the Palaeozoic until now, and modern species seem scarcely at all to differ from specimens procured from rocks at least half-way back to the beginning of our geological record. If we suppose that the present sponges and foraminifera are the descendants of those of the Silurian period, we can affirm that in all that vast lapse of time, they have on the whole made little greater change than that which may be observed in variable forms at present. The same remark applies to other low animal forms. In forms somewhat higher and less variable, this is equally noteworthy. The pattern of the venation of the wings of cockroaches, and the structure and form of land snails, gally-worms and decapod crustaceans were all settled in the Carboniferous age, in a way that still remains. So were the foliage and the fructification of club-mosses and ferns. If, at any time, members of these groups branched off, so as to lay the foundation of new species, this must have been a very rare and exceptional occurrence and one demanding even some suspension of the ordinary laws of nature.

Certain recent utterances of eminent scientific men in England and France, are most instructive with reference to the difficulties

which en  
English  
bridge,  
alternat  
"constri  
rials an  
"evolut  
by the  
compar  
conclud  
which h  
these a  
reprodi  
success  
of them  
or on t  
the two  
yet bec  
tion as  
show t  
under  
evoluti  
only th  
charac  
arisen-  
menta  
tions s  
gymn  
presen  
that t  
their  
weigh  
the n  
mals.  
At  
the  
is, "  
The  
"W  
11

which encompass this subject. Huxley, at present the leader of English evolutionists, in his "Rede Lecture"<sup>4</sup> delivered at Cambridge, England, holds that there are only two "possible alternative hypotheses" as to the origin of species—(1) that of "construction" or the mechanical putting together of the materials and parts of each new species separately; and (2) that of "evolution," or that one form of life "proceeded from another" by the "establishment of small successive differences." After comparing these modes, much to the disadvantage of the first, he concludes with the statement that "this was his case for evolution, which he rested wholly on arguments of the kind he had adduced"—these arguments being the threadbare false analogy of ordinary reproduction and the transformation of species, and the mere succession of forms more or less similar in geological time, neither of them having any bearing whatever on the origin of any species or on the cause of the observed succession. With reference to the two alternatives, while it is true that no certain evidence has yet been obtained either by experiment observation or sound induction as to the mode of origin of any species, enough is known to show that there are numerous possible methods, grouped usually under the heads of absolute creation, mediate creation, critical evolution and gradual evolution. It is also true that almost the only thing we certainly know in the matter is that the differences characteristic of classes, orders, genera and species must have arisen, not in one or two, but in many ways. An instructive commentary on the capacity of our age to deal with these great questions is afforded by the fact that this little piece of clever mental gymnastic should have been practised in a university lecture and in presence of an educated audience. It is also deserving of notice that though the lecturer takes the development of the *Nautili* and their allies as his principal illustration, he evidently attaches no weight to the argument in the opposite sense deduced by Barrande, the man of all others most profoundly acquainted with these animals, from the Palaeozoic cephalopods.

Another example is afforded by a lecture recently delivered at the Royal Institution in London by Prof. Flower.<sup>5</sup> The subject is, "The Whales, past and present, and their probable origin." The latter point, as is well known, Caudry had candidly given up. "We have questioned," he says, "these strange and gigantic sov-

<sup>4</sup> Report in "Nature," June 21, corrected by the author.      <sup>5</sup> Reported in "Nature."

creigns of the Tertiary oceans as to their ancestors,—they leave us without reply." Flower is bold enough to face this problem, and he does so in a fair and vigorous way, though limiting himself to the supposition of slow and gradual change. He gives up at once, as every anatomist must, the idea of an origin from fishes or reptiles. He thinks the ancestors of the whales must have been quadrupedal mammals. He is obliged for good reasons to reject the seals and the otters, and turns to the ungulates, though here also the difficulties are formidable. Finally, he has recourse to an imaginary ancestor, supposed to have haunted marshes and rivers of the Mesozoic age, and to have been intermediate between a hippopotamus and a dolphin, and omnivorous in diet. As this animal is altogether unknown to geology or zoology, and not much less difficult to account for than the whales themselves, he very properly adds: "Please to recollect, however, that this is a mere speculation." He trusts, however, that such speculations are "not without their use;" but this will depend upon whether or not they lead men's minds from the path of legitimate science into the quicksands of baseless conjecture.

Gaudry, in his recent work, "Enchainements du Monde Animal,"<sup>16</sup> though a strong advocate of evolution, is obliged in his final resumé to say: "Il ne laisse point percer le mystère qui entoure le développement primitif des grandes classes du monde animal. Nul homme ne sait comment ont été formés les premiers individus de foraminifères, de polypes, d'étoiles de mer, de crinoides, etc. Les fossiles primaires ne nous ont pas encore fourni de preuves positives du passage des animaux d'une classe à ceux d'une autre classe."

Prof. Williamson, of Manchester, in an address delivered in February last before the Royal Institution of Great Britain, after showing that the conifers, ferns and lycopods of the Palæozoic have no known ancestry, uses the significant words: "The time has not yet arrived for the appointment of a botanical king-at-arms and constructor of pedigrees."

Another caution which a palæontologist has occasion to give with regard to theories of life, has reference to the tendency of biologists to infer that animals and plants were introduced under embryonic forms, and at first in few and imperfect species. Facts do not substantiate this. The first appearance of leading types

<sup>16</sup>Paris, 1883.

of life is rarely embryonic. On the contrary, they often appear in highly perfect and specialized forms, often however of composite type and expressing characters afterwards so separated as to belong to higher groups. The trilobites of the Cambrian are some of them of few segments and so far embryonic, but the greater part are many-segmented and very complex. The batrachians of the Carboniferous present many characters higher than those of their modern successors and now appropriated to the true reptiles. The reptiles of the Permian and Trias usurped some of the prerogatives of the mammals. The ferns, lycopods and equisetums of the Devonian and Carboniferous were, to say the least, not inferior to their modern representatives. The shell-bearing cephalopods of the Paleozoic would seem to have possessed structures now special to a higher group, that of the cuttle-fishes. The bald and contemptuous negation of these facts by Hæckel and other biologists does not tend to give geologists much confidence in their dicta.

Again, we are now prepared to say that the struggle for existence, however plausible as a theory, when put before us in connection with the productiveness of animals and the few survivors of their multitudinous progeny, has not been the determining cause of the introduction of new species. The periods of rapid introduction of new forms of marine life were not periods of struggle but of expansion—those periods in which the submergence of continents afforded new and large space for their extension and comfortable subsistence. In like manner, it was continental emergence that afforded the opportunity for the introduction of land animals and plants. Further, in connection with this, it is now an established conclusion that the great aggressive faunas and floras of the continents have originated in the north, some of them within the arctic circle, and this in periods of exceptional warmth, when the perpetual summer sunshine of the arctic regions coëxisted with a warm temperature. The testimony of the rocks thus is that not struggle but expansion furnished the requisite conditions for new forms of life, and that the periods of struggle were characterized by depauperation and extinction.

But we are sometimes told that organisms are merely mechanical, and that the discussions respecting their origin have no significance any more than if they related to rocks or crystals, because they relate merely to the organism considered as a machine, and

not to that which may be supposed to be more important, namely, the great determining power of mind and will. That this is a mere evasion by which we really gain nothing, will appear from a characteristic extract of an article by an eminent biologist in the new edition of the *Encyclopedia Britannica*, a publication which, I am sorry to say, instead of its proper role as a repertory of facts, has become a strong partisan, stating extreme and unproved speculations as if they were conclusions of science. The statement referred to is as follows: "A mass of living protoplasm is simply a molecular machine of great complexity, the total results of the working of which or its vital phenomena depend on the one hand on its construction and on the other on the energy supplied to it; and to speak of vitality as anything but the name for a series of operations is as if one should talk of the horology of a clock." It would I think scarcely be possible to put into the same number of words a greater amount of unscientific assumption and unproved statement than in this sentence. Is "living protoplasm" different in any way from dead protoplasm, and if so, what causes the difference? What is a "machine?" Can we conceive of a self-produced or uncaused machine, or one not intended to work out some definite results? The results of the machine in question are said to be "vital phenomena," certainly most wonderful results, and greater than those of any machine man has yet been able to construct. But why "vital?" If there is no such thing as life, surely they are merely physical results. Can mechanical causes produce other than physical effects? To Aristotle, life was "the cause of form in organisms." Is not this quite as likely to be true as the converse proposition? If the vital phenomena depend on the "construction" of the machine, and the "energy supplied to it," whence this construction and whence this energy? The illustration of the clock does not help us to answer this question. The construction of the clock depends on its maker, and its energy is derived from the hand that winds it up. If we can think of a clock which no one has made and which no one winds, a clock constructed by chance, set in harmony with the universe by chance, wound up periodically by chance, we shall then have an idea parallel to that of an organism living yet without any vital energy or creative law, but in such a case we should certainly have to assume some antecedent cause, whether we call it "horology" or by some other name. Perhaps the term evolution would serve

as well  
nothing  
not prev  
There  
the geol  
inability  
In this  
the reco  
generall  
of being  
show th  
as in th  
appear  
over wi  
repente  
to estab  
ception  
others  
special  
The  
by the  
period  
elevati  
concer  
forms  
period  
viation  
very r  
nifero  
amic  
and r  
detail  
expla  
that  
than  
Cont  
this  
He  
is re  
life.

as well as any other, were it not that common sense teaches that nothing can be spontaneously evolved out of that in which it did not previously exist.

There is one other unsolved problem in the study of life by the geologist to which it is still necessary to advert. This is the inability of paleontology to fill up the gaps in the chain of being. In this respect we are constantly taunted with the imperfection of the record; but facts show that this is much more complete than is generally supposed. Over long periods of time and many lines of being we have a nearly continuous chain, and if this does not show the tendency desired, the fault is as likely to be in the theory as in the record. On the other hand, the abrupt and simultaneous appearance of new types in many specific and generic forms and over wide and separate areas at one and the same time, is too often repeated to be accidental. Hence paleontologists in endeavoring to establish evolution, have been obliged to assume periods of exceptional activity in the introduction of species alternating with others of stagnation, a doctrine differing very little from that of special creation as held by the older geologists.

The attempt has lately been made to account for these breaks by the assumption that the geological record relates only to periods of submergence and gives no information as to those of elevation. This is manifestly untrue. In so far as marine life is concerned, the periods of submergence are those in which new forms abound for very obvious reasons already hinted; but the periods of new forms of land and fresh-water life are those of elevation, and these have their own records and monuments, often very rich and ample, as for example the swamps of the Carboniferous, the transition from the Cretaceous subsidence to the Laramie elevation, the Tertiary lake-basins of the west, the Terraces and raised beaches of the Pleistocene. Had I time to refer in detail to the breaks in the continuity of life which cannot be explained by the imperfection of the record, I could show at least that nature in this case does advance *per saltum* — by leaps, rather than by a slow continuous process. Many able reasoners, as Le Conte in this country, and Mivart and Collard in England, hold this view.

Here, as elsewhere, a vast amount of steady conscientious work is required to enable us to solve the problems of the history of life. But if so, the more the hope for the patient student and in-



investigator. I know nothing more chilling to research or unfavorable to progress than the promulgation of a dogmatic decision that there is nothing to be learned but a merely fortuitous and uncaused succession, amenable to no law, and only to be covered in order to hide its shapeless and uncertain proportions, by the mantle of bold and gratuitous hypothesis.

So soon as we find evidence of continents and oceans we raise the question, Have these continents existed from the first in their present position and form, or have the land and water changed places in the course of geological time? In reality both statements are true in a certain limited sense. On the one hand, any geological map whatever suffices to show that the general outline of the existing land began to be formed in the first and oldest crumplings of the crust. On the other hand, the greater part of the surface of the land consists of marine sediments which must have been derived from land that has perished in the process, while all the continental surfaces, except perhaps, some high peaks and ridges, have been many times submerged. Both of these apparently contradictory statements are true; and without assuming both it is impossible to explain the existing contours and reliefs of the surface.

In the case of North America, the form of the old nucleus of Laurentian rock in the north already marks out that of the finished continent, and the successive later formations have been laid upon the edges of this, like the successive loads of earth dumped over an embankment. But in order to give the great thickness of the Paleozoic sediments, the land must have been again and again submerged and for long periods of time. Thus, in one sense, the continents have been fixed; in another, they have been constantly fluctuating. Hall and Dana have well illustrated these points in so far as eastern North America is concerned. Prof. Hull of the Geological Survey of Ireland has recently had the boldness to reduce the fluctuations of land and water as evidenced in the British Islands to the form of a series of maps intended to show the physical geography of each successive period. The attempt is probably premature, and has been met with much adverse criticism; but there can be no doubt that it has an element of truth. When we attempt to calculate what could have been supplied from the old Eozoic nucleus by decay and aqueous erosion, and when we take into account the greater local thickness of sediments towards

the pres  
extensi  
But to  
lands n  
In po  
ous exi  
oldest,  
Oceani  
bed of  
someti  
times  
pecially  
rarely  
tary as  
Ever  
by the  
Atlant  
same t  
lines o  
ology  
these  
unders  
still a  
The  
the ca  
lands  
uneq  
gener  
of th  
the c  
ship  
this  
tions  
push  
nort  
land  
of i  
dist  
of t  
fart

the present sea-basins, we can scarcely avoid the conclusion that extensive areas once occupied by high land are now under the sea. But to ascertain the precise areas and position of these perished lands may now be impossible.

In point of fact we are obliged to believe in the contemporaneous existence in all geological periods, except perhaps the very oldest, of three sorts of areas on the surface of the earth: (1) Oceanic areas of deep sea, which must always have occupied the bed of the present ocean or parts of it; (2) Continental plateaus sometimes existing as low flats or as higher table-lands and sometimes submerged; (3) Areas of plication or folding, more especially along the borders of the oceans, forming elevated lands rarely submerged and constantly affording the material of sedimentary accumulations.

Every geologist knows the contention which has been occasioned by the attempts to correlate the earlier Palaeozoic deposits of the Atlantic margin of North America with those forming at the same time on the interior plateau, and with those of intervening lines of plication and igneous disturbance. Stratigraphy, lithology and fossils, are all more or less at fault in dealing with these questions, and while the general nature of the problem is understood by many geologists, its solution in particular cases is still a source of apparently endless debate.

The causes and mode of operation of the great movements of the earth's crust which have produced mountains, plains and table-lands, are still involved in some mystery. One patent cause is the unequal settling of the crust toward the centre; but it is not so generally understood as it should be, that the greater settlement of the ocean-bed has necessitated its pressure against the sides of the continents in the same manner that a huge ice-floe crushes a ship or a pier. The geological map of North America shows this at a glance, and impresses us with the fact that large portions of the earth's crust have not only been folded but bodily pushed back for great distances. On looking at the extreme north, we see that the great Laurentian mass of central Newfoundland has acted as a protecting pier to the space immediately west of it, and has caused the gulf of St. Lawrence to remain an undisturbed area since Palaeozoic times. Immediately to the south of this, Nova Scotia and New Brunswick are folded back. Still farther south, as Guyot has shown, the old sediments have been

crushed in sharp folds against the Adirondack mass, which has sheltered the table-land of the Catskills and of the great lakes. South of this again the rocks of Pennsylvania and Maryland have been driven back in a great curve to the west. Nothing, I think, can more forcibly show the enormous pressure to which the edges of the continents have been exposed, and at the same time the great sinking of the ocean-beds. Complex and difficult to calculate though these movements of plication are, they are more intelligible than the apparently regular pulsations of the flat continental areas, whereby they have alternately been below and above the waters, and which must have depended on somewhat regularly recurring causes, connected either with the secular cooling of the earth or with the gradual retardation of its rotation or with both. Throughout these changes, each successive elevation exposed the rocks for long ages to the decomposing influence of the atmosphere. Each submergence swept away and deposited as sediment the material accumulated by decay. Every change of elevation was accompanied with changes of climate, and with modifications of the habitats of animals and plants. Were it possible to restore accurately the physical geography of the earth in all these respects, for each geological period, the data for the solution of many difficult questions would be furnished.

It is an unfortunate circumstance that conclusions in geology arrived at by the most careful observation and induction do not remain undisturbed, but require constant vigilance to prevent them from being overthrown. Sometimes, of course, this arises from new discoveries throwing new light on old facts; but when this occurs it rarely works the complete subversion of previously received views. The more usual case is that some over zealous specialist suddenly discovers what seems to him to overturn all previous beliefs, and rushes into print with a new and plausible theory which at once carries with him a host of half informed people, but the insufficiency of which is speedily made manifest.

Had I written this address a few years ago, I might have referred to the mode of formation of coal as one of the things most surely settled and understood. The labors of many eminent geologists, microscopists and chemists in the old and the new worlds had shown that coal nearly always rests upon old soil surfaces penetrated with roots, and that coal-beds have in their roofs erect trees, the remains of the last forests that grew upon them. Logan and I

have ill  
success  
shown  
deposit  
that the  
whose  
in the  
subject  
that in  
bitume  
water;  
of epic  
carbon  
hence,  
that the  
the co  
of that  
many  
and A  
subjec  
slices  
cumst  
of the  
of the  
ately  
being  
of ma  
theory  
to des  
this v  
and f  
woul  
later  
emin  
in op  
my f  
he w  
revis  
had

have illustrated this in the case of the series of more than sixty successive coal beds exposed at the South Joggins, and have shown unequivocal evidence of land surfaces at the time of the deposition of the coal. Microscopical examination has proved that these coals are composed of the materials of the same trees whose roots are found in the underclays, and their stems and leaves in the roof shales; that much of the material of the coal has been subjected to subaërial decay at the time of its accumulation; and that in this, ordinary coal differs from bituminous and earthy bitumens and some kinds of cannel, which have been preserved under water; that the matter remaining as coal consists almost entirely of epidermal tissues, which being suberose in character are highly carbonaceous, very durable and impermeable by water,<sup>7</sup> and are, hence, the best fitted for the production of pure coal; and finally that the vegetation and the climatal and geographical features of the coal period were eminently fitted to produce in the vast swamps of that period, precisely the effects observed. All these points and many others have been thoroughly worked out for both European and American coal-fields, and seemed to leave no doubt on the subject. But several years ago certain microscopists observed on slices of coal layers filled with spore-cases, a not unusual circumstance, since these were shed in vast abundance by the trees of the coal forests, and because they contain suberose matter of the same character with epidermal tissues generally. Immediately we were informed that all coal consists of spores, and this being at once accepted by the unthinking, the results of the labors of many years are thrown aside in favor of this crude and partial theory. A little later, a German microscopist has thought proper to describe coal as made up of minute algae, and tries to reconcile this view with the appearances, devising at the same time a new and formidable nomenclature of generic and specific names, which would seem largely to represent mere fragments of tissues. Still later, some local facts in a French coal-field have induced an eminent botanist of that country to revive the drift theory of coal, in opposition to that of growth *in situ*. A year or two ago, when my friend Professor Williamson of Manchester, informed me that he was preparing a large series of slices of coal with the view of revising the whole subject, I was inclined to say that after what had been done by Lyell, Goepfert, Logan, Hunt, Newberry and

<sup>7</sup> *Acadian Geology*, third edition, supplement, p. 68.

myself, this was scarcely necessary; but in view of what I have just stated, it may be that all he can do will be required to rescue from total ruin the results of our labors.

An illustration of a different character is afforded by the controversy now raging with respect to the so-called fucoids of the ancient rocks. At one time the group of fucoids or algae constituted a general place of refuge for all sorts of unintelligible forms and markings; graptolites, worm-trails, crustacean tracks, shrinkage-cracks, and above all rill-markings forming a heterogeneous group of fucoidal remains distinguished by generic and specific names. To these were also added some true land plants, badly preserved or exhibiting structures not well understood by botanists. Such a group was sure to be eventually dismembered. The writer has himself done something toward this,<sup>8</sup> but Professor Nathorst has done still more,<sup>9</sup> and now some intelligible explanation can be given of many of these forms. Quite recently, however, the Count de Saporta, in an elaborate illustrated memoir<sup>10</sup> has come to the defence of the fucoids, more especially against the destructive experiments of Nathorst, and would carry back into the vegetable kingdom many things which would seem to be mere trails of animals. While writing this address, I have received from Professor Crié of Rennes, a paper in which he not only supports the algal nature of *Rusichnites*, *Arthrichnites* and many other supposed fucoids, but claims for the vegetable kingdom even *Receptaculites* and *Archaeocyathus*. It is not to be denied that some of the facts which he cites respecting the structure of the *Siphonia* and of certain modern encrusting *Alga* are very suggestive, though I cannot agree with his conclusions. My own experience has convinced me that, while non-botanical geologists are prone to mistake all kinds of markings for plants, even good botanists, when not familiar with the chemical and mechanical conditions of fossilization, and with the present phenomena of tidal shores, are quite as easily misled, though they are very prone on the other hand to regard land plants of some complexity, when badly preserved, as mere algae. In these circumstances it is very difficult to secure any consensus, and the truth is only to be found by careful observation of competent men.

<sup>7</sup> Footprints and Impressions on Carboniferous Rocks, *Am. Jour. of Science*, 1873.

<sup>8</sup> Royal Swedish Academy, Stockholm, 1881.

<sup>10</sup> *Apropos des Algues fossiles*, Paris, 1881.

One tr  
spised  
would

made d  
It w  
to that  
great  
suppos  
cuss th  
hosts  
hope o  
logica  
face o  
avoidi

No  
chang  
and t  
which  
has co  
prece  
vailo  
which  
frages  
These  
nectio  
eated  
of la  
and  
subsc  
one.  
other  
the s  
(1) t  
since  
cert  
(2)  
of t  
to b  
tren  
cau

One trouble is that these usually obscure markings have been despised by the greater number of palaeontologists, and probably would not now be so much in controversy were it not for the use made of them in illustrating supposed phylogenies of plants.

It would be wrong to close this address without some reference to that which is the veritable *pons asinorum* of the science, the great and much debated glacial period. I trust that you will not suppose that in the end of an hour's address, I am about to discuss this vexed question. Time would fail me even to name the hosts of recent authors who have contended in this arena. I can hope only to point out a few landmarks which may aid the geological adventurer in traversing the slippery and treacherous surface of the hypothetical ice-sheet of pleistocene times, and in avoiding the yawning crevasses by which it is traversed.

No conclusions of geology seem more certain than that great changes of climate have occurred in the course of geological time, and the evidence of this in that comparatively modern period which immediately preceded the human age is so striking that it has come to be known as preëminently the ice age; while in the preceding tertiary periods, temperate conditions seem to have prevailed even to the pole. Of the many theories as to these changes which have been proposed, two seem at present to divide the suffrages of geologists, either alone or combined with each other. These are (1) the theory of the precession of the equinoxes in connection with the varying eccentricity of the earth's orbit, advocated more especially by Croll; and (2) the different distribution of land and water as affecting the reception and radiation of heat and the ocean currents, a theory ably propounded by Lyell, and subsequently extensively adopted either alone or with the previous one. One of these views may be called the astronomical, the other the geographical. I confess that I am inclined to accept the second or Lyellian theory for such reasons as the following: (1) Great elevations and depressions of land have occurred in and since the Pleistocene, while the alleged astronomical changes are not certain, more especially in regard to their probable effect on the earth; (2) When the rival theories are tested by the present phenomena of the southern polar region and the North Atlantic, there seem to be geographical causes adequate to account for all except extreme and unproved glacial conditions; (3) The astronomical cause would suppose regularly recurring glacial periods of which

there is no evidence, and it would give to the latest glacial age an antiquity which seems at variance with all other facts; (4) In those more northern regions where glacial phenomena are most pronounced, the theory of floating sheets of ice, with local glaciers descending to the sea, seems to meet all the conditions of the case, and these would be obtained, in the North Atlantic at least, by very moderate changes of level, causing, for example, the equatorial current to flow into the Pacific, instead of running northward as a gulf stream; (5) The geographical theory allows the supposition not merely of vicissitudes of climate quickly following each other in unison with the movements of the surface, but allows also of that near local approximation of regions wholly covered with ice and snow and others comparatively temperate which we see at present in the north.

If, however, we are to adopt the geographical theory, we must avoid extreme views, and this leads to the inquiry as to the evidence to be found for any such universal or extreme glaciation as is demanded by some geologists.

The only large continental area in the northern hemisphere supposed to be entirely ice- and snow-clad is Greenland, and this so far as it goes is certainly a local case, for the ice and snow of Greenland extend to the south as far as 60° N. latitude, while both in Norway and in the interior of North America the climate in that latitude permits the growth of cereals. Further, Grinnel Land, which is separated from North Greenland only by a narrow sound, has a comparatively mild climate, and as Nares has shown is covered with verdure in summer. Still further, Nordenskiöld, one of the most experienced arctic explorers, holds that it is probable that the interior of Greenland is itself verdant in summer, and is at this moment preparing to attempt to reach this interior oasis. Nor is it difficult with the aid of the facts cited by Wœickoff and Whitney,<sup>11</sup> to perceive the cause of the exceptional condition of Greenland. To give ice and snow in large quantities, two conditions are required: first, atmospheric humidity, and, secondly, cold precipitating regions. Both of these conditions meet in Greenland. Its high coast ranges receive and condense the humidity from the sea on both sides of it and to the south. Hence the vast accumulation of its coast snow-fields, and the intense discharge of the glaciers emptying out of its valleys.

<sup>11</sup> Memoir on Glaciers, Geol. Soc'y, Berlin, 1881. Climatic Changes, Boston, 1883.

When  
that in  
far sou  
glaciers  
well as  
Antar  
only.  
contin  
as tha  
tain th  
questi  
must  
amount  
only b  
to col  
things  
and in  
tive p  
ern co  
action  
phen  
rained  
nents  
I c  
prese  
than  
tion  
moun  
its re  
sion:  
T  
rent  
is so  
pres  
wor  
tain  
leve  
Cre  
in s

When extreme glacialists point to Greenland and ask us to believe that in the glacial age the whole continent of North America as far south as the latitude of  $40^{\circ}$  was covered with a continental glacier, in some places several thousands of feet thick, we may well ask first what evidence there is that Greenland or even the Antarctic continent at present shows such a condition; and, secondly, whether there exists a possibility that the interior of a great continent could ever receive so large an amount of precipitation as that required. So far as present knowledge exists, it is certain that the meteorologist and the physicist must answer both questions in the negative. In short, perpetual snow and glaciers must be local and cannot be continental, because of the vast amount of evaporation and condensation required. These can only be possible where comparatively warm seas supply moisture to cold and elevated land, and this supply cannot in the nature of things penetrate far inland. The actual condition of interior Asia and interior America in the higher northern latitudes affords positive proof of this. In a state of partial submergence of our northern continents, we can readily imagine glaciation by the combined action of local glaciers and great ice-floes, but in whatever way the phenomena of the boulder clay and of the so-called terminal moraines are to be accounted for, the theory of a continuous continental glacier must be given up.

I cannot better indicate the general bearing of facts, as they present themselves to my mind in connection with this subject, than by referring to a paper by Dr. G. M. Dawson on the distribution of drift over the great Canadian plains, east of the Rocky mountains.<sup>12</sup> I am the more inclined to refer to this, because of its recency, and because I have so often repeated similar conclusions as to eastern Canada and the region of the Great Lakes.

The great interior plain of western Canada, between the Laurentian axis on the east and the Rocky mountains on the west, is seven hundred miles in breadth, and is covered with glacial drift presenting one of the greatest examples of this deposit in the world. Proceeding eastward from the base of the Rocky mountains, the surface, at first more than 4,000 feet above the sea level, descends by successive steps to 2,500 feet, and is based on Cretaceous and Laramie rocks, covered by boulder clay and sand, in some places from one hundred to two hundred feet in depth,

<sup>12</sup> Science, July 1, 1883.



and filling up preëxisting hollows, though itself sometimes piled into ridges. Near the Rocky mountains the bottom of the drift consists of gravel not glaciated. This extends to about one hundred miles east of the mountains, and must have been swept by water out of their valleys. The boulder clay resting on this deposit is largely made up of local debris, in so far as its paste is concerned. It contains many glaciated boulders and stones from the Laurentian region to the east, and also smaller pebbles from the Rocky mountains, so that at the time of its formation there must have been driftage of large stones for seven hundred miles or more from the east, and of smaller stones from a less distance on the west. The former kind of material extends to the base of the mountains, and to a height of more than 4,000 feet. One boulder is mentioned as being  $42 \times 40 \times 20$  feet in dimensions. The highest Laurentian boulders seen were at an elevation of 4,660 feet on the base of the Rocky mountains. The boulder clay when thick can be seen to be rudely stratified, and at one place includes beds of laminated clay with compressed peat, similar to the forest beds described by Worthen and Andrews in Illinois, and the so-called interglacial beds described by Hinde on Lake Ontario. The leaf beds on the Ottawa river and the drift trunks found in the boulder clay of Manitoba belong to the same category, and indicate that throughout the glacial period there were many forest oases far to the north. In the valleys of the Rocky mountains opening on these plains there are evidences of large local glaciers now extinct, and similar evidences exist on the Laurentian highlands on the east.

Perhaps the most remarkable feature of the region is that immense series of ridges of drift piled against an escarpment of Laramie and Cretaceous rocks, at an elevation of about 2,500 feet, and known as the "Missouri Coteau." It is in some places 30 miles broad and 180 feet in height above the plain at its foot, and extends north and south for a great distance; being in fact the northern extension of those great ridges of drift which have been traced south of the great lakes, and through Pennsylvania and New Jersey, and which figure on the geological maps as the edge of the continental glacier,—an explanation obviously inapplicable in those western regions where they attain their greatest development. It is plain that in the north it marks the western limit of the deep water of a glacial sea, which at some periods

extended much farther west, perhaps with a greater proportionate depression in going westward, and on which heavy ice from the Laurentian districts on the east was wafted southwestward by the arctic currents, while lighter ice from the Rocky Mountains was being borne eastward from these mountains by the prevailing westerly winds. We thus have in the west on a very wide scale the same phenomena of varying submergence, cold currents, great ice floes and local glaciers producing icebergs, to which I have attributed the boulder clay and upper boulder drift of eastern Canada.

A few subsidiary points I may be pardoned for mentioning here. The rival theories of the glacial period are often characterized as those of land glaciation and sea-borne icebergs. But it must be remembered that those who reject the idea of a continental glacier hold to the existence of local glaciers on the high lands, more or less extensive during different portions of the great Pleistocene submergence. They also believe in the extension of these glaciers seawards, and partly water-borne in the manner so well explained by Mattieu Williams, in the existence of those vast floes and fields of current- and tide-borne ice whose powers of transport and erosion we now know to be so great, and in a great submergence and reëlevation of the land bringing all parts of it and all elevations up to 5,000 feet successively under the influence of these various agencies, along with those of the ocean currents. They also hold that at the beginning of the glacial submergence, the land was deeply covered by decomposed rock, similar to that which still exists on the hills of the southern states, and which as Dr. Hunt has shown would afford not only earthy debris but large quantities of boulders ready for transportation by ice.

I would also remark that there has been the greatest possible exaggeration as to the erosive action of land ice. In 1865, after a visit to the Alpine glaciers, I maintained that in these mountains glaciers are relatively protective rather than erosive agencies, and that the detritus which the glacier streams deliver is derived mostly from the atmospherically wasted peaks and cliffs that project above them. Since that time many other observers have maintained like views, and very recently Mr. Davis of Cambridge and Mr. A. Irving have ably treated this subject.<sup>13</sup>

<sup>13</sup>Proceedings Boston Soc. Nat. Hist., XXII. Journal of Geological Society, February, 1883.

Smoothing and striation of rocks are undoubtedly important effects both of land-glaciers and heavy sea-borne ice, but the levelling and filling agency of these is much greater than the erosive. As a matter of fact, as Newberry, Hunt, Belt, Spencer and others have shown, the glacial age has dammed up vast numbers of old channels which it has been left for modern streams partially to excavate.

The till or boulder clay has been called a "ground moraine," but there are really no Alpine moraines at all corresponding to it. On the other hand, it is more or less stratified, often rests on soft materials which glaciers would have swept away, sometimes contains marine shells, or passes into marine clays in its horizontal extension, and invariably in its embedded boulders and its paste, shows an unoxidized condition, which could not have existed if it had been a subaërial deposit. When the Canadian till is excavated and exposed to the air, it assumes a brown color, owing to oxidation of its iron, and many of its stones and boulders break up and disintegrate under the action of air and frost. These are unequivocal signs of a subaqueous deposit. Here and there we find associated with it, and especially near the bottom and at the top, indications of powerful water action, as if of land torrents acting at particular elevations of the land, or heavy surf and ice action on coasts, and the attempts to explain these by glacial streams have been far from successful. A singular objection sometimes raised against the subaqueous origin of the till is its general want of marine remains; but this is by no means universal, and it is well known that coarse conglomerates of all ages are generally destitute of fossils, except in their pebbles, and it is further to be observed that the conditions of an ice-laden sea are not those most favorable for the extension of marine life, and that the period of time covered by the glacial age must have been short compared with that represented by some of the older formations.

This last consideration suggests a question which might afford scope for another address of an hour's duration,—the question how long time has elapsed since the close of the glacial period. Recently the opinion has been gaining ground that the close of the ice-age is very recent. Such reasons as the following lead to this conclusion. The amount of atmospheric decay of rocks and of denudation in general which have occurred since the close of the glacial period are scarcely appreciable. Little erosion of river valleys or of coast terraces has occurred. The calculated recess-

sion of waterfalls and of production of lake ridges lead to the same conclusion. So do the recent state of bones and shells in the Pleistocene deposits and the perfectly modern facies of their fossils. On such evidence the cessation of the glacial cold and settlement of our continents at their present levels are events which may have occurred not more than 6000 or 7000 years ago, though such time estimates are proverbially uncertain in geology. This subject also carries with it the greatest of all geological problems, next to that of the origin of life, namely, the origin and early history of man. Such questions cannot be discussed in the closing sentences of an hour's address. I shall only draw from them one practical inference. Since the comparatively short Post-glacial and recent periods apparently include the whole of human history, we are but new comers on the earth and therefore have had little opportunity to solve the great problems which it presents to us. But this is not all. Geology as a science scarcely dates from a century ago. We have reason for surprise in these circumstances, that it has learned so much, but for equal surprise that so many persons appear to think it a complete and full-grown science and that it is entitled to speak with confidence on all the great mysteries of the earth that have been hidden from the generations before us. Such being the newness of man and of his science of the earth, it is not too much to say that humility, hard work in collecting facts, and abstinence from hasty generalization should characterize geologists, at least for a few generations to come.

In conclusion, science is light, and light is good; but it must be carried high, else it will fail to enlighten the world. Let us strive to raise it high enough to shine over every obstruction which casts any shadow on the true interests of humanity. Above all, let us hold up the light and not stand in it ourselves.

