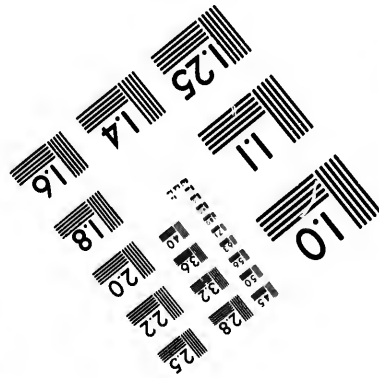
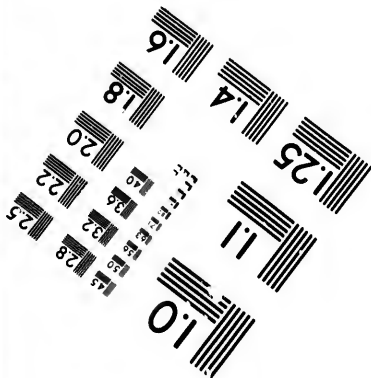
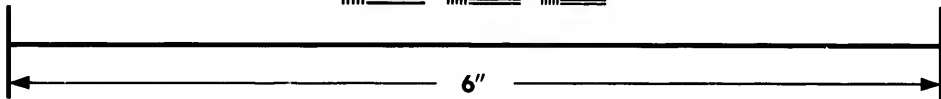
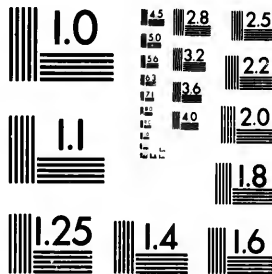


**IMAGE EVALUATION
TEST TARGET (MT-3)**



**Photographic
Sciences
Corporation**

23 WEST MAIN STREET
WEBSTER, N.Y. 14580
(716) 872-4503

15 28 25
32 22
20
8

**CIHM/ICMH
Microfiche
Series.**

**CIHM/ICMH
Collection de
microfiches.**



Canadian Institute for Historical Microreproductions / Institut canadien de microreproductions historiques

10

© 1987

Technical and Bibliographic Notes/Notes techniques et bibliographiques

The Institute has attempted to obtain the best original copy available for filming. Features of this copy which may be bibliographically unique, which may alter any of the images in the reproduction, or which may significantly change the usual method of filming, are checked below.

L'Institut a microfilmé le meilleur exemplaire qu'il lui a été possible de se procurer. Les détails de cet exemplaire qui sont peut-être uniques du point de vue bibliographique, qui peuvent modifier une image reproduite, ou qui peuvent exiger une modification dans la méthode normale de filmage sont indiqués ci-dessous.

- | | |
|--|--|
| <input type="checkbox"/> Coloured covers/ Couverture de couleur | <input type="checkbox"/> Coloured pages/ Pages de couleur |
| <input type="checkbox"/> Covers damaged/ Couverture endommagée | <input checked="" type="checkbox"/> Pages damaged/ Pages endommagées |
| <input type="checkbox"/> Covers restored and/or laminated/ Couverture restaurée et/ou pelliculée | <input checked="" type="checkbox"/> Pages restored and/or laminated/ Pages restaurées et/ou pelliculées |
| <input type="checkbox"/> Cover title missing/ Le titre de couverture manque | <input checked="" type="checkbox"/> Pages discoloured, stained or foxed/ Pages décolorées, tachetées ou piquées |
| <input type="checkbox"/> Coloured maps/ Cartes géographiques en couleur | <input checked="" type="checkbox"/> Pages detached/ Pages détachées |
| <input type="checkbox"/> Coloured ink (i.e. other than blue or black)/ Encre de couleur (i.e. autre que bleue ou noire) | <input type="checkbox"/> Showthrough/ Transparence |
| <input type="checkbox"/> Coloured plates and/or illustrations/ Planches et/ou illustrations en couleur | <input type="checkbox"/> Quality of print varies/ Qualité inégale de l'impression |
| <input type="checkbox"/> Bound with other material/ Relié avec d'autres documents | <input type="checkbox"/> Includes supplementary material/ Comprend du matériel supplémentaire |
| <input type="checkbox"/> Tight binding may cause shadows or distortion along interior margin/ La reliure serrée peut causer de l'ombre ou de la distorsion le long de la marge intérieure | <input type="checkbox"/> Only edition available/ Seule édition disponible |
| <input type="checkbox"/> Blank leaves added during restoration may appear within the text. Whenever possible, these have been omitted from filming/ Il se peut que certaines pages blanches ajoutées lors d'une restauration apparaissent dans le texte, mais, lorsque cela était possible, ces pages n'ont pas été filmées. | <input type="checkbox"/> Pages wholly or partially obscured by errata slips, tissues, etc., have been refilmed to ensure the best possible image/ Les pages totalement ou partiellement obscurcies par un feuillet d'errata, une pelure, etc., ont été filmées à nouveau de façon à obtenir la meilleure image possible. |
| <input checked="" type="checkbox"/> Additional comments: / Commentaires supplémentaires: | [Printed ephemera] 1 sheet (verso blank) |

This item is filmed at the reduction ratio checked below/
Ce document est filmé au taux de réduction indiqué ci-dessous.

| | | | | | |
|-----|-----|-----|-----|-----|-----|
| 10X | 14X | 18X | 22X | 26X | 30X |
| | | | | / | |
| 12X | 16X | 20X | 24X | 28X | 32X |

The copy filmed here has been reproduced thanks to the generosity of:

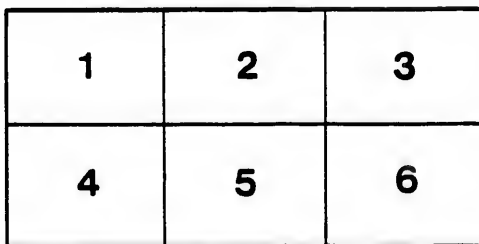
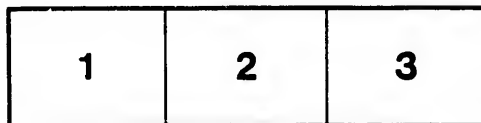
Manuscript Division
Public Archives of Canada

The images appearing here are the best quality possible considering the condition and legibility of the original copy and in keeping with the filming contract specifications.

Original copies in printed paper covers are filmed beginning with the front cover and ending on the last page with a printed or illustrated impression, or the back cover when appropriate. All other original copies are filmed beginning on the first page with a printed or illustrated impression, and ending on the last page with a printed or illustrated impression.

The last recorded frame on each microfiche shall contain the symbol \rightarrow (meaning "CONTINUED"), or the symbol ∇ (meaning "END"), whichever applies.

Maps, plates, charts, etc., may be filmed at different reduction ratios. Those too large to be entirely included in one exposure are filmed beginning in the upper left hand corner, left to right and top to bottom, as many frames as required. The following diagrams illustrate the method:



L'exemplaire filmé fut reproduit grâce à la générosité de:

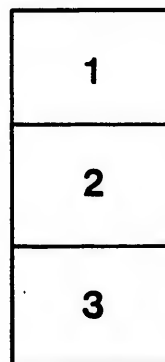
Division des manuscrits
Archives publiques du Canada

Les images suivantes ont été reproduites avec le plus grand soin, compte tenu de la condition et de la netteté de l'exemplaire filmé, et en conformité avec les conditions du contrat de filmage.

Les exemplaires originaux dont la couverture en papier est imprimée sont filmés en commençant par le premier plat et en terminant soit par la dernière page qui comporte une empreinte d'impression ou d'illustration, soit par le second plat, selon le cas. Tous les autres exemplaires originaux sont filmés en commençant par la première page qui comporte une empreinte d'impression ou d'illustration et en terminant par la dernière page qui comporte une telle empreinte.

Un des symboles suivants apparaîtra sur la dernière image de chaque microfiche, selon le cas: le symbole \rightarrow signifie "A SUIVRE", le symbole ∇ signifie "FIN".

Les cartes, planches, tableaux, etc., peuvent être filmés à des taux de réduction différents. Lorsque le document est trop grand pour être reproduit en un seul cliché, il est filmé à partir de l'angle supérieur gauche, de gauche à droite, et de haut en bas, en prenant le nombre d'images nécessaire. Les diagrammes suivants illustrent la méthode.



**To His Excellency Sir Peregrine Maitland, Knight
Commander of the Most Honorable Military Order
of the Bath, Lieutenant Governor of the Province
of Upper Canada, and Major General Commanding
His Majesty's Forces therein, &c. &c. &c.**

THE Petition of the under-named People of Color, residing in different parts of the Province, Humbly Sheweth, that your Petitioners duly appreciate the excellent constitution of the Province, and anxiously desire to enjoy more fully the many privileges it confers, and from which they are, in their present situation, in a great measure excluded. One of the many, and perhaps the greatest disadvantage under which they labor, is the want of means of educating their children—which desirable object they fondly cherish—the hopes of being able to accomplish, should they be formed into a settlement, where they could combine and unite their means and exertions for so laudable a purpose as that of securing to their posterity the means of obtaining a moral and religious education, with all its happy consequences; and your petitioners hope that it will be the means of preventing the system of kidnapping which is now carried on through His Majesty's Provinces by the Georgia and Virginia kidnappers, from the southern states of America; a recent instance of which your Petitioners beg leave to mention to your Excellency. In the month of April last, a black man by the name of James Smith, in the employ of Mr. R. M. Long, of Clinton, was seized in his bed, in the night, by a band of slave-holding ruffians from the south, and conveyed across the Niagara River, gagged and pinioned. He was kept concealed in some barrack while the Virginia kidnapper was making arrangements for proceeding onwards with his captive; but very fortunately the poor man made his escape, and after lying concealed for 48 hours without fire or food, actually swam the Niagara River in the night, and thus secured his retreat. The poor fellow landed at the fishing ground on this shore, and was first discovered by a party of fishermen, buffeting the chilly element nearly exhausted. He states that some of the party who seized him were disguised, and are supposed to be Canadians bribed for the disgraceful purpose. Last summer—1827—there was another poor man taken from this Province, by the Kentucky or Virginia kidnappers, and carried into slavery, which is a violation of the glorious laws of this province; and it is disgraceful to the free and independent state of New York, after riding herself from the curse of slavery, that kidnapping can be carried on from this province through her. Your Petitioners are of opinion, could they but unite themselves together into a township, it would prevent kidnapping, and we could become useful to our King and country. We know that His Majesty's Government have given us land on Lake Simcoe, but there are many disadvantages which prevent us from getting to that place: To mention them would be to make this petition too long. Your Petitioners therefore humbly pray, that your Excellency will be so graciously kind as to grant to your Petitioners—contiguous to the main road leading from Burlington to Lake Erie—a small portion of the waste lands of the Crown, as to your Excellency shall seem meet, on which to establish a settlement of Colored People, and your Petitioners as in duty bound will ever pray.

