

601/K/30/1-

MARITIME
MINING RECORD
 Dr. R. Bell
 Geol. survey dept.
 KIND
COAL AND METAL TRADES JOURNAL

*Cumberland. * Pictou. * Cape Breton. * Inverness*
 New Series Vol. 9 No. 20 April 24th. 1907 STELLARTON, N. S.

...DOMINION...

Iron & Steel Co'y,

LIMITED.

SYDNEY, NOVA SCOTIA.

<p style="text-align: center;">FOUNDRY</p> <h2 style="text-align: center;">PIG IRON.</h2>	<p style="text-align: center;">Basic Open Hearth</p> <h2 style="text-align: center;">STEEL</h2>
--	---

<p>Brands :</p> <p style="text-align: center;">"Dominion." "D.I.S.C."</p>	<p style="text-align: center;">Blooms, Billets Slabs.</p> <p style="text-align: center;">Rails <small>Weighing 56' bs, per lineal yd. and heavier</small></p> <p style="text-align: center;">WIRE RODS.</p>
--	---

A. B. C. & A. 1 Codes used.

Telegraphic Address, Latch, Haymills.

LATCH & BATCHELOR, Ltd.

AMALGAMATED WITH
WEBSTER & HORSFALL,

(ESTABLISHED 1730)

Works: **HAYMILLS, BIRMINGHAM, ENGLAND.**

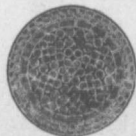
AGENT: **H. M. WYLDE,** P O Box, 529 **HALIFAX N. S.**

Patentees and Manufacturers of

Locked Coil and Flattened Strand WIRE ROPES.

Manufacturers of all Kinds of WIRE ROPES for

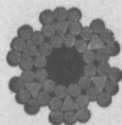
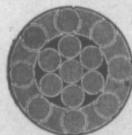
Mines, Tramways, Aerial Ropeways, Suspension
Bridges, Cranes, Elevators, Transmission of
Power, Steam Ploughing and General
Engineering Purposes.



Locked Coil Winding, Cable.



Locked Coil Aerial Cable or Colliery Guide.



Lang's Lay or Ordinary, Patent Flattened Strand Winding or Hauling, Patent Flattened Strand, (non spinning)

DRAWERS OF all Sections of **HIGH CLASS STEEL-WIRE.**

for Ropes, Springs, Pianos, Needles, Fish-Hooks
Binding Armatures and all other Purposes.

ACADIA POWDER CO., LTD.

MANUFACTURERS OF

DYNAMITE.

**Blasting and Sporting Powder, Pellet and
Grained Powder for Coal Mining.**

**FLAMELESS EXPLOSIVES for GASEOUS MINES,
DYNAMITE, for SUBMARINE BLASTING, SUBMARINE FUSES.**

—MANUFACTURERS AGENTS FOR—

**Electric Blasting Apparatus, Electric Batteries,
Electric Fuses, Insulated Wires, Safety Fuse
Detonators, Etc.**

OFFICE: —76 and 78—

Telephone 251. P. O. Box, 520

GRANVILLE ST., HALIFAX, N. S.

..J. W. CUMMING..

Designer and Manufacturer of

**COAL DRILLS and all kinds
High Grade Miners Tools,**

**MINE CARS AND HITCHINGS,
LIGHT AND HEAVY FORGINGS,
P. O. Box 50, -- New Glasgow, N. S.**

Miners Wanted

TO CHEW

PAY ROLL

Plug Tobacco

WANTED.

At the several collieries of the Dominion coal co. Limited, skilled coal miners and mine laborers.

Apply on the works Or by letter

Dominion Coal Company, Ltd

Genuine Garlock Packings

FOR ALL PURPOSES.

Pipe and Boiler Coverings,
ENGINEERS SUPPLIES.

also

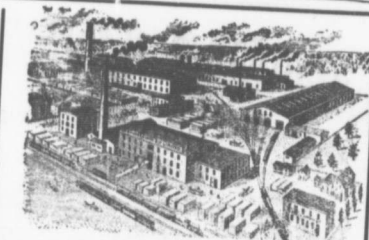
"Tauril" High Pressure Jointing
the Best Sheet Packing yet
Produced.

THE GARLOCK PACKING CO.
HAMILTON, ONTARIO.

Used by Collieries in Lancashire, Staffordshire & Yorkshire

'XTERRA' COLLIERY LAMP OIL.
For Marsuit, Mussels Deflector or Closed Lamp

PURE WHITE FLAME LOW PRICE
E. WOLASTON, Dutton St MANCHESTER
Sole Representatives for Canada, **AUSTEN BROS.,**
Halifax, N. S.



RAILWAY STREET and MINING
-MANUFACTURERS OF-
CARS,

CAR WHEELS Church Pews,
FORGINGS & Fittings for Stores, Schools, &
CASTINGS A SPECIALTY.

Large Stocks of Foreign and Domestic Lumber on Sale.

Rhodes, BUILDING MATERIALS
GENERAL
Curry & Co., Ltd.
Branch ROBBIE STREET, HALIFAX, N. S. AMHERST, N. S.

INTERCOLONIAL RAILWAY

On and after MONDAY, April 10 1907 trains run daily, Sunday excepted, as follows:-

---TRAINS LEAVE STELLARTON---

No 144 Mixed for Hopewell	5.55
No 79 Mixed for Trenton	6.30
78 Mixed for Hopewell	6.30
19 Express for Halifax and St. John	6.55
21 Mixed for Pictou Landing	7.40
62 Mixed for Pictou	7.40
65 Mixed for Mulgrave	7.45
19 Express for Sydny	8.30
28 Mixed for Pictou	11.10
66 Mixed for Truro	11.15
129 Mixed for New Glasgow	12.15
30 Express for Halifax and Montreal	12.40
140 Mixed for Pictou	12.45
103 Mixed for Pictou Landing	12.50
83 Express for the Sydney	12.50
83 Express for Hoewell	17.05
65 Mixed for New Glasgow	18.10
65 Express for Halifax and St. John	19.40
17 Express for New Glasgow	19.40
66 Express for Pictou	21.35
66 Express for Pictou	21.40

---TRAINS ARRIVE AT STELLARTON---

79 Mixed from Hopewell	6.30
78 Mixed from Trenton	6.55
61 Express from Pictou	7.35
19 Express from New Glasgow	7.35
21 Mixed from Hopewell	7.35
65 Mixed from Truro	7.35
100 Mixed from Pictou Landing	8.20
28 Mixed from New Glasgow	8.20
37 Mixed from Pictou	10.25
67 Mixed from Mulgrave	10.55
19 Express from Halifax and St. John	12.35
129 Mixed from Pictou	12.35
30 Express from Sydney	12.30
83 Express from Halifax and St. John	12.30
77 Mixed from Pictou Landing	17.00
28 Mixed from Hopewell	18.10
65 Mixed from Pictou	18.45
65 Express from the Sydney	19.35
66 Express from New Glasgow	19.40
17 Express from St. John and Halifax	21.35
66 Express from Pictou	21.35

Alterations are run by at six Standard time. Twenty four Parlor Cars between Halifax and Sydney. Dining Car on No. 83 train between Halifax and Mulgrave, on No. 20 train between Mulgrave and South River, on No. 19 train between South River and Mulgrave. On 20 train between Mulgrave and Halifax.

MINING RECORD

**WIRE
ROPE**

**HIGH GRADE WIRE ROPES FOR
Hoisting, Haulage, and Colliery Purposes.**

Manufactured by **Dominion Wire Rope Co., Ltd., MONTREAL.**
AUSTEN BROS.—HALIFAX AGENTS.

MONTREAL STEEL WORKS Limited.

STEEL CASTINGS
FORGINGS,
SPRINGS,
FROGS,
CROSSINGS,

We make a Speciality of cast Steel WHEELS

and other Steel Castings for **MINING PURPOSES.**

INTERLOCKING SWITCH AND SIGNAL Plants.

(Under the patents of Saxby & Faure, Limited, of London Eng)

CANAL BANK, POINT ST. CHARLES MONTREAL—

ESTABLISHED 1863.

Phillips Mine & Mill Supply Co.

PITTSBURGH, PA.

Works, South 23d, 24th, Jane and Mary Streets.

Office, 2227 Jane Street.

Screens, Screen Bars, Screening Plants Complete,
Car Dumps, Cars, Car Wheels, Larry Wagons, Hitchings, Etc.

LET US SUBMIT PLANS AND ESTIMATES.

MANUFACTURERS OF

Coal and Coke Works Equipment.

Head-quarters in Nova Scotia for

'White's' London Portland Cement.

'Gartcraig' Scotch Fire Brick,

Allan-Whyte and Company's Wire Ropes.

'Firths' and 'Black Diamond' cast Steel.

'Bennett's' Safety Fuse and Detonators.

STEAM PIPE AND FITTINGS.

WM. STAIRS, SON & MORROW, LIMITED,

HALIFAX, N S

General Hardware, Metals Plumbing and Mining Supplies.

HALIFAX, N. S

SMITH'S PURE FRUIT JAMS.

Strawberry, 12 oz. and 1 lb.
 Raspberry, 12 oz. and 1 lb.
 Gooseberry, 12 oz. and 1 lb.
 Peach, 12 oz. and 1 lb.
 Red Currant, 12 oz. and 1 lb.
 Black Currant, 12 oz. and 1 lb.

SMITH'S PURE JELLIES,

Red Currant,
 Grape,
 Quince,
 Crab Apple.

A. & W. Smith & Co.,
 Halifax, N. S.



**Double Strength
 Culvert Pipe a
 Specialty.**

**Canadian
 Sewer
 Pipe
 Co'y,**

HAMILTON, and TORONTO,
 —ST. JOHN, QUE.—

Mining & Mill Supplies.

**Valves,
 Fittings,
 Packing,**

**Steam Goods
 —of every—
 Description.**

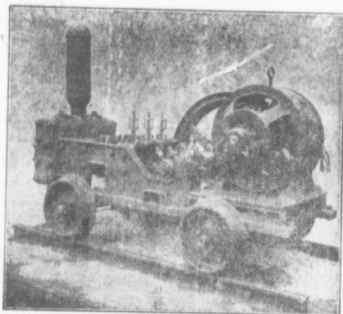


**Boiler
 Tubes,
 Steel
 Plates,
 Angles,
 Tees, etc.
 SOLID DIE
 RIVETS.**

**Iron Pipe for
 Mining Purposes.**

—Catalogues and Prices on Application.—

THOMAS ROBERTSON & CO.,
 —LIMITED,—
MONTREAL, QUE.
 —Established 1852—



Westinghouse Motor Driving Mine Track Pump.

Avoid Break-Downs.

Drive your apparatus with Westinghouse Motors. It is poor economy to save a few dollars on the first cost of a motor only to spend many for repairs, not to mention the loss attending interrupted service. Westinghouse Motors have a record for reliable, long, continuous service.

Canadian Westinghouse Co. Ltd.
General Offices: Hamilton, Ontario.

ADDRESS NEAREST OFFICE FOR PARTICULARS.
 Toronto—Traders Bank Bldg.
 Montreal—Sovereign Bank of Canada Bldg.
 Halifax—131 Granville St.
 Winnipeg—922-923 Union Bank Bldg.
 Vancouver—132 Hasting St.

ONE MAN'S VIEW. A well-known mining man recently finished an inspection of the ANTHRACITE coal fields of Pennsylvania. When asked what impressed him most, he said

"The acidity of the water, and the fact that of all the pumps I saw there two out of three were Jeannesville Pumps."

An installation at least that we know how to handle the acid water problem.

When you send us the lift and quantity of water and the available power, we will send you complete information about what we can do for you.

Our bulletin No. 8, fresh from the printer, is full of up-to-date information. Write for it now before you forget.

**Jeannesville
 Iron Works Co.,
 Hazleton, Pa.**



NOVA SCOTIA.
Mines of Gold, Silver, Coal,
- Iron, Copper, Lead, Etc.

Titles direct from the Crown
At Moderate Royalties.

GOLD AND SILVER.

Licenses are issued for prospecting for Gold and Silver for a term of twelve months. They comprise areas 150 by 250 feet, and any number can be obtained, at a cost of 50 cents per area. Leases of any number of areas can be obtained, at a cost of \$2.00 per area, for a term of 40 years; subject to an annual rental of 50 cents per area.

Licenses are issued to quartz mills, which make returns and pay royalty on the gold at the rate of two per cent, on milled Gold, valued at \$19.00 per oz.

Minerals other than
Gold and Silver.

-LICENSES TO SEARCH-

over five square miles for eighteen months, cost \$30.00; leases for four renewable terms of twenty years each can be selected from them at a cost of \$50.00, and are subject to an annual rental of \$30.00

All titles, transfers, etc., are recorded free of charge by the Department. The royalty on coal is 10 cents per long ton, and on other minerals in proportion.

The Gold District covers over three thousand square miles, and the deposits of coal iron ore, etc., are practically unlimited.

FOR INFORMATION APPLY TO

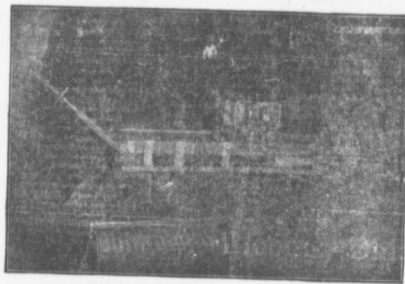
HON. W. T. PIPES,

Commissioner of Public Works and Mines, HALIFAX, N S

MINUDIE COAL COMPANY, L't'd.
 Operating the **MINUDIE MINES** in the Celebrated **CUMBERLAND COAL FIELD**
 Producers of High Class **SCREENED COAL, ROUND, RUN-MINE, SLACK.**
 The best for Foundry or Furnace, Locomotive or
 Stationary Engines, for Domestic or General use
 * **CLEAN AND CLINKERLESS.** *
 Direct connection with the I. C. R.
Colliery RIVER HEBERT, N. S.
 Mine Manager—HY. McCARTHER. Business Manager R. S. HIBBARD, River Hebert, N. S.
 GEO. H. BISSET Sec'y Treas. Head Office, Ground Floor, Temple Building, Montreal



Electric Coal Mining Machines.



Operating in the Mines of Carleton Coal and Coke Co.

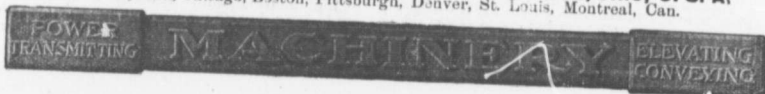
Coal Mining Machines, No. 11

Bulletins Free.

Electric Locomotives, No. 10.

Complete Mine Equipment.

The JEFFREY MANUFACTURING COMPANY, COLUMBUS, OHIO, U. S. A.
 New York, Chicago, Boston, Pittsburgh, Denver, St. Louis, Montreal, Can.



Sullivan Rock Drills.

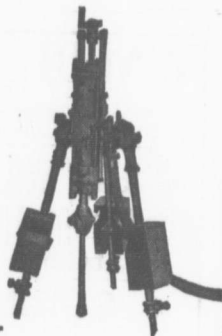
Costs less for Maintenance,
and drill faster than any
other Drill on the Market.
May we tell you why?

CATALOGUE 51.

Sullivan Machinery Company.

I. Matheson & Co. Limited, Agents. New Glasgow, N. S.,
Claremont, N. H.,

Chicago, Ill.



A. & W. MacKINLAY Miners Wanted.

LIMITED.

Rule and Print Special Blank Forms
for Mining and other Industrial
—Corporations.—

BLANK BOOKS ruled to pattern and
made in any Style of BINDING
Loose leaf supplies of all kinds made to
order.

135 to 137 GRANVILLE STREET.

HALIFAX, N. S.

Brick! Brick!

The Westellar Terra Cotta Company
having taken over the business of the Stellarton
Brick and Tile Co'y, and having installed more
powerful and modern machinery. WILL BE
PLEASED TO HAVE ENQUIRIES AS TO
PRICE AND QUALITY.

Works — SYLVESTER

Head Office — STELLARTON.

GEO. E. MUNRO, Sec'y, W. STVILLE, N. S.

Intercolonial Railway.

Tender.

Sealed Tenders, addressed to the undersigned, and marked on the
outside "Tender for Double-Tracking" will be received up to and in-
cluding, FRIDAY, MAY 10th., 1907, for the work in connection with
the double-tracking of the existing main line between Moncton and
Painse Junction, N. B.

Plans and specifications may be seen at the office of the Chief En-
gineer, Moncton, N. B., where forms of Tender may be obtained.

All the conditions of the specification must be complied with.
Railway Office, D. POTTINGER,
Moncton, N. B., April 18, 1907. General Manager.

Steady Employment, Good Wages,
and Free Land for Homes for Coal Miners,
at MINTO, NEW BRUNSWICK.

The New Brunswick Provincial Government will
give 10 Acres of Land FREE to Coal Miners
who will settle at Minto, N. B. The conditions
being the erection of a house and the occupation
of the land for three years, and working in any
of the Mines. For further information apply

to **W. C. HUNTER, Manager,**
New Brunswick Coal and Railway, (operated for
the province of New Brunswick by a Government
Commission,) Norton, N. B.

Coal Miners Wanted

—at—

Minto Mines. Minto N. B.

APPLY TO

G. H. KING,

CHIPMAN, N. B.

Titanium in steel is very rarely met with, it is
doubtful if any firm at the present time makes a
steel of this character. Titanium is one of the
most difficult metals to deal with on account of
its high melting point. It occurs in many makes
of pig iron, but its practical value in connection
with steel has yet to be found.—S. A. of Mining.

MARITIME MINING RECORD.

Vol. 9, No. 20. Stellarton, N. S., APRIL 24th 1907. New Series

WIRE ROPES.

R. S. NEWALL & SON, LIMITED,

LINACRE, LIVERPOOL,

and at 19 Royal Exchange Square,

GLASGOW.

MANUFACTURERS OF ALL DESCRIPTIONS OF

WIRE ROPES FOR MINING

AND OTHER PURPOSES.

CURTIS'S & HARVEY, LTD.

Manufacturers of all Descriptions of

...EXPLOSIVES...

BEST QUALITY ONLY.

Blasting Powder and Compressed Pellets, Dynamite,

Gelignite, Gelatine Dynamite and Blasting Gelatine.

PERMITTED EXPLOSIVES.

For use in Gaseous mines. Suitable for all kinds of Work.

Bobbinite, Curtisite, Excellite, Kolax, Rippite, &c., &c.

CURTIS'S & HARVEY, LTD. HEAD OFFICE
3 Gracechurch St. London, E.C.

AGENTS FOR NOVA SCOTIA

AUSTEN BROS. HALIFAX.

WALKER BROTHERS (WIGAN,) LIMITED

Wigan, England.

Air Compressors, Ventilating Fans, Winding Engines.

Largest Air Compressors in Canada are of

Walker Brothers (Wigan) Limited, Manufacture.

The following companies have installed **WALKER BROTHERS** Air Compressors, in capacity Ranging up to 6300 cubic feet of free air per minute, all of which are provided with **WALKER PATENT AIR VALVES**.

DOMINION COAL COMPANY, Ltd.

NOVA SCOTIA STEEL & COAL CO., Ltd

DOMINION IRON & STEEL CO., Ltd.

BELMONT GOLD MINE Ltd.

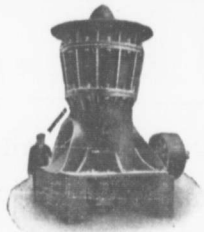
INTERCOLONIAL COAL MINING CO., Ltd.

CAPE BRETON COAL IRON & RY. CO. Ltd

SOLE CANADIAN
REPRESENTATIVES

PEACOCK BROTHERS CANADA LIFE B'LD'G
MONTREAL, P. Q.

HADFIELD'S STEEL Foundry Co., Limited. SHEFFIELD



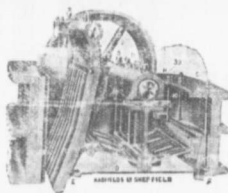
PERFECT GYRATORY
STONE CRUSHER.



CAST STEEL
BRONZE BUSHED,
SELF OILING

WHEELS & AXLES

WE MANUFACTURE
CRUSHING ROLLS,
ELEVATORS,
and Gold Mining Requisites.



HADFIELD'S PATENT

JAW CRUSHER

(Solid Steel Construction.)

The Parts that are subject to Excessive Wear are made of
Hadfield's Patent 'Era' Manganese Steel and other Patented
STEELS.

Sole representatives of the Hadfield Steel Foundry Company, Limited, Sheffield, for Canada,

PEACOCK BROTHERS, Canada Life Building, MONTREAL.

MARITIME MINING RECORD.

The MARITIME MINING RECORD is published the second and fourth Wednesday in each month.

The RECORD is devoted to the mining—particularly Coal Mining—Industries of the Maritime Provinces.

Advertising rates, which are moderate, may be had on application.
Subscription \$1 00 a year. Single Copies 5 cents.

R DRUMMOND, PUBLISHER.

STELLARTON, N. S.

April 24, 1907.

ANOTHER STEP FORWARD.

Unless the wholly unexpected happens there will soon be in active operation in Nova Scotia, another coal company whose operations will play no inconsiderable part in the development of the chief industry in Nova Scotia, that which is, without cavil, the backbone of the province, which furnishes employment to the largest proportion of her working population, distributes the largest sums of money, and contributes more than aught else, than indeed everything else combined, to the revenues of the province—coal mining.

The North Atlantic Collieries, Limited, the name of the new concern, was organized under the Joint Stock Companies Act of Nova Scotia in 1903. At first it was the intention of the company to operate from the south side, or south head, to be more accurate, of Cow Bay. The development of the areas from the south side, while quite feasible, would involve the exercise of much ingenuity, and the expenditure in purely preliminary work, of a very large sum of money. There might also arise complications with the owner of a few areas intervening between the areas under water held by the North Atlantic Company. In order, therefore, to avoid possible complications, and the necessity of heavy expenditure at the start, the company made propositions to the Gowrie and Blockhouse Company operating on the north side of the Bay, which after due deliberation were accepted, the result being that the Gowrie and Blockhouse Company has been absorbed by the North Atlantic Collieries, Limited. The property of the company is valuable and extensive. The North Atlantic Collieries, Ltd., hold six leases in its own name, in addition to nine leases still held under the name of the Gowrie and Blockhouse. In addition there are twenty-one areas in the vicinity of these leases held by the North Atlantic Company presumably intended to form part of the property of the consolidated concern. The company has therefore equal to thirty-six leases. There are six seams of coal running through the areas, and it is estimated that there can be extracted from them the very large quantity of 350,000,000 tons of coal, whose quality assures for it a large and ready sale. The names and the thickness of the seams are:

Blockhouse	9 feet
Gowrie	5 "
Spencer (or Eight Foot).....	8 "
Emery	5 "
Long Beach (Gardiner).....	3 "
Sixth Seam	4 "

It is claimed that the coal from all these seams is of good quality. There are those who incline to the opinion that the "Spencer" contains the same coal as the "Reserve" of the Dominion Coal Co.

The promoters of the enterprise gave evidence of no haste in the preparation of their plans, for its successful launching and for intelligent, extensive and economical operation. Great pains have been taken, and money expended in securing information in the United States as to scientific modes of working, and in Great Britain, Belgium and other European countries as to the methods employed in the successful mining of coal and its haulage long distances underground. The result of the labors of the promoters is the gathering of a fund of knowledge, and of much data, which must prove of immense value in future operations.

On the directorate are names of those to whom the business of launching big enterprises is not new. To give confidence in the undertaking it is only necessary to mention that H. M. Whitney, of Boston, and B. F. Pearson, of Halifax—to whom the province is under heavy obligation as the projectors of the Dominion Coal Co.—and Geo. E. Drummond of Montreal are three of the directors. It is the intention of the company to immediately commence development work. There will be no big splurges but a consistent and persistent scheme of development instead. The present shaft of the Gowrie and Blockhouse Co. will be utilized. It is claimed that by the expenditure of a sum not much over a hundred and fifty thousand dollars the Blockhouse Colliery can, in a short time, say, by the opening of navigation next year, be put in shape to produce a thousand tons a day. The present capacity of the pit is about 400 tons. With active shipment will proceed active development work, so that in 1909 the daily output in the shipping season will be fifteen hundred tons per day. Simultaneously with the development of the present workings, sinking of a second shaft in the vicinity of Long Beach, about a mile or so distant from the present colliery may be proceeded with. The present plant will be utilized as far as possible, but necessarily, owing to the intended increased shipments, it will have to be improved and extended. The coal will continue to be conveyed from the pit to the shipping pier by the aerial railway, but the buckets will be replaced by ones of greater capacity, the ropes will be removed and thicker ones substituted, and the pillars and pulleys strengthened. A large pocket, capable of holding a thousand tons, will be built on the pier. Cow Bay, or Port Morien, will be the shipping port of the company. The depth of water, some 22 feet only, might seem to be against the employment of steamers of large capacity. Fortunately improvements in methods of steamship building render the comparatively shallow water no great obstacle to big shipments. Steamers capable of carrying 6,000 tons on a draught of 21 feet are now being built and employed as coal carriers. It is the intention of the company to secure a number of steamers of this class for their trade.

A few years ago the question might have been asked of a company about to engage in the coal business, "Where will you market your product?" Such a question

would force a smile to-day. For the past year or two, and this year also, the demand for Nova Scotia coal is greater than the ability to supply. But should the present home market fall off there are other markets that can be secured. The demand for coal in Brazil, at this time, is heavy. The subject has been carefully gone into and it is claimed that shipments can profitably be made to Monte Video and other points, even should the coal carriers be forced to return empty.

The coal on the company's areas as has already been said, is excellent quality, and the quantity sufficient to last for many years, with the largest of outputs. Experts claim that no less a quantity than 350,000,000 tons are confined within the company's areas.

When, a year or two ago, reference was made to the formation of this company, the statement was boldly made that it would become a rival to the Dominion Coal Company in the extent of its operations and so forth. The new company will make no such attempt. There is no intention on the part of the promoters to put forth efforts to secure extraordinary outputs. For the next few years it does not expect to exceed shipments of two thousand tons a day, however later on its ideas may expand. There may be money, profits in shipments moderate in quantity, which is lost with attempts to make records. As frequently has been said, "It all depends on management." It is to be hoped the company profiting by the experiences of other companies will put a man at the head of affairs who is acquainted with conditions in Nova Scotia, and if the company is to be a great success it must not be forgotten that operations in Nova Scotia cannot well be directed from Boston or even from Montreal. Its affairs can best be administered from the seat of operations.

PRODUCTION AND FUEL COST.

A table, or rather part of a table, in the Mines Report, which is seldom noticed, or if noticed not referred to, and which yet should prove most interesting and profitable to students and to colliery managers and operators, is that dealing with the consumption of fuel at the collieries. A study of the table might furnish an answer, in part, to those who ask for a reason why the cost of production of coal is so high at some of the mines of this province. There is so great a discrepancy between the figures for some one colliery, and those for another, that one is almost forced to the conclusion that there has been haphazard in compiling the figures. In the case of the smaller producers, in Cape Breton and Inverness Counties, it may be as well to explain that hoisting is only performed, perhaps, in the winter months and that pumping and perhaps ventilation have to be carried on during the entire year. There must be waste at some of the collieries, ineffective plants, or bad management. It should ever be borne in mind that even at a colliery fuel is an important item. The Record hopes that the calling attention to the table may have the effect of inducing the wastrels, if there be any, to take example from collieries such as those of the N. S. S. & C. Co., the Dominion Coal Co., and say the Cumberland

Railway and Coal Co. To raise 5,800,000 tons of coal it took 360,000 tons of fuel. In other words, averaging the mines of the province, it took one ton of coal to raise 16 tons. The following table shows the tons per ton, and the cost per ton to the companies:

NAME OF COMPANY.	Tons Used.	Production per Ton.	Cost of Fuel Per Ton Raised.
Canada C. & Ry. Co.	10,763	5	30c.
Cumberland R. & C. Co.	36,439	13	12c.
Maritime Coal Ry. Co.	2,643	16	9½c.
Minudie Coal Co.	2,205	15	10c.
Prospect Coal Co.	1,564	22½	72c.
Strathcona Coal Co.	1,241	17	9c.
Acadia Coal Co.	49,381	6½	23c.
Intercolonial Co.	24,172	12½	12c.
N. S. S. & Coal Co.	4,631	8	18c.
Dominion Coal Co.	173,704	20½	7½c.
Gowrie & Bloehouse.	9,147	5	30c.
N. S. Steel & Coal Co.	16,714	40	4½c.
Sydney Coal Co.	54	70	2½c.
C. B. Coal Co.	685	5	30c.
Inverness Ry. & Coal Co.	18,526	11	14c.
Mabou Coal Co.	6,878	2½	55c.
Port Hood Coal Co.	4,549	4½	33c.

From the above it will be seen how variable is the consumption at the collieries. The cost, too, varies from 2½ cents, in the case of the Sydney Coal Co., to 55 cents in that of the Mabou Coal Co., among the smaller companies. Taking the large companies, it will be noticed that the Nova Scotia Steel and Coal Co. takes an enviable position, producing no fewer than 40 tons of coal for each ton consumed at the boilers.

Omitting the Sydney Coal Co., whose figures being so favorable are inexplicable, it is seen that in the worst case it takes a ton of coal to produce two tons, and in the most favorable a ton to produce forty. In Cumberland County, eleven and a half tons were raised per ton of coal consumed; in Pictou less than nine tons; in Cape Breton as much as nineteen tons, and in Inverness say eight tons. In order of merit then, that is in the order of most production from least consumption, Cape Breton County ranks first, Cumberland County second, Pictou County third and Inverness is at the foot of the ladder. There are no fine fractions in the foregoing calculations, but the figures are sufficiently close to serve their purpose. It is evident that much yet remains to be done at some of the collieries in the way of lessening waste of fuel.

Dividing the total quantity of coal sold to the workmen by the number employed it is found that every employee is a consumer to the extent of 7 tons per annum at Springhill, Chignecto, Westville and Stellarton; 6 tons at Minudie and New Campbellton; 5 tons at Gowrie; 4½ tons at Sydney Mines and Mabou; 4 tons at Strathcona, and 3 tons at the Marsh. The Dominion Coal Co.'s employees are consumers to the extent of 8 tons per man, while if the figures in the Mines Report are correct, the Port Hood workmen send up in smoke no less a quantity than 23 tons per man. The employees of the Nova Scotia Steel & Coal Co. are seemingly good stokers.

COAL PRODUCTION AND EMPLOYEES.

In the year September, 1905, till September, 1906, two hundred and eighty-five tons of coal were hoisted per employe, above and below ground, at the mines of the Cumberland Railway and Coal Co., Springhill; 220 tons at Joggins; 235 at Chignecto; 269 at Minudie, and 183 at Strathcona Mine, all in the County of Cumberland. In Pictou County, 320 tons were raised per annum for each employe of the Acadia Coal Co.; 360 tons per employe of the Intercolonial Coal Co. and 385 per employe at the Marsh mine. In Cape Breton County, there was produced 730 tons for every employe of the Dominion Coal Co.; 283 tons per employe of the Gowrie and Blockhouse Ltd.; 341 tons per employe of the Nova Scotia Steel & Coal Co., and 125 tons per employe of the Cape Breton Coal Co. In Inverness Co. for every employe of the Inverness Railway & Coal Co., there was produced 406 tons; of the Mabou Co., say 200 tons, and of the Port Hood Coal Co., 333 tons. From these figures it will be seen that Cape Breton County takes first place with 610 tons produced per man employed; Inverness County with 356 tons second; Pictou County third with 340 tons, and Cumberland Co. last with 261 tons. The average per man in the mainland collieries is 297 tons, and in the island collieries 590. The average for the province is 483 tons, which, on the whole, is satisfactory.

At the mines in Cumberland County, 1971 persons find employment; in the Pictou Collieries 2,439, or a total for the mainland of 4,410. At the mines in Cape Breton County 7051 men find employment; in Inverness County, 662, or a total for the Island of 7,713; a grand total for the province of 12,123 persons. This shows an increase over the numbers employed last year.

**EXAMINATION QUESTIONS FOR
CERTIFICATES OF COMPETENCY
AS MINE MANAGERS, ETC., ETC.**

With Answers Prepared by the Editors of Mines and Minerals. First Edition, International Textbook Co., Scranton, Pa. 568 pages, 99 illustrations. Price \$3.50.

We have not had opportunity as yet carefully to examine this publication, which must prove of great service for those wishing to qualify for positions in mines, etc.

In the preface the gradual development of the mine laws in the coal mining States of the United States is traced, which provided for certificated foremen, assistant foremen, and fire bosses in the mines of the country. For many years the *Colliery Engineer and Mines and Minerals* have published each month a set of questions as given by the various examination boards throughout the United States, Canada, and British Columbia, together with answers by the editors. These questions and answers have been arranged, all duplicates taken out, and other questions which have been collected from time to time, but which have not been answered through *Mines*

and *Minerals* have been added. This compilation therefore faithfully represents the range of subjects and the character of questions given in examinations for certificated mine positions in connection with the coal mines of the United States and Canada during the last two years.

The questions are often answered and illustrated more fully than a candidate for the certificate would be expected to answer them in an examination, as the book is intended to be of the most possible assistance to those preparing themselves for examinations. None of the general principles or theories have been given other than those asked for by specific questions, as the book is not intended to replace textbooks on mining, but to be used as a supplement to such textbooks. The position for which the examination was held and the locality in which it was held are denoted by italics at the end of each question, for, as far as possible, local questions have been answered in accordance with local conditions. Where the questions depend entirely upon the judgment of the one giving the answer and not upon general theoretical considerations, an effort has been made when possible to check the opinion of the editors by submitting the answer to some member of the local mining board.

The section "Suggestions to Candidates" gives practical advice to those entering examinations as to how to carry on the work. The last chapter of the book gives very fully the regulations of the various States governing certificated mine positions, and this is the first time this matter has been brought together in a single book. A comprehensive index and cross index and an elaborate table of contents add to the usefulness of the book.

The scope of the book is shown by the following chapter headings:

Surveying; Geology and Prospecting; Mine Gases; Safety Lamps; Inspection and Regulation of Gaseous Mines; Explosives and Blasting; Elementary Principles and Calculations of Mine Ventilation; Comparison of Airways; Splitting Air Currents; Conducting Air Currents; Measuring and Testing Air Currents; Establishing a Circulation of Air in Mine Ventilation; Mine Fans; Practical Points in Mine Ventilation; Opening a Mine; Method of Working Coal Beds; Coal Pillars; Timbering; Steam and Steam Boilers; Steam Engines; Hoisting; Haulage; Hydraulics and Pumping; Compressed Air; Electricity; Duties of Mine Officials; Miscellaneous; State Regulations Governing Certificated Positions.

ALUNDUM GRINDING WHEELS.

The Canadian Fairbanks Co., Ltd., with branches in Toronto, Winnipeg and Vancouver, have obtained the Canadian Selling Agency for the new Alundum Grinding Wheels, made by the Norton Grinding Wheel Co. Alundum has replaced the abrasives formerly used for grinding wheels—such as Corundum, and is said to be generally superior to anything of the kind heretofore employed. It is the next hardest abrasive to the Diamond and, being brittle, fractures easily, thereby assuring a sharp cutting wheel at all times. Alundum

is manufactured by a patented electrical process, at Niagara Falls, and extreme hardness and sharpness, with its remarkable uniformity, are the general characteristics. These wheels are being used by the large manufacturing and industrial concerns in Canada and are found to be very economical and efficient.

GOLD MINING NOTES.

THE new transmission line has over half its poles already, and orders are in for all the transformers and line supplies.

Mr. Forbes Rickard, a well known mining engineer, when he made his examination of the Micmac Mine last fall, advanced this theory of the formation of the Micmac vein, and it is undoubtedly the correct one.

THE Leipsigat Mining District has of late been very much handicapped by violent cases of mumps. In the Micmac Mine, and other mines in this district, there have been a great many men laid up with this disease. Where this malady has somewhat affected the output of the mines of Leipsigat District, the set back is only temporary.

THE advent of the new electric transmission line in Leipsigat district is looked forward to with great expectation by miners in this vicinity. Obtaining the power from the Mersey River at a cost of \$12 per h. p. per annum will make the difference between failure and success in a great many mines that have been shut down in the past.

OF late a number of English and American interests have quietly taken under option or purchased, a number of the properties in and around the Leipsigat Gold District. The electric power that is being brought into this district from the Mersey River, 23 miles away, and which is being obtained for \$12 per H. P. per annum, is making attractive mining possibilities in this part of Nova Scotia.

WITHIN a radius of 30 miles from the Micmac Mine, Leipsigat District, Nova Scotia, there is considerable excitement over the discovery of several new fissure veins. The principal and largest of this description has lately been discovered in the Gold River District, 29 miles from the Micmac Mine. This vein, as uncovered, is about eight feet wide, and shows the peculiar characteristics of the Micmac fissure, there being two distinct series of lenses of quartz overlapping each other, showing a secondary enrichment in the geological younger series of lenses.

The mining engineer in charge of operations at Middle River, C. B., is of the opinion that the district will soon become a large gold producer. Negotiations are proceeding for securing a stamp mill of five to ten stamps, to be used in conducting tests to prove the value of the tests. The engineer is confident that the test will result satisfactorily. In that event a very large mill rivaling that of the Richardson will be erected. The opinion is also expressed that the gravel if properly treated will yield gold in profitable quantities. If the project at Middle River turns out a success, prospecting for gold in C. B. will receive a big stimulus.

THE experiments made with turbine pumps in the Micmac Mine have proved so successful that the new electric installation in this mine will include a number of large turbine pumps in its estimates.

THE parties that have obtained options on the Brookfield and Malaga Mines, have also it is understood obtained options on properties adjoining the Micmac Mine, and which are on the same vein as this famous old mine.

IN the Micmac Mine they have been making relative tests of the qualities of the bituminous coal in this Province. For steam purposes, it has been found that the coal obtained from the Drummond Mine at Stellarton has given the best results.

THERE is work in the Leipsigat district for at least 50 first class miners, with wages better than ever before paid. The high price of miners' wages in Ontario has affected the wages of the Leipsigat district with great advantage to the miners. The class of labor obtained, however, at advanced prices is better than used to be.

THE management of the Micmac Mine is also considering the matter of sliming the tailings from their stamp mill, and turning their present cyanide plant into a slimes plant. It is understood that the plan is to use rock breakers, rolls and tube mills, and the Butter's pans' plans is as to the best method of saving the Filters. It seems that the only hitch in the above company's plans is as to the best method of saving the coarser gold that will not be touched by the cyanide solution, and as yet they are undecided whether to use stamps instead of rolls, or use some other kind of an amalgamating machine.

THE MINES ACT—AMENDMENTS.

The following are some of the most important clauses of the bill which has passed the House of Assembly, and which has reference to submarine coal mining. This bill caused a keen controversy between certain of the holders of coal areas and was contested inch by inch. The bill has been considerably altered since its first introduction.

1. Added to section two—"Submarine tract" means a lot, piece or parcel of land covered with water, or partly covered with water, of which one or more leases have been or may be issued, but does not include the land covered with the water of inland fresh water streams. "Tunnel" includes pits, shafts, slopes, way-leaves, right of way, sub-ways, cross-cuts between tunnels, groves, lodgements, sumps and also all roadways, railways, tram-ways, haulage-ways, cable-ways, passage-ways, travelling-ways and all other ways in such tunnels.

191A. In ever lease, covering any tract of ground covered with water or partly covered with water, there shall be a condition that the Governor-in-Council may grant to the holder of any other lease or leases covering any tracts of ground covered with water, the right to make, use and maintain such tunnels, through such tract of ground and through the mines and minerals therein as may be necessary or convenient for the purposes of

access to and of mining and working the mines and minerals in the ground covered by such other lease or leases upon such terms and conditions as may be prescribed by the Governor-in-Council.

74A. (1) Subject to the provisions contained in the section added by this amending Act every lessee of a submarine tract may, for the purpose of ventilating, draining, working and mining the said submarine tract and procuring and removing the coal therefrom, and for all other purposes necessary or incidental thereto, make, use and maintain, tunnels from any land belonging to him, or from any land acquired by him for mining purposes, to said submarine tract, through the said land belonging to him, or the land so acquired by him, and any intervening land or land covered with water belonging to any person or persons whomsoever, and through the mines and minerals in any such land belonging to him or so acquired by him, or in any such intervening land or land covered with water, and also (notwithstanding anything contained in the Mines Act or other Statute relating to mining) through any barriers, reserved under the provisions of the Mines Act or under any leases heretofore or hereafter issued or required under the provisions of the Coal Mines Regulation Act.

(2) Every lessee of a submarine tract who desires to acquire or exercise any of the rights, privileges, easements and powers conferred by the next preceding subsection, shall first serve upon the lessees of the mines and minerals in the land and land covered with water, through which such tunnels are proposed to be made, used and maintained, a notice in writing, which shall state: etc.

74B. (1) If the lessee of such submarine tract fails within thirty days after service of such notice on the lessees or lessee of the mines and minerals in the land and land covered with water, through which such tunnels are proposed to be made, used and maintained, to make an agreement as to the rights, privileges, easements and powers to be acquired or exercised, and the compensation to be paid therefor, he may apply to the Governor-in-Council for an order-in-council vesting such rights, privileges, easements and powers in him, and fixing the compensation.

74D. (1) The Governor-in-Council, after hearing the evidence adduced, and after any such investigations as have been ordered, may determine the matter of such application and by an order-in-council may vest in the lessee of said submarine tract for the term of the lease or leases covering said submarine tract or any renewals thereof or substitution therefor the rights, privileges, easements and powers applied for, or any of them, or such other rights, privileges, easements and powers as are deemed advisable by the Governor-in-Council, and may, in such order-in-council specify the number of tunnels to be made, etc., etc.

(2) Upon the making of such order-in-council and the payment of such compensation as is fixed in said order-in-council (or the giving of security satisfactory to the Governor-in-Council for the payment of such compensation), the rights, privileges and powers mentioned in such order-in-council shall forthwith, for the term of the lease or leases covering said submarine tract,

or any renewals thereof, or substitutions therefor, vest in the lessee of said submarine tract, and the said lessee may forthwith exercise the same.

(3) All coal and other minerals mined or removed in the making or maintaining of such tunnels by such lessee of said submarine tract shall become his property.

74E. (1) Except as hereinafter in this section provided, the lessee of the mines and minerals in land or lands covered with water, through which or through the mines and minerals in which, such tunnels are made, used or maintained, or who are affected by any of the rights, privileges, easements or powers vested or exercised by virtue of said order-in-council, shall not be entitled to any compensation or damages for any loss or injury sustained or suffered by them, or any of them, or the making, using, or maintaining of said tunnels, or otherwise howsoever, provided that nothing in this section shall exempt the lessee of any submarine tract from liability for loss or injury caused by negligence, or in consequence of any violation of the provisions of said order-in-council, or of any Statute in force relating to mining.

(2) Lessees of the mines and minerals in land and land covered with water, through which such tunnels are made, used or maintained, shall be entitled to such compensation as the Governor-in-Council determines. The amount of such compensation and the time or times when the same shall be payable, and so far as possible the persons to whom the same shall be payable respectively, shall be fixed by such order-in-council vesting such rights, privileges, easements and powers.

(3) Lessees of the mines and minerals in land covered with water, through which such tunnels are made, used or maintained, shall be entitled to such compensation as the Governor-in-Council may determine. The amount of such compensation and the time or times when the same shall be payable, and the persons to whom the same shall be payable respectively, shall be fixed by such order-in-council vesting such rights, privileges, easements and powers.

74F. (1) The amount or amounts of compensation payable by the provisions of such order-in-council may be paid by the lessee of such submarine tract at the time or times therein specified, into the office of the Prothonotary of the Supreme Court at Halifax in the following cases:

(a) If the person entitled thereto refuses to accept the same, or,

(b) If such persons is absent from the Province or cannot, after diligent enquiries, be found, or,

(c) If he fears the existence of any claim or incumbrances affecting the title, or,

(d) If the Governor-in-Council deems it advisable.

(2) The said payment into Court shall discharge the lessee of the said submarine tract from all liability in respect to the said compensation, and the person or persons entitled to such amount or amounts shall, on establishing his or their rights thereto, on a summary application or applications to the said Court or a Judge thereof, be entitled to have the same paid over to him or them on order of the Court or a Judge.

AROUND THE COLLIERIES

EVERYTHING is running smoothly at Sydney Mines. The Emery seam, at Dominion No. 6, will be further prospected at an early day.

ALL the men who worked at the Hub fire are given the preference when work has to be done at that colliery.

THE mills of the Nova Scotia Steel and Coal Co. are being pushed to their utmost capacity, in an effort to overtake orders.

THE Dominion Coal Company's heaps, or coal banks, will be enormously large before shipping begins if the present outputs continue, and are added to them.

THE falling stone, or thill, is being successfully kept up at Dominion No. 6 Colliery. As the mine gets deeper it may turn out that the stone will adhere better to the top rock.

AUSTEN KING, who formerly was superintendent of mines of the Dominion Coal Co., and was asked to resign, refused and was dismissed, brought action against the Dominion Coal Co. for three and a half years' salary at \$15,000 a year, and incidental expenses, totalling over \$80,000. The trial takes place in a few days before the Supreme Court, Halifax.

It seems that the coal mine operators are not alone in their apprehensions of a scarcity of labor the coming season. The complaint of the gold men is that suitable labor is scarce, and growing scarcer daily. The gold miners are leaving the province for Cobalt. The other day from an eastern county no fewer than thirty gold miners lifted their graith and went west.

IN the late stoppage at Springhill, when all the firemen, pumpmen, etc., stopped, the staff had to buckle to to keep the mine free from water, and for novices it must be said they performed their duties well, and except in a bottom lift kept the water within bounds. One of the officials had an arm scalded, and if he used strong adjectives, when referring to the members of Mechanics Lodge, he is to be excused. This coming out of the mechanics is not to be justified. It is not done in other countries, as it tends to a destruction or to a loss of property which of course reacts on the men.

IT was thought from the character of the borings at a depth of some 2,340 feet, that the Standard Coal Co., which is boring at Newville, Cumberland Co., had at length bored through the conglomerate. A few feet of pebbly fire clay was encountered at that depth. But the borers, unfortunately, had not done with the conglomerate, as after boring ten feet further it was again encountered. At a depth of 2,270 the bore hole still shows conglomerate. The company purpose taking out the calyx drill, which will only cut two feet or so of the refractory stuff per day, and again resort to the churn drill. It may be four weeks before boxing is recommenced.

SINCE repairs were effected at Dominion No. 1 good work is being done in the way of big outputs of coal.

THERE has been no further trouble with the lately heated sections in the Springhill Mine. There is scarcely any indications of heat.

THE miners generally at Springhill do well, indeed do splendidly, when they work. The several mines are in good condition, and are well ventilated.

CALEDONIA Mines is having its semi-annual supply of water, in consequence of which the pumps are absorbing most of the air pressure, and the shearing, in sections, had to be discontinued.

Was the late stoppage of work at Springhill, seeing it occurred not through any difference between the employers and the employees, a strike coming within the scope of the Industrial Disputes Bill? What is a strike?

THE surface around Reserve Mines is at present a very busy place; the new bankhead for the old mine, the bankhead for the Emery, the electric transmitter, and the new railway sidings betoken boom times at the colliery.

THE Dominion Coal Co. will have at least six steamers of 7,000 tons carrying capacity employed carrying coals the coming season. These steamers alone should carry more than a hundred and twenty thousand tons monthly to Montreal.

THE McKay seam, North Sydney, is four feet, clear, of good coal. The seam is a clean one without fault. Sufficient work has already been done to warrant the assertion that the property, if not large, is valuable. It is expected that the mine will be able to supply more than a local demand, and therefore arrangements are being entered into for shipments to Newfoundland, and other points.

It is stated that the management of the Dominion Coal Company has intimated to the executive of the P. W. A. that should there be any more stoppages of work at any colliery in an effort to induce non union men to join the society, that the company will withdraw the privilege at present enjoyed by the lodges, of having the dues of their members collected through the company's pay office.

At the suggestion of their Canadian agents, Messrs. Peacock Bros., of Montreal, the Hadfields Steel Foundry Co., of Sheffield, England, have issued a new Canadian catalogue. The Messrs. Hadfield have the largest steel foundry in the world, and have unequalled facilities for turning out their gyvatory crushers, manganese steel castings, wheels, axles, tool steel, picks and shovels, etc., etc., for the mining industry. If any mine manager, mining engineer, or others interested desire a copy of this catalogue the Messrs. Peacock will be pleased to furnish same on request.

PORT HOOD may be one of the first collieries to test the effectiveness of the new Industrial Disputes Act.

SEVERAL minor amendments to the Mines Act, having reference to the fencing of old shafts, the use of safety catches on cages, and check-weighman have been introduced and passed at the instance of the P. W. A.

THE electric plant at Dominion No. 2 is one that almost rivals the compressor plant in size and power. That it will be of great help to the compressor plant, which it was intended to supplement in the way of pumping, etc., there can be no doubt. There has, however, been some delay in connecting the plant with the various collieries.

TESTS are still being proceeded with in Dominion No. 2 with the explosive Axleite. The general opinion is in favor of any explosive that tends to greater safety. Further improvement in the size of the Axleite plug is necessary to ensure effective blasting. The plugs now used are too small and extend too far out in the holes to be effective at the point of greatest resistance.

THE Eastern Coal Company continue to make fair progress in development work at Maccan. It is expected the company will be in a position to make shipments in August or September, by which time the "sidings," it is expected, will be completed. At present the company is teaming a considerable quantity of coal to the railways and are selling quite a lot of coal locally. The quality of the coal is good, indeed in respect to quality it is exceeding the expectations of the management. It is steadily improving as the sinking proceeds.

THE No. 1 government drill is in service near the Gardner Mines, boring on the property of the Atlantic Coal Co. The areas of this company have been bonded to the Dominion Iron and Steel Co. It is said a five foot six seam of coal has been struck. The No. 2 drill is employed at Long Point, near Judique, Inverness County, boring in search for coal. There is no reason why coal should not be found in this locality. The No. 5 drill is boring near Homeville, Cape Breton County, on area of Cape Breton Coal, Iron & Railway Co., and No. 6 is at Newville, Cumberland County, doing service for the Standard Coal Co. Drills Nos. 3, 4 and 7 seem to be resting at Hantsport.

THE much derided Mullins seam may yet, and that not at a distant period, play an important part in coal production in Cape Breton. As is known, the Dominion Coal Co. is doing some heavy prospecting in the Lingan and Victoria areas, and the results to date are to give the Mullins the favorite place in the running. It has been struck three miles back, of a good thickness. Before however even this famous seam is selected there will be much more exploratory work. The company have so many seams to choose from that the officials are in a quandary. There is the Lingan main seam, the David's Head seam and another, the name of which has escaped the memory of the writer, and then in the Victoria areas there are, some say seven others say eight, and still others more than eight seams. What will the company do with them all is the problem.

THE Hub pit bottom is clear of water. Close inspection shows the shaft, and the bottom pillars less damaged than was at first supposed and generally expected.

THE shipments of coal for March are very disappointing. Only one colliery, the Inverness, shows increase in shipments. Stormy weather was the main cause of the falling off.

IT is thought that when the fire section in the Hub Colliery is passed, that the water will not be so hard on the pumps. The salt water will no doubt be underneath and then the pumps will have a chance of something like fair treatment.

THE Port Breton Railway Co. has been incorporated. The incorporators are John T. Tyler, I. Bouvier Peterson, and Chas. S. Dolly, all of Philadelphia, and Hiram H. Pearl of Port Malcom. The purpose of the incorporators is to build a railway about five miles in length, from Wright's Cove to a point near Port Hawkesbury, where it shall connect with the I. C. R.

IT is said that the 7 foot seam of coal being exploited at Port Malcom gives promise of losing its high angle. The pitch has dropped to about 40 degrees from the almost perpendicular. Those in charge are of the opinion that the angle will continue to get less as a greater depth is attained. About 100 men are employed, off and on.

THE output of the McKay Mine from this out will be steadily increased. Not only is the coal excellent for domestic and steam purposes, but is also from the small percentage of sulphur it contains, a first class coal for metallurgical purposes. A temporary landing has been laid in the 275 feet level to facilitate the handling of boxes till the lift is worked out. But for the stormy weather the first lift would have been won before now. A new steel wire rope is ordered and new draw bars and couplings will be put on the boxes at once, and in the course of a few weeks a large hoisting engine and the necessary boilers, etc., etc., will be installed. A number of new pit boxes are to be built, so that there will be no delay in output from want of rolling stock.

DR. ELLIS, M. P. P., prepared and had printed a bill which went to its first reading, dealing with gold mining leases. The bill proposed some drastic changes with regard to the tenure of leases. Some of the features of the bill were as follows:

No one was to be permitted to prospect for gold, or silver, or both combined, without first procuring a permit which could be obtained at the mines office for three dollars.

No license or lease was to be granted to any one who had not previously taken out a prospecting permit.

Forty days' labor was to be performed yearly on each area, with a discount growing larger as the areas held increase over ten. No one was to be permitted to hold less than 6, nor more than 10 acres. Dr. Ellis wisely withdrew his bill, in view of the present depressed state of gold mining. At the present time gold mining must be tenderly handled as it is, according to a high authority, suffering from numerous ailments.

NORTH Sydney Harbor was closed the whole of March, which accounts for the decreased shipments of the Nova Scotia Iron and Coal Co. Ordinarily the company, in March, supplied a considerable quantity of coal, as bunkers and cargo, to the "Bruce." This year the "Bruce" did not get into North Sydney in March. The car supply too was very far from satisfactory.

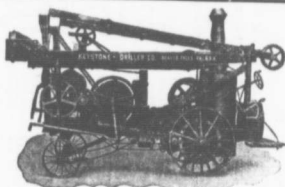
Good progress is being made at the McKay Mine, North Sydney. The slope has been sunk to nearly five hundred feet, and the main roads brushed. A large amount of work has been done at a comparatively small cost. The mine is now in order for a considerable quantity of shipments. Progress is being made with the sidings. Once a connection is made with the I. C. R., shipments will commence to be made with Sydney, where one or two fair sized contracts can be secured. An agency will be established at Sydney for the sale of the product of the mine.

THE Nova Scotia Technical College bill has passed both houses almost in the shape in which it was introduced. The bill is bald, and gives no idea how the scheme is to be carried out. The bill is divided into three parts, the first referring to the college, the second to trade schools, and the third to miners' school. The bill does not show any connection between the three. If the act is to benefit the miners, provision will have to be made, when details are being gone into, whereby the work of the miners' schools will be accepted as equal to the work of two years at any of the colleges in the province. Our suggestion is that anyone who has secured a manager's certificate shall be able to enter the technical college without examination. If something like this is not agreed upon then the college will not render the aid to the ambitious among our young miners that is expected of such an institution as a technical college.

A COMPANY with a small capital, but with extensive powers, has been incorporated at the present session of the local parliament. The charter is open to the charge of being a "blanket" charter, but the incorporators were able to give reasons for the small amount of capital, and why incorporation should be granted. It seems a number of persons interested in the development of Inverness Bay, are of opinion that the coal industry would be greatly benefitted, and of course the whole country, if an amalgamation of the several coal companies—that at Chimney Corner, at Inverness, at Mabou, and at Port Hood—could be effected. They hold that at present all the companies, except one, are handicapped by not having a proper port to ship from. The one good port at present is at Port Hastings, and is owned by the Inverness Railway and Coal Co. Further, the promoters hold that so long as facilities for shipping by rail are controlled by the Inverness Railway and Coal Co., itself a shipper of coal, the Mabou Co. and the Port Hood Coal Co. are bound to be disadvantaged by the Inverness people, appropriating an undue proportion of cars for their own purposes. It seems one or more of the companies are favorable to amalgamation; and incorporation is asked for so that all of the companies may be approached by a company having legal status. The Port Hood people are under the impression that they have not been generously dealt with by the Inverness Railway and would no doubt gladly welcome any *modus vivendi*.

COAL SHIPMENTS, MARCH 1907.

		DOMINION COAL CO., LTD.	
		OUTPUT AND SHIPMENTS	Shipments—
		Output—	
Dominion No. 1	18 777		
Dominion No. 2	43 590		
Dominion No. 5	13 491		
Dominion No. 4	35 738		
Dominion No. 5	50 967	162 688	
Dominion No. 6	9 893		
Dominion No. 8	15 123		
Dominion No. 9	25 272		
	212 831		
Shipments for	March 1907	162 688	
"	" 1906	178 132	
Decrease for	March 1907	15 444	
Shipments 3 Months	1907	493 882	
"	" 1906	535 221	
Decrease 3	" 1907	41 339	
INVERNESS RY. & COAL CO.			
Shipments for	March 1907	10 776	
"	" 1906	8 882	
Increase "	" 1907	1 894	
Shipments 3 Months	1907	38 578	
"	" 1906	21 449	
Increase 3	" 1907	17 129	
CUMBERLAND RAILWAY & COAL CO.			
Shipments for	March 1907	27 932	
"	" 1906	40 157	
Decrease "	" 1907	12 169	
Shipments 3 Months	1907	75 786	
"	" 1906	125 325	
Decrease 3	" 1907	49 539	
NOVA SCOTIA STEEL & COAL CO.			
Shipments for	March 1907	21 855	
"	" 1906	23 801	
Decrease "	" 1907	1 946	
Shipments 3 Months	1907	86 826	
"	" 1906	90 118	
Decrease 3	" 1907	3 292	
ACADIA COAL CO.			
Shipments for	March 1907	18 420	
"	" 1906	19 209	
Decrease "	" 1907	779	
Shipments for	March 1907	63 919	
"	" 1906	57 823	
Increase "	" 1907	6 096	
INTERCOLONIAL COAL CO.			
Shipments for	March 1907	16 820	
"	" 1906	25 166	
Decrease "	" 1907	8 346	
Shipments 3 Months	1907	58 972	
"	" 1906	64 307	
Decrease 3	" 1907	5 335	



The KEYSTONE
Percussion Core Drill Attachment
 is an economical appliance for
TESTING COAL LANDS.

It can be used in connection with any good "churn" drill, but operates best on the long stroke KEYSTONE, thus making the cheapest and quickest method of boring to be found.
 In operation a hole is sunk to the coal with the ordinary Rock Bit. The Bit and Stem are then removed and the Coring Attachment put on in their place. It takes a 4 ft. core out of the Softest as well as the Hardest part of the vein. Avoids all delay and expense of "rolls" water wash, diamonds, shot, and heavy operating mechanism.

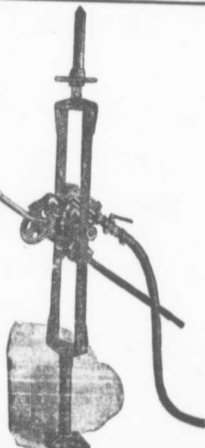
Price of Complete Attachment
\$200.00

Catalog No. 2 B. is a book on the subject.
 We make Water, Oil & Test Well Drillers
 for all depths and purposes.

Keystone Driller Co. Beaver Falls, Pa.

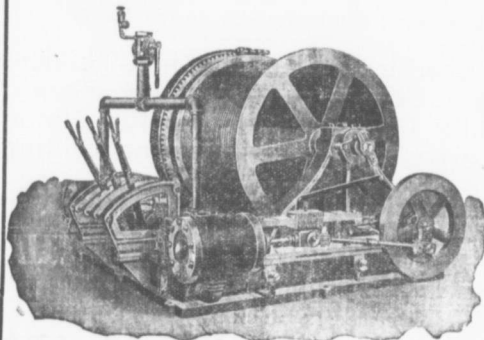
The TORNADO
AIR POWER
COAL DRILL

is used extensively
 by the
 Dominion Coal Co
 Nova Scotia Steel
 and Coal Co.,
 Inverness Ry.
 and Coal Co.
 and others.



Herzler & Henninger Mach. Works
Manufacturers of
H. & H. Coal Cutters & Tornado Coal Drills
Belleville, ILL., U. S. A.

"Lidgerwood" Hoisting Engines.



This is a view of our combined friction driven and brake and reversible link motion hoisting engine. The most economical for mining purposes ever built.

We are the exclusive builders in Canada of the "Lidgerwood" Hoisting Engines, the standard of the world for mining and general contracting.

Works, Montreal.
Branch Office, New Glasgow

Allis-Chalmers-Bullock, L't'd.

CHAINS. CHAINS.

(All Sizes in Stock.)

"EDGES" BEST SPECIAL CRANE CHAINS.

Cannot be Excelled for **HIGH CLASS QUALITY** and **WORKMANSHIP**.
They are made of the very best brands of English Bar Iron and by Selected Workmen.

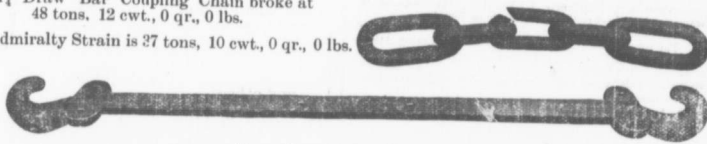
Makers of every Description of Chains
for Mining and all Engineering Purposes,

Coupling Chains and Solid Forged Draw Bars

For Mine Cars, A SPECIALTY.

This 1½" Draw Bar Coupling Chain broke at
48 tons, 12 cwt., 0 qr., 0 lbs.

The Admiralty Strain is 27 tons, 10 cwt., 0 qr., 0 lbs.



Draw Bar for Coal Car.

Edge & Sons, Limited,
SHIFNAL, England:

Tel. address "Edge" Shifnal.
"Codes" A. B. C. and Bedford McNeills"



YALE AND TOWNE CHAIN HOISTS, CRANES, AND WINCHES,

are the **Greatest Lifting Devices on the Market.**

They are used by the leading Manufacturing and Industrial Companies for setting machinery, Handling Merchandise and for almost Every conceivable purpose in the line of lifting.

The Yale and Towne Triplex HOISTS

will outlast and outlast any other
in **Economy, Ease and Safety.**

They save and utilize power wasted by other Hoists.

Carried in Stock by

THE CANADIAN FAIRBANKS CO., LTD.
MONTREAL.

Toronto, Winnipeg, Vancouver. Sales Agents.



Synopsis of Canadian North-West. Homestead Regulations.

ANY even numbered section of Dominion Lands in Manitoba or the North-West Provinces, excepting 8 and 20, not reserved, may be homesteaded by any person the sole head of a family, or male over 15 years of age, to the extent of one quarter section, of 160 acres, more or less.

Application for homestead entry or inspection must be made in person by the applicant at the office of the local Agent or Sub-Agent.

An application for entry or inspection made personally at any Sub-agent's office may be by the local Agent by the Sub-agent, at the expense of the applicant, and if the land applied for is vacant on receipt of the telegram such papers to complete the transaction are received by mail.

In case of "personation" the entry will be summarily cancelled and the applicant will forfeit all priority of claim.

An applicant for inspection must be eligible for homestead entry, and only one application for inspection will be received from an individual until that application has been disposed of.

A homesteader whose entry is in good standing and not liable to cancellation, may, subject to approval of Department, relinquish it in favor of father, mother, son, daughter, brother or sister, if eligible, but to no one else, on filing declaration of assignment.

Where an entry is summarily cancelled, or voluntarily abandoned, subsequent to institution of cancellation proceedings, the applicant for inspection will be entitled to prior right of entry.

Applicants for inspection must state in what particulars the homesteader material particulars, the applicant will lose any prior right of re-entry, should the land become vacant, or if entry has been granted it may be summarily cancelled.

DUTIES.—A settler is required to perform the conditions under one of the following plans:—

(1) At least six months' residence upon and cultivation of the land in each year during the term of three years.

(2) If the father (or mother, if the father is deceased) of a homesteader resides upon a farm in the vicinity of the land entered for by such homesteader, or the requirement as to residence may be satisfied by such person residing with the father or mother.

(3) If the settler has his permanent residence upon farming land owned by him in the vicinity of his homestead, the requirement may be satisfied by residence upon such land.

Before making application for patent the settler must give six months' notice in writing to the Commissioner of Dominion Lands at Ottawa, of his intention to do so.

SYNOPSIS OF CANADIAN NORTH-WEST MINING REGULATIONS.

COAL. Coal lands may be purchased at \$10 per acre for soft coal and \$20 for anthracite. Not more than 250 acres can be purchased by one individual or company. Royalty at the rate of ten cents per ton of 2000 pounds shall be collected on the gross output.

QUANTITY. A free miner's certificate is granted upon payment in advance of \$5 per annum for an individual, and from \$50 to \$100 per annum for a company according to capital.

A free miner, having discovered mineral in place, may locate a claim 1500 x 1000 feet.

The fee for recording a claim is \$5.

At least \$100 must be expended on the claim each year or paid to the mining recorder in lieu thereof. When \$500 has been expended or paid, the locator may, upon having a survey made, and upon complying with other requirements, purchase the land at \$1 per acre.

The patent provides for the payment of a royalty of 2 1/2 per cent on the sales.

Placer mining claims generally are 100 feet square; entry fee \$5 renewable yearly.

A free miner may obtain two leases to dredge for gold or free miles each for a term of twenty years, renewable at the discretion of the Minister of the Interior.

The lessee shall have a dredge in operation within one season from the date of the lease for each mile. Rental \$10 per annum for each mile of river leased. Royalty at the rate of 2 1/2 per cent collected on the output after it exceeds \$10,000.

W. W. COLE,
Deputy of the Minister of the Interior.

EMPIRE TRUST CO.

Head Office

187 Hollis St., HALIFAX

Advantages over Individual Trustees: Permanent. Absolutely Confidential. Trusts not imperilled by failure or dishonesty. It does not resign. Equipment for safeguarding securities.

Apply to Bank of N. S. for folders.

Miners Wanted To Chew BULL DOG TOBACCO,

Because it is the only Tobacco which does not excite **Thirst** for Water after using.

TRY IT!

The St. Lawrence Tobacco Co., Ltd.

—Montreal.—

—W. B. Reynolds, Halifax Representative—

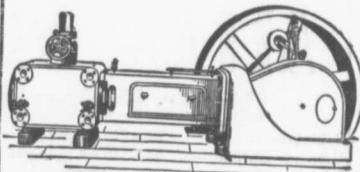
The Archibald Company, Limited

Hats, Caps, Straw Goods, all kinds of
Fur Goods and Men's Furnishings.

Wholesale only,

TRURO, Nova Scotia.

Long Stroke Engines.



We manufacture a full line of sizes of the style of engine shown in cut, either Corliss type or with Sweet balanced valve.

They are fitted with Robb-Armstrong automatic governors which give close regulation and high economy.

Oil is forced through piping to all bearings, ensuring positive and copious lubrication.

They are built on the interchangeable system and duplicate parts exact in fit can be supplied on short notice.

Robb Engineering Co., Limited,
AMHERST, N. S.

For Breakfast Dinner, Supper, anytime
**Hamilton's Peerless
 Cream Sodas;**

will satisfy the most exacting demands.

CRISP, APPETIZING, and WHOLESOME, they are making
 life long friends wherever introduced, and they
 cost no more than the other kind.

Put up in all styles of packages, and sold by all good
 Grocers, or from:

G. J. HAMILTON, & SONS.
 Pictou, Halifax, St. John.

Contractors to Admiralty and War Office, also Colonial Governments.

ALLAN, WHYTE & C'O'Y.

Clyde Patent Wire Rope Works,

Cablegrams:

"Ropery Rutherglen,"

Rutherglen, Glasgow, Scotland.

Cables, A. B. C. 6th & 7th Eds.
 A. L. Liebers and Private.

Wire Ropes

for
 Winding & Haulage
 in
 Collieries and Mines.

**Aerial Ropeways, Suspension Bridges, etc. Specially
 flexible for Ore & Coal Discharging Cranes, Winches, etc.**

The Nova Scotia Steel & Coal Co., Ltd., who use our Ropes largely, write that one of our Haulage Ropes at Wabana Mines has been in service for over 5 years, drawing over 1,750,000 tons in that time and is still good for further considerable service.

Agents in Nova Scotia:—**Wm. Stairs, Son & Morrow, Ltd., Halifax.**
 Agents in New Brunswick:—**W. H. Thorne & Co., Ltd., Saint John.**

—Different Sizes and Qualities kept in Stock—

CAPE BRETON COLLIERY.

NEW CAMPBELTON CAPE BRETON N. S.

SUPERIOR
STEAM AND DOMESTIC COAL

SAFE AND CONVENIENT SHIPPING PORT

The Nearest Coal Port to Newfoundland

Just Inside Entrance Great Bras d'Or.

Vessels from P. E. I. and Western Ports, via St. Peter's Canal, will save time by loading at New Campbellton. Smooth Inland Navigation. Quick Despatch.

- - J. T. Burchell Manager.

INVERNESS IMPERIAL COAL

INVERNESS RAILWAY and COAL COY.
Inverness, Cape Breton.

Miners and Shippers of INVERNESS (BROAD COVE)

Screened, Run-of-Mine Slack.

—First Class both for Domestic and Steam Purposes.—

BUNKER COAL Shipping facilities of the most modern type at Port Hastings, C. B. for prompt loading of all classes and sizes of Steamers and sailing vessels.

Apply to Inverness Railway and Coal Company, Inverness, Cape Breton; Wm. Petrie, Agent, Port Hasting, C. B.

INVERNESS RY. & COAL CO'Y

Time Table No. 21, Taking effect at 1 a.m. Oct. 22nd, 1906.

EASTBOUND		STATIONS.	WESTBOUND	
Read Down			Read Up	
No. 52 a. m.	No. 54 p. m.		No. 53 p. m.	No. 51 a. m.
L 11 10	L 2 55	P. TUPPER JUNCTION	A 11 00	A 2 55
S 11 16	S 3 00	PORT HAWKESBURY	S 10 55	S 3 00
A 11 20	A 3 05	PORT HASTINGS	L 10 45	L 3 05
L 4 15	F 4 30	TROY.	A 10 37	F 4 15
F 4 45	F 4 45	CRAIGSBIE	F 10 27	F 4 30
F 4 50	F 4 50	JUDIQUE	S 10 15	S 4 45
F 4 55	F 4 55	CRAIGSMORE	S 10 05	F 4 50
F 5 00	F 5 00	CATHERINES POINT	S 9 45	F 5 00
A 5 20	L 5 45	PORT HOOD	L 9 29	A 5 20
L 5 45	S 5 58	GLENCOE	L 9 15	L 5 45
S 6 00	S 6 21	MABOU	A 9 05	S 6 00
S 6 25	S 6 43	GLENDYRE	S 8 55	S 6 25
S 6 50	S 7 07	BLACK RIVER	S 8 45	S 6 50
A 7 20	p. m.	STRATHLOANE	S 8 30	A 7 20
		INVERNESS	L 7 50	

Trains make close connections at Pt. Tupper Jct. with I. C. R. passenger trains, excepting the Martime Express.

MABOU & GULF COAL COMPANY, L'T'D.

Miners of the

MABOU DIAMOND COAL.

Burns and Works like Bituminous;

Looks and Lasts Like Anthracite;

IT HAS NO EQUAL.

Mines, Piers
and General Offices

MABOU, CAPE BRETON.

ADVERTISE IN THE MINING RECORD.

DOMINION BRIDGE CO., LTD., MONTREAL, P. Q.

BRIDGES

TURNTABLES, ROOF TRUSSES
STEEL BUILDINGS
ELECTRIC & HAND POWER CRANES
Structural METAL WORK of all kinds

BEAMS, CHANNELS, ANGLES, PLATES, ETC., IN STOCK

Users of Steam

IF YOU WANT TO SAVE FUEL, Use

B. & W. BOILERS,

Over 6,000,000 H. P.
in use.

Patent Steam Superheaters,

2,000,000 H. P. in Use.

Mechanical Stokers, Coal Conveyors, Electric Cranes.

—Circulars and full information on application.—

BABCOCK & WILCOX, Limited.

Head Office for Canada.....11 PLACE D'ARMES, MONTREAL

Branch Office.....TRADERS BANK BUILDING, TORONTO.

In order to serve its customers in Alabama to the best possible advantage, the Sullivan Machinery Company will establish a Branch Office and Warehouse at number Twelve South Twentieth Street, Birmingham.

The United States exported to Canada last year 2,176,000 tons of Anthracite and no fewer than 5,357,000 tons of bituminous. The increased exports of bituminous to Canada were 100,000 tons in excess of the increase in production 1906 over 1905 of the Nova Scotia mines. The imports of bituminous coal from the States exceed the total production of Nova Scotia coal.

George Patterson,

BARRISTER, SOLICITOR, ETC.

NEW GLASGOW, N. S.

Successor to Sinclair and Patterson—

JERSEY - LILY - FLOUR.



Best all round flour on the market.

Uniform in quality. Every barrel

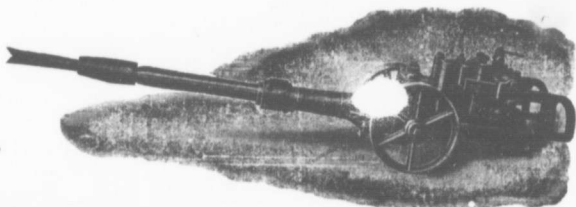
can be depended upon. This flour can

only be had in Cape Breton at the stores

of the Dominion Coal Company.

Harrison Improved Coal Cutters.

Air
Com-
pres-
sors.

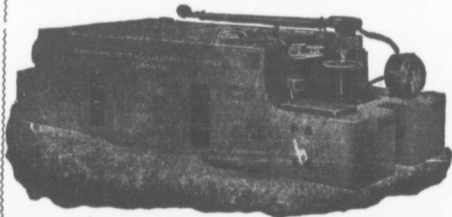


R
Rock
Drills.

CANADIAN RAND COMPANY, LIMITED.

Halifax Office, 116 Hollis St.

G. L. BURRITT, Agent.



**Electric Locomotives
for Mines,
Electrically Driven
Hoists.**

Motor operated Air Compressors,
Complete Electric Installations.

—Write us your requirements—

**Canada General Electric Company, Limited.,
Head Office, Toronto, Ont.**

District Offices:—Montreal Halifax Ottawa, Winnipeg, Vancouver, Rossland.

RUBBER HOSE for Air Drills, Pneumatic
Tools, Steam, Suction, etc.

"REDSTONE SHEET PACKING,"

For highest pressures with Steam, Hot or Cold Water and Air.
The most durable and satisfactory Packing on the Market.

RUBBER BELTING For Transmitting, [Conveying and Elevating.
Unequalled for Durability and Power Transmitting Qualities.

—MANUFACTURED BY—

The Gutta Percha & Rubber Mfg. Co. of Toronto, Ltd.

Branches at Montreal, Winnipeg and Vancouver

Head offices, 47 Yonge Street, Toronto

Acadia Coal Company, Limited.

STELLARTON, NOVA SCOTIA.

Miners and Shippers of the

CELEBRATED

ACADIA COAL.

Unexcelled for Steam, Domestic and General Purposes.

DELIVERED BY RAIL OR WATER.

SHIPPING PORT: PICTOU LANDING.

Quotations Furnished Promptly on Application.

MARITIME COAL, RAILWAY & POWER CO. Ltd.

Miners and Shippers of

CHIGNECTO HIGH GRADE **COAL.** Steam AND Domestic

Unexcelled for General Use.

Shipments to all points reached by the
 Intercolonial Railway.

Offices and Colliery - - - Chignecto, N. S.

DAVID MITCHELL, General Manager.

The BROWN MACHINE COY.,

New Glasgow, Nova Scotia.

Coal and Gold Mining Machinery a specialty

Endless Haulage Engines, Revolving Tipples, Picking Tables and Complete Screening Plants for the Cleaning and Picking of Coal. Rope Wheels, Pumps, Valves, Shafting, Belting Etc.

Complete equipments furnished for Coal or Gold mines.

Screening plants are now in operation at Sydney, Springhill, Broad Cove, Port Hood and Westville Mines

Estimates cheerfully given

CORRESPONDENCE SOLICITED

JOHN L. BLAIKIE Esq.
PRES.

EW RATHBUN Esq.
VICE PRES.

**THE BOILER INSPECTION
& INSURANCE CO.**

OF CANADA



CONSULTING ENGINEERS
G. C. ROBB CHIEF ENGINEER

HEAD OFFICE TORONTO

WHEN WERE YOUR
.. BOILERS ..
... LAST INSPECTED ...

WRITE TO
G. W. JONES, Agent,
Halifax, N. S.
-OR TO-
A. BONNYAN, INSPECTOR
Amherst N. S.

SCREENS.



B. GREENING WIRE CO.
(LIMITED)
WIRE MANUFACTURERS
& METAL PERFORATORS
HAMILTON
& MONTREAL.

Perforated Steel, Steel Wire. For miners and every other use
Write for Special Catalogue.

THE B. GREENING WIRE COMPANY, LIMITED.
HAMILTON, ONT. MONTREAL, QUE

**DRUMMOND
COAL.**

INTERCOLONIAL COAL MINING CO., Limited,
WESTVILLE, NOVA SCOTIA.

MANUFACTURERS AND MERCHANTS SHOULD ADVERTISE IN THE
MARITIME MINING RECORD Rates Moderate.

GOWRIE AND BLOCKHOUSE COLLIERIES, LIMITED.

OF NEWCASTLE ON TYNE.

MINE AND LOADING PIERS, PORT MORIEN, COW BAY
CAPE BRETON, N. S.

Miners and Shippers of GOWRIE COAL.

The Reputation of this Coal has Steadily Advanced during the past 40 years and the Output of the new Mine is fully up to the old Standard of Excellence.

Especially designed Piers for the rapid delivery of coal into Vessels by Roe and Bedlington's Patents.

OFFICES:—Canada, Port Morien, Cape Breton, Nova Scotia. England, Newcastle on Tyne.

The JOHN McDOUGALL Caledonian Iron Works Co., Ltd.

Montreal Que.

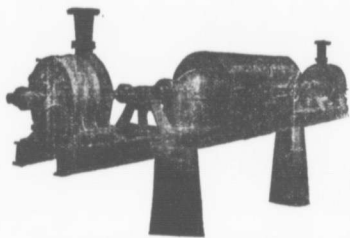
BOILERS: All Sizes and all Pressures.

PUMPS

Worthington Pumps for
Water Works and Mines.

Water Wheels

Doble Water Wheels for high heads.



Two Worthington 3-stage Turbines and McCormick Water Wheels, built for Port Arthur, Ontario, Water Works. Combined capacity 1440 gallons per minute against 350 head.

Mill Machinery

Etc. Etc.

Dominion Coal Company, Ltd.

Miners of

Bituminous Coals, the celebrated "Reserve" coal for household use, "International" Gas coal, and the best Steam coal from its collieries on the Phalen seam.

—Yearly output 3,500,000 tons.—

ANALYSES.

ANALYSES OF GAS AND STEAM COAL MADE BY J. & H. S. PATTINSON, CHEMISTS,
—NEWCASTLE, ENGLAND.—

	STEAM COAL.	GAS COAL
CARBON.....	80 18 per. cent.	77 51 per. cent]
HYDROGEN	5 11 " "	5 22 " "
OXYGEN	7 34 " "	6 72 " "
NITROGEN	1 16 " "	1 27 " "
SULPHUR	0 56 " "	3 07 " "
ASH.....	2 30 " "	4 10 " "
WATER.....	3 35 " "	2 11 " "
	100 00	100 00

Calorific Power of Steam Coal:—Pounds of Water evaporated from 212 per cent Fah, by one pound of the coal as determined in Thompson's Calorimeter,—14.8 lbs.

Shipping facilities at Sydney, and Louisburg, G. B., of most modern type. Steamers carrying
—6000 tons loaded in 24 hours.—

Special attention given to quick loading of sailing vessels. Small vessels loaded with
quickest despatch.

::: BUNKER COAL :::

The Dominion Coal Co. has provided unsurpassed facilities for Bunkering Ocean going Steamers with Dispatch. Special attention given to Prompt loadings. Steamers of any Size are bunkered without detention.

By Improved screenings appliances lump coal for Domestic trade is supplied of superior quality.

Prices. Terms, etc. may be obtained at the Offices of the Company.

ALEXANDER DICK Genl. Sales Agent, Glace Bay, N. S., Can.

DOMINION COAL COMPANY, LIMITED,
DOMINION COAL COMPANY, LIMITED,
DOMINION COAL COMPANY, LIMITED,

112 St. James St., Montreal, Que.
171 Lower Water St., Halifax, N. S.
Quebec, Que.

—and from the following agents.—

R. P. and W. F. Starr, St. John, N. B.
Harvey & Co., St. John's, Newfoundland.
Hull Blyth & Co., 4 Fenchurch Avenue, London, E. C.

Peake Bros. & Co. Charlottetown, P.E.I.
A. Johnston, and Co., Stockholm, Sweden.

G. H. DUGGAN,

2nd. Vice President

CUMBERLAND

RAILWAY AND

COAL COMPANY.

OPERATING THREE
THICK SEAMS
NOS 1, 2 AND 3.

—Miners and Shippers of the Well Known—

FRESH MINED SPRINGHILL COAL

... ANALYSIS ...

	NO 1	NO 2	NO 3
Moisture.....	2.02%	1.41%	2.71%
Volatile combustible matter	18.94%	27.93%	28.41%
Fixed Carbon.....	75.29%	67.47%	64.69%
Ash.....	3.75%	3.19%	4.19%
	100.00	100.00	100.00
Sulphur.....	1.15%	58%	.79%

BEST COAL FOR

LOCOMOTIVE USE.

Delivered By Rail or Water

BEST COAL FOR

GENERAL STEAM PURPOSES.

The year Round

IN Lots To Suit Purchasers.

BEST COAL FOR

DOMESTIC CONSUMPTION.

BEST GAS COAL

Mined in the Province.

Mines

SPRINGHILL

N. S.

Head Office

MONTREAL