

Technical and Bibliographic Notes / Notes techniques et bibliographiques

The Institute has attempted to obtain the best original copy available for filming. Features of this copy which may be bibliographically unique, which may alter any of the images in the reproduction, or which may significantly change the usual method of filming, are checked below.

L'Institut a microfilmé le meilleur exemplaire qu'il lui a été possible de se procurer. Les détails de cet exemplaire qui sont peut-être uniques du point de vue bibliographique, qui peuvent modifier une image reproduite, ou qui peuvent exiger une modification dans la méthode normale de filmage sont indiqués ci-dessous.

Coloured covers/
Couverture de couleur

Coloured pages/
Pages de couleur

Covers damaged/
Couverture endommagée

Pages damaged/
Pages endommagées

Covers restored and/or laminated/
Couverture restaurée et/ou pelliculée

Pages restored and/or laminated/
Pages restaurées et/ou pelliculées

Cover title missing/
Le titre de couverture manque

Pages discoloured, stained or foxed/
Pages décolorées, tachetées ou piquées

Coloured maps/
Cartes géographiques en couleur

Pages detached/
Pages détachées

Coloured ink (i.e. other than blue or black)/
Encre de couleur (i.e. autre que bleue ou noire)

Showthrough/
Transparence

Coloured plates and/or illustrations/
Planches et/ou illustrations en couleur

Quality of print varies/
Qualité inégale de l'impression

Bound with other material/
Relié avec d'autres documents

Continuous pagination/
Pagination continue

Tight binding may cause shadows or distortion along interior margin/
La reliure serrée peut causer de l'ombre ou de la distorsion le long de la marge intérieure

Includes index(es)/
Comprend un (des) index

Title on header taken from: /
Le titre de l'en-tête provient:

Blank leaves added during restoration may appear within the text. Whenever possible, these have been omitted from filming/
Il se peut que certaines pages blanches ajoutées lors d'une restauration apparaissent dans le texte, mais, lorsque cela était possible, ces pages n'ont pas été filmées.

Title page of issue/
Page de titre de la livraison

Caption of issue/
Titre de départ de la livraison

Masthead/
Générique (périodiques) de la livraison

Additional comments: /
Commentaires supplémentaires:

Pages 780, 784-785, 788-789 are incorrectly numbered pages 78, 789, 788, 785, 784

This item is filmed at the reduction ratio checked below/
Ce document est filmé au taux de réduction indiqué ci-dessous.

10X	14X	18X	22X	26X	30X
<input type="checkbox"/>	<input type="checkbox"/>	<input type="checkbox"/>	<input type="checkbox"/>	<input checked="" type="checkbox"/>	<input type="checkbox"/>
12X	16X	20X	24X	28X	32X

UNION BANK OF CANADA.

HEAD OFFICE, - QUEBEC.
 CAPITAL PAID UP - - \$1,200,000
 RESERVE FUND - - - 150,000

DIRECTORS:
 ANDREW THOMPSON, Esq., President. E. J. PRICE, Esq., Vice-President.
 Hon. Thos. McGroovy, D. C. Thomson, Esq., E. Giroux,
 Esq., E. J. Hale, Esq., Sir A. T. Galt, G.C.M.G.
 E. E. WEBB, Cashier.

F. L. PATTON, Manager, - - WINNIPEG.

BRANCHES.
 Alexandria, Ont. Quebec, Que.
 Iroquois, Ont. Smith's Falls, Ont.
 Lethbridge, N.W.T. Toronto, Ont.
 Merrickville, Ont. West Winchester, Ont.
 Montreal, Que. Winnipeg, Man.
 Ottawa, Ont.

Foreign Agents London The Alliance Bank (Lim-
 ited). Liverpool - Bank of Liverpool (Limited). New
 York - National Park Bank. Boston - Lincoln National
 Bank. Minneapolis - First National Bank.
 Collections made at all points on most favorable terms.
 Current rate of interest allowed on deposits.

OSLER, HAMMOND & NANTON

381 MAIN STREET,
 WINNIPEG.

Osler & Hammond,
 18 KING STREET WEST, TORONTO.
 (Members Toronto Stock Exchange)

**BROKERS,
 FINANCIAL AGENTS**

-AND DEALERS IN-
 DEBENTURES, LAND, &c.

Real Estate Bought and Sold. Money to Loan.
 E. E. OSLER. H. C. HAMMOND. A. M. NANTON.

GUY ROSS,

Investment Broker and Financial Agent.
 MUNICIPAL DEBENTURES NEGOTIATED

ROOM 19 CANADA CHAMBERS,
 5 ST. SACRAMENT STREET, - MONTREAL.

Tooke Bros.

MONTREAL,
 Manufacturers of the Celebrated Iron Frame Linnen and
 Perfect Fitting
SHIRTS AND COLLARS.
 Equal to hand-made and put up in any style. Sold
 by Wholesale and Leading Retail.
 Samples at Rooms 26 and 28 McIntyre Block P. O.
 179 WINNIPEG. Represented by E. A. DRISCOLL & CO.

The Barber & Ellis Co'y,

Nos. 43, 45, 47 and 49 Bay Street,
 TORONTO, Ont.

Manufacturers of ACCOUNT BOOKS,
 ENVELOPES, PAPER BOXES.

Dealers of all Grades of Staple Stationery.
 -DEALERS IN-

PRINTERS' SUPPLIES,
 BOOKBINDERS' MATERIALS AND
 BOXMAKERS' REQUISITES.

BANK OF BRITISH NORTH AMERICA.

INCORPORATED BY ROYAL CHARTER.
 Paid-up Capital.....£1,000,000 Stg.
 Reserve Fund.....£255,000 "

LONDON OFFICE—3 Clements Lane, Lombard Street, E.C.
 COURT OF DIRECTORS—J. H. Brodie, H. J. B. Kendall, John
 James Cater, J. J. Kingsford, Henry E. Jones, Frederick Labbock,
 Richard H. Glyn, Geo. D. Whitman, E. A. Hoare, G. Farrer
 A. G. WALLIS—Secretary.

Head Office in Canada—St. James St., Montreal.
 R. B. Grindley, General Manager. E. Stanger, Inspector.
 Branches and Agencies in Canada—London, Kingston, Fredericton,
 N. B., Brantford, Ottawa, Halifax, N. S., Paris, Montreal, Victoria,
 B.C., Hamilton, Quebec, Vancouver, B.C., Toronto, St. John, N.B.,
 Winnipeg, Brandon, Man.

H. M. BREEDON, MANAGER, MAIN STREET, WINNIPEG.
 Agents in the United States—New York—H. Stikeman and P.
 Brown, Esq. San Francisco—W. Lawson and J. C. Welsh, Esq.
 London—Messrs. The Bank of England—Messrs. Glyn & Co.
 Foreign Agents—Liverpool, Bank of Liverpool, Australia, Union
 Bank of Australia, New Zealand, Union Bank of Australia,
 India, China and Japan—Chartered Mercantile Bank of India, Lon-
 don and China, Agra Bank, (limited), West Indies Colonial Bank,
 Paris, Messrs. Marcuard, Krauss & Co., Lyons, Credit Lyonnais.

Bank of Ottawa.

HEAD OFFICE, OTTAWA.
 GEORGE BURN, - CASHIER.
 Capital paid up\$1,000,000
 Rest \$400,000

DIRECTORS.
 James MacLaren, Esq., President. Chas. Magee, Esq., Vice-President.
 Alex. Fraser, Esq. Hon Geo Bryson John Mather, Esq.
 Robert Blackburn, Esq. George Hay, Esq.

BRANCHES.
 Arnprior, Pembroke, Carleton Place and Koevatin, Ont.
 Winnipeg, Manitoba.
 AGENTS—Canada, Bank of Montreal, New York Messrs. W. Wat-
 son and A. Lang. London, Eng. Alliance Bank St. Paul, Merchants
 National Bank.

WINNIPEG BRANCH: 369 MAIN STREET:
 We receive accounts of corporations, manufacturers, firms and
 individuals on favorable terms.
 Interest allowed on deposits.
 Sterling and American exchange bought and sold.
 Drafts issued on all the principal points in Canada.
 Letters of Credit issued for use in Great Britain and elsewhere.
 Collections promptly attended to.
 F. H. MATHEWSON MANAGER

ALLAN, BRYDGES & CO.

BANKERS AND BROKERS,
 339 Main Street, Winnipeg, Man

Municipal, School and other
 Debentures negotiated.

SCRIP BOUGHT AND SOLD.
 Branch Office—CARBERRY, Man.,
 R. T. Rokeby, Manager.

INTEREST ALLOWED ON DEPOSITS.

Toronto Hide & Wool Co

Wholesale Dealers in
HIDES!

SHEEPSKINS AND WOOL
JOHN HALLAM

88 Princess St., WINNIPEG
 83 and 85 Front Street East, TORONTO.
 PROPRIETOR.

We will be in the market this season
 as usual for all classes of Wool, and
 are prepared to pay the highest mar-
 ket prices,

IMPERIAL BANK OF CANADA.

Dividend No. 30.

NOTICE is hereby given that a dividend at
 the rate of eight per cent. per annum upon the
 capital stock of this institution has been de-
 clared for the current half year, and that the
 same will be payable at the bank and its
 branches on and after Monday, the 2nd day of
 June next. The transfer books will be closed
 from the 17th to the 31st May, both days in-
 clusive. The Annual General Meeting of the
 Shareholders will be held at the bank on Wed-
 nesday, the 18th day of June next. The chair
 to be taken at noon. By order of the Board.

D. R. WILKIE,
 Cashier
 TORONTO, 24th April, 1890.

The Western Canada Loan & Savings Co.

CAPITAL, - - \$1,500,000.00.
 RESERVE FUND, - - \$850,000.00.

HEAD OFFICES Toronto, - WALTER S. LEE, Managing Director
 BRANCH OFFICES: Winnipeg, - - W. M. Fisher, Manager

Moneys advanced upon Farm and City Properties
 MORTGAGES, MUNICIPAL DEBENTURES & SCHOOL
 DEBENTURES purchased. Scrip held for use of Clients.
 Clients title deeds are not sent out of the Province but
 are lodged in the Company's vaults at Winnipeg, where
 they may be examined at all times. Agents at all prin-
 cipal points throughout the Province.
 For further information write to the Manager of the
 Winnipeg Branch.

THE SUN LIFE ASSURANCE CO'Y

OF CANADA.
 HEAD OFFICE: - MONTREAL.
 Capital and Assets - \$2,000,000.

Life and Accident Insurance. All Approved Forms.
 Unconditional Policies.
MONEY TO LOAN.
 Active Agents wanted in Manitoba and the
 Northwest Territories.

OFFICE 377 MAIN STREET, - WINNIPEG.
 A. L. ANDERSON, } GENERAL AGENTS
 THOMAS GILROY, }

Union Credit and Protective Association

O. E. COLLINS, MANAGER.
 For the Collection of Old and Worthless Debts
 anywhere in the Provinces of the Dom-
 inion of Canada or United States.
 489 MAIN STREET, - WINNIPEG.
 Business and Correspondence Solicited.

Mitchell Drug Company

WHOLESALE DRUGS,
 17 Owen Street, - - WINNIPEG.
 A Full Assortment of Drugs, Patent Medicines
 and Sundries at Lowest Prices.
 CORRESPONDENCE SOLICITED.

RUBLEE, RIDDELL & CO

Commission Merchants
 AND IMPORTERS OF
Green and Dried Fruits.
 15 OWEN STREET,
 WINNIPEG

HENDERSON & BULL,
WHOLESALE COMMISSION MERCHANTS
ESTABLISHED 1882.
41 BANNATYNE STREET EAST, WINNIPEG.
AGENTS FOR
THE CANADA SUGAR REFINING Co. Ld. Montreal
Sugars and Syrup.
THE CANADA JUTE Co., Ld. Montreal
Jute and Cotton Bags, Twines, Hessians, &c.
THE EDWARDSBURG STARCH Co., Montreal
THE DARTMOUTH ROPE WORK Co., Halifax
Binder Twine, Sisal and Manila Cordage.
MESSRS. CUDAHY BROS. Milwaukee
Smoked and Dried Meats, Mess Pork, Lard, &c.
THE SIMCOE CANNING COMPANY, Simcoe
Canned Goods.
THE LONGFORD M'FG COMPANY, Orillia
Pails, Tubs and Woodenware.
DUNBAR, McMASTER & Co. Ld. Gilford, Ireland
Gilling Nets and Twines.

AMES, HOLDEN & CO., MONTREAL.

The Ames, Holden Company,

WHOLESALE

Dealers in

BOOTS & SHOES,
33 Queen Street,

WINNIPEG

JAMES REDMOND,
WINNIPEG.A. C. FLUMERFELT,
VICTORIA.

**Thompson,
Codville & Co.,**

WHOLESALE GROCERS,

26 McDermott Street,

WINNIPEG.

J. S. PORTER

W. M. RONALD.

PORTER AND RONALD,
DIRECT IMPORTERS OF

CROCKERY

GLASSWARE

CHINA

LAMPS,

CHANDELIERS,

CUTLERY,

SILVER-PLATED WARE & FANCY GOODS

330 MAIN ST., WINNIPEG.

GROCERS, ATTENTION!
ASK FOR THE CELEBRATED
"Reindeer Brand"
CONDENSED MILK,
Condensed Coffee and Milk.
THE BEST IN THE MARKET.
For Sale By All Wholesale Grocers.
—MANUFACTURED BY THE—
Truro Condensed Milk & Canning Co. Ld
TRURO.
HENDERSON & BULL, Agents,
WINNIPEG.

MILLER, MORSE & Co

—WHOLESALE—

Hardware, Cutlery,
Guns, Ammunition,
Du Pont Gun Powder,
ETC.
Princess St., WINNIPEG.

J. H. ASHDOWN,

Wholesale Dealer & Importer of all kinds of

Shelf and Heavy Hardware,

STOVES AND TINWARE,

PAINTS, OILS AND GLASS,

RAILROAD and MILL SUPPLIES,

The Trade furnished with our Illustrated
Catalogue on application.

Corner Main and Bannatyne Streets.

WINNIPEG.

Cornell, Spera & Co.,

WHOLESALE DEALERS IN

Mens' Furnishings

SMALLWARES, ETC.

Our travellers are now out on sorting trip.
Stock is well assorted yet although many lines
are sold out. Special prices in some lines of
Goods.

Letter orders receive careful attention. Inspection
invited. Orders promptly filled.

27 Portage Ave. East,
WINNIPEG.

H. A. Nelson & Sons

TORONTO —AND— MONTREAL

DIRECT IMPORTERS AND
WHOLESALE DEALERS

Fancy Goods and Toys.

ALL THE NEWEST NOVELTIES

FROM THE

European and American Markets.

Represented in Manitoba, Northwest Ter-
ritories and British Columbia, by
W. S. CRONE.

Mackenzie, Powis & Co.

Have now in Store the most complete
range of

INDIAN TEAS

Bought at the late favorable turn in
the market.

BUYERS SHOULD EXAMINE.

Also on the way first crop choicest JAPANS
together with first crop CONGOUS.

Mackenzie, Powis & Co.,

WHOLESALE GROCERS.

Cor. McDermott & Albert Sts., WINNIPEG

CANADA

STAINED GLASS WORKS

Jos. McCausland & Son, Proprietors.

TORONTO, ONT.

Memorial and other Windows for
Churches and Public Buildings.

Household Stained Glass from Original
Designs.

British Plate Glass, Bent and Bevelled Glass,
ETC., ETC.

J. H. WOODS,

Sole Agent for Manitoba, N. W. T. and British Columbia.

Box 1318. WINNIPEG.

Redwood Brewery

**Fine Ales, Extra Porter
and Premium Lager.**

Most Extensive Establishment of
the kind in Western Canada.

ED. L. DREWRY,

PROPRIETOR,

WINNIPEG, - MANITOBA.

Highest cash price paid for good
Malting Barley.

The Commercial

A Journal of Commerce, Industry and Finance, especially devoted to the interests of Western Canada, including that portion of Ontario west of Lake Superior, the Provinces of Manitoba and British Columbia and the Territories.

Eighth Year of Publication.
ISSUED EVERY MONDAY
SUBSCRIPTION, \$2.00 PER ANNUM.

ADVERTISING RATES.

1 month weekly insertion.....	\$0 80	per line.
3 months, do	0 75	"
6 " do	1 25	"
12 " do	2 00	"

Transient advertisements, 10 cents per line each insertion.

Fine Book and Job Printing Departments.

Office, 4 and 6 James St East,

JAMES E. STERN,
 Publisher.

The Commercial certainly enjoys a very much larger circulation among the business community of the country between Lake Superior and the Pacific Coast, than any other paper in Canada, daily or weekly. By a thorough system of personal solicitation, carried out annually, this journal has been placed upon the desk of the great majority of business men in the vast district designated above, and including northwestern Ontario, the provinces of Manitoba and British Columbia, and the territories of Assiniboia, Alberta and Saskatchewan. The Commercial also reaches the leading wholesale, commission, manufacturing and financial houses of Eastern Canada.

WINNIPEG, MAY 12, 1890.

Manitoba.

Mr. Teddar is buying the hotel business of H. C. Clay, Rapid City.

N. H. Jackson has sold his drug store at Stonewall to A. R. Leonard.

Mr. A. Basler, of Rapid City, contemplates retiring from the hotel business.

Mr. Lillico, private banker, of Seaforth, Ont., talks of opening a branch in Brandon.

During the month of April 120 carloads of effects and 1,890 actual settlers for Manitoba arrived in Winnipeg.

H. Fryer, of the Portage, is building a hardware store in the town of McGregor, where he intends to enter business.

The Kerby house, Portage la Prairie, becomes vacant this month, Mr. Fletcher having decided to go into the implement business.

The contract for the stonework of Dr. Fleming's new block at Brandon has been secured by J. L. & Geo. Cook, of Newdale.

It is stated that a steam elevator with a capacity of 35,000 bushels will be built at High Bluff, Man., this summer by John Dilworth.

Mr. H. Nason, barrister, of Winnipeg, who had charge of Mr. Burnham's business at Emerson during his absence east, returned to Winnipeg last week.

J. M. Fitzgerald, of the Union Hotel, Portage la Prairie, has purchased Capt. Sheppard's interest in the Woodbine Restaurant and has assumed charge of it.

The estate of Samuel Hartford, of Neepawa, will be sold by public auction on May 12, at the office of the assignee, S. A. D. Bertrand. The estate consists of general goods \$5,420, fixtures \$135, book accounts \$1,500, building \$500.

A post office is to be established at Bredenboro, a station on the M. & N. W. R'y, between Churchbridge and Saltcoats, with Jas. J. Buchanan as postmaster.

It is stated that the plant of the St. Bonifacio woollen mill has been secured by a joint stock company at Rapid City, to which place it will be removed and operated.

The firm of H. W. Brown & Co., hardware merchants, Carberry, have been dissolved by the death of one of the partners, E. E. Eynon; Mr. Brown will continue the business under his own name.

Frank Lambert, of Portage la Prairie, shipped a car load of choice fat cattle to Messrs. Peebles & Braden, Winnipeg, on Wednesday, via N. P. & M. The first load shipped from this point over the route.

The firm of Martin, Curtis & Anderson, Portage la Prairie, will be strengthened from the 1st of May forward, by the addition of W. Beirsto. The new firm will be Martin, Curtis, Beirsto & Anderson.

R. D. Foley, of Manitou, is going to establish a live stock insurance company. Application will be made to the Provincial Government for a charter, and it is expected arrangements will be completed by the 1st of October.

The estate of J. W. Campbell consisting of stock and fixtures amounting to \$4,308.47, and book accounts and notes \$2,899.14, will be sold at public auction, on May 13th, at the office of the assignee, S. A. D. Bertrand, Winnipeg.

The prospects for a cheap fuel supply for Brandon for the season are bright. Mr. J. A. Christie will put on the market between 3,500 and 4,000 cords of spruce slabs, which makes excellent wood. This will be given to consumers at about \$2.00 per cord. By the time winter sets in the railways will connect the city with coal mines not more than 140 miles distant. This will reduce the price of coal one-half making a saving of thousands of dollars to our citizens and also making it possible for manufacturers to compete with eastern firms.

The Manitou Mercury says: J. D. McIntosh, who went east to confer with Messrs. A. Watts & Co., of Brantford, in connection with proposed improvements and additions to the new mill in course of erection at Manitou, returned home on Thursday, having been entirely successful in his mission. The institution will be fitted with five sets of rolls, and will be in every respect one of the most complete roller mills in the province. We understand Mr. McIntosh has purchased an interest in the mill and together with his brother, who thoroughly understands the roller process, will assume management of the business.

The annual meeting of the shareholders of the Commercial Bank of Manitoba took place in Winnipeg on Monday, May 5. Messrs. Duncan McArthur, Ralph T. Rokeby, A. Logan, J. Robertson and N. Matheson were re-elected directors, and the names of G. A. Strovel and Hon. A. A. C. LaRiviere were added to the board. In 1885 this bank commenced business as a strictly local institution, it had then a paid up capital of about \$100,000 and it pays an annual dividend of seven per cent. A "rest account" has been established by its shareholders of \$10,000, of which \$15,000 has been added this year, and the increase in the paid up capital has made it about \$350,000. A branch has been opened at Portage la Prairie and one at Morden and Minnedosa.

A public meeting was held on May 7, in the city council chamber, in the interests of the proposed Industrial Exhibition to be held at Winnipeg. About eighty prominent citizens were present, the chair being occupied by Mayor Pearson; C. N. Bell acting as secretary. The directors recommended by the sub-committee were accepted, namely: Mayor Pearson, Alderman Wolf, Black, Mather and Taylor; Messrs. R. J. Whitla, J. H. Ashdown, N. Bawlf, J. H. Brock, E. L. Drewry, J. H. Housser, S. Nairn, M. Bull, J. H. Fairchild, P. C. McIntyre, Wm. Risk, G. R. Crowe, G. F. Galt, Alexander Macdonald, R. Strang, W. Brydon, Alexander Brown, W. S. Grant, Archibald Wright and Isaac Campbell. The suggestion of Mr. Scarth that the Western Territories be incorporated with Manitoba, was adopted. It was resolved to hold a meeting of the provincial directors on Thursday evening at 8 o'clock in the city council committee room.

Alberta.

T. F. Kirkham, stoves and tinware, Lethbridge has been sold out.

F. W. Padmore, of Edmonton, sold \$800 worth of furs to the H. B. Co., last week.

The Royal hotel at Calgary has changed hands. Ingram & Clark being the proprietors now.

The rate of assessment in East Edmonton school district for the current year is 3 mills on the dollar.

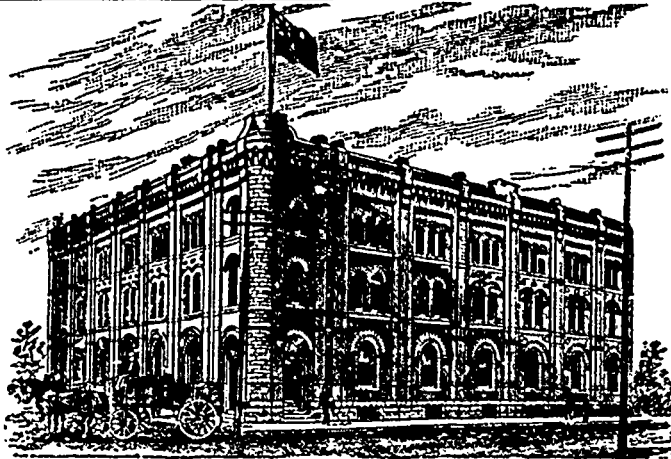
James D. McGregor, of Brandon, is in Windsor, Ont. He intends to bring out 500 young steers to put on a ranche near Calgary.

The total number of live stock on the ranges of Alberta and Assiniboia is estimated at 106,963 cattle, 13,322 horses, and 44,822 sheep.

The Edmonton Bulletin says: The Northwest Government has in view a scheme of immigration, and in aid of that scheme proposes to publish a hand book of the Northwest. A circular has been forwarded to the several districts asking for information, which information is to form the basis of the book.

Sir John Macdonald has given notice that he will ask the House to sanction the agreement with the Calgary & Edmonton railway company to enable it to construct its road at once. The agreement is the same as that entered into with the Regina & Long Lake railway company whereby the government pays the company \$80,000 per annum for 20 years for the transport of men, supplies, material and mails.

The Saskatchewan Herald lately gave the following regarding the gold fields of Alberta: "It is not generally known that gold is one of the products of the prairies, though washing for gold has been carried on on the North Saskatchewan river for years. The Edmonton Bulletin says: It is estimated that last season between \$15,000 to \$20,000 worth of gold dust was taken from the Saskatchewan, of which about \$6,000 was taken from the immediate vicinity of Fort Saskatchewan. Several hundred dollars also were taken from the McLeod river, a tributary of the Athabasca, about 125 miles west of Edmonton. The gold of McLeod is in even lighter flakes and of a lighter yellow color than the gold of the Saskatchewan. The skimmings of its bars are fairly rich but it does not promise as permanent diggings as the Saskatchewan."

GOODS SOLD TO THE
TRADE ONLY.GOODS SOLD TO THE
TRADE ONLY.

G. F. & J. GALT,

DIRECT IMPORTERS

TEAS, SUGARS, WINES, LIQUORS and GENERAL GROCERIES

CORNER PRINCESS AND BANNATYNE STREETS, WINNIPEG, MANITOBA.

Eastern Business Changes.

ONTARIO.

Booker Bros., tins, Stouffville, have assigned.
Thos. Shea, furniture, Toronto, has assigned.
T. H. Bleecker, hotel, Trenton, has assigned.
Geo. Beemer, hotel, St. George, has sold out.
Jno. Rogers, stationery, Toronto, has sold out.
C. H. Ecklin, general store, R. Ney, is selling out.
Cajeton Sauve, general store, Curran, has assigned.
Michael Ward, hotel, Smiths Falls, has assigned.
Jno. Hartwick, jr., tailor, Ridgetown, has assigned.
S. J. Potter, barber, etc., Campbellford, has sold out.
J. G. Carey, carriagemaker, Hastings, has assigned.
Michael Sullivan, merchant, Peterboro, has assigned.
T. T. Lintott, merchant, S. Walsingham, has assigned.
Mrs. Mary Butler, publisher, Stratford, has assigned.
Wm. Grundy jr., carriages, Lucknow, is selling out.
W. Malcolm, plumber, Belleville, is burnt out; insured.
J. C. Raham, carriages, Uxbridge, is offering 50c on the \$.
Wm. Gibson & Co., shingle mill, Powassen, have dissolved.
J. W. Alderson, general store, Desert; stock sold at auction.
L. Black & Co., optician, Windsor, have sold out this branch.
Henry Smith, hotel, Talbotville, is burnt out; insured for \$1300.
E. M. Bee, general store, Leamington, has retired from business.
Michael McGuire, grocer, St. Catharines, has advertised stock for sale.
R. B. Smith & Co., dry goods, Goderich; stock will be sold at auction.
George Teal, blacksmith and wagons, Ridgeway, is gone out of business.
E. R. Johnston & Co., gents furnishings, Toronto; stock sold at 46c in the \$.
The following were burned out on April 22,

at Powassen: Wm. Gibson & Co., shingle mill; Jno. Clark, sawmill.

H. E. Clark & Co., manufacturers of trunks, etc., Toronto, have dissolved. The retail business will be continued under former style, and the wholesale business under style, The M. Langmuir Mfg. Co. of Toronto, Ltd.

QUEBEC.

J. H. Rafter, clothing, Montreal, has assigned.
L. Lupien, general store, St. Ursule, has assigned.
Hyacinthe Legault, trader, Montreal, has assigned.
P. Massicotte, general store, St. Luc, has assigned.
E. F. Bouchard, general store, Waterloo, has assigned.
Arthur Laurent, dry goods, Sherbrooke, has assigned.
Craik & Boa, milk, Sault au Recollet, have dissolved.
W. Meloche & Co., butchers, Montreal, have dissolved.
Wm. Bouchard, general store, Chicoutimi, has assigned.
David Ethier, general store, St. Eustache, has assigned.
Wm. Murray & Co., jewelers, Montreal, have assigned.
Phillips & O'Sullivan, plumbers, Quebec, have assigned.
Thomas Styles, hotel, Montreal, is retiring from business.
Mrs. Benard, hotel, Blue Bonnets, advertises hotel, etc., for sale.
C. Martineau, general store, St. Felix de Valois, has assigned.
Thomas Doherty & Co., wholesale teas, Montreal, have dissolved.
Perron & Charbonneau, plasterers, etc., Montreal, have dissolved.
J. B. Perrault, general store, St. Anne de la Perade, has assigned.
Andrew Robertson & Sons, insurance agents, Montreal, have dissolved.
L. Blanchet & Co., manufacturer of shoes, Montreal, have dissolved.
C. Perreault & Frere, contractors, Montreal. Z. Perrault admitted partner and style changed to Perrault & Co.

WHOLESALE JEWELER.

Manufacturer and Importer of

Watches, Diamonds,

Jewelry, Clocks, Etc.

Tools, Material,

Etc., Etc.

Prices guaranteed as low as any House in Canada. Write for quotations. Call and see us when in the City.

433 and 435 MAIN STREET.

W. F. DOLL.

James Steele, furniture, Montreal. Stock damaged by fire and water.

C. O. Beauchemin & Fils, wholesale books, etc., Montreal, have dissolved.

Costigan & Oakley, manufacturers of letter files, etc., Montreal, have dissolved.

J. D. Nutter & Co., manufacturers of packing boxes, etc., Montreal, have dissolved.

NOVA SCOTIA.

M. E. LeBlanc, general store, Clarks Harbor, has assigned.

McGregor & Co., general store, Westville, have dissolved.

Isaac Spicer, planing mill, Hantsport; removing to Upper Falmouth.

NEW BRUNSWICK.

Geo. Guerette, hotel, Edmunston, has assigned.

Wm. Dobson, general store, Dorchester, has sold out.

Fred Tennant, restaurant and confectionery, Moncton, has sold out.

Peter Clair, general store and hotel, St. Francis, has assigned.

R. Swim & Son, general store and lumber, Doaktown, have dissolved.

W. W. Short & Co., shingle mill, Red Rapids Bridge; mill burned, insured \$1,000.

St. Andrews Canning Co., sardines, St. Andrews, is burnt out; insured for \$2,500.

Lumber Cuttings.

The *Mississippi Valley Lumberman* says that if the present dry weather continues, the Minneapolis mills will cut a good deal less than 500,000,000 feet this year.

The *Mississippi Valley Lumberman* of Minneapolis says: "The property near Rat Portage which originally belonged to Dennis Ryan and W. J. Maccauley, together with a large amount of stampage on the Minnesota side along the Big Fork and the Little Fork rivers is being offered for sale. Mr. Ryan is another of the capitalists who has dabbled in lumbering with out making it so profitable as to be disposed to continue the business. But if Minnesota lumbermen can pay the duty and ship lumber across the line into Manitoba, there ought to be money in operating a mill on Canadian soil, making lumber from logs admitted duty free."

W. D. PETTIGREW & CO.

WHOLESALE

—DEALERS IN—

Plaster of Paris,
Plasterer's Hair,
Wheelbarrows

SEND FOR PRICES

528 Main Street,
WINNIPEG.

STEWART HOUSE

COR. MAIN & ELLIS STS., MANITOU, MAN.
First-Class in every respect! Re-fitted! Re-furnished
Good Table! Good Rooms! Three best Sample Rooms
in the Province.

ROUNTREE & CONNOR, Proprietors.



LAKE OF THE WOODS MILLING CO.

The most perfect Flouring Mill in Canada. CAPACITY 1,600 BARRELS A DAY.

Barrel Factory at the Mill and Grain Storage Capacity of 550,000 bushels in addition to which a system of handling Elevators are now being constructed throughout the Northwest.

All Grades of **HARD WHEAT FLOUR** in Barrels and Bags.

FOR QUOTATIONS AND OTHER INFORMATION APPLY TO THE MILLS,

KEEWATIN, - ONTARIO.

THE DARTMOUTH ROPE WORK COMPANY

HALIFAX, Nova Scotia.

THE LARGEST CORDAGE FACTORY IN THE DOMINION.

Manufacturers of **CORDAGE** of Every Description.

ALSO SOLE MANUFACTURERS OF THE CELEBRATED

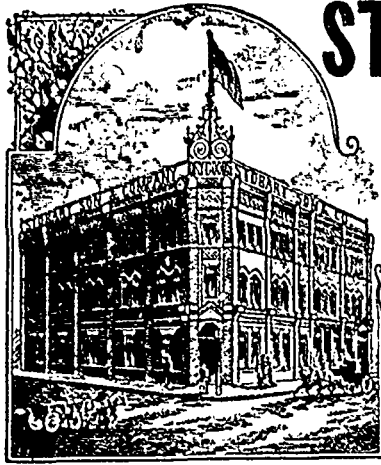
Blue Ribbon Binder Twine

Head Office: HALIFAX, N.S.

SOLE AGENTS FOR MANITOBA AND NORTHWEST:

HENDERSON & BULL,

41 Bannatyne Street East, - WINNIPEG.



STOBART, SONS & CO

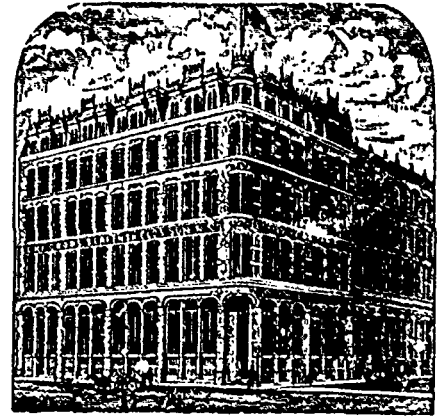
WINNIPEG, Man., and LONDON, Eng.

Spring Goods Now all to Hand.

Special values in Prints, Linens, Shirts, Gingham, Seersuckers, Dress Goods, newest shades, Embroidered Dress Robes, New Bordered Dress Goods, Scotch Tweeds and Worsted all at old prices. Parasols and Umbrellas, Embroidered Lawn Flouncings, Silk and Kid Gloves, Silk and Cotton Hose, Men's & Hose in Cotton, Lielo and Merino, New Garibaldiies in Cotton and Silk in all the new colorings, and a full stock of Smallwares and Gents' Furnishings.

Immediate Delivery can be Given of above Goods

WE DES TO SOLICIT A TRIAL.



S. GREENSHIELDS, SON AND CO.,

GENERAL

DRY GOODS,

17, 19 & 21 Victoria Square and 730, 732, 734 and 736 Craig Street, MONTREAL

Complete Set of Samples with

C. J. Redmond,

Also with Donaldson's Block, WINNIPEG
Wm. Skene, Van Horne Block, Vancouver, B.C.

Standard OIL Company

(UNITED STATES)

The Best Lubricating and Illuminating Oils Manufactured.

74° Deodorized Gasoline for Stove Use of the best and only reliable article made.

ALL PRODUCTS OF PETROLEUM IN STOCK.

D. WEST, Agent, Office: Western Canada Loan Building.
Room 8, Corner Portage Avenue and Main Street, WINNIPEG.

JAS. McCREADY & CO.,

WHOLESALE

Boot and Shoe Manufacturers, MONTREAL.

SAMPLE ROOMS, 496 MAIN ST. WINNIPEG
W. WILLIAMS, AGENT.

MILLS & McDUGALL, MONTREAL.

CANADIAN WOOLENS, IMPORTED WOOLENS AND TRIMMINGS.

Represented in Manitoba, Northwest and British Columbia by Mr. G. H. SIMPSON.

GOLD, WHALES & HONEY.

Honey in Manitoba, Whales in Hudson's Bay, Gold in British Columbia, And rich nuggets all through

The Colonist.

A mine of curious and interesting reading. Have you seen it? A 32-page illustrated magazine on fine paper. A perfect guide to Western Canada from Lake Superior to the Pacific Ocean.

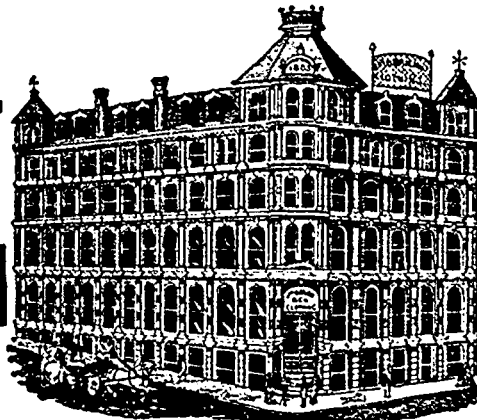
SEND TEN CENTS FOR SAMPLE. STAMPS TAKEN. Address:—THE COLONIST, Winnipeg, Can.

Jas. O'Brien & Co.

—MANUFACTURERS OF—

CLOTHING

Montreal and Winnipeg.



HEAD OFFICE AND MANUFACTORY: VICTORIA SQUARE, - MONTREAL.

OGILVIE MILLING CO'Y, WINNIPEG.

REGISTERED BRANDS:

Hungarian and Strong Bakers' Flour

—DEALERS IN ALL KINDS OF—

GRAIN AND FEED.

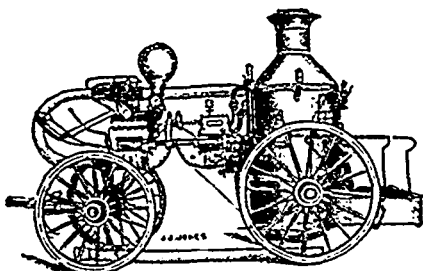
MILLS:

	DAILY CAPACITY	BY CAPACITY
ROYAL—Montreal	1800 Barrels	POINT DOUGLAS—Winnipeg 1000 Barrels
GLENORA " "	1200 " "	SEAFORTH—Seaforth, Ont. - 300
GODERICH—Goderich, Ont.	1000 " "	

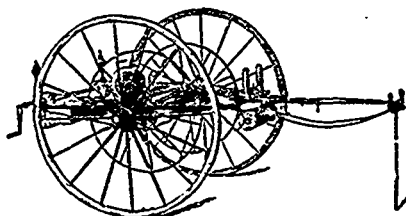
Waterous Engine Works Co.

(LIMITED)

WINNIPEG, - MANITOBA.



NO. 1.



NO. 2.

Steam Fire Engine AND SUPPLIES.

No. 2 Size arranged to draw by hand. Especially adapted for Towns and Villages.

The Commercial

WINNIPEG, MAY 12, 1890.

DEVELOPING THE WEST.

The activity shown all along the line this season in the development of Western Canada must be very gratifying to those who have their interests centred here. Coming after a rather poor crop year throughout a large portion of our prairie country, this activity will be especially welcome. The work going on in all directions will very materially assist in tidying over and enlivening what would otherwise be a close season commercially.

The activity referred to is principally shown in the direction of railway construction, and it is therefore of a very important nature. Railways are the very first requisite of a new country. Settlement and development cannot go on without railways. In this western world it has been shown that railways must precede, and not follow settlement. Whether it be mining, lumbering, agriculture, or any other resources for which a region is principally noted, railways are necessary before this latent wealth can be developed to any extent. Railways above all things are what the country needs, and when all have these, development in other directions is sure to quickly follow.

This activity in railway construction is not confined to one or two districts. All Western Canada, from Lake Superior to the Pacific, is sharing in the general development. In the Port Arthur district, immediately west of the lake, an important railway is under construction, which is intended to assist in the development of the great mineral wealth of that locality.

Coming westward to Manitoba there is unusual briskness in railway work for this season of the year. Work has already been begun at several points, and a number of other enterprises are likely to be started soon. Railway work is also going on in the Territories, and the season promises to be the most important one for the Territories in the matter of railway construction since the building of the main line of the Canadian Pacific, in 1882 and 1883. In British Columbia there is also unusual activity this year. Important new work has already been commenced, in the direction of developing the rich interior of the Pacific province, and the year 1890 promises to inaugurate a new era in the history of the province, and one of more rapid development especially in the mineral districts. All these railway enterprises under construction in one year will give employment to thousands of men, and renders it certain that there will be no scarcity of work for all who are anxious to find employment. In fact the demand for labor will be in excess of the local supply, rendering it necessary to bring in men from outside. The amount of work going on, and the great expenditure necessarily involved in this work, should materially assist in livening up business. But these railway enterprises are chiefly important for their permanent value to the country, and not for the expenditure during construction.

A brief reference to the principal enterprises in hand will show the general activity in railway circles in Western Canada this year. The railway under construction in the Port Arthur district, called the Port Arthur, Duluth and Western, has already been mentioned. In Manitoba the Canadian Pacific is early in the field this year prosecuting new work. The Souris Branch, running in a south-westerly direction from Brandon, which was put under construction last fall, is being continued. The short section of the road ironed last year is being put in shape for train service, and it is expected the road will be completed to the Souris coal region before winter. The Manitoba Southwestern, which forms a portion of the Canadian Pacific system, is also to be extended westward from Glenboro to form a junction with the Souris branch at the town of Souris. Surveys have already been made this spring for this extension. It is also expected that the Pembina Mountain branch of the Canadian Pacific will be extended westward to form a junction with the Souris branch. The advantage of connecting these roads with the Souris line is, to enable the direct shipment of coal from the mines to all points on the road. The opening of the coal mines will be a great boon to the country. It will mean the saving of hundreds of miles in the shipment of coal, with, it is hoped, a corresponding reduction in prices.

The Northern Pacific & Manitoba Railway have commenced construction on the Morris-Brandon line. This important road will be completed into Brandon during the present month, and within a short time that busy western city will have another railway outlet. It is not yet known what other work may be undertaken this year by the N. P. & M. Company, but it is expected some further extensions will be made.

Work has also been commenced on the Great Northwest Central for the completion of the portion of the road under construction last fall. It is stated that the eastern end of the road will be extended into Brandon, and plans have been prepared for bridging the Assiniboine river to allow of the road being brought into that city. It is expected that this road will be extended westward this year from fifty to one hundred and fifty miles. A train service over the first fifty miles will soon be established, and surveyors are in the field locating the road beyond the present end of the track.

The Manitoba Northwestern, which has had its eastern terminus at Portage la Prairie, has recently made arrangements to run trains into Winnipeg, over the Canadian Pacific. This will be an advantage to the towns along the line, as soon as the expected changes are made in the mail service. The Manitoba & Northwestern Company will do some new work in Manitoba this year, in the shape of a branch road which will be built from Westbourne to Lake Manitoba. There is a wide stretch of navigation on Lake Manitoba, and an important trade is developing on the Lake, which will be facilitated by the building of this branch railway. Some work will probably also be done in extending the main line of this company this year.

The Duluth & Winnipeg is an important

railway which is looked forward to with interest. The principal portion of this road is in the State of Minnesota. Construction on the road was pushed vigorously last year, and a considerable mileage has been completed. The latest report is that the road will be completed to the Manitoba boundary this year, where connection will be made with a road from Winnipeg. There are three charters to build from Winnipeg to the boundary, in the direction in which the Duluth & Winnipeg is to come in. Two of these lines were actually put under construction last fall, and one of the companies—the Winnipeg & Southeastern—has recently announced that work will shortly be resumed on the line.

Another Manitoba railway which there is good reason to believe will be built this year is a short line to the coal mines in the Turtle Mountain country. This company has received important aid from both the Provincial and Dominion Governments, and it has recently been announced that financial arrangements have been made to build the road. It will open up another coal district, about five hundred miles nearer to the centre of population than the present source of supply. This is sufficient to show the value of the road.

These are the principal railway enterprises in Manitoba. Regarding the Hudson's Bay railway, the people are in a state of expectancy. The announcement of the Dominion Government concerning this road is eagerly awaited, and upon it the immediate future of the road will depend.

In the Territories new work has been commenced on two important lines. The road from Regina to Prince Albert, which was commenced last year, is being pushed forward with a force of men, which will be increased from time to time. This road, which is to be the first to penetrate the great Saskatchewan country, will be completed by next fall.

The Alberta Railway & Coal Company, formerly the N. W. C. & N. Co., and known for short as the Galt road, has commenced preliminary work on the line from Lethbridge to the Montana boundary, and the road is to be completed by September next. The road will connect at the boundary with a railway now being built northward from Great Falls, Montana. The construction of this road will open up a market in Montana for Lethbridge coal. Preparations are being made for working the mines on a much larger scale, railway workshops are being erected, and Lethbridge promises to become a point of industry in the near future. It has also been announced that the A. R. & C. Co. will survey a line westward from Lethbridge, via Macleod, through the Crow's Nest Pass in the mountains, with a view to future extension in that direction.

The Calgary & Edmonton railway is another enterprise which has recently come into prominence through the action of the Dominion Government in granting substantial aid to the road. Last week at Ottawa, it was announced that the Government granted this road a subsidy of \$30,000 per year for twenty years, in addition to the land grant of 6,400 acres per mile. This subsidy will apply only to the portion of the proposed road between Calgary and Edmonton. The promoters have a southern extension

in view also. Surveyors have been sent out, and it has been announced that the road would be completed to Edmonton next year. This road will open up a splendid country, and will afford the northern settlements in Alberta with a means of connection with the outside world. The distance from Calgary to Edmonton is something over 200 miles, about half of which will be built this year.

In British Columbia the Provincial Government has recently granted substantial aid to several proposed railways. British Columbia is likely to have connection with the United States by two railways before the close of the present year. The Seattle, Lake Shore and Eastern, which is being built in a northerly direction through the State of Washington, will form a junction with the main line of the Canadian Pacific, at Mission, a station east of Vancouver some distance. A bridge is being built across the Fraser river at that point, by the Canadian Pacific to enable this connection to be made. Another railway being built in a northerly direction through Washington, is expected to reach New Westminster during this year. Considerable work has been done on this road, on the Canadian side of the boundary, under the name of the New Westminster Southern. In the interior of the province the Canadian Pacific has undertaken the construction of an important road, which will connect with the main line at Sicamous. This road is designed to open up a rich mineral country, and it is intended as a link in a system of railways for the region, connecting also valuable navigable water stretches. Work is now being pushed by the Canadian Pacific in this region, and an active movement in the development of the mineral wealth of the Kootenay country is expected to follow the opening of the district to railway communication.

PROGRESS IN THE EAST.

We are so accustomed in this province to look for progress in the country lying west of the Red River Valley, that we are liable to overlook the progress that is being made in a section of country immediately east of us, which if in the limits of the old province of Ontario, is as much part and parcel of the Great Northwest, and inseparably linked with it in a trade sense, as if it were a portion of Manitoba. Such indeed is the relation to us of the country as far east as the Lake of the Woods region, and probably one of the reasons of our overlooking it as much as we do is the fact, that its resources are so unlike our own, being in no sense of an agricultural character. Still the development of its resources are so closely linked with, and dependent upon the growth and progress of Manitoba and the portion of the Territories immediately west of the province, that without a market here, the Lake of the Woods country would still be little more than a fishing and hunting ground for the Indian.

Six or seven years ago, when the lumber trade of the Northwest was entering upon that period of depression and demoralization, which only ceased some three years ago, Rat Portage was a village of some six or seven hundred people, made up in a large measure of mining adventurers, who were figuring out imaginary

fortunes from gold mines supposed to be located around the lakes, but which were invariably as purely imaginary as the fortunes they were expected to realize. Now the village has grown into a lively town of at least fifteen hundred population, while at Keewatin only three miles distant, a town of about half that size is now to be found. These are the first evidences of progress which impress themselves upon the visitor who has been absent for a number of years, and when it is taken into consideration that all this progress has been made since the completion of the C. P. R. road to Montreal, and the great bulk of it during the past three years, during which a revival of the lumber trade has been going on, it must be admitted that the Lake of the Woods region has been making lately almost as much solid growth as any part of the Dominion.

Among the most valuable industries added to those already in the district of late years is the Lake of the Woods flouring mill, an institution which has to be seen to be appreciated. For a perfectly constructed and fitted mill it has no superior in Canada, nor indeed on this continent, although there are some larger in Minneapolis. It has a capacity of 1,500 barrels of flour per day, and is constructed specially for the milling of the hard wheats grown in Manitoba and the Northwest Territories.

The back-bone of progress in the Lake of the Woods country is the lumber industry, and being a timber country as yet comparatively undeveloped, the field for growth is still practically unlimited. There are now at work seven mills, two of which, the Keewatin Lumber Company and Messrs. Dick, Banning & Co., are located at Keewatin, and the joint cut of these two concerns promises to be little short of twenty-five million feet. At Norman there are three mills, Messrs. Kennedy & Cameron, the Minnesota and Ontario, and Bulmer's mills. At this point the joint cut for the season promises to be above 30,000,000 feet. Then at Rat Portage are the Western Lumber Company, and Messrs. Ross, Hall & Brown, who will probably add twenty million feet more to the aggregate cut, or giving a probable cut for the season of nearly 80,000,000. Some parties who ought to be posted on this subject predict a higher aggregate cut, but the above is probably what will be the result of the season. The whole of this output must find a market in Manitoba and the Northwest Territories, and if the crop outcome is as good as the prospect at seeding time outlines, there will be an open market for all this lumber.

When we add to the above facts and figures the reliable statement that the lumber industry will employ during this summer over four hundred hands, we can see that it is in every sense the back-bone of progress in the Lake of the Woods district.

There has been for many years a belief in the minds of many, that the rocks around and on the islands in the lake are rich in gold producing quartz, and assays of samples taken from different localities have given most astonishing results. There has been, however, a combination of circumstances, which has given many staggering blows to mining development. In the first place the dispute between the

Dominion and Ontario Governments as to the right of administering the lands, timber and minerals of the country, has effectually blocked the securing of titles to mining claims, and now that this difficulty is cleared away, a fresh one, in the shape of leases of the islands granted to lumber companies, blocks mining except on the main land. Thus capital for mining development, if it was likely to flow into this country has been scared away, as has been other necessities for progress, by the incapacity or blundering, or perhaps the rascality of cliques of political tricksters, who are sometimes dignified with the title of statesmen.

Another barrier to mining progress has been the abortive and dishonest efforts made in that direction in the past. The swindling snide mining companies of 1883, into which the spare funds of not a few tenderfeet were dropped, have not been forgotten, while the persistent efforts of an army of exploring loafers to get capitalists into their bubble schemes, "on the ground floor" of course, have made men suspicious and mistrustful, who might otherwise have invested in mining work.

The day of the explorer loafer is now near an end, and the erection of reduction works at Rat Portage, which are now almost ready for work, brings the opportunity for practically testing mining in the district. If after one year these works are being run profitably, they will furnish a proof that mining as an industry, (if not as a field for adventure), can be made a success in the Lake of the Woods country.

To speak of the Lake of the Woods as a summer resort is a little out of the range of a commercial journal. Still we cannot but wonder why people here rush to the Atlantic and Pacific shores or to the southern resorts, when at our own doors can be found a fairy land, as beautiful and ever changing in view as any pantomimic transformations can produce. However we in Manitoba are interested in the industrial growth of the Lake of the Woods country, for that depends mainly upon our own growth as a province. The connection however is not a parasitical one, for in that country we have quite a wide market, in which there is no local food supply, and which must draw the same from here.

LABOR TROUBLES.

It seems as if the labor troubles of this continent were about to assume proportions likely to seriously disturb society in many quarters. The following from *Bradstreet's* of May 3rd, gives an index to how matters really stand:—

"Special reports to *Bradstreet's* from 110 cities, given on another page, illustrate the widespread character of the industrial disturbances on May 1 as a means of securing fewer hours of work daily, or higher wages. Reports from 46 cities show a total of 51 strikes and 12,989 employees involved on May 1. This record as to the number of strikes has never been equaled heretofore, and the present month promises a total to exceed that for April, which shows a larger number of strikes than any preceding month on record. Later advices (to Friday evening) indicate that the earlier conservative feeling existing in

G. F. STEPHENS & CO.

—MANUFACTURERS OF—

Stephens' Pure Liquid Colors—Various Shades for Interior and Exterior House Painting.

Stephens' Prepared Carriage Paints—In Scarlet, Black and Maroon. These Paints dry with a Rich Gloss and do not require Varnishing.

Stephens' Elastic Enamel—For Household Decorations such as Tables, Fancy Chairs, &c., in a large number of delicate shades.

Stephens' Pure Oxide Paints—(Almost everlasting)—For Elevators, Granaries, Roofs and all Rough Surfaces exposed to the Weather.

—IMPORTERS AND JOBBERS OF—

Window Glass—Ordinary Glazing and Crystal Sheet. Single and Double Strength.

Heavy Polished Plate—Sizes in Stock from 44 to 96 inches Wide.

Ornamental Glass—In almost Endless Variety.

A full Stock of Painters' Supplies including Dry Colors, White Lead, Varnish, Brushes, Etc. Artists' Oil Colors and Brushes.

Plaster Paris, Plasterer's Hair, Portland Cement, Rosin, Pitch, Etc.

MARKET STREET EAST, WINNIPEG.

Chicago has given place to a more radical one. As we go to press it is reported that 10,000 workers in the sash, door and blind factories of that city have struck, and that the total number of this class of strikers alone may equal 25,000. If this proves true, the total number of industrial employees idle on May 1, 59,000, will be further increased, making the grand total 69,000, with the probability that the actual number idle (and not reported) may increase this aggregate to 90,000 men."

It is a noteworthy fact that these labor troubles are as a rule worst in countries where high protective tariff exists; and it is a singular anomaly, that where a nation makes the greatest sacrifices, by taxing its consumers most heavily, to foster labor demanding industries, the struggle of the laborer for fair remuneration for his toil should be hardest, yet such is the case, and the reason is not hard to find. Nations fix tariffs for industries as a whole, forgetting that in the majority of cases, the industry sought to be protected embraces two discordant elements, capital and labor. The instances are few in which they are not discordant, for in all cases mistrust if not discordance exists. In any case capital can usually bring to bear the cunning, which will insure the lion's share of the tariff spoil, while labor may possess the ingenuity as well as the earning power. These however are no match for cunning in the struggle. Thus it is that no matter how valuable may be the skill of the laborer, his remuneration is seldom measured by its value, but invariably by what he and his family can live upon. Can it be wondered at, that thus gauged in remuneration the laborer should in return try to limit the hours he should work. To gain his end in such a way he can by united organization baffle even the cunning which cheats him out of his share in the gains national sacrifice would bring.

Looking at the present struggle from the above standpoint, it is not unnatural to expect that the cause of the strikers will receive not a little sympathy from unexpected quarters.

Manufactured Exports.

Upwards of 160 carloads of the Massey Manufacturing Company's harvesting machines have already been shipped this season to foreign countries. A large share of this went to Australia.

Wm. Ewan & Son, WHOLESALE CLOTHIERS,

650 Craig St. MONTREAL.

Represented by J. McLEOD, HOLIDAY & BRO., Winnipeg, Man.

SAMUEL HOOPEE, DEALER IN MONUMENTS, HEAD Stones, Mantle Pieces, Grates, Etc. Special designs furnished on application. Corner Bannatyne and Albert Streets, Winnipeg

Special Notice.

FOR SALE—A half interest in an old established Hardware Business in the City of Winnipeg. Annual turn-over about \$50,000; Stock about \$15,000; Best connection in the City. Satisfactory reasons given for disposing of my interest.

ADDRESS: A. B. C.,
THE COMMERCIAL,
WINNIPEG.

Canada is sadly in need of some manufacturers who can compete in a foreign market. The conflicting arrangements of a rascally tariff system, in which the protection of our industry is a tax upon the raw material of another, makes production at export prices a simple impossibility in nineteen out of twenty of those protected industries. It is pleasing to note such exceptions as the Massey Manufacturing Company.

Northwestern Ontario.

Algoma Advocate: W. Turner, P. C. Campbell, J. Dawson and W. A. Quibell have been elected directors in connection with the Sault water power.

W. P. Douglas, one of the chief promoters of the Kakabeka Falls Land and Electric company, arrived at Port Arthur on May 7th, from Philadelphia. He took a trip over the Port Arthur, Duluth and Western railway, and it is expected that work will be commenced on the Kakabeka branch of this railway at once, so that the company can go on with the contemplated improvements.

ROBINSON, LITTLE & CO.

—WHOLESALE—

DRY GOODS,

343 and 345 Richmond St.,
LONDON, Ont.

Complete range of Samples with Andrew Callender, McIntyre Block, Winnipeg.

J. F. EBY.

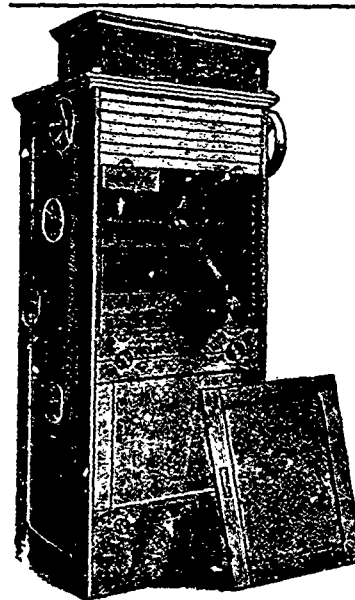
HUGH BLAIN.

Eby, Blain & Co. WHOLESALE GROCERS,

COR. FRONT AND SCOTT STS.,

TORONTO.

Represented in Manitoba and the Northwest Territories by JAMES DOWLER, 130 Donald Street, WINNIPEG.



BOYNTON GRAVITY SCALPER.
Can be seen in operation at the mills of Lignite Milling Company, Lake of the Woods Milling Company, Hudson's Bay Company, Portage Milling Company, Alexander, Kelley & Co., J. H. Fraser and all the leading mills in Minneapolis.

—APPLY TO—

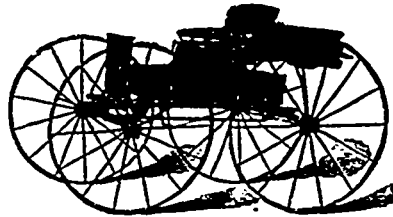
JAMES PYE,

218 Third Avenue South,
Minneapolis, - Minn.

CARRIAGE, WAGON AND BUGGY REPOSITORY

WAGON AND CARRIAGE WOODWORK, TOPS, TRIMMINGS, HARNESS, Etc.

Carriages,
Phætons,
Gladstones,
Buggies,



Democrats,
Runabouts,
Farm Wagons,
Buckboards, Etc.

The most complete Stock of every class of Wheeled Vehicles to be found in the Northwest.

Call and examine our Goods or send for Catalogue or Price List to our Warehouse.

R. BOCHRANE & Co.

39 and 41 Market Street East, - Winnipeg.

READ, PONDER AND INVESTIGATE. **MILLERS!** READ, PONDER AND INVESTIGATE

To the Millers of Manitoba and the Northwest:

GENTLEMEN: - The Hercules Manufacturing Co. of Petrolia, Ont., beg to announce that Messrs. Robert Muir & Co. of Winnipeg have been appointed our Agents for Manitoba and the Northwest, who are prepared to give estimates on all kinds of MILL MACHINERY manufactured by us, and also on the remodeling of old mills to our latest improved system.

THE COCHRANE ONE BELT DRIVE, CONTINUOUS TRAIN OF ROLLS, which are now at the head of all others. A saving of 50% in power doing 35% more work. Can not be put out of Train. A more even granulation, giving a larger percentage of Patent Flour, thereby increasing the capacity of the Bolts. This is the mill of the future; all others have to give place to it. Why spend you time and money on Rolls which the millers of the United States and Canada have tried and found wanting and are replacing with the COCHRANE ONE BELT DRIVE.

THE HERCULES WHEAT CLEANING MACHINERY - Guaranteed to do better work in ONE operation than any other will do in FIVE. Removes fuzz entirely from end of berry—something unattempted by any other Scourer.

THE HERCULES PATENT FLOUR DRFSSER and a full line of FLOUR MILL MACHINERY and MILLERS SUPPLIES.

Hercules Manufacturing Company,

Petrolia, - Ontario.

DAWSON, BOLE & Co.

(LATE OF REGINA.)

ARE NOW OPEN FOR BUSINESS AT

60 Princess Street, - Winnipeg.

In lines handled we are prepared to meet the best buyers in the country. During the month we will issue Complete Catalogue. In the meantime we are prepared to fill orders for nearly everything in the line of PATENT MEDICINES known to the Drug Trade.

In Heavy & Light Drugs and Drug Sundries we will be glad to quote prices to the Drug and General Store Trade

CIGARS AND TOBACCOS.

Will continue to receive our best attention. For several years we have been the largest dealers in these Goods in the West. The secret of our success in this department is "Good Value," "Despatch" and shipping only the brands ordered. We never ship "Something just as good."

We are Sole Wholesale Agents for S. Davis & Sons' "MAURICIO" and "TURKISH CAP" Cigars, long regarded in the West as the best value in the Market. Davis' other standard brands and leading lines of other prominent manufactures always on hand.

We handle nothing in either the Drug or Tobacco Departments we cannot get from first hands. Our Travellers are now on the road with Samples of Toilets, Toilet Soaps (over one hundred different lines), Cigars and Tobacconists' Sundries.

Our Shipper has instructions to ship all Goods on day in which orders are received. Telegraph, Mail and Telephone Orders Solicited.

Telephone No. 212.

DAWSON, BOLE & CO.

WINNIPEG MONEY MARKET.

Monetary affairs in the city have been running smoothly during the past week, with no marked feature in connection. Banks find there is a steady call for funds for mercantile business, but with funds from grain handling let free, there is no scarcity of resources to meet all regular demands, although the aggregate of funds now in use for mercantile discounts is unusually heavy for this time of the year. The discount rates still range from 7 to 8 per cent. for good to gilt edge trade paper. In real estate mortgage loans business is slower than it was a month ago, and the steady call for farm loans has eased off considerably until seeding is over. The loans on city property are few and are principally renewals. The rate of interest stands steady at 8 per cent. on farm loans, but much lower rates could be had for first-class city loans.

WINNIPEG WHOLESALE TRADE.

The wholesale trade of Winnipeg has been in rather a slow state during the past week. There has been about the usual volume of sales in lines of every day consumption, although the tendency has been to hold back in this respect, and to shorten credits as much as possible. In lines dependant on building and contracting the sales have also been of a normal volume; and accompanied by a better feeling. In season lines however business has been far from active. Weather has been altogether too cool to make any demand for spring sorts, while orders for fall samples have scarcely started to come in as yet, and there seems to be a desire on the part of both buyers and sellers to hold off fall purchases as much as possible. This feeling while hard upon the numbers of eastern men now out with fall and winter samples, is a healthy sign, which should bear good fruit before another spring comes around. The loudest complaint heard is in connection with collections. While there seems to be a little money in circulation in the city, there is great scarcity in the country, and the returns therefrom are anything but liberal and encouraging.

DRUGS.

Prices here are as follows: Howard's quinine, 60 to 75c; German quinine, 50 to 60c; morphia, \$2.25 to \$2.50; iodide of potassium, 4.25c to \$1.75; bromide potassium, 65 to 75. English camphor, 80 to 90c; glycerine, 30 to 40c; tartaric acid, 65 to 75c; cream of tartar, 35 to 40c; bleaching powder, per keg, \$6 to \$8; bicarb soda, \$3.75 to \$4.50; sal soda, \$2.50 to \$3; chlorate of potash, 25 to 30c; alum, \$4 to \$5; copperas, \$3 to \$3.25; sulphur flour, \$4.50 to \$5; sulphur roll, \$4.50 to \$5; American blue vitrol, 10 to 12c.

DRY GOODS.

None of the local houses have done much in pushing fall samples as yet, and the majority of them only start their men out for fall work this week. There has been very little call for sorts, as the weather has not been such as to create such calls. How fall samples will be received, remains to be seen, although a slow feeling is clearly foreshadowed. Retailers all over the province are holding stocks down to the lowest possible level, and are determined not to buy fall goods until a clearer prospect of the crop can be arrived at. On the other hand wholesalers have been receiving such poor cash returns, that they feel inclined to hold credits as short as possible.

FISH.

Oysters are now out of the market, while the variety of fresh sea fish is getting narrower. Salmon are quoted 15c, cod, 8c, and haddock, 10c per pound. Whitefish are quoted at 8c; jackfish, 1c, pickerel 3c; Lake Superior trout, 10c. finned haddies, 12½c per pound. Smoked white fish, 10c per pound; smoked gold-eyes, 40c per dozen; salt whitefish, \$5 per 100 pound keg.

DRIED FRUITS.

There is very little change in the situation since our last report, and the same firm feeling continues although there have been no advances as were predicted by some people. Prices are: California London layer raisins, \$3.00 per box, do. ½ boxes, \$1.00; Valencia raisins, \$2.70 to \$2.80 per box; Valencia layer raisins, \$3.00 per box; currants, 7c per lb.; dried apples, 7 to 7½c per lb., evaporated apples, 13½c; choice new Eleme figs in 10 lb. boxes, 16c per lb.; choice figs, 13c per lb.; fancy Eleme layer figs, 20 lb boxes, 18c per lb.; figs in 1 lb cartons, per doz., \$1.75; golden dates, in 50 lb. boxes, 9c per lb.; California evaporated fruit—apricots, 21 to 23c per lb.; peeled peaches, 27 to 30c per lb.; pitted plums, 14c; raspberries, 35c; French prunes, 10c per lb.; nectarines, 18 to 20c.

GREEN FRUITS AND NUTS.

There is scarcely a change to note, and the variety of goods on the market has not changed. This week Mediterranean fruit will be here and that will cause considerable change. Prices here are: Lemons, Messinas, 360 count, \$6.00; 300 count, \$6.50 per box. California seedling oranges, \$4.50 to \$5 per box; California navel seedless oranges, \$5.50 to \$5.75 per box; California blood oranges, \$7 to \$7.50 a box; Apples, \$7 per barrel for good stock Bananas, \$3.25 to \$3.75 per bunch. Comb honey 22c per pound. Maple sirup, gallon cans, \$1.25c each; maple sugar, 14 to 15c per pound. Nuts—S. S. Tarazona almonds, 20c per pound; Grenoble walnuts, 18c; Sicilian, filberts, extra large, 15c; peanuts, white Virginia, green, 15c; roasted, 18c; coconuts, per hundred \$9.00; hickory nuts 10c per pound.

GROCERIES.

The feeling is quiet in this staple branch, and there is no disposition on the part of wholesalers to force sales. On the contrary they are holding everything short by the head, and will not increase the volume of credit, which is now inflated. There are no changes in prices to quote. Sugars are if anything easier, while coffees maintain their high figures and firm tone. Prices here are:—Sugars, yellow, 6½ to 7c, as to quality; granulated, 7½ to 8; lumps, 9½ to 9½c. Coffees, green,—Rios, from 22 to 23c; Java, 25 to 27c; Old Government, 27 to 30c; Mochas, 32 to 35c. Teas: Japan, 23 to 46c; Congous, 22 to 60c; Indian teas, 35 to 60c; yound hyson, 26 to 50c. T. & R. tobacco, 56c per pound; lilly, 7s, 52c; diamond solace, 12s, 45c; P. of W., butts 47c, P. of W., caddies, 47½c; Honey-suckle, 7s, 55c; Brier, 7s, 53c; Laurel Bright Navy, 3s, 56c; Index d thick Solace, 6s, 48c; Brunnette Solace, 12s, 48c. McAlpine Tobacco Co's plug tobacco: Old Crow, 46c; Woodcock, 52c; Beaver, 63c; Jubilee, 60c; Anchon, 59c; cut tobacco. Silver Ash, 65c; Cut Cavendish, 70c; Senator, 80c; Standard Kentucky, light, 55; do dark, 80c. Special brands of cigars are quoted: Reliance, \$50; Gen. Arthur, \$50; Mikado, \$40; Terrier, \$30 per 1000. Mauricio, \$42.50; Soudan Whips, \$40.00; Turkish Caps, \$32.50; Commercial

Traveller, \$25. Lion "L" brand mixed pickles, in kegs, are quoted: Three gallons, \$2.50; do five gallons, \$3.50; do 10 gallon kegs, \$6.50.

HARDWARE.

This branch is still quiet, but is considerably disturbed over the uncertainty about freight rates from the east. With that trouble added to the general change and adjustment caused by the opening of navigation on the lakes, and the fact of a weak and declining iron and steel market in Europe, there is great scope for care and caution on the part of the wholesalers. Prices are: Cut nails, 10d, and upwards, \$3.50; I. C. tin plates, \$6 to \$6.50 as to grade; I. C. tin plates double, \$12.00 to \$12.50; Canada plates, \$4.25; sheet iron, \$4.00 to \$5.50, according to grade; iron pipe, net pieces, 1 inch, 11.20c; 1½ inch, 14½c; 1¾ inch, 19½c; 2 inch, 28c per foot; ingot tin, 32c per lb; bar tin, 33c per pound; sheet zinc, 8c per lb., galvanized iron, 23 guage, 8 to 9c lb; bar iron, \$3.60 per 100 lbs; shot, 6½ to 6½ per lb.; tarred felt \$2.40 to \$2.50 per 100 lbs.; barbed wire, 6½ nett.

LEATHER, LEATHER GOODS AND FINDINGS.

Quotations are as follows: Spanish sole, 24 to 28c; slaughter sole, 26 to 30c; French calf, first choice \$1 25 to \$1.50; Canadian calf, 75c to \$1 00; French kip, \$1 to \$1.10; B Z kip, \$5; Bourdon kip, 70c, slaughter kip, 55 to 65c; No. 1, wax upper, 40 to 45c; grain upper, 50c; harness leather, 26 to 29c for plump stock. English oak butts, 60c; buffe, 17 to 21c a foot; cordovan, 17 to 21c; pebble, 21c; colored linings, 12c; shoe uppers, from \$1.25 to \$2.75. Horse collars—Short straw, \$22 der dozen; long straw, \$33 per dozen; long straw bodies, \$22; Boston team (thong), \$27 per dozen.

LUMBER.

In this branch there has been some movement during the week, but the full volume of the season's trade has not been reached. Prices at the different mills in the Keowatin district are as follows:—Dimension: 2x4 to 12x12, 12 to 16 ft long, \$14; do. 10, 18 and 20 ft long, \$15; \$1 per M advance on each inch over 12in surface; 50c per M on each foot over the above lengths to 24ft long; \$1 per M advance on each foot over 24ft long; surfacing, 50c per M; surfacing and sizing, \$1 per M. Boards: 1st common, rough, \$16.50, dressed, \$17.50; 2nd common, rough, \$14, dressed, \$15; Culls, rough, \$10, dressed, \$11; 1st common, s'ock, 12in, rough, \$19, dressed, \$21; do. 8 and 10in, rough, \$18, dressed, \$19; 2nd common, stock, 12in, rough, \$16, dressed, \$17; do. 8 and 10in, rough, \$15, dressed, \$16; 10ft long and under, \$1 less per M. Shiplap: 10in, \$16; 6in, \$15.50; 8 and 10in flooring and siding at \$1 per advance. Siding, ceiling and flooring. 1st, 6in, \$29; 2nd, 6in, \$25; 3rd, 6in, \$21; 4th, 6in, \$18; 1st, 5in, \$29; 2nd, 5in, \$25; 3rd, 5in, \$20; 4th, 5in, \$17; 1st, 4in, \$29; 2nd, 4in, \$25; 3rd, 4in, \$19; 4th, 4in, \$16; \$1 per M advance for dressing on both sides; \$1 per M less for lengths 10 feet and under. Bevel Siding: No. 1, 1st siding, ½ in x 6 in, \$20; No. 2, 2nd siding, ½ in x 6 in, \$17. Finishing (1½, 1½ and 2in): 1st and 2nd clear, \$45; 3rd clear, \$40; selects, \$30; chop, \$25; 1 inch, 1st and 2nd clear, \$40; 3rd clear, \$32; No. 1 stock, \$35; No. 2 do. \$30; No. 3 do. \$25. Mouldings: window stops, per 100 ft: linal, \$1; parting strips, do, 60c; ¼ round and core, do., 75c. Casing: 4 in O G, per 100 ft linal, \$1.75; 5in O G, do, \$2.25; 6in O G, do, \$2.50; 8in O G, base, do, \$3.50; 10in O G, base, do, \$4.25. Lath, \$2. Shingles: No. 1, \$3; No. 2, \$2.50; No. 3, \$1.50; No. 4, \$1.

PAINTS, OILS AND GLASS.

There is no improvement reported in this branch. Business is still quiet, and seems slow to improve: Turpentine in barrels, inscribed gages, 75c per gal; turpentine, in barrels, guaranteed measurement, or in 5 gallon cans, 80c gallon; linsed oil in barrels, raw 77c; boiled 80c; benzine and gasoline, 50c; pure oxide paints, in barrels, 90c per gallon; coal tar \$6 a barrel; Portland cement, \$4.90 a barrel; Michigan plaster, \$3.40 a barrel, putty, in bladders, 3½c a pound, bulk in barrels, 3c; whitening in barrels, \$1.50 a cwt; Crown pure white lead, \$7.50; Royal Charter, \$7.00; Railroad, \$6.50; Elephant pure white lead, \$7.50; Elephant No. 1. do., \$6.50; Bulls head do., \$6; Calsomine, \$6 per 100 pounds; Alabastine, \$7.25 per case of 20 packages. Window Glass, first break, \$2.20.

WINES AND LIQUORS.

Prices in this branch are given as follows:—Canadian rye whiskey, five year old, \$2.40; seven year old, \$3; old rye, \$1.75; Jules Rohin brandy, \$4.50; Bisquet Dubouché & Co., \$4.50; Martel, vintage 1885, \$6.50; vintage 1880, \$7.50; Hennessy, \$6.50 to \$7.50, for vintage 1885 to 1880; DeKuyper gin, \$3.50; Port wine, \$2.50 and upwards; Jamaica rum, \$4 to \$4.50 DeKuyper red gin, \$10.50 per case; DeKuyper green gin, \$6.00 per case; Tom gin, \$9.00 to \$10.00; Martel and Hennessy's brandy, one star, \$15.00 per case of 12 bottles; v. o., \$20.00; v. s. o. p., \$22.50.

GRAIN AND PRODUCE MARKETS.

WINNIPEG.

WHEAT.

The past week has been a lively one in connection with wheat markets all over this continent, and in the United States a nervous and unsettled state of affairs has existed. The boom of the previous week in Chicago continued on Monday last, but seemed to have spent its force that day, a decided reaction having set in the next day. Bears were for a time held and it looked as if a collapse of prices was certain. The feeling changed again towards the close of the week, and higher prices were again reached, a slight advance on the figures of the previous being maintained. Fluctuations are the result of speculation, but the season of the year and the uncertainty as to spring wheat crops, added to the fact that the surplus for export has now got within the grasp of speculation rings, all combine to create the existing nervous and unsettled feeling. In Canada the boom in hard wheat prices has kept on without abatement. The quantity available now is short of the probable wants of the summer, and the great bulk of it is held by parties who have no intention to sell at present, but everything to gain by holding on. Only a few outside influences are wanted to make holders demand heavy advances on even the fancy figures now reached. A cry about symptoms of drought in the Dakota and Minnesota districts, and fears of damage to the crop of this season have no doubt aided in making the boom state of affairs, although it does seem a little premature to hear talk of drought there before the middle of May.

The local market exists only in expectations at present. What wheat there is in the country is held by dealers or millers, and if farmers

have any on hand they are unable to bring it to market, while they are rushed with their spring work. Wheat seeding is now over, and the outlook so far is good. The seed has a moist soil to sprout it, and there is no fear of damage from drought, if no more rain comes during May. The weather has been cold and backward, however, and very little growth has set in as yet. The spring as a whole is looked upon as a favorable one, but still it is impossible for another month to foreshadow crop results. There are scarcely any local transactions to fix a price by, but judging from prices asked for Port Arthur stored, and in eastern cities, wheat is worth the conventional dollar a bushel in Winnipeg at present. The figure is a nominal one, however, and no actual prices are likely to be reached during the present summer.

FLOUR.

Eastern markets have been strong and active, and have drawn quite a heavy export from this country and have reduced stocks at the mills. The local market has been fairly active, and the feeling is firm all round, although there has been no further advance of prices locally. Quotations are: Patents \$3.00; strong bakers, \$2.75; second bakers, \$2.20; XXXX, \$1.40; superfine, \$1.25 Graham flour, 2.75; middlings, \$3.00 per 100 pounds.

MILLSTUFFS AND FEED.

There is still a firm feeling in these products, and prices of the previous week were maintained. With the return of warm weather and grazing reached, prices would doubtless decline. Quotations are: Bran, \$14 a ton; shorts, \$16; ground feed, in ton lots, \$21.

MEALS, POT BARLEY, ETC.

There is no change to report, prices holding firm at the advance of the previous week. Prices are quoted as follows: Standard, \$2.40; granulated, \$2.50 per 100 lbs.; rolled oats, \$2.60 per sack of 90 lbs. Rolled oats are also obtained in 80 lb sacks at \$2.50. Cornmeal is held at \$1.50 per 100 lbs.; pot barley, \$2.75, and pearl barley, \$3.25 per 100 lbs.

OATS

Car lots are very rare now, and those offered have sold freely at 45 to 47c, according to quality. Small lots of feed oats have sold at 47 to 48c, while oats for seed are held firm at 50c for mixed, and even higher for choice lots of white.

BARLEY.

There seems to be very little call for this grain even for seed. Small lots good enough for that are sold at 60 to 65c, but inferior samples are neither offered nor called for. The acreage in barley this year promises to be very small.

CHEESE.

As yet there is no offering reported from our local factories, and the demand from the east is light. Round lots can be laid down here from the east at 11 to 11½c, while the jobbers are selling in lots of one, two or three cheese at 12½ to 13c.

BUTTER.

So far as stock is concerned we would refer readers to a letter from correspondents in another part of this issue. Prime fresh made butter either in rolls or corks finds ready sale at 16 to 18c, and the supply is rather short of the demand. Old stock, even when good is slow sale, and only choice lots of it will bring 15c.

EGGS.

The supply is getting more liberal but prices hold up well, the range being 12 to 12½c. Packers are now buying.

LARD.

No change reported. 20 pound pails quoted at \$2.20, and tierces at 9c a pound.

CURED MEATS.

The demand has been fair, with prices holding steady, but not so firm as during the previous week. Prices here are as follows: Long clear dry salt bacon, 9 to 9½c; spiced rolls, 11c; breakfast bacon, 12 to 12½c, the higher price for boned; smoked hams, 13 to 13½c per pound; mess pork, \$18 per bbl.; bologna sausage, 7c, German bologna, 9c per pound; fresh pork sausage, 8c per pound; pickled pigs feet, \$1.50 per kit of about 20 pounds; ham, chicken and tongue sausage, 9c per packet.

HIDES AND TALLOW.

No change to report since last issue. The movement is very light and the feeling slow. Although in the east prices are firm, they are in a great measure nominal here. Country hides in the Winnipeg market are worth about 2½ to 3c per pound. Heavy steers are worth 4½c for No. 1, and 3½c for No. 1 cows; No. 2, 3½c for heavy steers and 2½c for No. 2 cows; No. 3, 2c. Calfskins, No. 1, 5c, No. 2, 4c. Sheepskins, 50 to 85c. Tallow, 2½ to 3c for rough and 4½ to 5c for rendered.

LIVE STOCK.

The supply and demand have balanced pretty well during the past week, although there has been a scarcity of really fat butcher stock. Still all hopes of fancy figures have faded. About 4c is the average of stock, fairly fat, but a good many cows and rather thin steers have been brought for slaughter at lower figures.

DRESSED MEATS.

High prices still rule, and doubtless will until grass fed stock can be had, and with the present cool weather that seems a long way off. Beef carcasses are quoted at 7 to 8c; dressed pork at 8 to 9c; Veal, 8 to 10c; Mutton 13 to 14c. Butchers are grumbling considerably over these high figures.

POULTRY AND GAME.

Poultry are a little more plentiful than they were two days ago. Chickens are offered at 80c a pair and choice at \$1. Turkeys are quoted at 15c a pound.

VEGETABLES.

Potatoes are now plentiful, an abundant supply having been brought from the south. Lots of 50 bushels and upwards can now be bought for 70c, and car lots 5 to 6c less. Carrots and turnips are out of the market, and parsnips and beets are too scarce to allow of quotations. New cabbage are held still at 7c a pound, lettuce 40c a doz., cucumbers \$2 a doz., radishes 50c a doz. A few old onions are still held at \$5 a cwt., but next week Egyptian onions are expected on the market.

HAY.

The demand still holds good, and prices are \$12 to \$13 a ton on track.

Railway News.

The Duluth & Winnipeg railroad has doubled its capital stock, increasing from \$1,000,000 to \$2,000,000, and will move its general offices from St. Paul to Duluth at once. There is not a drop of water in this stock issue, and the funds at the command of the road now render

Heintzman Pianos, Karn Organs and Raymond Sewing Machines

ARE THE BEST.

Agents Wanted in Unoccupied Territory.

ADDRESS:

JAS. HADDOCK & CO.,
271 Main Street, - WINNIPEG, Man.

unnecessary the issue of bonds to complete the line to the Canadian boundary, which it will reach by November next.

The Canadian Pacific company proposes to issue \$20,000,000 .4 per cent. bonds on the Duluth, South Shore & Atlantic, and to guarantee the bonds.

The following are the land grants to Manitoba and Northwestern railways proposed by the Dominion Government: 1. 6,400 acres per mile for the continuation of the Glenboro branch from that point westerly a distance of 60 miles to a point on the Souris branch. 2. The same acreage per mile on the Souris branch of the C. P. R. from Kenmay to township 3, range 27, and thence westerly, a total distance of 100 miles. The same grant from township 3 easterly to Deloraine, making the total length of the railway to which the grant is applicable, 25 miles. 3. The same acreage per mile for the Campbell-Crawford railway from townships one in ranges 23 or 24, a distance of 17 miles to the coal mines. 4. The same acreage for the Lac Seul railway from Shelley station to White Mud Lake, a distance of 18 miles. 5. The same acreage for the Calgary & Edmonton railway from Calgary to Edmonton, 210 miles, and Calgary to the boundary, 120 miles and 3,840 acres for the Galt railway from Lethbridge to Crow's Nest Pass, a distance of 100 miles.

The expense of survey and other incidentals will be deducted from these grants.

General Notes.

L. Guichon has purchased a fine property in Chestnut, Victoria, B.C.

The head office of the Canadian Anthracite Coal Company has been transferred from Winnipeg to Ottawa.

W. H. Vianen, of New Westminster, B. C., got a telegram last week from Montreal, asking if he could ship 800 pounds of salmon, more

GREENE AND SONS COMPANY

WHOLESALE

Furs, Hats, Robes,

GLOVES, MOCCASINS,

Etc., Etc.

Manitoba Fall Trade, 1890



Men's Furnishings.

Sole Agents in Canada for

Dr. Jaeger's Woolen Underwear. MONTREAL.

than the usual amount to that city, and 1,000 pounds more to New York, every day. He could not comply with the request, simply because the fish were not forthcoming.

The following is the reported catch of the Victoria, B.C., sealing schooners to date: Finland, 302 skins; Sea Lion, 206; San Jose, 118; Teresa, 1,540.

The firm of Johnston & Tyson, Vancouver, B.C., has been dissolved, Johnston withdrawing therefrom. The business will be continued hereafter in the same place by A. M. Tyson.

The people of Canada and the United States have the reputation to being keen and shrewd in protecting their own interests, but the statistics of loss by fire do not sustain this character. Last year 87 flour mills, 16 grist mills, 6 cornmeal, 3 oatmeal and 2 feed meal mills in the two countries were destroyed by fire. The loss amounted to nearly two million dollars more than the insurance. Making due allowance for the greater proportion of frame buildings amongst American mills than amongst

European, the figures indicate greater carelessness than prevails on the other side of the Atlantic.—Toronto Empire.

Wm. Brown, late of the "John A. Brown" establishment, Brandon, has bought out the business of Miss Creighton, and will open up on a large scale in a few days.

J Y Griffin & Co., pork packers and provision merchants, of Winnipeg, have moved into new premises at 41 Bannatyns street east, where they will occupy a fine solid brick block 35x100 feet in area, with basement and the floors of that size. The firm will now be in a position to meet the greatly increased demand for their goods, which they have had of late, and which in their old premises they have been crowded in handling. The pork packing and meat canning interests of Manitoba have been rising rapidly in importance during the past few years, and Messrs. J. Y. Griffin & Co. have been maintaining a leading place therein, and by this new move show that they have the enterprise to maintain their leading position.



TASSE, WOOD & CO.

Manufacturers of

Fine Cigars, MONTREAL.

Our Brands: { Reliance Terrier,
Mikado and General
Arthur.

Are unsurpassed by any in the Dominion
Ask your Wholesale Merchant
FOR THEM.

J. S. NORRIS.

JAS. CARRUTHERS.

NORRIS & CARRUTHERS,

WHEAT EXPORTERS,

ORONTO and MONTREAL

Open to buy Wheat f.o.b. Cars at any
Station or delivered at Port Arthur
on Sample or Inspector's Certificate.

Allen & Brown,

PORK PACKERS,

For Fine Hams, Bacon, Rolls, Long
Clear, Mess Pork, Lard, Bologna
and Pork Sausage Casings,
&c., &c., &c.

ALL GOODS GUARANTEED.

70 McDERMOT STREET. - WINNIPEG.

Eggs Wanted!

We are again in the market for any quantity
of Fresh Eggs either delivered here or at any
railway point in the Province. Egg Cases
furnished.

Our Stock of Provisions is complete. Orders
and correspondence solicited.

J. Y. GRIFFIN & CO.

Pork Packers and Provision
Merchants,

41 Bannatyne St. East, - - WINNIPEG.

Joseph Carman,

—WHOLESALE DEALER IN—

GREEN AND DRIED FRUITS, VEGETABLES,
Creamery and Daily Butter, Eggs,
Cheese, Comb Honey, &c.

Write for prices on Cars Potatoes. Consig-
nments and Orders Solicited.

21 Alexander Street West, - - WINNIPEG.

J. S. CARVETH & CO., PORK PACKERS

Sugar-Cured Hams, Breakfast Bacon, Spiced Roll,
Pure Pork Sausage, Long Clear Bacon, Bologna
Sausage, German Sausage, Ham, Tongue
and Chicken Sausage.

Pigs Feet, Bologna and Sausage Casings.
PACKERS AND COMMISSION MERCHANTS.
23 Jemima St., WINNIPEG.

A. WILLIAMS & CO.

49 QUADRA STREET,

VICTORIA, B.C.

Commission -:- Merchants

And Manufacturers' Agents.

All kinds of Produce Handled.
Advance made on Consignments of Butter
and Eggs.

Best Market Price obtained for all Goods
and Prompt Settlements.

CAMERON & KENNEDY

LUMBER

MANUFACTURERS.

WHOLESALE DEALERS IN

Dressed Lumber,

SHINGLES AND LATH.

Norman, - - Ontario.

Robertson, Linton & Co

CORNER OF ST. HELEN AND LEMOINE STS.,
MONTREAL.

Importers of British and Foreign Dry Goods,
Canadian Tweeds, Cottons, Etc.

Complete set of Samples with J. N. ADAMS,
Rooms 14 and 15, Rowan Block, Winnipeg.
(Opposite Queen's Hotel.)

TRUE BUSINESS PRINCIPLE, Buy and Sell for Cash!

Provisions and Staple Groceries
Lower than any House in
the Trade.

WHOLESALE ONLY.

SEND FOR QUOTATIONS.

A. McDONALD AND CO.,

228 Main Street, WINNIPEG.

To Fish Dealers, Butchers, Etc.

I am now prepared to ship fresh spring Salmon and all
kinds of Salt Water fish at lowest market prices.
I pack in specially devised boxes, well iced, and my
shipments usually give the best of satisfaction.
Will ship per express COD unless otherwise specified.

R. V. WINCH,

Wholesale and Export Fish Merchant,
66 CORDOVA STREET,
VANCOUVER, B.C.

FISH!

Fresh White Fish, Salmon, Haddock
Cod, Mackerel, Herring,
OYSTERS IN BULK AND SHELL, Etc.,
Also a large variety of every
SALTED, DRIED AND SMOKED
Goods obtainable for this market.

ORDERS BY MAIL PROMPTLY ATTENDED TO.

J. H. DAVIS

3 PORTAGE AVENUE, WINNIPEG.

KIRKPATRICK & COOKSON

Established 1860,

MONTREAL,

Commission Merchants,

FLOUR, GRAIN, BUTTER, &c.

Consignments and Orders solicited

Thouret, Fitzgibbon & Co.

BERLIN. NEW YORK. MONTREAL.

FACTORY AGENTS FOR

Exclusive Novelties in Dress Goods,
Underwear, Linens, Woolens, Hosiery,
Jackets, Embroideries, Buttons, Etc.

Represented by H. A. DRISCOLL & CO.,
ROOMS 26 AND 28 MCINTYRE BLOCK,
P.O. Box 179, WINNIPEG.

James Flanagan,

—WHOLESALE DEALER IN—

GROCERIES AND PROVISIONS

—AND—

PRODUCE COMMISSION MERCHANT.

No. 7 QUEEN STREET EAST,
WINNIPEG.

PRICES FURNISHED ON APPLICATION

Chicago Board of Trade Prices.

The week was one of great excitement all through, and on Monday fluctuations were of a wild character, and as a rule resulting mainly from contradictory reports of rain or drought in the Northwest. The day's fluctuations had a range of fully four cents, but the closing was firm and higher than on the previous Saturday. Closing prices were :-

	May.	June.	July	Aug.
Wheat.....	95	95	92½	90½
Corn.....	31½	34½	35½	35½
Oats.....	25½	25	25	23½
Pork.....	13.25	13.35	13.45	—
Lard.....	6.35	6.42½	6.47½	—
Short Ribs.....	5.37½	5.40	5.47½	5.55

Wheat opened quieter on Tuesday with prices ranging for May from 93½ to 95c, June 93½ to 95½c, July 92½ to 95½c and August 89½ to 90c. Oats were in fair demand but fluctuated within a narrow range. Closing prices were :-

	May.	June.	July	Aug.
Wheat.....	93½	93½	92½	89½
Corn.....	31½	34½	35½	30
Oats.....	25½	25½	25	—
Pork.....	13.10	13.25	13.35	—
Lard.....	6.32½	6.40	6.47½	6.55
Short Ribs.....	5.42½	5.45	5.55	5.60

There was a sharp decline in wheat on Wednesday, May ranging at 91½ to 93½c, and closing at 91½c. June travelled in company with May and closed at 91½c. July ranged at 90½ to 92½c, and August at 88 to 88½c. The oat market was unusually quiet, May closing about ½c better than yesterday. Closing prices were :-

	May.	June	July.	Aug.
Wheat.....	91½	91½	90½	88
Corn.....	32½	33½	34½	35
Oats.....	25½	25½	24½	—
Pork.....	13.00	13.10	13.30	—
Lard.....	6.27½	6.35	6.42½	6.57½
Short Ribs.....	5.40	5.42½	5.50	—

On Thursday a strong feeling again set in, and an advance in wheat of over 2c was made. Crop reports favored the bulls and they made the best of it. Closing prices were :-

	May.	June.	July.	Aug.
Wheat.....	95	93½	93½	—
Corn.....	34½	34½	35½	—
Oats.....	27½	26½	25½	—
Pork.....	—	13.10	13.25	—
Lard.....	—	6.37½	6.45	—
Short Ribs.....	—	5.45	5.50	—

On Friday the market opened with considerable excitement, and prices advanced fully 1½c over the closing figures of the previous day, and at one time it seemed as if dollar wheat would be reached before the close of the week. Towards the close prices eased off and a quieter feeling set in. Closing prices were :

	May.	June.	July.	Aug.
Wheat.....	95	94½	94½	—
Corn.....	34½	34½	34½	—
Oats.....	27½	25½	25½	—
Pork.....	—	13.00	13.20	—
Lard.....	—	6.32½	6.40	—
Ribs.....	—	5.40	5.47½	—

The Japanese consul at Vancouver, B. C., is desirous of getting from merchants, mining men and manufacturers in Canada, samples of their products to forward to Japan with a view of encouraging a more liberal trade between Canada and Japan. It is said the Japanese government favors Canada.

W. HERMISON and son, late of Mount Pleasant, Ont., have been engaged to take charge of a creamery at Qu'Appelle,

Minneapolis Market.

Following are closing wheat quotations on May 8 :

	April.	May.	July.	On track
No. 1 hard.....	91½	93½	93½	92½
No. 1 northern.....	91½	92½	93½	91½-92
No. 2 northern.....	87.	88	89	87-89

FLOUR.

Patents, sacks, to local dealers.....	\$5 35 to \$5 55
Patents, to ship, sacks, car lots.....	\$4 70 to \$5 10
In barrels.....	\$5 10 to \$5 40
Delivered at New England points.....	\$5 80 to \$5 95
New York points.....	\$5 70 to \$5 85
Delivered at Philadelphia and Baltimore..	\$5 65 to \$5 80
Bakers here.....	\$3 20 to \$3 95
Superfine.....	\$1 95 to \$2 80
Red dog, sacks.....	\$1 30 to \$1 45
Red dog, barrels.....	\$1 45 to \$1 70

Bran and shorts—Bran is quiet and steady at \$8.75 to \$9. Shorts are pretty well sold up and quote at \$9 to \$9.75. Some holders ask up \$10.

Corn—Market quiet and but little dealing. Some offered to arrive at 32 to 32½c. Receipts 6,100 bushels, shipments 6,600 bushels.

Oats—The offerings were small with a pretty fair inquiry at about 25 to 27c, according to quality. Receipts 5,400 bushels, shipments 2,700 bushels.

Barley—Offerings light and demand inactive. Good sound barley quoted at 30 to 35c. Some held as high as 40c but bids on it were not over 35c.

Hay—Market quiet under light offerings at about \$8 for good upland with wild ranging all the way from \$6.50 to \$7.50 according to quality.

Eggs—The market is steady at 11c including cases, for good fresh eggs. Some seconds are being worked off at 10½. Buyers are still grumbling over the recent ½c advance and are not picking up any more eggs than necessary. The receipts are smaller though so the market is not showing any accumulation.

Potatoes—Nice choice qualities of potatoes are meeting with a moderate demand on local account and good prices are obtained. Request for shipping account is light as eastern markets are still quite fully supplied. Potatoes in small quantities are selling at from 28 to 30c.

Toronto Markets.

Flour—Was dull and unsettled, with but little demand. A car of straight roller in bags, bags included, was offered at \$2.20, Toronto freight, but not taken. A car was bought by a dealer at equal to \$4.25 f.o.b., Toronto freights.

Bran—Stocks apparently have been pretty well reduced, for buyers were out in great numbers to-day and holders advanced prices. Cars are worth \$11, Toronto freights, and \$12.50 on track.

Wheat—Quiet but firmly held, though at the close the feeling was somewhat unsettled. No. 2 white sold on the Northern at \$1.05, and spring on the Midland, at \$1.03 and \$1.03½. No. 1 Manitoba hard sold at \$1.23 to arrive. Several enquiries were heard for No. 2 hard but none was offered. For this grade, to arrive, \$1.20 was asked.

Barley—Offered more freely. Demand dull and feeling easy. No. 3 extra sold on the C. P.R. at 46c, Toronto freights, and round lots offered on spot at 49c.

Peas—Steady and in good demand at 57c on Northern and 58c Midland. Bids of 61c were made for f.o.b. vessel.

Oats—Dull and lower on spot, sales were

made at 37c for mixed, to arrive on track, and white were offered at 37½c on track. White sold G. T. R. west at 35c, and east at 36c, with mixed at 35c. A lot of 5,000 bushels mixed sold east at 37c f.o.b., July shipment.—*Empire*, May 7.

Montreal Stock Market.

Following were closing quotations on Friday last :-

	Banks.	Sellers.	Buyers.
Bank of Montreal.....	227½	—	226
Ontario.....	—	—	123½
Molson's.....	—	—	—
Toronto.....	—	—	214
Merchants.....	147½	—	145
Union.....	—	—	—
Commerce.....	129½	—	128½
Miscellaneous.			
Montreal Tel.....	97½	—	96
Rich. & Ont. Nav.....	60½	—	59½
City Pass. Ry.....	203½	—	207
Montreal Gas.....	200½	—	199½
Canada N. W. Land Co.....	82½	—	80
C. P. R. (Montreal).....	78½	—	78½
C. P. R. (London).....	—	—	80½
Money—Time.....	7	—	—
Money—On call.....	5½	—	—

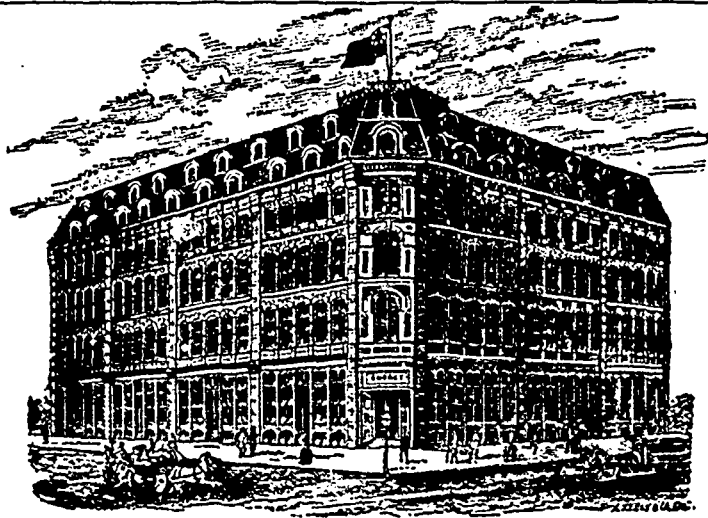
The prospectus is being issued of a joint stock company to be known as the "Nanaimo Brewing Company, Limited," with a capital of \$75,000, divided into fifteen hundred shares of \$50 each. It is estimated that an expenditure of \$35,000 will be necessary to enlarge and improve the present brewing premises and to obtain the necessary plant and machinery for the manufacture of the grade of beer known to the trade as lager beer. The company propose to purchase from John Mahrer the land and premises known as the Nanaimo Brewery, including all the plant and good will of the Nanaimo brewery business. The price to be paid is \$25,000—\$15,000 in cash and \$10,000 in paid up stock of the new company.—*Nanaimo, B.C., Free Press.*

The Vancouver *News Advertiser* reports: Eight houses with their furniture, stock, etc., have been burned to the ground at Revelstoke. The fire was first discovered in the dwelling house of Mr. John Patton, and rapidly communicated to the others. The loss is estimated as follows: John Patton, house and furniture, totally destroyed, about \$1,000; James Liberly, contractor, house and furniture, lost about \$200 cash, the total will foot up close on \$1,400; Sam Hamilton, dwelling house and furniture, about \$600; Guy Barber, jeweller, saved his stock, building destroyed, loss about \$500; E. S. Wilson is the largest loser, saving only a small portion of his stock, while his fine new store was totally destroyed. His loss cannot be far short of \$5,000.

Gustav R. Fabre, importer of hardware, saddlery and carriage furniture, Montreal, has assigned on demand of the Banque Du Peuple, which has a claim against him for \$38,000. Claims amounting in all to \$81,000 have been filed against him. The Banque Nationale and Ontario Bank are creditors each to the amount of about \$10,000.

The late W. R. Cusack, who was buried at Victoria, B. C., last week, held a policy for \$1,200 in the Commercial Travellers' Association, and another for \$1,000 in the Mutual Benefit. These sums will be immediately paid over to the bereaved wife.

MEN'S BOYS' AND YOUTHS' CLOTHING
 CHILDREN'S CLOTHING A SPECIALTY.



Our Samples for the Spring Season, 1890, are
 now on view at 35 Lombard St.,
 Winnipeg.

H. SHOREY and CO., WHOLESALE CLOTHIERS,
 1866, 1868 and 1870 Notre Dame and 36, 38 40 and 42 St. Henry St., MONTREAL.

J. & A. Clearihue,
 COMMISSION MERCHANTS

—DEALERS IN—
FRUITS AND ALL KINDS OF PRODUCE.

Special attention to consignments of
 Furs and Skins, Butter and Eggs.

Yates Street, VICTORIA, B. C.
 P. O. BOX 536.

AGENTS Skidgate Oil Works, B. C.; D. Richards,
 Laundry Soaps, Woodstock, Ontario; Teller, Rothwell &
 Co., Montreal, Parisian Washing Blue
 We have a large cool warehouse with good facilities for
 handling Butter and Produce in quantities.
 Consignments Received in all Lines. Correspondence Solicited.

S. R. PARSONS. HENRY BELL. W. E. HAZLEY

PARSONS, BELL & CO.,

Wholesale Paper Dealers
 —AND—
GENERAL STATIONERS.

AGENTS

Canada Paper Company,
 Manufacturers Printing, Wrapping & Writing Paper
 &c., Montreal and Windsor Mills, Quebec.

Alex. Pirie & Sons,
 Manufacturers Fine Stationery, Aberdeen, Scotland.

M. Staunton & Co.,
 Manufacturers Wall Papers, Toronto.

CORNER PRINCESS AND BANNATYNE STREETS,
 WINNIPEG.

Barrett & Co.

BRANDON, MAN.

Importers and
General Grocers

WHOLESALE AGENTS FOR THE LEADING
 BRANDS OF CIGARS.

We make a specialty of Hotel Orders. If
 you are a large consumer write us for
 notations.

THE DRIARD,

VICTORIA, B. C.

The only strictly first-class hotel
 in the province.

LELAND HOUSE, VANCOUVER,

British Columbia.

The leading commercial hotel of the city.
 Directly above the C. P. R. Station and Steam-
 boat wharf. All modern improvements. Sample
 rooms for travellers.
 J. E. INSLEY, Mgr. WM. PROUT, Prop

EVANS BROS.' PIANOS,

Fine Finish, Fine Toned, Easy Touch.

THE UNEQUALLED

Doherty Organ.

Send for Catalogue and Price Lists

AGENTS WANTED.

O. E. MARCY, GENERAL AGENT.

WINNIPEG.

MACKENZIE & MILLS,

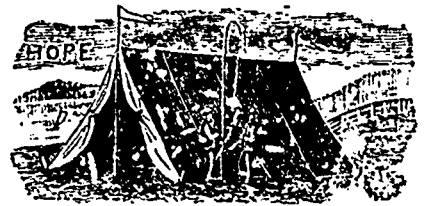
WHOLESALE GROCERS

Special attention given to

Teas, Coffees, Canned Goods,

DRIED FRUITS, Etc.

CORNER KING AND ALEXANDER STREETS
 WINNIPEG, MAN.



HOPE & CO.

—MANUFACTURERS OF—

Tents, Awnings, Mattresses and
Horse Covers.

GUN CASES.

9 McWilliam St. East, - WINNIPEG.

A. Carruthers

WOOL PULLER

—AND DEALER IN—

Hides, Skins, Wool, Tallow
and Seneca Root.

HIGHEST MARKET PRICES PAID
 CONSIGNMENTS SOLICITED.

OFFICE AND WAREHOUSE :

38 Jamima Street, - Winnipeg

JAS. COOPER.

J. C. SMITH

Cooper & Smith,

MANUFACTURERS,

Importers and Wholesale Dealers in

BOOTS AND SHOES!!

36, 38 & 40 FRONT ST. WEST

TORONTO.

McALPINE TOBACCO CO.

TRY OUR

"WOODCOCK"

SMOKING IN

10c. and 25c Plugs.

The Sweetest and Coolest Smoke of any
Tobacco in the market; also our

OLD CROW

CHEWING IN 10c PLUGS.

The Highest Grade of BLACK GOODS made in Canada

WORKS: NEW YORK CITY, AND

ESPLANADE, - TORONTO

British Columbia.

The Vancouver *World* reports building trade brisk in that city.

The Customs returns at Nanaimo for the month of April were \$5,083 80.

Wo Hing, of Donald, was fined \$300 and costs last week for selling opium without a license.

The customs returns at Vancouver for the month of April are \$14,935.54 against \$9,591.29 last year.

C. Whetham & Co. have been appointed agents in British Columbia for the Ontario Basket Factory.

A. C. Wells, proprietor of the Chilliwack cheese factory, intends to commence operations in about two weeks.

At Westminster the street improvement by-law to raise \$80,000 was carried last week by an overwhelming majority.

W. Duncan and Ald. Batchelor of New Westminster are building a cannery at the mouth of the Fraser river on Lulu Island.

J. C. Henderson, of Chilliwack, has disposed of his merchandise store to Martin Bros., who will hereafter conduct the same.

E. W. Bickle, Postmaster of Wellington, has received instructions from Ottawa to open in connection with his office a Post Savings Bank.

Work on the new Canada Western Hotel, Victoria, has begun, and the intention is to run it through to completion speedily. It will cost at least \$200,000.

Mr Stewart, C.E., is the gentleman who was appointed superintendent of the Columbia and Kootenay railway, not J. McLeod as reported in these columns last week.

Capt. Purdy and A. J. Hill, of New Westminster, have purchased W. J. Harris' brickyard at Port Haney, and will begin work at once, their machinery now being on its way from the east.

A large quantity of machinery arrived from Victoria by the Yosemite yesterday for the Brunette Saw Mills. This will be put in place immediately and in a few weeks the saw mill will be ready for cutting.

E. S. Scoullar & Co. have disposed of their large hardware and manufacturing business in New Westminster, to H. M. Cunningham & Co. They will retain their Vancouver house, which will not be in any way affected by the sale.

Inspector Mowatt has received word from the Department at Ottawa that the Salmon Fishery regulations recently issued have been amended so that the close season will be from 6 a.m., Saturday, till 6 p.m., Sunday, of each week.

The finance committee of the Vancouver city council submitted estimates of municipal revenue and expenditure for the current year at their last meeting. The estimated general revenue is \$184,295.39 and a \$125,000 loan is proposed. The estimated expenditure is \$309,295.39.

The New Westminster Electric Supply Company is making arrangements to bring into use what is known in the east as the City and District Telegraph and Messenger Service. Mr. J. H. Galbraith, manager of the company, is making a tour of the city soliciting orders, and is meeting with satisfactory support.

Messrs. Nicholles Renouf and Kane left

Vancouver last week to erect a sawmill for the Nelson City Improvement Company. The first shipment of machinery has arrived at Nelson City, and two car loads more are now en route from the Waterous Co. The probability is that early in June the mill will be running. It will be capable of turning out 50,000 feet of lumber daily.

During the month of April the transactions in the Custom House at New Westminster were as follows: The imports were valued at \$21,708, upon which duty was collected to the amount of \$5,279.38; other revenue, \$62.65; total revenue for the month, \$5,342.93. The value of exports were \$1,507.83; increase in favor of 1890, \$3,834.20.

Those who have ever met him will be shocked to learn that W. L. Cusack, the popular and well-known traveller for S. J. Pitts & Co., Victoria, was killed while attempting to board a train at New Westminster last week. The train was running rather fast and he lost his hold on the railing, falling beneath the wheels. Deceased was a native of Hamilton, Ont.

Westminster *Truth*: Spring salmon are running extremely well, and each boat brings in large catches. W. H. Vianen is now shipping to order 3,000 pounds per day to New York, via Montreal, and W. D. Port & Co. are averaging something over 2,000 pounds daily to the same market; in fact, every fish caught and not required for home consumption is shipped east and meets a ready sale at very favorable prices.

A new mining company, composed of English and American capitalists, and several residents of Vancouver, has made arrangements to mine on Siwash Creek. They have purchased from the Siwash Bed Rock Flume Company the right to mine for six miles along the creek. An experienced engineer made a careful examination of the ground and found that it was very rich. The new company, which is called the Anglo-American Mining Company, will put a \$5,000 plant on the ground and begin operations in a very short time.—*News-Advertiser*.

Nanaimo *Free Press* says: Mr. Young, manager of the Hamilton Powder Works, is in the city making the necessary arrangements for the erection of the works near Northfield. Mr. Young in answer to a question said: We are going to push the erection of the works to completion as rapidly as possible, and it is my intention to commence work immediately. We have already one car load of machinery shipped for Nanaimo, and as soon as we are prepared for the remainder, which will be five car loads, it will be forwarded promptly so that there will be no delay. We have been shipping powder out here from Montreal for the last ten years so we know what success we are likely to meet with and as we expect to do a large business of course, we shall be compelled to employ a large number of men.

The following are the customs returns for the month of April at the port of Victoria:—

Value of imports, free.....	\$109,424 00
Value of imports, dutiable	194,476 00
Total	\$303,900 00
Value of exports	\$ 61,816 00
REVENUES.	
Duties	\$ 77,347 35
Other revenues	1,316 78
Total	\$ 78,664 13

A Thing of Beauty.

The above heading will not do justice to the elegant work of art issued by Louis Eckstein, of Milwaukee, Wisconsin, for the Wisconsin Central Railway. The work is entitled "Pen and Camera." The letter press gives a brief description of the notable scenes along this important railway, between Chicago and Lake Superior. The views accompanying the descriptive sketches are simply superb. Their beauty cannot be described in language, and they must be seen to be appreciated. The copy of this work of art with which THE COMMERCIAL has been favored, will be kept in a convenient place, where it can be examined occasionally, with a view of gloating over its beauties.

General Notes.

Montreal *Journal of Commerce*: "Old evaporated apples are again in some demand for export, and holders' prices are stiffer; 10c is wanted for choice stock out of cold storage and 9c for prime." The Montreal *Trade Bulletin* says: Dried apples are in demand at 5c to 6c per lb.; evaporated apples steady at 12c to 12½c per lb.

WILLIAMS' directory of Vancouver and Westminster has just been issued. This is a very complete work of over 300 pages, giving all the latest information about the two cities up to date. The book also contains considerable information relating to the province of British Columbia generally. Those wishing information about these two important cities should have this directory. R. T. Williams, publisher, Victoria, B. C.

A couple of handsome publications have been received at this office from Chas. S. Fee, of the Northern Pacific, St. Paul. One of these is called "A Journey through Wonderland, or the Pacific Northwest and Alaska." This is a handsome book of about 100 pages, magazine size, devoted to a description of the interesting country traversed by the Northern Pacific railway, by Elia W. Peattie. The book contains many beautiful illustrations and illuminated maps, while the matter affords interesting and instructive reading. The second work is a little illustrated pamphlet describing the same country from the standpoint of the sportsman. It contains a lot of useful information for tourists on sporting expeditions bent, including the game laws of the Northwestern States and British Columbia.

The *Dominion Illustrated* for May 3 comprises an even richer than usual variety of good things relating to nature and life in Canada. The portrait gallery includes fine likenesses of the late Mr. Charles Gibb, the great pomologist; of the late Prof. Lareau, M.P.P., the distinguished writer on literature and constitutional history; of Mr. Lorn J. McDougall, Auditor-General; of the Hon. Judge Landry and of Albert Ebenbeck, the "Hero of Hespeler." Some samples of Montreal's Conservatories, Raising the steamer Armstrong at Brockville, the Wreckage of Clark's Wharf, Sarnia, and some capital glimpses of Mounted Police and of Indian Life in the North-West, make up an extremely attractive number. The reading matter is of corresponding interest, comprising another of Mr. J. Castel Hopkin's articles on the Britannic Empire, the conclusion of May Austin's story, "The World, the Flesh and the Devil," a poem by Bliss Carman, etc. Address: *Dominion Illustrated*, 73 St. James street, Montreal.

Communications.

To the Editor of *The Commercial*.

SIR—Your own and other papers have lately said a good deal about butter, and I have no doubt your readers are as sick of the subject as they are of the quality now offering. We cannot pretend to teach other merchants how to get rid of the immense quantity of inferior butter now in stock through the city and province, but we made an attempt to form a plan by which some part of the inevitable loss might be avoided. We sent printed post cards to 225 merchants asking them to fill in the amounts on hand at their stores. Out of the 225 to whom these were addressed thirty-three took the trouble to answer. We also sent a circular saying we would publish the stock in the province monthly, in your paper, if the merchants would respond, and we should thereby have a basis of price, but as in six weeks time from issuing of the cards and circulars only thirty-three responded it is impossible for us to carry out either, the publication of the stock on hand, or our intention of exporting the stock from the province, since we can quote for no definite amount. Our intention was to arrive at the stock in hand, cable and wire for offers on the whole amount, or something a little under, and buy on the basis of the highest offer. We would point out now that Canadian dairy butter has fallen about 35 per cent since the end of March in foreign markets and the chance is lost.

The average stock of old butter was 400 lbs. per merchant, according to the cards received; this on 225 stores would equal 93,000 lbs., but no city stocks were included so that probably there is considerable over 100,000 lbs. of butter rotting in the province.

GRANT, HORN & BUCKNALL.
Winnipeg, May 4, 1890.

To the Editor of *The Commercial*.

DEAR SIR:—Being desirous of bringing to the notice of the public the exceptional sanitary qualities of Dr. Jaeger's Woollen Underclothing, (for which we have been appointed sole agents for the Dominion) we would request you to kindly insert the following in your paper:—
Yours truly, GREENE & SONS Co'y.

What is Dr. Jaeger's Sanitary Woollen Underclothing? It is science applied to clothing.

Pure wool garments for the year round in all articles of underclothing for men, women and children.

It is a reform of underclothing in the process used in the manufacture of these garments, preserving the body at an even temperature; also reducing the weight of the clothing.

That the trade in woolen underwear has been distinctly benefited and reformed, and its tone raised by the Dr. Jaeger's system cannot be disputed.

The practice of adulterating wool with shoddy and cotton had become well nigh universal and it was thought that the public, spoiled by cheap adulterated underwear, would never again be brought to pay the price which must be charged for the genuine pure wool, but the success of Dr. Jaeger's pure wool system has proved the contrary and is now very highly spoken of.

The tendency of the sanitary woolen system of Dr. Jaeger is to strengthen the weak, and preserve the health of the strong by keeping

the body at an even temperature and the pores of the skin comparatively open.

Dr. Jaeger's system for woolen underwear is warmly recommended by the Medical Faculty.

Assiniboia.

The drug store of H. J. Ruffles, Moosomin, is offered for sale.

The Medicine Hat *Times* says: The Galt extension south is to be completed by the 1st of Sept. The other end of the line between Great Falls and the boundary is to be finished by the 1st of August.

The beef contracts for the Indians are officially announced as follows: Blackfeet, McHugh Bros.; Piegan and Bloods, Cochran Rancho Company; Stony, Leeson & Scott; Sarcees, Northwest Cattle Company.

A number of leading farmers in the Whitewood district met Comte de Raffenac at the Commercial Hotel, Whitewood, on the 26th ult. with regard to the proposed beet sugar factory. The Count distributed three different varieties of beet root seed which had been sent from France and requested the farmers to sow the same. In July next he will inspect the results in conjunction with the chief mover of the proposed company who will arrive from France about the time this edible matures. If results are favorable, operations will commence in the near future. We understand the plant has been purchased and proper buildings will be erected. —Moosomin *Courier*.

Saskatchewan.

The sawmill of Prince Brothers, Battleford, started running last week.

The boiler for the Indian mill at Onion Lake reached Battleford a few days ago.

An early closing agreement has been in circulation amount Prince Albert merchants this week, and we understand has been signed by all to close their stores at 7.30 during the summer months.

Mr. Bigger, C. E. of the G. N. W. Central is vigorously prosecuting his survey and there is little doubt that the work of construction will commence on that road from Saskatoon westward just as soon as the line is located.

The Battleford agricultural society after consideration decided to refuse the offer of the Northwest Government of strychnine for the purpose of poisoning gophers on account of the danger to horses and cattle likely to result from its use, and the poisoned grain is frequently scratched out of the holes where it is placed and scattered on the surface.

Important Land Sale.

Through the columns of the *Canadian Gazette* of London, Eng., we learn that the land grant of the Manitoba & Northwestern Railway amounting to 2,700,000 acres in all, has become the property of a company under the name of the Manitoba Northwest Land Corporation (Limited), by purchase and options, at the low figure of two dollars per acre. Similar lands in the western part of Canada are bringing about five dollars an acre.

The shareholders of the company held their first statutory meeting at their London office, on April 10th.

The chairman, Mr. R. A. McLean, read a communication from the company's Canadian

agent in which he stated that "we shall be able to turn in more than the guaranteed sales for 1889. I expect that they will run up to 15,000 acres at the minimum average price."

There will be considerable curiosity in this province to know what will be the policy of the new possession of these lands, and the hope is generally expressed that it will be a liberal and energetic one, that will contribute materially to the speedy settlement of the vacant lands.

A Standard Measure.

Under this heading the *Montreal Gazette* has the following:—

"The green grocers who sell their wares on the markets express a desire that the markets committee would regulate the size of the baskets in which the goods are sold. They say that the man who comes down with a small basket can afford to sell at a cheaper rate than they do, and people are cheated thereby, as they do not get a full basket. The green grocers maintain that it is particularly hard on those who sell to ships, which pay so much per basket, and naturally the man with a smaller basket, although his goods are in the end the dearest, does more business than the honest trader. The green grocer thinks the markets committee should impose a standard measure, so that people would get the quantity of stuff they paid for."

Not only in green groceries, but fruit in and other imported articles of food, Manitoba towns have need of standard measures or weights. Such goods are dumped on the Winnipeg market in packages of every conceivable size, shape or weight, making buying in the granger's language a matter of "By guess and by gosh."

EVIDENTLY some journals are anxious to secure powerful anti-combine legislation from the Dominion Parliament, and are anything but satisfied with the present state of affairs. Of course it is only mercantile combines that are assailed by them, while combines of lawyers, doctors and other professional men are allowed to pass unnoticed. The following from the *Montreal Witness* is a specimen:—

The Dominion Wholesale Grocers' Association and the other monopolies are making a strong fight against the restoration of the combines bill, which they succeeded in having so mutilated last year that it was useless. The cause of the few "specially interested," which is the cause of those who seek to extort from the many, will probably be again successful. A farmers' deputation will be heard in favor of the restoration, but as against woollen, iron, cotton and wholesale monopolizing combiners who have flocked to Ottawa to defend their favorite institution, the farmers will receive scant attention from a protectionist administration.

The firm of Thompson & Rochon, fruit dealers, of Keewatin, has been dissolved. Thompson continues the business.

The Badger mine has at Murrillo, awaiting shipment, another car load of silver ore valued at \$18,000. The Shunia Weachu will ship to Liverpool \$5,000 worth of silver ore. The Beaver is reported to have struck rich silver at a point nearly half a mile from the main shaft north, at the junction of the Beaver and North Bluff veins.

Furniture and Undertaking House.

M. HUGHES & CO.

WHOLESALE & RETAIL

Furniture and Undertaking Warerooms
315 and 317 Main Street.

TELEPHONE No. 413.

Closest prices given to dealers
Satisfaction guaranteed in every department.

BROWN BROS., STATIONERS,

Wholesale and Manufacturing

64 to 68 KING STREET EAST,
TORONTO.

SPECIALTIES.

Account Books Paper—all kinds
Office Supplies Stationery
Wallets, Pocket Books
Ladies Hand Satchels
Pocket and Office Dairies
Leather Goods Binders Materials
Printers Supplies

CIGARS!

Encourage Home Manufactures by smoking

SELECTS, La Rosa and Havana Whips,
—MADE BY—

Bryan & Co
WINNIPEG, - MANITOBA.

STRANG & CO.

Wishart Block, Market St. East,

WHOLESALE GROCERS

AND DEALERS IN

Provisions, Wines and Liquors,
WINNIPEG.

CHAS. DAVIDSON & CO.

IMPORTERS AND DEALERS IN

SADDLERY AND

GARRIAGE HARDWARE

13 FRONT ST. W., TORONTO

COCHRANE, CASSILS & CO. Wholesale Boots and Shoes

Cor. Craig & St. Francis Xavier Sts.,
MONTREAL.
Manitoba and N.W.T. Agency: J. M. MACDONALD,
McIntyre Block, WINNIPEG.
British Columbia Branch: WM. SKENE, Van Horno
Block, VANCOUVER.

LYMAN BROS. & CO., WHOLESALE DRUGS AND MEDICINES

Every requisite for the Drug Trade
promptly supplied.

TORONTO, ONT.

RICHARD & CO, Importers and Wholesale Dealers in Wines, Spirits and Cigars

365 MAIN STREET,
WINNIPEG.

Chas. Boeckh & Sons,

—MANUFACTURERS OF—

BRUSHES, BROOMS,

AND WOODENWARE.

Our Goods can be had from all the Leading
Wholesale Trade.

JNO. E. DINGMAN, Agent, - WINNIPEG.

PHILP & CO. Wholesale Fruits

—AND—

COMMISSION.

Potatoes by car load, lowest prices, also Seed
Potatoes.
Car load of California Oranges, very cheap,
Lemons, Bananas, etc., etc.

Warehouse: COR. KING AND JAMES STS.
P.O. BOX 568.
WINNIPEG, - MANITOBA.

W. R. Johnston & Co. (Late Livingston, Johnston & Co.) WHOLESALE MANUFACTURERS OF READY MADE

CLOTHING

44 BAY STREET, TORONTO.

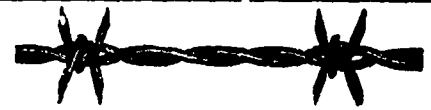
W. E. SANFORD M'FG CO., Ld.

MANUFACTURERS OF

CLOTHING

45 to 49 King St. Albert Street.

HAMILTON & WINNIPEG.



Home Production

WE MANUFACTURE

BARB WIRE,
PLAIN TWISTED WIRE, WITHOUT
BARS
And are Agents for the
Woven Wire Fencing.

We are in a position to fill all orders promptly.
Ours is the only wire manufactured in the Dominion of
Canada on which is found the GENUINE LOCK BARB
A personal inspection will convince you of this fact. Qua-
lity of wire the best ENGLISH BESSEMER STEEL
Every pound guaranteed.

Manitoba Wire Company

Steel, Hayter & Co.

TORONTO,

PURE INDIAN TEAS

Direct Importers of Indian Teas from
their Estates in

ASSAM, DARJEELING, KANGRA, CACHAR
SYLHET and KUMAON.

Indian Teas from the above districts always in Stock.

Samples and quotations on application to

GEO PARR, 149 Notre Dame St., WINNIPEG

CHAS. R. KING, FRED. GILLESPIE.
Victoria. Calgary.

First-class in every Respect
Appointments Perfect.
Graduated Prices.



Every Attention paid to
Guests.
MONTREAL.

NIXON & CO.

Wholesale Dealers in

Boots, Shoes and Rubbers

AGENTS FOR

GOODYEAR RUBBER COMPANY
OF CANADA.

525 Main St., - Winnipeg.

CANADIAN PACIFIC RY.

THE SHORTEST AND MOST DIRECT ROUTE

EAST, WEST —AND— SOUTH.

THROUGH TICKETS AT LOWEST RATES to Toronto, London, Detroit, Buffalo, Montreal, Quebec, Halifax, Boston, New York AND ALL POINTS IN THE EAST, also to St. Paul, Chicago, etc., etc.

\$10 Saved on 1st Class and \$5 on 2nd Class Tickets to Vancouver, Victoria, Seattle, Tacoma, Portland, Ore., San Francisco and all Pacific Coast Points by taking the Canadian Pacific Route.

EXCURSION TICKETS TO BANFF HOT SPRINGS AND THE PACIFIC COAST ON SALE DAILY.

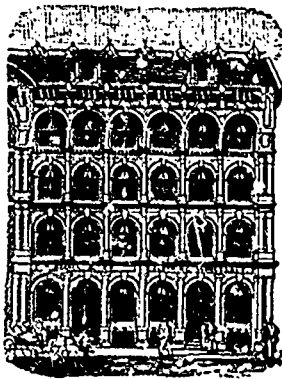
Palace Dining and Sleeping Cars, Comfortable Day Coaches and Free Colonist Sleeping Cars on all Through Trains.

Leave.	WINNIPEG.	Arrive.
18 20 Daily.	Pacific Express for Portage la Prairie, M. & N.W. Railway Stations, Carberry, Brandon, Qu'Appelle, Regina, Moosejaw, Medicine Hat, Calgary, Banff Hot Springs, Donald, Kamloops, Vancouver, New Westminster and Pacific Coast Points.	16 30 Daily.
7 17 30 Daily except Thur.	Atlantic Express for Rat Portage, Port Arthur, Sudbury, Sault Ste. Marie, North Bay, Toronto, London, Detroit, Niagara Falls, Ottawa, Montreal, Boston, Halifax, New York and all Eastern Points.	10 50 Daily except Wed.
9 45 1/2 Daily.	St. Paul Express for Morris, Greta, Grafton, Grand Forks, Fargo, Minneapolis, St. Paul, Duluth, Chicago, St. Louis, Detroit, Toronto, Montreal, etc.	12 50 Daily
b 9 45	Connects with Mixed for Morden, Manitou, Killarney, Deloraine and Intermediate Stations.	12 50 a
a 11 25	Morris, Morden, Manitou, Killarney and Deloraine.	17 15 b
a 11 50	Headingley, Carman, Troherne, Holland and Glenboro.	16 00 b
b 7 50	Stony Mountain and Stonewall.	12 15 b
b 18 00	Kildonan, Parkdale, Lower Fort Garry and West Selkirk.	11 15 a
c 8 00	Niverville, Otterburne, Dominion City and Emerson.	18 00 c

a, Tuesday, Thursday and Saturday; b, Monday, Wednesday and Friday; c, Friday only.

TICKETS { 471 Main Street and C.P.R. Depot, Winnipeg.
G. H. CAMPBELL, Ticket Agt.
Or at any Regular Station of the Company.

GEO. OLDS, D. McNICOLL,
Gen. Traffic Mgr., Gen. Pass. Agt.,
MONTREAL. MONTREAL.
W. WHYTE, ROBT. KERR,
Gen. Sup't, Gen. Pass. Agt.,
WINNIPEG. WINNIPEG.



Albert Buildings, Victoria Square, MONTREAL.

To keep pace with our rapid increasing business we have moved into our new and more commodious premises, and will no longer experience any inconvenience in filling with promptitude the orders of our patrons, to whom we return thanks for past favors, and request a continuation of the same in the future. Our Mr. Leisman is now out with our Fall Samples in Manitoba and the Territories while our Mr. Sandeman is covering the ground in British Columbia as usual. We respectfully request that you will see their samples before placing your orders for the season. Orders given to these gentlemen will receive the prompt and careful attention of

YOURS RESPECTFULLY,

E. A. SMALL & CO
MANUFACTURERS OF CLOTHING.

TEES, WILSON & CO.

70 ST. PETER STREET, MONTREAL.

A FULL ASSORTMENT OF
INDIAN, CEYLON, CHINA AND JAPAN
T E E S.

We make a specialty of CEYLON and INDIAN Tees, and carry the largest assortment of any House in the Dominion.

Represented in Manitoba, Northwest Territories and British Columbia, by

D. C. MCGREGOR, - MCINTYRE FLOOR, WINNIPEG.

Andrew Allan, President. John McKechnie, Superintendent.
F. H. Brydges, Vice-President. H. H. Williams, Sec.-Treas.

THE VULCAN IRON COMPANY, OF MANITOBA, (LIMITED),

BRASS & IRON FOUNDERS,
Light and Heavy Forgings, Engine and Boiler Works
Millwrighting.

GENERAL BLACKSMITHING,
All Kinds of Machinery.

POINT DOUGLAS AV., WINNIPEG

J. Kuhn & Son,

—DEALERS IN—

BUTTER, CHEESE AND EGGS
FLOUR AND FEED

And Produce Generally. Agents for the
GOLD SPOON BAKING POWDER.

Consignments of Produce and other Goods Sold on Commission and Prompt returns made.

Catharine Block, Alexander St. West
WINNIPEG, - MANITOBA.

Hodgson, Sumner & Co.

—IMPORTERS OF—

British, French, German and American Dry Goods, Small Wares and Fancy Goods.

347 and 349 St. Paul Street, MONTREAL.

Represented: J. McLEOD, HOLIDAY & BRO.
Commission Merchants, 54 Portage Avenue,
WINNIPEG, MAN.

LYMAN, KNOX & CO.

WHOLESALE DRUGGISTS,
MONTREAL.

—GENERAL AGENTS FOR—

GALIFORNIA FIG SYRUP.

JOHN McPHERSON & CO.

MANUFACTURERS

FINE SHOES

HAMILTON, ONT.

ROYAL



CROWN SOAP.

Positively Pure; Won't Shrink Flannels, nor hurt hands, face or finest fabrics.

POUND BARS. TRY IT.

MILL FOR SALE

AT REASONABLE PRICE AND EASY TERMS.

100 Barrel Roller Mill and a 20,000 Bushel Elevator.

Located in one of the best Wheat-Raising Districts of the Northwest.

Failing health of himself and family induces present owner to sell, and he will dispose of all at reasonable figures, taking a moderate payment down and the balance in yearly instalments of \$1,000, purchaser paying 8 per cent per annum interest on balance unpaid.

For further particulars apply to the office of THE COMMERCIAL, Winnipeg.

London Fur Sales.

Following are the prices realized at the late fur sales of the Hudson's Bay Company at London, England:—

Silver Fox: Yorkfort—Dark, firsts, £60; do., middling, £17; do., pale, £12; seconds, £10; thirds, £5. Moose River—Dark, firsts, 27; do., middling 15; do., pale, 11; seconds, 9.10; thirds, £6. Esquimaux Bay—Darks, firsts, 60; do., middlings, 14; do., pale, 14; seconds, £11.10s. Northwest—Dark, firsts, 18; do., middling, 13; do., pale, 12; seconds, £10. Canada—Dark, firsts, 25; do., middling, 14; do., pale, 11; seconds, £7.10s.

Blue Fox: Yorkfort—Large, 100; small, 50; thirds, 20 shillings.

White Fox: Yorkfort—Firsts 23.6; seconds, 14.3; firsts, greasy, 15.6; seconds, do., 11.6; thirds, 7.3; fourths, 3.3 shillings. Moose River—Firsts, 20.9; seconds, 15.6; firsts, greasy, 14.9; seconds, do., 10.6; thirds, 8.3 shillings. Esquimaux Bay—Firsts, 24; seconds, 15.9; thirds, 6.9; fourths, 3.6 shillings.

Kitt Fox: Yorkfort—Firsts, 3 shillings.

Red Fox: Yorkfort—Firsts, 12; seconds, 10; pale, 10.9; low red, 10.9; greasy, 10 to 12; thirds, 6.3; fourths, 5.6 shillings. Moose River—Firsts, 13.9; seconds, 11.9; pale, 10.6; low red, 11.9; greasy, 11.6; thirds, 6.6; fourths, 3.3 shillings. Canada—Firsts, 11.6; seconds, 10.3; pale, 12.3; low red, 10.6; thirds, 5.9; fourths, 3 shillings. Esquimaux Bay—Firsts, 16; seconds, 13.6; pale, 12.3; low red, 12.6; thirds, 7.3; fourths, 3 shillings. Northwest—Firsts, 11 shillings.

Cross Fox: Yorkfort—Fine, 100; seconds, 54; pale, 28; thirds, 25; fourths, 7 shillings. Moose River—Firsts, 115; seconds, 64; pale, 30; thirds, 29; fourths, 7 shillings. Canada—Firsts, 100; seconds, 41; pale, 27; thirds, 17 shillings. Esquimaux Bay—Firsts, 130; seconds, 66; pale, 35; thirds, 26 shillings. Northwest—Firsts, 44; seconds, 40; thirds, 24 shillings.

Mink: Yorkfort, large, 6; small, 4.6; seconds, 4.3; thirds, 1.9; fourths, 1.5 shillings. Moose River, large, 6.6; small, 5.9; seconds, 4.6; thirds, 2.1; fourths, 1.7 shillings. Canada, large, 6.3; small, 5; seconds, 4; thirds, 1.4; fourths, 1.4 shillings. Esquimaux Bay, large, 10; seconds, 5; thirds, 2.2 shillings. Northwest, large, 5.3; seconds, 2.8 shillings.

Black Bear: Yorkfort, firsts, rough, 165; low, 90 to 130; wooley, 90 to 148; seconds, rough, 120; thirds, 30; fourths, 5; firsts, small, 60, do., seconds, 35; do., thirds, 10; do., fourths, 1.6 shillings. Moose River and Canada, firsts, rough, 170; seconds, do., 60; thirds, 30; firsts, small, 65; do., seconds, 37; do., thirds, 12; do., fourths, 1; low, rough, 112 to 150; wooley, 90 to 127 shillings. Northwest, firsts, rough, 165; do., seconds, 90; do., thirds, 35; seconds, small, 35; do., thirds, 10; do., fourths, 1 shilling; low, rough, 35 to 120; wooley, 80 to 125 shillings.

Brown Bear: Yorkfort, firsts, rough, 235; low, 140; wooley, 130 to 155; thirds, 23; small, rough, 21; small, thirds, 5; do., fourths, 1 shilling.

Gay Bear: Yorkfort, firsts, 80. Northwest, 55 shillings. White Bear, Yorkfort, 95; low, 70; seconds, rough 70; small, rough, 15 shillings.

Lynx: Yorkfort, large, 23.6 to 25; middling, 13.9; small, 11; low, 10 to 11; open, 14.6; seconds, large, 15; do., small, 9.6; do., open, 11.6; thirds, open, 6.9 shillings. Moose River, fine,

11.0 to 25.7; small, low, 10.3; thirds, 9.3; fourths 2.9 shillings. Esquimaux Bay, large fine, 24.3; small, do., 13; large, low, 21; middling, do., 16; small, do., 11.6; second, large, 15.6; thirds, 10.9 shillings. Canada, large, 22 to 25.9; middling, 14.9 to 16.9; small, 11.9 to 13.3; low, 11.6 to 19.7; seconds, 10.3 to 15.6; thirds, 9.9 shillings. Northwest, large, 23.9; middling, 13.9; seconds; 12.6 to 14.6; thirds, 9.6 shillings.

Otter: Yorkfort, firsts, large, 44; brown, 45; small, 31.4; cubs, 31; seconds, large, 38; small, 29.6; thirds, large, 23; small, 17; cub, 10 shillings. Moose River, firsts, large, 48; small, 41.4; seconds, large, 42.9; small, 33; thirds, large, 26; small, 22; cubs, 11 shillings. East Maine, firsts, large, 63; small, 60; seconds, large, 50; small, 44.6; thirds, large, 25.9; small, 19 shillings. Fort Garry and Little Whale River, firsts, large, 74; seconds, large, 58; thirds, large, 29 shillings. Esquimaux Bay, firsts, large, 61; small, 55; seconds, large, 54.6; small, 46 shillings. Northwest, firsts, large, 37; seconds, large, 38; thirds, large, 19 shillings. Canada, firsts, large, 14; small, 40; seconds, large, 39; small, 35; thirds, large, 23; small, 18 shillings.

Marten: Yorkfort, large, 14; small, 9.3; pale, 9; seconds, 8.9; thirds, 6.3 shillings. MacKenzie River, large, 12.3; small, 9.3; pale, 8.3; seconds, 7.6; thirds, 6 shillings. Moose River, large, 13.6; small, 9; pale, 7.9; seconds, 6.6; thirds, 6 shillings. East Maine, large, 22.6; small, 13.3; pale, 10.6; seconds, 9.6; thirds, 7.6 shillings. Fort Garry and Little Whale River, large, 28; small, 21; pale, 11.3; seconds, 10.9; thirds, 8.6 shillings. Bursamis, large, 15.6; small, 11.9; pale, 9.3; seconds, 9; thirds, 7.3 shillings. Canada, large, 8.9; small, 6.9; pale, 5.9 shillings. Esquimaux Bay, large, 24; small, 16.3; pale, 11 shillings. Northwest, large, 12.9; small, 10.9; pale, 7.9; seconds, 7; thirds, 6 shillings.

Badger: Yorkfort, 13 to 210 pence.

Fisher: Yorkfort, large, 36; small, 37; pale, 23 to 23.4; seconds, 25; thirds, 17.8 shillings. Canada, large, 38.9; small, 38; pale, 22 to 24; seconds, 23; thirds, 19 shillings. Moose River, large, 49; small, 45; pale, 22 to 25; seconds, 23; thirds, 19 shillings. Northwest, large, 36; seconds, 24; thirds, 21 shillings.

Wolf: Yorkfort, large, 28; small, 6.9; seconds, 4 to 7.9; white, 65; black, 75 shillings. Esquimaux Bay, black, 70 shillings.

Wolverine: Yorkfort, open, 23; seconds, 13; cased, 14; seconds, 10.2 shillings. Esquimaux Bay, open, 13 to 23 shillings. Northwest, open, 12 to 16; cased, 10 to 14 shillings.

Musk Ox: Yorkfort, firsts, 117; small, 35 to 60; seconds, 75; thirds, 45; fourths, 6 shillings.

Skunk: Yorkfort, cased, 3 to 5.3; open, 3 to 4.9 shillings. Canada, cased, 1.6 to 3.6; open, 1.9 to 4 shillings.

Hair seals from 22 to 27 pence.

LAMPSON & CO'S SALES.

At C. M. Lampson & Co's sales the following prices were realized:—

Black Bear. 1 Army, 95 to 175; seconds, 65 to 135; thirds, 10 to 45 shillings; fourths, 60 to 90 pence. Rough, medium and small, firsts, 90 to 130; seconds, 70 to 110; thirds, 20 to 38; cubs and yearlings: Firsts, 65 to 105; seconds, 37 to 95; thirds, 15 to 32; fourths, 3 to 7 shillings. Brown Bear. 1 Army, 85 to 130; seconds, 47 to 85; thirds, 9 to 35; fourths, 2 to 5; medium and small rough: Firsts, 50; seconds, 40 to 43. Cubs and yearlings: Firsts, 50 to 57; seconds, 18 to 32; thirds, 2 to 5 shillings. Grey Bear,

1 Army, 70 to 100; seconds, 27.6 to 70; thirds, 12.6 to 25; fourths, 5; medium and small 20 to 85; thirds, do. 25; cubs and yearlings, 24 to 50 shillings. Marten, Labrador and Eastern, good color: Firsts, 25 to 43, seconds, 12 to 27; small, 15 to 27; firsts, pale, 8 to 11; seconds, 6.0 to 9.0 extra dark, 34 to 82 shillings. United States and Canada, good colors: Firsts, 93 to 114; seconds, 75 to 94; thirds, 45; fourths, 51; small, 57 to 63; firsts, pale, 60 to 90; seconds, do., 48 to 75 pence.

Muskrats: Halifax and Nova Scotia: Firsts, good, 13 to 16; seconds, 12 to 13; Ritts, 64; small seasoned seconds, 7½ to 8½; damage, 7 to 8½ pence. Minnesota: Firsts, good, 14; seconds, 8½ to 12; Kitts, 4½ to 5½; small, seasoned, 6½ to 8½; pale, seconds, 6 to 9½; pale and poor, kitts, 2½ to 4½; pale and poor, small, seasoned, 6 to 6½ pence. New Jersey: Firsts, good, 11½ to 13; seconds, 9½ to 11; kitts, 6; small, seasoned, 7 to 7½; pale and poor seconds, 6½ to 8½; kitts, 4½ pence.

Lynx: Canada: Firsts, 24 to 25; seconds, 14 to 15 shillings; thirds, 66 pence; medium and small: Firsts, 11 to 16 shillings; Northwest, Firsts, 23 to 26; seconds, 14 to 15; thirds, 5 to 6 Medium and small: Firsts and Seconds, 10.6 to 12 shillings.

Raccoon: Western and Northwestern: Firsts, 60; seconds, 42 to 51; thirds, 21 to 39; fourths, 10, medium and small, firsts, 45 to 48; small, seasoned, 31; large, do., 99 pence. Northwestern and Illinois: Firsts, 72 to 81; seconds, 42 to 48; thirds, 18 to 29; fourths, 11; medium and small, 48 to 64; large, dark, 123 to 252; small, dark, 72 to 156 pence. Southwest, Kentucky, etc., firsts, 39 to 57; seconds, 27 to 37; thirds, 13 to 21; fourths, 8 to 11; pale, firsts, 33 to 41; pale, seconds, 22 to 27; medium and small, 26 to 37; small, seasoned, 24 to 29; large, dark, 72; small, do., 45 pence. Southern, firsts, 27 to 30; seconds, 21 to 27; thirds, 13 to 15; fourths, 6 to 8; pale, 19 to 28; medium and small, 27 to 28; medium and small, pale, 22 to 23 pence.

Mink: Halifax, dark, firsts, 132 to 147; seconds, 84 to 87; thirds, 33 to 37; pale, firsts, 57 to 63; seconds, 42 to 48; small, good, colored, 72 to 78; small, pale, 48 pence. Eastern, dark, firsts, 75 to 111; seconds, 48 to 75; thirds, 23 to 32; fourths, 9 to 10; firsts, pale, 44; small, good color, 48 to 72; small, pale, 33 pence. Michigan, Wisconsin, etc., dark, firsts, 51 to 72; seconds, 36 to 54; thirds, 14 to 27; fourths, 8 to 11; firsts, pale, 34 to 42; seconds, 26 to 29; small, pale, 30 to 36 pence. Southwestern, dark, firsts, 29 to 41; seconds, 17 to 36; thirds, 13 to 18; fourths, 5 to 8; firsts, pale, 25 to 36; seconds, do., 20 to 27; firsts, small, 31 to 36 pence. Red River, dark, firsts, 60; seconds, 47; thirds, 25; firsts, pale, 42; seconds, 24; firsts, small, 41 pence.

Skunk:—Cased, good skins; black, firsts, 99 to 114; seconds, 54 to 66; thirds, 24 to 26; fourths, 3 to 4 pence. Cased, little stripe, firsts, 75 to 90; seconds, 44 to 66 pence. Cased, large stripe, firsts, 39 to 51; seconds, 28 to 47; small, 28 pence; cased, white, firsts, 17 to 33; seconds, 11 to 26; smalls, 8 pence.

Beaver:—Canada and Labrador: firsts, large, 43 to 47; seconds, large, 39 to 41, firsts and seconds, middling, 30; extra dark, 55 shillings. Alaska and Columbia; firsts, large, 43 to 45; seconds, large, 34 to 37; thirds, large, 16; firsts, middling size, 24; seconds, do., 20; firsts, small, 15 to 16; seconds, small, 14 to 15; extra dark, 47 shillings. Southwest, firsts, large, 45

to 47; seconds, large, 36 to 37; thirds, large, 24; firsts, Middling, 26; seconds, do., 21; firsts, small, 18; seconds, small, 15 shillings.

Otter : Alaska—Firsts, good, 32 to 38; seconds, do., 23 to 24; thirds, do., 15 to 17; firsts, brown and pale, 32 to 34; seconds, do., 20 to 22; thirds, do., 13; firsts, small, seasoned, 22 to 23; seconds, do., 15 to 17; thirds, do., 7 to 11 shillings. Nova Scotia, Labrador and Halifax—Firsts, good, 60 to 86; seconds, do., 44 to 53; thirds, 14 to 20; firsts, brown and pale, 37 to 40; seconds, 23 to 24; thirds, 17; firsts, small, seasoned, 17 shillings. West and Southwest—Firsts, good, 28 to 31; seconds, do., 21 to 23; thirds, 10 to 14; firsts, brown and pale, 28; firsts, small, seasoned, 18; thirds, do., 7 shillings. Southern—Firsts and seconds, good, 20; firsts and seconds, brown and pale, 20; firsts and seconds, small, seasoned, 15 shillings.

Silver Fox—Firsts, 9 to 62; seconds, 3 to 15; thirds, 2 to 24; fourths, 10 to 20 shillings.

Red Fox : Alaskas—Firsts, good color, 150 to 168; seconds, 120 to 132; thirds, 66 to 90 pence; firsts, pale, 126 to 138; seconds, do., 90 to 114; thirds, do 69 to 84 pence; large middling color, 168 to 180; large, pale, 100 pence; Halifax and Labrador—Firsts, good color, 150 to 168; seconds, do., 114 to 126; thirds, 72 to 96; fourths, 39; low and middling color, 93 to 114 pence. Canada—Firsts, good color, 156; seconds, do., 103; firsts and seconds, pale, 126 pence. United States—Good firsts, 108 to 156; seconds, 96 to 108; thirds 60 to 81; fourths, 36 to 54; firsts, pale, 108; low and middling color, 81; pale, 75 to 87 pence. United States, Eastern—Firsts, 120 to 132; seconds, 102 to 108; thirds, 66 to 75; fourths, 42 to 45; firsts, pale, 84 to 126; seconds, pale, 87 to 114; low and middling, 90 to 96 pence. United States, Southern—Firsts, 126; seconds, 72 to 92; thirds, 48 to 60; firsts, pale, 120; seconds, do., 90 pence. United States, Northwest—Firsts, 126; seconds, 102 to 108; thirds, 72 to 78; fourths, 27 to 39; firsts, pale, 102 to 114; low and middling, 87 to 96 pence.

Cross Fox : Alaskas—Firsts, 30 to 55; seconds, 27 to 40; thirds, 15 to 27; firsts, pale, 25 to 43; seconds, pale, 20 to 32; inferior, 9 to 18; fine, extra dark, 52 to 70 shillings. Halifax, Labrador and Nova Scotia—Firsts, 55 to 65; seconds, 52 to 45; thirds, 22 to 35; firsts, pale, 37; inferior, 14; fine extra dark, 75 shillings. Columbia—Firsts, 50; seconds, 42; thirds, 27; firsts, pale, 38; seconds, pale, 35; inferior, 10 to 20; fine extra dark, 85. Russian—Firsts, 50 to 22; seconds, 17 to 20; thirds, 11; firsts, pale, 17; seconds, pale, 15; inferior 5 shillings.

Blue Fox : Alaskas—Good firsts, 115 to 165; seconds, do., 85 to 130; thirds, do., 40 to 55; firsts, extra large, 140; seconds, do., 100 shillings. Alaskas—Brown, firsts, 95 to 130; seconds, 70 to 110; firsts, extra large, 120 to 145; seconds, do., 85 to 120. Alaskas—Pale, firsts, 80 to 115; seconds, do., 60 to 90; extra large, 45 to 55 shillings.

Gray Fox : Western—Firsts, cased, 36 to 45; seconds, do., 18 to 27; thirds, do., 6 to 10; firsts, open, 30 to 33; seconds, do., 18 to 33 pence. Southern—Firsts, 33 to 37; seconds, do., 18 to 33; thirds, 7 to 10; firsts, open, 27 to 33; seconds, 18 to 24 pence.

Kitt Fox—Firsts, 30; seconds, 24 to 29; thirds, 3 to 7 pence.

Opossum—Firsts, cased, 26 to 30; seconds, do., 4 to 6; thirds, 3 to 6; small, do., 7 to 10; small, seconds, do., 2 to 3; firsts, open, 13 to

17; seconds, do., 5 to 6; small, open, 8 to 9; seconds, do., 2 pence. Southern—Firsts, cased, 13 to 14; seconds, 3 to 5 pence.

Wild cat : Canada—Firsts, cased, 102; seconds, do 54 to 63 pence. Western, etc.—Firsts and seconds, open, 33 to 52. Southern—Firsts and seconds, open, 20 to 25; small, 11 to 21 pence.

House Cat—Black, 18 to 19; blue, 3; mottled, 5 to 11; kitts, 2 pence.

Wolves—Large, firsts, 63 to 147; seconds, 36 to 51; thirds, 12; firsts, small, gray, 36 to 105; seconds, do., 24 to 42; thirds, 11 to 18 pence; firsts and seconds, extra large, 40; do, do., blue, 45 shillings.

Wolverine—Firsts, 22 to 31; seconds, 13 to 15; thirds, 4 to 5; firsts, pale, 12 to 16; seconds, 10 shillings.

Sea Otter—Large, black, silvery, 72 to 95; black, little silvery, 58 to 80; black, no silver, 31 to 49; dark and silvery, 58 to 76; dark, little silvery, 39 to 59; dark, no silver, 29 to 37; pale and silvery, 63; pale, little silver, 38; pale, no silver, 28 to 34; cubs, fair, 5 to 10; poor, 3 to 7 pounds. Small, black and silvery, 31 to 41; black and little silver, 23 to 29; black, no silver, 17 to 19; dark and silvery, 24 to 31; dark and little silver, 17 to 20; dark, no silver, 14 to 17; pale and silvery, 28; pale and little silver, 18 to 22; pale, no silver, 11 to 10; yellowish and silvery, 32 to 38; yellowish, little silver, 16 to 27; yellowish, no silver, 10 to 12 pounds.

Badger—Good to medium, 42 to 75; inferior, 12; poor, 1 to 2 pence.

Fisher : Northern—Firsts, 39 to 55; seconds, 29 to 32; thirds, 13 to 17; firsts, pale, 23 to 25; seconds, do., 19 to 21; best, thick pelted, 36 to 48; do., pale, 20 to 26 shillings. Western and Northwest—Firsts, 36 to 45; seconds, 27 to 32; thirds, 11 to 12; firsts, pale, 22 to 26; seconds, do., 18 to 20; best thick pelted, 36 to 52; pale, do., 20 to 22. Alaskas and Columbia—Firsts, 38 to 43; seconds, 25 to 26; thirds, 12 to 13; firsts, pale, 22; seconds, do., 18; best thick pelted, 30 to 37; pale, do., 17 to 23 shillings.

Russian Sable: Kamtschatka—Dark, firsts, large, 95 to 115; seconds, large, 47 to 55; good brown, firsts, 40 to 51; seconds, do., 32 to 40; brown, firsts, large, 32 to 37; seconds, do., 17 to 30; pale brown, large, firsts, 25 to 30; second, do., 20; dark brown and silvery, large, firsts, do 145; do., seconds, 50 to 85; good brown, silver, large, 42 to 75; do., seconds, 27 to 42; brown, silvery, 35 to 45; do., seconds, 15 to 32; pale brown and silvery, 27 to 33; do., seconds, 20 to 28 shillings. Kamtschatka—dark, firsts, small, 42 to 48; seconds, do., 35 to 50; dark and silvery, 57 to 75; seconds, do., 35 to 45 shillings. Oshotsk—dark, large, firsts, 135; seconds, do., 58; good brown, firsts, 60; seconds, do., 33; dark silvery, firsts, 105 to 350; seconds, do., 52 to 155; good brown, silvery, 40 to 180; seconds, do., 32 to 95; small, do., 20 to 65; pale brown, silvery, firsts, 65; seconds, do., 45; extra pale, do., 25 to 35 shillings. Jakutsk—dark, firsts, large, 300; seconds, 80; good brown, large, firsts, 180; seconds, 50; dark and silvery, large, firsts, 135 to 210; seconds, 85 shillings.

Chinchilla: Best, 95 to 100 shillings per dozen; bastard, good, 14 to 29 shillings; poor, 42 to 132 pence.

Hair Seals: Extra large spots, 40 to 47; large spots, 37 to 45; middling spots, 35; small and fine, 57 pence.

Copper Island Seals (52,765 skins): Middlings, 43 to 64.5; middlings and smalls, 70.3; smalls, 47 to 62.7; large pups, 48.8 to 60.4; middling pups, 47.8 to 61.6; small pups, 45.10 to 56.11; extra small, 41.1 to 53.3 shillings.

Cape Horn Seals (2,219 skins): Middlings and smalls, 51.3; smalls, 51; large pups, 48; middling pups, 44; small pups, 37.6; extra small pups, 33.9; wigs, 50 shillings.

Cape of Good Hope Seals (1,032 skins): Middlings, 42; large pups, 35.6; middling pups, 26; small pups, 18; extra small pups, 17; smalls, 43 shillings.

A neat little pamphlet has been received at this office issued by Keir & Armstrong, dyers, Winnipeg, in which they give much useful information to those who want anything in their line.

The *Free Press* is responsible for the following: It is stated negotiations by an English syndicate for the purchase of Ball & Co's. organ factory, of Guelph, has been completed and the price was \$3,000,000.

The *Colonist*, published at Winnipeg, is evidently prospering. The journal has been enlarged twice within a few months, and is now a forty page paper. The *Colonist* is published in the interest of the settlement and development of Western Canada.

It is stated that one of the objects of A. F. Gault's trip to England is to dispose of all the Canadian cotton mills to an English syndicate, to be capitalized for about ten million dollars. The managing director of the mills states there is very little likelihood of the plan being consummated, although it would be very desirable.

The Canada Settlers Loan & Trust Company has issued its prospectus at London, Eng., with a share capital of half a million pounds sterling. The object is to conduct business in Manitoba and the Territories as a trust and loan company. The directors state that loans will be made in the West on high class securities at from six to eight per cent. The company specially hopes to do business under the act permitting mortgages on free grant lands.

The Philadelphia *Press* says of the iron trade:—"The past week has not developed much improvement in iron trade, although there is a steadier feeling and a growing conviction that prices are bottom. Since the first of the month lower quotations have been made for some articles than at any time since last summer, but they are only following the lead of pig iron, so that it was not quite unexpected; but in a general way it is considered that the storm is over, and that when adjustments of prices on various specials are completed the market will soon rally."

It is reported in an eastern paper that a Winnipeg florist and seedsman has got into trouble with the customs. Anxious to take advantage of cheap rates offered by an American printing firm, so the report states, he had his annual catalogues printed in the United States, and to save the duty sent a list of his patrons to the office of publication from which the single pamphlets were to be mailed. Thus the Dominion authorities lost the customs duties and postage. Had the catalogues been sent to Winnipeg in bulk, they would have been assessed eight cents per pound and 26 cents ad val. duty. The officials are investigating and it may prove an expensive pamphlet for the florist.

The Manufacturers' Life AND Accident Insurance Co's

Head Office - TORONTO.

Combined Authorized Capital - - \$3,000,000

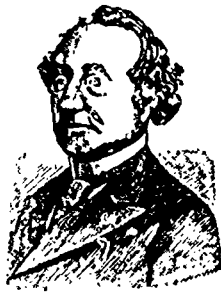
Incorporated by Special Act of the Dominion Parliament.
Full Government Deposit.

Absolute Security Offered in a Live, Prosperous and
POPULAR CANADIAN COMPANY.

PRESIDENT—SIR JOHN A. MACDONALD, P.C., G.C.B.
VICE-PRESIDENTS—George Gooderham, Esq. President of the Bank of Toronto.
—William Bell, Esq., Manufacturer, Guelph.
—S. F. McKinnon, Wholesale Merchant, Director of the Traders Bank.
JOHN F. ELLIS, MANAGING DIRECTOR.

WM. SCOTT, Provincial Manager, Winnipeg

AGENTS WANTED IN UNREPRESENTED DISTRICTS.



THE BARNUM WIRE & IRON WORKS OF ONTARIO

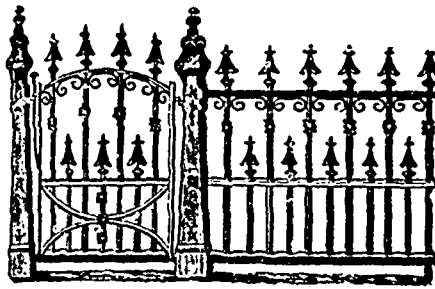
WALKERVILLE, Ont.

P. B. HOLMES, Sec'y and Manager. D. ALEXANDER, Treasurer.

—MANUFACTURERS OF—

Iron Fire Escapes,
Iron Stair Ways,
Iron Fences,
Cemetery Fences,
Bank and Office Railings,
Elevator Enclosures,
Architectural Metal Work.

We issue 12 Catalogues sent FREE to any address.
Designs and Estimates Furnished on Application.



S. A. D. FERTRAND,
OFFICIAL ASSIGNEE

For the Province of Manitoba, under the recommendation of the Board of Trade of the City of Winnipeg.

Insolvent and Trust Estates Managed with Promptness and Economy.
Special attention to Confidential Business Enquiries.

35 PORTAGE AVENUE EAST,
WINNIPEG, MAN.

TO BUTCHERS?
S. Walker & Co.
WINNIPEG.

Art Grease Works

Pays the highest price for Fat and Tallow All the Year Round.

PROMPT CASH PAYMENT.

WALKER HOUSE.

The most conveniently located Hotel in Toronto.
One Block from Union Railway Depot.
A first-class Family and Commercial House.

Terms from \$2 a Day

DAVID WALKER, PROPRIETOR.

Corner York and Front Sts., TORONTO, Ont.

DICK, BANNING & CO

MANUFACTURERS OF

Lumber, Shingles and Lath,

DOORS AND SASH.

MILLS AT KEEWATIN. OFFICE: OPPOSITE C.P.R.

PASSENGER DEPOT, WINNIPEG.

NOTHING LIKE LEATHER.

W. N. JOHNSON & CO.,

Importers and Dealers in

LEATHER AND FINDINGS.

Manufacturers of Harness, Collars, Boot and Shoe Uppers, etc.

25 and 27 Alexander St. West, Winnipeg

MUNROE & CO.,

Wholesale Dealers

Wines, Liquors and Cigars

OF THE BEST BRANDS

9th STREET, - BRANDON

Wm. Ferguson,

WHOLESALE

WINES- LIQUORS AND CIGARS

Permit Orders Promptly Executed

8th Street, - - Brandon

MONTREAL BRASS WORKS.

MONTREAL, P.Q.

Robt. Mitchell & Co

Proprietors, Manufacturers of

Gas Fixtures of Every Description,

Engineers, Plumbers,

Steam & Gasfitters Brass Goods,

Gas Meters and Automatic Fire Extinguisher

Grant, Horn & Bucknall,

PRODUCE

—AND—

Commission Merchants,

56 Princess Street, WINNIPEG

EXPORTERS

Of Flour, Butter, Eggs and Cheese.

Cheese Factory and Dairy Supplies.

Butter Tubs, Cheese Boxes, English Dairy Salt, Hansens' Danish Butter and Cheese Coloring.

RENNET EXTRACT

Agents for:—The British American Starch Company.

Dick, Bidout & Co., Toronto.

Cornish, Curtis & Greene.

Manufacturers of Cheese Factory and Creamery Outfits

ESTIMATES FURNISHED UPON APPLICATION.

BAGS

For Flour, Bran, Oats, etc.—Jute and Cotton.

Frost Proof and Cold Storage. Consignments Solicited.

Gillies' Series of Pens.

NO.	DESCRIPTION.	PER GROSS
202	Railway Pen, fine point.....	40c.
212	Peruvian Pen, medium point.....	70c.
222	Queen Pen, fine point.....	70c.
232	Ledger Pen, fine point.....	70c.
242	Beaver Pen, turned up point.....	65c.
252	Commercial Pen, medium point.....	60c.
262	Electric Pen, fine point.....	60c.
282	Public Pen, fine point.....	45c.
302	Falcon Pen, medium point.....	40c.
402	Lorne Pen, extra broad point.....	60c.
502	Windsor Pen, medium point.....	50c.

FOR SALE BY ALL STATIONERS.

WHOLESALE ONLY FROM

BUNTIN, GILLIES & CO.

Wholesale Stationers, Paper, Envelope and Account Book Manufacturers.

HAMILTON, ONTARIO.



FIVE POINTERS.

FIRST—That the biennial convale of Supreme Lodge Knights of Pythias, will convene at Milwaukee July 8th to 12th inclusive, 1890.

SECOND—That excursion tickets will be sold from all principal points in the West and Northwest to Milwaukee and return at rate of one fare.

THIRD—That the Wisconsin Central is the direct line from Minneapolis and St. Paul to Milwaukee, with two through trains each way, daily, and Pullman Vestibuled Sleeping Car service.

FOURTH—That as the camp ground is located directly on the Wisconsin Central passengers taking this line will have the advantage of being landed there.

FIFTH—That a circular giving detailed information will be sent free upon application to F. H. ANSON, General Northwest Passenger Agent, 19 Nicollet House Block, Minneapolis; CHAS. E. DIXON, City Passenger and Ticket Agent, 162 East Third Street, St. Paul, Minn., or to Louis ECKSTEIN, Assistant General Passenger and Ticket Agent, Milwaukee, Wis.

February 1st, 1890, the St. Paul, Minneapolis & Manitoba Railway and Branches became the

Great Northern R'y Line

With 3,300 miles of steel track it runs through 62 counties in Minnesota, North Dakota, South Dakota and Montana, reaching all principal points from St. Paul, Minneapolis, West Superior and Duluth.

It furnishes through close connections, the best and cheapest route to all points in Idaho, Utah, California, Oregon, Washington, British Columbia, Alaska, the Canadian Northwest and Manitoba.

It is the only American line west of Chicago having a track laid with 75 pound steel rail and owning its entire magnificent equipment of elegant Dining and Sleeping Cars, handsome Day Coaches and Free Colonist Sleepers.

It is the only line running through the great Milk River Reservation, with solid trains without change to Chinook, Benton, Great Fall, Helena and Butte. It has three lines in the Red River Valley, is the only line to the Turtle Mountains and has three lines in South Dakota.

It reaches the largest area of free Government land of agricultural value now remaining in the country. It is the principal line to Lake Minnetonka and the of Minnesota.

It is the direct route between St. Paul, Minneapolis, Anoka, St. Cloud, Duluth, West Superior, Fergus Falls, Crookston, Moorhead, Fargo, Grand Forks, Grafton, Winnipeg, Devils Lake, Ellendale, Aberdeen, Huron, Watertown, Sioux Falls and Sioux City. pleasure, fishing and hunting resorts of the Park Region.

For rates, tickets, maps and guides apply to
H. G. McMICKEN, General Agent,
 376 Main St., Corner Portage Avenue
F. I. WURNER, Gen. Ticket and Pass. Agt., St. Paul

THESE VESTIBULED TRAINS go in service May 15th.

Chicago, St. Paul, Minneapolis & Omaha Ry THE NORTHWESTERN LINE,

The best equipped line to CHICAGO, OMAHA AND KANSAS CITY

The ONLY line to Chicago running Pullman and Wagner Vestibuled Trains.

These Vestibuled Trains are limited as to time but not limited as to number of passengers. All classes of Passengers carried, with separate apartments for each class, and NO EXTRA FARES.

Trains Eastward will run as follows: Leave Minneapolis 6.50 p.m., St. Paul 7.30 p.m. Arrive Milwaukee 7.40 p.m.; Chicago 6.50 a.m.

The Sleeping Cars on these trains have been prepared especially for this service, and together with the Vestibuled Dining Cars, Coaches and Baggage Cars are the finest equipped trains of their class in the world.

TICKETS at LOWER RATES, and good on these Vestibuled Trains, can be secured at the following offices: St. Paul 159 East Third Street; Minneapolis, 13 Nicollet House Block; Duluth, 112 West Superior Street; also at St. Paul and Minneapolis Union Depots and at offices of connecting lines. Sleeping car accommodation secured in advance.

NOTE—The above advertised time is the actual running time, and the motto of the Northwestern Line is "ALWAYS ON TIME"

E. W. WINTER, General Manager
F. B. CLARKE, General Traffic Manager
T. W. TETSDALE, General Passenger Agent

Canadians, Attention!

Minneapolis & St. Louis Railway

Albert Lea Route

In connection with the Northern Pacific and St. Paul, Minneapolis & Manitoba Railways, will during the months of November, December, 1889, and January, 1890, run a series of

CHEAP EXCURSIONS

To Ontario and Quebec Points.
 \$40—FOR THE ROUND TRIP—\$40
 TICKETS GOOD 90 DAYS.

Avoid delays and detentions in Chicago and other points by purchasing your tickets via the "Albert Lea Route."

For detailed information call upon your nearest railway agent or write to
C. H. HOLDRIDGE,
 Gen. Ticket and Pass. Agt., MINNEAPOLIS.

Northern Pacific & Manitoba Ry.

Time Table taking effect Sept. 1, 1889.

North Bound			South Bound		
Daily except Sunday.	Daily Passenger	Miles from Winnipeg	STATIONS.		
No 55	No 53	0	Central Standard Time	No. 54	No. 56
1 30p	4 15p	0 A	Winnipeg	10 50a	4 30p
		1 0	Kennedy Avenue		
1 25p	4 07p	3 0	Portage Junction	10 57a	4 45p
12 47p	3 54p	9 3	St. Norbert	11 11a	5 08p
		15 3	Cartier		
11 32a	3 24p	23 5	St. Agathe	11 42a	6 05p
11 12a	3 16p	27 4	Union Point	11 50a	6 20p
10 47a	3 03p	32 5	Silver Plains	12 02p	6 40p
10 11a	2 48p	40 4	Morris	12 20p	7 03p
9 42a	2 33p	46 8	St. Jean	12 34p	7 35p
8 55a	2 13p	56 0	Letellier	12 55p	8 12p
8 15a	1 53p	65 0	W. Lynne	1 15p	8 50p
7 00a	1 40p	83 1	Pembina	1 25p	9 05p
	10 10a	268	Grand Forks	5 20p	
	5 25a		Winnipeg Junction	9 50p	
	8 35a		Minneapolis	6 35a	
	8 00p		St. Paul	7 05a	
Westward.			Eastward.		
	10 20a		Bismarck	12 35a	
	10 11p		Miles City	11 06a	
	2 50p		Helena	7 20p	
	10 50a		Spokane Falls	12 40a	
	5 40p		Pasco Junction	6 10p	
	6 40a		Portland	7 00a	
	6 45a		(via O. R. & N.)		
	3 15p		Tacoma	6 45a	
			via Cascade div.		
			Portland	10 00p	
			(via Cascade div.)		

PORTAGE LA PRAIRIE BRANCH.

Daily ex Su	STATIONS.	Daily ex Su
11 10a	0	4 00p
	Winnipeg	
	Kennedy Avenue	
10 57a	3 0	4 32p
10 24a	13 5	5 06p
10 00a	21 0	5 30p
	Portage Junction	
	Headingly	
	Horse Plains	
	Gravel Pit Spur	
9 15a	25 2	6 17p
8 52a	42 1	6 39p
8 25a	50 7	7 03p
8 10a	55 5	7 20p
	Eustace	
	Oakville	
	Assiniboine Bridge	
	Portage la Prairie	

MORRIS BRANDON BRANCH

Mixed Monday Thurs.	Miles from Morris	STATIONS.	Mixed Tuesday Friday
9 33p	0	Morris	2 30p
9 03p	10 0	Lowe's	1 52p
8 30p	21 2	Myrtle	1 15p
4 26p	25 9	Roland	12 59p
5 00p	33 5	Rosebank	12 28p
5 20p	39 0	Miami	12 05p
5 53p	49 0	Deerwood	11 45a
6 19p	54 1	Alta	11 10a
6 44p	62 1	Somerset	10 52a
7 30p	68 4	Swan Lake	10 02a
	74 0	Indian Springs	9 41a
	79 4	Maricappis	9 24a
	86 1	Greenway	9 00a
	92 3	Balder	
	102 0	Belmont	8 04a
	108 7	Hilton	7 36a
	120 0	Wawanesa	7 00a

Pullman Palace Sleeping Cars and Dining Cars on Nos. 53 and 54.

Passengers will be carried on all regular freight trains. Nos. 53 and 51 will not stop at Kennedy Avenue.

J. M. GRAHAM, General Manager, Winnipeg.
H. SWINFORD, General Agent, Winnipeg.

N. W. C. & N. Co's Railway TIME TABLE.

Read Down. GOING EAST No. 1 Daily.	STATIONS.	Read Up. GOING WEST. No. 2 Daily.
14 00 De.	Lethbridge	Ar 1 30
15 55	Woodpecker	23 35
18 50	Purple Springs	22 40
17 45 Ar	Grassy Lake	21 45
18 00 De	Cherry Coulee	20 55
18 50	Winnifred	19 55
20 55	Seven Persons	18 45
22 10 Ar	Dunmore	De 17 30

E. T. GALT, Manager, Lethbridge.
J. BAILEY, Supt., Lethbridge.

Manitoba and Northwestern Ry.

CHANGE OF TIME.

PASS Tuesday Thursday and Saturday	Miles from Portage	STATIONS.	PASS Monday Wednesday and Friday
LEAVE		Portage la Prairie	ARRIVE
10 15		Gladstone	14 15
18 00	35	Neepawa	12 50
19 00	61	Minnedosa	11 25
20 00	79		10 40
21 00	94	Rapid City	9 15
21 40	115	Shoal Lake	8 45
23 00	138	Birtle	7 45
23 33	155	Binscarth	6 47
24 15	168	Russell	6 10
24 45	180	Langenburg	5 40
1 45	206	Saltcoats	4 40
ARRIVE			LEAVE

Meals.
 *Trains for Binscarth leave Birtle Tuesdays and Saturdays only at 23.00; returning, leave Binscarth Wednesdays and Mondays only at 6.47. For Russell leave Birtle Tuesdays only at 23.00, returning leave Russell Wednesdays only at 6.10. For Langenburg and Saltcoats leave Birtle Saturdays only at 23.00; returning leave Saltcoats Mondays only at 4.40. For Rapid City leave Minnedosa Tuesdays, Thursdays and Saturdays at 20.10, returning leave Rapid City Mondays, Wednesdays and Fridays at 9.15.

Above trains connect at Portage la Prairie with trains of the Canadian Pacific Railway to and from Winnipeg. For information as to Freight or Passenger Rates apply to A. Macdonald, Assistant General Freight and Passenger Agent, Portage la Prairie, or to
W. R. BAKER, General Superintendent.

Northern Pacific And Manitoba Railway.

ARE SELLING THROUGH TICKETS To all Points in Canada and the United States at LOWER RATES THAN EVER

The Northern Pacific and Manitoba Railway run a DAILY TRAIN fully equipped with the latest improvements, including palatial Dining Cars and Pullman Sleepers, affording its patrons a quick, pleasant and interesting trip East, West and South. Close connections at all Union Depots.

All Baggage destined for points in Canada Checked Through, doing away with Customs Troubles.

Ocean Passage and Berths Secured To and from Great Britain and Europe. All first-class Steamship Lines represented.

Round Trip Excursion Tickets

To Pacific Coast, Good for Six Months.

For full information call on or write to any of the Company's Agents,
H. J. BELCH,
 City Ticket Agent, 285 Main St., Winnipeg.

HERBERT SWINFORD,
 General Agent, 456 Main St., Winnipeg.
J. M. GRAHAM, General Manager.