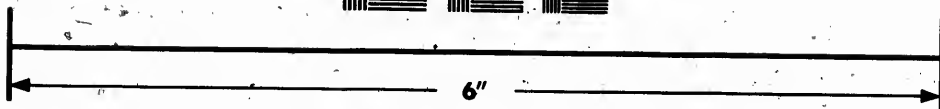
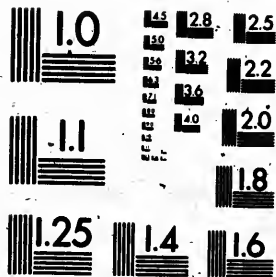


**IMAGE EVALUATION  
TEST TARGET (MT-3)**



**Photographic  
Sciences  
Corporation**

23 WEST MAIN STREET  
WEBSTER, N.Y. 14580  
(716) 872-4503

Canada

**CIHM  
Microfiche  
Series  
(Monographs)**

**ICMH  
Collection de  
microfiches  
(monographies)**



**Canadian Institute for Historical Microreproductions / Institut canadien de microreproductions historiques**

**© 1991**

Technical and Bibliographic Notes / Notes techniques et bibliographiques

The Institute has attempted to obtain the best original copy available for filming. Features of this copy which may be bibliographically unique, which may alter any of the images in the reproduction, or which may significantly change the usual method of filming, are checked below.

L'Institut a microfilmé le meilleur exemplaire qu'il lui a été possible de se procurer. Les détails de cet exemplaire qui sont peut-être uniques du point de vue bibliographique, qui peuvent modifier une image reproduite, ou qui peuvent exiger une modification dans la méthode normale de filmage sont indiqués ci-dessous.

- Coloured covers/  
Couverture de couleur
- Covers damaged/  
Couverture endommagée
- Covers restored and/or laminated/  
Couverture restaurée et/ou pelliculée
- Cover title missing/  
Le titre de couverture manque
- Coloured maps/  
Cartes géographiques en couleur
- Coloured ink (i.e. other than blue or black)/  
Encre de couleur (i.e. autre que bleue ou noire)
- Coloured plates and/or illustrations/  
Planches et/ou illustrations en couleur
- Bound with other material/  
Relié avec d'autres documents
- Tight binding may cause shadows or distortion  
along interior margin/  
La reliure serrée peut causer de l'ombre ou de la  
distorsion le long de la marge intérieure
- Blank leaves added during restoration may appear  
within the text. Whenever possible, these have  
been omitted from filming/  
Il se peut que certaines pages blanches ajoutées  
lors d'une restauration apparaissent dans le texte,  
mais, lorsque cela était possible, ces pages n'ont  
pas été filmées.
- Additional comments:/  
Commentaires supplémentaires:

- Coloured pages/  
Pages de couleur
- Pages damaged/  
Pages endommagées
- Pages restored and/or laminated/  
Pages restaurées et/ou pelliculées
- Pages discoloured, stained or foxed/  
Pages décolorées, tachetées ou piquées
- Pages detached/  
Pages détachées
- Showthrough/  
Transparence
- Quality of print varies/  
Qualité inégale de l'impression
- Continuous pagination/  
Pagination continue
- Includes index(es)/  
Comprend un (des) index
- Title on header taken from:/  
Le titre de l'en-tête provient:
- Title page of issue/  
Page de titre de la livraison
- Caption of issue/  
Titre de départ de la livraison
- Masthead/  
Générique (périodiques) de la livraison

This item is filmed at the reduction ratio checked below/  
Ce document est filmé au taux de réduction indiqué ci-dessous.

10X	14X	18X	22X	26X	30X
<input type="checkbox"/>	<input type="checkbox"/>	<input type="checkbox"/>	<input checked="" type="checkbox"/>	<input type="checkbox"/>	<input type="checkbox"/>
12X	16X	20X	24X	28X	32X

The copy filmed here has been reproduced thanks to the generosity of:

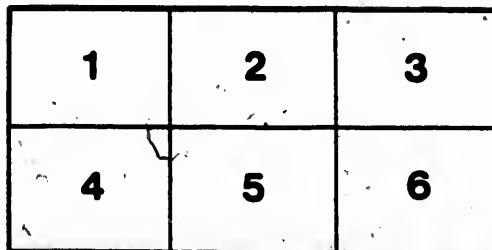
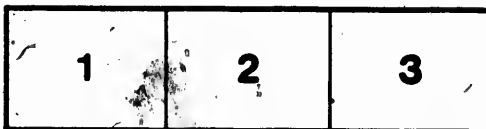
Library of the National Archives of Canada

The images appearing here are the best quality possible considering the condition and legibility of the original copy and in keeping with the filming contract specifications.

Original copies in printed paper covers are filmed beginning with the front cover and ending on the last page with a printed or illustrated impression, or the back cover when appropriate. All other original copies are filmed beginning on the first page with a printed or illustrated impression, and ending on the last page with a printed or illustrated impression.

The last recorded frame on each microfiche shall contain the symbol  $\rightarrow$  (meaning "CONTINUED"), or the symbol  $\nabla$  (meaning "END"), whichever applies.

Maps, plates, charts, etc., may be filmed at different reduction ratios. Those too large to be entirely included in one exposure are filmed beginning in the upper left hand corner, left to right and top to bottom, as many frames as required. The following diagrams illustrate the method:



L'exemplaire filmé fut reproduit grâce à la générosité de:

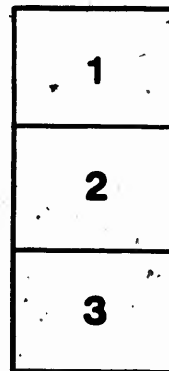
La bibliothèque des Archives nationales du Canada

Les images suivantes ont été reproduites avec le plus grand soin, compte tenu de la condition et de la netteté de l'exemplaire filmé, et en conformité avec les conditions du contrat de filmage.

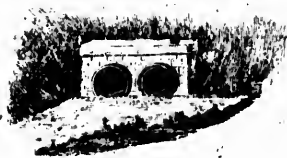
Les exemplaires originaux dont la couverture en papier est imprimée sont filmés en commençant par le premier plat et en terminant soit par la dernière page qui comporte une empreinte d'impression ou d'illustration, soit par le second plat, selon le cas. Tous les autres exemplaires originaux sont filmés en commençant par la première page qui comporte une empreinte d'impression ou d'illustration et en terminant par la dernière page qui comporte une telle empreinte.

Un des symboles suivants apparaîtra sur la dernière image de chaque microfiche, selon le cas: le symbole  $\rightarrow$  signifie "A SUIVRE", le symbole  $\nabla$  signifie "FIN".

Les cartes, planches, tableaux, etc., peuvent être filmés à des taux de réduction différents. Lorsque le document est trop grand pour être reproduit en un seul cliché, il est filmé à partir de l'angle supérieur gauche, de gauche à droite, et de haut en bas, en prenant le nombre d'images nécessaire. Les diagrammes suivants illustrent la méthode.



The Standard Drain Pipe Co.



St. Johns, N. D.

Manufacturers

# DOUBLE-STRENGTH CULVERT PIPES

Every one who has seen our Double Strength Culvert Pipes will be able to appreciate the superior strength, durability, and life span of our pipes. They are made of the best material and are more than able to stand up to any test.

For City Sewerage, where the pipes are laid on a firm bed bottom, they are highly recommended. The following table gives the thickness and capacity of these pipes:

Standard Pipe

Standard Pipe

## CERTIFICATES

PROMINENT CIVIC OFFICIALS AND EXPERTS

WILL BE FOUND ON INSIDE PAGE OF THIS SHEET



# —: CERTIFICATES:—

FROM P. W. ST. GEORGE, ESQ., C. E., CITY SURVEYOR, MONTREAL.

CITY SURVEYOR'S OFFICE,

Montreal, May 7th, 1888.

W. C. Trotter, Manager Standard Drain Pipe Company, St. Johns:

DEAR SIR,—I herewith send you two tests made with your Pipes, on the 7th of March and of 3rd of May, 1888:

TESTING VITRIFIED CLAY PIPES, MARCH 7, 1888.							SMOKE TEST, MAY 3, 1888.
Maker.	Size of Pipe.	No. Test.	Thickness.	Weight of Pipe in Lbs.	Breaking Wgt. in Lbs. per Square Inch.	Average.	Eight Lengths of Pipe and Three Junctions.
Standard Drain Pipe Comp'y	12 in 12 in	1 2	1 inch 1 inch	131 lbs 130 lbs	5764 lbs 5628 lbs	} 5096 lbs	ST. JOHNS Leaked at one small hole.
" " "	9 in 9 in	3	7/8 inch 7/8 inch	88 lbs 83 lbs 88 lbs	4812 lbs 4676 lbs 5804 lbs		} 5854 lbs

Yours truly,

P. W. ST. GEORGE, City Surveyor.

FROM P. W. ST. GEORGE, ESQ., C. E.

CITY SURVEYOR'S OFFICE,

MONTREAL, Feb. 23, 1891.

W. C. Trotter, Esq., Pres. Standard Drain Pipe Co., St. Johns:

DEAR SIR,—In reply to your letter of the 18th inst., asking me my opinion in reference to the strength and durability of the Vitrified Tile Pipes and Inverts furnished by your company to the Road Department of the City of Montreal, I beg to say that it has been good. The test made as to crushing strength was most satisfactory a proof of which is that we used in 1890:

Pipes of 4, 6, 9, 12 and 15 inch, . . . 12,175  
Bends, . . . . . 3,568  
Inverts, . . . . . 26,244

Yours truly,

PERCIVAL W. ST. GEORGE,

City Surveyor.

FROM R. P. FLEMING, ESQ., C. E.

Engineer to the Sanitary Association of Montreal, and M.C.S.C.E.

MONTREAL SANITARY ASSOCIATION,

10th May, 1888.

W. C. Trotter, Esq., Manager Standard Drain Pipe Co., St. Johns:

DEAR SIR,—I have pleasure in testifying that I have tested your Vitrified Drain, both as regards crushing strength and freedom from kiln cracks and other defects, and found them highly satisfactory in these respects. A drain consisting of eight lengths of straight pipe and three junction pieces was submitted to the crucial smoke test, which the pipes withstood in a most satisfactory manner; while a second drain of inferior pipes from another factory, when submitted to the same test, showed numerous defects in the pipes, through which the smoke escaped in large quantities.

I am, sir, yours very truly,

(Signed) RICHARD P. FLEMING,

M. Can. Soc., C. E., Engineer.

FROM J. A. U. BEAUDRY, ESQ., C. E.

Dominion Land Surveyor.

99 ST. JAMES ST., MONTREAL.

October 17th, 1884.

To the Standard Drain Pipe Company, St. Johns, P. Q.:

I have much pleasure in stating that the Tile Pipes we have received from you for the sewers of St. Cunegonde have proved superior in quality and appearance to those imported from Scotland.

(Signed) J. ALPHONSE BEAUDRY, C. E.,  
Engineer in charge.

FROM C. SPROATT, ESQ., C. E.

City Engineer, Toronto.

CITY ENGINEER'S OFFICE,

Toronto, Jan. 8th, 1889.

Robt. Carroll, Esq., Agent Standard Drain Pipe Co.:

DEAR SIR,—The city will accept St. Johns pipe on the several city works subject to the same terms and conditions as other grades of pipe which are used on the city works are subjected to.

Yours truly,

(Signed) C. SPROATT,  
City Engineer.

FROM J. L. STOKES, ESQ., C. E.

Engineer in charge Parkdale, (Toronto.)

OFFICE OF THE COUNTY ENGINEER AND SUPT. OF YORK ROADS,  
County Court House, Toronto, Dec. 10th, 1888.

To R. Carroll, Esq.:

DEAR SIR,—In reply to your question re St. Johns Sewer Pipes, I beg to say that in the town of Parkdale I used about 8000 feet of said pipe, (15 inch), the same having been furnished by you to Contractor Farly, and was well satisfied with them. I consider them a good, serviceable pipe.

I am yours, &c.,

(Signed) JOHN L. STOKES,  
City Engineer.

# CERTIFICATES. CONTINUED.

FROM RHODES, CURRY & CO.

Manufacturers and Builders.

AMHERST, N. S., Feb. 23, 1891.

To the Standard Drain Pipe Co., St. Johns, P. Q.:

In reply to your favor of 21st inst., we beg to say that we have been using for the past four years Drain Pipes, also Smoke Jacks and Wind-Guards, made by the Standard Drain Pipe Company of St. Johns, Que., and have had entire satisfaction with all goods we have used of above company's make.

Yours truly,

RHODES, CURRY & CO.

FROM JOHN MAGUIRE, ESQ.,

Private Drain Inspector

CITY ENGINEER'S OFFICE, TORONTO.

To the President Standard Drain Pipe Co., St. Johns?

DEAR SIR,—In reply to your request as to my opinion of your make of Drain Pipes, I have much pleasure in stating that I have used them and am using them daily. I consider them much better than any European Drain Pipe I have ever seen. As to their strength and durability, I have no hesitation in saying that I believe them to be unwearable and indestructible.

Respectfully yours,

(Signed) JOHN MAGUIRE,  
Private Drain Inspector, Toronto, Ont.

FROM T. & T. LEBLANC.

MONCTON, N. B., Feb. 23, 1891.

To the Standard Drain Pipe Company, St. Johns, P. Q.:

GENTLEMEN,—We beg to say that we have had thirteen years experience in constructing sewers, and in this time have used quantities of Salt-Glazed Pipes of various makes, and can recommend yours as being equally as good as any foreign make.

Yours respectfully,

T. & T. LEBLANC,  
Sewer Contractors.

FROM E. BERRYMAN, ESQ.,

Chief Engineer Quebec Central Railway Company.

OFFICE OF THE CHIEF ENGINEER,

Sherbrooke, Nov. 12, 1890.

W. C. Trotter, Esq., Manager Standard Drain Pipe Company,  
St. Johns, Que.:

DEAR SIR,—I have much pleasure in stating that during the past two years I have used your Culvert Pipes on this Railway, in many places under fifteen-foot banks. Up to this date they have not shown the least sign of failure, but are giving entire satisfaction. I shall therefore continue their use.

Yours very truly,

E. BERRYMAN,  
Chief Engineer.

FROM I. B. FUTOYVE, ESQ.,

Superintendent Central Vermont Railroad.

SUPERINTENDENT'S OFFICE,

St. Johns, P. Q., Feb. 17, 1892.

W. C. Trotter, Esq., Pres. Standard Drain Pipe Co., St. Johns:

DEAR SIR,—The Pipes that we purchased from you during last season for culverts on the northern division of our railroad have given good satisfaction, and we hope to give you further and larger orders during the coming season.

Yours very truly

I. B. FUTOYVE,  
Supt. C. V. R.R.

FROM E. W. RATHBUN, ESQ.

OFFICE OF THE KINGSTON, NAPANEE & WESTERN RY. CO.

Deseronto, Ont., March 7, 1891.

W. C. Trotter, Esq., President Standard Drain Pipe Company,  
St. Johns, P. Q.:

DEAR SIR,—Your favor of the 6th received. The Culvert Pipes furnished by your company for use on the Kingston, Napanee & Western R. R., have given excellent satisfaction. Should we require any more during the present season, we will gladly place the order with you.

Yours truly,

E. W. RATHBUN

FROM HIRAM DUNKIN, ESQ.

CAPE BRETON RAILWAY,

RESIDENT CHIEF ENGINEER'S OFFICE,

Hawkesbury, C. B., March 6, 1891.

W. C. Trotter, Esq., President Standard Drain Pipe Company,  
St. Johns, P. Q.:

DEAR SIR,—For answer to your letter of Feb. 16th, I have to say that your Pipes are and have been giving good satisfaction on this road. Some of these pipes are under 12 feet of embankment, and there is no failure as yet from crushing, nor do I think there will be.

Yours truly,

HIRAM DUNKIN.

FROM H. J. McGRATH, ESQ.,

DORCHESTER, N. B., Feb. 25, 1891.

To the Standard Drain Pipe Co., (Ltd.) St. Johns, Que.:

GENTLEMEN,—I recommend your make of Smoke Jacks for railway round-houses as being fully equal to any foreign make, also your manufacture of Salt-Glazed Pipes for sewers and culverts.

Yours, &c.,

H. J. McGRATH,  
Government Inspector of Masonry.

## THE STANDARD DRAIN PIPE CO.,

ST. JOHNS, P. Q.

# DOUBLE STRENGTH CULVERT PIPE

THE INTERCOLONIAL RAILWAY  
 CANADIAN PACIFIC  
 GREAT WESTERN  
 GREAT CENTRAL  
 CHICAGO & NORTH  
 WESTERN  
 GREAT EASTERN

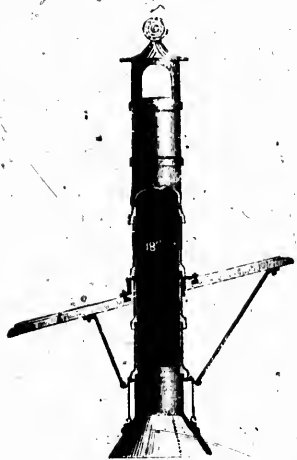


THESE PIPES ARE MADE OF  
 THE BEST PORTLAND CEMENT  
 AND ARE GUARANTEED TO  
 WITHSTAND THE HEAVIEST  
 LOADS OF TRAFFIC  
 AND TO RESIST THE  
 MOST ACIDIC SEWAGE  
 AND WATER.

SOLE AGENTS: THE STANDARD DRAIN PIPE CO., ST. JOHNS, P. O.

THRAWDEN, SKIFFS, & SONS, LTD., 100, QUEEN ST. W., TORONTO, CANADA

For any of the above mentioned works, apply to the nearest agent or to the



## FIRE-CLAY SMOKE JACKS

LOCOMOTIVE ROUNDHOUSES.

These Smoke Jacks are superior to iron, being non-corrosive, always clean, not affected by the weather, and cheaper. The top piece is a Windward.

The Standard Drain Pipe Co.,

ST. JOHNS, P. O.

New York, St. Johns.



