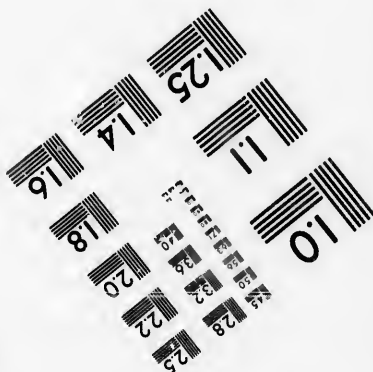
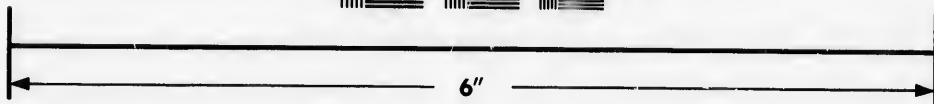
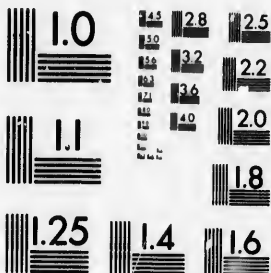


**IMAGE EVALUATION
TEST TARGET (MT-3)**



**Photographic
Sciences
Corporation**

23 WEST MAIN STREET
WEBSTER, N.Y. 14580
(716) 872-4503

Can

14 28
18 22
20 25

**CIHM/ICMH
Microfiche
Series.**

**CIHM/ICMH
Collection de
microfiches.**



Canadian Institute for Historical Microreproductions / Institut canadien de microreproductions historiques

10

© 1987

Technical and Bibliographic Notes/Notes techniques et bibliographiques

The Institute has attempted to obtain the best original copy available for filming. Features of this copy which may be bibliographically unique, which may alter any of the images in the reproduction, or which may significantly change the usual method of filming, are checked below.

L'Institut a microfilmé le meilleur exemplaire qu'il lui a été possible de se procurer. Les détails de cet exemplaire qui sont peut-être uniques du point de vue bibliographique, qui peuvent modifier une image reproduite, ou qui peuvent exiger une modification dans la méthode normale de filmage sont indiqués ci-dessous.

- Coloured covers/
Couverture de couleur
- Covers damaged/
Couverture endommagée
- Covers restored and/or laminated/
Couverture restaurée et/ou pelliculée
- Cover title missing/
Le titre de couverture manque
- Coloured maps/
Cartes géographiques en couleur
- Coloured ink (i.e. other than blue or black)/
Encre de couleur (i.e. autre que bleue ou noire)
- Coloured plates and/or illustrations/
Planches et/ou illustrations en couleur
- Bound with other material/
Relié avec d'autres documents
- Tight binding may cause shadows or distortion along interior margin/
La reliure serrée peut causer de l'ombre ou de la distorsion le long de la marge intérieure
- Blank leaves added during restoration may appear within the text. Whenever possible, these have been omitted from filming/
Il se peut que certaines pages blanches ajoutées lors d'une restauration apparaissent dans le texte, mais, lorsque cela était possible, ces pages n'ont pas été filmées.
- Additional comments: /
Commentaires supplémentaires:

- Coloured pages/
Pages de couleur
- Pages damaged/
Pages endommagées
- Pages restored and/or laminated/
Pages restaurées et/ou pelliculées
- Pages discoloured, stained or foxed/
Pages décolorées, tachetées ou piquées
- Pages detached/
Pages détachées
- Showthrough/
Transparence
- Quality of print varies/
Qualité inégale de l'impression
- Includes supplementary material/
Comprend du matériel supplémentaire
- Only edition available/
Seule édition disponible
- Pages wholly or partially obscured by errata slips, tissues, etc., have been refilmed to ensure the best possible image/
Les pages totalement ou partiellement obscurcies par un feuillet d'errata, une pelure, etc., ont été filmées à nouveau de façon à obtenir la meilleure image possible.

This item is filmed at the reduction ratio checked below/
Ce document est filmé au taux de réduction indiqué ci-dessous.

| | | | | | |
|--------------------------|-------------------------------------|--------------------------|--------------------------|--------------------------|--------------------------|
| 10X | 14X | 18X | 22X | 26X | 30X |
| <input type="checkbox"/> | <input checked="" type="checkbox"/> | <input type="checkbox"/> | <input type="checkbox"/> | <input type="checkbox"/> | <input type="checkbox"/> |
| 12X | 16X | 20X | 24X | 28X | 32X |

The copy filmed here has been reproduced thanks to the generosity of:

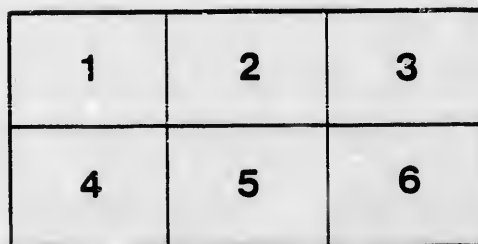
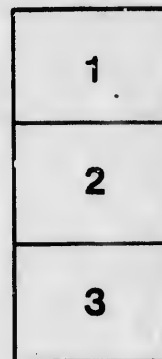
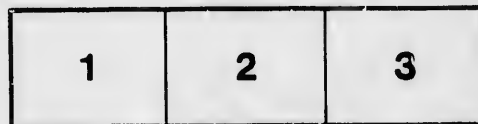
Seminary of Quebec
Library

The images appearing here are the best quality possible considering the condition and legibility of the original copy and in keeping with the filming contract specifications.

Original copies in printed paper covers are filmed beginning with the front cover and ending on the last page with a printed or illustrated impression, or the back cover when appropriate. All other original copies are filmed beginning on the first page with a printed or illustrated impression, and ending on the last page with a printed or illustrated impression.

The last recorded frame on each microfiche shall contain the symbol \rightarrow (meaning "CONTINUED"), or the symbol ∇ (meaning "END"), whichever applies.

Maps, plates, charts, etc., may be filmed at different reduction ratios. Those too large to be entirely included in one exposure are filmed beginning in the upper left hand corner, left to right and top to bottom, as many frames as required. The following diagrams illustrate the method:



L'exemplaire filmé fut reproduit grâce à la générosité de:

Séminaire de Québec
Bibliothèque

Les images suivantes ont été reproduites avec le plus grand soin, compte tenu de la condition et de la netteté de l'exemplaire filmé, et en conformité avec les conditions du contrat de filmage.

Les exemplaires originaux dont la couverture en papier est imprimée sont filmés en commençant par le premier plat et en terminant soit par la dernière page qui comporte une empreinte d'impression ou d'illustration, soit par le second plat, selon le cas. Tous les autres exemplaires originaux sont filmés en commençant par la première page qui comporte une empreinte d'impression ou d'illustration et en terminant par la dernière page qui comporte une telle empreinte.

Un des symboles suivants apparaîtra sur la dernière image de chaque microfiche, selon le cas: le symbole \rightarrow signifie "A SUIVRE", le symbole ∇ signifie "FIN".

Les cartes, planches, tableaux, etc., peuvent être filmés à des taux de réduction différents. Lorsque le document est trop grand pour être reproduit en un seul cliché, il est filmé à partir de l'angle supérieur gauche, de gauche à droite, et de haut en bas, en prenant le nombre d'images nécessaire. Les diagrammes suivants illustrent la méthode.

NOT A WORLD'S FAIR BUT NEARLY SO.



SEPT. 4TH TO 16TH 1893
TORONTO



THE
EVENT
OF THE
YEAR

Bibliothèque,
Le Séminaire de Québec
3, rue de l'Université,
Québec 4, QUE.

2/

O



SE

The
ture
eral
popu

Atte
of

Gen
Chil
Dog

PAT

PRESI
1ST V
2ND V

A. SM
W. S.
JAS.
R. J.
ALD.
JOS.

212 Expositions No 712

Official Programme

--- FOR ---

CANADA'S GREAT



Industrial Fair and Agricultural Exposition.....



TORONTO

SEPTEMBER 4TH TO 16TH, 1893

The Great Exposition of Live Stock, Manufactures, Art, Agricultural, Horticultural and Mineral Products of the Dominion, and the most popular gathering of the people during the year.

Attended by over 300,000 Visitors from all parts of Canada and the United States each year.

General Admission.....25 Cents
Children under 12 Years.....15 Cents
Dog Show and Museum.....10 Cents Extra

PATRONS : { HIS EXCELLENCY THE GOVERNOR-GENERAL
 HIS HONOR THE LIEUT.-GOVERNOR OF ONTARIO

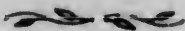
OFFICERS

| | |
|------------------------------|------------------------------|
| PRESIDENT, JNO. J. WITHROW | SOLICITOR, W. G. McWILLIAMS |
| 1ST VICE-PRES., WM. CHRISTIE | MANAGER AND SEC., H. J. HILL |
| 2ND VICE-PRES., DR. A. SMITH | TREASURER, J. P. EDWARDS |

BOARD OF DIRECTORS

| | | |
|---|------------------|-------------------|
| A. SMITH | W. K. McNAUGHT | W. B. HAMILTON |
| W. S. LEE | R. DAVIES | GEO. BOOTH |
| JAS. CROCKER | P. G. CLOSE | HON. JOHN DRYDEN |
| R. J. SCORE | W. E. WELLINGTON | R. W. ELLIOT |
| ALD. B. SAUNDERS | GEO. VAIR | ALD. J. O. ORR |
| JOS. DILWORTH | ALD. JNO. HALLAM | ALD. J. K. LESLIE |
| R. J. SCORE, CHAIRMAN SPECIAL ATTRACTIONS COMMITTEE | | |

To Our Patrons



The success which has attended the Toronto Industrial Exhibition in the past fourteen years and the liberal patronage which it has received from the public throughout the Dominion of Canada and the adjoining territory of the United States, has encouraged the management to still greater efforts to deserve the continued approval of the public. The new horse stables and cattle sheds on the most modern plans have been erected this year, and additional accommodation in many respects has been provided, and great improvements made. The entries in all departments are far in excess of previous years, and the special features provided will excel in variety and merit those of any former Exhibition. In fact nothing that zeal and genius can devise has been left undone to make the coming Fair the most attractive, instructive, and enjoyable yet held under the auspices of the Association.

The following programme had to be prepared before all arrangements for the special features, which will be provided, could be completed, and many others of much more importance will be added before the opening day.

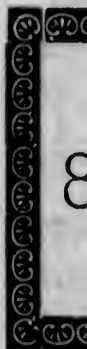
CONGRESS OF NATIONS

Exhibiting the Natives of Java, South Sea Islands, Dahomey, Lapland, Algeria, Persia, Egypt, Turkey, India, Japan, China, Morocco, etc., etc., with specimens of their handicraft, mode of living, etc., with the greatest collection of Oriental goods ever shown in this country.

GE

Will h
tural,

Far su



Poult
Pr

And a
impro

New

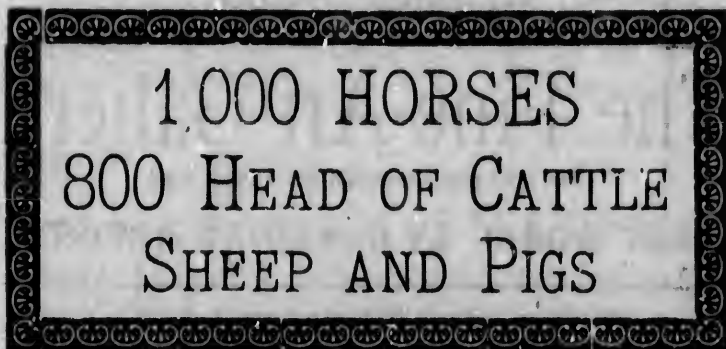
The v
TIVE
AND

THIS GREAT EXPOSITION

Will be a Grand Representation of the Immense Agricultural, Industrial and Mineral Resources of the

DOMINION OF CANADA

Far surpassing in magnitude and grandeur any similar display that has ever preceded it. There will be on exhibition over



And the greatest collection of

**Poultry, Agricultural, Horticultural and Dairy
Products, Machinery, Implements, Stoves
and Heating Appliances, Carriages,
Honey and Apiary Supplies,
Fine Arts, Ladies' and
Children's Work,**

And all classes of manufactures, embracing the latest improvements in all departments, ever brought together in this country.

New Ideas, The Latest Inventions, and Superior Attractions

The very best that **MECHANICAL SKILL AND INVENTIVE GENIUS** can devise, providing **INSTRUCTION AND AMUSEMENT FOR EVERY MINUTE OF THE DAY.**

Every Building

ON THE GROUNDS WILL BE CROWDED WITH
THE PRODUCTS OF THE

FACTORY, FARM, GARDEN AND ORCHARD

Forming the GREATEST EXHIBIT EVER MADE in
the Dominion of Canada.

The Fine Art Gallery

Will be replete with the latest and

BEST WORKS BY CANADIAN ARTISTS

THERE WILL BE

A MAMMOTH FREE EXHIBITION
OF NEW AND VARIED

SPECIAL :: ATTRACTIONS

EVERY DAY AND EVENING OF THE FAIR

OF UNUSUAL AND STRIKING NOVELTY

ADMITTED BY ALL TO BE THE

GREATEST AND BEST ENTERTAINMENT

IN THE WORLD

FOR THE SMALL PRICE OF ADMISSION

A
Already
before

GR

TR

Exhibi
grea

Excite
AN
TH

By th

A Co

Prof.

Prof.

GR

By all
latest
applic
bution
other r

AMONG THE SPECIAL FEATURES

Already provided and to which many others will be added before the opening of the Exhibition, are the following:

GREAT ARABIAN CIRCUS

INTRODUCING WONDERFUL

PERFORMANCES BY WILD

TROUPTS OF BEDOUIN ARABS

Exhibiting the characteristics of these natives of the great Orient, and giving vivid and startling pictures of Bedouin Life in the Desert.

EXCITING ● FEATS OF
AND ●
THRILLING ● HORSEMANSHIP

By the Champion Rough and Fancy Riders, illustrating "Horseback Life on the Western Plains."

A COLOSSAL CARNIVAL of EXCITEMENT and FUN

FIRST APPEARANCE IN C

Prof. W. Coup's Equescuriculu

—AND—

Prof. Buckley's Educated Horses

—ALL'ED WITH—

Prof. Freyer's Wonderful Troupe of Educated Dogs.

GRAND ELECTRICAL EXHIBITION

By all the principal Electrical Companies showing the latest inventions to which this great science has been applied, including all systems of electric lighting, distribution of power by electricity, cooking, heating and many other new features.

A RARE MUSICAL TREAT
HASSEY NATZY'S
Imperial Hungarian Gypsy Orchestra

In a select Musical Entertainment each day.

—GREAT—

MILITARY TOURNAMENT

—AND—



REALISTIC WAR SCENE
REPRESENTING THE
BATTLE OF TEL-EL-KEBIR

In which over 300 military will be engaged, with
Batteries of Artillery, Troops of
Cavalry, etc.

CONCLUDING WITH

Magnificent FIREWORK DISPLAYS

Introducing all the latest European Novelties in
Pyrotechnics, under the personal supervision
of Messrs. James Pain & Sons, of London,
England, and to be seen only at this
Exhibition.

Refined Specialty Entertainments

In front of the Grand Stand every afternoon and evening
by a host of the very best obtainable artists
in the specialty firmament.

IN

TH



Living
be

TH

MI

TH

From t
h

INST

AN

—A GREAT—

INTERNATIONAL DOG SHOW

With the finest collection of dogs ever exhibited
on this continent.

THE GREATEST MARVEL OF THE
PRESENT AGE, THE



WONDERFUL
TWO HEADED BOY



Living, eating and speaking many different languages, has
been engaged at a great cost, and will be exhibited
with many other curiosities in

THE EXHIBITION MUSEUM

The celebrated Siamese Twins were nothing
compared with this wonderful creation.

MISS AGNES CHARCOT

THE ONLY LADY EXPERT MESMERIST
IN THE WORLD

From the leading halls of London and Paris, will exhibit
her wonderful power over a human being while
under her control.

INSTRUCTING, AMUSING AND ENTERTAINING

And the most intensely interesting entertainment
ever witnessed.

THE ROYAL HIGHLAND CADETS

OF MONTREAL

Will visit this Exhibition, and will give exhibitions of the
Regimental Physical Drill, Bar Bell Exercises,
Fancy Marching, etc.

Grand Military Band Concerts Daily

By the 13th Batt. Band, of Hamilton, the Chatham
Citizens' Band, Waterloo Musical Society, St. Thomas
Y.M.C. A. Band, Deseronto Citizens' Band, 48th
Highlanders, Queen's Own Rifles, Royal Gren-
adiers, C Co. Royal Infantry Band, etc., etc.

TROTTING ^{AND} RUNNING RACES

FOR VALUABLE PURSES

HURDLE JUMPING. FOUR-IN-HAND
^{and} TANDEM COMPETITIONS, ETC.

Bicycle Races and many other Athletic Sports

BRILLIANT ILLUMINATION

OF THE GROUNDS AND BUILDINGS

EACH EVENING

Including the "Famous Crystal Walk," with many new devices

EXHIBIT OF FISH FROM THE GREAT LAKES

GREAT NATURAL HISTORY EXHIBIT

Magnificent Paintings in the Art Gallery by
Canadian Artists, etc., etc.

CL

In h

P
Build
7 a.m
that

O
will
Kirk
of O
open
cerem
turee
Trott
and 2

TR

Perfo
feats

Milit
the b
Man

CLIFFORD M. CALVERLEY

THE HERO OF NIAGARA FALLS

In his wonderful performances on the High Wire.

Daily Programme



MONDAY, SEPT. 4th

PREPARATION DAY—The Grounds and Buildings will be open to exhibitors only, from 7 a.m. till 6 p.m. All exhibits must be in place by that hour.

TUESDAY, SEPT. 5th

OPENING DAY—The Grounds and Buildings will be open to the public at 9 a.m. The Hon. G. A. Kirkpatrick, Lieutenant-Governor of the Province of Ontario, with Mrs. Kirkpatrick, will officially open the Exhibition at 2 o'clock p.m. The opening ceremonies will be followed by all the special features arranged for the full term of the exhibition. Trotting Races in the Horse Ring for the 3-minute and 2.45 classes. Exhibitions by

PROFS. COUP'S and BUCKLEY'S

TRAINED HORSES AND DOGS

Performances on track in front of Grand Stand, and feats of horsemanship by troupes of

BEDOUIN ARABS

Military Tournaments and Grand Entertainment by the best of Specialty performers. All exhibits of Manufactures and Horticultural Department, etc.,

open until 6 p.m. Imperial Hungarian Gypsy Orchestra, C Company, School of Infantry, and Exhibition Band.

WEDNESDAY, SEPT. 6th

WHEELMEN'S DAY—All the Industrial Departments will be open from 8 a.m. till 6 p.m. Art Gallery, Horticultural Show, Exhibition Museum, etc., etc. All Machinery and Implements in full operation.

FOUR BICYCLE RACES

for valuable prizes. Trotting Race for 2.30 and Pacing Race for 2.35 class.

Prof. Buckley's Educated Horses

Prof. Freyer's Wonderful Dogs

Arabian and Military Exhibitions. Specialty Performances and all other special features. Music during the day by the

Imperial Hungarian Gypsy Orchestra

C Company, Royal School of Infantry, and Exhibition Bands.

THURSDAY, SEPT. 7th

BREEDERS' DAY—Competitions for special prizes for Thoroughbred, Roadster, Carriage, Clydesdale, Shire and Standard Bred Horses, etc. The Grounds and Buildings will be open from 8 a.m. till 10 p.m. All the Industrial Departments will be open and all Machinery in operation.

Great Electrical Exhibit

Judging of Dog, Cart and Cob Horses. Trotting Races for all classes, Free for All Paces, and two year old colts. Contests in the Horse Ring for Light Weight Green Hunters,

Exh

Ent

PR

Speci
and n
Groun
Hung
pany

EV
till 10
Grand
Specta

B

In wh
Batter

A M

All un
vision

Me

Music

SC
tures
young
open fr

Trottin
Horses

Exhibitions by the Arabians and Military and Wild West Horsemen

Entertainment by Profs. Coup and Buckley's Wonderful Horses, and

PROF. FREYER'S EDUCATED DOGS

Specialty Performances in front of the Grand Stand and many novel features on various parts of the Grounds. Musical Entertainments by the Imperial Hungarian Orchestra, the Exhibition and C Company Bands.

EVENING, 7.30—All buildings will be open till 10 p.m. All Special Features in front of the Grand Stand, concluding with the Great Military Spectacle and Realistic War Scene, the

BATTLE OF TEL-EL-KEBIR

In which over 300 Military will be engaged, with Batteries of Artillery, Troops of Cavalry, etc., and

A Magnificent Display of Fireworks

All under the management and personal supervision of

Messrs. James Pain & Sons, of London,
England.

Music during the evening by the various bands.

FRIDAY, SEPT. 8th

SCHOOL CHILDREN'S DAY—Special Features will be provided for the entertainment of young and old. All departments of the first week open from 8 a.m. till 10 p.m.

BOYS' BICYCLE RACES

Trotting Races for Farmers' and Gentlemen's Road Horses, and three year old colts, Hurdle Jumping

Contests for Heavy Weight Green Hunters, Judging of Ponies, all the Specialty Performances in front of the Grand Stand.

Prof. Buckley's Educated Horses

Prof. Freyer's Wonderful Dogs

Feats of Horsemanship, Combats and Characteristics of the natives of the Orient by the

GREAT TROUPE OF ARABS

**Wild Riding by Cowboys and Indians,
Military Displays**

And other features. Music by the several bands and Hungarian Gypsy Orchestra.

EVENING, 7.30—Illumination of the Grounds and Buildings. the

GREAT MILITARY SPECTACLE

The Battle of Tel-El-Kebir

and Magnificent Fireworks Displays by Messrs. James Pain & Sons, and full Entertainment by the

EXHIBITION SPECIALTY COMPANY

Concerts by the Hungarian Orchestra and other bands.

SATURDAY, SEPT. 9th

LADIES' DAY—Grounds and Buildings open from 8 a.m. till 10 p.m. All the Industrial Departments, Fine Art Exhibit and Horticultural Departments open, and

**All Machinery and Implements in
Operation**

Exhibit of Cooking, Heating and Ironing by electricity by the Electrical Companies, of special importance to the ladies.

RUNNING RACES

Open Race and Race for Farmers' Horses, pony running races, competition for Tandems, competition for Boy Riders, Donkey Races, Hurdle Jumping Contests for Light Weight Green Hunters, Entertainments in front of the Grand Stand by the

Exhibition Specialty Company

Feats of Horsemanship by the Military, and Performances by the great Troupe of Bedouin Arabs and Wild West Riders

Prof. Coup's Equestriculum

Prof. Buckley's Trained Horses

Prof. Freyer's Educated Dogs

The Hungarian Gypsy Orchestra, C Company Infantry and Exhibition Bands, Exhibition Museum and all other Special Features.

EVENING, 7.30—Illumination of the Grounds, the great Military Spectacle "Tel-El-Kebir,"

Grand Fireworks Display

And all Special Features in front of the Grand Stand. Concerts by the various bands.

MONDAY, SEPT. 11th

CITIZENS' DAY—A great programme of special features. All departments open from 8 a.m. till 10 p.m. All Machinery and Implements in motion, Process of Manufacture, Great Electrical Exhibit, and all other features of the Exhibition on view. Opening of the

Great International Bench Show of Dogs

with over 600 of the best canines of the continent on view. Opening of the Great Live Stock Show, with nearly 1,000 horses, 600 head of cattle in the new stables and cattle sheds erected this year, the finest on the continent, 500 sheep and pigs, great Poultry Show, etc., etc. Special sports in the Horse Ring, Running Races, Open Race, mile heats; Breeders' Stake, $1\frac{1}{4}$ miles, and Open Hurdle Race. Contests for best performances by Professional Coachmen, competition for best appointed gentlemen's turn-outs, competition by gentlemen riders, and for children's turn-outs. Hurdle jumping contests for Heavy Weight qualified Hunters, etc., etc.

Visit and exhibition drill by the

Royal Highland Cadets of Montreal

Entertainment by the Exhibition Specialty Company in front of the Grand Stand.

Prof. Coup's Equescuriculum, Prof. Buckley's Educated Horses, and Prof. Freyer's Trained Dogs.

Exhibition by the Troupe of

BEDOUIN ARABS

and feats of horsemanship

BY WILD WEST RIDERS

Great Military Tournament, and all other special features. Music during the day by the Imperial Gypsy Orchestra, the bands of C Co. School of Infantry, the 13th Batt., Hamilton, Chatham Citizens' and the Exhibition Band.

B
Gro
fect
All t
the
M
with
Mag
Sons

G
the C
Ever
on vi
Dairy
All t

the ex
Muse
and p
tinue
Breed
Heavy
Heref
Fat a
In
Stand
Runn
Hand
Race
Jump
by the
tion D

Highl
Edu
in the
Militan

EVENING, 7.30—Brilliant Illumination of the Grounds and Buildings, converting them into a perfect fairy-land, Magnificent Electrical Displays, etc. All the special features in front of the Grand Stand, the great

Military Spectacle, the Battle of Tel-el-Kebir, with over 300 troops, artillery and cavalry and Magnificent Firework Display of Messrs. Pain & Sons. Concerts during the evening by all the bands.

TUESDAY, SEPT. 12th

GERMANIA DAY—Under the patronage of the German residents of the Province of Ontario. Every department of the Exhibition will now be on view. The great show of Live Stock, Poultry, Dairy, Horticultural and Agricultural Products. All the Industrial Departments,

International Dog Show

the exhibit of Fish, Natural History, the Exhibition Museum, etc., etc. The judging of horses and cattle and poultry will commence at 10 a.m., and be continued throughout the day, the Roadster, Standard Breeds, General Purpose, Clydesdales, Shires, Heavy Draughts and Hackney Horses, Durham, Herefords, Polled Angus, Devons, Galloways and Fat and Grade Cattle and Sheep will be in the rings.

In the Horse Ring and in front of the Grand Stand will be a great entertainment, including Running Races for Hack Horses $1\frac{1}{4}$ miles, Open Handicap Race $\frac{3}{4}$ mile heats, the Hunt Club Hurdle Race $1\frac{1}{2}$ miles, and Pony Running Races, Hurdle Jumping Competition for Hunters, performances by the Great Company of Specialty Artists; Exhibition Drill by the

Highland Cadets of Montreal, Prof. Buckley's Educated Horses, and Prof. Freyer's Trained Dogs, the Great Troupe of Arabs

in their Oriental entertainment, feats of horsemanship by

WILD WEST RIDERS

Military Displays, and many other special features.

Music during the day by the Waterloo Musical Society's Band, the Deseronto Citizens' Band, the Chatham Citizens' Band, C. Co. Royal Infantry Band, the Exhibition Band, and the

Imperial Hungarian Gypsy Orchestra

EVENING, 7.30—Illumination of the Grounds and Buildings, Electrical Displays. All the special features in front of the Grand Stand, the

Great Realistic Battle Scene, Tel-el-Kebir

and Magnificent Firework Displays by Messrs. Pain & Sons, with entire change of programme from previous evenings. Concerts during the evening by the various bands.

WEDNESDAY, SEPT. 13th

FARMERS' DAY—Under the patronage of the Patrons of Industry, the Patrons of Husbandry and the Farmers' Institutes of the Dominion. All the Live Stock will be in the ring during the day, and every department of the Exhibition will be open from 8 a.m. till 10 p.m. Judging of Thoroughbred and Carriage Horses, Hunters and Saddle Horses and continuation of the judging of classes commenced previous day. Judging of Ayrshires, Jerseys, Guernseys and Ho!stein Cattle, etc., etc. Grand exhibit of North-West products by the C.P.R. Co., and special exhibits from the Experimental Farms of the Dominion. Exhibition of Roadsters and Carriage Horses in the large ring, entertainments in front of the Grand Stand, the

Trained Horses and Dogs, Military Tournaments, Exhibitions of Horsemanship, the

Great Troupe of Arabs

and all other special features.

EVENING, 7.30—Illumination of the Grounds and Buildings. Entertainment in front of the Grand Stand, the

Great Battle Scene, Tel-el-Kebir

and Magnificent Firework Displays. Music during the day and evening by the

The 4
Band
C Co

A
partm
8 a. m
at its
Stock
Hunt
Road
the G
tural

T
and a
have
Ring
peate
Great
Co

entert

Feats
etc.,
winne
ing fe
the Q
Infant
Gypsy

EV
Groun
Prism

T
by Me

Imperial Hungarian Orchestra

The 48th Highlanders Band, the Royal Grenadiers Band, the Railway Y.M.C.A. Band of St. Thomas, C Co. Royal Infantry and the Exhibition Band.

THURSDAY, SEPT. 14th

AMERICAN VISITORS' DAY—Every department of this Great Exhibition will be open from 8 a.m. till 10 p.m., and everything on view will be at its best. Continuation of the judging of Live Stock not completed the previous day. Judging of Hunters and Saddle Horses; special parades of Roadster, Carriage, Hackney and Saddle Horses, the Great Electrical Exhibit, Dairy and Horticultural Shows,

The International Show of Dogs

and all other special exhibits. All the features that have been presented during the week in the Horse Ring and in front of the Grand Stand will be repeated, and the programme will be extended.

Great Military Tournament, Exhibitions by Prof.

Coup's Equescriculum, Prof. Buckley's

Educated Horses, Prof. Freyer's

Wonderful Dogs,

entertainment by the Exhibition Specialty Company

And the Bedouin Arabs

Feats of horsemanship by the Wild West Riders, etc., etc. Hurdle jumping contests by the prize winners on previous days, and many other interesting features. Music during the day by the Band of the Queen's Own Rifles, C. Co. Royal School of Infantry, Hassey Natzy's Imperial Hungarian Gypsy Orchestra, and the Exhibition Band.

EVENING, 7.30—Grand Illumination of the Grounds and Buildings with beautiful Crystal Prismatical and Electrical Effects,

The Great Battle Scene, Tel-el-Kebir

by Messrs. Pain & Sons, with British and Egyptian

troops, Arabs, Batteries of Artillery and Cavalry, etc., Grand Firework Displays and entertainment by the Exhibition Specialty Company in front of the Grand Stand in full as given on previous evenings.

FRIDAY, SEPT. 15th

REVIEW DAY—The last, but one of the Best Days of the Greatest Annual Fair and Exposition of the year, and those who cannot visit it before should not let this day go by. Everything that has been on view any day during the Fair will be there this day. Every department remains complete up till night, and the Grounds and Buildings are open till 10 o'clock p.m. During the afternoon all the

Prize Horses and Cattle will be Paraded

in the Horse Ring, and form a procession around the track, affording one of the best opportunities to view this grand exhibit.

The Great Dog Show

All the Special Exhibits, Machinery and Implements in full operation, and all other Special Features will be on view the full day. The Special Attractions will all be given as on previous days, and will be at their best. There will also be Running Races, Open Handicap Races, Half Mile heats, and races for Half-breds, $1\frac{1}{2}$ miles.

Music by the Hungarian Gypsy Band

C Co. Royal School of Infantry and the Exhibition Band.

EVENING, 7.30—Illumination of the Grounds and Buildings until 10 p.m. All the Special Features and entertainment in front of the Grand Stand, etc. Concerts by the various bands, and should unfavorable weather have occasioned a postponement on any previous evening of the

Battle of Tel-el-Kebir

and firework display it will be given this evening.

E
will
men
Trea

M
the s
gran

Cavalry,
ment
t of the
enings.

ne Best
tion of
before
at has
e there
e up till
pen till

graded
around
ities to

Imple-
Special
Special
s days,
e Run-
heats,

d
hibition

ounds
pecial
Grand
s, and
a post-

ing.

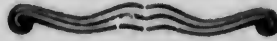
SATURDAY, SEPT. 16th

EXHIBITORS' DAY ONLY—The Grounds will be closed to the public. Exhibitors may commence to remove their exhibits at 7 a.m. The Treasurer will commence paying prizes at 9 a.m.

Many other Special Features will be added to the above between the time of issuing this programme and the opening of the Exhibition.



Conventions and Meetings



A large number of meetings of Stock Breeders and other Associations will be held at Toronto during the progress of the Exhibition, the notice of the time and place of such meetings will be posted on a bulletin board at the Exhibition Offices on the grounds during the Exhibition. Among those of which notice has already been received are the following :

Canadian Manufacturers' Association, in the Board Room, Exhibition Grounds, Friday, Sept. 8th, at 3 p.m.

Ontario Poultry Association, in the Board Room, Exhibition Grounds, on Wednesday, Sept. 13th, at 2 p.m.

Canadian Association of Fairs and Expositions, in the Board Room, Exhibition Grounds, on Monday, Sept. 11th, at 3 p.m.

Ontario Creameries Association will meet on Tuesday, the 12th inst., at 8 p.m., at the Walker House.

Canadian Electrical Association, in the Board Room, Exhibition Grounds, on Tuesday, Wednesday and Thursday, Sept. 12th, 13th and 14th.

Canadian Kennel Club will meet some time during the progress of the Dog Show, second week of the Fair.

The
West
give t

Fix
point
menc

Sec
Queb
two s
point

All
The
also l
great

Exh
time c
from t

The
ticket

Che
panies
above
For
of Loc

The
finest,
in the
on the
and fr
of Can
be obt
in a fe
Grand
or by a
directl

Are Te
Offices
Good
dining
refresh
buildin

Railway Arrangements

The Grand Trunk, Canadian Pacific, Northern & North Western and Michigan Central Railways have agreed to give the following reduced rates for this Exhibition:

First Week.—Single fare for the round trip from all points in Ontario west of Brockville and Ottawa, commencing September 5th.

Second Week.—Single fare for the round trip west of Quebec City and Island Pond, in Quebec and Ontario with two special cheap excursions, on different days, from all points in this district.

All tickets good to return up to the 18th of September.

The Canadian Pacific and Intercolonial Railways will also issue return tickets from the Maritime Provinces at greatly reduced rates.

Exhibitors can obtain return tickets at single fare any time on and after August 27th on presenting a certificate from the Secretary of the Exhibition.

The Steamboat Lines will also sell cheap excursion tickets every day during the Fair.

Cheap excursions will also be run by the Railway Companies in the bordering States in connection with the above.

For full particulars see Companies' posters, or enquire of Local Agent.

How to Reach the Grounds

The grounds, over one hundred acres in extent, are the finest, and the buildings the largest and most commodious in the Dominion of Canada. They are beautifully located on the shore of Lake Ontario, at the west end of the city, and from them a splendid view of Toronto, the Queen City of Canada, with the surrounding country and the lake, can be obtained. They are easy of access, and can be reached in a few minutes by the Electric Street Railway, by the Grand Trunk Railway cars, running every few minutes, or by a line of Steamers on the Bay, which land visitors directly at the grounds.

On the Grounds

Are Telegraph, Express, Telephone, Newspaper and Post Offices; Barber Shops and Parcel Offices, etc.

Good meals can be obtained at all hours at the various dining halls, and there are any number of first-class refreshment counters in various parts of the grounds and buildings.

Exhibition Pointers

If you desire to see the Exhibition in comfort, come the first week. If you want to see it with crowds, come the second. Attractions equally as good both weeks.

If you require hotel accommodation, consult the next page of this book. If you prefer a private boarding house, any number will be found on the following and many other Streets; King St. West, Adelaide St. West, Richmond St. East and West, Church St. north of Queen, George St., Bond St., Simcoe St. south of Queen, Shuter, George, Peter, Mutual and many other Streets, at from \$3 to \$5 per week.

Every one should take two or three days to view the Exhibition, it cannot be fully seen and appreciated in one day.

If you cannot all leave home at once, let part of your family come the first week, and the other part the second.

If you want information whilst in the city, seek it from a policeman or in any store, the proprietors of which will be glad to furnish you with it.

Do not go away without seeing the Fireworks and the Great Battle Scene, "Tel-el-Kebir." It costs thousands of dollars more than an ordinary firework display, and can be seen nowhere else in Canada. The one price of admission covers the whole day, no extra charge being made for the evening entertainments as is done at many other places.

Do not miss this Exhibition as it will be away ahead of all previous ones. New buildings have been added and others enlarged during the present year to meet the increased number of exhibits.

Admission by Ticket only; no money taken at the gates. Have your 25 cents ready and avoid delay in getting change at the ticket office.

All railway tickets issued for the Exhibition are good to return up to the 18th September.

Come and bring your families and have an enjoyable time.

Consult the list of Hotels, Railway arrangements, and other information, on following pages.

Quee
Ross
Wall
Palm
Albic
Keac
Rich
Black
St. Ja
Hotel
Arlin
Elliot
Kens
Russe
Comm
Intern
Power
Robin
Clyde
Grosv
O'Con
Black
Carlet
City A
Schille
Bay H
Empre
Crysta
Imperi
Armor
York H
Nealon
Union
Gladsto

Lake V
Avonda
Avonm
Y.W.C.

PRINCIPAL HOTELS . . . IN TORONTO

| NAME OF HOTEL. | LOCATION. | Accommodation. | RATES PER DAY. |
|---------------------|--|----------------|------------------|
| Queen's Hotel..... | 78 to 92 Front St. W... | 350 | \$3.00 to \$4.50 |
| Rossin House..... | Cor. King and York .. | 350 | 3.00 to 4.50 |
| Walker House..... | Cor. Front and York .. | 350 | 2.00 to 2.50 |
| Palmer House..... | Cor. King and York .. | 300 | 2.00 |
| Albion Hotel..... | 31 Jarvis St. | 250 | 1.50 |
| Keachie's Hotel... | 30 King St. W. | On | European Pl'n |
| Richardson House | 458 King St. W. | 100 | \$1.50 |
| Black Horse Hotel | Cor. Front and George | 200 | 1.50 |
| St. James Hotel .. | 11 York St. | 150 | 1.50 |
| Hotel Metropole.. | 124 King St. W. | 100 | 1.50 to \$2.00 |
| Arlington | Cor. King and John .. | 150 | 3.00 |
| Elliott House..... | Cor. Church & Shuter | 100 | 2.00 |
| Kensington Hotel. | Cor. King and York .. | 150 | 1.50 to 2.00 |
| Russell House | 217 Yonge St. | 150 | 1.00 to 2.00 |
| Commercial..... | 56 Jarvis St. | 150 | 1.00 |
| International | Cor. Simcoe and Front | 150 | 1.00 to 1.50 |
| Power House | 421 King St. W. | 100 | 1.00 |
| Robinson House.. | 109 Bay St. (Temp'nce) | 80 | 1.25 |
| Clyde Hotel..... | King St. E. | 200 | 1.25 |
| Grosvenor House. | Yonge and Alexander | 100 | 2.00 |
| O'Connor House .. | 94 Front St. E. | 50 | 1.00 |
| Black Bull Hotel . | 298 Queen St. W. | 50 | 1.00 |
| Carleton House.. | 183 Yonge St. | 50 | 1.00 to 2.00 |
| City Arms Hotel.. | 36 West Market St. | 50 | 1.00 |
| Schiller House.... | 120 Adelaide St. E. | 50 | 1.00 |
| Bay Horse Hotel.. | 163 to 167 Yonge St. | 50 | 1.00 |
| Empress | Cor. Yonge and Gould | 150 | 1.00 to 1.50 |
| Crystal Palace.... | Cor. King & Strachan | 75 | 1.50 to 2.00 |
| Imperial Hotel ... | 52 Jarvis St. | 100 | 1.00 |
| Armory Hotel | 12 West Market. | 50 | 1.00 |
| York Hotel | 187 King St. E. | 100 | 1.00 |
| Nealon House | 197 King St. E. | 100 | 1.00 to 1.50 |
| Union House | 21 Simcoe St. | 75 | 1.00 |
| Gladstone House.. | { Cor. Queen St. and } { Gladstone Ave. } | 100 | 2.00 |
| Lake View Hotel. | { Cor. Parliament & } { Winchester Sts. } | 100 | 1.50 |
| Avondale | 57 Simcoe St. | 200 | 2.00 |
| Avonmore | 274 Jarvis St. | 50 | 1.50 |
| Y. W. C. Associat'n | 34 Elm St. (Ladies only) | | |

For the guidance of visitors a list is here given of a few
of the

PLACES OF INTEREST

And Public Buildings in Toronto

The Toronto Exhibition, Crystal Palace and Grounds.
Lieut.-Governor's Residence, cor. King and Simcoe Sts.
Parliament Buildings, Queen's Park.
City Hall, Front St. East.
New City Hall and Court House, at head of Bay St. (now
in course of erection).
New Board of Trade Building, cor. Yonge and Front Sts.
Provincial Lunatic Asylum, Queen St. West.
New Fort and School of Infantry.
Osgoode Hall, Queen St. West.
Queen's Park, head of College Ave.
Monument to the heroes of Ridgeway, Queen's Park.
University Buildings, Queen's Park.
School of Science and Observatory, Queen's Park.
Monument to Hon. George Brown, Queen's Park.
McMaster Hall, Queen's Park.
Horticultural Gardens, cor. Gerrard and Sherbourne Sts.
Normal School, Museum, etc., Gould St.
St. James' Cathedral (Episcopal), King St. East.
St. Michael's Cathedral (R. C.), cor. Bond and Shuter Sts.
Metropolitan Church (Methodist), Queen St. East.
St. Andrew's Church, cor. King and Simcoe Sts.
Baptist Church, cor. Gerrard and Jarvis Sts.
Post Office, Adelaide St. East.
St. Lawrence Hall and Market, King St. East.
Central Prison, Strachan Ave.
Knox College, Spadina Ave.
Trinity College, Queen St. West.
Upper Canada College, head of Avenue Road.
General Hospital, Gerrard St. East.
Public Library, cor. Church and Adelaide Sts.
Grand Opera House, Adelaide St. West.
Academy of Music, King St. West.
Toronto Opera House, Adelaide St. West.
Moore's Museum, Yonge St.
Hanlan's Hotel and the Island.
The City Fire Halls (open to visitors).
Custom House, foot of Yonge St.
Y. M. C. A. Rooms, cor. Yonge and McGill Sts.
View of the City from the Tower of the Canada Life
Building, King St.
Water Works, Reservoir and Park, Yonge St.
Canada Life Building Tower, King St. West.

a few

T

ds.
Sts.

. (now
nt Sts.

x.

e Sts.

er Sts.

a Life



**GRAND MILITARY TOURNAMENT
& FIREWORKS SPECTACLE**

BATTLE OF TEL-EL-KEBIR.



**LATEST NOVELTIES & SPECIALTIES.
DAILY PERFORMANCES IN HORSE RING
TROTTING & RUNNING RACES
& MANY NEW FEATURES.**

