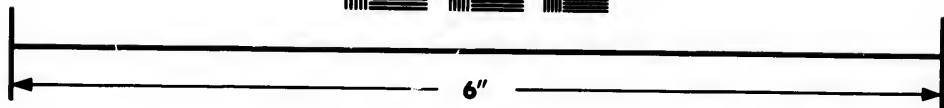
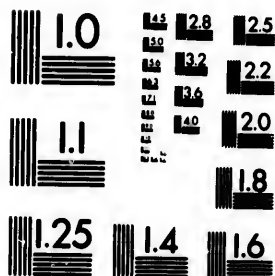


**IMAGE EVALUATION
TEST TARGET (MT-3)**



**Photographic
Sciences
Corporation**

23 WEST MAIN STREET
WEBSTER, N.Y. 14580
(716) 872-4503

1.8
2.0
2.2
2.5
2.8
3.2
3.6
4.0

**CIHM/ICMH
Microfiche
Series.**

**CIHM/ICMH
Collection de
microfiches.**



Canadian Institute for Historical Microreproductions / Institut canadien de microreproductions historiques

01
10

© 1982

Technical and Bibliographic Notes/Notes techniques et bibliographiques

The Institute has attempted to obtain the best original copy available for filming. Features of this copy which may be bibliographically unique, which may alter any of the images in the reproduction, or which may significantly change the usual method of filming, are checked below.

L'Institut a microfilmé le meilleur exemplaire qu'il lui a été possible de se procurer. Les détails de cet exemplaire qui sont peut-être uniques du point de vue bibliographique, qui peuvent modifier une image reproduite, ou qui peuvent exiger une modification dans la méthode normale de filmage sont indiqués ci-dessous.

- Coloured covers/
Couverture de couleur
- Covers damaged/
Couverture endommagée
- Covers restored and/or laminated/
Couverture restaurée et/ou pelliculée
- Cover title missing/
Le titre de couverture manque
- Coloured maps/
Cartes géographiques en couleur
- Coloured ink (i.e. other than blue or black)/
Encre de couleur (i.e. autre que bleue ou noire)
- Coloured plates and/or illustrations/
Planches et/ou illustrations en couleur
- Bound with other material/
Relié avec d'autres documents
- Tight binding may cause shadows or distortion along interior margin/
La reliure serrée peut causer de l'ombre ou de la distorsion le long de la marge intérieure
- Blank leaves added during restoration may appear within the text. Whenever possible, these have been omitted from filming/
Il se peut que certaines pages blanches ajoutées lors d'une restauration apparaissent dans le texte, mais, lorsque cela était possible, ces pages n'ont pas été filmées.
- Additional comments:
Commentaires supplémentaires:

- Coloured pages/
Pages de couleur
- Pages damaged/
Pages endommagées
- Pages restored and/or laminated/
Pages restaurées et/ou pelliculées
- Pages discoloured, stained or foxed/
Pages décolorées, tachetées ou piquées
- Pages detached/
Pages détachées
- Showthrough/
Transparence
- Quality of print varies/
Qualité inégale de l'impression
- Includes supplementary material/
Comprend du matériel supplémentaire
- Only edition available/
Seule édition disponible
- Pages wholly or partially obscured by errata slips, tissues, etc., have been refilmed to ensure the best possible image/
Les pages totalement ou partiellement obscurcies par un feuillet d'errata, une pelure, etc., ont été filmées à nouveau de façon à obtenir la meilleure image possible.

This item is filmed at the reduction ratio checked below/
Ce document est filmé au taux de réduction indiqué ci-dessous.

10X	14X	18X	22X	26X	30X
<input type="checkbox"/>	<input type="checkbox"/>	<input type="checkbox"/>	<input type="checkbox"/>	<input checked="" type="checkbox"/>	<input type="checkbox"/>
12X	16X	20X	24X	28X	32X

The copy filmed here has been reproduced thanks to the generosity of:

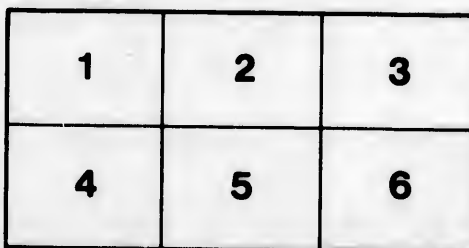
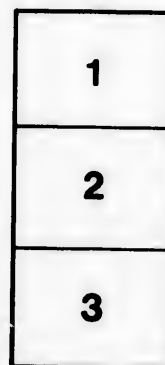
Library Division
Provincial Archives of British Columbia

The images appearing here are the best quality possible considering the condition and legibility of the original copy and in keeping with the filming contract specifications.

Original copies in printed paper covers are filmed beginning with the front cover and ending on the last page with a printed or illustrated impression, or the back cover when appropriate. All other original copies are filmed beginning on the first page with a printed or illustrated impression, and ending on the last page with a printed or illustrated impression.

The last recorded frame on each microfiche shall contain the symbol \rightarrow (meaning "CONTINUED"), or the symbol ∇ (meaning "END"), whichever applies.

Maps, plates, charts, etc., may be filmed at different reduction ratios. Those too large to be entirely included in one exposure are filmed beginning in the upper left hand corner, left to right and top to bottom, as many frames as required. The following diagrams illustrate the method:



L'exemplaire filmé fut reproduit grâce à la générosité de:

Library Division
Provincial Archives of British Columbia

Les images suivantes ont été reproduites avec le plus grand soin, compte tenu de la condition et de la netteté de l'exemplaire filmé, et en conformité avec les conditions du contrat de filmage.

Les exemplaires originaux dont la couverture en papier est imprimée sont filmés en commençant par le premier plat et en terminant soit par la dernière page qui comporte une empreinte d'impression ou d'illustration, soit par le second plat, selon le cas. Tous les autres exemplaires originaux sont filmés en commençant par la première page qui comporte une empreinte d'impression ou d'illustration et en terminant par la dernière page qui comporte une telle empreinte.

Un des symboles suivants apparaîtra sur la dernière image de chaque microfiche, selon le cas: le symbole \rightarrow signifie "A SUIVRE", le symbole ∇ signifie "FIN".

Les cartes, planches, tableaux, etc., peuvent être filmés à des taux de réduction différents. Lorsque le document est trop grand pour être reproduit en un seul cliché, il est filmé à partir de l'angle supérieur gauche, de gauche à droite, et de haut en bas, en prenant le nombre d'images nécessaire. Les diagrammes suivants illustrent la méthode.

tails
du
odifier
une
mage

rata
o
elure,
à

32X

VICTORIA THEATRE PROGRAMME

OFFICIAL PROGRAMME
of the Victoria Theatre.

F. B. WILLIAMS, PUBLISHER.

Advertising space in this Programme can be had by applying at Jamieson's Book Store or to F. B. Williams at the office of the Protract Publishing Co. 15 Broad St.

PRICES.

There will not be any regular or established prices for admissions, but are booked to appear at the Victoria Theatre, and the standard first class, dress circle and orchestra seats will be here, and the prices will be:

Orchestra Seats 1.00
Orchestra Circle 75
Dress Circle 50

Prices will only be advanced when absolutely necessary. Large and high seated compartments cannot be expected to play at usual prices.

Read THE PROGRAMME, and take it home with you and send it to your friends in the East.

RULES AND REGULATIONS.

The evening performance will commence at 8 o'clock, and the matinee at 2 o'clock.

The doors will be open at 7:30 p.m. and for matinees at 1:30 p.m.

Children in arms not admitted.

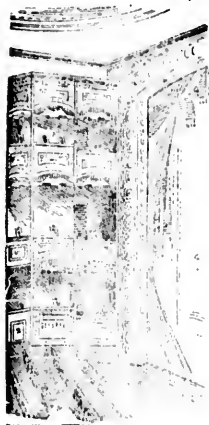
Seats can be ordered by telephone Jamieson's theatre telephone—number 63.

Ushers are prohibited from receiving fees.

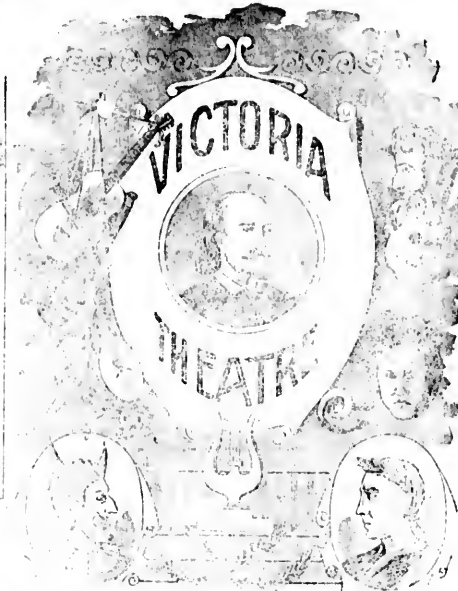
Please report to the management any incivility on the part of the employees.

Carriages may be ordered for the evening performance at 10:30 p.m., and for the matinee at 4:20.

Nov. 1st.



Lessee and Manager
ROBERT JAMIESON,



Thomas F. Oakes, Henry C. Payne
Henry C. Rouse.
ELIZABETH

NORTHERN PACIFIC

RAILROAD

RUNS

Fullman Sleeping Cars
Elegant Dining Cars
Tourist Sleeping Cars

TO
St. Paul
Minneapolis
Duluth
Fargo
Grand Forks
Crookston
Winnipeg
Helena and
Butte

THROUGH TICKETS

-- To --

Chicago
Philadelphia
Washington
New York
Boston
And all Points East and
South.

TIME SCHEDULE

For Information, Time Cards, Maps and Tickets, Call on or write to—

E. E. BLACKWOOD,
Agent, Government Street,
VICTORIA, B.C.

A. D. CHARLTON,
Asst. General Passenger Agent,
PORTLAND, Or.

Monday, November 2.

MISS ROSE COGHLAN * L. R. STOCKWELL

COMPANY OF PLAYERS

PRESENTING

THE MAGISTRATE

A Comedy in Four Acts by A. W. Pinero.

Next attraction--Lillian Lewis' Spectacular Cleopatra

MUSICAL PROGRAMME

1. March..... "Elks' Parade"..... Barnard
2. Overture..... "Schauspiel"..... Bach
3. Waltz..... "España"..... Waldteufel
4. Hymn..... "The Mill in the Forest"..... Eilenberg



Is the Leading FOTOGRAFER

Joseph Sears

HOUSE AND SIGN PAINTER

Paper-Hanging
Decorating
Glazing, Etc.

Removed to Corner of
Blanchard and Johnson Sts

GOOD WORK

—AND—

HARD TO BEAT REPAIRING

While you wait.

Best Stock. Lowest Prices.

GEO. A. SHADE,
99 Douglas St.

The Japanese
ORIENTAL BAZAAR
New Goods cheaper
than ever. Novel-
ties in Japanese Silks.
A. WANIBE,
90 DOUGLAS ST.

Ladies



—OUR—

Fancy Dress Slippers

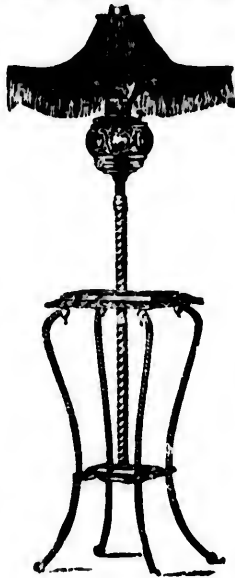
Have just arrived. A Magnificent Line

J. H. BAKER

63 Government St.

WEDDING PRESENTS.

Quadruple Silver Plate.



Wrought Iron Table, Banquet and Train
Lamps, Fenders, Fire Sets, Andirons,
Rich Gold Finish Onyx Top Tables

AND MANY HANDSOME NOVELTIES.

Why buy old style goods at so-called low prices, when
you can get the newest goods made for
a trifle more.

Come and see our goods, even if you do not purchase.

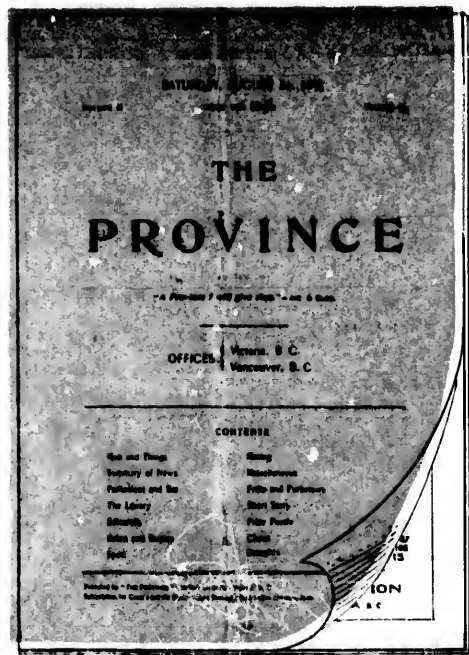


WEILER BROS.,

Showrooms 55 to 57, Fort Street

Use LeVatte & Ward's Worcester Sauce

FOUR DIPLOMAS AND FIRST PRIZE AT THE EXHIBITION



You Must

USE WHITING'S STATIONERY

If you wish to be correct in your correspondence. Their papers have been in use for thirty years and the verdict of popular approbation is with them.



WHITING'S STANDARD LINEN

Takes the Lead. There is none "just as good." Insist upon getting this paper and you will have the best.



ROBERT JAMIESON,

Books and Stationery.

61 Government Street.

The Sale Still Continues At The Sehl-Hastie-Erskine Co

ANOTHER CUT IN PRICES.

T

That is gone up
Sugar w
right wit
and plum

Go to

We

In the
goods
Gentle
made
trimm
guaran

T.W.W

PRACT

22 T

If you v
LATE

W
Monday

COR. YAF

Masquer
Ro
ROOM

The

S.

THE FESTIVE HOUSE FLY never troubles himself about the hereafter, but gives his individual attention to the living present. Rain or shine, winter or summer, he is a stayer. If you smite him on one cheek, he don't take the trouble to skip over to the other one, but is back in the same place in an instant. That is us. We are lighting in the same place every time—that is spot cash. Prices are advancing. Butter gone up again, and still going—so say the wise ones. We have some left at old price, and are selling at 25 cents. Sugar worse than a barometer; up goes the price a ¼ cent, and down goes quantity to 20 lbs. for a dollar. We are right with it. New Valencia and loose Muscatelle Raisins, Citron, Lemon Peel, when you are ready for mince meat and plum pudding.

DIXI H. ROSS & CO.

117 GOVERNMENT STREET.

Go to A O.U.W. Hall **SATURDAY**, The Great Drama "LYNWOOD"
16th instant.

Will be supported by a Strong Company. Popular Prices—50c and 75c. Reserve your seats at once.

We XL

In the fine finish of the goods turned out by us Gentlemen's own materials made up with first-class trimmings, and good fit guaranteed.

T.W. Walker & Co.

PRACTICAL TAILORS.

22 Trounce Avenue,
Victoria.

DRIARD BAR, First-Class in Every Respect.

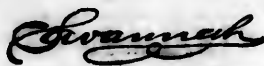
Theatre Curtain Bell at Rise of Curtain.

CAST OF CHARACTERS.

Mr. Posket, magistrate of Mulberry St. Police Court.....	Mr. L. B. Stockwell
Mr. Bullamy, his associate magistrate.....	Mr. Brigham Royce
Col. Lukyn, from Bengal, retired.....	Mr. Edmund Hayes
Capt. Horace Vale, Shropshire Fusiliers.....	Mr. Chas. Bates
Cis Farrington, Mrs. Posket's son by her former husband.....	Mr. Geo. W. Ryan
Achille Blond, Proprietor of the Hotel Des Princes.....	Mr. William Marade
Leadore, a waiter.....	Mr. George Banks
Mr. Wormington, Chief Clerk at Mulberry Street.....	Mr. Harold Vissard
Inspector Messiter.....	Mr. Watson Edson
Sergeant Lugg.....	Mr. Guy Clifford
Constable Harris.....	Mr. Harry Thornton
Wyke.....	Mr. Thos. A. Smith
Charlotte, Agatha's sister.....	Miss Margaret Crayth
Beattie Tomlinson, a young lady reduced to teaching music.....	Miss Emily Lytton
Popham, help at Posket's.....	Miss Ada Lovick

—AND—

Agatha Posket (late Farrington)..... Miss Edna Coghlan



Has Five Medals Awarded for Superior Photos.

SAUSAGE

Try our Superior

PORK SAUSAGE,
PORK PIES,
SAUSAGE ROLLS,
POTTED HEADS,
and PRESSED MEATS,
(all our own make.)

Pickled and Fresh
Pork,

Hams, Bacon and Lard

BEATY & CO.,
45 Government St.,
(Next to C. E. Redfern's.)

If you wish to learn the
LATEST SOCIETY DANCES

and learn quickly

—GO TO—

WINN'S HALL

Monday and Thursday Eve.,
8:15 o'clock.

Cor. YATES & GOVERNMENT ST.

Masquerade Suits to Rent at
Rock Bottom Prices.

ROOM 2, TURNER BLK,
JOHNSON STREET.

Do you want a



We have all the latest styles, both
American and English, to
choose from.

W. N. CARMICHAEL & CO.

65 Yates St.

Opposite Fire Hall.

MR. & MRS. KOSCHER

Importers of Fine French Hair Goods



—LADIES'
HAIR
DRESSERS

Practical
WIG
MAKING

Wigs for Hire

31 GOVERNMENT STREET,

Victoria, B.C.

GO TO THE

CITY CANDY FACTORY

For the
Finest Candies
and the
Choicest Fruit
in the city.

A Refreshing Drink of Arctic
Soda, only 5 cents a glass.

H. A. LILLEY

105 Douglas Street,

Victoria, B.C.

The Sale still continues at the Sehl-Hastie-Erskine Co.
ANOTHER CUT IN PRICES.

P. O. Box 289.

TELE. 121

M. R. SMITH & CO.

(Established 1858.)

Biscuit Manufacturers

57-59 FORT STREET,

VICTORIA, B.C.

Write for price list.

WM. T. HARDAKER

General Auctioneer

77, 79, 81 DOUGLAS ST.

The Largest and Best Appointed
Auction Rooms in the City.

Those wishing to secure household furniture, etc., at a bargain, will do well to pay me a visit.

Goods of all descriptions sold on commission or bought outright, if you so desire.
All business strictly confidential.

Central Drug Store

COR. OF YATES AND DOUGLAS STS.

Hall & Co., Proprietors.



It's a Life-Saver

and the druggist will be pleased. Such methods of saving life, though, however useful, are of small value compared with the vast benefit rendered in suffering humanity by medicine. The druggist is the great life-saver. The doctor prescribes, but the druggist prepares the remedy. You can rely upon the remedy being accurate, as supplied by your proprietor at the Central Drug Store. Our skill and care for guarantee against mistakes, and, as we carry only pure drugs, our medicines are always the best. We also carry a full line of all the standard remedies and preparations, toilet and manure articles, etc.

JNO. M. FINN

1 Springfield Ave. - - Victoria, B.C.

MUSIC FURNISHED FOR ALL OCCASIONS.

Music Rewritten, Transposed, Arranged and Composed for the Voice, Piano or any Instrument. Orders can be left at Jamieson's Bookstore.

JOHN J. BLAND

Manufacturer and
Dealer in

BOOTS and SHOES

REPAIRING AT SHORT NOTICE

59 Douglas St.

The Bank Exchange

The Coziest, Cleanest and Cheapest Restaurant in Town. Menus at all hours. Private Dining Rooms upstairs.

SYNOPSIS.

ACT I—The Family skeleton. At Mr. Pickett's, Bloombury.

ACT II—It leaves its employment. Room in the Hotel des Princes, Meek Street.

ACT III—It crumbles. The Magistrate's room, Mullberry Street.

ACT IV—It is buried. At Mr. Pickett's again.

BOOKINGS.

Lillian Lewis, the popular actress, is being received by large houses in all cities where she is staging the spectacular production of Shakespeare's "Cleopatra." Miss Lewis in her interpretation of the character of the Egyptian queen, has deviated considerably from the somewhat stereotyped product usually seen of this play of the Bard of Avon. Miss Lewis' interpretation is divested of much exotic barrenness, parts are eliminated, and a liberal introduction of dazzling and brilliant tableaux, unusual choruses, and beautiful ballets, is said to lend an additional charm to the composition of the immortal English dramatist. Miss Lewis is ably supported; the scenery is in keeping with the piece, and the costumes are gorgeous in the extreme. The "Spectacular Cleopatra" will be put on the boards at Victoria Theatre 21st and 22nd insts.

THEY HAVE COME

SUPERIOR LINE OF

Mens' Ladies' and Children's Shoes.

GOOD SHOES AT A LOW
FIGURE

JOHN J. BLAND

90 Douglas Street.

Victoria Transfer Company,

21 and 23 BROUGHTON STREET.

CARRIAGES, LIVERY, BAGGAGE WAGONS.

Telephone 129.

ST. ALICE

Mineral Water

FROM

HARRISON HOT SPRINGS

THORPE & CO.

Limited Liability.

VICTORIA VANCOUVER

Telephone 435.
Box 175.

Telephone 181.
Box 265.

COAL

In ordering fuel do not overlook our stock being the most complete in the city.

NEW WELLINGTON—Sack or Lump Coal, double screened \$ 6 00
Do, Nut, very popular for ranges 5 00

PENNSYLVANIA ANTHRACITE—The genuine article direct from the mines, specially adapted for furnaces, self-feeders or base burners. Quotation on inquiry.

CUMBERLAND BLACKSMITH COAL—Special attention given to outside shipments.

Large Stock of Dry Wood on hand at Popular Prices.

Spratt & Macaulay,

Terms CASH.

Telephone 407.

SOLE AGENTS.

FIFTH ANNUAL

JUBILEE HOSPITAL BALL

In the Assembly Rooms, Fort St.
THURSDAY, NOV. 7th.
Under the distinguished patronage of Lord Esso-Berkeley, the Governor-General and Comdant of Aberdeen.

Tickets, including gentlemen and lady, \$1; Lady's ticket \$1; can be had from any of the Auxiliary Committee or at T. S. Hibbins, Jamieson's, Davidson Bros., and Chalmers & Mitchell's.

The Tyrolean Queen A Juvenile Operetta.

Under the direction of Mrs. Bridges and Mrs. Wilkes, will be performed in
A. O. U. W. HALL,

November 6th and 7th,
Under the distinguished patronage of the Countess of Aberdeen and her children.

For the Benefit of St. Joseph's Hospital.
Admission, 50c.; Children, 25c.

A special feature will be a Canals Drill between the second and third acts, given by young ladies in Nautical Costume.

