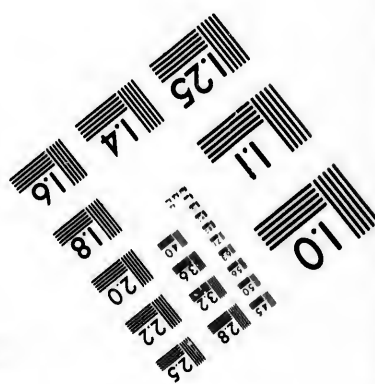
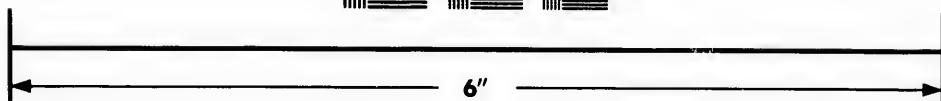
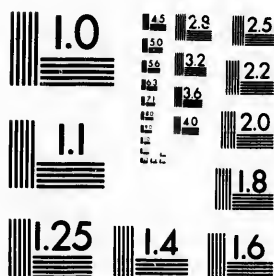


IMAGE EVALUATION TEST TARGET (MT-3)



Photographic
Sciences
Corporation

23 WEST MAIN STREET
WEBSTER, N.Y. 14580
(716) 872-4503

**CIHM/ICMH
Microfiche
Series.**

**CIHM/ICMH
Collection de
microfiches.**



Canadian Institute for Historical Microreproductions / Institut canadien de microreproductions historiques

© 1987

Technical and Bibliographic Notes/Notes techniques et bibliographiques

The Institute has attempted to obtain the best original copy available for filming. Features of this copy which may be bibliographically unique, which may alter any of the images in the reproduction, or which may significantly change the usual method of filming, are checked below.

- ☐ Coloured covers/
Couverture de couleur
- ☐ Covers damaged/
Couverture endommagée
- ☐ Covers restored and/or laminated/
Couverture restaurée et/ou pelliculée
- ☐ Cover title missing/
Le titre de couverture manque
- ☐ Coloured maps/
Cartes géographiques en couleur
- ☐ Coloured ink (i.e. other than blue or black)/
Encre de couleur (i.e. autre que bleue ou noire)
- ☐ Coloured plates and/or illustrations/
Planches et/ou illustrations en couleur
- ☐ Bound with other material/
Relié avec d'autres documents
- ☐ Tight binding may cause shadows or distortion
along interior margin/
La reliure serrée peut causer de l'ombre ou de la
distorsion le long de la marge intérieure
- ☐ Blank leaves added during restoration may
appear within the text. Whenever possible, these
have been omitted from filming/
Il se peut que certaines pages blanches ajoutées
lors d'une restauration apparaissent dans le texte,
mais, lorsque cela était possible, ces pages n'ont
pas été filmées.
- ☐ Additional comments:/
Commentaires supplémentaires:

L'Institut a microfilmé le meilleur exemplaire qu'il lui a été possible de se procurer. Les détails de cet exemplaire qui sont peut-être uniques du point de vue bibliographique, qui peuvent modifier une image reproduite, ou qui peuvent exiger une modification dans la méthode normale de filmage sont indiqués ci-dessous.

- ☐ Coloured pages/
Pages de couleur
- ☐ Pages damaged/
Pages endommagées
- ☐ Pages restored and/or laminated/
Pages restaurées et/ou pelliculées
- ☒ Pages discoloured, stained or foxed/
Pages décolorées, tachetées ou piquées
- ☒ Pages detached/
Pages détachées
- ☒ Showthrough/
Transparence
- ☐ Quality of print varies/
Qualité inégale de l'impression
- ☐ Includes supplementary material/
Comprend du matériel supplémentaire
- ☐ Only edition available/
Seule édition disponible
- ☐ Pages wholly or partially obscured by errata
slips, tissues, etc., have been refilmed to
ensure the best possible image/
Les pages totalement ou partiellement
obscurcies par un feuillet d'errata, une pelure,
etc., ont été filmées à nouveau de façon à
obtenir la meilleure image possible.

This item is filmed at the reduction ratio checked below/
Ce document est filmé au taux de réduction indiqué ci-dessous.

10X	12X	14X	16X	18X	20X	22X	24X	26X	28X	30X	32X
							✓				

re
détails
es du
modifier
er une
filmage

The copy filmed here has been reproduced thanks to the generosity of:

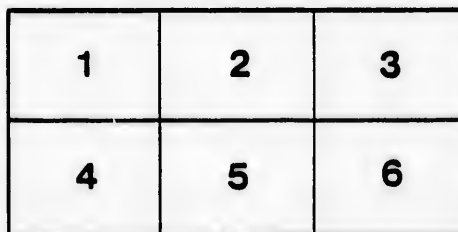
McLennan Library
McGill University
Montreal

The images appearing here are the best quality possible considering the condition and legibility of the original copy and in keeping with the filming contract specifications.

Original copies in printed paper covers are filmed beginning with the front cover and ending on the last page with a printed or illustrated impression, or the back cover when appropriate. All other original copies are filmed beginning on the first page with a printed or illustrated impression, and ending on the last page with a printed or illustrated impression.

The last recorded frame on each microfiche shall contain the symbol \longrightarrow (meaning "CONTINUED"), or the symbol ∇ (meaning "END"), whichever applies.

Maps, plates, charts, etc., may be filmed at different reduction ratios. Those too large to be entirely included in one exposure are filmed beginning in the upper left hand corner, left to right and top to bottom, as many frames as required. The following diagrams illustrate the method:



L'exemplaire filmé fut reproduit grâce à la générosité de:

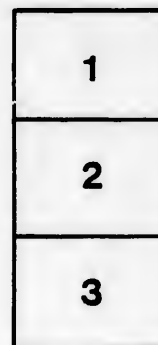
McLennan Library
McGill University
Montreal

Les images suivantes ont été reproduites avec le plus grand soin, compte tenu de la condition et de la netteté de l'exemplaire filmé, et en conformité avec les conditions du contrat de filmage.

Les exemplaires originaux dont la couverture en papier est imprimée sont filmés en commençant par le premier plat et en terminant soit par la dernière page qui comporte une empreinte d'impression ou d'illustration, soit par le second plat, selon le cas. Tous les autres exemplaires originaux sont filmés en commençant par la première page qui comporte une empreinte d'impression ou d'illustration et en terminant par la dernière page qui comporte une telle empreinte.

Un des symboles suivants apparaîtra sur la dernière image de chaque microfiche, selon le cas: le symbole \longrightarrow signifie "A SUIVRE", le symbole ∇ signifie "FIN".

Les cartes, planches, tableaux, etc., peuvent être filmés à des taux de réduction différents. Lorsque le document est trop grand pour être reproduit en un seul cliché, il est filmé à partir de l'angle supérieur gauche, de gauche à droite, et de haut en bas, en prenant le nombre d'images nécessaire. Les diagrammes suivants illustrent la méthode.



y errata
d to
nt
ne pelure,
çon à

229

Uj. B. Kilm, 1884

TABLE OF FEES

TO BE TAKEN BY THE

JUDGE, REGISTRAR, MARSHAL, ADVOCATES,

AND

PROCTORS,

OF THE

VICE-ADMIRALTY COURT

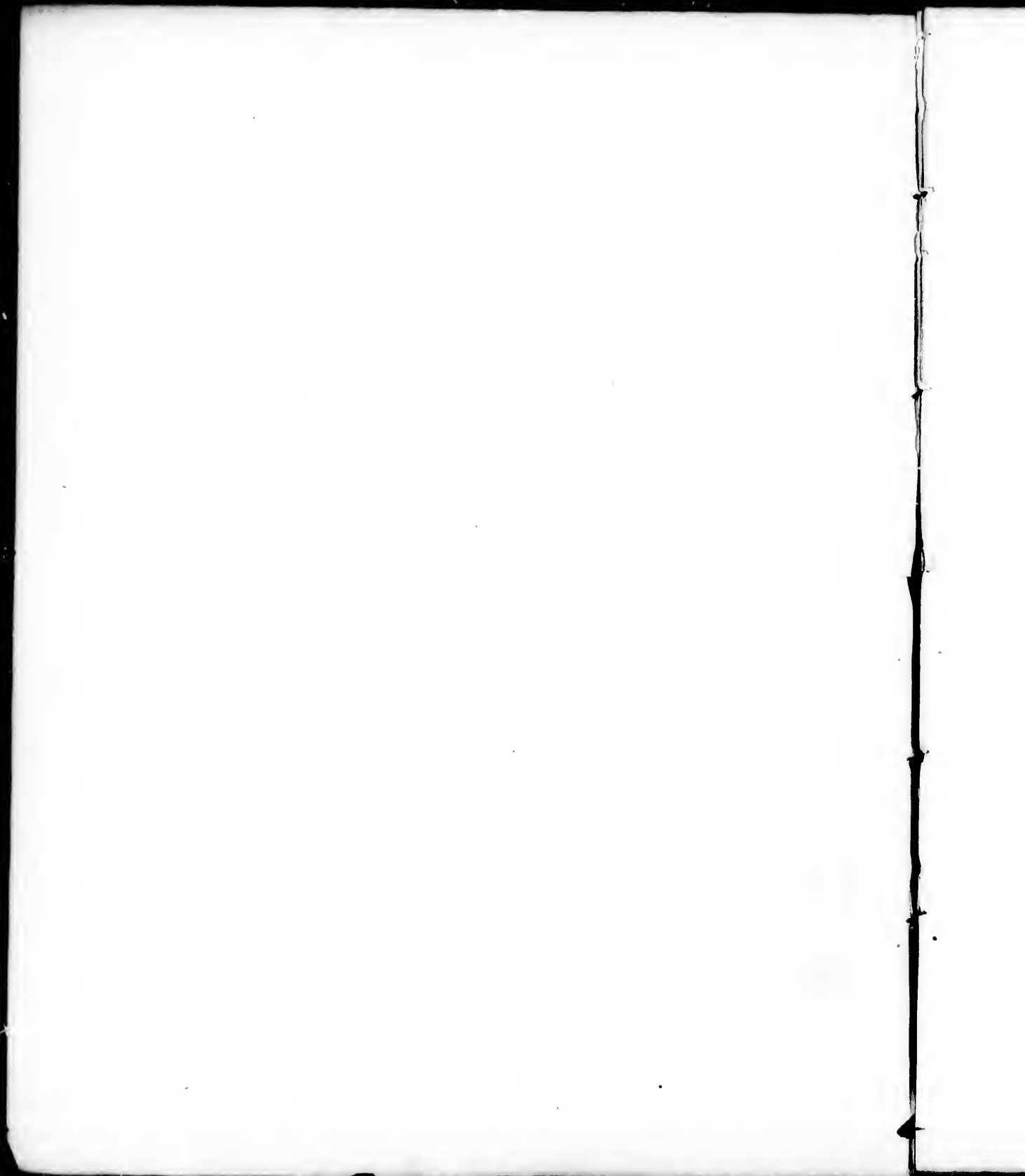
AT

Q U E B E C.

LONDON:

PRINTED BY WILLIAM CLOWES, 14, CHARING-CROSS.

1932.



QUEBEC.

TABLE OF FEES.

BY THE JUDGE.

Fees in the Progress of a Suit or Cause.

	Sterling Money. £. s. d.		
For administering an Oath to a Witness or Party in a Cause. Taking Bail, whether by one or more Persons. Decreeing Monition, Commission, Attachment, or any other Instrument; or for any Judicial Act done before or after the Hearing of a Cause, and not otherwise mentioned herein - - - - -	0	2	0
The above Fee of 2s. to be taken by the Surrogate, whenever he performs the duty.			
On Subduction of an Action - - - - -	0	3	6
On pronouncing a Party to be in Default - - - - -	0	8	6
On signing a Decree pronouncing for the interest of a Party proceeding in penam - - - - -	0	8	6
On a Sentence or Interlocutory Decree - - - - -	1	6	8

Fees upon the Sealing of Instruments.

Warrant of Arrest, Monition, Commission, Decree, Restitution, or Attachment	0	6	6
Compulsory or Subpcna, or any Instrument not otherwise mentioned - - -	0	4	0
Exemplification of any Document or Proceeding - - - - -	0	10	0
Process transmitted to the Court of Appeal - - - - -	0	6	6

BY THE REGISTRAR.

1. Fees on Instruments prepared by the Registrar.

For Drawing and Engrossing—			
Warrant to arrest Ship, Goods, or Person - - - - -	0	5	0
Bail Bond - - - - -	0	5	0
Monition, Commission, or Decree, whether of Unlivery, Appraisement or Sale, or otherwise - - - - -	0	13	4

TABLE OF FEES.

[QUEBEC.]

Sterling Money.

£. s. d.

Writ or Instrument of Restitution - - - - -	0	13	4
Compulsory or Subpœna against Witnesses - - - - -	0	5	0
Writ of Attachment - - - - -	0	13	4
If either of the preceding Instruments exceed in length ten folios, for every folio beyond ten - - - - -	0	1	4

NOTE.—The folio mentioned throughout this Table of Fees must contain ninety words, reckoning each figure as a word.

Should the Registrar be required to prepare any other Document, Instrument, or matter whatsoever, not specified in this Table, he will be entitled to the same charge as a Proctor, viz.

For Drawing, for every folio - - - - -	0	1	4
For fair Copying or Engrossing, for every folio - - - - -	0	0	8

2. *Fees on Documents not prepared by the Registrar, but by the Proctor, Solicitor, or Advocate in a Cause.*

On a Decree, pronouncing for the interest of a Party proceeding in poenam, being signed by the Judge - - - - -	0	8	6
On filing Affidavit or Protest of a Master or Mariners, without reference to the number of persons making the same - - - - -	0	3	6
On filing Libel, Information, Claim, Proxy, or similar Document - - - - -	0	5	4
On filing Exhibit annexed thereto, or to any Affidavit - - - - -	0	1	4
On entering (or engrossing) personal Answers of a Party in a Suit, for each folio - - - - -	0	0	8

3. *Fees on taking the Examination of Witnesses.*

On taking the Examination of every Witness on an Information, Libel, Interrogatories, or Plea, a fee of - - - - -	0	8	6
For each folio to which the Examination shall extend, if in English - - - - -	0	1	4
If by Interpretation (Interpreter included) - - - - -	0	2	8

NOTE.—It should be understood, that the Registrar, or whoever acts as the Examiner for him, should take the Depositions in chief of the Witnesses, on the Libel, Information, or Plea itself, without written Interrogatories; putting such relevant questions, *viva voce*, as may suggest themselves; and care should be taken not to lead the Witness. The Libel, Information, or Plea, should therefore always be drawn sufficiently precise and full, to enable the Examiner to take the Examinations accordingly.

The Cross-examinations must, of course, be taken on written interrogatories.

4. *Fees on Office Copies of Papers or Proceedings.*

For Office Copy of Sentence or Interlocutory Decree, certified under Seal - - - - -	0	12	0
For Office Copy of any Affidavit, Examination, Answers of a Party, or other Documents or Proceedings in a Cause, or Extract therefrom, if under twelve folios - - - - -	0	5	0
If exceeding twelve folios, for each folio beyond twelve - - - - -	0	0	8
Office Copies of Papers and Proceedings to form a Process, to be transmitted to the Court of Appeal, or for any other purpose, for each folio contained therein - - - - -	0	0	8

5. *Fees on Translation of Papers.*

Where Papers are translated, the Registrar should charge the Disbursement actually made to the Translator, with an addition of one-fourth, to compensate himself for his trouble, advance, &c.

6. *Incidental Fees in the Progress of a Cause.*

	Sterling Money.		
	£.	s.	d.
On Subduction of an Action - - - - -	0	6	8
For entering every ordinary Act of Court - - - - -	0	1	4
On every Default pronounced against Parties in contempt, in Cases proceeding in poenam - - - - -	0	5	0
On every Interlocutory Decree or Sentence, including drawing the Act, to be paid by the Party succeeding - - - - -	0	13	4
Sportulage upon every Sentence or Interlocutory Decree, to be paid by each Party in a Suit - - - - -	0	13	4
Sportulage in a Cause terminating without a Sentence or Interlocutory Decree, to be paid by each Party in a Suit - - - - -	0	8	6
For every Attendance before a Judge or Surrogate, at which any Decree is made, other than an Interlocutory or Sentence - - - - -	0	5	0
For a Receipt for original Documents delivered out of the Registry - - - - -	0	2	0
On a Search or Examination of the Records, by any Person not being a Party in the Cause in which the Search is made - - - - -	0	2	6
NOTE.—No Fee to be charged to a Party in the Cause, or to any Seamen applying for Search.			
For advertising an intermediate or extra Court Day, in addition to the sum paid for Advertisement - - - - -	0	6	8

7. *On paying out Money.*

For preparing Receipt for Money to be paid out of the Registry - - - - -	0	1	4
Foundage on Money paid out of the Registry, for every Pound sterling - - - - -	0	0	2

8. *Taxing Costs.*

For taxing a Bill of Costs, if under six folios, from each Party who attends the Taxation - - - - -	0	4	6
If the Bill of Costs exceed six folios, for every additional folio (besides the Fees above-mentioned), to be paid in equal proportions by each Party who attends; and if but one Party attend, to be paid by him solely - - - - -	0	0	6

9. *References of Accounts, &c., by the Judge to the Registrar and Merchants.*

To the Registrar - - - - -	5	5	0
To the Assistant Merchant - - - - -	5	5	0

If two Merchants, Five Guineas each.

BY THE MARSHAL.

	Sterling Money.		
	£.	s.	d.
For arresting a Vessel, Goods, or Person - - - - -	1	1	0
For keeping possession of a Vessel and Cargo, jointly, or either of them singly, when the same are not under the responsible charge and custody of the Officers of the Customs, for each Day in which they remain in the Marshal's Charge - - - - -	0	4	0
For inquiring into, and certifying the sufficiency of Persons proposed as Sureties in any Suit, for each Surety - - - - -	0	5	0
For release of a Vessel, Goods, or Person from Arrest - - - - -	0	5	0
For executing every Monition, or Decree for Answers of a Party, or Compulsory, or other Instrument not specified - - - - -	0	6	8
For every Default or Decree pronouncing for the interest of a Party proceeding in pœnam - - - - -	0	5	0
For every Attendance in Court, when a Sentence or Interlocutory Decree is pronounced - - - - -	0	10	0
For executing every Decree or Commission of Appraisement, exclusive of the Appraiser's Fees, but including the making of the Inventory, if the value should not exceed £500 sterling - - - - -	1	6	8
For the like duty, when the value exceeds £500 sterling - - - - -	2	0	0
For executing every Decree or Commission of Sale of Ship, or Goods, by Public Auction, when the gross proceeds are under £200 sterling - - - - -	1	6	8
And on every additional £100 sterling - - - - -	0	13	4
On attending the execution of a Decree or Commission of Unlivery of Cargo (when not done for the purpose of Sale), per Day - - - - -	2	2	0
For taking a Person in Execution after Sentence, if the sum due from such Person does not exceed £20 sterling - - - - -	1	0	0
For the like duty, when the sum is above £20 and under £50 sterling - - - - -	2	0	0
For the like duty, when the sum is above £50 and under £100 sterling, for every Pound sterling due - - - - -	0	1	0
And on every additional Pound sterling after the first £100 - - - - -	0	0	6

NOTE.—Should it be necessary for the Marshal to go any distance, to execute any of the above duties, there should be paid to him, for loss of time and Travelling Expenses, in addition to the preceding Fees, the following:—

If the distance exceed Two, and be under Four Miles - - - - -	1	1	0
If above Four, and under Eight Miles - - - - -	2	2	0

If the distance be still greater, the allowance to be reasonably increased.

BY THE ADVOCATES.

It is not easy to lay down any precise Rules respecting Fees to Counsel, inasmuch as the amount must depend upon the circumstances of each particular case, with reference to its length, importance, and difficulty.

In all undefended Cases, and in matters of no great difficulty, one Counsel ought to be considered sufficient.

Subject to these observations, the following suggestions are made, for the guidance of the Proctor in feeing Counsel, upon matters which most frequently occur in the progress of a Suit:—

	Sterling Money.		
	£.	s.	d.
Retaining Fee to an Advocate - - - - -	2	2	0
For perusing, settling, and signing Information or Libel, Claim and Affidavit, Act on Petition, responsive Plea (or Replication) to Libel or Information, or Act on Petition, according to the length or difficulty -	1	1	0
For perusing, settling, and signing Interrogatories, Answers, &c. when the same do not exceed twelve folios in length - - - - -	4	4	0
For every additional fifteen folios, to the extent of sixty - - - - -	1	1	0

NOTE.—It should be understood, that in preparing Interrogatories for the cross-examination of Witnesses, they are not to be drawn separately for each Witness, to whom the same are to be administered; but that, when practicable (as in most instances will be the case), one set of Interrogatories should be prepared, generally applicable to all the Witnesses.

For a Consultation in any intermediate stage of the Proceedings, should a necessity arise to resort to Counsel for advice; but this ought not too frequently to occur, and only in cases of difficulty - - - - -	1	1	0
For any Motion necessarily made by Counsel, before the Judge in the progress of a Cause - - - - -	3	3	0
The Fee for the final Hearing must depend upon the length of the Evidence, and the importance and difficulties of the Cause; but, in cases of no great intricacy, the Fee should be from three to five Guineas, and not to exceed the latter sum, unless where the Proceedings are voluminous, or unusually important or difficult - - - - -	1	1	0
	2	2	0
	3	3	0
	5	5	0

BY THE PROCTORS.

Retaining Fee - - - - -	0	6	8
For attending before the Judge or Judge Surrogate, either in Court or Chambers - - - - -	0	6	8
On extracting any Warrant, Monition, Commission, Writ, or other Instrument	0	7	6
Drawing Libel, Information, Plea, Claim, Affidavit, Act on Petition, Interrogatories, Answers, or any other Proceeding whatever, not herein specified, for every folio - - - - -	0	1	4
Fair Copying or Engrossing, for every folio - - - - -	0	0	8

Sterling Money
£. s. d.

For Consultation with Party, for the purpose of taking Instructions for the Libel, Information, Plea, Act on Petition, or for any other important purpose, during the dependance of a Suit - - - - -	0	6	8
For Consultation with Counsel, if any such should be found requisite, preparatory to the final Hearing of a Cause, or otherwise - - - - -	0	13	4
For Attendance on Counsel to see him to peruse, settle, and sign any Information, Libel, Replication, or other Plea, Claim, Affidavit, Act on Petition, Answers, Interrogatories, or other matter, or upon any other occasion that may arise on delivering Papers and seeing Counsel - - - - -	0	6	8
NOTE.—Care should be taken not to increase the number of Attendances or Consultations with Counsel, which ought only to be resorted to when absolutely necessary.			
For any necessary Attendance on the Registrar, or on the adverse Proctor during the Progress of a Cause, to adjust any incidental point in the Suit, or on the Marshal, to instruct him as to the service of any Instrument, reporting Bail, &c. - - - - -	0	5	0
On all Office Copies of Depositions, &c., obtained from the Registrar, one-third of the actual sum paid at the Registry is to be added for trouble of collating and extracting the same.			
For perusing and considering any Papers, Exhibits, or Documents furnished, or introduced into a Cause, by the adverse Party, or furnished by a Party to his own Proctor, for the purpose of being brought forward as Evidence in the Suit, if not exceeding twelve folios - - - - -	0	3	4
For every additional twelve folios - - - - -	0	2	0
For attending Informations on the final Hearing of a Cause, when it occupies only a short time, 10s.; if a few hours, 16s. 8d.; if a whole day, £1. 6s. 8d. - - - - -	0	10	0
		16	s
		or	
	1	6	8

NOTE.—Proceedings for the Forfeiture of Slaves, Ships, or Goods, and for the Recovery of Penalties consequent thereon, have, in some instances, been carried on by two separate Suits; one for the condemnation of the Property, and the other for the Penalties. This mode of proceeding should be discontinued, one Suit being only necessary to accomplish both objects.

Undefended Prosecutions for Breach of the Acts for the Abolition of the Slave Trade.

In all such Prosecutions carried on under one Mouition, where no Party appears to defend—

To the Judge - - - - -	1	10	0
To the Registrar, including a Copy of the Interlocutory Decree, or Sentence - - - - -	3	0	0
To the Proctor - - - - -	4	0	0
To the Advocate - - - - -	1	1	0
To the Marshal - - - - -	0	15	0
	£10	6	0

Approved.

(Signed) HERBERT JENNER.
JOHN DODSON.
STEPHEN LUSHINGTON.

JAMES FARQUHAR.
H. B. SWABEY.
WM. ROTHERY.

