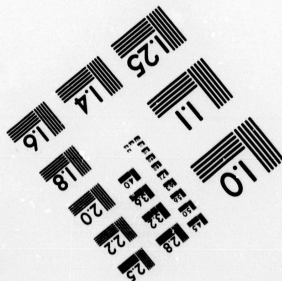
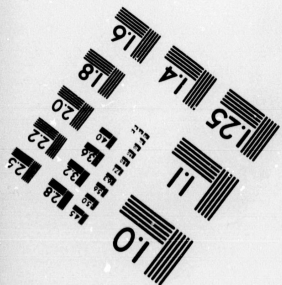
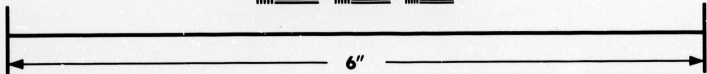
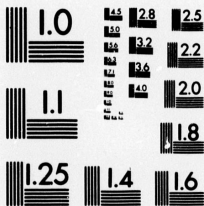


**IMAGE EVALUATION
TEST TARGET (MT-3)**



**Photographic
Sciences
Corporation**

23 WEST MAIN STREET
WEBSTER, N.Y. 14580
(716) 872-4503

**CIHM/ICMH
Microfiche
Series.**

**CIHM/ICMH
Collection de
microfiches.**



Canadian Institute for Historical Microreproductions / Institut canadien de microreproductions historiques

© 1983

Technical and Bibliographic Notes/Notes techniques et bibliographiques

The Institute has attempted to obtain the best original copy available for filming. Features of this copy which may be bibliographically unique, which may alter any of the images in the reproduction, or which may significantly change the usual method of filming, are checked below.

L'Institut a microfilmé le meilleur exemplaire qu'il lui a été possible de se procurer. Les détails de cet exemplaire qui sont peut-être uniques du point de vue bibliographique, qui peuvent modifier une image reproduite, ou qui peuvent exiger une modification dans la méthode normale de filmage sont indiqués ci-dessous.

- Coloured covers/
Couverture de couleur
- Covers damaged/
Couverture endommagée
- Covers restored and/or laminated/
Couverture restaurée et/ou pelliculée
- Cover title missing/
Le titre de couverture manque
- Coloured maps/
Cartes géographiques en couleur
- Coloured ink (i.e. other than blue or black)/
Encre de couleur (i.e. autre que bleue ou noire)
- Coloured plates and/or illustrations/
Planches et/ou illustrations en couleur
- Bound with other material/
Relié avec d'autres documents
- Tight binding may cause shadows or distortion along interior margin/
La reliure serrée peut causer de l'ombre ou de la distorsion le long de la marge intérieure
- Blank leaves added during restoration may appear within the text. Whenever possible, these have been omitted from filming/
Il se peut que certaines pages blanches ajoutées lors d'une restauration apparaissent dans le texte, mais, lorsque cela était possible, ces pages n'ont pas été filmées.
- Additional comments:
Commentaires supplémentaires:

- Coloured pages/
Pages de couleur
- Pages damaged/
Pages endommagées
- Pages restored and/or laminated/
Pages restaurées et/ou pelliculées
- Pages discoloured, stained or foxed/
Pages décolorées, tachetées ou piquées
- Pages detached/
Pages détachées
- Showthrough/
Transparence
- Quality of print varies/
Qualité inégale de l'impression
- Includes supplementary material/
Comprend du matériel supplémentaire
- Only edition available/
Seule édition disponible
- Pages wholly or partially obscured by errata slips, tissues, etc., have been refilmed to ensure the best possible image/
Les pages totalement ou partiellement obscurcies par un feuillet d'errata, une pelure, etc., ont été filmées à nouveau de façon à obtenir la meilleure image possible.

This item is filmed at the reduction ratio checked below/
Ce document est filmé au taux de réduction indiqué ci-dessous.

10X	14X	18X	22X	26X	30X
<input type="checkbox"/>	<input type="checkbox"/>	<input type="checkbox"/>	<input checked="" type="checkbox"/>	<input type="checkbox"/>	<input type="checkbox"/>
12X	16X	20X	24X	28X	32X

The copy filmed here has been reproduced thanks to the generosity of:

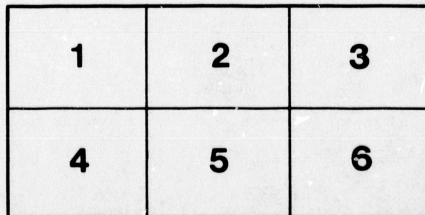
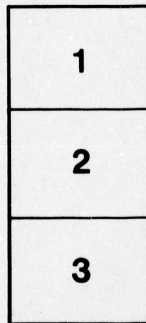
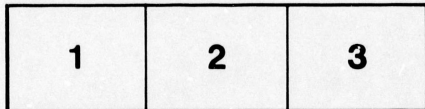
Metropolitan Toronto Library
Canadian History Department

The images appearing here are the best quality possible considering the condition and legibility of the original copy and in keeping with the filming contract specifications.

Original copies in printed paper covers are filmed beginning with the front cover and ending on the last page with a printed or illustrated impression, or the back cover when appropriate. All other original copies are filmed beginning on the first page with a printed or illustrated impression, and ending on the last page with a printed or illustrated impression.

The last recorded frame on each microfiche shall contain the symbol \rightarrow (meaning "CONTINUED"), or the symbol ∇ (meaning "END"), whichever applies.

Maps, plates, charts, etc., may be filmed at different reduction ratios. Those too large to be entirely included in one exposure are filmed beginning in the upper left hand corner, left to right and top to bottom, as many frames as required. The following diagrams illustrate the method:



L'exemplaire filmé fut reproduit grâce à la générosité de:

Metropolitan Toronto Library
Canadian History Department

Les images suivantes ont été reproduites avec le plus grand soin, compte tenu de la condition et de la netteté de l'exemplaire filmé, et en conformité avec les conditions du contrat de filmage.

Les exemplaires originaux dont la couverture en papier est imprimée sont filmés en commençant par le premier plat et en terminant soit par la dernière page qui comporte une empreinte d'impression ou d'illustration, soit par le second plat, selon le cas. Tous les autres exemplaires originaux sont filmés en commençant par la première page qui comporte une empreinte d'impression ou d'illustration et en terminant par la dernière page qui comporte une telle empreinte.

Un des symboles suivants apparaîtra sur la dernière image de chaque microfiche, selon le cas: le symbole \rightarrow signifie "A SUIVRE", le symbole ∇ signifie "FIN".

Les cartes, planches, tableaux, etc., peuvent être filmés à des taux de réduction différents. Lorsque le document est trop grand pour être reproduit en un seul cliché, il est filmé à partir de l'angle supérieur gauche, de gauche à droite, et de haut en bas, en prenant le nombre d'images nécessaire. Les diagrammes suivants illustrent la méthode.

N

I

C

L
O
P
M
T
M
B
A
M
B
N
M
D
C
M
P
L
O
T
D
S

INTERNATIONAL



RAILWAY GUIDE

GIVING THE

TIME-TABLES

OF THE

Grand Trunk Railway of Canada

AND OF ALL RAILWAYS CONNECTING

CANADA AND THE UNITED STATES

1867.

OCTOBER,

1867.

CONTENTS.

	Page		Page
List of Places adjacent to Stations.....	1	Brockville and Sand Point.....	44
Officers of the Grand Trunk Railway... 24	24	Portland, Boston and New York.....	44
Portland and Montreal..... 30, 31	30, 31	St. John's and Waterloo.....	45
Montreal and Toronto..... 32, 33	32, 33	Halifax and Pictou.....	45
Toronto and Detroit..... 34, 35	34, 35	Halifax and Windsor.....	45
Montreal, Lachine and Province Line. 34, 35	34, 35	Suspension Bridge and Windsor.....	46, 47
Buffalo and Detroit..... 36, 37	36, 37	Toronto and Hamilton.....	46, 47
Arthabaska and Three Rivers..... 36	36	Guelph and Harrisburgh.....	46, 47
Montreal and Rouse's Point..... 37	37	London and Sarnia.....	48
Buffalo and Goderich..... 38, 39	38, 39	Petrolia and Wyoming.....	48
New York and Buffalo (Erie Railway). 38, 39	38, 39	St. Andrews and Woodstock Road.....	48
Montreal, Quebec and Riviere du Loup. 40	40	St. John and Shediac.....	49
Detroit and Chicago (Mich. Southern) .. 41	41	Buffalo and Niagara Falls.....	49
Detroit and Milwaukee..... 41	41	Rouse's Point and Ogdensburgh.....	49
Chicago and Milwaukee..... 41	41	Port Dalhousie and Buffalo.....	50
Montreal and Ottawa..... 41	41	Boston, Portland and St. John, N. B.	50
Port Hope and Lindsay..... 42	42	Sumner and Mechanic's Falls.....	51
Port Hope and Peterboro..... 42	42	Detroit and Chicago (Michigan Central) 50, 51	50, 51
London and Port Stanley..... 42	42	Stage Connections.....	50, 51
Ottawa and Prescott..... 42	42	Portland and Boston.....	51
Toronto and Collingwood..... 43	43	Montreal and Boston.....	52
Detroit and Cincinnati..... 43	43	Montreal and New York.....	52
Skowhegan and Portland..... 43	43	Time and Distance Indicator.....	54

MONTREAL:

Published by The Montreal Printing & Publishing Company,
PRINTING HOUSE, 67 GREAT ST. JAMES STREET.

P.385112 E-984 X



223001

ROYAL INSURANCE COMPANY.

FIRE AND LIFE.



CAPITAL - - - - - TWO MILLIONS STERLING

FIRE DEPARTMENT.

JUN 19 1935

Nearly the Largest Insurance Company in the World.

Annual Income £500,000.

Invested Funds in hand to meet Claims, over £800,000.

Advantages to Fire Insurers.

The Company is enabled to direct the attention of the Public to the advantages afforded in this branch.

- 1st. Security unquestionable.
- 2nd. Revenue of almost unexampled magnitude.
- 3rd. Every description of property insured at moderate rates.
- 4th. Promptitude and Liberality of Settlement.

LIFE DEPARTMENT.

LARGE LIFE BONUSES DECLARED IN 1855 AND 1860.

Two per cent. per Annum on Sum Assured.

Being *THE LARGEST BONUS* ever continuously declared by any Office.

Boons to Life Assurers:

The Directors invite attention to a few of the advantages the "Royal" offers to its Life Assurers:—

- 1st. The Guarantee of an ample Capital, and Exemption of the Assured from Liability of Partnership.
- 2nd. Moderate Premiums.
- 3rd. Small charge for Management.
- 4th. Prompt Settlement of Claims.
- 5th. Days of Grace allowed with the most liberal interpretation.
- 6th. Large Participation of Profits by the Assured, amounting to TWO-THIRDS of their net amount, every five years, to Policies then two entire years in existence.

H. L. ROUTH, Agent, Montreal.

MESSRS. FORSYTH, BELL & CO., Agents, Quebec.

MR. GEO. B. HOULISTON.....	Three Rivers
MR. JAMES MORGAN.....	Sorel.
MR. W. COOTE.....	St. Johns
MR. R. J. LONSDALE.....	Lennoxville.
MR. ANDREW THOMSON.....	Belleville.
MR. HENRY J. FREEL.....	Ottawa.
MR. R. A. YOUNG.....	Aylmer.
MR. JOHN DOWSLEY.....	Prescott.
MR. GEO. EASTON.....	Brockville
MESSRS. DEACON & MORRIS.....	Perth.
MR. M. W. STRANGE.....	Kingston.

F. H. HEWARD, Agent, Toronto

MR. WM. BELLHOUSE.....	Hamilton.
MR. F. B. BEDDOME.....	London.
MR. G. M. GOODEVE.....	Cobourg.



STERLING
19 1935

860,000.

es afforded in

D 1860.

Office.

ers to its Life

from Liability

-THIRDS of
ce.

ent, Montreal.

gents, Quebec.

..Three Rivers

..Sorel.

..St. Johns

..Lennoxville.

..Belleville.

..Ottawa.

..Aylmer.

..Prescott.

..Brookville

..Perth.

..Kingston.

gent, Toronto

..Hamilton.

..London.

..Cobourg.

List of Places adjacent to Stations on the Grand Trunk Railway,
and particulars as to the means of communication therewith.

Name of town or village.	Nearest Station.	Distance, Miles.	Mode of Conveyance	Frequency.
Andover Corner.....	Bryant's Pond.....	21	Stage.....	Tri-weekly.
Alexandria.....	Lancaster.....	16	Stage.....	
Algonquin.....	Maitland.....	5	Private.....	
Amherst Island.....	Kingston.....	14	Steamer.....	Daily.
Adolphustown.....	Kingston.....	30	".....	"
Alnwick.....	Cobourg.....	20	Stage private.....	Tri-weekly.
Aurora.....	Buffalo.....	15	Stage.....	Daily.
Alton.....	Brampton.....	17	Private.....	
Arthur.....	Guelph.....	25	Stage.....	3 times daily.
Adaire.....	Lucan.....	5	".....	Twice
Arkina.....	Widder.....	7	".....	Daily.
Armada.....	Ridgway.....	9	".....	Twice daily.
Armada Corners.....	Ridgway.....	9	".....	"
Almont.....	Ridgway.....	26	".....	"
Algenae, (Mich.).....	New Baltimore.....	..	".....	Daily.
Ainleyville.....	Seaforth.....	14	".....	"
Auburn or Manchester	Clinton.....	9	Private.....	
Ashfield, or {	Goderich.....	22	Stage.....	Daily.
Amberly }.....	Goderich.....	22	".....	"
Arkwright.....	Goderich.....	55	".....	"
Addison.....	Brookville.....	12	".....	"
Baileys Hill.....	Empire Road.....	1	Private.....	Daily.
Bridgeton.....	South Paris.....	19	Stage.....	"
Bartlett.....	Gorham.....	33	".....	Every Friday
Berlin.....	Berlin Falls.....	3	Private.....	Daily.
Boulton.....	Island Pond.....	22	Stage.....	"
Barford.....	Boundary Line.....	6	Private.....	"
Barnston Corners.....	Coaticook.....	6	".....	Semi-w'k.
Bury.....	Lennoxville.....	23	Stage.....	Daily.
Bethel.....	New Durham.....	6	Private.....	"
Beloeil.....	St. Hilaire.....	1	".....	"
Becancour.....	Doucets.....	5	".....	"
Blandford.....	Stanford.....	9	".....	"
Bute.....	Becancour.....	5	Stage.....	"
Buckfield.....	Mechs Falls.....	13	Private.....	
Brunswick.....	Stratford Hollow.....	3	".....	
Bloomfield.....	No. Stratford.....	3	".....	
Beebe Plain.....	Coaticooke.....	21	Stage.....	Daily.
Boundary Line.....	Point Levi.....	80	Mail.....	"
Bois Neuf.....	St. Henri.....	40	Private.....	
Bie.....	Riviere du Loup.....	74	".....	
Bonny Eagle.....	Portland.....	19	Stage.....	Daily.
Bildeford.....	".....	16	".....	"
Baldwin.....	".....	22	".....	"
Brommfield.....	".....	42	".....	Tri-weekly
Bridgeton.....	".....	40	".....	"
Bay City.....	Goderich.....	144	Steamer.....	Do. dur'gnav

and eight hundred
since of Canada.

List of Places, &c.—(Continued.)

Name of town or village.	Nearest Station.	Distance, Miles.	Mode of Conveyance	Frequency.
Boston	Portland		Steamer.....	Daily.
Bangor	"		"	Tri-weekly.
Belfast	"		"	"
Buckport	"		"	"
Berwick	Dickinson's Landing..	20	Stage	"
Bells Corners.....	Williamsburg	6	"	"
Brewers Mills.....	Kingston	18	"	"
Bath	"	18	Steamer.....	Daily.
Bridgewater	Belleville	27	"	"
Bloomfield.....	Brighton	27	Stage.....	"
Baltimore	Cobourg	5	"	Tri-weekly.
Bobcaygeon	Port Hope	70	Rail. to Peter boro, thence Stage.....	Daily.
Brooklin	Whitby	6	Stage	Daily.
Brownington.....	"	38	"	"
Beaverton	"	50	"	"
Brougham	Frenchman's Bay		Private	
Berwick	Weston	7	Stage	
Bolton, Ont.	"	18	"	
Ballinafad	Georgetown.....	9	"	Daily.
Bridgeport	Berlin	3	"	"
Bamberg	Petersburg	7	Mail	Bi-weekly.
Belmont.....	London	12	"	Daily.
Brinsley	Lucan	8	Stage	Twice w'kly
Beebe's Corners.....	Ridgeway.....	1	"	4 times a day.
Burke's "	"	9	"	2 " "
Baker's "	"	11	"	Tri-weekly.
Brockway	"	20	2 Daily, Stage to Memphis, thence pri- vate.	
Brockway Centre...	Ridgway	30	2 Daily, Stage to Almonte, livery.....	
Black's Mills.....	"	38	2 Daily, Stage to Almonte, livery.....	
Balmoral	Canfield	12	Mail, private..	
Bloomsbury	Brantford	20	Stage	Daily.
Binford	"	8	Private	
Boston, Ont.....	"	10	"	
Bornholm.....	Mitchell	5	Private	Daily.
Bluevale	Seaforth	40	Stage.....	"
Bayfield	"	15	"	"
Brucefield	"	6	"	"
Blythe	Clinton	11	"	"
Belgrave.....	"	17	"	"
Bodwin	"	19	"	"
Belfast	Goderich.....	19	"	"
Beauharnois	Caughnawaga	15	Mail	"
Bogtown	Johnsons	5	Private	
Bangall.....	"	4	"	
Beaver Meadow.....	Lacolle	6	"	
Berthier en bas.....	St. Francois.....	3	"	
Bellford	Port Union	8	"	
Bishop's Mills	Prescott	10	"	

List of Places, &c.—(Continued.)

Frequency.	Name of town or village.	Nearest Station.	Distance, Miles.	Mode of Conveyance.	Frequency.
Daily.	Cumberland Centre..	Cumberland.....	3	Private	
Tri-weekly.	Casco	Oxford	12	Stage	Tri-weekly.
"	Carroll	Northumberland.....	26	"	"
"	Coventry	Island Pond.....	25	"	Daily.
"	Compton Centre.....	Compton	1½	"	Twice daily.
"	Clifton, Q	"	6	"	Semi weekly
Daily.	Cookshire	Lennoxville.....	13	"	Daily.
"	Carlton	Mechanics Falls	25	Private	
"	Columbia, N. H.....	North Stratford	4	Stage	Daily.
Tri-weekly.	Colbrook, N. H	"	14	"	"
Daily.	Clarksville, N. H.....	"	23	"	"
"	Canaan, Vt.....	"	25	"	"
"	Cookshire	Lennoxville.....	16	"	"
Daily.	Castlebar	Danville	3	Private	
"	Chester	Arthabaska	9	"	
"	Chateau Richer.....	Quebec	15	"	
"	Cranborne	Point Levi.....	49	Mail private..	Tri-weekly.
"	Charlesbourg	Quebec	6	Private	
"	Cap Rouge	"	9	Stage	Daily.
"	Cacouna	Rivière du Loup ..	8	Private	
Daily.	Como	St. Anne's in Summer }	7	Steamer ... }	Daily.
Bi-weekly.		Vaudreuil in Winter.. }		Stage..... }	
Daily.	Carrillon	"	25	"	"
Twice w'kly	Chatham	"	31	"	"
4 times a day.	Cornish	Portland.....	30	"	"
"	Conway, N. H.....	"	60	"	Tri-weekly.
Tri-weekly.	Custine	"	Steamer	"
"	Cryslers	Dickinson's Landing	23	Stage	"
"	Cambridge	"	28	"	"
"	Cainstown	Mallorytown	4	Private	
"	Colesferry	Lyn	2½	"	
"	Clayton	Gananoque.....	12	Ferry	
"	Clark's Mills.....	Napanee.....	9	Stage	Daily.
"	Campbellford	Brighton.....	20	Private	
"	Codrington	"	9	"	
"	Consecon	"	15	"	
"	Cold Springs.....	Cobourg	6	Stage	Tri-weekly.
"	Columbus	Whitby	12	"	Daily.
Daily.	Clairmont.....	Frenchman's Bay	Private	
"	Clareville	Weston.....	9	Stage	
"	Caledon East.....	Malton.....	16	"	Daily.
"	Churchville	"	10	"	"
"	Cheltenham	Brampton.....	12	Private	
"	Cataract	"	14	"	
"	Campbell's Cross	"	9	Stage	Daily.
"	Claude	"	12	"	"
"	Charlestown	"	17	"	"
"	Camilla	"	20	Private	
"	Caledon	"	15	Stage	Daily.
"	Conestoga	Berlin	8	"	"
"	Carlingford	Stratford.....	11	Private	
"	Crediton	Lucan	12	Stage	Twice w'kly.
"	Carlisle, (Falkirk)..	A. Craig	3½	Private	
"	Corunna	Sarnia	12	Boat.....	
"	Columbus	Ridgway.....	3	Livery stable.	
"	Capac	"	21	Stage	Tri-weekly
"	Clifton.....	"	24	Stage to Romeo, 2 daily, thence livery.	

List of Places, &c.—(Continued.)

Name of town or village.	Nearest Station.	Distance, Miles.	Mode of Conveyance.	Frequency.
Cayuga	Canfield	6	Mail	Daily.
Castorville	"	6	" & private.	Tri-weekly.
Canboro	"	4	"	"
Cheapside	Caledonia	20	Stage	Daily.
Carlingford	Mitchell	8	Private	"
Carlow, (Smith's Hills)	Goderich	6	Stage	Daily.
Chateauguay	Caughnawaga	5	Mail	"
Clarenceville	Lacolle	3	Private	"
Charlesville	Bowmanville	10	Stage	Daily.
Charleville	Prescott	8	Private	"
Durham	North Yarmouth	7	Stage	Daily.
Danville	New Gloucester	4	Team	"
Dixfield	Bryant's Pond	23½	Stage	Tri-weekly.
Dalton	Northumberland	18	"	"
Derby Centre	Island Pond	18	"	Daily.
Derby Line	"	22	"	"
Drummondville	Richmond	24	"	"
Dalhousie Mills	Coteau Landing	15	Private	"
Denmark	Portland	40	Stage	Tri-weekly.
Dixon's Corners	Matilda	7	Private	"
Demorestville	Shannonville	9	Ferry	Daily.
Dunbarton	Frenchman's Bay	1½	Private	"
Derry, West	Malten	5	Stage	"
Dundas	Guelph	25	"	"
Durham, Ont.	"	56	"	Tri-weekly.
Delaware	London	14	Mail	Daily.
Devon	Lucan	7	Stage	Twice daily.
Dryden	Ridgway	17	"	"
Dixie	"	26	Daily Stage to Romeo, thence liv'ry	Tri-weekly.
DeCewsville	Canfield	9	Mail & private	Daily.
Dungannon	Goderich	12	Stage	"
Durham	Caughnawaga	29	"	"
Dewittville	"	34	"	"
Delta	Brockville	24	"	"
Dundee, P. Q.	Cornwall	14	Stm. & private	"
East Pownal	North Yarmouth	3	Stage	Daily.
East Orlisfield	Oxford	6	"	Tri-weekly.
East Gilead	W. Bethel	3	Private	"
East Danmore	Berlin Falls	12	Steamer	Any time.
East Charleston	Island Pond	7	Stage	Daily.
East Burke	"	18	"	"
East Hatley	Compton	7	"	"
Eaton	Lennoxville	13	"	"
East Bethel	Lock's Mills	5	Private	"

List of Places, &c.—(Continued.)

Name of town or village.	Nearest Station.	Distance, Miles.	Mode of Conveyance.	Frequency.
Glenhouse	Gorham	8	Stage	Three times a day in summer.
Guildhall	Northumberland	4	"	
Grafton	Bethel	22	"	Semi-weekly
Gilbert River	St. Henri	52	Private	
Green Island	Riviere du Loup	18	"	
Grand Falls	"	116	Stage	
Grenville	Vaudreuil	37	"	Daily.
Gorham Factory	Portland	13	"	"
Garden Island	Kingston	2½	Ferry	"
Gore's Landing	Cobourg	12	Stage	Tri-weekly.
Greenwood	Duffin's Creek	6	Private	
Grahamsville	Malton	1½	Stage	Daily.
Glenwilliam	Georgetown	1½	Private	
Glen Allan	Berlin	22	Stage	"
Greenock	Goderich	30	"	Tri-weekly.
Harrison	South Paris	14	Stage	Daily.
Huntingville	Lennoxville	3	"	"
Hebron	Mechanics Falls	8	Private	
Hartford	"	21	"	
Hereford	Coaticook	16	"	
Ha! Ha! Bay	Riviere du Loup	90	Steamboat ..	" in sum'r.
Hawkes ry	St. Anne's in Summer } Vaudreuil in Winter.. }	37 }	Steamer ... } Stage	" "
Hudson	"	9	"	"
Hiram	Fortland	36	"	Tri-weekly.
Harpwell	"	Steamer	Daily.
Halifax	"	"	Weekly.
Hilton	Brighton	4	Private	
Hillier	"	25	"	
Hornby	Georgetown	9	"	
Hillsburg	"	16	Stage	Daily.
Hamilton	Guelph	30	"	"
Hawkesville	Berlin	12	"	"
Heidelberg	"	7	"	"
Hillsboro'	Forrest	5	"	Tri-weekly.
Hamilton Corners ..	Camlachie	4	Mail	Daily.
Honejoi	Ridgway	9	Stage	Twice daily.
Hagersville	Caledonia	9	"	Daily.
Hullsville	"	11	"	"
Hamilton	"	14	"	Twice daily.
Howick, O	Seaforth	20	"	Daily.
Howick, Q	Caughnawaga	19	"	"
Huntingdon	"	39	"	"
Henrysburg	Lacolle	5	Private	
Highland Creek	Port Union	3	"	
Haysville	Hamburg	3	"	
Hogansburg, N. Y. ...	Cornwall	10	Stmr. private	
Hampton	Bowville	7	Stage	

List of Places, &c.—(Continued.)

Name of town or village.	Nearest Station.	Distance, Miles.	Mode of Conveyance.	Frequency.
Lorette.....	Quebec	9	Stage	Daily.
Lake Beauport.....	"	12	"	"
Lac St. Francis.....	St. Henri.....	82	Private.....	
Lake of Three Salmon	"	7	"	
Little Falls, N. B....	Rivière du Loup	80	Stage.....	Tri-weekly
L'Original.....	{ St. Anne's in Summer } { Vaudreuil in Winter.. }	42	"	Daily.
Limington.....	Portland.....	24	"	"
Limerick.....	"	25	"	"
Lochiel.....	Lancaster.....	22	"	
Loch Gary.....	"	14	"	
Lansingburg.....	Dickinson's Landing..	4	"	Tri-weekly.
Lonsdale.....	Tyendinaga.....	3	Private	
Lakefield.....	Port Hope.....	37	Rail to Peter- boro', thence by stage....	Daily.
Leskard.....	Newcastle.....	8	Mail.....	Tri-weekly.
Lambton.....	Carlton.....	2	No regular means of communic'n	
Lisbon.....	Baden.....	7	Stage.....	Daily,
Lakeport.....	Port Huron.....	10	Stage and boat	"
Lexington.....	"	20	"	"
Lennox.....	Ridgeway.....	1	"	4 times daily.
Lakeville.....	"	27	Livery	
Listowel.....	Mitchell.....	22	Stage.....	Daily.
Landesborough.....	Clinton.....	6	"	"
Lueknow.....	Goderich.....	22	"	"
Lacolle.....	Lacolle.....	2	Mail.....	"
Minot.....	Empire Road.....	1	Mail Team...	Twice a day.
Milton Plantation ...	Bryants Pond.....	6	Stage.....	Daily.
Mason.....	West Bethel.....	4½	Private.....	
Mount Washington..	Gorham.....	16	Stage.....	3 times a day in summer.
Milan Corner.....	Berlin Falls.....	8	Team.....	4 times week
Melbourne.....	Richmond.....	1	Stage.....	3 times a day
Melbourne Ridge....	"	9	"	Tri-Weekly.
Magog.....	Sherbrooke.....	17	"	Daily.
Milton.....	St. Hyacinthe.....	18	Mail.....	Daily.
Maddington.....	Stanford.....	17	Private.....	
Montmorenci.....	Quebec.....	8	"	
Murray Bay.....	Rivière du Loup....	45	Steamboat ..	Daily in sum.
Mongenais.....	Coteau Landing.....	22	"	
Martintown.....	Lancaster.....	12	Stage.....	
Mayfield.....	"	4	"	
Makece Springs.....	Dickinson's.....	6	Ferry.....	
Macona.....	Aultsville	7	"	
Morrisburg.....	Williamsburg.....	1	Stage.....	Daily.
Merrickville.....	Maitland.....	23	Private.....	
Marble Rock.....	Gananoque.....	3	"	
Morton.....	Kingston.....	30	Stage.....	Tri-weekly.
Marysburg.....	"	24	Steamboat...	Daily.
Mill Point.....	Napanee.....	6	Private.....	

List of Places, &c.—(Continued.)

Name of town or village.	Nearest Station.	Distance, Miles.	Mode of Conveyance.	Frequency.
North Ham	Arthabaska	19	Private	
New Liverpool or Etchemin	Chaudière Curve	3	"	
Newfield	Portland	30	Stage	Tri-weekly.
New York	"	Steamer	Twice a w'k.
Notfield	Lancaster	18	Stage	
Newington	Dickinson's Landing ..	10	"	Tri-weekly.
North Augusta	Maitland	11	Private	
Newburg	Napanee	7	Stage	Daily.
Northport	Shannonville	5	Ferry	"
North Douro	Port Hope	Ray to Peterboro, thence by stage ..	"
Newtonville (village)	Newtonville	3	Private	
Norval	Norval	1½	"	
Nassagaweya	Rockwood	8	"	
New Dundee	Petersburg	6	"	"
Nithburg	Shakspeare	8	"	
Nilestown	London	6	Mail	"
Nairn	Ailsa Craig	3	Private	
New Baltimore	New Baltimore	5	Stage	Twice daily.
New Durham	Brantford	17	Private	
Newport	"	20	"	
Norwichville	"	3	"	
Newery	Mitchell	16	Stage	Daily.
Norton Creek	Hemmingford	10	Private	
Napierville	Stottsville	7	"	
Newboro'	Brockville	38	Stage	"
Ownstown	Caughnawaga	28	Stage	Daily.
Oxford Village	Oxford	2	{ Coach	3 times a day
Orleans Island	Quebec	6	{ Stage	Tri-weekly.
Ospee, N. H.	Portland	40	Ferry Steam'r ..	Daily.
Otisfield	"	40	Stage	Tri-weekly.
Osnabruck Centre ..	Dickinson's Landing ..	7	"	"
Odessa	Kingston	12	"	Daily.
Orena	Newcastle	5	Mail	"
Orangetown	Brampton	22	Private	
Owen Sound	Guelph	87	Stage	3 times, daily
Oil Springs	Sarnia	18	" & Boat	Daily.
Oaklands	Brantford	8	"	"
Odelltown	Lacolle	3	Private	
Paris Hill	South Paris	3	Hack	Every train.
Peru	Mechanics Falls	29	Private	
Poland	"	4	"	
Pittsburg, N. H.	North Stratford	30	Stage	Daily.
Pacquetville	Coaticook	24	Private	
Pintendre	St. Henri	2	"	

Nan

Poi

Por

Pict

Pri

Por

Pin

Pais

Phil

Poo

Pro

Pet

Pim

Por

Por

Por

Por

Pin

Por

Por

Per

Phil

Run

Ran

Riv

Rox

Riv.

Rim

Rig

Ray

Roc

Roc

Ros

Rog

Ray

Roc

Riel

Ron

Ray

Roc

Ros

Roy

Riv

Reh

Rus

Rus

List of Places, &c.—(Continued.)

ce.	Frequency.	Name of town or village.	Nearest Station.	Distance, Miles.	Mode of Conveyance.	Frequency.
		Point Fortune.....	St. Anne's in Summer } Vaudreuil in Winter. }	24	Steamer ... } Stage }	Daily.
	Tri-weekly.	Porter	Portland.....	35	"	"
	Twice a w'k.	Pittsburg	Gananoque.....	26	Private.....	"
		Picton.....	Belleville	26	Stemr., Stage.	Daily.
	Tri-weekly.	Prince Albert.....	Whitby	18	Stage	"
		Port Perry.....	"	20	"	"
	Daily.	Pine Grove	Weston.....	8	"	"
	"	Paisley	Goderich.....	76	Steamer.....	Daily.
ter-		Phillipsburg	Baden	5	"	Daily.
nce		Poole	Stratford.....	16	"	Tri-Weekly.
	"	Prospect Hill.....	Granton	3	Private	"
		Petrolia	Sarnia.....	15	Stage, Boat..	Meet all trai's
		Pinnebagg	Port Huron.....	89	"	Daily.
	"	Port Huron.....	Port Huron	1 1/2	Street car...	Every 1/2 hour
	"	Port Maitland.....	Dunnville	6	Private	"
	"	Port Dover.....	Caledonia	23	Stage	Daily.
	"	Port Rowan.....	Brantford	36	"	"
		Port Albert.....	Goderich.....	10	"	"
	Twice daily.	Pine River.....	"	28	"	"
		Port Bruce	"	50	Steamer.....	Daily.
		Port Elgin.....	"	60	"	" during navigation
	Daily.	Percy's Corners.....	Hemmingford.....	18	Private.....	"
	"	Phillipsville.....	Hamburg	3	"	"
		Rumford Corner.....	Bryant's Pond.....	10	Stage.....	Daily.
		Randolph	Gorham	6	"	Every Friday
	Daily.	River David	Upton	30	Private.....	"
	3 times a day	Roxton Falls	Acton.....	6	Stage.....	Daily
	Tri-weekly.	Riv. Ouelle (Village).	River Ouelle.....	4	Private.....	"
	Daily.	Rimouski.....	Riviere du Loup	66	"	"
	Tri-weekly.	Rigaud	St. Anne's in Summer } Vaudreuil in Winter. }	16	Stage	Daily.
	"	Raymond	Portland.....	30	"	Tri-weekly
	"	Rockland.....	"		Steamer	"
	Daily.	Rockport	Mallorytown.....	9	Private	"
		Roslin	Belleville	12	Steamer	Daily.
		Rogerville	Lucan	17	Stage.....	"
	3 times, daily	Ravenswood	Widder	7	Mail	Tri-weekly.
	Daily.	Rock Falls.....	Port Huron	60	Stage.....	Daily.
	"	Richmond	Ridgeway	1	"	4 times daily.
		Romeo	"	15	"	Twice
		Ray	"	14	"	"
		Rochester	"	30	Stage Twice a day, Romeo	Thence by liv.
		Roseville	Utica	4	Private	"
		Roy's Corners	Mitchell.....	6	Private	"
	Every train.	Riversdale.....	Goderich.....	35	Private	"
		Reham	Hemmingford	5	"	"
		Russeltown	"	13	"	"
	Daily.	Roxboro'	Cornwall.....	15	"	"

List of Places, &c.—(Continued.)

Name of town or village.	Nearest Station.	Distance, Miles.	Mode of Conveyance.	Frequency.	Name
Shaker Village	New Gloucester.....	7	Private.....	Daily.	St. C
South Poland.....	Empire Road.....	5	".....	Any time.	St. M
Stanstead Plain.....	Coaticook.....	18	Stage to Beebe Plain, thence Rail.....	Daily.	St. F
St. Johnsbury	".....	32	".....	".....	St. L
Sawyerville	Lennoxville	19	".....	".....	St. I
St. Germain	Upton	16	Private.....	".....	St. I
St. Hélène	".....	7	Mail.....	Tri-weekly.	St. E
St. Valerien	Upton	6	Private.....	".....	St. E
Sunmer	Mechanics Falls	14	Mail.....	Tri-weekly.	Sydn
Stewartstown	North Stratford.....	22	Stage.....	Daily.	St. V
St. Pie.....	St. Hyacinthe.....	16	Mail.....	".....	St. G
St. Simon	".....	9	".....	".....	St. C
St. Barnabé.....	".....	9	".....	".....	St. A
St. Dominique.....	".....	6	".....	".....	St. P
St. Damase.....	".....	9	".....	Tri-weekly.	St. A
St. Rosalie.....	".....	3	".....	Daily.	St. G
St. Jude.....	".....	12	".....	Tri-weekly	St. A
St. Guillaume d'Upton	".....	27	".....	".....	St. E
St. Mathias.....	St. Hilaire.....	6	".....	Daily.	St. P
St. Jean Baptiste	".....	6	".....	".....	St. Z
St. Charles.....	".....	9	".....	".....	Stand
St. Marc	".....	9	".....	".....	Stee
St. Denis	".....	15	".....	".....	Saco
St. Antoine	".....	15	".....	".....	Sibag
St. Ours	".....	21	".....	".....	St. J
St. Roch	".....	21	".....	".....	
St. Bruno	Boucherville.....	1	Private.....	".....	Samy
St. Joli	".....	5 $\frac{1}{2}$	".....	".....	St. R
St. George de Windsor	Danville	10 $\frac{1}{2}$	".....	".....	South
St. Hypolite de Vallière	".....	12	".....	".....	South
St. Camille	".....	17	".....	".....	South
St. Albert	".....	8	".....	".....	Syde
St. Patrick's Hill	".....	5	".....	".....	Stirlin
St. Christophe	Arthabaska.....	3	".....	".....	Smith
South Main	".....	27	".....	".....	St. Al
St. Norbert.....	".....	9	".....	".....	Sprin
St. Valois de Bulstrode	".....	9	".....	".....	Sandl
St. Gregoire	Doucet's.....	5	".....	".....	Slesw
St. Sophie	Somerset.....	1	".....	".....	Stanl
St. Flavien.....	Methot's Mills	4	".....	".....	Stree
St. Croix	".....	15	".....	".....	Salm
St. Agathé	".....	8	".....	".....	Stew:
St. Sylvestre	".....	20	".....	".....	Silve:
St. Etienne.....	".....	3	".....	".....	Salen
St. Anne's	Quebec	21	".....	".....	Saug
St. Foy	".....	5	Stage.....	Daily	ton
St. Isidore	Point Levi	18	Mail.....	".....	St. J
St. Mary	".....	30	".....	".....	St. Cl
St. Joseph	".....	39	".....	".....	St. A
St. François	".....	49	".....	".....	Sebas
St. George	".....	62	".....	".....	Sebri
St. Anselme.....	".....	16	Private & Mail	Mail tri-w'k.	St. Jc
St. Anedine.....	".....	25	".....	".....	Sylva
St. Marguerite.....	".....	34	".....	".....	Saubl

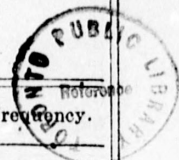
List of Places, &c.—(Continued.)

of nee.	Frequency.	Name of town or village.	Nearest Station.	Distance, Miles.	Mode of Conveyance.	Frequency.
		St. Claire	Point Levi	39	Private & Mail	Mail tri-w'k.
		St. Malachie	"	24	" "	"
	Daily.	Stanton	"	32	" "	"
	Any time.	St. Féréole	St. Henri	2	Private	
		St. Henri	"	3	"	
		St. Lambert	"	9	"	
	Daily.	St. Henedine	"	17	"	
		St. Barnard	"	18	"	
		St. Elzear	"	18	"	
		St. Ephreme	"	55	"	
	Tri-weekly.	Sydney	"	61	"	
		St. Victoire	"	85	"	
	Tri-weekly.	St. Gervais	St. Charles	5	"	
	Daily.	St. Cyrille	L'Islet	5	"	
		St. Aubert	St. Jean	1½	"	
		St. Pacome	Rivière Ouelle	1	"	
		St. André	St. Alexandre	6	"	
		St. Geneviève	Point Claire	3	"	
	Tri-weekly.	St. Andrews	Vandreuil in Winter..	25	Stage	Daily.
	Daily.	St. Eugene	"	26	"	"
	Tri-weekly	St. Polycarpe	Coteau Landing	6	Private	
		St. Zotique	"	3	Mail	Daily.
	Daily.	Standish	Portland	16	Stage	Daily.
		Steep Falls	"	37	"	"
		Saco	"	14	"	"
		Sibago	"	33	"	Tri-weekly
		St. Johns	"	Steamer	Twice a w'k in sun'r, 1 do in win.
		Summerstown	Lancaster	7	Stage	
		St. Raphael	"	8	"	
		South Finch	Dickinson's	16	"	Tri-weekly.
		South Mountain	Matilda	25	Private	
		South Lake	Gananoque	3	"	
		Sydenham	Kingston	16	Stage	Daily.
		Stirling	Belleville	14	Steamer	"
		Smithfield	Brighton	4	Private	
		St. Andrews	Weston	4	Stage	Daily.
		Springville	Buffalo	30	"	"
		Sandhill	Malton	12	"	"
		Sleswick	"	18	"	"
		Stanley Mills	"	6	"	"
		Streetsville	Brampton	12	Private	
		Salmonville	Norval	5	"	
		Stewartown	Georgetown	2	"	
		Silver Creek	"	3½	Stage	Daily.
		Salena	Guelph	14	"	3 times d'ly.
		Saugeen or Southamp- ton	Goderich	65	Steamer	Daily.
	Daily	St. Jacobs	Berlin	8	"	"
		St. Clemens	"	9	"	"
		St. Agatha	Petersburg	2½	Mail	"
		Sebastopol	Shakspeare	2	Private	
		Sebringville	Stratford	5	"	
		St. Johns	London	6	Mail	Daily.
	Mail tri-w'k.	Sylvan	Pk. Hill	5	Private	
		Sauble	"	4	"	

List of Places, &c.—(Continued.)

Name of town or village.	Nearest Station.	Distance, Miles.	Mode of Conveyance.	Frequency.	Name of
Sarnia	Sarnia	3	Stage & Boat.	Daily.	Ulvert
Sandbeach	Port Huron	62	"	"	Upton
Smith's Corners	Ridgeway	15	"	Tri-weekly.	Uxbri
St. Clair	Ridgeway	14	Stage	Daily.	Utica
Stony Creek	Utica	15	Private	"	Under
Stromness	Dunnville	5	"	"	Union
South Cayuga	"	7	"	"	
Selkirk	Caledonia	14	Stage	"	
Sinclairville	Canfield	6	Private	"	
Scotland	Brantford	14	Stage	"	
Simcoe	"	24	"	"	
Strathallen	Tavistock	7	Private	"	Valley
Smith's Falls	Goderich	6	Stage	"	Vern
St. Helen's	"	13	"	"	Vittor
Seone	"	70	"	"	Varma
St. Philomene	Caughnawaga	8	"	"	
St. Martin	"	5	"	"	
St. Isidore	St. Isidore	3	Private	"	
St. Urbain	"	6	"	"	
St. Pierre	"	4	"	"	
St. Antoine Abbe	St. Remi	21	Stage	Daily.	West
St. Jean Chrysostôme	"	15	"	"	Walru
St. Edouard	"	6	"	"	West
St. Michel	Lapigeonnière	6	"	"	Water
Sherrington	Johnson's	5	Mail	Tri-weekly.	Work
St. Valentin	Stottsville	3	Mail	Daily.	Water
St. Thomas	"	2	Ferry	"	White
St. Francois	St. Francois	3	Private	"	West
St. Pierre	"	3	"	"	Willou
St. Roch	St. Roch	"	"	West
St. Louise	"	"	"	West
Stouffville	Port Union	16	"	Daily.	West
Summerstown	Cornwall	8	"	"	Wains
St. Andrew's	"	7	Mail	"	West
Saginsw	Goderich	164	Steamer	Tri-w'kly d'g navigation	Wickl
		37			West
Troy	Island Pond	1	Stage	Daily.	West
Three-Rivers	Doucet's Landing	32	Ferry	"	Windl
Trois Pistoles	Rivière du Loup	20	Private	"	Winte
Tadousac	Rivière du Loup	36	Steamboat	" in sum'r	Willia
Tamworth	Napanee	22	Stage	Daily.	Wood
Thomasburg	Belleville	22	Steamer	"	Wincl
Tweed	"	8	"	"	Wood
Tullamore	Malton	12	Stage	"	Water
Thamesford	Thorndale	14	Private	"	Wolf
Tetersville	Brantford	20	"	"	Welli
Trowbridge	Mitchell	45	Stage	Daily.	Wars
Tiverton	Goderich	31	Steamer	Daily.	
Teeswater	Clinton	65	"	"	
Tara	Goderich	9	"	"	White
Tyrone	Bowmanville	"	"	Willia
					White
					Whitt
					Walk
Upper Gloucester	New Gloucester	24	Mail route	Arriv. of train	Water

List of Places, &c.—(Continued.)

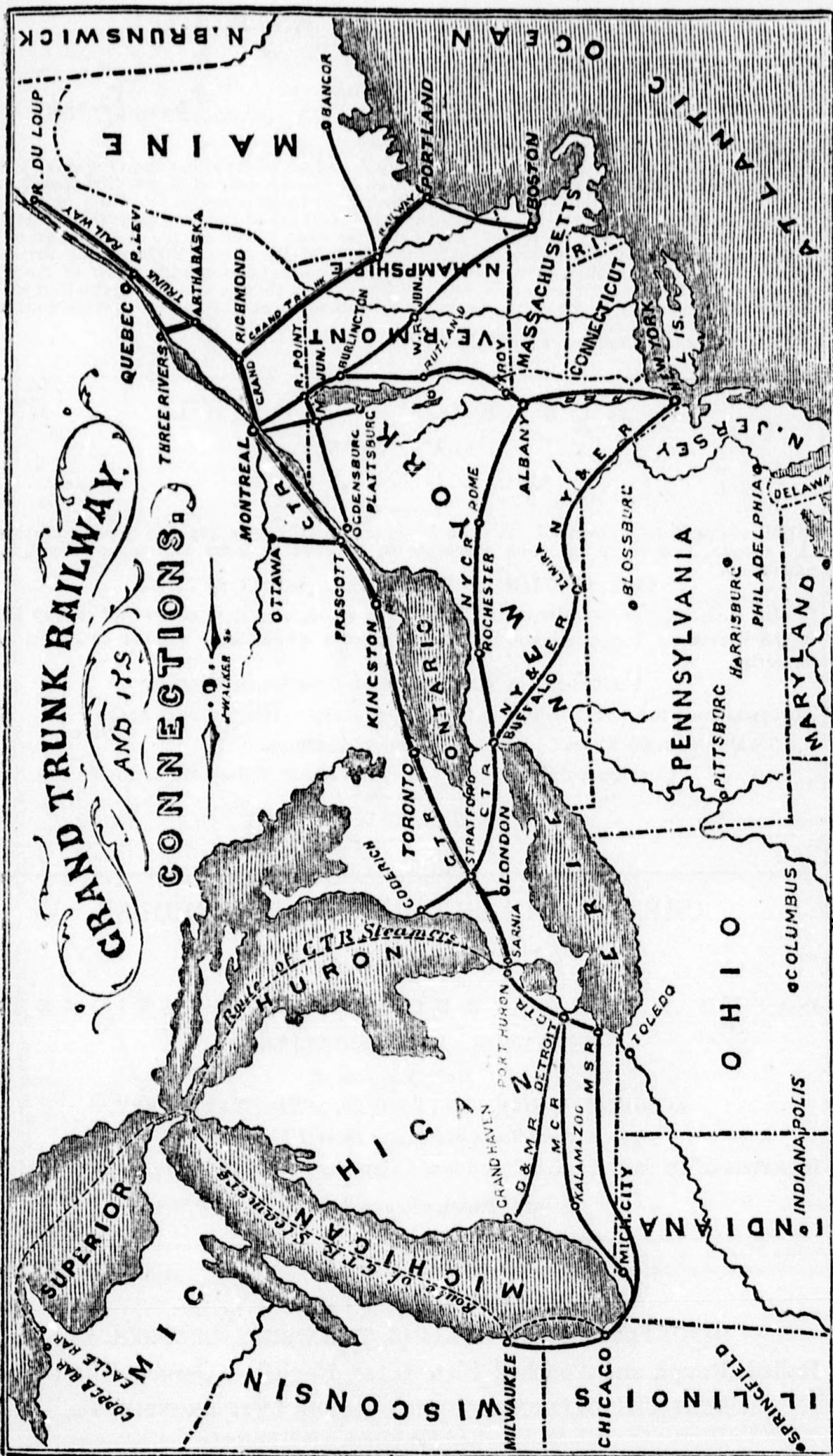


Frequency.	Name of town or village.	Nearest Station.	Distance, Males.	Mode of Conveyance.	Frequency.
daily.	Ulverton.....	Richmond	10	Stage	Daily.
	Upton	Bethel	26	"	Semi-weekly
tri-weekly.	Uxbridge	Whitby	22	"	Daily.
daily.	Utica	Utica	8	Private	
	Underwood	Goderich.....	50	Steamer	Daily.
	Unionville	Brockville.....	9	"	"
	Valleyfield	Coteau Landing	9	Mail	
	Vermontown	Whitby	38	Stage	Daily
	Vittoria.....	Brantford	32	"	
	Varma	Seaforth	6	"	"
daily.	West Durham	North Yarmouth	7	Stage	Daily.
"	Walnut Hill	"	3	Private	"
"	West Pownal	Pownal	0	"	
tri-weekly.	Waterman's Mills.....	Empire Road.....	1	"	Any time,
daily.	Workman's Hill	"	4	"	"
	Waterford	South Paris	12	Stage	Tri-weekly.
	Whitefield, N. H.....	Northumberland	18	"	
	West Charleston.....	Island Pond	13	"	Daily.
	Willoughby Lake.....	"	20	Private	
	West Hatley	Compton.....	9	Stage	Daily.
	West Minot	Mechanics Falls.....	4	Private	
daily.	West Pcland.	"	8	"	
	Wainstown, Vt	Stratford Hollow	2	"	
	West Stewartown	North Stratford	24	Stage	Daily.
tri-w'kly d'g navigation	Wickham	Durham	14	Private	
	West Chester	Stanford	8	"	
	West Gorham	Portland	13	Stage	Daily.
	West Point	"	18	"	"
daily.	West Buxton	"	20	"	"
"	Windham Hill	"	16	"	Tri-weekly.
	Winterport.....	"	Steamer	"
" in sum'r	Williamstown	Lancaster	5	Stage	
daily.	Woodland	Dickinson's Landing	3	"	Daily.
"	Winchester	Williamsburg	18	"	Tri-weekly.
"	Woodburn	Gananoque	4	Private	
"	Waterloo	Kingston.....	3	Stage	Daily.
	Wolf Island	"	4	Ferry	"
	Wellington.....	"	45	Steamer	"
daily.	Warsaw	Port Hope	40	R'y to Peter-	
daily.				boro', thence	
				by stage ..	"
	Whitevale	Frenchman's Bay		Private	
	Williamsville	Buffalo	11	Stage	Daily.
	White's Corners	"	11	"	"
	Whittington	Brampton	40	Private	
	Walkerton	Guelph	66	Stage	3 times daily
priv. of train	Waterloo	Berlin.....	2	"	Twice

List of Places, &c.—(Continued.)

Name of town or village.	Nearest Station.	Distance, Miles.	Mode of Conveyance.	Frequency.
Wellesley	Baden	9	Stage	Daily.
West Corners	Stratford	17	"	Tri-weekly.
Winterborne	Breslau	5	
Whitney	Thorndale	3	Private	
West McGillivray ..	Pk. Hill	5	"	
Wales	Ridgeway	11	Livery	
Washington	"	24	Stage	Daily.
Wellandport	Danville	12	Private	
Wolfstown	Somerset	24	Private	
Waterford	Paris	13	Stage	Daily.
Wolverton	Drumbo	3	Private	
Washington	"	5	"	
Woodstock	Tavistock	14	"	
West Monkton	Mitchell	10	Stage	Daily.
Walton	Seaforth	10	"	"
Wroxeter	"	24	"	"
Walkerton	"	37	"	"
Wingham	Clinton	22	"	"
West Arran	Goderich	70	"	"
Westport	Brockville	45	"	"
Williamsburg	Bowmanville	18	"	"
York	Caledonia	5	Stage	Daily.
Zetland	Clinton	24	Stage	Daily.

C K
 R. DU LOUP
 TRUNK P. N.
 SUP



frequency.

ily. weekly.

ily.

ily.

ily.

ily.

ily.

S T . L A W R E N C E H A L L ,
Great St. James Street,
MONTREAL.

H. HOGAN,..... PROPRIETOR.

This First-class Hotel, the largest in Montreal, and which has long been regarded by the Travelling Public as the most popular and fashionable resort, is situated opposite the Post Office, and contiguous to the Banks, French Cathedral, or Church Ville Marie, the Champ de Mars, where the Troops are reviewed, and other Public Institutions. It has been under the charge of its present Proprietor for over fifteen years. A large part of the Hall was engaged by the Government for the Suite of His Royal Highness the Prince of Wales on his visit to this city. The Proprietor would take this opportunity of thanking his numerous friends for past favors, and to inform them that he has during the past winter built a large addition to the Hall, and hopes in future to be able to accommodate all who may favor his establishment.

Telegraphic communication from the Hotel.

4.7

R U S S E L L ' S H O T E L ,
PALACE STREET,
Q U E B E C , C . E .

The above Hotel, known all over the Province, is still open for the accommodation of Guests, and every attention continues to be paid to those who favor it with their patronage.

THE ST. LOUIS HOTEL, ST. LOUIS STREET,

Is also open. Extensive alterations have been made, and it is now equal to any Hotel in the Province. There is house commodation for a much larger number of guests than formerly.

Carriages in summer, and Sleighs in Winter

Always at hand to convey Visitors to the various places of interest, such as the

Montmorency Falls,

Plains of Abraham,

Chaudiere Falls,

The Indian Village of Lorette, &c., &c.

T E R M S M O D E R A T E .

5.7

CHEAP ENGLISH PAPER WAREHOUSE.

ROBT. WEIR & CO.,

P A P E R M A K E R S , W H O L E S A L E S T A T I O N E R S

P R I N T E R S A N D B O O K B I N D E R S ,

Manufacturers of

ACCOUNT BOOKS, ENVELOPES, AND STATIONERY,

39 & 41 Great St. James Street, Montreal.

Importers of the best English Hand-made Papers; Bookbinders' Materials of all kinds.

A large Stock always kept on hand.

10.7

A. RAMSAY & SON,

IMPORTERS OF OILS, PAINTS, VARNISHES, BRUSHES, &c.,

Rolled, Rough and Polished Plate Glass, English & German Sheet Glass,

GLAZIERS' DIAMONDS, GOLD & SILVER LEAF BRONZES, &c.,

37, 39 & 41, Recollet Street, MONTREAL.

10.7

TOR.

arded by the
l opposite the
e Marie, the
ons. It has
ge part of the
he Prince of
of thanking
e past winter
date all who

modation of
it with their

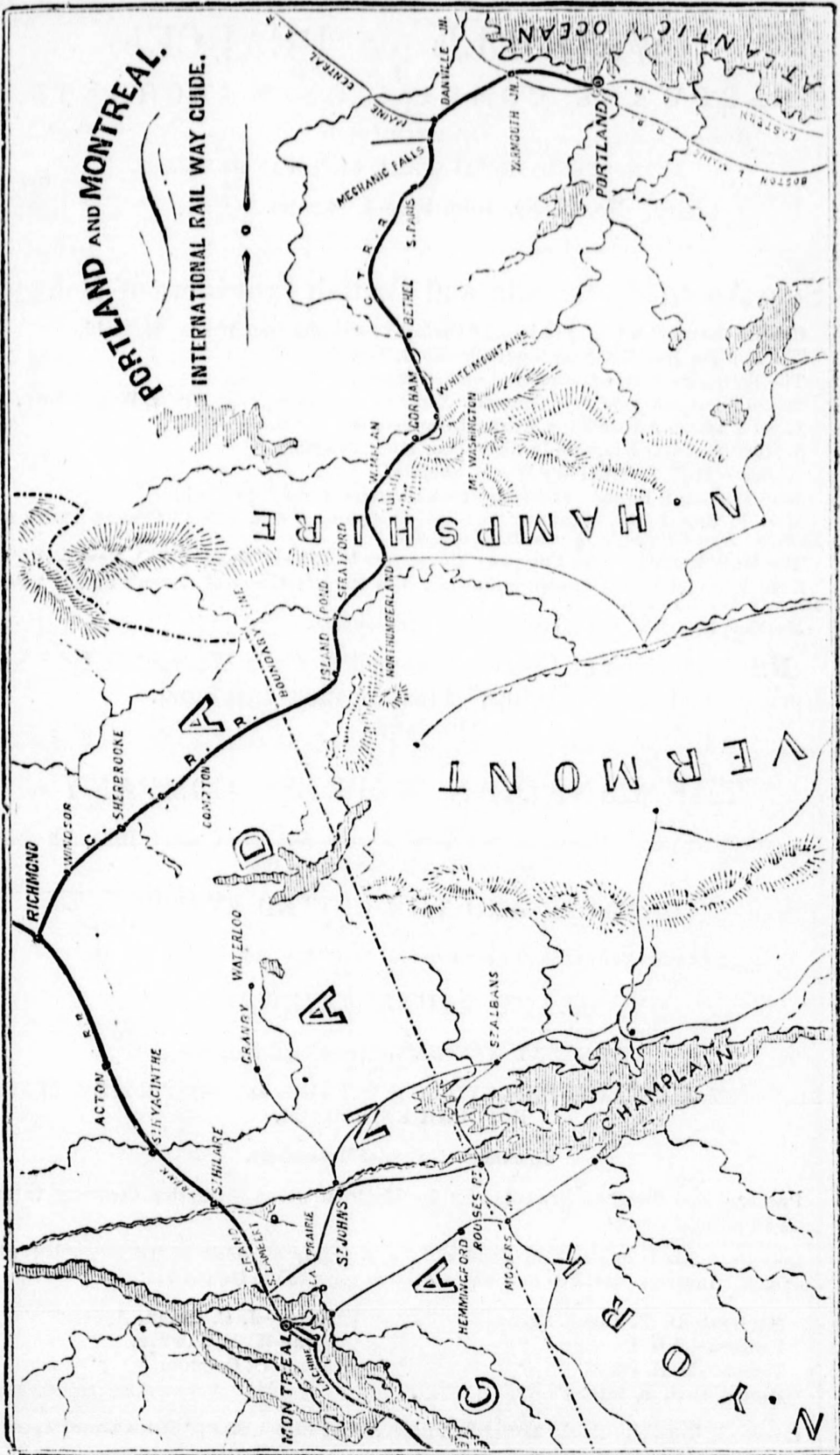
to any Hotel
guests than

c., &c.

NEERS

of all kinds.

c.,
eet Glass,
c.,



WADDELL & PEARCE,
HARDWARE COMMISSION MERCHANTS,
 AND IMPORTERS OF
IRON, STEEL, METALS, AND RAILWAY SUPPLIES,
No. 27 St. John Street, Montreal, C.E.

Sole Agents in Canada and British Provinces of N.A. for

Charles Cammell & Co., (Limited,) "Cyclops" Steel and Iron Works, Sheffield.
 The Bowling Iron Company (near) Bradford, Yorkshire.
 The Yorkshire Engine Company (Limited) Sheffield, Yorkshire.
 Patent Shaft and Axle Tree Company (Limited) Brunswick Iron Works, Wednesbury.
 Lloyd & Lloyd, Albion Tube Works, Birmingham.
 S. Moulton & Co., Kingston India Rubber Mills, Bradford.
 Walker & Hall, Electro Plate Works, Sheffield.
 John Trippett & Brother Shipping Agents, Liverpool and New York.
 Wm. F. Sim & Co., Pontpool Tin, and Pontypool "cold rolled" Canada Plates and Metals. Best Refined (\$ Crown) Bar Iron, &c.
 The Hart Manufacturing Company (Successors to Bliven, Mead & Co.), New York.
 Green's Patent Tube Company (Limited), Sole Manufacturers of Green's Patent "Solid Drawn" Brass Tubes.
 Hockley, Bolt, Nut, and Rivet Company, Birmingham.

N.B.—A stock of Charles Cammell & Co.'s Warranted Cast and Spring Steel and "Cyclops" Files constantly on hand.

5.7.P

THE CANADIAN EXPRESS COMPANY

Forward Merchandise, Money, and Packages of every description, collect Bills with Goods, Notes and Drafts, throughout the

CANADAS AND THE UNITED STATES,

Running daily (Sundays excepted) over the entire line of the

GRAND TRUNK RAILWAY,

THE GREAT WESTERN (Toronto and Hamilton),

PRESCOTT & OTTAWA, BROCKVILLE & OTTAWA, and PORT HOPE & PETERBOROUGH RAILROADS,

In charge of Special Messengers.

Packages and Freights forwarded by the Montreal Ocean Steamship Company to and from all parts of Europe,

Debenture Goods or Goods in Bond will be promptly attended to and forwarded with despatch. Invoices should be sent with all Goods going to the United States.

Montreal—D. T. IRISH, Agent.
 Portland—J. G. PRINDLE, "
 Toronto—M. H. IRISH, "
 Hamilton—J. D. IRWIN, "

Kingston—J. C. CLARK, Agent.
 Ottawa—W. H. SAWYER, "
 Quebec—W. C. SCOTT, "

Liverpool, England—No. 22 Tower Buildings, Water Street, ALEX. BLACKWOOD, Agent.

6.7.P

G. CHENEY, Supt.

ENTS,

.A. for

esbury.

Plates and

York.
ent ' Solid

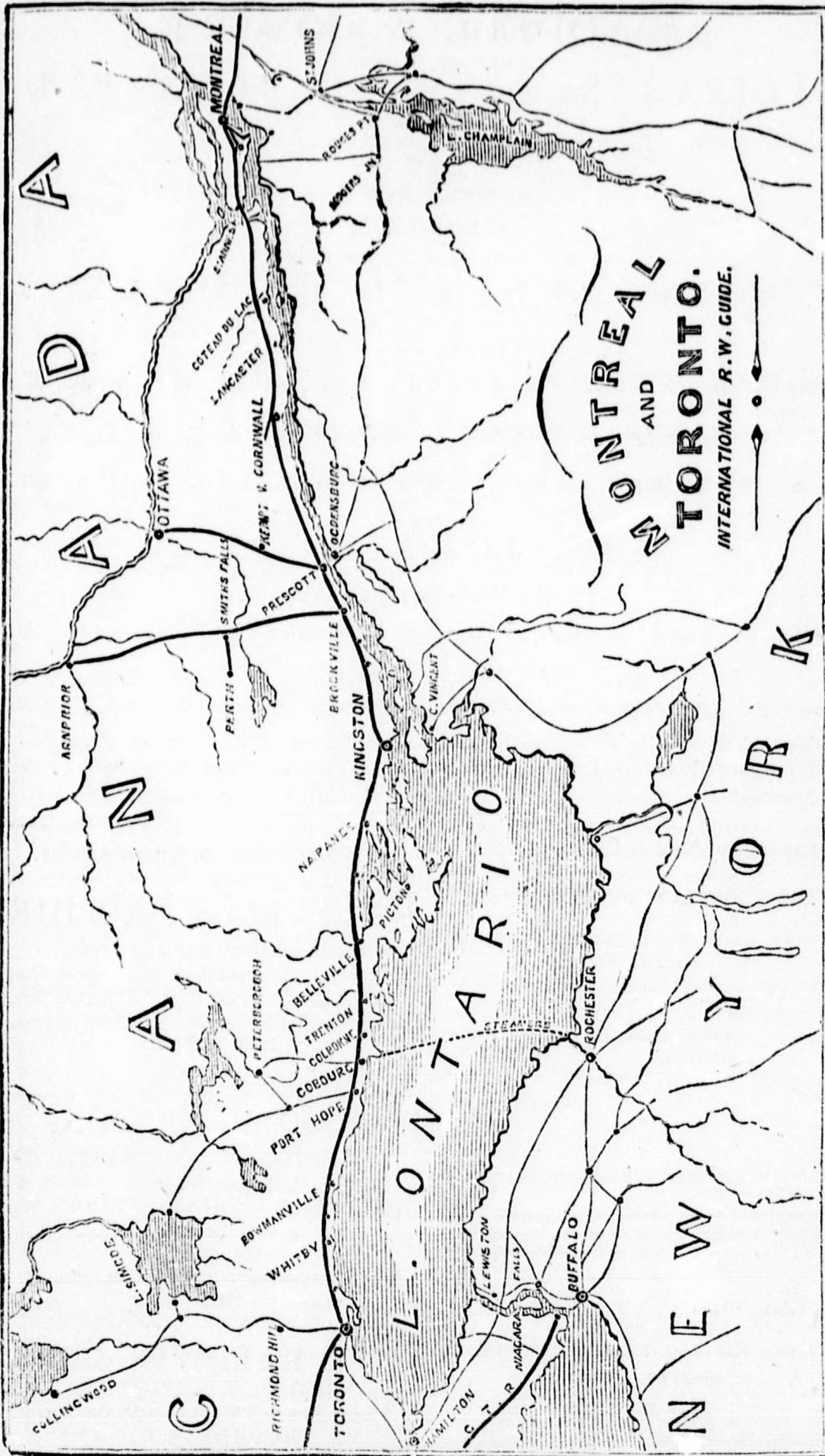
ast and

Y
with Goods,

PETER-

ay to and
rded with

, Agent.
Supt.



GRAND TRUNK RAILWAY.
STEAM COMMUNICATION TO
HALIFAX, N. S., AND ST. JOHN, N. B.

THE SPLENDID FIRST-CLASS STEAMER

1867



1867

"CARLOTTA"

WILL SAIL REGULARLY BETWEEN

PORTLAND AND HALIFAX

IN CONNECTION WITH

THE GRAND TRUNK RAILWAY,

LEAVING PORTLAND EVERY SATURDAY AT 4 P. M.,

AND

HALIFAX EVERY TUESDAY AT 4 P. M.

FARE BETWEEN PORTLAND AND HALIFAX, \$6.00 GOLD.

TO

ST. JOHN, N. B.

STEAMERS WILL LEAVE

Portland, calling at Eastport, on Mondays, Wednesdays & Fridays, at 4 P. M.

AND RETURN

From St. John, N.B., for Eastport and Portland, on Mondays, Wednesdays & Fridays, at 8 A.M.

Through Tickets issued, and Freight shipped on Through Bills of Lading, to and from the principal Stations on the Grand Trunk Railway, at lower rates than by any other Route.
Montreal, May 27th, 1867.

C. J. BRYDGES, *Managing Director.*

COMMISSION MERCHANTS.

KIRKWOOD, LIVINGSTONE & Co.,
PRODUCE, LEATHER AND GENERAL COMMISSION
MERCHANTS.

503 St. Paul Street, Montreal.

Consignments of :

Grain,

Flour,

Ashes.

Butter,

Pork,

Leather, &c., &c.,

Carefully and promptly realized and returns promptly made.

ADVANCES:—Cash advances made and Drafts authorized on all descriptions of Produce consigned for sale in this or Foreign Markets.

10.7

TUCKER DAVID,

COAL AND GENERAL COMMISSION MERCHANT,

78 MCGILL STREET,

MONNREAL.

Coals, Fire Brick, Fire Clay, &c., &c.

Curtiss' & Harvey's Gunpowder.

Leaf Tobacco, Bottles, &c.

COMMISSION MERCHANTS.

HELIWELL & MACPHIE

Commission Merchants and Brokers,
For the sale and purchase of Flour, Grain,
Provisions, Ashes, Salt, Fish & Fish Oils, &c.,
Office:—Corner St. Nicolas & St. Paul Streets,
MONTREAL.

6.7.P

CAMPBELL BRYSON,

COMMISSION MERCHANT,

And dealer in

HIDES, OIL, LEATHER, FINDINGS, &c.,
Nos. 9 & 11 Lemoine Street,

MONTREAL.

Liberal Advances made on Consignments.

9.7

C. H. BALDWIN & CO.,

COMMISSION MERCHANTS,

Importers and Wholesale Dealers in

WINES, GROCERIES, CIGARS, &c.,
18 Lemoine Street,

MONTREAL.

10.7

N. B.

X

P. M.,

GOLD.

4 P. M.

at 8 A.M.

and from
er Route.
irector.

NTS.

PHIE

okers,
r. Grain,
Oils, &c.,
l Streets,

ON,

T,

NGS, &c.,

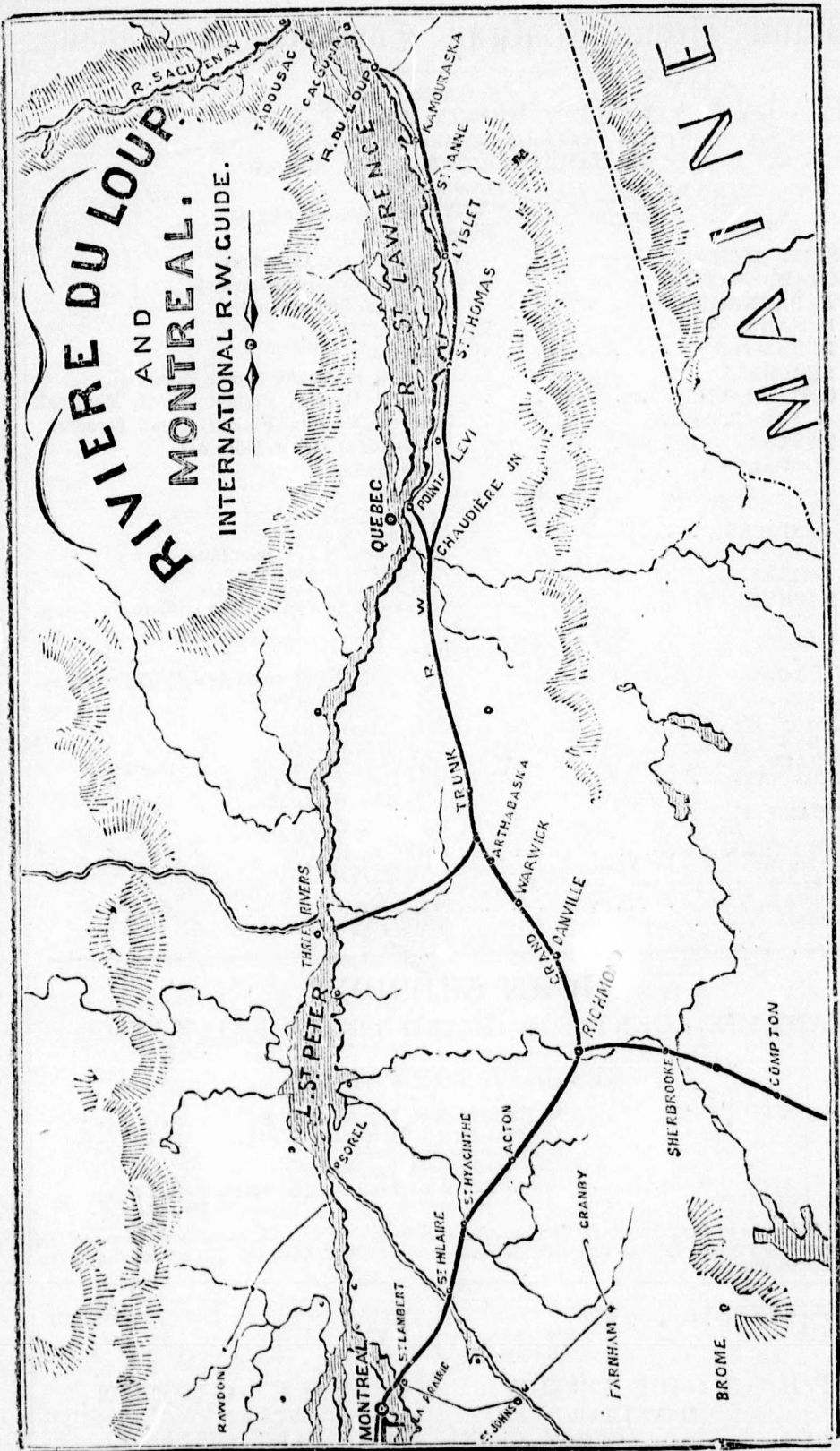
t,

gnments.

CO.,

RS,
rs in
RS, &c.,

10.7



Grand Trunk Railway Company of Canada.

PRESIDENT:

EDWARD W. WATKIN, Esq., M. P., London.

CHAIRMAN OF CANADIAN BOARD:

Hon. JAMES FERRIER, M.L.C., Montreal.

MANAGING DIRECTOR:

CHARLES JOHN BRYDGES, Esq., Montreal,

OFFICERS:

JOSEPH HICKSON, Secretary and Treasurer.
 RICHARD EATON, Locomotive Superintendent.
 J. F. BARNARD Engineer, East of Montreal.
 E. P. HANNAFORD " West " "
 T. B. HAWSON Auditor.
 H. SHACKELL General Passenger Agent, Montreal.
 F. C. STRATTON, General Eastern Freight Agent, Montreal.
 P. S. STEVENSON, General Western Freight Agent, Toronto.
 J. TAYLOR, Inspector of Stores, Montreal.
 H. W. WALKER, Book Keeper.

LOCAL SUPERINTENDENTS:

W. J. SPICER, { Montreal to Detroit.
 { Buffalo to Goderich.
 H. BAILEY, { Montreal to Province Line.
 { Montreal to Portland.
 A. S. MACBEAN, { Montreal to Rouse's Point.
 { Richmond to Quebec and Riviere du Loup.

AGENCIES:

NEW YORK E. P. BEACH, General Agent, 175 Broadway.
 BOSTON { S. SHACKELL,
 { C. SHUTTER
 BANGOR, ME WM. FLOWERS.
 OGDENSBURGH C. J. BALDWIN.
 BUFFALO GEORGE H. TRYON.
 CINCINNATI TAYLOR & BROTHER.
 CHICAGO { JAMES WALSH
 { J. H. WHITMAN.
 MILWAUKEE JOHN H. MUIR.
 ST. LOUIS JAMES SMITH.
 DETROIT E. REIDY.
 HALIFAX, N. S. BEN. WEIR.
 ST. JOHN, N. B. GEO. THOMAS.

JOHN SHEDDEN,
 CARTAGE AGENT FOR GRAND TRUNK RAILWAY CO.,
 AND
 GENERAL FORWARDER.

OFFICES: 88 McGill Street, Montreal, C. E.
 " 42 Front Street, Toronto, C. W.
 " King Street, Hamilton, "
 " Richmond Street, London "
 " Grand Trunk Railway Freight Office, Galt, C.W.
 " do do Detroit, U.S.

Shippers or Consignees of Merchandize will insure *Safety, Economy and Despatch* in transporting Freight by directing consignments "care of John Shedden" at any of the above mentioned places.

10.7

W. NOTMAN,
 PHOTOGRAPHER TO THE QUEEN,
 Bleury Street, MONTREAL.
 11.7.F

C
 MON
 F
 K
 M
 U
 V
 W
 X
 Y
 Z
 A
 B
 C
 D
 E
 F
 G
 H
 I
 J
 K
 L
 M
 N
 O
 P
 Q
 R
 S
 T
 U
 V
 W
 X
 Y
 Z
 A
 B
 C
 D
 E
 F
 G
 H
 I
 J
 K
 L
 M
 N
 O
 P
 Q
 R
 S
 T
 U
 V
 W
 X
 Y
 Z
 A
 B
 C
 D
 E
 F
 G
 H
 I
 J
 K
 L
 M
 N
 O
 P
 Q
 R
 S
 T
 U
 V
 W
 X
 Y
 Z
 A
 B
 C
 D
 E
 F
 G
 H
 I
 J
 K
 L
 M
 N
 O
 P
 Q
 R
 S
 T
 U
 V
 W
 X
 Y
 Z
 A
 B
 C
 D
 E
 F
 G
 H
 I
 J
 K
 L
 M
 N
 O
 P
 Q
 R
 S
 T
 U
 V
 W
 X
 Y
 Z
 A
 B
 C
 D
 E
 F
 G
 H
 I
 J
 K
 L
 M
 N
 O
 P
 Q
 R
 S
 T
 U
 V
 W
 X
 Y
 Z
 A
 B
 C
 D
 E
 F
 G
 H
 I
 J
 K
 L
 M
 N
 O
 P
 Q
 R
 S
 T
 U
 V
 W
 X
 Y
 Z
 A
 B
 C
 D
 E
 F
 G
 H
 I
 J
 K
 L
 M
 N
 O
 P
 Q
 R
 S
 T
 U
 V
 W
 X
 Y
 Z
 A
 B
 C
 D
 E
 F
 G
 H
 I
 J
 K
 L
 M
 N
 O
 P
 Q
 R
 S
 T
 U
 V
 W
 X
 Y
 Z
 A
 B
 C
 D
 E
 F
 G
 H
 I
 J
 K
 L
 M
 N
 O
 P
 Q
 R
 S
 T
 U
 V
 W
 X
 Y
 Z
 A
 B
 C
 D
 E
 F
 G
 H
 I
 J
 K
 L
 M
 N
 O
 P
 Q
 R
 S
 T
 U
 V
 W
 X
 Y
 Z
 A
 B
 C
 D
 E
 F
 G
 H
 I
 J
 K
 L
 M
 N
 O
 P
 Q
 R
 S
 T
 U
 V
 W
 X
 Y
 Z
 A
 B
 C
 D
 E
 F
 G
 H
 I
 J
 K
 L
 M
 N
 O
 P
 Q
 R
 S
 T
 U
 V
 W
 X
 Y
 Z
 A
 B
 C
 D
 E
 F
 G
 H
 I
 J
 K
 L
 M
 N
 O
 P
 Q
 R
 S
 T
 U
 V
 W
 X
 Y
 Z
 A
 B
 C
 D
 E
 F
 G
 H
 I
 J
 K
 L
 M
 N
 O
 P
 Q
 R
 S
 T
 U
 V
 W
 X
 Y
 Z
 A
 B
 C
 D
 E
 F
 G
 H
 I
 J
 K
 L
 M
 N
 O
 P
 Q
 R
 S
 T
 U
 V
 W
 X
 Y
 Z
 A
 B
 C
 D
 E
 F
 G
 H
 I
 J
 K
 L
 M
 N
 O
 P
 Q
 R
 S
 T
 U
 V
 W
 X
 Y
 Z
 A
 B
 C
 D
 E
 F
 G
 H
 I
 J
 K
 L
 M
 N
 O
 P
 Q
 R
 S
 T
 U
 V
 W
 X
 Y
 Z
 A
 B
 C
 D
 E
 F
 G
 H
 I
 J
 K
 L
 M
 N
 O
 P
 Q
 R
 S
 T
 U
 V
 W
 X
 Y
 Z
 A
 B
 C
 D
 E
 F
 G
 H
 I
 J
 K
 L
 M
 N
 O
 P
 Q
 R
 S
 T
 U
 V
 W
 X
 Y
 Z
 A
 B
 C
 D
 E
 F
 G
 H
 I
 J
 K
 L
 M
 N
 O
 P
 Q
 R
 S
 T
 U
 V
 W
 X
 Y
 Z
 A
 B
 C
 D
 E
 F
 G
 H
 I
 J
 K
 L
 M
 N
 O
 P
 Q
 R
 S
 T
 U
 V
 W
 X
 Y
 Z
 A
 B
 C
 D
 E
 F
 G
 H
 I
 J
 K
 L
 M
 N
 O
 P
 Q
 R
 S
 T
 U
 V
 W
 X
 Y
 Z
 A
 B
 C
 D
 E
 F
 G
 H
 I
 J
 K
 L
 M
 N
 O
 P
 Q
 R
 S
 T
 U
 V
 W
 X
 Y
 Z
 A
 B
 C
 D
 E
 F
 G
 H
 I
 J
 K
 L
 M
 N
 O
 P
 Q
 R
 S
 T
 U
 V
 W
 X
 Y
 Z
 A
 B
 C
 D
 E
 F
 G
 H
 I
 J
 K
 L
 M
 N
 O
 P
 Q
 R
 S
 T
 U
 V
 W
 X
 Y
 Z
 A
 B
 C
 D
 E
 F
 G
 H
 I
 J
 K
 L
 M
 N
 O
 P
 Q
 R
 S
 T
 U
 V
 W
 X
 Y
 Z
 A
 B
 C
 D
 E
 F
 G
 H
 I
 J
 K
 L
 M
 N
 O
 P
 Q
 R
 S
 T
 U
 V
 W
 X
 Y
 Z
 A
 B
 C
 D
 E
 F
 G
 H
 I
 J
 K
 L
 M
 N
 O
 P
 Q
 R
 S
 T
 U
 V
 W
 X
 Y
 Z
 A
 B
 C
 D
 E
 F
 G
 H
 I
 J
 K
 L
 M
 N
 O
 P
 Q
 R
 S
 T
 U
 V
 W
 X
 Y
 Z
 A
 B
 C
 D
 E
 F
 G
 H
 I
 J
 K
 L
 M
 N
 O
 P
 Q
 R
 S
 T
 U
 V
 W
 X
 Y
 Z
 A
 B
 C
 D
 E
 F
 G
 H
 I
 J
 K
 L
 M
 N
 O
 P
 Q
 R
 S
 T
 U
 V
 W
 X
 Y
 Z
 A
 B
 C
 D
 E
 F
 G
 H
 I
 J
 K
 L
 M
 N
 O
 P
 Q
 R
 S
 T
 U
 V
 W
 X
 Y
 Z
 A
 B
 C
 D
 E
 F
 G
 H
 I
 J
 K
 L
 M
 N
 O
 P
 Q
 R
 S
 T
 U
 V
 W
 X
 Y
 Z
 A
 B
 C
 D
 E
 F
 G
 H
 I
 J
 K
 L
 M
 N
 O
 P
 Q
 R
 S
 T
 U
 V
 W
 X
 Y
 Z
 A
 B
 C
 D
 E
 F
 G
 H
 I
 J
 K
 L
 M
 N
 O
 P
 Q
 R
 S
 T
 U
 V
 W
 X
 Y
 Z
 A
 B
 C
 D
 E
 F
 G
 H
 I
 J
 K
 L
 M
 N
 O
 P
 Q
 R
 S
 T
 U
 V
 W
 X
 Y
 Z
 A
 B
 C
 D
 E
 F
 G
 H
 I
 J
 K
 L
 M
 N
 O
 P
 Q
 R
 S
 T
 U
 V
 W
 X
 Y
 Z
 A
 B
 C
 D
 E
 F
 G
 H
 I
 J
 K
 L
 M
 N
 O
 P
 Q
 R
 S
 T
 U
 V
 W
 X
 Y
 Z
 A
 B
 C
 D
 E
 F
 G
 H
 I
 J
 K
 L
 M
 N
 O
 P
 Q
 R
 S
 T
 U
 V
 W
 X
 Y
 Z
 A
 B
 C
 D
 E
 F
 G
 H
 I
 J
 K
 L
 M
 N
 O
 P
 Q
 R
 S
 T
 U
 V
 W
 X
 Y
 Z
 A
 B
 C
 D
 E
 F
 G
 H
 I
 J
 K
 L
 M
 N
 O
 P
 Q
 R
 S
 T
 U
 V
 W
 X
 Y
 Z
 A
 B
 C
 D
 E
 F
 G
 H
 I
 J
 K
 L
 M
 N
 O
 P
 Q
 R
 S
 T
 U
 V
 W
 X
 Y
 Z
 A
 B
 C
 D
 E
 F
 G
 H
 I
 J
 K
 L
 M
 N
 O
 P
 Q
 R
 S
 T
 U
 V
 W
 X
 Y
 Z
 A
 B
 C
 D
 E
 F
 G
 H
 I
 J
 K
 L
 M
 N
 O
 P
 Q
 R
 S
 T
 U
 V
 W
 X
 Y
 Z
 A
 B
 C
 D
 E
 F
 G
 H
 I
 J
 K
 L
 M
 N
 O
 P
 Q
 R
 S
 T
 U
 V
 W
 X
 Y
 Z
 A
 B
 C
 D
 E
 F
 G
 H
 I
 J
 K
 L
 M
 N
 O
 P
 Q
 R
 S
 T
 U
 V
 W
 X
 Y
 Z
 A
 B
 C
 D
 E
 F
 G
 H
 I
 J
 K
 L
 M
 N
 O
 P
 Q
 R
 S
 T
 U
 V
 W
 X
 Y
 Z
 A
 B
 C
 D
 E
 F
 G
 H
 I
 J
 K
 L
 M
 N
 O
 P
 Q
 R
 S
 T
 U
 V
 W
 X
 Y
 Z
 A
 B
 C
 D
 E
 F
 G
 H
 I
 J
 K
 L
 M
 N
 O
 P
 Q
 R
 S
 T
 U
 V
 W
 X
 Y
 Z
 A
 B
 C
 D
 E
 F
 G
 H
 I
 J
 K
 L
 M
 N
 O
 P
 Q
 R
 S
 T
 U
 V
 W
 X
 Y
 Z
 A
 B
 C
 D
 E
 F
 G
 H
 I
 J
 K
 L
 M
 N
 O
 P
 Q
 R
 S
 T
 U
 V
 W
 X
 Y
 Z
 A
 B
 C
 D
 E
 F
 G
 H
 I
 J
 K
 L
 M
 N
 O
 P
 Q
 R
 S
 T
 U
 V
 W
 X
 Y
 Z
 A
 B
 C
 D
 E
 F
 G
 H
 I
 J
 K
 L
 M
 N
 O
 P
 Q
 R
 S
 T
 U
 V
 W
 X
 Y
 Z
 A
 B
 C
 D
 E
 F
 G
 H
 I
 J
 K
 L
 M
 N
 O
 P
 Q
 R
 S
 T
 U
 V
 W
 X
 Y
 Z
 A
 B
 C
 D
 E
 F
 G
 H
 I
 J
 K
 L
 M
 N
 O
 P
 Q
 R
 S
 T
 U
 V
 W
 X
 Y
 Z
 A
 B
 C
 D
 E
 F
 G
 H
 I
 J
 K
 L
 M
 N
 O
 P
 Q
 R
 S
 T
 U
 V
 W
 X
 Y
 Z
 A
 B
 C
 D
 E
 F
 G
 H
 I
 J
 K
 L
 M
 N
 O
 P
 Q
 R
 S
 T
 U
 V
 W
 X
 Y
 Z
 A
 B
 C
 D
 E
 F
 G
 H
 I
 J
 K
 L
 M
 N
 O
 P
 Q
 R
 S
 T
 U
 V
 W
 X
 Y
 Z
 A
 B
 C
 D
 E
 F
 G
 H
 I
 J
 K
 L
 M
 N
 O
 P
 Q
 R
 S
 T
 U
 V
 W
 X
 Y
 Z
 A
 B
 C
 D
 E
 F
 G
 H
 I
 J
 K
 L
 M
 N
 O
 P
 Q
 R
 S
 T
 U
 V
 W
 X
 Y
 Z
 A
 B
 C
 D
 E
 F
 G
 H
 I
 J
 K
 L
 M
 N
 O
 P
 Q
 R
 S
 T
 U
 V
 W
 X
 Y
 Z
 A
 B
 C
 D
 E
 F
 G
 H
 I
 J
 K
 L
 M
 N
 O
 P
 Q
 R
 S
 T
 U
 V
 W
 X
 Y
 Z
 A
 B
 C
 D
 E
 F
 G
 H
 I
 J
 K
 L
 M
 N
 O
 P
 Q
 R
 S
 T
 U
 V
 W
 X
 Y
 Z
 A
 B
 C
 D
 E
 F
 G
 H
 I
 J
 K
 L
 M
 N
 O
 P
 Q
 R
 S
 T
 U
 V
 W
 X
 Y
 Z
 A
 B
 C
 D
 E
 F
 G
 H
 I
 J
 K
 L
 M
 N
 O
 P
 Q
 R
 S
 T
 U
 V
 W
 X
 Y
 Z
 A
 B
 C
 D
 E
 F
 G
 H
 I
 J
 K
 L
 M
 N
 O
 P
 Q
 R
 S
 T
 U
 V
 W
 X
 Y
 Z
 A
 B
 C
 D
 E
 F
 G
 H
 I
 J
 K
 L
 M
 N
 O
 P
 Q
 R
 S
 T
 U
 V
 W
 X
 Y
 Z
 A
 B
 C
 D
 E
 F
 G
 H
 I
 J
 K
 L
 M
 N
 O
 P
 Q
 R
 S
 T
 U
 V
 W
 X
 Y
 Z
 A
 B
 C
 D
 E
 F
 G
 H
 I
 J
 K
 L
 M
 N
 O
 P
 Q
 R
 S
 T
 U
 V
 W
 X
 Y
 Z
 A
 B
 C
 D
 E
 F
 G
 H
 I
 J
 K
 L
 M
 N
 O
 P
 Q
 R
 S
 T
 U
 V
 W
 X
 Y
 Z
 A
 B
 C
 D
 E
 F
 G
 H
 I
 J
 K
 L
 M
 N
 O
 P
 Q
 R
 S
 T
 U
 V
 W
 X
 Y
 Z
 A
 B
 C
 D
 E
 F
 G
 H
 I
 J
 K
 L
 M
 N
 O
 P
 Q
 R
 S
 T
 U
 V
 W
 X
 Y
 Z
 A
 B
 C
 D
 E
 F
 G
 H
 I
 J
 K
 L
 M
 N
 O
 P
 Q
 R
 S
 T
 U
 V
 W
 X
 Y
 Z
 A
 B
 C
 D
 E
 F
 G
 H
 I
 J
 K
 L
 M
 N
 O
 P
 Q
 R
 S
 T
 U
 V
 W
 X
 Y
 Z
 A
 B
 C
 D
 E
 F
 G
 H
 I
 J
 K
 L
 M
 N
 O
 P
 Q
 R
 S
 T
 U
 V
 W
 X
 Y
 Z
 A
 B
 C
 D
 E
 F
 G
 H
 I
 J
 K
 L
 M
 N
 O
 P
 Q
 R
 S
 T
 U
 V
 W
 X
 Y
 Z
 A
 B
 C
 D
 E
 F
 G
 H
 I
 J
 K
 L
 M
 N
 O
 P
 Q
 R
 S
 T
 U
 V
 W
 X
 Y
 Z
 A
 B
 C
 D
 E
 F
 G
 H
 I
 J
 K
 L
 M
 N
 O
 P
 Q
 R
 S
 T
 U
 V
 W
 X
 Y
 Z
 A
 B
 C
 D
 E
 F
 G
 H
 I
 J
 K
 L
 M
 N
 O
 P
 Q
 R
 S
 T
 U
 V
 W
 X
 Y
 Z
 A
 B
 C
 D
 E
 F
 G
 H
 I
 J
 K
 L
 M
 N
 O
 P
 Q
 R
 S
 T
 U
 V
 W
 X
 Y
 Z
 A
 B
 C
 D
 E
 F
 G
 H
 I
 J
 K
 L
 M
 N
 O
 P
 Q
 R
 S
 T
 U
 V
 W
 X
 Y
 Z
 A
 B

Canada.

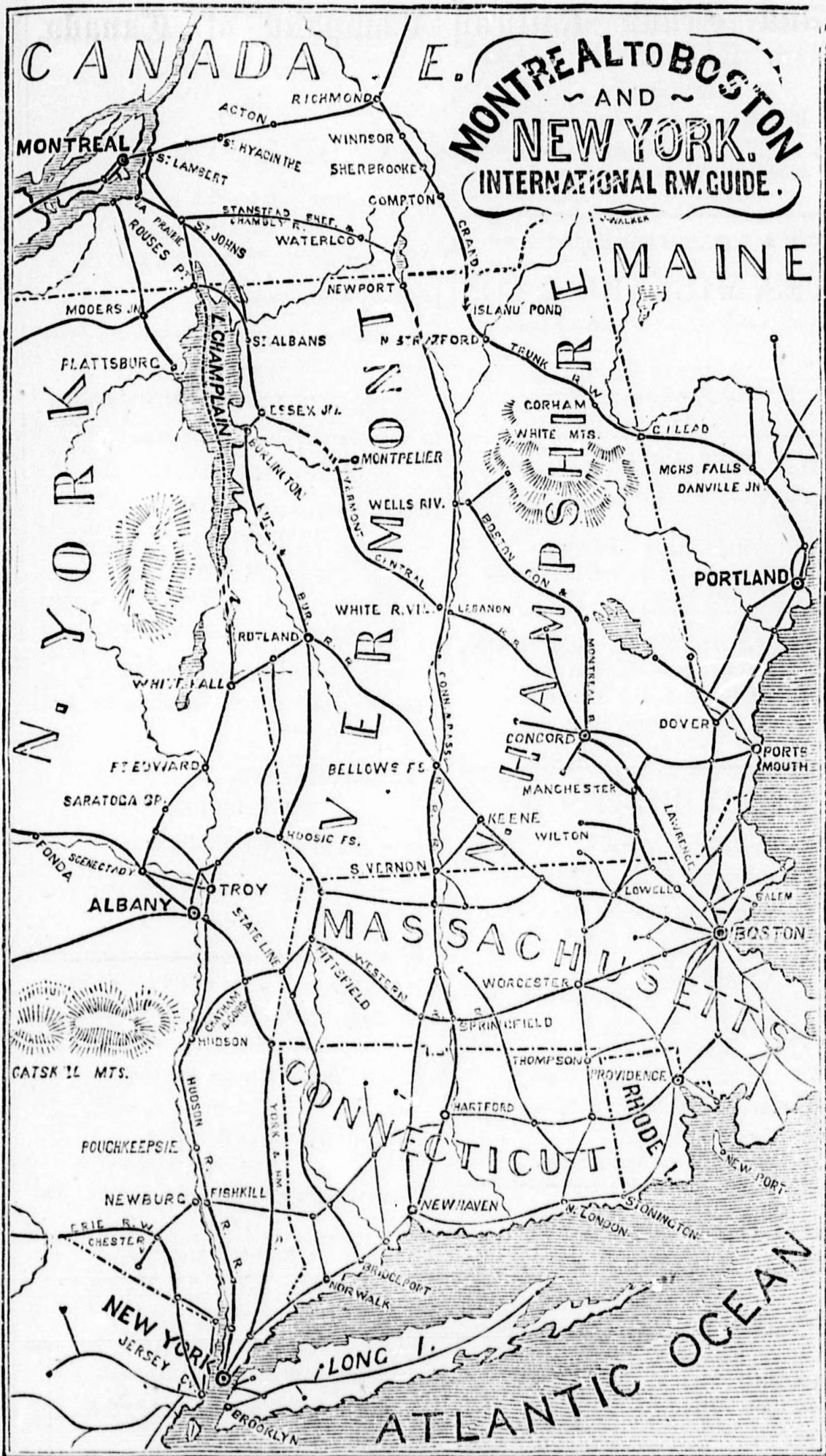
Montreal.
Onto.

Loop.

adway.

0.,

ch in
above



BOOKSELLER, &c.

THOS. RIDDELL & CO.,

Importers of
British and Foreign Stationery,
Wholesale and Retail,
54 & 56 Great St. James Street,
10.7 Montreal.

SHOE & LEATHER DEALERS.**AMES, MILLARD & CO.,**

Manufacturers of and Wholesale Dealers
in
Boots and Shoes,
No. 15 Saint Peter Street, Montreal.
10.7

WM. McLAREN & CO.,

Manufacturers of and Wholesale Dealers
in
BOOTS AND SHOES.
15 and 17 Lemoine Street, Montreal.
8-7.P.

HUNTER, DUFFY & JOHNSON,

Wholesale Manufacturers of
BOOTS AND SHOES,
20 St. Helen Street, Montreal.
8-7.P.

JAMES ROBERTSON,

CANADA LEAD & SAW WORKS,
126 to 132 QUEEN STREET, MONTREAL.

Importer of all kinds of Metals.
And Manufacturer of
Lead Pipe, Lead Shot, White Lead, Putty,
Circular, Cross Cut, Mill, Gang,
And other descriptions of Saws. Saws
Repaired at lowest rates.
Price Lists on Application.

EAGLE FOUNDRY,
KING AND QUEEN STREETS,
MONTREAL.

GEORGE BRUSH, Proprietor.
Manufacture most improved
STEAM ENGINES,
STEAM BOILERS, MINING.
AND OTHER MACHINERY.
Plans furnished if desired.

WATCHES, JEWELLERY, &c.

Established 1818.

SAVAGE & LYMAN

Have constantly on hand a large and well-
selected Stock of

GOLD AND SILVER WATCHES,

Jewellery of all kinds,

English, French, and American Clocks.

BEST ELECTRO-PLATED WARE,

In all its varieties of manufacture ;

Bronze and Parian Ware.

Table Cutlery,

Penknives,

Scissors,

Razors,

Dressing Cases in Leather and Wood,

Bronze Urns and Kettles.

Electro-plated Spoons, Forks, Ladles, &c.

**THERMOMETERS, BAROMETERS,
MICROSCOPES,**

Telescopes, Opera dan Field Glasses,

Spectacles, Eye Glasses, &c.

S. & L. are constantly manufacturing
SILVER TEA AND COFFEE SETS,
Jugs, Cups, Salvers, Trays, Inkstands, Forks,
Spoons, Ladles, Napkin Rings,
Butter Knives, &c., &c.

Glass Gas Gasaliers.

Regulation Swords, Belts, Sashes, &c., &c.

RIFLES,

Of various celebrated Makers.

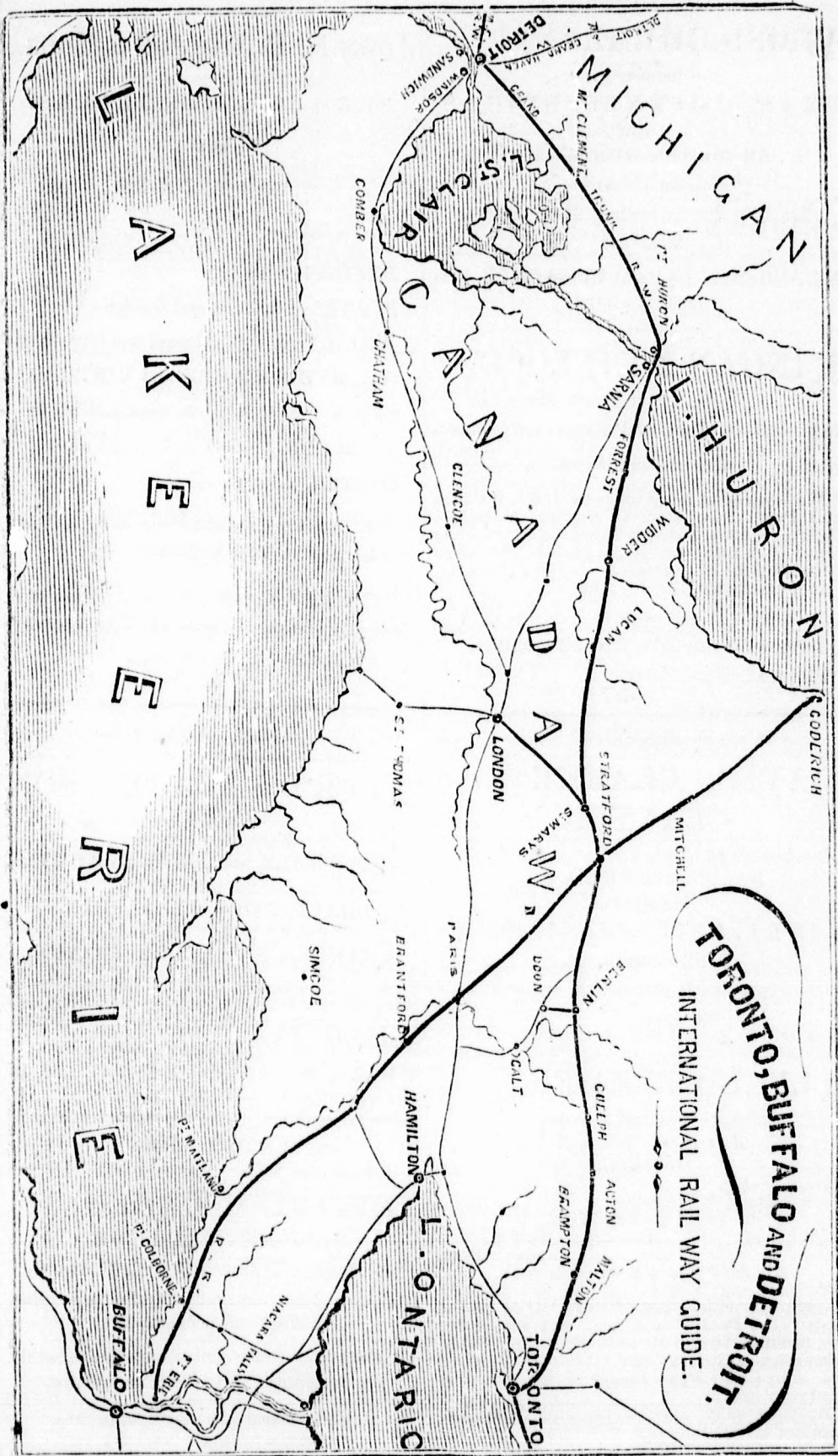
S. & L. respectfully invite Travellers and
Strangers to visit their establishment,

CATHEDRAL BLOCK,

Notre Dame Street,

10.7

Montreal.



TORONTO, BUFFALO AND DETROIT.
INTERNATIONAL RAIL WAY GUIDE.

, &c.
 and well-
 ES,
 Clocks.
 RE,
 od,
 es, &c.
 ERS,
 &c.
 turing
 TS,
 s, Forks,
 s,
 re., &c.
 s.
 ers and
 K,
 eal.

GROCERS.**WM. D. McLAREN,**

Dealer in
TEAS, COFFEES, SPICES
AND

All the best descriptions of
Family Groceries,

No. 153 St. Lawrence Main Street,
Montreal.

N.B.—Genuine Portland Kerosene Oil constantly on hand.

KINGAN & KINLOCH,

St. Peter Street, Montreal,
Importers of Teas and General Groceries,
Liquors and Wines.

We keep constantly on hand Refined, Cuba, and Porto Rico Sugars; Syrups, Molasses, Coffees, Spices, Raisins, Currants, Nuts, Vinegar, Oils, Candles, Soaps, Starch, Blacking, Drysalteries, Dye-Stuffs, Pickles, Brooms, Pails, Cordage, Fish, &c., &c.

AND
Tobaccos, various brands and qualities.
Pipes, plain and fancy.
10.7

WINE MERCHANTS.**DAVIE, CLARKE AND CLAYTON,**

Successors to
BACON, CLARKE & CO.,
Importers of
WINES, SPIRITS, CIGARS, &c.,
46 St. Peter Street,
Opposite St. Sacrament Street,
Montreal.
4.7

ALFRED RIMMER,

(Under Waddell & Pearce.)
27 JOHN STREET,
MONTREAL.
Seltzer Water,
Rhenish Wines,
Light French Wines,
Pemartin's Sherry,
Sandeman's Port,
All from the places of growth.
To each bottle of Claret add one of Soda Water, one wine-glass of Curacao or two of Sherry, the Peel of a Lemon cut very thin, and powdered sugar according to taste. Put in two sprigs of Burrage, and let the whole stand one hour; add some lumps of ice, and it is ready for use.

Burrage may always be had from Mr. Rimmer on application.
9.7

BREWERS.**JOHN H. R. MOLSON & BROS.,**

BREWERS, DISTILLERS,
AND
SUGAR REFINERS,

Have for Sale:—

REFINED SUGARS
SYRUPS—Standard and Golden
WHISKY—50 o. p., Alcohol and Pure Spirit
OLD RYE WHISKEY and VINEGAR
INDIA PALE ALE, in wood and bottle
MILD ALE, do do
PORTER, do do

Families regularly supplied at their residences with Ales and Porter.

OFFICES:—Corner of Bonaventure and Cemetery Streets (opposite the R. R. Station), and 222 and 286 St. Mary Street.
10.7

OILS, SOAPS.**ALFR'D SAVAGE & SON**

MONTREAL,
Manufacturers of
LARD, WHALE, and MACHINERY OILS,
Importers of
OLIVE, COD, and SEAL OILS.

TRINDER'S TOILET SOAPS,

1 ton each.—Honey, Brown Windsor, Glycerine, Elder, Rose, Glycerine and Almond, in tablets, put up in quarter-Gross Boxes, constantly on hand.

ALSO,
WHALE OIL SOAP for Fullers' use, in barrels. 7.7.P

SADDLERY.**JOHN C. McLAREN,**

SADDLERY EMPORIUM,
149 Great St. James Street, Montreal.
Importer of London made Saddlery, Bridles, Bits, Whips, Spurs, &c.
All goods in the line kept and supplied monthly per Canadian Royal Mail Steamships.

Orders executed with promptness.
10.7

HARDWARE.

R. MACKENZIE,

Importer of all kinds of

METALS

and

HEAVY HARDWARE

And Sole Agent for

STAR BABBITT METAL,

356 St. Paul Street,

MONTREAL.

LAMPS, &c.

E. CHANTELOUP,

MANUFACTURER OF

LAMPS, GAS FIXTURES, GASALIERS,

LUSTRES, BRACKETS,

HALL LAMPS AND TRIMMINGS FOR PLUMBERS

WHOLESALE & RETAIL,

587 Craig Street,

MONTREAL.

HARDWARE, &c.

IVES & ALLEN,

MONTREAL,

MANUFACTURERS OF

HARDWARE, STOVES,

IRON RAILING, &c.,

KILN PLATES,

AND

CASTINGS FOR BREWERIES.

PRINTING HOUSE.

THE MONTREAL

PRINTING & PUBLISHING CO

PRINTING DEPARTMENT.

(Late M. Longmoore & Co.)

Every kind of work done, in the very best manner, promptly, and at reasonable rates.

Orders from the country filled without delay, and forwarded by mail or express.

BOOKS, PAMPHLETS, CATALOGUES, &c., neatly and expeditiously printed.

LEGAL, MUNICIPAL, and ASSESSMENT FORMS printed to order.

Special attention given to RAILROAD and STEAMBOAT Printing.

COUPON TICKETS printed on one of Sandford, Harroun & Co.'s Presses—the only one of the kind in Canada.

Orders for Printing to be addressed to the **MANAGER OF THE PRINTING DEPARTMENT, MONTREAL PRINTING & PUBLISHING Co.**

H I N T S

TO

R A I L W A Y T R A V E L L E R S .

You will save money by purchasing your Tickets before entering the cars.

CHECK YOUR BAGGAGE and the Company will then be responsible for it. Baggage in Passenger Cars is a source of anxiety to the owner: causes inconvenience to others; and is unsightly and altogether out of place.

Baggage can be checked *through* from places in Canada to the United States and *vice versa*; but in such cases the law requires each Passenger to point out his Baggage to the Customs' Officer at the Frontier Station, in order that it may be examined.

The following is a list of Custom House Stations:—

	<i>American.</i>	<i>Canadian.</i>
Between PORTLAND and MONTREAL.....	ISLAND POND...	COATICOOKE
“ NEW YORK or BOSTON and MONTREAL.....	ROUSE'S POINT & ST. ALBANS.....	ROUSE'S POINT & ST. ARMAND
“ MONTREAL and PLATTSBURGH.	MOOR'S JUNC.....	HEMMINGFORD
“ UNITED STATES and CANADA <i>via</i> OGDENSBURGH	OGDENSBURGH...	PRESCOTT
“ NEW YORK or BUFFALO and DETROIT or CHICAGO.....	BUFFALO.....	FORT ERIE
“ TORONTO and DETROIT.....	PORT HURON.....	SARNIA
	PORT HURON.....	SARNIA

Avoid altercations with Conductors or other Employés of the Company. If you have a grievance make it known by letter to the Managing Director at Montreal and you will obtain redress. Conductors have very responsible and arduous duties to perform on the journey, which require the utmost diligence on their part, and they have not time to enter into long discussions.

IT IS DANGEROUS to stand on the platform of cars or move from one car to another, or attempt to get on or off whilst the Train is in motion. Heads and arms are safest when they are *inside* the car windows.

BROS.,
ERS,

Pure Spirit
VEGAR
d bottle
do
do
at their

ture and
Station),

SON

Y OILS,

LS.

APS,
Glyce-
Almond,
Boxes,

use, in
P

treal.
Bridles,

nonthly
ips.

s.

MONTREAL TO PORTLAND.

Via Grand Trunk Railway.

[Sept. 16th.]

[Sept. 16th.]

Local
Trains.

5.45 P. M.

6.10 "

6.45 "

7.00 "

7.10 "

7.25 "

7.45 P. M.

8.02 P. M.

8.15 "

8.35 "

9.00 P. M.

9.00 A. M.

9.30 "

9.45 "

10.15 "

10.38 "

10.48 "

10.55 "

11.15 "

11.35 "

11.50 "

12.00 "

12.25 "

12.40 "

12.55 "

1.00 "

1.15 "

1.30 "

1.45 "

2.00 P. M.

2.15 "

2.30 "

2.45 "

3.00 "

3.15 "

3.30 P. M.

C. E.

TOTAL MILES.	STATIONS.	Express.	Local.	Local.	
	MONTREAL	Depart	10.10 P. M.	2.00 P. M.	7.00 A. M.
7	St. Lambert.....	10.45 "	2.23 "	7.50 "	
10	St. Hubert.....		2.32 "	8.05 "	
15	Bou. Mountain.....	*11.10 "	2.45 "	8.25 "	
21	Belœil.....		2.57 "	8.55 "	
22	St. Hilaire.....	11.35 "	3.05 "	9.05 "	
28	Soixante.....		3.25 "	9.35 "	
35	St Hyacinthe.....	12.10 A. M.	3.45 "	10.05 "	
42	Britannia Mills.....		4.05 "	10.35 "	
44	St. Liboire.....		4.15 "	10.50 "	
48	Upton.....		4.25 "	11.05 "	
54	Acton.....	1.00 "	4.48 "	11.45 "	
62	Old Durham.....		5.13 "	12.25 P. M.	
66	New Durham.....		5.25 "	12.45 "	
76	RICHMOND.....	Arrive	2.00 "	5.50 "	1.25 "
		Depart	2.15 "	6.05 "	1.45 "
86	Windsor.....		6.35 "	2.35 "	
94	Brompton Falls.....		7.00 "	3.15 "	
101	Sherbrooke.....	Arrive		7.20 "	3.45 "
		Depart	3.20 "		4.00 "
104	Lennoxville.....			7.30 "	4.20 "
111	Waterville.....			7.50 "	4.50 "
114	Compton.....			8.00 "	5.05 "
122	Coaticooke.....	Arrive			5.45 "
		Depart	4.20 "		6.10 "
131	Boundary Line.....	*4.50 "		9.00 "	7.00 "
137	Norton.....			9.15 "	7.30 "
148	ISLAND POND.....	Arrive	5.30 "	9.45 P. M.	8.20 P. M.
		Depart	6.30 "		
156	Wenlock.....		6.50 "		
163	North Stratford.....		7.15 "		
167	Stratford.....		7.28 "		
171	Stratford Hollow.....		7.40 "		
175	Northumberland.....		7.50 "		
181	Stark.....		8.10 "		
188	West Milan.....		8.30 "		
194	Milan.....		8.50 "		
200	Berlin Falls.....		9.05 "		
206	Gorham.....	Arrive	9.30 "		
		Depart			
212	Shelburne.....		9.50 "		
217	Gilead.....		10.05 "		
223	West Bethel.....		10.20 "		
227	Bethel.....		10.35 "		
232	Locke's Mills.....		10.45 "		
236	Bryant's Pond.....		11.00 "		
242	West Paris.....		11.15 "		
249	South Paris.....		11.40 "		
256	Oxford.....		12.00 "	5.45 A. M.	3.30 P. M.
261	Mechanic Falls.....		12.15 "	6.05 "	4.05 "
265	Empire Road.....		12.30 P. M.	6.18 "	4.30 "
				6.31 A. M.	4.50 P. M.
138	BANGOR.....	Depart	7.30 A. M.		
270	Danville Junction.....		12.45 P. M.	6.47 A. M.	5.15 P. M.
275	New Gloucester.....		1.00 "	7.03 "	5.45 "
279	Pownal.....		1.15 "	7.15 "	6.05 "
282	North Yarmouth.....		1.25 "	7.25 "	6.18 "
285	Yarmouth Junction.....		1.35 "	7.35 "	6.32 "
286	Yarmouth.....		1.40 "	7.40 "	6.45 "
288	Cumberland.....				
292	Falmouth.....		2.00 "	7.55 "	7.18 "
297	PORTLAND.....	Arrive	2.15 P. M.	8.10 A. M.	7.45 P. M.

* Trains do not stop unless signalled.

C. J. Brydges, Managing Director Montreal, C. E.

MONTREAL TO TORONTO.

Via Grand Trunk Railway.

[June 2nd]

TOTAL MILES.	STATIONS.	Express.	Express.	Local Trains.	Local Trains.	TOT MILE
	MONTREAL Depart	9.30 A.M.	9.30 P.M.	7.00 A.M.	5.15 P.M.	
2	Tanneries Junction.....	9.40 "	9.40 "	7.10 "	5.25 "	1
14	Pointe Claire.....			7.55 "	6.00 "	1
21	St. Anne's.....			8.25 "	6.17 "	2
24	Vaudreuil.....	10.30 "	10.40 "	8.42 "	6.30 "	2
29	Cedars.....			9.18 "	6.45 "	2
34	River Rouge.....			9.30 "	7.05 "	2
37	Coteau Landing.....	11.00 "	11.15 "	9.50 "	7.15 "	2
43	Riv. Beaudette.....		11.55 "	10.10 "	7.35 "	3
53	Lancaster.....	11.40 "		10.50 "	8.15 "	4
67	CORNWALL } Arrive	12.15 P.M.	12.30 A.M.	11.50 "	8.55 P.M.	4
 Depart	12.30 "	12.40 "	12.00 P.M.		5
72	Moulinette.....					6
77	Dickinson's Landing.....	12.50 "	1.05 "	1.35 "		6
81	Farran's Point.....					7
83	Aultsville.....	1.05 "	*1.22 "	2.10 "		7
92	Williamsburg.....	1.27 "	1.47 "	3.00 "		8
99	Matilda.....	1.42 "	2.07 "	3.35 "		8
104	Edwardsburgh.....	1.55 "		4.05 "		9
112	PRESCOTT JUNCTION } Arr	2.10 "	2.45 "	4.45 "		10
 Dep	2.20 "		5.29 "		10
120	Maitland.....			6.00 "		11
125	Brockville.....	2.55 "	3.25 "	6.20 "		11
129	Lyn.....	*3.05 "		6.40 "		12
137	Mallorytown.....	3.27 "	4.00 "	7.20 "		12
146	Lansdowne.....	3.47 "	4.25 "	8.00 "		13
155	Gananoque.....	4.07 "	4.50 "	8.40 "		13
164	Ballantyne's.....					14
172	KINGSTON ... } Arrive	4.50 "	5.40 "	10.00 P.M.		169
 Depart	5.10 "	5.40 "	6.45 A.M.		178
187	Ernestown.....	*5.55 "	6.25 "	7.55 "		186
198	Napanee.....	6.25 "	6.55 "	8.50 "		195
206	Tyendinaga.....	6.47 "	7.20 "	9.28 "		203
213	Shannonville.....	7.05 "	7.33 "	10.00 "		207
220	Belleville.....	7.22 "	8.00 "	10.35 "		212
231	Trenton.....	7.50 "	8.30 "	11.35 "		221
241	Brighton.....	8.17 "	8.55 "	12.25 P.M.		228
248	Colborne.....	8.35 "	9.15 "	1.10 "		234
256	Grafton.....	*8.55 "	9.31 "	1.45 "		240
263	COBOURG } Arrive	9.15 "	9.55 "	2.30 "		249
 Depart	9.30 "	10.10 "			251
270	Port Hope.....	9.52 "	10.27 "	3.02 "		256
280	Newtonville.....		10.5 "	3.55 "		260
285	Newcastle.....	*10.31 "	11.15 "	4.27 "		265
290	Bowmanville.....	10.41 "	11.25 "	4.50 "		279
299	Oshawa.....	11.05 "	11.50 "	5.35 "		289
303	Port Whitby.....	11.15 "	12.04 P.M.	5.53 "		295
310	Duffin's Creek.....		12.20 "	6.22 "		298
312	Frenchman's Bay.....		12.26 "	6.33 "		304
316	Port Union.....	11.45 "	12.37 "	6.50 "		308
322	Scarboro'.....		12.50 "	7.17 "		312
331	Don.....		1.20 "	7.55 "		318
333	TORONTO Arrive	12.30 A.M.	1.30 P.M.	8.05 P.M.		331

* Flag Stations.

Refreshment Rooms at Cornwall, Prescott Junction, Kingston, Cobourg and Toronto.

C. J. Bydges, Managing Director, Montreal, C.E.

Re

TORONTO TO MONTREAL.

Via Grand Trunk Railway.

[June 2nd]

[June 3rd.]

Local Trains.	TOTAL MILES.	STATIONS.	Express.	Express.	Local Trains.	Local Trains.
5.15 P. M.		TORONTODepart	6.30 A. M.	6.00 P. M.	1.00 P. M.	
5.25 "	1	Don.....		6.05 "	1.20 "	
6.00 "	11	Scarboro'.....		6.36 "	2.05 "	
6.17 "	16	Port Union.....	7.17 "	6.55 "	2.35 "	
6.30 "	20	Frenchman's Bay.....		7.08 "	2.55 "	
6.45 "	23	Duffin's Creek.....	*7.35 "	7.15 "	3.07 "	
7.05 "	27	Port Whitby.....	7.54 "	7.32 "	3.40 "	
7.15 "	33	Oshawa.....	8.05 "	7.43 "	4.00 "	
7.35 "	43	Bowmanville.....	8.32 "	8.15 "	4.50 "	
8.15 "	47	Newcastle.....	8.45 "	8.30 "	5.10 "	
8.55 P. M.	53	Newtonville.....	9.00 "	8.47 "	5.42 "	
	63	Port Hope.....	9.25 "	9.15 "	6.37 "	
	69	COBOURG. { Arrive	9.50 "	9.30 "	7.15 "	
		{ Depart	10.05 "	9.45 "		
	77	Grafton.....	10.30 "	10.15 "	7.58 "	
	84	Colborne.....	10.50 "	10.37 "	8.35 "	
	92	Brighton.....	11.10 "	11.05 "	9.10 "	
	101	Trenton.....	11.35 "	11.35 "	10.05 "	
	112	Belleville.....	12.08 P. M.	12.15 A. M.	11.10 "	
	120	Shannonville.....	*12.28 "		11.50 A. M.	
	126	Tyendinaga.....	*12.45 "		12.30 "	
	134	Napanea.....	1.05 "	1.25 "	1.45 "	
	145	Ernestown.....	*1.35 "		2.45 "	
	160	KINGSTON... { Arrive	2.15 "	2.50 "	4.00 A. M.	
		{ Depart	2.35 "	2.55 "	6.15 A. M.	
	169	Ballantyne's.....			7.00 "	
	178	Gananoque.....	3.20 "	3.5 "	7.40 "	
	186	Lansdowne.....	3.47 "	4.25 "	8.25 "	
	195	Mallorytown.....	4.08 "	4.0 "	9.05 "	
	203	Lyn.....	4.30 "		9.40 "	
	207	Brockville.....	4.42 "	5.30 "	10.05 "	
	212	Maitland.....			10.23 "	
	221	Prescott Junction.....	5.20 "	6.05 "	11.00 "	
	228	Edwardsburgh.....	*5.40 "	6.25 "	11.33 "	
	234	Matilda.....	5.55 "	6.40 "	12.00 P. M.	
	240	Williamsburgh.....	6.15 "	7.00 "	12.30 "	
	249	Aultsville.....	*6.38 "	7.23 "	1.05 "	
	251	Farran's Point.....			1.10 "	
	256	Dickinson's Landing.....	6.56 "	7.42 "	1.35 "	
	260	Moulinette.....				
	265	CORNWALL. { Arrive	7.25 "	8.10 "		
		{ Depart	7.40 "	8.25 "	2.20 "	5.15 A. M.
	279	Lancaster.....	8.15 "	9.05 "	3.15 "	5.57 "
	289	River Beaudette.....		9.35 "	4.00 "	6.30 "
	295	Coteau Landing.....	8.50 "	9.50 "	4.23 "	6.45 "
	298	River Rouge.....			4.37 "	6.55 "
	304	Cedars.....			5.00 "	7.11 "
	308	Vaudreuil.....	9.20 "	10.30 "	5.20 "	7.30 "
	312	St. Anne's.....			5.35 "	7.37 "
	318	Pointe Claire.....	9.45 "		6.00 "	7.55 "
	331	Tanneries Junction.....	10.00 "	11.35 "	7.00 "	8.35 "
	333	MONTREAL Arrive	10.30 P. M.	11.45 A. M.	7.10 P. M.	8.45 A. M.

* Flag Stations.

Refreshment Rooms at Cornwall, Prescott Junction, Kingston, Cobourg, and Toronto,

C. J. Brydges, Managing Director, Montreal

nto.

.E.

TORONTO to DETROIT.

[May 12th.]

Via Grand Trunk Railway

TOTAL MILES	STATIONS.	Express.	Express.	Express	Mail.	Mixed.
	TORONTO... Dep	12.30 A. M.	7.30 A. M.	1.30 P. M.	3.45 P.M.	
5	Carlton.....	12.55 "	*7.42 "	"	3.57 "	
8	Weston.....	12.55 "	7.52 "	1.50 "	4.05 "	
15	Malton.....		8.10 "		4.22 "	
21	Brampton.....	1.30 "	8.28 "	2.20 "	4.38 "	
26	Norval.....		8.42 "		4.54 "	
29	Georgetown.....		8.50 "	2.42 "	5.00 "	
32	Lime House.....		*9.00 "		*5.08 "	
35	Acton West.....		9.10 "	3.00 "	5.17 "	
41	Rockwood.....		9.25 "		5.31 "	
48	Guelph.....	2.45 "	9.45 "	3.33 "	5.50 "	
58	Breslau.....		10.15 "		6.15 "	
62	Berlin.....	3.30 "	10.30 "	4.11 P. M.	6.30 P. M.	
	Berlin..... Dep				6.35 P. M.	
	Doon..... Ar				7.05 P. M.	
68	Petersburgh.....		*10.50 A. M.		*6.46 P. M.	
72	Baden.....		11.00 "		6.55 "	
75	Hamburgh.....		11.07 "		7.03 "	
82	Shakespeare.....		11.25 "	5.00 P. M.	7.22 "	
88	STRATFORD } Ar	4.30 "	11.45 "	5.15 "	7.40 "	
	} De	4.45 "	12.00 NOON.	5.30 "		
98	St. Marys.....	5.10 A. M.	12.25 P. M.	5.55 P. M.	8.10 P. M.	
	St. Mary's... De	8.10 A. M.	12.30 P. M.		8.10 P. M.	
110	Thorndale.....	8.55 "	1.03 "		8.43 "	
120	London..... Ar	9.30 A. M.	1.30 P. M.		9.10 P. M.	
98	St. Mary's.....	5.10 A. M.	12.25 P. M.	5.55 P. M.		
108	Granton.....		*12.45 "			
113	Lucan.....		12.55 "	6.33 "		
120	Craigs.....	6.02 "	1.12 "			
128	Park Hill.....		1.30 "	7.10 "		
136	Widder.....		1.47 "			
145	Forrest.....	6.40 "	2.10 "	7.52 "		
154	Camlachie.....		*2.32 "			
168	SARNIA.....	7.50 "	3.05 "	8.45 "		
	PORT HURON.....	7.50 "	3.05 "	8.50 "		6.00 A. M.
169	Smith's Creek.....		3.32 "			6.35 "
190	Ridgeway.....		4.00 "	9.38 "		7.00 "
196	New Baltimore.....		4.15 "	9.50 "		7.30 "
206	Mount Clemens.....	9.07 "	4.40 "			8.12 "
211	Utica Plank.....		4.52 "			8.35 "
223	Milwaukee Junc.....	9.45 "	5.20 "	10.35 "		9.30 "
228	Detroit Junction.....	9.55 "	5.35 "	10.45 "		9.45 "
231	DETROIT..... Arr	10.10 A. M.	5.50 P. M.	11.00 P. M.		10.10 A. M.

Between Toronto and Sarnia, Toronto Time. Port Huron and Chicago, Chicago Time.
Refreshment Rooms at Toronto, Stratford, Sarnia, and Detroit Junction.

MONTREAL to LACHINE and PROVINCE LINE.

Via Grand Trunk Railway

[May 6th]

Miles.	STATIONS.	Pass.	Pass.	Pass.	Plattsburgh Mail.	Pass.	Pass.
	MONTREAL..... Dep	7.00	9.00	12.00	3.00	5.00	6.30
8	Lachine.....	7.30	9.30	12.30 PM.	3.30	5.30	7.00
10	Caughnawaga.....				4.00		
15	St. Isidore.....				4.20		
21	St. Remi.....				4.45		
25	Lapigeoniere.....				5.00		
32	Johnsons.....				5.30		
36	Hemmingford.....				5.45		
40	PROVINCE LINE. Ar				6.00		

Flag Stations. NOTE.—The train leaving Montreal at 3.00 PM. arrives at Plattsburgh at 7.15 PM

TOTAL MILES

3
8
19
25
35
41
51
62
63
76
85
94
103
110
117
123
132

10
22
132
143
149
156
159
162

168
173
183
190
196
198
202
204
210
216
223
226
231

PROV

Miles.

3
7
14
18
24
29
31
40

*Flag Station

[May 12th.

DETROIT to TORONTO.

[May 12th

Via Grand Trunk Railway

TOTAL MILES.	STATIONS.	Express.	Express.	Express.	Mail.	Express.
	DETROITD	2 20 A. M.	5 30 P. M.	9 25 A. M.		6 00 A. M.
3	Detroit Junction....	2.45 "	5 55 "	9.55 "		6.15 "
8	Milwaukee Junc.....		6.05 "	10.05 "		6.25 "
19	Utica Plank.....		6.38 "			
25	Mount Clemens.....	*3.35 "	6.52 "	*10.42 "		7.05 "
35	New Baltimore.....		7.17 "			7.30 "
41	Ridgeway.....	4.10 "	7.32 "	11.15 "		7.45 "
51	Smith's Creek.....		8.00 "			8.10 "
62	PORT HURON	4.45 "	8.25 "	12.00 NOON.		8.40 "
63	SARNIA	5 30 "	9.20 "	1.00 P. M.		9.35 "
76	Camlachie.....		9.50 "			*10.05 "
85	Forrest.....			2.10 "		10.30 "
94	Widder.....	6.49 "				10.50 "
103	Park Hill.....					11.10 "
110	Craigs.....		11.07 "	3.10 "		11.30 "
117	Lucan.....			3.30 "		11.47 "
123	Granton.....	7.45 "				12.01 "
132	St. Marys.....Arr	8.08 A. M.	1.55 P. M.	4.05 P. M.		12.25 P. M.
	LONDON ..De	11.25 A. M.		2.55 P. M.	6.35 A. M.	
10	Thorndale.....	11.50 "		3.25 "	7.03 "	
22	St. Marys...Ar	12.20 P. M.		4.00 P. M.	7.3 A. M.	
132	St. Marys.....De	8.08 A. M.	11.55 P. M.	4.05 P. M.	7.35 A. M.	12.25 P. M.
143	STRATFORD) Ar	8.30 "	12.20 A. M.	4.30 "		12.50 "
	De	8.45 "	1.00 "	4.40 "	8.03 "	1.05 "
149	Shakespeare.....		1.20 "	5.00 "	8.15 "	1.20 "
156	Hamburgh.....	9.23 "			8.37 "	
159	Baden.....			5.30 "	8.43 "	
162	Petersburgh.....				8.52 "	2.00 "
	Doon.....De				8.15 A. M.	
	Berlin.....Ar				8.45 A. M.	
168	Berlin.....	10.00 A. M.	2.10 "	6.02 "	9.10 A. M.	2.15 "
173	Breslau.....	10.15 "		6.15 "	9.22 "	2.28 "
183	Guelph.....	10.40 "	2.45 "	6.45 "	9.45 "	2.55 "
190	Rockwood.....	11.00 "			10.05 "	3.15 "
196	Acton.....	11.10 "	3.30 "	7.22 "	10.20 "	
198	Lime-house.....				10.28 "	
202	Georgetown.....	11.30 "	3.50 "	7.40 "	10.35 "	3.46 "
204	Norval.....				10.40 "	
210	Brampton.....	11.50 "	4. 2 "	8.00 "	10.56 "	4.03 "
216	Ma'ton.....		4.30 "	8.20 "	11.12 "	4.22 "
223	Weston.....	12.23 P. M.	4 51 "	8.37 "	11.30 "	
226	Carlton.....				11 40 "	
231	TORONTOAr	12.45 P. M.	5.15 A. M.	9 00 P. M.	.50 A. M.	5.00 P. M.

Refreshment Rooms at Detroit Junction, Sarnia, Stratford and Toronto.

LINE.

[May 6th

PROVINCE LINE to LACHINE and MONTREAL.

Via Grand Trunk Railway.

[May 6th.

Pass.	Miles.	STATIONS.	Pass.	Plattsburgh Mail.	Pass.	Pass.	Pass.
		PROVINCE LINE ...D		7 30 A. M.			
	3	Hemmingford.....		7.45			
	7	Johnsons.....		8.00			
	14	Lapigeoniere.....		8.30			
	18	St. Remi.....		8.46			
	24	St. Isidore.....		9.10			
	29	Caughnawaga.....	A. M.	9.30	P. M.	P. M.	P. M.
	31	Lachine.....	8.00	10.00	1.00	4.20	5.30
	40	MONTREALArr	8.30	10.30	1.30	4.50	6.00
			A. M.	A. M.	P. M.	P. M.	P. M.

*Flag Stations. NOTE.—The train arriving at Montreal at 10.30 AM leaves Plattsburgh at 6.00.

3.00 A. M.
3.35 "
4.00 "
4.30 "
5.12 "
5.35 "
6.30 "
7.10 A. M.

go Time.

at 7.15 PM

BUFFALO TO DETROIT.

(May 13th)

TOTAL MILES.	STATIONS.	Express.	Express.	Express.
	BUFFALO Depart	12.30 A. M.	6.50 A. M.	1.00 P. M.
2	FORT ERIE	12.30 "	6.50 "	1.00 "
9	Bertie		7.10 "	
13	Shirk's			
19	PT. COLBORNE	1.07 "	7.38 "	1.40 "
24	Wainfleet		*7.52 "	
30	Boulton Ditch			
32	Feeder	1.35 "	8.15 "	2.10 "
38	DUNNVILLE	1.47 "	8.30 "	2.25 "
46	Canfield		8.53 "	
51	Cook's		*9.05 "	
59	Caldonia	2.30 "	9.25 "	3.15 "
65	Middleport			
68	Onondaga		9.50 "	
72	Cainsville			
75	BRANTFORD	3.08 "	10.10 "	3.55 "
83	PARIS	3.25 "	10.30 "	4.11 "
89	Richwood	3.40 "		
92	Drumbo		10.47 "	
97	Bright		11.00 "	
100	Ratho			
107	Tavistock		11.25 "	5.10 "
115	STRATFORD } Arrive	4.40 "	11.45 "	5.30 "
	} Depart	4.45 "	12.00 NOON	5.30 "
125	St. Marys	5.10 "	12.25 P. M.	5.55 "
155	Granton		*12.45 "	
140	Lucan		12.55 "	6.33 "
147	Craigs	6.02 "	1.12 "	
155	Park Hill		1.30 "	7.10 "
164	Widder	6.40 "	1.47 "	
173	Forrest		2.10 "	7.52 "
182	Camlachie		*2.32 "	
195	SARNIA	7.50 "	3.05 "	8.45 "
196	PORT HURON	7.50 "	3.05 "	8.50 "
217	Ridgeway		4.00 "	9.38 "
223	New Baltimore		4.15 "	9.50 "
233	Mt. Clemens	9.07 "	4.40 "	
255	Detroit Junction	9.55 "	5.35 "	10.45 "
258	DETROIT Arrive	10.10 A. M.	5.50 P. M.	11.00 P. M.

The Train leaving Buffalo at 2.00 A.M., runs through to Detroit on Sunday morning, but not on Monday.

* Flag Stations.

Arthabaska to Three Rivers.		
Via Grand Trunk Railway.		
MILES.	STATIONS.	Mixed.
	ARTHABASKA Ju'n...De	7.30 AM
4	Walker's Cutting	7.48 "
11	Bulstrode	8.14 "
19	Aston	8.42 "
25	St. Celestin	9.12 "
31	St. Gregoire	9.34 "
35	DOUCET'S LANDING, (opposite Three Rivers)..Ar	9.52 AM

Three Rivers to Arthabaska. [May 2		
Via Grand Trunk Railway.		
MILES.	STATIONS.	Mixed.
	DOUCET'S LANDING, (opposite Three Rivers)..D	4.00 PM
4	St. Gregoire	4.16 "
10	St. Celestin	4.36 "
17	Aston	4.57 "
24	Bulstrode	5.22 "
30	Walker's Cutting	5.45 "
35	ARTHABASKA Ju n...Ar	6.15 PM

TOTAL MILES.	
3	DI
25	De
35	Ne
41	Ri
62	PC
63	SA
76	Ca
85	Fo
94	Wi
103	Pa
110	Cr
117	Lu
123	Gr
132	St.
143	ST
151	Ta
158	Ra
161	Bri
166	Dr
169	Ric
175	PA
183	BR
186	Ca
191	On
193	Mic
200	Ca
207	Co
212	Ca
220	DU
226	Fee
228	Bo
234	Wa
239	PO
245	Shi
249	Ber
257	FO
259	BU

Miles.	
6	MO
11	St. L.
19	Bress
	Laca
27	ST.
32	Gran
38	Stott
42	Laco
49	ROU

† Connect
‡ Connect

DETROIT TO BUFFALO.

[May 13th.]

TOTAL MILES.	STATIONS.	Express.	Express.	Express.
	DETROIT Depart	2.20 A. M.	5.30 P. M.	9.25 A. M.
3	Detroit Junction	2.45 "	5.55 "	9.55 "
25	Mount Clemens		6.52 "	
35	New Baltimore		7.17 "	
41	Ridgeway	4.10 "	7.32 "	11.15 "
62	PORT HURON	4.45 "	8.25 "	12.00 Noon
63	SARNIA	5.30 "	9.20 "	1.00 P. M.
76	Camlachie	6.00 "	9.50 "	
85	Forrest	6.20 "		2.10 "
94	Widder	6.40 "		
103	Park Hill	7.00 "		
110	Craigs	7.18 "	11.07 "	3.10 "
117	Lucan	7.33 "		3.30 "
123	Granton	7.45 "		
132	St. Marys	8.08 "	11.55 "	4.05 "
143	STRATFORD } Arrive	8.30 "	12.20 A. M.	4.30 P. M.
 Depart	8.40 "	12.30 "	4.45 "
151	Tavistock	9.00 "	12.46 "	5.10 "
158	Ratho	*9.15 "		
161	Bright	9.22 "		
166	Drumbo	9.33 "		
169	Richwood	*9.40 "	1.00 "	
175	PARIS	9.53 "	1.38 "	6.07 "
183	BRANTFORD	10.10 "	1.55 "	6.28 "
186	Cainsville			
191	Onondaga			6.48 "
193	Middleport			
200	Caledonia	10.50 "	2.30 "	7.08 "
207	Cook's			
212	Canfield			7.40 "
220	DUNNVILLE	11.40 "	3.05 "	8.00 "
226	Feeder	11.52 "	3.27 "	8.15 "
228	Boulton Ditch			
234	Wainfleet			
239	PORT COLBORNE	12.22 P. M.	3.55 "	8.47 "
245	Shirk's			
249	Bertie			
257	FORT ERIE	1.00 "	4.30 "	9.30 "
259	BUFFALO	1.45 P. M.	5.15 A. M.	10.23 P. M.

MONTREAL AND ROUSE'S POINT.

[July 1st

Via Grand Trunk Railway.

Montreal to Rouses Point

Rouses Point to Montreal.

Miles.	STATIONS.	Exp.	Exp.	Miles.	STATIONS.	Exp.	Exp.
		A. M.	P. M.			A. M.	P. M.
6	MONTREAL De	8.40	3.30	6	ROUSE'S PT De.	6.45	
	St. Lambert	9.03	3.53	6	Lacolle	7.05	
11	Brosseaus		4.05	10	Stottsville	7.15	
19	Lacadie	9.30	4.25	16	Grande Ligne	7.35	
27	ST. JOHNS } A.ri.	9.45	4.40	22	ST. JOHNS } Ar.	7.55	
 Dep.		4.45	 De.	8.00	8.05
32	Grande Ligne		5.00	29	Lacadie	8.20	8.25
38	Stottsville		5.15	38	Brosseaus	8.45	8.47
42	Lacolle		5.25	43	St. Lambert	9.03	9.05
49	ROUSE'S PT Ar		5.45	49	MONTREAL Ar.	9.25	9.25
		P. M.	P. M.			A. M.	P. M.

† Connecting at St. Johns with Vermont Central Railway for Boston.

‡ Connecting at St. Johns with Vermont Central Railway for New York & Boston.

BUFFALO TO GODERICH.

Via Grand Trunk Railway.

[May 13th

TOTAL MILES.	STATIONS.	Express.	Express.	Express.	Local.	Local
	BUFFALO Dep.	12.30 A. M.	6.50 A. M.	1.00 P. M.		3.30 P. M.
2	FORT ERIE.....	12.30 "	6.50 "	1.00 "		4.00 "
9	Bertie.....		7.10 "			4.35 "
13	Shirk's.....					4.50 "
19	PT. COLBORNE..	1.07 "	7.38 "	1.40 "		5.15 "
24	Wainfleet.....		7.52 "			5.40 "
30	Boulton Ditch.....					
37	Feeder.....	1.35 "	8.15 "	2.10 "		6.15 "
38	DUNNVILLE.....	1.47 "	8.30 "	2.25 "		6.47 "
41	Canfield.....		8.53 "			7.40 "
51	Cook's.....		9.05 "			7.57 "
59	Caledonia.....	2.30 "	9.25 "	3.15 "		8.27 "
67	Middleport.....					8.50 "
68	Onondaga.....		9.50 "			9.00 "
72	Cainsville.....					
75	BRANTFORD.....	3.08 "	10.10 "	3.55 "	5.00 A. M.	5.30 P. M.
83	PARIS.....	3.25 "	10.30 "	4.11 "	5.40 "	
89	Richwood.....	3.40 "			6.10 "	
92	Drumbo.....		10.47 "		6.25 "	
97	Bright.....		11.00 "		6.55 "	
100	Ratho.....				7.10 "	
107	Tavistock.....		11.25 "	5.10 "	7.45 "	
115	STRATFORD { Ar	4.40 A. M.	11.45 "	5.30 "	8.30 "	
	{ De		12.15 P. M.	7.50 "	9.00 "	
128	Mitchell.....		1.05 "	8.40 "	9.55 "	
133	Carron Brook.....		1.25 "	9.00 "	10.20 "	
139	Seafurth.....		1.50 "	9.25 "	10.50 "	
141	Harpurhey.....					
147	Clinton.....		2.20 "	10.00 "	11.30 "	
160	GODERICH ..Ar		3.00 P. M.	10.50 P. M.	12.30 P. M.	

TOTAL MILES
12
17
12
21
27
32
45
53
60
63
68
71
77
85
88
92
95
101
109
114
122
128
130
135
141
147
151
158
160

* Flag Stations. Refreshment Rooms at Buffalo, Stratford, and Goderich. The Express, which leaves Buffalo at 12.30 A. M., runs through to Stratford on Sunday morning but not on Monday morning.

C. J. Brydges, Managing Director, Montreal, C. E.

* Flag S

ERIE RAILWAY.

NEW YORK TO BUFFALO.

[April 20th

Miles	STATIONS.	Express.	Express.	Express.	Express.
	NEW YORK, Foot Chamber St. Dep.	8.00 A. M.	10.00 A. M.	7.00 P. M.	
	Jersey City.....	8.15 "	10.17 "	7.20 "	
1	Paterson.....	8.55 "	11.03 "	8.00 "	
3	uffern.....	9.27 "	11.47 "	8.33 "	
4	Purness.....	10.01 "	12.48 P. M.	9.25 "	
6	Middletown.....	10.48 "	1.45 "	10.08 "	
8	Port Jervis.....	11.34 "	2.38 "	11.00 "	
12	Narrowsburg.....		4.07 "	12.25 A. M.	
17	Deposit.....	2.41 P. M.	6.31 "	2.58 "	
20	Great Bend.....	3.53 "	7.52 "	3.35 "	
21	Binghampton.....	4.19 "	8.31 "	4.11 "	
23	Owego.....	5.08 "	9.34 "	5.03 "	
27	Elmira.....	6.25 "	11.35 "	6.27 "	
29	Corning.....	7.03 "	12.18 A. M.	7.07 "	
33	Hornellsville.....	8.42 "	2.40 "	8.42 "	
35	Nunda.....	9.32 "			
36	Portage.....	9.48 "	3.50 "		
39	ATTICA { Arrive	10.53 "	4.55 "		
	{ Depart		5.00 "		
42	BUFFALO..... Arr	12.00 P. M.	6.15 A. M.	12.25 P. M.	

Robert H. Berdell, President New York.

Miles
31
61
70
91
142
159
196
218
232
256
310
345
366
385
401
416
421
422

B
A
P
N
H
C
E
O
B
G
D
N
P
M
T
S
P
J
N

PORT HOPE, LINDSAY and BEAVERTON R'Y.

Trains are run by Port Hope Time, which is 20 minutes slower than Montreal Time. [May 27th.]

PORT HOPE to LINDSAY.				LINDSAY to PORT HOPE.			
Miles	STATIONS.	Mail.	Mixed.	Miles	STATIONS.	Mail.	Mixed.
	PORT HOPE Depart	3.00 P.M.	5.45 A.M.		LINDSAY.. Depart	9.35 A.M.	12.35 P.M.
18	Millbrook.....	4.40	7.20	10	Omemece.....	10.20	1.20
24	Bethany.....	5.08	7.50	19	Bethany.....	11.05	2.05
33	Omemece.....	5.45	8.25	25	Millbrook.....	11.45	2.40
43	LINDSAY .Arrive	6.30 P.M.	9.10 A.M.	43	PORT HOPE Arrive	1.10 P.M.	4.20 P.M.

PORT HOPE to PETERBORO				PETERBORO to PORT HOPE.			
Miles	STATIONS.	Mail	Mixed.	Miles	STATIONS.	Mail.	Mixed.
	PORT HOPE Depart	10.10 A.M.	1.15 P.M.		PETERBORO..Dep.	3.30 P.M.	6.20 A.M.
8	Perrytown ...	10.45	1.50	9	Fraserville	3.55	6.50
15	Summit.....	11.15	2.15	13	Millbrook.....	4.30	7.20
18	Millbrook.....	11.45	2.35	16	Summit.....	4.50	7.45
22	Fraserville.....	12.10	2.55	23	Perrytown.....	5.15	8.12
31	PETERBORO .Arrive	12.35 P.M.	3.10 P.M.	31	PORT HOPE .Arr.	5.50 P.M.	8.50 A.M.

A. T. Williams, Superintendent, Port Hope.

LONDON and PORT STANLEY RAILWAY.

Trains are run by London Time. [May 7th.]

London to Port Stanley.				Port Stanley to London.			
Miles	STATIONS.	Passeng'r	Passeng'r	Miles	STATIONS	Passeng'r	Passeng'r
	LONDON..... Dep	7.30 A.M.	3.00 P.M.		P'T STANLEY..De	9.30 A.M.	5.10 P.M.
3	Pond Mills	7.40	3.10	4	White's.....	9.40	5.20
5	Westminister North	7.47	3.17	9	St. Thomas.. } .Arr	9.50	5.30
8	Westminister South	7.57	3.27	9	St. Thomas.. } .Dep	9.55	5.40
11	Yarmouth.....	8.05	3.35	13	Yarmouth.....	10.05	5.50
15	St. Thomas.. } .Arr	8.15	3.45	16	Westminister South	10.15	6.00
15	St. Thomas.. } .Dep	8.25	4.00	19	Westminister North	10.25	6.10
20	White's.....	8.35	4.10	21	Pond Mills.....	10.35	6.20
24	P'T STANLEY.. Ar	8.45 A.M.	4.20 P.M.	24	LONDON..... Arr	10.45 A.M.	6.30 P.M.

W. Bowman, Superintendent, London.

OTTAWA AND PRESCOTT RAILWAY.

Trains are run by Montreal Time. [May 7th.]

OTTAWA TO PRESCOTT.				PRESCOTT TO OTTAWA.			
MILES.	STATIONS.	Exp.	Accommodation.	MILES.	STATIONS.	Exp.	Accommodation.
	OTTAWA.....Dep	A.M. 7.00	P.M. 1.30		PRESCOTT.....Dep	P.M. 2.45	A.M. 7.00
6	Billings.....	7.15	2	Prescott Junction.....	2.55	7.15
10	Gloucester.....	7.30	2.10	9	Spencerville.....	3.15	7.40
16	Rossiters.....	7.45	2.30	16	Oxford.....	3.40	8.10
22	Osgoode.....	8.00	2.50	22	Kemptville.....	3.55	8.30
31	Kemptville.....	8.30	3.20	31	Osgoode.....	4.20	9.05
27	Oxford.....	8.45	3.40	37	Rossiters.....	4.35	9.35
44	Spencerville.....	9.05	4.05	42	Gloucester.....	4.50	9.55
52	Prescott Junction.....	9.25	4.30	48	Billings.....	5.05
54	PRESCOTT.....Ar	9.35	4.45	54	OTTAWA.....Ar	5.20	10.30
		A.M.	P.M.			P.M.	A.M.

T. S. Dettlor, Superintendent, Prescott, C.W.

Miles

14
18
22
29
30
34
38
41
49
52
63
73
80
85
94

CICI

Miles

65
136
167
179
207
242
267

S

Miles

8
13
17
19
20
25
37
39
44
54
62
71
78
84
88
95
100

NORTHERN RAILWAY OF CANADA.

Trains are run by Toronto Time.

[May 6th.

TORONTO to COLLINGWOOD.

COLLINGWOOD to TORONTO.

Miles	STATIONS.	Mail.	Exp's	Miles	STATIONS.	Mail.	Exp's
	TORONTO Dep	A.M. 7.00	P.M. 4.00		COLLINGWOOD..... De	P.M. 3.30	P.M. 5.30
14	Thornhill	7.43	4.43	9	Stayner	3.58	5.55
18	Richmond Hill	7.55	4.56	14	Sunnidale	4.20	6.15
22	King	8.10	5.11	21	Angus	4.42	6.35
30	Aurora	8.32	5.34	31	Barrie	5.35	7.13
34	Newmarket	8.45	5.45	42	Lefroy	6.40	7.54
38	Holland Landing	8.58	5.58	45	Gilford	6.48	8.02
41	Bradford	9.08	6.09	53	Bradford	7.09	8.23
49	Gilford	9.31	6.31	56	Holland Landing	7.20	8.34
52	Lefroy	9.40	6.40	60	Newmarket.....	7.33	8.45
63	Barrie	10.35	7.23	64	Aurora	7.45	9.00
73	Angus	11.2	8.14	72	King	8.03	9.20
80	Sunnidale	11.4	8.35	76	Richmond Hill	8.14	9.33
85	Stayner	12.01	8.53	80	Thornhill	8.25	9.45
94	COLLINGWOOD..... Arr	12.5	9.20	94	TORONTO	9.05	10.22
		P.M.	P.M.			P.M.	A.M.

Fred. Cumberland, Managing Director, Toronto.

CINCINNATI, HAMILTON & DAYTON AND DAYTON & MICHIGAN RAILWAYS

Trains are run by Columbus Time.

[April 28th.

DETROIT TO CINCINNATI.

CINCINNATI TO DETROIT.

Miles	STATIONS.	Express.	Express.	Miles	STATIONS.	Express.	Express.
	DETROIT Dep	6.30 A.M.	5.20 P.M.		CINCINNATI Dep	6.00 A.M.	6.30 P.M.
65	Toledo.....	11.00 "	9.00 "	25	Hamilton.....	7.12 "	7.46 "
136	Lima.....	3.35 P.M.	12.40 A.M.	66	Dayton.....	8.50 "	9.40 "
167	Sidney.....	5.05 "	2.10 "	88	Piqua.....	10.08 "	11.26 "
179	Piqua.....	5.35 "	2.39 "	100	Sidney.....	0.40 "	12.04 A.M.
207	Dayton.....	6.55 "	3.55 "	131	Lima.....	12.35 P.M.	2.25 "
242	Hamilton.....	8.58 "	5.12 "	202	Toledo.....	3.50 "	6.30 "
267	CINCINNATI. Arr	10.00 P.M.	6.10 A.M.	267	DETROIT..... Arr	6.15 P.M.	10.50 A.M.

D. McLaren, General Superintendent, Cincinnati, O.

PORTLAND and KENNEBEC RAILWAY.

Trains are run by Portland Time.

[June 17th.

SKOWHEGAN to PORTLAND.

PORTLAND to SKOWHEGAN.

Miles	STATIONS.	Passeng'r	Passeng'r	Miles	STATIONS.	Passeng'r	Passeng'r
	SKOWHEGAN .. Dep	9.00 A.M.			PORTLAND ... Dep	1.00 P.M.	8.15 P.M.
8	Pishon Ferry	9.20 "		5	Westbrook.....	1.15 "	8.25 "
13	Somerset Mills	9.30 "		12	Cumberland.....	1.30 "	8.45 "
17	Kendalls Mills	9.50 "		16	Yarmouth	1.42 "	8.55 "
19	Waterville	10.00 "		22	Freeport.....	2.00 "	9.10 "
20	Winslow	10.05 "		30	BRUNSWICK	2.30 "	9.40 "
25	Vassalboro'	10.20 "		38	Bowdoinham.....	2.55 "	10.20 "
37	Augusta	11.00 "	4.00 P.M.	46	Richmond.....	3.15 "	10.50 "
39	Hallowell.....	11.00 "	4.07 "	56	Gardiner.....	3.45 "	10.50 "
44	Gardiner	11.25 "	4.23 "	61	Hallowell.....	4.00 "	11.05 "
54	Richmond	11.55 "	4.45 "	63	Augusta... } ... Arr	4.15 "	11.15 P.M.
62	Bowdoinham	12.15 P.M.	5.00 "	63	Augusta... } ... Dep	4.15 "	
70	BRUNSWICK	12.55 "	5.25 "	75	Vassalboro'.....	4.55 "	
78	Freeport.....	1.15 "	5.45 "	80	Winslow.....	5.12 "	
84	Yarmouth	1.40 "	6.06 "	81	Waterville.....	5.20 "	
88	Cumberland	1.53 "	6.10 "	83	Kendalls Mills.....	5.40 "	
95	Westbrook.....	2.15 "	6.27 "	87	Somerset Mills.....	5.50 "	
109	PORTLAND... Arr	2.30 P.M.	6.42 P.M.	92	Pishon Ferry.....	6.05 "	
				100	SKOWHEGAN. Ar	6.25 P.M.	

W. Hatch, Supt., Augusta, Me.

BROCKVILLE AND OTTAWA RAILWAY.

Trains are run by Montreal Time

(July 1st.)

SAND POINT TO BROCKVILLE.				BROCKVILLE TO SAND POINT.			
Miles.	STATIONS	Mixed.	Mixed.	Miles.	STATIONS.	Mix.	Mixed.
	Sand Point....Depart	5.45AM.	2.00PM.		Brockville.....Depart	3.45PM	7.30AM.
5½	Arnprior.....	6.35 "	2.50 "	0½	G. T. Junction.....	3.50 "	7.35 "
13½	Pakenham.....	7.11 "	3.26 "	5½	*Fairfield.....	4.11 "	7.58 "
16½	*Snedden's.....	7.21 "	3.33 "	7	*Clark's.....	4.17 "	8.04 "
22½	Almonte.....	7.53 "	4.0 "	10	Bellamy's.....	4.31 "	8.18 "
28½	Carleton Place.....	8.21 "	4.36 "	12	*Jelly's.....	4.41 "	8.28 "
33½	*Beckwith.....	8.39 "	4.54 "	13½	*Bell's.....	4.51 "	8.38 "
37½	Franktown.....	9.00 "	5.14 "	16	*Wolford.....	5.00 "	8.47 "
41	*Ferguson's.....	9.15 "	5.30 "	21	Irish Creek.....	5.24 "	9.11 "
46½	Smith's Falls.....	9.46 "	6.00 "	25	*Story's.....	5.44 "	9.30 "
49½	*Story's.....	10.02 "	6.18 "	28	Smith's Falls.....	6.00 "	9.46 "
53½	Irish Creek.....	10.21 "	6.37 "	33½	*Ferguson's.....	6.20 "	10.05 "
58½	*Wolford.....	10.45 "	7.00 "	37	Franktown.....	6.30 "	10.17 "
61	*Bell's.....	10.54 "	7.10 "	41	*Beckwith.....	6.42 "	10.32 "
62½	*Jelly's.....	11.04 "	7.20 "	46	Carleton Place.....	7.12 "	11.00 "
64½	Bellamy's.....	11.14 "	7.30 "	52	Almonte.....	7.40 "	11.30 "
67½	*Clark's.....	11.28 "	7.44 "	55½	*Snedden's.....	7.58 "	11.43 "
69	*Fairfield.....	11.34 "	7.50 "	61	Pakenham.....	8.30 "	12.15 "
74	G. T. Junction.....	11.55 "	8.10 "	69	Arnprior.....	9.00 "	12.45 "
74½	Brockville.....Arrive	12.00P.M.	8.15PM.	74½	Sand Point....Arrive	9.25PM.	1 10P.M.

PERTH BRANCH.

	Smith's Falls.....Dep	A.M.	P.M.		Perth.....Dep	P.M.	P.M.
6	*Pike Falls.....	9.50	6.05	6	*Pike Falls.....	5.00	8.40
12	Perth.....Arr	10.17	6.32	12	Smith's Falls.....Arr	5.27	9.07
		A.M.	P.M.				P.M.	P.M.	

* Flag Stations.

H. Abbott, Manager for Trustee, Brockville, C.W.

PORTLAND, BOSTON AND NEW YORK.

Via P. Saco and P., Eastern (Mass.) Boston and Worcester, Western (Mass.), New Haven Hartford and Springfield, and New York and New Haven Railways. [June.]

Portland to Boston and New York.

New York to Boston and Portland.

Miles.	STATIONS.	Pas-senger.	Pas-senger.	Pas-senger.	Miles.	STATIONS.	Pas-senger.	Pas-senger.	Pas-senger.
	PORTLAND..De		8.40 AM	2.55 PM		N. Y., 27th St.. De	8.00 PM	3.00 PM	8.00 PM
13	Saco.....		9.20 "	3.37 "	1	" 42d Street	8.08 "	3.10 "	8.08 "
52	Portsmouth.....		11.10 "	5.25 "	57	Bridgeport.....	10.15 "	5.20 "	10.33 "
108	Boston..... { Ar		1.45 PM	8.00 "	74	New Haven.....	10.55 "	6.05 "	11.15 "
 { De		2.50 "	8.30 "	110	Hartford.....	12.23 AM	7.32 "	12.40 AM
152	Worcester.....	8.30 AM	4.00 "	10.00 "	136	Springfield. { Ar	1.10 "	8.22 "	1.44 "
206	Springfield. { Ar	10.05 "	5.45 "	12.00 Mi	190	Worcester.....	3.40 "	10.50 "	4.15 "
 { De	12.00 "	6.00 "	12.00 "	224	Boston..... { Ar	5.05 "	12.15 AM	6.00 AM
232	Hartford.....	12.50 PM	6.50 "	12.55 AM	 { De	7.30 "	3.00 PM	
288	New Haven.....	2.05 "	8.00 "	2.05 "	290	Portsmouth.....	10.00 "	5.30 "	
285	Bridgeport.....	2.40 "	8.35 "	2.50 "	329	Saco.....	11.50 "	7.25 "	
341	N. York, 42d St.	4.47 "	10.42 "	4.54 "	342	PORTLAND..Arr	12.30 PM	7.58 PM	
342	" 27th St..Ar	4.55 PM	10.50 PM	5.00 AM					

Chas. Goodwin, President, Portland, Saco & Portsmouth R'y., Portsmouth, N. H.
 George M. Browne, President, Eastern (Mass.) Railway, Boston, Mass.
 Ginery Twichell, President, Boston & Worcester Railway, Boston, Mass.
 Charles W. Chapin, President Western (Mass.) Railway, Springfield, Mass.
 C. F. Pond, President, New Haven, Hartford & Springfield R'y., Hartford, Conn.
 George B. Carhart, President, New York & New Haven Railway, New York.

STANSTEAD, SHEFFORD & CHAMBLY RAILWAY.

Trains are run by St. Albans Time, which is 10 minutes faster than Montreal Time.

[July 1st.

Waterloo to St. Johns.

St. Johns to Waterloo.

Miles	STATIONS.	Express.	Mail.	Miles	STATIONS.	Mail.	Express.
	WATERLOO...Dep	2.00 P.M.	6.00 A.M.		ST. JOHNS...Dep	4.40 P.M.	9.50 A.M.
6	West Shefford		6.15 "	7	Soixante	4.56 "	
7	Holland's		6.20 "	10	St. Brigide	5.02 "	
14	Granby	2.30 "	6.40 "	14	West Farnham	5.12 "	10 25 "
22	St. George		7.00 "	21	St. George	5.40 "	
29	West Farnham.....	3.10 "	7.15 "	29	Granby	5.55 "	11.00 "
33	St. Brigide		7.30 "	36	Holland's	6.20 "	
36	Soixante		7.40 "	37	West Shefford	6.25 "	
43	ST. JCHNS .. Arr	3.45 P.M.	8.00 A.M.	43	WATERLOO.. Arr	6.40 P.M.	11.35 A.M.

A. B. Foster, Manager, Waterloo C.E.

NOVA SCOTIA RAILWAY.

June 3.

HALIFAX to PICTOU.

PICTOU to HALIFAX.

Miles	STATIONS.	Mail.	Accommodation.	Miles	STATIONS.	Accommodation.	Mail.
	Halifax..... depart	6.15 A.M.	3.15 P.M.		Pictou..... depart		11.45 A.M.
4	Four Mile House*...	6.25 "	3.25 "	1	Pictou Landing.....		11 55 "
8	Bedford	6.40 "	3.45 "	2	Fisher's Grant.....		12.00 "
11	Rocky Lake*...	6.47 "	3.55 "	9	N. GLASGOW { arr		12.25 "
13	Windsor Junc.. { dep	6.55 "	4.05 "			{ dep	12.30 "
20	Fletcher's*	7.15 "	4.30 "	12	Coal Mines.....		12.40 "
23	Grand Lake*	7.23 "	4.40 "	17	Hopewell.....		1.0 "
25	Oakfield*	7.30 "	4.50 "	24	Glengarry.....		1.30 "
28	Enfield.....	7.35 "	5.00 "	31	West River.....		2.00 "
30	ELMSDALE.. { arr	7.43 "	5.10 "	39	Riversdale.....		2.30 "
		{ dep	5.15 "	43	Union*		2.50 "
32	Truro Road.....		5.25 "	52	Truro..... { arr		3.20 "
35	Wickwire's*	7.58 "	5.35 "			{ dep	6.30 A.M.
39	SHUBENACADIE a	8.10 "	5.55 "	56	Johnston's Road*	6.45 "	3.47 "
	" d	8.15 "		60	Brookfield	7.05 "	4.00 "
44	Stewiacke	8.25 "	6.15 "	65	Polly Bog*	7.25 "	4.15 "
48	Polly Bog*	8.35 "	6.30 "	69	Stewiacke	7.40 "	4.25 "
53	Brookfield	8.50 "	6.50 "	74	SHUBENACADIE a	8.00 "	4.38 "
57	Johnston Road*	9.03 "	7.05 "		" d	8.10 "	
61	Truro..... { arr	9.15 "	7.20 P.M.	78	Wickwire's*	8.25 "	4.50 "
		{ dep	9.30 "	81	Truro Road.....	8.35 "	
70	Union*	10.00 "		83	ELMSDALE.. { dep		5.05 "
74	Riversdale.....	10.15 "				{ arr	5.10 "
82	West River.....	10.45 "		85	Enfield	8.55 "	5.15 "
89	Glengarry.....	11.15 "		88	Oakfield*	9.05 "	5.22 "
96	Hopewell.....	11.45 "		90	Grand Lake*	9.12 "	5.30 "
101	Coal Mines.....	12.05 "		93	Fletcher's*	9.20 "	5.37 "
104	N. GLAS OW { arr	12.15 "		100	Windsor Junc.. { arr	9.40 "	5.55 "
		{ dep	12.25 "			{ dep	9.45 "
111	Fisher's Grant	12.50 "		102	Rocky Lake*	9.55 "	
112	Pictou Landing	12.55 "		105	Bedford	10.00 "	6.15 "
113	Pictou.....	1.05 P.M.		109	Four Mile House	10.20 "	6.30 "
				113	Halifax	10.30 A.M.	6.40 P.M.

HALIFAX to WINDSOR.

WINDSOR to HALIFAX.

	Halifax..... dep	7.00 A.M.	7.10 P.M.		Windsor	dep	7.00 A.M.	4.50 P.M.
3	Four Mile House*...	7.10 "	4.20 "	3	Three Mile Plain*...		7.10 "	4.58 "
8	Bedford	7.25 "	4.40 "	5	Newport		7.25 "	5.05 "
10	Rocky Lake	7.35 "	4.50 "	9	Ellershous*		7.40 "	5.17 "
13	Windsor Junc. { arr	7.40 "	5.00 "	11	Stillwater*		7.55 "	5.30 "
		{ dep	7.45 "				8.20 "	5.50 "
16	Beaver Bank.....	7.55 "	5.15 "	13	Mt. UNIACKE { arr		8.25 "	5.55 "
26	Mt. UNACKE...dep	8.30 "	5.55 "			{ dep	8.25 "	5.55 "
33	Stillwater*	8.50 "	6.10 "	28	Beaver Bank.....		8.55 "	6.20 "
36	Ellershous*	9.00 "	6.25 "	31	Windsor Junc ... dep		9.05 "	6.35 "
39	Newport	9.10 "	6.45 "	34	Rocky Lake		9.20 "	6.40 "
42	Three Mile Plain*...	9.17 "	7.00 "	37	Bedford		9.30 "	6.50 "
45	Windsor	9.25 A.M.	7.10 P.M.	41	Four Mile House		9.50 "	7.05 "
				45	Halifax	arr	10.00 A.M.	7.15 P.M.

*Flag Stations.

Geo. Taylor, Superintendent, Richmond, N. S.

Y.
uly 1st.
INT.
Mixed.
7.30 AM.
7.35 "
7.58 "
8.04 "
8.18 "
8.28 "
8.38 "
8.47 "
8.51 "
9.00 "
9.05 "
9.17 "
9.32 "
9.40 "
9.50 "
10.00 "
10.15 "
10.30 "
10.43 "
10.55 "
11.05 "
11.15 "
11.30 "
11.45 "
12.00 P.M.
V.
K.
aven
June.
id.
as-
nger.
00 PM
8 "
3 "
5 "
0 AM
4 "
0 "
5 "
0 AM

GREAT WESTERN RAILWAY.

Trains are run by Hamilton Time.

[Sept. 23rd.

SUSPENSION BRIDGE TO WINDSOR.

Miles	STATIONS.	Guelph Mixed	Mixed.	Morn'g Expr'ss	Day Expr'ss	St'bt. * Expr'ss	Night † Mail.
	SUSPENSION BRIDGE.....Dep		2.50 PM	1.00 AM	1.10 PM	7.50 PM	12.20 AM
9 ¹ / ₂	Thorold.....		3.30 "	7.20 "	1.30 "	8.15 "	12.40 "
11 ¹ / ₂	St. Catherines.....		3.49 "	7.25 "	1.35 "	8.22 "	12.45 "
17	Jordan.....		4.10 "	7.37 "	8.40 "
22 ¹ / ₂	Beamsville.....		4.35 "	7.50 "	8.52 "
26 ¹ / ₂	Grimsby.....		4.50 "	8.00 "	2.05 "	9.00 "	1.20 "
31 ¹ / ₂	Ontario.....		5.10 "	8.15 "	2.15 "
43 ¹ / ₂	HAMILTON } Arrive	6.00 "	6.00 "	8.45 "	2.40 "	9.40 "	2.05 "
	HAMILTON } Depart	6.40 AM	6.10 "	9.00 "	2.55 "	9.50 "	2.20 "
49 ¹ / ₂	Dundas.....		7.10 "	9.25 "	3.12 "	10.10 "
54 ¹ / ₂	Copetown.....		7.35 "	7.20 "	9.45 "	3.30 "	10.25 "
59	Lynden.....		8.00 "	7.35 "	10.00 "
62 ¹ / ₂	Harrisburg.....		8.15 AM	7.47 "	10.12 "	3.45 "	10.40 "
72	PARIS.....		8.25 "	10.43 "	4.00 "	11.05 "	3.35 "
79	Princeton.....		8.50 "	11.00 "	4.15 "	11.20 "	3.50 "
81	Arnolds.....		8.51 "	11.05 "
86	Eastwood.....		9.15 "	11.15 "
90 ¹ / ₂	Woodstock.....		9.30 "	11.25 "	4.40 "	11.50 "	4.15 "
95 ¹ / ₂	Beachville.....		9.45 "	11.35 "	4.50 "
100	Ingersoll.....		10.00 "	11.45 "	5.00 "	12.10 "	4.35 "
109 ¹ / ₂	Dorchester.....		10.35 "	12.05 PM	12.30 "
119 ¹ / ₂	LONDON } Arrive	11.15 PM	11.15 PM	12.30 "	5.45 "	12.55 AM	5.15 "
	LONDON } Depart	6.10 AM	6.10 AM	12.50 "	6.00 "	1.05 "	5.25 "
129 ¹ / ₂	Komoka.....		6.50 "	1.10 "	6.25 "	1.30 "	5.45 "
134	Mount Brydges.....		7.10 "	1.22 "	6.35 "
140	Longwood.....		7.45 "	1.35 "	6.47 "	1.55 "	6.07 "
145	Appin.....		8.00 "	1.45 "
149 ¹ / ₂	Glencoe.....		8.15 "	1.55 "	7.10 "	2.15 "	6.25 "
155 ¹ / ₂	Newbury.....		8.35 "	2.07 "	7.23 "	2.30 "	6.37 "
161	Bothwell.....		8.55 "	2.20 "	7.35 "	2.40 "	6.50 "
168 ¹ / ₂	Thamesville.....		9.20 "	2.37 "	7.50 "	2.57 "	7.07 "
174 ¹ / ₂	Lewisville.....		9.55 "
183 ¹ / ₂	CHATHAM.....		10.30 "	3.15 "	8.25 "	3.30 "	7.45 "
198	Baptiste Creek.....		11.30 "	3.50 "	9.00 "	4.05 "	8.20 "
203	Stoney Point.....		11.55 "	4.00 "
211 ¹ / ₂	Belle River.....		12.55 "	4.20 "	9.30 "	4.35 "	8.50 "
229	WINDSOR.....Arrive		2.10 PM	5.00 PM	10 10 PM	5.20 AM	9.30 AM

* Runs Sundays, not Saturdays.

† Daily, Sundays and Saturdays except 1.

TORONTO BRANCH.—TORONTO TO HAMILTON.

Miles	STATIONS.	Accom.	Expr'ss	Expr'ss	Mail.	Accom.	Mixed.
	TORONTO (Yonge Street Station) D (Union Station).....	6.50 AM	9.15 AM	12.35 PM	4.15 PM	P. M.	6.20 PM
1 ¹ / ₂	Grand Junction.....	6.55 "	9.20 "	12.40 "	4.20 "	W. Square Accom.	6.25 "
7	Mimico.....	7.00 "	9.25 "	12.45 "	4.25 "	6.30 "
13 ¹ / ₂	Port Credit.....	7.14 "	9.40 "	12.58 "	4.37 "	6.50 "
21 ¹ / ₂	Oakville.....	7.30 "	9.55 "	1.10 "	4.55 "	7.15 "
25 ¹ / ₂	Bronte.....	7.50 "	10.15 "	1.30 "	5.12 "	7.42 "
32	Wellington Square.....	8.00 "	10.25 "	7.55 "
35	Waterdown.....	8.17 "	10.40 "	1.55 "	5.45 "	5.15 "	8.28 "
37 ¹ / ₂	Toronto Junction.....	8.25 "	5.25 "	8.39 "
39	HAMILTON.....Arrive	8.34 "	10.55 "	2.14 "	6.00 "	5.35 "	8.47 "
		8.40 AM	11.00 "	2.20 PM	6.05 PM	5.40 PM	8.55 PM

GUELPH BRANCH.—GUELPH to HARRISBURG.

Miles.	STATIONS.	Accom.	Mixed.	Accom.
	GUELPH.....depart.	7.40 A.M.	1.45 P.M.	4.50 P.M.
8	Hespeler.....	8.00 "	2.15 "	5.10 "
11 ¹ / ₂	Preston.....	8.10 "	2.30 "	5.20 "
15 ¹ / ₂	Galt.....	8.20 "	2.45 "	5.30 "
21 ¹ / ₂	Branchton.....	8.37 "	3.05 "	5.47 "
27 ¹ / ₂	HARRISBURG.....arrive.	8.55 "	3.30 "	6.05 "

Miles

17
26
31
45
51
60
68
73
79
84
89
95
99
109
119
129
133
138
142
147
150
157
160
170
174
179
185
197
202
206
212
217
219
229

* 1

Miles

1
4
7
13
17
25
32
37
43

Miles

6
12
16
19
27

GREAT WESTERN RAILWAY.

Trains are run by Hamilton Time.

[Sept. 23rd

Sept. 23rd.

WINDSOR TO SUSPENSION BRIDGE.

Miles	STATIONS.	Accom.	Morn'g Expr'ss	Day Expr'ss	Mixed.	Night Mail.	Detroit Expr'ss
	WINDSOR..... Depart		4.00AM	11.20AM	8.25AM	7.20 PM	7.20 AM
17½	Belle River.....		4.35 "	12.00 "	9.55 "	7.57 "	7.50 "
26	Stoney Point.....			12.20PM	10.23 "		
31	Baptiste Creek.....			12.30 "	10.37 "	8.27 "	8.20 "
45½	CHATHAM.....		5.35 "	1.03 "	11.30 "	9.00 "	8.55 "
54½	Lewisville.....				12.10 PM		
60½	Phamesville.....		6.10 "	1.35 "	12.40 "	9.35 "	9.30 "
68	Bothwell.....		6.25 "	1.55 "	1.20 "	9.50 "	9.50 "
73½	Newbury.....		6.15 "	2.07 "	1.45 "	10.00 "	10.00 "
79½	Glencoe.....		6.50 "	2.20 "	2.40 "		10.15 "
84	Appin.....				3.00 "		10.25 "
89	Longwood.....		7.12 "	2.45 "	3.25 "	10.35 "	10.35 "
95	Mount Brydges.....		7.25 "	3.00 "	3.50 "		10.50 "
99½	Komoka.....		7.35 "	3.10 "	4.10 "	10.57 "	11.00 "
100½	LONDON. } Arrive		8.00 "	3.25 "	5.20PM	11.20 "	11.25 "
	} Depart	6.00AM	8.15 "	3.50 "		11.30 "	11.45 "
119½	Dorchester.....	6.30 "	8.35 "	4.10 "		11.50 "	12.05 PM
129	Ingersoll.....	7.00 "	8.55 "	4.32 "		12.08 AM	12.25 "
133	Beachville.....	7.15 "		4.45 "			
138	Woodstock.....	7.30 "	9.15 "	5.03 "		12.30 "	12.45 "
142½	Eastwood.....	7.45 "		5.15 "			
147½	Arnolds.....	8.00 "		5.30 "			
150	Princeton.....	8.08 "	9.42 "	5.35 "		12.55 "	1.10 "
157	PARIS.....	8.33 "	10.00 "	5.55 "		1.10 "	1.25 "
166½	HARRISBURG.....	9.05 "	10.20 "	6.20 "	3.50 PM	1.32 "	1.45 "
170	Lynden.....	9.18 "		6.30 "	4.05 "		
174	Copetown.....	9.35 "	10.37 "	6.45 "	4.25 "	1.50 "	2.00 "
179½	Dundas.....	10.10 "	10.50 "	6.57 "	4.50 "		2.10 "
185½	HAMILTON } Arrive	10.40AM	11.10 "	7.20 "	5.25 PM	2.20 "	2.30 "
	} Depart		11.20 "	7.30 "		2.30 "	2.40 "
197½	Ontario.....			8.00 "			3.05 "
202½	Grimsbey.....		11.55 "	8.15 "		3.05 "	3.15 "
206½	Beamsville.....			8.25 "			3.25 "
212	Jordan.....			8.40 "			
217½	St. Catharines.....		12.25 PM	8.55 "		2.40 "	3.50 "
219½	Thorold.....		12.30 "	9.00 "		3.45 "	3.55 "
229	SUSPENSION BRIDGE..... Arrive		12.55 PM	9.25 PM		4.15 AM	4.20 PM

* Daily, Sundays and Saturdays excepted.

TORONTO BRANCH.—HAMILTON TO TORONTO.

Miles	STATIONS.	Mixed.	Mail.	Accom.	Expr'ss	Accom.	Accom.
	HAMILTON..... Depart	7.00 AM	8.50 AM	11.30 AM	3.05 PM	4.45 PM	7.25 PM
1½	Toronto Junction.....	7.05 "	8.55 "	11.35 "	3.10 "	4.51 "	7.30 "
4	Waterdown.....	7.14 "		11.42 "		4.57 "	7.37 "
7	Wellington Square.....	7.26 "	9.12 "	11.52 "	3.25 "	5.05 "	7.45 "
13½	Bronte.....	7.50 "		12.05 "	3.40 "		8.05 "
17½	Oakville.....	8.22 "	9.35 "	12.17 "	3.53 "		8.15 "
25½	Port Credit.....	9.00 "	9.55 "	12.42 "	4.14 "		8.40 "
32	Mimico.....	9.30 "		12.57 "	4.40 "		9.00 "
37½	Grand Junction.....	9.55 "	10.30 "	1.10 "	4.45 "		9.15 "
39	TORONTO, (Union Station) Arrive	10.00 "	10.35 "	1.20 "	4.50 "		9.20 "
	(Yonge St. Station) "	10.05 "	10.40 "	1.25 PM	4.55 "	W. Square Accom.	9.25 "

GUELPH BRANCH.—HARRISBURG to GUELPH.

Miles	STATIONS.	Mixed.	Accom.	Accom.
	HARRISBURG..... depart	9.10 A.M.	10.25 A.M.	7.55 P.M.
6	Branchton.....	9.40 "	10.45 "	8.15 "
12	Galt.....	10.00 "	11.00 "	8.30 "
16	Preston.....	10.15 "	11.10 "	8.40 "
19½	Hespeler.....	10.30 "	11.20 "	8.50 "
27½	GUELPH..... arrive	11.10 "	11.40 "	9.10 "

* Night Mail.
PM 12.20 AM
12.40 "
12.45 "
1.20 "
2.05 "
2.20 "
2.57 "
3.35 "
3.50 "
4.15 "
4.35 "
5.15 "
5.25 "
5.45 "
6.07 "
6.25 "
6.37 "
6.50 "
7.07 "
7.45 "
8.20 "
8.50 "
9.30 AM

pte l.

Mixed.
3.20 PM
3.25 "
3.30 "
3.50 "
4.15 "
4.42 "
4.55 "
5.28 "
5.39 "
5.47 "
5.55 PM

m.

P.M.
" "
" "
" "
" "

GREAT WESTERN RAILWAY.

Sept. 23rd.

Sarnia Branch.—London to Sarnia.					Sarnia Branch.—Sarnia to London.				
Miles.	STATIONS.	Acc'n.		Exp.	Miles.	STATIONS.	Exp.		Acc'n.
		A. M.	P. M.				A. M.	P. M.	
	LONDON.....depart	6.40	4.00			SARNIA.....depart	7.50	3.15	
10	Komoka.....	7.15	4.40		9 ³ / ₄	Mandaumin.....	8.15	3.45	
20 ¹ / ₂	Strathroy.....	8.30	5.20		14 ¹ / ₂	Petrolia Junction.....	8.28	4.02	
26 ¹ / ₂	Kerwood.....	8.55	5.45		15 ¹ / ₂	Wyoming.....	8.33	4.67	
33	Watford.....	9.25	6.10		19 ¹ / ₂	Wanstead.....	8.48	4.18	
41 ¹ / ₂	Wanstead.....	9.52	6.37		27 ¹ / ₂	Watford.....	9.20	4.40	
45 ¹ / ₂	Wyoming.....	10.15	6.55		34 ¹ / ₂	Kerwood.....	9.40	5.02	
46 ¹ / ₂	Petrolia Junction.....	10.20	7.00		40 ³ / ₄	Strathroy.....	10.00	5.25	
51 ¹ / ₂	Mandaumin.....	10.35	7.13		51	Komoka.....	10.40	6.05	
61	SARNIA.....arrive	11.05	7.40		61	LONDON.....arrive	11.40	7.00	

Petrolia Branch.—Going North.					Petrolia Branch.—Going South.						
Miles.	STATIONS.	A.M.		P.M.		Miles.	STATIONS.	A.M.		P.M.	
4 ³ / ₄	Petrolia..dep	7.50	9.25	3.15	6.00	4 ³ / ₄	Wyoming..de	8.40	10.30	4.15	7.10
5 ¹ / ₂	Petrolia Junc	8.15	9.00	3.40	6.20	5 ¹ / ₂	PetroliaJunc	8.45	10.35	4.20	7.15
	Wyoming arr	8.20	9.05	3.45	6.30		Petrolia...arr	9.10	11.00	4.40	7.40

NEW BRUNSWICK & CANADA RAILWAY.

July 16th.

St. Andrews to Woodstock Road.				Woodstock Road to St. Andrews.			
Miles	STATION	Passenger		Miles	STATIONS.	Passenger	
	ST. ANDREWS.....Dep	9.00	A.M.		RICHMOND.....De	9.00	A.M.
5	Chamcook.....	9.25	"	2	McKenzie.....	9.13	"
11	Bartlett's.....	9.55	"	7	Debeck's.....	9.25	"
13	Wawieg.....	10.05	"	8	Wickham.....	9.37	"
15	Roix Road.....	10.15	"	13	Eel River.....	10.07	"
19	Hewitt's.....	10.35	"	22	Canterbury.. }	10.47	"
20	Rolling Dam.....	10.40	"	22	Canterbury.. }	11.02	"
24	Dumbarton }	11.00	"	29	Deer Lake.....	11.25	"
29	Dumbarton }	11.09	"	43	Maudslay }	12.47	P. M.
29	Lawrence's.....	11.29	"	51	Maudslay }	1.00	"
34	Barber Dam.....	12.09	P. M.	51	Toby Guzzle.....	1.23	"
38	Toby Guzzle.....	12.25	"	54	Barber Dam.....	2.04	"
45	Maudslay }	12.53	"	59	Lawrence's.....	2.24	"
45	Maudslay }	1.00	"	64	Lawrence's.....	2.24	"
59	Deer Lake.....	2.06	"	64	Dumbarton.. }	2.50	"
65	Deer Lake.....	2.06	"	68	Dumbarton.. }	3.00	"
65	Canterbury.. }	2.11	"	68	Rolling Dam.....	3.20	"
65	Canterbury.. }	2.35	"	69	Hewitt's.....	3.25	"
75	Eel River.....	3.30	"	73	Roix Road.....	3.45	"
80	Wickham.....	3.50	"	75	Waweig.....	3.55	"
83	Debeck's.....	4.00	"	77	Bartlett's.....	4.05	"
86	McKenzie.....	4.15	"	83	Chamcook.....	4.35	"
88	RICHMOND.....Ar	4.30	P. M.	88	ST. ANDREWS.....Arr	5.00	P. M.

These Trains leave St. Andrews for Richmond every Monday, Wednesday and Friday, and St. Stephens for Richmond every Tuesday, Thursday, and Saturday. Returning, will leave Richmond for St. Andrews every Tuesday, Thursday and Saturday, and for St. Stephens every Monday, Wednesday, and Friday.

An Express Train leaves St. Andrews every Saturday at 5.00 P. M. Returning, leave Richmond every Monday at 2.30 A. M., in time for Boat for Boston same day.

HENRY OSBURN, *Manager*, St. Andrews, N. B.

Miles
4
11
17
23
N

0

ROU

Miles
4
11
14
27
42
54
66
74
80
90
101
118
C
M
C
M
M
E
I
E
M
C

EU

Miles
3
6
7
9
12
17
22
26
27
31
33
39
44
47
51
55
56
61
66
72
76
79
89
91
95
102
106
108
St.
Mc
To
Ap
Ro
Qu
Na
Os
Pa
Bl
At
No
Ap
Su
Pl
Pe
Du
Po
An
Pe
Pol
Sal
Bo
Mo
Hu
Co
Do
Sh
Poi

NEW YORK CENTRAL RAILWAY.

Trains are run by Albany Time.

[June 3d.]

Buffalo to Niagara Falls.

Niagara Falls to Buffalo.

Sept. 23rd.

o London.

Exp.	Acc'n.
A. M.	P. M.
7.0	3 15
8.15	3.45
8.28	4.02
8.33	4.07
8.48	4.18
9.20	4.40
9.40	5.02
0 00	5.25
0.40	6.05
1.40	7 00

Miles	STATIONS.	Exps.	Exps.	Exps.	Miles	STATIONS.	Exps.	Exps.	Exps.
	BUFFALODep	A.M. 9.00	P.M. 12.10	P.M. 6.30		NIAGARA FALLS d	A.M. 11.08	P.M. 2.20	P.M. 6.30
	Ferry	9.06	12.18	6.40	5	La Salle.....	11.22	2.35	6.45
4	Black Rock	9.12	12.23	6.45	11	Tonawanda.....	11.35	2.50	7.00
11	Tonawanda.....	9.25	12.37	7.00	18	Black Rock	11.48	3.00	7.15
17	La Salle.....	9.38	1.25	7.15		Ferry	11.54	3.10	7.20
22	NIAGARA FALLS a	9.50	1.05	7.30	22	BUFFALO	12.00	3.20	7.30
		A.M.	P.M.	P.M.			A.M.	P.M.	P.M.

W. W. Chittenden, Gen. Supt., Buffalo, N. Y.

OGDENSBURG & LAKE CHAMPLAIN RAILWAY.

Trains are run by Boston Time.

[May 14th.]

ROUSE'S POINT to OGDENSB'GH.

OGDENSB'GH to ROUSE'S POINT.

g South.

P.M.	P.M.
4 15	7.10
4.20	7.15
4.4	7.40

Miles	STATIONS.	Exp's.	Mail.	Miles	STATIONS.	Exp's.	Mail.
	ROUSE'S POINT de.....	A. M. 7.15	P. M. 12.10		OGDENSBURGH de.....	A. M. 5.30	A. M. 11.30
4	Champlain.....	7.28	12.20	17	Madrid.....	6.10	12.15
11	Mooers.....	7.48	12.35	28	Potsdam.....	6.26	12.34
14	Centerville.....	7.58	12.43	38	Brusher Falls.....	6.50	1.03
27	Ellenburgh.....	8.42	1 17	44	Lawrence.....	7.03	1.21
42	Chateaugay.....	9.25	1.55	52	Brush's Mills.....	7.25	1.50
54	Malone.....	10.00	2.45	64	Malone.....	8.10	2.40
66	Brush's Mills.....	10.35	3.20	76	Chateaugay.....	8.40	3.15
74	Lawrence.....	10.58	3.42	91	Ellenburgh.....	9.26	4.03
80	Brusher Falls.....	11.13	3.55	104	Centerville.....	10.03	4.45
90	Potsdam.....	11.43	4.25	107	Mooers.....	10.10	4.54
101	Madrid.....	12.10	4.50	114	Champlain.....	10.25	5.15
118	OGDENSBURGH ar.....	12.50	5.30	118	ROUSE'S POINT ar.....	10.35	5.30
		P. M.	P. M.			A.M.	P.M.

D. W. C. Brown, General Superintendent, Malone, N. Y.

EUROPEAN & NORTH AMERICAN RAILWAY.

NEW BRUNSWICK.

May 1st.

ST. JOHN to SHEDIAC.

SHEDIAC to ST. JOHN

Passenger

9 00	A. M.
9.13	"
9.25	"
9.37	"
0.07	"
0.47	"
1.02	"
1.25	"
2.47	P. M.
1.00	"
1.23	"
2.04	"
2.24	"
2.50	"
3.00	"
3.20	"
3.25	"
3.45	"
3.55	"
3.05	"
3.35	"
3.00	P. M.
day and	
aturday	
day and	
g, leave	
N. B.	

Miles	STATIONS.	Express	Accommoda'n.	Accommoda'n.	Miles	STATIONS.	Accommoda'n.	Express	Accommoda'n.
	St. John.....	7.00AM.	2.00PM.	5.30PM.	1	Point du Chene.....	7.45AM.	11.45AM.	
3	Moose Path.....	7.08 "	2.10 "	5.40 "	2	Shediac.....	8.00 "	12.30PM.	
6	Torryburn.....	7.14 "	2.18 "	5.48 "	4	Dorchester Road.....		12.42 "	
7	Appleby's.....	7.18 "	2.23 "	5.53 "	15	Cook's Brook.....	8.26 "	1.02 "	
9	Rothsay.....	7.23 "	2.30 "	6.00 "	17	Humphrey's Mills.....		1.14 "	
12	Quispamsis.....	7.32 "	2.42 "	6.12 "	19	Moncton.....	8.45 "	1.45 "	
17	Nauwigewauk.....	7.45 "	3.00 "	6.35 "	26	Boundary Creek.....	9.09 "	2.19 "	
22	Ossekeag.....	8.00 "	3.30 "	7.05 "	32	Salisbury.....	9.17 "	2.35 "	
26	Passekeag.....	8.12 "	3.45 "	7.22 "	37	Pollet River Road.....	9.29 "	2.52 "	
27	Bloomfield.....	8.16 "	3.50 "	7.28 "	42	Petitcodiac.....	9.42 "	3.10 "	
31	Athol.....		4.02 "	7.41 "	48	Anagance.....	10.05 "	3.30 "	
33	Norton.....	8.29 "	4.07 "	7.47 "	52	Portage.....		3.45 "	
39	Apoahqui.....	8.47 "	4.30 "	8.12PM.	53	Dunsinane.....	10.19 "	3.51 "	
44	Sussex.....	9.20 "	5.05 "	8.30PM.	57	Penopsquis.....	10.28 "	4.04 "	
47	Plumweseep.....		5.16 "		61	Plumweseep.....		4.19 "	
51	Penopsquis.....	9.37 "	5.32 "		62	Sussex.....	6.30AM.	11.00 "	4.50 "
55	Dunsinane.....	9.46 "	5.45 "		69	Apoahqui.....	6.48 "	11.13 "	5.06 "
56	Portage.....		5.51 "		75	Norton.....	7.13 "	11.31 "	5.29 "
61	Anagance.....	10.00 "	6.05 "		77	Athol.....	7.19 "		5.35 "
66	Petitcodiac.....	10.14 "	6.25 "		81	Bloomfield.....	7.32 "	11.44 "	5.47 "
72	Pollet River Road.....	10.26 "	6.44 "		82	Passekeag.....	7.38 "	11.48 "	5.52 "
76	Salisbury.....	10.38 "	7.04 "		86	Ossekeag.....	8.05 "	12.00 "	6.15 "
79	Boundary Creek.....	10.46 "	7.16 "		91	Nauwigewauk.....	8.25 "	12.15 "	6.33 "
89	Moncton.....	11.15 "	8.10 "		96	Quispamsis.....	8.44 "	12.29 "	6.50 "
91	Humphrey's Mills.....		8.16 "		99	Rothsay.....	8.56 "	12.38 "	7.00 "
95	Cook's Brook.....	11 30 "	8.28 "		101	Appleby's.....	9.04 "	12.43 "	7.08 "
02	Dorchester Road.....		8.48 "		102	Torryburn.....	9.10 "	12.47 "	7.15 "
06	Shediac.....	12.20 "	9.00PM.		105	Moose Path.....	9.19 "	12.53 "	7.23 "
08	Point du Chene.....	12.25 PM.			108	St. John.....	9.30AM.	1.00PM.	7.35PM.

J. EDWARD BOYD, Superintendent, St. John, N.B.

MICHIGAN CENTRAL RAILWAY. DETROIT TO CHICAGO.

[Aug. 18th]

Miles	STATIONS.	Mail. P.	Day Express. P.	Evening Express, A. P.	Night Express. B. P.	Dexter Accomoda ⁿ M. P.
	DETROIT.....	6.00 A.M.	9.40 A.M.	5.35 P.M.	10.30 P.M.	4.20 P.M.
3	G. T. Junction.....	6.15 "	9.55 "	5.50 "	10.45 "	4.40 "
10	Dearborn.....	6.35 "				5.00 "
17	Wayne.....	6.55 "				5.20 "
29	Ypsilanti.....	7.25 "	10.55 "	6.55 "	11.50 "	5.55 "
37	Ann Arbor.....	7.55 "	11.15 "	7.20 "	12.10 A.M.	6.20 "
47	Dexter.....	8.25 "	11.35 "			6.50 P.M.
54	Chelsea.....	8.45 "		8.05 "	12.57 "	
65	Grass Lake.....	9.15 "		8.35 "		
76	Jackson.....	9.45 "	12.35 P.M.	9.05 "	1.50 "	
86	Parma.....	10.15 "		9.35 "	2.20 "	
96	Albion.....	10.40 "	1.15 "	10.00 "	2.40 "	
107	Marshall.....	11.25 "	2.00 "	10.30 "	3.10 "	
120	Bat. Creek.....	12.00 P.M.	2.30 "	11.10 "	3.40 "	
134	Galesburg.....	12.35 "		11.55 "	4.15 "	
143	Kalamazoo.....	1.00 "	3.25 "	12.20 A.M.	4.40 "	
159	Lawton.....	1.45 "		1.00 "	5.25 "	
167	Decatur.....	2.25 "		1.20 "	5.45 "	
178	Dowagiac.....	2.42 "			6.13 "	
191	Niles.....	3.15 "	5.10 "		6.40 "	
197	Buchanan.....	3.32 "			7.18 "	
201	Dayton.....	3.43 "				
218	New Buffalo.....	4.23 "				
228	Michigan City.....	4.50 "	6.50 "	4.05 "	8.35 "	
240	Porter.....	5.20 "				
248	Lake, <i>Jol. Cut-off</i>	5.40 "	7.35 "	4.55 "	9.32 "	
269	Calumet, <i>I. C. Junc.</i>	6.30 "	8.20 "	5.45 "	10.20 "	
284	CHICAGO..... Arr	7.10 P.M.	9.00 P.M.	6.30 A.M.	11.00 A.M.	

Refreshment Rooms at Detroit, Ann Arbor, Marshall, Niles, Lake, and Chicago.
M daily, except Saturday. P daily, except Sundays. A on Saturday—this train runs only to Jackson. B On Monday will run only from Miles.

STAGES LEAVE STATIONS AS UNDER.

WAYNE—For Plymouth and Northville, daily to and from.
 YPSILANTI—For Saline daily at 12.30 P.M., returning from there at 9 A.M.
 ANN ARBOR—Via Whitmore Lake and Hamburg, to and from Howell.
 DEXTER—On Mondays, Wednesdays and Fridays, for Madilla, Williamsville, Stockbridge, Danville and Mason; returning Tuesday, Thursday, and Saturdays. Also, daily to and from Pinckney and Howell.
 JACKSON—See time-table for Trains and Stages to Mason, Charlotte, Eaton Rapids, Lansing, &c. Stages also run to and from Jonesville and Concord.
 ALBION—Each afternoon for Homer, Clarendon, and Jonesville, returning next morning.
 MARSHALL—Daily from and to Charlotte, Olivet, Kalamazoo, Bellevue, Coldwater and Tecumseh.
 R. N. Rice, General Superintendent, Detroit, Michigan.

INTERNATIONAL STEAMSHIP COMPANY

BETWEEN BOSTON, PORTLAND, AND ST. JOHN, N.B.

The Steamers of the above Company leave St. John, N.B. for Boston and Portland on Mondays and Thursdays.

Steamers leave Boston Mondays and Thursdays for St. John N.B.; leaving Portland for St. John same evening at 5.00 P.M.

T. C. HERSEY, President, Portland. | J. B. COYLE, Gen. Agent, Portland.
 H. J. LIBBY, Treasurer, do. | W. H. KILBY, Agent, Boston.
 C. C. Eaton, Agent, Portland.

WELLAND RAILWAY.

Trains are run by Hamilton Time.

[May 16th.]

Port Dalhousie to Buffalo.				Buffalo to Port Dalhousie.			
Miles	STATIONS.	Passeng'r	Passeng'r	Miles	STATIONS.	Passeng'r	Passeng'r
	Port Dalhousie...Dep	8.00 A.M.	3.00 P.M.		Buffalo.....Dep	6.50 A.M.	3.30 P.M.
	St. Catherines.....	8.20 "	3.20 "		Port Colborne.....	11.40 "	5.35 "
	Thorold.....	8.45 "	3.45 "		Welland.....	12.00 "	5.55 "
	Allanburgh.....	8.55 "	3.55 "		Port Robinson.....	12.12 P.M.	6.07 "
	Port Robinson.....	9.03 "	4.03 "		Allanburgh.....	12.20 "	6.15 "
	Welland.....	9.15 "	4.15 "		Thorold.....	12.30 "	6.25 "
	Port Colborne.....	9.45 "	4.45 "		St. Catherines.....	12.50 "	6.45 "
	Buffalo..... Arr	12.15 P.M.	10.23 P.M.		Port Dalhousie...Arr	1.10 P.M.	7.10 P.M.

* Flag Stations. J. G. McGrath, General Manager, St. Catherines, C. W.

Miles
15
36
44
56
66
83
87
93
106
117
125
141
150
164
177
188
198
208
219
230
237
247
255
267
274
281
284

N
runt
BA
Clim
KA
at 1
LA
DE
South
Thre
DO
Elkh
NI
NE
MI

Th
every
Ch
W

PO.

Miles
B
H
M
M

MICHIGAN CENTRAL RAILWAY.
CHICAGO TO DETROIT.

[Aug. 18th

Miles	STATIONS.	Day Express. P.	Mail. P.	Evening Express. C. N.	Night Express. M. & P.	Dexter Accom'n. P.
	CHICAGO.....	7.00 A.M.	4.30 A.M.	4.15 P.M.	9.40 P.M.	
15	Calumet, <i>I. C. June</i>	7.40 "	5.10 "	4.55 "	10.20 "	
36	Lake, <i>Jol. Cut-off</i>	8.23 "	5.57 "	5.40 "	11.19 "	
44	Porter.....	8.40 "	6.15 "	5.55 "		
56	Michigan City.....	9.10 "	7.00 "	6.25 "	12.00 "	
66	New Buffalo.....	9.30 "	7.25 "			
83	Dayton.....		8.10 "			
87	Buchanan.....		8.22 "			
93	Niles.....	10.30 "	8.42 "	8.05 "	1.50 A.M.	
106	Dowagiac.....	10.58 "	9.12 "	8.33 "	2.25 "	
117	Decatur.....	11.25 "	9.40 "	8.58 "		
125	Lawton.....	11.40 "	10.00 "	9.15 "		
141	Kalamazoo.....	12.18 P.M.	10.45 "	9.55 "	3.50 "	
150	Galesburg.....		11.10 "	10.15 "	4.15 "	
164	Bat. Creek.....	1.05 "	11.50 "	10.45 "	4.50 "	
177	Marshall.....	1.55 "	12.25 P.M.	11.12 "	5.25 "	
188	Albion.....	2.20 "	1.05 "	11.35 "	5.55 "	
198	Parma.....		1.35 "		6.20 "	
208	Jackson.....	3.05 "	2.05 "	12.15 A.M.	6.50 "	4.35 A.M.
219	Grass Lake.....		2.27 "	12.35 "	7.15 "	5.05 "
230	Chelsea.....		3.07 "	12.57 "	7.40 "	5.35 "
237	Dexter.....		3.25 "		7.55 "	5.55 "
247	Ann Arbor.....	4.33 "	3.55 "	1.30 "	8.20 "	6.25 "
255	Ypsilanti.....	4.55 "	4.20 "	1.50 "	8.40 "	6.50 "
267	Wayne.....	5.20 "	4.50 "			7.25 "
274	Dearborn.....		5.15 "			7.45 "
281	G. T. June.....	5.50 "	5.30 "	2.45 "	9.45 "	8.05 "
284	DETROIT..... Arr	6.10 P.M.	5.45 P.M.	3.00 A.M.	10.00 A.M.	8.20 A.M.

Refreshment Rooms at Detroit, Ann Arbor, Marshall, Niles, Lake, and Chicago.
N daily. M daily, except Saturdays. P daily, except Sundays. C on Saturday will run to Niles only.

STAGES LEAVE STATIONS AS UNDER.

BATTLE CREEK—To Hastings daily at 2 P.M., from there at 7 A.M., and to and from Climax Prairie, Tuesdays and Fridays; to Charlotte, Wednesdays and back Tuesdays.

KALAMAZOO—Daily to Three Rivers, Grand Rapids, and Allegau at 7 A.M., to Hastings at 1 P.M., Mondays, Wednesdays and Fridays.

LAWTON—Thrice daily between Depot and Paw Paw.

DECATUR—Daily to and from Lawrence, and from Lawrence to and from St. Joseph and South Haven. Milbury Stages arrives at Decatur on Fridays and leaves on Saturdays. Three Rivers Stage leaves Decatur Friday A.M., and returns Saturday.

DOWAGIAC—Each morning via Cassapolis and Edwardsburgh for Elkhart, and from Elkhart every morning via Edwardsburgh and Cassapolis, reaching Dowagiac about 5 P.M.

NILES—Daily to and from South Bend, St. Joseph and Berrein.

NEW BUFFALO—To Laketon on Tuesdays, and back on Wednesdays.

MICHIGAN CITY—Daily to Laporte at 8 A.M., and from Laporte at 3 P.M.

W. K. Muir, Asst. Gen. Supt., Detroit, Michigan.

PORTLAND STEAM PACKET COMPANY

BETWEEN PORTLAND AND BOSTON.

The Steamers of the above Company leave Atlantic Wharf, Portland, for Boston every evening (Sundays excepted) at 7 o'clock. Leave Boston the same days at P.M.

CABIN FARE.....\$1.50 — DECK FARE.....\$1.00.

CHARLES FORBES, President, Portland. | J. B. COYLE, General Director, Portland.

Wm. KIMBALL, Treasurer, do. | L. BILLINGS, Agent, do.

WILLIAM WEEKS, Agent, Boston.

PORTLAND and OXFORD CENTRAL RAILWAY.

Trains are run by Portland Time.

[Jan. 6th.

Sumner to Mechanic Falls.			Mechanic Falls to Sumner.		
Miles	STATIONS.	Mail.	Miles	STATIONS.	Mail.
	SUMNER.....	Depart 10.00 A.M.		MECHANIC FALLS.....	Depart 3.30 P.M.
	Buckfield.....	10.20 "		Minot.....	3.45 "
	Hebron.....	10.40 "		Hebron.....	4.05 "
	Minot.....	11.00 "		Buckfield.....	4.20 "
	MECHANIC FALLS.....	Arrive 11.15 A.M.		SUMNER.....	Arrive 4.40 P.M.

* Flag Stations.

F. W. Pelton, President, Boston.

[Aug. 18th
Dexter
Accomoda'n
M. P.
4.20 P.M.
4.40 "
5.00 "
5.20 "
5.55 "
6.20 "
6.50 P.M.
go.
rain runs
Stock-
daily to
Rapids,
morning.
ater and
igan.
B.
ortland
ortland
nd.
ay 16th.
esseng'r
30 P.M.
35 "
55 "
07 "
15 "
25 "
45 "
10 P.M.
W.

MONTREAL AND BOSTON.

Via Grand Trunk, Vermont Central, Northern (N. H.), Concord Manchester & Lawrence, and Boston & Lowell Railways. [Sept., 1867.]

MONTREAL TO BOSTON.				BOSTON TO MONTREAL.			
Miles	STATIONS.	Express.	Express.	Miles	STATIONS.	Express.	Express.
	MONTREAL...Dep	8.40 A. M.	3.30 P. M.		BOSTON.....Dep	8.00 A. M.	5.00 P. M.
27	St. Johns.....	10.00 "	4.50 "	40	Nashua.....	9.24 "	6.30 "
70	St. Albans.....	11.45 "	6.45 "	75	Concord.....	10.30 "	8.15 "
94	Essex Junct.....	1.05 P. M.	8.40 "	144	White R'r Junc....	1.05 P. M.	11.35 "
190	White R'r Junc....	5.10 "	*1.15 A. M.	240	Essex Junct.....	5.05 "	4.45 A. M.
259	Concord.....	7.50 "	5.25 "	264	St. Albans.....	6.15 "	6.10 "
294	Nashua.....	9.00 "	6.55 "	307½	St. Johns.....	8.00 "	8.05 "
334½	BOSTON.....Arr	10.30 P. M.	8 30 A. M.	334½	MONTREAL...Arr	9.25 P. M.	9.25 A. M.

*Mondays at 6.45 A.M. instead of 1.15.

C. J. Brydges, Managing Director, Grand Trunk Railway, Montreal.
 Hon. J. G. Smith, President, Vermont Central Railway, St. Albans.
 O. Stearns, Supt. Northern (N. H.) Railway, Concord, N. H.
 J. R. Kendrick, Supt., Concord, Manchester & Lawrence Ry., Concord.
 John B. Winslow, Supt., Boston & Lowell Railway, Boston, Mass.

MONTREAL AND NEW YORK.

Via Grand Trunk, Vermont Central, Conn. River, New Haven, Hartford and Springfield, and New York and New Haven Railroads. [Sept. 1867]

MONTREAL TO NEW YORK.				NEW YORK TO MONTREAL.			
Miles	STATIONS.	Express.		Miles	STATIONS.	Express.	Express.
	MONTREAL... De	3.30 P. M.			N. Y., 27th St... De	8.00 A. M.	8.00 P. M.
27	St. Johns.....	4.50 "		42½	" 42nd St... De	8.08 "	8.08 "
70	St. Albans.....	7.25 "		45	Norwalk.....	9.42 "	9.49 "
94	Essex Junction....	8.40 "		76	New Haven.....	10.55 "	11.15 "
128	Montpelier ".....	10.17 "		138	Springfield.....	1.10 P. M.	1.40 A. M.
190	White River ".....	1.25 A. M.			{ De	2.00 "	7.50 "
230	Bellows Falls.....	3.37 "		223	Bellows Falls... { Ar	5.40 "	11.35 "
315	Springfield..... { Ar	6.27 "			{ De	10.00 "	11.45 "
377	New Haven.....	9.45 "		263	White River Junc..	11.55 "	2 05 P. M.
408	Norwalk.....	10.58 "		325	Montpelier.....	2.52 A. M.	4.52 "
450	N. Y., 42nd St... Ar	12.37 P. M.		359	Essex.....	4.45 "	6.25 "
453	" 27th St... Ar	12.45 "		383	St. Albans.....	6.10 "	7.50 "
				426	St. Johns.....	8.05 "	9.35 "
				453	MONTREAL... Arr	9.25 "	10.55 "

C. J. Brydges, Managing Director, Grand Trunk Railway, Montreal.
 Hon. J. G. Smith, President Vermont Central Railway, St. Albans, Vt.
 D. L. Harris, President, Conn. River Railway, Springfield.
 E. M. Reed, Supt., New Haven, Hartford and Springfield Railway, Hartford.
 J. H. Hoyt, Supt., New York and New Haven Railway, New York.

MONTREAL COFFEE

AND SPICE STEAM MILLS,

102 King Street, Montreal.

S. H. & A. S. EWING, PROPRIETORS,

General Assortment of Roasted and Green Coffees, Spices, Mustard, Cream Tartar, Nutmegs, &c., &c. Coffees Roasted, and all kinds of Spices ground for the trade.

S. H. & A. S. EWING.

CABINETMAKER.

G. ARMSTRONG,

CABINET-MAKER,

Furniture Warerooms on corner of Victoria Square and Craig Street, Montreal.

10.7

G A D P S

 1867

 Jan

 Feb.

 Mar.

 Aprl

 May.

 June

 Spring
 Summer
 Autumn
 Winter

GRAND TRUNK RAILWAY OF CANADA



AND



MONTREAL OCEAN STEAMSHIP COMPANY.

1867. WEEKLY LINE. 1867.

GREAT FREIGHT ROUTE

BETWEEN

EUROPE AND NORTH AMERICA.

The MONTREAL OCEAN STEAMSHIP COMPANY'S LINE of powerful Screw Steamers will, during the SUMMER, make

ONE TRIP WEEKLY BETWEEN LIVERPOOL & MONTREAL

There connecting with the GRAND TRUNK RAILWAY,

THUS FORMING THE

MOST DIRECT ROUTE TO AND FROM ENGLAND AND THE WESTERN STATES OF THE UNION.

ONLY TWO TRANSHIPMENTS

BETWEEN LIVERPOOL AND CHICAGO, OR CINCINNATI.

GOODS SENT THROUGH IN BOND.

The Agents in Liverpool sign Through Bills of Lading containing Through Rates of Freight, which include all expenses (Insurance and Wharfage Charges excepted) from the Ship's side to the Railroad Depots of the under-mentioned Cities.

Rates of Freight for Consignments of not less than 20 cubic feet, or 1,000 lbs.

FROM LIVERPOOL (Via Montreal)	DRY GOODS. @ 40 Cubic feet			HARDWARE. In Cses & Cskes @ 2000 lbs.			SAVINGS, CORNED, Files, Nails, Soda, Steel, Tin, Wire, and Zinc. @ 2000 lbs.			CROCKERY. @ 2000 lbs.		
	STG.	\$	c.	STG.	\$	c.	STG.	\$	c.	STG.	\$	c.
TO BUFFALO, NEW YORK... }	75s	18	25	95s	23	12	60s		60	55s	13	38
DETROIT, MICHIGAN.... }												
CHICAGO, ILLINOIS } MILWAUKEE, WIS } Rail.	92s4d	22	47	120s	29	30	85s	20	60	69s	16	80
CHICAGO IL.) MILW'KEE.) Lake WISCONSIN.) from) Supria) via) Savina) Line.	82s	19	95	110s	26	76	75s	18	25	59s	14	35
CINCINNATI, OHIO.....	92s4d	22	47	120s	29	30	85s	20	60	69s	16	80
ST. LOUIS, MISSOURI.....	118s6d	28	85	155s	37	72	102s	24	80	97s	23	60

No charge made for Customs or Bonding Charges at Montreal. The wharfage dues will be the only charge in addition to the through rate.

TH
Con
N. F
For
G
M
A
J
W
J
A
T
J
—
R.
H. &
F. C.
P. S.

NADA
BY
PANY.

CA.

Steamers

TREAL

ESTERN

NNATI.

igh Rates
Charges
ie under-

00 lbs.

OCKERY.

2000 lbs.

\$	c.
13	38
16	80
14	35
16	80
23	60

harfage

☞ Packages containing Goods in more than one class, will be charged the highest class, and the attention of Shippers and Importers is particularly called to the importance of describing contents of Packages in Bills of Lading, and inserting correct rates therein, as no alteration or correction can be made at the port of destination.

THE FIRST STEAMSHIP FOR MONTREAL LEAVES LIVERPOOL ON OR ABOUT 20TH APRIL.

TO ENGLISH SHIPPERS.

☞ Particular attention is again directed to the necessity of transmitting Bills of Lading and Invoices of Value of Goods, certified by nearest American Consul, by Mail (pre-paid) addressed to Mr. F. C. STRATTON, General Eastern Freight Agent of the Grand Trunk Railway, Montreal, many cases of delay having occurred for want of these papers, as the Goods cannot be forwarded until they are received.

TO UNITED STATES IMPORTERS.

Consignees in the United States are requested, immediately on receipt of Invoices of Goods, to have them attested before the Collectors of their respective Ports and forwarded to Mr. R. P. HORSMAN, Agent for Grand Trunk Railway, Port Huron, Mich. WHEN SHIPPED VIA SARNIA LINE THESE DOCUMENTS ARE NOT REQUIRED.

N. B.—Shippers will find it advantageous to forward Goods via SARNIA LINE as they will have Special Despatch by this Route.

Produce conveyed to Liverpool as cheap as by other routes.

For Rates and other information apply to

- GRAND TRUNK RAILWAY COMPANY'S OFFICE, 21 Old Broad Street, LONDON.
MONTGOMERIE & GREENHORN, Montreal Ocean Steamship Co.'s Office, LONDON.
ALLAN BROTHERS & Co., Weaver Buildings, Brunswick Street, LIVERPOOL.
JAMES & ALEXANDER ALLAN, No. 70 Great Clyde Street, GLASGOW.
W. THARP, Agent Grand Trunk Railway, DETROIT, Michigan.
J. WALSH, Agent Grand trunk Railway, CHICAGO, Illinois.
A. T. SPENCER, Agent Grand Trunk Railway, CHICAGO, Illinois.
TAYLOR & BROTHER, Agents Grand Trunk Railway, CINCINNATI, Ohio.
JOHN H. MUIR, Agent Grand Trunk Railway, MILWAUKEE, Wisconsin.
———, Agent Grand Trunk Railway, ST. LOUIS, Missouri.
R. CALVERT, Agent Grand Trunk Railway, BUFFALO

- H. & A. ALLAN, Agents,
Montreal Ocean Steamship Co'y, MONTREAL, C.E.
F. C. STRATTON, General Eastern Freight Agent,
Grand Trunk Railway Company, MONTREAL, C.E.
C. J. BRYDGES,
Managing Director,
Grand Trunk Railway.
P. S. STEVENSON, General Western Freight Agt.
Grand Trunk Railway Company, TORONTO, C.W.

HARDWARE.**ALFRED BROWN,**

Importer of all kinds of

METALS
and
HEAVY HARDWARE,

20 & 22

ST. SACRAMENT STREET,

MONTREAL.

9.7

MULHOLLAND & BAKER

Importers of all kinds of

IRON AND STEEL,

Heavy Hardware and Shelf Goods,

Montreal.

419 & 421 St. Paul Street.

Yard Entrance, St. Francois Xavier St.

10.7

FERRIER & CO.,**HARDWARE MERCHANTS,**

Wholesale Ware Rooms,

Entrance

No. 24 & 26 St. Francois Xavier Street,

Montreal.

10.7

FROTHINGHAM & WORKMAN,

(Established 1809,

Importers, Manufacturers and Wholesale

Dealers in

IRON, STEEL, TIN, ANCHORS, CHAINS,

AND

GENERAL HARDWARE,

Warehouse and Offices :

St. Paul Street, Montreal.

Manufactories : Cote St. Paul, near Montreal.

10.7

HARDWARE, &c.**JAS. WALKER & CO.,**

Importers of

British, American and German
HARDWARE,

House Furnishings, Cornices, &c.,

106 GREAT ST. JAMES STREET,
(Mechanics' Hall Buildings.)

10.7

Montreal.

PRINTERS & PUBLISHERS.**J. C. BECKET'S**

Steam

BOOK AND JOB PRINTING

Establishment,

No. 81 GREAT ST. JAMES STREET,

Montreal.

7.7

JAMES STARKE & CO.,

GENERAL PRINTERS,

No. 54 St. Francois Xavier Street,

Corner St. Sacramento Street,

MONTREAL

ALL KINDS OF

PLAIN & ORNAMENTAL PRINTING

Executed in the neatest style.

10.7

BOOK & JOB PRINTING

AND

BLANK ACCOUNT BOOKS.

Having made extensive additions to his
Premises in St. Nicholas Street, the under-
signed is enabled to undertake the execution
at the shortest notice and with utmost des-
patch, of

Every description of Printing,

From the largest Volumes to the briefest
Pamphlets, and from Mammoth Posters to
the smallest Jobs.

Particular attention given to the manufac-
ture of

All kinds of Blank Books,

for Banks, Merchants, Assurance Companies,
&c.**JOHN LOVELL,**

Printer and Blank Book Manufacturer.

18, 20 and 22 St. Nicholas Street,

Montreal.

10.7

MI

ALB

J. D

Opposite

ROB

W

L

C HA

CAN

UNIT

ADIR

R O I

L

SAB

The

tiful S

The

fall of

Tiek

Lake

B r

E

MERCHANT TAILORS.

ALBION CLOTH HALL,
 J. D. ANDERSON, Merchant Tailor,
 64 Great St. James Street, Montreal,
 [opposite the Bank of Upper Canada.]
 10.7

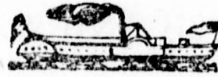
ROBERT SEATH,
 Wholesale Clothier and Importer,
 No. 10 St. Joseph Street, Montreal.
 10.7

WOODEN WARE, &c.

NELSON, WOOD & CO.,
 (Successors to Nelson & Butters.)
 Importers and Wholesale Dealers in European
 and American Fancy Goods, Paper Hangings,
 Clocks, Looking Glasses, and Looking Glass
 Plates, Manufacturers of Brooms, Wooden
 Ware and Matches,
 29 St. Peter Street, Montreal.
 H. A. Nelson. A. S. Wood. A. D. Nelson.
 10.7

LAKE CHAMPLAIN AND LAKE GEORGE.

THE ELEGANT STEAMERS OF THE
CHAMPLAIN TRANSPORTATION COMPANY



CANADA,	-	-	-	CAPT. WM. ANDERSON
UNITED STATES,	-	-	-	" J. C. BABBITT
ADIRONDAC (new)	-	-	-	" WM. H. FLAGG

Will form two Daily Lines between

ROUSE'S POINT - AND WHITEHALL,

Leaving Rouse's Point and making close connections at Whitehall with
 Trains for

SARATOGA, SCHENECTADY, TROY, ALBANY, AND NEWYORK.

The Morning Boat will make close connections at TICONDEROGA with the beautiful Steamer "Min-ne ha-ha," passing through LAKE GEORGE.

The splendid Scenery of Lake Champlain and Lake George no Tourist should fail of enjoying.

Tickets can be procured at the Offices of the Grand Trunk Railway, on board Lake Ontario Steamers, and at the Ticket Offices at Niagara Falls.

HIRAM TRACY,
General Supt.

Burlington, Vt., May, 1867.

JOHN H. STRATFORD & CO.,

(LATE LUBRIC OIL COMPANY,)

Dealers in

ELEPHANT, CRUDE, REFINED, AND LUBRIC OILS.

—Also—

OLIVE AND OTHER OILS.

ALL OILS PUT UP IN SUPERIOR PACKAGES.

BRANTFORD,

ONTARIO.

THE PEOPLE'S LINE STEAMERS

C. VANDERBILT

CAPTAIN THOS. D. CHRISTOPHER,

AND


DEAN RICHMOND

CAPTAIN E. F. CURTIS,

LEAVE ATHENS DAILY (EXCEPT SUNDAY), at 10 o'clock,
P.M., on arrival of Express Trains from the
NORTH AND WEST,

Reaching NEW YORK early next morning in time to
connect with Trains for

PHILADELPHIA, BALTIMORE & WASHINGTON

 *The Boats land in New York adjoining the ferry
which takes passengers to the South.*

THE STEAMERS

S T. J O H N

CAPTAIN W. H. CHRISTOPHER,

AND

D R E W

CAPTAIN S. J. RAE,

Also Leave ALBANY every evening (except Sunday),
at 7 o'clock, P. M., reaching NEW YORK
early next morning.

To

Fire-
the c
never fa

JAMES
H. S.
Manufa

TI

RAI

JAMES
Assuri

GEN
Assuri

Sol
Canadi

Geo. E
87

TORONTO.

TORONTO SAFE WORKS.



J. & J. TAYLOR,

TORONTO,
Manufacturers of

Fire- & Burglar-Proof Safes,
the only Safes for sale in Canada that
never fail to preserve their contents even in
the hottest fires.

AGENTS :

JAMES HUTTON & CO.,
15 St. Helen Street, Montreal.
H. S. SCOTT & CO.,
22 Buade Street, Quebec.

Manufactory - Palace Street, Toronto.

Send for a Price List.
4.7

PRESCOTT.

DANIELS' HOTEL,

(Late Campbell's)

PRESCOTT, C. W.

L. H. DANIELS, - - PROPRIETOR.

10.7

COBOURG, C. W.

THE PAUWELS HOUSE,

COBOURG, C. W.

House and Furniture entirely New.

E. PAUWELS, Proprietor.

12.7

HARTFORD.

TICKETS OF INSURANCE AGAINST ACCIDENTS!

RESULTING IN LOSS OF LIFE OR PERSONAL INJURY,

ISSUED BY THE

**RAILWAY PASSENGERS ASSURANCE COMPANY
OF HARTFORD, CONNECTICUT.**

Paid-up Capital, - - - - - \$304,800.

JAMES G. BATTERSON, President.

HENRY T. SPERRY, Secretary.

TRAVELERS RISK TICKETS, 10 cents per day,

Assuring \$3,000 in case of Death, or \$15 per week Indemnity during total
disability (not exceeding six months for any one accident.)

GENERAL ACCIDENT OF TRAVEL TICKETS, 20 cts. per day,

Assuring \$5,000 in case of Death, or \$25 per week Indemnity during total
disability (not exceeding six months for any one accident.)

Discount on Tickets for Twenty or Thirty Days.

Sold at the Ticket Offices of the Grand Trunk and other leading Lines of Railway in the
Canadas and United States.

Insurance commences at any Hour and extends one to thirty Days.

GRO. B. WRIGHT, Vice-President.

C. D. PALMER, General Agnt.

8 7

JUSTIN SNOW, General Ticket Agent.

lock,
ne to
ION
ferry)

HOTELS.

BROCKVILLE.—CAMPBELL'S HOTEL. J. B. Campbell, Proprietor.

BUFFALO.—BLOOMER'S HOTEL.
MANSION HOUSE.

DETROIT, MICH.—BIDDLE HOUSE. This excellent hotel has recently been enlarged and refurnished, and has capacity for accommodating 300 guests. A. B. Taber, Proprietor.

RUSSELL HOUSE, Woodward Avenue. A very commodious house, and centrally situated. It has recently been refitted and refurnished, and will accommodate over 500 guests. Witbeck & Chittenden, Proprietors.

GODERICH.—HURON HOTEL. J. J. Wright, Proprietor.

LUCKNOW.—WESTERN EXCHANGE HOTEL. A very commodious house, and centrally situated. It has recently been refitted and refurnished, and possesses all the requisites of a first-class house. Stages call daily. John McKenzie, Proprietor.

MONTREAL.—ST. LAWRENCE HALL, Great St. James Street—the largest and most convenient hotel in the city. Capable of accommodating over 500 people. Situated directly opposite the Post-Office. Within three minutes' walk of all the public buildings. Hogan & Co., Proprietors.

AMERICAN HOUSE, corner St. Henry and St. Joseph Streets. Porters always in attendance at the Depot and Steamboat Landings with Omnibuses to the House. C. S. Brown, Proprietor.

MORRISBURG.—INTERNATIONAL HOTEL. W. Kingston, Proprietor.

PORT COLBORNE.—HARDISON'S HOTEL. J. Hardison, Proprietor.

PORT HOPE.—HASTING'S HOTEL. J. Hastings, Proprietor.

QUEBEC.—RUSSELL'S HOTEL, }
ST. LOUIS HOTEL, } W. H. Russell & Sons, Proprietors.

RICHMOND.—RAILROAD HOTEL. N. Noel, Proprietor.

RIVIERE-DU-LOUP.—G. T. R. HOUSE. Nazaire Marchand, Proprietor.

ROUSE'S POINT.—MASSACHUSETTS HOUSE. James Shaw & Co., Proprietors

ST. ALBANS, VT.—WELDON HOUSE. This splendid hotel is equal to any in the country. It contains nearly one hundred and fifty rooms, with all the modern improvements. John A. Parks, Manager.

TORONTO.—ROSSIN HOUSE. G. Shears, Proprietor.

WHITE MOUNTAINS, N. H.—CRAWFORD HOUSE. This house is not surpassed by any hotel in the Eastern States. It contains 120 rooms, and is capable of accommodating 300 guests.

OF WHICH ONE-FIFTH (10s. per Share) IS PAID UP.

NUMBER OF SHAREHOLDERS EXCEEDS 1900.

The Annual Premium Revenue is over £330,000 Stg.

HEAD OFFICE : LONDON, ENGLAND.

British Branches : Edinburgh, Dublin, Birmingham, Manchester, Liverpool, Ashton, Bristol.

Colonial and Foreign Branches : Montreal, Sydney, Melbourne, Adelaide, South Africa,—Capetown, Bombay, Mauritius,—Port Louis, and Hamburg, with Agencies throughout Great Britain and the Continent of Europe.

THE

ROYAL NAVAL



AND MILITARY

LIFE DEPARTMENT

IS UNDER THE SPECIAL PATRONAGE OF

HER MOST GRACIOUS MAJESTY THE QUEEN.

VICE-PATRONS :

FIELD-MARSHAL HIS ROYAL HIGHNESS THE DUKE OF CAMBRIDGE, K.G., K.P.

G.C.B., G.C.M.G., General Commander-in-Chief.

HIS GRACE THE DUKE OF RICHMOND.

THE RIGHT HON. EARL GREY.

THE RIGHT HON. SIR STAFFORD NORTHCOTE, BART., M.P., President, Board of Trade

VISCOUNT EVERSLEY, A.D.C. to the Queen.

ADMIRAL SIR JAMES ALEX. GORDON, G.C.B.

GENERAL SIR JOHN F. BURGOYNE, BART., G.C.B., Inspector-General of Engineers.

GENERAL SIR HEW D. ROSS, G.C.B., R.A.

MAJOR-GENERAL LORD WILLIAM PAULET, K.C.B., Adjutant-General.

LIEUT.-GENERAL SIR JAMES HOPE GRANT, G.C.B., Quartermaster-General.

LIEUT.-GENERAL WILLIAM FRED. FORSTER, K.H., Military Secretary.

CHAIRMAN OF THE LONDON BOARD : SIR FREDERIC SMITH, K.H., F.R.S.

MANAGER, HENRY LAKE, Esq. SECRETARY, J. HAMER OWENS, Esq.

*Head Office in Canada : 71 Great St. James Street,
MONTREAL.*

DIRECTORS IN CANADA.

(All of whom are fully qualified Shareholders.)

HENRY THOMAS, Esq., (Messrs. Thomas, Thibaudeau & Co.), Director, Bank of Montreal, Chairman

HUGH ALLAN, Esq., Montreal.

CHAS. JOHN BRYDGES, Esq., Managing Director of the Grand Trunk Railway, Montreal.

THE HON. CHAS. ALLEYN, Q.C., M.P.P., Quebec.

FRANCOIS LECLAIRE, Esq., (F. & J. Leclaire & Co., Director of the Banque du Peuple, Montreal.

WILLIAM WORKMAN, Esq., President City Bank, Montreal.

Manager for Canada—EDWARD RAWLINGS.

127.P

THE LIVERPOOL & LONDON AND GLOBE INSURANCE COMPANY.

CAPITAL, SURPLUS, and RESERVED FUNDS - \$16,271,675
 INVESTED IN CANADA - - - - - 250,000
 PREMIUMS RECEIVED IN 1866, were - - - - \$5,362,260
 DAILY PREMIUMS, UPWARDS OF - - - - - 17,000

Shareholders personally responsible for engagements of the Company.
 All Directors must be Shareholders.

HEAD OFFICES:

LIVERPOOL. LONDON. MONTREAL.

CANADA BOARD OF DIRECTORS.

T. B. ANDERSON, Esq., Chairman, (President Bank of Montreal.)
 HENRY STARNES, Esq., Deputy Chairman, (Manager Ontario Bank.)
 E. H. KING, Esq., (General Manager Bank of Montreal.)
 HENRY CHAPMAN, Esq., Merchant.
 THOMAS CRAMP Esq., Merchant.

G. F. C. SMITH, *Resident Secretary.*

F. A. BALL, Hamilton, C. W. } *Inspectors.*
 JAMES SPIER, Montreal, }

FIRE DEPARTMENT.—Insurances effected on all classes of Property at Current Rates. Farm Risks at Specially Reduced Rates.

LIFE DEPARTMENT.—No Extra Charge for Military Service in Defence of the Country. Life Policies for the benefit of Wife or Children are secure from seizure by Creditors. Claims payable one month after proof of death.

All Bonuses, Stated and Guaranteed (a system peculiar to this Company). At age 20, by payment of \$26.00 yearly for 20 years only, a policy of \$1000 is secured, payable at death.

" TABLES OF RATES "

adapted to the circumstances of all classes may be obtained at the Montreal Offices and of the Company's Agents generally throughout the Provinces.

Canada Business under the sole control of the Montreal Board.

AGENCIES established throughout Canada.

G. F. C. SMITH,
 Resident Secretary Canada Branch,
 Montreal.

10.7

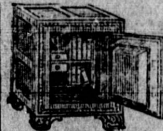
IMPORTANT TO FARMERS.

CANADIAN SUPER-PHOSPHATE.—A Standard Manure for all Field and Garden Crops. It matures crops from ten to twenty days earlier, and greatly increases the yield.

Price \$50 per ton, in barrels of about 225 lbs. each.

It is also put up in \$1 packages for retail.

E. L. SNOW,
 Manufacturer, Montreal.



KERSHAW & EDWARDS

Manufacturers of
SALAMANDER SAFES,

Secured with Powder Proof Locks.
 Also, Combined Iron and Steel Specie Chests
 and Doors, Combination Bank Locks, &c.

Warerooms:
 82 and 84 St. Francois Xavier Street,
 Montreal.

4.7

,675
,000
,260
,000

urrent

the
e by
0, by
l.

of the

anch,
al.

W

S

f
S,

hests
&c.

c

