

**CIHM
Microfiche
Series
(Monographs)**

**ICMH
Collection de
microfiches
(monographies)**



Canadian Institute for Historical Microreproductions / Institut canadien de microreproductions historiques

© 1998

The
copy
may
the
sign
che



This
Ce d

10x



Technical and Bibliographic Notes / Notes techniques et bibliographiques

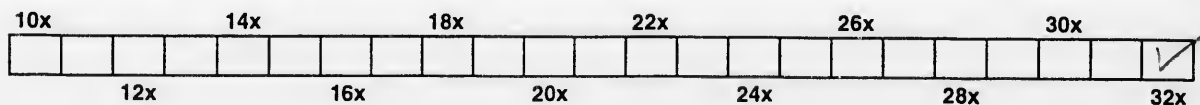
The Institute has attempted to obtain the best original copy available for filming. Features of this copy which may be bibliographically unique, which may alter any of the images in the reproduction, or which may significantly change the usual method of filming are checked below.

- Coloured covers / Couverture de couleur
- Covers damaged / Couverture endommagée
- Covers restored and/or laminated / Couverture restaurée et/ou pelliculée
- Cover title missing / Le titre de couverture manque
- Coloured maps / Cartes géographiques en couleur
- Coloured ink (i.e. other than blue or black) / Encre de couleur (i.e. autre que bleue ou noire)
- Coloured plates and/or illustrations / Planches et/ou illustrations en couleur
- Bound with other material / Relié avec d'autres documents
- Only edition available / Seule édition disponible
- Tight binding may cause shadows or distortion along interior margin / La reliure serrée peut causer de l'ombre ou de la distorsion le long de la marge intérieure.
- Blank leaves added during restorations may appear within the text. Whenever possible, these have been omitted from filming / Il se peut que certaines pages blanches ajoutées lors d'une restauration apparaissent dans le texte, mais, lorsque cela était possible, ces pages n'ont pas été filmées.
- Additional comments / Commentaires supplémentaires:

L'Institut a microfilmé le meilleur exemplaire qu'il lui a été possible de se procurer. Les détails de cet exemplaire qui sont peut-être uniques du point de vue bibliographique, qui peuvent modifier une image reproduite, ou qui peuvent exiger une modification dans la méthode normale de filmage sont indiqués ci-dessous.

- Coloured pages / Pages de couleur
- Pages damaged / Pages endommagées
- Pages restored and/or laminated / Pages restaurées et/ou pelliculées
- Pages discoloured, stained or foxed / Pages décolorées, tachetées ou piquées
- Pages detached / Pages détachées
- Showthrough / Transparence
- Quality of print varies / Qualité inégale de l'impression
- Includes supplementary material / Comprend du matériel supplémentaire
- Pages wholly or partially obscured by errata slips, tissues, etc., have been refilmed to ensure the best possible image / Les pages totalement ou partiellement obscurcies par un feuillet d'errata, une pelure, etc., ont été filmées à nouveau de façon à obtenir la meilleure image possible.
- Opposing pages with varying colouration or discolorations are filmed twice to ensure the best possible image / Les pages s'opposant ayant des colorations variables ou des décolorations sont filmées deux fois afin d'obtenir la meilleure image possible.

This item is filmed at the reduction ratio checked below /
Ce document est filmé au taux de réduction indiqué ci-dessous.



The copy filmed here has been reproduced thanks to the generosity of:

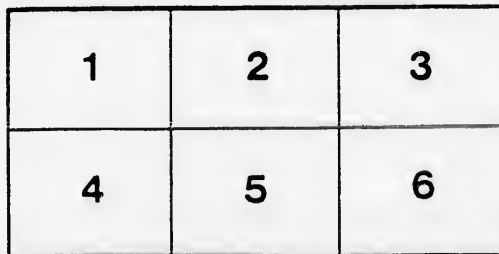
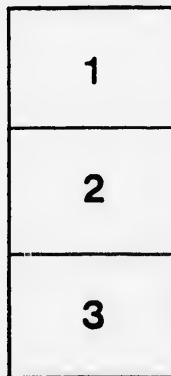
New Brunswick Museum,
Library & Archives Department

The images appearing here are the best quality possible considering the condition and legibility of the original copy and in keeping with the filming contract specifications.

Original copies in printed paper covers are filmed beginning with the front cover and ending on the last page with a printed or illustrated impression, or the back cover when appropriate. All other original copies are filmed beginning on the first page with a printed or illustrated impression, and ending on the last page with a printed or illustrated impression.

The last recorded frame on each microfiche shall contain the symbol \rightarrow (meaning "CONTINUED"), or the symbol ∇ (meaning "END"), whichever applies.

Maps, plates, charts, etc., may be filmed at different reduction ratios. Those too large to be entirely included in one exposure are filmed beginning in the upper left hand corner, left to right and top to bottom, as many frames as required. The following diagrams illustrate the method:



L'exemplaire filmé fut reproduit grâce à la générosité de:

New Brunswick Museum
Library & Archives Department

Les images suivantes ont été reproduites avec le plus grand soin, compte tenu de la condition et de la netteté de l'exemplaire filmé, et en conformité avec les conditions du contrat de filmage.

Les exemplaires originaux dont la couverture en papier est imprimée sont filmés en commençant par le premier plat et en terminant soit par la dernière page qui comporte une empreinte d'impression ou d'illustration, soit par le second plat, selon le cas. Tous les autres exemplaires originaux sont filmés en commençant par la première page qui comporte une empreinte d'impression ou d'illustration et en terminant par la dernière page qui comporte une telle empreinte.

Un des symboles suivants apparaîtra sur la dernière image de chaque microfiche, selon le cas: le symbole \rightarrow signifie "A SUIVRE", le symbole ∇ signifie "FIN".

Les cartes, planches, tableaux, etc., peuvent être filmés à des taux de réduction différents. Lorsque le document est trop grand pour être reproduit en un seul cliché, il est filmé à partir de l'angle supérieur gauche, de gauche à droite, et de haut en bas, en prenant le nombre d'images nécessaire. Les diagrammes suivants illustrent la méthode.

City of Quebec
Jubilee Illustrated



THE QUEEN ASCENDING THE THRONE FIFTY YEARS AGO.



THE
CITY of QUÉBEC
JUBILEE ILLUSTRATED



1837

1887

LITHOGRAPHED AND PUBLISHED BY THE GEORGE BISHOP ENGRAVING AND PRINTING CO., Limited. MONTREAL.

with Scotch
 on a city
 institutions,
 nations of
 European city
 and still
 and the
 of about the
 already con-
 cretions with
 a city at the
 e the labor
 upted alone
 ciety, and
 wa country
 of British
 LaMotte,
 1869.

QUEBEC.
 the extensive
 and the the
 trait charac-
 in a certain
 world dimen-
 sion. As
 sides of the
 well as the
 in the profes-
 sions to be
 found
 moated cas-
 tles, no Wal-
 Abbots, nor
 architectural
 Dampiers,
 ches-Chiron,
 would have
 na, the best
 of

d years.
 ries or pa-
 e of La Belle
 ve had to do
 men so in lav-
 art could be
 a attractions
 an a brick and
 an impart. A
 apring, sur-
 d to the tur-
 old England,
 rly hallowed
 e memorable
 and by the
 a also, more
 e of French
 la-of North

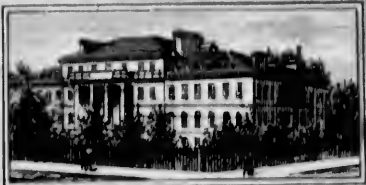
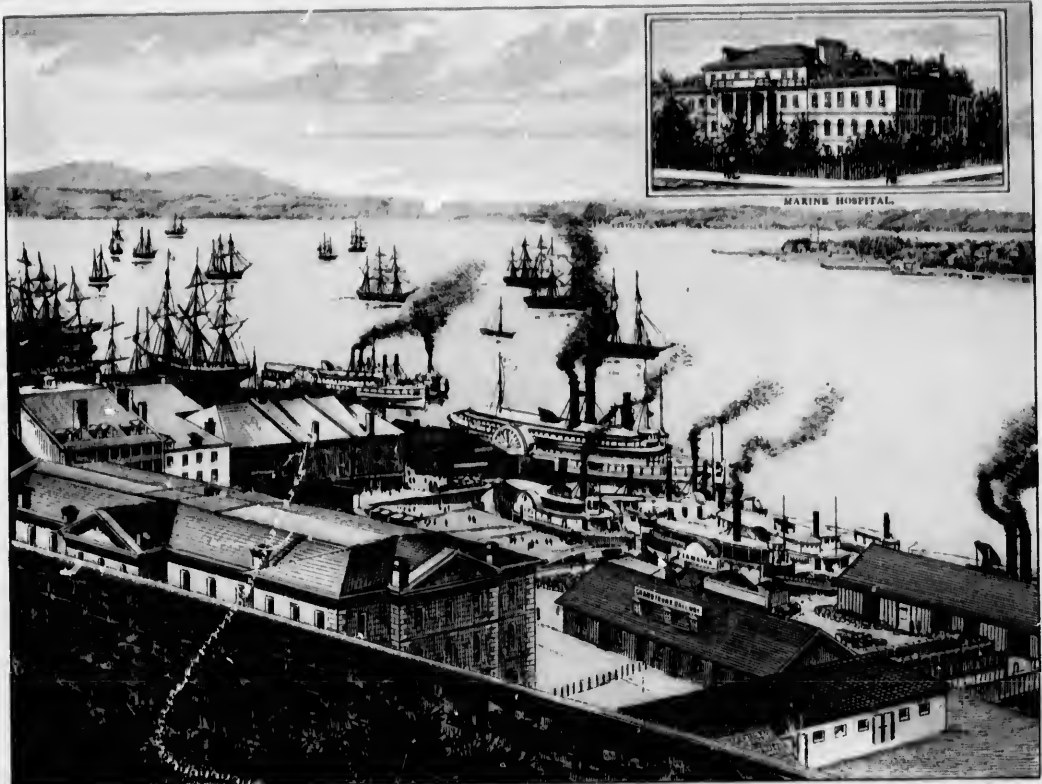
rooly visible
 grove of old
 primeval, on
 e, from Cape
 from thence
 seven miles to
 in sweet so-
 ary places and
 e on heights,
 owing below,
 with the blue
 as a back-
 1790-94) of
 main of about
 r James H.,
 a in 1807, and
 thinson, as a
 Elgin, then
 official re-est-
 a Province of

Beckett, Esq.
 in Prison, Esq.
 Estabill, Esq.
 Campbell, Esq.
 James M. Le
 Col. Jos. Bell
 of Alfred P.
 ate Chas. E.

urniss, Esq.
 Wm. Rhodes,
 Campbell, Esq.
 E. Debell, Esq.
 ed. Turnbull,
 rs. W. Stock-
 Andrew Stuart,
 Herrin, Esq.
 son, Esq.
 own, Esq.
 n Lesage, Esq.
 on James G.

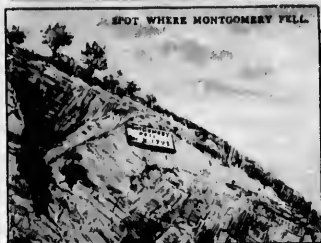
Hamilton, Esq.
 vid A. Boss,
 son, Esq.
 angelier.
 dence, 1791-4)
 at of Herbert
 Hon. Judge
 nes Parka, Esq.
 R. P. Landry,
 ry seats round
 environs, most
 king views of

M.
 are calculated
 to lofty plateaus,
 in deadly an-
 1754, Emol-
 th, Hawkins,
 her historians
 pic accounts
 ring about 32
 man, Abraham
 Abraham Mar-
 wance to the
 he summit of
 to the west, by
 t. Louis road;
 ending to the
 the plains are
 to the whole of
 t. Foye road,

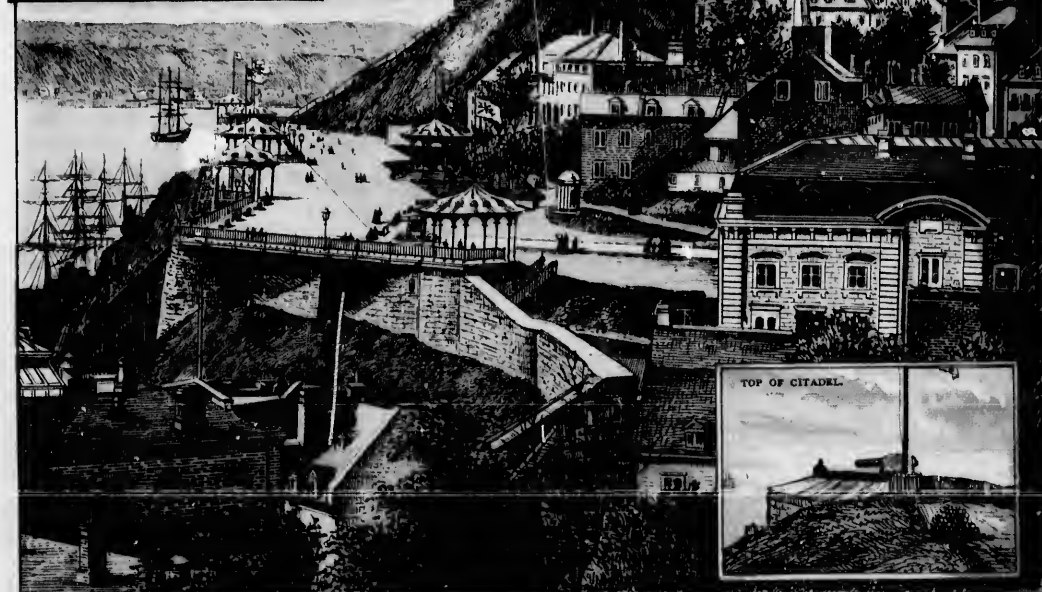


MARINE HOSPITAL.

VIEW OF HARBOUR "LOOKING DOWN."



SPOT WHERE MONTGOMERY FELL.



TOP OF CITADEL.

VIEW OF CITADEL "LOOKING UP."

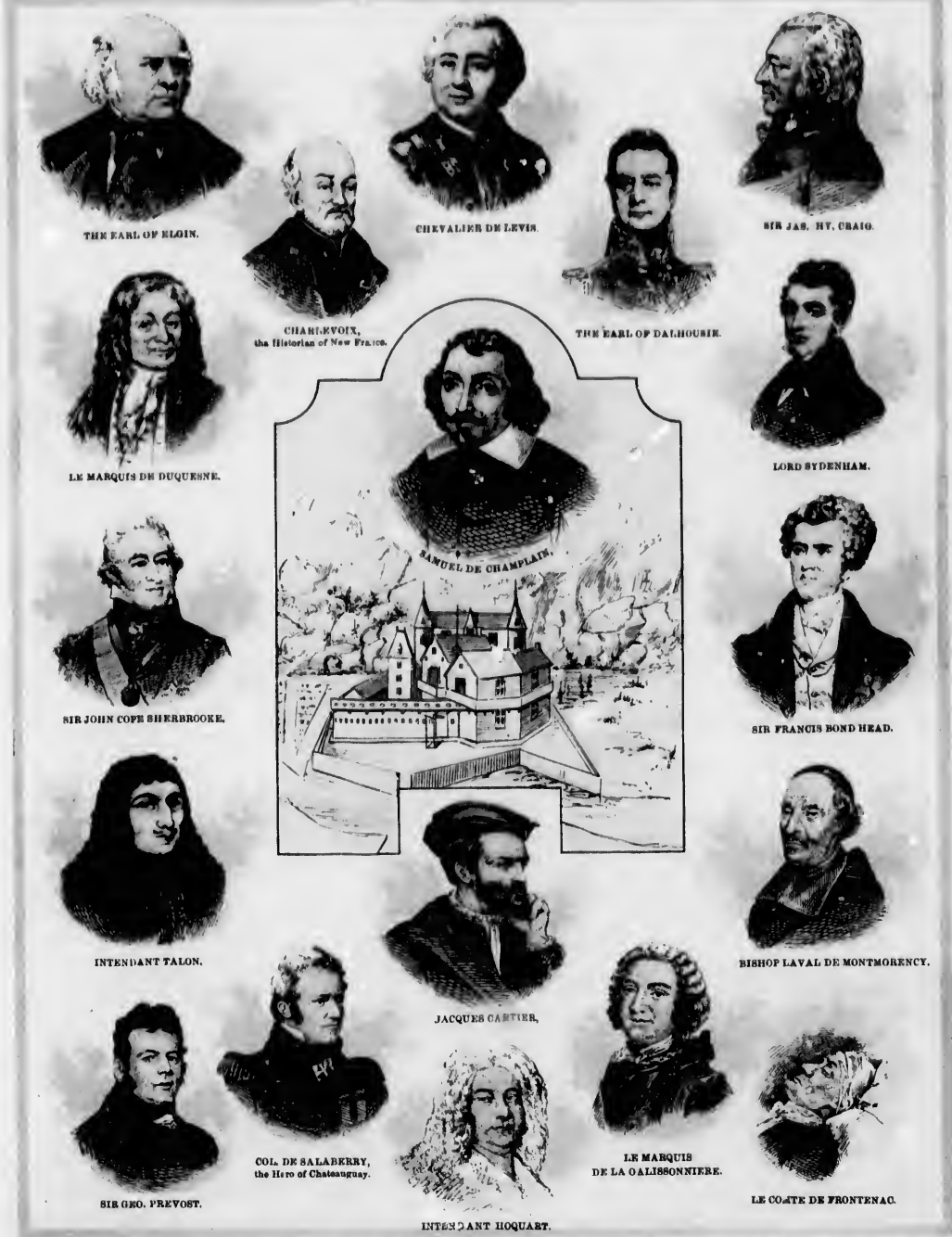


SIR HECTOR LANGEVIN.

THE QUEBEC GRAVING DOCK.

Go
Chun
of h
Wol
prev
whic
the
the
with
had
rush
pow
fish
mon
fetic
is u
plo
plec
up
stre
dri
of h
Hag
right
to e

THE QUEBEC GRAVING DOCK.



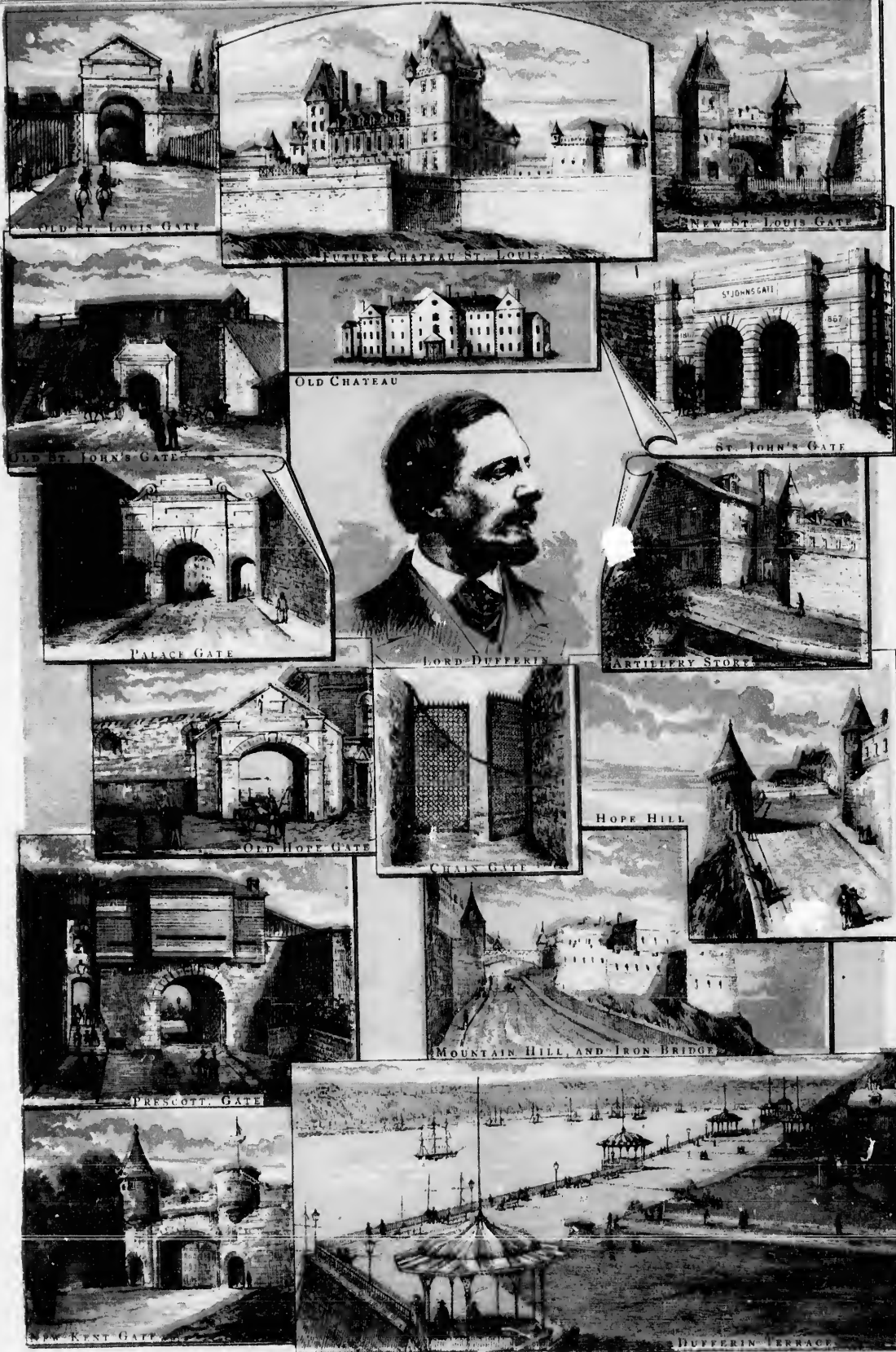
General Montcalm, encamped near the Beauport Church, by some mismanagement, heard of the ascent of his enemy, only about six in the morning, though Wolfe had begun to land his troops at least six hours previously. Leaving a body of men to guard his lines, which extended from Ruelandfield inclusive, in a line with the Marine Hospital, on the Beauport beach, as far as the Falls of Montmorency, he took all his available force with him, except his choice corps, the Grenadiers, which had accompanied Douglassville, past St. Augustin, and rushed over the ferry and bridge of boats, hoping to overpower the English before they could have time to establish themselves in force on the crest of the hill at Montcalm. But he arrived too late; at eight a.m., the English positions were encamped on the hill summit, above what is now styled Wolfe's Cove, and at ten they were deploying one mile closer to the city, with the two small pieces of artillery they had been able to haul with ropes, up the dizzy height, through the bed of the St. Charles stream, *versus* St. Denis. Montcalm, mounted on a dark charger, was conspicuous in front of the left wing of his line, and Wolfe, on foot, at the head of the 28th Regiment, and the Louisbourg Grenadiers, towards the right of the British line, must have been nearly opposite to each other at the commencement of the battle, which

was most severe in that part of the field; and by a singular coincidence, each of these heroic leaders had been twice wounded during the brief conflict before he received his last and fatal wound.

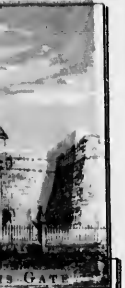
But the valiant Montcalm, regardless of pain, relaxed not his efforts to rally his broken battalions on their hurried retreat towards their camp at Beauport and towards the city, until he received a shot in the loins, when near St. Louis (St.), and so invincible was his fortitude that not even the severity of this mortal stroke could abate his gallant spirit, or alter his intrepid bearing. Supported by two grenadiers, one on each side of his horse, he re-entered the city, and in reply to some women who, on seeing blood flow from his wounds as he rode down St. Louis street, exclaimed: *Où, Mon Dieu! Mon Dieu! le Marquis est-il?* courteously assured them that he was not seriously hurt, and begged them not to distress themselves on his account. *Ce n'est rien! Ce n'est rien! Ne vous affligez pas pour moi, mes bonnes sœurs.* The last words of Wolfe, im-
 periously enquired in history, excite, after the lapse of a century, the liveliest admiration and sympathy, and similar interest may, perhaps, be awakened by the narrative of the dying scene, in the eventful career of his great opponent. The light scarcely lasted an hour;

at twelve the whole French force was in full retreat, seeking to cross the St. Charles, at the ford where there was a bridge of boats and hornwork with palisades to protect that portion of the camp located inside of the extensive earthworks, the contour and remains of which are quite visible to this day, in rear of G. H. Parke's residence, on the St. Charlesbourg road; a party of Canadian militia concealed in the brushwood which fringed a portion of St. John's suburbs, towards the *Côte de St. Jerome*, kept the French 75th Highlanders in check a short time, but they were soon dislodged, and then the daymores did their merciful work. Having reached their white tents, visible from the city, the French squadrons, duped, and without leaders, waited until the shadows of night should conceal them, and at eight o'clock that evening, leaving their tents standing, to mislead the enemy, the retreat or rather rout commenced. The broken squadrons hurried helter skelter towards Charlesbourg, where the road branches off towards Lorette, running parallel with the river, and reached, about four o'clock morning, Cap Rouge, where they halted for a short time, and then continued their disorderly march until the following fore Jacques Cartier, on the high bank of the river of that name, gave them shelter.

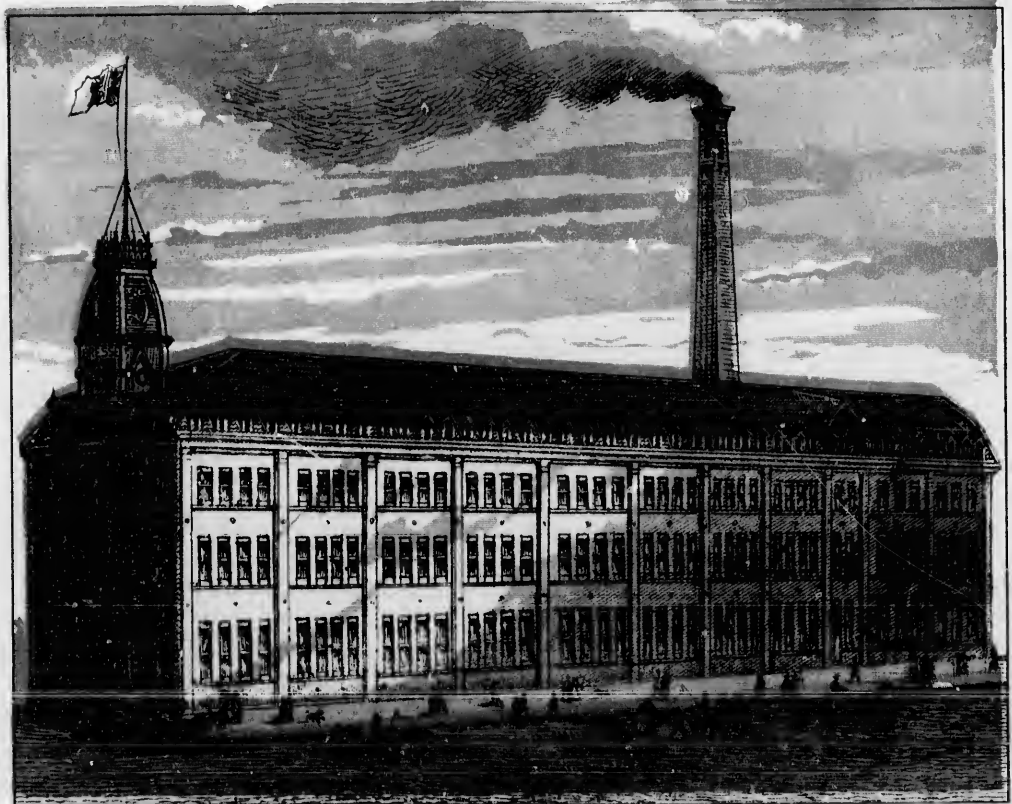
J. M. L.



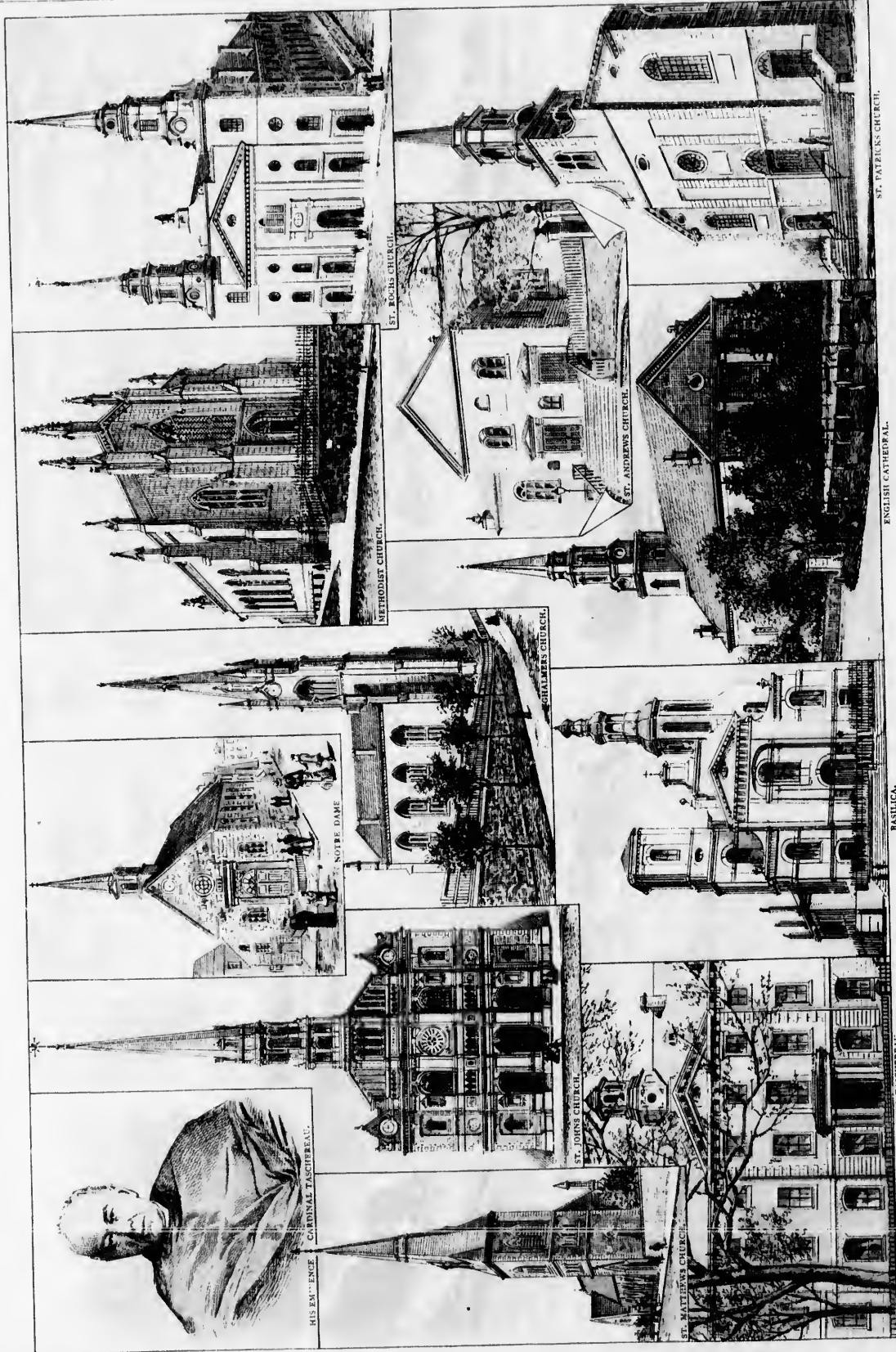
QUEBEC—PAST, PRESENT & FUTURE.
OLD AND NEW GATES.



BIRDS EYE VIEW OF ST. ROCHS.



CHAUSURES. BRESSE, BOOTS & SHOES.



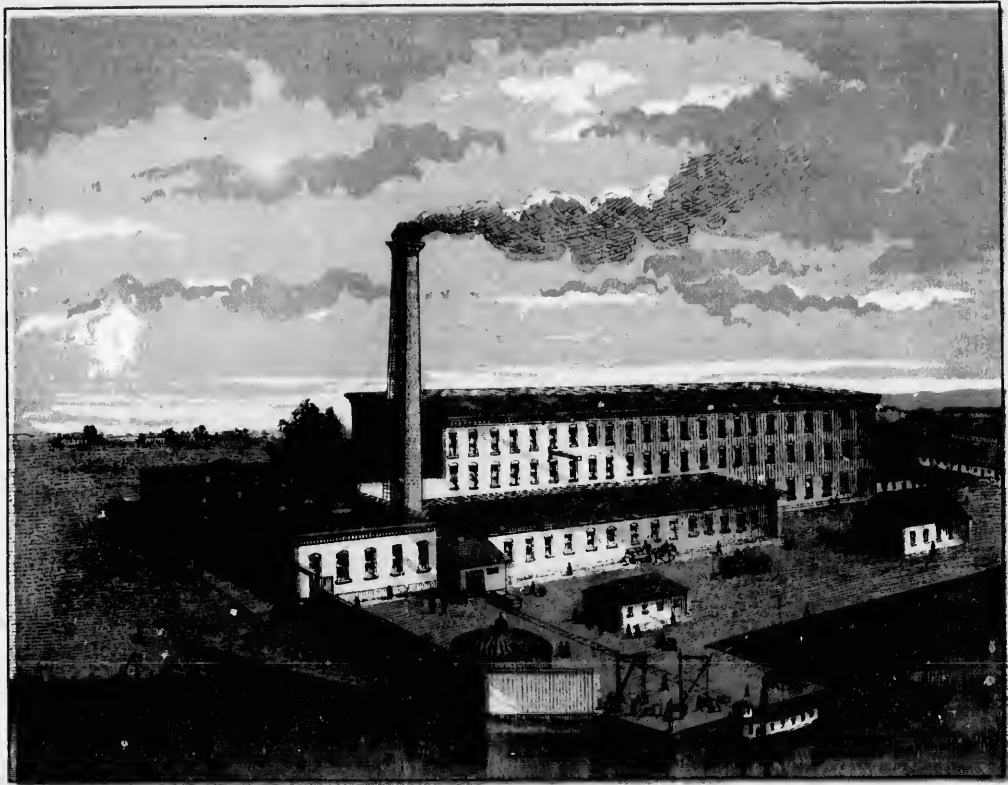


ST. PATRICK'S CHURCH.

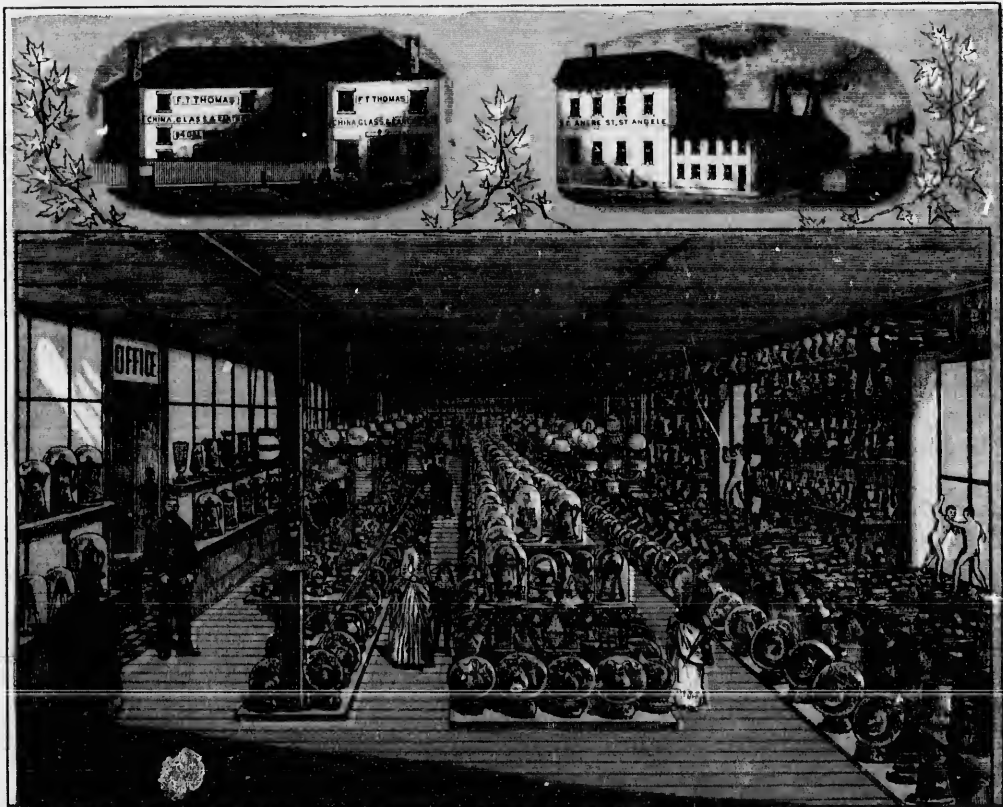
ENGLISH CATHEDRAL.

BASILICA.

RESIDENCE OF HIS EMINENCY CARDINAL TACHÉ.



QUEBEC WORSTED CO.'S, MILLS.



CHINA, GLASS & EARTHENWARE. P. T. THOMAS, FAÏENCE, VERRERIE ET POTERIE.

a visit and will need in getting to the Canadian pictographic in the form of Nature, or beautiful falls, themselves to the sea, looking down the river, gives a complete picture of Lake St. Lawrence and the city of Quebec.

S.

wholesale or retail, Mr. P. F. Thomas, gentlemen keeping us and styles. The Messrs. Valliere is well known in the city for, bedroom, hall, Mr. Jules C. Dorion a store in St. Joseph's preparation of physiological confection. Mr. A. B. Dupuis a Pontstree.

own in this paper, and Mr. L. P. Vallier pictures have a very admired for musical instruments in stores of those engines and Bernard & Co. of almost every kind, and his new at great attention. addition to the Governor, and his store is search of novelties, made is the saw mill of interest to the man, and have only to the volume of business. Hundreds of men all, in the various shops. The large hardware, Wurtels contains the household and best business houses

ments in connection with the company's works and perfect. The circuit of 34 miles, continuous overflow, from wheel to drum impact and perfect names.

our notes with a representation of Quebec Fire Assur- and The Royal, of these companies being large business-agers are enterprising whom is a real and best business. Crank Railway Company, time, and afford through a delightful the St. Louis Hotel tion to the traveller. St. Louis Hotel and ents under the able Good, airy rooms, able may be secured



Watches and Jewellery EMILE JACOT. Horloger Joaillier et Bijoutier.
Chemist. J. C. DORION. Pharmacien.



China Ware Crockery THOMAS NORRIS. Faience et Verrerie.



Royal Insurance Co. C. P. CHAMPION, AGENT. Queen Insurance Co.



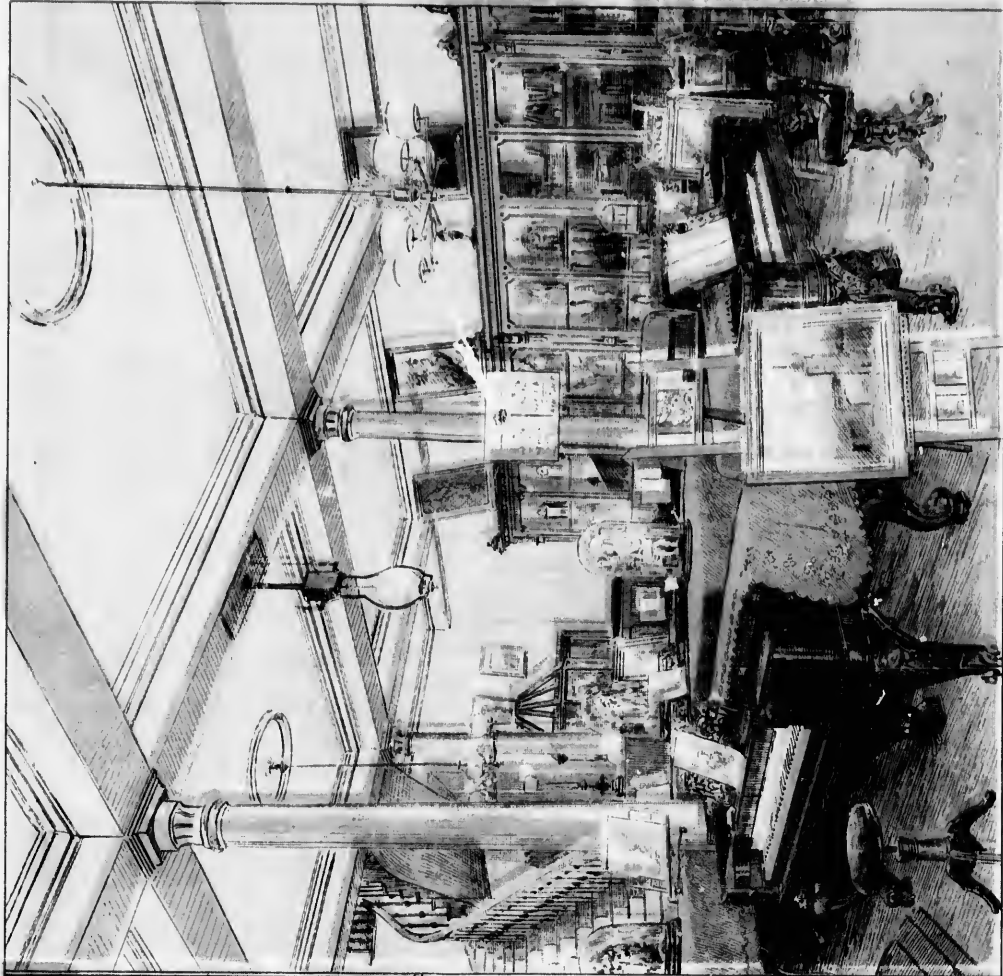
QUEBEC FIRE INSURANCE COMPANY.



Leather Merchants ULRIC GERMAIN & FRERE Marchands de Cuir. Boots & Shoes. J. E. WOODLEY. Manufacturier de Chaussures.
Tanners & Curriers. Tanneurs et Corroyeurs.

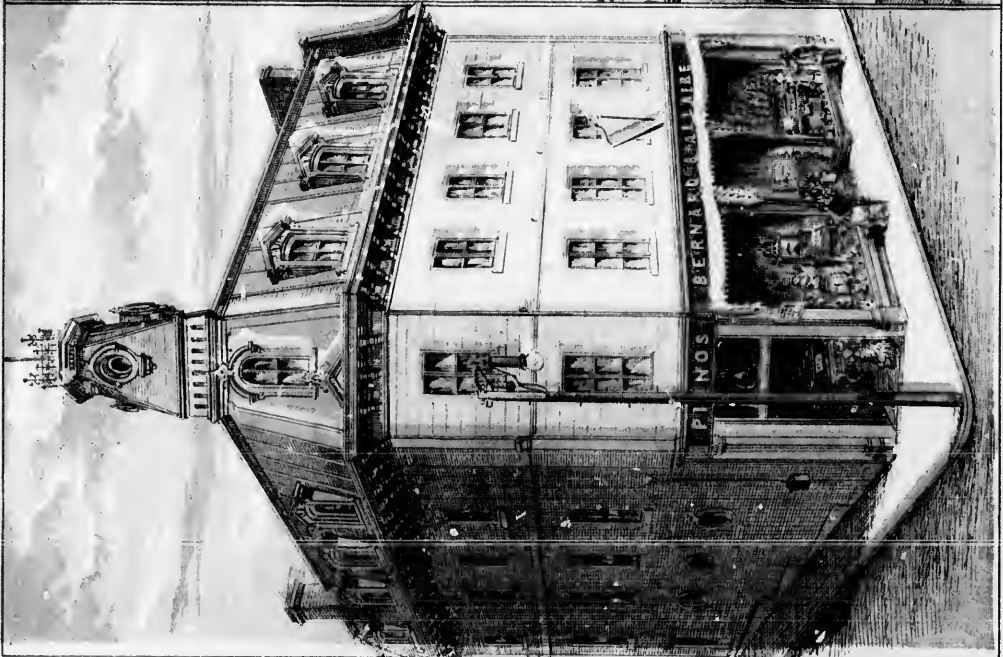


ULRIC GERMAIN & FRERE Tanneurs et Corroyeurs.



PIANOS ET HARMONIUMS.
MACHINES A COUDRE "DOMESTIC"

BERNARD & ALLAIRE.
EDITEURS DE MUSIQUE.



PIANOS & ORGANES.
"DOMESTIC" SEWING MACHINES



PIANOS ET HARMONIUMS.
MACHINES A COUDRE "DOMESTIC"

BERNARD & ALLAIRE.
EDITEURS DE M^{rs} RUE

PIANOS & ORGANS.
"DOMESTIC" SEWING MACHINES



CLERMONT

SPENCER GRANGE

RAVENSWOOD

SHAMWOOD

BANDON LODGE

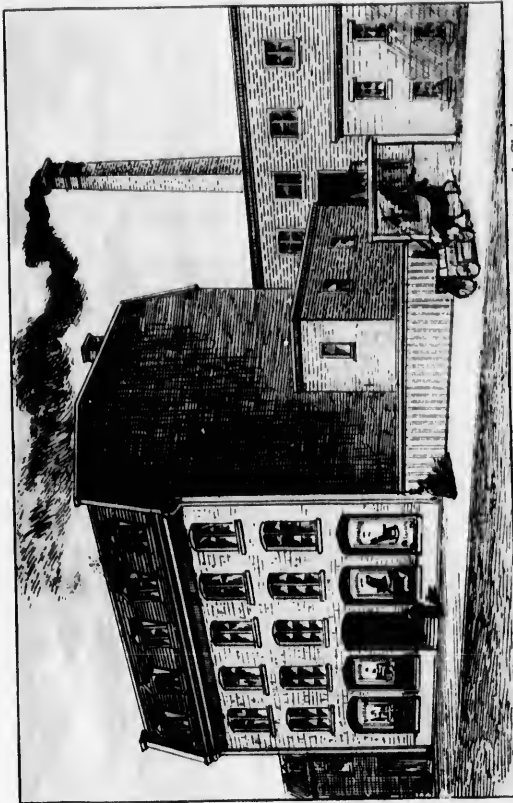
BOIS BRILLANT

MONTMORENCI COPPIN

HALDIMAND HOUSE

PAVILLY

QUEBEC RESIDENCES.



P. VALLIERE. Manufactures de Meubles et de Chaises.



CHAMPLAIN MARKET.

J. B. MAILLIERE

SPECIALTIES

FANCY FUR RUGS
AND
INDIAN CURIOSITIES

145 ST. JOSEPH STREET, QUEBEC.

Ladies Fur Seal Sacques, Muffs, Caps, Collars, Fur Lined Circulars & Dolmans

THE LARGEST
FUR MANUFACTURING
ESTABLISHMENT
IN
CANADA.

THE NEW BRIDGE.

The plans for the bridge and its approaches have been prepared by Sir James Francis, the eminent English engineer, assisted by Mr. A. L. Light, M. Inst. C. E., the provincial engineer of the Province of Quebec.

The St. Lawrence, at the point selected for the bridge is comparatively narrow, the

WIDTH FROM SHOULDER TO SHOULDER

being 200 feet. But the great depth of water prevents the construction of piers in the centre, hence the new cantilever principle has to be adopted for the supports.

Two massive piers of granite masonry will be built at a distance of 400 and 210 feet from the shores of the river in a depth of about 10 feet of water, and on these the enormous cantilever iron work will be erected. The piers will be built sufficiently high to allow the masts of the largest ocean steamers to pass under the centre span. The dimensions of the bridge will be as follows: Length of centre cantilever span, 1412 feet; length of northern shore-pier, 457 feet; length of southern shore span, 187 feet; total length of bridge and approaches, 1800 feet;

HEIGHT FROM HIGH WATER MARK

to bottom of bridge, 150 feet; height of piers above high water, 120 feet; extreme height of top of cantilever above high water, 408 feet. The centre span will be 200 feet shorter than that of the cantilever bridge now being built over the Firth of Forth, which has a span of 1700 feet and a total length of 10,000 feet. The Quebec bridge has been designed for a double track, but for economical reasons this may be altered so as to provide for a single track only.

Lack of space prevents our expatiating on the value of the proposed structure which will undoubtedly be completed in the near future.

The engraving of the Quebec Graving Dock occupies a full page of this paper. It will bear close scrutiny. The Dock, a well and strongly constructed, and will compare favorably with similar work in any part of the world. The Commissioners of the Harbor are:—

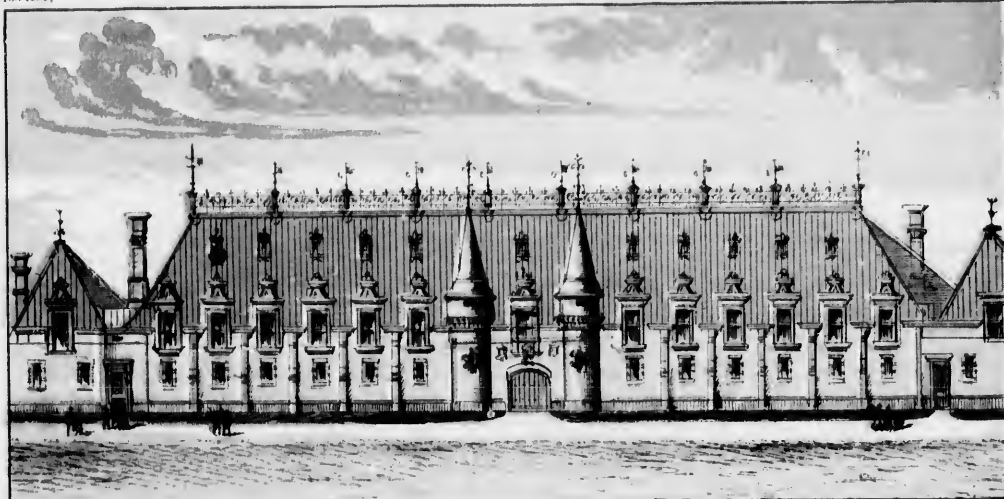
- P. V. VALRY, Chairman.
- The Honorable THOS. MCGREGG, M. P.
- R. H. DUBRELL.
- JULES TRAPIER.
- WILLIAM HAY.
- J. BELL, FOREMAN.

FERDINAND HAMEL.
R. H. SMITH.

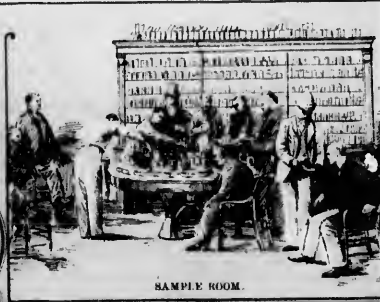
EDMOND HAMEL.

Sir Hector L. Langevin, K. C. M. G., B. H., whose portrait adorns this journal, has been Minister of Public Works since 1873. He is the leader of the French Canadian Conservative party, and was born in the City of Quebec, on the 20th of August, 1826. Sir Hector has been a most useful public man, and has occupied nearly all the chief offices of State, except that of Premier. His profession is a lawyer, but he is known principally to the people as a statesman of superior administrative and executive capacity. He has been Mayor of Quebec, Vice-President of the North Shore Railway Company, President of St. Jean Baptiste Society, President of L'Institut Canadien, and one of the founders of the Dominion of Canada. For his services in the last named important work, the Queen created him a companion of the Bath. On the 24th May, 1881, Her Majesty raised him to the dignity of Knighthood, in the most distinguished order of St. Michael and St. George. The Pope conferred on him the honor of Knight Commander in the order of St. Gregory the Great. In Parliament, Sir Hector sits for Three Rivers.

CHAMPLAIN MARKET.



NEW DRILL SHED.



SAMPLE ROOM.



WHITEHEAD & TURNER.
Direct Importers China and Japan Teas, Mediterranean Goods, West India Produce.
Broom and Brush Manufacturers.

DALHOUSIE STREET

GEST
CTURING
MENT
DA.



Bishop's Palace and ascent by Mountain Hill.
Palais de l'Evêque et Côte La Montagne.



The Ursuline Nunnery taken from the Remparts, 1759.
L'Hôpital des Ursulines deservit par les Remparts, vue prise de dessus le Rempart, 1759.



WOLFF.



Jesuit's Church and ruins of Cathedral, (classical) 1759.
Eglise des Jésuites et ruines de l'église gothique, 1759.



To the Right Honorable WILLIAM PITT Esq.
One of His Majesty's most Honourable Privy Council
AND PRINCIPAL SECRETARY OF STATE &c

(This Place is most strongly fortified
by his most Obedient and
most Obedient Humble Servant
The Author)

DEFENCES OF QUEBEC.

Batteries No of Guns. Mors.

A The Citadel 10 10

B The Battery on the Pointe 10 10

C The Battery on the Pointe 10 10

D The Battery on the Pointe 10 10

E The Battery on the Pointe 10 10

F The Battery on the Pointe 10 10

G The Battery on the Pointe 10 10

H The Battery on the Pointe 10 10

I The Battery on the Pointe 10 10

K The Battery on the Pointe 10 10

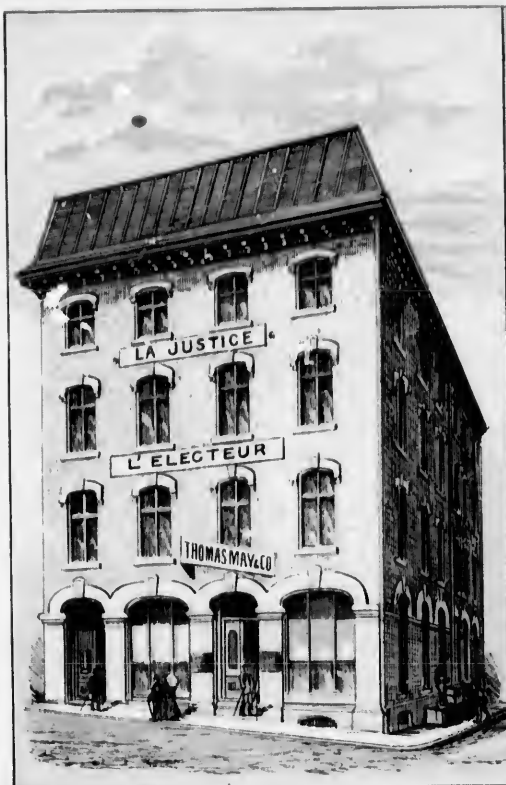
L The Battery on the Pointe 10 10

M The Battery on the Pointe 10 10

N The Battery on the Pointe 10 10

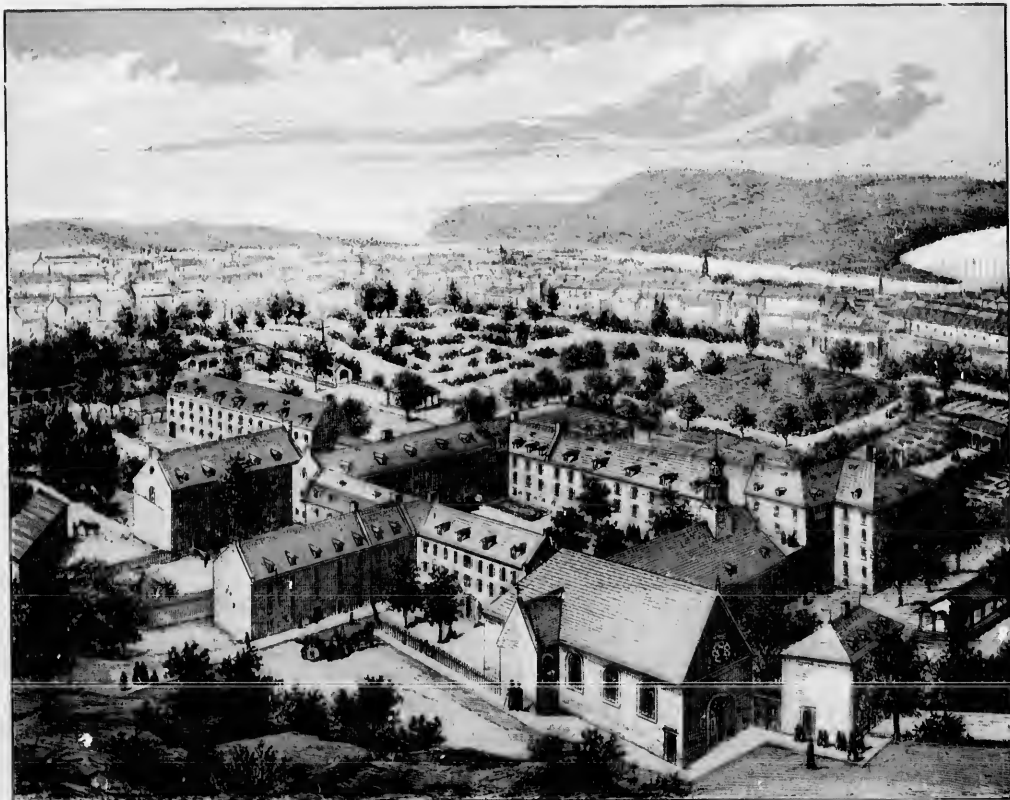
O The Battery on the Pointe 10 10





Millinery. THOMAS MAY & Co. Articles de Modes

Dry Goods. M'CALL, SHEHYN & Co. Marchandises Sèches
Dry Goods. P. GARNEAU FILS & CIE. Marchandises Sèches



THE CONVENT OF THE URSELINES. LE COUVENT DES URSELINES.

The place where a fine view
 made by the Baron de la Rivière during the
 whole night, which the English had at the
 name de Keasport a Small Dry at L

part of the bridge part
 M. de la Rivière at the corner
 I might have
 M. de la Rivière
 M. de la Rivière



the early his-
by students
the principal
school on
the street, and
several
in a state
of confusion
the various
worn girls,
besides the
the finished
young Man's
library have

the Marine
on the bank
with every
; the Hotel
ullion, notes
ins have the
the chapel
General Hos-
pishop St.
in the sea;
in here, and
and French
Hale Hospi-
the Asylum,
at Beauport
ing structure,
the hill lead-
a cellar and
collection of
the club's roll
as of Quebec
paper of mon-
tles.

ctions to the
at of slight
easy, neces-
ger required,
the gates at
taker at the
it, and points
road to the
and in par-
ough many
; a caliche or
a bastion in
n firm inste-
acon which

there being
are published
rees in repro-
ing *Telegraph*,
Review, pub-
enjoy large
which the
is an old his-
the "New-
-ven here, as
store on the
is the leading
in the morn-
on *Fabrique*
leur, publis-
-rench Liberal
lionalist are
ving, took of
om the same
he same firm,
The *Churier* is
is street, and
ers, A. Cote &

afforded from
ed greatly in
pipe was or-
l at a cost of
in wholesome
y well protect-
ence of the
l their rates,
trictly. Con-
and the United
lines, and the
navigation to
ars and com-
ntinued else-
ix: the Union
nomie de Notre
he Post Office
The popula-
is 1881, 62,416
being Protec-

Chief Industries
steamships have
want-to, re-
Manufacturing
the belief that
taking a first
Canada. The
y are iron con-
musical instru-
rubber goods.

greater port
Ottawa and St.
down the river
by booms, are
extend along the
the city. On the
Quebec, are
of the leading
on Canada and
601, 691, 408
aces were, 484
large quantities
ad red pine, are
the value of the
is destined to
ad cattle trade,
the Dominion
Principal Home
or, eight elder-
their offices for
composed of the
m occupy a full
lion, François
J. J. B. Choini-
sacé ward; W. J.
arn, Champlain
Rinfret, M.P.E.,
s, Carter ward;
lors are, Messrs.
ois ward; Fran-
a ward; J. Kalne
rt McGrovey and
F. Penney and
nd J. Plamondon,
Barbeau and G.



Wholesale Grocers. A. JOSEPH & SON. Epicerie en Gros.



CEO. BISHOP, ENG. & PTG. CO. MONTREAL.

PROPOSED NEW BRIDGE ACROSS ST. LAWRENCE RIVER AT CAPE ROUGE.



HON. DAVID A. ROSS

HON. PIERRE GARNEAU
Minister of Crown Lands

HON. ARTHUR TONNETY

HON. HONORE MERCIER
PREMIER

HON. JAMES MCSHANK
MEMBER OF TRADE UNION AND AGRICULTURE

HON. JOSEPH SHEELIN
PROVINCIAL TREASURER

HON. GEORGES DUHAMEL
ATTORNEY GENERAL

HON. CHARLES A. F. GAGNON
PROVINCIAL SECRETARY



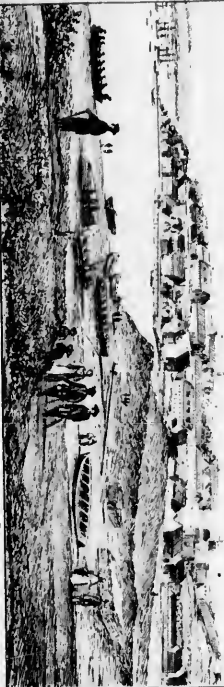
MONTMORENCY FALLS



MEMBERS OF THE CABINET OF THE QUEBEC PROVINCIAL GOVERNMENT,



MONTCALM.



The South West Part of the City of Quebec, taken from St. Charles River, 1759.
Le Sud-Ouest de la Ville de Québec vue prise de la Rivière St. Charles, 1759.



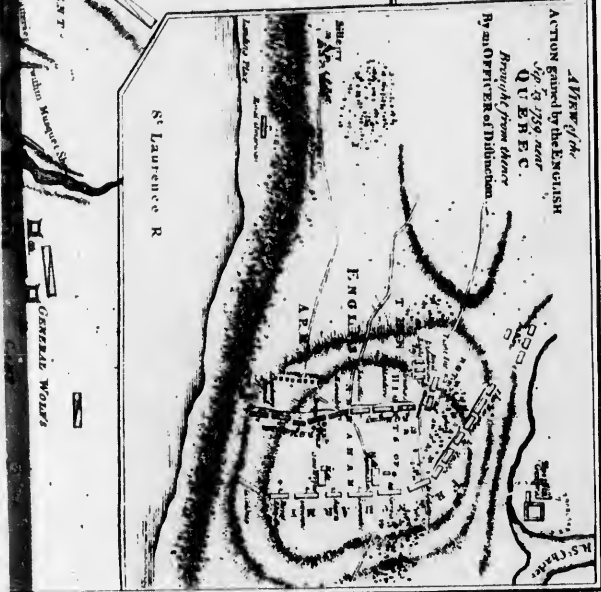
The Treasury and Jesuits College after the siege, 1759.
La Trésorerie et le Collège des Jésuites après le siège, 1759.



Part of the
Upper River of
ST. LAWRENCE.



FRENCH INTENDANT'S



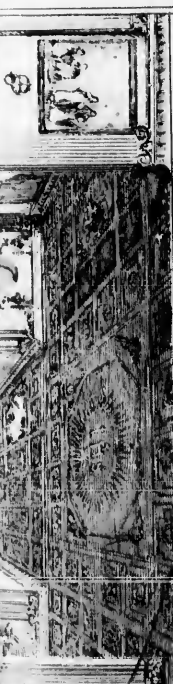
A View of the
ACTION gained by the ENGLISH
Up to 1759 near
QUEBEC.
By an OFFICER of Distinction.

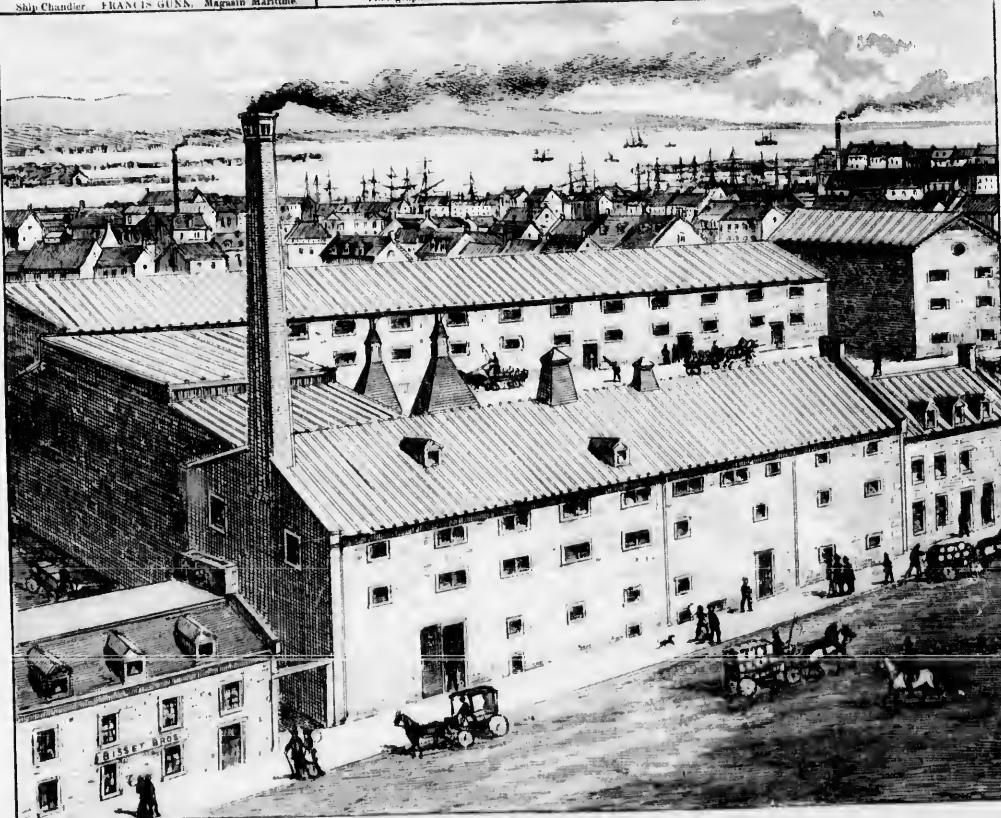
St. Lawrence R

GENERAL WOLFE'S



General View of Quebec, from Point Levy, 1759.
Vue générale de Québec, prise de la Pointe Lévy, 1759.





ROSWELL'S BREWERY



LA BANQUE DU PEUPLE



BANK OF MONTREAL



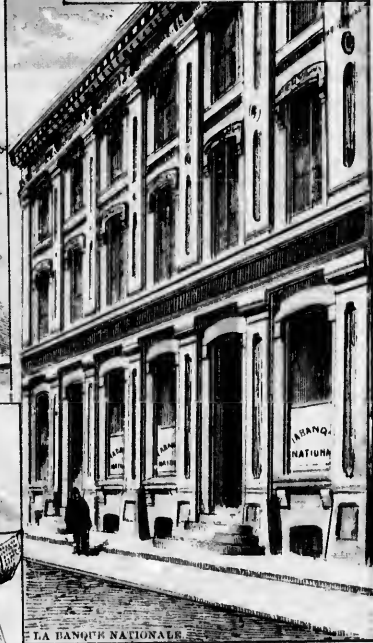
UNION BANK OF CANADA



BANK OF BRITISH NORTH AMERICA



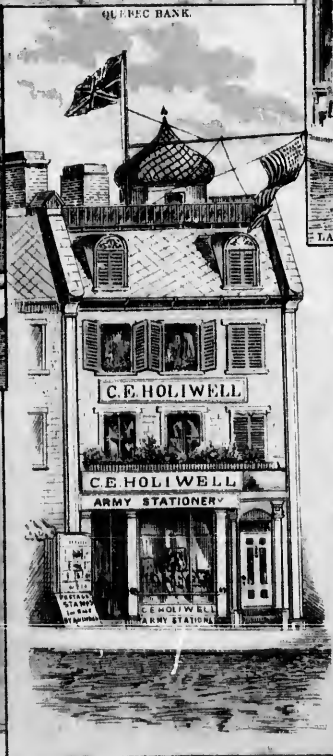
QUEBEC BANK



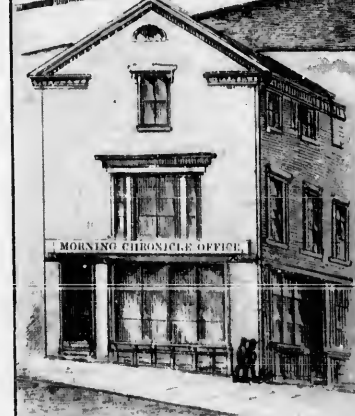
LA BANQUE NATIONALE



MERCHANTS BANK OF CANADA



C. E. HOLIWELL, Army Stationer



QUEBEC MORNING CHRONICLE OFFICE, J. J. Esote, Publisher



LE CANADIEN, L. J. Demers & Frere, Publisher

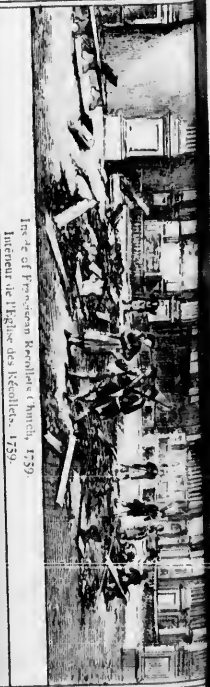


VIEW BEFORE QUEBEC IN 1759.

This view of the lower St. Lawrence River and the city of Quebec, taken from the point of view of the St. Charles, is a reproduction of the original drawing by M. de la Potherie, which is preserved in the collection of the St. Charles. A note is printed on the original drawing, which reads: "M. de la Potherie a été chargé de faire un plan de la ville de Québec, en 1759, par ordre de M. de la Potherie, Intendant de la Nouvelle-France." The original drawing is now in the possession of the St. Charles.

The view of the lower St. Lawrence River and the city of Quebec, taken from the point of view of the St. Charles, is a reproduction of the original drawing by M. de la Potherie, which is preserved in the collection of the St. Charles. A note is printed on the original drawing, which reads: "M. de la Potherie a été chargé de faire un plan de la ville de Québec, en 1759, par ordre de M. de la Potherie, Intendant de la Nouvelle-France." The original drawing is now in the possession of the St. Charles.

J. M. L.



Interieur de l'Eglise des Récollets, 1759.



Eglise Notre-Dame de la Victoire, l'Etat en 1759, après le siège de 1759.



Palais de l'Intendant, l'Etat en 1759, après le siège de 1759.



THE LIEUT. GOVERNORS RESIDENCE, SPENCER WOOD.

HON. LOUIS FRANCIS RODRIQUE MASSON,
Lieut. Governor of the Province of Quebec.



THE NEW PARLIAMENT HOUSES.



THE OLD PARLIAMENT HOUSES.



THE OLD COURT HOUSE.



THE NEW COURT HOUSE.





CENTRAL FIRE STATION



HONORABLE FRANCIS LANDELLE
MAYOR



POLICE STATION



R. F. GAUTHIER



WILLIAM M. WILLIAM



H. J. E. GOUINARD



HONORABLE JOHN HEARN



JOSEPH P. MONSON



F. FERDINAND LECLERC



CYRILLE DUQUET



CITY HALL



ELZEAR VINCENT



H. LES TESSIER.

FRANCIS GINN

EDWARD T. D. CHAMBERS

WILHELM MILLER

GUILLAUME BOUCHARD

J. C. AYLIW

J. P. BHEAUME

MATTHEW MILLER

FERDINAND BELLE

D. GEAY.

JOS. JEAN BARBEAU

PITREAS BELAND

L. J. DEMERS

JOHN KAINE.

JAMES MURPHY.

L. A. CANNON, CITY CLERK.

R. H. MCGREEVY.

C. J. LA FRANCE, CITY TREASURER

GEO. BISHOP ENG & PTC. CO MONTREAL

ALDERMEN AND COUNCILLORS.
QUEBEC



Wholesale Grocer. J. B. E. LTELIER. Epicerie en Gros.



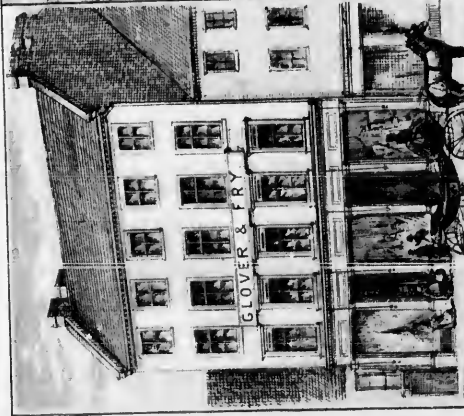
Wholesale Grocers. N. RIOUX & Co. Epicerie en Gros.



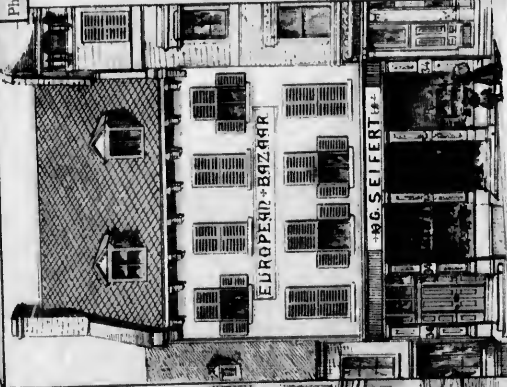
Photographer, LIVERPOOL.



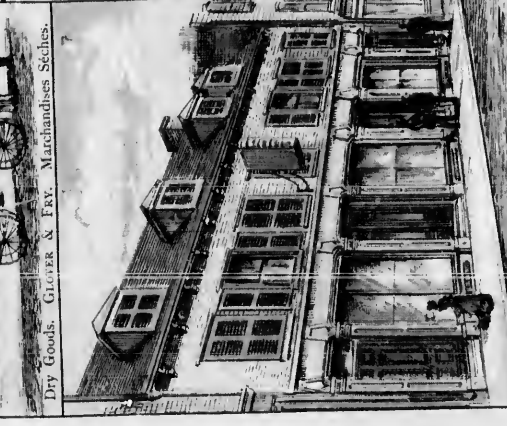
Carpenter. A. B. DUPUIS. Carpentier.



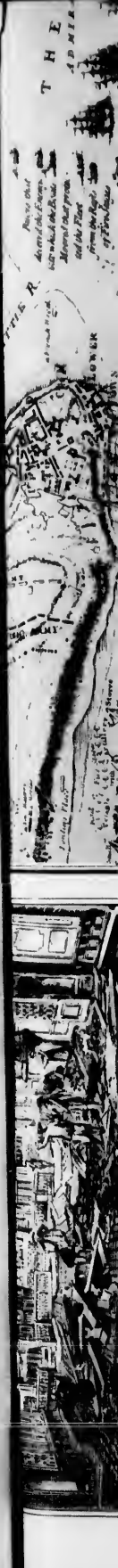
Dry Goods. GLOVER & FRY. Marchandises Sèches.



European Bazaar. G. SHIFFERS. Bazaar Européen.



Bookseller. J. A. LANGEAIS. Libraire, Editeur.



Wholesale Grocers, N. ROOT & Co. Epicerie en Gros.

Contéger A. P. DE VINCENNES

European Bazaar, G. SHIFFERTS Bazaar Européen.

Bookseller, J. A. LANGLOIS, Libraire, Editeur.



Intérieur de l'Eglise des Jésuites, 1759.



Le Collège et la Chapelle des Jésuites, 1877. Le Collège fut démolit en 1877 et la Chapelle, en 1887. Collège demolished in 1877. Chapel in 1887.



Bishop Saint Vallier's old Palace, site of former Parliament House, with Wall and Gate, 1859. Le Palais de l'évêque, site de l'ancien parlement, avec mur et porte existants, 1859.



AN AUTHENTIC PLAN
of the
RIVER ST. LAURENCE
from
which the Operations of the
SIEGE OF QUEBEC
under the Command of
Vice-Admiral Saunders & Major-General Wolfe
down to the 5th Sep 1759.
Drawn by a CAPTAIN in his Majesty's Navy.

PLAN OF THE OPERATION

This elaborate plan of the naval operations before Quebec, during the summer of 1759, is a fac-simile of the one to be found in the large and valuable work of Thomas Jefferys, Geographer, to H. K. Hughes, the Prince of Wales, in 1761. It appears to have been drawn by a Captain in the Royal Navy and does not form part of the twelve views sketched on the spot by Purser Short and mentioned as follows, at page 476 of HAWKINS, PICTURE OF QUEBEC, published in 1834.

“Twelve views of the principal buildings in Quebec from drawings taken on the spot, at the command of Vice-Admiral Saunders, by Richard Short, Purser of His Majesty's Ship the LANCE, of Oronoko, published in 1761, and two gunners. There was also six large views drawn by Captain Harvey Smith, on board the VANDERARD Man of War. Captain Smith is mentioned as being one of the Aide-de-camp to General Wolfe.

The most formidable work of defence under French rule was the Battery between St. Louis and St. John's Gate.

skipped the "CLEREA EN BARRERIE," its armament consisted of the "Sally and Mable" (Sally's resp) battery carried; 71 its old 32 pounders and some mortars.

The Hospital (Hotel Dieu) Battery was defended by 2 jetties erected in the St. Charles about 1753; the site of which was protected by a 24 gun battery, which were pointed through a jetties.

There were two recently built batteries of 3 guns each shipyard, in the lower town, facing Lévis, on Champlain St. were three batteries, the Royal, the Dauphin, and a new one.



COUVANT DE JÉSUS MARIE.



MORRIN COLLEGE.—Protestant.



LAVAL UNIVERSITY.



S. JOSEPH'S SCHOOL.—Protestant



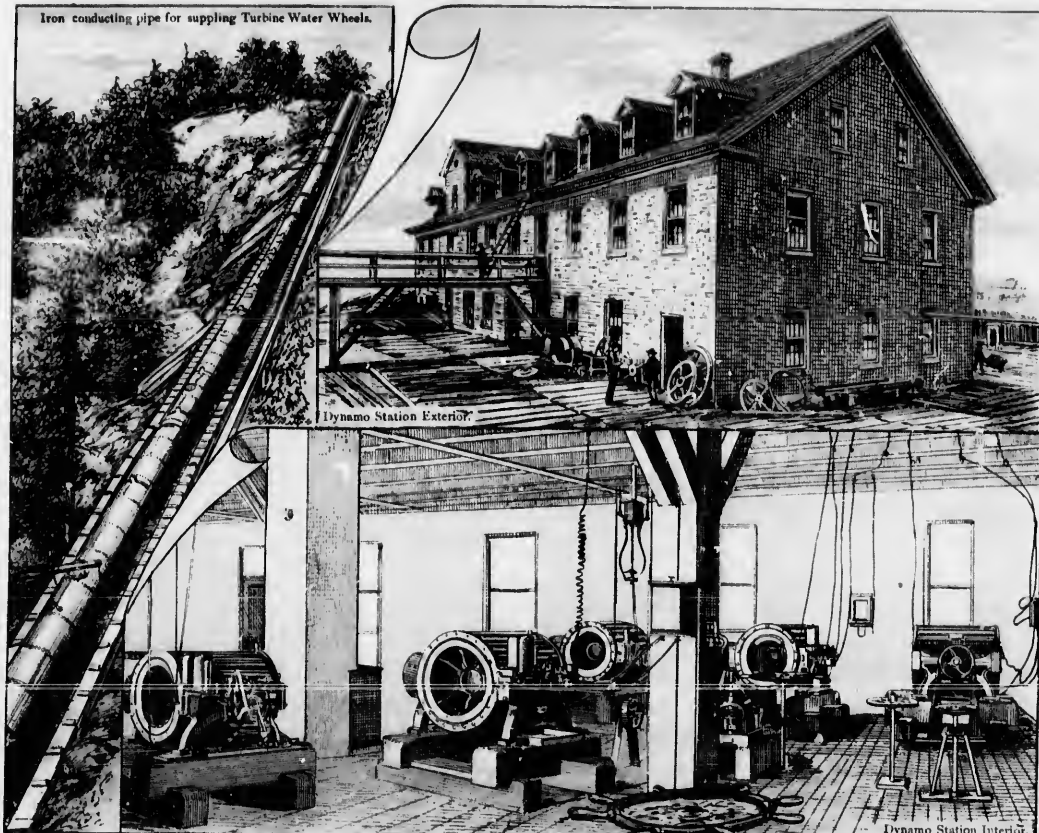
S. MARY'S HIGH SCHOOL.—Protestant

EDUCATIONAL.



MONTMORENCI MILLS.

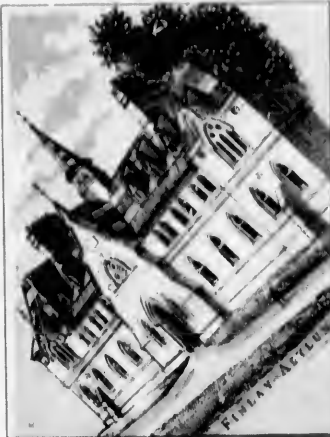
Iron conducting pipe for suppling Turbine Water Wheels.



Dynamo Station Exterior.

Dynamo Station Interior.

QUEBEC & LEVIS ELECTRIC LIGHT CO.



FISHERIES BUILDING



NEW POST OFFICE



V. M. C. A. BUILDING



OLD POST OFFICE



MONTCALM'S MONUMENT



MUSEUM HOUSE



WOLFE'S MONUMENT



NEW EXAMINING WAREHOUSE



GARRISON CLUB



BEAUFORT ASYLUM

PUBLIC BUILDINGS.



C. A.
EDING



MONUMENT



ASYLUM

GRAND TRUNK Railway of CANADA

The Great INTERNATIONAL ROUTE ^{Between} THE EAST & WEST.

