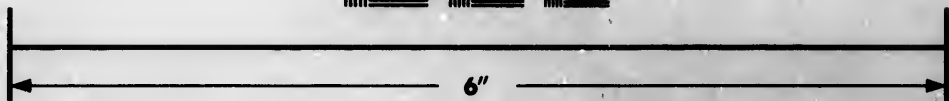
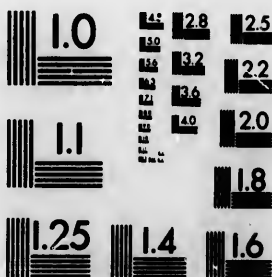
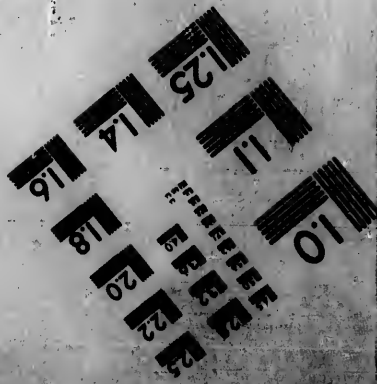
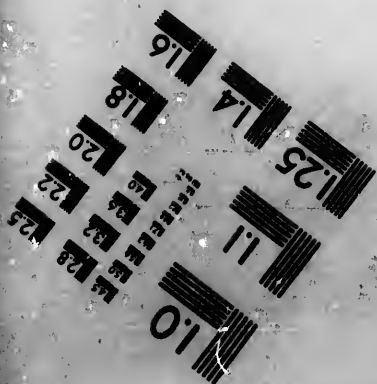


**IMAGE EVALUATION
TEST TARGET (MT-3)**



**Photographic
Sciences
Corporation**

23 WEST MAIN STREET
WEESTER, N.Y. 14580
(716) 872-4503



**CIHM/ICMH
Microfiche
Series.**

**CIHM/ICMH
Collection de
microfiches.**



Canadian Institute for Historical Microreproductions / Institut canadien de microreproductions historiques

© 1983

Technical and Bibliographic Notes/Notes techniques et bibliographiques

The institute has attempted to obtain the best original copy available for filming. Features of this copy which may be bibliographically unique, which may alter any of the images in the reproduction, or which may significantly change the usual method of filming, are checked below.

L'Institut a microfilmé le meilleur exemplaire qu'il lui a été possible de se procurer. Les détails de cet exemplaire qui sont peut-être uniques du point de vue bibliographique, qui peuvent modifier une image reproduite, ou qui peuvent exiger une modification dans la méthode normale de filmage sont indiqués ci-dessous.

- Coloured covers/
Couverture de couleur
- Covers damaged/
Couverture endommagée
- Covers restored and/or laminated/
Couverture restaurée et/ou pelliculée
- Cover title missing/
Le titre de couverture manque
- Coloured maps/
Cartes géographiques en couleur
- Coloured ink (i.e. other than blue or black)/
Encre de couleur (i.e. autre que bleue ou noire)
- Coloured plates and/or illustrations/
Planches et/ou illustrations en couleur
- Bound with other material/
Relié avec d'autres documents
- Tight binding may cause shadows or distortion along interior margin/
La reliure serrée peut causer de l'ombre ou de la distortion le long de la marge intérieure
- Blank leaves added during restoration may appear within the text. Whenever possible, these have been omitted from filming/
Il se peut que certaines pages blanches ajoutées lors d'une restauration apparaissent dans le texte, mais, lorsque cela était possible, ces pages n'ont pas été filmées.
- Additional comments:
Commentaires supplémentaires:

- Coloured pages/
Pages de couleur
- Pages damaged/
Pages endommagées
- Pages restored and/or laminated/
Pages restaurées et/ou pelliculées
- Pages discoloured, stained or foxed/
Pages décolorées, tachetées ou piquées
- Pages detached/
Pages détachées
- Showthrough/
Transparence
- Quality of print varies/
Qualité inégale de l'impression
- Includes supplementary material/
Comprend du matériel supplémentaire
- Only edition available/
Seule édition disponible
- Pages wholly or partially obscured by errata slips, tissues, etc., have been refilmed to ensure the best possible image/
Les pages totalement ou partiellement obscurcies par un feuillet d'errata, une pelure, etc., ont été filmées à nouveau de façon à obtenir la meilleure image possible.

This item is filmed at the reduction ratio checked below/
Ce document est filmé au taux de réduction indiqué ci-dessous.

10X	12X	14X	16X	18X	20X	22X	24X	26X	28X	30X	32X
				✓							

The copy filmed here has been reproduced thanks to the generosity of:

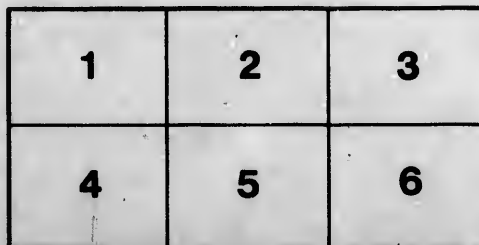
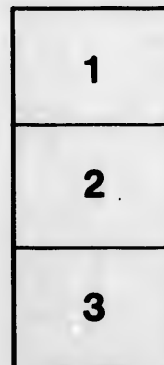
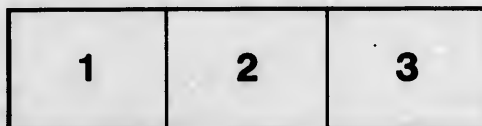
Library of the Public
Archives of Canada

The images appearing here are the best quality possible considering the condition and legibility of the original copy and in keeping with the filming contract specifications.

Original copies in printed paper covers are filmed beginning with the front cover and ending on the last page with a printed or illustrated impression, or the back cover when appropriate. All other original copies are filmed beginning on the first page with a printed or illustrated impression, and ending on the last page with a printed or illustrated impression.

The last recorded frame on each microfiche shall contain the symbol \rightarrow (meaning "CONTINUED"), or the symbol ∇ (meaning "END"), whichever applies.

Maps, plates, charts, etc., may be filmed at different reduction ratios. Those too large to be entirely included in one exposure are filmed beginning in the upper left hand corner, left to right and top to bottom, as many frames as required. The following diagrams illustrate the method:



L'exemplaire filmé fut reproduit grâce à la générosité de:

La bibliothèque des Archives
publiques du Canada

Les images suivantes ont été reproduites avec le plus grand soin, compte tenu de la condition et de la netteté de l'exemplaire filmé, et en conformité avec les conditions du contrat de filmage.

Les exemplaires originaux dont la couverture en papier est imprimée sont filmés en commençant par le premier plat et en terminant soit par la dernière page qui comporte une empreinte d'impression ou d'illustration, soit par le second plat, selon le cas. Tous les autres exemplaires originaux sont filmés en commençant par la première page qui comporte une empreinte d'impression ou d'illustration et en terminant par la dernière page qui comporte une telle empreinte.

Un des symboles suivants apparaîtra sur la dernière image de chaque microfiche, selon le cas: le symbole \rightarrow signifie "A SUIVRE", le symbole ∇ signifie "FIN".

Les cartes, planches, tableaux, etc., peuvent être filmés à des taux de réduction différents. Lorsque le document est trop grand pour être reproduit en un seul cliché, il est filmé à partir de l'angle supérieur gauche, de gauche à droite, et de haut en bas, en prenant le nombre d'images nécessaire. Les diagrammes suivants illustrent la méthode.

D

A

TH

Fro

V
A
C
a
t

==

DESCRIPTION

OF THE

COAST, TIDES, and CURRENTS,

IN

BUTTON'S BAY,

And in the *WELCOME:*

BEING

The North-West Coast of *Hudson's Bay*,
from *Churchill River*, in $58^{\circ} 56'$ North La-
titude, to *Wager River* or Strait, in $65^{\circ} 24'$
taken from *Scrog's*, *Crow's*, *Napier's*, and
Smith's Journals, made in the Years 1722,
1737, 1740, 1742, 1743, and 1744.

ALSO,

From the Discoveries made in 1742, in the
Voyage in the *Furnace Bomb*, and *Discovery*
Pink, commanded by Captain *Middleton* and
Captain *Moor*; shewing from these Journals,
a Probability, that there is a Passage from
thence to the Western Ocean of *America*.

DUBLIN:

Printed in the Year M,DCC,XLVI.

—
—
D

Co
B
be
B
L
6
pi
Y
17
17
an
M
th
Pa
A

E
59° 9
by C

A

DESCRIPTION

O F T H E

COAST, TIDES, and CURRENTS in *BUTTON'S BAY*, and in the *WELCOME*; being the North-West Coast of *Hudson's Bay*, from *Churchill River* in $58^{\circ} 56'$ North Latitude, to *Wager River* or Strait in $65^{\circ} 24'$ taken from *Scrog's*, *Crow's*, *Napier's*, and *Smith's* Journals, made in the Years 1722, 1737, 1740, 1742, 1743, and 1744. Also, from the Discoveries made in 1742, in the Voyage in the *Furnace Bomb*, and *Discovery Pink*, commanded by Captain *Middleton* and Captain *Moor*; shewing from these Journals a Probability, that there is a Passage from thence to the Western Ocean of *America*.

ESKIMAUX Point, on the West Side of the Entrance of *Churchill River*, by Captain *Smith's* Journals, is in Latitude $59^{\circ} 94'$ West Longitude from *London*; but by Captain *Middleton's* Observation, is in 95°

A 2

West

West Longitude from *London*. There, a W. N. W. Moon makes High-Water, which is at 7^h 30' at Change and Full Moon. The Main Land to Northward is a Low Land; to Westward of this River, is a large Bay which runs into the Southward, several Miles wide and deep, the Variation here is about 20. West or one Point and $\frac{1}{4}$ West: There is a small River in 59° 26', called by the Natives, *Porotbinkisco* River, from thence to 60°, the Coast continues straight and low, lying N. by E. true Course. Here the River of *Seals* enters the Sea, being the most northerly River known upon that Coast; it comes some hundred Leagues from the South-westward, according to Monsieur *Fermie's* Account, when the *French* were possessed of Fort *Bourbon* now *York Fort*, on *Nelson* or *Haye's* River, according to the Account given to him by the *Indians*.

By this River many of the Northern *Indians* bring their Furs and Peltry to *Churchill* Factory in small Canoes.

Near this River, in about 60°, is a Ridge or Reef of Stone, which runs into the Sea three Leagues; bare at Low-Water, which is dangerous, and must be carefully avoided. The Coast North of this River is barren, and without Wood; *Scrogs* sent his *Indians* ashore thereabouts, to look for a fine Copper Mine, which the *Indians* go frequently to, in order to get Copper for Ornaments to their Wives, which they sometimes brought to the Factory, and said it was upon the Sea-shore Northwest of *Churchill*;

bill; but they found no Signs of it near that Latitude. Here are many Seals, and many Sea-Horses or Morfes, whilst the Ice continues, which the *Indians* kill for their Ivory and Oyl.

The Coast from the River of Seals to Cape *Eskimaux* in $61^{\circ} 26'$ is mostly low, with some round Hills near the Coast; which continues to lye from North by East, to South by West. Cape *Eskimaux*, is about $0^{\circ} 48'$ Longitude East of *Churchill*: This Coast so far, is known to be Part of the Continent of *America*.

To the Southward of this Cape, Captain *Smith*, in *July* 1744, found a fine Bay or Inlet, which he called *Knap's Bay*; it was Landlock'd all around, except two Points of the Compass, with Land and Shoals dry at half Tide; the Cape bore from the Bay East half South, the Eastermost Point he called *Sutter's Point*. He sail'd into this Bay the 8th of *July*, 1744, in his Sloop, three Leagues; he had never less in the Mid-channel than ten Fathom Water, and had four Fathom near the dry Beach on each Side; it continued two Miles wide as far as he went, and the same depth, having gone several Leagues higher in his Boat, and found the Course continue W. S. W. as far as he could see from the Boat. The Water was clear and salt, having no Symptom of its being a Fresh-water River; here he caught several Salmon; he found no Current or Tide setting in, or out, altho' it flow'd ten Feet each Tide: Here a West Moon made High Water, that is six o'Clock at Full and Change; the Variation here is two Points and $\frac{1}{4}$ West, or about 25° .

Cape *Eskimaux* had been accounted Part of the Main Land, but when he went into this Bay or Inlet, he found it was made up of several Islands, he seeing two or three Channels running to Northward, which discontinued it from the West Land.

From his Observation of the Tide's rising ten Feet, and yet no Tide setting in or out of the Bay or Inlet, it must have a Passage some other Way, to raise so high a Tide, which must consequently come thro' these Channels to Northward, or some other from the Westward, behind Cape *Eskimaux*; which is a Proof of its being a broken Coast to Northward, and no Part of the Continent. This is further confirmed by the Tide's still flowing later, the further it goes Southerly into *Hudson's Bay*; for at *Whale-Cove* in $62^{\circ} 30'$, a W. S. W. Moon makes High Water at $4^{\text{h}} 30'$, at Full and Change; at Cape *Eskimaux*, in $61^{\circ} 26'$, a West Moon, at six o'Clock; at *Churchill* in 59° a W. N. W. Moon at $7^{\text{h}} 30'$; and at *Port Nelson* in 57° a North West Moon at nine o'Clock; The Current of Flood sets also Southwardly along all that Coast, there being only a small Current of Ebb, that sets Easterly $\frac{1}{2}$ a Mile from the Shore. All other Observations also confirms its being a broken Coast to Northward, there being no High Lands seen to Westward, nothing but Bays or Inlets, and low Islands, nor are there any Trees or Shrubs seen along the Coast, or any Sign of a Fresh Water River. To the Northward of this, as far as *Wager Strait*, great Numbers of true black Whales

Whales are annually seen, and caught by the *Eskimaux Indians*, tho' none are seen in *Hudson's Bay*, or *Strait* : The Company sending every Year a Sloop to *Whale-Cove* to trade with the *Indians* for Whale-Finn, and Oyl : The *Eskimaux Indians* also fishing, and frequenting this Coast from *Cape Eskimaux* every *Summer*, confirms its being all Islands ; for they never dare land on the Main, for fear of their constant Enemies the Northern *Indians* ; who by their constant Use of Fire-Arms, constantly defeat them, if they meet them on the Main ; but for want of Boats can't follow them to the Islands.

The Coast from *Cape Eskimaux* to 62° , runs Northerly, with some rising Hills near the Coast ; at four or five Miles Distance from the Coast is a small Isle call'd *Centry-Isle*, lying in $61^{\circ} 36'$ — ; North East of it in $61^{\circ} 58'$ is another small Isle call'd *Knights-Island* $1^{\circ} 6'$ Long. East from *Churchill* ; North West from that Isle, at three or four Miles Distance, is *Sir Biby's-Island*, about three Leagues long from North to South, and a League broad ; here the *Eskimaux Indians* have frequently a Quantity of Whale Finn, Oil, and Ivory. Five Leagues East of this is a small Island, call'd, *Merry's-Isle*, and a League North East of it *Jones-Isle*, a small Island ; and five Leagues N. E. of it, *Sea Horse-Isle*, in $62^{\circ} 10'$ Lat. and $2^{\circ} 30'$ Long. East from *Churchill*.

Among these Islands there is no true Judgment to be made of the setting of the Tide, by Reason of the Eddy Tides, only in general, that the Tide of Flood sets to Southward along the

Coast ; Here Captain *Smith* found a Current which set him twenty Miles to Southward of his Reckoning. Among these Islands *Scrogs* saw several Whales, and Captain *Smith* saw four Whales to Northward of them, and one to Southward ; the suppos'd main Land North of *Cape-Eskimaux* is at least five Leagues West of *Sir Biby's* Island ; Captain *Smith* in sailing ten Miles West of this Island, had seventeen Canoes came on Board him with Oil, and returned to an Island they lived in four Miles West of the Place he anchor'd in ; this he called *Hope-Bay*, from the Expectation he had that a good Trade might be found thro' it to the Westward ; for North West of it he saw no Land, but expected an Inlet there.

Whale-Cove so called, as given out, from a Whale's having carried one of the Companies Sloops to Sea, by its Tail's getting foul of the Anchor and Cable ; to which Place every Year since, the Company sends a Sloop to trade with the *Eskimaux* for Whale Finn, and Oil, is an Island situated in $62^{\circ} 26' . 1^{\circ} 21'$ Long. East from *Churchill*, 37 Miles N. N. E. $\frac{3}{4}$ East from *Knight's-Island* ; the Cove or Harbour is on the W. S. W. Side of the Island, and lies in E. N. E. there is a small Island West of the Cove, the best Entrance is on the South Side of it ; the Cave is three hundred Yards long, and two hundred wide, five or six Fathom clean Ground ; the Isle is barren and rocky, with Moss and some Grass ; on the East Side of the Island is a lesser Island, with a narrow but deep Channel, betwixt them, about two hundred Yards wide,

wide, thro' which the Tide flows from the Northward ; on these Islands are many Rain Deer, four or five Miles S. W. of *Whale-Cove*, is a small Island call'd *Mistake-Isle*, and North of that two Leagues another, call'd *Eskimaux-Isle* ; the Variation here is 33° . or three Points West. West of these, is a large Bay or Opening, from the Rocks above *Whale-Cove*, Captain *Smith* could see nothing to Westward, but small low Islands, and broken Land : He had thirty-seven Canoes on Board him at one Time with Finn, and Oil, they generally return'd to the Westward or South-Westward, and some to North-Westward ; they have generally but one Person in a Boat, which are made like a *Greenland Boat*, with a Hole in the Middle, in which they put their Legs and lower Part of their Body, and tie the Skin which covers the Boat, round their Middle, so that no Water can enter if they should overfet, and the Boat being shap'd like a Shuttle, they will Paddle as fast as a Pinnace with six Oars. When they carry their Families from Island to Island, they lash many of these together in a Float, and paddle on the Outside of each Float.

Captain *Smith* sail'd some Miles to Westward of *Whale-Cove*, but saw no Land to North-Westward : The *Indians* by Signs let him know, that if he would go with them to Westward, he would get a much better Trade, and would have him send his Boat with them ; but he durst not trust his Boat from his Sloop, and would not venture his Sloop among unknown Islands contrary to his Instructions, from the Company, who permitted him to go no farther than *Whale-Cove*,

Cove, nor to stay there above a Fortnight ; and therefore allow'd him no more Provisions than for his limited Time ; and upon his Return, when he applied for Liberty to Trade further Westward, by which he would Improve their Trade, instead of encouraging him, they ask'd him if he wanted to make Discoveries, and look'd coldly on him for desiring it.

The *Indians*, when they left him at *Whale-Cove*, told him they would go to bring more Trade, and would stay away three Nights, but they did not return in that Time, and he could wait no longer for them.

To the Northward of *Whale-Cove* Island, is another large Bay or Opening, call'd by *Scrogs Pistol-Bay*, this Bay is South West of *Marble-Island*, where Captain *Middleton* watered his Ships upon their Return from *Wager-Strait*, from whence he proceeded for *England*, it is situated in 63° N. Lat. $0^{\circ} 20'$ East of *Churchil*, by Captain *Middleton's* Journal. *Pistol-Bay* is in $62^{\circ} 40'$ and about $10^{\circ} 40'$ Long. East from *Churchil*, which is about seventeen Leagues Westward of *Marble Island* ; so that this Bay was certainly the Opening observed by Lieutenant *Rankier*, from the High Lands in *Marble-Island*, which he desir'd Captain *Middleton* would let him go, to discover it, which the Captain refused, and immediately set sail for *England* on the fifteenth of *August*.

Crow and *Napier* sent one of their Boats to Northward into *Pistol-Bay* in 1737, when they were in *Whale-Cove*, to look out for a Harbour
in

in Case they sail'd that Way ; when they had got to ten Miles Distance from the West Point of *Pistol-Bay*, W. N. W. which Variation allowed is West by South from it, they came to an Island which was low and Sandy, with some Grass upon it, and four Miles farther West, to another Island small and rocky, but found no Harbour, which they were directed to look for; nor did they mention any other Land, or Ice, to obstruct their going farther, tho' they pretended they were kept in *Whale-Cove* by the Ice.

Scrogs endeavouring to make this Bay upon his Return from *Whale-bone Point* in 1722, after stopping at *Marble Island*, had Soundings from fifty to seventy Fathoms, in $62^{\circ} 31' N.$ Lat. and $2^{\circ} 35' East$ Long. from *Churchil*, and then saw a Cape he call'd *Cape Fair-way*, four Leagues North West of him. It was thro' this Bay or Inlet, that *Vaughan* and *Barlow* expected to find the Passage in the *Albany* in 1720, when they oblig'd the Company, tho' very unwillingly, to allow them to attempt it, but as one, or both their Ships were lost, or surpriz'd by the *Indians* hereabouts, either in going out, or upon their Return, in wintering ; for no Person on Board having ever since been heard of, it can't be known whether one, or both, were lost, or whether before or after making any Discovery ; but *Scrogs* having seen some broken Masts, and floating Rigging hereabouts in 1722, when he was sent to know what was become of them ; and after his Return from the *Welcome* to *Marble-Island*, having seen there several Yards split into Tent-Poles, and Tents covered with Sails,

Sails, and a Copper Pot, and the *Indians* having there so much Iron that they would Trade with them for no Iron, but Sword-Blades, it seems evident that one Ship was lost, or surpriz'd by the Natives ; and is also a strong Presumption that they expected to find the Passage by this Inlet.

These Islands near *Whale-cove*, are what Captain *Fox* upon his Voyage called *Brigg's* Mathematicks, a Number of low Islands which he saw in sailing Southerly, from *Brook Cobham* or *Marble Island*, where he says he found the Tide had left him, and began to follow him down the Bay, here he was satisfied he lost the Passage, but was obliged to follow his Instructions, which was to search down all the West Side of the Bay.

There is but an imperfect Account given of the Coast, from *Pistol Bay* to *Marble Island*. *Scroggs* only saw one Headland North West of him, which he called *Cape Fair Way*; so that it appears to be broken Land or Openings and Islands betwixt that Bay and the Island, which is about seven Leagues long, from East to West, on the South Side there is a fine Cove, a small Island lying before it, which breaks off all Winds from its Entrance; it is three Fathom deep at the Entrance, and fifteen to twenty Fathom within, being land-lock'd from all Winds; the Tide of Flood came here from the Westward, and a West Moon made high Water. *Scroggs* called a Hill upon this Island *Pits Mount*, and the East Point *Whalebone Bluff*. There are many Deer upon this Island, it is about three Leagues from

from the broken Land to the Westward, or Opening which *Rankin* saw. Hereabouts *Scroggs* saw many black Whales and traded with the *Indians* for green Bone just taken, it lies exactly in 63° .—North of this is a Headland in 63° . $20'$, near which Captain *Middleton*, in his Return from *Wager Strait*, and *Repulse Bay*, upon standing in close to the Head land, saw several large black Whales; and Captain *Fox* much about the same Place, saw many black Whales, forty sleeping together, as his Boat rowed ashore.

North East of this in 63° . $35'$, and 5° . $4'$ East Long. from *Cchurchill*, *Scroggs* made Land, and found the Current set several Ways among the Islands, North of *Pistol-Bay*; he calls it the Main, but says, from the Number of little craggy Islands a Mile from the Shore, he could not get near enough to discover the Coast. Here he found some small shattered Ice on the 8th of *July*; he next Day fell in with the South East Side of the *Welcome*, in 64° . $10'$, saw fourteen small Isles on that Coast he called *Kelsy's Desires*, and high firm Land behind them; this is the Main Land North of *Cary's Swan's-Nest*. After four Days beating, he fell in with *Whalebone-Point* in 64° . $56'$.— 9° . $6'$ East of *Cchurchill*; there he saw many black Whales, and several Islands North West of him, and a Headland made up of Islands South-west of him, which he called *Cape Fullerton*, in about 64° . $10'$; but to Westward saw no Land; here it flowed upon his Lead Line when at Anchor five Fathoms; he staid there three Days from the 9th to the 12th, sent Mr. *Norton* ashore in his Boat, who from the High Lands saw an open Sea to Southward

ward of the West ; he sailed on the 12th, and on the 14th, the Tide of Flood forced him close to the East Shore ; which is a Proof that the Tide flowed there from the Westward.

This West Coast from *Marble-Island* to *Whalebone Point*, was never looked into by Captain *Middleton* in his Voyage from *Cburchill* ; when he got near *Cape Fullerton* in about 64° . He fell in with shattered Ice, near the Coast, and drove to Eastward, until he got in with the East Coast, seeing no Land on the West Coast, until he came near *Cape Dobbs* in $65^{\circ}.10'$. which Cape was to North East of *Whalebone Point* ; and seeing an Opening North West of it, he sailed into it, only with a View of sheltering his Ships, until the Ice was dissolved ; intending again to sail North Eastward ; not once designing to look into any Place for a Passage to the Westward ; when he got into this Strait, which he said was a fresh Water River, though from six or seven Miles wide at Entrance, and fourteen Fathoms Depth, in which was a great deal of Ice, forced in by the Easterly Winds, he found it increase after he had gone twelve or fourteen Leagues into it, North Westward, to ten or twelve Leagues wide, and at least seventy Fathoms deep ; having no Ground with a Line of sixty-eight Fathom, where it was entirely free from Ice, and Salt Water, and many black Whales were seen at that Height within it, and yet none seen below or without the Strait, the Water continuing Salt even thirty Leagues up the Strait ; and a large open Channel at least five or six Leagues wide, as far as could be seen to South-westward
from

from a very high Mountain, for near twenty Leagues W. S. W. with broken Lands on each Side, with a Tide of Flood coming from the Westward, yet this he would impose upon the Publick for a Fresh-Water River; and what was seen from the Mountain was only Fresh-Water Lakes, with Water-falls or Cataracts falling from it, into the River where the Ships lay; because a Rippling was seen betwixt an Island and a low Point through which the Tide had a rapid Course, yet all beyond these Islands, where the Channel was five or six Leagues wide, was upon a Level, and united with the Strait in which the Ships lay, yet upon this Discovery's being made, and reported to him under the Hands of the Lieutenant and Master, he, without consulting his Officers, sailed out of his River, and went away North Easterly to look for the Passage, until he was embayed in *Repulse Bay* in $66^{\circ}. 40'$. and then went ashore, and gave out that he saw a Strait, close frozen over from Side to Side, five or six Leagues wide, and eighteen Leagues long, running South-East into *Hudson's Strait*; yet this he was obliged to make his Passage for the Whales, and Tide to flow through, which raised all the Tides on the West Side of the Bay; he having allowed that no Whales came in through *Hudson's Strait*, or were seen in other Parts of the Bay, all that were seen being only amongst the Inlets, and Islands, on the North-West Side, from 62° . near Cape *Eskimaux* to $65^{\circ}. 40'$. in *Wager Strait*.

When he returned from his pretended frozen Strait, which was only a small Channel three Leagues

Leagues wide, surrounding the Island he was upon; he kept at a Distance from the Bays or Inlets South of *Wager Strait*, scarcely seeing the Tops of the Mountains at a great Distance, for he only stood in at the Headlands of *Cape Fullerton* in $64^{\circ}. 10'$, and near *Brook Cobham* in $63^{\circ}. 20'$, where he saw the Whales, not being able to distinguish whether the Bays between them were Inlets and Islands, or Part of the Main; and then anchored at *Marble Island* in 63° . where he watered his Ships, and proceeded for *England* the 15th of *August*; never once trying the Tides in his going out, or Return, except incorrectly when at Anchor in *Savage-Cove*, in *Wager Strait*, and very slightly when he was ashore at his frozen Strait; having been only forty-five Days upon his Discovery, of which Time he was about twenty-eight Days at Anchor in *Wager Strait*, and *Marble Island*; only seventeen being employed in the Discovery. His whole Course and Discovery being to North-East; except when he was forced into *Wager Strait*. However, he could not well avoid knowing the Tide, for three Weeks and upwards he was at Anchor in *Wager Strait*, and found, that both at the Entrance, and as high up as *Deer-Sound*, twelve or fourteen Leagues within the Strait, that a West Moon made high Water, and that it flowed there fourteen or sixteen Feet; though those who were on board said it was taken very incorrectly, for they had Reason to believe it flowed much more at *Deer-Sound*, by their Observations ashore. He took it by setting up a Pole fifteen Feet long, at low Water Mark, supported by a Heap of Stones; at high Water the Pole was covered, how far above it they

they could not tell, nor did they wait until next Tide to get the Pole.

The Whales came in to *Deer Sound* every Tide from the Westward, with the Flood, and returned with the Ebb to the Westward. There were several Openings seen on the South West Side of the *Strait*, which were never look'd into, so that the West Side seem'd to be only broken Lands and Islands, but no Openings were seen on the North East Side, except *Deer Sound*, which only went up two Leagues, the *Indians* they had on Board having travelled round it on Foot; there was also below it a fine large Cove, or Harbour, capable of containing a Fleet of Ships.

Captain *Smith*, in sailing from *Churchill* to *Whale Cove* in four Voyages, in 1740, 1742, 1743, and 1744, set out about the First of July in each Year; he found some Ice betwixt *Churchill* and *Cape Eskimaux*, but from thence to *Whale Cove*, he neither in going out, or returning, saw any Ice to obstruct his Sailing, it being always drove to the Eastward from that Coast into the great Bay, by a strong Current setting from the North West Shore, which, with an equal Westerly Wind, drives it more to South Eastward in twenty-four Hours, than an Easterly Wind can force back again in forty eight Hours; by which Means, the Bay to Southward is full of Ice, when there is none on the North West Side of the Bay.

This Current from the West also, sets the Ice to Eastward thro' *Hudson's Strait*, which

B

causes

causes so much Ice being at the East Entrance of the *Strait*, in the beginning of *July*, when at the same Time the West End is tolerably clear of Ice ; and this Current, with the Ice from *Davy's Strait*, is the Cause of so many Islands of Ice being seen so far as the Banks of *Newfoundland* in 44° .

Scrogs sail'd the 22d of *June*, 1722, from *Churchill*, to know what was become of the *Albany*, and the other Vessel that sail'd with *Vaughan* and *Barlow*, upon the Discovery, in 1720. He saw shatter'd Ice to Eastward of him, with Sea-Horses lying upon it, until he came near *Merry-Sound* in about 62° , where he arriv'd the Twenty-sixth ; there he anchored, and traded with the Natives, until the First of *July* ; the Ice driving in by the Easterly Winds to the Islands near it ; he sail'd thence the First of *July*, and saw some shatter'd Ice, Eastward of *Pistol Bay*, on the Second ; from thence to *Whalebone Point* in $64^{\circ} 55'$ where he anchored, he saw no Ice, but a little shatter'd Ice in $63^{\circ} 35'$, tho' he beat several Days backward and forward in the *Welcome*, nor any Ice from thence upon his Return to *Churchill*, where he arriv'd the latter End of *July*.

Crow and *Napier*, who sail'd from *Churchill* the beginning of *July* 1737, upon a pretended Discovery, by Orders from the Company ; they having been for some Years importuned by Mr. *Dobbs*, to send a Sloop to *Whalebone Point*, in 65° where *Scrogs* had found so great a Tide, and saw an Opening to Westward ; in order to observe that Tide, and to try the Opening, with full

fu
C
in
Su
26
tra
the
24
to
Jo
del
or
pla
wa
the
Cor
Ind
ten
did
thei
thei
Har
Lan
Lea
men
Pass

N
Cro
Tra
have
and
no l
ed to
Exp
Wes

full Instructions given to the Company for his Conduct upon the Voyage ; instead of attempting any Discovery, they went out late in the Summer, sail'd no farther than *Whale Cove* in $62^{\circ} 26'$, seventy Leagues from *Churchil*, where they traded with the *Indians*, they were limited by the Company, not to stay longer out than the 24th of *July*, and were instructed by them not to go farther than $63^{\circ} 20'$, as appears by their Journal ; consequently, were not capable, or designed to make any Discovery. They were ten or twelve Days in sailing to *Whale Cove*, complaining of much Ice in the Offing, or to Eastward, and near *Sir Byby's Island* ; by the 15th they got to *Pistol Bay*, and sailed into *Whale-Cove* that Night, where they traded with the *Indians* for Finn and Oyl, until the 27th, pretending they could not get out for Ice, tho' it did not prevent the *Indians* coming to them in their Canoes, and in the mean Time they sent their own *Boat* into *Pistol Bay* to look for a Harbour, but found no Harbour, nor saw any Land except two small Islands four or five Leagues Westward of *Pistol Bay*, and don't mention any Ice being seen by them in their Passage there.

Napier kill'd himself by drinking Brandy, and *Crow*, in his Journal says, that having no more Trade, the *Indians* being gone, he propos'd to have gone to $63^{\circ} 20'$, but it being then the 27th, and they being limited by the Company to stay no longer out than the 24th of *July*, he returned to *Churchil* ; and thus ended the Company's Expedition, for a Discovery of a Passage to the Western Ocean, Yet *Sir Byby Lake*, in his

Letter by Order of the Company to Mr. *Dobbs*, magnifies this as a great and dangerous Attempt, and Voyage, saying, the Sloop had gone out early in the Summer, and stay'd out until the latter End of *August*, and in all that Time could make no Discovery, nor saw any Sign of a Passage ; that they had lost a Governor (*Nappier*) in the Voyage, and the boldest of their North Westers were afraid of sailing to the Northward ; but they carefully avoided sending a Copy of the Journal, which they were at last obliged to produce, by Order of the Committee of the House of Commons.

May not then the Account they give in their Journal, of so much Ice seen in their Passage to *Whale Cove*, which was no more than shatter'd sailing Ice, not capable of obstructing their Passage, so contrary to Captain *Smith's* four Journals, to *Scrog's* Journal, and *Fox's*, and *Button's*, upon their first Discovery of that Coast ; and contrary to *Middleton's* Journal, who saw no Ice but a very little to Eastward when he left *Churchil*, upon his going out, until he got to $64^{\circ} 20'$ in the *Welcome* ; may not this Account from *Crow* and *Napier*, be much magnified by them, to please the Company, by intimidating others from attempting to find the Passage. From this Abstract of their Journal, it is evident, that under a meer Shew of sending them upon the Discovery, they ordered them to sail only to *Whale Cove*, and trade with the *Indians*, and to return in three Weeks ; so that every intimidating Account, they knew, would please the Company.

From

From all these forementioned Journals, it seems evident, that from the Inlet near Cape *Esquimaux* in $61^{\circ} 20'$, to *Wager Strait* in $65^{\circ} 24'$, it is all broken Lands and Islands, and this is confirmed by several other concurring Circumstances. The Rising of the Tide ten Feet in the Inlet South of Cape *Esquimaux*, when no Current set into or out of that Inlet, together with its Saltness, Depth, and Clearness of the Water, is a Proof that the Tide there, flow'd thro' the Inlets seen to the Northward of the Inlet; the great Opening and Islands seen in *Hope Bay*, South West of *Whale Cove*, the large Opening North-West of it, and Northward in *Pistol Bay*; there being no Land seen from *Whale Cove* to *Marble Island*, except one Head-Land, called *Cape Fair-way*; the great Bay between the Head-Land North of *Marble Island* in $63^{\circ} 20'$, and *Cape Fullerton* in $64^{\circ} 10'$, which Cape is made up of Islands; the great Opening between that Cape and *Whalebone Point* in $64^{\circ} 55'$, as well as *Wager Strait* are confirmed by the several Journals; so that whole Tract is nothing but Islands and Inlets. The Tide and Current, and Course of the Flood, is a great confirmative Proof, not only of its being a broken Coast, but also that it communicates with another Ocean: For all Tides, in Inlets, Bays, or Straits, are caused by the Influx of Waters from some Ocean; and the further such Coasts or Bays are distant from the Ocean, so much later the Tide is still in flowing; the Method Mariners in their Journals take, of shewing the earliness or lateness of the Tide, is from the Moon's Southing, by the

Points

Points of the Compass; and also by the Hour it is high Water at the full and new Moon; therefore as the Moon goes in its Diurnal Rotation from the North to the South, by the East, and from the South to the North by the West; so the Moon's Place from the Meridian, being pointed out by the Compass, a Tide flowing later, as it goes farther from the Ocean, is described thus, Flood or high Water by a South Moon, S S W. S W. W S W. W. W N W. &c. for the Moon in going from South to West is still later in coming to those several Points in its Diurnal Rotation, and in going towards an Ocean, where you meet the Tide sooner as you approach the Ocean; there you meet the Tide in the Reverse; as from West, to W S W. S W. S S W. South, and so on towards the East; so that sailing in a Strait, Bay, or Inlet, it is easily known whether they are sailing towards or from an Ocean by their finding high Water earlier or later, by the Moon's Place, when it is high Water. This is also described by the Hour of high Water at new and full Moon, for a South Moon makes high Water at twelve o'Clock, S S W. at 1^h 30' S W. at 3^h. W S W. at 4^h 30' and a West Moon at 6^h.

Thus in going thro' *Hudson's Strait* to the Bay; at the East Entrance, from our Ocean, an E S E. Moon makes high Water at 7^h 30'; farther in the Strait, a S E. Moon at 9^h farther a S S E. Moon at 10^h 30', and at Cape *Diggs*, where they enter the Bay, a South Moon at 12^h o'Clock. If therefore this Eastern Tide continued to flow and raise the Tide at the West,

and

and North West Side of the Bay ; as that Coast is nearly at an equal Distance from Cape *Diggs* where the Tide enters the Bay, it therefore should be high Water much at the same Time at Port *Nelson*, in 57° , *Churchil* River in 59° : Cape *Eskimaux* in $61. 26'$, and *Whale-Cove* in $62. 26'$, and so on to *Marble-Island*, and *Wager-Strait* ; and the Tide should set into, and from the Coast, by an East and West Current. But if at the same Time that an Eastern Tide from our Ocean, flows into the Eastern Part of *Hudson's Bay*, and raises the Tide there ; a Tide from a Western Ocean, should thro' a Strait or broken Lands, flow into the West Side of the Bay, and raise a Tide there ; for the same Parity of Reasoning, the Tide of Flood should not be at the same Time in different Parts of the Bay, but should be earlier or later, according as the Places are nearer, or farther, from the Opening thro' which the Tide flows from the Ocean.

It is therefore evident from the several Journals taken from *Fox*, *Scrogs*, *Smith* and *Middleton*, that at *Whale-Cove* in $62^{\circ} 26'$, a W. S. W. Moon makes high Water, at $4^h 30'$ at Cape *Eskimaux* in $61^{\circ} 26'$, a West Moon at 6^h . at *Churchil* in 59° , a W. N. W. Moon at $7^h 30'$. and at Port *Nelson* in 57° , a N. W. Moon at 9^h . So that it is six Points of the Compass, or $4^h 30'$ later, flowing at Port *Nelson*, than at *Whale-Cove* ; yet both are near the same Distance from Cape *Digg's*, where the Tide enters the Bay.

By Captain *Middleton's* Journal, a West Moon makes high Water at *Marble-Island*, at the

the Entrance of *Wager Strait* ; as also in *Savage Sound*, and *Deer Sound*, many Leagues within the Strait ; so that the Tide flows later at *Marble-Island*, and *Wager Strait*, by an Hour and half, than at *Whale-Cove*, tho' they are both nearer to *Hudson's Strait*, than *Whale-Cove* ; and therefore ought to be earlier if caus'd by our Eastern Tide.

The Tides flowing at the same Time at *Marble Island* and *Wager Strait*, is a Confirmation of the Tide's flowing thro' those broken Lands, and Islands, to the Westward ; they being much at the same Distance from the Western Ocean ; but as the Tide is later than at *Whale Cove*, consequently *Whale Cove* is nearer to that Ocean, and seems to be the largest and best Opening by *Pistol Bay*.

The Number of large black Whales which are constantly seen, and taken in Summer, among all the broken Grounds on the North-West of the Bay, is an additional Proof, of a Communication with the Western Ocean there ; for since all our Whales go in the Beginning of Winter from *Spitzberg*, and *Davy's Strait*, to warm Latitudes in our *Atlantick Ocean*, even as far as *Bermudas* ; and return in the Beginning of Summer to *Spitzberg*, and *Davy's Straits* ; so, for the same Reason, the Whales seen in the North-West of *Hudson's Bay*, must have a Way of coming from, and returning to an Ocean, and going to warm Latitudes in the Winter ; now it is allowed by all, that there are great Numbers in the North-West of the Bay, many every Year caught there by the *Eskimaux Indians*,

Ans, and these bring their Finn and Oil to *Whale-Cove*, to sell to the Company's Sloop sent there, from the Westward, Southwestward, and North-Westward; and consequently these Whales are caught much farther to the Westward; and since none have been seen in any other Part of the Bay, nor in *Hudson's Strait*, except within twenty Leagues of its Entrance, they cannot possibly be supposed to come from our Ocean, to the North-West Side of the Bay.

Captain *Middleton*, to avoid the Force of this Reasoning about the Whales, and the Height and Time of the Tides there, has endeavour'd to impose a Strait upon the Publick in $66^{\circ} 40'$ in *Repulse Bay*, which runs into *Hudson's Strait*, near *Cape Comfort*; this he makes to be five or six Leagues wide, eighteen to twenty Leagues long, yet fast frozen over from Side to Side, and would not be broke up the Season he was there; yet through this frozen Strait, he would bring all the Whales seen in *Wager Strait*, *Whalebone Point*, near *Marble Island*, *Whale-Cove*, &c. and also Water sufficient to raise the whole Tides in all the North-West Side of the Bay; although he allows the Strait to be frozen over, and full of large and small Islands, besides, though he says the Tide there was three Hours earlier than it really was, from the Evidence of others aboard him; yet by his own Account, it is later here than at *Whale-Cove*, and consequently could not raise a Tide there, for then the Effect must be earlier than the Cause; he then finding it impracticable to bring them this Way, would insinuate that they came from *Davy's Strait*, and *Baffin's Bay*, and

so round to some Inlet, he supposes may be to North-West of *Wager Strait*. But how Whales from our Ocean, which have little enough Time to get up into *Baffin's Bay*, to the Latitude of 78° , by the Middle of *July*, and afterwards to return to the Southward in Autumn, could take so long a Route as to go round again to the North-West of *Wager Strait*, and down to *Whale-Cove* in 62° . from 78° . through a Sea full of Ice, as is the West Side of *Baffin's Bay*, and yet be there so early as *June*, (for in the Beginning of *July* they trade with the *Indians* for Whale-Fin taken fresh the same Summer,) is not to be conceived; and if only such a Passage should communicate with the North-West of the Bay, and no Passage from a Southerly Ocean, would not such a Passage from such Northerly cold Latitudes, as to 78° . cause a vast Quantity of Ice to be thrown that Way into the Bay; but since no Ice is seen there at that Season, it is a corroborating Proof that the Communication there is between the Bay and a Southerly Ocean, and not with a Northerly Ocean; and the Current from this, setting, the Ice constantly South-Easterly, from that Coast, adds to all the other Proofs, and confirms the Whole. The *Esquimaux* *Indians* not daring to go to the Continent, yet frequenting all this Coast to Westward, shews that the Whole is Islands; and all the Northern *Indians* coming to *Churchil*, who have been any way to the Westward, give an Account of a Sea West of *Churchil* in the same Latitude, where they have seen Vessels, and traded with them there, having brought Copper to *Churchil*, and other Things they had barter'd

barter'd with them there. Besides, if Admiral *de Fantes's* Letter be genuine, of his Meeting in his Boat a *Boston* Vessel trading beyond the West of *Hudson's Bay*, after leaving his Ship in *Lake Belle*, upon sailing from *Lima* round *California*, to 54° North Latitude, wherein he names the Master's Name and Pilot's, *Shapley* and *Seymour Gibbons*, and we find a Family of the Name of *Shapley* then lived at *Boston*; there would be no further Need of Proof to demonstrate there being a navigable Passage from *Hudson's-Bay* to the Western Ocean of *America*.

