

FOR SALE

HUNTLEY STREET, NEAR SOUTH DRIVE... 14 rooms, 3 bathrooms...

PROBS: Fresh north to north-west... fair and cool.

The Toronto World

TUESDAY MORNING APRIL 29 1919

VOL. XXXIX.—No. 14,048 TWO CENTS

WANTED FOR TENANT

20,000 SQUARE FEET WAREHOUSE SPACE... Centrally located. Must have good light.

LEAGUE OF NATIONS NOW AN ACCOMPLISHED FACT

Toronto Police Find German Uniform and Arms at Alleged Bolshevik Home

DEBATE RAILWAY BILL UNDER CLOSURE RULE

Early This Morning Federal House, by Fifty-One Majority, Passed Bill to Place All Government Roads Under Canadian National Railways--Public Ownership Is Vigorously Defended.

Special to The Toronto World. Ottawa, April 28.—At an early hour this morning the house was still debating under the closure rule the bill to place all the government railways of Canada under the Canadian National Railways.

Public ownership, he said, was in the air all over the world and railway nationalization would soon be accomplished in Great Britain and the United States.

NEW FEDERATION OF ANGLICAN MEN TO BE RETAINED

United Men's Society of Church of England Formed.

"Give the man in the back seat a place up front" was the result of the meeting of the Church of England representatives held last night at St. John's Church.

ALSATIANS OVER HALF STRASBOURG POPULATION

Strasbourg, April 28.—The census taken here under the direction of the French authorities has been completed and shows that fifty nine per cent. of the population is French.

THE SITUATION IN EUROPE

The Associated Press issues the following on the international situation. The revised covenant of the league of nations has finally been adopted at a plenary session of the peace conference.

Japan's ambitions for a clause in the covenant dealing with racial equality were not satisfied, and the desires of France for an international police force and limitation and verification of armaments were not fulfilled.

BRITISH FORCE HAS LEFT FIUME TO AVOID FRICTION

Departure Was Coincident With Exit of Italian Delegates From Paris.

STRENGTHENING UNITS ITALIANS ARE SAID TO BE SENDING REINFORCEMENTS TO CENTRAL ISTRIA

Rome, April 28.—Great enthusiasm was aroused at a meeting here today, when it was announced that the national council of Fiume had handed over all the powers of the state and the municipality to a representative of the Italian government, to be exercised in the name of King Victor Emmanuel.

Some of the British troops which occupied Fiume with the Italians after the armistice left Fiume when the Italian delegates to the peace conference left Paris, according to advices from Agram, capital of Croatia and Slavonia.

WANT ANNEXATION TO ITALY

Fiume, April 28.—A vast crowd, including the members of many organizations, escorted the national council, on Saturday to express the city's determination to be annexed to Italy.

IRISH CENSORSHIP TO BE RETAINED

Government Cannot Permit Irish Press to Be Used as Instrument of Agitation.

London, April 28.—It is announced that the Irish press censor, Baron Decies, has resigned and that Major Bryan R. Cooper, hon. secretary of the Irish Unionist Alliance, has been appointed to succeed him.

FINNS TAKE JUNCTION OF IMPORTANT ROADS

Helsingfors, Finland, April 28.—The newspapers report that Finnish volunteers on Saturday captured the town of Lotnampolito, on the White Sea.

FINNS TAKE JUNCTION OF IMPORTANT ROADS

Helsingfors, Finland, April 28.—The newspapers report that Finnish volunteers on Saturday captured the town of Lotnampolito, on the White Sea.

Germany has been notified by the president of the British commission that country of the withdrawal by the allies of all blacklists against her, and also the abolition of all trading disabilities.

MORE GERMANS ARRIVE TO ATTEND CONFERENCE

Versailles, April 28.—A large number of Germans who are to attend the peace congress arrived here this evening at 9 o'clock.

CROSS WIND BLOCKS RAYNHAM'S FLIGHT

St. John's, Nfld., April 28.—A cross wind, sweeping at 25 miles an hour from the southeast, was the only thing which prevented a "hop off" in the trans-Atlantic flight of Capt. Frederick P. Raynham in his Martiniede seaplane from Mount Pearl Plateau today.

TO TRY EX-KAISER BY A COMMISSION OF FIVE JUDGES

Will Appear Before League Court for Supreme Offence Against World Morality.

TO ASK EXTRADITION

Bench Composed of Representatives of the Five Great Powers.

CONFERENCE ADOPTS THE REVISED COVENANT OF LEAGUE OF NATIONS

Japanese, French and Belgian Amendments Withdrawn After Delegates Had Expressed Regret That They Were Not Accepted--Composition of Executive Council Announced--Borden Presents Revised Points in Labor Report.

Paris, April 28.—The revised covenant of the league of nations was adopted by the plenary session of the peace conference this afternoon without division and without amendment.

DECLARE JAPANESE POSITION

Continuing, Baron Makino reminded the conference that the amendment presented to the league committee April 11 asserting equality of nations was rejected, although there was a strong majority in its favor.

THE "RED" ARMY BACK

Geneva, April 28.—The Rumanian attacks on the Hungarian red army continue successfully according to despatches from Budapest, especially in the Northern sector.

POLICE ARREST LEADERS OF TORONTO BOLSHEVIKI

Disguised Germans, Held Secretly Pending Deportation, Posed as Socialists--Charnie, a Russian, Arthur Ewart and Wife, Both Huns, Were Broadcast Spreaders of Sedition.

That there is a large Bolshevik organization in existence in Toronto, and that two of the leaders of the movement have been proven to be of German birth, and to have corresponded with Germany from Toronto during the war, are the principal facts disclosed by the police in the arrest of the disguised leaders.

THIEVES IN BERLIN ARE LOOTING OPENLY

Berlin, April 28.—A casual walk thru the streets in the neighborhood of Berlin police headquarters tends to show that there is no exaggeration to the reports tending to show that open plundering in Berlin.

STEAMSHIP ARRIVALS

Table with columns: Steamer, From, Arrival. Includes routes to New York, Boston, and other ports.

TO TRY EX-KAISER BY A COMMISSION OF FIVE JUDGES

Will Appear Before League Court for Supreme Offence Against World Morality.

TO ASK EXTRADITION

Bench Composed of Representatives of the Five Great Powers.

CONFERENCE ADOPTS THE REVISED COVENANT OF LEAGUE OF NATIONS

Japanese, French and Belgian Amendments Withdrawn After Delegates Had Expressed Regret That They Were Not Accepted--Composition of Executive Council Announced--Borden Presents Revised Points in Labor Report.

DECLARE JAPANESE POSITION

Continuing, Baron Makino reminded the conference that the amendment presented to the league committee April 11 asserting equality of nations was rejected, although there was a strong majority in its favor.

THE "RED" ARMY BACK

Geneva, April 28.—The Rumanian attacks on the Hungarian red army continue successfully according to despatches from Budapest, especially in the Northern sector.

POLICE ARREST LEADERS OF TORONTO BOLSHEVIKI

Disguised Germans, Held Secretly Pending Deportation, Posed as Socialists--Charnie, a Russian, Arthur Ewart and Wife, Both Huns, Were Broadcast Spreaders of Sedition.

That there is a large Bolshevik organization in existence in Toronto, and that two of the leaders of the movement have been proven to be of German birth, and to have corresponded with Germany from Toronto during the war, are the principal facts disclosed by the police in the arrest of the disguised leaders.

THIEVES IN BERLIN ARE LOOTING OPENLY

Berlin, April 28.—A casual walk thru the streets in the neighborhood of Berlin police headquarters tends to show that there is no exaggeration to the reports tending to show that open plundering in Berlin.

STEAMSHIP ARRIVALS

Table with columns: Steamer, From, Arrival. Includes routes to New York, Boston, and other ports.

FINNS TAKE JUNCTION OF IMPORTANT ROADS

Helsingfors, Finland, April 28.—The newspapers report that Finnish volunteers on Saturday captured the town of Lotnampolito, on the White Sea.

STEAMSHIP ARRIVALS

Table with columns: Steamer, From, Arrival. Includes routes to New York, Boston, and other ports.

TO TRY EX-KAISER BY A COMMISSION OF FIVE JUDGES

Will Appear Before League Court for Supreme Offence Against World Morality.

TO ASK EXTRADITION

Bench Composed of Representatives of the Five Great Powers.

CONFERENCE ADOPTS THE REVISED COVENANT OF LEAGUE OF NATIONS

Japanese, French and Belgian Amendments Withdrawn After Delegates Had Expressed Regret That They Were Not Accepted--Composition of Executive Council Announced--Borden Presents Revised Points in Labor Report.

DECLARE JAPANESE POSITION

Continuing, Baron Makino reminded the conference that the amendment presented to the league committee April 11 asserting equality of nations was rejected, although there was a strong majority in its favor.

THE "RED" ARMY BACK

Geneva, April 28.—The Rumanian attacks on the Hungarian red army continue successfully according to despatches from Budapest, especially in the Northern sector.

POLICE ARREST LEADERS OF TORONTO BOLSHEVIKI

Disguised Germans, Held Secretly Pending Deportation, Posed as Socialists--Charnie, a Russian, Arthur Ewart and Wife, Both Huns, Were Broadcast Spreaders of Sedition.

That there is a large Bolshevik organization in existence in Toronto, and that two of the leaders of the movement have been proven to be of German birth, and to have corresponded with Germany from Toronto during the war, are the principal facts disclosed by the police in the arrest of the disguised leaders.

THIEVES IN BERLIN ARE LOOTING OPENLY

Berlin, April 28.—A casual walk thru the streets in the neighborhood of Berlin police headquarters tends to show that there is no exaggeration to the reports tending to show that open plundering in Berlin.

STEAMSHIP ARRIVALS

Table with columns: Steamer, From, Arrival. Includes routes to New York, Boston, and other ports.

FINNS TAKE JUNCTION OF IMPORTANT ROADS

Helsingfors, Finland, April 28.—The newspapers report that Finnish volunteers on Saturday captured the town of Lotnampolito, on the White Sea.

STEAMSHIP ARRIVALS

Table with columns: Steamer, From, Arrival. Includes routes to New York, Boston, and other ports.

TO TRY EX-KAISER BY A COMMISSION OF FIVE JUDGES

Will Appear Before League Court for Supreme Offence Against World Morality.

TO ASK EXTRADITION

Bench Composed of Representatives of the Five Great Powers.

CONFERENCE ADOPTS THE REVISED COVENANT OF LEAGUE OF NATIONS

Japanese, French and Belgian Amendments Withdrawn After Delegates Had Expressed Regret That They Were Not Accepted--Composition of Executive Council Announced--Borden Presents Revised Points in Labor Report.

DECLARE JAPANESE POSITION

Continuing, Baron Makino reminded the conference that the amendment presented to the league committee April 11 asserting equality of nations was rejected, although there was a strong majority in its favor.

THE "RED" ARMY BACK

Geneva, April 28.—The Rumanian attacks on the Hungarian red army continue successfully according to despatches from Budapest, especially in the Northern sector.

POLICE ARREST LEADERS OF TORONTO BOLSHEVIKI

Disguised Germans, Held Secretly Pending Deportation, Posed as Socialists--Charnie, a Russian, Arthur Ewart and Wife, Both Huns, Were Broadcast Spreaders of Sedition.

That there is a large Bolshevik organization in existence in Toronto, and that two of the leaders of the movement have been proven to be of German birth, and to have corresponded with Germany from Toronto during the war, are the principal facts disclosed by the police in the arrest of the disguised leaders.

THIEVES IN BERLIN ARE LOOTING OPENLY

Berlin, April 28.—A casual walk thru the streets in the neighborhood of Berlin police headquarters tends to show that there is no exaggeration to the reports tending to show that open plundering in Berlin.

STEAMSHIP ARRIVALS

Table with columns: Steamer, From, Arrival. Includes routes to New York, Boston, and other ports.

FINNS TAKE JUNCTION OF IMPORTANT ROADS

Helsingfors, Finland, April 28.—The newspapers report that Finnish volunteers on Saturday captured the town of Lotnampolito, on the White Sea.

STEAMSHIP ARRIVALS

Table with columns: Steamer, From, Arrival. Includes routes to New York, Boston, and other ports.

TO TRY EX-KAISER BY A COMMISSION OF FIVE JUDGES

Will Appear Before League Court for Supreme Offence Against World Morality.

TO ASK EXTRADITION

Bench Composed of Representatives of the Five Great Powers.

CONFERENCE ADOPTS THE REVISED COVENANT OF LEAGUE OF NATIONS

Japanese, French and Belgian Amendments Withdrawn After Delegates Had Expressed Regret That They Were Not Accepted--Composition of Executive Council Announced--Borden Presents Revised Points in Labor Report.

DECLARE JAPANESE POSITION

Continuing, Baron Makino reminded the conference that the amendment presented to the league committee April 11 asserting equality of nations was rejected, although there was a strong majority in its favor.

THE "RED" ARMY BACK

Geneva, April 28.—The Rumanian attacks on the Hungarian red army continue successfully according to despatches from Budapest, especially in the Northern sector.

POLICE ARREST LEADERS OF TORONTO BOLSHEVIKI

Disguised Germans, Held Secretly Pending Deportation, Posed as Socialists--Charnie, a Russian, Arthur Ewart and Wife, Both Huns, Were Broadcast Spreaders of Sedition.

That there is a large Bolshevik organization in existence in Toronto, and that two of the leaders of the movement have been proven to be of German birth, and to have corresponded with Germany from Toronto during the war, are the principal facts disclosed by the police in the arrest of the disguised leaders.

THIEVES IN BERLIN ARE LOOTING OPENLY

Berlin, April 28.—A casual walk thru the streets in the neighborhood of Berlin police headquarters tends to show that there is no exaggeration to the reports tending to show that open plundering in Berlin.

STEAMSHIP ARRIVALS

Table with columns: Steamer, From, Arrival. Includes routes to New York, Boston, and other ports.

FINNS TAKE JUNCTION OF IMPORTANT ROADS

Helsingfors, Finland, April 28.—The newspapers report that Finnish volunteers on Saturday captured the town of Lotnampolito, on the White Sea.

STEAMSHIP ARRIVALS

Table with columns: Steamer, From, Arrival. Includes routes to New York, Boston, and other ports.

TO TRY EX-KAISER BY A COMMISSION OF FIVE JUDGES

Will Appear Before League Court for Supreme Offence Against World Morality.

TO ASK EXTRADITION

Bench Composed of Representatives of the Five Great Powers.

CONFERENCE ADOPTS THE REVISED COVENANT OF LEAGUE OF NATIONS

Japanese, French and Belgian Amendments Withdrawn After Delegates Had Expressed Regret That They Were Not Accepted--Composition of Executive Council Announced--Borden Presents Revised Points in Labor Report.

DECLARE JAPANESE POSITION

Continuing, Baron Makino reminded the conference that the amendment presented to the league committee April 11 asserting equality of nations was rejected, although there was a strong majority in its favor.

THE "RED" ARMY BACK

Geneva, April 28.—The Rumanian attacks on the Hungarian red army continue successfully according to despatches from Budapest, especially in the Northern sector.

POLICE ARREST LEADERS OF TORONTO BOLSHEVIKI

Disguised Germans, Held Secretly Pending Deportation, Posed as Socialists--Charnie, a Russian, Arthur Ewart and Wife, Both Huns, Were Broadcast Spreaders of Sedition.

That there is a large Bolshevik organization in existence in Toronto, and that two of the leaders of the movement have been proven to be of German birth, and to have corresponded with Germany from Toronto during the war, are the principal facts disclosed by the police in the arrest of the disguised leaders.

THIEVES IN BERLIN ARE LOOTING OPENLY

Berlin, April 28.—A casual walk thru the streets in the neighborhood of Berlin police headquarters tends to show that there is no exaggeration to the reports tending to show that open plundering in Berlin.

STEAMSHIP ARRIVALS

Table with columns: Steamer, From, Arrival. Includes routes to New York, Boston, and other ports.

FINNS TAKE JUNCTION OF IMPORTANT ROADS

Helsingfors, Finland, April 28.—The newspapers report that Finnish volunteers on Saturday captured the town of Lotnampolito, on the White Sea.

STEAMSHIP ARRIVALS

Table with columns: Steamer, From, Arrival. Includes routes to New York, Boston, and other ports.



Don't Be Indifferent When Buying Clothes

So many people are being led astray in the matter of clothes values just now that we think a word of caution will not be amiss.

In order to get suits down to a price that looks like peace time values, many houses are putting up inferior materials and boosting them as if they were all that they claim for them. Now this is misleading, because no one can work the "miracle" act these days with dependable fabrics, because they are not to be had in quantities nor at prices that warrant bargain sales of them. We figure that we are big sellers and manufacturers of clothing for men and boys and that our buyers are as wide awake and keen as any in Canada or the U. S., but they won't buy trash and try to palm it off for good merchandise simply to get clothes down to a price and you wouldn't want that kind of policy,

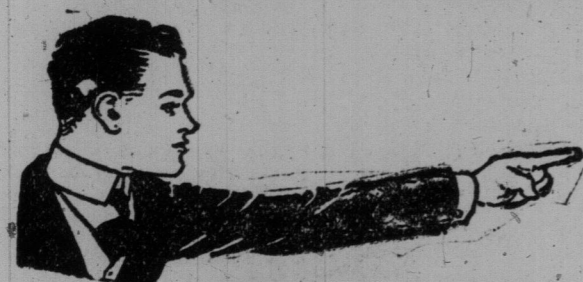


would you?---We have a table of \$18 values in men's suits we challenge any one to beat, we have better ones at \$22, \$25, \$28, \$30, \$35, \$40, \$45, \$48, \$50 and \$60, and we say to you honestly and earnestly that before these values are lowered you may see even higher prices for the same cloths and like a good Indian we are not double tongued. Now don't be indifferent about clothes buying, don't buy any old rag because it fits your price idea for the moment, think a little bigger and buy a little better and take it from us you'll come out best in the long run.

Our price is one to all, the same. Nothing put on to take off and nothing to put on. A square deal and standing behind every sale till you are satisfied. That's the solid rock bottom foundation that has built our splendid business and keeps it sound and healthy.

We always carry a big stock of good clothes and as the days go by we are going to do better and greater things for you.

Our Furnishing Department



Has been re-organized and is now in dandy shape to meet all your needs in Haberdashery. We

specialize in

Hosiery Gloves Shirts
Underwear and Neckwear

Our Store is Open Till 6 Every Day and Saturday Night Till 10 o'Clock

OAK HALL, Clothiers

Yonge and Adelaide Streets

Service---is Our Pet Hobby



J. C. Coombes
MANAGER

SPENCE APPEALS ON NEW GROUNDS

Says No Jurisdiction Under War Measures Act to Prosecute Him.

Judgment was reserved by the second appellate division court when the celebrated Spence "Parasite" appeal came up for consideration at Osgoode Hall yesterday. The court indicated, however, that an effort would be made to reach a verdict in the case, as it is destined to go on before Magistrate Kingsford in the police court this morning. The hearing yesterday was an appeal from a judgment handed down by Justice Blaisdel on April 15, when he refused to issue an order prohibiting Magistrate Kingsford from hearing the case. R. McKay, K.C., appeared for the appellant, and E. Bayly, K.C., acted for the crown.

Mr. McKay pointed out that on the previous application the ground taken was merely that the "parasite" was granted by the crown, precluded any further prosecution. Now the ground taken was that there was no jurisdiction under the war measures act for the governor-in-council to make the order under which Mr. Spence was being prosecuted.

Chief Justice Meredith thought that the point should have been raised before, as the prosecution was wholly under the order-in-council; if that was bad, the whole prosecution was bad. His lordship further suggested going on with the trial and appealing in the usual manner. Mr. McKay replied that he wanted no trial except by jury.

WAR GRATUITY READY FOR FLYING CORPS

All soldiers or airmen who have served and were discharged from the Royal Flying Corps or the Royal Air Force, Canada, before November 11, 1918, and who had more than six months' pay service, are instructed according to an announcement made at headquarters yesterday morning, to make claim on the paymaster here in order that any war gratuity due them, may be paid.

Airmen discharged for misconduct or irregular enlistment or with less than six months' pay service are not required to make claims.

A form will be sent by the paymaster to airmen making application and upon its return completed a cheque for any amount found to be due will be forwarded.

ST. FRANCIS MINSTRELS BRING DOWN HOUSE

In their initial performance in the parish hall last night, St. Francis' L. and A. A. minstrel show gave a splendid performance, solos, chorus, tambourines, bones and "end men" combining in the presentation of a fine bill. In addition to the musical numbers a comedy sketch entitled "A First-Class Hotel" showing some laughable situations that took place in Doolittle's Hotel, was put before the footlights. The performance showing the skill for which the L. and A. A.'s are noted.

L. Van Norman was interlocutor, E. V. Sullivan, accompanist; musical directors, Messrs. E. Sullivan and G. Kelly; bones, Messrs. Murphy, Crawford, Fullerton; tambos, Messrs. O'Connor, Corbett, Costello; ballad singers, Messrs. McCue, McCue, Carey, Costello and Bill Murphy; managers, Messrs. McAuliffe, P. J. Glynn, E. Flynn J. Weaver.

WILLS AND BEQUESTS.

Miss Sarah Julia King, who died in Toronto, Feb. 1919, left an estate valued at \$11,210, which will be divided among the family and other immediate relatives.

His mother, two sisters, and two brothers, will inherit the estate of Lieut.-Col. R. S. Worsley, D.S.O., of the Army Service Corps, England, who died at sea, May 4, 1917, leaving an estate valued at \$7581. Ancillary probate was applied for yesterday by the mother of the testator.

Pte. Frank Laflin of the Army Medical Corps, who was killed in action on August 26, 1918, left his entire estate valued at \$4989 to his widow, who resides in England.

Mary Frances Knight, daughter, will inherit the entire estate of her mother, Mary C. Richardson, a widow, who died in Toronto on April 14, 1919, leaving an estate valued at \$4092.

Thomas A. B. Bault, an employee of the T. Eaton Co., who died April 5, 1919, left his entire estate to his widow, Mrs. Florence Eleanor Bault.

ST. ALBAN'S CATHEDRAL.

The Deanery of Toronto S. S. Association had its usual April service in St. Alban's Cathedral last night. The rector of St. Matthew's, the Rev. Dr. Seager, presided. The certificates of the lenten offerings of the children for missions were presented, and amounted to \$1908.55, from twenty-six schools.

The bishop of the diocese imparted the information that the Church of England schools in the Dominion have taken \$65,000 in war bonds, as an endowment for missions to the Eskimos and Indians.

St. Catharines Labor Radicals Not Favoring National Anthem

St. Catharines, April 28.—The open forum which has been held in Griffin's family theatre for the past five Sundays under the auspices of the Labor Educational League and addressed mainly by speakers of radical socialist tendency, has never had the national anthem called for until last night when as a result of newspaper suggestion the chairman announced that "God Save the King" would be sung, and asked for special emphasis on the lines "confound their politics frustrate their knavish tricks." A pianist played the air, but they scambled to the open door without singing a word.

Percepto Optical Co.
W.M. Percy, Proprietor
Prescription Optician, 442 Yonge Street

DEBATE RAILWAY BILL UNDER CLOSURE

(Continued From Page 1.)

party one except that Donald Nicholson voted with the opposition. The schedules were adopted by 51 of a majority. Mr. Nicholson again voted against the government. The bill was then reported and the house adjourned at 11:15 a.m.

Before the house proceeded to consideration of the Canadian National Railway bill in committee, D. D. Maclean asked whether the members of the opposition would be allowed to speak 20 minutes, under closure, on each clause to be discussed, or whether by speaking once they would disallow themselves from participating further in the debate.

Closure Has 64 Majority.

Hon. Arthur Meighen said that each member would be allowed to speak 20 minutes on any clause as long as the debate did not extend until later than 2 o'clock on Tuesday morning. At that time if the bill was not out of committee, the question would be decided by the house. He then moved the closure motion, which was carried by a majority of 64 on a standing vote. Messrs. Fred Pardee and D. D. Nicholson voted with the opposition.

Frank S. Cahill of Ontario said "the statement of Sir Thomas White that the C. P. R. was behind the opposition to the bill, was made simply to try and cover up the action of this government, and its nefarious co-operation with the Mackenzie and Mann crowd. It was the cowardly act of a cowardly government."

The deputy speaker called upon Mr. Cahill to withdraw the remark, but the member for Pontiac replied that nothing milder would express his feelings in the matter.

Accepts a Challenge.

"I would like to go to the country now on this issue to find out what the people thought of public ownership under the control of Mackenzie and Mann, Hon. Dr. Reid and Z. A. Lash. Mr. J. H. Burnham of West Pontiac challenged a member of the Liberal party to come into his constituency and run an election on it. Mr. Burnham thereupon offered to resign his seat, and made the direct challenge to the opposition.

Mr. Cahill stood up and accepted the challenge amid opposition cheers. He said he would contest the seat with Mr. Burnham on this issue if the government would open it.

Hocken For Public.

H. C. Hocken was of the opinion that if the Liberal government, instead of building the National Transcontinental Railway, had bought some millions of Canadian Northern Canada would not be facing the present situation. As things now were, the country found itself with a good railway system and two failing systems.

Mr. Hocken remarked that he didn't hear members on the other side of the house say anything when they were in favor of public ownership.

Mr. A. B. Copp: "How about you?" Mr. Hocken: "Why I am the champion of public ownership in the city of Toronto. I have gone further along that line than any man, save the editor of 'The World'."

The speaker claimed that the issue before the house was private ownership vs. public ownership. He expressed the view that the province of Ontario was strongly in favor of the latter.

Hon. Rodolphe Lemieux said that when he was a member of the government he always preached in favor of the state control of railways. He said the Canadian Northern was to be faced today was a condition and not a theory and whether they built these 44 lines or not by adopting them they affected the province of Canada.

W. F. Maclean, South York, said he addressed the house as one who believed in public ownership, and especially in connection with railways. He had no apologies to make for public ownership, and did not like to hear members of the house refer to it as something "forced" upon the country. Public ownership was the only way to save the world. Great Britain had taken over the railways at the commencement of the war, and today the British prime minister and his colleagues were preparing for complete nationalization. United States had taken over the railways at the outbreak of the war, and they would never be turned back to the companies. Public ownership of railways had been a great source of strength to Germany during the war. Public ownership prevailed generally on the continent of Europe, in Australia and New Zealand. Africa was to be regenerated by public ownership of the Cape-to-Cairo Railway.

People Respond.

Mr. Maclean said that during his long struggle for public ownership he had sometimes been discouraged by a lack of response in the house, but there was always a response from the people. The trouble had been that too many public men tried to trim on the question. They had reminded him of the fable of the bat. According to this fable the beasts and the birds were one time at war, and the bat kept changing sides as the tide of battle wavered. When the birds seemed on the point of victory the bat pointed to his wings and claimed to be of their number. When the beasts seemed to be getting the best of it he pointed to his paws and his nose and claimed to be a mouse.

"We do not want any bats in the parliament of Canada. Let them take sides one way or the other on this



RAIN COATS

Exceptional Value at

DINEEN'S

Military Trench Coats—\$25.00 to \$35.00.
Tweed Raincoats—\$10.50 to \$25.00.
Fine Gabardine Coats—\$22.50 to \$35.00.
The latest models in Spring Overcoats—\$20.00 to \$35.00.

W. & D. DINEEN CO., Ltd.
140-142 Yonge St.

LABOR NEWS

LABOR SITUATION BECOMING ACUTE

Metal Trade, Machinists, Blacksmiths and Boilermakers May Strike.

The labor situation in Toronto this year is said to be acute. Several hundred painters and decorators are still on strike, and tomorrow night the machinists and metal trades council will conduct a mass meeting, closed to the press, the largest meeting of its kind ever held in Toronto, and grave fears are entertained in well informed circles that a strike of boilermakers, machinists, blacksmiths and allied trades may immediately ensue. In this connection it is interesting to note that the boilermakers are divided as to their labor interests. There are two factions, one which is moderate in outlook and which has already ratified agreements with employers, and the other which is more radical in its tendencies and which is associated with the metal trades council. The former comprise what is known as the International Union of Boilermakers, and have a large following in Toronto; the others also number a strong aggregation, but are said to number slightly less than the moderates. The sheet metal workers themselves have not as yet decided upon any action.

Rates of Pay.

Following are the minimum rates of pay for the different crafts: Patternmakers, 90c per hour; electrical workers, 80c; moulder and core-makers, 75c; sheet metal workers, 75c; metal polishers, 60c; plumbers, 80c; plumbers' helpers, 54c. Boilermakers—Layer out and flanger, 86c; boilermakers, 80c; machine hands, 68c; flangers, 80c; heater, 64c; helpers and rivet heaters, 60c. Boilermakers' apprentice rate: First year, 25c; second year, 30c; third year, 35c; fourth year, 41c. Blacksmiths—Heavy forgers, \$1.48 per hour; heater, 80c; smiths, 80c; general helpers 58c; forging machine operators, 80c; tip welders, 70c; heavy hammer drivers, 64c; other hammer drivers, 60c; general welders, 80c; acetylene welders, 70c; general laborers, 54c. Machinists, 80c per hour. Operators now at the trade shall receive 55, 60, 65 and 70 cents per hour for first, second, third and fourth years respectively. No operators shall be taken on after Dec. 31, 1918, and those already in the trade shall receive the minimum rate for machinists after four years' service as operators. Minimum rate for helpers, 55 cents per hour, the above rates apply to all employees male and female. In cases where a machinist cannot be supplied within 14 days the most experienced helper may be advanced, providing, however, that the minimum rate for machinists is paid.

STRIKE INEVITABLE IN METAL TRADES

Employers Say Granting Demands Would Ruin Business.

The certainty of a large strike among the metal trades is emphasized in the recent reply of J. G. Merrick, secretary of the Metal Trades and Founders' Branch of the Employers' Association to the communication from R. Brown and others representing the Metal Trades Council and others in a demand for higher wages and many other considerations. Mr. Merrick in his letter points out that the employers find it increasingly difficult to obtain new business on the basis of the present rates of wages and that any increase in these rates would nullify all possibility of proper competition. Employers, he says, have no control over other markets and must continually fight for place in the world of legitimate business. The secretary further protests against overtime increases asked, against the cancellation of the right of the employer to obtain personal records and physical examination of employees, and still further states that it would be impracticable to consider any other demands for equal hours irrespective of the work at hand.

Many factories today, says Mr. Merrick, were in danger of having to close down permanently because of lack of trade. Neither would it be feasible, continued the secretary of the employers' association, to establish a permanent system of closed shops in all the industries named. Finally, the letter states that the principles of the employers' association include a fair day's pay for a fair day's work, no limitations upon production, and the value of the premium and piece-work systems as a means of achieving production.

The metal trades council had drafted a schedule including a 44 hour week, double time for overtime and triple time pay for all holiday work, a system of weekly pay envelopes, only three days' pay to be held back, and all employees to be members of recognized trades unions.

The feeling of the members of the metal trades council, 6,000 in number, is said to be strongly in favor of accepting no compromise. Tonight's mass meeting of bona-fide trades union members of the craft at Massey Hall will decide the issue so far as the men themselves are concerned.

SITUATION RELIEVED

John Hopkins, business agent for the Toronto local of the International Union of Painters and Decorators, reports the strike situation slightly relieved. John Doggett, a member of the joint industrial council, stated yesterday afternoon that the situation remained unchanged so far as he was aware, but that the outlook was hopeful.

GENERAL CHANGE OF TIME.

Canadian Pacific change of time will take place Sunday, May 4th, from which date summer train schedules will be effective.



"Specials" AT Day's

THE New Store for Men

We are pleased and encouraged by our opening. We have promised the finest of hand-tailored garments at prices that would be impossible on the high rent streets. We are gratified that we are being taken at our word. Business men and young men out of khaki are showing great interest in the following specials:

TOPCOATS

Smart form fits, with silk linings. Green and brown fancy lozets, with silk yokes and sleeves.

\$25 BUSINESS SUITS

Wainstead English and Standard Models, smart, dressy tweeds and smooth cassimeres. Extra special value.

\$30

See our wonderful stock of modern, fine tailored clothes for men, together with our complete line of Collars, Shirts, Hosiery, and Furnishings.

Only fifty yards from high-rent Yonge St.

Day's

LIMITED

25 Adelaide East
48 Victoria Street
The Round Corner.

"BACK TO A JOB" SOLDIERS' BANQUET

With more than enough hosts for the hundred tables that will be set for the 1100 soldiers expected at the big banquet arranged by the Citizens' Repatriation League for Thursday night at the armory, and with the Toronto Canoe Club ministers prior to the "Big Four Drive" for \$1,500,000 in four days, May 6th to 9th, as the chief entertainers, the great shine promises to eclipse its predecessors. On this occasion a new idea prevails in that the scheme is to get the soldiers in direct touch and personal contact with the employers.

The slogan of this banquet is "Back to a Job," and the menu takes the form of an old-fashioned dinner. Tenderloin and onions, with fried potatoes are the chief attraction here, but the dinner will be topped off with ice cream and pie which the hosts will serve. Then, of course, there will be an abundance of smoke.

Any soldier who is disabled to the extent that he requires a convalesce in order to go to the banquet, will be well looked after and need only make his requirements known by phoning the Citizens' Repatriation League, Adel. 1760.

TORONTO ISLAND DELIVERY.

Delivery of The Morning World a Manlin's Island Centre Island, and Ward's Island will resume on May 1st. An early and efficient service is assured. Orders telephoned to Main 5308 will receive prompt attention.

ALLEGED BOLSHEVICS AND GERMAN PAPERS

(Continued From Page 1.)

following aliases: Annie Bancourt, and A. E. Brown. She also was born in Germany, coming to Canada at the same time as her husband. From Canada she went to Detroit. When she attempted to return to this city she was detained by the Canadian immigration inspectors for some time at the border. Eventually she was allowed to come back here and gained employment in a local institution under the name of Annie Bancourt. She is an expert photographer, and along with her belongings were found a quantity of socialistic propaganda giving the nationalities of the various revolutionists.

Caused Trouble.

Lieb Samsonavitch, alias Sampson, Black and Charnie, was born in Russia. He has caused a lot of trouble amongst the foreign element here by speeches delivered by him in different Sunday meetings.

Samsonavitch, the police say, was a student at Columbia University in the United States for three years. He was expelled from that institution for uttering seditious words. General Wood of the American army, was delivering a preparedness speech to the students of that university.

Later he tried to gain admission to Yale and Harvard Universities, but he was refused. He then came to Toronto. His application for admission was presented. He then went to Buffalo, and by way of a motor car, evaded the immigration men and crossed the international bridge into Canada without registering. He went on to St. John, New Brunswick, whence after being refused membership of a university, he came on to Toronto. Subsequently he tried to enter the Toronto University, but was turned down when the police made known his record, and showed that he was an undesirable in the United States.

Samsonavitch then became active in socialistic work in this city. On January 19 he spoke before a large gathering of foreigners in Broadway Hall, Spadina avenue. On Sunday, Feb. 23, he again spoke in the same hall, and the police dispersed the meeting. In his address at this meeting Samsonavitch advocated "bloody war." In March he addressed a gathering of foreigners from the steps of the city hall on the day that Watson and Cheeseman, radical socialists, were sentenced to jail by Magistrate Kingsford in the police court.

He broke up a meeting in front of the city hall and Samsonavitch led his followers to the Labor Temple, where he delivered an address. The police broke up the gathering with the assistance of police officers. Inspector of Detectives Guthrie said last night that the police had never known the police to be so engaged here at any legitimate work.

Notes of meetings of the parties seized by the police and now in their possession contained data concerning subjects discussed.

Contained in the data was the name of a certain Toronto printer who is described by the committee as being of great assistance to the socialist party and active in printing manifestos issued by the three prisoners during the past six months. It was shown that an attempt had been made by these parties to get into the legitimate labor organizations with a view to controlling or holding the balance of power. In the literature which Detective Maurer, of headquarters has in his possession, reference is made regarding the different Bolsheviki organizations in Canada, namely: the Communist party, International Workers, General Workers' Union, and the Revolutionary and Anarchists parties.

Inspector Guthrie said that the local police have now sufficient information to eradicate the menace. They have "lipped" the campaign in the "bud" to use a police term, and as they have had forwarded to them names and addresses of hundreds of active members of the parties residing in this city.

It was through the co-operation of the Dominion police under Acting Chief Commissioner J. Cowdman of the Dominion police, the immigration department and the local police that the three prisoners are at present confined in the Toronto jail.

SPRING ASSIZES HAS HEAVY DOCKET

One Murder, Three Attempts and Three Manslaughter Cases for Jury.

One charge of murder, three of attempted murder, one charge of attempting to write a police officer in the discharge of his duty, and one of criminal libel, make up the docket for the spring assizes, which will open before Chief Justice Sir William Mullock on May 5.

J. J. Agar of Simcoe, who acted in the same capacity at the 1918 fall assizes, has been appointed counsel for the crown.

The accused in the murder case is John Cook, who, it is alleged, killed Mrs. Huntley at 129 Campbell avenue in January last.

Charge of Auto.

George Barber, in charge of an auto which was struck by a gain at the G.T.R. crossing on the Kingston road, resulting in the death of Kathleen McIntosh, a passenger in the auto; John Warten, whose auto killed Rose Wilcox on College street, and Max Halpern, driver of the motor truck which killed Thomas Loughridge, will face charges of manslaughter. Those charged with attempted murder are George Serenck, who is alleged to have stabbed Vasil Nezherezky during a row in a York street restaurant; Vasil Velenoki, who, while attempting to escape from a truck, was alleged to have stabbed Vasil Nezherezky during a row in a York street restaurant; Vasil Velenoki, who, while attempting to escape from a truck, was alleged to have stabbed Vasil Nezherezky during a row in a York street restaurant; Vasil Velenoki, who, while attempting to escape from a truck, was alleged to have stabbed Vasil Nezherezky during a row in a York street restaurant.

PIANO BROKE HER LEG.

Mrs. Z. Scott had her right leg broken last night when a piano fell off the stage on her at a concert given in a downtown hall. She was removed to St. Michael's Hospital. Her home is in Brantford.

AYEARST DENIES SHARING SIDELINE WITH DETECTIVES

Tells Commission No Share in Moneys of the Agency.

GAVE SOLOMON I.O.U.

Had Nothing Whatever to Do With Hinch as to Loans.

With the exception of the addresses from counsel, the commission under Sir William Meredith, which investigated the O.T.A. charges, finished its labors yesterday afternoon after sitting for about three weeks.

Peter White, K.C., stated that the taking of evidence was concluded, but he was aware of a rumor that stated that Mr. Dewar had certain evidence which he did not wish to produce, because it would injure some of his friends. Mr. White further stated that in view of the cost of the commission it would be a pity if anyone were not satisfied that all had been made clear.

Robt. McKay, K.C., who represented Mr. Dewar during the hearing, however, produced the witness, and the addresses from the various counsel will be heard at the resumption of the commission this morning.

John A. Ayearst, the former chief license inspector, was the only witness on the stand yesterday, and he was given a hot cross-examination by Mr. McKay, who pronounced the witness on the matter of the balance of money which still remained in the bank in his (Ayearst's) name. Mr. McKay asked the witness if having heard of the \$40 taken up by Solomon for an overcoat, and knowing that Hinch got \$333 and some odd cents, and that \$330 still remained to his credit, would it not occur to him that an equal division had taken place between the three parties concerned? Witness stated that it would never occur to him.

Various Loans.

Mr. Ayearst told of the various loans which he had made from Solomon from the money which was on deposit in the bank in a special account.

Witness also related the happenings which led up to his taking charge of the money for Solomon and Hinch. He had no conversation with Hinch about the money at all; even when he issued the pattern for the \$333.85 he had done so at Solomon's behest. Mr. Ayearst stated he had not known what the relationship Hinch had to the money, except when Solomon told him to give him a cheque for the above amount.

The money had been coming in from the Duncan Detective Agency until the account showed \$1192 in the special account. Witness said he had known where the cheques came from, and he had endorsed them all. Shown some expense slips by Mr. McKay, witness admitted that he had made one out.

Harking back to the account again, Mr. McKay wanted to know, when Mr. Ayearst had drawn the cheque for Hinch, if he had told him how much there was in the bank. Witness replied that if Hinch had asked he (Ayearst) had told him. Someone, he said, did not know if it were Hinch, had asked him about the matter.

On One Occasion.

Asked if he had ever given Solomon any acknowledgment for money he had loaned, witness replied that he had given Solomon an I.O.U. on one occasion. Witness on being asked why he had closed out the account without the consent of Hinch, said he had nothing whatever to do with Hinch.

Mr. Ayearst, despite the strenuous crossfire brought to bear against him by Mr. McKay, stoutly maintained that he could not recollect having received any money from Hinch for deposit in the "special account." To the best of his knowledge all the money had been given him by Solomon.

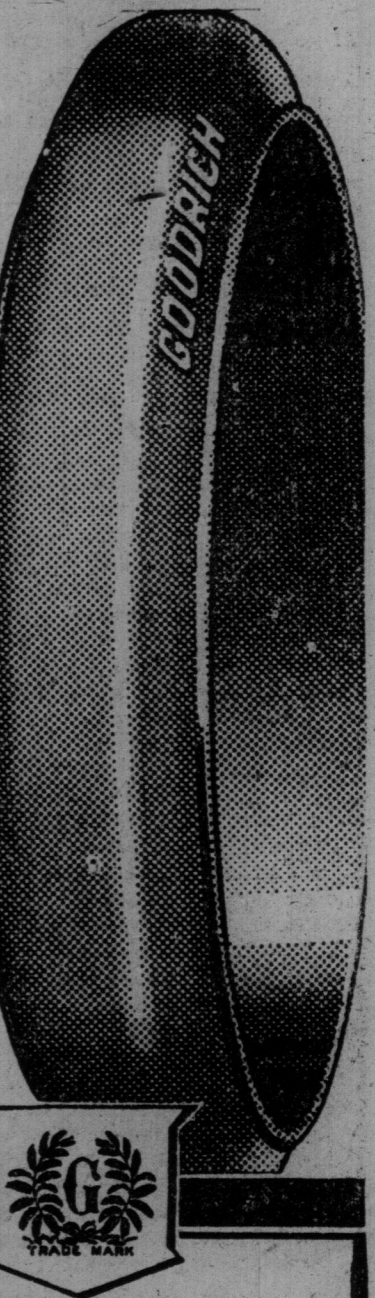
Furthermore, all withdrawals by Mr. Ayearst had been made with the consent and knowledge of Solomon. Mr. Ayearst stoutly denied that he had let the two operatives, Solomon and Hinch, go to the Duncan Agency entirely. "I wouldn't have thought of keeping them for five minutes if I had let them go," he said. "I'm positive that they were to pick up these conductors on my trips only further denied witness. Asked by Mr. McKay why he had said these two men full salary while they were on their western trip for the agency, witness pointed out that this was during June and August. The men had worked 25 days in the month, which computed at \$2.50 per day, amounted to \$62.50, he had paid them only \$80.

To Sir William witness stated that he had no hope, expectation, or promise to share in any of the money which was to be obtained from the agency. He also admitted to the commissioner by the latter's question that it was imprudent for a superior officer to borrow money from a subordinate, altho he had not thought so at the time. In regard to detective agencies witness thought it a wise thing to retain them to work in co-ordination with the other men.

BIG FOUR PARADE WILL TYPIFY ALL COMBINING

The first big public demonstration in connection with the "Big Four Drive" to raise \$1,500,000 in four days, May 6th to 9th, will be an immense parade typical of every branch of the Big Four organization. It will be held on Saturday afternoon next and will symbolize the four great institutions that have combined in this drive.

Queen's Park will be the starting place for the parade, which is to move off at 2 o'clock, and the proposed route is University avenue to Queen, Simcoe, King, Court street, station, a street sweepers, and John Turner, who is charged with attempting to murder one Pringle at 525 East Queen street. Hymie Davis will face a charge of having attempted to bribe P.C. David Dunn, and the charge of criminal libel against Harry Kortt, which has been three times reversed, is again on the list.



Buy Your TIRES As You Bought YOUR TRUCK

You did not sit in the seat or toy with the steering wheel when you bought your first truck—did you?

Appearance, atmosphere, comfort did not count. Facts and efficiency—the will and the stamina to do the work—you chose on this basis alone.

Buy your truck tires the same way! Seek facts and figures—such as GOODRICH offers you in DE LUXE Truck Tires.

Facts like these—S. Laakau, 1261 Third Ave., New York; De Luxe Truck Tires applied to 3-ton truck, intercity service, Sept. 1, 1916—today only half worn—letters "GOODRICH DE LUXE" easily readable. Distance traveled, 23,000 miles.

Also—Mt. Prospect Creamery Co., Chicago, fleet average of 20,000 miles on country roads from De Luxe.

Right here, in your own town, De Luxe Tires are making cost cutting records—let us show you them.

B. F. GOODRICH RUBBER CO. 482 Yonge St.

GOODRICH DE LUXE TRUCK TIRES

MANUFACTURERS, ATTENTION!

We want your float of returned men "back on their jobs" in the great illustrative and emblematic parade next Saturday afternoon, May 3rd.

Please Call Parade Committee, Main 3508.

THE "BIG FOUR DRIVE" MAY 6, 7, 8, 9

The Toronto World

FOUNDED 1850. A morning newspaper published every day in the year by The World Newspaper Company of Toronto, Limited, H. J. Maclean, Managing Director.

The Peace Dynamo Running.

Premier Lloyd George scores heavily in the decision of the peace conference to indict the Kaiser. It was one of the complaints made in the recent cabinet that the little Welshman was not implementing his pre-election pledges, and this matter of halting the Kaiser to trial was particularly noted.

While there has been plenty of time to carry out the idea, which was heartily endorsed and approved by all classes, we are not aware that anything has been settled about it. In England the suggestion is most cordially welcomed, and apparently the plan is to be adopted.

A Line of Cheer Each Day of the Year

By John Kendrick Bangs. (Copyright, 1919, by the McClure Newspaper Syndicate.) FRIEND AND ENEMY. I hold that man mine enemy who'd fill my heart with mistrust of my fellow men;

CANADIAN CORPS ELECTS OFFICERS

Canadian Club Favor Permanence of Corps as Organization.

HARRY LAUDER SECOND Tied in Drawing Audiences.

President, Major Percy Brown. Vice president, Major W. L. Grant. 2nd Vice President, J. W. Mitchell.

The above are the officers of the Canadian Club for the year 1919-20, as elected yesterday on motion of William E. Rundle and George A. Howell to adopt the nominating committee's report at the club luncheon yesterday.

Poland Necessary.

"Free Poland" has moved its publishing office from Washington to Chicago. The 20,000,000 of Poles in mid-Europe have been hoping for such recognition of their national unity as would enable them to become a real nation among the nations.

CENTRAL MEMBERSHIP.

Central G.W.V.A. reports a new membership for April of 357, and the secretary and assistant secretary claim for this record a first place among those of any branch in the Dominion.

SERVICE TO THOSE WHO SAVE

For sixty-four years we have studied the needs of every class of depositor and have developed a service that cannot be excelled.

THREE AND ONE-HALF PER CENT.

per annum will be credited to your account and compounded twice each year.

CANADA PERMANENT MORTGAGE CORPORATION

Toronto Street - Toronto. Capital (paid-up) \$5,000,000.00 Reserve and Surplus Funds \$3,672,693.77 Total Assets \$8,672,693.77

A LOYAL FRIEND WHEN FRIENDS WERE NEEDED



CANADA: You were with us in the Dark Days, Signor. May you share with us the Dawn of Peace!

THE PROMOTER'S WIFE

By JANE PHELPS. Barbara Spends the Evening Alone.

I did as Mr. Frederick suggested and ordered the car. At first I thought I would call for Lorraine or some other friend, then I decided I did not care to talk, and would take my boy.

"Where have you kept yourself?" he asked. "I have been to every blessed affair in the hope of seeing you only to be disappointed. Been busy with that wonderful house I expect."

"Yes, we think it very handsome. But really it is not the house which is to blame for my remaining at home. Mr. Forbes has been away a great deal lately, and I seldom if ever go without him."

"Thank you, that will be an unexpected pleasure. I have an appointment at the club. But don't let me spoil your drive, I have half an hour yet."

"His business is prospering, I hear." "Yes—but he works terribly hard." "I go wanted to add: 'And what else have you heard?'"

"What difference if one gets their enjoyment in work. Mr. Forbes fairly eats work." I gazed intently at him as he spoke.

"I dropped my whim companion, then went home. I found a message from Mr. Frederick." "If convenient I will call upon you about eleven tomorrow morning."

BRITISH LABOR SITUATION CAUSES UTMOST ANXIETY

H. H. Macrae of British Securities Company Details Personally Gathered Impressions of Most Important Subject Next to Peace Conference in British Empire.

H. H. Macrae of the British & Colonial Securities Co., who recently returned from a three months' visit to England, has given The World the following as his viewpoint on the British labor situation.

Next to the peace conference in Paris, the most important subject in the minds of British people is the labor situation in England; it has presented features of extraordinary difficulty, it has aroused feelings of utmost anxiety, the government has dreaded it, and the bankers and the manufacturers and the labor leaders themselves, it was known that Bolshevism had found its way by German means into Great Britain, and that the minds of the lower orders of the socialist class had been affected by the propaganda, while the spread of it in eastern Europe made it an increasing menace from day to day.

The danger was that the union leaders in the various branches of trade might be unable to control these lawless elements, and that the extremists with Bolshevist leanings might get the upper hand, and it was a very real danger indeed.

This was the situation in January, 1919, and it became critical when the triple alliance, as it is called in Great Britain, gave notice of a general strike to take place on March 15; the triple alliance is composed of the workers in the coal mines (the miners), the transport men, and the railway men, and a strike on the part of these three leading trades would have paralyzed all business throughout Great Britain, and have thrown the country into commercial chaos; the strike was declared after the vote had been taken by the unions in these respective trades, and was practically the unanimous desire of the workmen; the government sought to prevent the adverse vote on the strike by offers of concessions which had been entirely rejected.

The government, thru Mr. Lloyd George as premier, appointed a commission between the coal owners and the miners, the members being composed of representatives of the government and of the owners and of the unions. Mr. Smiley being the labor leader, Mr. Lloyd George addressed the commission at the opening session and made a strong appeal to the owners and to the miners to be reasonable, and for each one of them to abate their extreme demands, with a view towards some permanent settlement of the perplexing difficulties involved.

Upon the appointment of this commission, the two other members of the triple alliance, the transportation workers and the railway men, looked on, and it was hoped that in case there should be a settlement of the coal question they would join in it upon similar terms, which had been thrashed out between them and the government already.

The commission brought in three reports, one by the government members, one by the owners, and a third by the miners, but the owners afterwards concurred with the members of the government, and a majority report was presented, which appealed to the sense of everybody in the government, amongst the owners, in the unions, and everywhere else, and it was agreed to by the miners, as it might well have been, because the effect of the report was the defeat of the owners, and a justification in a large degree of the claims which the miners had made. The wonderful fairness of the report was the result of the largely in this result. Accepted Result. The transportation men accepted the result, but the railway men refused, what he had done for me. I smiled and think how needless it was. My mood again had changed. No one could make me distrust Neil.

THE DAY AT OTTAWA

By TOM KING

Ottawa, April 28.—The new membership of the house, and they are in the majority, are strictly for the first time today, the closure rule in action. They watch Hon. Arthur Meighen with keen attention, as he is the author of closure, and is always entrusted with its administration.

The motion for closure on the government's bill to establish the Canadian National Railway System, carried early this afternoon by a vote of 34 to 28. It was a party vote except that Fred Pardee and Donald Nicholson, who could not see why there should be such a terrible haste in getting thru one particular bill. The Unionist members generally supported the closure, believing that the measure had nothing constructive to suggest, and that no more time should be lost in creating the machinery for administering our great national railway system.

Under the closure rule, speeches are limited to 20 minutes each, and at 2 o'clock all the vote must be taken. This after all, gives the members an opportunity for discussion, and many members speak a great deal better under a time limit. They are naturally forced to come to the point if they really have anything to say, and much rambling discourse is likely to be eliminated.

Still the disposition to ramble in speech seems almost incurable. E. B. Devlin, Liberal member for Wright, who opened today's debate on the railway bill, rambled as far away as New Zealand, and the price of butter. Generally speaking, however, it was a public ownership debate, with everybody trying to get under the big tent. The Unionists naturally made the most of their public ownership achievements, and the Liberals tried desperately to get out of the corner into which they were led last Friday night by Messrs. Lemieux, Bureau and Lapointe, with the acquiescence, if not the approval, of Judge McKenzie. They nearly all of them today claimed to be real friends of public ownership, and discussed the sincerity of their opponents.

"Codlin's your friend, not 'Short," was the argument advanced from either side of the house, to the new bill may be reopened, but it is fairly safe to say that never happens. The workmen of England in all trades will not get better working conditions, they will have shorter hours, and much better than pre-war wages, but it has been made absolutely clear that they on their part will have to deserve these things, because the rest of the settlement will be the increase of production in all branches of industry. The men who have to spend their lives in a factory, or in a mine, or in a mill, have no off days or hours, and work with a will, and the owners on their part will have to introduce the most modern and effective machinery, to perfect their organizations, and cut out waste. It must never be forgotten that unless production is fully increased, the cost of living will be increased beyond what it was before the war, England would be unable to compete with foreign countries.

Mr. Lloyd George addressed the industrial conference and made a powerful personal appeal for peace, he said, amongst other things, that the armistice had been signed, the peace negotiations were rapidly approaching completion in Paris, and still the world was threatened with what might even be more disastrous than the great war, namely, industrial agitation carried to extremes; he called upon the contending parties to be reasonable and fair, and each to consider the position of the other, as having been the first to solve it would be a magnificent thing if it had in the great war might after having played the splendid part which it had in the great war might after having stood forth on the labor question as having been the first to solve it by improving the conditions of the laboring man, and establishing peace between capital and labor on a just basis; it would be an example to the whole world and one of which Britain might forever be proud.

Fear of Bolshevism. It so happened that before either of these government commissions met in London a fear of Bolshevism had become very real in the minds of the people; there had been strikes and threatened strikes on the part of the underground operators, and the miners, and even orders of the leaders in those trades, and against the wishes of the other unions; the tube workers and the underground operators had struck and deserted their posts without warning, causing great loss and inconvenience to the people, the same, and worse than all, the employees in the power stations thru-out London had given notice that they would strike on a given day, and put London in total darkness; this was averted by prompt action on the part of the government. Mr. Lloyd George made a great deal of these strikes and so did the press, as showing the length that some elements of labor were prepared to go against the welfare of the entire community, and he made it perfectly clear before the two commissions referred to, as Mr. Bonar Law also did in parliament, that if the coal commission did not result in a settlement, a strike would not be by the workmen against the owners, but against the community as a whole, and that the government would use its whole power to put it down; doubtless such talk as this had a modifying effect upon the extremists in the final result.

A Fair Basis. The industrial conference reached definite conclusions during the past two weeks, which are more or less acceptable to all of the parties, and in this way thru the findings of these two commissions a fair basis of arrangements has been arrived at and the crisis safely passed, it must not be inferred from these facts that the danger is all over because the final conditions of arrangements between the owners and the workmen will depend upon the manner in which the recommendations in the reports are carried out, and upon the good faith of the parties. Some of the promised benefits cannot be realized unless this is done, so that the trouble may be reopened, but it is fairly safe to say that never happens.

As chairman of the campaign committee of the "Big Four Drive" to raise \$1,500,000, May 6 to 9, Sir James Woods presided at a meeting of representative women in the King Edward Hotel yesterday, and explained the campaign and the work which the women should be asked to do. This was in respect to the tag day, and house-to-house canvass which will be conducted together May 9, the last day of the drive.

Gen. Gunn outlined the campaign in respect to the Citizens' Registration League, telling of the need for soldiers' club-houses. Horace Davison explained the details of the house-to-house canvass, and stated that for this purpose the city had been divided into districts, and that a corps of at least 3000 women would be needed. The objective was to be 100,000, which meant an average subscription of one dollar from 100,000 out of the 120,000 homes in Toronto.

Mrs. Church was elected honorary chairman, Mrs. T. Albert Brown, honorary vice-chairman, Miss F. Boland, organizer for tag day, and Mrs. Gunn, secretary of the women's committee.

OSGOODE HALL NEWS

Appellate Court, Second Division. List of cases for Tuesday, April 29, at 11 a.m. (City time). Adams v. Barlow. Dixon v. Back. Fallon v. McMillan. Re British Cattle Supply Co. and McHugh. Andrew v. Ault. Tennessee v. Woodbridge. Judges' chambers will be held on Tuesday, April 29, from 10 to 11 a.m. (City time), before Mr. Justice Middleton. Williams v. Toronto and York Radial Railway. The secretary of the appellate court dismissed the appeal of the Railway Company with costs. Rex v. Spence. The appeal of the defendant Rev. Ben H. Spence, from the order of Mr. Justice Magden, was argued before the second appellate court, and the court reserved judgment.

M SE

WESTREE, APRIL 28.—The new membership of the house, and they are in the majority, are strictly for the first time today, the closure rule in action. They watch Hon. Arthur Meighen with keen attention, as he is the author of closure, and is always entrusted with its administration.

The motion for closure on the government's bill to establish the Canadian National Railway System, carried early this afternoon by a vote of 34 to 28. It was a party vote except that Fred Pardee and Donald Nicholson, who could not see why there should be such a terrible haste in getting thru one particular bill. The Unionist members generally supported the closure, believing that the measure had nothing constructive to suggest, and that no more time should be lost in creating the machinery for administering our great national railway system.

Under the closure rule, speeches are limited to 20 minutes each, and at 2 o'clock all the vote must be taken. This after all, gives the members an opportunity for discussion, and many members speak a great deal better under a time limit. They are naturally forced to come to the point if they really have anything to say, and much rambling discourse is likely to be eliminated.

Still the disposition to ramble in speech seems almost incurable. E. B. Devlin, Liberal member for Wright, who opened today's debate on the railway bill, rambled as far away as New Zealand, and the price of butter. Generally speaking, however, it was a public ownership debate, with everybody trying to get under the big tent. The Unionists naturally made the most of their public ownership achievements, and the Liberals tried desperately to get out of the corner into which they were led last Friday night by Messrs. Lemieux, Bureau and Lapointe, with the acquiescence, if not the approval, of Judge McKenzie. They nearly all of them today claimed to be real friends of public ownership, and discussed the sincerity of their opponents.

"Codlin's your friend, not 'Short," was the argument advanced from either side of the house, to the new bill may be reopened, but it is fairly safe to say that never happens. The workmen of England in all trades will not get better working conditions, they will have shorter hours, and much better than pre-war wages, but it has been made absolutely clear that they on their part will have to deserve these things, because the rest of the settlement will be the increase of production in all branches of industry. The men who have to spend their lives in a factory, or in a mine, or in a mill, have no off days or hours, and work with a will, and the owners on their part will have to introduce the most modern and effective machinery, to perfect their organizations, and cut out waste. It must never be forgotten that unless production is fully increased, the cost of living will be increased beyond what it was before the war, England would be unable to compete with foreign countries.

Mr. Lloyd George addressed the industrial conference and made a powerful personal appeal for peace, he said, amongst other things, that the armistice had been signed, the peace negotiations were rapidly approaching completion in Paris, and still the world was threatened with what might even be more disastrous than the great war, namely, industrial agitation carried to extremes; he called upon the contending parties to be reasonable and fair, and each to consider the position of the other, as having been the first to solve it would be a magnificent thing if it had in the great war might after having played the splendid part which it had in the great war might after having stood forth on the labor question as having been the first to solve it by improving the conditions of the laboring man, and establishing peace between capital and labor on a just basis; it would be an example to the whole world and one of which Britain might forever be proud.

Fear of Bolshevism. It so happened that before either of these government commissions met in London a fear of Bolshevism had become very real in the minds of the people; there had been strikes and threatened strikes on the part of the underground operators, and the miners, and even orders of the leaders in those trades, and against the wishes of the other unions; the tube workers and the underground operators had struck and deserted their posts without warning, causing great loss and inconvenience to the people, the same, and worse than all, the employees in the power stations thru-out London had given notice that they would strike on a given day, and put London in total darkness; this was averted by prompt action on the part of the government. Mr. Lloyd George made a great deal of these strikes and so did the press, as showing the length that some elements of labor were prepared to go against the welfare of the entire community, and he made it perfectly clear before the two commissions referred to, as Mr. Bonar Law also did in parliament, that if the coal commission did not result in a settlement, a strike would not be by the workmen against the owners, but against the community as a whole, and that the government would use its whole power to put it down; doubtless such talk as this had a modifying effect upon the extremists in the final result.

A Fair Basis. The industrial conference reached definite conclusions during the past two weeks, which are more or less acceptable to all of the parties, and in this way thru the findings of these two commissions a fair basis of arrangements has been arrived at and the crisis safely passed, it must not be inferred from these facts that the danger is all over because the final conditions of arrangements between the owners and the workmen will depend upon the manner in which the recommendations in the reports are carried out, and upon the good faith of the parties. Some of the promised benefits cannot be realized unless this is done, so that the trouble may be reopened, but it is fairly safe to say that never happens.

As chairman of the campaign committee of the "Big Four Drive" to raise \$1,500,000, May 6 to 9, Sir James Woods presided at a meeting of representative women in the King Edward Hotel yesterday, and explained the campaign and the work which the women should be asked to do. This was in respect to the tag day, and house-to-house canvass which will be conducted together May 9, the last day of the drive.

Gen. Gunn outlined the campaign in respect to the Citizens' Registration League, telling of the need for soldiers' club-houses. Horace Davison explained the details of the house-to-house canvass, and stated that for this purpose the city had been divided into districts, and that a corps of at least 3000 women would be needed. The objective was to be 100,000, which meant an average subscription of one dollar from 100,000 out of the 120,000 homes in Toronto.

Mrs. Church was elected honorary chairman, Mrs. T. Albert Brown, honorary vice-chairman, Miss F. Boland, organizer for tag day, and Mrs. Gunn, secretary of the women's committee.

POLICE CHIEF ASKS MORE OFFICE SPACE

Chief of Police Grasset stated to The World yesterday afternoon that the police offices in the city hall were not large enough to comfortably quarter the police officers, and, with the increasing of the department, he contemplates asking the city council for additional space. An effort is being made by the chief to build the police force to at least pre-war strength. A number of much-wanted appointments are to be recommended by the chief to the police commissioners. Chief Grasset suggests that the city council should occupy a section of the committee room on the third floor, half of which is at present used by the juvenile court does not sit for over one hour in the morning, and in his opinion half of the room could be partitioned off. If granted the use of a portion of this room, Col. Grasset said he would move his office up there and partition a section of the space for his secretary's office, which could be also used as an ante-room, which deputations waiting to appear before the chief would be his intention to do. It would be his intention to do. Inspector of Detectives Guthrie to occupy the present office, and Sergeant Wallace to occupy the present quarters. Police matters, said the head of the force, require a great amount of confidential interviews with persons, and the present office was not suitable for these. Under the present system the sergeant of detectives, when discussing confidential police matters, has to either use the inspector's office or take his interviews in the corridor. Deputations waiting to have a hearing with the police board also applied to the committee room. A time is also lost by the chief having to call by his secretary from a room some distance from his office. It is the intention of Chief Grasset to approach the city officials in the near future regarding extra space.

Many Promotions. A number of deputations are expected to appear before the committee today. Owing to the board not having met last week, there is a lot of police business to be transacted, chiefly a number of promotions both in the uniform and plainclothes ranks. Two inspectors, eight sergeants, eight patrol sergeants, six full detectives and a number of acting detectives are to be made. The putting into effect of the eight-hour straight day for uniform men, and the extra leave has decreased the strength of the department 48 per cent. Owing to this, a number of busy intersections are left without traffic men during the hours of the day. After all of the resignations are replaced on the force, it is likely that an effort will be made to take on at least 100 additional constables, to provide police protection in proportion with the rate at which the city is expanding.

WEST TORONTO G.W.V.A.

Sixty new members is the record of West Toronto G.W.V.A. since last general meeting on April 17, and the prospects for the future are said to be of the best.

WEST SHINING TREE, ONTARIO'S NEW GOLD CAMP

District, Which Has Come Decidedly to the Front in the Past Few Months, Shows More Visible Surface Gold Than Any Other Camp in Ontario--Four or Five Properties Have the Appearance of Being Fabulously Rich, and on a Score There Are Outcroppings of the Yellow Metal--Discovery of Tellurides Over Wide Area is Regarded by Geologists and Mining Engineers as of Great Significance---Values at Depth Will Ensure the Permanency of West Shining Tree Area as a Gold Camp, Second to None in Dominion of Canada ---Ore Lends Itself Readily to Treatment, and Relatively Low Cost of Operations Will Be Favorable Factor.

Westree, April 23.—This is a station on the Canadian Northern Railway, 79 miles northwest of Sudbury. It was formerly known as Kashbaw. It is the entrapment for the great gold district of West Shining Tree. This district comprises four townships—Asquith, Churchill, MacMurphy and Yawcutt—forming a square twelve miles each way. The nearest mines are about twenty miles from here. The mines in the north-most of the four townships are about twenty-five miles away. The Ontario government have, however, constructed an automobile road for the first 14 miles. Here there is a first-class wooden bridge on rock-filled piers across the Opickinimka river. The remaining eleven miles are suitable for wagons, and when the contemplated improvements are carried out early during the coming summer, automobiles will be able to reach any of the mines in two hours.

variations. It will be necessary here to quote from sessional paper No. 26, published by the Geological Survey Branch of the Department of Mines, Ottawa. This paper, which is in fact a government report, says that Shining Tree is the extreme southwestern lobe of a great Keewatin gold-bearing area which continues northward to Porcupine. There is a wide extension of ellipsoidal andesite with quartz porphyry, porphyritic syenite and felsite, resembling rhyolite. We find also hornblende schist, trachyte flows and tuffs. The porphyritic syenite is worthy of special notice. It generally occurs in bosses it is believed to have much to do with the mineralization of the region. This type of rock is the main source of the gold at Matachewan and Kirkland Lake. At Shining Tree there are also many dikes of quartz and olivine diabase cutting the andesite and other lavas. Banded iron formation is the chief sedimentary material.

seem to be distributed with as much evenness and regularity as in the great "reef" in the Rand. The Churchill and the Herrick have the same characteristics as the Wasapika so far as assays have gone, while the Atlas and Westree have produced the richest ore ever found in Ontario outside of the famous Croesus in the township of Munro. While the latter has only a single ore shoot, there are many veins in these great properties in Shining Tree which are exceptionally rich.



WASAPIKA SHAFT AND HEAD-FRAME.

longs to the Algonian epoch. Its intrusion meant fracture, heat and pressure. It reinforced the granite and intensified the various forces operating to concentrate the gold where we now find it. There are sound geological reasons for the exceptionally well defined and rich veins of Shining Tree. A Single Metallogenic Province. We have sketched conditions which show that the Keewatin schists, such as occur in Northern Ontario, are the most favorable for gold. All the great goldfields of the world are in ancient rocks.

found in considerable quantities. The principal occurrences of these salts of the precious metal are at Kalgoolie, Australia, and Cripple Creek, Colorado. The former was famous in its day for high-grade ore, and Cripple Creek has produced \$300,000,000 during the last quarter of a century. Much of the ore was unusually rich. Tellurides of gold have been found in various other parts of the world, but not in important quantities. With Shining Tree added to its other localities, northern Ontario will have by far the greatest telluride gold fields in the world. Cross Courses at Shining Tree. The strong east and west vein systems of Shining Tree are intersected at right angles or nearly so by one main north and south system. This is represented by the great Ribble vein, which is now being developed at the Wasapika gold mines. This is one of the longest and strongest ore channels in northern Ontario. It can be followed for nearly three miles to the south end of Granite Lake. It is the very heart and centre of the auriferous area, and it attains its greatest development on the Wasapika. It is notable that of the five great properties already mentioned two, namely, the Atlas and Westree, are east of the Ribble, and two are west, namely, the Churchill and Herrick. Their differentiation, working properties shows a keen sense of the favorable geological conditions. It is well-known that cross veins enrich one another, it is presumed, because of the increased facilities in the way of channels for the ascension of auriferous solutions.

would be 85 miles shorter than the present route and would find "quite easy gradients along the river valleys. There is no doubt that a railway will fill this gap in a few years. A Great Mineral Region. Through its entire length the proposed line would pass thru what is primarily a great mineral region, the greatest in Ontario, if not in the world. The nickel fields of Sudbury are without the semblance of a rival. Their output to date exceeds \$250,000,000. It will run into billions of dollars before their exhaustion. Shining Tree is due north of the nickel region, a distance of about 60 miles, and Porcupine is due north of Shining Tree, about the same distance, while Cobalt is 60 miles to the east. Revenue From a Railway. It is 155 miles from Cobalt to Porcupine by the T. and N. O. Railway. Fully four-fifths of this mileage is in the clay belt and dependent on agriculture, but nevertheless, the mining industry furnishes 46 per cent. of the total revenue of the road as against 22 per cent. for agriculture. It is therefore fair to assume that a railway thru what is essentially a mineral region would be highly profitable. Mining is already the most rapidly growing industry in the great province of Ontario—a province whose annual output of metal now exceeds the combined output of all the other provinces of Canada, including the world famous placers of the Yukon. This is the most satisfactory testimony to the primacy of our ancient metallic rocks. Apathy Misplaced. In view of the great natural resources of northern Ontario, especially in gold it is difficult to find an adequate explanation for its retarded development. In the United States or in any of the populous European nations it is certain that a gold field as rich as Shining Tree would come at once under intensive exploitation. Gold does not occur in such a highly concentrated form in any other part of the world. But Canadians are apparently oppressed with the sheer magnitude of their opportunities, and until very recently no excitement nor even moderate enthusiasm was aroused by the wonderful outcrops of visible gold on the rich properties of Shining Tree. Exhaustion of World's Gold. And this notwithstanding the fact

Discovery of Westree. Shining Tree is not a new discovery. It was known in 1811, but then it was sixty miles from any railway, and besides most of the available mining capital was taken up with Porcupine. At all events Shining Tree was somewhat neglected until the present year. Prospectors were unable to sell and many of them remained in the district. Within the last four months, however, nearly all the properties in Shining Tree have been optioned or sold, and the outlook now is for great mining activity in the near future. Shining Tree has more visible gold than any other camp in Ontario. There are a score of properties with outcroppings of gold. There are four or five fabulously rich. On the Atlas and Westree, formerly the Caswell, there are sheets of pure gold five-eighths of an inch thick and four feet long.

The Source of the Gold. The principal source of the gold is granite. It is in much greater volume than the syenite. Most of the rocks are older than the granite batholith and are greatly metamorphosed, becoming sheared to chlorite and sericite schists or when near granite contacts recrystallized into hornblende schists. The richer veins are usually from one to three feet wide, but they are always accompanied by pronounced shearing and according to sessional paper No. 26, the schistose wall rock carries gold as well as the quartz veins, the aggregate being a very large body of high-grade ore.

Values Go to Great Depth. Values will also continue to great depth. The government report already referred to shows a formation similar to Porcupine. In both cases eruptions of granite brought in the gold. Shining Tree has also syenite schist and metamorphism. These gold fields are among the oldest in the world. The originally massive lava flows have since ejection been greatly schistified and altered; and besides they have been deeply weathered and broken down. The thinning sediments were formed of fragments of these lavas and other ancient rocks. These sediments consolidated a distinct series several thousand feet thick before the Algonian epoch. The schistification and degradation of the original volcanic flows have so affected their identity that it is in most cases impossible to say whether they were derived from granite syenite diorite or gabbro. Rhyolite was identified at Lightning River and was there found to contain \$1.50 in gold per ton. The Keewatin schists form as a rule, the basement igneous complex in our various gold fields. The Age of the World. Lord Kelvin estimated that the

of many forces over immensely long periods of time as the earth slowly cooled. Permanent Ore Deposits. The continental mountain making of the much later Tertiary age caused the arctic cold. Prior to the uplift of the Andes and Rockies, there was a warm climate even in the farthest north and south. But during the Algonian, the vein-filling process was slowly and thoroughly done. Hence, in the Keewatin schists of northern Ontario are the greatest gold deposits in the world. They continue to the lowest practicable mining depths. The only permanent deposits in the United States are found in archaic schists. The Homestake, South Dakota, the Mother Lode, California, and the mines of Alaska are deep seated. Most of the other mines belong to the Tertiary mountain making epoch. The uplift of the great mountain ranges in both hemispheres, brought about a cold climate in the temperate and polar regions. The vein filling process was prematurely arrested and metal deposition was largely confined to the surface. Conditions were not as favorable for great accumulations of gold as they were during the Algonian epoch.

A Prior Age of Gold. The older rocks have been subjected to much metamorphism. The pre-Cambrian is the great metal-bearing series. It seems certain also that there was an age of gold long before the Algonian, probably shortly after the crust of the earth solidified. The upper portions of these ancient veins have been removed by erosion, and the remnants have shared in the metamorphism of the schists, so that no evidence of their origin remains. The metallic contents of these remnants would, however, be transferred to and deposited in veins during the Algonian metallogenic epoch.

The Shear Zones Payable. Geologically, Shining Tree is fully equal, if not superior to Porcupine. The great chonoliths of quartz porphyry which we find at Porcupine are, however, not repeated at Shining Tree, and there is porphyritic syenite, it does not occur to the same extent as at Kirkland Lake or Matachewan. On the other hand, the veins are very numerous and may be considered beyond the usual size, when the shear zones are considered. W. H. Collins, the celebrated geologist, who prepared the sessional paper No. 26, already referred to, says that gold occurs in these shear zones. This makes the total payable area unusually large. Tellurides of Gold. The recent discovery of calaverite, the richest telluride of gold at the Holding property, gives considerable prominence to Shining Tree. In combination with tellurium gold is generally

that the world's available supplies of the precious metal are being rapidly exhausted, while the demand is now more extensive and more insistent than in any previous economic era. All the older mines are now being depleted of their reserves, and the only new regions of undoubted promise are the Far East, India and northern Ontario. The Central Rand is waning after a production of two and one-half billions of dollars. The output from Australia is down one-half. India has seen its best days, while South America and Asia may never be important. And in the United States the cream of the gold industry was gathered in the second half of the 19th century. Vast Mineral Resources. More than half the total area of Ontario is occupied by metal bearing rocks of the pre-Cambrian era. Here in fact was the nucleus of the continent, when over the rest of this hemisphere the primal ocean rolled. The archaic or Keewatin schists begin in northern Ontario and stretch two vast arms, one northeast and the other northwest of Hudson Bay. These are the oldest and probably the greatest metal bearing rocks in the world, and yet Sudbury and Cobalt were the direct result of railway building and not these two we would probably not have either Shining Tree or Porcupine. Our great mining regions came unsought. They have been thrust upon us and as yet are not even half appreciated. The very plethora of riches tends to satisfy. But we are nearing the threshold of a new era. Matchless opportunities will no longer be ignored, and the greatest of all can be found in the new gold district of Shining Tree.

One nugget when melted down contained \$2,200. A High Grader's Paradise. In the earlier days it was necessary to camouflage the various outcrops in order to protect them from high graders. But, notwithstanding all precautions, it is known that several prospectors were able to live comfortably from the proceeds of their workings. And one nugget surreptitiously sold in Sudbury brought \$1,500. It was no doubt worth twice that sum. Prospecting expenses have been covered in many cases by small shipments of high-grade ore from some of the mines. It is well-known that lots of 600 pounds or so of selected ore have often brought more than \$3,500, and the specimen amount is not found everywhere, or in unlimited quantities, it nevertheless, has a much larger distribution than in any other portion of Northern Ontario. The ultimate production of the district ought to far surpass that of Cripple Creek, Colorado. Geological Features of Camp. Notwithstanding its exceptionally rich ore Shining Tree is not a geological freak. It is Porcupine with some

townships of MacMurphy and Churchill. Here there is a string of remarkable properties grouped in a nearly east and west line for a distance of two miles. From east to west are, (1) the Atlas; (2) Westree, formerly the Caswell; (3) Wasapika; (4) Churchill; and (5) Herrick. In this locality there is a central belt of schist of the Keewatin era with rhyolite on the west and andesite on the east. At the contact with the Keewatin schist the andesite has changed to propylite and this marks a belt of special values. Andesite is the volcanic phase of the plutonic rock diorite. MacLaren, who is writer on gold, says that andesite is the only volcanic rock that is strikingly auriferous. In fact, he goes further and declares that these ancient schists and andesites represent the bulk of the world's auriferous rocks. Five Great Properties. The five great properties already mentioned are especially promising. In them the gold is very evenly distributed. Out of one hundred assays on the Wasapika there has not been a single blank. In fact, values here

world had hung in space as a separate physical entity for 100,000,000 years. His calculations were based on the assumed rate of cooling, but the subsequent discovery of radio activity has put back the clock of geological time for an immeasurable span. It is now known that radium has been constantly renewing the static heat of the earth. The rate of cooling is very slow, and life in its lowest forms began at least 1,000,000,000 years ago. The Algonian Epoch. This closely synchronizes with the Algonian epoch, or that of the genesis of gold in northern Ontario. At this time the earth was still very hot. The atmosphere was heavy with carbonic acid. The outer crust of the globe was thin. The seas were still steaming, and they held the little life then existing. Great eruptions of granite, and minor eruptions of syenite during the Algonian opened veins or ore channels at Shining Tree generated heat, which reinforced the static heat of the earth and set in circulation immense quantities of hot water. Thus the precious metal was leached from the surrounding rocks and from below, and deposited in the veins. There was the ceaseless operation

metal deposition. They must at least have prolonged the period during which the accumulation of gold was under way. The Quartz Vein Type. The ore deposits of Shining Tree belong to the quartz vein type. At Kirkland Lake, where porphyritic syenite is the source of the gold, we find impregnations of the country, there is, of course, considerable silicification, particularly in the richer mines, but quartz does not occur to the same extent as at Shining Tree or Porcupine. Syenite alone seems to mean less silicious ore bodies. But granite predominates at Shining Tree. It occurs in large masses on the southern and eastern border of the region. Syenite shows in bosses in the vicinity of the great veins. All essential factors have concurred in making Shining Tree an unusually rich mining region. The Shear Zones Payable. Geologically, Shining Tree is fully equal, if not superior to Porcupine. The great chonoliths of quartz porphyry which we find at Porcupine are, however, not repeated at Shining Tree, and there is porphyritic syenite, it does not occur to the same extent as at Kirkland Lake or Matachewan. On the other hand, the veins are very numerous and may be considered beyond the usual size, when the shear zones are considered. W. H. Collins, the celebrated geologist, who prepared the sessional paper No. 26, already referred to, says that gold occurs in these shear zones. This makes the total payable area unusually large. Tellurides of Gold. The recent discovery of calaverite, the richest telluride of gold at the Holding property, gives considerable prominence to Shining Tree. In combination with tellurium gold is generally

shooting on the Mysore the most notable known in the history of gold mining. We have also the very high authority of Waldemar Lindgren of the United States geological survey as to the significance of rolls in auriferous veins. Mr. Lindgren says that they are always considerably richer than veins more regular in their course. Algonian Epoch Very Favorable. The ore deposits of Shining Tree originated at the most favorable period in geological time, if much earlier they would have been largely eroded away. If later the crust of the earth would have been thicker and the heat less. Fracturing would not have been so extensive and the leaching power of hot water would have been considerably restricted. During the Algonian epoch the region of fusion was close to the surface. The ore channels would probably connect with the zone of flowage and the precious metal would be drawn from great depths, as well as laterally, and deposited in the veins as temperature and pressure diminished. There was prolonged heat and unlimited time for this great operation; in fact, all the conditions were favorable for the concentration of gold on a great scale, much more so than during the later Tertiary metallogenic epoch. The elevation of Shining Tree is over 1,200 feet above the sea. It is more than 100 feet higher than Porcupine. Streams having their source twenty miles south of Shining Tree ultimately join the Mattagami River which after affording splendid water powers at Wawaion and Sandy Falls for the use of the mining companies at Porcupine finally reaches Hudson Bay. The natural route to Porcupine is by way of Sudbury and Westree. It

that the world's available supplies of the precious metal are being rapidly exhausted, while the demand is now more extensive and more insistent than in any previous economic era. All the older mines are now being depleted of their reserves, and the only new regions of undoubted promise are the Far East, India and northern Ontario. The Central Rand is waning after a production of two and one-half billions of dollars. The output from Australia is down one-half. India has seen its best days, while South America and Asia may never be important. And in the United States the cream of the gold industry was gathered in the second half of the 19th century. Vast Mineral Resources. More than half the total area of Ontario is occupied by metal bearing rocks of the pre-Cambrian era. Here in fact was the nucleus of the continent, when over the rest of this hemisphere the primal ocean rolled. The archaic or Keewatin schists begin in northern Ontario and stretch two vast arms, one northeast and the other northwest of Hudson Bay. These are the oldest and probably the greatest metal bearing rocks in the world, and yet Sudbury and Cobalt were the direct result of railway building and not these two we would probably not have either Shining Tree or Porcupine. Our great mining regions came unsought. They have been thrust upon us and as yet are not even half appreciated. The very plethora of riches tends to satisfy. But we are nearing the threshold of a new era. Matchless opportunities will no longer be ignored, and the greatest of all can be found in the new gold district of Shining Tree.

shooting on the Mysore the most notable known in the history of gold mining. We have also the very high authority of Waldemar Lindgren of the United States geological survey as to the significance of rolls in auriferous veins. Mr. Lindgren says that they are always considerably richer than veins more regular in their course. Algonian Epoch Very Favorable. The ore deposits of Shining Tree originated at the most favorable period in geological time, if much earlier they would have been largely eroded away. If later the crust of the earth would have been thicker and the heat less. Fracturing would not have been so extensive and the leaching power of hot water would have been considerably restricted. During the Algonian epoch the region of fusion was close to the surface. The ore channels would probably connect with the zone of flowage and the precious metal would be drawn from great depths, as well as laterally, and deposited in the veins as temperature and pressure diminished. There was prolonged heat and unlimited time for this great operation; in fact, all the conditions were favorable for the concentration of gold on a great scale, much more so than during the later Tertiary metallogenic epoch. The elevation of Shining Tree is over 1,200 feet above the sea. It is more than 100 feet higher than Porcupine. Streams having their source twenty miles south of Shining Tree ultimately join the Mattagami River which after affording splendid water powers at Wawaion and Sandy Falls for the use of the mining companies at Porcupine finally reaches Hudson Bay. The natural route to Porcupine is by way of Sudbury and Westree. It



WASAPIKA BOILER HOUSE.



Caswell Camp on Wasapika Lake—View of Saville Vein—At this Point.



View of Open Cut and Shaft No. 1. At this Point.

REMARKABLY RICH ORE ON HOLDING PROPERTY

Yield of Two Hundred Dollars Per Ton Shown By Channel Sample After Removing Visible Gold--R. I. Henderson's Initiative is Re- warded.

When things occur in New Ontario, they come as a bolt from the blue; either mines are or they are not. All the mines of Cobalt were ore producers on the surface and the same is true of the great gold mines of Porcupine.

It was the fact that a north Ontario mine is so rich in gold that it may be said to be a deposit of gold without exception, no great mine of surface ore found in New Ontario has been put out on being put to the test.

Individual initiative and the willingness to back faith with dollars has brought rewards to many a mining man who carried the courage of his convictions into the development of gold and silver properties in northern Ontario.

A remarkable discovery has been made in the West Shining Tree Lake district—the new mine of the holding property in New Ontario—Mr. I. Henderson, who of his own initiative and at his own expense, has opened the Holding Properties and has already produced a quantity of ore of such remarkable richness as to draw the eye of the beholder and to inspire the ordinary searcher after easy money to ask: "Is there any other such mine?" To the mining man, it is almost unbelievable, yet it is nevertheless a fact, that a channel sample taken over eight feet and from which the visible gold was removed, gave a yield of \$200 to the ton. In six feet of ore, it is estimated that 3000 tons of it will run into the thousands of dollars per ton.

This is sufficiently surprising, but when added to this, it is considered that the geology of the holding property is permanent, the surprising nature of the deposit is set forth. By the gold occurring in the planes of the shear zone it is clear to geologists that it is in the nature of a secondary enrichment. A dike of bird-eye porphyry over 100 feet to the east of the shaft and a similar intrusion of diabase cutting the vein on the southwesterly side of the shaft, substantiates this theory as to the genesis of the gold.

In his office in the Lumsden Building.

Mr. Henderson has open for inspection, at least five hundred pounds of ore from this new mining wonder, and if a revolution of the world is desired, it may be had here. This has been the privilege of the writer.

The ore consists of bleached keewatin rock—the geological series in which the big mines of Porcupine occur—and masses of blue quartz. The gold appears in the quartz and along the abraded faces as if a fairy of the wilds had attempted her "pretence" hand in the manufacture of jewelry. It does not require the re-agent of the chemist to determine this wealth; it winks and glimmers at you.

One wonders when he sees this ore, what number of millions lie hidden beneath from whence this taken comes? Like many great mines, there is a romance surrounding Mr. Henderson's bonanza. When he acquired the claims some six months ago the shaft was sunk to its present depth; it remained for his initiative to drive the cross-cut that revealed the hidden wealth. So nearly are great fortunes missed in mining.

In this connection it is recalled that prospectors sat upon the land that now makes the assets of the Holding Mine and sunk in a pit six feet deep, they abandoned the prospect.

Not so Mr. Henderson, he stayed with the game. He intends forthwith to install a plant and actively prosecute development work and to this end is having plans formulated.

The ore body at the Holding Mines, as at present developed, is indicated to be two feet 8 inches wide, the purpose of estimating the ore in sight, a width of 10 feet was taken.

There is no doubt that the success which has attended Mr. Henderson will do much to add to the general interest in the new region of West Shining Tree.

The Holding claims are described as T.R.S. 118 and T.R.S. 3100, and are situated on Cow Moose Lake, in the township of Asquith, and in what is locally known as the West Shining Tree gold area, about 20 miles from the Canadian Northern Railway station of West Tree.

WASAPIKA SPEEDS UP TO BECOME PRODUCER

Fifty Thousand Tons of Ore Are Indicated and in Sight, and Hundred-Ton Mill Is Expected to Be in Operation This Year.

Too often happens that the first discovery in a mining camp becomes eventually one of the leading properties, the present prominence of the Wasapika gold mine is not due to early recognition of its merits. The big outcrop of rather massive quartz on the Gosselin was one of the first to attract attention. Large bodies of quartz, resistant to weathering and stand up prominently, but they seldom become the most productive, the eye appeals to prospectors and others without much technical knowledge.

But the great Ribble vein on which the future of the Wasapika gold mine is largely based remained unnoticed until a trained expert came into the field. Its value was first recognized by Geo. R. Rogers, E.M., the consulting engineer, and general manager of the company.

Mr. Rogers is a native of New South Wales and a graduate of the famous Bachelor school of mines. He was born and bred in his profession, and has lived by it all his life.

In 1918 Mr. Rogers made a prolonged visit to West Shining Tree. Prior to that he had examined and studied every gold camp in northern Ontario. He was prosecuting a patient and painstaking search for extra desirable properties, and after an exhaustive study of the geological conditions at Shining Tree, and a careful special investigation of the Ribble vein he directed the company to Mr. Rogers sampled this great vein over a total length of 1800 feet and 101 assays were taken on such a single failure to obtain gold and surface values were proved to be \$10 per ton. The vein more than stood the test.

The Ribble has both quantity and quality. The average width is five feet, but there is more than a possibility of similar values for a total width of 80 feet. The vein lies between and on the east and felsite resembling rhyolite on the west with a contact zone 50 feet wide, marked by a shallow red vine. Here the shaft is going down in ground greatly altered, broken and mineralized, an exceedingly favorable location for an unusually large body of ore. In fact, all the conditions strongly favor the conclusion that the entire contact will carry payable values.

The values so far obtained are remarkable for such a length on the surface. Equally good results have never

before been found in Ontario when it is borne in mind that every sample carried important values in gold.

The Wasapika kept moving, the slowly, during the closing years of the war. But with the signing of the armistice, the mine resumed on an adequate scale. It has now a fully equipped mining plant, two machines in the shaft and a 750 foot Rand air compressor.

The shaft is now approaching the 100-foot level. There will be a crosscut at that depth to test values in the contact zone. This however will not be an interruption in shaft sinking. At the 200-foot level there will be another crosscut, and at this stage Mr. Rogers is hopeful of very decisive results.

50,000 Tons Indicated.

There are now 50,000 tons of ore indicated and in sight, and the prospect for large additional tonnages are exceedingly favorable.

The mine has a full year's supply on hand, including provisions, hay, oats, dynamite, light, hardware, and in fact, practically every element or article necessary to carry on the work.

Competent authorities consider the Ribble one of the most promising veins in the camp. The estimate in which it has held by mining men was shown immediately that fighting ceased. Two consequences of the success of the Wasapika, Shining Tree became at once the center of great activity. Many properties were bought outright, others were placed under option and preparations are now under way for vigorous mining operations during the coming summer. But without the Wasapika to show the way there would be few of these other mines to follow. In fact, the reputation of the Wasapika at Shining Tree is equivalent to that of the Hollinger Consolidated at Porcupine.

Improved Conditions.

The improved conditions are also reflected in better means of access to the region. At the "half-way" or bridge across the Opikimimika River an hotel and general store have been established. Here food and lodging are available as well as all kinds of supplies for tourists, prospectors or miners. Motor trucks and motor cars also move freight and passengers to the railway to the mines. The 21 miles will be covered in less than two hours.

The outlook is so highly favorable at the Wasapika it is now expected that a 100-ton mill will be in operation before the close of the present year.

ASK BIG PRICE FOR GOSSELIN PROPERTY

"Big Dome" of Camp Shows Gold in Several Outcrops of Quartz.

The Gosselin Gold Mines own 371 acres on the boundary between Churchill and Asquith Townships. This is the "Big Dome" of the camp. There is one outcrop of quartz 100 feet long by 60 feet wide, and also two smaller ones, all showing gold. The property has been under option to capitalists in Duluth. There is a shaft down 50 feet, and considerable stripping and pitting.

Negotiations for sale are now under way. It is said that the price asked is \$1,000,000. This was the price of the West Shining Tree early discoveries.

RICH VALUES PREVAIL ON BUCKINGHAM GROUP

Two Shifts of Men Working on the Property.

Very promising discoveries are being made on the properties operated by the Buckingham Mines, Limited. This company owns two claims in the township of Asquith, and one in Fawcett, just alongside.

The Buckingham Mines, Limited, are a closed corporation, owned by business and mining men of Columbus, Ohio. They have a shaft sunk to a depth of 85 feet on a vein which carries high-grade ore of a quality similar to those of the other Shining Tree properties. They are working two shifts of men under the management of C. W. Cottingham, who is president and general manager of the company.

Last week Mr. Cottingham shipped out some spectacular specimens that were simply ribbed with gold. Mr. C. S. Buckley, vice president of the company, and informed The World reporter that work would be energetically continued, and arrangements are being made to install additional machinery.

The Buckingham group are two claims removed from the celebrated Holding Properties.

PROGRESS AT MATACHEWAN.

Work is proceeding at a fast rate at the Matachewan Gold Mines, in the Port Matachewan district, and by July 1, it is expected that the shaft will reach a depth of 200 feet. An extra boiler was taken into the property a few weeks ago. The shaft is vertical and is expected to pass thru the ore and reach the foot wall at a depth of 200 feet.

Diamond drilling has shown that the deposits on the Otisse are unlike anything else found in northern Ontario. The ore occurs in bulges, sometimes as nuggets little ore is found. The distance between ore lenses is up to 150 feet.

WORLD TO BE COMBED FOR PRECIOUS METAL

Little Gold and Silver in U. S. in Relation to Obligations.

Spokane, April 28.—Mining men of the northwest are confidently expecting a big scale, one prominent operator stated that in his opinion the world will be combed for mining properties and the

The Cornerstone of Wealth

At this particular time in the history of the world a successful speculative investment is of greater value than ever before, and discerning investors are keen to avail themselves of the opportunity. The Gold Mining Industry of Ontario is now firmly affixed upon a base as staunch and permanent as Gibraltar and is gradually becoming pre-eminent among the Dominion of Canada's most important assets. Herein therefore lies the cornerstone of wealth and man's earning power may be increased to a greater percentage through a stock-ownership in a high-grade gold producer, especially if obtained at the very outset, than in almost any other channel.

The greatest enemy to the gold mines—War—is blotted out and nothing appears on the horizon to interfere with the complete development of the rapidly growing West Shining Tree Camp, which already shows signs of becoming the richest goldfields ever discovered on this Continent.

Authentic reports from West Shining Tree show phenomenally rich gold values exist on every property under aggressive and conscientious development. Several of the foremost mining engineers and geologists of United States and Canada have already been attracted to this new Eldorado and as yet every report has been entirely favorable and hopeful for West Shining Tree becoming at least as productive in the precious yellow metal as the world-famed Porcupine Camp. Engineers of world-wide reputation representing the most influential financial interests of England are now on the high seas to visit, examine and make report on the spectacular gold discoveries already recorded in West Shining Tree.

WEST TREE MINES LIMITED

A LIMITED OFFERING OF WEST TREE MINES LIMITED SHARES AT 28 CENTS A SHARE

PAR VALUE \$1.00 — NO PERSONAL LIABILITY — NON ASSESSABLE

This offering is being made at a price so attractive that it should quickly provide the necessary funds to resume active mine development operations to reach the producing stage as quickly as possible.

The fact of the Caswell property (now the West Tree Mines) being well-known in mining circles, together with the present offering being limited and at such a low price, there is practically no doubt West Tree Mines Stock will be very heavily over-subscribed.

Closely following this initial stock offering, application for listing West Tree Mines stock upon the Standard Stock & Mining Exchange, of Toronto, and on the New York Curb will be made, and an active market at advancing prices may confidently be looked for. Special reports sent upon application.

A System of 16 Gold Bearing Veins

To further prove the West Tree Mines are well on the way toward the self-sustaining stage, as well as establishing this property as the furthest advanced and likely to become the Premier Mine of West Shining Tree, there are already proven over lengths from 250 to 1200 feet, 16 veins carrying high "pay" gold values over substantial widths from two to eight feet. Development work on these veins constitutes more than ten thousand feet of surface stripping, trenching and test pitting, as well as three shafts sunk to depths of 50 to 60 feet upon veins which show even more remarkable gold values at these depths than on the surface.

So far as underground and surface development has gone, each and every one of the 16 veins on the West Tree Mines has been proven for its continuity and permanency. For years the "Caswell" property has been eagerly sought after, but not until the owners were completely satisfied that the "mine" stage would be reached, was a public stock offering possible.

What a Leading Engineer Reports

"High-grade ore was being raised at the time of my visit to the Caswell (now West Tree), which showed coarse free gold. The vein on which the shaft was sunk could be traced from the river, up the hill and beyond. A particularly fine sample of free gold showing was in place at the upper south side of the shaft, and consisted of a ribbon of gold in quartz from two to three inches in width and about three feet of which was exposed. This showing was one of the finest spectacular samples I have ever seen outside of a museum display."

AT BOURKES MINES.

Cobalt, April 28.—Excavation for a new surface plant at the Anderson farm, Bourkes Mines, Limited, has been started by the company. The plant will include a twelve-drift compressor. Development work is being continued

AT MINAKER-KIRKLAND

Sinking at the Minaker-Kirkland, which property adjoins the Lake

"The West Tree is the Real Property of the Camp"

This statement was made last week by a leading American engineer after a thorough examination. Samples of ore taken from various sections of this property ran fabulously high and provide the basis for believing it will yet become a very large gold mine and a lucrative dividend-paying proposition.

The Caswell property, consisting of 182.6 acres, is now incorporated as the West Tree Mines, Limited, with an authorized capitalization of \$3,000,000, of which 1,000,000 shares, par value \$1.00, remain in the treasury. Over \$50,000 has already been spent in developing this property, and this work has proven gold values ranging as high as \$77,000 to the ton to exist at depth. Reliable assays of Caswell ore, showing no free gold, range from \$6.00 to \$490.00 to the ton, and the tonnage of this phenomenally high-grade ore already in sight places the West Tree Mines practically outside of the "prospect" class and well advanced toward the producing mine stage.

Stamp of Approval By Government Geologist

"The geological features of the West Shining Tree district resemble those of the Porcupine Gold Area. Gold is widely distributed in the quartz of the district. The occurrence of an apparently extensive body of quartz with visible gold in several places, and a general distribution of gold in the district, are encouraging features and indicate that the amount of systematic prospecting and development work that has been done so far is not proportionate to the possibilities of the area."

Orders for West Tree Mines Stock may be sent to any of the following brokerage Houses, who have carefully examined into the merits of this Company, and are completely satisfied of its unlimited possibilities as a profit-making speculative investment.

- ISELL, PLANT & CO.**
STANDARD BANK BUILDING.
Main 272.
- J. P. CANNON & CO.**
56 KING ST. WEST.
Adelaide 3342.
- J. T. EASTWOOD**
24 KING ST. WEST.
Main 3445.
- LORSCH & CO.**
56 KING ST. WEST.
Main 7417.
- TANNER, GATES & CO.**
DOMINION BANK BUILDING.
Adelaide 1366.
- ISELL, PLANT & CO.**
TRANSPORTATION BUILDING,
Montreal.

Contract for Sinking.
F. G. Carmichael and C. L. Campbell, who are operating the Foster property in Cobalt under lease, have secured a lease on a property at Bald Island, in Night Hawk Lake, and have let a contract to sink an incline shaft 50 feet. The shaft will follow a narrow vein which carries much visible gold.

RICH OF NEW Y

Samples F
Tree Att
tion

"Curb Goes
leading which
cial editor of
paper deemed
dense; the be
New York cu
ago and to ar
bull market o
that he was l
at that."

In the mid-
who filled the
in their ende
in the securi
gold on the
which was su
tract more o
these but
known in Can
making in
fields with son
cured in the
of northern O
Now, New
usually waste
ples of anyth
particular line
the curb,
extraordinary,
large part of
verlest novice
estimating the
sands of doll
Samp

And it may
were exceptio
camp that has
in gold. For
of these exhib
product had a
the centre of
quintessence
flowed as nev
and equit
It is saying
New Yorker
showings of v
fled by the se
stocks are g
ing in New Y
hibition of an
toughed a res
develop shortl
stantial. Cam
ways been in
metropolis, bu
Canadian gol
Shining Tree
representing o
coming distric
after on the N

RICH

More Than
Ore of
Develo

Since time
the most suc
used. Origin
sided in the g
primitive race
rareness and
the standard
a magnetic po
resist. Gold to
represent the
endeavor—the
labor—the sto
accumulates o
of toil.

Impelled by
precious metal
summer of 19
of northern O
of a narrow
so by the in
covered huge
and bus line
neighboring
with exceedin
bearing coase
That, brie
finding of w
Shining Tree
In the sa
brothers arriv
and the cas
Tree Mines, I
For the pa
richness of t
of mining op
his career is
shells interm
ing on the c
found some
gold, but loc
company and
carry on ex
work as it sh
Transportati
was one of t
Tree camp.
railway was
from the cas
bush and by
courage trav
necessity, and
that only the
induced the
wilderness. A

In 1912 Dul
by the extra
the Caswell
journey made
erty. In co
amusing stor
Shining Tree
While the
Caswell claim
very promisi
explosion blew
gold two feet
twelve to fir
richness of t
may be im
when melted
was sold for
people were
and desired
Sudbury. In
the property
been \$30,000,
two days,
to lose.
Impressed h
retarded hav
at the pier
the mining o
every other
Sudbury, fift
cash for a c
the guide,
whether the l
has never be
signed the op
dropped after
had been ma
The West
named. Has
probably the
Canada. The
etole and
property. T
The surface
was but a
chinks of a
away to b
stated that
Practice o

RICH ORE DAZZLES NEW YORK BROKERS

Samples From West Shining Tree Attract Eager Attention on "Curb."

"Curb Goes Wild Over Oils" is the heading which one imperturbable financial editor of a well-known New York paper deemed sufficiently expressive to denote the boom which is being created on the New York curb on the West Shining Tree ore.

In the midst of the frantic gyrations of the wild-eyed, jostling, shouting crew who filled the air with awe-inspiring din in their endeavors to make commitments in the securities company only bought and sold on the curb, a diversion occurred which was sufficiently impressive to attract more than passing attention even from these busy brokers.

Now, New York curb brokers don't usually waste much time examining samples of anything while a boom in any particular line of stocks is in progress on the curb, but these were exceptional.

And it may be stated here that samples were exceptional, even coming from a camp that has been noted for its richness in gold. For a few minutes the guard-rooms of these exhibits of Canadian gold mining product had a busy time.

It is saying too little to assert that the New Yorkers were impressed with the showings of West Shining Tree, as testified by the said samples. Gold and gold stocks are gaining an impressive following in New York nowadays, and the exhibition of such spectacular specimens touched a responsive chord, which may develop shortly into something more substantial.

RICH VEINS OPENED ON WEST SHINING TREE PROPERTY

More Than Twenty-Five Veins Have Been Located, and Ore of Strikingly High Grade Has Been Disclosed--Development to Be Pressed.

Since time immemorial gold has been the most sought for metal by the human race. Originally the ornamental qualities of the gold made it attractive to the primitive races. Later on account of its rareness and ease in handling it became the standard of exchange and it wielded a magnetic power which few people can resist.

Impelled by the desire to find the precious metal, prospectors set out in the summer of 1911 thru the trackless forests of northern Ontario, and while canoeing thru a narrow of Wasapika lake, near the mouth of the Indian River, these pioneers discovered huge boulders of white quartz, and upon further investigation found the neighboring district to be honeycombed with exceedingly rich pockets of gold-bearing rock.

That, briefly, is the story of the finding of what now constitutes the West Shining Tree district.

In the same summer the Caswell brothers arrived in the district and located the claims now known as the West Tree Mines, Limited.

For the past eight years the property has been in the hands of several groups of mining operators, and the history of its career is a checked one. The Caswell wells intermittently started the prospecting on the claims they had staked, and found some wonderful showings of free gold, but lacked the resources to carry on exploration and development work as it should have been done.

Transportation, or rather lack of it, was one of the most detrimental factors in retarding the growth of the West Shining Tree camp. At that time the nearest railway was approximately ninety miles from the camp, and the trail thru the bush and by water was not one to encourage travelling. Indian guides were a necessity, and in short, it might be said that only the lure of gold could ever have induced the white man to penetrate this wilderness.

A Battle of Wits. In 1912 Duluth interests were attracted by the extraordinary gold showings on the Caswell claims, and after an arduous journey made an inspection of the property. In connection with this event, an amusing story is told by old timers of West Shining Tree which will bear repeating.

While the Duluth people were on the Caswell claims, a shot was put in on a very promising vein on the surface. The explosion blew out a slab of almost solid gold two feet in length and running from twelve to fifteen inches in width. The richness of this chunk of gold quartz may be imagined when it is said that when melted down the gold content was sold for \$2200. Naturally the Duluth people were impressed by this showing and desired to set out immediately for West Shining Tree in order to sign an option on the property. The price is said to have been \$20,000.

In two days' time there was no time to lose. The Caswell wells were even more regretted having given them an option. The mining agreement one of the Caswell brothers offered the Indian guide who was to conduct the party out to West Shining Tree, fifty dollars to look them in the bush for a couple of days. But whether the guide was an honest Indian or whether the Duluth crowd raised the amount has never been discovered. The upshot of it was that the party arrived safely in West Shining Tree within the time limit and signed the option. Later the option was dropped after the first payment of \$5,000 had been made.

The West Tree property, as it is now known, has the unique record of being probably the most "high grade" mine in Canada. That is, more gold ore has been mined and taken away than any other property. This is due to the fact that the surface showings have been marvellous in richness in the yellow metal and it was but a simple matter to gouge out chunks of the best rock and carry it away to be sold. It is authoritatively stated that prospectors at one time made a practice of camping on the Caswell

CHURCHILL SHOWS VEINS OF PROMISE

Choice Mining Ground Adjoins the Wasapika and Herrick Properties.

The Churchill Mining and Milling Co. owns altogether 236 acres of choice mining ground adjoining the Wasapika gold on the east and the Herrick gold on the north. The company had originally only two claims of 84 acres, but the recultivation of the land in the district during the present year has led to a great enlargement in its scheme of operations.

The original 84 acres belonging to the Churchill have been surveyed, the assessment work is complete, and they are now under lease from the crown.

A shaft is now down 37 feet, and the result is highly satisfactory. More than a dozen veins have been uncovered, and several test pits have been sunk and there are several exposures of visible gold.

Visible Gold. Since Mr. Rogers' examination, a considerable amount of work has been done and a number of other veins and much visible gold have been uncovered. Samples taken by C. Walker, of Buffalo, gave \$388, \$88 and \$68 respectively. J. R. Brady, of Buffalo, obtained \$637.80 from another.

By the recent purchase the company has obtained an unusually large frontage on Wasapika Lake.

The property is well wooded and there is an excellent spring of water. Capital has been arranged for the development of this promising ground, and the outlook for the future of the company is very bright.

ATLAS ONE OF GREATEST PROPERTIES IN DISTRICT

Veins Are Very Well Defined and Ore Values As Shown By Assays Are Spectacularly Rich, While Milling Costs Will Be Low.

The Atlas Gold Mines were discovered by L. Jefferson on the 19th of August, 1911. On the 11th of July, preceding, a big fire at Porcupine involved a loss of 71 lives and \$1,000,000 in property. But it was Cobalt's banner year, in which 31,507,731 ounces of silver were produced—the biggest output in its entire history.

Shining Tree could not, and did not, advance as it deserved. But its day is now coming. Labor is obtainable and supplies are cheapening, while automobiles and trucks move freight and passengers over the 21 miles from the railway to the mines in a few hours.

Claim 2504 is very rich. This statement would bear much greater emphasis. In point of values in its ore there is only one property in Ontario showing more gold. The Croesus, in Munro, has yielded a ton of ore worth \$40,000. The Atlas is a very close second, and in point of quantity it has fifteen pay table veins for only one vein on that short ore shoot, on the Croesus.

The report issued by the geological survey branch of the department of mines, Ottawa (sessional paper No. 26, pp. 247, 249), says that "other veins will be discovered during the exploration of those now known."

The veins on the Atlas do not average over three feet in width; but they are very well defined, and as a rule they lie in the centre of an equally well defined zone of shearing and mineralization. This zone varies in width, but it may be safely put at three feet on each side of the veins proper. It also carries gold, which is distinctly stated, not only by the department of mines, Ottawa, but also by the Ontario Bureau of Mines. This means an average width of nine feet for these rich ore bodies, and the shear zones, combined with the clear-cut quartz veins, signify strength and promise in the most practical working depths.

Official authority attributes the gold deposits at Shining Tree to eruptions of granite and syenite during the Algonquin period, and the static heat of the earth was then very great. The crust was then soft and plastic, and these conditions mean deep-seated ore bodies, with a tendency to improvement in depth.

What Veins Show. Only four of the veins on the Atlas have been tested. The average of 13 assays, after discarding all visible gold, and \$159.40 from four assays taken over a width of four feet, without prior elimination of metallics. Another assay by the Milton, Hershey Co., Montreal, gave \$112.

Vein 7X is nine feet wide, with lateral shear zones 30 feet wide, sampling in several places showing values of \$10.11 per ton. Thirty-six samples from Vein No. 6 averaged \$12.20 per ton.

The Evelyn vein contains from six to thirteen inches of quartz, with one foot of shearing on each side. It has been uncovered for 600 feet, and will run of 1500 pounds made by Campbell & Deyell of Cobalt gave \$80.56 per ton after every effort had been made to remove the high-grade ore.

No. 1 vein has an average width of four feet. Four assays gave \$24.00 and one assay by the Milton Hershey Co., Montreal, showed \$78 per ton.

It is repeated that the Atlas is exceptionally rich. Official disinterested and competent authority also established the fact that the ore bodies are beyond the usual size as they include the lateral shear zones.

Costs Are Low. The Lake Shore at Kirkland lake is crushing 60 tons of \$25 ore per day on which the profit is \$90. This allows \$10 per ton for the abandoned figure, because the ore is very hard and tough, hard to break in the mine, hard to crush in the mill, and the cost of transport to the Atlas. The shear zones are highly charged with fine sulphides and are very friable and the quartz is normal. Costs should not exceed \$5 per ton. Sixty tons of \$80 ore would, therefore, give a daily net return of \$4800.

Here attention is called to the fact that Shining Tree is the southern extension of Porcupine, with some variations in lithology of granite on the south and east, and bosses of syenite dotted thru the field around the present mine at Shining Tree. The leading characteristics of Porcupine in its many veins and vein systems. The very favorable feature is repeated at Shining Tree, W. H. Collins, the eminent geologist, who prepared the government report already mentioned (sessional paper No. 26), was right when he said that other veins would be discovered during the exploration of those now known.

An examination of the network of veins at the West Shining Tree, Ontario, Canada, will convince anyone of the remarkable richness of the property. The veins are all along the strike of the Algonquin granite and the gold-bearing schists that has occurred what geologists call propylitization—the original lava has become a soft sericite schist, and it welcomes gold, to its bosom and holds it with an enduring grip.

Shining Tree will soon become second in importance to Porcupine. In several features it improves on the older camp. It has more varieties of rock. Its surface has been more broken and fractured and its vein form influences and the disposition of gold have been greatly facilitated. All it wants is development and the crust was then soft and plastic, and will soon make a decided impression on the rate of exchange between Canada and the United States.

The Atlas gold is one of the big properties of this great camp. With a recent haul of 22 tons of gold, the Atlas alone are very tangible assets, while its original showing is equal to the best in this remarkably rich region.

What Veins Show. Only four of the veins on the Atlas have been tested. The average of 13 assays, after discarding all visible gold, and \$159.40 from four assays taken over a width of four feet, without prior elimination of metallics. Another assay by the Milton, Hershey Co., Montreal, gave \$112.

Vein 7X is nine feet wide, with lateral shear zones 30 feet wide, sampling in several places showing values of \$10.11 per ton. Thirty-six samples from Vein No. 6 averaged \$12.20 per ton.

The Evelyn vein contains from six to thirteen inches of quartz, with one foot of shearing on each side. It has been uncovered for 600 feet, and will run of 1500 pounds made by Campbell & Deyell of Cobalt gave \$80.56 per ton after every effort had been made to remove the high-grade ore.

No. 1 vein has an average width of four feet. Four assays gave \$24.00 and one assay by the Milton Hershey Co., Montreal, showed \$78 per ton.

It is repeated that the Atlas is exceptionally rich. Official disinterested and competent authority also established the fact that the ore bodies are beyond the usual size as they include the lateral shear zones.

Costs Are Low. The Lake Shore at Kirkland lake is crushing 60 tons of \$25 ore per day on which the profit is \$90. This allows \$10 per ton for the abandoned figure, because the ore is very hard and tough, hard to break in the mine, hard to crush in the mill, and the cost of transport to the Atlas. The shear zones are highly charged with fine sulphides and are very friable and the quartz is normal. Costs should not exceed \$5 per ton. Sixty tons of \$80 ore would, therefore, give a daily net return of \$4800.

Here attention is called to the fact that Shining Tree is the southern extension of Porcupine, with some variations in lithology of granite on the south and east, and bosses of syenite dotted thru the field around the present mine at Shining Tree. The leading characteristics of Porcupine in its many veins and vein systems. The very favorable feature is repeated at Shining Tree, W. H. Collins, the eminent geologist, who prepared the government report already mentioned (sessional paper No. 26), was right when he said that other veins would be discovered during the exploration of those now known.

An examination of the network of veins at the West Shining Tree, Ontario, Canada, will convince anyone of the remarkable richness of the property. The veins are all along the strike of the Algonquin granite and the gold-bearing schists that has occurred what geologists call propylitization—the original lava has become a soft sericite schist, and it welcomes gold, to its bosom and holds it with an enduring grip.

Shining Tree will soon become second in importance to Porcupine. In several features it improves on the older camp. It has more varieties of rock. Its surface has been more broken and fractured and its vein form influences and the disposition of gold have been greatly facilitated. All it wants is development and the crust was then soft and plastic, and will soon make a decided impression on the rate of exchange between Canada and the United States.

The Atlas gold is one of the big properties of this great camp. With a recent haul of 22 tons of gold, the Atlas alone are very tangible assets, while its original showing is equal to the best in this remarkably rich region.

What Veins Show. Only four of the veins on the Atlas have been tested. The average of 13 assays, after discarding all visible gold, and \$159.40 from four assays taken over a width of four feet, without prior elimination of metallics. Another assay by the Milton, Hershey Co., Montreal, gave \$112.

Vein 7X is nine feet wide, with lateral shear zones 30 feet wide, sampling in several places showing values of \$10.11 per ton. Thirty-six samples from Vein No. 6 averaged \$12.20 per ton.

The Evelyn vein contains from six to thirteen inches of quartz, with one foot of shearing on each side. It has been uncovered for 600 feet, and will run of 1500 pounds made by Campbell & Deyell of Cobalt gave \$80.56 per ton after every effort had been made to remove the high-grade ore.

No. 1 vein has an average width of four feet. Four assays gave \$24.00 and one assay by the Milton Hershey Co., Montreal, showed \$78 per ton.

It is repeated that the Atlas is exceptionally rich. Official disinterested and competent authority also established the fact that the ore bodies are beyond the usual size as they include the lateral shear zones.

Costs Are Low. The Lake Shore at Kirkland lake is crushing 60 tons of \$25 ore per day on which the profit is \$90. This allows \$10 per ton for the abandoned figure, because the ore is very hard and tough, hard to break in the mine, hard to crush in the mill, and the cost of transport to the Atlas. The shear zones are highly charged with fine sulphides and are very friable and the quartz is normal. Costs should not exceed \$5 per ton. Sixty tons of \$80 ore would, therefore, give a daily net return of \$4800.

Here attention is called to the fact that Shining Tree is the southern extension of Porcupine, with some variations in lithology of granite on the south and east, and bosses of syenite dotted thru the field around the present mine at Shining Tree. The leading characteristics of Porcupine in its many veins and vein systems. The very favorable feature is repeated at Shining Tree, W. H. Collins, the eminent geologist, who prepared the government report already mentioned (sessional paper No. 26), was right when he said that other veins would be discovered during the exploration of those now known.

An examination of the network of veins at the West Shining Tree, Ontario, Canada, will convince anyone of the remarkable richness of the property. The veins are all along the strike of the Algonquin granite and the gold-bearing schists that has occurred what geologists call propylitization—the original lava has become a soft sericite schist, and it welcomes gold, to its bosom and holds it with an enduring grip.

Shining Tree will soon become second in importance to Porcupine. In several features it improves on the older camp. It has more varieties of rock. Its surface has been more broken and fractured and its vein form influences and the disposition of gold have been greatly facilitated. All it wants is development and the crust was then soft and plastic, and will soon make a decided impression on the rate of exchange between Canada and the United States.

The Atlas gold is one of the big properties of this great camp. With a recent haul of 22 tons of gold, the Atlas alone are very tangible assets, while its original showing is equal to the best in this remarkably rich region.

What Veins Show. Only four of the veins on the Atlas have been tested. The average of 13 assays, after discarding all visible gold, and \$159.40 from four assays taken over a width of four feet, without prior elimination of metallics. Another assay by the Milton, Hershey Co., Montreal, gave \$112.

Vein 7X is nine feet wide, with lateral shear zones 30 feet wide, sampling in several places showing values of \$10.11 per ton. Thirty-six samples from Vein No. 6 averaged \$12.20 per ton.

Northern Ontario's Richest Gold Prospect

Be a Satisfied Shareholder "ATLAS" Buy "Atlas" Now

The Premier Property of the Wonderfully Rich New Gold District of West Shining Tree

Assays from the "ATLAS" run as high as \$20,000.00 per ton. This is spectacular but not convincing.

But no intelligent investor, no matter how cautious or conservative, can disregard an actual 1500 lb. Mill Run, made by Campbell & Deyell of Cobalt, which, after removing all visible Gold, gave the extraordinary values of \$80.56 per ton. Experienced prospectors, conservative mining men, competent engineers and geologists of the highest standing are unanimous in their statements that the exceptionally favorable rock formation and the clean cut, well defined veins on the "ATLAS" give every possible indication that the large ore bodies will carry to great depths.

Carefully consider the above and you cannot fail to realize that at 25c PER SHARE "ATLAS" is positively the most promising speculative investment opportunity in the mining world today.

Prospectus and full particulars from

J. P. CANNON & CO.

Members Standard Stock Exchange 56 King St. West Toronto, Ontario Phone Adelaide 3342-3343

MINERALIZED ZONE HAS GOLD THROUGHOUT

Federal Department of Mines so Reports on Atlas and Wasapika Properties.

A shear zone is a belt of fractured and mineralized rock in which bodies of auriferous quartz are often found. It was originally a figure of fault plane, but has since been enlarged by pressure and movement. For the most part it carries bodies of clear quartz, and quartz is nearly always disseminated thru the mass.

At Porcupine and West Shining Tree these zones of shearing and silicification take the place of the igneous bodies. The ore bodies are always found in such zones, and sometimes there are no distinct aggregations of quartz, the gold being deposited thruout the whole of the altered and broken rock.

Often only the more silicious portion of the zone is payable. At West Shining Tree, however, the department of mines, Ottawa, has reported that the whole mineralized zone on the Atlas and Wasapika mines can be worked. This is a very important discovery when widths in places run up to 100 feet.

On these properties there is contact between andesitic basalt and rhyolite, a very favorable condition for the development of a strong mineralized zone. The department of mines also reports that the basement igneous complex in the Porcupine and West Shining Tree, still there are not a few variations, but the Algonquin granite was the main source of the gold in both camps.

Andesite is the rock of which the Andes are composed. It has not been identified at Porcupine, but it has wide extension at West Shining Tree. It is the only strikingly auriferous lava flow known in northern Ontario.

GOLD COINS IN INDIA VANISH AS BY MAGIC

Natives Hoard Mohurs—Specially Issued to Finance Crops in Punjab.

Samuel Montagu & Co., bullion brokers, of London, in their latest market letter to hand say: "The yearling lord or writer of The Capital of Calcutta thus comments in its issue of the 21st ultimo: 'The Indian situation of affairs, recently minted with the express object of financing the crops in the Punjab, is a very serious one. The special precautions taken by the government to start again at treating old coins for the chief purpose for which it had been struck, and so thereby has it been safeguarded, that it has so far as authoritatively informed, practically disappeared from circulation, and is not in circulation even in the province for which it was specially designed. There are, we learn, two specimens in existence in Calcutta. There may perhaps be a few specimens elsewhere, but practically the entire issue has been absorbed, and the gold mohur of 1918 is, for all practical purposes, as extinct as a certain fabled bird.'"

"GILT-EDGE" STOCKS MAY BE DECEPTIVE

Story of Spokane Widow's Mite and Cautious Bankers Is Instructive.

The following interesting editorial appeared in a recent issue of The Northwest Mining Truth, published in Spokane:

It is well for this community that it has had a self-constituted committee of financial guardians, ever alert to the cry of the widow and orphan for protection from the ravening assaults of the unscrupulous promoter of mines and other dangerous projects. But for them there might have been no Inland Empire Railway Company or Trustee Company to save the widow and orphan from an effectually and everlasting as it had been thrown down the bottomless pit.

We know of a case that will point our moral. Many years ago, about eight we believe, a popular chief of police was foully murdered in this city. He left a widow and child in dire distress. A generous public subscribed the sum of \$10,000 for their relief and the amount was handed over to local bankers for investment. The aforesaid bankers met solemnly and canvassed the situation pro and con. Mining stocks were taboo, as they should have been, but the widow's funds were finally invested in Trustee units, in which if our information is correct, one of the bankers was more than slightly interested. Last year the widow received the miffing sum of \$10,000. This is his business and the security, and has now been compelled to hire out at a day's pay to keep the wolf from her door.

Bankers Not Infallible. That is an old story, of course, but nevertheless it proves that bankers are not infallible. In this case the widow would have been far better off had she had her funds to some honest mining broker and told him to do with it as best he could. That broker might have invested in Hecla, for instance, at 25 cents a share and sold the widow out at a profit of thirty-six hundred per cent, after she had been picking up several hundred per cent, to keep the wolf from the door meanwhile. Even if he had not been so lucky in his choice, he would be compelled to "go some" to garner as bad a lesson as these bankers, with all their safety and security, picked from the tree of infallibility for the poor woman.

All of which reminds us that the banker, but human, is not infallible. The funds upon which he fastens into the channels from which he may expect the greatest profit. This is his business and he will doubtless pursue it with the same Pecksniffian hypocrisy as in the past. But we should like to hear the tale of the mining business which, as a matter of fact, has but a Spokane, several times saved from the sheriff, and will long continue to bring it prosperity if only these self-seeking "guardians" are safeguarded, that it has so far as authoritatively informed, practically disappeared from circulation, and is not in circulation even in the province for which it was specially designed. There are, we learn, two specimens in existence in Calcutta. There may perhaps be a few specimens elsewhere, but practically the entire issue has been absorbed, and the gold mohur of 1918 is, for all practical purposes, as extinct as a certain fabled bird."

Regarding reports that a discovery has been made on the Silver Leaf property, The Crown Reserve management, stated to The Northwest Mining Truth that the diamond drilling program to explore for ore has been completed without anything being found.

WEST SHINING TREE

Noted For Its Sensational Gold Discoveries

No Gold Camp in Canada has such widespread showings of high-grade gold ore.

Veins of fabulous value have been opened on a number of properties throughout the district.

Spectacular showings are the rule and not the exception in WEST SHINING TREE.

On this account the district is attracting international attention and is literally in the first stages of a boom.

Legitimate development is being carried on at half a dozen properties where a few months ago little or no work was being done.

The time is now ripe for profitable speculation in the stocks of WEST SHINING TREE companies.

We particularly invite inquiries regarding Churchill Mining Co. which owns the properties adjacent to Wasapika on the west.

J. T. EASTWOOD & CO. Members Standard Stock Exchange 24 King St. W., Toronto - Phone M. 3445-3446

MINING NOTES

Since reaching the 300-foot level, the latter part of last year, over a thousand feet of crosscutting and drifting has been done by the Trethewey Company of Cobalt, on the Caswell, Grosvenor.

Five veins have been opened underground that carry silver values. Drifting on one of these encountered a good shoot of milling rock.

As there is much faulting, and in order to gain further geological information, a winze is being sunk from the 300-foot level on the vein, in which some high grade ore was found. The winze is now about 19 feet below the level, and the silver content of the vein has shown a tendency to improve.

Four drills are working. Just before Porcupine town closed down some months ago, a cave-in occurred underground. It was decided to remedy this before starting milling operations again, and in the meantime to make some minor changes in the mill.

Excellent progress is being made underground, and the mine is rapidly being put in good shape for regular milling operations. The changes in the mill are being made.

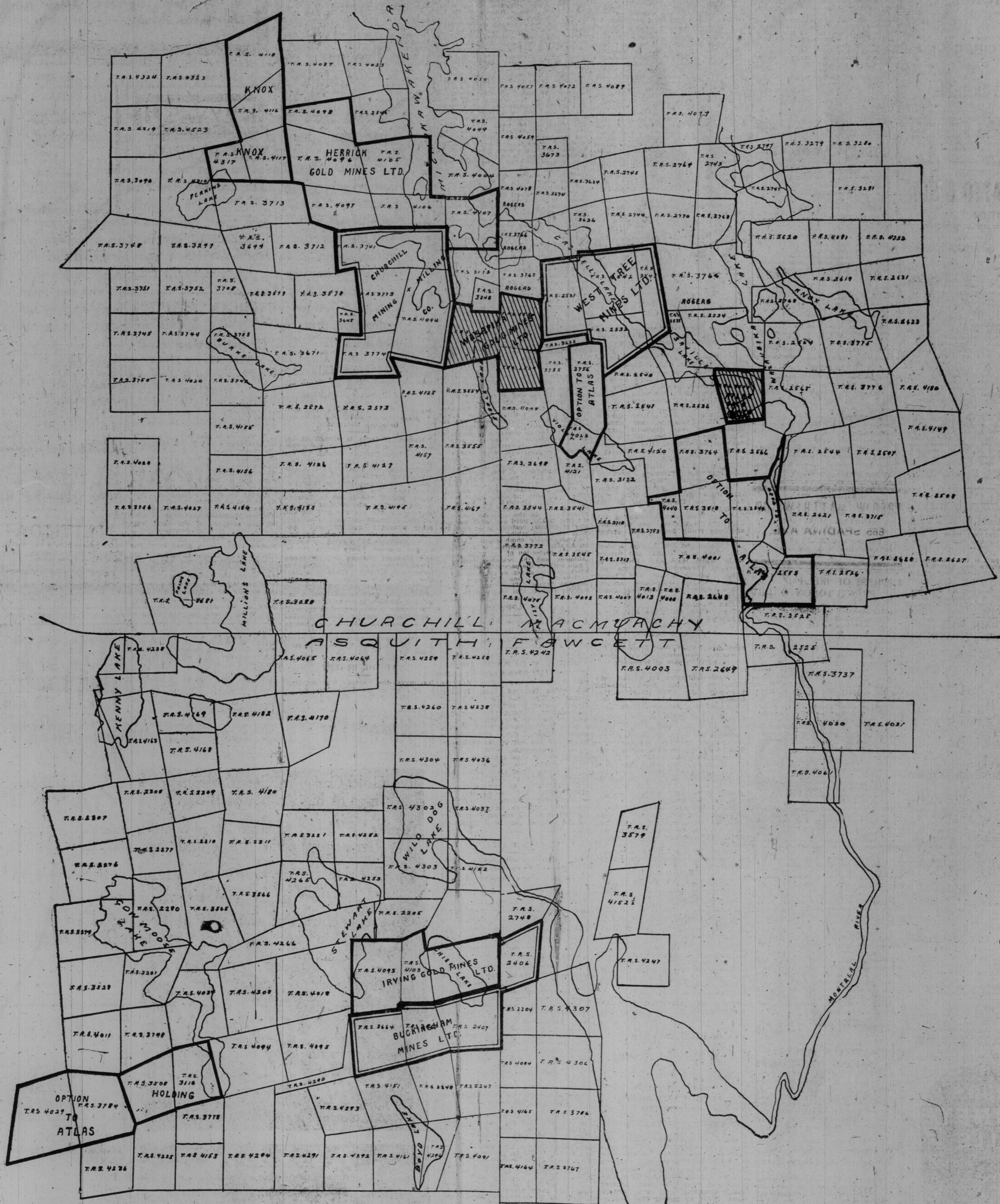
It is expected that everything will be in shape at the Contagas this week to start again at treating old sands. A conveyor has been installed, and all necessary regrounding and flotation equipment is ready.

The initial tonnage will be about 125 tons a day. As over two hundred tons of mine ore are being treated daily, the total tonnage treated will be well above 300 tons a day.

A few days ago the Dome Mines started a 25-drill compressor, bringing the total to 30 drills.

...L. Camp...the Poster...leave, have...ity at Bald...ike, and have...incline shaft...blow a far...much visible

MAP OF ONTARIO'S NEW GOLD FIELD, WEST SHINING TREE, SHOWING WORKING PROPERTIES



TU
JOHN
 Announ
Scotti
Famil
 For Lad
 now so
 Watch
 Lead, C
 Entosh,
 Graham,
 family n
Heavy
 For met
 all acc
 equipm
 A Big Rang
Tarta
 is shown
 ily name
Viyell
 Are guar
 unsubs
 files. S
 and fan
 able sha
 and des
 gents' de
 Samples
 Mail Order
JOHN
RURAL
 Provincial
 G.W.V.A., fo
 stirring add
 last night
 ter what M
 sociation M
 Calvert rom
 ment to gra
 ranging fro
 branches we
 a man. Ind
 the central
 the propos
 tically adop
 recommend
 thozed the
 sort of polit
 political pa
 opinion that
 a political
 pence of
 who became
 would be c
 up, and that
 about from
 swing all m
 sired lines,
 diors govern
 of the supp
 turned men,
 the argum
 accord with
 will, therefo
 tion at the
 tion
SCAR
 A large me
 St. Nicholas
 pices of the
 W. V. A. I
 energetic ca
 do-raise fun
 clubhouses i
 situated in
 in the south
 A large c
 conduct the
 township.
 same time a
 Thos. H. B
 dent of the
 lacombe, wh
 for business
BUILDING
 It was de
 the league
 hind the pa
 strike again
 means that
 fuse to acc
 industrial co
 with the m
 arranged in
 will go out
 ers. Centra
 ing held in
 decided to r
 dred return
 strike.
BRITAIN
F
 London, J
 fod of perf
 the worst
 over the B
 erting the
 six inches
 telephone l
 communica
 regions fro
 tion with
 In this cit
 of the st
 put out of
 Spring co
 ferred from
 show that
 wrecked.
BRITISH
S
 Brussels,
 dug Hugh
 Twenty-tw
 and ten re
 The Hug
 for clearing
 T
 Woodstoc
 A-her, of
 Drumto 10
 lon on a ch
 property of
 Gireoll.
K
 WALL
 BR
 HIR

JOHN CATTO & SON

Announce a grand and special Display of Scottish Clan and Family Tartans

For Ladies' Pleated and Killed Skirts now so much in vogue, in the Black Watch, Campbell, MacKenzie, McLeod, Cameron, Finlayson, Mcintosh, Macdonald, Robertson, Gordon, Graham, Stewart and other clan and family names; also in

Heavy Kilting For men and youths' kilts, including all accessories for the complete equipment of the Highland Dress.

A Big Range of Ladies' Tartan Silk Sashes is shown in all popular clan and family names of interest to the Scot.

Viyella Flannels Are guaranteed unshrinkable and are unsurpassed for their durable quality.

JOHN CATTO & SON TORONTO

RURAL G. W. V. A. OPPOSES GRANT

Provincial Secretary W. E. Turley, G.W.V.A., for Ontario, in the course of a firing address before Central G.W.V.A. last night made it clear that no matter what the Toronto branches of the association might decide to do with the Calgary resolution to urge the government to grant returned men gratuities ranging from \$2000 to \$1000, the rural branches were opposed to it almost to a man.

SCARBORO ENERGETIC. A large meeting was held last night in St. Nicholas' church for the purpose of discussing the energetic campaign next spring to raise funds for the building of two clubhouses in the township.

BUILDING TRADE WILL BACK UP PAINTERS

It was decided last night at a meeting of the Building Trades League that the league would stand four-square behind the painters and decorators in their strike against the master painters.

BRITAIN SUFFERS FROM SEVERE STORM

London, April 28.—Following a period of perfect spring weather, one of the worst storms in some time raged over the British Isles last night, covering the country with from four to six inches of snow.

BRITISH NAVAL TUG SUNK OFF NIEUPORT

Brussels, April 28.—The British naval tug Huguette sank off Nieuport today. Twenty-two of the crew were drowned and ten rescued.

THEFT OF MOTOR Woodstock, Ont., April 28.—Russell Askert, of Ingersoll, was arrested at Drumbo today by High Constable Hillon on a charge of stealing an automobile property of Miss Annie Morrow, of Ingersoll.

THE WEATHER

Meteorological Office, Toronto, April 28. (8 p.m.)—Showers have occurred today in Ontario and western Quebec, while in other parts of the Dominion the weather has been fair, but has been quite mild in the western provinces.

Minimum and maximum temperatures: Prince Rupert, 48; Victoria, 46, 54; Vancouver, 48, 60; Kamloops, 50, 72; Detlorford, 54, 70; Moose Jaw, 45, 80; Winnipeg, 28, 69; Fort Arthur, 30, 46; Fanny Bay, 38, 46; London, 41, 50; Toronto, 42, 48; Kingston, 42, 46; Ottawa, 38, 42; Montreal, 42, 54; Quebec, 31, 56; St. John, 24, 50; Halifax, 30, 56.

THE BAROMETER. Time: Ther. Bar. Wind. 4 a.m. 48 29.58 2 S.W. 10 a.m. 48 29.58 7 N.E. 4 p.m. 46 29.65 13 N.W. 8 p.m. 46 29.65 13 N.W.

STREET CAR DELAYS Monday, April 28, 1919. King cars, eastbound, delayed 6 minutes at 9.52 a.m. at Don bridge, by wagon stuck on track.

RATES FOR NOTICES Notices of Births, Marriages and Deaths, not over 50 words, \$1.00. Additional words, each 5c. No Lodge Notices to be included in Funeral Announcements.

DEATHS. ARMSTRONG—On Monday, April 28, at the residence of her son-in-law, Alfred E. Canham, 546 Meriton street, Catherine T. MacCallum, widow of the late Jas. Armstrong.

FRED W. MATTHEWS CO. FUNERAL DIRECTORS. 665 SPADINA AVE. TELEPHONE COLLEGE 791.

EMPRESS OF IRELAND BRINGS TORONTO UNIT The 1st Machine Gun Battalion is included in 3000 Soldiers Aboard Metagama On Way

Ottawa, April 28.—With a total of 2855 soldiers on board, of whom 1851 are for Winnipeg and 1004 for Toronto, the Empress of Ireland is on her way across the Atlantic, and will likely dock at Quebec on May 6.

AT THE GAYETY. Stars of Burlesque including "The Brick Top" Entertainer, Make "Follies of the Day" a Howling Success.

MR. LEACOCK AND MARK TWAIN Four years ago Mr. Stephen Leacock amused an overflowed audience in Toronto and next Friday evening, in Convocation Hall, he will again give one of his characteristic humorous lectures.

FREEMANTLE WHARVES BARRED TO STEAMERS Perth, Australia, April 28.—Owing to the protracted trouble at the wharves of Freemantle, the Commonwealth government has intimated that no steamers will call there until the loyal lumper who worked during the big strike receive proper attention.

Eight Hundred Striking Carters in Montreal Want Better Terms Montreal, April 28.—Eight hundred carters refused to accept the terms offered by the employers on Saturday and which were accepted by over three thousand freight handlers.

PLAYS, PICTURES AND MUSIC

"FIDDLERS THREE." Attractive Music, Graceful Dancing, and a Play Full of Originality, Draw Crowds to Princess.

"Fiddlers Three," an operetta at the Princess this week, is to be noted chiefly for its originality of plot and a striking way of carrying it out. The accessories in the shape of scenery and costumes are both appropriate and beautiful, and the cast includes some characters who carry out their parts with a certain amount of turgidness.

AT SHEA'S. Beautiful Madame Petrova Charms Audience With Song and Drama—"Petticoats" Dainty Comedy.

As Madame Olga Petrova swept on to the stage at Shea's Theatre on Monday night the spotlight fell upon her, she resembled nothing so much as a gorgeous peacock.

AT LOEW'S. A Tasty Chorus in "Just a Girl," Good Principals, Good Vaudeville, and the "Road Thru the Dark."

AT THE HIPP. First-Class Vaudeville and a Fight in Person Film, Featuring Bill Farrum, Make Excellent Bill.

BIG FILM AT MADISON. The photoplay that is showing at the Madison Theatre for the first half of this week is of very unusual interest. It is "The Callaux Case," and it is really the story of that infamous incident of the treachery of the Callaux and Bolo Pasha.

Cascarets Work While You Sleep No headache, biliousness, upset stomach or constipation tomorrow

Spent 10 cents—feel grand! Tonight take Cascarets to liven your liver and clean your bowels. Stop the headaches, bilious spells, sourness, gases, coated tongue, bad breath, gas, looseness and constipation—Take Cascarets and enjoy the nicest, gentlest "inside cleansing" you ever experienced.

"CHU CHIN CHOW." At the Alexandra Can Be Seen a Dream of the Orient Unsurpassed on Any Stage at Any Period.

In that marvelous region east of Suez "where there ain't no top commandments, and a man can raise a chair" is laid the scene of the spectacle that changed the Royal Alexandra last night into a magic palace. All that has been told of "Chu Chin Chow" could never convey a fraction of the beauty of color, the magnificence of scenery, and the riotous splendor of movement which fill the stage from 8 o'clock till 11.30.

AT LOEW'S. A Tasty Chorus in "Just a Girl," Good Principals, Good Vaudeville, and the "Road Thru the Dark."

AT THE HIPP. First-Class Vaudeville and a Fight in Person Film, Featuring Bill Farrum, Make Excellent Bill.

BIG FILM AT MADISON. The photoplay that is showing at the Madison Theatre for the first half of this week is of very unusual interest. It is "The Callaux Case," and it is really the story of that infamous incident of the treachery of the Callaux and Bolo Pasha.

Cascarets Work While You Sleep No headache, biliousness, upset stomach or constipation tomorrow

Spent 10 cents—feel grand! Tonight take Cascarets to liven your liver and clean your bowels. Stop the headaches, bilious spells, sourness, gases, coated tongue, bad breath, gas, looseness and constipation—Take Cascarets and enjoy the nicest, gentlest "inside cleansing" you ever experienced.

Spent 10 cents—feel grand! Tonight take Cascarets to liven your liver and clean your bowels. Stop the headaches, bilious spells, sourness, gases, coated tongue, bad breath, gas, looseness and constipation—Take Cascarets and enjoy the nicest, gentlest "inside cleansing" you ever experienced.

BARRY McCORMACK PLEASES. Young Irish Actor Makes Big Hit at Grand in "Strangest Racing Drama."

Rida Johnson Young, one of the younger successful playwrights, whose work in "Maxime" has shown unusual skill and originality, is the author of "Macushla," in which Barry McCormack is playing this week at the Grand Opera House.

AT LOEW'S. A Tasty Chorus in "Just a Girl," Good Principals, Good Vaudeville, and the "Road Thru the Dark."

AT THE HIPP. First-Class Vaudeville and a Fight in Person Film, Featuring Bill Farrum, Make Excellent Bill.

BIG FILM AT MADISON. The photoplay that is showing at the Madison Theatre for the first half of this week is of very unusual interest. It is "The Callaux Case," and it is really the story of that infamous incident of the treachery of the Callaux and Bolo Pasha.

Cascarets Work While You Sleep No headache, biliousness, upset stomach or constipation tomorrow

Spent 10 cents—feel grand! Tonight take Cascarets to liven your liver and clean your bowels. Stop the headaches, bilious spells, sourness, gases, coated tongue, bad breath, gas, looseness and constipation—Take Cascarets and enjoy the nicest, gentlest "inside cleansing" you ever experienced.

Spent 10 cents—feel grand! Tonight take Cascarets to liven your liver and clean your bowels. Stop the headaches, bilious spells, sourness, gases, coated tongue, bad breath, gas, looseness and constipation—Take Cascarets and enjoy the nicest, gentlest "inside cleansing" you ever experienced.

THE STERLING BANK OF CANADA

SAVE, Because... A few hours of passing pleasure now may cost you days of misery later on.

STRAND TO-DAY MME: PETROVA The Panther Woman

MADISON BLOOR ST. "The Callaux Case" THE BIG PHOToplay SENSATION OF THE DAY

STEPHEN LEACOCK IN Convocation Hall FRIDAY, MAY 2, at 8.15 p.m. "A Talk on Frenzied Fiction"

HIPPODROME ALL WEEK WILLIAM FOX Presents WILLIAM FARNUM IN "FIGHTING BLOOD"

LOEW'S ALL WEEK—Prices 15c and 25c CLARA KIMBALL YOUNG THE ROAD THROUGH THE DARK

GAYETY TWICE TO-DAY FOLLIES OF THE DAY

STAR MAT DAILY BURLESQUE SPEEDWAY GIRLS AMATEUR—THURSDAY NEXT WEEK—"LID LIFTERS"

TOMORROW "CONCERT DE LUXE." Management - I. E. Suckling ALDA LAZZARI MARTINELLI DE LUCA Seats now selling at Massey Hall \$1-22.50.

DODD'S KIDNEY PILLS ALL KIDNEY DISEASES RHEUMATISM GOUT BRONCHITIS DIABETES THE PROPRIETOR

Freemantle Wharves Barred to Steamers Perth, Australia, April 28.—Owing to the protracted trouble at the wharves of Freemantle, the Commonwealth government has intimated that no steamers will call there until the loyal lumper who worked during the big strike receive proper attention.

Cascarets Work While You Sleep No headache, biliousness, upset stomach or constipation tomorrow

"Speedway Girls." At Star Features Stars of Burlesque Well Supported by a Cracking Good Chorus of Real Pretty Girls.

ALLEN THEATRE RICHMOND VICTORIA CONTINUOUS PERFORMANCE NOON DAILY 11:15

TOMORROW "CONCERT DE LUXE." Management - I. E. Suckling ALDA LAZZARI MARTINELLI DE LUCA Seats now selling at Massey Hall \$1-22.50.

The World's Selections BY CENTAUR.

—Havre de Grace—
FIRST RACE—Whitney entry, Oleas...
SECOND RACE—Rhomb, Gold Bond...
THIRD RACE—Vive McGee, Joe Joe...
FOURTH RACE—Thornbloom, Peasant...
FIFTH RACE—Vindex, Cudgel, Wat...
SIXTH RACE—Sylvano, Romeo, An...
SEVENTH RACE—Polroma, Zinnia, Lyle...
—Lexington—
FIRST RACE—Dr. Carmen, Walnut...
SECOND RACE—Ruby, Starview, Viola...
THIRD RACE—Lady Rachel, Binding...
FOURTH RACE—Regalo, Delico, Pass...
FIFTH RACE—Jack Scot, Basti, Sew...
SIXTH RACE—Lucky R., Eulogy...
SEVENTH RACE—Bonnie Tess, Sas...
Rookery.

TODAY'S ENTRIES

AT LEXINGTON.
Lexington, Ky., April 28.—Entries for Tuesday:
FIRST RACE—Purse \$700, claiming, four-year-olds and up, 6 furlongs:
Vindex...101 Ed. Garrison...104
Lacy...108 L. Fairplay...108
Orderly...106 Portlight...108
Squealer...108 Lady Ivan...110
Gibby...110 A. Middleton...110
Dr. Carmen...112 Walnut Hall...112
Also eligible:
Lady Lantry...101
SECOND RACE—Purse \$700, two-year-olds, fillies, 4 furlongs:
Spring Vale...112 Viola Park...112
Spring Signal...112 aRuby...112
Money Made...112 Starview...112
Clintonville...112 aMove On...112
Belching Alra...112
THIRD RACE—Purse \$800, three-year-olds, fillies, Futurity course, 1 mile:
Dolly...108
By Right...108 Zuleika...108
Dancing Sprm...112
Cover Up...112 Ketta B...112
Lady Rachel...112 Woodpile...112
Binding Tie...112
FOURTH RACE—\$2000 added, Ashland Oaks, three-year-olds, fillies, one mile:
War Tax...112
Betta B...117 Lillian Shaw...117
Delico...117 Regalo...117
Passing Shower...117 Baiter Sako...117
The Cullen Bon...117 Locotal...117
FIFTH RACE—Purse \$1000, Red Head Handicap, three-year-olds and up, 6 furlongs:
Major Parks...102 Precious...102
Basil...105 Sewell Combs...107
J. J. Murdoch...105 Jack Scott...115
SIXTH RACE—Purse \$800, three-year-olds and up, fillies and mares, one mile and 70 yards:
Miss Proctor...105 Eulogy...105
Sassa Namy...105 Lean Cochran...105
Paula Y...105 Locky B...115
Baby Lynch...110 Flapper...110
SEVENTH RACE—Purse \$800, claiming, three-year-olds and up, fillies and mares, one mile and 70 yards:
Nan...100 Marlon Adler...100
Miss Gonyea...105 Rockingham...110
Suzetta...105 Rookery...105
Bonnie Tess...110 Azalea...110
—Apprentice allowance claimed.
Weather clear, track fast.

AT HAVRE DE GRACE.

Havre de Grace, Md., April 28.—The racing for Tuesday are:
FIRST RACE—Two-year-olds, condition, 4 1/2 furlongs:
Uncle Tom...110 Amaze...115
Penely...107 Yellow Hand...110
Oleaster...112 Rockingham...110
Erico Caruso...115 Smart Guy...110
—Whitney entry.
SECOND RACE—Four-year-olds and up, steeplechase, selling, about two miles:
Otto Flo...110 Porin...110
Algar...110 Mackenzie...110
Garter...115 Gold Bond...115
Rhomb...115
THIRD RACE—Three-year-olds, claiming, 5 1/2 furlongs:
Challenge...115 Jack Healy...110
Joe Joe...115 Sea Sun...115
Torquato...115 Appleby II...115
Liberty Bond...110 Susan M...110
Dancing Girl...110 Verboten...115
John Cullinan...115 Melancholia...115
Hoboken...115 Superba...110
Lloyd George...115 Sol de Verdun...115
Also eligible:
Vive McGee...110 Coronado...115
Revolution...110 W. Ward...115
FOURTH RACE—Four-year-olds and up, claiming, six furlongs:
Thornbloom...110 Sea e Light...105
Tessan...105 Tit for Tat...105
American...105 Mackenzie...105
Softener...105 Sea Beach...105
Prince Henry...108 Celto...110
Cavan Boy...109 Ira Kay...105
Trophy...111 Napoli...105
Sir W. Johnson...108 Juanita III...100
Also eligible:
Foot...105 Little Boy...108
Laura Miller...105 Searamouch...108
FIFTH RACE—Three-year-olds and up, Cecil Handicap, one mile and seventy yards:
Cudgel...112 Vindex...119
War Machine...117
SIXTH RACE—Three-year-olds, claiming, one mile and seventy yards:
Jul...105 Houdini...109
Antoinette...103 Romeo...111
Catspraying...104 Ivy...111
Timbaku...106 Phurean...104
Sylvano...107
SEVENTH RACE—Four-year-olds and up, claiming, 1 1/16 miles:
Ciddle...104 Fairly...102
Polroma...111 Zinnia...100
Queen Blonde...108 Houdini...110
Soulis...106 Lucius...104
Lotte...110 Royat...109
Artist...108 Bill Humley...106
Amalgamator...106 Salvatelle...101
Mariano...107 Otisco...102
Also eligible:
Ed Baumann...108 Sleeth...107
Lady Ward...102 Thrift...101
—Apprentice allowance claimed.
Weather showery; track fast.

MONTREAL CURLERS HAD SUCCESSFUL SEASON.

Montreal, April 28.—Reports presented at the annual meeting of the Canadian branch of the Royal Caledonia Club, at the clubrooms of the Montreal Curling Club on Saturday night, showed that the past season had been the most successful ever enjoyed by the branch. The season was one of the shortest on record, starting on the first day of January and finishing on the 15th day of March, in all consisting of 74 days.
The financial statement showed a credit balance the first in several years. Forty-nine clubs are now made up with the branch, giving an individual membership of 236.
J. A. Watson of the Globe Club, Ottawa, was elected president.
Moose team of the Western City League will practice at Willowdale Park tomorrow at 6 p.m.
The Giants baseball team will play a practice game on Wednesday evening at Champlain Park at 6:30 o'clock. All players are requested to be on hand, and any other will be made welcome. A meeting will be held immediately after the game.
Officers of Lake Shore Senior League will practice this evening at Willowdale Park at 6:45.

Canadian Y.M.C.A. Finances

What Your Money Did Last Year
What Y.M.C.A. Plans to do This Year

ON May 5th throughout Canada, the National Council of the Young Men's Christian Associations inaugurates a Red Triangle Campaign to raise \$1,100,000. Before asking for renewed endorsement, it is desired to render full account of the funds subscribed in response to the appeal of one year ago, and to thank the public most sincerely for the generosity that made possible the Y.M.C.A.'s work for the soldiers throughout the war.
The Consolidated Financial Statement of the Y.M.C.A. for 1918 has been duly audited and found correct by Price, Waterhouse & Company,

of London, England, and Oscar Hudson & Company, Toronto. A full copy of this statement may be obtained at any local Y.M.C.A. building, Red Triangle Club or Red Triangle Campaign Headquarters in Canada.

We present herewith a complete summary of our finances for 1918, covering our entire service in France, England, Scotland, Belgium, Germany, Holland, Northern Russia, Siberia and Canada, where the Association served, and is still serving, Canadian men and boys. We also outline our 1919 Budget.

Y.M.C.A. Receipts During 1918.
Balance on hand, January 1, 1918 \$ 415,847.87
Refund from Overseas 240,382.74
(For goods in transit as at Dec. 31, 1917)
Public Subscriptions, 1918 3,112,242.10
Gross Canteen Sales 6,181,583.45
Room Rents and other Revenues Overseas 52,985.89
(Beaver Hut, London, Y.M.C.A. Hotel, Paris)
Overseas Contributions, Interest & Exchange 43,473.27
Room Rents to Soldiers in Canada and all other revenues 20,877.14
Total Receipts \$10,067,143.46

Disbursements:

The scope and variety of the entire service in so far as expenditures can reveal them are indicated in the items which follow:

- 1.—Cost of Goods Sold in Canteens— \$5,076,098.36
2.—War Service Overseas - \$2,843,935.46
Huts, tents, marquees, canteens' up-keep and equipment, rents, lighting and heating, \$628,177.92
Free distribution athletic supplies and prizes, \$233,793.44
Khaki University for Soldier Students, \$500,000.00
Other educational work overseas, \$6,141.82
Transportation, transport, equipment and running expenses, \$117,096.06
Free cinemas, concerts, lectures and musical instruments, \$260,855.99
Stationery, magazines, religious and other literature, \$171,088.25
Free distribution hot and cold drinks, chocolates, biscuits and cigarettes (in France and Belgium only), \$136,281.49
Cash gifts to units, \$163,368.79. Being 5% of gross canteen sales to soldiers of France, to be spent on extra rations, comforts, etc., and including cash gifts to units in England.
British Y.M.C.A. work for Imperial soldiers, and Chinese, \$75,000.00.
3.—War Service in Canada - \$951,339.61
Huts and equipment, rentals, etc., \$208,416.68
Free athletic supplies, \$17,121.02
Free distribution stationery, reading matter, games, etc., \$31,915.02
Free cinemas, concerts, lectures, musical instruments, etc., \$30,664.64
Y.M.C.A. service on transports, munition plants and internment camps, \$68,859.38
Boys' farm service programme, \$50,541.65
Barracks, hospitals, discharge depots and troop trains, \$55,026.50
Y.M.C.A. service to Canadian Expeditionary Force to Siberia, \$15,000.00.
4.—Regular Work of the National Council— \$150,615.80
Part of above is Military Administration and the remainder National supervision of Territories, Boys' Work, Student, Industrial and Railroad Departments, funds for which were subscribed in conjunction with Military Funds by agreement of regular contributors.
5.—Young Women's Christian Association— \$100,000
(Amount raised in 1918 Campaign for work of Dominion Council of Young Women's Christian Association for girls, soldiers' dependents, etc.)
Recapitulation:
Total Receipts, 1918 \$10,067,143.46
Total Expenditures, 1918 9,121,989.23
(See details above)
Total Balance on hand \$945,154.23
Balance in Canada 248,740.44
Balance Overseas 696,413.79
(Balances were chiefly made up of canteen stocks in hand or in transit.)

NOTE: The net earnings of canteens were spent entirely on service to the men, and in order to carry on the full Y.M.C.A. programme overseas in 1918, \$1,432,896.69 was sent from Canada, and, in addition, \$500,000 for the Khaki University and \$75,000 for the work of the British Y.M.C.A. for Imperial Soldiers and Chinese.
F. L. RATCLIFF, Chairman Finance Committee.

What Soldiers Say About the Y.M.C.A.

Lt.-Col. W. P. Pursey, Dominion President, Great War Veterans' Association, Sydney, N.S. Jan. 23, 1919.

"There is no bone of contention between the G.W.V.A. and the Y.M.C.A. The Y.M.C.A. has done a work that no other institution could or would do. Speaking as president of the organization, and for our members, I wish the Y.M.C.A. God-speed in their splendid work."

Philip Gibb, War Correspondent, London Chronicle.

"I want to pay a very big tribute, my warmest tribute to the work of the Y.M.C.A. Very quickly after each battle these men of the Y.M.C.A. brought out their tents and equipments, by means of which they could give hot cocoa, coffee and cigarettes to these men in the lines, and words cannot say what a cup of coffee meant to men plastered in white clay and whose I have described. I remember seeing and marvelling at the rapidly with which the Y.M.C.A. got up their tents and equipment under Vimy Ridge, within a few hours of the capture of that place."

Major General Sir David Watson, Quebec, P.Q., Commanding Officer, 4th Canadian Division.

"The Y.M.C.A. over here is doing a most noble work, and I am proud of the work that is being carried out by the Canadian Y.M.C.A."

No. 46885, Pte. F. Frieman, 21st Battalion.

"On behalf of the boys who travelled from Halifax I really take pleasure in thanking you for the splendid work done by your representative on the train. Judging by unfavorable reports, I while in England, had been prepared for a neglected welcome of returned soldiers. But I am glad to say they are more than well looked after on the road to their homes, and in Halifax."

L. A. Hector, Regina.

"I would like to take this opportunity before finally leaving the Military Service of thanking you and the Y.M.C.A. organization, first for the many good things I enjoyed in France, and secondly for the cheerful, helpful work during the journey homeward. I voice the appreciation of many others."

Signaller J.D. Smith, Belmont, Manitoba, 43rd Battalion.

"Let me now say anything against the Y.M.C.A. to me, or he will get what for if I catch him. It is in France we found the great need of the Y.M.C.A., and, believe me, it is a Godsend to the boys in the trenches."

Driver E. L. Milth, Vancouver, B.C., 45th Battery.

"The prices charged by the Y.M.C.A. canteens are rivalled by no other canteens, and more than that they sell Canadian goods—Canadian cigarettes, Canadian maple sugar, milk, fruit, and cereals. I cannot see anything wrong with the Y.M.C.A., and if the people at home knew its real value to the boys at the front they would give it all the support it needs."

Corporal G. Waterman, Vancouver, B.C.

Y.M.C.A. Budget for 1919

THE total budget of the National Council of the Canadian Y.M.C.A. this year calls for an expenditure of \$2,869,669. The cost of the Y.M.C.A. work for the soldiers overseas, estimated at \$1,350,000 for eight months ending August 31st, will, it is expected, be provided for by the balance of funds on hand overseas, by the liquidation of overseas assets and 1919 canteen earnings. The budget in full outline is as follows:

- 1. Overseas Work for Soldiers Until Conclusion of assets and 1919 canteen earnings \$1,350,000
2. Service to Returning and Returned Soldiers - \$973,549
Red Triangle Service on Transports, \$120,000.
Red Triangle Service at Disembarkment Ports, \$50,000.
Red Triangle Service on Troop Trains, \$30,000.
Free distribution apples, chocolate, cigarettes, games, etc., to soldiers coming home, \$145,000.
Service to Canadian Military Hospitals, Camps and Barracks and in 11 Red Triangle Clubs, \$398,849.
Red Triangle Service to Canadian Siberian Expeditionary Force, \$50,000.
Appropriations to Local Associations for Military Work, \$88,500.
(This furnishes dormitory accommodation, bathing facilities and other privileges for enlisted and discharged men.)
Sex Education, Internment, Camp work, etc., \$28,750.
Administration National and Divisional Headquarters, \$59,450. Total, \$973,549.
3.—National and Reconstruction Work— \$466,120
Extension Y.M.C.A. work among Boys, \$30,035.
Extension Y.M.C.A. work in Counties, \$35,055.
Extension Y.M.C.A. Industrial and Railroad work, \$62,400.
For promotion of physical work and Sex Education, \$16,275.
For student and general Religious work, \$24,520.
For Supervision of Districts, \$84,100.
For Canadian Training School for Y.M.C.A. Officers and Recruiting and training, \$20,000.
For General administration, office, accounting and miscellaneous items, \$143,735.
Total \$466,120.

Y.M.C.A. Requirements, 1919

Total Y.M.C.A. Budget - \$2,869,669
Items 1, 2 and 3 above - \$2,789,699
Expenses of 1919 Campaign - 80,000
Required for Work Overseas (as above) - 1,350,000
Required for Work in Canada (as above) - \$1,519,669

Plan for Meeting Needs

Overseas
Balance on hand overseas - \$696,413.79
Estimated 1919 Canteen Earnings - 500,000.00
Proceeds, sale of Equipment overseas (estimated) - 150,000.00
Total available for Overseas - \$1,346,413.79

In Canada
Required for Work in Canada (as above) - \$1,519,669.00
Balance on hand in Canada, January 1, 1919, 248,740.44
Outstanding 1918 Subscriptions - 400,000.00
648,740.44
Contingencies (New Red Triangle Clubs, etc.) - 22,071.44
Net Y.M.C.A. Budget - \$893,000.00

Summary of Red Triangle Campaign

- (a) Net Y.M.C.A. Budget, as above - \$893,000.00
(b) Young Women's Christian Association— \$175,000.00
(This part of the Red Triangle Fund is being asked for the work of the Dominion Council of the Young Women's Christian Association, including care of soldiers' dependents coming to Canada.)
(c) To British Y.M.C.A. - \$32,000.00
For Canadian representatives on reconstruction work in Poland and France.

Total Objective - \$1,100,000.00

National Council, Young Men's Christian Associations of Canada
The Red Triangle Campaign is under the distinguished patronage of His Excellency, the Duke of Devonshire, K.G., G.C.M.G., G.C.V.O., P.C.
Hon. Campaign Chairman: JOHN W. ROSS, MONTREAL
Campaign Chairmen: G. HERBERT WOOD, TORONTO
Campaign Treasurers: THOMAS BRADSHAW, TORONTO
Campaign Director: CHAS. W. BISHOP, TORONTO

VETERANS

Items of Interest to Returned Soldiers Will Be Printed in This Column. If Phoned or Sent In.

G.W.V.A. ENTERING ON PERIOD OF ACTIVITY

The next ten days will be notable in the annals of the G. W. V. A., as one of the busiest and most important periods in the history of the association. Friday night will witness a great mass meeting of veterans at Massey Hall, who will discuss the problem of the imperial reservists from every angle, their pensions (or rather the lack of them) coming up for special consideration. Other important matters may be taken up at this meeting, which will be attended by C. G. MacNeil, Dominion secretary of the G. W. V. A., Mayor Church, and other very prominent Canadians. Saturday afternoon will witness the big club drive parade of the veterans, starting from Queen's Park, every branch being fully represented, and a float accompanying the G. W. V. A., giving a succinct, but vivid resume of the activities of the association and its accomplishments during the past three years. On Tuesday night next, commencing at seven o'clock, veterans from every part of the city and environs will congregate at Riverdale Park, and participate in a grand tattoo and trench raid, the G. W. V. A. having charge of the raid.

MOTHER WITH INCOME IS REFUSED PENSION

The mother of a sergeant-major of the 7th Battalion, who died on February 2, 1919, has been refused a pension by the board of pensions' commissioners, because it has been shown that she is in receipt of an income larger than the pension desired. It has also been definitely proven that the income, although larger than the potential pension, is not at all adequate for the maintenance of the family, and officials of the West Toronto G. W. V. A. have pointed out that if the government was to enact legislation in accordance with a resolution recently passed by that branch, urging the grant of a pension to a mother in respect to a son killed in battle, this pension would equal one-third that granted to widows under existing regulations. In this case, the father is an invalid, who has been unable to earn more than \$73 since January 1, a crippled daughter, another daughter, aged nineteen, who has to look after the household, and a much younger daughter who earns \$11 a week, \$5 of which goes to the support of the family. Added to this there is an insurance of \$50 a month from the city. This totals approximately \$68 a month as against a necessary \$85 a month at the least. If the government had enacted the legislation suggested, the family would be able to receive one-third of the ordinary widow's pension of \$40, or \$13 a month. Added to the \$58 now received by the family it would make a total of \$81,



SPECIAL!

Waists at Reduced Prices

By a special purchase we are able to offer our patrons a large choice of waists in crepe de chine and striped silks at prices far below ordinary figures. Our models in crepe de chine are tastefully developed with tucks, embroidery and pearl buttons; the striped silks all strictly tailored.

Regular Price \$7.50 Selling at \$4.95

Waists at Reduced Prices

HOSIERY

Dainty stockings are what every woman desires. We are displaying a large and varied assortment in silk and fibre silk at prices ranging from

49c to \$3.00

Come and See Them

W. & D. Dineen Co., Limited 140-142 YONGE ST.

Veterans' Meetings

Tuesday, April 29. G.W.V.A. West Toronto, St. Julien Hall, euchre-dance, 8 p.m. "Wanted," a Committee at Bonar Presbyterian Church, 8 p.m. Ward v. Piquet, Parkdale G.W.V.A. at Western Y.M.C.A. College and Dovecourt, 8 p.m. G.W.V.A. euchre-dance, St. George's Hall, Elm street, 8 p.m. Wednesday, April 30. Parkdale Auxiliary dance, Davy's Dancing Academy, 8 p.m. Thursday, May 1. Riverdale G.W.V.A. general meeting, Oddfellows' Hall, Broadview avenue, 8 p.m. West Toronto G.W.V.A. Ladies' Auxiliary dance, St. John Hall, Bloor and Lansdowne. Friday, May 2. Mass meetings at Massey Hall on behalf of immigrants under the auspices of the G.W.V.A. 8 p.m. Originals' club executive at No. 3 Edward street, 8 p.m. Saturday, May 3. Veterans' Club Dr. campaign parade at Queen's Park, 2.30 p.m. Tuesday, May 6. Grand military tattoo and spectacular trench raid, Riverdale Park, 7 p.m.

SOCIETY

Conducted by Mrs. Edmund Phillips.

Mr. and Mrs. Frank Mackinnon have bought the old rectory at Grimsby, and are improving it before moving in. Mrs. T. C. Burt, who has arrived in town from Chicago, and is the guest of Lady Gage, Wyckwood Park. The concert party of the 3rd Battalion is giving an afternoon entertainment at Loew's Theatre on Thursday and Friday. The Young Street Methodist Church audience last night for the annual choir concert, when Mr. Barnaby Nelson, conducted and Miss O. Ockley, L.C.M., the organist, played the accompaniments. Mrs. John Macdonald, who has recently returned from New York, sang and looked radiant in white and silver brocade. Miss Kathleen Hungerford, who also sang, was very pretty in black satin and jet. Mr. Blake Lister was another singer taking part. Mrs. J. J. Gibbons gave a very delightful little luncheon party yesterday at the King Edward, when the table was decorated with a bouquet of Frank Dunlop roses.

COMFORTS FOR TROOPS LOST BY TORPEDOING

Women's Patriotic League Explains Why Boxes Never Reached Soldiers in France. At the meeting of the Women's Patriotic League held yesterday Mrs. Arthur Van Koughnet, in her report on soldiers' comforts, explained that one of the boxes alone cost \$3 you will readily understand that the 45 specially arranged gifts were not only valuable in money but were filled with affection and interest that surrounded the packing of them by so many friends. These went out among 20 cases, some of which were individual gifts from the Omagh Women's Institute, near Milton, Ontario. These shipments cleared on the steamer Flavia, (Canadian line) which sailed from Montreal, August 5, 1918, and was subsequently torpedoed. Not until March of this year some time after the signing of the armistice were our inquiries, which were made by cable after cable with numerous letters and telegrams both to Montreal and various points in England, definitely answered. It was impossible for the authorities to give us this information in wartime and so we suffered much anxiety while the donors patiently waited for some news of their gifts. It was our first real loss after four and a half years of forwarding what was to us a sacred trust.

SOLDIERS ON FURLOUGH SEE TRIUMPHAL MARCH

Reuter's Agency. London, April 27.—Every overseas soldier on furlough in London on May 3 will be afforded a unique opportunity of witnessing his comrades' triumphal march as arrangements have been made whereby they will line the route, namely, Canadians along the Strand from the west to the Hotel Cecil; Australians from that point around Australia House to Aldwych; New Zealanders at Aldwych; South Africans and soldiers of the crown colonies from Aldwych to Kingsway.

DEATH OF MRS. JAS. ARMSTRONG

The death of Mrs. K. Armstrong, widow of James Armstrong, at her home, 546 Merton street, removes one of the city's oldest residents, she having resided in the east end of the city for more than sixty years. As a member of Berkeley Street Methodist Church, she had a wide circle of friends, she is survived by five daughters: Mrs. W. Coulter, Mrs. A. E. Canham, Mrs. W. Maynard, Mrs. Wm. Joseland, Warkworth, Ont., and Miss Margie Armstrong, and four sons, William, Robert and George of Toronto, and James, chief of the Kingston fire department.

COMMISSIONER REPORTS ON JUVENILE COURT

Properly Commissioner Chisholm, reporting on the juvenile court quarters and the detention home, among other things suggests that the detention home should be under the control of a matron instead of a man. He is of the opinion that too many children are sent to the detention home and that a unique opportunity, if such children were allowed to remain in their homes until summoned to the court, would not only save the city considerable expense, but would greatly improve the work.

PATRIOTIC LEAGUE

In a resume of the work done by the Women's Patriotic League during the war, and reported yesterday at a meeting at which Mrs. H. D. Warren presided, it was reported that Toronto Island Delivery. Delivery of The Morning World at Hanlan's Island Centre Island, and Ward's Island will resume on May 1st. An early and efficient service is assured. Orders telephoned to Main 5308 will receive prompt attention.

A. W. WRIGHT ILL.

The condition of A. W. Wright, vice-chairman of the workmen's compensation board, and former editor and Conservative organizer, who is critically ill, was reported last night as being unchanged.

THURSDAY DANCE.

The dance which is to be held on Thursday night under the auspices of the West Toronto Ladies' Auxiliary will be held at St. Julien Hall and not at Brown's Hall.

SISTERS GET PENSIONS.

The famous Melville insurance case has been settled, West Toronto G.W.V.A. reporting that the city has at last decided to pay the thousand dollars due to Miss Melville, the sister of Corp. Melville, of the 15th Battalion, who died some months ago. The city had hesitated because it was believed that the sister as such

MANY CLAIMS ADJUSTED.

Since April 17 West Toronto G.W.V.A. officials have adjusted cases for veterans totalling not less than two thousand dollars. Among these is an adjustment of \$99.67, deferred pay for a naval rating, a fact which shows that the G.W.V.A. can and does adjust claims for returned naval heroes. The Melville insurance case was another notable achievement of the branch on behalf of its members.



"I don't think I can go, Jessie, for I just feel wretched"

"Oh, I'm so sorry, for I did so want you to be there." "I hate to disappoint you, dear, but you know how miserable I have been lately." "Yes, but I thought you were better." "So I am some days, and then I just seem to be as bad as ever again. I get so weak that I do not feel able to stir." "What is the trouble?" "The doctor says I am anaemic. He says the blood is thin and watery, and I do not get the good of the food I eat. Goodness knows I do not eat much, either, for I have no appetite." "Why not try Dr. Chase's Nerve Food?" "Would that help me, do you think?" "I do not see why it should not. You remember how pale and weak I used to be. Well, it was nothing else than Dr. Chase's Nerve Food that cured me. And I am not looking as though I needed any medicine now, am I?" "If I could only be strong and healthy like you are, Jessie, I would give anything."

Lighten Your Washday Labor. Comfort and convenience count on washday, perhaps more than on any other day of the week. Anything that will lighten the work is doubly welcome then. EDDY'S INDURATED FIBREWARE Wash Tubs and Washboards. Eddy's Fibre wash-tubs are easy to lift and easy to carry. They keep the water hot a long time because they do not radiate heat as galvanized iron or tin will do. They cannot leak, because they are made in one piece, without joint or seam. And the cost is actually less because they will outlast several of the old-fashioned kinds of wash-tubs. Eddy's Twin Beaver Washboards save time by the special crimp which loosens the dirt easily. A washing surface on each side gives them double the efficiency of the ordinary washboard. The E. B. EDDY CO. Limited HULL, Canada Makers of the Famous Eddy's Matches

approximately the number of articles forwarded was 14,780,325, valued approximately at \$4,730,300. Of the articles included, 1,210,025 were pairs of woolen socks. For the year just elapsed, receipts were \$19,602.56. This amount had been expended on boxes for overseas equipment and supplies for hospitals, leaving a balance of \$8.75.



As Old as his Arteries

The doctor can't help it. He knows that the man has hard arteries, high blood pressure, and beginning kidney and heart disease, due to long neglected chronic constipation. It isn't the other man's fault—directly. He's only 45—but he never realized that his constipation was a serious thing. He never knew how to treat it. He has taken bushels of pills, gallons of castor oil, mineral waters and salts, which have battered and tortured his alimentary canal from one end to the other; and he wonders why his health keeps getting worse. He doesn't know that his food waste has poisoned him, and has bred disease that is going to "get him" before his time. Nujol is for just such a man—for every person whose bowels do not move easily and thoroughly at regular intervals—especially for those in advancing years whose body machinery will not stand rough treatment. Nujol softens the accumulated food waste in the large intestine, and moves it gently out of the system, carrying those poisons with it, which, if allowed to remain, cause over 90% of human illness. Nujol supplies the lubrication that Nature can't supply as age begins to make itself felt. This man might have known in time—but Nujol is new—the accepted modern treatment for constipation. You can avoid such a misfortune as his. Get a bottle of Nujol from your druggist today and send for free booklet "Thirty Feet of Danger" expressing clearly the soundest medical authority on constipation and self-poisoning.

Warning: Nujol is sold only in sealed bottles bearing the Nujol Trade Mark. At all druggists. Insist on Nujol. You may suffer from substitutes. Nujol Laboratories STANDARD OIL CO. (NEW JERSEY) 50 Broadway, New York. Nujol Laboratories, Standard Oil Co. (New Jersey), 50 Broadway, New York. Please send me free booklet "Thirty Feet of Danger"—constipation and auto-intoxication in adults. Name: Address: "Regular as Clockwork"

PLAIN TALKS ON INVESTMENTS

By Mark Harris

Every once in a while some Canadian Newspaper Editor wakes up to the fact that the vast natural resources of Canada are owned to a great extent by outsiders—mostly Americans—and then the Newspaper Editor writes a strong article on the subject, which usually does more harm than good.

Everybody will admit that the riches of Canada rightfully belong to Canadians, but when those Canadians refuse to put up the money to get the riches, it won't do them much good to scold the other fellow who recognized the opportunity and grasped it.

Right at the present moment several Canadian companies are vigorously developing the oil and gas resources of Ontario, and at least one of these companies is offering good Canadians the opportunity of sharing the prosperity that must come to the successful pioneer.

This Canadian company is the Castle Oil & Gas Co., and if there ever was a meritorious proposition offered it is this one.

"Castle Oil" has paid its shareholders regular dividends of 4 1/2% every three months (the next quarterly dividend being due May 10th, to all stockholders of record April 30th), and I think even the pessimist will agree that 18% a year is a mighty fine income.

Three months ago I called attention in this paper to "Castle Oil." The stock was then selling at one dollar a share, while today it is selling at \$1.25, and when another three months goes by I expect it to be much higher.

There is a reason for this advance, and a mighty good reason at that.

The reason is not the large dividend of 18% yearly, although any security paying such a high rate is certainly worth a premium.

The advance in Castle Oil, however, was not caused by the dividend; it came from an achievement that must eventually bring fame as well as wealth to the company, this achievement being the opening up of a new gas district known as Shetland.

Some readers of this may not fully appreciate the value of a new gas district, so I will explain that a gas well is usually preferred to an oil well, because it means less trouble and more profit.

The Castle Oil Co. holds leases on more than 5000 acres at Shetland; therefore, when they brought in a 300,000 cubic feet per day gas well, it caused values in that district to jump rapidly, and unless I am a poor prophet, these Shetland properties alone will soon be worth more than the total capital of the company.

Natural Gas is not only in big demand in Ontario, but it also commands a high price at the well, so, with 5000 acres to drill, Castle Oil certainly has a bright future.

The company is now drilling its second well at Shetland, and this well should be finished within a week or two.

These wells cost about \$8000 to \$10,000 each; therefore, if the company drills only ten more wells, and these ten wells average only 300,000 cubic feet per day (the general manager expects much larger wells), it would mean a total of 3,600,000 feet per day, worth at the present rate of 20 cents per thousand, about \$720 per day, or more than \$250,000 yearly.

These figures cover only 12 small wells, while there is ample room on the property for 80 to 100 gas wells, so when I say that there are great potential possibilities in Shetland alone, I only speak the truth.

You won't find an investment like Castle Oil every day, and if you think differently, look around and compare some others with this company.

Compare the capitalization, the officials of the company, which form the management, the earnings and dividends, and last, but not least, the record showing what has been accomplished, and when you do all this you will appreciate why I recommend the purchase of Castle Oil at \$1.25 per share.

If you have money for investment buy "Castle Oil" and buy it today, so you can secure the next regular dividend of 4 1/2%.

All orders reaching my Toronto office May 1st will be included in this next dividend, providing your letter is postmarked on April 30th.

I don't like to rush anybody into making a purchase, but this is one time when it pays to act quickly.

Write, call or phone.

Faithfully yours,

Mark Harris

ROYAL BANK BUILDING, TORONTO.

Telephone, Adelaide 52.

DOMES OUTLOOK MUCH IMPROVED

Annual Report is in Hopeful Mood—Four Dollar Ore on Dome Extension.

While the annual report of the Dome Mines Company for the year ended March 31 last shows no augmentation of ore reserves and a net loss for the twelve months of \$155,456, the total surplus being reduced to \$56,501, there is a distinctly optimistic note sounded, and the hope is expressed by general manager Kaeding that the resumption of dividends is not far distant.

President J. B. Bache contributes a brief report, in which, touching upon the option on Dome Extension, which expires on March 15, 1920, he says: "Your directors will so long as conditions justify, continue exploration and development work on the extension property and if, in their opinion, results justify the completion of the purchase, a special general meeting of the shareholders will be called and thereat all the available information will be laid before them. The work of exploration now being pursued consists of crosscutting on the sixth level in the Dome Extension property, and also on a previously located by diamond drilling. This work has now progressed to the extent that the zone has been entered out by a crosscut which discloses ore of about \$4 grade.

Resumption of Operations. C. D. Kaeding, vice-president and general manager, dealing with the resumption of work at the mine since the beginning of the year.

"We have succeeded in organizing our staff and it is with much pleasure that we are able to report over ninety per cent of the old employees, who occupied leading positions, are with us again in their former places. We have taken on a number of our old workmen also, especially in the mill, and have been able to augment the force in any department as rapidly as our requirements demanded. At the present time we have 150 men on the rolls, and are adding to this number daily.

"Touching upon the completion of the ore and waste-handling systems in connection with No. 3 shaft, he says that it is now possible to conduct a maximum operation of stopping and development on any or every level in the mine. Since the issuance of the interim report in January, diamond drilling was carried out on the 1,150 foot level to locate the ore zone intersected by Hole 9. The results indicate that this ore zone has been found and drifting and cross-cutting will be carried out to determine whether payable areas can be opened up.

Outlook is Bright. Mr. Kaeding is satisfied that there will be efficient working conditions, and remarks that as the cost of operating supplies is dropping satisfactorily, the outlook for the department is as bright as at any time in the company's history.

There is no change in the estimate of the ore reserve, the tonnage being sufficient to ensure the maximum operation of the mill plant for four years. Mr. Kaeding expresses the hope that following the resumption of mill operations in the latter part of April, a tonnage of 600 tons daily will soon be attained, and that the profits will be such as to justify the resumption of dividends as soon as the working capital has been adequately built up. His report concludes as follows:

"It is estimated that the cost of producing gold during the period mentioned will not exceed \$11 per ounce. As the evolution progresses, it should be maintained at or near this figure, depending upon the continued increase in labor efficiency and decrease in supply costs. "For comparison, it should be noted that since March, 1914, up to the time milling was suspended, the cost of producing approximately 300,000 ounces of gold from 1,300,000 tons of ore, at an average cost of \$11.30 per ounce, was less than one-quarter of an ounce of gold per ton in the material treated."

Current Assets. The excess of net current assets over current liabilities amounts to \$488,895. Capital assets total \$4,650,985, the mining claims and properties being valued at \$2,575,000, and the plant and equipment at \$1,855,985. Current assets total \$495,453, including \$125,488 cash on hand and in banks. The reserves at March 31, 1918, totaled \$895,329, and after adding to this the sum of \$234,373 for depreciation, and making other adjustments, the total reserves at March 31, 1918, was \$824,797, from which is deducted the net loss for the past year of \$455,456, and the inventory adjustment of \$12,540, leaving the total surplus at March 31 last of \$56,501.

CHICAGO MARKETS.

J. P. Bleckell & Co., Standard Bank Building, report the following prices on the Chicago Board of Trade:

	Open	High	Low	Close	Prev. Close
Corn					
May	169	172	165 1/2	166	170 1/4
July	168 1/2	170 1/2	165	165 1/2	168 1/2
Sept.	164 1/2	167	162 1/2	164 1/2	164 1/2
Oats					
May	72 1/2	73 1/2	71 1/2	72 1/2	72 1/2
July	72 1/2	73 1/2	71 1/2	72 1/2	72 1/2
Sept.	69 1/2	72 1/2	69 1/2	70 1/2	69 1/2
Pork					
May	52.75	53.25	52.75	52.90	53.25
July	51.50	51.60	51.10	51.10	51.75
Lard					
May	32.90	33.00	32.40	32.50	32.87
July	31.50	32.25	31.20	31.60	31.92
Ribs					
May	25.50	25.75	25.50	25.87	28.87
July	27.90	28.50	27.50	28.00	28.25

MONTREAL PRODUCE MARKET.

Montreal, April 28.—There was no change in the condition of the local market for cash grain today, prices being about steady with a very limited demand for supplies from all sources and the volume of business was small with sales of odd cars of No. 2 Ontario barley at \$1.25; extra No. 3 barley at \$1.23; No. 2 barley at \$1.22; No. 3 Canadian western barley at \$1.23, and sample grades at \$1.10, while No. 2 Canadian western oats sold at \$3 1/2 c; No. 3 C.W. at \$3 1/2 c; No. 1 feed at \$3 1/2 c, and No. 2 feed at 80 1/2 c per bushel ex-store.

The undertone to the market for rolled oats is stronger. A very strong feeling prevails in the market for haled hay. A stronger feeling is shown in the local egg market today and prices were advanced 1c per dozen. The feature of the butter trade was the more pronounced weakness in the market. Flour—Manitoba spring wheat patents, firsts, \$11 to \$11.10. Rolled oats, bag 90 lbs., \$3.90 to \$4. Bran, \$4; shorts, \$4 to \$4.60. Hay—No. 2 per ton, car lots, \$29. Cheese—Finest easterns, 24c to 25c. Butter—Choice creamery, 60c to 61c. Eggs—Fresh, 49c to 50c. Potatoes—Per bag, car lots, \$1.90 to \$2.25. Dressed hogs—Abattoir killed, \$30.50 to \$31. Lard—Pure, wood pallets, 20 lbs. net, 33c.

"HORACE TABER" IS SAFE. Kingston, Ont., April 28.—The schooner Horace Taber, coal laden from Oswego, which sprung a leak and was beached at Reid's Bay, was towed here today, by the steamer Cornwall. Damage is not serious.

West Tree Mines Ltd.

After careful and exhaustive investigation into the merits of WEST TREE MINES, LIMITED, shares, and a critical examination of the property owned by this company we unqualifiedly endorse this issue, and advise the purchase of the stock.

At the pre-listing offering price of 28c per share we regard the stock as one of the very best opportunities for large speculative profits that has presented itself for years in Canadian mining circles.

Present indications are that the limited amount of stock to be sold in this initial offering will be quickly oversubscribed. We therefore advise quick action on the part of those who desire to participate in this attractive offering.

A policy of "first come, first served" will be followed.

Send us your order early.

ISBELL, PLANT & CO.
MAIN 272-3. STANDARD BANK BLDG.

BROAD MOVEMENT IN NEW YORK MARKET

Spirit of Caution Prevailed, But Many Substantial Gains Were Made.

New York, April 28.—A note of caution pervaded today's stock market, but the absence of fresh complications in the foreign situation and publication of the revised league of nations covenant furnished the incentive for another broad movement, encompassing many substantial gains.

Market letters over the week-end were mainly of an optimistic tenor, albeit expressing the wisdom of taking profits, especially in speculative issues, which have recently scored the greatest advance yet.

Trading in the morning was in keeping with the feverish activity of the past fortnight, but tapered off at midday, only to resume its rapid pace in the final hour, when oils and other favorites soared to higher levels.

As is usually the case on the eve of the quarterly meeting, the course of U. S. steel was followed with keen interest for some hint respecting the "extra" common dividend, but after fluctuating within extremely narrow limits, steel closed at a large fractional loss.

The market's course was mainly guided, however, by oils and so-called oil rails. Conspicuous in the first-named division were Royal Dutch issues, at net gains of 1/2 points; Texas Company, 2 1/2, and Sinclair, 3 1/2; while Mexican Petroleum rallied over five points from its heavy opening.

Minor rallies were prominent, but failed

to retain more than part of their 1 to 3 1/2 point rise, and investment rails reacted moderately, but shippings, American International excepted, reflected a revival of interest. Independent steels were hesitant, but related equipments strengthened under lead of Crucible, Pennsylvania, Seaboard and American and Baldwin Locomotives. Sales amounted to 1,500,000 shares.

ON CHICAGO MARKET

Hughes, Harcourt & Company, 307 Royal Bank Building, received the following wire at the close of the Chicago market yesterday: The action of the cash and May corn, losing their premium over the July, and July premium over September being radically reduced, together with arrivals of Argentine corn in this country supplying the industries, suggests that this market will require new bull incentives in order to carry the advance further and also to prevent a decline to materially lower prices. The market action was extremely nervous, every return meeting with good selling opposition. On the breaks there was liberal local buying to cover earlier sales. The weakness continued throughout the session, closing prices being at the low for the day.

While oats prices were affected to a considerable extent by the corn action, a good healthy buying was in evidence. This grain commands itself to investors on account of its comparative cheapness and also the continuing reports of poor starting conditions for the crop.

Northern Ontario's Richest Gold Prospect

Prices Are Governed By the Law of Supply and Demand.

"Atlas" Stock is Already Listed on the Standard Stock and Mining Exchange.

"Atlas" Can Be Bought or Sold on the Standard Exchange as Soon as the Present Issue of 300,000 Shares of Treasury Stock at 25c per Share is Distributed.

Estimate for Yourself What Price the Steadily Increasing Demand for "Atlas" Stock Will Cause It to Sell at Then.

REMEMBER!!!

THE DEMAND IS INCREASING THE SUPPLY IS DIMINISHING

BUY ATLAS NOW

J. P. CANNON & CO.

56 KING STREET W., TORONTO. Phones Adelaide 3342-3343.

NEW HIGH PRICES IN MONTREAL MARKET

North American Pulp Furnished the Day's Spectacular Feature.

Montreal, April 28.—There was a generally stronger tone to the market for local securities today, several showing a gain of 1 point or more, nine making a new high price for the year, two new highs for the month and four selling again at the high record price.

In point of activity, North American Pulp in the unlisted department was the day's spectacular feature, some 20,000 shares changing hands at 5 1/2, with the close at 5 1/4, a net loss of 1/4 point.

The only other issue to show transactions of over a thousand was Smelters, which was traded in to the extent of 1,270 shares, the price rising to 29, a new high for the year, and a net gain of 1 1/2 points.

Next in activity came Canada Corporation, with sales of 550 shares. At 57 1/2 the stock made a new high record price and the close at 57 showed a net gain of one point.

Maple Leaf made a new high price for the year at 147, a net gain of 2 points, although closing bid was lowered to 146 1/2. Ogilvie made a new high for the month, at 219, also a net gain of 2 points, with 219 bid for more stock.

In the miscellaneous group, high prices for the year were made by National Breweries, 2 1/2 points up at 75; Tuckett, 1 1/2 points up at 32 1/2, with closing bid advanced at 32 1/2 and offerings at 35. In the bond list, the 1925 old war loan made a new high at 99 1/2, and 1923 sold again at its previous best price of 100 1/2.

Total business for the day with comparisons for the corresponding day a year ago:

Shares	1918	1919
Shares, unlisted	5,473	2,706
Bonds	20,985	75
	\$14,650	\$17,400

The Baldwin Gold Mine Toes the Mark

Situated in the Famous Kirkland Lake District

This great property measures up to 100% on any standard. It is 100% in the richness of its ore. A mill run on 152 bags gave \$13.30 per ton. The Hollinger Consolidated does not run over \$10.00.

Then in the size of its ore body the Baldwin is a full 100% property. Its indicated tonnage is now very great. We expect within the next 60 days to fully prove an ore body 100 feet wide.

In power plant and camp buildings we are 100% efficient. We are 100% in transportation facilities. A flag station of the T. & N. O. Railway is within 200 feet of the power house and shaft head.

In expediting development we are 100% up to the mark. A separate contract has been let for cross-cutting the ore body at the 200-foot level. This means that there will be no cessation in shaft sinking.

We are aiming at 100% in all-round progress in pushing work preparing for a mill and general management. Ore in sight will have a very perceptible effect on the value of the shares, and ore is coming into sight with unusual speed.

The Baldwin is 100% profit-maker, and in fact a 100% proposition all round. We can easily prove the great merits of this property. Get in touch with us. Write or call and let us talk it over. When you know the Baldwin you will fully appreciate the great opportunity to get shares at the present price.

Today's Market: 33 1/2 c Bid, 35c Asked. Write, Wire or Telephone Your Orders to TANNER, GATES & CO.

301-2 Dominion Bank Building. Tel. Adl. 1366. Toronto, Ont. OFFICES: Hamilton, Montreal, Detroit, Mich.

Dominion of Canada Victory Bonds

Bought - Sold - Quoted

DOMINION SECURITIES CORPORATION LIMITED

HEAD OFFICE: TORONTO 26 KING ST. E. MONTREAL ESTABLISHED 1901 LONDON, ENG.

STRONG TONE IN TORONTO MARKET

Maple Leaf, Tuckett's, Cannery and Smelters Are Prominently Strong.

The Toronto market opened the week with a strong tone, and trading was relatively buoyant...

WEALTH DEVELOPS IN CORN MARKET

Largely Due to Fact That Receipts Were Lightest for Some Time.

Chicago, April 28.—Pronounced weakness developed in the corn market today owing to a considerable extent to the fact that receipts here were the lightest for some time.

HEAVY BUYING IN MINING MARKET

Hollinger Sells at Highest Point of Year—Keora Makes Spurt.

The strikingly good demand for high-class mining stocks was the feature of yesterday's active trading on the Standard Exchange...

BE PREPARED

The war has taught us the importance of preparedness. Sickness may overtake you without warning—are you prepared?

THE DOMINION BANK

Record of Yesterday's Markets

Table with columns for TORONTO STOCKS, STANDARD STOCK EXCHANGE, and STANDARD SALES. Lists various stocks and their prices.

Future Prosperity

CANADA'S future prosperity depends chiefly on the efforts and thrift of her citizens. Those who save, provide the means for rapid reconstruction...

THE CANADIAN BANK OF COMMERCE

HERON & CO.

4 Colborne Street Main 1447 WILL BUY WILL SELL LAMBTON GOLF STERLING BANK HOME BANK ALBERTA PAC. GRAIN

Attention! Investors!!

West Shining Tree District Renowned for Fabulous Gold Showings. Rapid strides in the development of properties in WEST SHINING TREE have been made...

ISBELL, PLANT & CO.,

Main 272 Standard Bank Building.

Recent and Reliable Information on Associated Goldfields Mining Co., Ltd.

Apply to PETER SINGER 504 Standard Bank Building. Phone Main 3701-3702

KEORA

Wonderful results continue to be met with in drilling this property. Latest report shows TWENTY FEET OF ORE OF AN AVERAGE VALUE OF ONE HUNDRED DOLLARS PER TON.

KEELY, SMITH & AMOS C. P. R. BUILDING, KING AND YONGE STS.

NISSISSING DIRECTORS RE-ELECTED FOR YEAR

At the annual meeting of shareholders of the Nipissing Mining Company held yesterday...

WASAPIKA GIVES IMPETUS.

The Northern Miner says: There are now four properties under way in the vicinity of the Wasapika Gold Mines...

RELIANCE'S SILVER YIELD.

Cobalt, April 28.—Since commencing operations on the Reliance property late in November, last year...

MONEY AND EXCHANGE.

London, April 28.—Closing: Money 3 1/2 per cent. Discount rates, short and three months' bills 2 1/2 per cent.

LIVERPOOL COTTON.

Liverpool, April 28.—Cotton futures closed very steady, April, 18.62; May, 17.15; June, 16.57; July, 16.60; August, 16.45; Sept., 16.35.

AT BOSTON CREEK

It is reported in Boston Creek that arrangements are being completed for control of the Mondeau claims...

TRETHEWEY'S TAILINGS.

Cobalt, April 28.—As soon as the frost is out of the tailings pile, the Trethewey is to start treating that material...

C.P.R. IN MARCH

Montreal, April 28.—C.P.R. earnings for month of March: Earnings, \$12,374,182; expenses, \$10,825,137; net, \$1,549,045; decrease, \$1,453,737; decrease in gross, \$55,722.

NEW YORK STOCKS.

Table listing New York Stock Exchange prices for various stocks like Bank of Montreal, Canadian National, etc.

PRICE OF SILVER.

London, April 28.—Bar silver, 48 1/2 per ounce. New York, April 28.—Commercial bar silver, \$1.45 1/2.

ON PARIS BOURSE.

Paris, April 28.—Prices were irregular on the bourse today. Three per cent. rentes, 28 francs 45 centimes.

TORONTO SALES.

Table listing Toronto sales for various commodities like Bank of Montreal, Canadian National, etc.

MONTREAL STOCK EXCHANGE.

Table listing Montreal Stock Exchange prices for various stocks.

UNLISTED STOCKS.

Table listing unlisted stocks and their prices.

NEW YORK STOCKS.

Table listing New York Stock Exchange prices for various stocks.

MONTREAL STOCK EXCHANGE.

Table listing Montreal Stock Exchange prices for various stocks.

UNLISTED STOCKS.

Table listing unlisted stocks and their prices.

NEW YORK STOCKS.

Table listing New York Stock Exchange prices for various stocks.

MONTREAL STOCK EXCHANGE.

Table listing Montreal Stock Exchange prices for various stocks.

UNLISTED STOCKS.

Table listing unlisted stocks and their prices.

NEW YORK CURB STOCKS BOUGHT AND SOLD

Information concerning an unusual investment opportunity. FREE ON REQUEST. Mark Harris, Royal Bank Bldg., Toronto, Ont.

COBALT & PORCUPINE N. Y. Stocks—Grain and Cotton Bought and Sold.

FLEMING & MARVIN Members Standard Stock Exchange. 1102 C.P.R. Building, Toronto.

NORTH DAVIDSON

With an ore body over 200 feet wide on the surface carrying high values and extending in width to over 800 feet...

L. G. HARRIS & CO.

1601 ROYAL BANK BUILDING. TORONTO. Adel. 5423.

LOUIS J. WEST & CO.

Members Standard Stock Exchange. MINING SECURITIES. Write for Market Letter. Confederation Life Bldg., TORONTO.

GEO. O. MERSON & CO.

Established 1889. J. P. LANGLEY & CO. Chartered Accountants, Toronto, Ont. J. P. Langley, F.C.A., Toronto, Ont. J. P. Langley, F.C.A., Toronto, Ont.

National Trust Company Limited. Capital Paid-up, \$1,500,000. Reserve - \$1,500,000. Assets Under Administration, \$50,000,000. 18-22 King Street East, Toronto. is the rate we pay for money left with us for a fixed period of from three to five years.

E. R. C. CLARKSON & SONS TRUSTEES, RECEIVERS AND LIQUIDATORS. ESTABLISHED 1864. Clarkson, Gordon & Dilworth CHARTERED ACCOUNTANTS TORONTO

How Shall I Invest? That is the question almost every investor is asking. You can invest to best advantage by dividing up your surplus in different classes of high grade mining stocks, such as HOLLINGER, DOMTNEY, DOM MINE, BALDWIN.

Telephone Main 7841

1898---TWENTY-FIRST ANNIVERSARY, COMING-OF-AGE YEAR---1919

Market Adelaide 6100

Simpson's---Odd Pairs Curtains at Third to Half Less---Today

Solid Quarter-Cut Oak Dining Room Suite \$78.95

Fumed or Golden Finish

Consisting of buffet, extension table and set of chairs.

Buffet, as illustrated, has large linen drawer. Lined drawer for cutlery. Shaped bevelled plate mirror.

Dining-room Chairs—movable seats upholstered in genuine leather. Five small and 1 arm chair.

Extension Table—shaped feet, pedestal base.

Today, 8-piece suite, \$78.95.

Dining-room Suite, \$98.60

Quarter-Cut Oak—Fumed or Golden Finish.

Consisting of buffet, extension table, 5 small and 1 arm chair, with movable seats upholstered in genuine leather. Fumed or golden finish, \$98.60.

Save on Buffets Today

\$38.75 Buffet at \$29.95

Genuine quarter-cut oak fumed or golden finish. Colonial design.

Regularly priced at \$38.75. On sale today at \$29.95.

\$39.75 Buffet at \$28.95

Solid quarter-cut oak—fumed or golden finish. Shaped legs—linen drawer for cutlery. Shaped bevelled plate mirror. Regularly \$39.75. Today, \$28.95.

Set of Dining Chairs \$28.75

Solid quarter-cut oak—fumed or golden finish. Shaped legs—linen drawer for cutlery. Shaped bevelled plate mirror. Regularly \$34.50. Today, \$28.75.

\$28.75 Extension Tables at \$20.45

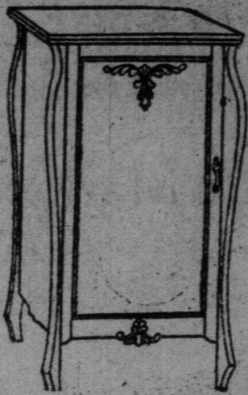
Solid quarter-cut oak top—fumed or golden finish. Pedestal base.

Regularly \$28.75. Today, \$20.45.

Extension Tables, \$36.50

Genuine quarter-cut oak—massive dividing pedestal. Wide-spreading shaped feet—48-inch top. Extends to 8 feet. Fumed or golden finish, \$36.50.

Simpson's—Fifth Floor.



Record Cabinets \$18.00

If you want a cabinet for your phonograph, the one illustrated should meet your requirements. It is finished in mahogany, fumed oak and golden oak, just like fine furniture, both inside and out. It will fit any of the large table machines. Contains rack or shelves to hold 100 records. A complete stock of other styles to choose from, ranging in price from \$9.75 to \$30.00.

Simpson's Phonograph Department—Sixth Floor.

The Home-Lovers' Club

Is at Your Service

To render assistance in furnishing your home, whether you wish to purchase a single piece of furniture or complete furnishings for a new home. Just become a club member—this entails no extra charge.

You may buy Furniture, Rugs, Linoleum, Draperies, Electric Fixtures and Photographs through the Home-Lovers' Club.

4th Floor—Fourth Floor.

Clearance of Sample Baby Carriages \$33

Regularly \$37.85 to \$47.00

Reed and combination wood and reed bodies, in fancy designs and finishes. Bungalow and Pullman styles, nicely made throughout. Some slightly soiled, having been used as samples only.

Safety Straps, 39c

Tanned leather, with nickel buckle and strong side straps.

Hoods for Go-Carts, \$2.50

White, brown, grey and black leatherette, on steel frame.

Simpson's—Sixth Floor.

Imported Tapestry Wall Papers 19c Single Roll

Regularly 25c to 40c.

New designs in leaf, scenic and foliage effects, in the latest color treatments of blue, tan, green, grey and buff, for living and dining-rooms, halls, dens and libraries.

New Floral Patterns for Bedrooms Special, 25c Single Roll

Prettily colored in pink, blue, yellow and mixed shades—some styles have birds gaily perched on the branches—others have shadow overprint effect.

Clear Crystal Varnish, 49c Quart

For furniture and interior woodwork—dries hard and glossy.

Paint Specials Duplex Varnish Stain, 33c Pint Light Oak—Dark Oak

For floors—stains and varnishes at one operation—easily applied.

SPECIAL VARNISH BRUSHES

29c—Rubber set, black bristle brushes, 2 inches wide.

Simpson's—Sixth Floor.

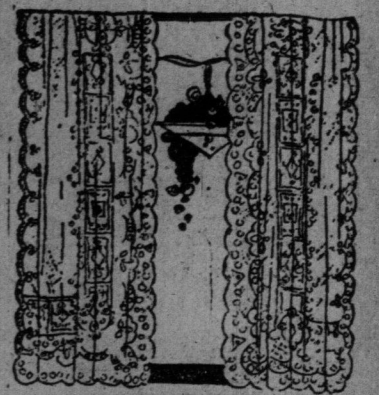
NOTIONS Specially Priced Today

- PEARL Buttons**—two-hole, twelve to a card; 14 to 24 line. Special, card, 3c.
- Le Chic** real human Hair Nets, fringe style. All shades of brown and black. Special, 6 for 25c.
- Eldorado** Pin Sheets, 160 finest quality brass pins to sheet. Special sheet, 6c.
- Gold Medal** Knitting Cotton, in white. All sizes, special, 3 balls for 25c.
- Women's Sew-On** Elastic Hose Supporters. Special, pair, 15c.

Better shop early for these—only one pair of each kind. Some are slightly soiled. Included are sturdy Nottingham Lace Curtains, Dainty Scrim and Marquisette Curtains, and a limited number of fine Swiss Net Curtains. Regularly \$1.50 to \$20.00. Today, one-third to one-half off. (No phone orders for this item.)

Bay Window Rods 75c Set

Polished Brass Extension Rods, made to fit almost any bay window. Sides extend from 22 to 36 inches, and the centre rod from 30 to 50 inches. Complete with all necessary attachments. Today, per set, 75c.



Insertion Trimmed Window Shades, 98c Each

Cream color. Trimmed with attractive insertion. Standard size—27 inches wide, 70 inches long. Complete with brackets, nails and pull. Today, each 98c.

Special! Tapestry Portieres \$3.98 Pair

50 pairs only. Reversible Portieres of medium weight tapestry, in plain red or green and red mixed colorings. Fringe top and bottom. Value \$5.98. Today, pair \$3.98.

Simpson's—Fourth Floor.

A Treat for Your Floors—Today

\$24.00 Tapestry Rugs \$18.95

50 serviceable Rugs, of Scotch manufacture—Oriental and floral designs, in good-wearing quality. Size 9 ft. x 12 ft. Regularly up to \$24.00 each. Today, each, \$18.95.

\$15.00 Seamless Velvet Rugs for \$11.95

18 only. Rugs woven without seam—short, stiff pile. Good colorings, suitable for small room or hall. Size 4 ft. 6 in. x 6 ft. 6 in. Regularly \$15.00. Today, each, \$11.95.

\$1.50 Cocoa Mats for \$1.29

Good value in heavy quality Cocoa Fibre Brush Mats. Strongly made and well bound. Size 1 ft. 6 in. x 2 ft. 6 in. Regularly \$1.50. Today, special, each, \$1.29.

Mats—Special \$1.35 Each

For bedroom or kitchen. Stencilled in different patterns, in green or brown coloring. Fringed ends. Size 2 ft. 3 in. x 4 ft. 6 in. Today, special, each, \$1.35.

"Feltol" Felt Base Oilcloth 59c Sq. Yard

Inexpensive and serviceable. Made on heavy felt base, with extra glazed finish. Good tile, block, floral and wood patterns. Sanitary and easy to clean. 2 yards wide. Square yard, only 59c.

Simpson's—Fourth Floor.

Fresh Meats, Fish, Groceries and Fruits in Simpson's Market Today

Here is the favorite mart of thrifty homekeepers in search of the purest of food products at the most economical prices. Shopping is a pleasure in this big, roomy market—because wonderful varieties, adequate stocks and good service always await you.

A Carload of Standard Granulated Sugar, 20-lb. Bag for \$2.10

It is all excellent quality, Redpath's and St. Lawrence granulated sugar, the best obtainable. These 20-lb. bags at \$2.10 should sell quickly today. Phone orders taken.

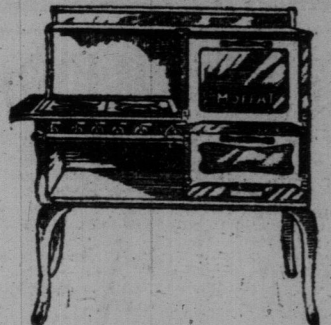
3000 lbs. Seed Onions, Dutch Sets, Today at 13c a lb.

The onions are first quality and are extremely rich in nutritive value, being one of the most nourishing articles of diet. You should get a supply today when they are going at 13c lb., or 2 lbs. for 25c.

- Quality Groceries**
- Five Roses Flour, 24-lb. bag, \$1.65.
 - 2000 lbs. Fresh Creamery Butter, lb., 6c.
 - 4,000 tins Finest Canned Pumpkin, 3 tins 25c.
 - 4,000 tins Finest Canned Peas, 2 tins 25c.
 - 4,000 tins Finest Canned Tomatoes, tin, 17c.
 - Seeded Raisins, packet, 15c.
 - Finest Cooking Molasses, tin 14c.
 - California Currants, 15 ounce packet, 22c.
 - Lombard Plums, No. 2 tin, 18c.
 - Magic Baking Powder, 1-lb. tin, 30c.
 - Crisco, 1-lb. tin, 30c.
 - Dominion Canned Vegetable Soup, 3 tins 47c.
 - Red Salmon, tall tin, 34c.
 - Pure Gum Jelly Powders, assorted, 3 packets, 25c.
 - Sure-Whip, bottle, 25c.
 - Shredded Wheat or Grapenuts, per packet, 1c.
 - Orange Marmalade, No. 4 size, 35c.
 - Quaker Oats, large packet, 30c.
 - Pot Barley, 5 lbs. 25c.
- Choice Meats and Fish**
- 200 LBS. BREAKFAST BACON, mild curing, whole or half piece, lb., 13c.
 - CHOICE ROUND STEAK, Simpson quality, lb., 37c.
 - SHOULDER ROAST BEEF, Simpson quality, lb., 25c.
 - BLADE ROAST BEEF, Simpson quality, lb., 25c.
 - BRISKET BOWL, tender beef, lb., 24c.
 - FRONT QUARTER YOUNG LAMB, lb., 25c.
 - CHOICE CORNED BEEF, lean, lb., 25c.
 - PURE BEEF DRIPPING, our own rendering, lb., 23c.
 - FRESH CAUGHT TROUT, lb., 38c.
 - COD STEAK, lb., 13c.
 - MACKEREL, lb., 13c.
 - CHOICE SMOKED FILLETS, lb., 23c.
 - SMOKED HADDIE, lb., 12c.
 - SMOKED KIPPERS, each, 3c.
- In the Fruit Section**
- California Navel Oranges, Sun-kist Brand, dozen, 60c.
 - Choice Grapefruit, good size and quality, 2 for 40c.
 - California Lemons, dozen, 20c.
 - Choice Apples, 7 lbs. 20c.
- CANDY SECTION.**
- Salted Peanuts, lb., 25c.
 - Chocolate Covered Coconut Cluster, lb., 45c.
 - Peanut Brittle, lb., 23c.
 - Fruit and Nut Fudge, assorted flavors, lb., 25c.
- FLOWER SECTION.**
- Summer Home Grass Seed, pkt., 15c.
 - Vegetable and Flower Seeds, assorted, 3 packets 25c.
 - Boston Ferns, each, \$1.29.
 - Rubber Plants, each, \$1.00.
 - Palms, each, 65c.
 - Geraniums, in bloom, each, 20c.
 - Pans Hyacinths, each, 75c.
 - Spiraea, 15c and \$1.00.

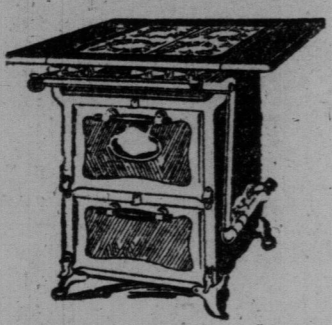
The Basement Features Stoves and Ranges

The displays in the Basement will prove decidedly interesting, because here you will see the most modern styles made by McClary, Gurney and Moffat. The great variety affords excellent choosing at moderate prices.



Moffat "Victor" Cabinet Gas Range, \$36.00

—is the very last word in stove construction. It possesses all the commendable features of a high grade cabinet gas range. Has two large ovens, each controlled by its own burners. Star drilled burners. Large open warming closet. Large cooking surface. Nickel trimmings. Just the right height and width. 25 only to sell today at \$36.00 each.

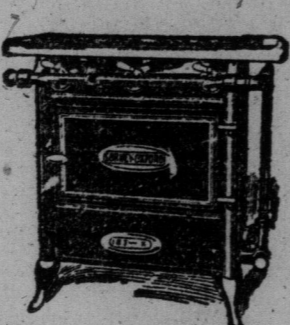


McClary's Double Oven Gas Range, \$25.75

A very popular stove. Has four large burners and one simmering burner. Nickel trimmings. Price \$25.75.

Moffat "Nelson" Single Oven Gas Range, \$22.00

15-inch oven, nickel trimmings. Price, \$22.00.



Gurney's 3-Burner Gas Stove \$16.50

For small kitchens. It has all the features of larger stoves. Star-drilled burners. 18-inch oven. Spring lever taps. Nickel trimmings. Price \$16.50.

The Victor Two-Burner Gas Stove, today, \$9.25.



"New Perfection" Oil Cook Stoves

3-burner Gas Hot Plates, \$2.98—Gurney's reliable make, star drilled burners. New Perfection Oil Cook Stoves, with glass door, two-burner size, \$7.25.

Two-burner size, today, \$18.75.

Three-burner size, today, \$24.25.



Two Special Cut Glass Offerings

Phone Orders Filled.

Cut Glass Salt and Pepper Shakers, Pair, 98c

Prettily cut floral design, pearl or sterling silver tops. Tuesday, special, pair neatly boxed, 98c.

Cut Glass Butter Tubs, 49c

Delisy floral design. Star design on bottom, notched. Tuesday special, each 49c.

Simpson's—Basement.

Business Suits for Men \$20 and \$24 For Men and Young Men

At \$20.00—Grey and brown tweed mixtures—single-breasted, 3-button—soft roll, semi-fitted sack. Regular pockets with flaps. Sizes 36 to 44, at \$20.00.

At \$24.00—Of imported all-wool medium grey pick-and-pick worsted. Single-breasted, 2-button, long, soft roll lapels. Patch pockets. Semi-fitted model. Sizes 36 to 42 at \$24.00.



Chauffeurs' Suits \$20.00 to \$30.00

Made up in regulation models from dark grey whipcords at 25% less than today's prices. Sizes 34 to 36, \$20.00; sizes 35 to 38, \$25.00; sizes 36 to 42, \$30.00.

Simpson's—Main Floor.

The \$22.50 Overcoats For Men and Young Men, Are Remarkably Good Value.

Made from all-wool tweeds, in smart grey mixed effects. Trencher model, with all-around detachable belt. Coat may be worn as a slip-on. Sizes 34 to 42—\$22.50.

Men! See the New Neckties and Shirts

Neckties

At 50c—Printed warp and English foulards, in shadow effects. Big variety of patterns.

At 75c—Four-in-hand Neckties, in plain or floral designs. Slide-easy band.

At \$1.00—English and Swiss Silk Neckties, in figured, striped, floral or all-over patterns.

Shirts

Men's Arrow and Forsyth Shirts at \$2.50

Plain and fancy hairline and cluster stripes. Woven cord or repp materials. Short or long sleeves. Sizes 13 1/2 to 18.

"Arrow De Luxe" Shirts, \$3.00—Finest quality imported Russian cord twill and zephyr materials. Sizes 14 to 18.

Simpson's—Main Floor.



Just \$11.50 for Boys' Fine Suits

Dark brown and black striped tweed. Single-breasted—all-around loose belted model. Combination buckle and button fastener. Full-fashioned bloomers. Sizes 8 to 12 years—\$11.50.

Boys' Suits, \$14.00

Medium grey, with small check patterns. 3-button model, with all-around loose belt and patch pockets. Full-fashioned bloomers. Sizes 8 to 12 years—\$14.00.

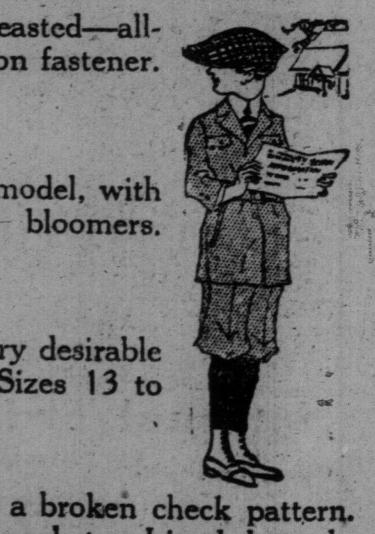
Boys' Waist-Seam Suits, \$12.00

Made from grey and black striped tweed, with the very desirable plain back. Vertical pockets—full-fashioned bloomers. Sizes 13 to 34—\$12.00.

Boys' Suits at \$16.00

Striking grey all-wool firm finished tweed suits, with a broken check pattern. Single-breasted—all-around loose belted model. Vertical pockets. Lined throughout. Full-fashioned bloomers. Sizes 13 to 34—\$16.00.

Simpson's—Main Floor.



FOR
Cor. Ly
128 feet
S. H.
King Street

PROBS:

OR
AYEA
FR

Sir William
Up Inve
Departm
Evidence
Duncan.

After sitting
ence, Sir Wil
appointed com
the charges in
Ayerst, chief
H. Hartley De
lature, yesterd
ing, in which
Mr. Ayerst. I
had shared in
detections.

The commis
R. McKay, M
Hartley Dewa
Monahan, cou
change to mak
the same tim
Mr. Monahan
conclusions.

"It may say
gues no shor
agreement eve
Ayerst that
money which
solved from
Agency. It is
faction that th
or expectation
Ayerst to sh
think that the
ment that he
Further, said
finding there
to give Mr. A
money, which
proven, howe
to take any,
have no d'ut
the statement
take the mone
Net.

In regard
which Mr. Mc
in his summ
said he found
money being d
commissioner
by Solomon th
handed to Mr
sons' one tha
the money was
that it should
reason was
money he rite
case against
Solomon had
was dep-sited

(Concluded)

METHOD
COMB

Millionaires
Against P
couv

Methodists
an anti-socia
to informatio
the general o
Methodist ho
the Wesley F
World yester
Methodist me
sociates were
ing an agita
church from
against the s
at the gener
ton. This is
self at the s
ings which w
hot fight eve
nouncement i
Sir Joseph i
defeat in the
fatives in th
quoted as an
ronto confer
Dr. Chown, I
and other a
ence officers
that co-oper
should be th
Canadian ind

Bro. Parro
Methodist off
low." But t
used that a
than a rich
Rev. Dr. W
idea that the
high and mi
among the A
lines are ab
said "It
confined wit
barriers, but
commerce an
and politics,
all that conce
race. It de
door man to
cerns itself
its condition
does so not
of divine ju

DINE

The Dinee
attention to
of men's
at window
such famous
tale. Stetson
will as cur
bats at \$3.75
Don't forg
the rain and
cage, 1 1/2 Yo