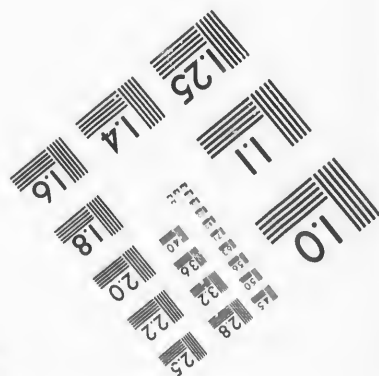
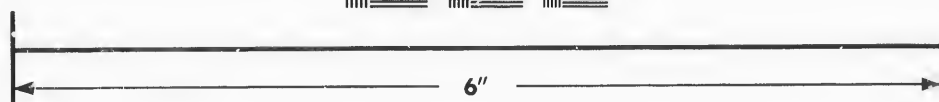
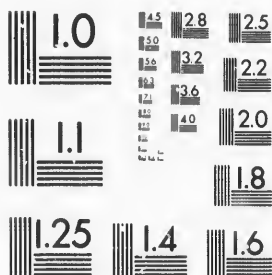


**IMAGE EVALUATION
TEST TARGET (MT-3)**



**Photographic
Sciences
Corporation**

23 WEST MAIN STREET
WEBSTER, N.Y. 14580
(716) 872-4503

15 28 25
20 22
18

**CIHM/ICMH
Microfiche
Series.**

**CIHM/ICMH
Collection de
microfiches.**



Canadian Institute for Historical Microreproductions / Institut canadien de microreproductions historiques

10

© 1987

Technical and Bibliographic Notes/Notes techniques et bibliographiques

The Institute has attempted to obtain the best original copy available for filming. Features of this copy which may be bibliographically unique, which may alter any of the images in the reproduction, or which may significantly change the usual method of filming, are checked below.

L'Institut a microfilmé le meilleur exemplaire qu'il lui a été possible de se procurer. Les détails de cet exemplaire qui sont peut-être uniques du point de vue bibliographique, qui peuvent modifier une image reproduite, ou qui peuvent exiger une modification dans la méthode normale de filmage sont indiqués ci-dessous.

- | | |
|--|--|
| <input type="checkbox"/> Coloured covers/
Couverture de couleur | <input type="checkbox"/> Coloured pages/
Pages de couleur |
| <input type="checkbox"/> Covers damaged/
Couverture endommagée | <input checked="" type="checkbox"/> Pages damaged/
Pages endommagées |
| <input type="checkbox"/> Covers restored and/or laminated/
Couverture restaurée et/ou pelliculée | <input type="checkbox"/> Pages restored and/or laminated/
Pages restaurées et/ou pelliculées |
| <input type="checkbox"/> Cover title missing/
Le titre de couverture manque | <input checked="" type="checkbox"/> Pages discoloured, stained or foxed/
Pages décolorées, tachetées ou piquées |
| <input type="checkbox"/> Coloured maps/
Cartes géographiques en couleur | <input type="checkbox"/> Pages detached/
Pages détachées |
| <input type="checkbox"/> Coloured ink (i.e. other than blue or black)/
Encre de couleur (i.e. autre que bleue ou noire) | <input checked="" type="checkbox"/> Showthrough/
Transparence |
| <input type="checkbox"/> Coloured plates and/or illustrations/
Planches et/ou illustrations en couleur | <input type="checkbox"/> Quality of print varies/
Qualité inégale de l'impression |
| <input type="checkbox"/> Bound with other material/
Relié avec d'autres documents | <input type="checkbox"/> Includes supplementary material/
Comprend du matériel supplémentaire |
| <input type="checkbox"/> Tight binding may cause shadows or distortion
along interior margin/
La reliure serrée peut causer de l'ombre ou de la
distorsion le long de la marge intérieure | <input type="checkbox"/> Only edition available/
Seule édition disponible |
| <input type="checkbox"/> Blank leaves added during restoration may
appear within the text. Whenever possible, these
have been omitted from filming/
Il se peut que certaines pages blanches ajoutées
lors d'une restauration apparaissent dans le texte,
mais, lorsque cela était possible, ces pages n'ont
pas été filmées. | <input type="checkbox"/> Pages wholly or partially obscured by errata
slips, tissues, etc., have been refilmed to
ensure the best possible image/
Les pages totalement ou partiellement
obscurcies par un feuillet d'errata, une pelure,
etc., ont été filmées à nouveau de façon à
obtenir la meilleure image possible. |
| <input checked="" type="checkbox"/> Additional comments: /
Commentaires supplémentaires: [Printed ephemera] [3] p. Docket title page is bound in as last page in book but filmed as first page on fiche. | |

This item is filmed at the reduction ratio checked below/
Ce document est filmé au taux de réduction indiqué ci-dessous.

10X	12X	14X	16X	18X	20X	22X	24X	26X	28X	30X	32X
								✓			

The copy filmed here has been reproduced thanks to the generosity of:

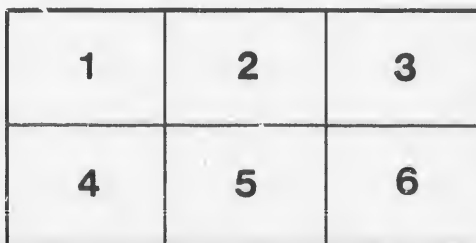
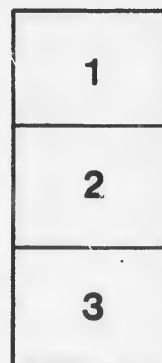
McLennan Library
McGill University
Montreal

The images appearing here are the best quality possible considering the condition and legibility of the original copy and in keeping with the filming contract specifications.

Original copies in printed paper covers are filmed beginning with the front cover and ending on the last page with a printed or illustrated impression, or the back cover when appropriate. All other original copies are filmed beginning on the first page with a printed or illustrated impression, and ending on the last page with a printed or illustrated impression.

The last recorded frame on each microfiche shall contain the symbol \rightarrow (meaning "CONTINUED"), or the symbol ∇ (meaning "END"), whichever applies.

Maps, plates, charts, etc., may be filmed at different reduction ratios. Those too large to be entirely included in one exposure are filmed beginning in the upper left hand corner, left to right and top to bottom, as many frames as required. The following diagrams illustrate the method:



L'exemplaire filmé fut reproduit grâce à la générosité de:

McLennan Library
McGill University
Montreal

Les images suivantes ont été reproduites avec le plus grand soin, compte tenu de la condition et de la netteté de l'exemplaire filmé, et en conformité avec les conditions du contrat de filmage.

Les exemplaires originaux dont la couverture en papier est imprimée sont filmés en commençant par le premier plat et en terminant soit par la dernière page qui comporte une empreinte d'impression ou d'illustration, soit par le second plat, selon le cas. Tous les autres exemplaires originaux sont filmés en commençant par la première page qui comporte une empreinte d'impression ou d'illustration et en terminant par la dernière page qui comporte une telle empreinte.

Un des symboles suivants apparaîtra sur la dernière image de chaque microfiche, selon le cas: le symbole \rightarrow signifie "A SUIVRE", le symbole ∇ signifie "FIN".

Les cartes, planches, tableaux, etc., peuvent être filmés à des taux de réduction différents. Lorsque le document est trop grand pour être reproduit en un seul cliché, il est filmé à partir de l'angle supérieur gauche, de gauche à droite, et de haut en bas, en prenant le nombre d'images nécessaire. Les diagrammes suivants illustrent la méthode.

Memorial

PRESENTED

TO HIS ROYAL HIGHNESS

THE PRINCE REGENT

in Council,

BY

CAPTAIN BECHER, R. N.

Printed by J. Baskin,
Rugby Street, Westminster, London.

To His Royal Highness the PRINCE REGENT
in Council

*The MEMORIAL of the undersigned ALEXANDER BECHER,
Captain in the Royal Navy,*

SHEWETH,

THAT your Memorialist has heard, with much surprise and concern, that a bill of indictment has been found, at York, in Upper Canada, against his son Alexander Bridport Becher, a Midshipman in the Royal Navy, for an alleged malicious conspiracy to destroy the trade of a numerous body of fur-traders of Montreal, called, as your Memorialist believes, the North-West Company.

That, upon inquiring into the circumstances of this extraordinary case, your Memorialist has ascertained that, in the year 1816, his son, then only twenty years of age, had been ordered by Captain Owen of the Royal Navy, (at that time employed by directions from the Admiralty in surveying some of the lakes in Canada,) to proceed to Lakes Huron and Superior, where, in consequence of such order, he continued all the winter, making surveys, and carrying on the requisite geographical and astronomical observations.

That, while thus employed, your Memorialist's son, with the knowledge and sanction of his commanding officer, remained frequently residing with the Earl of Selkirk at Lake Superior, and this circumstance, together with the sentiments of regard entertained for him by his Lordship, was, no doubt, considered by the North-West Company as a sufficient ground to charge him criminally, and to suborn their servants and hirelings as witnesses to support such charge. But your Memorialist is well assured that in place of unlawfully conspiring to injure the trade of any of His Majesty's subjects, his son was at that time diligently and honourably employed in His Majesty's service: and your Memorialist can, on this subject, appeal with confidence to the Lords of the Admiralty, who are in possession of all the surveys, draughts, and observations then taken upon Lake Superior by his son, and that their Lordships have been pleased to approve of the same, and again to send him abroad in His Majesty's ship *Leven*, destined also upon a similar service of a nautical and geographical description.

That your Memorialist, however, has been informed that, at the instance of the said North-West Company, a bill of indictment was preferred in September last, at Sandwich, in the Western District of Upper Canada, against his son, for the said alleged conspiracy, but that the Grand Jury at that place did not find the same to be a true bill. That, shortly afterwards, however, an Act was introduced and hastily passed through the Legislature of that Province, in consequence of which the North-West Company have contrived to prefer another bill of indictment against him, upon the same charge, and supported by the same witnesses,—but brought in another district, where it would not have been cognizable without the passing of the said Act; and that the second bill of indictment, so preferred, has been found by a Grand Jury at York, in Upper Canada, against your Memorialist's son, who is now abroad on public service.

Your Memorialist, therefore, most humbly prays that Your Royal Highness in Council will be pleased to withhold your Assent from the said Act, and that means may be taken to quash the said indictment, and wipe off the wanton and unfounded imputation thus cast upon your Memorialist's son, who has nothing to depend upon for his success in life, but his professional character and conduct,—which your Memorialist hopes he will not be deemed over-presumptuous in asserting, have never, in any shape, or upon any occasion, been reasonably or justly impeached.

And your Memorialist, as in duty bound, will ever pray, &c.

ALEXANDER BECHER.

16th August, 1819.

