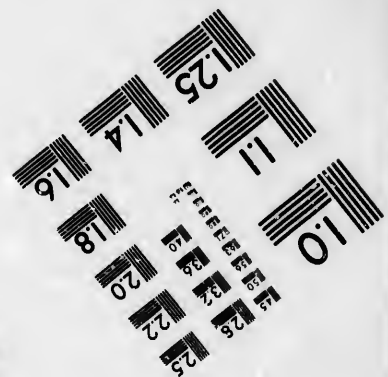
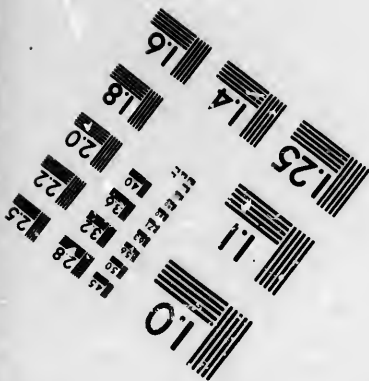
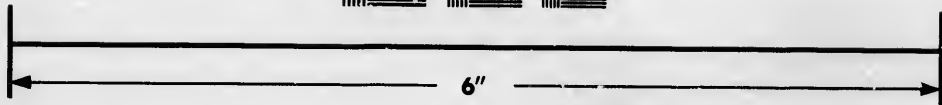
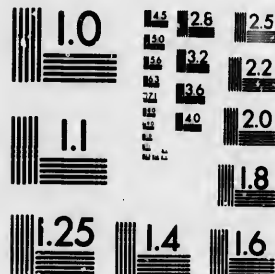


**IMAGE EVALUATION
TEST TARGET (MT-3)**



**Photographic
Sciences
Corporation**

23 WEST MAIN STREET
WEBSTER, N.Y. 14580
(716) 372-4503

**CIHM/ICMH
Microfiche
Series.**

**CIHM/ICMH
Collection de
microfiches.**



Canadian Institute for Historical Microreproductions / Institut canadien de microreproductions historiques

© 1986

Technical and Bibliographic Notes/Notes techniques et bibliographiques

The Institute has attempted to obtain the best original copy available for filming. Features of this copy which may be bibliographically unique, which may alter any of the images in the reproduction, or which may significantly change the usual method of filming, are checked below.

L'institut a microfilmé le meilleur exemplaire qu'il lui a été possible de se procurer. Les détails de cet exemplaire qui sont peut-être uniques du point de vue bibliographique, qui peuvent modifier une image reproduite, ou qui peuvent exiger une modification dans la méthode normale de filmage sont indiqués ci-dessous.

- | | |
|--|--|
| <input type="checkbox"/> Coloured covers/
Couverture de couleur | <input type="checkbox"/> Coloured pages/
Pages de couleur |
| <input type="checkbox"/> Covers damaged/
Couverture endommagée | <input type="checkbox"/> Pages damaged/
Pages endommagées |
| <input type="checkbox"/> Covers restored and/or laminated/
Couverture restaurée et/ou pelliculée | <input checked="" type="checkbox"/> Pages restored and/or laminated/
Pages restaurées et/ou pelliculées |
| <input type="checkbox"/> Cover title missing/
Le titre de couverture manqué | <input checked="" type="checkbox"/> Pages discoloured, stained or foxed/
Pages décolorées, tachetées ou piquées |
| <input type="checkbox"/> Coloured maps/
Cartes géographiques en couleur | <input type="checkbox"/> Pages detached/
Pages détachées |
| <input type="checkbox"/> Coloured ink (i.e. other than blue or black)/
Encre de couleur (i.e. autre que bleue ou noire) | <input checked="" type="checkbox"/> Showthrough/
Transparence |
| <input type="checkbox"/> Coloured plates and/or illustrations/
Planches et/ou illustrations en couleur | <input type="checkbox"/> Quality of print varies/
Qualité inégale de l'impression |
| <input type="checkbox"/> Bound with other material/
Relié avec d'autres documents | <input type="checkbox"/> Includes supplementary material/
Comprend du matériel supplémentaire |
| <input type="checkbox"/> Tight binding may cause shadows or distortion
along interior margin/
La reliure serrée peut causer de l'ombre ou de la
distorsion le long de la marge intérieure | <input type="checkbox"/> Only edition available/
Seule édition disponible |
| <input type="checkbox"/> Blank leaves added during restoration may
appear within the text. Whenever possible, these
have been omitted from filming/
Il se peut que certaines pages blanches ajoutées
lors d'une restauration apparaissent dans le texte,
mais, lorsque cela était possible, ces pages n'ont
pas été filmées. | <input type="checkbox"/> Pages wholly or partially obscured by errata
slips, tissues, etc., have been refilmed to
ensure the best possible image/
Les pages totalement ou partiellement
obscurcies par un feuillet d'errata, une pelure,
etc., ont été filmées à nouveau de façon à
obtenir la meilleure image possible. |
| <input checked="" type="checkbox"/> Additional comments: / [Printed ephemera] [2] p.
Commentaires supplémentaires: | |

This item is filmed at the reduction ratio checked below/
Ce document est filmé au taux de réduction indiqué ci-dessous.

10X	12X	14X	16X	18X	20X	22X	24X	26X	28X	30X	32X
						✓					

The copy filmed here has been reproduced thanks to the generosity of:

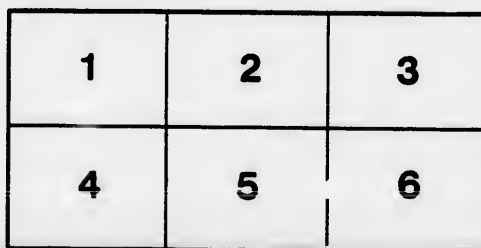
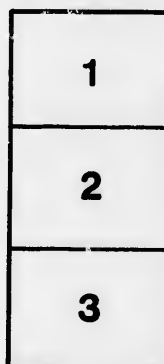
New Brunswick Museum
Saint John

The images appearing here are the best quality possible considering the condition and legibility of the original copy and in keeping with the filming contract specifications.

Original copies in printed paper covers are filmed beginning with the front cover and ending on the last page with a printed or illustrated impression, or the back cover when appropriate. All other original copies are filmed beginning on the first page with a printed or illustrated impression, and ending on the last page with a printed or illustrated impression.

The last recorded frame on each microfiche sheet contains the symbol \rightarrow (meaning "CONTINUED"), or the symbol ∇ (meaning "END"), whichever applies.

Maps, plates, charts, etc., may be filmed at different reduction ratios. Those too large to be entirely included in one exposure are filmed beginning in the upper left hand corner, left to right and top to bottom, as many frames as required. The following diagrams illustrate the method:



L'exemplaire filmé fut reproduit grâce à la générosité de:

New Brunswick Museum
Saint John

Les images suivantes ont été reproduites avec le plus grand soin, compte tenu de la condition et de la netteté de l'exemplaire filmé, et en conformité avec les conditions du contrat de filmage.

Les exemplaires originaux dont la couverture en papier est imprimée sont filmés en commençant par le premier plat et en terminant soit par la dernière page qui comporte une empreinte d'impression ou d'illustration, soit par le second plat, selon le cas. Tous les autres exemplaires originaux sont filmés en commençant par la première page qui comporte une empreinte d'impression ou d'illustration et en terminant par la dernière page qui comporte une telle empreinte.

Un des symboles suivants apparaîtra sur la dernière image de chaque microfiche, selon le cas: le symbole \rightarrow signifie "A SUIVRE", le symbole ∇ signifie "FIN".

Les cartes, planches, tableaux, etc., peuvent être filmés à des taux de réduction différents. Lorsque le document est trop grand pour être reproduit en un seul cliché, il est filmé à partir de l'angle supérieur gauche, de gauche à droite, et de haut en bas, en prenant le nombre d'images nécessaire. Les diagrammes suivants illustrent la méthode.

Mechanics' Institute, St. Johns

FOR A SHORT TIME ONLY

ON WEDNESDAY EVENING, AUGUST 28, 1852

DAY EXHIBITIONS on Wednesday & Saturday Afternoons,

One of the Largest and Best Exhibitions in the World!

INSTRUCTIVE & AMUSING.

OF THE MECHANICAL ARTS.

Admission Free. Tickets 10 Cents.

Doors open at 7 1/2. Exhibitions commence moving at 8.

ENTRANCE AND DEPARTURE, HARBOUR ROAD

REMARKS BY THE COMMITTEE OF THE

HUDSON RIVER

VOYAGE TO DEWANA!

Painted from Original Sketches, by HENRY SEAMAN, JOHN GORDON, and others. The work is a valuable and interesting contribution to the history of the Hudson River, and is well adapted for use in schools and families. It is a beautiful and instructive work, and is well adapted for use in schools and families. It is a beautiful and instructive work, and is well adapted for use in schools and families.

Coasting of Seals, Ducks, &c. on the Hudson River.

MR. C. B. McFARLAND, OF NEW YORK

Author of "The Hudson River," &c.

Coasting of Songs, Duets, Trios and Operatic Gems

MR. C. B. McFARLAND

Law of "Wagh's Italy"

MISS MARIE A. MOORE

From the New York Company

MR. S. SAWTELL

The Celebrated Pianist and Composer, author of "Take me Home to Italy" and other favorite songs, will present

In addition to the already Mammoth Exhibition, will be presented **GIANNI VERALDI** Celebrated and much

LILLIPUTIAN FAMILY



MECHANICAL FIGURES OR ITALIAN PIANO ORGAN

Being a complete set of mechanical figures, to be varied at each exhibition

will appear each Evening, to be varied at each Exhibition

(SEE THE OTHER SIDE.)

Programme of Places, Incidents, Scenery and Characters.

SECTION FIRST. HUDSON RIVER.
ILLUSTRATING IN ITS PROGRESS IRVING'S STORY OF RIF VAN WINKLE, the GENIUS of the HUDSON
The Opening Scene in this Illustrated Tour, presents

A VIEW OF SLEEPY HOLLOW;

with the Genius, alias RIF VAN WINKLE, just ascending from his father's long nap of twenty years; approaching TIVOLI, we pass the REDHOOK and RHYNECK and minutely displayed—the latter a place of many a dark and fearful night; as we advance we soon arrive at the **WINDMILL**, the scene of the famous legend; we then pass the **TOWN OF NEW WASHINGTON**, FISHKILL LANDING, next comes the sound of the **STEAMER HUDSON** arouses him from his repose.

SECTION SECOND. HUDSON RIVER.

Oppose with a view of: **PESHKILL, HOLLAND POINT, SUNG-SING**
Are seen here; when the noted place of **PARDY TOWN** appears in full view, the scene is very interesting; many interesting scenes

We are greeted with the **MERRY-METING** and a sketch of **POMPEY** the **VIOLINISTS**; the **TOWN OF HASTINGS**; the **STEAMER HUDSON** pass in view; when we arrive at **YONKERS**, here we meet with the Mynheer, and his reception, which is by no means flattering; moving onward **FORT INDEPENDENCE AND FORT WASHINGTON**, places rich in beauty and Historical interest, are seen; as we approach the

“LONDON OF AMERICA.”

Then follows a charming sketch of a **FARM HOUSE AND BARN YARD**, with its people, Domestic Animals and surrounding foliage, one of the most beautiful scenes imaginable; and immediately following this, we have a view of the **VILLAGE OF HAVEN**, again another interesting scene; here we meet with poor **RIF VAN WINKLE**, who creates great interest and admiration on account of his political views; this is one of the drollist Pictures on Canvas, and conveys a better idea of the character and opinions of the old Dutch

HARBOR AND CITY OF NEW YORK,

With its immense shipping; the **NAVY YARD**, the **BATTERY**, **Docks and Fortifications**; having examined the Commercial advantages of this Great Metropolis, we close the Second Section.

SECTION THIRD. ATLANTIC

Embarking again upon the voyage, we leave **NEW YORK BAY** and enter the **NARROWS**, passing the Harbor and **CITY OF BROOKLYN**, we meet with the **ALBATROSS** at full speed, forming a very imposing Nautical Scene. Next the **FORTS, RICHMOND & FAYETTE** Schooners waiting beneath the romantic cities and villages that dot its borders, (as Fort Richmond fires her sunset gun) we arrive upon the **BROAD ATLANTIC**. With all around us one broad water; and all above us one blue sky. The water is calm, and all around light upon the many craft which we meet, with on the sea, a beautiful playfulness of the waves, gradually, an angry sea is to be seen

A TERRIFIC STORM AT SEA,

as we approach with all its characteristic phenomena; agitation of the waves; clouds which by degrees obscure the sky—the howling of the sea is heard amid the deep reverberation of thunder—vivid flashes of lightning and torrents of rain—vessels bearing against the tempest—struck by lightning and finally engulfed in the deep, with Seamen endeavoring to save themselves on rafts, Planks, Wreck, &c., altogether forming a faithful representation of Nature in one of her most wonderful aspects (hundreds of admiring spectators are nightly held in breathless attention by this faithful and awe inspiring representation of elementary war, which is so perfectly portrayed that the spectator forgets the vicinity of terra firma, involuntarily enters into the fears and perils of the wave-tossed Mariner) as the storm subsides, the

ROYAL MAIL STEAMER

appears, endeavouring to save the crew of the injured ship; and as the rosy tints of morning approach, a beautiful fog veil is given to a

In which will be introduced a representation of THE RISING SUN!

This Scene is presented at 4 o'clock in the morning, in the summer season, and from that hour until the sun reaches the highest point of the horizon, the various effects of light are brought to view—the lingering darkness disappears—the clouds change, both in form and color—the ocean slowly passes into brightness—and all the gradations of light and shade are observable without their being the slightest pretension in what manner these changes are produced.

SECTION FOURTH. IRELAND

In which we see the representation of the RISING SUN!

This scene is presented to you in the morning, in the summer season, and then that hour until the sun reaches the highest point of the horizon, the various effects of the sun's brightness to view the lingering darkness disappears—the clouds change, both in form and color—the ocean slowly rises into high water, and all the gradations of light and shade are observable without their being the slightest objection in what manner these changes are produced.

SECTION FOURTH. IRELAND.

Containing Grand Serial Tableaux of all places of note throughout the island, among which are the following:

Black Rock Castle, **Waterford**, **Limerick**, **Galway**, **Dublin**, **London**, **Paris**, **River Sure**, **The Dances**, **Cromwell's Army**, **of the**, **Bridge**; **Stores**, **Father Matthew** and **the Pledge**;

THE FOUR COURTS, **Irish Aristocracy**, **Union with England**, **WITHERS**, **RICHMOND BRIDGE**, **WELLINGTON MONUMENT**, **WELLINGTON'S BRIDGE**, **the River Shannon**, **its Scenery**, **advantages**, &c.

THE GIANT'S CAUSEWAY!

Fin McCant, **Benjamin**; **Earles of Antrim**; **CAVE IN THE GIANT'S CAUSEWAY**; its secret recesses; purposes used for, and **Ships of the Great East**; **Mountains**, piercing the sky, clear as the limpid waves that wash their base and reflect their grandeur in all the splendor of the reality; **ROSS CASTLE**; **O'Donoghue**; **Cromwell** and the armies of Parliament; **VALE OF OVOCO**; meeting of the waters, **Rivers of Avonberry** and **Avonmoor**; **SEVEN CHURCHES OF CLANMACOISE**, with their ancient **Cross and Round Tower**; **ABBY OF INISFALL**; **Lake of Kalarney**; **O'Donoghue**, &c., &c.

BOWER OF BEAUTY

- OR, LIFE OF THE FINEST AND MOST BEAUTIFUL DANCERS, who are presented by a variety of dances, to be varied each Exhibition.
- MAGNIFICENT CHINESE COURT DANCING, in the style of the Grand Palace of Peking.
- ITALIAN BOLETTI, in the style of the Grand Palace of Peking.
- COLLEGE DANCING, in the style of the Grand Palace of Peking.
- SPANISH DANCING, in the style of the Grand Palace of Peking.
- WREATHING, in the style of the Grand Palace of Peking.
- COMIC DANCING, in the style of the Grand Palace of Peking.
- NEGRO DANCING, in the style of the Grand Palace of Peking.
- SARLORE DANCING, in the style of the Grand Palace of Peking.
- FOUR GAMES, in the style of the Grand Palace of Peking.
- YANKIE DODDER, in the style of the Grand Palace of Peking.
- HIGHLAND FLING, in the style of the Grand Palace of Peking.
- MAZURKA GRIMALDI'S, in the style of the Grand Palace of Peking.

BILLY BUTTON'S TRIP TO HAVREPORE!

Billy Button, the Man of Misfortune. Siglor Hubards (Journalist, the Man of Grief). London's Press—No. 10 Printing Building, corner of Stockton and Howard Streets.

not deacidified
Programs
Box 2, pkt 6, item 2
shelf 21

