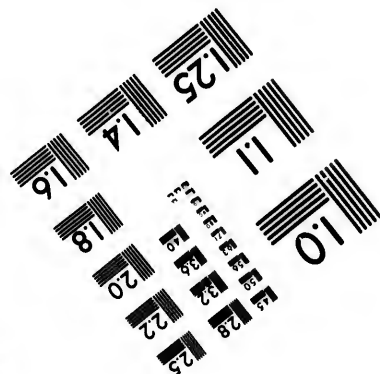
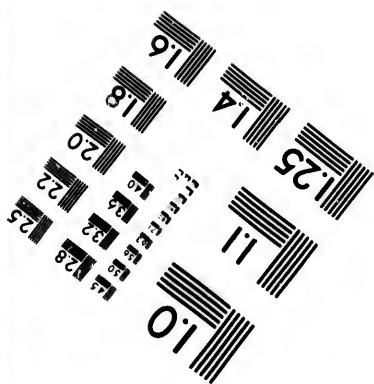
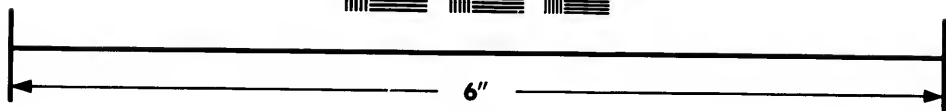
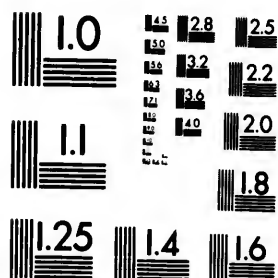


**IMAGE EVALUATION
TEST TARGET (MT-3)**



**Photographic
Sciences
Corporation**

23 WEST MAIN STREET
WEBSTER, N.Y. 14580
(716) 872-4503

1.5 1.8 2.0 2.2 2.5
2.8 3.2 3.6 4.0

**CIHM/ICMH
Microfiche
Series.**

**CIHM/ICMH
Collection de
microfiches.**



Canadian Institute for Historical Microreproductions / Institut canadien de microreproductions historiques

1.0 1.5 2.0 2.5 3.0 3.5 4.0

© 1982

The copy filmed here has been reproduced thanks to the generosity of:

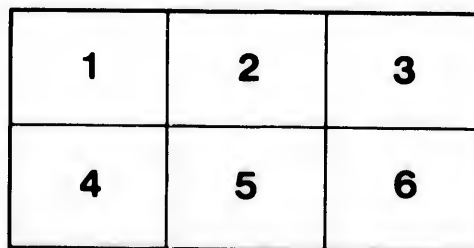
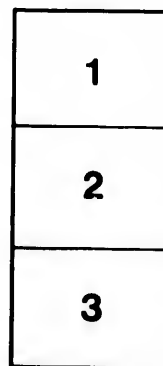
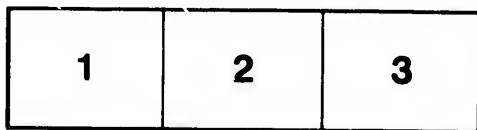
Library Division
Provincial Archives of British Columbia

The images appearing here are the best quality possible considering the condition and legibility of the original copy and in keeping with the filming contract specifications.

Original copies in printed paper covers are filmed beginning with the front cover and ending on the last page with a printed or illustrated impression, or the back cover when appropriate. All other original copies are filmed beginning on the first page with a printed or illustrated impression, and ending on the last page with a printed or illustrated impression.

The last recorded frame on each microfiche shall contain the symbol \rightarrow (meaning "CONTINUED"), or the symbol ∇ (meaning "END"), whichever applies.

Maps, plates, charts, etc., may be filmed at different reduction ratios. Those too large to be entirely included in one exposure are filmed beginning in the upper left hand corner, left to right and top to bottom, as many frames as required. The following diagrams illustrate the method:



L'exemplaire filmé fut reproduit grâce à la générosité de:

Library Division
Provincial Archives of British Columbia

Les images suivantes ont été reproduites avec le plus grand soin, compte tenu de la condition et de la netteté de l'exemplaire filmé, et en conformité avec les conditions du contrat de filmage.

Les exemplaires originaux dont la couverture en papier est imprimée sont filmés en commençant par la première page et en terminant soit par la dernière page qui comporte une empreinte d'impression ou d'illustration, soit par le second plat, selon le cas. Tous les autres exemplaires originaux sont filmés en commençant par la première page qui comporte une empreinte d'impression ou d'illustration et en terminant par la dernière page qui comporte une telle empreinte.

Un des symboles suivants apparaîtra sur la dernière image de chaque microfiche, selon le cas: le symbole \rightarrow signifie "A SUIVRE", le symbole ∇ signifie "FIN".

Les cartes, planches, tableaux, etc., peuvent être filmés à des taux de réduction différents. Lorsque le document est trop grand pour être reproduit en un seul cliché, il est filmé à partir de l'angle supérieur gauche, de gauche à droite, et de haut en bas, en prenant le nombre d'images nécessaire. Les diagrammes suivants illustrent la méthode.

76
972.16
W482

XLVII.—Notice regarding the Map of Mackenzie's River by Mr W. F. WENZEL, of the North-West Fur Company.

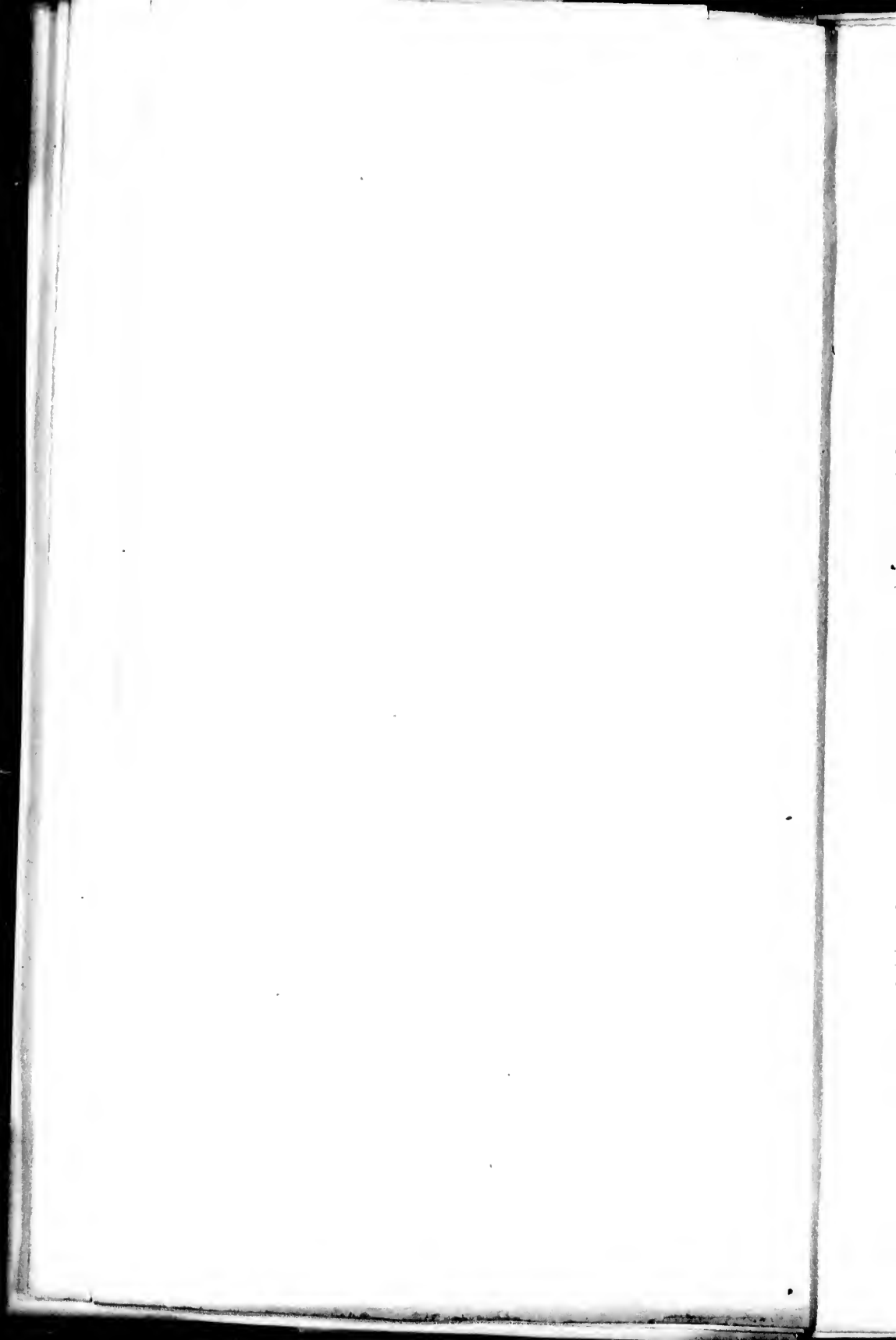
(Read 22d March 1823.)

THIS valuable map was transmitted to Professor JAMESON, for publication in the Society's Memoirs, and is the most satisfactory delineation of the celebrated Mackenzie's River hitherto presented to the public. Besides the details in the map itself, others of importance are contained in the article "On the attempts to reach the Sea by Mackenzie's River," published in the first part of the present volume of Memoirs. In addition to these the following notices have been communicated.

Horn Mountain Indians, are a tribe of the Dog-rib nation. They speak the Chepewyan language, amount to about 600 souls, and inhabit the country between Great Bear and Slave Lakes.

Hare Indians speak a dialect of the Chepewyan, but their number is unknown.

Loucheux Indians perforate the septum of their nose, resemble the Esquimaux in their dress, and are supposed to speak a dialect of the Esquimaux language. Number unknown.



Rocky Mountain Indians. Number about 160 souls,—speak a dialect of Chepewyan.

Strong-Bow Indians. They frequent the country from Fort Nelson to the forks of Mackenzie's River, and muster about 280 souls. They speak Chepewyan, as do all those tribes that are known in that quarter, except the Loucheux.

Ranges of Mountains.—The natives speak of there being eleven distinct ranges of the Rocky Mountains, which lie parallel to each other, and have a general direction from north to south.

Edible Earth.—An edible earth is found below the forks, which is described as unctuous clay, which the Indians eat from choice.

Meteoric Stone.—The Strong-Bow Indians observed a meteoric stone, several feet in diameter, to fall from the sky. It had a bad smell, and its fall was attended with a report like thunder. The year is unknown, but it was since 1795, when the traders first established themselves there.

Petrifying Spring.—There is a petrifying spring about forty miles above the forks. The petrifications are as white as snow, and the spring issues from a stone of a light-grey colour, which is used for grinding tools, and is supposed to be a kind of calcareous sandstone. The river cuts this bed of stone into two, and produces a small cascade.

Flints or Calcedonies.—Above the Montagne de Bouleau, on the Riviere aux Liards, there are many stones described as flints, but which appear, in general, rather to be varieties of calcedony; the colours are black, blue, milk-white, and veined, clouded and striped; the blackish varieties are softer than the others; and all have a thin yellowish coat or crust. Flint or calcedony is found in all parts of Mackenzie's river, and is used by the natives to tip their arrows with.

