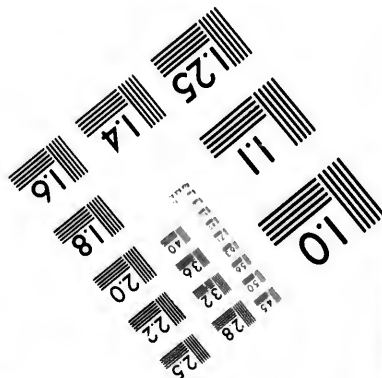
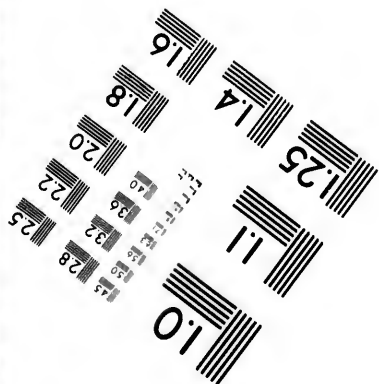
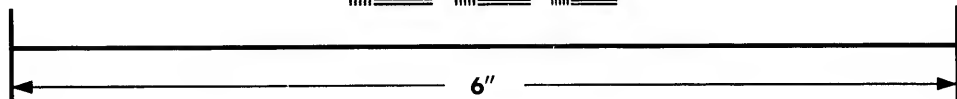
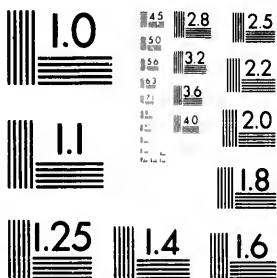


**IMAGE EVALUATION
TEST TARGET (MT-3)**



**Photographic
Sciences
Corporation**

23 WEST MAIN STREET
WEBSTER, N.Y. 14580
(716) 872-4503

25
22
20
18

**CIHM/ICMH
Microfiche
Series.**

**CIHM/ICMH
Collection de
microfiches.**



Canadian Institute for Historical Microreproductions / Institut canadien de microreproductions historiques

10

© 1981

Technical and Bibliographic Notes/Notes techniques et bibliographiques

The Institute has attempted to obtain the best original copy available for filming. Features of this copy which may be bibliographically unique, which may alter any of the images in the reproduction, or which may significantly change the usual method of filming, are checked below.

L'Institut a microfilmé le meilleur exemplaire qu'il lui a été possible de se procurer. Les détails de cet exemplaire qui sont peut-être uniques du point de vue bibliographique, qui peuvent modifier une image reproduite, ou qui peuvent exiger une modification dans la méthode normale de filmage sont indiqués ci-dessous.

- Coloured covers/
Couverture de couleur
- Covers damaged/
Couverture endommagée
- Covers restored and/or laminated/
Couverture restaurée et/ou pelliculée
- Cover title missing/
Le titre de couverture manque
- Coloured maps/
Cartes géographiques en couleur
- Coloured ink (i.e. other than blue or black)/
Encre de couleur (i.e. autre que bleue ou noire)
- Coloured plates and/or illustrations/
Planches et/ou illustrations en couleur
- Bound with other material/
Relié avec d'autres documents
- Tight binding may cause shadows or distortion along interior margin/
La reliure serrée peut causer de l'ombre ou de la distortion le long de la marge intérieure
- Blank leaves added during restoration may appear within the text. Whenever possible, these have been omitted from filming/
Il se peut que certaines pages blanches ajoutées lors d'une restauration apparaissent dans le texte, mais, lorsque cela était possible, ces pages n'ont pas été filmées.
- Additional comments:/
Commentaires supplémentaires:

- Coloured pages/
Pages de couleur
- Pages damaged/
Pages endommagées
- Pages restored and/or laminated/
Pages restaurées et/ou pelliculées
- Pages discoloured, stained or foxed/
Pages décolorées, tachetées ou piquées
- Pages detached/
Pages détachées
- Showthrough/
Transparence
- Quality of print varies/
Qualité inégale de l'impression
- Includes supplementary material/
Comprend du matériel supplémentaire
- Only edition available/
Seule édition disponible
- Pages wholly or partially obscured by errata slips, tissues, etc., have been refilmed to ensure the best possible image/
Les pages totalement ou partiellement obscurcies par un feuillet d'errata, une pelure, etc., ont été filmées à nouveau de façon à obtenir la meilleure image possible.

This item is filmed at the reduction ratio checked below/
Ce document est filmé au taux de réduction indiqué ci-dessous.

10X	12X	14X	16X	18X	20X	22X	24X	26X	28X	30X	32X
<input type="checkbox"/>	<input type="checkbox"/>	<input type="checkbox"/>	<input type="checkbox"/>	<input type="checkbox"/>	<input type="checkbox"/>	<input type="checkbox"/>	<input type="checkbox"/>	<input type="checkbox"/>	<input type="checkbox"/>	<input type="checkbox"/>	<input checked="" type="checkbox"/>

The copy filmed here has been reproduced thanks to the generosity of:

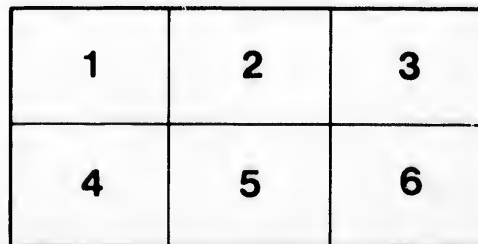
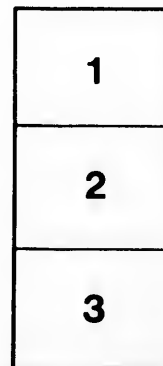
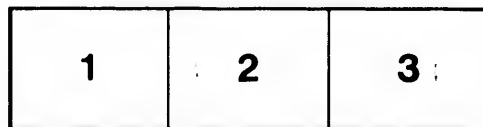
Library Division
Provincial Archives of British Columbia

The images appearing here are the best quality possible considering the condition and legibility of the original copy and in keeping with the filming contract specifications.

Original copies in printed paper covers are filmed beginning with the front cover and ending on the last page with a printed or illustrated impression, or the back cover when appropriate. All other original copies are filmed beginning on the first page with a printed or illustrated impression, and ending on the last page with a printed or illustrated impression.

The last recorded frame on each microfiche shall contain the symbol \rightarrow (meaning "CONTINUED"), or the symbol ∇ (meaning "END"), whichever applies.

Maps, plates, charts, etc., may be filmed at different reduction ratios. Those too large to be entirely included in one exposure are filmed beginning in the upper left hand corner, left to right and top to bottom, as many frames as required. The following diagrams illustrate the method:



L'exemplaire filmé fut reproduit grâce à la générosité de:

Library Division
Provincial Archives of British Columbia

Les images suivantes ont été reproduites avec le plus grand soin, compte tenu de la condition et de la netteté de l'exemplaire filmé, et en conformité avec les conditions du contrat de filmage.

Les exemplaires originaux dont la couverture en papier est imprimée sont filmés en commençant par le premier plat et en terminant soit par la dernière page qui comporte une empreinte d'impression ou d'illustration, soit par le second plat, selon le cas. Tous les autres exemplaires originaux sont filmés en commençant par la première page qui comporte une empreinte d'impression ou d'illustration et en terminant par la dernière page qui comporte une telle empreinte.

Un des symboles suivants apparaîtra sur la dernière image de chaque microfiche, selon le cas: le symbole \rightarrow signifie "A SUIVRE", le symbole ∇ signifie "FIN".

Les cartes, planches, tableaux, etc., peuvent être filmés à des taux de réduction différents. Lorsque le document est trop grand pour être reproduit en un seul cliché, il est filmé à partir de l'angle supérieur gauche, de gauche à droite, et de haut en bas, en prenant le nombre d'images nécessaire. Les diagrammes suivants illustrent la méthode.

ails
du
difier
une
page

rata
o

elure,
à



32X

unpaged. 15 pls (print. on back side)

SEASON 1891-2.

British Columbia

A DESCRIPTION

—OF ITS—

Natural Resources,

Commercial Advantages,

LEADING MERCANTILE AND BUSINESS HOUSES.

VICTORIA, B. C. PUBLISHED BY PHIL R. SMITH.

(714)
A 1114
S653

PREFACE.

The publishers of this work experience pleasurable pride in submitting it to the travelling public, especially those whom it may serve to entertain and instruct on board ocean steamers which may have connection with the cities of British Columbia. These cities of commerce deserve to be introduced by every possible means that may be calculated to bring them to extended prominence. Victoria, Vancouver, New Westminster and Nanaimo, are, as will readily be perceived by the reader, the places here referred to.

"Custom that does still appear
An universal influence—
And makes things right or wrong appear,
Just as they do her livery wear."

—Hudibras.

It is meant by the statements or information contained in these pages, to pursue strictly the idea of accuracy—not that founded on passing popularity, but on time honored custom, which shall have an universal influence upon those who may do the publishers the honor to read them. The art of photography, it will be conceded, is not by any means imperfectly developed in the towns which are portrayed by its assistance. The photograph is a conscientious medium, vastly superior to any effort which the wood cut is capable of, with its faults or distortions marring the scene, which would be otherwise beautiful, if only faithfully rendered. A leading object—which has been studiously kept in view by the publishers of this album, is to make its pages pleasing as well as strictly reliable, so that during the sojourn of the tourist or visitor, such association shall be called into existence as will live in their memory, with credit to ourselves, and which shall abide with them pleasantly until they come again, or it may be permanently find a home amongst us. The existing limited knowledge of Western British Columbia will, it is trusted, be widened out in the process of the near future in some degree by these pages.

"Where western gales eternally reside,
And all the seasons lavish all their pride."

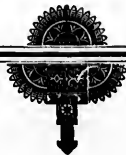
No one can dispute the application of these lines to the pictures offered in this album. That they lack the charm of color surrounding the originals on which the seasons truly "lavish all their pride" is a matter for regret and one which should not have obtruded here had not science been capable of solving the question. With these few remarks we will now introduce the reader to the Cities of British Columbia.

British Columbia.

British Columbia has an area of 390,000 square miles, or nearly 250,000,000 of acres, is bounded on the north by the 60th parallel, east by the Rocky Mountains, south by the 49th parallel, and on the west by the Pacific Ocean. Included within its limits are the islands of Vancouver, Queen Charlotte group, and many smaller ones nearly all of which are well adapted for settlement. A better idea of the vast extent of this empire Province may be gained by the reader, when he is informed that it is three times as large as Great Britain and Ireland, is greater in extent than California, Oregon and Washington combined, or the provinces of New Brunswick, Nova Scotia, Prince Edward Island and Manitoba collectively. It is undoubtedly the richest mineral country in the world. The range of mountains which traverse it from north to south for 750 miles are analogous to those which gave such world wide fame to California as the golden State of the Union. As numerous bodies of gold and silver have been discovered, the croppings of which have been proved by assays to be remarkably rich, it is reasonable to expect that with the advent of capital and cheap transportation, quartz mining will be one of the most profitable industries in the country. Since 1858 placer mining has been successfully prosecuted throughout the province, and the total yield of gold has been over \$55,000,000. The annual output for 1890, amounted to \$600,000. Platinum has been frequently met with in the gold placers, and at Granite Creek in the Similkameen District, some 4,000 ounces of that metal in combination with osmium were secured during the years 1887 and 1888. Copper ore in considerable quantity and native copper have from time to time been found in various parts of the Province, but hitherto hardly any mining for that metal has been attempted. In connection with the mining of precious metals, the output of copper from British Columbia is likely before long to become considerable, and it is only a question of time till copper ores shall be worked as such. Magnetic iron ores of good quality have been found in several localities, and the ores of Texada Island have been worked to a limited extent, present shipments aggregating 10,000 tons per annum. Coal constitutes the industry of the Province at the present time, being first discovered in 1837. Since that date 5,000,000 tons have been extracted from the Vancouver Island coal measures, the output of the various mines during the past year totalled a value of no less than two and a half million of dollars and employing about 8000 men. In point of production, the fisheries rank next to that of minerals. The salmon of British Columbia have acquired the widest reputation of any product of the Province, and may be considered at present the best advertising medium of the country, penetrating as it does into regions where the source of its origin is otherwise totally unknown. There are four varieties found within the waters of British Columbia, of which there are but three that have any commercial value. The most valuable fish next to the salmon at present, is the dog fish, the value of which consists in the excellent oil which they yield, and which is extensively used throughout the Province and the interior of Canada, for lubricating purposes. The high tariff practically excludes it from the United States, where a mineral oil is chiefly used for the same purpose. The Black Cod (Skil) is found in large numbers off the banks of Queen Charlotte Islands, it is a deep water fish and weighs up to 20 or 30 pounds, is of fine flavour, and only awaits an introduction into the commercial marts of the world to command a large sale. Rock Cod and Red Cod are found in large numbers all over the coast, and Halibut is plentiful up to 600 pounds weight, identical with the British variety. Sturgeon is only used as a fresh fish, weighs up to 1000 pounds, and is considered good eating. The Oolachans are a rich little fish of fine flavour, and would make a capital substitute for sardines when packed in the same manner. They are found in unlimited quantities and yield an oil, which besides being an excellent luminant, contains medicinal properties of a high order, and is superior in this respect to Cod Liver Oil for pulmonary affections. Whiting, Smelts, Herring, Capelin, Trout, Anchovy and Bass, are all first-rate pan fish, and exist in large quantities. The entire coast abounds in Shellfish, of which Crabs, Prawns, Shrimps, Clams, Cockles and Oysters, form an important part. The action of the Imperial Government in declaring the Behring Sea a closed sea for one year, pending arbitration, will have an adverse effect upon the sealing industry, which has attained large proportions within the past few years, the annual yield of which was from \$200,000 to \$300,000, employing some 35 schooners and about 500 men. The lumbering interest of British Columbia has also attained considerable proportions, the principal markets for which being South America, Australia, China, Japan, and throughout the Northwest and Manitoba. The average cut of timber on the Island of Vancouver and the Mainland is from 20,000 to 500,000 feet per acre. Comparing this with the eastern lumbering districts of Canada and the United States with their average of

9,000 to 15,000 feet per acre, will readily show the reader the immense resources of this Province in this particular. The growth of the forest trees upon the northwest shores of the Pacific has always excited the surprise of travellers. The Douglas Fir, attaining a height of over 300 feet, the circumference of the largest specimens six feet above the ground, has been found to range from 30 to 50 feet. The Cedar attains a girth greater than even that of the Douglas Fir, specimens have been measured from 60 to 80 feet in circumference, several feet above the ground. It is chiefly employed for fine dressed lumber, doors, frames, sashes, etc. The veining is very beautiful, which renders it very well adapted for all interior work, and is now being used in Eastern Canada and the United States for that purpose. The Hemlock grows in some localities to goodly proportions, the wood of which being used for building purposes, and the bark of great value in tanning. The Oak, Spruce, Cottonwood, Maple, Alder and Cypress grow in great abundance, and are extensively used in the manufacture of furniture. With such an abundance of lumber, it is not a little surprising that the manufacture of paper from mechanical wood pulp has never been attempted in this Province. With a large consumption and an increasing demand for the cheaper grades of paper, the facilities for cheap production from the raw material and the prospect of a good export trade should place British Columbia the first on the list as a paper producing country. It is not our intention with such limited space to enter into a description of the various methods of the farming of a new country, but it must be clearly understood by emigrants that they have the choice of two distinct kinds of agricultural employment—farming or clearing. If they wish to prosecute the former they must purchase land upon which sufficient improvements have been made to enable them to work at once, and must take into consideration such questions as the vicinity of a good market and the facilities for handling their crops at least expense. In this case it will be found generally that the best policy is to be contented with a moderate sized farm, in a good neighborhood at a relatively high price, rather than a much larger property at a lower figure, without the same advantages of market. If, however, their circumstances or inclination should induce them to prefer the alternative of clearing rather than cultivating, with a view of enhancing the value of Crown lands for future sale, they must be prepared to face a life of isolation and hard labor for some years, and they should take into consideration prospective government or corporation improvements which have the effect of greatly bettering their position as regards market facilities, and correspondingly enhancing their holding at an early date. The prospects for successful farming depend like those of every other trade upon supply and demand. The demand must be shown to be a good one, and the capacity for supplying that demand must be proved to be sufficient to insure a good profit. While in the remote districts of this Province, which must be borne in mind, is one-third larger in area than the whole German Empire, the demand for farm produce is naturally at present very limited, wherever there has been any tendency towards town population, it greatly exceeds the supply. In all the cities of the coast, farm produce is extraordinarily high in price, and large quantities of eggs, butter, vegetables, fruits, poultry and breadstuffs are imported. A few words may be necessary to convey a just impression of the nature of supply. Speaking in general terms, there are three areas of cultivated farming lands: the Vancouver Island districts, the Fraser River district and the interior district of Okanagon. The first of these include all lands lying within what may be called possible range of the Victoria and Nanaimo markets. To convey some idea of this, it may be stated that over 70,000 acres have been occupied in the immediate neighborhood of Victoria alone—that is to say 70,000 acres have been considered worth purchase for agricultural purposes, and allowing 10,000 acres of this to be unfit for cultivation, there would be still 60,000 capable of producing crops. The circumstances which attend farming on the Fraser are similar in many respects to those of the Island, but it may be said that on the average the land is better and less mixed in quality. The lands of the Delta have long been known as unexcelled for fertility of soil. Enormous crops of hay can be raised upon dyked lands with very little cultivation, and roots of all sorts grow to a size which is almost beyond belief. There are in New Westminster district alone about 200,000 acres of land, upon which improvements have been made, and a very large proportion of these is capable of a high degree of cultivation. Further 500,000 acres may be added to the above for land situated within what are called the Municipalities, which are adjacent districts, each possessing its own local authorities and controlling its own affairs. The Okanagon is a comparatively new district of great beauty, fertility and almost unlimited possibilities, is being placed within reach of a market by the new Shuswap and Okanagon Railway and lake navigation. This district may be described as a belt of land extending from the shores of the great Shuswap lake in a southerly direction to the boundary line between British Columbia and the United States. For many years the value of the land has been recognized and large cattle ranches and grain farms have been carried on by their enterprising owners, and it is only quite recently that the capabilities of the district for mixed and fruit farming have been fully realized. The railway which joins the Canadian Pacific at Sicamous, will render accessible some 400,000 acres of most excellent land in a country of peculiar beauty and healthfulness of climate. As regards this latter point, it may be well to remind the emigrant that there is no part of the American continent which so nearly compares with the best climate of

motherland as British Columbia. It is frequently a matter of surprise with visitors from Eastern Canada, how great a resemblance exists, and how coming into the temperate regions of this favored Province seems almost like going home to the old country, the balance is indeed much in favor of the new one, the seasons being very much more certain. It is rarely that a crop cannot be harvested in good condition, such a contingency having arisen but once in the past fifteen years. Before leaving this subject, a word or two about cattle raising may not be out of place. British Columbia has for many years past imported great quantities of cattle from Oregon and Washington. With hundreds of miles of the finest pasture land in the world still unoccupied, the facilities for raising stock presented by this Province are unequalled, and as it is readily perceived, there is a profitable market awaiting all that can be raised. The climate is of the character best calculated to bring beef to the greatest possible state of perfection, and at the earliest time. The winters are not sufficiently severe to be detrimental, and there is no fear that the growth of the animals will be checked by disastrous droughts in summer. The rolling hillsides of the eastern slope of the coast range and the many similar table lands found through this elevated region are clothed with a natural grass of the most nutritious qualities. To this may be added the easily managed and perhaps the most profitable of all stocks—sheep. There is always a good demand for sheep with the butcher within the Province, and now that communication with the interior has been made, all wool produced will be taken by the mill at such rates as will leave a profitable margin to the grower. Of other industries and openings for which the country is particularly adapted, mention may be made of the fruit industry. British Columbia has proved herself capable of growing the finest fruits, of which [pears, plums, cherries, apples, and in the interior, peaches, grapes and melons grow in the greatest abundance, while the small fruits such as raspberries, blackberries, cranberries, currants, gooseberries, strawberries, and the numerous wild varieties grow to perfection and with little care or attention. Experiments which have been made on the Mainland, Lillooet and Yale districts, amply demonstrate the fact that such fruits as the peach, grape, melon, and others that require a mild, even temperature, would grow equally as well there as in the favored fruit growing sections of California, and the hearty varieties of fruit grow equally well all over the coast. At the present time large shipments of fruit and vegetables are imported from California, when this is essentially a fruit growing country, well able to grow her own supplies and have an abundance for export. The canning and drying of fruits could be made a most profitable one, for with the exception of the orange and lemon, the fruits of British Columbia surpass those of California in quality and quantity. There is an unlimited market for both fresh and canned fruits in the Northwest and throughout Canada, and in connection with vegetables, this industry is capable of great expansion. What has been said of fruits might also be said of canned meats, and with the stocking of large ranges with cattle, canning would inevitably form an important feature as well as a very profitable one, judging from the large profits made in this direction. Another important industry, and particularly so at this juncture, now that the fisheries of France are almost exhausted, is the sardine fishery. Large quantities of this fish have been found all over the coast, and this with the oolachan, which very much resembles it, and which are sold in season at the rate of 25 cents a bucket, would amply repay any competent person who engaged in the canning of them. Tobacco culture is another industry that has been tried on the Mainland in a small way and with good results, undoubtedly the districts of Yale and Lillooet would afford a proper climate or condition, and is well worthy of consideration. Clams have been canned with great success, and an unlimited supply of which is found throughout the coast line of British Columbia. Oysters could be made profitable by the care and cultivation of beds, the native oyster, although smaller than the imported, have a more delicious taste and command a better sale. Lobsters have been found in small numbers in certain localities, and appearances indicate these waters as a most favorable locality for their production. Undoubtedly it would prove a successful venture in the importing and stocking of a large number on this coast. We have mentioned but a few of the resources of this Province, which are practically speaking dormant at the present time, but energy and capital have shown what can be done in the lumbering and coal interests—it has also shown what magnitude salmon canning could attain in competent hands, and points to the golden future with assurances of success and the better development of a country, who, in natural wealth and resources, is without a rival on the continent, and whose equal is yet to be found.





The cut on the opposite page shows the magnificent Saw Mill,
belonging to and controlled by the

MacLAREN ROSS LUMBER Co., Ltd

which is beautifully situated on a bay of the Fraser River,
at a place called Millside, about three miles East of New Westminster, B. C.

The principals of this institution are well known lumbermen of the East, who have spared no expense in making this a complete mill, as regards economy in labor and lumber during the course of manufacturing, and that their efforts have been crowned with success can only be demonstrated by seeing the mill in operation.

The working of the different devices by means of compressed air and steam for elevating and transferring the immense timbers of this coast, is well worthy the inspection of all lumbermen, and is a source of interest to the novice as well.

The large band mill here erected, has been in operation for some time and proves beyond a doubt that it is the coming saw. Boards forty inches wide, one inch thick and thirty feet long and even in cut throughout, have been recently taken off large Douglas Fir logs by means of this saw.

This large mill is 455. x 72 ft., with two wings 65. x 72 ft. and 65. x 51 ft. and is furnished with power by seven engines, which are supplied with steam through pipes leading from ten large steel boilers, located in a stone boiler-house 40. x 72 ft., about twenty feet from centre of the mill.

The Company own, in connection with their mill, large tracts of the finest timber in British Columbia, consisting of Douglas Fir, Cedar and Cypress, which with their modern mill, enables them to place lumber on the market of good quality, well sawn and at the lowest prices.





THOMPSON

MACLAREN ROSS SAW MILL, NEW WESTMINSTER, B. C.

PHOTO. N. WEST.





PHOTO. VICTORIA.

PIONEER STEAM COFFEE AND SPICE MILLS, VICTORIA.

MAC-MUNN

Shotbolt's Balsam of Aniseed So Celebrated for its Relief of COUGHS and COLDS.

PREPARED ONLY BY THOS. SHOTBOLT, Dispensing Chemist, Johnson St., VICTORIA, B. C.

STEMLER & EARLE,

ESTABLISHED 1875.

Pioneer Steam Coffee & Spice Mills

PEMBROKE ST., VICTORIA, B. C.

Manufacturers of Coffees, Spices, Cocoa, Cream Tartar, Mustard and Baking Powder.

VICTORIA.

The Capital of British Columbia is situated on the Southern extremity of Vancouver Island. Its population at the time of writing exceeds 22,000 persons. Amongst the commercial houses are to be found those of the most importance in the Province, embracing at the present time several large manufacturing industries, more or less of recent inauguration, and which are doing considerable and increasing business. Other channels of trade still offer themselves in Victoria, which will doubtless in the process of time attract an increased number of works as the population and the progressive importance of the City goes forward, as assuredly is its destiny: indeed, with the pending railway schemes, as yet incomplete, for the closer uniting Victoria with the Mainland, it is morally impossible to estimate to what extent she will develop within a very few years. On all hands an activity in commercial affairs prevails, which positively and surely point to great growth hereafter. This vitality is fostered and sustained by the City Rulers, who as a Council exhibit a united and zealous desire upon every given opportunity to loyally espouse the interest and welfare of the constituency over which they preside. The Mayor for the present year, John Grant, Esq., has been elected by magnificent majorities to fill that important position, for the last three years, which affords abundant proof of his popularity and of the confidence the community reposes in him. Great and important measures occupy the attention of the Council at the present time which are already assured of an existence under By-Laws duly passed in an emphatic manner, notably amongst these is a Sewerage scheme to be carried out in the most approved manner by eminent contractors. A public Market will be instituted shortly, where the producer can reap the due reward of his skill and his labour without reference to any other medium and which will at the same time prove of great public service and economy to the consumer. In the more advanced direction it is hoped to establish in the City of Victoria an institution on the lines of a University to embrace a curriculum usually found in centres of learning, and it is felt that this movement will in its turn receive the

THOMAS EARLE,

Commission Merchant

—IMPORTER AND WHOLESALE DEALER IN—

Groceries and Provisions.

Agent for Alert Bay Canning Co., "NIMPKISH BRAND," Alert Bay.

Nos. 92, 94, 97, WHARF STREET, VICTORIA, BRITISH COLUMBIA.

Eureka Livery Stable,

H. COURTNEY, PROP

Sale and Feed Stable, 22 Pandora St., Victoria.

TELEPHONE CALL 30

HACKS, FIRST-CLASS CARRIAGES,

DOUBLE AND SINGLE.

SADDLE HORSES, Etc.

Also Plated-Ware, Fishing Tackle and Notions,
78 GOVERNMENT STREET,
N.B.—SHAVING CUTTERS A SPECIALTY. —VICTORIA.

SHEFFIELD CUTLERY STORE.

M. & H. A. FOX,

DIRECT IMPORTERS.

IMPORT DIRECT THE BEST ENGLISH
Pocket Knives, Scissors, Table Cutlery, Butcher
Knives, Razors, Stropps, and a Complete
Line of Shaving Materials.

PHOTO. VICTORIA

PIONEER STEAM COFFEE AND SPICE MILLS, VICTORIA.

MACHINERY

The "BLOOD IS THE LIFE"

Use SHOTBOLT'S Compound Syrup of Sarsaparilla, Yellow Dock and Iodide of Potassium, it will be found useful for the relief of all Impurities of the Blood. Prepared only by THOS. SHOTBOLT, Dispensing Chemist,
Johnson Street, VICTORIA, B. C.

VICTORIA PLANING MILLS, ROCK BAY BRIDGE

ESTABLISHED 1870.

MUIRHEAD & MANN,

MANUFACTURERS OF

Mouldings, Doors, Windows, Blinds, House Furnishings.
SHIP JOINER WORK A SPECIALTY.

TELEPHONE 554.

ORDERS PROMPTLY ATTENDED TO.

P. O. Box 228.

countenance and liberal support which has been accorded to the public measures which have been so promptly and energetically carried through. Some excellent schools offer sound education to the coming generation directed by able masters upon economical terms, whilst the Public Schools situated on rising ground at the top of Yates Street, have a reputation for sound training of the young second to none in the Province. Near these Schools formerly stood the Royal Hospital, which, being found inadequate to the increasing calls upon its accommodation necessitated the calling together of influential citizens for the purpose of acquiring extended buildings on a suitable site in the suburbs of the city. Their choice of ground made in the matter has fully justified the expectation of those most interested, and is within a few minutes ride of the City, situated on well elevated ground amidst the foliage of the native oak and other trees, whilst the upper stories command a lovely sea view for the enjoyment and encouragement of the invalid towards the longed for goal of convalescence. Such an Institution is the *Provincial Royal Jubilee Hospital*, and which is justly the pride of Victoria, and also a standing monument of the humanitarian spirit of the Province. On the same road which the visitor takes to the above institution, two very charming spots should be carefully noted, where Nature has indeed "lavished all her pride," one of these is on the way to the hospital and reached by the tram-car at the junction, which the courteous conductor thereof will explain, leads to "Oak Bay Harbour." This attractive location is at present scarcely correctly described as a harbour, though, in the minds of the syndicate owners it is expected will be in time to come used as such. A very excellent photograph of this property appears in this work opposite to the announcement of Messrs. Crane, McGregor & Beggs, the pushing real estate firm of Victoria, which is disposing of the same and from whom particulars of location of sites and prices can be readily obtained. The other very charming spot referred to is a panoramic view of the most extensive and striking character obtained from the summit of Mount Tolmie, so named from an early settler and land owner of that name. These consist of drives and walks by easy gradients from the excellent road striking the base of the Mount away aloft until the commanding crest is reached and where the spectator is at once

TO DEPOSITORS

THE

BRITISH COLUMBIA LAND AND INVESTMENT AGENCY, LD.

(SUCCESSORS TO ALLSOP & MASON.)

In view of the low rate of Interest given by the Dominion Savings Bank Department, and the restrictions imposed as to the amount to be deposited, this Company is now prepared to receive money on deposit, in large or small amounts, at interest at the rate of 5 per cent per annum, and on favorable terms as to notice, etc.

The offices of the Company have been removed to 40 Government Street, the premises lately occupied by the Telegraph Company.

Munroe Miller,

BOOK AND JOB PRINTER,

Bookbinder and Paper Ruler.

77 JOHNSON STREET

HENRY SAUNDERS,

Telephone No. 83.

P. O. District II.

IMPORTER AND DEALER IN

GROCERIES, PROVISIONS,

LIQUORS, ETC.

39 & 41 Johnson St.,

VICTORIA, B. C.

MAMMUNN

MUIRHEAD & MANN'S PLANING MILLS, VICTORIA.

PHOTO VICTORIA



MACMUNN

MURHEAD & MANN'S PLANING MILLS, VICTORIA.

PHOTO, VICTORIA

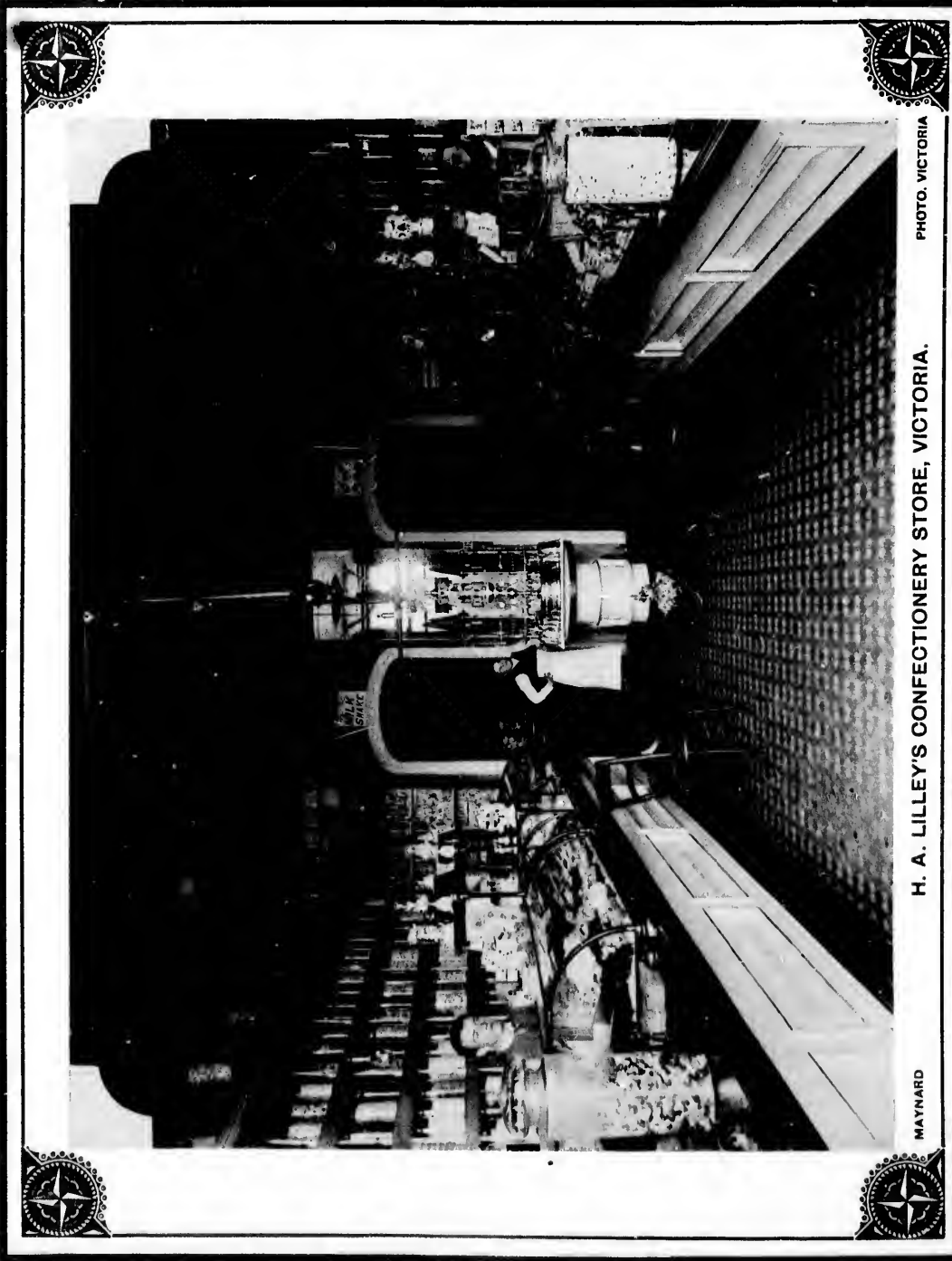


PHOTO. VICTORIA

H. A. LILLEY'S CONFECTIONERY STORE, VICTORIA.

MAYNARD

PREPARED BY
THOS. SHOTBOLT
 Dispensing Chemist,

SHOTBOLT'S
 Nerve and Bone Liniment
 Will be found a most useful application for the relief of Sprains, Bruises, Neuralgia and Rheumatism.

JOHNSON STREET,
 VICTORIA, B. C.

H. A. LILLEY,

City Candy Factory & Ice Cream Parlor

MANUFACTURER OF ALL KINDS OF

PLAIN AND FANCY CANDIES

ALSO IMPORTER AND DEALER IN

Foreign and Domestic Fruit, Nuts, Cigars, etc., etc.

105 DOUGLAS ST., BET. JOHNSON AND PANDORA, VICTORIA, B. C.

P. O. BOX 556.

arrested and stayed by the majesty of the panorama which lies spread around him at his feet seemingly, and really a feast which the Gods would envy. Many boasted spots in far off lands are recalled by the spectator of this scene and admitted at the same time to be unsurpassed in loveliness. The recall so to speak of this gift of Nature from her neglected store, is due to the acumen and ability of the firm of H. E. Croasdale & Co., of Victoria, at the especial instance of J. H. Brownlee Esq., also of that City. Around this centre can be seen the undulating slope of splendid farm lands recently placed upon the market by the firm just alluded to, in convenient sized lots for residential or other uses, and the whole is only say three miles from the Victoria Post Office. The whole of the Cadboro Bay road teems with lovely sketches and glimpses of the surrounding sea. There is "The Oak Bay," a veritable miniature Naples framed in a natural terrace of pasture and in which boating and bathing can be safely enjoyed, or the present Isaac Walton can indulge his favorite sport amongst lordly salmon whose dash and tricks of strength for freedom are well known to each disciple of the quoted authority, and whose fame by the way will remain for years yet to come especially at and around the beautiful "Dovedale" in England.

Now that our wanderings lie outside Victoria we dare not omit to call attention to Beacon Hill and the view therefrom. Some well made drives meander and lead us as if through a succession of Fairy Scenes and back to town though but a mile away by way of Dallas Road. On this excellent and commanding thoroughfare the "Hotel Dallas" has just been built by the owner and proprietor, Mr. Jensen, and of which we present a photograph in these pages. It will be felt that such an hotel on such a site should be capable of supplying all that the visitor can expect or require, and in this particular the propriety is not likely to disappoint them, for where nature leads as a model the management dare not neglect her. Around it will be noticed an absence of those so called "improvements" which the seaside visitor in England has frequently to contend with and which it is hoped will not intrude themselves around Victoria for some time to come. The resources of the gastronomic art are by no means deficient in Victoria's hotels. We present a picture of the "Hotel Metropole" not that at Charing Cross, of

THE LEADING HOTEL ON THE NORTH PACIFIC COAST

THE DRIARD

REDON & HARTNAGEL, Proprietors, VICTORIA, B. C.

THE TOURISTS' RESORT OF BRITISH COLUMBIA.

Rooms en Suite.

LARGE SAMPLE ROOMS

Baths on each Floor.

IN THE HOTEL.

A. C. WEST,
»SURGEON DENTIST«
 88 Government Street,
 VICTORIA.

ESTABLISHED 1878.
 —JOSEPH BEARS,—
 Painter, Glazier, Paper Hanger, Etc.
 Dealer in Paints, Oils, Window Glass, and Wall Papers.
 114 YATES ST. VICTORIA, B.C.

Lewis Hall,
»DR. DENTAL SURGERY,«
 88 Douglas St. Victoria, B. C.

CANDY, SWEETS, LOLLIPOPS.

For the Finest Candies of every description go to the Chicago Candy Factory, all goods manufactured on the premises and Warranted
G. A. MCCULLOCH, Prop. STRICTLY PURE AND FRESH. 46 GOVERNMENT ST.

R. H. JAMESON, No. 33 FORT STREET., Fine Groceries.
VICTORIA, B. C.

Goods all marked in plain figures, one price, the Best Goods. I always take a profit.

LATEST STYLES.

NEWEST GOODS.

B. WILLIAMS & CO.,

Cothiers and Hatters

97 JOHNSON STREET, VICTORIA, B. C.

Lowest Prices.

SAILOR-MADE SUITS A SPECIALTY.

Best Values.

course, but a building in which more than the expected measure of luxuriance and comfort offers itself to the visitor. It is situated on Johnson Street, Victoria, and under the control of the owner and proprietor, Mr. Thos. Tugwell. Most moderate rates prevail here and will be found described in the advertisement. The position is central and close to the shipping termini. Of course, the historical "Driard House" adjoining the Theatre is already well and sufficiently known to our many readers; an extensive addition to the resources of this hotel is now being carried out, with a more imposing facade than has existed in the past, and in which the future will provide all the most modern appliances, whereby the creature comforts can be dispensed to meet the taste of the most fastidious tourist. All that the sojourner in Victoria will see is more than likely to arouse an inclination towards a permanent home there, and the Vancouver Island Land and Investment Co., on Government Street, is composed of gentlemen whose position and experience guarantee to all enquirers sound investments at remunerative cost. We give a photograph interior of their office, and in the following picture a pretty view of the residence of the Secretary of the Company, Henry Croft Esq., situated on a delightful bank overlooking the constantly moving shipping and boats, or the distant snow-capped Olympians.

"Here let me, careless and unthoughtful, lying,
Hear the soft winds, above me flying,
With all the wanton boughs dispute,
And the more tuneful birds to both replying,
Nor be, myself, too mute."

Such a sentiment as this, doubtless, hovers occasionally in the mind of its owner. Again, the British Columbia Land and Investment Company, Limited, also of Government street, lately Messrs. Allsop & Mason, are eminently qualified to take care of every client who may consult them or instruct them in real estate matters. They have a large London business in Sergeant's Inn, Fleet street, where the English Capitalist can get all information as to the channels through which lucrative business can

BOOMING BUSINESS! We are not Speculators in Real Estate, but we cater to the wants of the Public

—AND CARRY FULL LINES OF—

**Carpets, Linoleums, Oilcloths, Elegant Furniture in Bed Room,
Parlor and Dining Room Suites, Hall Racks, Centre Tables, etc.**

WE INVITE INSPECTION AND GUARANTEE SATISFACTION.

THE SEHL, HASTIE & ERSKINE FURNITURE COMPANY, Ltd.

GOVERNMENT STREET, VICTORIA, B. C.

VISITORS REMARKS ON THE "COLONIAL METROPOLE."

**THE BEST MEAL AND THE BEST BED
IN THE CITY, FOR THE MONEY.**

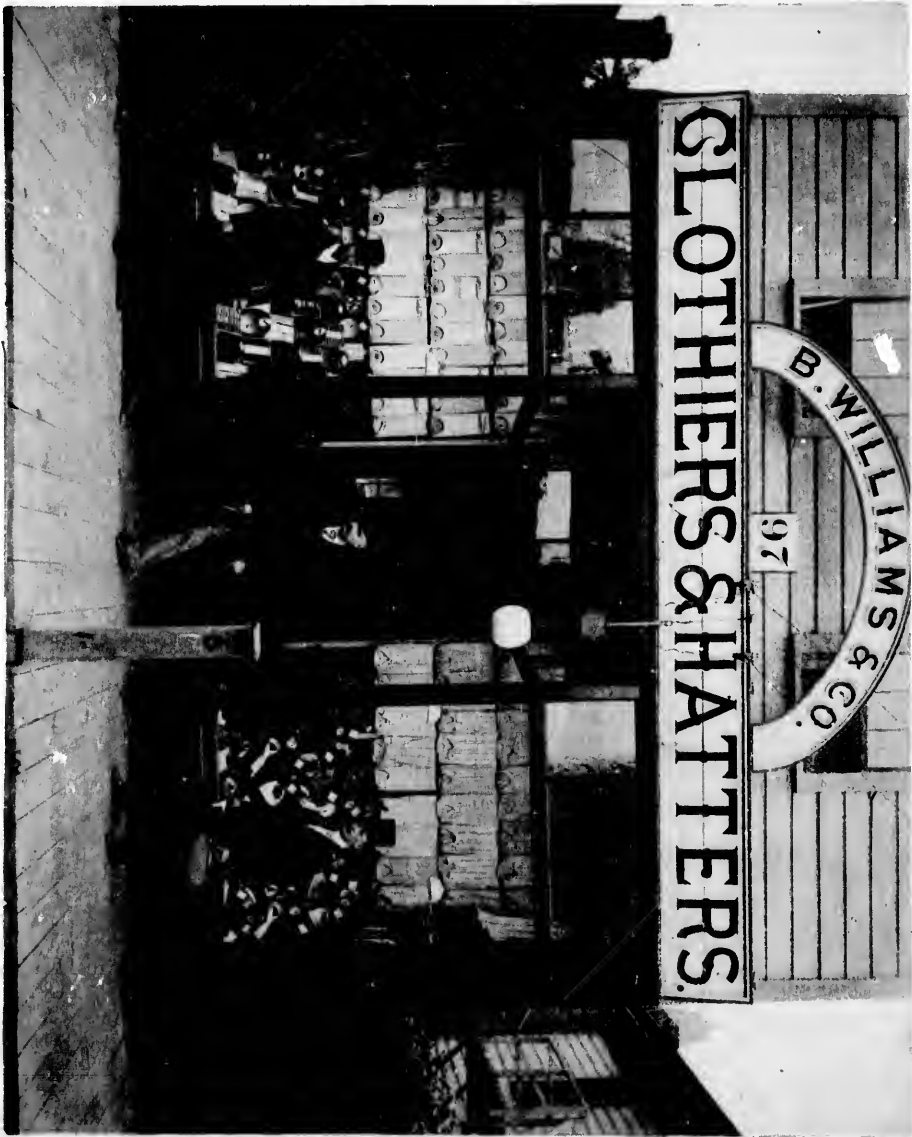
BOUGHERAT & CO.,
Importers and Wholesale Dealers in

13 Yates Street, VICTORIA, B. C.
Wines, Liquors, &c., &c.

SAVANNAH

B. WILLIAMS' CLOTHING ESTABLISHMENT, VICTORIA.

PHOTO. VICTORIA



SAVANNAH

B. WILLIAMS' CLOTHING ESTABLISHMENT, VICTORIA.

PHOTO, VICTORIA

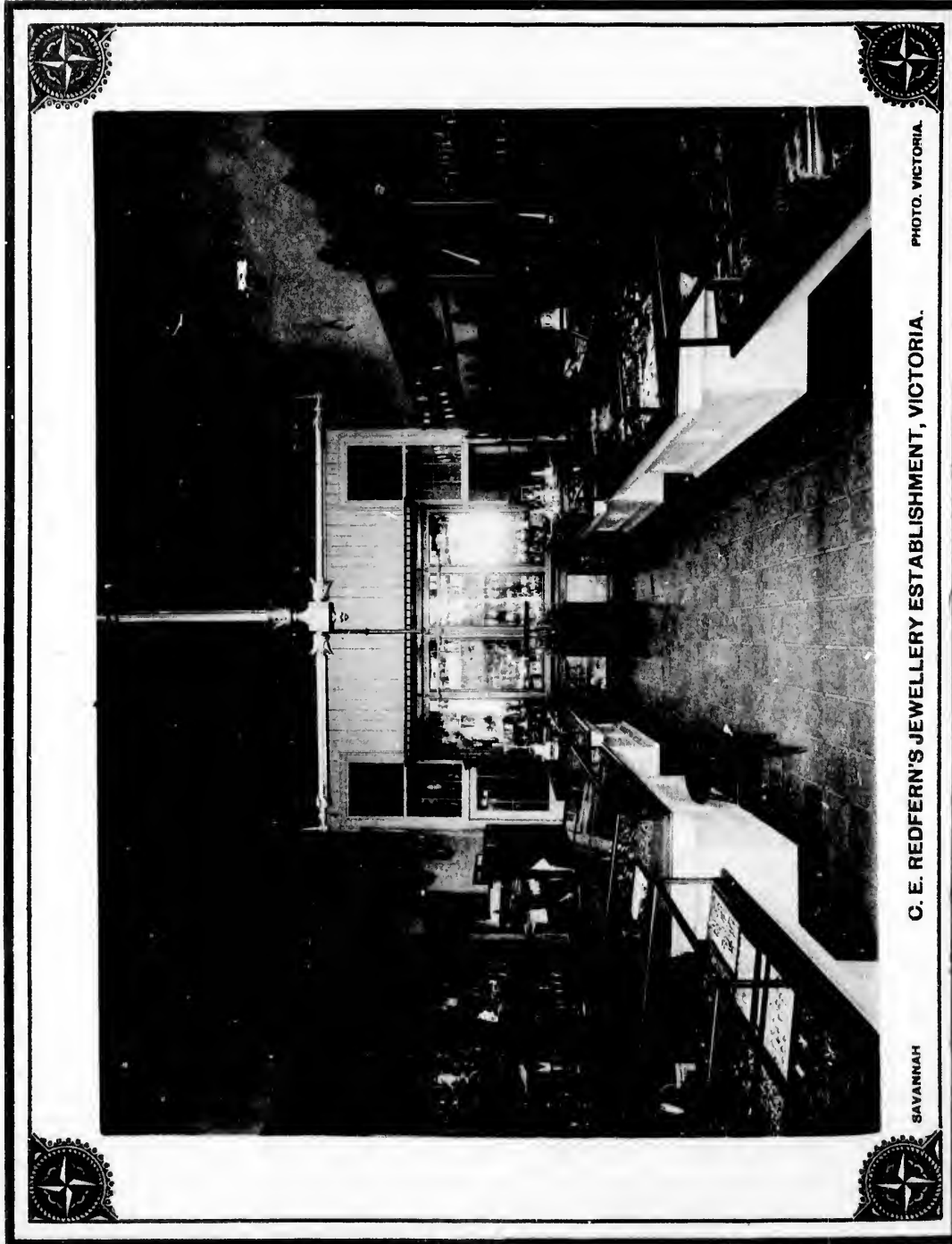


PHOTO. VICTORIA.

C. E. REDFERN'S JEWELLERY ESTABLISHMENT, VICTORIA.

SAVANNAH

For C

excl
vari
Can
ston

be
ki
th
M
a
m
ar
ale
in
an
pl
di
th
M
pe
li
M
w
&
ill

A

A

P.

C

ESTABLISHED 1862.

C. E. REDFERN,

Watchmaker and Jeweller, 43 Gov't St., Victoria.

This firm enjoys the distinction of being the only jewellery house in the Province that deals in solid gold and silver jewellery exclusively no plate or cheap imitation jewellery being admitted into the stock. Intending purchasers will also find an elegant variety of gold and silver watches, clocks in marble, onyx and wood cases, the latest styles in electro-silver tableware from the best Canadian, American and European manufacturers. Spectacles, opera glasses and a large assortment of diamonds and other precious stones, which can be set to order upon the shortest notice.

Repairing in all its Branches carefully executed. SHIP CHRONOMETERS REPAIRED AND CLEANED, AND THE RATES GIVEN BY TRANSIT OBSERVATIONS. AGENT FOR GILLETT AND JOHNSON'S FAMOUS TOWER CLOCKS AND BELLS. Estimates given for Tower Clocks and peals of Bells.

C. E. REDFERN, 43 GOVERNMENT ST.

best be done." The mental step is easily taken when referring to London to another important and leading establishment of its kind in Victoria; we refer to "Spencer's Arcade," which is duly presented in these pages by means of a combination photo. of the several departments belonging to it. We venture to submit that this place of business is not surpassed on this side of Her Majesty's dominions for extent, variety of stock, or fashion, at most moderate prices. The treasures of Paris and London have a place in the fashionable stores to be found in Mr. Spencer's large establishment, of which Victoria is proud and which commends itself as a monument of personal enterprise of no common order. Akin to this place of business exists an assemblage of artistic items in furniture, bric a brae and general household furnishings, at the store of the Selk-Hastie-Erskine Furniture Co. also on Government street, who are at all times prepared to supply the wants either of the cottage or mansion. We present an interior view of Lilley's candy store, on Douglas street. The art of captivating the most exacting palate in condiments, candies and numerous other delicacies is thoroughly understood here, and the same may be said of Lawrence & McCullough's similar place of business on Government street. A very necessary factor in the population of any city or town is the practical qualified dispensing chemist—Mr. John Teague, Jr., of Yates street, has an establishment of this kind, and is able at any time to answer the call of urgency, by night or day or to submit the many proprietary articles which are favorably known to the public. Messrs. Langley & Co., of Yates street, also are the wholesale dealers in drugs, chemicals and proprietary articles, fancy soaps, perfumes, etc., etc., and carry a large stock of the same. Mr. Thos. Shotbolt, of Johnson street, is the head of an old-established house in the same line, and endowed with great experience and sound practical knowledge of his business. A picture of McLean & Stewart's Gents' Furnishing House, on Fort street, gives the reader the information that he can be well supplied with any article usually found in such places of business, according to the latest fashion and at modern prices. At B. Williams & Co.'s, of Johnson street, also in the same line of business, the same remarks apply. This store will be found amongst our illustrations. A few doors round the corner on Government street, the pioneer jeweler of the Province, Mr. C. E. Redfern, who

Albion Iron Works Company, Ltd.

W. F. BULLEN, MANAGER.

ENGINEERS, IRON FOUNDERS AND BOILER MAKERS.

— MANUFACTURERS OF —

Marine and Land Engines, Boilers, Fish Canning and Mining Machinery, Hydraulic Giants and Pipe.

REPAIRS EXECUTED WITH DESPATCH. WORKS RUNNING NIGHT AND DAY.

P. O. BOX 12.

NO. 6 CHATHAM ST., AND NO. 71 STORE ST.

Call on KERR & BEGG,

Government Street, Victoria, B. C.

For the Latest Newspapers,

Fancy Stationery,

Views of British Columbia

IMPORTERS OF INDIAN ART WARE AND CURIOSITIES.

such as
 Benares Brass Ware; Ivory and Sandal Wood Carved Work Boxes; Indian Gold Silver and Enamelled Jewellery and Cashmere Ware; Lacquer Ware; Carved Ivory and Tortoise of the Best Quality, etc. Sole agents for the only genuine Turkish Delight imported direct from Constantinople. Choice Indian and Ceylon Teas. Fine Madras Cigars.

H. P. JOHNSON & CO.,

PROPRIETORS OF

THE INDIAN ART GALLERY

30 Government Street, VICTORIA, B. C.

Vancouver Island Land and Investment Co.,

FOR SOUND INVESTMENTS IN PROPERTY AND ON MORTGAGE

Victoria Rice and Roller Flour Mills

NOS. 64 & 66 STORE ST., VICTORIA, B. C.

— SELLERS OF —

CHINA AND JAPAN RICE, Rice Meal, Brewers Rice, † † †
Rice Flour, Chit Rice, etc.

Delta Brand Family Flour, Superfine Flour,
Bran and Shorts.

has been in Victoria nearly 30 years, during which time he was Mayor (in 1883) and member of the City Council two years previously. He has a valuable stock, say \$50,000 worth, and, contrary to the usual rule, does not include any plated ware—nothing but gold and silver. He has recently supplied and erected a costly City Hall clock, which strikes the hour and half hour on a bell weighing 2,000 pounds and is furnished with four open dials 7 feet 6 inches in diameter, for illumination by night. Messrs. Gareshe, Green & Co. are Bankers and Financial Agents. Exchanges and cash transfers also form part of their business, which is rapidly growing through the confidence which the capitalist fittingly reposes in it. They are building more extensive premises, of which we present a photograph, opposite their advertisement, to meet increasing wants. Messrs. R. D. Trevor & Co., of Store street, Victoria, are also rapidly pushing business. Messrs. Muirhead & Mann, also, near to the last mentioned, are running their manufactory to its utmost capacity and doing a large trade in the many items necessary to housebuilding, etc. All these four firms will be found amongst the photographs. W. P. Sayward has the Rock Bay Sawmill, and has the largest establishment in the country. It was established upwards of thirty years ago, and turns out over ten million feet of cut lumber per annum, giving employment to upwards of 150 people. The Albion Iron Works stands pre-eminently alone in its proportions and importance. These works had a very small beginning in 1861, having been founded in that year by the late Mr. Joseph Spratt, and have enjoyed a most successful career of great growth. There is an average number of 250 men engaged in the several departments, who receive close on to \$15,000 per month in wages. We present a picture of The Victoria Rice and Flour Mills. The head offices of this company are in Montreal. It has a complete plant necessary for its trade, which is capable of yielding 200 barrels of flour per diem. The rice comes direct to them, by their own fleet, from India, where they expect soon to ship this flour in return. Another factory in this quarter of Victoria, which is interesting, is the Pioneer Steam Coffee and Spice Mills, belonging to Messrs. Stemler & Earle, of which a photograph appears herein. Their plant is of the newest pattern and capable of meeting the increasing wants of the establishment. The manufacture of

A. J. LANOLEY.

J. N. HENDERSON.

T. M. HENDERSON.

LANGLEY & CO.,

Wholesale & Retail Druggists,

ESTABLISHED 1858.

PERFUMERY, TOILET ARTICLES, PATENT MEDICINES, DRUGS AND CHEMICALS.

PRESCRIPTIONS CAREFULLY COMPOUNDED.

21 & 23 YATES STREET, VICTORIA, B. C.

TOURISTS TO VICTORIA SHOULD NOT FAIL TO SEE

"SPENCER'S ARCADE"

IT IS REALLY WORTH A VISIT.

John Barnsley & Co.,

SPORTSMEN'S HEADQUARTERS!

119 Government St., VICTORIA, B. C.

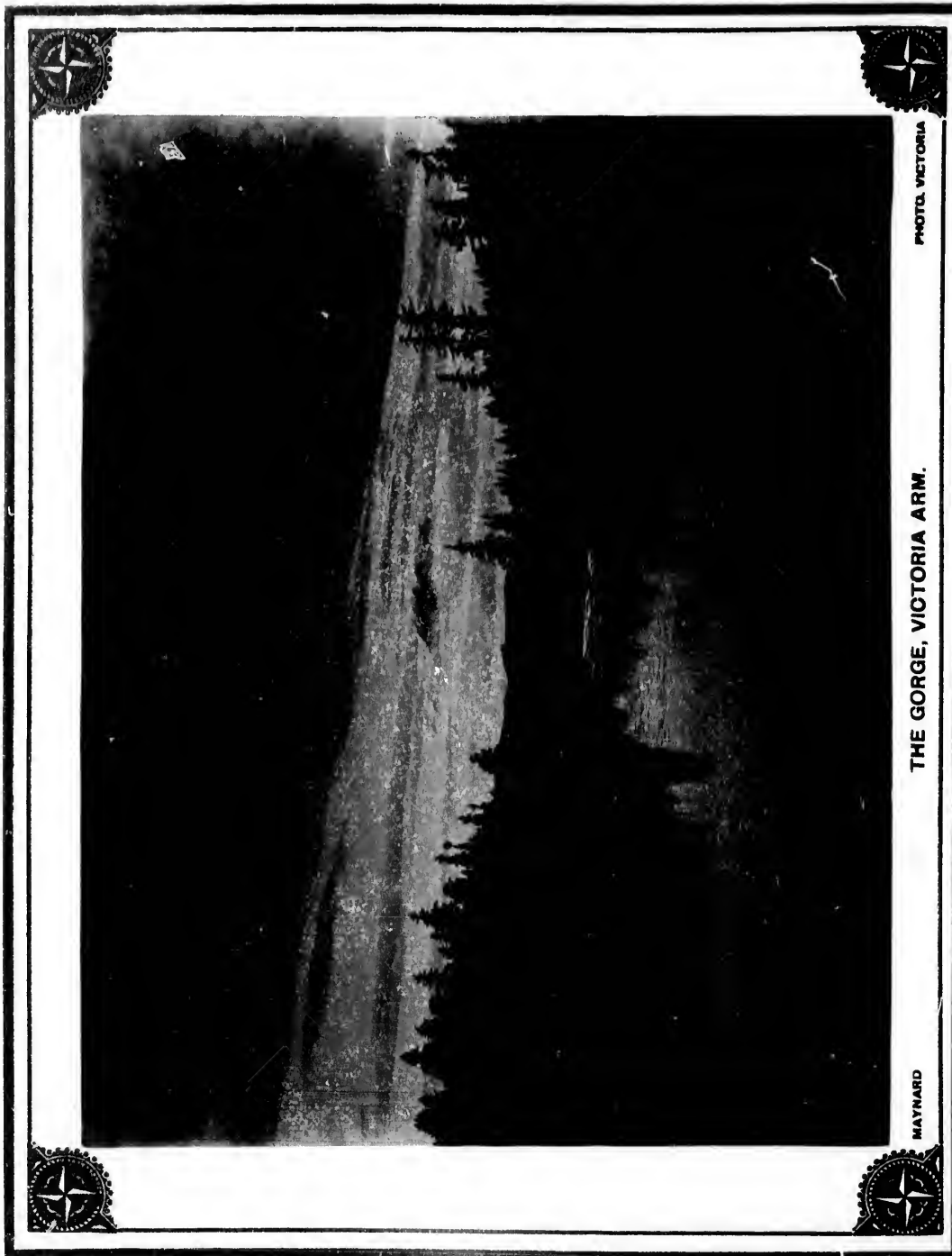
Agents for Winchester Fire Arms, Martin Fire Arms, and U. M. C. Cartridges. Repairs, etc.



SAVANNAH

VICTORIA FLOUR AND RICE MILLS, VICTORIA.

PHOTO. VICTORIA



PHOTO, VICTORIA

THE GORGE, VICTORIA ARM.

MAYNARD

Ja

No.

tin
we
by
na
su
is
be
co
be
an
At
lac

ac

Pr

Co

ra

James Bay Boat House,

D. D. McINTOSH, Proprietor.

FOOT OF GOVERNMENT ST.

Boats to Let, Day or Night.

If you want your Prescriptions carefully and accurately dispensed, be sure to go to

J. TEAGUE, JR.

No. 57 YATES STREET,
VICTORIA, B. C.

PRESCRIPTION DRUGGIST

N. B.--Agent for the Celebrated B. LAURANCE SPECTACLES.



—NO FANCY PRICES.—

tin cans and wooden boxes required in the business is also carried on. There are two very pretty views in this work to which we direct attention, viz.: the Alberni Photo and Deas' Cannery on the Fraser River. Both these represent properties owned by Messrs. Finlay, Durham & Brodie, of London, England, and Victoria, and have most interesting surroundings. The first named lies in a district which will in the future take an important part in the island's prosperity; and the latter illustration suggests the great canning industry which perhaps is second only to the lumber trade of the West. Where any town or city is rapidly passing into an advanced stage of architecture, as is the case with Victoria, it is of importance that the works should be dealt with in an intelligently professional manner, and this is certainly the case where the senior architect of the city is concerned. Mr. John Teague, Sr., or the younger but clever designer, Mr. Alex. Muir, both having offices in the city, as will be found in their advertisements. Mr. Thomas Earle directs a large wholesale provision and grocery store on Wharf street, and is the member for Victoria at Ottawa, besides being a highly respected citizen who has resided here since the early days. At Mr. Barnsley's store on Government street, the tourist sportsman can obtain all that he may require for the gun, the rod, lacrosse, tennis, or any other favorite outdoor pursuit.



The Taxable rate of Victoria property in 1891, was \$17,000,000. This with another \$7,000,000 for the area lately acquired by the extension of the city limits, makes a total of \$24,000,000.

SIGHTS WORTH SEEING:—The Gorge, Victoria Arm; Beacon Hill Park; Oak Bay; H. M. Fleet, Esquimalt; Provincial Museum, James Bay; Dry Dock, Esquimalt; Naval Dock Yard, Esquimalt; Goldstream, via E. & N. R. R.

John Teague,

Cor. Broad Street and Trounce
Avenue.



ARCHITECT.

VICTORIA, B. C.

Jno. Teague, Jr.

DRUGGIST,

Yates Street, Victoria, B. C.

Ernest Hall, M. D.

Royal College of Physicians, Edinburgh, 1884. University of Trinity College, 1884. New York Post Graduate, 1888. Eye Department, Polytechnic, Philadelphia, 1887. Moorfield Eye Hospital, and late Assistant in Central London, England, Throat and Ear Hospital, 1889.

EYE, EAR, THROAT and NOSE.

Cor. Yates and Douglas St., Victoria.

CALL ON OR WRITE TO **McMiller,**
PRINTER BOOKBINDER AND PAPER RULER

FOR A WELL BOUND FLAT
OPENING BLANK BOOK

A. B. ERSKINE'S



Boot and Shoe Emporium

132 Government Street, Cor. Johnson St.

VICTORIA, B. C.

A. MAXWELL MUIR,

ARCHITECT

Rooms 3 & 8 Turner Block,
Cor. Douglas and View Sts.

VICTORIA, B. C.

PROVINCIAL CUSTOMS.

IMPORTS—1890.		EXPORTS—1890.	
Nanaimo.....	\$ 233,301 00	Nanaimo.....	\$ 1,534,544 00
New Westminster.....	255,055 00	New Westminster.....	201,740 00
Vancouver.....	697,600 00	Vancouver.....	483,885 00
Victoria.....	3,199,226 00	Victoria.....	3,143,289 00
DUTY PAID—1890.			
Nanaimo.....	\$ 48,885 00		
New Westminster.....	60,231 78		
Vancouver.....	153,736 75		
Victoria.....	815,063 67		

The ores of the Illecillewaet District are chiefly argentiferous galena, running from 40 to 120 oz. silver per ton of 2,000 lbs., and from 50 to 70 per cent. lead. There are also veins of tetrahedrite or grey copper, which runs very high in silver, from 200 to 1,000 oz. Where this latter is found associated with the galena, the average of silver in the ore is raised proportionately.

The ores of the Kootenay may be roughly classified as:—1. Low grade galena, strong veins occurring lowest down the mountains, running 5 to 30 oz. silver per 2,000 lbs. (as at Hendryx's camp.) 2.—High grade galena, with oxides and carbonates of lead and wire silver; from 30 to 300 oz. silver per ton (as at the Hot Spring's camp.) 3.—Pyriteous copper ores, averaging from 200 to 700 oz. silver (as at the Toad Mountain camp).

McLENNAN & McFEELEY,

—IMPORTERS AND DEALERS IN—

House Furnishing Goods, Stoves, Tinware and Shelf Hardware.

ARTISTIC MANTELS, GRATES AND TILES.

PLUMBING, GAS, STEAM AND HOT WATER FITTING.

—MANUFACTURERS OF—

GALVANIZED IRON CORNICES
AND METAL ROOFING.

70 YATES STREET,
VICTORIA, B. C.

132 CORDOVA ST.,
VANCOUVER, B. C.

Boats for Sale, Hire
or built to order by

THOS. G. JONES,

Near Custom House,
20 Wharf St., Victoria.

A beautiful Souvenir Album by the Albertype Co., New York, containing 50 Views of British Columbia Scenery. Each plate is a gem, 8 x 10 size, plain photo print, well bound in full Alligator, Faded, Gilt Edges, neatly cased and embossed. This is the first Art Work of British Columbia Scenery published. As a Souvenir to the Tourist, it is invaluable; to the resident a most appropriate Christmas gift, and will be ready for delivery on the 15th of December. (See Papers for further Announcement.)

NOW IN COURSE OF PUBLICATION.



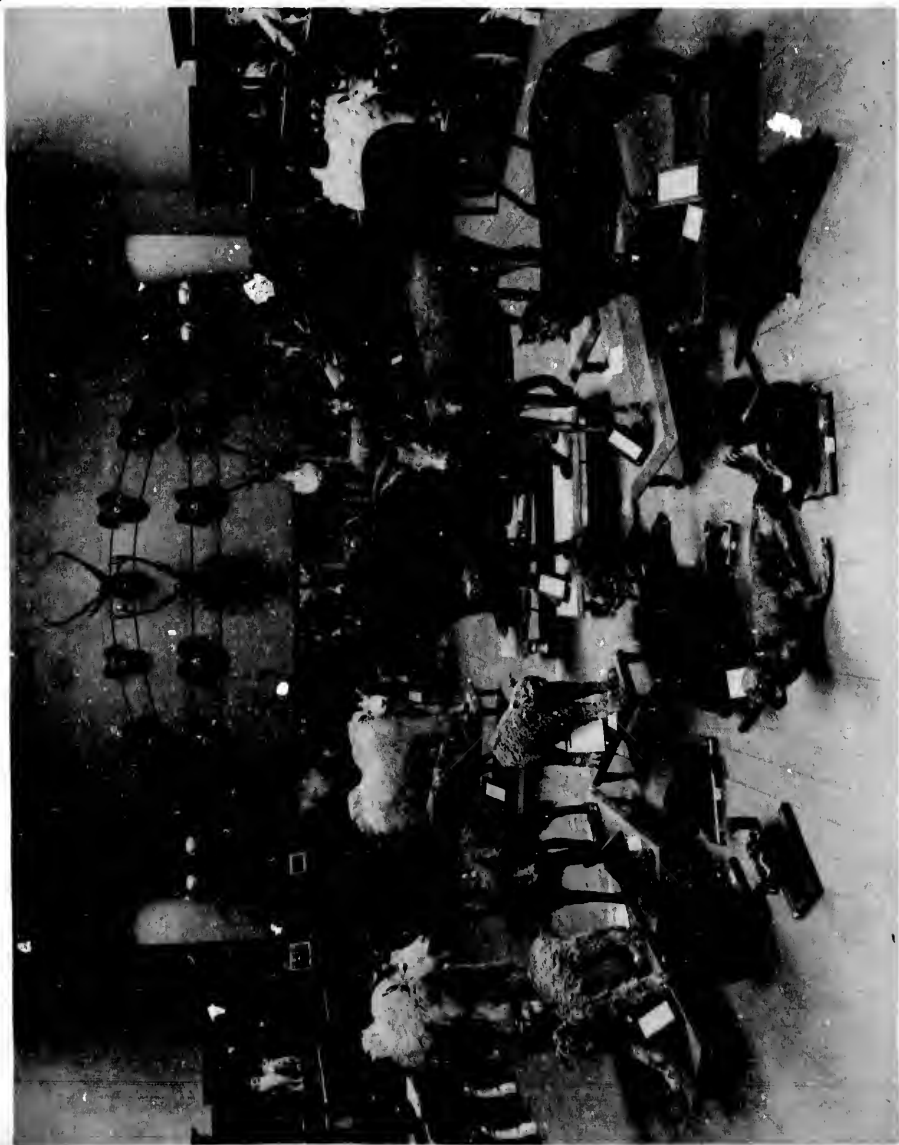
BROOKS



ALBERNI.

PHOTO. VICTORIA





PROVINCIAL MUSEUM.

MAYNARD

PHOTO. VICTORIA



No visit to Victoria is complete without a run along the E. & N. R. R. to Nanaimo.

For Wild and Picturesque Scenery, this route cannot be surpassed.

LANSDOWNE HOUSE.

JOHN PARTRIDGE,

—IMPORTER OF—

Foreign and Domestic Dry Goods

MILLINERY.

DRESS MAKING.

No. 86 YATES STREET, VICTORIA, B. C.

The Nanaimo coal district embraces an area of some two hundred square miles, that of Comox about three hundred square miles. The quantity of workable coal in the latter district has been computed at 16,000,000 tons per square mile. Excellent coal has also been discovered on the Queen Charlotte Islands, and successful borings have been made in other parts of Vancouver and on some of the adjacent islands, so that there is every reason to believe that many new collieries will be established at no very distant date. Farther east, there has been an astonishing discovery of fine bituminous coal seams in the Crow's Nest Pass of the Rockies (in the Kootenay District). Here fifteen seams have been found, two of which are respectively fourteen and thirty feet in thickness. This valuable property awaits railway construction to bring it within reach of a market.

In addition to the ores of Texada Island which is being worked to a limited extent, iron Ore is found at Sooke, Harriet Harbour, Queen Charlotte Island, River's Inlet, Hope, Nicola and Kamloops.

The Eastern average of a timber limit is from 9,000 to 15,000 feet; contrast this with the average of British Columbia, which runs from 20,000 to 500,000 feet per acre. Under 20,000 per acre a timber limit is not considered worth acquiring.

Messrs King & Casey, prominent loggers in the province, have actually cut and measured 508,000 feet of timber on an acre in the Comox District, and this case has been paralleled upon other occasions.

The following is a list of imports from the United States last year which might readily be grown within the Province and on which a duty of \$74,568 was paid:

Grains and Meal.	Fruit and Vegetables.	Meat.	Dairy and Poultry Yard	Total.	Duty.
\$181,722	\$57,496	\$88,218	\$125,505	\$452,941	\$74,568

This does not include the importation from Canada, which in some lines is very heavy; nor canned goods, which are also largely consumed.

ROCK BAY SAW MILL,

VICTORIA, B. C.

ESTABLISHED 1858

WM. P. SAYWARD,

MANUFACTURER AND DEALER IN

Island Lumber, Spars, Dressed Lumber, etc.

LUMBER ORDERS CUT AT SHORT NOTICE.

If you wish to invest your money at a good percentage, you cannot do better than to consult

THE VANCOUVER ISLAND LAND AND INVESTMENT CO.

SPORTSMEN'S HEADQUARTERS!



John Barnsley & Co.,

119 GOVERNMENT ST., VICTORIA.

R. D. TREVOR,



Commission



Merchant.

MANAGER FOR VICTORIA BRANCH

MICHIGAN LUMBER CO.

Consignments of all kinds of Produce received and disposed of at
Highest Market Prices.

CORRESPONDENCE SOLICITED.

Wharf and Warehouses, Porter's Wharf,

P. O. BOX 332.

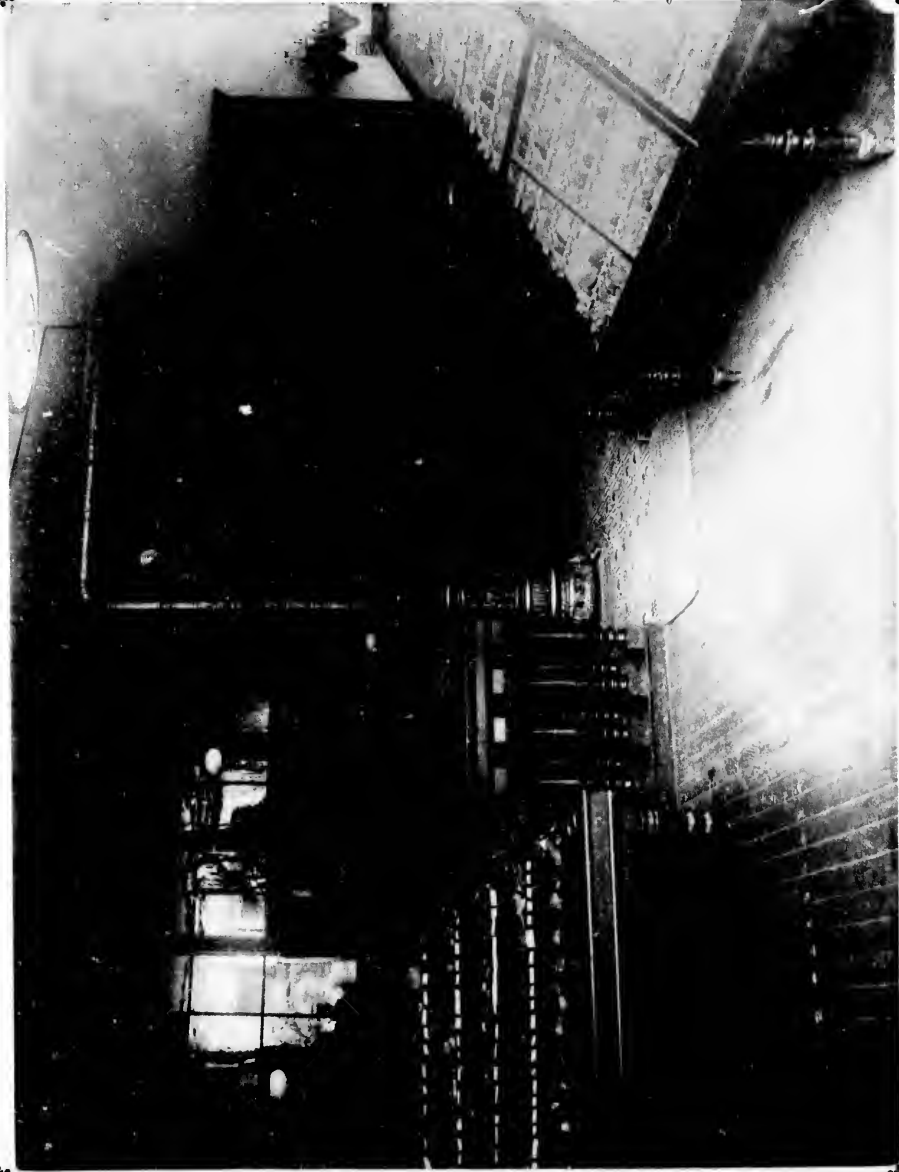
VICTORIA, BRITISH COLUMBIA.



MAJUMUN

R. D. TREVOR'S LUMBER YARD, VICTORIA, B. C.

PHOTO. VICTORIA



INTERIOR OF THE VANCOUVER ISLAND LAND AND INVESTMENT CO'S OFFICE.

ADVANTAGEOUS POSITION OF VICTORIA.

A reference to the map of the world will show at a glance, that not only are the distances comparatively favorable across the ocean to Japan, China and Australia, but the direction of the trade winds, the open harbors and vast coal fields must be taken into consideration. Moreover, now that the Canadian Pacific Railway is an accomplished fact—a road that links the Pacific Ocean with the system of the St. Lawrence navigation on the Eastern side of the American Continent, and traverses, en route, one immense region rich in the products of the soil and wealth of minerals—it is impossible to over-estimate the growth of the widely extended commerce that must of necessity follow.

The townsite rises gradually from the water until it reaches a higher level, where will be found the principal business streets. These streets in turn stretch away beyond, and on to still gradually rising ground, where are located some of the principal residential houses. In London, the metropolis of England, the seat of government is removed a short distance, namely to the Court of St. James at Westminster and so here the seat of government is removed across the bridge to the Westminster of Victoria on James Bay. Another "arm" of the harbour extends in a northerly direction three miles inland, reaches nearly to Esquimalt, the headquarters of the British Squadron.

Turning to the map of Victoria, it will be seen that she commands the whole of the rich sounds, gulfs and inlets which spread themselves for hundreds of miles around, tapping the vast regions of undeveloped wealth that centre to these deep waters down countless canyons and sloping valleys, whilst not only is she the first port that greets the hardy argonaut on his safe return to shore, but the commerce of Vancouver, New Westminster, Wellington, Nanaimo and Whatcom on the north and east, and Olympia, Port Angeles, Port Crescent, Tacoma, Seattle and Port Townsend from the south, with all the other places rapidly growing into importance along these shores, must pass through her gateway.

As showing the importance of her geographical position, the English Government made it a condition prior to the granting of the large subsidy to the line of steamships to China and Japan that all their boats, outward or inward bound, must call at Victoria.

The Peninsular and Oriental Steamship Co. have commenced also to run to a line of steamships from the Orient.

Moreover, not only is it the seat of the Provincial Government, but the Home and Dominion Governments also have vast and special interests in Victoria, where are located strong fortifications, with extensive victualling yards, naval yards and coaling stations established as the headquarters of the British fleet in the Pacific waters.

Such, then, briefly, is her important geographical position for commerce and trade and naval and military defence; nor is her position for health and enjoyment, as a residential centre, less attractive.

THE VANCOUVER ISLAND LAND AND INVESTMENT Co. Limited.

(Successors to Bouchier, Craft & Mallette.)

*Colonist Block,
Victoria.*

GOOD OPENINGS FOR INVESTMENTS.

So numerous are the opportunities for safely investing capital in this long established city that we can only make a brief mention of a few of the most prominent ones.

In the first place, Victoria is not a city built last year or the year before that, but has been steadily growing in size, wealth and importance for the last forty years. When a bona fide industry comes to Victoria, it comes to stay, and if necessary the City Council contributes largely to that end. Bonuses have been given to several large manufacturing concerns, and the citizens are always prepared to help any industry which will be of material advantage to the city.

The surrounding country abounds in the best of agricultural lands, adapted to all classes of farming horse, cattle and sheep raising, the latter an industry which ought to be more extensively developed, as our main supply of mutton comes from the United States.

Large amounts of money could be advantageously used in developing the natural resources of this wonderfully gifted province, the mines of precious metals, coal and iron, the quarries of marble and granite, and the great timber claims still to be taken up. Then again, the waters abound in an abundance of fish of all varieties, far more valuable fisheries than those of the Atlantic Ocean, because they have never been thoroughly explored, the salmon being the only fish largely sought after.

We can think of no manufacturing interest that would not pay. Woollen, flour and paper mills and more lumber mills might be especially mentioned.

We claim to be the leading Real Estate Brokers and Financial Agents of Victoria and will receive moneys from foreign investors, giving their business the most careful attention.

☞ Maps, plans, specifications or any information cheerfully furnished on application.

☞ Drafts may be sent through the Bank of British Columbia of London, England, or to Garesche, Green & Co., Victoria, B. C.

☞ Best of references given.

THE VANCOUVER ISLAND LAND AND INVESTMENT Co. Limited.

(Successors to Bouchier, Craft and Mallette.)

Colonist Block.

Victoria.



MAGNUM

RESIDENCE OF MR. H. CROFT, VICTORIA HARBOR.

PHOTO. VICTORIA.

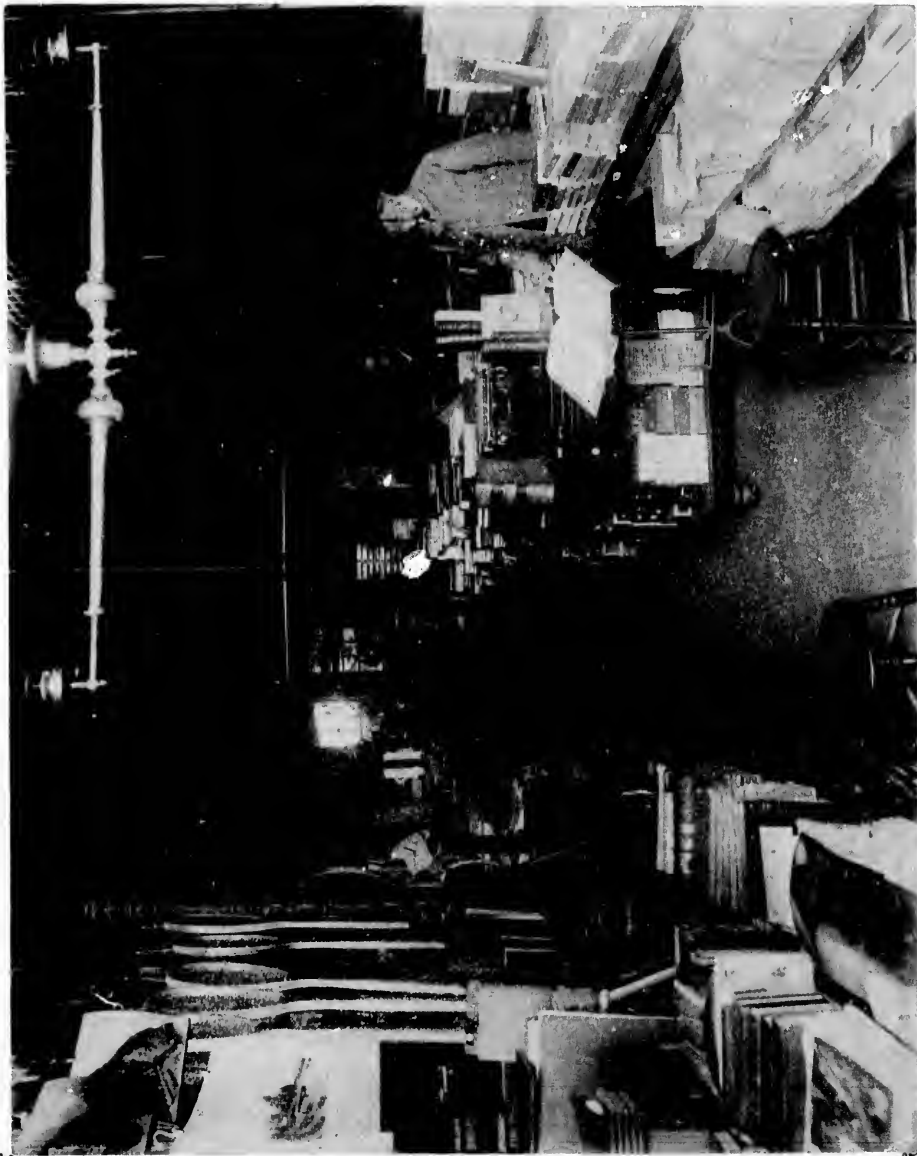


PHOTO. VICTORIA.

INTERIOR OF T. N. HIBBEN & CO.'S BOOKSTORE, VICTORIA.

MACMUNN

Established 1858.

T. N. HIBBEN & CO.

BOOKSELLERS AND STATIONERS

No. 69 Government St.

Victoria, B. C.

SOLE AGENTS FOR

MacMunn's Photographs *of C. P. R., Victoria, and Surrounding Country*
Samples can be seen in this volume.

ALSO, AGENTS FOR

*Aiken, Lambert & Co.'s Gold Pens and Pencil Cases,
Stephens', Arnold's, and Sanford's Inks,
Spalding's Base Ball Goods*

The Caligraph

"The Cashier" Register.

Garesche, Green & Co.

BANKERS

No. 81 Government Street,

Victoria, B. C.



Deposits Received in Gold, Silver and U. S. Currency. Interest allowed on the same on time deposits.

Gold Dust and U. S. Currency purchased at highest market rates.

Sight Drafts and Telegraph Transfers, San Francisco, New York and Canada.

Exchange on London, available in all parts of Europe, England, Ireland and Scotland.

Letters of Credit issued on the principal cities of the United States, Canada and Europe.

Agents for Wells, Fargo & Co.



MAYNARD

A. A. GREEN'S NEW BLOCK, VICTORIA.

PHOTO. VIC.



Glacier Hotel C.P.R.

MAYNARD

BRITISH COLUMBIA SCENERY.

PHOTO. VIC.

MRS. R. MAYNARD,

Photographic Artist

AND DEALER IN ALL KINDS OF

PHOTOGRAPHIC MATERIALS.

Views of **Victoria and British Columbia** For Sale


Mrs. Maynard's skill in Photography is admitted to be quite First-Class and her Views,
of which a large stock is always on hand, embraces pictures of
Alaska and the North, as well as the better known
portion of British Columbia.

DOUGLAS STREET, VICTORIA, B. C.

Spencer's Arcade



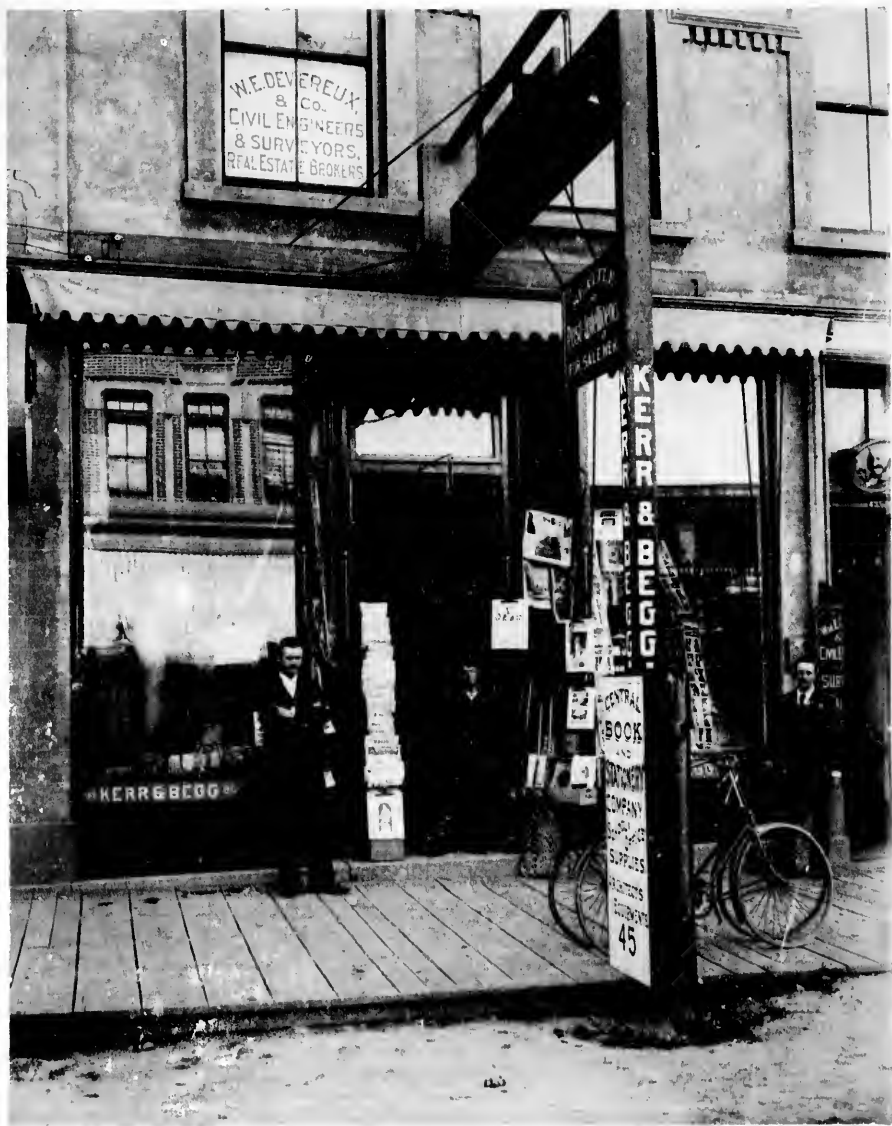
Largest Stock of Fine Dry Goods,
Mantles, Millinery,
and
Artistic House Furnishings West of Toronto.



SPECIALTIES:

Silks, French Dress Materials, Kid Gloves,
Silk Hosiery, Carpets, Tailor-made
Costumes, Riding Habits.

D. SPENCER, GOVERNMENT AND BROAD STREETS,
VICTORIA, BRITISH COLUMBIA



SAVANNAH

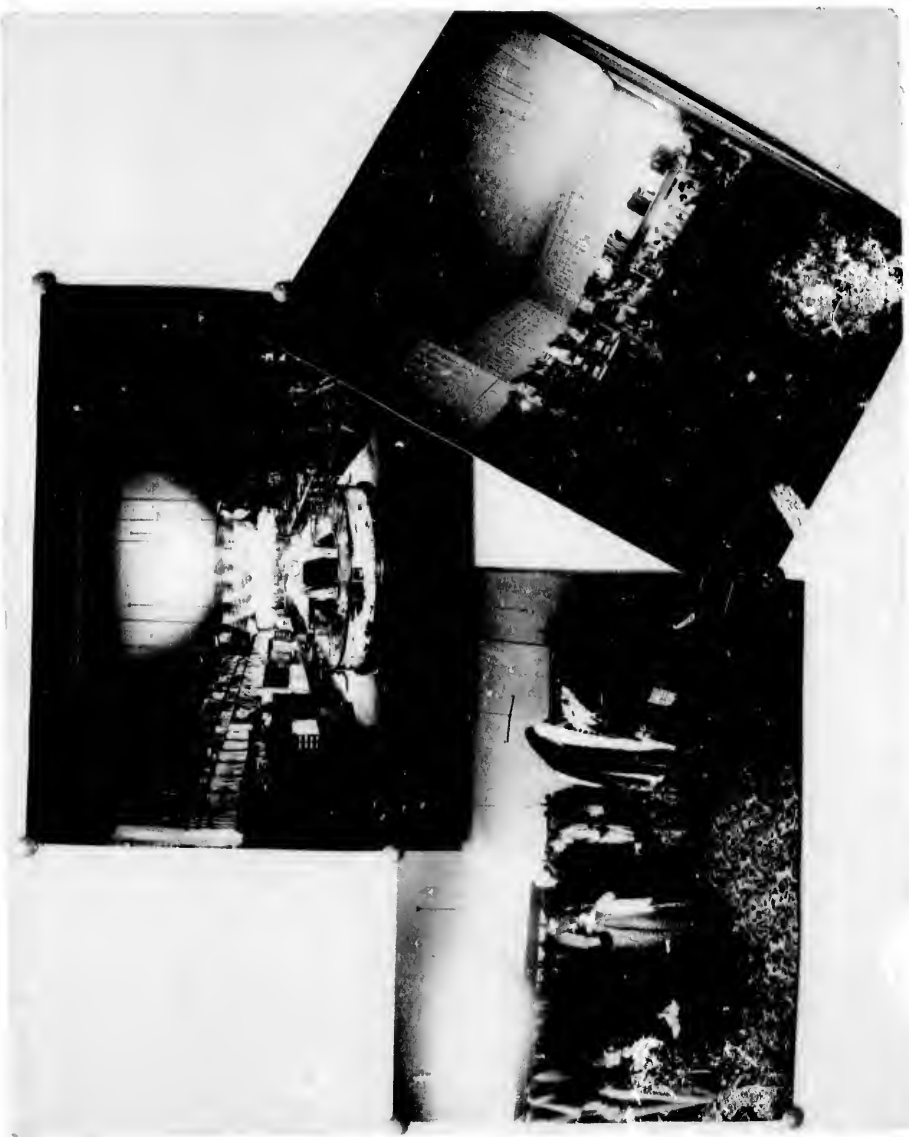
KERR & BEGG'S BOOK STORE, VICTORIA.

PHOTO W.C.

1
P.

ves,

UMBIA



SAVANNAH

SPENCER'S ARCADE, GOVERNMENT ST., VICTORIA.

PHOTO. VICTORIA

CENTRAL BOOK AND STATIONERY COMPANY

NO. 45 GOVERNMENT STREET,

VICTORIA, B. C.



KERR & BEGG,

IMPORTERS AND DEALERS IN

Albums, Dictionaries, Atlases, Bibles & Prayer Books

*SPECIAL ATTENTION GIVEN TO HIGH GRADE STATIONERY. BEST VIEWS OF CITY
AND COUNTRY ALWAYS ON SALE. A FULL LINE OF PAPERS AND
PERIODICALS ALWAYS ON HAND. ALL KINDS OF OFFICE
AND SCHOOL SUPPLIES KEPT IN STOCK.*



SPECIAL ARRANGEMENTS WITH PUBLISHERS TO FORWARD ALL THE LATE NOVELS AS PUBLISHED.

*SELECT YOUR BASEBALLS, BATS, HAMMOCKS, AND ALL YOUR SPORTING
GOODS FROM OUR STOCK.*

P. O. BOX No. 737.

Mt. Tolmie Park.

This Estate, containing nearly 300 acres, is shewn on that portion of the Maps of Victoria known as Victoria North. The property is less than two-and-one-half miles from City Hall, Post Office and Steamboat Landings.

The nearest terminus of the Electric Tramway is one-and-a-quarter miles south of the property, but an assurance will be given to purchasers that a service will be in operation to the centre of the Estate by June, 1892.

The Property embraces almost every variety of soil, slope and view peculiar to the picturesque Island of Vancouver. The elevation above the sea ranges from 100 to 150 feet, except where Mount Tolmie rears his crest some 200 feet higher. The lower lands are rich and fertile, and are now under a high state of cultivation.

From the higher positions, a magnificent view of Oak Bay and the City of Victoria is obtained—a view extending in area as the slopes of Mount Tolmie are reached, while from the Summit of the hill there is a perfect Cyclorama. To the Southward, Victoria nestles amongst gardens and shrubberies. Eastward lie Oak Bay and Cadboro Bay (where suburbs of Victoria are now growing;) these expand into the Straits of Juan de Fuca, with the snow-capped peaks of the lofty Olympians, making as a whole, a glorious landscape that never satiates. To the Northward lie Corlovet Bay and Cedar Hill, and to the Westward the mountain ranges of the Island.

The purchaser of a single lot acquires a share in that noble heritage provided by Nature, and to ensure the enjoyment of it to the residents of the property the owners have wisely reserved a Park at the Summit, which is reached by gracefully-winding roads.

There is good water on the Estate—School and Church accommodation, no stoncs or stumps to remove, and any sized plot, from 50x120 to 5 acres, can be purchased.

Do you want any more attractions to induce you to make Mount Tolmie your home? Come and try it. Spend one hour gazing on the magnificent panorama spread before you, inhale for a time the soft but health-giving breezes of the Pacific, learn that the climate is almost as genial, though more temperate than that of Italy—do all these things, and you will know that, at length you have found a place where life is worth living

H. E. Croasdaile & Co.,

Head Agents,

No. 42 Fort Street, - - - - Victoria, British Columbia

The Photo. on opposite page is taken from top of Mount Tolmie.

COLONIAL METROPOLE

31 and 33 Johnson Street,

VICTORIA, B. C.



The travelling public will find
this House, without exception, the very best Hotel
in Victoria for the rates, as you will get as good accommodation here
as in other houses where you would be charged much more. This House has been.

RECENTLY REBUILT AND REFURNISHED

in the best possible manner with all the latest conveniences, with an eye particularly for
the comfort of families and those seeking a home-like Hotel. Our Sanitary
arrangements will compare favorably with houses that charge from
\$3.00 to \$5.00 per day, whereas our charges are

ONLY \$1.00 TO \$1.50 PER DAY.

We solicit your inspection, feeling confident we can give you Perfect Satisfaction.
Our COACH will meet you at the wharves and Railroad Station and carry
your baggage to and from the House free of charge.

N. B. ELECTRIC LIGHT, HOT AND COLD BATHS, FIRE-PROOF SAFE, ETC., ETC.

Thos. Tugwell, Prop.

Findlay Durham & Brodie

COMMISSION MERCHANTS.



AGENTS FOR

The Northern Fire Assurance Company of London.
The British and Foreign Marine Insurance Co. of Liverpool.
The Royal Mail Steam Packet Company of London.
The British Columbia Canning Co. (Limited) of London.

LONDON OFFICE,
43 to 46 Threadneedle Street.

Wharf St., Victoria, B. C.

— THE —

British Columbia Canning Company, Limited

LONDON, ENGLAND.

CANNERIES :

Deas' Island, Fraser River, "Fisherman Brand."
Naas River Fishery, Naas River, "Chanticleer Brand."
Windsor Cannery, Skeena River, "Triangle Brand."
River's Inlet Cannery, Rivers Inlet, "O Wei Kay No Brand."
Victoria Cannery, River's Inlet, "Viceroy Brand."
Victoria Saw Mill, River's Inlet.

Findlay Durham & Brodie, *Wharf St., Victoria, B. C. and*
Agents. *43 & 46 Threadneedle St.*



BROOKS

DEAS' ISLAND FISHERY. (FINDLAY, DURHAM & BRODIE.)

PHOTO. VICTORIA.

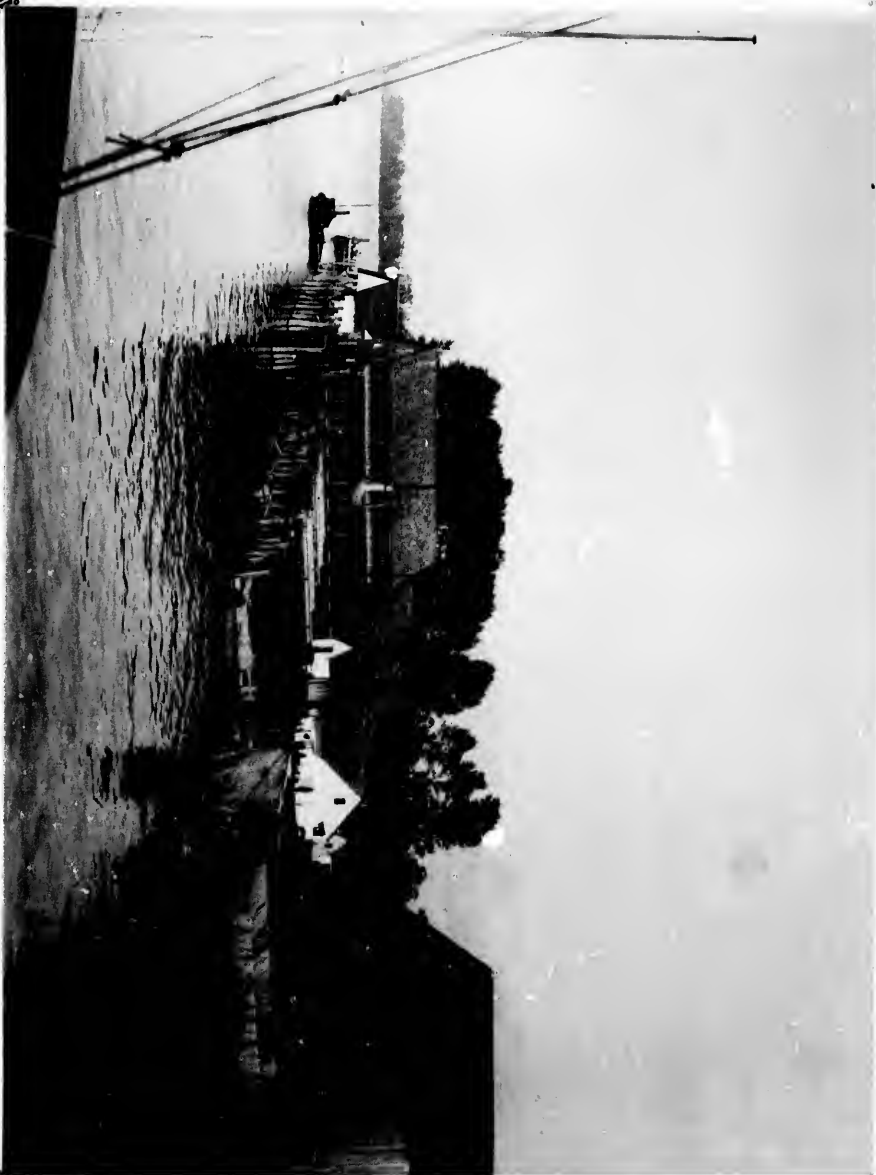




PHOTO. VICTORIA.

E. & N. R. R. SWING BRIDGE, VICTORIA HARBOR

MACMUNN



Esquimalt and Nanaimo Railway, TIME TABLE.

NORTH BOND (Read Down.)

STATIONS.	Miles from Victoria.	No. 2 PASSENGER Daily.		No. 4 PASSENGER Saturdays and Sundays.	
		A. M.	P. M.	A. M.	P. M.
VICTORIA.....		Depart 8.00		Depart 8.30	
RUSSELL'S.....	1	" 8.04	" 8.34	" " " "	" " " "
ESQUIMALT.....	4	" 8.14	" 8.44	" " " "	" " " "
GOLDSTREAM.....	11	" 8.39	" 4.09	" " " "	" " " "
SHAWNIGAN LAKE.....	28	" 9.34	" 5.04	" " " "	" " " "
COBBLE HILL.....	31	" 9.44	" 5.14	" " " "	" " " "
McPHERSON'S.....	35	" 9.57	" 5.29	" " " "	" " " "
KOKSILAH.....	38	" 10.07	" 5.39	" " " "	" " " "
DUNCAN'S.....	40	" 10.12	" 5.44	" " " "	" " " "
SOMENOS.....	43	" 10.22	" 5.54	" " " "	" " " "
CHEMAINUTS.....	52	" 10.48	" 6.16	" " " "	" " " "
NANAIMO.....	73	{ Arrive 11.50 Depart 11.59 P. M.	" 7.14	" " " "	" " " "
WELLINGTON.....	78	Arrive 12.14	Arrive 7.29	" " " "	" " " "

SOUTH BOUND (Read up.)

STATIONS.	Miles from Wellington.	No. 1 PASSENGER Daily.		No. 3 PASSENGER Saturdays and Sundays.	
		P. M.	A. M.	P. M.	A. M.
VICTORIA.....	78	Arrive 12.24	Arrive 6.58	" " " "	" " " "
RUSSELL'S.....	77	" 12.20	" 6.54	" " " "	" " " "
ESQUIMALT.....	74	" 12.10	" 6.44	" " " "	" " " "
GOLDSTREAM.....	67	" 11.45 A. M.	" 6.19	" " " "	" " " "
SHAWNIGAN LAKE.....	50	" 10.50	" 5.24	" " " "	" " " "
COBBLE HILL.....	47	" 10.40	" 5.14	" " " "	" " " "
McPHERSON'S.....	43	" 10.27	" 4.59	" " " "	" " " "
KOKSILAH.....	40	" 10.17	" 4.49	" " " "	" " " "
DUNCAN'S.....	38	" 10.12	" 4.44	" " " "	" " " "
SOMENOS.....	35	" 10.02	" 4.34	" " " "	" " " "
CHEMAINUTS.....	26	" 9.36	" 4.12	" " " "	" " " "
NANAIMO.....	5	{ Depart 8.34 Arrive 8.25	" 3.14	" " " "	" " " "
WELLINGTON.....		Depart 8.10	Depart 2.59	" " " "	" " " "

OAK HARBOR



2½ Miles from Victoria Post Office.



CONNECTED BY ELECTRIC TRAMWAY

Acknowledged the most beautiful portion of the City.

The most Desirable Residence portion of City.

Perfect facilities for Sea Bathing.

PARTICULARS OF ANY KIND ON APPLICATION TO THE AGENTS

Crane, McGregor & Boggs,

30 BROAD ST., VICTORIA, B. C.



MACMUNN

OAK BAY. SEE ADVERTISEMENT, CRANE, MCGREGOR & BOGGS

PHOTO. VICTORIA.

AY

,
C.

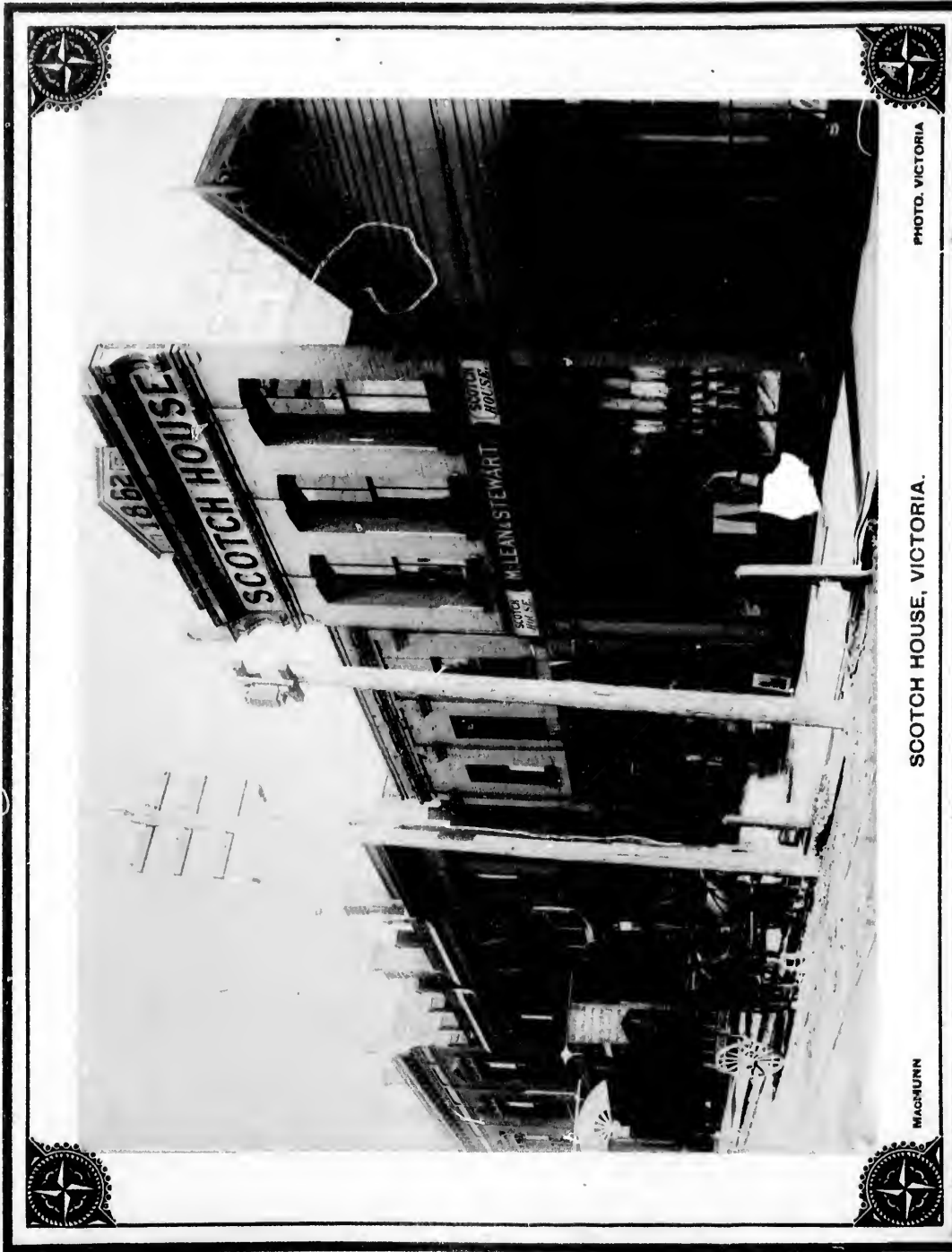


PHOTO. VICTORIA

SCOTCH HOUSE, VICTORIA.

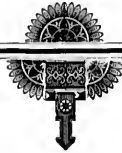
MACHMUNN

ESTABLISHED 1862.

SCOTCH HOUSE



McLEAN & STEWART, 31 FORT ST.,
VICTORIA, B. C.



Keep in Stock, the Best and Largest Stock of

Clothing and Gents' Furnishing Goods
IN BRITISH COLUMBIA.

TOURISTS *AND THE TRAVELLING PUBLIC, WILL FIND IT
TO THEIR ADVANTAGE TO CALL ON US.*

McLean & Stewart.

HOTEL DALLAS

Victoria, B. C.,

Was designed especially for Tourists, Travellers and Health Seekers, who do not care to be shut up in Hotels on crowded streets and yet only eight minutes by Electric Tramcar from the very centre of the City and Post Office.

This Hotel is erected on the shore of the Straits of Juan de Fuca, just at the entrance to Victoria Harbor, where all the China, Japan, San Francisco, Portland, Alaska, Puget Sound and Local Steamers arrive and depart in full view of Hotel. Commanding also the finest view obtainable on the whole Coast of the Grand Olympic Range of Snow Capped Mountains in the back ground and the Straits in front, where every craft bound for Puget Sound or the Gulf of Georgia must pass. A fine Sandy Beach on the opposite side of the Road and on the Boulevard leading to the Beautiful Park (Beacon Hill).

This Hotel will be ready for business in August 1891. It will be on the European plan with a First-Class Restaurant, Bar, Billiard Room, etc. A large Smoking Room on the third floor under the tower leading to the flat roof, where guests can take a promenade by way of a spiral staircase leading on to the roof, which is well protected by a fire wall and iron railing to insure perfect safety. Here a panorama of the City and surrounding country is obtained that must be seen, as a description cannot do it justice.

The Rooms are large, Halls wide and well lighted, perfectly safe from fire, as no fire places or chimneys exist. Lamps or candles are not used, as it is heated by steam generated in a detached building, lighted by Incandescent Electric Light in every room and also bells in each, communicating with office of Hotel. Hot and Cold Baths free to guests.

The Owner and Proprietor has had over twenty years experience in the Hotel business and has, in the erection of this house, endeavored to, as near as possible, suit the requirements of the travelling Public. I guarantee it strictly First-Class in every respect.

W. M. JENSEN.

P. S.—All Vegetables and other Farm Produce used in this House are raised on the owner's Ranch in Lake District.



MAYNARD



HOTEL DALLAS.

PHOTO. VICTORIA





MAYNARD

CAPTAIN JNO. IRVING'S RESIDENCE.

PHOTO. VICTORIA

CANADIAN PACIFIC NAVIGATION COMPANY, Limited.

Time Table No. 14, taking effect June 23rd, 1891.

FRASER RIVER ROUTE.

LEAVE VICTORIA FOR New Westminster, Ladner's Landing and Lulu Island, Sunday at 23 o'clock; Wednesday and Friday at 7 o'clock. Sunday's Steamer connects at New Westminster with C. P. R'y train going East. For Plumper's Pass, Wednesday and Friday at 7 o'clock. For Moresby Island, Friday at 7 o'clock.

LEAVE NEW WESTMINSTER FOR Victoria, Monday at 13 o'clock. Thursday and Saturday at 7 o'clock. For Plumper Pass, Saturday at 7 o'clock. For Chilliwack and Way Landings, Tuesday, Thursday and Saturday at 7 o'clock.

BURRARD INLET ROUTE.

LEAVE VICTORIA FOR Vancouver, Daily, (except Monday) at 2 o'clock. For Moodyville, Saturday at 2 o'clock. Steamers "Premier," and "Eastern Oregon," for all Sound Ports, connect daily at New Whatecom with train leaving Vancouver at 9 o'clock.

LEAVE VANCOUVER FOR Victoria, daily, (except Monday) at 13 o'clock, or on arrival of C. P. R'y, No. 1 train.

NORTHERN ROUTE.

Steamships of this Company leave for Fort Simpson and intermediate ports on the first and fifteenth of each month. When sufficient inducements offer, trips will be extended to Queen Charlotte Islands.

BARCLAY SOUND ROUTE.

Steamer Maude leaves for Alberni, Ucole, Uchulet, and Sound Ports, the 27th of each month.

BUTE INLET ROUTE.

Steamer "Rainbow" leaves every Friday at 7 a. m., for New Westminster, Burrard Inlet, Nanaimo and Logging Camps, extending trips to Bute Inlet when inducements offer.

G. A. CARLETON,
GENERAL AGENT.

JOHN IRVING,
MANAGER.

VANCOUVER FURNITURE WAREHOUSE,

Bastion, Wharf and Front Streets, Nanaimo, B. C.

ESTABLISHED 1873.

JOHN HILBERT,

NANAIMO, B. C.

MANUFACTURER AND IMPORTER OF FURNITURE.

Dealer in Carpets, Bedding, Wall Paper, Electro-Plated Ware,

Table Cutlery, Crockery and Glassware, etc.

THOMAS HOOPER,

ARCHITECT

OVER SPENCER'S ARCADE,
GOVERNMENT STREET, : :



VICTORIA, B. C.

NANAIMO.

As some have described this city "The Newcastle of the Pacific Coast," we think the title is a most appropriate one. It possesses a remarkably fine harbour, where vessels of any size can sail at any stage of the tide. The New Vancouver Coal Co. have vessels of upwards of 4,000 tons, which are laid close by the shore for their cargoes, and we are pleased to offer a photograph of this Company's sources of supply, which is at Northfield, some two miles outside Nanaimo. The output of coal is upwards of 2,000 tons per day. They are opening two new shafts to meet the increasing demands for the high class coal which is abundant in the district. The area of the coal-bearing district is estimated at 200 square miles, and besides this wealth large deposits of copper, iron, silver, lead, marble, etc., abound. The City Council is composed chiefly of old residents, presided over by John Hilbert, Esq., Mayor. The "arc" system of electricity lights the city. An Hotel, of considerable proportions, is being erected to supplement the present inadequate hotel accommodation. This city is some 80 miles from Victoria, by the E. & N. Railway, over an interesting tract of country, and which line will ever be connected with the foresight and enterprise of the late Hon. Robert Dunsuir.—See Time Table. An interesting picture of Departure Bay is also given in this work, where the wharves belonging to the successors of the last named gentleman are situated, and from which the coal from their extensive Collieries are daily shipped, and which before long will be conveyed by ships built at Nanaimo by native industry. Mail steamers run between Vancouver and Nanaimo daily, and have always been noted for the punctuality observed in the time of their trips. A great mining locality like Nanaimo and its environs must rapidly build up a town and create a varied or general demand for articles of utility. For instance, take the case of boots and shoes and articles of clothing for both sexes, next to eating and drinking they are of the greatest service. In the former case, Messrs. Orr & Rendell keep in stock the most fashionable and the highest grade of goods, so as to give ease and comfort, joined to moderate charges. The Cheapside Clothing Store, in the adjoining premises, always have on hand every necessary garment, save the boots or shoes, to equip the human figure in the standard fashion, upon the most reasonable terms; whilst the ladies' wants are liberally catered for by Messrs. Spencer & Perkins—see their advertisement—and who constantly draw from the leading fashionable centres of the Old Country for their stores. The crowning feature of humanity can be procured in all the latest shapes at "The Box," or Hat Emporium of Mr. Brown, next door. The timber and lumbering business is well represented in the mill of D. Haslam & Co., who have recently increased their plant with more powerful and modern machinery, consistent with the demands made upon them in shape of a largely increasing trade. We give a view of their Mill in this volume. The outlook for the City of Nanaimo is of the most promising character and seems to have luckily shared in the district's prosperity. It is said that on Texada Island, lying alongside Nanaimo, there exists traces of iron in masses extending for miles and only waiting the touch of capital for conversion to future uses. The climate is similar to that of the Old Country, and there is certainly more sociability than in Victoria.

SPENCER & PERKINS,

THE CASH STORE

NANAIMO, B. C.

The Places where you get Best Values and get a DISCOUNT FOR CASH BESIDES.

T. L. BROWNE & CO.,

THE BOX

NANAIMO, B. C.

DO YOU WANT \$2?

We are not surprised to hear you say Yes! and we can assure you that it will give us the greatest pleasure to put you in the way of getting them. Now just listen to what we are going to say, and we will try to explain to you how to get them.

Well, when you make any purchase, no matter how small, we present you with a ticket with the amount of your purchase stamped on. This card you always bring with you, when you come to the store, and then when your purchases amount in all to \$25 we give you a choice of, 1st—\$2.00 worth of Goods; 2nd—A choice free from our Fine Oil Paintings and Elegant Gilt Frames. 3rd—An Enlarged Crayon Copy of your own Photograph or any one you may choose to bring (on this we charge you wholesale price for the very handsome frame which goes with the portraits) the size of portrait framed is 21x24. 4th—Any one of the large books which may be seen at our store.

SPENCER & PERKINS,

Importers of Dry Goods, Millinery, Mantles and Carpets.

T. L. BROWNE & CO.,

Importers of Men's, Youths' and Boys' Furnishings, Etc.

JOHN HILBERT

UNDERTAKER,

NANAIMO, B. C.

Telephone Call 30.

Post Office Box 16.



BROOKS

SPENCER & PERKINS, NANAIMO, B. C.

PHOTO. NANAIMO



e. It
al Co.
ffer a
f coal
es coal
es this
idents,
derable
s from
resight
ven in
e coal
native
served
reate a
or both
a stock
apside
ip the
for by
of the
x," or
& Co.,
n them
anaimo
Island,
tal for
han in

you in
them.
urchase
in all
legant
n this
21x24.

Etc.



PHOTO. MANAIMO

DEPARTURE BAY, WELLINGTON, B. C.

BROOKS



R. Dunsmuir & Sons
Wellington Collieries

Wellington,

B. C.



Nanaimo Saw Mill



ANDREW HASLAM

MANUFACTURER OF

Rough and Dressed Lumber, Shingles,

Laths and Windows,

Doors.

MOULDINGS AND EVERY DESCRIPTION OF WOOD FINISHING ALWAYS ON HAND.

NANAIMO, B. C.



BROOKS



HASLAM'S SAW MILL.

PHOTO. NANAIMO





PHOTO. NANAIMO

VANCOUVER COAL CO. NO. 1 SHAFT, NANAIMO, B. C.

BROOKS

COAL! COAL!!

THE NEW Vancouver Coal Mining & Land Co., Ltd.

(FORMERLY THE VANCOUVER COAL CO.)

Are the Largest Coal Producers on the Pacific Coast.

Nanaimo Coal.

USED PRINCIPALLY FOR GAS AND DOMESTIC PURPOSES.

Southfield Coal.

STEAM FUEL.

NEW WELLINGTON COAL

HOUSE AND STEAM COAL.

These Coals are mined by this Company only and by Union Labor

THE NANAIMO COAL gives a large percentage of Gas, a high illuminating power, unequalled by any other Bituminous Gas Coals in the world, and a superior quality of Coke.

THE SOUTHFIELD COAL is now used by all the leading Steamship Lines on the Pacific.

THE NEW WELLINGTON COAL which was introduced early in the year, has already become the favorite fuel for domestic purposes. It is a clean, hard coal, makes a bright and cheerful fire, and its lasting qualities make it the most economical fuel in the market.

The several Mines of the Company are connected with their Wharves at Nanaimo and Departure Bay, where ships of the largest tonnage are loaded at all states of the tide. Special dispatch is given to Mail and Ocean Steamers.

SAMUEL M. ROBINS,
Superintendent.

PHOTO. NANAIMO

VANCOUVER COAL CO. NO. 1 SHAFT, NANAIMO, B. C.

BROOKS

HEADQUARTERS FOR BOOTS AND SHOES

THE ONLY EXCLUSIVE

BOOT AND SHOE HOUSE

IN THE CITY.

Try a pair of our Gent's Kangaroo Balmorals and Congress at

ORR & RENDELL'S,

BOOT AND SHOE EMPORIUM,

*Odd Fellows' New Block, Commercial St.,
NANAIMO, B. C.*

THE MOST COMPLETE STOCK OF

MEN'S, BOYS' AND YOUTHS'

CLOTHING.

FURNISHINGS.

HATS AND CAPS.



CHEAPSIDE CLOTHING HOUSE

TRUNKS

AND

VALISES.

JEWELLERY.

ODD FELLOWS' NEW BLOCK,
COMMERCIAL STREET, NANAIMO, B. C.

HOES

gress at

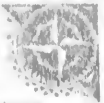
St.,
MO, B. C.

SE

TRUNKS
D

ERY.

MO, B. C.



THOMPSON

COLONIAL HOTEL, NEW WESTMINSTER.

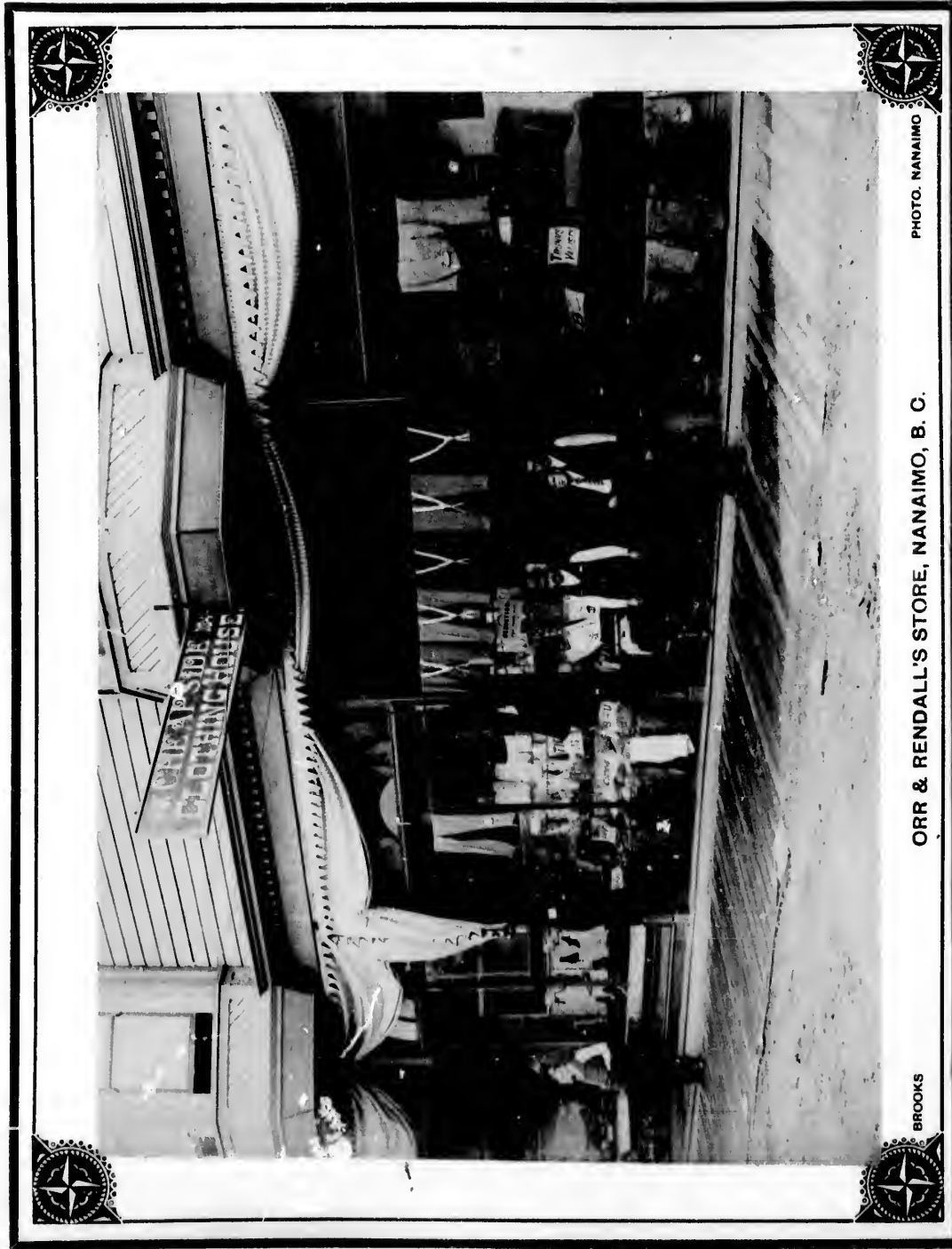


PHOTO. NANAIMO

ORR & RENDALL'S STORE, NANAIMO, B. C.

BROOKS

THE COLONIAL HOTEL,

621 & 623 Columbia Street,

NEW WESTMINSTER.

The accommodation at the above is second to none on the Pacific Coast. Tourists and Visitors receive at all times the utmost courtesy and attention, whilst the best of creature comforts, only are dispensed.

GEORGE R. RAYMOND, - - - PROPRIETOR.

NEW WESTMINSTER.

Situated on the banks of the noble Fraser, with its teeming wealth of fish, lumber, agricultural lands and minerals, say one hour by means of the branch of the C. P. R. of Vancouver, which is called its twin sister. This city has a bright prospect of developing commercial strength, which is fully acknowledged by her citizens. Since the railway connection referred to, her progress has been of a phenomenal character, and to-day it is not too much to say that vigorous as are the trade surroundings of New Westminster there is still to be revealed to the world a vast store of natural resource, which in the future will accentuate her peculiar geographical fitness for such a destiny. There is, besides the Railway communication now in progress, an Electric Car route between Vancouver and New Westminster, which is locally viewed with general satisfaction, and which will be the means of hastening on by legitimate means and all the elements of popularity the closer union of the twin sisters. No one can visit New Westminster without being impressed with its atmosphere of sound commercial life. The writer stayed at the "Colonial Hotel" there and experienced just the ease one likes to feel at the Inn, as well as the comfort and moderate charges. There is an absence, too, of fussiness there which inspires the freedom of home life, and all under the supervision of a genial gentleman. We show a photo of this Hotel, and we also include a photograph of the "McLaren Ross Sawmill Co., Limited," at Millside, about three miles outside New Westminster. This is truly a gigantic establishment and literally unsurpassed in capacity in the Dominion. We believe we are correct in stating that the Mill's capacity reaches to 200,000 feet per day of ten hours. Its buildings are 150 yards long and of proportionate width and roofed in with galvanized iron, and enclose operating power generated by ten boilers of means to drive the enormous engine plant, which are situated in the basement of the Mill. There is a Foundry in New Westminster which does a very improving trade, before referred to in this book, carried on by Reid & Currie. The canneries are numerous on the great waterway running by the city, and will prove a most interesting industry to the visitor who may obtain access to witness the process of canning. The takes of salmon are variable according to the "run," as it is called, and after they are once in the cannery they are prepared and tinned for market in an astonishingly short space of time. There is a feature strikes one in passing through the cannery not altogether without regret, that the Chinese are almost solely employed therein in the various manipulations of the fish, which are in a moderately sized cannery put through to 1000 cases of four dozen one pound tins each daily. Finally, New Westminster is located in the very heart, so to speak, of the lumber and fishing district of the world, and incorporated within an area of six square miles, although a scattered population exists in the surrounding districts. The population is about 10,000 persons, and mostly of the well-to-do and prospering class.

S. T. MACKINTOSH & CO.,

Real Estate, Insurance and Financial Agents,

COLONIAL BLOCK,

NEW WESTMINSTER, BRITISH COLUMBIA,

Have for sale, choice business and residence property in New Westminster City. Farms improved and unimproved throughout New Westminster District. Investments made for non-residents, and returns promptly made. Correspondence Solicited. Information cheerfully given upon application.

For Price and Purity the PIONEER BRAND of
COFFEE and SPICES leads them all.

WM. SHANNON.

OUR SPECIALTY: FARM LANDS
TIMBER LIMITS

CHAS. McLACHLAN.

SHANNON & McLACHLAN,
Real Estate and Financial Agents

GENERAL AGENTS OF THE UNION ASSURANCE SOCIETY.

27 Years' experience in British Columbia.

HASTINGS ST., Opposite Leland Hotel, VANCOUVER, B. C.

— S. P. O. BOX 293.2 —

VANCOUVER.

This city is the Pacific Terminus of the Canadian Pacific Railway, the stupendous and world renowned series of engineering skill and difficulty, which connects in one uninterrupted chain of iron the Atlantic with the Pacific Ocean. It is situated on a peninsula formed by two arms of the sea, between Burrard Inlet and False Creek. It has a very fine harbour, some three miles across, with accommodation for shipping simply unlimited. What is now Vancouver, with its rapid growth and importance, was a few years since called Granville, and it is, in the minds of many persons, a question whether the latter name would not have been the more fit of the two, and thus avoid in the outside world a confusion of names applying to both the mainland as well as the island. Considering that some three or four years only have elapsed since Vancouver consisted of a few primitive abodes and places of business, its progress in the interval has been truly astonishing. The visitor will be surprised to see the bold specimens of architecture, the solid brick and mortar buildings which for the most part are now used for commercial purposes, having associations with all parts of the world in many branches of industry which naturally are stored here for distribution, or brought hither by the great ocean steamers from far off lands. The great, the magnificently equipped leviathans which belong to the C. P. R., called the "Empress" line, all make Vancouver their terminus with their wealth of freight, and periodically display their splendid proportions in the waters of the splendid harbor before referred to. The present value of all kinds of personal property owned in Vancouver at the present time is estimated to be something like \$4,000,000. The total wealth based upon these figures would probably amount to \$16,000,000. Surely such magnificent totals need no comment other than to say that large as they are, they will be quickly passed as the growth is rapidly forward in all departments of commercial enterprise. The saw mills in the district have undoubtedly contributed principally to the great accession of trade in Vancouver, and will always exist amongst its foremost contributors. Again the facilities as a shipping port for the wealth of merchandise which is concentrated there from the mainland. The district tracts of valuable agricultural land, yielding their fruits and produce annually in increasing quantities, the forest treasures, or those from the deep, deep sea, all combine to make staple and solid the future prospects of Vancouver. Apart from the features of contributing substantialities just enumerated, should be mentioned the precious metal department, which reached in value last year from British Columbia, the magnificent total of \$500,000. With all these promising statements, it should be borne in mind that the taxation in Vancouver is low, and does not exceed 1 per cent. on the assessed value, and when it is well understood that any community, especially a young growing one can maintain this state of its affairs, its health is the more likely to be sustained in its stages of advancing life and vitality, and to escape the ailments of financial difficulty or stagnation which frequently are fatal beyond reparation. In writing these few lines it is very much to be desired that no undue prominence shall appear to have been given Vancouver before Victoria or vice versa, because it will be found to be as time goes on, that a common interest is what each city should studiously cultivate for their common good.

REID & CURRIE,

Machinists, Founders & Blacksmiths

MANUFACTURING AND REPAIRING A SPECIALTY.

— AGENTS FOR —

John Doty Engine Co.

A. R. Williams, dealer in all kinds of Machinery.

London Tool Company, manufacturers of Ironwork and Tools.

John Campbell, manufacturer of Hacks, Carriages, Buggies. etc.

Read the Advertisement of the DALLAS HOTEL,

The new Palatial Seaside Hotel facing the Straits of Juan de Fuca.

TYE & CO.,
8, 10, 12 and 14 POWELL ST.

*Importers of Hardware, Iron, Steel,
Glass, Paints, Oils, Brushes, Windows and Doors, Books,
Toys, Linen, Tapes, Oakum, Pitch, Fishing Tackle, etc.*

Vancouver, B. C.

em all.

ACHLAN.

gents

B. C.

of engineering
s situated on a
ur, some three
d growth and
he latter name
g to both the
consisted of a
ll be surprised
now used for
ally are stored
ently equipped
h their wealth
erred to. The
something like
ch magnificent
dly forward in
lly to the great
s as a shipping
ole agricultural
deep, deep sea,
outing substan-
r from British
mind that the
rstood that any
to be sustained
ich frequently
ce shall appear
that a common

miths

Machinery.

es. etc.

de Fuca.

