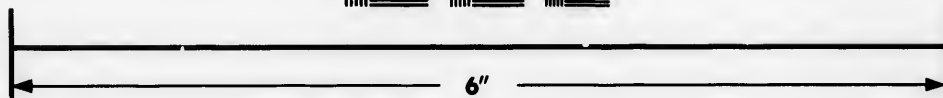
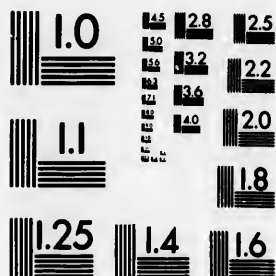


**IMAGE EVALUATION  
TEST TARGET (MT-3)**



**Photographic  
Sciences  
Corporation**

23 WEST MAIN STREET  
WEBSTER, N.Y. 14580  
(716) 872-4503

**CIHM/ICMH  
Microfiche  
Series.**

**CIHM/ICMH  
Collection de  
microfiches.**



**Canadian Institute for Historical Microreproductions / Institut canadien de microreproductions historiques**

**© 1987**

Technical and Bibliographic Notes/Notes techniques et bibliographiques

The Institute has attempted to obtain the best original copy available for filming. Features of this copy which may be bibliographically unique, which may alter any of the images in the reproduction, or which may significantly change the usual method of filming, are checked below.

L'Institut a microfilmé le meilleur exemplaire qu'il lui a été possible de se procurer. Les détails de cet exemplaire qui sont peut-être uniques du point de vue bibliographique, qui peuvent modifier une image reproduite, ou qui peuvent exiger une modification dans la méthode normale de filmage sont indiqués ci-dessous.

- Coloured covers/  
Couverture de couleur
- Covers damaged/  
Couverture endommagée
- Covers restored and/or laminated/  
Couverture restaurée et/ou pelliculée
- Cover title missing/  
Le titre de couverture manque
- Coloured maps/  
Cartes géographiques en couleur
- Coloured ink (i.e. other than blue or black)/  
Encre de couleur (i.e. autre que bleue ou noire)
- Coloured plates and/or illustrations/  
Planches et/ou illustrations en couleur
- Bound with other material/  
Relié avec d'autres documents
- Tight binding may cause shadows or distortion along interior margin/  
La reliure serrée peut causer de l'ombre ou de la distorsion le long de la marge intérieure
- Blank leaves added during restoration may appear within the text. Whenever possible, these have been omitted from filming/  
Il se peut que certaines pages blanches ajoutées lors d'une restauration apparaissent dans le texte, mais, lorsque cela était possible, ces pages n'ont pas été filmées.

- Coloured pages/  
Pages de couleur
- Pages damaged/  
Pages endommagées
- Pages restored and/or laminated/  
Pages restaurées et/ou pelliculées
- Pages discoloured, stained or foxed/  
Pages décolorées, tachetées ou piquées
- Pages detached/  
Pages détachées
- Showthrough/  
Transparence
- Quality of print varies/  
Qualité inégale de l'impression
- Includes supplementary material/  
Comprend du matériel supplémentaire
- Only edition available/  
Seule édition disponible
- Pages wholly or partially obscured by errata slips, tissues, etc., have been refilmed to ensure the best possible image/  
Les pages totalement ou partiellement obscurcies par un feuillet d'errata, une pelure, etc., ont été filmées à nouveau de façon à obtenir la meilleure image possible.

Additional comments:/  
Commentaires supplémentaires:

This copy is a photoreproduction.

This item is filmed at the reduction ratio checked below/  
Ce document est filmé au taux de réduction indiqué ci-dessous.

10X	12X	14X	16X	18X	20X	22X	24X	26X	28X	30X	32X
					/						

The copy filmed here has been reproduced thanks to the generosity of:

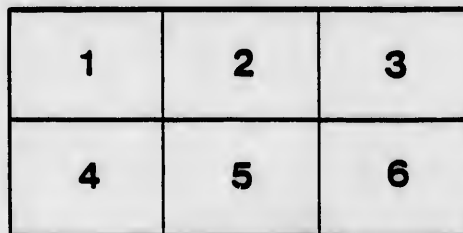
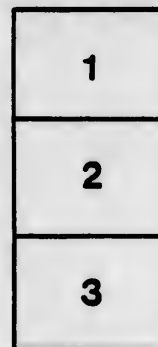
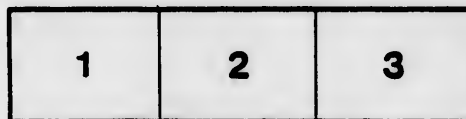
Memorial University, Saint John's, Nfld., which holds a photocopy of the original belonging to Harvard University, Gray Herbarium Library, Cambridge, Mass.

The images appearing here are the best quality possible considering the condition and legibility of the original copy and in keeping with the filming contract specifications.

Original copies in printed paper covers are filmed beginning with the front cover and ending on the last page with a printed or illustrated impression, or the back cover when appropriate. All other original copies are filmed beginning on the first page with a printed or illustrated impression, and ending on the last page with a printed or illustrated impression.

The last recorded frame on each microfiche shall contain the symbol  $\rightarrow$  (meaning "CONTINUED"), or the symbol  $\nabla$  (meaning "END"), whichever applies.

Maps, plates, charts, etc., may be filmed at different reduction ratios. Those too large to be entirely included in one exposure are filmed beginning in the upper left hand corner, left to right and top to bottom, as many frames as required. The following diagrams illustrate the method:



L'exemplaire filmé fut reproduit grâce à la générosité de:

Memorial University, Saint John's, Terre-Neuve possède une photoreproduction de la copie originale de "Harvard University, Gray Herbarium Library, Cambridge, Mass."

Les images suivantes ont été reproduites avec le plus grand soin, compte tenu de la condition et de la netteté de l'exemplaire filmé, et en conformité avec les conditions du contrat de filmage.

Les exemplaires originaux dont la couverture en papier est imprimée sont filmés en commençant par le premier plat et en terminant soit par la dernière page qui comporte une empreinte d'impression ou d'illustration, soit par le second plat, selon le cas. Tous les autres exemplaires originaux sont filmés en commençant par la première page qui comporte une empreinte d'impression ou d'illustration et en terminant par la dernière page qui comporte une telle empreinte.

Un des symboles suivants apparaîtra sur la dernière image de chaque microfiche, selon le cas: le symbole  $\rightarrow$  signifie "A SUIVRE", le symbole  $\nabla$  signifie "FIN".

Les cartes, planches, tableaux, etc., peuvent être filmés à des taux de réduction différents. Lorsque le document est trop grand pour être reproduit en un seul cliché, il est filmé à partir de l'angle supérieur gauche, de gauche à droite, et de haut en bas, en prenant le nombre d'images nécessaire. Les diagrammes suivants illustrent la méthode.

IRE

FEL

MEMO  
OF NE

F

x from



A LIST

OF THE

# FLOWERING PLANTS & FERNS

OF

## NEWFOUNDLAND

WITH METEOROLOGICAL OBSERVATIONS

BY

HENRY REEKS, F.L.S. E.Z.S.,

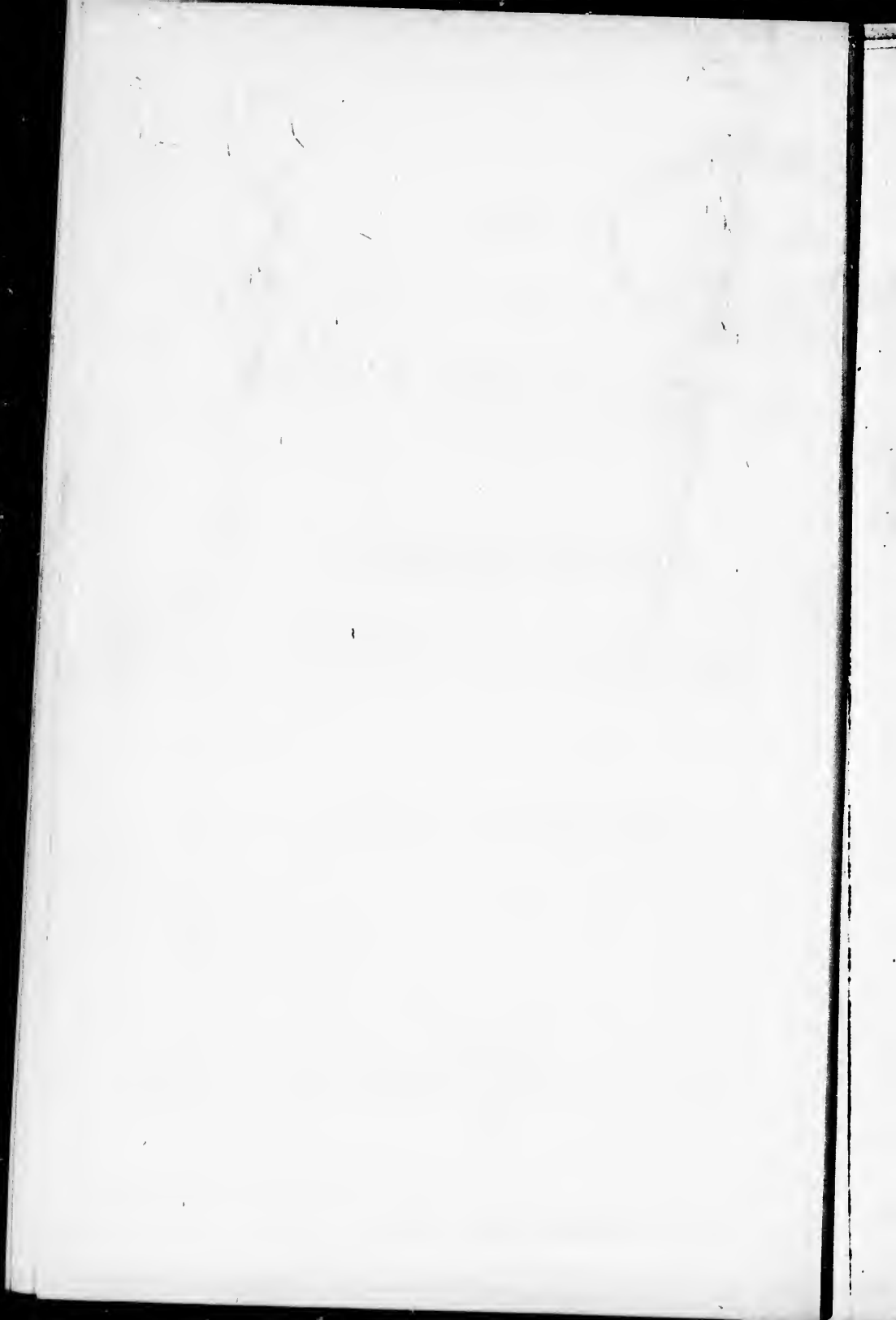
&c., &c.

NEWBURY:

PRINTED BY BLACKET AND SON, 34, NORTHBROOK STREET,

1873.

x from Harvard University. Gray Herbarium Library.



1894, July 16.

Botanic Garden.



## NOTES ON THE FLORA OF NEWFOUNDLAND,

[READ BEFORE LINNEAN SOCIETY, DECEMBER 2, 1869.]

THE following list of Flowering Plants and Ferns was compiled during an ornithological trip to Newfoundland from August, 1866 to August, 1868.—and perhaps owes its origin almost entirely to a sick bed, on which I spent many months suffering from a very severe frost bite, which leaves me partially a cripple to this day. That this list has no other faults than those of omission. I am far from thinking; in fact perhaps its only merit consists in its originality, for at present I am not aware of the existence of any other list extant; although I know that small collections of plants have been sent or brought home from time to time. The specimens for the most part were kindly brought me by the settlers or their children, and under such circumstances, as one may naturally suppose, were generally of the most wretched description. Again others were identified, or supposed to be, when I was so weak as scarcely to be able to sit up sufficiently long to examine them; and added to this not having my press or drying paper with me the specimens were generally thrown aside after examination, or placed between the leaves of a book, whence they often got lost.

Three hundred and seventy-one species besides varieties have been enumerated. Of these six, besides *Calluna vulgaris* and *Botrychium Lunaria* are new to the flora of North America, while three of them, to which I have provisionally given names, appear not to have been previously described, viz:—*Viola Burtonii*, *Euphrasia purpurea* and *Iris biflora*. Professor C. Dewey, D.D., gives 186 species of *Carex* for North America, but I have only identified 29 in Newfoundland; also but 38 Grasses of the 258 said to grow in the United States and Canada. The Classification and Nomenclature are taken from Professor A. Wood's "Class Book of Botany," published by A. S. Barnes and Co., New York, 1866.

## A LIST OF THE FLOWERING PLANTS AND FERNS.

Marked \* are not included in Hooker's "Flora Borealis Americana."

Jan 21/85

### RANUNCULACEÆ.

- Anemone narcissiflora* *A. parviflora*  
*Thalictrum dioicum* *T. confine*  
 " *cornuti*  
 " *alpinum*  
 Ranunculus *acris*  
 " *sceleratus*  
*Caltha palustris*  
*Coptis trifolia*  
*Aconitum Napellus* (introduced)  
 \* *Cimicifuga racemosa*  
 \* *Actæa spicata* (fl. June—July)

### NYMPHEACEÆ.

- Nymphaea odorata*: rare?  
*Nuphar advena* (Beaver-root)

### SARRACENIACEÆ.

- Sarracenia purpurea* (Indian-pipes)

### CRUCIFERÆ.

- Arabis hirsuta* = *A. alpina*  
 " *canadensis*?  
*Sisymbrium officinale*  
 " *canescens*  
*Draba verna* = *D. lucana*  
*Capsella Bursa-pastoris*

### VIOLACEÆ.

- Viola blanda*  
 \* " *Burtonii* n. sp.? Agrees with  
*V. blanda* except in having the  
 lateral petals *bearded*, and the  
 upper petal *only* beautifully veined  
 with *purple*. Fragrant. May—  
 June.  
*Viola cucullata*  
 " *canadensis*

### DROSERACEÆ.

- Drosera rotundifolia*

### CARYOPHYLLACEÆ.

- Cerastium vulgatum*  
 " *viscosum* = *Barbarea*  
*Stellaria media*  
 " *borealis*  
*Arenaria lateriflora*  
*Alsine stricta* = *Arenaria* *latifolia*  
 " *Greenlandica* *var. p. p.*  
*Sagina nodosa*  
*Honkenya peploides*  
*Spargula arvensis*  
 \* *Paronychia canadensis*  
 \* *Scleranthus annuus*  
*Mollugo verticillata*?

### BALSAMINACEÆ.

- Impatiens fulva*

### ACERACEÆ.

- Acer Pennsylvanicum*  
 " *spicatum*  
 N.B.—The genus *Acer* is not  
 found on the island so far  
 north as Cow Head.

### LEGUMINOSÆ.

- Pisum sativum* (cultivated)  
*Lathyrus palustris*  
 " *maritimus*  
*Hedys'arum boreale*  
*Trifolium repens*  
 " *pratense* (introduced)

### ROSACEÆ.

- Sanguisor'ba canadensis*  
*Cerasus Pennsylvanica* (from Bonne  
 Bay South)  
*Amelan'chior canadensis*  
*Pyrus Americana*  
*Rosa lucida*  
 " *carolina*  
*Agrimonia Eupatoria*

C. ...

- ? *Géum triflorum*  
 " *rivale*  
 " *macrophyllum*  
*Rubus hispídus*  
 " *arcticus*. Cow Head; com-  
 mon. N.B.—New to the Flora  
 of N. America.  
 ? *Rubus canadensis*  
 " *Chamædrus*  
 " *strigosus*  
 " *triflorus*  
*Fragaria virginiana*  
 " *vesca*?  
*Cómarum palústro*  
*Potentilla Norvègica*  
 " *argentea*. *pacifica*?  
 ? *Spiræa tomentosa*  
 " *calicifolia*

## ONAGRACEÆ.

- Epilóbium angustifolium*, (an abun-  
 dant and troublesome weed, called  
 "blood-vine" by the settlers.)  
 " *alpinum* = *hermaphroditum*  
 " *palústro*  
 " *tetrágonum* = *stenocaulis*  
*Circæa alpina*  
*Myriophyllum verticillátum*  
 " *tonéllum*  
*Hippuris vulgaris* (near Bonne Bay:  
 rare?)

## GROSSULACEÆ.

- Ribes lacústro*  
 " *hirtéllum*  
 " *oxycanthoides*  
 " *rubrum*  $\beta$  (white fruit.) In-  
 troduced.

## CRASSULACEÆ.

- ? *Penthorum sedoides* = *Sedum*

## SAXIFRAGACEÆ.

- Mitella nuda*  
 N.B.—This species is common at  
 Cow Head, N.F.L., but I did  
 not meet with the more com-  
 mon species (*M. diphylla*).

## UMBELLIFERÆ.

- Sanicula canadensis* = *S. marylandica*  
*Heracleum lanatum*

- Archangelica officinalis*, introduced?  
 \* " *peregrina*.  
 \* *Daucus carota* (introduced)

## ARALIACEÆ.

- Aralia nudicaulis*  
 " *racemosa*

## CORNACEÆ.

- Cornus canadensis*  
 " *sericea*?  
 " *paniculata*?  
 " *stolonifera*  
 " *suecica*—Common at Cow  
 Head. Flowers in July. New  
 to the Flora of N. America.

## CAPRIFOLIACEÆ.

- Linnæa borealis*, (abundant)  
*Lonicera cœrulea*  
*Sambucus pubens*  
 N.B.—This plant does not appear  
 to grow north of Rocky Har-  
 bour, or perhaps Lobster Cove  
 (49° 33' N.L.)  
 \* *Viburnum Opulus*  
 \* " *pauciflorum*

## RUBIACEÆ.

- Galium boreale*?  
 " *asprellum*  
*Mitchella repens*

## COMPOSITEÆ.

- Aster puniceus*  
*Erigeron canadense*?  
 " *Philadelphicum*?  
*Solidago canadensis*  
 " *altissima*  
 " *arguta*?  
*Achillea Millefólium*  
*Leucanthemum vulgare*  
*Tanacetum vulgare* (introduced)  
*Antennaria margaritacea*  
 " *plantaginifolia*?  
*Senecis aureus*  
 \* *Centaurea Cyanus* (introduced)  
*Cirsium muticum*  
*Nabalus altissimus*  
 " *albus*  
*Taraxacum Dens-leonis*

CAMPANULACEÆ.

*Campanula rotundifolia*

N.B.—The Newfoundland variety (?) of this plant differs from the European form in being much less branched, with fewer, but much larger flowers; average specimens of which measure 1 inch long by 1 inch 2 lines wide, and are much more pentagonal in form. The plant is called 'thimble-flower' in Newfoundland.

ERICACEÆ.

*Gaylussacia resinosa*

*Vaccinium cespitosum*

" *Canadense*

" *Pennsylvanicum*

" *corymbosum*

*Oxycoccus palustris*

" *macrocarpum*

*Chiogetes hispida*

*Kalmia glauca*

*Epigaea repens*

*Arctostaphylos Uva-ursi*

? *Gaultheria procumbens*

*Andromeda polifolia glaucophylla*

" *calyculata*

*Ledum palustre*

*Pyrrola secunda*

" *minor*

" *chlorantha*

*Moneses grandiflora*

? *Chimaphila umbellata* ?

*Monotropa uniflora*

" *Hypopitys*

*Calluna vulgaris*

N.B.—Through the kindness of the Bishop of N.F.L., I have recently received a liberal supply of this plant in flower. The specimens were gathered near Capelin Bay in about 47° N.L., and 53° West long. All the known localities for this plant in N.F.L. appear to be in about the same latitude, and between 53°—54° west longitude! viz., "Head of St Mary's Bay and Trepassoy Bay," (Mr. W. E. Cormack).

Professor Geo. Lawson, in Transactions of Nova Scotia Institute of Nat. Science records having gathered *Calluna vulgaris* on Ulston Farm, St. Anns Bay, Cape Breton Island. It has also been gathered at Tewksbury, Massachusetts.

PRIMULACEÆ.

*Primula mistassinica* } both  
" *farinosa* } common.  
*Trientalis Americana*  
*Samolus valerandi* ?

PLANTAGINACEÆ.

*Plantago major* (Introduced?)  
" *lanceolata* = *decapetala*

PLUMBAGINACEÆ.

*Statice limonium*  
*Arméria vulgaris* (rare?)

LENTIBULACEÆ.

*Pinguicula vulgaris*  
*Utricularia intermedia*  
\* " *minor*  
" *vulgaris*  
" ? *subulata* } rare?  
" *cornuta* }

OROBANCHACEÆ.

*Conopholis americana*  
*Aphyllon uniflora*

SCROPHULARIACEÆ.

*Veronica Anagallis americana*  
" *scutellata*  
" *serpyllifolia*  
*Castilleja septentrionalis*  
*Pedicularis Canadensis* ?  
*Rhinanthus Crista-galli*  
*Euphrasia officinalis*, common form.  
" *purpurea*, n. sp.? This form of eyebright occurs in considerable patches on the sea coast at Cow Head, N.F.L., and is readily distinguished when growing by its being much smaller proportionally in all its parts, and by its dark purple flowers. (*E. gracilis*? Fries.)

roduced? ?

)

at Cow  
y. New  
rica.

nt)

not appear  
Rocky Har-  
bster Cove

a ?

roduced)

lia

roduced)

ca

## LABIATÆ.

- Mentha viridis  
 " Canadensis  
 Brunella vulgaris  
 Scutellaria galericulata  
 " lateriflora

## BORRAGINACEÆ.

- Mertensia maritima  
 Echinopermum Lappula  
 Cynoglossum officinalis } rare!  
 " Morrissoni }

## GENTIANACEÆ.

- Gentiana crinita = serrata  
 " Andrewsii ?  
 " Amarella  
 N.B.--This last is common among  
 short grass at Cow Head,  
 N.F.L., and is new to the  
 flora of N. America. (G. acuta  
 of Michx.?)

- Halenia deflexa  
 Menyanthes trifoliata

## OLEACEÆ.

- Fraxinus Americana = nigra  
 N.B.—North as far as Bonne  
 Bay, N.F.L.  
 " pubescens? Bonne Bay.

## POLYGONACEÆ.

- Oxyria reniformis  
 Rumex crispus  
 " verticillatus = *Scleranthus*  
 " Acetosella  
 Polygonum aviculare  
 " hydro-piperoides } same?  
 " Hydro-piper }  
 " amphibia  
 " viviparum

## CHENOPODIACEÆ.

- Blitum capitatum

## SANTALACEÆ.

- Comandra umbellata = *C. divida*

## URTICACEÆ

- Urtica procera = *Sagittaria*?  
 " dioica (Introduced?)

## EMPETRACEÆ.

- Empetrum nigrum  
 \*Corema Conradii (rare?)

## CUPULIFERÆ.

- Corylus Americana ?  
 " rostrata (rare?)

## BETULACEÆ.

- Betula excelsa, (North to Bonne  
 Bay.)  
 " lenta, rare at Cow Head. ?  
 \* " nigra ?  
 " papyracea  
 " pumila  
 Alnus incana  
 " serrulata = *mill.*

## MYRICACEÆ.

- Myrica Gale

## SALICACEÆ.

- Salix purpurea  
 " longifolia  
 " repens  
 " herbacea  
 " lucida  
 Populus balsamifera  
 " canadensis

## CALLITRICHACEÆ.

- Callitriche verna

## CONIFERÆ.

- Pinus strobus  
 \* " mitis ?  
 " resinosa  
 " Banksiana ?  
 Abies balsamea  
 " alba  
 " rubra  
 " nigra  
 Larix Americana  
 Juniperus communis  
 " prostrata, (common)

## TAXACEÆ.

- Taxus Canadensis

## TYPHACEÆ.

- Typha latifolia*  
 \* *β* *angustifolia*  
*Spar'ganum ramòsum*  
 " *nàtans*

## NAIADACEÆ.

- Zannichèl'lia palustris*  
 \* *Zostera marina*  
*Ruppia maritima*

## ALISMACEÆ.

- Alis'ma plantàgo*  
*Sagittaria variàbilis*  
*Triglòchin palustre*

## ORCHIDACEÆ.

- \* *Cypripèdium càndidum*  
 " *spectàbilis*  
 " *acaulè*  
 " *arietinum*  
*Platanthera hyperborea*  
 " *Paycòdes*  
*Lis'tera cordàta*  
 " *convallarioides*  
*Spiran'thes gràcilis*  
 " *cèrnua*  
 \* " *latifolia*  
*Pogònia ophioglossoides*

## IRIDACEÆ.

- Iris versicolor*  
 " *biflòra*, Not Linn, n. sp.? Two  
 flowered *Iris*. Leaves linear,  
 shorter than the smooth round  
 stem which is 8-10 inches high,  
 and bears two light purple  
 flowers, one of which withers  
 before the other expands. Pe-  
 tals very small, linear-lanceolate.  
 Flowers in June. Common at  
 Cow Head, N.F.L. amongst short  
 grass. Said by Prof. Babington  
 to resemble *I. Virginica*.

*Sisyrinchium Bermudianum*?

N.B.—I see no difference between  
 this plant and the European  
*S. anceps*: I have never been  
 able to gather a specimen in  
 which the longer valve of the  
 spathe did *not overtop* the  
 flowers; although it is said *not*  
 to do so in *S. Bermudianum*.

## LILIACEÆ.

- Allium schònopràsium* (cultivated)  
*Polygonatùm multiflòrum*  
 " *pubescens*  
*Clintonia borealis*  
*Smilacina stellàta*  
 " *trifolià*  
*Majan'themum biflòrium*  
*Prosar'tes lanuginòsa*

## JUNCACEÆ.

- Lúzula pilosa*  
 " *campestris*  
*Jun'cus effùsus*  
 " *scirpoides*  
 \* " *débilis*  
 \* " *acuminátus*  
 \* " *cónradi*  
 " *bufonius*  
 " *ténuis*  
 \* " *bull'òsus*

## CYPERACEÆ.

- Cypèrns inflexus*  
 \* *Eleocharis tenuis*  
 " *obtusa*  
*Scir'pus lacustris*  
 " *pungens*  
 " *Eriophorum*  
*Eriophòrum vaginatum*  
 " *Virginicum*  
 " *polystachyon*  
 " *gracile*  
*Rhynchos'pora glomerata*  
 \* *Cladium mariscoides*  
*Carex distycha*  
 " *muricata* —  
 " *retroflexa* —  
 " *stipata* —  
 " *mirabilis* —  
 " *scoparia* —  
 " *cæspitosa*  
 " *stricta* —  
 " *argustata*  
 " *aquatilis* —  
 " *maritima* —  
 " *salina* —  
 " *obtusata* —  
 " *Backii* —  
 " *Buxbaumii* —  
 \* " *formosa*  
 " *pubescens*

o Bonne  
 w Head. ?

E.

mon)

- Carex flava —
- " plantaginea —
- " laxiflora —
- " debilis —
- " areolata —
- " Richardsonii —
- " subulata —
- " hystericina —
- " comosa —
- " filiformis —
- " Schweinitzii —
- " lacustris —

GRAMINEÆ.

- Loeria oryzoides (rare ?)
- " Virginica
- Zizania aquatica
- Agrostis vulgaris
- " scabra
- Cinna pendula
- Alopecurus pratensis
- " geniculatus
- Phleum pratense (cultivated)
- Oryzopsis asperifolia
- Panicum depanperatum
- " dichotomum
- " lanuginosum
- Phalaris arundinacea
- Anthoxanthum odoratum (introd.)
- Hierochloa borealis
- Alra flexuosa
- " cespitosa
- Danthonia spicata
- Bromus ciliatus
- Dactylis glomerata (introduced)
- Festuca duriuscula
- " pratensis (introduced)
- Eatonia Pennsylvanica
- Poa annua
- " laxa
- " compressa
- " serotina
- " trivialis
- " pratensis
- Glyceria aquatica

- Glyceria Canadensis
- " maritima
- Briza media (introduced)
- Elymus Hystrix
- Lolium perenne (introduced)
- Triticum repens (introduced)
- Spartina juncea
- " alternifolia

LYCOPODIACEÆ.

- Lycopodium clavatum
- " complanatum
- " dendroideum
- " annotinum
- " lucidulum

EQUISETACEÆ.

- Equisetum sylvaticum
- " limosum
- " hyemale

FILICES.

- Botrychium lunaria ?
- N.B.—The Newfoundland plant appears to come nearer *B. lunaria* than to either of the described N. American species, and will therefore, I think, prove new to the Flora of that country.
- Osmunda regalis (rare ?)
- " cinnamomea (rare ?)
- " Claytoniana (rare ?)
- Polypodium vulgare
- Struthiopteris Germanica
- Pteris gracilis
- Adiantum pedatum (rare ?)
- Asplenium Felix-femina
- Woodsia ilvensis (rare ?)
- Cistopteris fragilis
- Aspidium acrostichoides
- " marginale
- " Thelyptera
- " Novaboracense } same ?

## METEOROLOGICAL OBSERVATIONS. \*

1867.			1868.		
Jan.		DEG.	Jan.		DEG.
1	7 a.m. fine, wind S ..	5	1	7 a.m. fine, wind W ..	-2
	12 " " " S ..	22	12	snowing, " W ..	10
	6 p.m. " " S ..	15	6 p.m.	" " W ..	12
	A beautiful day, wind moderate; mean temperature for the day ..	13 5		A good breeze all day; mean temperature for the day ..	5 0
2	7 a.m. fine, wind S ..	6	2	7 a.m. snowing, wind E ..	20
	12 dull, cloudy, S ..	28	12	drifting, " SE ..	26
	6 p.m. light snow, SSE ..	22	6 p.m.	snowing, " NE ..	28
	Wind moderate all day; mean temperature ..	17 0		Wind rough a.m., moderate p.m.; mean temperature ..	24 0
3	7 a.m. fine, wind NNE ..	12	3	7 a.m. snowing, wind NE ..	12
	12 " " N ..	24	12	fine, " NE ..	12
	6 p.m. " " NNW ..	16	6 p.m.	snowing " N ..	8
	Wind moderate but variable; mean temperature ..	18 0		Wind moderate all day; mean temperature ..	10 0
4	7 a.m. fine, wind NNW ..	14	4	7 a.m. fine, wind NW ..	4
	12 " " N ..	17	12	snowing, " NW ..	8
	6 p.m. " " NNW ..	16 0	6 p.m.	fine, " NW ..	8
	Wind moderate, occasionally varying to NNE; mean temperature ..	15 5		Wind moderate, almost calm; mean temperature ..	6 0
5	7 a.m. fine, wind NW ..	19 0	5	7 a.m. 'vapoury.'† wind NW	Zero
	12 dull, cloudy, N ..	14	12	light snow " NW	5
	6 a.m. " " N ..	10	6 p.m.	snowing " WNW	7
	Wind moderate but cold; mean temperature ..	14 5		Moderate a.m., good breeze p.m.; mean temperature ..	3 5
6	7 a.m. light snow, wind WNW	7	6	7 a.m. snowing, wind SW	20
	12 " " " WNW	14	12	" " " S	23
	6 p.m. " " " WNW	10	6 p.m.	" " " NE	20
	Wind moderate all day; mean temperature ..	10 5		Wind moderate but variable; mean temperature ..	21 5
7	7 a.m. dull, cloudy, wind SE	42	7	7 a.m. snow and drift, wind N	30
	12 " " " SE	41	12	" " " N	30
	6 p.m. " " " SE	28	6 p.m.	" " " N	28
	Wind boisterous all day; mean temperature for the day ..	40 0		A gale of wind and heavy fall of snow; mean temperature for the day ..	29 0
	Ditto " for the week ..	18 5		Ditto ditto for the week	14 1
8	7 a.m. fine, wind SSW ..	37	8	7 a.m. 'Glitter,' wind ENE	26
	12 " " " SSW ..	40	12	drift ice in sight " NE	26
	6 p.m. " " " SSW ..	32	6 p.m.	fine " NE	25
	A beautiful day, wind moderate; mean temperature of the day ..	34 0		A good breeze a.m., moderate p.m.; mean temperature ..	25 5

\* The mean temperature as here taken will not be quite correct, but I rarely saw the thermometer except during the hours for meals. H. R.

† " Vapoury," a kind of " Scotch Mist." " Glitter;" rain freezing and coating everything with a layer of ice. H. R.



1867.

1868.

Jan.		DEO.
9	7 a.m. fine, wind SSW	28
	12 cloudy, " SSW	38
	6 p.m. light snow " SSW	32
	Wind moderate all day; mean temperature ..	33 0
10	7 a.m. fine, wind SSW	32
	12 " " " SSW	34
	6 p.m. " " " SSW	32
	A fine day, wind moderate; mean temperature..	33 0
11	7 a.m. dull, cloudy, wind S	26
	12 " " " S	32
	6 p.m. " " " S	30
	Wind moderate all day; mean temperature ..	29 0
12	7 a.m. 3-in. of snow, wind W	29
	12 light snow " W	28
	6 p.m. snowing " W	28
	Wind moderate all day; mean temperature ..	28 5
13	7 a.m. light snow, wind SW	18
	12 fine " SW	21
	6 p.m. light snow, " SW	16
	Wind moderate all day; mean temperature ..	18 5
14	7 a.m. snowing, wind NNW	14
	12 2-ft. of snow " NNW	21
	6 p.m. snowing, " NNW	15
	Wind moderate all day; mean temperature ..	17 5
	Ditto ditto for the week	27 5
15	7 a.m. snowing, wind SW	12
	12 light snow " SW	15
	6 p.m. snowing, " SW	11
	A light breeze all day; mean temperature ..	13 0
16	7 a.m. snowing, wind E	11
	12 " " " N	14
	6 p.m. " " " NW	9
	Wind moderate all day; mean temperature ..	11 5
17	7 a.m. fine, wind NW	9
	12 " " " NW	8
	6 p.m. " " " NW	4
	A fine day, wind moderate; mean temperature ..	6 5
18	7 a.m. drifting snow, wind SE	21
	12 fine, " S	25
	6 p.m. " " " S	18
	Wind boisterous all day; mean temperature ..	21 5
19	7 a.m. fine, wind SE	36
	12 " " " SE	42
	6 p.m. " " " SE	38
	A warm, sunny day; mean temperature ..	39 0
20	7 a.m. fine, wind SE	38
	12 " " " SE	39
	6 p.m. " " " E	37
	Wind rough a.m., moderate p.m.; mean temperature	38 0

Jan.		DEO.
9	7 a.m. fine, wind SSW	23
	12 " " " SW	27
	6 p.m. "Glitter," " SW	24
	Wind very moderate, almost calm; mean temperature ..	25 0
10	7 a.m. fine, wind S	19
	12 snowing " E	24
	6 p.m. " " " N	22
	Wind moderate but very variable; mean temperature ..	21 0
11	7 a.m. snow and drift, wind W	10
	12 " " " W	10
	6 p.m. " " " W	8
	Snowing and blowing a gale all day; mean temperature ..	9 0
12	7 a.m. snow and drift, wind W	10
	12 " " " W	12
	6 p.m. " " " W	10
	A very rough snowy day; mean temperature ..	11 0
13	7 a.m. fine, wind N	20
	12 " " " NW	15
	6 p.m. " " " NW	12
	A beautiful day, wind moderate; mean temperature ..	16 0
14	7 a.m. light snow, wind N	8
	12 " " " N	7
	6 p.m. " " " N	4
	Wind moderate all day; mean temperature ..	6 0
	Ditto ditto for the week	16 2
15	7 a.m., fine, wind N	2
	12 light snow " N	3
	6 p.m. " " " S	4
	Wind moderate a.m.: almost calm p.m.; mean temperature	3 0
16	7 a.m. fine, wind SE	-4
	12 " " " SE	14
	6 p.m. snowing " SE	8
	Almost calm throughout the day; mean temperature ..	5 0
17	7 a.m. snowing, wind SE	10
	12 " " " NE	13
	6 p.m. " " " NE	14
	A snowy day but almost calm; mean temperature ..	14 0
18	7 a.m. snowing, wind S	19
	12 " " " WNW	22
	6 p.m. " " " NW	12
	Almost calm a.m.: good breeze p.m.; mean temperature ..	17 0
19	7 a.m. drift ice in, wind W	10
	12 snowing, " W	17
	6 p.m. " " " W	14
	Wind moderate all day; mean temperature ..	13 5
20	7 a.m. fine, wind NW	4
	12 light snow " NW	8
	6 p.m. " " " NW	2
	Moderate a.m.: almost calm p.m.; mean temperature ..	5 0

1867.

1868.

DEG.  
 d SSW 23  
 SW 27  
 SW 24  
 almost  
 ture .. 25 0  
 wind S 13  
 " E 24  
 " N 22  
 variable;  
 .. 21 0  
 wind W 10  
 " W 10  
 " W 8  
 gale all  
 re .. 9 0  
 wind W 10  
 " W 12  
 " W 10  
 ; mean  
 .. 11 0  
 d N 20  
 , NW 15  
 , NW 12  
 derate;  
 .. 16 0  
 wind N 8  
 " N 7  
 " N 4  
 ; mean  
 .. 6 0  
 e week 16 2  
 wind N 2  
 " N 3  
 " S 4  
 almost  
 erature 3 0  
 ind SE -4  
 " SE 14  
 " SE 8  
 he day;  
 .. 5 0  
 ind SE 10  
 " NE 13  
 " NE 14  
 calm;  
 .. 14 0  
 S 19  
 WNW 22  
 NW 12  
 breeze  
 .. 17 0  
 ind W 10  
 " W 17  
 " W 14  
 ; mean  
 .. 13 5  
 d NW 4  
 NW 8  
 NW 2  
 calm  
 .. 5 0

Jan. DEG. Jan.  
 21 7 a.m. fine, wind E 35  
 12 " " " E 37  
 6 p.m. " " E 36  
 A beautiful day, wind moderate;  
 mean temperate .. 35 0  
 Ditto ditto for the week 23 0  
 22 7 a.m. fine, wind SSW 29  
 12 " " " SSW 34  
 6 p.m. " " SSW 27  
 A fine day, wind temperate;  
 mean temperature .. 30 5  
 23 7 a.m. fine, wind E 31  
 12 " " " E 32  
 6 p.m. " " E 30  
 Blowing a good breeze all day;  
 mean temperature .. 31 0  
 24 7 a.m. fine, wind NE 13  
 12 cloudy, " N 20  
 6 p.m. snowing " N 50  
 Blowing a good breeze all day;  
 mean temperature .. 16 5  
 25 7 a.m. dull, cloudy, wind N 23  
 12 light snow, " N 25  
 6 p.m. fine, " N 25  
 Wind moderate all day; mean  
 temperature .. 24 0  
 26 7 a.m. fine, wind NW 17  
 12 light snow " NW 19  
 6 p.m. " " " NW 13  
 Wind moderate all day; mean  
 temperature .. 16 0  
 27 7 a.m. Driftingsnow, wind SSE 20  
 12 " " " SSE 25  
 6 p.m. snowing " SE 28  
 Wind boisterous a.m., moderate  
 p.m.; mean temperature 24 0  
 28 7 a.m. snowing, wind N 26  
 12 fine, " N 29  
 6 p.m. snowing, " N 23  
 A good breeze, a.m., moderate  
 p.m.; mean temperature .. 26 0  
 Ditto ditto for the week 24 0  
 29 7 a.m. light snow, wind W 23  
 12 " " " W 33  
 6 p.m. drifting snow " W 19  
 Moderate, a.m.: good breeze,  
 p.m.; mean temperature .. 26 0  
 30 7 a.m. drifting snow, wind NW 7  
 12 " " " NW 5  
 6 p.m. " " " NW -4  
 Blowing a good breeze all day;  
 mean temperature .. 1 5  
 31 7 a.m. drifting snow, wind NW -15  
 12 " " " NW -5  
 6 p.m. " " " W 7  
 Blowing a good breeze all day;  
 mean temperature .. -4 0  
 Ditto for January, 1867 16 4

DEG.  
 21 7 a.m. fine, wind E-12  
 12 " " " E 3  
 6 p.m. " " S Zero  
 A lovely day and almost calm;  
 mean temperature .. -4 5  
 Ditto ditto for the week 7 5  
 22 7 a.m. fine, wind E-10  
 12 " " " E 4  
 6 p.m. " " E -2  
 A beautiful day, wind moderate;  
 mean temperature .. -3 0  
 23 7 a.m. fine, wind S -13  
 12 " " " S 8  
 6 p.m. " " SW 4  
 A lovely day, wind moderate;  
 mean temperature .. -2 5  
 24 7 a.m. snowing, wind SSW 32  
 12 snow & rain " SSW 36  
 6 p.m. foggy " S 30  
 Wind very rough a.m.: moderate  
 p.m.; mean temperature 33 0  
 25 7 a.m. snowing, wind S 30  
 12 drifting, " WNW 23  
 6 p.m. light snow " NW 12  
 Blowing a good breeze all day;  
 mean temperature .. 21 0  
 26 7 a.m. snowing, wind NW 1  
 12 " " " NW 6  
 6 p.m. " " WNW -2  
 Blowing a good breeze all day;  
 mean temperature .. 2 0  
 27 7 a.m. fine, wind S -9  
 12 " " " NE 4  
 6 p.m. snowing " S 8  
 Almost calm a.m.: more wind  
 p.m.; mean temperature -0 5  
 28 7 a.m. snowing, wind S 27  
 12 drifting, " NE 19  
 6 p.m. fine, " NE 14  
 A good breeze a.m.: moderate  
 p.m.; mean temperature .. 20 5  
 Ditto ditto for the week 10 0  
 29 7 a.m. fine, wind E -9  
 12 " " " E 8  
 6 p.m. " " E 4  
 A lovely day and almost calm;  
 mean temperature .. -0 5  
 30 7 a.m. snowing, wind E 16  
 12 " " " E 23  
 6 p.m. " " NW 19  
 Heavy fall of snow, but almost  
 calm; mean temperature .. 19 5  
 31 7 a.m. drifting snow, wind W 4  
 12 " " " W 8  
 6 p.m. " " WNW 9  
 Blowing a good breeze all day;  
 mean temperature .. 5 0  
 Ditto ditto for January, 1868 11 3

Feb.	1867.	DEG.
1	7 a.m. light snow, wind WSW	23
	12 " " " SW	35
	6 p.m. raining, " S	38
	Wind moderate, a.m.: boisterous, p.m.; mean temperature	29 5
2	7 a.m. drifting snow, wind N	16
	12 " " " WNW	13
	6 p.m. " " " WNW	14
	Wind boisterous a.m.: good breeze p.m.; mean temperature	14 5
3	7 a.m. fine, wind W	10
	12 dull, cloudy, " ESE	23
	6 p.m. raining, " SE	32
	Almost calm a.m.: boisterous p.m.; mean temperature	21 0
4	7 a.m. raining, wind SW	38
	12 fine, " SW	40
	6 p.m. raining " SW	36
	Moderate a.m., boisterous p.m.; mean temperature	38 0
	Ditto ditto for the week	18 0
5	7 a.m. light snow, wind WNW	30
	12 fine, " WNW	27
	6 p.m. light snow " S	24
	Wind moderate all day; mean temperature	27 0
6	7 a.m. snowing, wind E	34
	12 light snow, " W	36
	6 p.m. fine, " NE	26
	Wind very boisterous before daylight; mean temperature	31 0
7	7 a.m. fine, wind N	10
	12 " " " NW	26
	6 p.m. light snow " W	27
	Wind moderate all day; mean temperature	18 5
8	7 a.m. fine, wind NW	25
	12 " " " NW	25
	6 p.m. " " " NW	24
	A lovely day, wind moderate; mean temperature	24 5
9	7 a.m. cloudy, wind WNW	24
	12 " " " W	38
	6 p.m. raining " SSW	49
	Wind moderate a.m.: boisterous p.m.; mean temperature	36 5
10	7 a.m. raining, wind SW	50
	12 fine, " WSW	61
	6 p.m. raining, " W	53
	Wind very boisterous throughout the day; mean temperature	58 5
11	7 a.m. light snow, wind NW	8
	12 " " " NW	5
	6 p.m. " " " NW	6
	Moderate breeze throughout the day; mean temperature	6 0
	Ditto ditto for the week	29 1
12	7 a.m. light snow, wind SE	6
	12 " " " E	22
	6 p.m. " " " S	20
	Wind moderate all day; mean temperature	14 0

Feb.	1868.	DEG.
1	7 a.m. snowing, wind E	10
	12 drifting, " W	16
	6 p.m. " " " W	8
	Moderate a.m., good breeze p.m.; mean temperature	12 0
2	7 a.m. drifting snow, w. WSW	20
	12 " " " WSW	26
	6 p.m. " " " WSW	24
	Blowing a gale of wind till evening; mean temperature	23 0
3	7 a.m. fine, wind NE	-9
	12 snowing, " NE	-6
	6 p.m. 'vapoury,' " N	-10
	Wind moderate but very cold; mean temperature	-8 0
4	7 a.m. fine, wind W	-20
	12 'vapoury,' " W	-4
	6 p.m. light snow, " WSW	Zero
	Blowing a good breeze and very cold; mean temperature	-10 0
	Ditto ditto for the week	5 8
5	7 a.m. fine, wind W	-9
	12 " " " W	3
	6 p.m. " " " S	-6
	A lovely day, wind moderate; mean temperature	-3 0
6	7 a.m. cloudy, wind S	Zero
	12 " " " SE	16
	7 p.m. snowing " SE	13
	Wind variable, but moderate; mean temperature	8 0
7	7 a.m. snow & drift, " S	26
	12 " " " " "	15
	7 p.m. snowing " " W	10
	Very rough a.m., good breeze p.m.; mean temperature	18 0
8	7 a.m. fine, wind NW	-8
	12 " " " NW	-4
	6 p.m. " " " SW	-10
	A beautiful day, wind moderate; mean temperature	-7 0
9	7 a.m. fine, wind SW	-2
	12 cloudy, " SW	16
	6 p.m. snowing " SSW	22
	Moderate a.m., good breeze p.m.; mean temperature	10 0
10	7 a.m. raining, wind SSW	38
	12 snowing, " SW	33
	6 p.m. cloudy, " W	24
	A good breeze all day; mean temperature	31 0
11	7 a.m. fine, wind N	-9
	12 " " " N	-3
	6 p.m. " " " N	-6
	A beautiful day and almost calm; mean temperature	-6 0
	Ditto ditto for the week	7 2
12	7 a.m. fine, wind S	-6
	12 snowing, " W	6
	6 p.m. " " " SW	Zero
	Wind moderate a.m., good breeze p.m.; mean temperature	Zero

1867.

1868.

Feb.		DEG.
13	7 a.m. fine, wind N	2
12	" " " " N	20
	6 p.m. light snow " E	22
	Wind moderate all day; mean temperature ..	12 0
14	7 a.m. snowing, wind S	32
12	" " " " S	44
	6 p.m. " " " " NE	32
	Calm a.m.: good breeze p.m.; mean temperature ..	38 0
15	7 a.m. fine, wind N	10
12	" " " " N	12
	6 p.m. " " " " N	10
	Wind moderate throughout the day; mean temperature ..	11 0
16	7 a.m. fine, wind NW	5
12	" " " " NW	15
	6 p.m. " " " " W	14
	A beautiful day, wind moderate; mean temperature ..	10 0
17	7 a.m. fine, wind W	10
12	" " " " SW	23
	6 p.m. " " " " SW	28
	A beautiful day, wind moderate; mean temperature ..	19 0
18	7 a.m. snowing, wind S	23
12	" " " " S	32
	6 p.m. " " " " NE	20
	Wind moderate all day; mean temperature ..	26 0
	Ditto ditto for the week	18 5
19	7 a.m. fine, wind N	4
12	" " " " N	8
	6 p.m. " " " " NW	2
	A beautiful day, wind moderate; mean temperature ..	5 0
20	7 a.m. snowing, wind N	-2
12	" " " " N	2
	6 p.m. " " " " NW	-4
	Wind moderate all day; mean temperature ..	-1 0
21	7 a.m. fine wind NW	-12
12	" " " " NE	-6
	6 p.m. " " " " NE	-5
	Wind moderate, but very cold; mean temperature ..	-9 0
22	7 a.m. fine wind NE	-20
12	" " " " NE	2
	6 p.m. " " " " NE	-2
	A beautiful day, wind moderate; mean temperature ..	-9 0
23	7 a.m. fine, wind SE	8
12	" " " " SE	25
	6 p.m. " " " " SE	22
	Moderate a.m.: good breeze p.m.; mean temperature ..	10 5
24	7 a.m. fine, wind S	22
12	" " " " S	38
	6 p.m. " " " " SW	28
	A fine day, wind moderate; mean temperature ..	30 0

Feb.		DEG.
13	7 a.m. fine, wind NW	-9
12	" " " " NW	Zero
	6 p.m. " " " " S	2
	A lovely day and almost calm; mean temperature ..	-4 5
14	7 a.m. snowing, wind S	26
12	" " " " W	30
	6 p.m. " " " " NE	Zero
	A very rough snowy day mean; temperature ..	15 0
15	7 a.m. fine, wind S	-20
12	" cloudy, " SW	3
	6 p.m. snowing, " SW	5
	Almost calm till 9 a.m., good breeze after; mean temperature ..	-7 5
16	7 a.m. fine, wind NW	2
12	" " " " NW	14
	6 p.m. " " " " S	-2
	A lovely day and almost; calm mean temperature ..	6 0
17	7 a.m. fine, wind S	-21
12	" " " " N	4
	6 p.m. " " " " E	-8
	A lovely day and almost calm; mean temperature ..	-8 5
18	7 a.m. snowing, wind S	6
12	" " " " NE	23
	6 p.m. " " " " NE	18
	A snowy day, wind moderate; mean temperature ..	14 0
	Ditto ditto for the week	20 0
19	7 a.m. cloudy, wind NE	2
12	" snowing " NE	15
	6 p.m. " " " " NW	8
	Wind moderate all day; mean temperature ..	8 5
20	7 a.m. drifting snow, wind W	5
12	" " " " NW	9
	6 p.m. fine, " " W	2
	A good breeze a.m., moderate p.m.; mean temperature ..	5 5
21	7 a.m. light snow, wind SW	14
12	" " " " SW	35
	6 p.m. snowing " " NW	10
	A good breeze a.m., moderate p.m.; mean temperature ..	22 5
22	7 a.m. fine, wind SW	-13
12	" " " " W	2
	6 p.m. " " " " W	-8
	A beautiful day, wind moderate; mean temperature ..	-5 5
23	7 a.m. dull, cloudy, wind NE	-4
12	" snowing, " NE	2
	6 p.m. " " " " NE	5
	A very rough snowy day; mean temperature ..	-0 5
24	7 a.m. drifting snow, wind N	-10
12	" fine, " S	-5
	6 p.m. " " " " S	-13
	A good breeze a.m., moderate p.m.; mean temperature ..	-0 0

1867.

Feb.			DEG.
25	7 a.m. snowing,	wind NE	26
12	" "	" NE	32
	6 p.m. drifting snow	" N	22
	Wind moderate a.m.: boisterous		
	p.m.; mean temperature ..		27 0
	Ditto ditto for the week		8 5
26	7 a.m. snowing,	wind NW	10
12	" "	" NW	14
	6 p.m. " "	" NW	16
	A moderate breeze all day; mean		
	temperature ..		12 0
27	7 a.m. snowing,	wind NW	10
12	" "	" NW	13
	6 p.m. " "	" N	13
	Wind moderate all day; mean		
	temperature ..		11 5
28	7 a.m. fine,	wind NNE	4
12	" "	" NNE	3
	6 p.m. " "	" W	2
	A fine day, wind moderate;		
	mean temperature ..		3 0

Mean temperature for February, 1867 .. .. 18 6

March

1	7 a.m. fine,	wind W	-18
12	" "	" NW	-4
	6 p.m. " "	" N	-2
	A moderate breeze all day; mean		
	temperature ..		-10 0
2	7 a.m. fine,	wind SW	4
12	drifting snow, "	SW	14
	6 p.m. " "	" S	28
	Moderate a.m.: very boisterous		
	p.m.; mean temperature ..		16 0
3	7 a.m. fine,	wind NW	12
12	drifting snow, "	NW	2
	6 p.m. " "	" NW	2
	Wind boisterous a.m.: good		
	breeze p.m.; mean temperature		7 0
	Ditto ditto for six days		6 5
4	7 a.m. fine,	wind N	-18
12	" "	" N	10
	6 p.m. " "	" N	6
	A fine day, wind moderate;		
	mean temperature ..		-4 0
5	7 a.m. light snow,	wind S	10
12	fine, "	NE	25
	6 p.m. " "	" S	14
	Wind moderate all day; mean		
	temperature ..		17 5
6	7 a.m. light snow,	wind NW	7
12	fine, "	NW	17
	6 p.m. " "	" W	14
	Wind moderate all day; mean		
	temperature ..		12 0

1868.

Feb.			DEG.
25	7 a.m. fine,	wind S	-21
12	" "	" SW	5
	6 p.m. " "	" SW	-3
	A lovely day, wind moderate;		
	mean temperature ..		-8 0
	Ditto ditto for the week		1 9
26	7 a.m. fine,	wind SW	-3
12	" "	" SW	14
	6 p.m. dull, cloudy, "	SW	10
	Blowing a good breeze all day;		
	mean temperature ..		5 5
27	7 a.m. fine,	wind NW	9
12	" "	" NW	16
	6 p.m. " "	" SW	6
	A beautiful day, wind moderate;		
	mean temperature ..		10 5
28	7 a.m. fine,	wind E	-4
12	snowing, "	SE	20
	6 p.m. " "	" S	25
	Moderate a.m., very rough p.m.;		
	mean temperature ..		10 5
29	7 a.m. fine,	wind W	18
12	light snow, "	SW	30
	9 p.m. snowing, "	NE	18
	Wind moderate all day; mean		
	temperature ..		24 0
	Ditto ditto for February, 1868		5 0

March

1	7 a.m. snowing,	wind W	15
12	" "	" WSW	23
	6 p.m. " "	" W	8
	A very rough snowy day; mean		
	temperature ..		18 0
2	7 a.m. drifting snow, w.	W	2
12	" "	" WSW	5
	6 p.m. " "	" WSW	2
	A very rough and cold day;		
	mean temperature ..		3 5
3	7 a.m. light snow,	wind N	6
12	fine, "	NE	16
	6 p.m. " "	" ENE	10
	Wind moderate all day; mean		
	temperature ..		11 0
	Ditto ditto for the week		12 0
4	7 a.m. fine,	wind SE	2
12	dull, cloudy, "	NE	21
	7 p.m. fine, "	SE	13
	Almost calm throughout the		
	day; mean temperature ..		11 5
5	7 a.m. fine,	wind E	14
12	" "	" NE	20
	6 p.m. " "	" E	14
	A good breeze a.m.: moderate		
	p.m.; mean temperature ..		17 0
6	7 a.m. fine,	wind S	2
12	" "	" W	24
	6 p.m. " "	" S	16
	A lovely day, wind moderate;		
	mean temperature ..		13 0

METEOROLOGICAL OBSERVATIONS.

DEG.  
-21  
W 5  
W -3  
te;  
-8 0  
ek 1 9  
W -3  
W 14  
W 10  
y;  
5 5  
W 9  
W 16  
W 5  
te;  
10 5  
E -4  
SE 20  
S 25  
i;  
.. 10 5  
W 18  
W 30  
E 18  
an  
.. 24 0  
33 5 0  
V 15  
V 28  
V 8  
n  
18 0  
V 2  
V 5  
V 2  
;  
3 5  
N 6  
E 16  
E 10  
n  
11 0  
k 12 0  
2  
21  
13  
11 5  
14  
20  
14  
17 0  
2  
24  
16  
13 0

1867.		DEG.
March		
7	7 a.m. fine, wind NW	-10
12	" " " NW	8
6 p.m.	" " " NW	10
A beautiful day, wind moderate;		
mean temperature .. .. Zero		
8	7 a.m. fine, wind SW	10
12	dull, cloudy, " SW	22
6 p.m.	light snow, " SW	22
Wind moderate all day; mean		
temperature .. .. 16 0		
9	7 a.m. snowing, wind NE	14
12	" " " NE	22
6 p.m.	fine " NE	24
Wind moderate all day; mean		
temperature .. .. 19 0		
10	7 a.m. snowing, wind NE	12
12	fine, " NE	14
6 p.m.	" " " NE	20
Wind moderate all day; mean		
temperature .. .. 16 0		
Ditto ditto for the week 10 9		
11	7 a.m. fine, wind E	10
12	" " " W	28
6 p.m.	" " " NW	24
A beautiful day, wind moderate;		
mean temperature .. .. 19 0		
12	7 a.m. fine, wind NW	26
12	" " " NW	38
6 p.m.	" " " NW	28
A beautiful day, wind moderate;		
mean temperature .. .. 32 0		
13	7 a.m. light snow, wind SW	26
12	" " " SW	44
6 p.m.	" " " SW	32
Wind moderate all day; mean		
temperature .. .. 35 0		
14	7 a.m. fine, wind SW	24
12	" " " SW	44
6 p.m.	snowing, " SW	34
Wind moderate all day; mean		
temperature .. .. 34 0		
15	7 a.m. fine, wind NW	12
12	drifting snow, " NW	28
6 p.m.	" " " NW	16
A good breeze all day; mean		
temperature .. .. 19 0		
16	7 a.m. fine, wind NW	4
12	drifting snow, " NW	12
6 p.m.	" " " NW	17
Moderate a.m.: good breeze		
p.m.; mean temperature .. 10 5		
17	7 a.m. light snow, wind NW	12
12	fine, " NE	22
6 p.m.	" " " NE	16
Wind moderate all day; mean		
temperature .. .. 17 0		
Ditto ditto for the week 23 7		
18	7 a.m. fine, wind SE	14
12	" " " SE	36
6 p.m.	snowing " SE	22
Wind moderate all day; mean		
temperature .. .. 25 0		

1868.		DEG.
March		
7	7 a.m. light snow, wind SSW	30
12	drifting snow, " SW	81
6 p.m.	" " " SW	30
Blowing a gale of wind all day;		
mean temperature .. .. 30 5		
8	7 a.m. dull, cloudy, wind S	20
12	snowing, " SE	35
6 p.m.	raining, " SW	44
Almost calm a.m.: blowing a		
gale p.m.; mean temperature 32 0		
9	7 a.m. fine, wind W	31
12	" " " N	30
6 p.m.	" " " NW	26
Wind moderate all day; mean		
temperature .. .. 28 5		
10	7 a.m. fine, wind S	15
12	" " " SW	36
6 p.m.	" " " SW	31
Moderate a.m., good breeze p.m.;		
mean temperature .. .. 25 5		
Ditto ditto for the week 22 5		
11	7 a.m. snowing, wind NE	13
12	drifting snow, " N	7
6 p.m.	" " " NW	4
Blowing a good breeze all day;		
mean temperature .. .. 8 5		
12	7 a.m. dull, cloudy, wind NW	4
12	drifting snow, " W	23
6 p.m.	" " " WSW	13
Wind moderate a.m.: good breeze		
p.m.; mean temperature .. 13 5		
13	7 a.m. light snow, wind SW	28
12	snowing " SW	36
6 p.m.	dull, cloudy, " SW	33
Blowing hard a.m., moderate		
p.m.; mean moderate .. 32 0		
14	7 a.m. foggy, wind SW	32
12	" " " W	42
6 p.m.	" " " NE	30
Wind moderate, but very vari-		
able; mean temperature .. 36 0		
15	7 a.m. fine, wind NE	8
12	" " " NE	26
6 p.m.	" " " NE	20
A lovely day, wind moderate;		
mean temperature .. .. 17 0		
16	7 a.m. dull, cloudy, wind SW	28
12	raining, " SW	40
6 p.m.	snow squalls " WSW	33
A good breeze with squalls of rain		
and snow; mean temperature 34 0		
17	7 a.m. light snow, wind S	32
12	fine, " WSW	39
6 p.m.	stormy, " S	40
Moderate a.m.: good breeze p.m.;		
mean temperature .. .. 36 0		
Ditto ditto for the week 26 2		
18	7 a.m. dull, cloudy, wind SW	60
12	raining, " SW	60
6 p.m.	" " " SW	46
A very rough stormy day; mean		
temperature .. .. 48 0		

1867.

March		DEG.
19	7 a.m. snowing, wind SW	26
12	raining, " SW	38
6 p.m.	" " SW	34
	Wind moderate all day; mean temperature ..	32 0
20	7 a.m. fine, wind NE	28
12	" " " NE	34
6 p.m.	snowing " NE	30
	Wind moderate all day; mean temperature ..	31 0
21	7 a.m. fine, wind NE	28
12	" " " NE	38
6 p.m.	" " " E	26
	A beautiful day, wind moderate; mean temperature ..	32 0
22	7 a.m. fine, wind NE	6
12	" " " NE	24
6 a.m.	" " " NE	22
	A beautiful day, wind moderate; mean temperature ..	15 0
23	7 a.m. fine, wind NE	2
12	" " " NE	24
6 p.m.	" " " NE	20
	A beautiful day, wind moderate; mean temperature ..	13 0
24	7 a.m. fine, wind NE	20
12	" " " SW	38
6 p.m.	" " " S	32
	A beautiful day, wind moderate; mean temperature ..	29 0
	Ditto " for the week ..	25 1
25	7 a.m. fine, wind S	16
12	" " " S	38
6 p.m.	" " " NE	0
	A beautiful day, wind moderate; mean temperature ..	27 0
26	7 a.m. fine, wind SE	24
12	" " " NW	40
6 p.m.	" " " W	36
	A beautiful day, wind moderate; mean temperature ..	32 0
27	7 a.m. cloudy, wind S	40
12	" " " S	50
6 p.m.	" " " S	46
	Wind rough throughout the day; mean temperature ..	45 0
28	7 a.m. cloudy, wind S	46
12	" " " S	52
6 p.m.	raining " S	48
	Wind boisterous all day; mean temperature ..	49 0
29	7 a.m. sleet wind W	34
12	snowing, " W	36
6 p.m.	fine, " W	32
	Wind moderate all day; mean temperature ..	34 0
30	7 a.m. fine, wind SW	30
12	" " " SW	32
6 p.m.	" " " SW	30
	A fine day, wind moderate; mean temperature ..	31 0

1868.

March		DEG.
19	7 a.m. dull, cloudy, wind NW	32
12	snow-squalls " NE	26
6 p.m.	" Glitter " ENE	25
	Moderate a.m., good breeze p.m.; mean temperature ..	38 5
20	7 a.m. fine, wind S	16
12	" " " NE	30
6 p.m.	" " " NE	26
	A beautiful day, wind moderate; mean temperature ..	23 0
21	7 a.m. fine, wind S	20
12	" " " NE	34
6 p.m.	dull, " E	34
	A fine day, wind moderate; mean temperature ..	27 0
22	7 a.m. dull, cloudy, wind S	37
12	foggy, " W	42
6 p.m.	raining, " NE	35
	Wind moderate but variable; mean temperature ..	38 5
23	7 a.m. snowing, wind NW	29
12	" " " SW	32
6 p.m.	fine, " W	22
	Moderate a.m., good breeze p.m.; mean temperature ..	27 0
24	7 a.m. snowing wind S	22
12	" " " N	26
6 p.m.	" " " NE	22
	Almost calm a.m., good breeze p.m.; mean temperature ..	24 0
	Ditto ditto for the week ..	30 8
25	7 a.m. drifting snow, wind NE	15
12	" " " NE	16
6 p.m.	" " " NE	15
	A very rough snowy day; mean temperature ..	15 5
26	7 a.m. light snow, wind NE	6
12	fine, " NW	15
6 p.m.	" " " W	10
	A good breeze a.m., moderate p.m.; mean temperature ..	10 5
27	7 a.m. fine, wind W	6
12	" " " WSW	23
6 p.m.	" " " NE	18
	Snow at 10 a.m., wind moderate; mean temperature ..	17 0
28	7 a.m. fine, wind S	6
12	" " " NW	23
6 p.m.	snowing, " E	18
	Wind moderate, but very variable; mean temperature ..	14 5
29	7 a.m. light snow, wind E	12
12	fine, " NE	18
6 p.m.	" " " S	12
	A good breeze a.m., moderate p.m.; mean temperature ..	15 0
30	7 a.m. fine, wind SW	8
12	" " " SW	26
6 p.m.	" " " SW	18
	A good breeze with light snow p.m.; mean temperature ..	17 0

1867.

March		DEG.
31	7 a.m. fine, wind S	30
12	" " " NW	38
6 p.m.	" " " SW	32
Wind moderate all day; mean temperature .. .. 34 0		
Ditto ditto for the week .. 30 0		
Ditto ditto for March, 1867 22 0		

April		DEG.
1	7 a.m. fine, wind S	30
12	" " " W	42
6	" " " NW	34
A beautiful day, wind moderate; mean temperature .. 36 0		
2	7 a.m. fine, wind S	30
12	" " " NW	44
6 p.m.	" " " S	40
A beautiful day, wind moderate; mean temperature .. 37 0		
3	7 a.m. fine, wind SE	30
12	" " " SE	48
6 p.m.	" " " SE	44
A beautiful wind, wind moderate; mean temperature .. 39 0		
4	7 a.m. fine, wind S	24
12	" " " NE	42
6 p.m.	" " " SW	36
A beautiful day, wind moderate; mean temperature .. 33 0		
5	7 a.m. fine, wind S	26
12	" " " SW	40
6 p.m.	" " " SW	36
A fine day, wind moderate; mean temperature .. 33 0		
6	7 a.m. raining, wind SW	38
12	" " " S	40
6 p.m.	" " " SW	36
Wind moderate a.m., rough p.m.; mean temperature .. 38 0		
7	7 a.m. cloudy, wind W	26
12	fine, " W	32
6 p.m.	" " " SW	36
A good breeze all day; mean temperature .. 31 0		
Ditto ditto for the week .. 35 2		
8	7 a.m. light snow, wind SE	34
12	" " " SE	40
6 p.m. fine,	" " W	34
Wind moderate all day; mean temperature .. 37 0		
9	7 a.m. cloudy, wind S	34
12	snowing " S	34
6 p.m.	" " " NW	32
Wind moderate a.m., rough p.m.; mean temperature .. 33 0		
10	7 a.m. fine, wind N	26
12	" " " NW	34
6 p.m.	" " " NW	34
Moderate a.m., good breeze p.m.; mean temperature .. 30 0		

1868.

March		DEG.
31	7 a.m. fine, wind SW	23
12	" " " SW	40
6 p.m. snowing,	" " SW	30
Blowing a gale of wind all day; mean temperature .. 31 5		
Ditto ditto for the week .. 15 8		
Ditto ditto for March, 1868 22 4		

April		DEG.
1	7 a.m. fine wind S	19
12	" " " NW	48
6 p.m.	" " " S	32
A beautiful day, wind moderate; mean temperature .. 31 0		
2	7 a.m. cloudy, wind SW	33
12	fine, " W	36
6 p.m.	" " " W	27
A good breeze a.m., moderate p.m.; mean temperature .. 31 5		
3	7 a.m. snowing, wind S	28
12	cloudy, " S	41
6 p.m. snowing,	NNW	20
Very rough morning and evening; mean temperature .. 30 5		
4	7 a.m. fine, wind SW	16
12	" " " W	32
6 p.m.	" " " S	22
Blowing a good breeze till evening; mean temperature .. 24 0		
5	7 a.m. fine, wind S	14
12	" " " SSW	44
6 p.m.	" " " SSE	32
Moderate a.m., good breeze p.m.; mean temperature .. 29 0		
6	7 a.m. drifting snow, wind W	18
12	" " " " W	22
6 p.m.	" " " " W	12
The roughest day throughout the winter; mean temperature .. 17 0		
7	7 a.m. drifting snow, wind SW	18
12	snowing, " W	28
6 p.m.	" " " WSW	20
Blowing hard all day; mean temperature .. 23 0		
Ditto ditto for the week .. 26 5		
8	7 a.m. snowing, wind S	20
12	" Glitter " " S	31
6 p.m. fine,	" " SW	36
Blowing a gale of wind all day; mean temperature .. 28 0		
9	7 a.m. snowing, wind SW	24
12	fine, " W	24
6 p.m. drifting,	" " SW	22
Blowing a gale of wind all day; mean temperature .. 23 0		
10	7 a.m. fine, wind NW	23
12	" " " NW	33
6 p.m.	" " " SW	26
Blowing a good breeze till evening; mean temperature .. 28 0		



METEOROLOGICAL OBSERVATIONS.

1867.		DEG.
April		
11	7 a.m. snowing, wind S	34
12	" " " SE	44
	6 p.m. " " SE	34
	Wind moderate all day; mean temperature ..	39 0
12	7 a.m. snowing, wind NW	22
12	drifting snow, " NW	23
	6 p.m. " " NW	22
	Wind rough throughout the day; mean temperature ..	22 5
13	7 a.m. fine, wind SW	22
13	" " " SW	28
	6 p.m. " " SW	22
	Wind moderate all day; mean temperature ..	25 0
14	7 a.m. snowing, wind SE	32
13	" " " SE	36
	6 p.m. " " SE	42
	Wind moderate throughout the day; mean temperature ..	37 0
	Ditto ditto for the week ..	31 9
15	7 a.m. fine, wind SW	20
13	" " " SW	40
	6 p.m. " " SW	40
	Moderate a.m., very rough p.m.; mean temperature ..	30 0
16	7 a.m. raining, wind SW	36
12	light snow " SW	36
	6 p.m. " " SW	34
	Wind moderate a.m., rough p.m.; mean temperature ..	35 0
17	7 a.m. fine, wind SE	28
12	" " " SE	40
	6 p.m. " " SE	32
	A beautiful day, wind moderate; mean temperature ..	34 0
18	7 a.m. fine, wind SE	36
12	" " " SE	44
	6 p.m. cloudy, " SE	32
	Wind moderate a.m., rough p.m.; mean temperature ..	38 0
19	7 a.m. cloudy, wind SE	36
12	" " " NE	48
	6 p.m. " " SE	40
	Wind rough throughout the day; mean temperature ..	42 0
20	7 a.m. fine, wind SE	30
12	" " " SE	46
	6 p.m. " " SE	40
	A fine day, wind moderate; mean temperature ..	38 0
21	7 a.m. fine, wind NE	30
12	" " " NE	46
	6 p.m. " " NE	40
	A beautiful day, wind moderate; mean temperature ..	38 0
	Ditto ditto for the week ..	36 4
22	7 a.m. raining, wind SW	31
12	cloudy, " SW	46
	6 p.m. " " SW	33
	Wind rough a.m., moderate p.m.; mean temperature ..	40 0

1868.		DEG.
April		
11	7 a.m. fine, wind S	18
12	" " " N	32
	6 p.m. light snow, " SSE	32
	Wind moderate all day; mean temperature ..	26 0
12	7 a.m. snowing, wind NNE	23
12	fine, " NW	34
	6 p.m. " " S	23
	Moderate a.m., almost calm p.m.; mean temperature ..	28 5
13	7 a.m. light snow, wind S	22
12	fine, " NE	30
	6 p.m. snowing, " NNE	27
	Wind moderate, but very variable; mean temperature ..	26 0
14	7 a.m. fine, wind NW	16
12	" " " NW	32
	6 p.m. " " W	22
	Blowing a good breeze all day; mean temperature ..	24 0
	Ditto ditto for the week ..	26 0
16	7 a.m. cloudy, wind SW	33
12	" " " SSW	44
	6 p.m. fine, " NE	22
	A good breeze a.m., moderate p.m.; mean temperature ..	33 0
16	7 a.m. dull, cloudy, wind E	20
12	" " " NE	26
	6 p.m. " " S	34
	Moderate a.m., good breeze p.m.; mean temperature ..	27 0
17	7 a.m. rain and fog, wind SW	41
12	" " " SW	41
	6 p.m. " " SSW	35
	A good breeze a.m., moderate p.m.; mean temperature ..	38 0
18	7 a.m. foggy, wind SW	38
12	fine, " SW	45
	6 p.m. foggy, " SW	34
	Blowing hard all day with hail p.m.; mean temperature ..	39 5
19	7 a.m. snowing, wind NW	27
12	fine, " NW	32
	6 p.m. cloudy, " NW	27
	A good breeze all day; mean temperature ..	29 5
20	7 a.m. snowing, wind NE	23
12	fine, " NW	33
	6 p.m. " " SW	23
	Moderate a.m., good breeze p.m.; mean temperature ..	28 0
21	7 a.m. fine, wind SSW	30
12	" " " SW	40
	6 p.m. " " Calm	34
	Wind moderate, but very variable; mean temperature ..	35 0
	Ditto ditto for the week ..	32 8
22	7 a.m. fine, wind S	30
12	" " " SW	44
	6 p.m. " " SW	38
	Almost calm a.m., moderate p.m.; mean temperature ..	37 0

1867.

April	DEC.
23 7 a.m. raining, wind E	40
12 " " " S	32
6 p.m. " " SE	42
Wind moderate throughout the day; mean temperature ..	46 0
24 7 a.m. Ground covered with snow wind NW	35
12 " fine, " NW	32
6 p.m. " " NW	32
Wind moderate throughout the day; mean temperature ..	33 5
25 7 a.m. cloudy, wind SE	32
12 " " " SE	44
6 p.m. raining, " SE	40
Moderate a.m., good breeze p.m.; mean temperature ..	38 0
26 7 a.m. raining, wind SE	34
12 cloudy, " W	42
6 p.m. snowing, " W	30
Wind moderate throughout the day; mean temperature ..	36 0
27 7 a.m. fine, wind N	38
12 " " " N	46
6 p.m. " " " N	40
A beautiful day, wind moderate; mean temperature ..	41 0
28 7 a.m. fine, wind SE	40
12 cloudy, " S	52
6 p.m. raining, " S	40
Wind rough a.m., moderate p.m.; mean temperature ..	46 0
Ditto ditto for the week ..	40 0
29 7 a.m. Ground covered with snow wind W	30
12 light snow, " W	28
6 p.m. cloudy, " W	28
Wind rough a.m., moderate p.m.; mean temperature ..	29 0
30 7 a.m. fine, wind SE	34
12 " " " SW	44
6 p.m. light snow " SW	40
Wind moderate throughout the day, mean temperature ..	39 0
Ditto ditto for April, 1867	35 8
May	
1 7 a.m. raining, wind SW	40
12 " " " SW	54
6 p.m. " " SW	52
Wind moderate throughout the day; mean temperature ..	47 0
2 7 a.m. fine, wind SW	61
12 " " " SW	68
6 p.m. " " SW	60
Wind moderate a.m., rough p.m.; mean temperature ..	61 0
3 7 a.m. fine, wind E	38
12 " " " NW	44
6 p.m. " " NW	38
A beautiful day, wind moderate; mean temperature ..	41 0

1868.

April	DEC.
23 7 a.m. cloudy, wind WNW	28
12 snow-squalls " WNW	28
6 p.m. fine, " WNW	22
A good breeze with squalls of snow; mean temperature ..	25 0
24 7 a.m. snow-squalls, wind NE	19
12 " " " NW	27
6 p.m. " " " W	19
Blowing a good breeze all day; mean temperature ..	23 0
25 7 a.m. snow-squalls wind W	14
12 fine, " NW	23
6 p.m. snow-squalls " W	20
Blowing hard all day; mean temperature ..	18 5
26 7 a.m. fine, wind W	13
12 snow-squalls " WNW	26
6 p.m. snowing, " W	18
A rough, cold day, with squalls of snow; mean temperature ..	19 5
27 7 a.m. snowing, wind WSW	16
12 " " " WSW	26
6 p.m. fine, " N	23
Blowing hard a.m., moderate p.m.; mean temperature ..	21 0
28 7 a.m. 2in. light snow, wind N	14
12 foggy, " SW	39
6 p.m. fine, " W	23
Snowing at times; wind moderate; mean temperature ..	26 5
Ditto ditto for the week ..	24 3
29 7 a.m. fine, wind NE	26
12 " " " W	39
6 p.m. " " " NW	25
A beautiful day, wind moderate; mean temperature ..	32 5
30 7 a.m. dull, cloudy, wind W	24
12 snow-squalls " S	57
6 p.m. raining " S	35
Wind moderate a.m., good breeze p.m.; mean temperature ..	40 5
Ditto ditto for April, 1868	28 0
May	
1 7 a.m. snowing, wind SSW	32
12 cloudy, " W	27
6 p.m. fine, " W	27
Blowing a gale a.m., good breeze p.m.; mean temperature ..	29 5
2 7 a.m. fine, wind W	22
12 light snow, " WNW	33
6 p.m. dull, " W	27
A good breeze all day; mean temperature ..	27 5
3 7 a.m. dull, wind W	24
12 light snow, " WNW	29
6 p.m. fine, " W	23
A good breeze a.m., moderate p.m.; mean temperature ..	26 0

METEOROLOGICAL OBSERVATIONS.

19

May	1867.	DEG.
4	7 a.m. fine, wind NW	32
	12 " " " NW	39
	6 p.m. snowing, " NW	32
	Wind moderate throughout the day; mean temperature ..	35 5
5	7 a.m. light snow, wind NW	30
	12 fine, " NW	34
	6 p.m. " " W	40
	Wind moderate a.m., rough p.m.; mean temperature ..	35 0
	Ditto ditto for the week ..	41 5
6	7 a.m. fine, wind NW	36
	12 " " " NW	44
	6 p.m. " " NW	42
	A fine day, wind moderate; mean temperature ..	40 0
7	7 a.m. raining, wind NW	38
	12 cloudy, " NW	44
	6 a.m. raining, " SE	42
	Wind moderate all day; mean temperature ..	41 0
8	7 a.m. fine, wind NW	44
	12 " " " NW	46
	6 p.m. " " W	44
	A fine day, wind moderate; mean temperature ..	45 0
9	7 a.m. raining, wind S	54
	12 " " " S	60
	6 p.m. " " S	62
	Wind moderate a.m., rough p.m.; mean temperature ..	57 0
10	7 a.m. fine, wind S	60
	12 raining, " S	52
	6 p.m. cloud " S	54
	Wind rough throughout the day; mean temperature ..	56 0
11	7 a.m. fine, wind SSE	58
	12 " " " SSE	66
	6 p.m. raining, " SE	58
	A good breeze a.m., moderate p.m.; mean temperature ..	62 0
12	7 a.m. raining, wind SW	54
	12 cloudy, " SW	60
	6 p.m. " " SW	56
	Wind moderate all day; mean temperature ..	57 0
	Ditto " for the week ..	51 1
13	7 a.m. cloudy, wind SW	54
	12 " " " SW	58
	6 p.m. " " W	48
	Wind moderate all day; mean temperature ..	53 0
14	7 a.m. cloudy, wind WSW	46
	12 fine, " W	56
	6 p.m. " " N	44
	Wind moderate all day; mean temperature ..	50 0
15	7 a.m. fine, wind NE	36
	12 " " " SE	48
	6 p.m. " " SE	44
	Wind moderate a.m., rough p.m.; mean temperature ..	42 0

May	1868.	DEG.
4	7 a.m. fine, wind W	22
	12 " " " WNW	36
	6 p.m. dull, cloudy, " WSW	25
	Moderate a.m., blowing hard p.m.; mean temperature ..	29 0
5	7 a.m. snowing, wind SW	31
	12 dull, cloudy, " NE	41
	6 p.m. snow-squalls " NE	30
	A good breeze a.m., moderate p.m.; mean temperature ..	35 5
	Ditto ditto for the week ..	31 5
6	7 a.m. fine, wind NW	27
	12 " " " N	42
	6 p.m. " " NW	37
	A lovely day and almost calm; mean temperature ..	34 5
7	7 a.m. fine, wind S	34
	12 cloudy, " S	50
	6 p.m. raining, " S	40
	Moderate a.m., good breeze p.m.; mean temperature ..	42 0
8	7 a.m. raining, wind SE	38
	12 fine, " S	50
	6 p.m. raining, " S	40
	Blowing a good breeze all day; mean temperature ..	44 0
9	7 a.m. dull, cloudy, wind SE	36
	12 snowing, " NW	40
	6 p.m. " " NE	33
	A good breeze a.m., blowing hard p.m.; mean temperature ..	36 5
10	7 a.m. dull, wind NE	34
	12 fine, " NW	43
	6 p.m. " " W	34
	A fine moderate, day; mean temperature ..	39 5
11	7 a.m. fine, wind W	30
	12 " " " W	38
	6 p.m. " " W	32
	Blowing a good breeze all day; mean temperature ..	34 0
12	7 a.m. fine, wind W	29
	12 " " " W	39
	6 p.m. " " W	34
	Blowing a good breeze all day; mean temperature ..	34 0
	Ditto ditto for the week ..	37 6
13	7 a.m. fine, wind SW	36
	12 " " " W	43
	6 p.m. " " SW	40
	Blowing a good breeze all day; mean temperature ..	39 5
14	7 a.m. fine, wind SW	42
	12 " " " W	47
	6 p.m. raining, " SW	40
	Blowing hard all day; mean temperature ..	43 5
15	7 a.m. raining, wind SW	38
	12 foggy, " W	47
	6 p.m. thick fog, " N	40
	Wind moderate, but very variable; mean temperature ..	42 5

METEOROLOGICAL OBSERVATIONS.

1867.

1868.

		Deg.
7 a.m.	cloudy, wind ESE	44
12	" " " ESE	55
6 p.m.	" " " ESE	48
Wind rough throughout the day; mean temperature .. 50 0		
7 a.m.	cloudy, wind SE	46
12	" " " SE	68
6 p.m.	" " " E	46
Wind rough throughout the day; mean temperature .. 52 0		
7 a.m.	fine, wind NE	36
13	" " " NE	42
6 p.m.	" " " E	42
Wind rough throughout the day; mean temperature .. 39 0		
7 a.m.	raining, wind E	42
12	cloudy, " E	45
6 p.m.	" " " E	44
Blowing a gale of wind all day; mean temperature .. 43 5		
Ditto ditto for the week 47 0		
7 a.m.	cloudy, wind NE	34
12	snowing, " NE	36
6 p.m.	" " " NE	34
Wind boisterous with squalls of snow; mean temperature 35 0		
7 a.m.	snowing, wind N	34
12	" " " NW	38
6 p.m.	fine, " NW	36
Wind rough a.m., moderate p.m.; mean temperature .. 36 0		
7 a.m.	fine, wind N	40
12	" " " SW	68
6 p.m.	" " " S	60
A beautiful day, wind moderate; mean temperature .. 54 0		
7 a.m.	fine, wind NE	44
12	" " " NE	50
6 p.m.	cloudy, " S	52
Wind moderate all day; mean temperature .. 47 0		
7 a.m.	raining, wind SSW	50
12	fine, " SSW	56
6 p.m.	" " " SSE	50
Wind moderate all day; mean temperature .. 53 0		
7 a.m.	raining wind W	44
12	fine, " W	56
6 p.m.	" " " W	52
Wind moderate all day; mean temperature .. 50 0		
7 a.m.	cloudy, wind W	48
12	fine, " SSW	50
6 p.m.	" " " W	50
A fine day, wind moderate; mean temperature .. 49 0		
Ditto ditto for the week 46 2		

May		Deg.
16 7 a.m.	thick fog, wind NE	33
12	fine, " W	46
6 p.m.	" " " W	35
A beautiful day, wind moderate; mean temperature .. 39 5		
17 7 a.m.	fine, wind NE	40
12	raining, " NW	48
6 p.m.	rain and fog " EW	40
Wind moderate all day; mean temperature .. 44 0		
Ditto for the 5 days .. 41 8		
Ditto for the 17 days .. 36 4		

From the above date (May 17th) until June 10th, the weather was very cold with sharp frosts and heavy falls of snow. The drift ice was fast bound on the shore at Cow Head until May 31st; one day later than it was ever remembered to have remained by the oldest inhabitants in the neighbourhood.

1867.		DEG.
May		
27	7 a.m. raining, wind S	52
	12 " " " S	52
	6 p.m. " " S	48
	Wind moderate all day; mean temperature ..	50 0
28	7 a.m. cloudy, wind W	50
	12 " " SW	52
	6 p.m. " " N	48
	Wind moderate all day; mean temperature ..	50 0
29	7 a.m. cloudy, wind N	40
	12 fine, " N	44
	6 p.m. " " N	44
	Wind moderate all day; mean temperature ..	42 0
30	7 a.m. fine, wind N	42
	12 " " N	44
	6 p.m. " " SW	44
	A fine day, wind moderate; mean temperature ..	43 0
31	7 a.m. fine, wind SW	42
	12 " " N	60
	6 p.m. " " N	59
	A fine day, wind moderate; mean temperature ..	51 0
	Ditto ditto for May, 1867 ..	47 4

1867.

June		DEG.
1	7 a.m. fine, wind NW	52
	12 " " W	70
	6 p.m. " " SW	60
	A lovely day, wind moderate; mean temperature ..	61 0
2	7 a.m. fine, wind NW	50
	12 " " NW	54
	6 p.m. " " NW	52
	Wind moderate all day; mean temperature ..	52 0
	Ditto ditto for the week	49 8
3	7 a.m. fine, wind SW	56
	12 cloudy, " SW	58
	6 p.m. raining, " SW	54
	Wind rough throughout the day; mean temperature ..	56 0
4	7 a.m. cloudy, wind WSW	60
	12 raining, " WSW	62
	6 p.m. " " WSW	60
	Wind rough throughout the day; mean temperature ..	61 0
5	7 a.m. cloudy, wind SW	50
	12 fine, " W	52
	6 p.m. " " W	48
	Wind rough throughout the day; mean temperature ..	50 0
6	7 a.m. fine, wind NW	44
	12 " " NW	50
	6 p.m. " " NW	48
	Wind rough throughout the day; mean temperature ..	47 0

June		DEG.
7	7 a.m. fine, wind NW	44
	12 " " SW	48
	6 p.m. " " N	44
	Wind moderate a.m., rough p.m.; mean temperature ..	46 0
8	7 a.m. fine, wind NE	44
	12 " " W	56
	6 p.m. " " W	50
	Wind moderate all day; mean temperature ..	50 0
9	7 a.m. cloudy, wind NE	48
	12 fine, " NE	50
	6 p.m. " " NE	46
	Blowing a good breeze all day; mean temperature ..	48 0
	Ditto ditto for the week	51 1
10	7 a.m. fine, wind E	40
	12 " " NE	46
	6 p.m. " " WNW	48
	A fine day: wind moderate; mean temperature ..	44 0
11	7 a.m. fine, wind SW	46
	12 " " SW	58
	6 p.m. " " SW	50
	A fine day, wind moderat; mean temperature ..	52 0
12	7 a.m. fine, wind WSW	60
	12 " " W	58
	6 p.m. " " W	56
	Wind rough throughout the day; mean temperature ..	55 0

1867.

June		DEG.	June		DEG.
13	7 a.m. fine,	wind SW 56	25	7 a.m. fine,	wind SW 52
12	" "	" SW 58	12	" "	" SW 56
6 p.m.	cloudy,	" SW 52	6 p.m.	" "	" SE 54
	Wind rough a.m.: moderate			A fine day, wind moderate;	
	p.m.; mean temperature ..	55 0		mean temperature ..	54 0
14	7 a.m. raining,	wind NE 42	26	7 a.m. fine,	wind NW 52
12	" "	" NE 44	12	" "	" NW 52
6 p.m.	" "	" NE 44	6 p.m.	" "	" NE 50
	Wind rough a.m., moderate			A lovely day, wind moderate;	
	p.m.; mean temperature ..	43 0		mean temperature ..	51 0
16	7 a.m. fine,	wind SW 48	27	7 a.m. fine,	wind W 47
12	" "	" SW 52	12	" "	" SW 60
6 p.m.	raining,	" SW 50	6 p.m.	" "	" SW 50
	Wind rough a.m., moderate			Moderate a.m., good breeze p.m.;	
	p.m.; mean temperature ..	50 0		mean temperature ..	53 5
16	7 a.m. raining,	wind SW 54	28	7 a.m. fine,	wind SW 60
12	" "	" SW 56	12	" "	" SW 76
6 p.m.	" "	" SW 48	6 p.m.	raining,	" S 64
	Wind moderate all day; mean-			A good breeze throughout the	
	temperature ..	52 0		day; mean temperature ..	68 0
	Ditto ditto for the week	50 5	29	7 a.m. foggy,	wind SW 54
17	7 a.m. fine,	wind NE 45	12	fine,	" SW 66
12	" "	" NE 50	6 p.m.	" "	" W 58
6 p.m.	" "	" NW 48		A good breeze throughout the	
	Wind rough a.m., moderate			day; mean temperature ..	60 0
	p.m.; mean temperature ..	47 5	30	7 a.m. fine,	wind W 52
18	7 a.m. fine,	wind WSW 50	12	" "	" W 70
12	" "	" WSW 62	6 p.m.	raining,	" W 60
6 p.m.	" "	" WSW 62		Wind moderate all day; mean	
	A fine day, wind moderate;			temperature ..	61 0
	mean temperature ..	56 0		Ditto ditto for the week	57 0
19	7 a.m. raining,	wind SW 54	Ditto	ditto for June, 1867	53 2
12	" "	" WSW 54			
6 p.m.	cloudy,	" SW 50			
	Wind boisterous all day; mean				
	temperature ..	52 0			
20	7 a.m. fine,	wind NW 50			
12	" "	" NW 60			
6 p.m.	" "	" NW 58			
	A fine day, wind moderate;				
	mean temperature ..	55 0			
21	7 a.m. fine,	wind SW 48			
12	" "	" SW 58			
6 p.m.	" "	" SW 56			
	A fine day wind moderate;				
	mean temperature ..	53 0			
22	7 a.m. raining,	wind SW 54			
12	fine,	" SW 60			
6 p.m.	" "	" SW 54			
	Wind moderate all day; mean				
	temperature ..	57 0			
23	7 a.m. fine,	wind SW 54			
12	raining,	" S 60			
6 p.m.	cloudy,	" W 50			
	Wind moderate all day; mean				
	temperature ..	55 0			
	Ditto ditto for the week	53 6			
24	7 a.m. cloudy,	wind SW 56			
12	fine,	" SW 54			
6 p.m.	" "	" S 50			
	Wind moderate all day; mean				
	temperature ..	52 0			

July.		
1	7 a.m. raining,	wind S 62
12	fine,	" SW 60
6 p.m.	foggy,	" SW 56
	Calm till 9 a.m., good breeze	
	p.m.; mean temperature ..	59 0
2	7 a.m. fine,	wind WSW 52
12	" "	" WSW 56
6 p.m.	" "	" WSW 48
	A good breeze all day snow;	
	mean temperature ..	52 0
3	7 a.m. raining,	wind WSW 50
12	fine,	" WSW 60
6 p.m.	raining,	" WSW 62
	A good breeze a.m., moderate	
	p.m.; mean temperature ..	55 0
4	7 a.m. fine,	wind NW 52
12	" "	" W 62
6 p.m.	" "	" SW 56
	A beautiful day, wind moderate;	
	mean temperature ..	57 0
5	7 a.m. fine,	Calm 50
12	" "	wind NNE 52
6 p.m.	" "	" NW 52
	A beautiful day, wind moderate;	
	mean temperature ..	54 0

1867.

July		DEG.
6	7 a.m. fine, wind N	50
12	" " " N	56
6 p.m.	" " " SW	58
A fine day, wind moderate; mean temperature .. ..		53 0
7	7 a.m. raining, wind S	58
12	" fine, " S	64
6 p.m.	" " " S	60
Wind moderate all day; mean temperature .. ..		61 0
Ditto ditto for the week		55 8
8	7 a.m. fine, wind SW	60
12	" " " WNW	70
6 p.m.	" " " W	58
Foggy at times during the day; mean temperature .. ..		64 0
9	7 a.m. fine, wind N	56
12	" " " NW	60
6 p.m.	" " " W.	58
A beautiful day, wind moderate; mean temperature .. ..		58 0
10	7 a.m. fine, wind SW	58
12	" " " W	64
6 p.m.	" " " NW	56
Almost calm throughout the day; mean temperature .. ..		60 0
11	7 a.m. fine, wind W	56
12	" " " N	66
6 p.m.	" " " W	60
Light shifting winds all day; mean temperature .. ..		61 0
12	7 a.m. fine, wind SW	62
12	" " " SW	70
6 p.m.	" foggy, " SW	62
Almost calm a.m.: stormy p.m.; mean temperature .. ..		66 0
13	7 a.m. fine, wind NW	56
12	" " " N	62
6 p.m.	" " " SW	58
Wind moderate all day; mean temperature .. ..		59 0
14	7 a.m. fine, wind SW	58
12	" " " SW	66
6 p.m.	" " " SW	58
A good breeze all day; mean temperature .. ..		62 0
Ditto ditto for the week		61 4
15	7 a.m. fine, wind SW	62
12	" " " SW	72
6 p.m.	" " " NE	62
Good breeze a.m., almost calm p.m.; mean temperature .. ..		67 0
16	7 a.m. fine, wind NE	58
12	" " " NE	58
6 p.m.	" " " SE	58
Almost calm till 8 a.m., good breeze after; mean temperature .. ..		58 0
17	7 a.m. fine, wind S	55
12	" " " SE	70
6 p.m.	" " " SE	56
Almost calm a.m.: good breeze p.m.; mean temperature .. ..		62 5

July		DEG.
18	7 a.m. fine, wind NE	54
12	" " " SW	64
6 p.m.	" " " SW	56
Wind moderate all day; mean temperature .. ..		59 0
19	7 a.m. cloudy, wind W	52
12	" " " SW	64
6 p.m.	" fine, " SW	56
Wind moderate all day; mean temperature .. ..		58 0
20	7 a.m. fine, wind SW	58
12	" " " NW	63
6 p.m.	" " " NE	56
Wind moderate all day; mean temperature .. ..		59 5
28	7 a.m. fine, wind N	58
12	" " " NW	70
6 p.m.	" " " NNE	63
Almost calm all day; mean temperature .. ..		64 0
Ditto ditto for the week		61 1
22	7 a.m. fine, wind SSE	57
12	" cloudy, " SE	70
9 p.m.	" " " S	58
Nearly calm a.m., good breeze p.m.; mean temperature .. ..		63 5
23	7 a.m. fine, wind S	66
12	" " " N	64
6 p.m.	" " " W	66
Wind moderate all day; mean temperature .. ..		65 0
24	7 a.m. fine, wind W	66
12	" " " W	70
6 p.m.	" " " W	68
Good breeze throughout the day; mean temperature .. ..		68 0
25	7 a.m. fine, wind W	66
12	" " " W	70
6 p.m.	" " " W	68
Good breeze throughout the day; mean temperature .. ..		68 0
26	7 a.m. fine, wind SW	72
12	" " " SW	76
6 p.m.	" " " SSW	70
Wind moderate all day; mean temperature .. ..		73 0
27	7 a.m. fine, wind SW	70
12	" " " SW	74
6 p.m.	" " " SW	70
Wind moderate all day; mean temperature .. ..		72 0
28	7 a.m. fine, wind SW	66
12	" " " SW	68
6 p.m.	" " " SW	65
Wind boisterous all day; mean temperature .. ..		66 5
Ditto ditto for the week		59 4
29	7 a.m. raining, wind SW	62
12	" " " SW	66
6 p.m.	" fine, " SW	64
Wind boisterous all day; mean temperature .. ..		64 0

1867.

July		DEG.	August		DEG.	
30	7 a.m. fine,	wind SW 66	10	7 a.m. fine,	wind SW 70	
	12	" W 68		12	foggy,	" SW 72
	6 p.m. "	" NW 66		6 p.m. "	" SW 68	
	Wind moderate all day; mean			Wind moderate all day; mean		
	temperature ..	67 0		temperature ..	70 0	
31	7 a.m. fine,	wind SW 70	11	7 a.m. foggy,	wind SW 68	
	12	" W 76		12	" SW 76	
	6 p.m. "	" W 72		6 p.m. "	" SW 64	
	Wind moderate all day; mean			Moderate a.m.: good breeze		
	temperature ..	73 0		p.m.; mean temperature ..	70 0	
	Meantemperature for July, 1867	62 2		Ditto ditto for the week	66 0	
				12	7 a.m. raining, wind WSW	54
				12	foggy,	" WSW 58
				6 p.m. "	" W 54	
				Good breeze and stormy all day;		
				mean temperature ..	56 0	
				13	7 a.m. fine,	wind SW 66
				12	" "	" SW 74
				6 p.m. "	" SW 65	
				A good breeze all day; mean		
				temperature ..	69 5	
				14	7 a.m. fine,	wind SW 64
				12	" "	" SW 76
				6 p.m. raining,	" SSW 64	
				A good breeze till 5 p.m.;		
				mean temperature ..	70 0	
				17	7 a.m. raining,	wind W 61
				12	foggy,	" SW 68
				6 p.m. fine,	" SW 64	
				Wind moderate all day; mean		
				temperature ..	64 5	
				16	7 a.m. fine,	wind SW 62
				12	" "	" SW 68
				6 p.m. "	" SW 64	
				Wind moderate all day; mean		
				temperature ..	65 0	
				17	7 a.m. fine,	wind SW 64
				12	" "	" NNW 68
				6 p.m. foggy,	" NE 64	
				Wind moderate all day; mean		
				temperature ..	66 0	
				18	7 a.m. fine,	Calm 64
				12	" "	wind N 74
				6 p.m. "	" NE 64	
				Almost calm throughout the		
				day; mean temperature ..	69 0	
				Ditto ditto for the week	65 7	
				19	7 a.m. fine,	wind SSE 60
				12	" "	" N 64
				6 p.m. "	" NE 62	
				Moderate a.m., almost calm		
				p.m.; mean temperature ..	62 0	
				20	7 a.m. raining,	wind E 60
				12	" "	" ESE 64
				6 p.m. "	" ESE 56	
				Raining all day, very little		
				wind; mean temperature ..	60 0	
				21	7 a.m. fine,	wind E 56
				12	raining,	" W 62
				6 p.m. "	" W 56	
				Wind moderate all day; mean		
				temperature ..	59 0	

## August.



1867.

August		DEG.
22	7 a.m. fine; wind WNW	56
12	" " " WNW	60
	6 p.m. " " WNW	55
	A good breeze all day; mean temperature ..	57 0
23	7 a.m. fine, wind NW	55
13	" " " W	66
	6 p.m. " " W	60
	Wind moderate all day; mean temperature ..	60 5
24	7 a.m. fine, wind W	60
12	dull, cloudy, " W	68
	6 p.m. raining, " NE	60
	Wind moderate, and stormy, mean temperature ..	64 0
25	7 a.m. fog and rain, wind SSW	64
12	foggy, " W	68
	6 p.m. " " EW	58
	Wind moderate all day; mean temperature ..	63 0
	Ditto ditto for the week ..	60 7
26	7 a.m. fine, wind NW	52
12	" " " W	58
	6 p.m. " " W	52
	A good breeze all day; mean temperature ..	55 0
27	7 a.m. fine, wind SW	60
12	squally, " SW	64
	6 p.m. fine, " SW	60
	Wind rough all day with squalls of rain; mean temperature ..	62 0
28	7 a.m. fine, wind SW	64
12	" " " SW	68
	6 p.m. " " SW	64
	A good breeze all day; mean temperature ..	66 0
29	7 a.m. fine, wind SW	66
12	" " " SW	74
	6 p.m. " " SW	66
	A good breeze all day; mean temperature ..	70 0
30	7 a.m. fine, wind SW	70
12	" " " SW	78
	6 p.m. " " SE	70
	Wind moderate all day; mean temperature ..	74 0
31	7 a.m. raining, wind W	58
12	fine, " NW	60
	6 p.m. " " NW	56
	A good breeze all day; mean temperature ..	58 0
	Meantemperature for Aug, 1867	64 3

September.

1	7 a.m. fine, wind SW	58
12	" " " SW	70
	6 p.m. " " SW	60
	A good breeze all day; mean temperature ..	64 0
	Ditto ditto for the week	64 1

September		DEG.
2	7 a.m. raining, wind E	54
12	" " " NE	56
	6 p.m. " " NE	60
	A good breeze and stormy all day; mean temperature ..	53 0
3	7 a.m. fine, wind W	52
12	" " " SW	66
	6 p.m. " " WSW	58
	Wind moderate all day; mean temperature ..	69 0
4	7 a.m. fine, wind S	54
12	" " " WNW	66
	6 p.m. cloudy, " SW	60
	Wind moderate all day; mean temperature ..	60 0
5	7 a.m. cloudy, wind W	61
12	fine, " W	66
	6 p.m. " " W	58
	Moderate a.m., good breeze p.m.; mean temperature ..	62 0
6	7 a.m. fine, wind W	60
12	" " " W	70
	6 p.m. " " W	62
	Wind moderate all day; mean temperature ..	65 0
7	7 a.m. fine, wind W	61
12	" " " W	73
	6 p.m. dull, cloudy, " SW	60
	Wind moderate all day; mean temperature ..	66 5
8	7 a.m. fine, wind N	53
12	" " " N	58
	6 p.m. " " NE	52
	Wind moderate all day; mean temperature ..	55 0
	Ditto ditto for the week ..	62 9
9	7 a.m. fine, wind W	54
12	" " " WNW	64
	6 p.m. " " WNW	56
	Wind moderate all day; mean temperature ..	59 0
10	7 a.m. dull, cloudy, wind SW	58
12	" " " SW	69
	6 p.m. " " SW	64
	A good breeze all day; mean temperature ..	63 5
11	7 a.m. dull, cloudy, wind NE	52
12	" " " NE	54
	6 p.m. " " NE	52
	A good breeze and stormy all day; mean temperature ..	53 0
12	7 a.m. fine, wind SSW	51
12	" " " SW	64
	6 p.m. " " SW	55
	Wind moderate all day; mean temperature ..	57 5
13	7 a.m., rain and fog, wind W	56
12	foggy, " " W	63
	6 p.m. " " W	56
	A good breeze a.m., moderate p.m.; mean temperature ..	59 5

1867.

September	DEG.
14 7 a.m. rain and fog, wind NW	50
12 fine, " NW	52
6 p.m. raining, " NW	50
A good breeze and stormy all day; mean temperature ..	51 0
15 7 a.m. fine, wind NW	50
12 " " WNW	53
6 p.m. " " W	48
A good breeze all day; mean temperature ..	50 5
Ditto ditto for the week	56 1
16 7 a.m. fine, wind W	50
12 " " W	56
6 p.m. " " S	48
A fine day with light shifting winds; mean temperature ..	52 0
17 7 a.m. fine, wind S	52
12 " " NE	54
6 p.m. " " S	48
A beautiful day, wind moderate; mean temperature ..	51 0
18 7 a.m. fine, wind SW	56
12 raining, " SW	58
6 p.m. " " SW	52
Wind boisterous all day; mean temperature ..	55 0
19 7 a.m. fine, wind N	52
12 " " N	54
6 p.m. " " NW	50
A good breeze all day; mean temperature ..	52 0
20 7 a.m. fine, wind S	46
12 " " SW	58
6 p.m. " " SW	54
A good breeze all day; mean temperature ..	52 0
21 7 a.m. rain & fog, wind W	53
12 fine, " WNW	58
6 p.m. " " Calm	55
Wind boisterous a.m. ..	55 5
22 7 a.m. fine, wind S	48
12 " " SW	58
6 p.m. " " SW	54
A beautiful day, wind moderate; mean temperature ..	53 0
Ditto ditto for the week ..	52 9
23 7 a.m. raining, wind S	50
12 " " NE	50
6 p.m. fine, " NE	45
Wind moderate a.m., rough p.m.; mean temperature ..	47 5
24 7 a.m. fine, wind NW	40
12 " " NW	48
6 p.m. " " WNW	40
Wind boisterous all day; mean temperature ..	44 0
25 7 a.m. raining, wind W	50
12 fine, " W	58
6 p.m. " " W	54
Wind boisterous all day; mean temperature ..	54 0

September	DEG.
26 7 a.m. raining, wind NE	54
12 foggy, " NE	55
6 p.m. " " NE	53
Almost calm a.m., moderate p.m.; mean temperature ..	54 0
27 7 a.m. fine, wind NE	52
12 foggy, " NE	52
6 p.m. raining, " NE	50
A good breeze with rain p.m.; mean temperature ..	51 0
28 7 a.m. fine, wind W	50
12 " " W	56
6 p.m. " " W	54
A beautiful day, wind moderate; mean temperature ..	53 0
29 7 a.m. fine, wind SW	55
12 " " SW	58
6 p.m. " " SW	56
A beautiful day, wind moderate; mean temperature ..	56 5
Ditto ditto for the week	51 3
30 7 a.m. raining, wind NE	48
12 " " NE	50
6 p.m. " " SE	50
A good breeze all day; mean temperature ..	49 0
Mean temperature for September, 1867 ..	55 2

## October.

1 7 a.m. fine, wind S	60
12 " " S	68
6 p.m. " " SSE	62
A beautiful day, wind moderate; mean temperature ..	64 0
2 7 a.m. fine, wind S	52
12 " " SSE	62
6 p.m. " " NE	64
A beautiful day, wind moderate; mean temperature ..	57 0
3 7 a.m. raining, wind WNW	50
12 cloudy, " W	52
6 p.m. stormy, " W	52
Wind moderate a.m., good breeze p.m.; mean temperature ..	51 0
4 7 a.m. stormy, wind W	46
12 fine, " WNW	44
6 p.m. stormy, " NW	40
Wind boisterous all day; mean temperature ..	43 0
5 7 a.m. fine, wind S	40
12 " " NW	58
6 p.m. " " NE	42
A lovely day, light shifting winds; mean temperature ..	49 0
6 7 a.m. stormy, wind SE	42
12 cloudy, " SSE	56
6 p.m. " " S	56
A good breeze all day; mean temperature ..	49 0
Ditto ditto for the week	51 7

1867.

October		DEG.	October		DEG.
7	7 a.m. raining, wind SW	46	19	7 a.m. foggy, wind WNW	44
12	rain and fog, " W	43	12	misty rain " WNW	44
6 p.m.	" " " NW	42	6 p.m.	" " " WNW	42
	Wind moderate all day; mean temperature ..	44 0		Wind moderate all day; mean temperature ..	43 0
8	7 a.m. stormy, wind NE	40	20	7 a.m. fine, wind NNW	34
12	cloudy, " NE	42	12	" " " NNW	40
6 p.m.	rain and snow, " NE	38	6 p.m.	" " " NNW	36
	Wind rough throughout the day; mean temperature ..	40 0		A good breeze all day; mean temperature ..	37 0
9	7 a.m. fine, wind N	34		Ditto ditto for the week	41 9
12	aleet, " N	36	21	7 a.m. dull, cloudy, wind W	40
6 p.m.	snow-squalls " NW	32	12	" " " SW	44
	Blowing a gale of wind all day; mean temperature ..	34 0	6 p.m.	stormy " SW	42
10	7 a.m. fine, wind NW	36		A good breeze all day; mean temperature ..	42 0
12	" " " NW	40	22	7 a.m. misty rain, wind SSW	50
6 p.m.	stormy, " NW	40	12	" " " SW	54
	Wind rough a.m., good breeze p.m.; mean temperature ..	38 0	9 p.m.	" " " SW	50
11	7 a.m. fine, wind N	40		A good breeze all day; mean temperature ..	52 0
12	" " " NE	42	23	7 a.m. raining, wind SW	50
6 p.m.	" " " NE	40	12	" " " W	48
	A beautiful day, wind moderate; mean temperature ..	41 0	6 p.m.	" " " N	38
12	7 a.m. fine, wind SE	33		A good breeze a.m., moderate p.m.; mean temperature ..	44 0
12	" " " SE	50	24	7 a.m. fine, wind N	32
6 p.m.	" " " SE	42	12	" " " NW	34
	A beautiful day, wind moderate; mean temperature ..	41 5	6 p.m.	" " " N	32
13	7 a.m. raining, wind S	42		A good breeze a.m., moderate p.m.; mean temperature ..	33 0
12	stormy " S	48	25	7 a.m. fine, wind E	30
6 p.m.	" " " S	46	12	" " " NE	34
	A good breeze all day; mean temperature ..	45 0	6 p.m.	" " " NE	32
	Ditto ditto for the week	40 5		A beautiful day, wind moderate; mean temperature ..	32 0
14	7 a.m. dull, cloudy, w. WNW	40	26	7 a.m. fine, wind E	28
12	" raining, " " NW	42	12	" " " NE	34
6 p.m.	" " " NE	38	6 p.m.	cloudy, " NE	33
	Wind moderate all day; mean temperature ..	40 0		Moderate a.m. good breeze p.m.; mean temperature ..	31 0
15	7 a.m. dull, cloudy, wind NE	38	27	7 a.m. snowing, wind NE	36
12	" " " N	41	12	rain and snow " N	36
6 p.m.	" " " NW	40	6 p.m.	cloudy, " N	36
	Moderate a.m., almost calm p.m.; mean temperature ..	39 5		A good breeze all day; mean temperature ..	36 0
16	7 a.m. fine, wind S	32		Ditto ditto for the week	35 7
12	" " " W	48	28	7 a.m. cloudy, wind W	38
6 p.m.	" " " SW	38	12	" " " W	40
	A lovely day and almost calm; mean temperature ..	40 0	6 p.m.	" " " W	38
17	7 a.m. fine, wind S	44		Moderate a.m., good breeze p.m.; mean temperature ..	39 0
12	dull, cloudy, " SW	48	29	7 a.m. fine, wind S	42
6 p.m.	stormy, " SW	46	12	" " " N	46
	A good breeze all day; mean temperature ..	46 0	6 p.m.	" " " NE	40
18	7 a.m. dull, cloudy, wind N	50		A very moderate and beautiful day; mean temperature ..	43 0
12	raining, " SW	52	30	7 a.m. fine, wind SE	32
6 p.m.	" " " WSW	44	12	cloudy, " S	46
	A good breeze all day; mean temperature ..	48 0	6 p.m.	" " " S	38
				Wind moderate all day; mean temperature ..	39 0

1867.

October		DEG.
31	7 a.m. fine, wind S	42
12	stormy, " S	50
	6 p.m. raining, " S	38
	Moderate a.m., good breeze p.m.; mean temperature ..	44 0
	Ditto ditto for October, 1867	42 7

## November.

1	7 a.m. fine, wind N	40
12	stormy, " N	44
	6 p.m. " " N	36
	A good breeze all day; mean temperature ..	40 0
2	7 a.m. fine, wind NE	34
12	" " " NE	37
	6 p.m. foggy, " E	35
	Wind moderate all day; mean temperature ..	35 5
3	7 a.m. misty rain, wind N	36
12	foggy, " NW	38
	6 p.m. " " NW	36
	Wind boisterous all day; mean temperature ..	36 5
	Ditto ditto for the week ..	39 5
4	7 a.m. fine, wind W	34
12	sleet, " S	40
	6 p.m. raining, " S	42
	Moderate a.m., boisterous p.m.; mean temperature ..	38 0
5	7 a.m. fine, wind WNW	34
12	" " " WNW	36
	6 p.m. " " NW	34
	A good breeze all day; mean temperature ..	35 0
6	7 a.m. fine, wind S	26
12	" " " S	38
	6 p.m. " " S	30
	Wind moderate all day; mean temperature ..	32 0
7	7 a.m. snowing, wind E	30
12	fine, " E	35
	6 p.m. " " E	30
	Wind moderate all day; mean temperature ..	32 5
8	7 a.m. fine, wind NE	30
12	" " " N	32
	6 p.m. " " NW	30
	A beautiful day, wind moderate; mean temperature ..	31 0
9	7 a.m. snowing, wind NW	28
12	" " " NW	34
	6 p.m. " " SW	36
	Wind moderate all day; mean temperature ..	32 0
10	7 a.m. cloudy, wind SSW	40
12	misty rain " SW	46
	6 p.m. foggy, " SW	44
	Wind moderate all day; mean temperature ..	43 0
	Ditto ditto for the week	34 7

November		DEG.
11	7 a.m. foggy, wind N	44
12	raining, " NE	40
	6 p.m. fine, " NW	40
	Almost calm a.m. and p.m., good breeze midday; mean temperature ..	42 0
12	7 a.m. dull, cloudy, wind SW	40
12	foggy, " N	43
	6 p.m. raining, " E	40
	Almost calm throughout the day; mean temperature ..	41 5
13	7 a.m. dull, cloudy, wind SSW	56
12	fine, " S	62
	6 p.m. squally, " S	58
	A good breeze all day, but very warm; mean temperature ..	59 0
14	7 a.m. raining, wind SW	42
12	stormy, " SW	43
	6 p.m. " " W	38
	Nearly calm a.m., good breeze p.m.; mean temperature ..	40 5
15	7 a.m. cloudy, wind NW	32
12	snowing, " NE	30
	6 p.m. dull, cloudy, " W	28
	Wind moderate but very variable; mean temperature ..	30 0
16	7 a.m. fine, wind NW	20
12	" " " NW	26
	6 p.m. " " NW	20
	A fine day, wind moderate; mean temperature ..	23 0
17	7 a.m. snowing & drifting w. SSE	26
12	snow and rain, " SSE	33
	6 p.m. misty rain " S	38
	A gale of wind a.m., good breeze p.m.; mean temperature ..	32 0
	Ditto ditto for the week	38 2
18	7 a.m. snowing, wind W	34
12	snowing & drifting " SW	35
	6 p.m. fine, " SSW	26
	A good breeze all day; mean temperature ..	30 5
19	7 a.m. fine, wind NW	24
12	" " " NW	22
	6 p.m. snowing, " W	22
	A good breeze all day; mean temperature ..	23 0
20	7 a.m. fine, wind N	22
12	snow-squalls, " NW	33
	6 p.m. " " W	22
	Wind moderate a.m., good breeze p.m.; mean temperature ..	22 5
21	7 a.m. snowing, wind SE	20
12	" " " SE	27
	6 p.m. fine, " NW	22
	Nearly calm a.m., good breeze p.m.; mean temperature ..	23 5
22	7 a.m. fine, wind N	20
12	" " " N	22
	6 p.m. " " N	20
	Wind moderate all day; mean temperature ..	21 0

1867.

November		DEG.
23	7 a.m. fine, wind SE	18
12	" " " SE	29
	6 p.m. snowing, " SE	24
	Almost calm throughout the day; mean temperature ..	23 5
24	7 a.m. dull, cloudy, Calm	28
12	" " " "	34
	6 p.m. " " " "	32
	A nice day for the time of year; mean temperature ..	31 0
	Ditto ditto for the week ..	25 0
25	7 a.m. dull, cloudy, wind SE	32
12	" " " " S	35
	6 p.m. " " " SW	34
	Wind moderate all day; mean temperature ..	33 5
26	7 a.m. dull, cloudy, wind SW	34
12	" " " " SW	38
	6 a.m. misty rain, " SW	38
	Wind moderate all day; mean temperature ..	36 0
27	7 a.m. misty rain, wind SW	42
12	" " " " SW	42
	6 p.m. snowing, " NW	36
	A good breeze all day; mean temperature ..	39 0
28	7 a.m. fine, wind SE	28
12	" " " " S	34
	6 p.m. " " " S	30
	Wind moderate all day; mean temperature ..	31 0
29	7 a.m. fine, wind S	28
12	" " " " NE	34
	6 p.m. " " " S	28
	A lovely day, and almost calm; mean temperature ..	31 0
10	7 a.m. dull, cloudy, wind S	29
12	rain-squalls, " S	35
	6 p.m. squally, " S	42
	Blowing a gale of wind all day; mean temperature ..	32 0
	Ditto for November, 1867	

December.

1	7 a.m. snowing, wind W	30
12	snow-squalls " WNW	28
	6 p.m. raining, " WNW	18
	A gale of wind and very heavy sea; mean temperature ..	23 0
	Ditto " for the week ..	32 2
2	7 a.m. light snow, wind NW	18
12	" " " " NW	22
	6 p.m. " " " E	22
	Wind moderate all day; mean temperature ..	20 0
3	7 a.m. fine, wind SW	22
12	" " " " S	28
	6 p.m. cloudy, " S	25
	Wind moderate all day, mean temperature ..	25 0

December.		DEG.
4	7 a.m. Fall of snow, w. NW	30
12	snow-squalls, " WNW	28
	6 p.m. " " " SW	25
	Blowing a good breeze all day; mean temperature ..	27 5
5	7 a.m. drifting snow, w. NW	14
12	snow-squalls, " WNW	15
	6 p.m. " " " WNW	14
	A good breeze and very heavy sea; mean temperature ..	14 5
6	7 a.m. light snow, wind NE	12
12	" " " " N	10
	6 p.m. " " " NW	10
	Wind moderate a.m., good breeze p.m.; mean temperature ..	11 0
7	7 a.m. snowing, wind SE	11
12	snowing & drifting " S	22
	6 p.m. light snow, " S	32
	A good breeze and squally all day; mean temperature ..	21 5
8	7 a.m. snowing, wind W	24
12	" " " " W	22
	6 p.m. " " " W	22
	A good breeze and squally all day; mean temperature ..	23 0
	Ditto ditto for the week ..	20 3
9	7 a.m. snowing, wind SW	13
12	fine, " SW	20
	6 p.m. " " " SW	14
	A good breeze all day; mean temperature ..	16 5
10	7 a.m. snowing, wind S	12
12	" " " " W	18
	6 p.m. " " " NW	14
	A very rough snowy day; mean temperature ..	15 0
11	7 a.m. fine, wind SE	6
12	" " " " S	18
	6 p.m. " " " SE	14
	A beautiful, moderate day; mean temperature ..	12 0
12	7 a.m. snowing, wind W	16
12	" " " " W	20
	6 p.m. " " " NW	18
	A very rough snowy day; mean temperature ..	19 0
13	7 a.m. light snow, wind N	15
12	" " " " E	16
	6 p.m. " " " SE	12
	Wind moderate all day; mean temperature ..	14 0
14	7 a.m. fine, wind E	Zero.
12	" " " " NE	9
	6 p.m. " " " E	4
	A beautiful day, wind moderate; mean temperature ..	4 5
15	7 a.m. fine, wind NW	12
12	" " " " W	22
	6 p.m. " " " E	20
	A lovely day for the time of year; mean temperature ..	17 0
	Ditto ditto for the week	13 8

1867.

December.		DEG.	December.		DEG.
16	7 a.m. dull, cloudy,	wind SE	24	7 a.m. snowing,	wind NE
	12 snowing,	" E		12 " "	" NW
	6 p.m. " "	" SE		6 p.m. " "	" W
	Almost calm a.m., very rough			A good breeze a.m., moderate	
	p.m.; mean temperature ..			p.m.; mean temperature ..	
17	7 a.m. dull and calm		25	7 a.m. snowing,	wind SW
	12 foggy,	wind N		12 " "	" NE
	6 p.m. snowing,	" NW		6 p.m. " "	" NE
	Wind moderate all day; mean			Moderate a.m., very rough p.m.;	
	temperature ..			mean temperature ..	
18	7 a.m. snowing,	wind N	26	7 a.m. fine,	wind SE
	12 " "	" NW		12 snowing,	" S
	6 p.m. " "	" NW		6 p.m. " "	" S
	Wind moderate all day; mean			Nearly calm a.m., very rough	
	temperature ..			p.m.; mean temperature ..	
19	7 a.m. snowing,	wind N	27	7 a.m. fine,	wind NW
	12 " "	" N		12 light snow,	" NW
	6 p.m. " "	" NW		6 p.m. fine,	" NW
	Wind moderate all day; mean			A good breeze all day; mean	
	temperature ..			temperature ..	
20	7 a.m. snowing,	wind NW	28	7 a.m. raining,	wind SW
	12 " "	" NW		12 fine,	" W
	6 p.m. " "	" NW		6 p.m. snowing,	" W
	Wind moderate a.m., good breeze			A good breeze all day; mean	
	p.m.; mean temperature ..			temperature ..	
21	7 a.m. fine and calm		29	7 a.m. fine,	wind WNW
	12 " "	wind E		12 snowing,	" NW
	6 p.m. light snow,	" E		6 p.m. snow-squalls,	" NW
	A beautiful day and almost calm;			A good breeze all day; mean	
	mean temperature ..			temperature ..	
22	7 a.m. dull, cloudy,	wind N		Ditto ditto for the week	
	12 light snow,	" N	30	7 a.m. vapoury,	wind WNW
	6 p.m. " "	" NW		12 light snow,	" NW
	Wind moderate all day; mean			6 p.m. " "	" NW
	temperature ..			A good breeze all day; mean	
	Ditto ditto for the week			temperature ..	
23	7 a.m. snow & drifting,	w. SE	31	7 a.m. snowing,	wind NW
	12 light snow,	" S		12 vapoury,	" NW
	6 p.m. " "	" SW		6 p.m. light snow,	" NW
	Very rough a.m., good breeze			A good breeze all day; mean	
	p.m.; mean temperature ..			temperature ..	
				Ditto ditto for the two days	
				Ditto for December, 1867	

