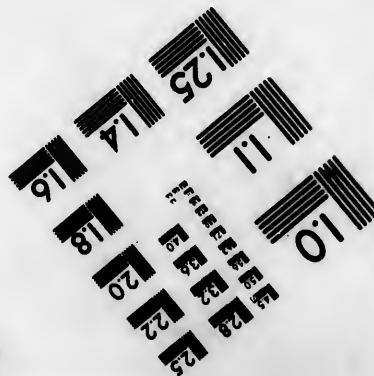
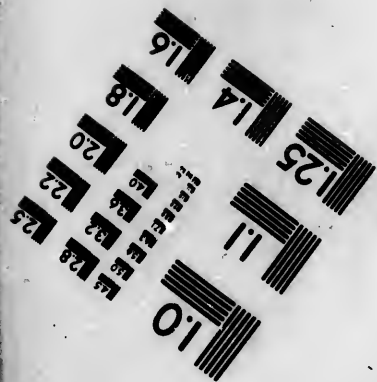
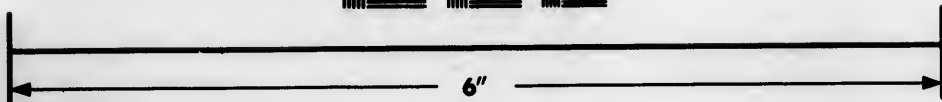
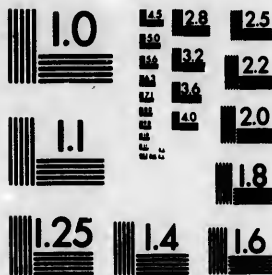


**IMAGE EVALUATION  
TEST TARGET (MT-3)**



**Photographic  
Sciences  
Corporation**

23 WEST MAIN STREET  
WEBSTER, N.Y. 14580  
(716) 872-4503

18  
20  
22  
25

**CIHM/ICMH  
Microfiche  
Series.**

**CIHM/ICMH  
Collection de  
microfiches.**



Canadian Institute for Historical Microreproductions / Institut canadien de microreproductions historiques

10  
11

**© 1984**

Technical and Bibliographic Notes/Notes techniques et bibliographiques

The Institute has attempted to obtain the best original copy available for filming. Features of this copy which may be bibliographically unique, which may alter any of the images in the reproduction, or which may significantly change the usual method of filming, are checked below.

L'Institut a microfilmé le meilleur exemplaire qu'il lui a été possible de se procurer. Les détails de cet exemplaire qui sont peut-être uniques du point de vue bibliographique, qui peuvent modifier une image reproduite, ou qui peuvent exiger une modification dans la méthode normale de filmage sont indiqués ci-dessous.

- Coloured covers/  
Couverture de couleur
- Covers damaged/  
Couverture endommagée
- Covers restored and/or laminated/  
Couverture restaurée et/ou pelliculée
- Cover title missing/  
Le titre de couverture manque
- Coloured maps/  
Cartes géographiques en couleur
- Coloured ink (i.e. other than blue or black)/  
Encre de couleur (i.e. autre que bleue ou noire)
- Coloured plates and/or illustrations/  
Planches et/ou illustrations en couleur
- Bound with other material/  
Relié avec d'autres documents
- Tight binding may cause shadows or distortion  
along interior margin/  
La reliure serrée peut causer de l'ombre ou de la  
distortion le long de la marge intérieure
- Blank leaves added during restoration may  
appear within the text. Whenever possible, these  
have been omitted from filming/  
Il se peut que certaines pages blanches ajoutées  
lors d'une restauration apparaissent dans le texte,  
mais, lorsque cela était possible, ces pages n'ont  
pas été filmées.
- Additional comments:/  
Commentaires supplémentaires:

- Coloured pages/  
Pages de couleur
- Pages damaged/  
Pages endommagées
- Pages restored and/or laminated/  
Pages restaurées et/ou pelliculées
- Pages discoloured, stained or foxed/  
Pages décolorées, tachetées ou piquées
- Pages detached/  
Pages détachées
- Showthrough/  
Transparence
- Quality of print varies/  
Qualité inégale de l'impression
- Includes supplementary material/  
Comprend du matériel supplémentaire
- Only edition available/  
Seule édition disponible
- Pages wholly or partially obscured by errata  
slips, tissues, etc., have been refilmed to  
ensure the best possible image/  
Les pages totalement ou partiellement  
obscurcies par un feuillet d'errata, une pelure,  
etc., ont été filmées à nouveau de façon à  
obtenir la meilleure image possible.

This item is filmed at the reduction ratio checked below/  
Ce document est filmé au taux de réduction indiqué ci-dessous.

10X	12X	14X	16X	18X	20X	22X	24X	26X	28X	30X	32X
						✓					

The copy filmed here has been reproduced thanks to the generosity of:

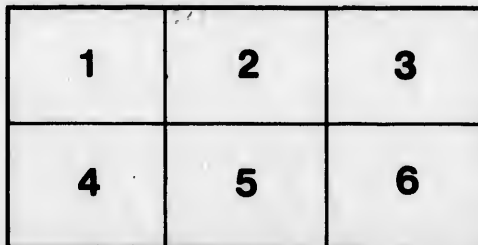
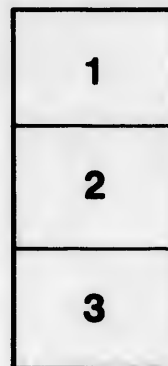
MacOdrum Library  
Carleton University

The images appearing here are the best quality possible considering the condition and legibility of the original copy and in keeping with the filming contract specifications.

Original copies in printed paper covers are filmed beginning with the front cover and ending on the last page with a printed or illustrated impression, or the back cover when appropriate. All other original copies are filmed beginning on the first page with a printed or illustrated impression, and ending on the last page with a printed or illustrated impression.

The last recorded frame on each microfiche shall contain the symbol  $\rightarrow$  (meaning "CONTINUED"), or the symbol  $\nabla$  (meaning "END"), whichever applies.

Maps, plates, charts, etc., may be filmed at different reduction ratios. Those too large to be entirely included in one exposure are filmed beginning in the upper left hand corner, left to right and top to bottom, as many frames as required. The following diagrams illustrate the method:



L'exemplaire filmé fut reproduit grâce à la générosité de:

MacOdrum Library  
Carleton University

Les images suivantes ont été reproduites avec le plus grand soin, compte tenu de la condition et de la netteté de l'exemplaire filmé, et en conformité avec les conditions du contrat de filmage.

Les exemplaires originaux dont la couverture en papier est imprimée sont filmés en commençant par le premier plat et en terminant soit par la dernière page qui comporte une empreinte d'impression ou d'illustration, soit par le second plat, selon le cas. Tous les autres exemplaires originaux sont filmés en commençant par la première page qui comporte une empreinte d'impression ou d'illustration et en terminant par la dernière page qui comporte une telle empreinte.

Un des symboles suivants apparaîtra sur la dernière image de chaque microfiche, selon le cas: le symbole  $\rightarrow$  signifie "A SUIVRE", le symbole  $\nabla$  signifie "FIN".

Les cartes, planches, tableaux, etc., peuvent être filmés à des taux de réduction différents. Lorsque le document est trop grand pour être reproduit en un seul cliché, il est filmé à partir de l'angle supérieur gauche, de gauche à droite, et de haut en bas, en prenant le nombre d'images nécessaire. Les diagrammes suivants illustrent la méthode.

étails  
s du  
modifier  
r une  
Image

s

rrata  
to

pelure,  
n à



32X

CA

CONTRIBUTIONS

TO

CANADIAN NATURAL HISTORY.

BY

W. S. M. D'URBAN AND ROBERT BELL.

*(Extracted from the Report of the Geological Survey for 1858.)*

Montreal:

PRINTED BY JOHN LOVELL, ST. NICHOLAS STREET.

1860.

CARLETON UNIVERSITY

CONTRIBUTIONS

TO

CANADIAN NATURAL HISTORY.

BY

W. S. M. D'URBAN AND ROBERT BELL.

Q4  
106  
D9

*(Extracted from the Report of the Geological Survey for 1858.)*

---

Montreal:

PRINTED BY JOHN LOVELL, ST. NICHOLAS STREET.

1860.

*Cal*  
*V*  
*th*  
*M*

1. *V*

2. *U*

3. *M*

4.

5.

• T  
purpor  
tuna i



JAN 12 1972

CONTRIBUTIONS  
TO  
CANADIAN NATURAL HISTORY.

---

*Catalogue of Animals and Plants,\* collected and observed in the Valley of the River Rouge and the neighbouring Townships, in the Counties of Argenteuil and Ottawa. By Mr W. S. M. D'Urban, Assistant to Sir W. E. Logan in 1858.*

VERTEBRATA.

CLASS MAMMALIA.

ORDER CHEIROPTERA.

1. *Vespertilio subulatus*, Say.—Rouge, August 8th and 10th. There are probably several species of bats in the district, but this is the only one of which a specimen was obtained.

ORDER CARNIVORA.

2. *Ursus Americanus*, Pallas.—Although no bears were actually seen by us, yet the evidence afforded by recent traces of them, and the information received from settlers and others, induced me to believe that they were numerous in the district.
3. *Mustela martes*, Linn.—The pine marten does not appear to be plentiful. One specimen was seen at Hamilton's Farm on the Rouge, about fifty miles from its mouth.
4. " *Canadensis*, Schreber.—Said to be common about Hamilton's Farm; I saw a specimen which had been shot there.
5. " *vison*, Gmel.—Abundant throughout the district.

---

\* The list of plants having been taken by Mr. D'Urban to England for the purpose of reference in regard to some points, was unfortunately lost on its return in the Hungarian, and there has not been time to prepare another.

6. *Mephitis chinga*, Tiedman.—Common about the settlements in Grenville, &c. 3.  
 7. *Lutra Canadensis*, Sabine.—Many were seen in the lakes throughout the district. 4.  
 8. *Vulpes fulvus*, Desm.—Reported to be common. 5.

## ORDER RODENTIA. 6.

9. *Castor fiber*, Linn.—Appears to be nearly extinct in the parts we explored, but seen by Sir. W. Logan between two and three miles east of Hamilton's Farm, and said to be numerous about forty miles above it. 7.  
 10. *Fiber Zibethicus*, Cuvier.—Very numerous throughout the district. 8.  
 11. *Arctomys monax*, Linn.—Said to be common about clearings in Grenville. A specimen was given to me which had just been killed in that township. 9.  
 12. *Tamias Lysteri*, Ray.—Township of Montcalm and about Hamilton's Farm; rare. 10.  
 13. *Sciurus Hudsonius*, Pennant.—Very numerous throughout the district. 11.  
 14. *Hystrix dorsata*, Linn.—This species is believed to occur in the district. 11.  
 15. *Lepus Americana*, Erxleben.—Common. 11.

## ORDER RUMINANTIA. 12.

16. *Cervus alces*, Linn.—This animal seems to be tolerably numerous above Hamilton's Farm, but none were seen in the district we passed through. 13.  
 17. " *Virginianus*, Gmel.—Tracks of this deer were frequently met with, and two were reported to have been seen near sixteen Island Lake. 14.  
 18. " *tarandus*, Linn.—One was shot on Hamilton's Farm while we were camped there. Traces of them were observed on Trembling Mountain. 15.

Besides the animals above enumerated, I may mention the racoon, *Procyon lotor*, said by the Indians to occur in the district; a wild cat, *Lynx Canadensis*, is supposed to have been heard in the township of Montcalm; a flying squirrel, *Pteromys volucella*? is said to occur, and near the Lake of Three Mountains I had a momentary view of a small *Arvicola*. 16.

## CLASS AVES. 17.

## ORDER RAPTORES. 17.

1. *Buteo* ——— ? —A buzzard was frequently seen hovering around our camps, but I was unable to obtain a specimen. 18. S  
 2. *Pandion haliaetus*, Linn.—On the 21st of May I shot the female of a pair of this species which had their nest on the summit of a large dead pine tree on an island in a small lake situated in the 8th and 9th ranges of Montcalm. Sir William Logan has called this sheet of water Eagle Nest Lake. An osprey was afterwards seen on several occasions when ascending the Rouge. 19.  
 20.  
 21.

3. *Falco sparverius*, Linn.—Sixteen Island Lake; very numerous on Hamilton's Farm in August, and last seen on the 7th of October.
4. *Astur palumbarius*, Linn.—Hamilton's Farm, in the end of August and beginning of September.
5. " *fuscus*, Gmel.—Near Gate Lake, May 16th; very numerous at Hamilton's Farm in the end of August.
6. *Circus cyaneus*, Linn.—Hamilton's Farm, end of August and in September.
7. *Syrnium nebulosum*, Linn.—Observed near Trembling Lake.
8. *Otus brachyotus*, Linn.—I saw a specimen of this species which had just been shot on Hamilton's Farm, and was informed that it is not uncommon there after harvest.
9. *Bubo Virginianus*, Gmel.—Numerous throughout the district.

## ORDER INSESSORES.

10. *Chordeiles Virginianus*, Briss.—A single bird seen at Hamilton's Farm in August.
11. *Chatura pelagica*, Linn.—Common throughout the district. They were last seen by me at Hamilton's Farm on the 25th of August.
12. *Hirundo purpurea*, Linn.—Common at Grenville Village, May 13th, but not afterwards met with.
13. " *bicolor*, Vieill.—Townships of Grenville and Montcalm, middle and latter part of May. Noticed near Hamilton's Farm about the middle of August.
14. " *fulva*, Vieill.—Townships of Grenville and Harrington, from May 14th to 24th, and last seen at Hamilton's Farm, August 21st.
15. " *rustica*, Linn.—Common in Grenville and Harrington, May 14th and 15th; Wentworth, June 4th; Hamilton's Farm, July 15th to the middle of August.
16. *Muscicapa tyrannus*, Linn.—Bevan's Lake; near the Indian Village at the Devil's rapids on the Rouge; about Hamilton's Farm.
17. " *acadica*, Gmel.—Observed near Bevan's Lake, July 1st; Hamilton's Farm, August 25th.
18. *Sylvicola coronata*, Lath.—About Sixteen Island and Eagle Nest Lakes; Hamilton's Farm; Trembling Lake. Very numerous from May 19th till September 9th.
19. " *virens*, Lath.—Common about Sixteen Island Lake, May 24th.
20. " *Blackburnia*, Lath.—Numerous about Sixteen Island and Eagle Nest Lakes, May 22nd and 24th, in company with the last two species.
21. " *activa*, Gmel.—Observed in the township of Grenville, May 24th and about Hamilton's Farm August 23rd and 25th.

22. *Sylvicola Canadensis*, Linn.—Hamilton's Farm; Trembling Lake; Lake of Three Mountains. From August 28th to September 23rd.
23. " *maculosa*? Lath.—Mouth of Devil's River, July 20th.
24. *Certhia familiaris*, Linn.—Throughout the whole district.
25. *Troglodytes hyemalis*, Vieill.—Seen occasionally at numerous localities up to September 26th.
26. *Parus atricapillus*, Linn.—First observed, August 17th, when we were camped about a mile below Hamilton's Farm, occasionally seen till the end of September.
27. *Regulus satrapa*, Lich.—First observed August 28th, at Hamilton's Farm
28. *Sialia Wilsoni*, Swains.—Grenville, October 14th.
29. *Turdus migratorius*, Linn.—Throughout the district up to October 15th.
30. " *mustelinus*, Gmel.—Not uncommon throughout the district up to the end of September.
31. *Sciurus aurocapillus*, Lath.—Very numerous throughout the district.
32. *Alauda alpestris*, Linn.—Hamilton's Farm, end of September.
33. *Emberiza socialis*, Wils.—About all clearings visited, up to October 18th.
34. *Niphaea hyemalis*, Linn.—Throughout the district.
35. *Fringilla melodia*, Wils.—About clearings throughout the district.
36. " *Pennsylvanica*, Lath.—Very common in the woods throughout the district.
37. *Erythrospiza purpurea*, Gmel.—Balsam Lake, June 14th; Hamilton's Farm July 15th.
38. *Coccyzus ulovicianus*, Linn.—Clearings about Gate Lake, May 16th and 17th.
39. *Agelaius Phœnicus*, Linn.—Grenville; Sugar-bush or Round Lake; Bevan's Lake; near Hamilton's Farm.
40. *Icterus Ballinorus*, Linn.—Said to have been heard singing at Balsam Lake, June 14th.
41. *Quiscalus versicolor*, Vieill.—Grenville, May 14th.
42. *Corvus Americanus*, Aud.—Common throughout the district.
43. *Garrulus cristatus*, Linn.—Abundant everywhere. They were seen in flocks of thirty or forty at Hamilton's Farm.
44. " *Canadensis*, Linn.—Abundant throughout the district.
45. *Vireo olivaceus*, Linn.—Common throughout the district, up to August 25th.
46. *Bombycilla Carolinensis*, Briss.—Observed only about clearings.
47. *Sitta Canadensis*, Linn.—Throughout the district, from May 26th till September 20th.
48. *Trochilus colubris*, Linn.—Occasionally seen from May 27th till August 12th.
49. *Alcedo alcyon*, Linn.—Very abundant the whole way up the Rouge till October 11th. Rarely seen on the lakes.
50. *Picus pileatus*, Linn.—One shot on Sixteen Island Lake, May 27th, and another seen on the Rouge, August 8th.
51. " *villosus*, Linn.—Grenville, Harrington and Wentworth.
52. " *pubescens*, Linn.—Throughout the district.
53. " *varius*, Linn.—Sixteen Island Lake, May 27th; Trembling Lake, September 13th.

54.  
55.  
56.  
57.  
58.  
59.  
60.  
61.  
62.  
63.  
64.  
65.  
66.  
67.  
68.  
69.  
70.  
71.  
72.  
73.  
74.  
75.  
The  
Picus  
were

54. *Picus articus*, Swains.—One specimen observed in Harrington, October 15th.
55. " *auratus*, Linn.—Hamilton's Farm, end of August and beginning of September.
56. *Coccyzus erythrophthalmus*, Wils.—Sugar-bush Lake, June 25th; Indian Village on the Rouge, July 16th.

## ORDER RASORES.

57. *Ectopistes migratoria*, Linn.—Throughout the district, from spring till the beginning of October. Not common.
58. *Tetrao umbellus*, Linn.—Abundant throughout the district.

## ORDER GRALLATORES.

59. *Fulica Americana*, Gmel.—A pair seen, September 14th, in a small lake near the Lake of Three Mountains.
60. *Totanus macularius*, Wils.—Common all along the Rouge and in the numerous lakes of the district.
61. " *solitarius*, Wils.—Along the Rouge from August 12th to September 13th.
62. " *vociferus*, Wils.—One specimen seen on Trembling Lake, September 11th.
63. *Microptera Americana*, Aud.—Said to have been heard in the swamps about Hamilton's Farm, September 2nd.
64. *Ardea nycticorax*, Linn.—A pair seen flying over head, when we were camped near Gate Lake, May 17th.
65. " *lentiginosa?* Swains.—Bevan's Lake during July.

## ORDER NATORES.

66. *Anas obscura*, Gmel.—Sixteen Island and Bevan's Lakes; Rouge, and the small lakes on either side of it.
67. " *sponsa*, Linn.—One seen on Bevan's Lake, October 16th.
68. " *discors*, Linn.—One observed on Trembling Lake, September 11th.
69. *Fuligula marila?* Linn.—Sixteen Island Lake, May 20th.
70. " *clangula*, Linn.—Sixteen Island Lake in May; Devil's River, July 20th.
71. *Mergus serrator*, Linn.—Rouge, and almost every lake we visited.
72. " *cucullatus?* Linn.—Lake of Three Mountains, September 23rd and 25th.
73. *Larus argentatus*, Brunnich.—A large gull, supposed to be of this species, was frequently seen at the end of May, on Sixteen Island Lake.
74. *Colymbus glucialis*, Linn.—Seen in almost every lake visited by us.
75. *Podiceps Carolinensis?* Lath.—I observed a grebe on Balsam Lake, June 14th, which appeared to be of this species.

The rice bunting, *Dolichonyx orizivora*, and the red-headed woodpecker, *Picus erythrocephalus*, were observed about Point Fortune on the Ottawa, but were not met with in the woods.

## CLASS REPTILIA.

## ORDER CHELONIA.

1. *Chelydra serpentina*, Schw.—*Emysaurus serpentina*, Linn.—I was given a shell of this species by G. W. Albright, Esq., P. L. S., who obtained it on the Devil's River. The carapace is one foot long and nine inches broad.
2. *Glyptemys insculpta*, Agassiz.—*Emys insculpta*, Leconte.—I was shown the shell of a specimen of this species, which had been obtained on a small sandy island in the Rouge in Arundel, and I also obtained a fragment of a shell at the mouth of the Devil's River.

## ORDER OPHIDIA.

3. *Eutainia sirtalis*, Baird & Girard. *Tropidonotus sirtalis*, Holbrook.—Abundant in the Townships of Grenville, Harrington, De Salaberry, and at Hamilton's Farm.  
No other Ophidian reptile was seen, but reports of a water snake, said to inhabit the lakes, came to my knowledge.

## ORDER BATRACHIA.

4. *Rana Catesbiana*, Shaw.—*R. pipiens*, Holbrook.—Abounds in every lake and pond throughout the district.
5. " *nigricans*, Agassiz.—Abundant at Balsam, Sixteen Island and Sugar-bush Lakes in May and June.
6. " *pipiens*, Gmel. *R. halecina*, Holbrook et aliorum.—Abundant in Sugar-bush Lake in June.
7. *Hyla versicolor*? Leconte.—Said to have been heard about Sixteen Island Lake.
8. *Bufo Americana*, Leconte.—Common throughout the district.
9. *Plethodon erythronota*, Green.—Abundant in the townships of Wentworth and Montcalm in May.
10. *Spelerpes bilineata*, Green.—Township of Montcalm.
11. *Triton*? (undetermined).—One specimen taken in Sixteen Island Lake June 2nd.  
A "lizard" was reported as inhabiting a small stream crossing the portage between Gut and Gate Lakes.

## CLASS PISCES.

## ORDER ACANTHOPTERI.

1. *Perca flavescens*, Cuvier.—Numerous in Sugar-bush, Bevan's and Bark Lakes, Montcalm; in a small lake on lot 11, range 3, of the same township, and also in a lake about three miles east of Hamilton's Farm.

## ORDER MALACOPTERI.

2. *Pimelodus canosus*, Richardson.—Very abundant in the same lakes (with the exception of the last) as the perch.
3. *Esox boreus* ? Agassiz.—The specimen preserved, was caught in the small lake on lot 11, range 3, Montcalm, and agrees very well with the description of *E. boreus* in Agassiz's "Lake Superior," p. 317, with the exception, that the lateral line is very indistinct, instead of being "very distinct." Pike were numerous in the same lakes as the cat-fish and perch and in the Rouge as far up as we ascended.
4. *Salmo fontinalis*, Mitchill.—Abounds in nearly all the lakes and streams in the district. In those lakes where cat-fish, pike and perch occur, no trout were caught.
5. *Salmo*.—A species of trout, which I have been unable to determine, was found in Sixteen Island, Trembling and Three Mountain Lakes.
6. *Coregonus*.—I saw several specimens of a *Coregonus* which had just been taken in Bevan's Lake, October 15th, but was unable to preserve a specimen
7. *Catostomus*.—Two species of "sucker" were said to have been taken in Sixteen Island Lake whilst I was absent, and were spoken of as the "mullet" and "black sucker."
8. *Leuciscus*.—A large fish known as the carp, usually about seventeen inches in length and about two pounds in weight, was abundant in all the lakes and in the Rouge and Devil's Rivers. On the sides, the scales have a beautiful bronze or golden lustre, and the basal half and margin of each is black. The fin-rays are as follows: Br. 3, D. 9. C. 20. V. 8. P. 16. This fish may be *Cyprinus Corporalis*, Mitchill, but does not agree satisfactorily, with any species I have seen described.
9. " *pulchellus*, Storer.—This was the most abundant fish in all the lakes and rivers throughout the district.
10. *Leuciscus frontalis*, Agassiz.—Abundant in streams flowing into the small lake on lot 11, range 3, Montcalm. The specimens collected agree exactly with the figure and description of this species in Agassiz's "Lake Superior," except that instead of fourteen, they have sixteen rays in their pectoral fins.
11. " ? —A small species which I cannot find described, though evidently very distinct, was common in the same stream with the last.

All the lakes swarmed with the young of various *Leucisci*, which are called dace and chub. Several species besides those above mentioned were met with in Trembling and Three Mountain Lakes, but I had no means of preserving specimens.

## ARTICULATA.

### CLASS INSECTA.

#### ORDER COLEOPTERA.

Besides the 114 species of Coleoptera enumerated in the following catalogue, many others were collected, but were unfortunately lost by the accidental fracture of the bottle which contained them.

I have added a list of 34 species, not observed in this district by myself, but brought by Mr. Robert Bell from the Augmentation of Grenville on the north, and the neighbourhood of L'Original on the south bank of the Ottawa.

1. *Cicindela longilabris*, Say.—Hamilton's Farm on the River Rouge, 2nd September.
2. " *vulgaris*, Say.—Very abundant on sand-banks, River Rouge, August.
3. " *Baltimorensis*, Herbst. (*repanda*, Say.)—Common on sand-banks, River Rouge, July and August.
4. *Lebia viridis?* Say.—Huckleberry Rapids, River Rouge, DeSalaberry, 30th July.
5. *Patrobus longicornis*, Say.—Sixteen-Island Lake, &c., Montcalm, May and June.
6. *Platynus sinuatus*, Dej.—Under dead logs, Sixteen Island Lake, &c., township of Montcalm, May and June.
7. " *retractus*, Lec.—With the last species.
8. " *obsoletus*, Say.—With the last two species.
9. *Pæcilus lucublandus*, Say.—Under stones near the town of Grenville, 13th May.
10. *Pterostichus fastidatus*, Dej.—Under bark of decaying logs, Sixteen Island Lake, Montcalm, end of May; Lake of Three Mountains, end of September.
11. " *patruelis*, Dej.—River Rouge.
12. " *caudicalis*, Say.—Under stones near Grenville, 13th May.
13. " *orinomum*, Leach (*vitresis*, Esch.)—Township of Montcalm, June.
14. " *Luczotii*, Dej. (var. præc?)—Sixteen Island Lake, Montcalm, May and June.
15. *Lophoglossus scrutator*, Lec.—Under stones near Grenville, 13th May.
16. *Rembus major*, Lec.—" " " "
17. *Chlænium impunctifrons*, Say — " " " "
18. *Cychrus (Sphæroderus) Brevoorti*, Lec.—Under dead logs, Bevan's Lake, Montcalm, 4th July.
19. *Notiophilus punctatus*, Lec.—On rocks, Huckleberry Rapids, River Rouge, DeSalaberry, 27th July.
20. *Bembidium impressum*, Fabr.—On wet sand, River Rouge, 13th August.
21. " *punctatostriatum*, Say —Very abundant on wet sand, River Rouge July and August.



which are called  
I were met with  
of preserving

wing catalogue,  
the accidental

by myself, but  
renville on the  
of the Ottawa.  
River Rouge, 2nd

, River Rouge,

on sand-banks,  
st.  
Salaberry, 30th

Montcalm, May and  
Lake, &c., town-  
June.

Grenville, 13th

, Sixteen Island  
Lake of Three

h May.

Montcalm, June.  
Montcalm, May

13th May.

Bevan's Lake,  
s, River Rouge,

3th August.

d, River Rouge

22. *Bembidium patruelis*, Dej.—Abundant on wet sand, River Rouge, 13th Aug
23. " *l. idum*, Lec.—Under stones near Grenville, 13th May.
24. *Agabus s. latus*? Say.—In Sixteen Island Lake, Montcalm, end of May.
25. *Coptotoma interrogatus*, Fabr.—In Sugar-bush Lake, Montcalm, 23rd June.
26. *Hydroporus proximus*, Aubé.—With the last species.
27. *Haliphys immaculaticollis*, Harris.—With the last two species.
28. " *cribarius*, Lec.—Very abundant in Sugar-bush Lake, Montcalm, 23rd June.
29. *Gyrinus* (several species not determined)—In various Lakes.
30. *Dineutes* (not named)—Very abundant, Sugar-bush Lake, Montcalm, 23rd June.
31. *Philhydus cinctus*, Say.—In a small stream crossing the portage between Gate and Gut Lakes, Wentworth, and in Sugar-bush Lake, Montcalm.
32. *Necrophorus lunatus*, Lec.—Huckleberry Rapids, River Rouge, De Salaberry, 27th July.
33. " *pygmaeus*, Kirby.—Township of Montcalm, 20th June.
34. *Silpha marginata*, Fabr.—Abundant under putrid fish, Sixteen Island Lake, Montcalm, 1st June.
35. *Homalota* (not determined)—Township of Montcalm, June.
36. *Tachyporus* (not determined) " " "
37. *Tachinus fumipennis*, Say.—In bear's dung, Chain Lake, Montcalm, 17th June.
38. " *conformis*, Dej.—Township of Montcalm, June.
39. *Philonthus cyanipennis*, Fabr.—In a fungus on a rotten tree, River Rouge, 13th August.
40. " (not determined)—Under stones near Grenville, 13th May.
41. *Stenus* (not determined)—Numerous on wet sand, River Rouge, Arundel, July.
42. " (not determined)—Numerous on wet sand, River Rouge, near Hamilton's Farm, 13th August.
43. *Oxytelus Pennsylvanicus*, Er.—Common in our tents throughout the district.
44. *Anthobium dimidiatum*, Mels.—Township of Montcalm, June.
45. *Platysoma parallelum*, Say.— " " "
46. *Carpophilus niger*, Er.— " " "
47. *Epuræa*, (not determined) " " "
48. *Cucujus clavipes*, Oliv.—One specimen taken as it pitched on the mane of a horse, Township of Harrington, 15th May.
49. *Pediacus planus*, Lec.—Very abundant in the tents, Huckleberry Rapids, end of July.
50. *Dermestes lardarius*, Linn.—Observed about the provisions, Sixteen Island Lake, Montcalm.
51. *Anthrenus castaneæ*, Mels.—Township of Montcalm, June.
52. *Platycerus depressus*, Lec.—Near Huckleberry Rapids, River Rouge, De Salaberry, July.
53. *Onthophagus Hecate*, Pz.—Near Huckleberry Rapids, River Rouge, De Salaberry, 2nd August.
54. *Geotrupes Egeriei*, Germ. (*microphagus*, Say.) Woods near Hamilton's Farm, 31st August.

55. *Aphodius fimetarius*, Fabr.—Abundant in cow-dung, Hamilton's Farm, August.
56. *Dichelonycha subvittata*, Lec.—Abundant throughout the district, June to August.
57. *Osmoderma scabra*, Beauv.—River Rouge, July and August.
58. *Nichius piger*, Fabr.—On blossoms of *Viburnum opulus*, Sugar-bush Lake, and on white clover blossoms, and bleeding stumps of yellow birch, Bevan's Lake, Montcalm, end of June and beginning of July.
59. *Ancylocheira maculiventris*, Say.—Near Silver Mountain, River Rouge, 12th August.
60. *Cryptohypnus silaceipes*, Germ.—Under stones near Grenville, 13th May.
61. *Dolopius fucosus*, Lec.—Township of Montcalm, June.
62. " *stabilis*, Lec.— " " "
63. *Corymbites triundulatus*, Randall.—Township of Montcalm, end of May.
64. *Pyraetomena angulata*, Say.—Common, Sugar-bush Lake, Montcalm, 23d to 26th June.
65. *Ellychnia corrusca*, Linn.—Under stones near Grenville, 13th May.
66. " *lacustris*, Lec.—Abundant in the woods of Harrington, middle of May; Hamilton's Farm, and Lake of Three Mountains, August and September.
67. *Digrapta terminatis*, Say.—Bevan's Lake, 29th June, and 5th July, and Hamilton's Farm, 31st August.
68. *Eros coccinatus*, Say.—Sixteen-Island Lake, &c., Montcalm, end of May.
69. " *molis*, Lec.—Huckleberry Rapids, River Rouge, DeSalaberry, 2nd August.
70. *Podabrus modestus*, Say.—About clearings, Bevan's Lake, Montcalm, 2nd July.
71. *Telephorus rotundicollis*, Say.—Abundant " " "
72. " *carolinus*, Fabr.— " " "
73. " *fraxini*, Say.—Township of Montcalm, June.
74. *Anobium foveatum*, Kirby.—Abundant in a rotten tree, Bevan's Lake, 4th July.
75. *Cis* (not determined)—Township of Montcalm, June.
76. *Pedilus collaris*, Say.— " " "
77. *Mordella nigricans*, Mels.— " " "
78. *Meloe rugipennis*, Lec.—Hamilton's Farm, 31st August, and Grenville, 14th October.
79. *Cistela* (not determined)—Very abundant on leaves of bass-wood, Sugar-bush Lake, Montcalm, 26th June.
80. " (not determined)—River Rouge.
81. *Nyctobates* (not determined)—Under logs on grass-land, Hamilton's Farm August.
82. *Upis reticulatus*, Say.—(*ceramboides*, Linn.)—With the last species.
83. *Bolitophagus cornutus*, Pz.—Larvæ and Pupa in a boletus, Huckleberry Rapids, DeSalaberry, 3rd August.
84. *Apion* (not determined)—Township of Montcalm.
85. *Sitona lepidus*, Sch.—Near Hamilton's Farm.

- Hamilton's Farm,  
district, June to  
st.  
Sugar-bush Lake,  
ms, and bleeding  
van's Lake, Mont-  
cain of July.  
River Rouge, 12th  
ville, 13th May.  
m, end of May.  
Montcalm, 23d to  
13th May.  
ington, middle of  
nd Lake of Three  
ctember.  
and 5th July, and  
ust.  
m, end of May.  
uge, DeSalaberry,  
e, Montcalm, 2nd  
"  
"  
Bevan's Lake, 4th  
nd Grenville, 14th  
ass-wood, Sugar-  
June.  
Hamilton's Farm  
st species.  
etus, Huckleberry  
ugust.
86. *Hylobius* (near *pineti*)—Sixteen Island Lake, 1st June.  
87. " *pales*, Herbst.—Township of Montcalm, June.  
88. *Tomicus* (not named) " " "  
89. *Saperda tridentata*, Oliv.—Base of Silver Mountain, Rouge, 10th Aug.  
90. *Monohammus confusor*, Kirby.— " " " "  
91. " *scuteilatus*, Say.—Numerous, Bevan's Lake, 7th July; and abundant the whole way up the Rouge, to the end of August.  
92. *Encyclops caruleus*, Say.—One specimen taken on blossoms of *Viburnum opulus*, Sugar-bush Lake, Montcalm, 26th June.  
93. *Acmæop. proteus*, Kirby.—Township of Montcalm, June.  
94. *Evodinus monticola*, Randall.—Sixteen-Island Lake, 30th May; and abundant on blossoms of *Viburnum opulus*, Sugar-bush Lake, end of June.  
95. *Leptura Canadensis*, Oliv.—Abundant on blossoms of *Spiræa salicifolia*, River Rouge, July and August.  
96. " *vittata*, Oliv.—Near Huckle-berry Rapids, DeSalaberry, 15th July.  
97. " *pubera*, Say.—Abundant on blossoms of *Viburnum opulus*, Sugar-bush Lake, Montcalm, 25th June.  
98. " *proxima*, Say.—Near Huckleberry Rapids, DeSalaberry, 26th July.  
99. " *mutabilis*, Lec.—On blossoms of *Viburnum opulus*, Sugar-bush Lake, end of June.  
100. *Donacia palmata*, Oliv.—In blossoms of *Nuphar advena*, (Yellow Water-lily), Sugar-bush Lake, end of June.  
101. " *subtilis*, Kunze.—In a small Lake near Lake of Three Mountains, 14th September.  
102. " *pusilla*, Say.—Sugar-bush Lake, Montcalm, end of June.  
103. " *flavipes*, Kirby.— " " "  
104. *Syneta tripla*, Say.—Township of Montcalm.  
105. *Chrysomela scuirris*, Lec.—Abundant on alders throughout the district, from the end of June to the end of September.  
106. " *spiræa*, Say.—Very abundant, Sugar-bush Lake, 25th June.  
107. " *interrupta*, Fabr.—Abundant on alders, Sixteen-Island and Sugar-bush Lakes, Montcalm, May and June. Larva abundant on alder leaves, June 25.  
108. *Chrysomela Vitellina*, Linn.—Abundant on oak and poplar leaves, Sixteen Island and Sugar-bush Lakes, May and June.  
109. *Systema pontalis*, Fabr.—Township of Montcalm, June.  
110. *Phyllobrotica decorata*, Say. (*Olivieri*, Kirby.)—Very abundant on *Scutellaria galericulata* and *laterifolia*, River Rouge, July and August.  
111. *Adoxus vitis*, Fabr.—Amongst dead leaves, Gate Lake, Wentworth, 16th May.  
112. *Chrysochus auratus*, Fabr.—Abundant on *Apocynum androsamifolium* and *cannabinum*, Bevan's Lake, Huckleberry Rapids, &c., July.  
113. *Galleruca sagittariæ*, Kirby.—Township of Montcalm, June.  
114. *Coccinella picta*, Randall.— " " "

The following are the thirty-four species of Coleoptera from L'Orignal and the Augmentation of Grenville, collected by Mr. R. Bell.

<i>Cymindis reflexa</i> , Lec.	<i>Hister perplexus</i> ? Lec.
<i>Calathus gregarius</i> , Say.	<i>Ips quadrisignatus</i> , Say.
<i>Platynus capripennis</i> , Say.	<i>Cytilus varius</i> , Fabr.
<i>Pterostichus erythropus</i> , Dej.	<i>Lachnosterna fusca</i> , Frollich.
" <i>adjunctus</i> , Lec.	<i>Osmoderma eremicola</i> , Knoch.
<i>Amara angustata</i> , Say.	<i>Photuris Pennsylvanica</i> , Geer.
" <i>impuncticollis</i> , Say.	<i>Trichodes Nuttallii</i> , Kirby.
<i>Anisodactylus Baltimcrensis</i> , Say.	<i>Thanasimus dubius</i> , Fabr.
" <i>Harrisii</i> , Lec.	<i>Tenebris molitor</i> , Linn.
" <i>rusticus</i> , Say.	<i>Ipthinus Pennsylvanicus</i> , Geer.
<i>Harpalus Pennsylvanicus</i> , Geer.	<i>Orthosoma unicolor</i> , Drury.
" <i>herbivagus</i> , Say.	<i>Saperda vestita</i> , Say.
<i>Chlaenius sericeus</i> , Forst.	• <i>Chelymorpha cribaria</i> , Fabr.
" <i>tricolor</i> , Dej.	<i>Haltica collaris</i> , Fabr.
<i>Acilius fraternus</i> , Harris.	<i>Chrysomela trimaculata</i> , Fabr.
<i>Silpha Surinamensis</i> , Latr.	<i>Helodes trivittata</i> , Say.
<i>Pæderus littorarius</i> , Grav.	<i>Hippodamia 13-punctata</i> , Linn.

#### ORDER LEPIDOPTERA.

With the exception of the *Rhopalocera*, the greater portion of the *Lepidoptera* collected are still undetermined. Some of the *Heterocera* enumerated below were named for me at the British Museum by Mr. Francis Walker, to whom I am much indebted.

#### *Rhopalocera.*

115. *Papilio turnus*, Linn.—Abundant throughout the whole district, from May 30th till the end of July.
116. "    *asterias*, Fab.—A large black butterfly, seen on the 17th June at Balsam Lake I supposed to be of this species.
117. *Colias philodice*, Godt.—Grenville Village, June 5th; along the Rouge from the 30th June till the middle of September; again seen at Grenville, October 14th and 18th.
118. *Pieris oleracea*, Harris.—Abundant throughout the whole district, from the middle of May till the end of June. A few seen at Hamilton's Farm, end of August.
119. *Danais Archippus*, Fab.—A single specimen seen flying across the Rouge a little above Silver Mountain on the 12th of July.
120. *Debis Portlandia*, Boisd.—First seen on the 2nd July, at Bevan's Lake. Abundant in the woods along the Rouge as far as Silver Mountain till the first week in August. As this is generally supposed to be a southern species, it is not a little remarkable that it should be so abundant to the north of the Ottawa.

in L'Original and

ec.

Say.

Frolich.

a, Knoch.

ica, Geer.

Kirby.

Fabr.

nn.

icus, Geer.

Drury.

v.

a, Fabr.

or.

ata, Fabr.

ay.

ctata, Linn.

of the *Lepidop-*  
*cerca* enumerated  
Francis Walker, to

e district, from

the 17th June at

e of this species.

ong the Rouge

iddle of Septem-

e, October 14th

e district, from

nd of June. A

end of August.

ross the Rouge

on the 12th of

t Bevan's Lake.

g the Rouge as

he first week in

ly supposed to

not a little re-

o abundant to

121. *Hipparchia nephele*? Kirby.—Abundant amongst grass on Hamilton's Farm, from the 22nd August till the beginning of September.
122. *Limenitis Arthemis*, Drury.—Very abundant throughout the district, from the 26th June till the end of July, a few lingering till the middle of August.
123. *Cynthia cardui*, Linn.—One specimen met with at Hamilton's Farm on the 21st August.
124. *Vanessa Atalanta*, Linn.—I observed a butterfly which appeared to be of this species, at Sugar-bush Lake on the 24th of June.
125. " *Antiopa*, Linn.—Grenville Village, May 13th; a few seen in the township of Montcalm in June and near Silver Mountain on the 12th of August.
126. " *Milberti*, Godt., *furcillata*, Say.—Grenville Village, May 14th; Rouge, July 10th, and occasionally seen at Hamilton's Farm, up to the 31st August.
127. " *J. album*, Boisd.—Common throughout the district, from May 19th till the end of September. One observed near Grenville on the 18th of October.
128. *Grapta Progne*, Fab.—Abundant everywhere, from the 14th May till the middle of September.
129. " *C. album*, Godt.—I took several specimens of a *Grapta* along the Rouge which I believe to be of this species.
130. *Argynnis Dalphnis* (?), Cramer.—First seen, July 2nd, and last, September 12th. Abundant. I am of opinion that Boisduval was in error in considering *A. Aphrodite*, Fab. and *A. Cybele*, Fab., as the same species. There are at least three closely allied species of *Argynnis* inhabiting Canada, but nothing short of breeding each from the larva will satisfactorily separate them. My specimens are all too small for *A. Cybele*, Fab.
131. *Argynnis Myrina*, Cramer.—From June 5th till August 31st. Common.
132. " *Bellona*, Fab.—The only specimen met with, was captured in Arundel on the 30th June.
133. *Melitæa Tharos*, Cramer.—Sugar-bush Lake, June 29th; Bevan's Lake, July 2nd; Devil's River, July 14th.
134. *Thecla* (?)—I observed a large *Thecla* at Huckleberry Rapids, July 30th, but did not succeed in capturing it.
135. *Lycæna Americana*, Harris.—Numerous on grass land at Hamilton's Farm, from the 21st to the 31st August.
136. *Polyommatus pseudargiolus*, Boisd.—Numerous in Grenville and about Sixteen Island Lake in May. Worn specimens were seen about Bevan's Lake as late as the 2nd of July.

137. *Pamphila*.—One specimen of a species resembling *P. paniscus* of Europe was captured near Bevan's Lake, July 2nd. Specimens of a dingy grey species and of two or three other *Pamphilas* were taken in various localities in June, July and August. I cannot find descriptions of any of these and some of them are probably new.

*Heterocera.*

138. *Sphinx*.—Two species of *Sphinx* were captured in July, in Arundel and DeSalaberry, allied to *S. Kalmia*, A. & S. and *S. gordius*, Cramer, but not agreeing satisfactorily with Dr. Harris's descriptions of these species given in the Amer. Jour. Sci. Vol. 28.
139. *Smerinthus*.—Two larvæ belonging to this genus were obtained at Hamilton's Farm on the 3rd and 4th September, of which the following are descriptions.—No. 1. Pale green, whitish on the back, with oblique stripes of white and dark green on the sides.—No. 2. Green, with oblique tuberculated stripes on the sides and two tubercles on each of the second and third segments.
140. *Trochilium*.—On the 25th June, at Sugar-bush Lake, I captured a beautiful and apparently undescribed species of *Trochilium*, sitting on the blossoms of *Viburnum opulus* (high-bush cranberry). The anal tuft is deep orange; antennæ black; expansion of the wings 11 lines; length of the body 5 lines.
141. *Ctenucha Latreillana*, Kirby.—One specimen taken in Arundel, July 16th.
142. *Crocota brevicornis*, Walker.—Township of DeSalaberry; Hamilton's Farm, July and August.
143. *Medaria mendica*, Walker.—Near Bevan's Lake, July.
144. *Arctia Parthenos*, Harris.—I took a fine *Arctia* on the Devil's River, July 19th, agreeing in every respect with the description and figure of this species in Agassiz's "Lake Superior," with the exception that it has five, instead of three cream-coloured spots on the costal edge of the anterior wings.
145. *Hypercompa Lecontei*, Boisdu.—Montcalm, Arundel and DeSalaberry, during the month of July.
146. *Halesidota aunulifascia*, Walker.—Cocoons, apparently of this species, were found near Sixteen Island Lake, May 22nd.
147. *Orgyia leucostigma*, A. & S.—Hamilton's Farm, end of August and beginning of September.

anicus of Europe  
Lake, July 2nd.  
species and of two  
were taken in va-  
ly and August. I  
f any of these and  
new.

y, in Arundel and  
Kalmie, A. & S.  
ut not agreeing sa-  
is's descriptions of  
Amer. Jour. Sci.

obtained at Hamil-  
4th September, of  
descriptions.—No. 1.  
the back, with  
and dark green on  
with oblique tuber-  
s and two tubercles  
third segments.

captured a beauti-  
described species of  
blossoms of *Vibur-*  
cranberry). The  
; antennæ black ;  
lines ; length of the

Arundel, July 16th.  
berry ; Hamilton's

Devil's River, July  
respect with the  
is species in Agas-  
the exception that  
ee cream-coloured  
e of the anterior

DeSalaberry, dur-

y of this species,  
Island Lake, May

August and begin-

149. *Telea Polyphemus*, Hübner.—Throughout the whole district.
149. *Thyatira scripta*, Gosse.—Montcalm and Arundel, end of June and beginning of July.
150. " *cymolaphoroides*, Guén.—Montcalm and Arundel, June and July ; Trembling Lake, September 7th.
151. *Graphiphora C. nigrum*, Linn.—One specimen taken in DeSalaberry, July 24th, and another at Hamilton's Farm, August 28th.
152. " *Dahlia*, Hübner.—One specimen taken in Wentworth, May 17th.
153. *Euplexia lucipara*, Linn.—Common in Montcalm in June.
154. *Plusia mortuorum*.—Hamilton's Farm, end of August.
155. *Angerona crocataria*, Fab.—Common in Arundel and Montcalm in July.
156. *Sicya solfatarina*, Guén.—Not uncommon in DeSalaberry, end of July.
157. *Ellopia æqualiaria*.—Montcalm, June.
158. *Nematocampa filamentaria*, Guén.—DeSalaberry, July 22nd.
159. *Endropia tigrinaria*, Guén.—Very abundant in Montcalm at the end of June.
160. *Melanippe Gothicata*, Guén.—Extremely numerous in Montcalm during the month of June.
161. *Scotosia undulata*, Linn.—Common in Montcalm, end of June and beginning of July.
162. *Pyralis* n. sp?—DeSalaberry, June 27th. Mr. Walker supposes this to be a new species, and the following is a description of it.—Anterior wings, dull pink, crossed by two black transverse lines, the first of which, situated near the base, is straight and has a yellow spot on its inner side, occupying the angle which it forms with the costa ; the second, situated beyond the middle, is bent, forming an obtuse angle before it reaches the costal margin, where it has a yellow crescent-shaped spot on the outer side. Posterior wings, dusky-white at the base, with a broad, pale black, sub-marginal band and crossed by two black transverse lines. Expansion of the wings  $12\frac{1}{2}$  lines ; length of body 4 lines.
163. *Bleptina surrectalis*, Guén.—DeSalaberry, August 4th.
164. *Anania octomaculata*, Linn.—One specimen taken in Montcalm, July 2nd.
165. *Hydrocampa*.—A species of *Hydrocampa* was abundant near Hamilton's Farm, August 15th.
166. *Botys verticalis*, Linn.—DeSalaberry, not uncommon about the first of August.
167. *Eubulea*.—A small species apparently closely allied to the European *E. sambercalis*, Schiff., was very numerous on the blossoms of the raspberry (*Rubus strigosus*), near Bevan's Lake, at the beginning of July.

168. *Tortrix*.—Several pupæ of a *Tortrix*, which I collected on the Devil's River, produced the perfect insect, but I have been unable to determine either this or any other of my *Micro-Lepidoptera*.

## MOLLUSCA.

### CLASS GASTEROPODA.

#### ORDER PULMONIFERA.

1. *Tebennophorus Carolinensis*, Bosc.—Throughout the district.
2. *Succinea obliqua*, Say.—Occurred plentifully at Hamilton's Farm, and sparingly in wild parts of the district.
3. *Helix albolabris*, Say.—Wentworth; Montcalm; Harrington.
4. " *exoleta*, Binney.—Wentworth; DeSalaberry; Harrington.
5. " *monodon*, Rackett.—Arundel; Hamilton's Farm; near the Lake of Three Mountains.
6. " *concava*, Say.—Wentworth; Montcalm; Arundel. Abundant.
7. " *pulchella*, Müller.—Under stones at Carillon, but not elsewhere met with.
8. " *Sayii*, Binney.—Near Doran's Lake, Grenville.
9. " *labyrinthica*, Say.—Wentworth; Montcalm; Arundel. Common.
10. " *alternata*, Say.—Abundant throughout the district.
11. " *striatella*, Anthony.—Very abundant throughout the district.
12. " *arborea*, Say.—Plentiful throughout the district.
13. " *chersina*, Say.—" " " "
14. " *lineata*, Say.—Abundant throughout the district.
15. *Bulimus marginatus*, Say.—Sugar-bush Lake and near Gate Lake.
16. *Achatina lubrica*, Müll.—Bevan's and Gate Lakes. Common.
17. *Vertigo Gouldii*, Binney.—Sixteen Island Lake.
18. *Pupa* (undetermined).—With the last species.
19. *Carychium exiguum*, Say.—One specimen found near Sixteen Island Lake.

#### (Fresh Water.)

20. *Physa heterostropha*, Say.—Sugar-bush Lake, and near Grenville Village.
21. " *aurea*, Lea.—Small Lake near Hamilton's Farm.
22. *Physa elliptica*, Lea.—In a small lake one mile west of the Indian Village in Arundel.
23. " *elongata*, Say.—Near Grenville Village.
24. *Limnæa exigua*, Lea. (young).—In a small lake near Hamilton's Farm.
25. " *galbanus*, Say.—Abundant in shell marl from the bottom of Eagle Nest Lake.
26. " *plicata*, Lea.—Sugar-bush Lake. Abundant.
27. " *reflexa*, Say.—Near Grenville Village.
28. " *umbilicata*, Say.—With the last species.



- ected on the Devil's  
fect insect, but I  
rmine either this or  
pidoptera.
29. *Planorbis trivolvis*, Say.—In the small lake one mile west of the Indian Village in Arundel.
30. " *bicarinatus*, Say.—Eagle Nest Lake and a small lake near Hamilton's Farm.
31. " *campanulatus*, Say.—Near Grenville Village and in numerous lakes throughout the district.
32. " *parvus*, Say.—In shell marl in Eagle Nest Lake, and living in the lake one mile west of the Indian Village, Devil's Rapids, and in the lakes near Hamilton's Farm.
33. " *defectus*, Say.—Sixteen Island and Sugar-bush Lakes.

## ORDER PROSOBRANCHIATA.

- istrict.  
Hamilton's Farm, and  
of the district.  
gton.  
Harrington.  
m; near the Lake of  
del. Abundant.  
, but not elsewhere  
.  
Arundel. Common.  
istrict.  
out the district.  
ct.  
ict.  
Gate Lake.  
mmon.  
Sixteen Island Lake.  
Grenville Village.  
m.  
of the Indian Vil-  
Hamilton's Farm.  
from the bottom of
34. *Paludina decisa*, Say.—Very abundant the whole way up the Rouge and its tributary the Devil's River. Those collected are of a reddish-brown color, very unlike the light green of specimens from L'Orignal, opposite the mouth of the Rouge, and from the St. Lawrence near Montreal.
35. *Valvata tricarinata*, Say.—A few specimens found in shell marl from the bottom of Eagle Nest Lake.

## CLASS LAMELLIBRANCHIATA.

1. *Unio complanatus*, Lea.—This was the only species of *Unio* met with. It inhabits nearly every lake in the district, and was abundant in the Rouge as far as we ascended it. It was extraordinarily abundant in the shallow stream by which the waters of Bevan's and Bark Lakes are discharged into the Rouge; in fact they were crowded together as closely as they could lie, in the same manner as a bed of mussels on the sea shore.
2. *Margaritana rugosa*, Barnes.—One fine specimen obtained in the fourth small lake west of Balsam Lake, lot 11, range 3, Montcalm.
3. *Anodonta cygnea* (?), Linn.—This species was found in almost every lake we visited.
4. *Anodonta edentula*, Say.—One specimen obtained from the lake on lot 11, range 3, Montcalm.
5. " *fragilis*, Linn.—Sixteen Island, Eagle Nest, and Bevan's Lakes.
6. " *Footiana*, Lea.—With the last species.
7. *Cyclas similis*, Say.—Sixteen Island and Sugar-bush Lakes; lake one mile west of the Indian Village; in shell marl in Eagle Nest Lake.
8. " *partumcia* (?), Say.—Ponds near Eagle Nest Lake; Sugar-bush Lake; small lake near Hamilton's Farm.
9. " *dubia* (?), Say.—In shell marl, Eagle Nest Lake; living in the small lake near Hamilton's Farm.

*Catalogue of Animals and Plants collected and observed, on the south-east side of the St. Lawrence from Quebec to Gaspé, and in the Counties of Rimouski, Gaspé and Bonaventure. By Mr. Robert Bell, Jr., Assistant to Mr. James Richardson, Geological Explorer under Sir W. E. Logan, in 1858.*

VERTEBRATA.

CLASS MAMMALIA.

ORDER CHEIROPTERA.

1. *Vespertilio subulatus*, Say.—Restigouche, Matapedia and Patapedia Rivers.

ORDER INSECTIVORA.

2. *Sorex Forsteri*, Richardson.—Counties of Rimouski and Bonaventure.

ORDER CARNIVORA.

3. *Ursus Americanus*, Pallas.—Throughout the district.  
 4. *Mustela martes*, Linn.— “ “  
 5. “ *vison*, Gmel.— “ “  
 6. “ *vulgaris*, Linn.— “ “  
 7. “ *Canadensis*, Schreber.— “ “  
 8. *Mephitis Chinga*, Tiedemann.— “ “  
 9. *Lutra Canadensis*, Sabine.— “ “  
 10. *Canis fulvus*, Desm.— “ “  
 11. “ *lupus*, Linn.—Said to come no farther north than the St. John River.  
 12. *Lynx Canadensis*, Linn.—Gaspé, and probably throughout the whole district.

ORDER RODENTIA.

13. *Castor fiber*, Linn.—Throughout the district.  
 14. *Fiber zibethicus*, Cuv.— “ “  
 15. *Mus musculus*, Linn.—In settled parts throughout the district.  
 16. *Pteromys volucella*, Desm.—Gaspé.  
 17. *Tamias Lysteri*, Ray.—Rimouski and Gaspé.  
 18. *Sciurus Hudsonius*, Penn.—Throughout the district  
 19. *Hystrix dorsata*, Linn.— “ “  
 20. *Lepus Americanus*, Erxl.— “ “

ORDER RUMINANTIA.

21. *Cervus alces*, Linn.—Rimouski, Bonaventure and western part of Gaspé.  
 22. “ *tarandus*, Linn.—Among the Shickshock Mountains.

## CLASS AVES.

Determined by Mr. D'Urban.

## ORDER RAPTORES.

1. *Haliaetus leucocephalus*, Linn.—Along the St. Lawrence from Green Island to Martin River, in June and July; seen on the Restigouche in August.
2. *Astur fuscus*, Gmel.—Capucin, August 8th.
3. *Surnia funerea*, Gmel.—Green Island, middle of October.
4. *Syrnium nebulosum*, Gmel.—Marsouin River, end of July.

## ORDER INSSESORES.

5. *Chordeiles Virgintanus*, Briss.—Chat River, June 18th; Ste. Anne, June 28th to July 17th; at the mouth of the Matapedia, August 28th.
6. *Hirundo bicolor*, Vieill.—Chat River, June 18th; Ste. Anne, June 30th; Martin River, July 20th.
7. " *fulva*, Vieill.—Metis, beginning of June.
8. " *rustica*, Linn.—Trois Pistoles, May 30th; Metis, June 10th; Long Point, June 15th.
9. " *riparia*, Linn.—Ste. Anne, June 28th.
10. *Sylvicola coronata*, Lath.—Green Island Village, May 25th.
11. *Troglodytes hyemalis*, Vieill.—Patapedia River, September 5th.
12. *Parus atricapillus*, Linn.—First seen on the Patapedia River, September 5th, and afterwards in various localities.
13. *Regulus satrapa*, Lich.—Rivière du Loup, May 18th.
14. *Turdus migratorius*, Linn.—In settled parts, throughout the district.
15. *Anthus Ludovicianus*, Lich.—Rivière du Loup to Rimouski, from May 10th to June 5th.
16. *Alauda alpestris*, Linn.—Rimouski Village, beginning of October.
17. *Plectrophanes nivalis*, Linn.—Kamouraska, beginning of November.
18. *Emberiza socialis*, Wils.—Various localities from Rivière du Loup to Cape Chat.
19. *Niphaea hyemalis*, Linn.—Throughout the district.
20. *Carduelis tristis*, Linn.—Along the coast from St. Fabien to Martin River, from May 31st to July 19th; on the Restigouche, September 2nd.
21. *Fringilla Pennsylvanica*, Lath.—About clearings along the whole coast.
22. *Erythrospiza purpurea*, Gmel.—St. Fabien, May 30th; Ste. Anne, July 18th.
23. *Agelaius Phœniceus*, Linn.—Ste. Anne, July 17th.
24. *Quiscalus ferrugineus*, Lath.—Metis River, and between Metis and Rimouski, September and October.
25. *Corvus Americanus*, Aud.—Along the whole coast, and on the Restigouche, but not seen in inland parts.
26. *Garrulus cristatus*, Linn.—Lake Matapedia, August 19th.
27. " *Canadensis*, Linn.—Throughout the district.
28. *Bombycilla Carolinensis*, Briss.—Metis, June 8th; Ste. Anne, in July; Marsouin River, August 2nd.

observed, on the  
to Gaspé, and  
nture. By Mr.  
son, Geological

Patapedia Rivers.

Bonaventure.

the St. John River.  
out the whole dis-

istrict.

rn part of Gaspé.  
tains.

29. *Trochilus colubris*, Linn.—Metis, middle of August. 54.  
 30. *Sitta Canadensis*, Linn.—Matapedia Lakes, August 19th. 55.  
 31. *Alcedo alcyon*, Linn.—Throughout the district; observed from May 19th to the end of September.  
 32. *Picus pileatus*, Linn.—Green Island Seigniory.  
 33. “ *villosus*, Linn.—Bic, Ste. Anne, Marsouin and Martin Rivers.

## ORDER RASORES.

34. *Ectopistes migratoriu*, Linn.—From Metis to Ste. Anne; about Lake Matapedia, and along the Restigouche, from June 18th to August 31st.  
 35. *Tetrao umbellus*, Linn.—Near Rimouski. This species was not met with in Gaspé, and is believed by the Indians not to extend so far to the north-east.  
 36. “ *Canadensis*, Linn.—Throughout the district.

## ORDER GRALLATORES.

37. *Streptilas interpres*, Linn.—Green Island Village, October 26th.  
 38. *Tringa pusilla*, Wils.—Rivière du Loup and Green Island in May; Chat and Martin Rivers in July.  
 39. *Tringa* (undetermined).—Mouth of Marsouin, August 4th.  
 40. *Totanus solitarius*, Wils.—Matapedia and Restigouche Rivers in August.  
 41. “ *vociferus*, Wils.—Rivière du Loup, May 20th.  
 42. *Scolopax Novaboracensis*, Gmel.—Green Island, May 25th.  
 43. *Ardea nycticorax*, Linn.—Dalhousie, N. B., August 25th; Patapedia River, September 9th; Metis Lake, October 1st.

## ORDER NATORES.

44. *Anser Canadensis*, Linn.—Rimouski, beginning of June; Cape Chat, June 17th, and near Green Island and Caccouna in the end of October.  
 45. “ *leucopsis*, Bechst.—Rimouski and Green Island in October.  
 46. *Fuligula fusca*, Linn.—Coast of Rimouski and Gaspé in June and July.  
 47. “ *perspicillata*, Linn.—Green Island and various localities further down.  
 48. “ *clangula*, Linn.—Bic and Green Island in October, and Metis Lakes, September 18th.  
 49. “ *histrionica*, Linn.—Ste. Anne River in July; Restigouche in August, and Patapedia in the beginning of September.  
 50. *Mergus serrator*, Linn.—Along the whole coast and on every river visited; first seen at Ste. Anne, June 30th.  
 51. *Phalacrocorax carbo*, Linn.—Between Bic and Green Island, middle of October.  
 52. *Larus atricilla*, Linn.—Whole coast.  
 53. *Uria Grylle*, Linn.—Hare Island; Green Island; Ste. Anne and near Martin River.

54. *Colymbus glacialis*, Linn.—Metis Lakes ; Marsouin River and Rimouski.  
 55. “ *septentrionalis*, Linn.—Skins of this bird were procured by Mr. Richardson in Anticosti.

## CLASS REPTILIA.

1. *Tropidonotus sirtalis*, Linn.—Throughout the district.  
 2. *Rana pipiens*, Gmel.— “ “  
 3. *Salamandra erythronota*, Green.— “ “  
 4. *Bufo Americana*, Leconte.— “ “

## CLASS PISCES.

## ORDER ACANTHOPTERI.

1. *Gasterosteus* (not determined).—Metis River, above the high falls.  
 2. “ *pungitius*, Linn.—In numerous localities along the coast, from Rivière du Loup downwards.  
 3. “ *biaculeatus*, Mitch.—With the preceding species, but more abundant. Found also in Lake Matapédia.  
 4. *Cottus Virginianus*, Willughby.—Coast of Gaspé and Rimouski.  
 5. “ *gracilis*? Heck.—Restigouche River and Metis Lakes.  
 6. *Scomber vernalis*, DeKay.—Ascends the St. Lawrence to Rimouski.

## ORDER MALACOPTERI.

7. *Salmo salar*, Linn.—Ascends all the rivers in the peninsula which are free from mill-dams.  
 8. “ *fontinalis*, Mitch.—In every stream and lake throughout the district.  
 9. “ *trutta*, Linn.—Abundant for a short distance up the clear streams of Gaspé.  
 10. *Osmerus viridescens*, Lesueur.—Whole coast below Green Island.  
 11. *Alosa præstabilis*, DeKay.—Coast of Rimouski, middle of May.  
 12. “ *tyrannus*, DeKay.—Rimouski Village.  
 13. *Clupea virescens* (?), DeKay.—Whole coast as far up as the salt water extends.  
 14. “ *elongata*, Lesueur.—Whole coast also.  
 15. *Mallotus villosus*, Cuvier.—With the last two species ; extremely abundant.

## ORDER ANACANTHINI.

16. *Ammodytes Americanus*, DeKay.—Coast of Gaspé.  
 17. *Morrhua Americana*, Storer.—Ascends the river as far as Trois Pisloles.  
 18. “ *æglefinus*, Cuvier.—Taken with cod on the Gaspé coast.  
 19. “ *pruinosa*, DeKay.—Caught at the mouths of various rivers from the Chat upwards.  
 20. *Motella cimbria* (?), Parnell.—Ste. Anne.  
 21. *Zoarcus viviparus*, Cuvier.—Off the mouth of Marsouin River.  
 22. *Hippoglossus vulgaris*, Cuvier.—Ascends the river to Green Island.  
 23. *Platessa vulgaris*, Flem.—Several of the fishing stations on the Gaspé coast.  
 24. *Cyclopterus lumpus*,—Linn.—Ste. Anne ; Green Island.

## ORDER PLAGIOSTOMI.

25. *Spinax acanthias*, Cuvier.—Les Islets.  
 26. *Raia radiata*, Don.—Ste. Anne.

## MISCELLANEOUS.

27. *Coregonus*.—Herring Trout, probably *C. clupeiformis*, are abundant in the Metis Lakes and River.  
 28. *Cyprinus*.—Lake Matapedia and the Restigouche River.  
 29. *Catostomus*.—Black Suckers occur in the Restigouche and the larger lakes of the district.  
 30. *Anguilla*.—Probably *A. acutirostris*, about the mouths of the rivers all along the coast.  
 31. *Salmo*.—An important species of *Salmo*, known as "Toag," abounds in the lakes of Rimouski County, but as no specimens were preserved nothing certain can be said about it.

## ARTICULATA.

## CLASS INSECTA.

## ORDER COLEOPTERA.

*Determined by Dr. J. L. Leconte of Philadelphia.*

1. *Cicindela longilabris*, Say.—Green Island Seigniory; between Metis and Lake Matapedia; Ste. Anne.  
 2. " *vulgaris*, Say.—Ste. Anne; Ruisseau de la Grande Vallée; between Metis and the mouth of the Matapedia.  
 3. " *duodecimguttata*, Dej.—Metis River; between Metis and the Matapedia; Ste. Anne.  
 4. " *Baltimorensis*, Herbst. (*repanda*, Say.)—Rimouski; Metis River; Capucin.  
 5. *Brachinus*, (not determined).—Abundant on Metis River.  
 6. *Cymindis reflexa*, Lec. (*marginata*, Kirby).—Rivière du Loup; Rimouski; Metis; Matanne.  
 7. *Calathus gregarius*, Say.—St. Simon; from the mouth of the Marsouin to the Shickshock Mountains, fourteen miles up that river; Mount Commis on the Metis River.  
 8. *Platynus sinuatus*, Dej.—Point Levi; St. Simon; Marsouin River.  
 9. " *extensicollis*, Say.—Metis River.  
 10. " *melanarius*, Dej.—Point Levi, opposite Quebec.  
 11. " *tenuis*, Say.—Berthier and Ste. Anne.  
 12. " *cupripenne*, Say.—Point Levi, St. Simon and Ste. Anne.  
 13. " *retractus*, Lec.—Berthier, Rivière du Loup, and Ste. Anne.  
 14. " *picipennis*, Kirby, (*lenum*, Lec.)—Berthier, Marsouin River, and between Metis and the Matapedia.

15. *Platynus lutulentus*, Lec.—Point Levi.
16. " *placidus*, Say.—Berthier, Matanne, and Ruisseau de la Grande Vallée.
17. *Pæcilus lucublandus*, Say.—Very abundant at Point Levi, Berthier, Rivière du Loup, Green Island Village, St. Simon and Metis.
18. *Pterostichus erythropus*, Dej.—Point Levi.
19. " *patruelis*, Dej.—Green Island Seignory.
20. " *mandibularis*, Kirby.—Between the mouth of the Marsouin and the Shickshock Mountains.
21. " *caudicalis*, Say.—Berthier and Green Island Seignory.
22. " *corvinus*, Lec.—Point Levi.
23. " *orinomum*, Leach. (*vitreus*, Esch.)—Abundant from Rivière du Loup to Ste. Anne; Mount Commis near the Metis.
24. " *Luczotii*, Dej. (var. præc?)—Metis and Ste. Anne.
25. " *adjunctus*, Lec.—Rivière du Loup to Ste. Anne.
26. *Amara libera*, Lec.—Rivière du Loup.
27. " *pullipes*, Kirby, (*depressa*, Lec.)—Rimouski.
28. " *impuncticollis*, Say.—Berthier and Ste. Anne.
29. " *fallax*, Lec.—Green Island Seignory and Matanne.
30. " *interstitialis*, Dej.—Rimouski and Matanne.
31. *Anisodactylus Harrisii*, Lec. (*agricola*, vide Harris.)—Point Levi and Berthier.
32. *Harpalus viridianeus*, Beauv.—Very abundant at Green Island Seignory, between Metis Lake and the Matapedia, Matanne, and Ste. Anne.
33. " *pleuriticus*, Kirby.—Abundant from Berthier to Rimouski.
34. " *megacephalus*, Lec.—Rivière du Loup.
35. " *rufimanus*, Lec.—Ste. Anne.
36. *Chlænus sericeus*, Say.—Point Levi, Berthier, and St. Simon.
37. " *chlorophanus*, Dej.—Metis River.
38. " *tricolor*, Dej.—Berthier.
39. *Cychnus (Sphaeroderus) Brevoortii*, Lec.—Rivière du Loup, St. Simon, Mount Commis twenty miles up Metis River, Ste. Anne and Marsouin River.
40. *Carabus serratus*, Say.—Rivière du Loup to Matanne, and between Metis and the Matapedia River.
41. " *Lapilayi*, Lec.—Rivière du Loup and Green Island Seignory.
42. *Calosoma calidum*, Fabr.—L'Islet, Rimouski, Metis, Matanne, and Ste. Anne.
43. *Elaphrus Californicus*, Mann. var. *punctatissimus*, Lec.—St. Simon.
44. *Patrobus longicornis*, Say.—Berthier, Metis, and mouth of the Matapedia.
45. " *angicollis*, Randall.—Metis River.
46. *Bembidium dilatatum*, Lec.—Metis River.
47. " *lucidum*, Lec.—Point Levi.
48. *Dytiscus confluens*, Say. (*O. Oligbukii*, Kirby.)—Mouth of Metis River.
49. *Agabus striatus* (?), Say.—Rivière du Loup, Green Island Seignory, and Ste. Anne.
50. *Necrophorus velutinus*, Fabr.—Metis River.

51. *Silpha lapponica*, Herbst.—Very abundant at Ste. Anne.  
 52. *Staphylinus villosus*, Grav.—Rimouski, Metis, Matanne, and Ste. Anne.  
 53. *Omosita colon*, Fab.—In vast numbers in fields manured with capeling.  
 54. *Pediacus planus*, Lec.—Between Metis and Matapedia.  
 55. *Byrrhus picipes*, Kirby.—Ste. Anne.  
 56. *Platycerus depressus*, Lec.—Ste. Anne.  
 57. *Aphodius fessor*, ("absolutely the same as the European," Leconte, in lit.)—  
 Rivière du Loup and Ste. Anne.  
 58. " *simetarius*, Fabr.—Abundant from Metis to the Matapedia.  
 59. " n. sp. (?)—Metis.  
 60. *Lachnosclerna fusca*, Frohlich.—Point Levi and Rivière du Loup.  
 61. *Dichelonycha subvittata*, Lec.—Ste. Anne.  
 62. *Ancylochira maculiventris*, Say.—Metis River, and between Metis and the  
 Matapedia.  
 63. *Ellychnia corrusca*, Dej.—Capucin, Ste. Anne, and Ruisseau de la Grande  
 Vallée.  
 64. *Meloe rugipennis*, Lec.—Between Metis and the mouth of the Matapedia.  
 65. *Serropalpus substriatus*, Hd.—Metis River.  
 66. *Upis reticulata*, Say.—Metis.  
 67. *Tomicus* (not named).—Between Metis and the Matapedia.  
 68. *Physocnemum ligneum*, Fabr.—Green Island Seigniorly.  
 69. *Monohammus confusor*, Kirby.—Metis.  
 70. " *scutellatus*, Say.—Metis and Ste. Anne.  
 71. *Chrysomela scalaris*, Lec.—Metis.  
 72. *Galleruca* (not named).—Between Metis and the Matapedia.  
 73. *Coccinella novemnotata*, Fabr.—Rimouski and Metis.

## ORDER LEPIDOPTERA.

Determined by Mr. D'Urban.

## (a) Rhopalocera.

74. *Papilio turnus*, Linn.—From Cape Chat to Martin River, from June 18th  
 till the end of July. Extremely abundant.  
 75. *Colias philodice*, Godart.—Cape Chat and Ste. Anne, from the middle of  
 June till the middle of July; between Metis  
 and Lake Matapedia, August 17th; along  
 the Restigouche during the latter half of  
 August; last seen September 1st.  
 76. *Pieris oleracea*, Harris.—St. Simon, May 28th; Ste. Anne, from June 20th  
 to the middle of July. Common.  
 77. *Limenitis Arthemis*, Drury.—Ste. Anne, July 16th; Marsouin River, July 26th.  
 78. *Cynthia cardui*, Linn.—Seigniorly of Grand Metis, August 16th; Dalhousie  
 N. B., August 25th.  
 79. *Vanessa J. album*, Boisd.—Junction of the Patapedia and Awaganasees, Sep-  
 tember 12th.  
 80. " *Antiopa*, Linn.—Metis and near Rimouski, September 29th.



81. *Grapta Progne*, Fab.—From Rivière du Loup to Ste. Anne, from May 18th till July 19th; Lake Matapedia, August 17th; along the Restigouche and Patapedia Rivers till September 12th.
82. *Grapta C. aureum*, Cramer (?)—Mouth of Awaganasees Brook, September 12th.
83. *Argynnis Aphrodite*, Fab.—First observed at Ste. Anne on the 20th of June and very abundant there for the next month; Marsouin River, July 26th; between Metis and Lake Matapedia and along the Restigouche in August, and last seen at the mouth of the Awaganasees, September 12th.
84. " *myrina*, Cramer.—Ste. Anne, end of June and beginning of July; between Metis and Lake Matapedia, August 16th.
85. " *Bellona*, Godart.—Mouth of Matapedia River, August 27th.
86. *Melitæa Tharos*, Cramer.—Ste. Anne, beginning of July.
87. *Polyommatus pseudargiolus*, Boisid.—Rivière du Loup, May 19th, and thence as far down as Chat River, till June 18th.
88. *Hesperia* ——— (?) —Metis, August 13th; Lake Matapedia, August 17th.

## (b) Heterocera.

89. *Orgyia* ——— (?) —Matapedia River, August 20th.
90. *Ctenucha Latreillana*, Kirby.—Ste. Anne, June 28th. Abundant.
91. *Phragmatobia fuliginosa*, Linn.—Matanhe, June 12th.
92. *Mamestra* ——— (?) —Ste. Anne.
93. *Plusia* ——— (?) —Common in Gaspé and on the Restigouche.
94. *Pyralis* ——— (?) —Mouth of the Matapedia River.
95. *Crambus* ——— (?) —Very abundant in meadows at Ste. Anne, and at the mouth of the Matapedia.

Five undetermined species of Geometric Moths.

## CLASS CRUSTACEA.

## ORDER DECAPODA.

1. *Cancer irroratus*, Say.—Whole coast below Green Island.
2. *Hyas fessirostra*, Say sp.—With the preceding species.
3. *Pagurus Bernhardus*, Fabr.—Coast of Gaspé and Rimouski.
4. *Homerus Americanus*, Milne-Edw.—Rare on the coast of Rimouski and on the north coast of Gaspé, but abundant in Gaspé Bay, on Anticosti and in the Bay of Chaleur.
5. *Astacus Bartonii*, Bosc.—Metis, Matapedia and Restigouche Rivers.
6. *Crangon vulgaris*, Fabr.—Coast of Gaspé and Rimouski.
7. " *sculptus* (?), Bell.—Off Cape Chat.
8. *Hippolyte* (not determined)—Near Metis.
9. *Orchestia* (not determined)—Whole coast.

## CLASS ANNULATA.

## ORDER TUBICOLÆ.

*Determined by Dr. J. W. Dawson.*

1. *Spirorbis porrecta*,—North coast of Gaspé. 14.
2. " *sinistrosa*,— " " 15.
3. " *carinata*,— " " 16.
4. " *vitrea*,— " " 17.
5. " *cancellata*,— " " 18.
6. " *spirillum*.—On littoral *Algae*, whole coast below Rivière du Loup. 19.
7. *Serpula (vermilia) serrula*, Stimpson.—North coast of Gaspé. 20.

## MOLLUSCA.

## CLASS GASTEROPODA.

## ORDER PULMONIFERA.

(*Terrestrial.*)

1. *Helix alternata*, Say.—Common from Quebec along the whole coast into Gaspé; it appears to be diffused over the whole peninsula. 21.
2. " *albolabris*, Say.—From Quebec to Metis; Lake Matapedia; along the Restigouche River from Dalhousie to the mouth of the Patapedia. I never met with this species in the County of Gaspé. 22.
3. " *monodon*, Rackett.—Point Levi; along the banks of the Restigouche from Dalhousie to the mouth of the Patapedia. 23.
4. " *Sayii*, Binney.—Restigouche River, about five miles above the mouth of the Matapedia. 24.
5. " *concava*, Say.—Point Levi; abundant. 25.
6. " *hortensis*, Müll.—From all that I could ascertain regarding this species, it appears to have diffused itself over a strip of country several miles in width, bordering on the St. Lawrence and extending from Metis to Gaspé Bay. 26.
7. " *arborea*, Say.—Throughout the whole district; very abundant. Occurs on the Island of Anticosti. 27.
8. " *striatella*, Anthony.—With the last species and equally abundant. 28.
9. " *lineata*, Say.—Numerous localities on the coast, from Berthier to Marsouin River. 29.
10. " *labyrinthica*, Say.—Rivière du Loup and Green Island. 30.
11. *Helix pulchella*, Müll.—Berthier, mouth of Magdalen River and Dalhousie, N. B. 31.
12. " *asteriscus*, Morse.—Valley of the Marsouin River. 32.
13. " *chersina*, Say.—Trois Pistoles; Capucin; Ste. Anne; along the vallies of the Marsouin, Magdalen and Mata- 33.

pedia Rivers, and at the mouth of the Patapedia.

14. *Helix* (undetermined).—A young shell of one of the larger species, but differing from any of the preceding; Rivière du Loup.
15. *Succinea avara*, Say.—Matanne; mouth of Magdalen River; several localities on the Restigouche.
16. " *ovalis*, Gould.—Metis, Matanne and Ste. Anne.
17. " *obliqua*, Say.—Throughout the district.
18. *Achatina lubrica*, Müll.—Rivière du Loup; Trois Pistoles; Metis Lakes and along the Restigouche.
19. *Bulinus harpa*, Say sp.—Metis; mouth of Magdalen River, and very abundant in the Marsouin Valley.
20. *Vitrina pellucida*, Drap.—Rivière du Loup; Trois Pistoles; Ste. Anne; Restigouche River ten miles above its junction with the Matapedia.
21. *Pupa (Verligo) simplex*, Gould.—Valley of the Marsouin; along the Restigouche and at Metis.

(Fresh Water.)

22. *Physa heterostropha*, Say.—Throughout the district; very abundant.
23. " *aurea*, Lea.—Several localities in the County of Rimouski.
24. " *elongata*, Say.—Green Island Village; Metis; Ste. Anne.
25. " *ancillaria*, Say.—Rimouski Village.
26. " *marginata*, Say.—Near Rimouski Village.
27. *Limnaea stagnalis*, Lam.—Extremely abundant in the Metis Lakes, and in the lakes on the Rimouski River.
28. " *caperata*, Say.—Lakes Metis and Matapedia, and the Metis and Restigouche Rivers. Abundant.
29. " *umbrosa*, Say.—Ste. Anne; a creek about two miles below Chat River; Metis and Restigouche Rivers.
30. " *caticopium*, Say.—Rimouski, Restigouche, and Dartmouth rivers.
31. " *apacina*, Lea.—Living in the St. Lawrence at Point Levi; in the Metis, Rimouski and White Rivers.
32. " *acuta*, Lea.—Upper Lake Metis; abundant in Marl Lake, Anticosti.
33. " *umbilicata*, Say.—Metis and Ste. Anne.
34. " *reflexa*, Say.—Upper Metis Lake.
35. " *pallida*, Adams.—Large Lake Matapedia; near Cape Chat.
36. " *modicella*, Say.—Green Island Village; Rimouski; Ste. Anne.
37. " *parva*, Lea.—Rivière du Loup.
38. " *decollata*, Say.—Large Lake Matapedia; Rimouski Village.
39. " *alternata*, or new.—Point Levi.
40. *Planorbis trivolvis*, Say.—Rimouski, Metis and Restigouche Rivers.
41. " *campanulatus*, Say.—Lakes Metis and Matapedia.
42. " *bicarinatus*, Say.—Restigouche River.
43. " *parvus*, Say.—Throughout the district.
44. " *deflectus*, Say.—Large Lake Matapedia.

## ORDER PROSOBRANCHIATA.

*(Fresh Water.)*

45. *Amnicola porata*, Say.—Little Lake Matapedia.  
 46. *Vulvata tricarinata*, Say.—Matapedia Lakes.  
 47. " *humeralis*, Say (or a new species).—Matanne; small lake at the head of Awaganasees Brook; Little Lake Matapedia.  
 48. " *sincera*, Say.—Marl Lake, Anticosti. Abundant.

NOTE.—Many of the above species of land and fresh water Gasteropoda were kindly determined for me by W. G. Binney Esq., of Burlington N. J. and Dr. Isaac Lea, of Philadelphia.

*(Marine.)*

49. *Fusus scalariformis*, Gould.—Peter River; Ste. Anne; Marsouin.  
 50. " *gracilis* Alder.—Trent; Ste. Anne; Marsouin.  
 51. " *tornatus*, Gould.—Rimouski Village; near Ste. Anne.  
 52. " *decemcostatus*, Say.—Near Cape Gaspé (collected by Sir W. E. Logan in 1844.)  
 53. " *rufus*, Gould.—Ruisseau de la Grande Vallée.  
 54. " *Bamffius*, Flem.— " "  
 55. *Bela cancellata*, M. & A.— " "  
 56. *Pleuratoma bicarinata* (?), Couth.— "  
 57. *Buccinum undatum*, Linn.—Whole coast below Rivière du Loup.  
 58. " *Donovani*, Gray.—Several localities below St. Flavie.  
 59. *Nassa trivittata*, Say.—Gaspé Bay and Bay of Chaleur.  
 60. " *obsoleta*, Say.—Vicinity of Cape Gaspé.  
 61. *Purpura lapillus*.—Lam.—Whole coast below Metis.  
 62. *Trichatropis borealis*, Sowerby.—Ste. Anne and near Cape Chat.  
 63. *Velutina haliotoides*, Müll.—Ste. Anne and Marsouin.  
 64. *Lamellaria perspicua*, Lovén.—Ruisseau Vallée.  
 65. *Natica heros*, Say, *ampullaria*, Lam.—In sandy bays on the Gaspé coast; at Dalhousie, Bay of Chaleur.  
 66. " *clausa*, Brod. & Sow.—Several localities between Bic and Marsouin  
 67. " *triseriata*, Say.—Magdalen Bay.  
 68. " *flava* ? Gould.—Rimouski; Les Islets; Claude.  
 69. " *helicoïdes*, Johnston.—Marsouin.  
 70. *Chemnitzia*.—One or more species of *Chemnitzia* dredged off Marsouin.  
 71. *Apochais occidentalis*, Gould.—Bic; Ste. Anne; Claude; Marsouin.  
 72. *Rissoa minuta*, St.—Green Island and Long Point.  
 73. *Lacuna vineta*, Turt.—Whole coast below Rimouski.  
 74. *Littorina littoralis*, F. & H., *palliat*a, Gould.—Whole coast below Rivière Ouelle.  
 75. *Littorina rudis*, Gould, (including *tenebrosa*).—With the preceding species.  
 76. *Margarita cinerea*, Gould.—Ste. Anne; Ruisseau Vallée; Peter River and Marsouin.  
 77. " *undulata*, Sow.—Ste. Anne; Ruisseau Vallée.  
 78. " *helicina*, Müll.—Trent; Les Islets; Ste. Anne.

79. *Skenea costulata*, F. & H.—Marsouin.  
 80. *Diadora Noachina*, Gray.—Capucin; Ste. Anne; Marsouin.  
 81. *Crepidula fornicata*, Lam.—Dalhousie, Bay of Chaleur.  
 82. *Acmaea testudinalis*, Hanley.—Whole coast below Rivière du Loup, also in Bay of Chaleur.  
 83. " *cæca*.—Marsouin.  
 84. *Chiton marmoreus*, Fabr.—Bic, and whole coast of Gaspé

## CLASS LAMELLIBRANCHIATA.

*(Marine.)*

1. *Pholas crispata*, Linn.—Bic; Rimouski; near the Trent.  
 2. *Saxicava rugosa*, Lam.—Les Islets; Ste. Anne; Cape Chat; Marsouin Claude.  
 3. *Mya arenaria*, Linn.—Whole coast below Rivière Ouelle, and in Bay of Chaleur.  
 4. " *truncata*, Linn.—Numerous localities on the coast of Rimouski and Gaspé.  
 5. *Glycymeris siliqua*, Lam.—Cape Chat; Ruisseau Vallée; and Marsouin.  
 6. *Osteodesma hyalina*, Couth.—Ste. Anne.  
 7. *Machara costata*, Gould.—Rimouski.  
 8. *Solen ensis*, Linn.—Bic; Rimouski, and numerous localities on the coast of Gaspé.  
 9. *Tellina proxima*, Brown.—Ste. Anne; Ruisseau Vallée; Marsouin.  
 10. " *Grænlandica*, Beck.—Whole coast below Bay St. Paul (fifty-five miles below Quebec), and in the Bay of Chaleur.  
 11. *Maetra ovalis*, Gould.—Bic; Rimouski; Metis, and in sandy bays everywhere on the Gaspé coast.  
 12. *Mesodesma arctatum*, Gould.—Whole coast below Green Island. Extremely abundant.  
 13. *Venus gemma*, Tott.—Green Island.  
 14. *Aphrodite Grænlandica*, St.—Bic; Rimouski; Metis; Ste. Anne; Ruisseau Vallée.  
 15. *Cardium Islandicum*, Linn.—Bic; Rimouski; Metis; Ste. Anne.  
 16. *Cardita borealis*, Con.—Marsouin; Capucin; Ste. Anne; Ruisseau Vallée.  
 17. *Astarte sulcata*, Costa.—Bic, and various localities on the Gaspé coast.  
 18. " *elliptica*, Brown.—Marsouin.  
 19. " *compressa*, Mont.—Marsouin.  
 20. *Lucina flexuosa*, Gould.—Ste. Anne; Ruisseau Vallée and Marsouin.  
 21. *Lima subauriculata*, Mont.—Ste. Anne.  
 22. *Mytilus edulis*, Linn.—Whole coast below Kamouraska.  
 23. *Modiola discors*, Linn.—Ste. Anne; Marsouin.  
 24. " *plicatula*, Lam.—Vicinity of Gaspé Bay.  
 25. " *glanlula*, Tott.—Ste. Anne; Ruisseau Vallée; Marsouin.  
 26. " *pectinula*, Gould.—Ruisseau Vallée; Marsouin.  
 27. " *nexa*, Gould.—Ruisseau Vallée.

28. *Nucula myalis*, Couth.—Numerous localities on the Gaspé coast.  
 29. " *tenuis*, Turt.—Capucin ; Ste. Anne ; Ruisseau Vallée.  
 30. *Pecten Magellanicus*, Lam.—Ste. Anne ; Claude and Gaspé Bay.  
 31. " *Islandicus*, Müll.—Whole coast below Metis.  
 32. *Anomia ephippium*, Linn.—Ste. Anne ; Marsouin.

## (Fresh Water.)

33. *Unio complanatus*, Lea.—Living in the St. Lawrence as far down as Berthier. Valves both of this species and of *U. radiatus* were frequently found on the beach the whole way to Gaspé. They had probably drifted from the fresh water of the St. Lawrence, as no species of *Unio* was found in any of the rivers or lakes of our present district.  
 34. *Margaritana arcuata*, Barnes sp.—Green and Rimouski Rivers, and both the Matapedia Lakes.  
 35. *Anodonta subcylindracea*, Lea.—Grand Lac (ten miles south of Rimouski Village) ; Lake Matapedia ; small lake six miles S. W. of Metis.  
 36. " new species.—Berthier.  
 37. " *edentula*, Say.—Lake Matapedia.  
 38. " *fragilis*, Lam.—Metis Lakes.  
 39. " *implicata*, Say.—Berthier.  
 40. *Cyclas similis*, Say.—Metis Lakes and a small lake six miles S. W. of Metis.  
 41. " *dubia* (?), Say.—Throughout the district.  
 42. " (undetermined).—Ste. Anne.

## CLASS BRACHIOPODA.

1. *Hypothyris psittacea*, King.—Ste. Anne ; Ruisseau Vallée ; Marsouin. Abundant.

## CLASS POLYZOA.

## ORDER CHEILOSTOMATA.

The Polyzoa dredged at Marsouin on the north coast of Gaspé, were kindly determined by Dr. J. W. Dawson, Principal of McGill College. The following is his communication in full.

The Polyzoa in Mr. Bell's Collections are numerous and fine, but much time and care would be required for their accurate determination. The appearances presented in various stages of growth and preservation, are so perplexing, and the characters given for the species of authors, of so little value, that little can be done with a collection of dead cells, except to indicate the described species with which they seem to be identical. The following species were all attached to dead shells and stones, from a depth of about thirty fathoms.

1. *Hippothoa catenularia*, Jameson.  
 2. " *divericata*, Elliot.

3. *Hippothoa expansa*. New species. Description. Cells oval, depressed, and expanded at the sides, not contracted at the base, branching dichotomously. When magnified the surface presents indistinct transverse wrinkles and delicate longitudinal lines. Aperture, small, round, with a slight sinus. Texture hyaline, but less delicate than *H. divaricata*.
- All the three species above mentioned are found associated on small pebbles and shells.
4. *Lepralia pertusa*, Thompson.—Very abundant.
5. " *Peachii*, Johnston.—Very abundant also.
6. " *trispinosa*, Johnston.—Abundant.
7. " *hyalina?*\*, Johnston.—Rare.
8. " *punctata*, Hassal.—Rare.
9. " *puncturata*, Busk.—A little group of three cells on a shell of *Maetra ovalis* have the precise characters of this species, obtained by Busk from the English Crag. It appears still to live, though as a rare species, in the Gulf of St. Lawrence.
10. " *Belli*. New species. Description. In large patches. Young cells granular, semi-hyaline, confluent; mouth immersed, sinuated, with a vibraculum or avicularium inside the middle of the lower lip; ovi-cells rounded, granulous like the cells. Old cells white, opaque, flat above, and separated by a deep sinuous furrow. Cells having a strong tendency to form rows radiating from the centre of the patch. I can find no described species possessing the above characters. It is allied to *L. concinna*, Busk, but differs in essential points from his description and figure.
11. " *plana*. New species. Description. Cells flat, confluent, shallow; walls deeply and irregularly furrowed; mouth rounded above, straight below, often with a narrow sinus in the middle. Young cells hyaline; old cells, opaque and deeply furrowed in a stellate manner. Forms very thin and flat expanding crusts. *L. adpressa*, Busk, from Chilkø, resembles it more nearly than any other species known to me.
12. *Membranipora Lacroixi*, Busk, or a nearly allied species.
13. " *lineata*\*, Busk, *Flustra lineata*, Fabricius, "Fauna Groenlandica."

\* The species marked thus were found by Fabricius in Greenland.

14. *Cellepora pumicosa* \*, Ellis.—On Sertularia.  
 15. " *cervicornis*, Borlase.  
 16. " *ramulosa*, Linn.,—or allied species.  
 17. *Curbasea papyrea*, Gray.—The frond is narrower than in British examples, but the cells are of the same form.  
 18. *Diastopora obelia*, Fleming, or closely allied species.  
 19. *Tubulipora flabellaris*,\* Fabricius.  
 20. " *hispidula*,\* Johnson.—It is the *Mulrepora verrucaria* of Fabricius.  
 21. " *phalangea*?\* Couch—Of the form of *T. flabellaris*, but dotted with pores and having larger tubes, which are grouped in bundles. Perhaps it is *T. densa*, Stimpson. Its colour is often light blue. Fabricius seems to have seen it and placed it with *T. flabellaris*.  
 22. *Cellularia* (species undetermined.)  
 Many more species were dredged but have not yet been determined.

## RADIATA.

## CLASS ECHINODERMATA.

## ORDER ASTEROIDEA.

1. *Ophiocoma bellos*, Link.—Ste. Anne and Marsouin; abundant.  
 2. " *Gordsiri*? Forbes.—Marsouin.  
 3. *Astrophyton scutatatum*, Link.—Green Island; Gaspé Bay; St. Nicolas (north shore). Said to be common on the coast of Rimouski.  
 4. *Cribella oculata* (?) Pennant.—Near Ste. Anne.  
 5. *Solaster papposa*, Linn.—Marsouin.  
 6. *Asteracanthion polaris*, Müll.—Very abundant along the whole coast below Rimouski.  
 7. " *rubens*, Linn.—Les Islets.

## ORDER ECHINOIDEA.

8. *Echinacanthus Atlanticus*.—On muddy and sandy bottoms, along the whole coast below Rimouski.  
 9. *Echinus granularis*, Lam.—Whole coast below Rivière du Loup.

## ORDER HOLOTHURIDEA.

10. *Cucumaria communis*, Forbes.—Between Cape Chat and Ste. Anne; abdt.  
 11. *Psolus phantapus*, Linn.—Various localities between Metis and Ste. Anne.

## CLASS ACALEPHÆ.

## ORDER HYDROIDEA.

1. *Sertularia polyzonina* \*, Johnston.—Dredged off Marsouin.  
 2. " *argentea* \*, Ellis.— " "  
 3. " *filicula*, Ellis.— " "  
 4. " *latiuscula*?, Stimpson, or a closely allied species.

None of the above have ovicapsules.

Six or more different Sponges, some of them beautiful forms, were collected.

\* Found by Fabricius in Greenland

I am indebted to the following of Lower Canada, who were kindly of Company.

- Ranunculac*  
 1. Anemone P  
 2. Thalletrum  
 3. Ranunculus  
 4. "  
 5. "  
 6. Caltha palus  
 7. Aquilegia C  
*Nymphæacca*  
 8. Nuphar adve

- Sarraceniace*  
 9. Sarracenia p  
*Fumariaceæ.*  
 10. Corydalis au  
*Crucifera.*  
 11. Sinapis arven  
*Violaceæ.*  
 12. Viola cuculla  
*Cistaceæ.*  
 13. Hudsonia tom  
*Parnassiaceæ*  
 14. Parnassia Ca  
*Caryophyllac*  
 15. Silene inflata  
 16. Moehringia la  
 17. Spergulara arve  
*Oxulidaceæ.*  
 18. Oxalis acetos  
 19. " stricta  
*Anacardiaceæ*  
 20. Rhus Toxicod  
*Sapindaceæ.*  
 21. Acer spicatur  
 22. " sacchar



## PLANTS.

I am indebted to Mr. D'Urban, late of the Geological Survey, for preparing the following catalogue of Plants collected by me in the eastern peninsula of Lower Canada. Numerous species, about which Mr. D'Urban was in doubt, were kindly determined by George Barnston Esq., of the Hudson's Bay Company.

*Ranunculaceæ.*

1. *Anemone Pennsylvanica*, Linn.—F. F.\*, August 12th, Metis.
2. *Thalictrum cornuti*, Linn.—F. F., July 16th, Ste. Anne.
3. *Ranunculus repens*, Linn. " " "
4. " *acris*, Linn. " " "
5. " (undetermined).—No flower, September 1st, River Restigouche.
6. *Caltha palustris*, Linn.—F. F., June 5th Rimoukt.
7. *Aquilegia Canadensis*, Linn.—F. F., May 16th, L'Islet.

*Nymphæacæ.*

8. *Nuphar advena*, Ait., (a very small form).—F. F., August, west end of Lake Matapedia.

*Sarraceniaceæ.*

9. *Sarracenia purpurea*, Linn.—F. F., June, Ste. Anne.

*Fumariaceæ.*

10. *Corydalis aurea*, Pursh.—F. F., August 30th, Restigouche River.

*Crucifera.*

11. *Sinapis arvensis*, Linn.—F. F., July 11th, Ste. Anne.

*Violaceæ.*

12. *Viola cucullata*, Ait.—F. F., May 30th, St. Simon.

*Cistaceæ.*

13. *Hudsonia tomentosa*, Nutt.—F. F., August 31st, River Restigouche.

*Parnassiaceæ.*

14. *Parnassia Carolinianum*, Michx.—F. F., August 30th.

*Caryophyllaceæ.*

15. *Silene inflata*, Smith.—F. F., July 6th, Ste. Anne.
16. *Mohringia lateriflora*, Linn.—F. F., July 23rd, Portage between Martin and Marsouin rivers.
17. *Spergula arvensis* (?), Linn.—No flower, August 12th, Metis.

*Oxalidaceæ.*

18. *Oxalis acetosella*, Linn.—Very abundant up the River Marsouin.
19. " *stricta*, Linn.—Going to seed, August 30th, River Restigouche.

*Anacardiaceæ.*

20. *Rhus Toxicodendron*, Linn.—Fruit ripe, August 31st, River Restigouche.

*Sapindaceæ.*

21. *Acer spicatum*, Linn.—Abundant everywhere on low land; just out of flower, July 5th, Ste. Anne. In seed, Sept. 11th, mouth of the Awaganasees Brook.
22. " *saccharinum*, Wang. (Hard Maple).—On rich soil only.

\* F. F. in full flower.

- Leguminosæ.*
23. *Trifolium repens*, Linn.—Abundant round clearings, &c., throughout the district. 51. *Sambucus*  
52. *Viburnum*
24. *Desmodium Canadense*, D. C.—F. F., August 12th and 31st, River Restigouche. *Compositæ*  
53. *Eupatorium*
25. *Vicia Cracca*, Linn.—F. F., July 11th, Ste. Anne. 54. “
26. *Lathyrus palustris*, Linn.—F. F., August 4th, mouth of the Marsouin. 55. *Aster m*  
56. “ *sin*
27. *Oxytropus Lambertii*, (?) Pursh.—F. F., August 31st, River Restigouche. 57. “ *lo*  
58. *Diplop*
- Rosacæ.*
28. *Prunus pumila*, Linn.—Fruit nearly ripe, August 31st, River Restigouche. 59. *Solidago*
29. “ *Pennsylvanica*, Linn.—Abundant throughout the Counties of Rimouski and Bonaventure. 60. “
30. “ *Virginiana*, Linn.—Fruit ripe, Sept. 1st, River Restigouche. 61. *Achill*
31. *Agrimonia Eupatoria*, Linn.—In seed, August 21st, fifteen miles up the River Matapedia. 62. *Leucant*
32. *Potentilla anserina*, Linn.—F. F., August 4th, mouth of the River Marsouin. 63. *Cirsium*
33. *Fragaria Virginiana*, Ehrhart.—Grass land throughout the district. Fruit ripe beginning of July, Ste. Anne. 64. “
34. *Rubus triflorus*, Rich.—Fruit ripe, July 12th, Ste. Anne; mouth of the Awaganases. 65. *Hieracium*  
66. *Nabalus*
35. “ *strigosus*, Miche.—Extremely abundant on burnt land and about fences throughout the district. 67. *Lobelia*  
*Lobeliacæ*
36. *Rosa blanda*, Ait.—In blossom, July 5th and 20th at Ste. Anne, and August 12th at Metis. 68. *Campanu*  
*Campanulacæ*
37. *Cratægus tomentosa*, Linn.—River Restigouche. 69. *Vacciniu*  
*Ericacæ*
38. *Pyrus Americana*, D. C.—Moderately abundant throughout the district. 70. *Chiogene*
- Onagracæ.*
39. *Epilobium augustifolium*, Linn.—F. F., July 16th, Ste. Anne. 71. *Androme*
40. “ *coloratum*, Muhl.—In seed, July, three miles up the River Marsouin. 72. *Pyrola ro*  
*Plantagi*
41. *Oenothera biennis*, Linn.—F. F., July 11th, Ste. Anne; August 30th, mouth of the River Matapedia. 73. *Plantago*  
*Primulacæ*
42. *Circæa Alpina*, Linn.—In flower, July 31st, mouth of the River Marsouin. 74. *Primula*  
*Lentibula*
- Saxifragacæ.*
43. *Mitella nuda*, Linn.—Seed ripe, July, 3 miles up the River Marsouin. 75. *Utriculari*
- Umbelliferæ.*
44. *Heracleum lanatum*, Michx.—F. F., July 16th, Ste. Anne.
45. *Sium lineare*, Mich.—F. F., August 12th, Metis.
- Cornacæ.*
46. *Cornus Canadensis*, Linn.—F. F., July 5th, Ste. Anne.
47. “ *stolonifera*, Michx.—F. F., June, Ste. Anne.
- Caprifoliacæ.*
48. *Linnea borealis*, Gronov.—F. F., June, Ste. Anne, and abundant everywhere.
49. *Lonicera ciliata*, Muhl.—In fruit, July 30th, Marsouin river.
50. *Dicervilla trifida*, Mænc.—F. F., August 30th, River Restigouche.

51. *Sambucus Canadensis*, Linn.—Abundant on low land.
52. *Viburnum opulus*, Linn.—F. F., July 16th, Ste. Anne.
- Compositæ.*
53. *Eupatorium purpureum*, Linn.—F. F., Sept. 3rd, mouth of the River Mata-  
pedia.
54. “ *ageratoides*, Linn.—F. F., July 31st, mouth of the River Mar-  
souin, and August 30th, River Restigouche.
55. *Aster miser*, Linn, Ait.—F. F., August 12th, Metis.
56. “ *simplex*, (?) Willd.—“ “ “
57. “ *longifolius*, (?) Lam.—“ “ “
58. *Diplopappus umbellatus*, Torr. and Gr.—F. F., June 30th, mouth of the  
River Matapedia.
59. *Solidago bicolor*, Linn.—Going out of flower, August 30th, River Resti-  
gouche.
60. “ *Canadensis*, Linn.—F. F., August 12th, Metis.
61. *Achillea millefolium*, Linn.—F. F., July 11th, Ste. Anne, and mouth of the  
Awaganasees, September.
62. *Leucanthemum vulgare*, Lam.—F. F., July 4th, Ste. Anne, and August  
30th, River Restigouche.
63. *Cirsium Muticum*, Michx.—F. F., August 30th, mouth of the River Matape-  
dia.
64. “ *pumilum* (?), Spreng.—Out of flower, August 30th, River Resti-  
gouche.
65. *Hieracium Canadense*, Michx.—F. F., August 30th, River Restigouche.
66. *Nabalus racemosus*, Hook. (“variety with truncate and obcordate leaves.”  
G. B.)—August 30th, River Restigouche.
- Lobeliaceæ.*
67. *Lobelia Kalmii*, Linn.—F. F., August 30th, River Restigouche.
- Campanulaceæ.*
68. *Campanula rotundifolia*, Linn.—F. F., August 4th, mouth of the River  
Marsouin, and August 30th, River Resti-  
gouche.
- Ericaceæ.*
69. *Vaccinium Pennsylvanicum*, (?) Lam.—In great profusion on hills which  
had been burnt over.
70. *Chiogenes hispidula*, Torr. and Gr.—In great abundance throughout the  
district.
71. *Andromeda polifolia*, Linn.—F. F., July 16th, Ste. Anne.
72. *Pyrola rotundifolia*, Linn.—“ “ “
- Plantaginaceæ.*
73. *Plantago maritima*, Linn.—F. F., August 4th, mouth of the River Marsouin.
- Primulaceæ.*
74. *Primula farinosa*, Linn.—Abundant all along the southern shore of the  
Gulf. F. F., end of May and June.
- Lentibulaceæ.*
75. *Utricularia vulgaris* (?) Linn.—Metis.

*Scrophulariaceæ.*

76. *Chelone glabra*, Linn.—F. F., August 12th, Metis.  
 77. *Veronica Americana*, Schweinitz.—Nearly out of flower, July 12th, Ste. Anne.  
 78. *Pedicularis Canadensis*, Linn.—F. F., August 10th, Matan.

*Labiatae.*

79. *Lycopus Virginicus*, Linn., (a very coarse form).—In flower, August 30th, River Restigouche.  
 80. *Brunella vulgaris*, Linn.—In flower, July 11th, Ste. Anne.  
 81. *Scutellaria nervosa*, Pursh.—In flower, August 12th, Metis.

*Borraginacæ.*

82. *Mertensia maritima* (?), Don.—In flower, beginning of July, Ste. Anne.

*Apocynacæ.*

83. *Apocynum androsæmifolium*, Linn.—F. F., August, between Metis and Lake Matapedia.

*Asclepiadacæ.*

84. *Asclepias cornuti*, Decaisne.—Abundant all along the Restigouche.

*Oleacæ.*

85. *Fraxinus sambucifolia*, Lam., (Black Ash).—In valleys, and along the shores of the Lakes.

*Polygonacæ.*

86. *Rumex acetosella*, Linn.—Coming into flower, July 16th, Ste. Anne.

*Urticacæ.*

87. *Ulmus Americana*, Linn., (Swamp Elm).—Very abundant, and of large size, along the River Restigouche.

*Cupuliferae.*

88. *Corylus rostrata*, Ait., (Hazel-nut).—Marsouin River.

*Betulacæ.*

89. *Betula papyracea*, Ait., (White Birch).—The most abundant deciduous tree throughout the eastern peninsula, and reaching a large size.

90. " *excelsa*, Ait., (Yellow Birch).—Most abundant round Lake Matapedia, and in the valleys of the Rivers Marsouin and Restigouche; generally associated with Hard Maple on rich soil.

91. *Alnus incana*, Willd., (Alder).—Everywhere bordering the streams and rivers, forming dense thickets.

*Salicacæ.*

92. *Populus tremuloides*, Michx., (Common Poplar).—Abundant on high lands.  
 93. " *balsamifera*, Linn., (Balsam Poplar, Balm of Gilead).—Abundant on the borders of rivers and lakes.

*Coniferae.*

94. *Pinus resinosa*, Ait., (Red Pine).—Abundant, but of small size, along the upper part of the River Patapedia.  
 95. " *strobus*, Linn., (White Pine).—Abundant everywhere.

96. *Abies*

97. " "

98. " a

99. *Larix*100. *Thuja*101. *Taxus**Alisma*102. *Sagitt**Orchid*103. *Platan*

104. "

105. *Spiran*106. *Corallo**Iridacæ*107. *Iris ver*108. *Sisyrin**Smilac*109. *Trillium**Liliacæ*110. *Smilac*

111. "

112. *Clinton**Melanth*113. *Strepto*114. *Tofield**Cyperacæ*115. *Erioph**Gramin*116. *Phleum*117. *Calama*118. *Elymus*

- ly 12th, Ste.
- August 30th,
- Ste. Anne.
- en Metis and
- ouche.
- and along the
- e. Anne.
- and of large  
he.
- deciduous tree  
la, and reach-
- Lake Matape-  
vers Marsouin  
associated with
- e streams and
- on high lands.  
)—Abundant  
es.
- ize, along the  
ia.
96. *Abies balsamea*, Marshall, (Balsam Fir).—Very abundant.
97. " *nigra*, Poir., (Black Spruce).—The principal, and in many places the sole tree covering the hilly country of the eastern peninsula.
98. " *alba*, Michx., (White or "Sea Spruce" of the Indians).—The commonest tree along the coast and rivers.
99. *Larix Americana*, Michx., (Tamarack).—Rather scarce, but occurring in every variety of situation throughout the district.
100. *Thuja occidentalis*, Linn., (White Cedar).—Very abundant in the vallies of all the rivers, reaching a very large diameter, but no great height.
101. *Taxus baccata*, Linn., var. *Canadensis*, (Ground Hemlock).—Abundant amongst trees on low ground.
- Alismaceæ.*
102. *Sagittaria variabilis*, Engelm.—F. F., August 15th, Metis.
- Orchidaceæ.*
103. *Platanthera flava*, Gray.—F. F., September 1st, River Restigouche.
104. " *psycodes*, Gray.—F. F., August 17th, West end of Lake Matapedia.
105. *Spiranthes decipiens*, (?) Hooker.—Coming into flower, July 30th, Marsouin River.
106. *Corallorhiza Macraei*, Gray.—Going to seed, July 31st, three miles up the River Marsouin.
- Iridaceæ.*
107. *Iris versicolor*, Linn.—F. F., July 4th, Ste. Anne.
108. *Sisyrinchium Bermudianum*, Linn., (variety *mucronatum*, Gray).—In flower, July 16th, Little Ste. Anne.
- Smilacæ.*
109. *Trillium erectum*, Linn., (very large).—Fruit ripe, July 31st, three miles up the Marsouin River.
- Liliaceæ.*
110. *Smilacina stellata*, Desf.—F. F., June, Ste. Anne.
111. " *bifolia*, Ker.—In seed, but not ripe, July 20th, Marsouin River.
112. *Clintonia borealis*, Raf.—Throughout the district.
- Melanthaceæ.*
113. *Streptopus roseus*, Michx.—F. F., June, Ste. Anne.
114. *Tofieldia glutinosa*, Willd.—Seed ripe, August 30th, River Restigouche.
- Cyperaceæ.*
115. *Eriophorum vaginatum*, Linn.—Ste. Anne.
- Gramineæ.*
116. *Phleum pratense*, Linn., (Timothy).—Table-topped Mountain, 3800 ft. above the sea; upper part of Magdalen River grows luxuriantly along roadsides, in openings in the woods &c.
117. *Calamagrostis Canadensis*, Beauv.—Shickshock Mountains.
118. *Elymus Canadensis*, Linn.—River Restigouche.

119. *Avena striata*, Michx.—(*Trisetum purpurascens*, Torr.) Shickshock Mountains.

*Equisetaceæ.*

120. *Equisetum pratense*, Ehrh.—Metis.

*Filices.*

121. *Asplenium felix-fœmina*, R. Br.—Mouth of the Awaganasees Brook.  
 122. *Aspidium spinulosum*, Swartz.— “ “ “  
 123. *Osmunda regalis*, Linn.—Round Metis Lake, &c.  
 124. *Botrychium Virginicum*, Swartz.—Fertile fronds ripe, July 28th, River Marsouin.

*Lycopodiaceæ.*

125. *Lycopodium lucidulum*, Michx.—In fruit Sept. 1st, River Restigouche.  
 126. “ *dendroideum*, Michx.— “ “ “  
 127. “ *clavatum*, Linn.— “ “ “  
 128. “ *complanatum*, Linn.— “ “ “

*Musci.*

129. *Polytrichum commune*. Linn.—Collected on the River Marsouin.  
 130. *Hypnum splendens*, Hedw.— “ “ “  
 131. “ *Schreberi*, Willd.— “ “ “  
 132. “ *Crista-Castrensis*, L.— “ “ “  
 133. “ *reptile*, Michx.— “ “ “

*Lichenes.*

134. *Peltigera aphthosa* (?) Hoffen, infert. River Marsouin.  
 135. *Sticta pulmonaria*, Ach.— “ “

