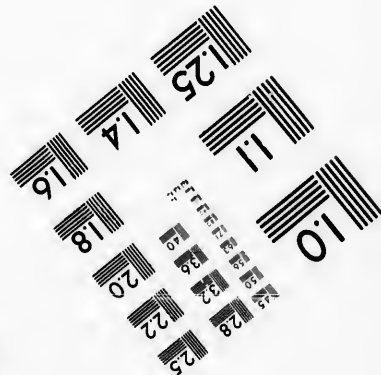
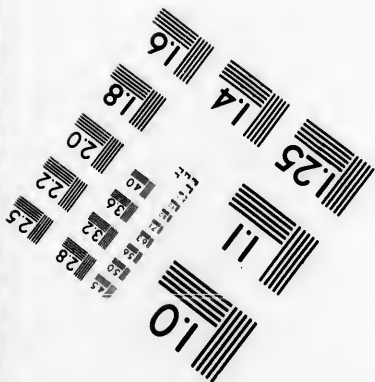
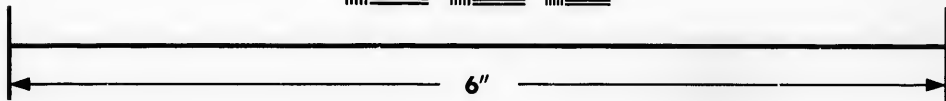
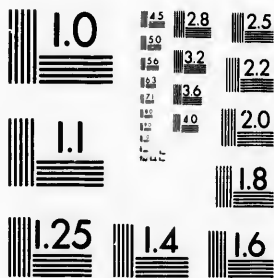


**IMAGE EVALUATION
TEST TARGET (MT-3)**



**Photographic
Sciences
Corporation**

23 WEST MAIN STREET
WEBSTER, N.Y. 14580
(716) 872-4503

**CIHM
Microfiche
Series
(Monographs)**

**ICMH
Collection de
microfiches
(monographies)**



Canadian Institute for Historical Microreproductions / Institut canadien de microreproductions historiques

© 1992

Technical and Bibliographic Notes / Notes techniques et bibliographiques

The Institute has attempted to obtain the best original copy available for filming. Features of this copy which may be bibliographically unique, which may alter any of the images in the reproduction, or which may significantly change the usual method of filming, are checked below.

L'Institut a microfilmé le meilleur exemplaire qu'il lui a été possible de se procurer. Les détails de cet exemplaire qui sont peut-être uniques du point de vue bibliographique, qui peuvent modifier une image reproduite, ou qui peuvent exiger une modification dans la méthode normale de filmage sont indiqués ci-dessous.

Coloured covers/
Couverture de couleur

Coloured pages/
Pages de couleur

Covers damaged/
Couverture endommagée

Pages damaged/
Pages endommagées

Covers restored and/or laminated/
Couverture restaurée et/ou pelliculée

Pages restored and/or laminated/
Pages restaurées et/ou pelliculées

Cover title missing/
Le titre de couverture manque

Pages discoloured, stained or foxed/
Pages décolorées, tachetées ou piquées

Coloured maps/
Cartes géographiques en couleur

Pages detached/
Pages détachées

Coloured ink (i.e. other than blue or black)/
Encre de couleur (i.e. autre que bleue ou noire)

Showthrough/
Transparence

Coloured plates and/or illustrations/
Planches et/ou illustrations en couleur

Quality of print varies/
Qualité inégale de l'impression

Bound with other material/
Relié avec d'autres documents

Continuous pagination/
Pagination continue

Tight binding may cause shadows or distortion along interior margin/
La reliure serrée peut causer de l'ombre ou de la distorsion le long de la marge intérieure

Includes index(es)/
Comprend un (des) index

Blank leaves added during restoration may appear within the text. Whenever possible, these have been omitted from filming/
Il se peut que certaines pages blanches ajoutées lors d'une restauration apparaissent dans le texte, mais, lorsque cela était possible, ces pages n'ont pas été filmées.

Title on header taken from:/
Le titre de l'en-tête provient:

Title page of issue/
Page de titre de la livraison

Caption of issue/
Titre de départ de la livraison

Masthead/
Générique (périodiques) de la livraison

Additional comments:/
Commentaires supplémentaires:

There are some creases in the middle of the pages.

This item is filmed at the reduction ratio checked below/
Ce document est filmé au taux de réduction indiqué ci-dessous.

10X	12X	14X	16X	18X	20X	22X	24X	26X	28X	30X	32X
<input type="checkbox"/>	<input type="checkbox"/>	<input type="checkbox"/>	<input type="checkbox"/>	<input type="checkbox"/>	<input type="checkbox"/>	<input type="checkbox"/>	<input type="checkbox"/>	<input type="checkbox"/>	<input checked="" type="checkbox"/>	<input type="checkbox"/>	<input type="checkbox"/>

re qu'il
de cet
int de vue
mage
fication
diqués

The copy filmed here has been reproduced thanks to the generosity of:

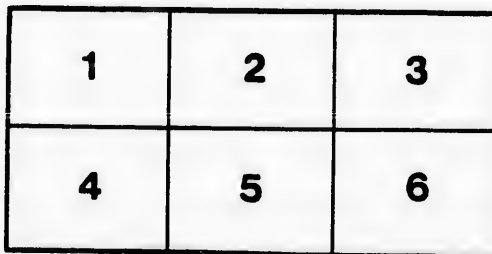
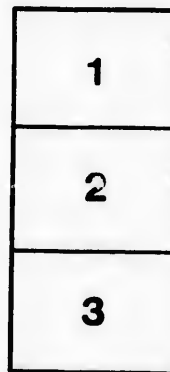
Manuscript Division,
National Archives of Canada

The images appearing here are the best quality possible considering the condition and legibility of the original copy and in keeping with the filming contract specifications.

Original copies in printed paper covers are filmed beginning with the front cover and ending on the last page with a printed or illustrated impression, or the back cover when appropriate. All other original copies are filmed beginning on the first page with a printed or illustrated impression, and ending on the last page with a printed or illustrated impression.

The last recorded frame on each microfiche shall contain the symbol \rightarrow (meaning "CONTINUED"), or the symbol ∇ (meaning "END"), whichever applies.

Maps, plates, charts, etc., may be filmed at different reduction ratios. Those too large to be entirely included in one exposure are filmed beginning in the upper left hand corner, left to right and top to bottom, as many frames as required. The following diagrams illustrate the method:



32x

L'exemplaire filmé fut reproduit grâce à la générosité de:

Division des manuscrits,
Archives nationales du Canada

Les images suivantes ont été reproduites avec le plus grand soin, compte tenu de la condition et de la netteté de l'exemplaire filmé, et en conformité avec les conditions du contrat de filmage.

Les exemplaires originaux dont la couverture en papier est imprimée sont filmés en commençant par le premier plat et en terminant soit par la dernière page qui comporte une empreinte d'impression ou d'illustration, soit par le second plat, selon le cas. Tous les autres exemplaires originaux sont filmés en commençant par la première page qui comporte une empreinte d'impression ou d'illustration et en terminant par la dernière page qui comporte une telle empreinte.

Un des symboles suivants apparaîtra sur la dernière image de chaque microfiche, selon le cas: le symbole \rightarrow signifie "A SUIVRE", le symbole ∇ signifie "FIN".

Les cartes, planches, tableaux, etc., peuvent être filmés à des taux de réduction différents. Lorsque le document est trop grand pour être reproduit en un seul cliché, il est filmé à partir de l'angle supérieur gauche, de gauche à droite, et de haut en bas, en prenant le nombre d'images nécessaire. Les diagrammes suivants illustrent la méthode.

MILITIA GENERAL ORDERS.

*Adjutant General's Office, }
York, 21st Jan. 1820.*

THE attention of Officers commanding Regiments of Militia, is called to the Order in Council of the 19th instant, herewith inclosed, declaring the gracious intention of His Royal Highness the Prince Regent, of making grants of Land to the Officers, Non-commissioned Officers, and Privates of the different Corps therein recited.

All Officers, Non-commissioned Officers, and Privates of the Militia, &c. comprehended in the description contained in the Order in Council above referred to, will be required to submit their claims for His Royal Highness's bounty to the Adjutant General, who, on being satisfied of their correctness, will give to each party concerned a Certificate thereof, which will be an authority to the Surveyor General to locate him.

The applications of Officers on the General Staff of the Militia, should be accompanied by a copy of the General Order, notifying their appointment, as should also those of the Field Officers of the Incorporated Battalions.

The applications of Captains and Regimental Staff Officers, should be supported by Certificates agreeably to the form A. Those of Officers of Companies, Non-commissioned Officers, Drummers, and Privates, by Certificates according to the form B.

In order to prevent confusion, or disappointment to the claimants, the applications from Officers on the General Staff and Incorporated Battalion, should be presented at the Office of the Adjutant General, between the 25th February and the 24th May, inclusive; those from the Flank Companies, between the 25th May and the 24th September; and from the Marine and remaining Corps, between the 25th September and 24th December, 1820.

All applications which are not received in time to be taken into consideration with those of the classes they respectively belong to, will be taken up after the last named day.

CERTIFICATE A.

I do hereby certify that
of the Regiment of Militia, commanded a Flank Company
between the and the (or acted as Adjutant, Quarter-Master,
Paymaster, Surgeon, &c. as the case may be.)
Witness my hand, this day of 182
Colonel,
or senior surviving Officer.

CERTIFICATE B.

I do hereby certify that
Company of the Regiment of actually served as in the
commanded by between the (as the case may be,) then
Witness my hand, this day of 182
Captain,
or senior surviving Officer of the Company.

I certify the above to be correct, according to the best of my knowledge and belief.
Colonel,
or senior surviving Officer of the Regiment of

** All applications must be made on or before the 24th February, 1821.

*By Command of His Excellency
the Lieutenant Governor,*

N. COFFIN, Colonel,
Adj. Gen. Militia, Upper-Canada.

