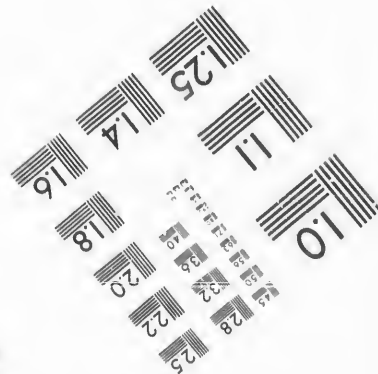
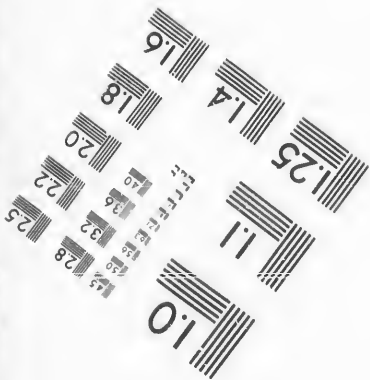
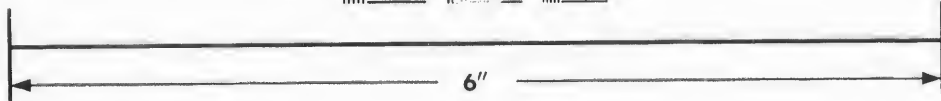
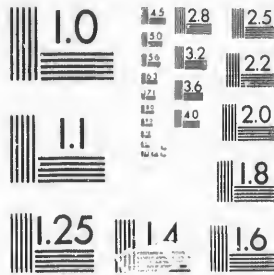


**IMAGE EVALUATION
TEST TARGET (MT-3)**



**Photographic
Sciences
Corporation**

23 WEST MAIN STREET
WEBSTER, N.Y. 14580
(716) 872-4503

28
25
22
20
18

**CIHM/ICMH
Microfiche
Series.**

**CIHM/ICMH
Collection de
microfiches.**



Canadian Institute for Historical Microreproductions / Institut canadien de microreproductions historiques

10
01

© 1987

Technical and Bibliographic Notes/Notes techniques et bibliographiques

The Institute has attempted to obtain the best original copy available for filming. Features of this copy which may be bibliographically unique, which may alter any of the images in the reproduction, or which may significantly change the usual method of filming, are checked below.

L'Institut a microfilmé le meilleur exemplaire qu'il lui a été possible de se procurer. Les détails de cet exemplaire qui sont peut-être uniques à un point de vue bibliographique, qui peuvent modifier une image reproduite, ou qui peuvent exiger une modification dans la méthode normale de filmage sont indiqués ci-dessous.

- | | |
|--|--|
| <input type="checkbox"/> Coloured covers/
Couverture de couleur | <input type="checkbox"/> Coloured pages/
Pages de couleur |
| <input type="checkbox"/> Covers damaged/
Couverture endommagée | <input type="checkbox"/> Pages damaged/
Pages endommagées |
| <input type="checkbox"/> Covers restored and/or laminated/
Couverture restaurée et/ou pelliculée | <input type="checkbox"/> Pages restored and/or laminated/
Pages restaurées et/ou pelliculées |
| <input type="checkbox"/> Cover title missing/
Le titre de couverture manque | <input checked="" type="checkbox"/> Pages discoloured, stained or foxed/
Pages décolorées, tachetées ou piquées |
| <input type="checkbox"/> Coloured maps/
Cartes géographiques en couleur | <input type="checkbox"/> Pages detached/
Pages détachées |
| <input type="checkbox"/> Coloured ink (i.e. other than blue or black)/
Encre de couleur (i.e. autre que bleue ou noire) | <input checked="" type="checkbox"/> Showthrough/
Transparence |
| <input type="checkbox"/> Coloured plates and/or illustrations/
Planches et/ou illustrations en couleur | <input type="checkbox"/> Quality of print varies/
Qualité inégale de l'impression |
| <input checked="" type="checkbox"/> Bound with other material/
Relié avec d'autres documents | <input type="checkbox"/> Includes supplementary material/
Comprend du matériel supplémentaire |
| <input type="checkbox"/> Tight binding may cause shadows or distortion
along interior margin/
La reliure serrée peut causer de l'ombre ou de la
distorsion le long de la marge intérieure | <input type="checkbox"/> Only edition available/
Seule édition disponible |
| <input type="checkbox"/> Blank leaves added during restoration may
appear within the text. Whenever possible, these
have been omitted from filming/
Il se peut que certaines pages blanches ajoutées
lors d'une restauration apparaissent dans le texte,
mais, lorsque cela était possible, ces pages n'ont
pas été filmées. | <input type="checkbox"/> Pages wholly or partially obscured by errata
slips, tissues, etc., have been refilmed to
ensure the best possible image/
Les pages totalement ou partiellement
obscurcies par un feuillet d'errata, une pelure,
etc., ont été filmées à nouveau de façon à
obtenir la meilleure image possible. |
| <input type="checkbox"/> Additional comments:/
Commentaires supplémentaires: | |

This item is filmed at the reduction ratio checked below/
Ce document est filmé au taux de réduction indiqué ci-dessous.

10X	12X	14X	16X	18X	20X	22X	24X	26X	28X	30X	32X
						✓					

The copy filmed here has been reproduced thanks to the generosity of:

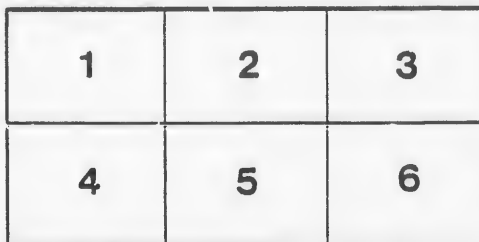
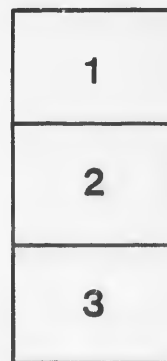
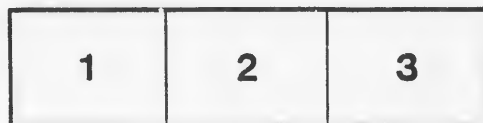
D.B. Weldon Library
University of Western Ontario
(Regional History Room)

The images appearing here are the best quality possible considering the condition and legibility of the original copy and in keeping with the filming contract specifications.

Original copies in printed paper covers are filmed beginning with the front cover and ending on the last page with a printed or illustrated impression, or the back cover when appropriate. All other original copies are filmed beginning on the first page with a printed or illustrated impression, and ending on the last page with a printed or illustrated impression.

The last recorded frame on each microfiche shall contain the symbol \rightarrow (meaning "CONTINUED"), or the symbol ∇ (meaning "END"), whichever applies.

Maps, plates, charts, etc., may be filmed at different reduction ratios. Those too large to be entirely included in one exposure are filmed beginning in the upper left hand corner, left to right and top to bottom, as many frames as required. The following diagrams illustrate the method:



L'exemplaire filmé fut reproduit grâce à la générosité de:

D.B. Weldon Library
University of Western Ontario
(Regional History Room)

Les images suivantes ont été reproduites avec le plus grand soin, compte tenu de la condition et de la netteté de l'exemplaire filmé, et en conformité avec les conditions du contrat de filmage.

Les exemplaires originaux dont la couverture en papier est imprimée sont filmés en commençant par le premier plat et en terminant soit par la dernière page qui comporte une empreinte d'impression ou d'illustration, soit par le second plat, selon le cas. Tous les autres exemplaires originaux sont filmés en commençant par la première page qui comporte une empreinte d'impression ou d'illustration et en terminant par la dernière page qui comporte une telle empreinte.

Un des symboles suivants apparaîtra sur la dernière image de chaque microfiche, selon le cas: le symbole \rightarrow signifie "A SUIVRE", le symbole ∇ signifie "FIN".

Les cartes, planches, tableaux, etc., peuvent être filmés à des taux de réduction différents. Lorsque le document est trop grand pour être reproduit en un seul cliché, il est filmé à partir de l'angle supérieur gauche, de gauche à droite, et de haut en bas, en prenant le nombre d'images nécessaire. Les diagrammes suivants illustrent la méthode.

VOTERS' LIST

—FOR THE—

W

VILLAGE OF LUCAN

—FOR THE—

YEAR 1890.

The Sheriff shall, immediately upon receipt of his copies, cause one of them to be posted up in a conspicuous place in the court house. The clerk of the Peace upon receipt of his copies, shall cause one of them to be posted up in a conspicuous place in his office. Every public or separate school head master or mistress, shall, in like manner, post up one of his or her copies on the door of the school house, and every postmaster shall post up one of his copies in his post office.—Voters' List Act, 1889, Chap. 3, Sec. 8.



LUCAN :

PRINTED AT THE OFFICE OF "THE RECORD" (BRYANT BROS) WILLIAM STREET.

— — —
1890.



Polling Sub-Division No. 1.

Persons entitled to vote at both Municipal and Legislative Assembly Elections.

Roll	NAME	Profession	Con or St.	Lot or pt of Lot	Class
4	Armitage, William	Laborer	Con 4	e pt 6	f m f
23	Armitage, J R	Agent	Princess st	e p 20 p 21	f m f
34	Armitage, John	Merchaunt	Main st	190	f m f
35	Armitage, Malcolm	Clerk	Main st	196	o s m f
63	Atkinson, David	Farmer	S L R	pt farm 4	f m f
64	Atkinson, Thomas	Farmer	S L R	pt farm 4	f m f
156	Armitage, James	Stonecutter	William st	b 8	t m f
29	Bryant, William	Printer	William st	n pt 6	h m f
29	Bryant, Richard	Printer	William st	n pt 6	h m f
44	Bowman, Thomas	Lawyer	Main st	n pt 2	h m f
55	Butler, Ephriam	Laborer	Main st	58, 59	f m f
55	Burnett, James	Farmer	S L R	pt farm 4	f m f
193	Bell, Joseph	Laborer	William st	2	h m f
205	Bawden, George	Mason	William st	17	h m f
218	Braithwaite, A F	Engineer	Frank st	s pt 2	h m f
240	Brampton, William	Laborer	George st	60	h m f
241	Brand, Fred	Carpenter	S L R	pt farm 5	h m f
244	Butler, Peter	Farmer	S L R	pt farm 5	f m f
245	Butler, Peter E	Farmer	S L R	pt farm 5	f m f
246	Butler, Everet	Laborer	S L R	pt farm 5	f m f
1	Casey, Thomas	Laborer	Con 4	12	f m f
2	Carty, Con	Laborer	Con 4	11	f m f
17	Clerk, H S	M D	Main st	256	f m f
25	Cathcart, George	Shoemaker	Princess st	43	f m f
38	Collins, Robert	Tinsmith	Main st	pt 187	f m f

POLLING SUB-DIVISION NO. 1.

Jurors	No. on Roll	NAME	Profession	Con or St.	Lot or pt of Lot	Class
j	49	Collins, J R	Tailor	Main st	pt 28	h m f
j	50	Culbert, John	Laborer	Main st	n pt 29	h m f
j	52	Creighton, Thomas	Hotelkeeper	Main st	n pt 30	f m f
j	189	Cubbon, Thomas	Merchant	William st	w pt 5	f m f
j	193	Crouch, Fred	Stationmaster	William st	2	f m f
j	200	Cain, J F	Hotel keeper	S L R	w pt 5	f m f
j	226	Caves, Alexander	Laborer	Water st	45, 46	f m f
j	230	Caves, Robert	Carpenter	Water st	40	f m f
	243	Cousins, James	Watchman	G T R	Grounds	n m f
	245	Collison, Martin	Farmer	Albert st	58	f m f
j	28	Dann, William	V S	William st	n pt 6	h m f
	48	Drought, Richard	Farmer	Main st	n pt 29	f m f
j	194	Deacon, John	Laborer	William st	1	h m f
j	205	Dight, Norris	Miller	William st	pt 18	f m f
j	209	Durham, Michael	Gentleman	Frank st	21	f m f
j	209	Durham, Leonard	Gentleman	Frank st	21	f m f
j	214	Dagg, John	Baker	Frank st	25	f m f
j	235	Donevan, Wm	Foundryman	Main st	88 89	f m f
j	6	Eedy, John	Gentleman	Elm st	57	f m f
j	24	Edwards, C B	Teacher	Princess st	200	h m f
j	54	Ellwood, Wm	Tailor	Main st	55, 56, 57	f m f
j	24	Fogarty, Patrick	Farmer	Princess st	pt 199 pt 200	f m f
j	45	Farrell, John	Druggist	Main st	n pt 2	f m f
j	191	Fox, Robert	Conveyancer	William st	w pt 4	f m f
j	192	Gibson, Wilson	Carpenter	William st	3	h m f
j	198	Gillis, Samuel	Operator	S L R	pt farm 5	h m f
j	202	Gibson, Sylvaniaus	Carpenter	William st	76, 77	f m f
j	236	Gibson, Herbert	Carpenter	George st	71	f m f

POLLING SUB-DIVISION NO 1.

Jurors	No on Roll	NAME	Profession	Con. or St	Lot or pt of Lot	Class
j	10	Haskett, Thos	Gentleman	Main st	265, 266	f m f
j	40	Hodgins, Jonathan	Liveryman	Main st	e pt 149	f m f
j	47	Haskett, Charles	Undertaker	Main st	pt 28 pt 25	h m f
j	51	Howe, Daniel	Laborer	Main st	e pt 30	h m f
j	55	Husband, Thos	Painter	Main st	58, 59	h m f
	62	Howard, Thos	Carpenter	S L R	pt farm 4	f m f
j	190	Hodgins, Samuel	Gentleman	William st	e pt 4	h m f
j	198	Hodgins, John A	Station agent	S L R	pt farm 5	f m f
j	206	Hodgins, George	Farmer	William st	e pt 18	f m f
j	220	Hodgins, Isaac	Gentleman	Water st	53	h m f
j	225	Hodgins, Geo	Bailiff	Water st	47	f m f
	225	Hodgins, G M	VS	Water st	47	o s m f
j	237	Hodgins, Thos	Laborer	George st	66	f m f
j	250	Hutchins, Wm	Grainbuyer	William st	Storehouse	f m f
j	195	Judge, Wesley	Farmer	William st	9	h m f
j	249	Judd, Isaac	Farmer	Butler st	149, 150	h m f
	9	Kitt, Thos	Lumber Merchant	Main st	267	f m f
j	8	Lusk, James	Farmer	Main st	268	f m f
j	13	Mayo, James	Laborer	Main st	260	f m f
j	35	McLean, Robert	Hotelkeeper	Main st	188 pt 189	f m f
j	37	McCosh, Donald	Merchant	Main st	pt 188	h m f
	39	McDiarmid, Wm	Lawyer	Main st	pt 187	h m f
j	52	McCull, J D	Hotelkeeper	Main st	n pt 30	h m f
j	59	McIlhargey, Dennis	Farmer	S L R	pt farm 5	f m f
j	188	McNamee, Robt	Clerk	William st	e pt 5	h m f
j	211	McLean, Samuel	Laborer	Frank st	e pt 23	f m f
j	212	McGuire, David	Gentleman	Frank st	n pt 23	h m f

POLLING SUB-DIVISION NO 1.

Jurors	No. on Roll	NAME	Profession	Con. or St	Lot or pt of Lot.	Class
j	221	McFalls, Alexander	Farmer	Water st	52	f m f
j	248	McLeod, John	Laborer	Butler st	152, 153	h m f
j	205	Norton, Thos	Machinist	William st	pt 18	h m f
j	217	Neil, Richard	Agent	Frank st	7	f m f
j	234	Neil, Francis	Gentleman	George st	74, 75	h m f
j	18	O'Neil, R H	Banker	Main st	253	f m f
j	19	O'Neil, R A	Bank Clerk	Albert st	64	f m f
j	32	O'Neil, F A	Banker	Main st	w pt 191	f m f
j	46	Orme, J W	Printer	Main st	e pt 28	f m f
j	215	Orme, Thos	Gentleman	Frank st	26	f m f
j	30	Porte, Wm	Postmaster	Main st	pt 191 pt 192	f n f
	31	Porte, Fred	Operator	Main st	pt 191 pt 192	o s m f
j	201	Patrick, Lorene	Farmer	S L R	pt farm 5	f m f
j	234	Parker, George	Cooper	George st	74, 75	f m f
j	221	Ryan, Francis	Thresher	Water st	52	h m f
j	223	Ryan, John	Laborer	Water st	50	h m f
j	231	Russell, Jessie	Laborer	Water st	35, 36	f m f
j	232	Russell, Francis	Laborer	Water st	35, 36	f m f
j	233	Robinson, Henry	Laborer	Water st	31, 32, 33, 34	f m f
j	3	Sheridan, James	Laborer	Con 4,	10	f m f
j	7	Stanley, James	Agent	Main st	269, 270	f m f
j	11	Scott, Adam	Gentleman	Main st	263, 264	f m f
j	22	Shaver, Wm	Gentleman	Princess st	202	f m f
j	28	Stanley, Wm	Agent	William st	e pt 6	f m f
j	56	Stanley, Bernard	Gentleman	Main st	pt farm 5	f m f
j	57	Stanley, Albert	Grainbuyer	Main st	pt farm 5	f m f

POLLING SUB-DIVISION NO 1.

Jurors	No. on Roll	NAME	Profession	Con. or St	Lot or pt of Lot	Class
j	56	Stanley, Aljoe	Clerk	Main st	pt farm 5	o s m f
	58	Shaw, Rev	Preacher	Main st	pt farm 5	h m f
j	60	Shaw, Thomas	Farmer	Main st	pt farm 4	f m f
	60	Shaw, Wesley	Teacher	Main st	pt farm 4	o s m f
j	203	Stewardson, Jas	Laborer	William st	16	f m f
j	207	Sceli, James	Laborer	Frank st	19	f m f
j	208	Sproul, Charles	Carriage maker	Frank st	20	f m f
j	213	Simpson, Joseph	Laborer	Frank st	24	f m f
j	216	Sproul, Wm	Blacksmith	Frank st	6	f m f
j	222	Stanley, Leonard	Merchant	Water st	51	h m f
j	223	Stanley, Thomas	Gentleman	Water st	51	f m f
j	224	Stewardson, John	Pumpmaker	Water st	48, 49	f m f
j	234	Sceli, Robert	Sawyer	Water st	42, 43	f m f
j	242	Sadleir, James	GTR agent	S L R	station grounds	h m f
j	12	Trevitick, Samuel	Gentleman	Elm st	s pt 69	f m f
j	16	Tennant, Ezekiel	V S	Main st	257, 258	f m f
j	228	Taylor, Steward	Carpenter	Water st	n pt 80	h m f
j	239	Turner, Elijah	Farmer	George st	63	f m f
j	33	Wilson, James	Baker	Main st	pt 191 pt 192	h m f
j	199	Young, Wm	Laborer	S L R	pt farm 5	h m f

PART II.--Persons entitled to vote at Municipal elections ONLY.

210	Atkinson, Mrs Wm	Frank st	22	f
194	Deacon, Mrs.	William st	1	f
219	Dowe, Mrs.	Water st	54	f

POLLING SUB-DIVISION NO. 1.

Jurors	No. on Roll	NAME	Profession	Con or St.	Lot or pt of Lot	Class
	247	Davis, Mrs.		S L R	pt farm 5	f
	5	Eedy, Mrs.		Main st	271, 272	f
	15	Hutchinson, Mrs.		Main st	255	f
	43	Hawkshaw Mrs.		Main st	n pt 1	f
	62	Howard, Mrs.		S L R	pt farm 4	f
	50	Johnston, Mrs.		Main st	e pt 29	f
	195	Judge, Mrs.		William st	9	f
	20	Lintott, Mrs.		Princess st	205	f
	26	Lee, Mrs.		Main st	41	f
	38	Meads, Mrs.		William st	12	f
	192	McRoberts, Mrs		William st	3	f
	204	Hodgins, Mrs H.		William st	17	f
	14	O'Boyle, Mrs.		Elm st	n pt 69	f
	197	O'Shea, Mrs.		William st	10, 11	f
	187	Sproat, Mrs.		William st	e pt 5	f
	41	Thompson, Mrs.		Main st	pt 187	f
	21	Willis, Mrs.		Princess st	203, 204	f
	227	Wright, Mrs.		Water st	pt farm 5	f

PART III.--Persons entitled to vote at Legislative Assembly elections ONLY.

Bell, Wm	Baker	Main st	pt 191	m f
Beechy, Walter	Stage driver	Main st	28	m f
Bryant, Albert	Stage driver	Main st	pt 187	m f
Bell, Thos,	Laborer	William st	2	m f
Dagg, John	Laborer	William st	pt 1	m f
Dewan, Wm,	Cheese maker	S L R	w pt 5	m f
Hawkshaw, John	Laborer	Main st	n pt 61	m f
Knox, George	Laborer	William st	w pt 5	m f

POLLING SUB-DIVISION NO 1.

Jurors	No. on Roll	NAME	Profession	Con. or St	Lot or pt of Lot	Class
		McLoud, Robert	Clerk	Main st	189	m f
		Major, Wm	Laborer	Princess st	e pt 200	m f
		Mounton, Richard	Shoemaker	S L R	pt farm 5	m f
		McMahon, James	Gentleman	Main st	41	m f
		Meads, Melvin	Painter	Water st	s pt 80	m f
		O'Shee, Daniel,	Laborer	William st	10, 11	m f
		Ryder, Michael	Operator	Main st	191	m f
		Smith, Adam D	Mail driver	Main st	28	m f
		Sproul, Wm	Laborer	Water st	51	m f
		Sceli, Alexander	Tailor	Main st	pt 189	m f
		Sceli David	Tailor	Main st	pt 189	m f



Polling Sub-Division No. 2.

PART I.--Persons entitled to vote at both Municipal and Legislative Assembly Elections.

Jurors	No. on Roll	NAME	Profession	Con or St.	Lot or pt of Lot	Class
	72	Armitage, Wm	Farmer	Main st	103, 104	f m f
j	136	Anderson, James	Carriage maker	Alice st	e pt 8	f m f
j	173	Alway, James	Pumpmaker	Maple st	134, 135	f m f
j	76	Bawden, John	Builder	Main st	e pt 93, 94	f m f
	77	Bawden, W m J	Mason	Main st	e pt 93, 94	c s m f
j	140	Blackwell, Freeman	Gentleman	Alice st	e pt 7	h m f
j	174	Blackwell, Edward	Laborer	Maple st	136	f m f
j	178	Bryant, Wm	Printer	Con 4	w pt 3	h m f
j	115	Clapp, John	Laborer	Con 4	222 to 225	h m f
	158	Cooper James	Laborer	Market st	101	f m f
	159	Cooper, Richard	Laborer	Market st	101	c s m f
j	168	Collins, Henry	Tinsmith	Market st	129	f m f
	169	Collins, E J	Tinsmith	Market st	129	c s m f
j	186	Cooper, William	Laborer	Beech st	9	f m f
j	92	Diamond, William	Merchant	Main st	158	f m f
j	142	Downham, Peter	Cheesemaker	Alice st	e pt 165	f m f
j	144	Dight, Thomas	Grainbuyer	Alice st	167	f m f
j	183	Davis, James	Gentleman	Beech st	64	f m f
j	184	Davis, William	Gentleman	Beech st	61	f m f
j	104	Ellis, G A	Artist	Main st	n pt 7	h m f
j	89	Fox, Leonard	Merchant	Main st	87	f m f
j	97	Fox, John	Banker	Main st	e pt 160	f m f
	109	Frice, A H	Barber	Main st	243,244,245	f m f

POLLING SUB-DIVISION NO 2.

Jurors	No. on Roll	NAME	Profession	Con. or St	Lot or pt of Lot	Class
	134	Flavin, James	Tailor	Alice st	15	f m f
j	139	Frank, J C	Clerk	Alice st	u pt 8	h m f
j	73	Guest, Robert	Gentleman	main st	101, 102	f m f
j	95	Grant, John R	Merchant	Main st	e pt 159	h m f
j	126	Gillespie, James	Gentleman	Richmond st	23	f m f
j	149	Gillis, James	Clerk	Alice st	170, 171	f m f
	177	Hodgins, George	Laborer	Con 4	e pt 3	h m f
	67	Hall, Joseph	Farmer	N L R	pt farm 4	h m f
j	69	Hodgins, Thomas	Merchant	Main st	111, 112	f m f
j	80	Hodgins, Thomas	Blacksmith	Main st	91	f m f
j	73	Hodgins, John S	Agent	Main st	99, 100	f m f
j	107	Hossack, Thomas	M D	Main st	239	f m f
	93	Harding, Samuel	Butcher	Main st	u pt 159	h m f
	94	Harding, Philip	Butcher	Main st	u pt 159	h m f
j	110	Hodgins, John	Gentleman	Main st	246 to 250	f m f
j	113	Hodgins, John	Farmer	Con. 4	231	f m f
j	114	Howard, William	Laborer	Con. 4	236 to 238	f m f
	123	Henders, Rev R C	Preacher	Princess st	207	h m f
j	132	Haskett, Mitchell	Gentleman	Alice st	15, 16, 17	f m f
	147	Hodgins, Wm	Laborer	Alice st	e pt 169	h m f
j	160	Hodgins, John C	Gentleman	Market st	99	f m f
i	161	Haskett, Wm	Drover	Market st	97, 98	f m f
j	164	Hooper, Wm E	Gentleman	Market st	94, 95	f m f
	165	Hooper, Wm	Clerk	N L R	pt 5	f m f
j	166	Haskett, Charles	Undertaker	Market st	98	f m f
j	170	Hodgins, Wellington	Drover	Market st	130, 131	h m f
j	170	Hodgins, John R	Farmer	Market st	130, 131	f m f

Jurors.	No. on Roll	NAME	Profession	Con or St.	Lot or pt of Lot	Class
j	151	Jackson, John	Foundry-man	Alice st	174, 175	f m f
	68	Kent, Wm	Gentleman	Main st	113 to 117	f m f
j	137	Kenny, John	Blacksmith	Alice st	n pt 9	h m f
	138	Kenny, John	Blacksmith	Alice st	184	f m f
	138	Kenny, Thos	Blacksmith	Alice st	184	f m f
j	162	Kinnee, John C	Carpenter	Market st	96	f m f
	163	Kinnee, Peter	Laborer	Market st	98	f m f
j	70	Langford, Joseph	Gentleman	Main st	107 to 110	f m f
j	175	Langford, William	Gentleman	Market st	105 to 108	f m f
j	176	Morley, John	Gentleman	Con 4	e pt 62	f m f
j	74	McCosh, James	Merchant	Main st	97, 98	f m f
j	78	McNamara, R P	Clerk	Main st	e pt 92	h m f
j	81	Murdock, Thompson	Shoemaker	Main st	90	f m f
j	82	Murdy, John	Undertaker	Main st	81	f m f
	83	Murdy, Wellington	Farmer	Main st	n pt 91	o s m f
j	84	McLeod, Wm	Carriagebuilder	Main st	82	f m f
	83	McConnell, J H	Tailor	Main st	84	f m f
j	90	Matheson, Wm	Watchmaker	Main st	87	f m f
	95	McIlhargey, Patrick	Gentleman	Main st	e pt 159	f m f
j	96	Mara, Edward	Merchant	Main st	n pt 160	f m f
	118	McKinnon, Donald	Laborer	Princess st	32	h m f
	135	McGuire, John	Carriagebuilder	Alice st	11	f m f
j	141	McCombs, James	Merchant	Alice st	n pt 165	h m f
j	142	Mulloy, C W	Teacher	Alice st	e pt 165	h m f
j	143	McRoberts, J H	Drover	Alice st	166	f m f
	140	Neil, Albert	Gentleman	Alice st	e pt 7	f m f
j	86	O'Shea, James	Shoemaker	Main st	e pt 85	f m f
j	91	O'Neil, Ralph	Hotelkeeper	Main st	157, pt 158	f m f
j	134	O'Neil, Daniel	Gentleman	Alice st	13	h m f
j	167	Perley, Daniel B	Carpenter	Market st	pt 84 and 85	f m f

POLLING SUB-DIVISION NO 2.

Jurors	No. on Roll	NAME	Profession	Con. or St	Lot or pt of Lot	Class
j	103	Parks, J S	Harnessmaker	Main st	pt 164	h m f
	112	Patrick, Wm	Farmer	Main st	251	f m f
j	121	Pogue, Geo	Barber	Princess st	37	h m f
j	133	Quigley, Caleb	Painter	Alice st	14	f m f
j	154	Quigley, Wm	Shoemaker	Market st	104	f m f
	155	Quigley, Frank	Artist	Market st	94	f m f
j	108	Rutledge, Joseph	V S	Main st	240	h m f
	129	Robinson, William	Bricklayer	Alice st	21, 22	f m f
	141	Rollins, William	Farmer	Alice st	n pt 165	f m f
	156	Robinson, Thos	Carpenter	Market st	103	f m f
	157	Robinson, Geo.	Butcher	Market st	103	o s m f
j	72	Reid, Wm	Merchant	Market st	133	f m f
j	71	Stanley, W R	Agent	Main st	105, 106	f m f
j	75	Stanley, W E	Merchant	main st	95, 96	f m f
j	100	Stanley, Charles	Merchant	Main st	162	f m f
	102	Smith, Montgomery	Merchant	Main st	163	f m f
j	105	Sanders, C W	Gentleman	main st	236 to 238	f m f
	166	Sanders, C A	Book-keeper	Main st	236 to 238	o s m f
	117	Sadleir, John	Laborer	Princess st	31	f m f
j	122	Stanley, Geo	Merchant	Princess st	38	f m f
	104	Thoms, J S	Artist	Main st	n pt 7	f m f
	128	Tracey, Thos	Laborer	Alice st	23, 24	o s m f
j	185	Thurman, Green	Laborer	Beech st	188	f m f
j	177	Ward, William	Flax Grower	Con 4	e pt 3	f m f
j	177	Ward, Michael	Flax Grower	Con 4	e pt 3	f m f
j	180	Webb, Thos	Gentleman	Beech st	s pt 4	f m f
	181	Winer, Andrew	Laborer	Maple st	n pt 62	h m f
PART II.--Persons entitled to vote at Municipal elections ONLY.						
	98	Atkinson, Miss E	Merchant	main st	n pt 161	f
	152	Brownlee, Mrs		Alice st	178	f
	145	Cathcart, Mrs		Alice st	168	f

POLLING SUB-DIVISION NO. 2.

Jurors.	No. on Roll	NAME	Profession	Con or St.	Lot or pt of Lot	Class
	125	Cole, Mrs		Princess st	210, 211	f
	115	Cain Mrs		Con. 4	222 to 225	f
	130	Dagg, Mrs		Alice st	20	f
	116	Davis, Mrs S		Con 4	219, 222	f
	179	Deacon, Mrs		Con 4	pt 2	f
	124	Frank, Mrs		Princess st	208, 209	f
	87	Goodaere, Mrs		main st	n pt 86	f
	146	Gifford, Mrs		Alice st	n pt 169	f
	148	Gillies, Mrs		Beech st	102	f
	66	Hall, Mrs		N L R	pt farm 4	f
	111	Haslem, Mrs		main st	249	f
	131	Harrigan, Mrs		Alice st	18, 19	f
	119	O'Mara, Mrs		Princess st	33, 34	f
	153	Secli, Mrs		Alice st	183	f
	79	Simpson, Mrs		main st	e pt 92	f
	127	Tracey, Mrs		Alice st	23, 24	f
	120	Varley, Mrs		Princess st	35, 36	h

PART III.—Persons entitled to vote at Legislative Assembly elections ONLY.

Blackwell, T J	Laborer	maple st	163	m f
Bailey, Benjamin	M D	main st	157	m f
Casey, Patrick	Laborer	Alice st	166	m f
Dreudowne, Louis	Laborer	main st	w pt 30	m f
Empy, Alex	Clerk	Main st	162	mf
Hodgins, James A	Laborer	Albert st	66	m f
Hodgins, Albert	Laborer	Alice st	e pt 169	m f
Hodgins, J J	Grainbuyer	main st	s pt 161	m f
Kenny, Thos	Blacksmith	Alice st	184	m f
McKinnon, John	Laborer	Princess st	32	m f
Murdock, Hugh	Laborer	main st	90	m f
McCarty, Daniel	Laborer	maple st	n pt 62	m f
McFalls, John	Laborer	main st	e pt 149	m f
Noyce, Arthur	Butcher	main st	n pt 149	m f
Teal, Emmanuel	Stone Cutter	Main st		

MUNICIPALITY OF VEG DE

