

NORTH AMERICAN FREE TRADE AGREEMENT

TARIFF SCHEDULE OF CANADA

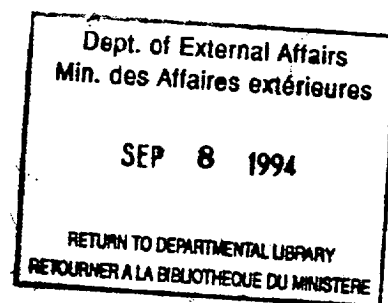
ERRATA

Canada

NORTH AMERICAN FREE TRADE AGREEMENT

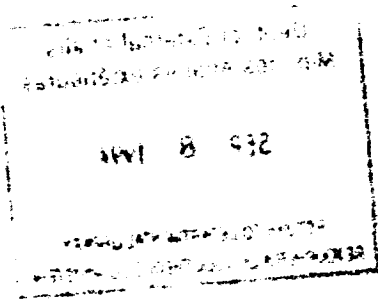
TARIFF SCHEDULE OF CANADA

ANNEX 302.2



1992

The following errata were identified by the three governments in the December 17, 1992, NAFTA Legal Text during the process of authenticating the text.



(Publié également en français)



ERRATA

North American Free Trade Agreement

Tariff Schedule of Canada

1. 0207.50.00 - Staging Category and Column I Base Rate should indicate not applicable by the symbols "*" and "-" respectively.
2. 0503.00.10 - Staging Category should indicate "A"; Column I Base Rate should indicate "25%".
3. 1212.92.00 - Column I Base Rate should indicate "8.7%".
4. 1601.00.92 - new tariff item - "of fowls of the species Gallus domesticus and turkeys, of heading No. 01.05". Staging Category and Column I and Column II Base Rate should indicate not applicable by the symbols "*" and "-" respectively.
5. 1602.10.10 - text should read "of fowls of the species Gallus domesticus and turkeys, of heading No. 01.05".
6. 1602.20.20 - Staging Category and Column I Base Rate should indicate not applicable by the symbols "*" and "-" respectively.
7. 2106.90.31 - following should be deleted from text "including mixes for ice cream or ice milk, other than those of tariff item No. 1901.90.31; other mixes for ice cream or ice milk:".
8. 2309.90.32 and 2309.90.33 - following should be deleted from text for both items : "and less than 6% by weight of grain or grain products". Line for tariff item 2309.90.39 to be deleted.
9. 2309.90.91 - Staging Category should indicate "D".
10. 2402.10.90 - Column I Base Rate should indicate "\$1.600/kg and 5%".
11. 2937.21.00 - Staging Category should indicate "A".
12. 3003.90.10 - text should read "amino acid disorders".

13. 5407.60.10 - Addition of the words "solely of polyesters". Text should read: "Solely of polyesters, of single yarns measuring not less than 75 decitex but not more than 80 decitex, having 24 filaments per yarn and a twist of 900 or more turns per metre".
14. 8422.11.91 - Column II Base Rate should indicate "6.2%".
15. 8422.11.99 - Column II Base Rate should indicate "7%".
16. 8422.90.21 - Staging Category should indicate "D" and Column I and Column II Base Rate should indicate "Free".
17. 8466.94.11 and 8466.94.91 - delete words "fly wheel" from the description.
18. 8473.30.10 - text should read "Parts, other than printed circuit assemblies, of printers specified in Supplementary Note 2 to this Chapter".
19. Preamble to tariff items 8473.30.21 and 8473.30.22 should delete the words "and parts and accessories thereof, other than parts of printers specified in Supplementary Note 2 to this Chapter:" and replace with "other than for power supplies for automatic data processing machines of heading 84.71".
20. 8473.30.23 - Staging Category should indicate "D". Description should delete the following: "of the goods of tariff item No. 8471.92.21, 8471.92.22, 8471.92.23, 8471.92.24, 8471.92.25, 8471.92.26, 8471.92.29, 8471.92.50, 8471.93.10 or 8471.99.10".
21. 8479.90.61 - Addition of the letter "s" to plate. Text should read: "Frame assemblies of the goods of tariff item No. 8479.89.91, incorporating at least two of the following: baseplate, side frames, power screws, front plates".
22. 8483.50.20 - Addition of new tariff item - "8483.50.20 - flywheels". Staging Category is "B" and Column I and Column II Base Rates are 6%.
23. 8504.90.14 - Delete current 8504.90.14 and add the following:
 - "8504.90.14 - Of the goods of tariff item No. 8504.40.40 Staging Category should be "A"
 - 8504.90.17 - Of the goods of tariff item No. 8504.40.50 Staging Category should be "B" Column I and Column II rates should both be 6%

- 8504.90.80 - Other parts of power supplies of tariff item
No. 8504.40.40
Staging Category should be A.
24. 8509.90.41 - Column II Base Rate should indicate "2.5%".
25. 8509.90.49 - Column II Base Rate should indicate "2.5%".
26. 8516.90.61 - Staging Category should indicate "B" and Column
I and Column II Base Rates should indicate "8%".
27. 8516.90.63 - Staging Category should indicate "B" and Column
I and Column II Base Rates should indicate "8%".
28. 8516.90.80 - Column II Base Rate should indicate "5.4%".
29. 8517.90.31 - text should read "Supplementary Note 2".
30. 8522.90.33 - Staging Category should indicate "A".
31. 8522.90.93 - Staging Category should indicate "A".
32. 8522.90.95 - Column II Base Rate should be "Free".
33. 8528.10 - Should read as follows:
- Incomplete or unfinished television receivers
(including video monitors and video projectors),
including assemblies for television receivers
consisting of all of the parts specified in
Supplementary Note 4 to Chapter 85 plus a power
supply, and including assemblies for video
monitors and video projectors consisting of the
goods specified in subparagraphs (a), (b), (c) and
(e) of Supplementary Note 4 to Chapter 85 plus a
power supply, but not incorporating a cathode ray
tube, flat panel screen or similar display:
- 8528.10.11 ----Television receivers combined in the same
housing with video recording or reproducing
apparatus (V.C.R.'s)
B / 5.5% / 8.3%
- 8528.10.12 -----Video monitors combined in the same housing
with video recording or reproducing apparatus
(V.C.R.'s)
B / 7.5% / 7.5%

- 8528.10.18 ----Other television receivers
B / 7.5% / 7.5%
- 8528.10.19 ----Other video monitors
B / 7.5% / 7.5%
- Television receivers combined in the same housing with video recording or reproducing apparatus (V.C.R.'s) :
- 8528.10.21 ----Non-high definition, having a single picture tube intended for direct viewing (non-projection type), with a video display diagonal not exceeding 35.56 cm
B / 5.5% / 8.3%
- 8528.10.22 ----Non-high definition, having a single picture tube intended for direct viewing (non-projection type), with a video display diagonal exceeding 35.56 cm
B / 5.5% / 8.3%
- 8528.10.23 ----High definition non-projection type, with cathode ray tube
B / 5.5% / 8.3%
- 8528.10.24 ----Non-high definition projection type, with cathode ray tube
B / 5.5% / 8.3%
- 8528.10.25 ----High definition projection type, with cathode ray tube
B / 5.5% / 8.3%
- 8528.10.26 ----Other, with flat panel screen
B / 5.5% / 8.3%
- 8528.10.29 ----Other
B / 5.5% / 8.3%
- Video monitors or video projectors combined in the same housing with video recording or reproducing apparatus (V.C.R.'s):
- 8528.10.31 ----Non-high definition, having a single picture tube intended for direct viewing (non-projection type), with a video display diagonal not exceeding 35.56 cm
B / 7.5% / 7.5%

- 8528.10.32 ----Non-high definition, having a single picture tube intended for direct viewing (non-projection type), with a video display diagonal exceeding 35.56 cm
B / 7.5% / 7.5%
- 8528.10.33 ----High definition non-projection type, with cathode ray tube
B / 7.5% / 7.5%
- 8528.10.34 ----Non-high definition projection type, with cathode ray tube
B / 7.5% / 7.5%
- 8528.10.35 ----High definition projection type, with cathode ray tube
B / 7.5% / 7.5%
- 8528.10.36 ----Other, with flat panel screen
B / 7.5% / 7.5%
- 8528.10.39 ----Other
B / 7.5% / 7.5%
- Television receivers:
- 8528.10.41 ----Non-high definition, having a single picture tube intended for direct viewing (non-projection type), with a video display diagonal not exceeding 35.56 cm
B / 7.5% / 7.5%
- 8528.10.42 ----Non-high definition, having a single picture tube intended for direct viewing (non-projection type), with a video display diagonal exceeding 35.56 cm
B / 7.5% / 7.5%
- 8528.10.43 ----High definition non-projection type, with cathode ray tube
B / 7.5% / 7.5%
- 8528.10.44 ----Non-high definition projection type, with cathode ray tube
B / 7.5% / 7.5%
- 8528.10.45 ----High definition projection type, with cathode ray tube
B / 7.5% / 7.5%

- 8528.10.46 ----Other, with flat panel screen
B / 7.5% / 7.5%
- 8528.10.49 ----Other
B / 7.5% / 7.5%
- Video monitors or video projectors:
- 8528.10.51 ----Non-high definition, having a single picture
tube intended for direct viewing (non-projection
type), with a video display diagonal not exceeding
35.56 cm
B / 7.5% / 7.5%
- 8528.10.52 ----Non-high definition, having a single picture
tube intended for direct viewing (non-projection
type), with a video display diagonal exceeding
35.56 cm
B / 7.5% / 7.5%
- 8528.10.53 ----High definition non-projection type, with
cathode ray tube
B / 7.5% / 7.5%
- 8528.10.54 ----Non-high definition projection type, with
cathode ray tube
B / 7.5% / 7.5%
- 8528.10.55 ----High definition projection type, with cathode
ray tube
B / 7.5% / 7.5%
- 8528.10.56 ----Other, with flat panel screen
B / 7.5% / 7.5%
- 8528.10.59 ----Other
B / 7.5% / 7.5%
- 8528.10.90 ----Other
B / 7.5% / 7.5%
34. 8529.90.11 Preamble to 8529.90.11 to 8529.90.14 should
delete the words "other than those of tariff
item No. 8529.90.31 or 8529.90.39".
- 8529.90.13 - Should add 8528.10.18 to the description.

8529.90.14 - Should read as follows:

----Of the goods of tariff item No. 8528.10.12, 8528.10.19, 8528.10.31, 8528.10.32, 8528.10.33, 8528.10.34, 8528.10.35, 8528.10.36, 8528.10.39, 8528.10.41, 8528.10.42, 8528.10.43, 8528.10.44, 8528.10.45, 8528.10.46, 8528.10.49, 8528.10.51, 8528.10.52, 8528.10.53, 8528.10.54, 8528.10.55, 8528.10.56, 8528.10.59, or 8528.10.90

8529.90.31 - Preamble to 8529.90.31 should read:

---Parts of television receivers (including video monitors and video projectors) specified in Supplementary Note 4 to this Chapter (other than goods of tariff item No. 8529.90.11, 8529.90.12, 8529.90.13 or 8529.90.14) :

8529.90.31 - Description should refer to Supplementary Note 4 not 2.

8529.90.32 - Addition of new item:

----Other combinations of parts specified in Supplementary Note 4. Staging Category is A and Column I and Column II Base Rates are 7.5%

8529.90.38 - Addition of new item: "Other, of television receivers". Staging Category is A and Column I and Column II Base Rates are 7.5%.

8529.90.51 - Preamble to 8529.90.51 should read: "Parts, including face plates and lock latches for printed circuit assemblies".

8529.90.53 - should add 8528.10.18 to the description.

8529.90.54 - should read as follows:

----Of the goods of tariff item No. 8528.10.12, 8528.10.19, 8528.10.31, 8528.10.32, 8528.10.33, 8528.10.34, 8528.10.35, 8528.10.36, 8528.10.39, 8528.10.41, 8528.10.42, 8528.10.43, 8528.10.44, 8528.10.45, 8528.10.46, 8528.10.49, 8528.10.51, 8528.10.52, 8528.10.53, 8528.10.54, 8528.10.55, 8528.10.56, 8528.10.59 or 8528.10.90

35. 9002.11.10 - Text should read: "For instant print cameras; for cameras making negatives or positives of a width exceeding 8 cm and a length exceeding 10.5 cm; for enlargers making negatives or positives of a width exceeding 10 cm and a length exceeding

12.5 cm; for colour television cameras; for use in the manufacture of projectors or photographic cameras".

36. 9005.90 - Tariff items 9005.90.10 and 9005.90.90 to be deleted and replaced by:

"Of the telescopes of tariff item No. 9005.80.10:
9005.90.11 ----Incorporating goods of heading No. 90.01 or
90.02
Free/Free/D
9005.90.19 ----Other
Free/Free/D
---Other:
9005.90.91 ----Incorporating goods of heading No. 90.01 or
90.02
4.5%/4.5%/A
9005.90.99 ----Other"
4.5%/4.5%/A

37. 9006.91.91 - Text should read: "Parts of instant-print cameras or of cameras for making negatives or positives of a width exceeding 8 cm and of a length exceeding 10.5 cm; parts of the goods of tariff item No. 9006.10.00".

38. 9006.99.10 - Text should read: "Parts of the goods of tariff item No. 9006.69.10".

39. 9008.90.11 - Text should read: "Of microfilm or microfiche reader-printers; of enlargers designed to accommodate negatives or positives of a width exceeding 10 cm and of a length exceeding 12.5 cm".

40. 9027.90.30 - Item to be deleted and replaced by:

---Printed circuit assemblies for the goods of subheading No. 9027.80:
9027.90.31 ----Of the goods of tariff item No. 9027.80.10
A/6.5%/6.5%
9027.90.32 ----Of the goods of tariff item No. 9027.80.20 or
9027.80.80
D/Free/Free
9027.90.33 ----Of the goods of tariff item No. 9027.80.90.
A/5%/5%

41. 9031.40 - Should read as follows:

9031.40	-Other optical instruments and appliances
9031.40.10	---Co-ordinate measuring machines
9031.40.90	---Other

Staging Category is A and Column I and Column II
Base Rates are 2.5% for both items.

Tariff item 9031.80.40 should be deleted.

9031.90.40 - Deletion of 9031.40.00 from the description and
addition of 9031.40.90.

9031.90.61 and 9031.90.69 - Preamble to these items to read "Of
the goods of tariff item No. 9031.40.10" :

42. 9820.00.00 - Staging Category should indicate "A".

SUPPLEMENTARY NOTES

CHAPTER 84

1. For purposes of this Chapter, the term, "printed circuit assembly", means a good consisting of one or more printed circuits of heading No. 85.34 with one or more active elements assembled thereon, with or without passive elements. For purposes of this Note, "active elements" means diodes, transistors and similar semiconductor devices, whether or not photosensitive, of heading No. 85.41, and integrated circuits and microassemblies of heading No. 85.42.
2. Tariff item No. 8473.30.10 covers the following parts for printers of subheading No. 8471.92:
 - (a) control or command assemblies, incorporating more than one of the following: printed circuit assembly; hard or flexible (floppy) disc drive; keyboard; user interface;
 - (b) light source assemblies, incorporating more than one of the following: light emitting diode assembly; gas laser, mirror polygon assembly; base casting;
 - (c) laser imaging assemblies, incorporating more than one of the following: photoreceptor belt or cylinder; toner receptacle unit; toner developing unit; charge/discharge unit; cleaning unit;
 - (d) image fixing assemblies; incorporating more than one of the following: fuser, pressure roller, heating element; release oil dispenser, cleaning unit; electrical control;
 - (e) ink jet marking assemblies, incorporating more than one of the following: thermal print head; ink dispensing unit; nozzle and reservoir unit; ink heater;
 - (f) maintenance/sealing assemblies, incorporating more than one of the following: vacuum unit; ink jet covering unit; sealing unit; purging unit;
 - (g) paper handling assemblies, incorporating more than one of the following; paper transport belt; roller, print bar; carriage, gripper roller; paper storage unit; exit tray;
 - (h) thermal transfer imaging assemblies, incorporating more than one of the following; thermal print head; cleaning unit; supply or take-up roller;

- (i) inonographic imaging assemblies; incorporating more than one of the following; ion generation and emitting unit; air assist unit; printed circuit assembly; charge receptor belt or cylinder; toner receptacle unit; toner distribution unit; developer receptacle and distribution unit; developing unit; charge/discharge unit; cleaning unit; or
- (j) combinations of the above specified assemblies.

CHAPTER 85

1. For purposes of this Chapter, the term, "printed circuit assembly", means a good consisting of one or more printed circuits of heading No. 85.34 with one or more active elements assembled thereon, with or without passive elements. For purposes of this Note, "active elements" means diodes, transistors and similar semiconductor devices, whether or not photosensitive, of heading No. 85.41, and integrated circuits and microassemblies of heading No. 85.42.
2. Tariff item No. 8517.90.31 covers the following parts for facsimile machines:
 - (a) control or command assemblies, incorporating more than one of the following: optics lamp; charge couples device and appropriate optics; lenses; mirror;
 - (b) optics module assemblies, incorporating more than one of the following: optics lamp; charge couples device and appropriate optics; lenses; mirror;
 - (c) laser imaging assemblies, incorporating more than one of the following; photoreceptor belt or cylinder; toner receptacle unit; toner developing unit; charge/discharge unit; cleaning unit;
 - (d) ink jet marking assemblies, incorporating more than one of the following: thermal print head; ink dispensing unit; nozzle and reservoir unit; ink heater;
 - (e) thermal transfer imaging assemblies, incorporating more than one of the following: thermal print head; cleaning unit; supply or take-up roller;

- (f) ionographic imaging assemblies, incorporating more than one of the following; ion generation and emitting unit; air assist unit; printed circuit assembly; charge receptor belt or cylinder; toner receptacle unit; toner distribution unit; developer receptacle and distribution unit; developing unit; charge/discharge unit; cleaning unit;
- (g) image fixing assemblies; incorporating more than one of the following: fuser, pressure roller, heating element; release oil dispenser, cleaning unit; electrical control;
- (h) paper handling assemblies, incorporating more than one of the following: paper transport belt; roller; print bar; carriage; griper roller, paper storage unit; exit tray; or
- (i) combinations of the above specified assemblies.

For purposes of this Chapter:

- (a) references to "high definition" as it applies to television receivers and cathode-ray tubes refers to goods having
 - (i) an aspect ratio of the screen equal to or greater than 16:9, and
 - (ii) a viewing screen capable of displaying more than 700 scanning lines; and
 - (b) the video display diagonal is determined by measuring the maximum straight line dimension across the visible portion of the face plate used for displaying video.
4. Tariff item No. 8529.90.38 or 8529.90.39 covers the following parts of television receivers (including video monitors and video projectors):
- (a) Video intermediate (1F) amplifying and detecting systems;
 - (b) Video processing and amplification systems;
 - (c) Synchronizing and deflection circuitry;
 - (d) Tuners and tuner control systems;
 - (e) Audio detection and amplification systems.

For purposes of tariff item No. 8540.91.10, the term "front panel assembly" refers to: (a) with respect to a colour cathode-ray television picture tube, an assembly which consists of a glass panel and a shadow mask or aperture grill, attached for ultimate use, which is suitable for incorporation into a colour cathode-ray television picture tube (including video monitor or video projector cathode-ray tube), and which has undergone the necessary chemical and physical processes for imprinting phosphors on the glass panel with sufficient precision to render a video image when excited by a stream of electrons; or (b) with respect to a monochrome cathode-ray picture tube, an assembly which consists of either a glass panel or a glass envelope, which is suitable for incorporation into a monochrome cathode-ray television picture tube (including video monitor or video projector cathode-ray tube), and which has undergone the necessary chemical and physical processes for imprinting phosphors on the glass panel or glass envelope with sufficient precision to render a video image when excited by a stream of electrons.

CHAPTER 90

1. For purposes of this Chapter, the term, "printed circuit assembly", means a good consisting of one or more printed circuits of heading No. 85.34 with one or more active elements assembled thereon, with or without passive elements. For purposes of this Note, "active elements" means diodes, transistors and similar semiconductor devices, whether or not photosensitive, of heading No. 85.41, and integrated circuits and microassemblies of heading No. 85.42.
2. Tariff item No. 9009.90.10 covers the following parts for photo-copying apparatus of subheading No. 9009.12:
 - (a) imaging assemblies, incorporating more than one of the following: photoreceptor belt or cylinder; toner receptacle unit; toner distribution unit; developer receptacle unit; developer distribution unit; charge/discharge unit; cleaning unit;
 - (b) optics assemblies, incorporating more than one of the following: lens; mirror, illumination source; document exposure glass;

- (c) user control assemblies, incorporating more than one of the following: printed circuit assembly; power supply; user input keyboard; wiring harness; display unit (cathode-ray type or flat panel;
 - (d) image fixing assemblies, incorporating more than one of the following: fuser, pressure roller, heating element; release oil dispenser; cleaning unit; electrical control;
 - (e) paper handling assemblies, incorporating more than one of the following; paper transport belt; roller, print bar; carriage, gripper roller; paper storage unit; exit tray; or
 - (f) combinations of the above specified assemblies.
3. For the purpose of the tariff items of this Chapter, the term "electrical" when used in reference to instruments, appliances, apparatus and machines, refers to those articles the operation of which depends on an electrical phenomenon which varies according to the factor to be determined.

LIBRARY E / BIBLIOTHEQUE A E



3 5036 20007287 7

DOCS
CA1 EA 92N56s ENG
Tariff schedule of Canada : errata
--
43268406



Government of Canada Gouvernement du Canada