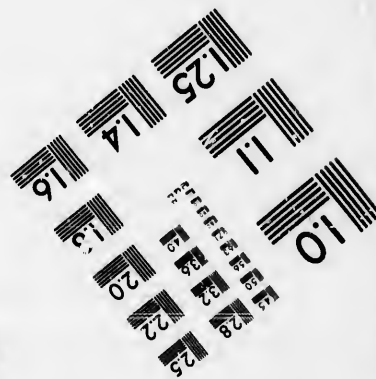
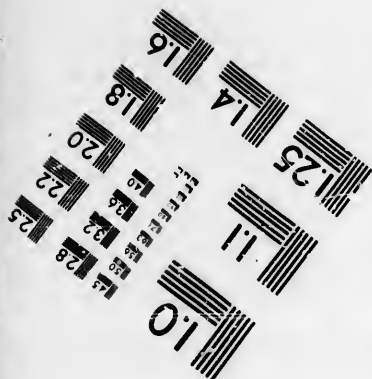
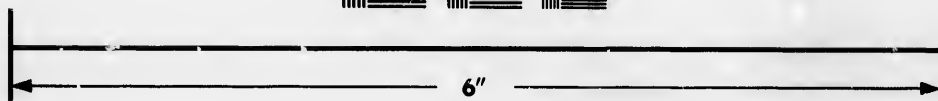
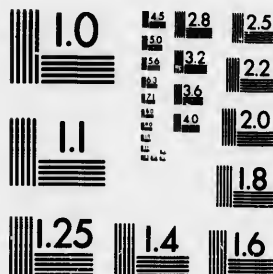


# IMAGE EVALUATION TEST TARGET (MT-3)



Photographic  
Sciences  
Corporation

23 WEST MAIN STREET  
WEBSTER, N.Y. 14580  
(716) 872-4503

**CIHM/ICMH  
Microfiche  
Series.**

**CIHM/ICMH  
Collection de  
microfiches.**



Canadian Institute for Historical Microreproductions / Institut canadien de microreproductions historiques

**© 1986**

# Technical and Bibliographic Notes/Notes techniques et bibliographiques

The Institute has attempted to obtain the best original copy available for filming. Features of this copy which may be bibliographically unique, which may alter any of the images in the reproduction, or which may significantly change the usual method of filming, are checked below.

L'Institut a microfilmé le meilleur exemplaire qu'il lui a été possible de se procurer. Les détails de cet exemplaire qui sont peut-être uniques du point de vue bibliographique, qui peuvent modifier une image reproduite, ou qui peuvent exiger une modification dans la méthode normale de filmage sont indiqués ci-dessous.

- ☐ Coloured covers/  
Couverture de couleur
- ☐ Covers damaged/  
Couverture endommagée
- ☐ Covers restored and/or laminated/  
Couverture restaurée et/ou peillculée
- ☐ Cover title missing/  
Le titre de couverture manque
- ☐ Coloured maps/  
Cartes géographiques en couleur
- ☐ Coloured ink (i.e. other than blue or black)/  
Encre de couleur (i.e. autre que bleue ou noire)
- ☐ Coloured plates and/or illustrations/  
Planches et/ou illustrations en couleur
- ☐ Bound with other material/  
Relié avec d'autres documents
- ☐ Tight binding may cause shadows or distortion along interior margin/  
Le liure serrée peut causer de l'ombre ou de la distorsion le long de la marge intérieure
- ☐ Blank leaves added during restoration may appear within the text. Whenever possible, these have been omitted from filming/  
il se peut que certaines pages blanches ajoutées lors d'une restauration apparaissent dans le texte, mais, lorsque cela était possible, ces pages n'ont pas été filmées.

- ☐ Coloured pages/  
Pages de couleur
- ☐ Pages damaged/  
Pages endommagées
- ☐ Pages restored and/or laminated/  
Pages restaurées et/ou pelliculées
- ☒ Pages discoloured, stained or foxed/  
Pages décolorées, tachetées ou piquées
- ☐ Pages detached/  
Pages détachées
- ☒ Showthrough/  
Transparence
- ☐ Quality of print varies/  
Qualité inégale de l'impression
- ☐ Includes supplementary material/  
Comprend du matériel supplémentaire
- ☐ Only edition available/  
Seule édition disponible
- ☐ Pages wholly or partially obscured by errata slips, tissues, etc., have been refilmed to ensure the best possible image/  
Les pages totalement ou partiellement obscurcies par un feuillet d'errata, une pelure, etc., ont été filmées à nouveau de façon à obtenir la meilleure image possible.

☒ Additional comments: [Printed ephemera] 4 p.  
Commentaires supplémentaires:

This item is filmed at the reduction ratio checked below/  
Ce document est filmé au taux de réduction indiqué ci-dessous.

10X	14X	18X	22X	26X	30X
<input type="checkbox"/>	<input type="checkbox"/>	<input type="checkbox"/>	<input checked="" type="checkbox"/>	<input type="checkbox"/>	<input type="checkbox"/>
<input type="checkbox"/>	<input type="checkbox"/>	<input type="checkbox"/>	<input type="checkbox"/>	<input type="checkbox"/>	<input type="checkbox"/>
12X	16X	20X	24X	28X	32X

The copy filmed here has been reproduced thanks to the generosity of:

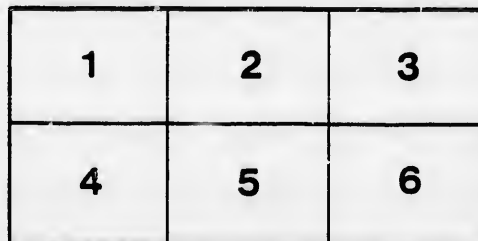
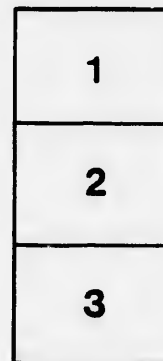
D. B. Weldon Library  
University of Western Ontario  
(Regional History Room)

The images appearing here are the best quality possible considering the condition and legibility of the original copy and in keeping with the filming contract specifications.

Original copies in printed paper covers are filmed beginning with the front cover and ending on the last page with a printed or illustrated impression, or the back cover when appropriate. All other original copies are filmed beginning on the first page with a printed or illustrated impression, and ending on the last page with a printed or illustrated impression.

The last recorded frame on each microfiche shall contain the symbol  $\longrightarrow$  (meaning "CONTINUED"), or the symbol  $\nabla$  (meaning "END"), whichever applies.

Maps, plates, charts, etc., may be filmed at different reduction ratios. Those too large to be entirely included in one exposure are filmed beginning in the upper left hand corner, left to right and top to bottom, as many frames as required. The following diagrams illustrate the method:



L'exemplaire filmé fut reproduit grâce à la générosité de:

D. B. Weldon Library  
University of Western Ontario  
(Regional History Room)

Les images suivantes ont été reproduites avec le plus grand soin, compte tenu de la condition et de la netteté de l'exemplaire filmé, et en conformité avec les conditions du contrat de filmage.

Les exemplaires originaux dont la couverture en papier est imprimée sont filmés en commençant par le premier plat et en terminant soit par la dernière page qui comporte une empreinte d'impression ou d'illustration, soit par le second plat, selon le cas. Tous les autres exemplaires originaux sont filmés en commençant par la première page qui comporte une empreinte d'impression ou d'illustration et en terminant par la dernière page qui comporte une telle empreinte.

Un des symboles suivants apparaîtra sur la dernière image de chaque microfiche, selon le cas: le symbole  $\longrightarrow$  signifie "A SUIVRE", le symbole  $\nabla$  signifie "FIN".

Les cartes, planches, tableaux, etc., peuvent être filmés à des taux de réduction différents. Lorsque le document est trop grand pour être reproduit en un seul cliché, il est filmé à partir de l'angle supérieur gauche, de gauche à droite, et de haut en bas, en prenant le nombre d'images nécessaire. Les diagrammes suivants illustrent la méthode.

errata  
to

pelure,  
on à



32X

# DOMINION GRANGE, PATRONS OF HUSBANDRY.

---

## SECRETARY'S OFFICE.

FONTHILL, JULY 16th, 1878.

The following resolutions and business, are extracts from the proceedings of the Executive Committee at their last meeting, commencing June 26th.

Members all present.

The Secretary laid before the meeting the propriety of erecting a tent on the Provincial Exhibition Grounds, Toronto, to be used for the convenience of members visiting the exhibition.

*Resolved*, that Brother A. J. Hughes, be a special committee (with power to ask the assistance of any other member he may wish) to secure a Tent, and place it upon the Provincial Exhibition Grounds, Toronto, for the use of members of the Grange, also to confer with some one in regard to supplying refreshments in connection with the encampment, also to engage hotel accommodation in the city. And the Secretary is instructed to notify all Granges by circular to the above effect and invite all those attending the Exhibition, to visit the encampment.

We have taken this action, thinking it would meet the hearty approval of our members, furnish a means of social entertainment while attending the exhibition, and an opportunity of forming the acquaintance of many whom we might not otherwise meet. Also by arranging for refreshments and hotel accommodation secure suitable fare at reasonable rates to those of our members in attendance. Further notice will be given when arrangements are completed.

## Dominion Grange Trust.

### Amendments and Additions to "Prospectus."

Additional clause. "*Resolved*, that the Stock Books be kept open for the reception of subscriptions of members of the Grange *exclusively*, until the 1st day of October next, and that \$2,000, (two thousand dollars) be the maximum amount of subscriptions received from any one person, until the expiration of said term. If the full amount of stock be not then taken up subscriptions may be taken from any one member to the amount of \$10,000, (ten thousand dollars), that the Secretary be instructed to forward a copy of this resolution, forthwith, to all Subordinate Granges, with such remarks and explanations as he may deem necessary."

*Resolved*, "That the four last words in clause, relating to *calls*, (after the first year) be struck out of Prospectus."

The above alterations and amendments were deemed necessary in the interest of the company.

While urging our members to be active in taking up stock, that we may be able to open business as soon as possible, yet we desire to give all a chance to avail themselves of the opportunity, and hence have fixed the amount to be taken by any one member at \$2,000, (40 shares) and will extend the time for this to October 1st, after that time if the stock is not raised, we propose to allow a larger sum of \$10,000 taken if desired, in order to raise the required stock.

We have also, as will be seen, made alteration in clause relating to calls by which only ten per cent. will be called in any one year, the first year being restricted to one call, the same as provided for other years.

I may also say for the general information of members, that the first call on their subscribed stock will not be made until sufficient stock is subscribed to commence business, which will not likely be until Fall, after crops are harvested and sold, thus giving those who subscribe a chance to pay in their ten per cent. without inconvenience to themselves.

Considerable stock has already been subscribed, and very encouraging accounts are given of the probable taking up of all the capital in a short time. I would therefore recommend all contemplating taking stock (and we would gladly have every member become interested in it by subscribing for one or more shares) to do so at once, rather than to defer it for regret afterwards, as stock in the company will undoubtedly be good property; a safe way of investing money that will return a profitable dividend.

As there are yet some Divisions which have not any persons taking stock in them, I will ask them to recommend some one or more members for this duty immediately, and their appointment will be made, so that no one will be deprived of the opportunity of subscribing for stock, and taking part in the benefits of this enterprise.

## Excursion to Lake Superior.

As many of our members are desirous of visiting Manitoulin Island and the North-west Territories, we have arranged for a cheap excursion by boat to these places. Boats will leave Collingwood on the 27th, and also the 30th, of August. (Those who cannot go on the 27th will have an opportunity on the 30th.) We hope to make this a very pleasant trip. The scenery on the route is said to be beautiful beyond description, and as there are many wishing to see for themselves that part of our country so much talked of, this will afford them an opportunity to do so at a small expense compared with the usual rates.

The following table has been prepared showing the rates of fare from different points and return. Passengers can either carry their own provisions or board on the boat at \$1 per day. Arrangements will be made at different stopping places, such as Manitoulin Islands, Sault St. Marie, St. Joseph's Island, &c., for accommodation at reasonable rates to those wishing to stop over at these places until the return of the boat.

### Special Rates for Grange Excursion.

**TABLE of Through Rates to Sault St. Marie, Manitoulin Island, St. Joseph's Island, and Thunder Bay and Return.**

[The G. W. R. R. and G. T. R. R. will give reduced fares to Toronto.]

*N. R. R. CO.*

	MANITOU- LIN.	ST. JOS. AND SAULT ST. MARIE.	THUNDER BAY, PR. ARTHUR'S LANDING, &C.
Toronto	\$6.00	\$8.00	\$16.00
Thornhill	5.40	7.40	15.40
King	5.00	7.00	15.00
Aurora	5.00	7.00	15.00
Newmarket	4.75	6.75	14.75
Holland Landing	4.70	6.70	14.75
Bradford	4.50	6.50	14.50
Lefroy	4.25	6.25	14.25
Allandale and Barrie	4.00	6.00	14.00
Angus	3.75	5.75	13.75
New Lowell	3.50	5.50	13.50
Stayner	3.25	5.25	13.25
Thornbury	3.40	5.40	13.40
Meaford, Collingwood } and Owen Sound }	3.00	5.00	13.00
Orillia	4.50	6.50	14.50
Washago and Severn	5.00	7.00	15.00
Gravenhurst	5.25	7.25	15.25

---

*T. G. & B. R. R.*

Toronto and all stations to Kleinburg inclusive	6.00	8.00	16.00
Bolton and all stations to Alton inclusive	5.00	7.00	15.00
Orangeville & all st'ns to Shelbourne not inclusive	4.00	6.00	14.00
Shelbourne and Dundalk	3.75	5.75	13.75
Flesherton and Markdale	3.50	5.50	13.50
Williamsford & Chatsworth	3.25	5.25	13.25
Teeswater and all stations to Orangeville	5.00	7.00	15.00

Tickets for the trip can be procured at the above rates, at all stations mentioned, and as only a limited number of passengers will be taken on each boat, (that there may be no crowding). Secretaries will please send in to some member of the committee by the 10th of August the probable number going from their Grange; if it is found there are more than will comfortably fill one boat, another will also be put on the route, but to do this we must know something of the numbers by at least August 10th. Good Music will be furnished to enliven the occasion.

I find through Quarterly Reports and otherwise, that our business operations are growing rapidly resulting in much advantage, financially, to us. It being an important feature in our work, I feel it my duty in the position I hold, to lend every assistance in my power to advance this interest. Members having produce to sell, or wishing to purchase goods of any kind, farming implements, etc., by letting their wants be known, I will be pleased at any and all times to give what information I can, advising them as to the most reliable firms with whom to deal, and assist in supplying their needs to the best advantage.

Six hundred and ninety-three Subordinate Granges and forty-six Division Granges to date.

*W. Greenhalgh Page*



