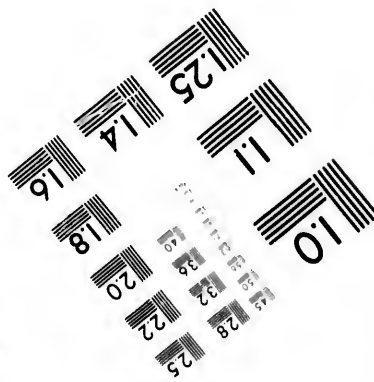
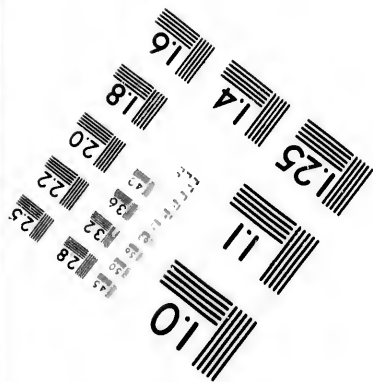
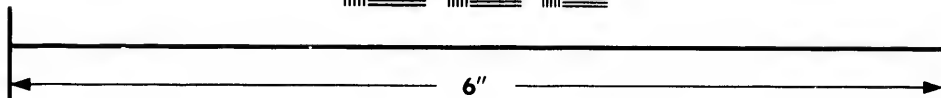
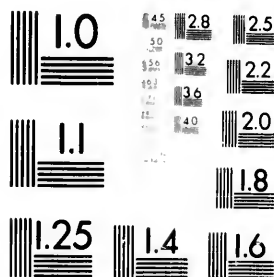
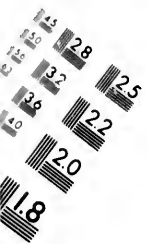


**IMAGE EVALUATION
TEST TARGET (MT-3)**



**Photographic
Sciences
Corporation**

23 WEST MAIN STREET
WEBSTER, N.Y. 14580
(716) 872-4503



**CIHM/ICMH
Microfiche
Series.**

**CIHM/ICMH
Collection de
microfiches.**



Canadian Institute for Historical Microreproductions / Institut canadien de microreproductions historiques

© 1981



Technical and Bibliographic Notes/Notes techniques et bibliographiques

The Institute has attempted to obtain the best original copy available for filming. Features of this copy which may be bibliographically unique, which may alter any of the images in the reproduction, or which may significantly change the usual method of filming, are checked below.

L'Institut a microfilmé le meilleur exemplaire qu'il lui a été possible de se procurer. Les détails de cet exemplaire qui sont peut-être uniques du point de vue bibliographique, qui peuvent modifier une image reproduite, ou qui peuvent exiger une modification dans la méthode normale de filmage sont indiqués ci-dessous.

- Coloured covers/
Couverture de couleur
- Covers damaged/
Couverture endommagée
- Covers restored and/or laminated/
Couverture restaurée et/ou pelliculée
- Cover title missing/
Le titre de couverture manque
- Coloured maps/
Cartes géographiques en couleur
- Coloured ink (i.e. other than blue or black)/
Encre de couleur (i.e. autre que bleue ou noire)
- Coloured plates and/or illustrations/
Planches et/ou illustrations en couleur
- Bound with other material/
Relié avec d'autres documents
- Tight binding may cause shadows or distortion
along interior margin/
La reliure serrée peut causer de l'ombre ou de la
distortion le long de la marge intérieure
- Blank leaves added during restoration may
appear within the text. Whenever possible, these
have been omitted from filming/
Il se peut que certaines pages blanches ajoutées
lors d'une restauration apparaissent dans le texte,
mais, lorsque cela était possible, ces pages n'ont
pas été filmées.
- Additional comments:/
Commentaires supplémentaires:

- Coloured pages/
Pages de couleur
- Pages damaged/
Pages endommagées
- Pages restored and/or laminated/
Pages restaurées et/ou pelliculées
- Pages discoloured, stained or foxed/
Pages décolorées, tachetées ou piquées
- Pages detached/
Pages détachées
- Showthrough/
Transparence
- Quality of print varies/
Qualité inégale de l'impression
- Includes supplementary material/
Comprend du matériel supplémentaire
- Only edition available/
Seule édition disponible
- Pages wholly or partially obscured by errata
slips, tissues, etc., have been refilmed to
ensure the best possible image/
Les pages totalement ou partiellement
obscurcies par un feuillet d'errata, une pelure,
etc., ont été filmées à nouveau de façon à
obtenir la meilleure image possible.

This item is filmed at the reduction ratio checked below/
Ce document est filmé au taux de réduction indiqué ci-dessous.

10X	14X	18X	22X	26X	30X
<input type="checkbox"/>	<input type="checkbox"/>	<input type="checkbox"/>	<input checked="" type="checkbox"/>	<input type="checkbox"/>	<input type="checkbox"/>
12X	16X	20X	24X	28X	32X

The copy filmed here has been reproduced thanks to the generosity of:

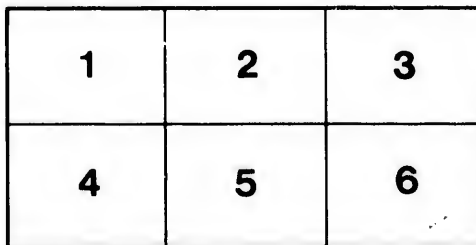
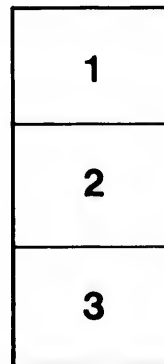
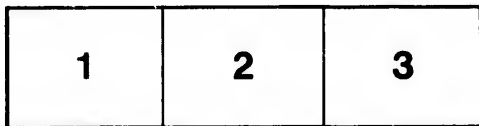
Library of the Public
Archives of Canada

The images appearing here are the best quality possible considering the condition and legibility of the original copy and in keeping with the filming contract specifications.

Original copies in printed paper covers are filmed beginning with the front cover and ending on the last page with a printed or illustrated impression, or the back cover when appropriate. All other original copies are filmed beginning on the first page with a printed or illustrated impression, and ending on the last page with a printed or illustrated impression.

The last recorded frame on each microfiche shall contain the symbol \rightarrow (meaning "CONTINUED"), or the symbol ∇ (meaning "END"), whichever applies.

Maps, plates, charts, etc., may be filmed at different reduction ratios. Those too large to be entirely included in one exposure are filmed beginning in the upper left hand corner, left to right and top to bottom, as many frames as required. The following diagrams illustrate the method:



L'exemplaire filmé fut reproduit grâce à la générosité de:

La bibliothèque des Archives
publiques du Canada

Les images suivantes ont été reproduites avec le plus grand soin, compte tenu de la condition et de la netteté de l'exemplaire filmé, et en conformité avec les conditions du contrat de filmage.

Les exemplaires originaux dont la couverture en papier est imprimée sont filmés en commençant par le premier plat et en terminant soit par la dernière page qui comporte une empreinte d'impression ou d'illustration, soit par le second plat, selon le cas. Tous les autres exemplaires originaux sont filmés en commençant par la première page qui comporte une empreinte d'impression ou d'illustration et en terminant par la dernière page qui comporte une telle empreinte.

Un des symboles suivants apparaîtra sur la dernière image de chaque microfiche, selon le cas: le symbole \rightarrow signifie "A SUIVRE", le symbole ∇ signifie "FIN".

Les cartes, planches, tableaux, etc., peuvent être filmés à des taux de réduction différents. Lorsque le document est trop grand pour être reproduit en un seul cliché, il est filmé à partir de l'angle supérieur gauche, de gauche à droite, et de haut en bas, en prenant le nombre d'images nécessaire. Les diagrammes suivants illustrent la méthode.

rrrata
to

pelure,
n à



THESE Jettons were first prominently brought to the notice of collectors by the descriptions and cuts that appeared in the *Journal de Numismatique*. Since then the interest manifested in them has increased, and new varieties have been brought to light.

The description of the Coins under the old Regieme in Catalogue is well known. Now the number according to a list published by another by Mr. E. Froissard in *Numisma*, amounts to 1751.

Believing that more may be in existence, I have examined the lists and submit for your correction the list given below. The Jettons in your collection will you kindly compare the rubbings of specimens not described and those showing the same. I will publish a more perfect description of the Jettons in a series of "Notes on Numismatics" appearing in the *American Journal of Numismatics*.

Jettons marked with an X are in my own Collection. Those marked with a dot are in the other Catalogue as follows: "X" for Mr. Weyl, and "F" for Mr. Froissard.

1751.

X 1. *Obv.*—LUD. XV. REX CHRISTIANISS. Laureated bust to left with ribbon over shoulder, eleven laurel leaves on the right. *Rev.*—SUB OMNI SIDERE CRESCUNT. *Ex.*—COL. FRANC. Bust to right with bow and quiver looking back towards distance. A1. W14. F3.

X 2. *Obv.*—As last but with seventeen leaves on the right. *Rev.*—As last but with alligator coming out of the water in front of bust.

X 3. *Obv.*—As No. 1 but with seven fleur-de-lis on the right. *Rev.*—As last. W18. F4.

X 4. *Obv.*—Inscription as in No. 1. Bust to right in civic dress. *Rev.*—DU VIVIER. *Rev.*—Same as No. 2. F1.

1752.

20-5 *Obv.*—Same inscription. Bust in civic dress to left with ribbon over the shoulder. B. DUVIV. *Rev.*—COL. FRANC. DE L'AM. 1752 Mercury with scepter. On the left is the shore with buildings and a ship.

X 6. *Obv.*—Same as No. 4. *Rev.*—Same as No. 5. F1.

X 7. *Obv.*—PROTEGIT ET PASCIT *Ex.*—1752. Arms of France. *Rev.*—of a palm tree; crest a coronet, supporters two Indians. *Rev.*—to right D. V. *Rev.*—Same as No. 5. W19. F2.

10—7*

1753

20-8 *Obv.*—Same inscription as on No. 1. Diademed bust to left. *Rev.*—SATIS UNUS UTRIQUE. *Ex.*—of a globe shining over two hemispheres on which are inscribed "FRANCIA" and "AMERICA". A3. F9.

AMERICAN COLONIAL JETTONS.

prominently brought before Canadian and American Collections and cuts that appeared in the Fonrobert Collection. manifested in them has continued to increase, and many brought to light. When Professor Anthon's list and my old Regime in Canada appeared only ten varieties were brought to a list published by Mr. Adolph Weyl in Berlin, and *numisma*, amounts to twenty seven.

In existence, I have carefully gone over all the published the list given below. Should you have any of these kindly compare them minutely with this list, and send me and those showing points of difference. My object is to of the Jettons in a supplement to my articles on "Canadian *American Journal of Numismatics*.

in my own Collection. References are made to descriptive Catalogue as follows: "A" for Professor Anthon, "W" for d.

1751.

ANISS. Laureated bust in armour to the right with broad laurel leaves on the breastplate, D.V. under the arm. *Rev.*—*Ex.*—COL. FRANC. DE | LAM. 1751. An Indian to the king back towards a group of seven lilies; two trees in the

seven leaves on the breast-plate *Rev.*—As last but has an crater in front of the Indian W16. F2.

in fleur-de-lis on the breast-plate. *Rev.*—Same as No. 2.

bust to right in civic dress. Locks flowing over the shoulders No. 2. F1.

1752.

in civic dress to the right with long hair tied behind Broad B. DUVIV. *Rev.*—UTRIQUE FACIT COMMERCIA MUNDO 1752 Mercury with *Caduceus* flying to the left over the with buildings and the letters C.N.R. A2. F6.

—Same as No. 5. F5.

Ex.—1752. Arms of the French Indian Company consisting supporters two Indians with clubs. Under the Indian's foot as No. 5. W19. F7.

1753

No. 1 Diademed head to the right under it *J. C. R* in UTRIQUE. *Ex.*—COL. FRANC. DE | LAM. 1753. The sun on which are inscribed the names of the continents, etc.

*see the above in
annex*

- x 9. *Obv.*—Same inscription. Head to the right with
under the head. *FM* in monogram. *Rev.*—Same
- x 10. *Obv.*—Same inscription. Bust in a lions skin,
Rev.—Same as No. 8. W23. F8.
- x 11. *Obv.*—Same as No. 4. *Rev.*—Same as No. 8.
10 — 118' 1754.
- x 12. *Obv.*—Same inscription. Laureated bust in a
under the bust. *Rev.*—NON INFERIORA METALLA
To the right three beavers are at work on the bank
of the river are a number of plants, probably Indian
groundwork, C.N.R. W25. A4. F14.
- x 13. *Obv.*—Same inscription. Bust in armour, to the
ermine over the bust and left shoulder. *Rev.*—S
- 15 — 14. *Obv.*—Same inscription. Laureated head, to the
Rev.—Same as N. 12. A4x. F18.
- x 15. *Obv.*—Same as No. 10. *Rev.*—Same as No. 12.
- x 16. *Obv.*—Same as No. 2. *Rev.*—Same as No. 12.
- x 17. *Obv.*—Same as No. 3. *Rev.*—Same as No. 12.
- x 18. *Obv.*—Same as No. 4. *Rev.*—Same as No. 12.
1755.
- x 19. *Obv.*—Same as No. 10. *Rev.*—NON VILLIUS
1755. A galley with twelve oars, to the right;
mast. A5x. W30. F19.
- 15 — 20. *Obv.*—Same as No. 12. *Rev.*—Same as No. 19.
- x 21. *Obv.*—Same as No. 9. *Rev.*—Same as No. 19.
- ~~x 22. *Obv.*—Same as No. 3. *Rev.*—Same as No. 19.~~
- x 23. *Obv.*—Same as No. 4. *Rev.*—Same as No. 19.
15 — 1756.
- 30 — 24. *Obv.*—Same inscription. Laureated head, to the
under the head. *Rev.*—SEDEM NON ANIMUM MONTREALIUM
1756. A swarm of bees passing from one hive to the other.
1757.
- 27 — 25. *Obv.*—Same as No. 13. *Rev.*—PARAT ULTIMA
| DE L'AMERIQUE | 1757. Mars with a shield on his chest,
France, and Neptune with his trident floating in the sea.
A7. F24.
1758.
- 20 — 26. *Obv.*—Same inscription. Laureated bust, with
bust. B. DUVIV. *Rev.*—EADEM FRANS ÆQUORA
1758. A number of eagles flying across the sky above the
Building on the the other shore in the distance.
- x 27. *Obv.*—Same as No. 3. *Rev.*—Same as No. 26.
- x 28. *Obv.*—Same as No. 4. *Rev.*—Same as No. 26.
- x 29 *Obv.* Same as No 24 *Rev.* same as 26
- x 30 " " " " 14 " " " 26

Head to the right with a ribbon over the top and tied behind monogram. *Rev.*—Same as No. 8. W21. F10.

Bust, in a lions skin, with hair tied behind, *fm* in monogram. V23. F8.

Rev.—Same as No. 8. F8.

1754.

11x the same as
Rev. " "

Laureated bust in armour to the right. *fm* in monogram, ON INFERIORA METALLIS *Ex.*—COL. FRANC. DE | L'AM. 1754.

are at work on the bank of a small stream. On the other side of plants, probably Indian corn, growing. Underneath, on the

A4 F14.

Bust in armour, to the right, hair tied behind. A band of left shoulder. *Rev.*—Same as No. 12. W26. F15.

Laureated head, to the right. Under the head, B. DUVIV. F. 4x. F18.

Rev.—Same as No. 12. W24. F13.

Rev.—Same as No. 12. W29. F17.

Rev.—Same as No. 12. W27. F16.

Rev.—Same as No. 12. F12.

1755.

Rev.—NON VILLIUS AUREO. *Ex.*—COL. FRANC. DE | LAM. ve oak, to the right; the golden fleece hanging from the

~~Rev. same as No. 12~~
B. DUVIV. F. 4x
Rev. same as

Rev.—Same as No. 19. A5.

Rev.—Same as No. 19. W32. F22.

~~*Rev.*—Same as No. 19. F21.~~

Rev.—Same as No. 19. F20.

1756.

x 23 ans
Rev same 19

Laureated head, to the right, with flowing hair. *R. filius un-* EDEM NON ANIMUM MUTANT. *Ex.*—COL. FRANC. DE | L'AM, passing from one hive to another. A6. F23.

1757.

Rev.—PARAT ULTIMA TERRA TRIUMPHOS. *Ex.*—COL. FRANC.

Mars with a shield, on which are emblazoned the lilies of h his trident floating on a shell towards the shore on the left.

1758.

25x Bust in toga R. Fil
Rev same as last

Laureated bust, with long hair tied behind. Under the ADEM TRANS ÆQUORA VIRTUS. *Ex.*—COL. FRANC. DE | LAM,

gles flying across the sea towards a rocky shore on the left. shore in the distance. A8. W36. F27.

Rev.—Same as No. 26. W34. F26.

Rev.—Same as No. 26. F25.

Rev same as 26
" " " 26

R. W. McLACHLAN.



