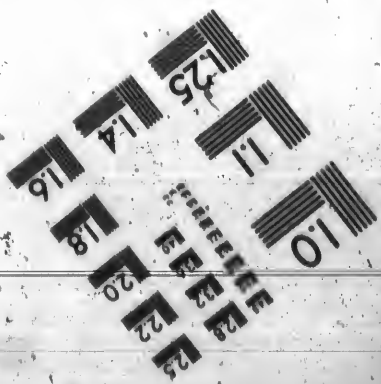
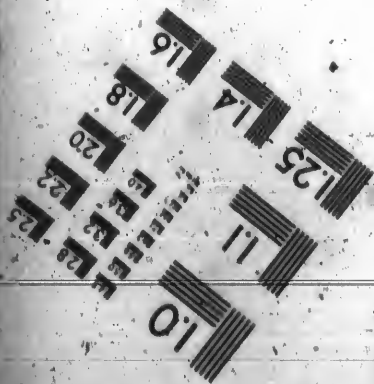
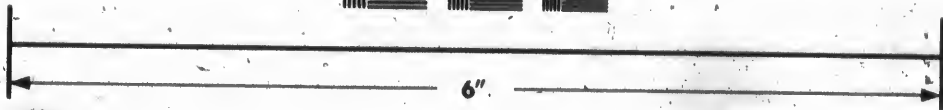
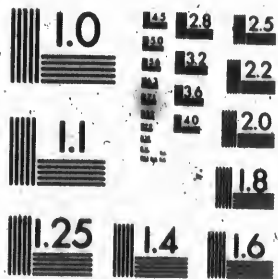


**IMAGE EVALUATION
TEST TARGET (MT-3)**



**Photographic
Sciences
Corporation**

23 WEST MAIN STREET
WEBSTER, N.Y. 14590
(716) 872-4503

15 28 25
32
36 22
20
18

**CIHM
Microfiche
Series
(Monographs)**

**ICMH
Collection de
microfiches
(monographies)**



Canadian Institute for Historical Microreproductions / Institut canadien de microreproductions historiques

10

© 1993

Technical and Bibliographic Notes / Notes techniques et bibliographiques

The Institute has attempted to obtain the best original copy available for filming. Features of this copy which may be bibliographically unique, which may alter any of the images in the reproduction, or which may significantly change the usual method of filming, are checked below.

L'Institut a microfilmé le meilleur exemplaire qu'il lui a été possible de se procurer. Les détails de cet exemplaire qui sont peut-être uniques du point de vue bibliographique, qui peuvent modifier une image reproduite, ou qui peuvent exiger une modification dans la méthode normale de filmage sont indiqués ci-dessous.

Coloured covers/
Couverture de couleur

Coloured pages/
Pages de couleur

Covers damaged/
Couverture endommagée

Pages damaged/
Pages endommagées

Covers restored and/or laminated/
Couverture restaurée et/ou pelliculée

Pages restored and/or laminated/
Pages restaurées et/ou pelliculées

Cover title missing/
Le titre de couverture manque

Pages discoloured, stained or foxed/
Pages décolorées, tachetées ou piquées

Coloured maps/
Cartes géographiques en couleur

Pages detached/
Pages détachées

Coloured ink (i.e. other than blue or black)/
Encre de couleur (i.e. autre que bleue ou noire)

Showthrough/
Transparence

Coloured plates and/or illustrations/
Planches et/ou illustrations en couleur

Quality of print varies/
Qualité inégale de l'impression

Bound with other material/
Relié avec d'autres documents

Continuous pagination/
Pagination continue

Tight binding may cause shadows or distortion along interior margin/
La reliure serrée peut causer de l'ombre ou de la distorsion le long de la marge intérieure

Includes index(es)/
Comprend un (des) index

Blank leaves added during restoration may appear within the text. Whenever possible, these have been omitted from filming/
Il se peut que certaines pages blanches ajoutées lors d'une restauration apparaissent dans le texte, mais, lorsque cela était possible, ces pages n'ont pas été filmées.

Title on header taken from:/
Le titre de l'en-tête provient:

Title page of issue/
Page de titre de la livraison

Caption of issue/
Titre de départ de la livraison

Masthead/
Générique (périodiques) de la livraison

Additional comments:/
Commentaires supplémentaires:

This item is filmed at the reduction ratio checked below/
Ce document est filmé au taux de réduction indiqué ci-dessous.

10x	14x	18x	22x	26x	30x
12x	16x	20x	24x	28x	32x

The copy filmed here has been reproduced thanks to the generosity of:

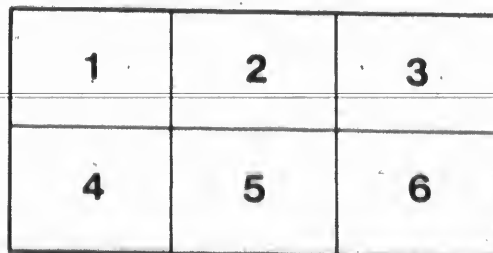
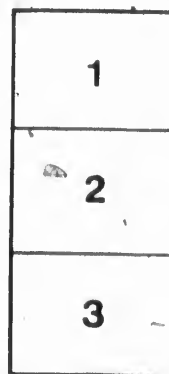
University of Victoria
McPherson Library

The images appearing here are the best quality possible considering the condition and legibility of the original copy and in keeping with the filming contract specifications.

Original copies in printed paper covers are filmed beginning with the front cover and ending on the last page with a printed or illustrated impression, or the back cover when appropriate. All other original copies are filmed beginning on the first page with a printed or illustrated impression, and ending on the last page with a printed or illustrated impression.

The last recorded frame on each microfiche shall contain the symbol \rightarrow (meaning "CONTINUED"), or the symbol ∇ (meaning "END"), whichever applies.

Maps, plates, charts, etc., may be filmed at different reduction ratios. Those too large to be entirely included in one exposure are filmed beginning in the upper left hand corner, left to right and top to bottom, as many frames as required. The following diagrams illustrate the method:



L'exemplaire filmé fut reproduit grâce à la générosité de:

University of Victoria
McPherson Library

Les images suivantes ont été reproduites avec le plus grand soin, compte tenu de la condition et de la netteté de l'exemplaire filmé, et en conformité avec les conditions du contrat de filmage.

Les exemplaires originaux dont la couverture en papier est imprimée sont filmés en commençant par le premier plat et en terminant soit par la dernière page qui comporte une empreinte d'impression ou d'illustration, soit par le second plat, selon le cas. Tous les autres exemplaires originaux sont filmés en commençant par la première page qui comporte une empreinte d'impression ou d'illustration et en terminant par la dernière page qui comporte une telle empreinte.

Un des symboles suivants apparaîtra sur la dernière image de chaque microfiche, selon le cas: le symbole \rightarrow signifie "A SUIVRE", le symbole ∇ signifie "FIN".

Les cartes, planches, tableaux, etc., peuvent être filmés à des taux de réduction différents. Lorsque le document est trop grand pour être reproduit en un seul cliché, il est filmé à partir de l'angle supérieur gauche, de gauche à droite, et de haut en bas, en prenant le nombre d'images nécessaire. Les diagrammes suivants illustrent la méthode.



VICTORIA

LAWN TENNIS

CLUB.



VICTORIA

LAWD TENNIS

CLUB.

THE
LAW

THE
and

THE
be \$
ficer
Club
Ordin
for a
pay

Su
Junt
subs
ruar
and
tion
by t
mem
to re

RULES.

I.

This Club shall be called "THE VICTORIA LAWN TENNIS CLUB."

II.

The Club shall consist of Ordinary, Naval and Country Members.

III.

The subscription for Ordinary Members shall be \$5 a year, and \$10 entrance fee. Naval Officers shall become Honorary Members of the Club on payment of \$1 a month, in advance. Ordinary Members when absent from Victoria for all the Tennis season, in any one year, shall pay a reduced subscription of \$1 for that year.

IV.

Subscriptions shall be payable on the First of January in each year, and any member whose subscription is not paid on the First of February, shall be suspended from all the rights and privileges of a member until his subscription is paid, and if his subscription be not paid by the First of March, he shall cease to be a member: but the Committee shall have power to re-instate him.

V.

The Club shall be managed by a Committee of seven members, elected annually (of whom three shall form a quorum), who shall have power to fill up vacancies which may occur during the season in their body; to make by-laws, etc.; to administer the funds, and to do all such acts in furtherance of the objects of the Club as they may consider expedient. The Annual General Meeting for the election of a Committee shall be held in the third week in February.

VI.

Candidates for membership shall send their applications, 14 days before the ballot, to the Hon. Secretary, who shall submit them to the Committee for ballot. Ballots to take place on the 1st and 15th day of each month, or on the previous day if those days fall on a Sunday. One black ball in five to exclude.

VII.

If any circumstance connected with the conduct of a member likely to endanger the welfare and good order of the Club, be brought to the notice of the Committee, they shall have the power to suspend such member from the privileges of the Club; such suspension to be final, unless the member within 14 days of such suspension, calls a General Meeting and such meeting re-instate him in his full privileges as

a m
maj
thir
at th

T
men
days
six c
to c
pow
to th

TH
bers
not
mem
of \$
the p
votin

No
except

No
clusi
vide
Cour

a member by a vote, by ballot, of two-thirds majority of those present. Not less than one-third of the Ordinary members must be present at the meeting.

VIII.

Two Ladies may be introduced by any one member, and may be allowed to play on Tuesdays and Fridays, between the hours of two and six o'clock, and on Mondays and Thursdays up to one o'clock. The Committee shall have power to alter this Rule as experience may show to them to be expedient.

IX.

The Committee, at the request of two members, may admit gentlemen whose residence is not within 30 miles of Victoria, as temporary members for a period of one month, on payment of \$2.50. Such members shall be entitled to all the privileges of the Club with the exception of voting.

X.

No members or visitors are allowed to play except in proper shoes without heels.

XI.

No players shall occupy a Court to the exclusion of others longer than for two sets; provided that the last players having left the Court for an interval of five minutes and no

demand having been made for the Court, they shall be permitted to play another set.

XII.

Free admissions may be suspended by order of the Committee at any time.

XIII.

All Club or Public matches to be played under the Rules of the All England and Marylebone Lawn Tennis Clubs.

ney

ler

ed
e



