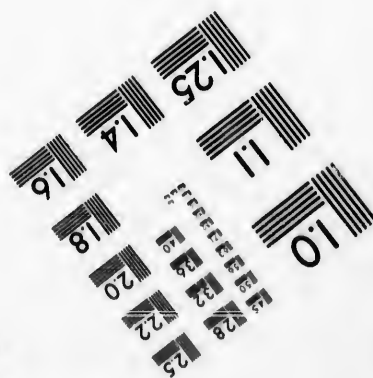
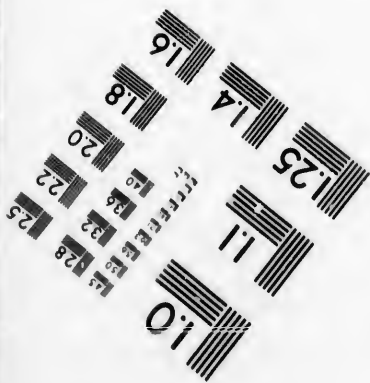
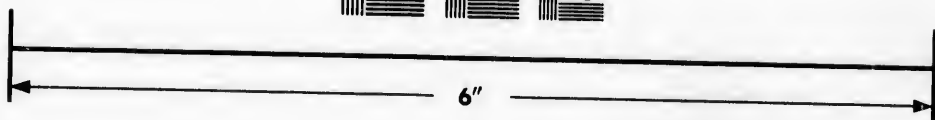
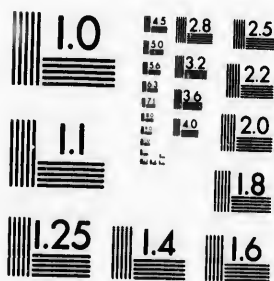


**IMAGE EVALUATION
TEST TARGET (MT-3)**



**Photographic
Sciences
Corporation**

23 WEST MAIN STREET
WEBSTER, N.Y. 14580
(716) 872-4503

**CIHM
Microfiche
Series
(Monographs)**

**ICMH
Collection de
microfiches
(monographies)**



Canadian Institute for Historical Microreproductions / Institut canadien de microreproductions historiques

© 1993

Technical and Bibliographic Notes / Notes techniques et bibliographiques

The Institute has attempted to obtain the best original copy available for filming. Features of this copy which may be bibliographically unique, which may alter any of the images in the reproduction, or which may significantly change the usual method of filming, are checked below.

L'Institut a microfilmé le meilleur exemplaire qu'il lui a été possible de se procurer. Les détails de cet exemplaire qui sont peut-être uniques du point de vue bibliographique, qui peuvent modifier une image reproduite, ou qui peuvent exiger une modification dans la méthode normale de filmage sont indiqués ci-dessous.

- Coloured covers/
Couverture de couleur
 - Covers damaged/
Couverture endommagée
 - Covers restored and/or laminated/
Couverture restaurée et/ou pelliculée
 - Cover title missing/
Le titre de couverture manque
 - Coloured maps/
Cartes géographiques en couleur
 - Coloured ink (i.e. other than blue or black)/
Encre de couleur (i.e. autre que bleue ou noire)
 - Coloured plates and/or illustrations/
Planches et/ou illustrations en couleur
 - Bound with other material/
Relié avec d'autres documents
 - Tight binding may cause shadows or distortion along interior margin/
La reliure serrée peut causer de l'ombre ou de la distorsion le long de la marge intérieure
 - Blank leaves added during restoration may appear within the text. Whenever possible, these have been omitted from filming/
Il se peut que certaines pages blanches ajoutées lors d'une restauration apparaissent dans le texte, mais, lorsque cela était possible, ces pages n'ont pas été filmées.
 - Additional comments:/
Commentaires supplémentaires:
- Coloured pages/
Pages de couleur
 - Pages damaged/
Pages endommagées
 - Pages restored and/or laminated/
Pages restaurées et/ou pelliculées
 - Pages discoloured, stained or foxed/
Pages décolorées, tachetées ou piquées
 - Pages detached/
Pages détachées
 - Showthrough/
Transparence
 - Quality of print varies/
Qualité inégale de l'impression
 - Continuous pagination/
Pagination continue
 - Includes index(es)/
Comprend un (des) index
- Title on header taken from: /
Le titre de l'en-tête provient:
- Title page of issue/
Page de titre de la livraison
 - Caption of issue/
Titre de départ de la livraison
 - Masthead/
Générique (périodiques) de la livraison

This item is filmed at the reduction ratio checked below/
Ce document est filmé au taux de réduction indiqué ci-dessous

10x	12x	14x	16x	18x	20x	22x	24x	26x	28x	30x	32x
					✓						

The copy filmed here has been reproduced thanks to the generosity of:

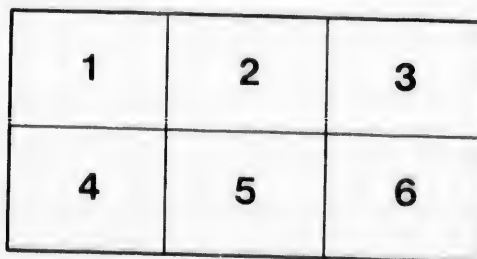
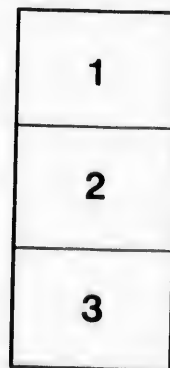
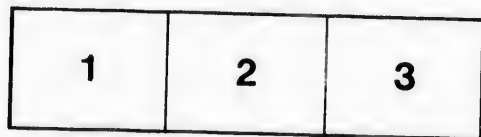
National Library of Canada

The images appearing here are the best quality possible considering the condition and legibility of the original copy and in keeping with the filming contract specifications.

Original copies in printed paper covers are filmed beginning with the front cover and ending on the last page with a printed or illustrated impression, or the back cover when appropriate. All other original copies are filmed beginning on the first page with a printed or illustrated impression, and ending on the last page with a printed or illustrated impression.

The last recorded frame on each microfiche shall contain the symbol \rightarrow (meaning "CONTINUED"), or the symbol ∇ (meaning "END"), whichever applies.

Maps, plates, charts, etc., may be filmed at different reduction ratios. Those too large to be entirely included in one exposure are filmed beginning in the upper left hand corner, left to right and top to bottom, as many frames as required. The following diagrams illustrate the method:



L'exemplaire filmé fut reproduit grâce à la générosité de:

Bibliothèque nationale du Canada

Les images suivantes ont été reproduites avec le plus grand soin, compte tenu de la condition et de la netteté de l'exemplaire filmé, et en conformité avec les conditions du contrat de filmage.

Les exemplaires originaux dont la couverture en papier est imprimée sont filmés en commençant par le premier plat et en terminant soit par la dernière page qui comporte une empreinte d'impression ou d'illustration, soit par le second plat, selon le cas. Tous les autres exemplaires originaux sont filmés en commençant par la première page qui comporte une empreinte d'impression ou d'illustration et en terminant par la dernière page qui comporte une telle empreinte.

Un des symboles suivants apparaîtra sur la dernière image de chaque microfiche, selon le cas: le symbole \rightarrow signifie "A SUIVRE", le symbole ∇ signifie "FIN".

Les cartes, planches, tableaux, etc., peuvent être filmés à des taux de réduction différents. Lorsque le document est trop grand pour être reproduit en un seul cliché, il est filmé à partir de l'angle supérieur gauche, de gauche à droite, et de haut en bas, en prenant le nombre d'images nécessaire. Les diagrammes suivants illustrent la méthode.

qu'il
e cet
t de vue
age
cation
qués

4

Reprinted from the OTTAWA NATURALIST, Vol. VI., p. 105-113.
MONDAY AFTERNOON POPULAR LECTURES—BOTANY.
THE EDUCATIONAL VALUE OF BOTANIC GARDENS.

By James Fletcher.

Read January 26th, 1891.

One of the influences which has affected materially the progress of the science of Botany, has been the institution in various parts of the world of Botanic Gardens. The importance of public Botanic Gardens has for centuries been recognized by the governments of civilized states. In an article on this subject in the *Encyclopædia Britannica*, we find as follows: "The foundation of Botanic Gardens during the XVI and XVII centuries did much in the way of advancing Botany. They were at first appropriated chiefly to the cultivation of medicinal plants. This was especially the case at universities, where medical schools existed. The first Botanic Garden was established at Padua in 1545. The *Jardin des Plantes* at Paris, was established in 1626. The Botanic Garden at Oxford was founded in 1632. The garden at Edinburgh was founded by Sir Andrew Balfour and Sir Robert Sibbald in 1670, and, under the name of the *Physic Garden*, was placed under the superintendence of James Sutherland, afterwards professor of Botany in the university. The park and garden at Kew date from about 1730. The garden of the Royal Dublin Society at Glasnevin, was opened about 1796. Geener states that at the end of the 18th century, there were 1600 Botanic Gardens in Europe." (*Ency. Brit.* IV, 80.)

"The Royal Botanic Gardens of Kew originated in the exotic garden, formed by Lord Capel and greatly extended by the Princess Dowager, widow of Frederick, Prince of Wales, and by George III., aided by the skill of the Aitons, and of Sir Joseph Banks. In 1840 the gardens were adopted as a national establishment, and transferred to the department of woods and forests. The gardens proper, which originally contained only about 11 acres, have been increased to 75 acres and the pleasure grounds and arboretum adjoining extend to 270 acres." (*Ency. Brit.* XIV, p. 55.)

It may be well now to consider what a Botanic Garden is. In a report of a committee appointed by the British Parliament, in 1838, to enquire into the management, etc. of the Royal Gardens at Kew

AC901

P2

NO. 0057

XXXX

previous to their being taken over by the Government as the National Public Botanic Gardens, we find that Dr. Lindley, who signed the report, defines a Botanic Garden as "A Garden of Science and Instruction," which means, I take it, a garden where science, that is knowledge, concerning plants may be accumulated and there applied for educational purposes. In order that these objects may be attained in the most satisfactory manner, there are certain features of the work which must always be borne in mind. The means of gathering together the material to be grown in the garden, by purchase, by exchange, by communication with correspondents at other gardens or who live in different parts of the world, although of great importance in the management of a botanical garden, do not come within the scope of my subject to-day. One of the chief sources of supply however is, of course, by exchange with other Botanical Gardens, of which there are many, both public and private, in all parts of the world where education and culture are cherished. In the first instance Botanic Gardens were merely collections of plants which were deemed useful for their medicinal qualities, later general utility, beauty, variety, or even curiosity were considered, and it is only comparatively lately that the most important development of all, the educational value of these institutions, has been recognized. One thing which should be conspicuously apparent on entering a Botanic Garden is systematic arrangement, not necessarily any particular arrangement, but an arrangement by which something is illustrated. A feature of the utmost importance also, is that every plant should be labelled plainly, both with its scientific and vernacular names. In addition to this any further information should be given which can be put on the label without confusion, such as its native country and date of introduction, for foreign plants, and more definite localities in the case of indigenous species. When a plant is the source of some useful product, and this is not shown by the name, it should be indicated on the label. In short the label should give as much information to a visitor as is possible without loss of clearness. In a scientific garden record books, giving full particulars, must of course, be kept, as to the source, age and condition of every individual plant grown. This is of great value and may be the means of saving much loss by preventing the

National Library
of CanadaBibliothèque nationale
du Canada

introduction of trees or other plants into districts unsuitable for their proper development. Many plants are peculiarly affected by climate, the fact that such will grow even luxuriantly in a certain locality makes it by no means sure that they will produce in paying quantities any useful products derived from them in their natural habitat. Most plants show impatience of being grown in unsuitable soil or climate by their behaviour as to flowering or fruiting. Many of our wild plants when grown in England, flower very seldom or not at all, as the Virginian Creeper and Wax Works Vine (*Celastrus scandens*). The charming British Columbian shrub *Nuttallia cerasiformis* although it flowers frequently and profusely in England, will not produce the exquisitely beautiful waxy berries, with their shades of pure white, yellow, pink and black, all growing on the same bush and at the same time, which make it such an attractive object in the Vancouver Island hedgerows and woods. Similarly the production by plants of alkaloids, aromatic oils, and other products, which may be utilized in the various arts and sciences, is much affected by change of climate. But, on the other hand, many most useful members of the vegetable kingdom can, and have been introduced from one part of the world to others where they were not found naturally. Tea from China, and coffee from Arabia, the banana from Africa, the peach from Persia, and many other luscious fruits; our own indian corn, the sugar cane and numerous grasses are now grown over far wider areas on the globe's surface, than were originally adorned with them by nature. Forest trees and trees and shrubs for hedges and ornament, are frequently being imported from one country into another or from other parts of the same country. But all plants, even from the same locality, do not thrive similarly when placed under the changed conditions of soil and climate consequent upon their introduction into another country or locality. In this way thousands of plants have been destroyed and much capital squandered, which might have been obviated had there been a botanic garden, where careful experiment could have been made beforehand with all the particulars recorded for reference when required. Certain trees will thrive well in some localities for a few years and then suddenly their development will cease—instances of this are found in the attempted cultivation of certain

kinds of apple and pear trees in some parts of Canada, where they seldom attain to any great age or size. The black walnut again is a tree which has disappointed some of its admirers. For a few years after germination, being a vigorous grower, the rapid production of wood gave so much promise that experimenters were induced to devote considerable areas to its cultivation, only to find after 10 or 15 years that the trees rapidly decreased in vigour and retrograded. This may be due to their having penetrated through the upper layer of suitable soil and reached a colder or less congenial stratum; but, I do not wish to discuss that point now; the unnecessary outlay would not have been made, had it been possible to examine trees of a known age, grown under similar circumstances in a botanic garden. Again on the other hand, a botanic garden would be the means of introducing and distributing through the country new and valuable plants, with the great advantage that those who acquired them would know beforehand whether they were likely to succeed. Botanic Gardens to be of the greatest educational utility should be, of course, thrown open to the public as much as possible, and for that reason should be laid out in an ornamental manner, so that not only botanists, gardeners and specialists may be satisfied when they visit them to study and examine new or rare plants, but, also that they may form attractive places of recreation for the large and important class of mechanics and other labouring classes and their families, consisting in this country of people possessed of considerable education, and, who, when once attracted to one of these gardens, could not but find in it an efficient instrument for refining the taste, increasing their knowledge and augmenting in a very high degree the amount of rational and elevating pleasure available to them. A fertile source of interest in Botanic Gardens is the cultivation and exhibition of the various plants from which foods and other economic products are derived. Interest in these will soon extend to other plants. In the same line of thought is the fostering of a love for flowers in children, and I believe that every child should be taught to wish for a garden of its own. I know of nothing at all which will give such continued and wholesome pleasure to a child as a small plot of garden of which it considers it has the sole proprietorship. If any one wishes to see true pleasure, let them take a seedsman's catalogue, about the

month of May and give it, together with a small amount of money to spend on seeds, to a child who has had a garden of its own and learnt to love flowers. Do not give any help in the choosing unless especially asked to do so, and limit the choice to about three or four packets. For a child to get the most pleasure out of a garden it should not have too much assistance, either in plants or work. The soil should be well dug up to begin with, all else should be done by the juvenile proprietor, and for the garden to be of the most use, it should not be made too easy to get plants, so that each one may be cherished and new ones grown from seeds or cuttings. I know from my own experience when a child, what a source of delight my garden was. On coming home from boarding-school to spend the holidays, the first thing to be looked at was my garden. The associations with flowers are all good and enlightening, and a love for them should be most carefully engendered and cherished in those unhappy children where it does not exist naturally. Such however, are exceedingly rare. The greatest encouragement to a child who has a garden of its own, is for the elders to take an interest in it, never decline to go and look at it whenever asked to do so, and above all things do not interfere in the arrangement and management except to prevent disastrous mistakes; small mistakes will do good, by teaching their own lessons. Now, what these gardens are to children, public gardens are to the masses, furnishing them with, at the same time, innocent and beneficial and also engrossing and satisfying occupation.

All public gardens should be scientific to the extent of having everything properly named and plainly labelled. The first demand when anything creates interest is to know its name, and it is a great disappointment when this cannot be obtained. As a matter of history it is interesting to learn that the Royal Botanic Garden at Kew, now the most extensive scientific garden in the world, was far from being scientific at the time it was taken over, and the committee appointed to investigate the matter, when referring to the fact that few plants were properly labelled, expressed the following opinion of a garden in that state: "It is not easy to discover what advantage except that of a pleasant walk has been derived, by the public, from the privilege of visiting the garden."

The value of plants as food and medicine is a legitimate field of

enquiry for the botanist and the one by means of which he comes most frequently in contact with the unscientific public. Now, there is no place where such investigations can be carried on so conveniently as at a properly equipped Botanic Garden, where plants can be grown under observation and examined, at all stages of development, by investigators specially trained to understand and make the most of what they see, and also fully equipped with the necessary apparatus and literature. Such knowledge as we have, as to the value for food of most of the more important products of the vegetable kingdom, has been derived from the aboriginal inhabitants of the countries where the plants producing them occur in a state of nature; but the scientific botanist has added very much indeed to this list of useful plants from his knowledge of other species in the same or closely allied families. On the other hand in medical botany the useful knowledge derived from aboriginal sources is comparatively small, by far the larger proportion of the valuable vegetable remedies having been discovered by the scientific chemist as a result of direct chemical analysis of plants, aided by experiment or actual knowledge of the effects produced upon the human frame by the various products obtained.

A subject of great interest to everybody and one which is frequently made an excuse by ill-informed people for not studying wild plants, is the fear of being poisoned. Strangely enough this fear never troubles them with regard to cultivated and greenhouse plants where a much larger proportion of poisonous species is to be found than is the case in the woods around us. As a matter of fact poisonous plants in Canada are exceedingly rare. The Poison Ivy (*Rhus Toxicodendron*) is the only plant in this part of Canada, which is poisonous to the touch, and even with regard to this, although it is so virulent in the southern states it is, as you all know, an extremely rare thing to find anyone affected by it here. There are, also, far fewer plants than most people think which are actually poisonous, even when taken internally; and anyone with a very small amount of knowledge and common sense is warned against these by their acrid taste or nauseous odour. This, I have no doubt, is the reason why cattle and wild animals which feed on vegetation are so seldom poisoned. The poisonous plants are distasteful to them and are not eaten in any quantity when their dangerous

nature has been detected by the keen senses of taste or smell. For this reason I can make no excuse for people, who are old enough to think, who allow themselves to be poisoned, and I do not believe any sensible person ever will.

I quite agree with my friend Professor Macoun who a few years ago, in speaking of the vast supplies of good wholesome food going to waste all round us every year in the shape of various fungi, touched on this subject and speaking of the small number of poisonous plants in any locality said: "I have no patience with the stupid people who allow themselves to starve to death in a country clothed with grass, plants, and trees, nearly all of which are capable of sustaining life." With regard to such plants as contain noxious principles there are a few general rules, which may be borne in mind by those who travel in the wilds and are liable to require such knowledge, and to which, without going into undue detail, it may not be amiss to refer here. Plants belonging to the same natural order, as a rule, contain similar constituents. There are large orders of plants every member of which makes wholesome food, notwithstanding the occasional presence of acrid principles; such we find in the cress family which may always be recognized by their cruciform flowers, made up of four separate petals. The same may be said of all the rose family which have the stamens standing on the calyx as we find in the rose and apple. All grasses as wheat and corn, and all plants bearing papilionaceous flowers as the bean, the pea, and clover, produce wholesome food for man and beast.

Mrs. Lincoln in her "Familiar Lectures on Botany" says "Such plants as have five stamens and *one pistil*, with a corolla of a dull livid colour, and a disagreeable smell, are usually poisonous; the thorn apple (*Stramonium*) and tobacco are examples. The umbelliferous plants, which grow in *wet* places, have usually a nauseous smell; such plants *are poisonous*, as the water hemlock. Umbelliferous plants which grow in dry places, usually have an aromatic smell and are not poisonous, as caraway and fennel. Plants with labiate corollas, and containing their seeds in capsules, are often poisonous, as the foxglove (*Digitalis*); also such as contain a *milky juice*, unless they are compound flowers. Such plants as have horned or hooded nectaries, as the columbine and monk's hood are mostly poisonous. Amongst plants which are seldom

poisonous are the compound flowers as the Dandelion and Boneset (*Eupatorium*); such as have labiate corollas, with seeds lying naked in the calyx, are seldom or never poisonous, the mint and thyme are examples of such plants."

Plants containing mucilaginous matter are, as a rule wholesome, and in British Columbia the Indians eat almost any bulbous root, making regular annual trips to districts where certain liliaceous plants abound. Amongst those roots which they collect in this way are the camass (*Camassia esculenta*) *Lilium Columbianum*, *Fritillaria*, the small bulbs of *Calypso borealis* and, as Professor Macoun tells me, the bulbs of nearly all bulbous-rooted plants, which they designate by the general name of *muck-a-muck*. Another article of food to which they are very partial is the inner bark of young trees of *Pinus Murrayana*.

With regard to the poisonous properties of the parsley family referred to above, Dr. Trimen says, "The properties of the *Umbelliferae* are of three principle and remarkably different kinds. In one section a watery and acrid matter is present; in a second a milky gum-resinous secretion; and in a third, an aromatic and oily one. When the first of these predominates, they are poisonous; the second in excess converts them into stimulants; and the third renders them carminative and serviceable as pleasant condiments. If both the acrid and gum-resinous secretions be absent they are often useful articles of food, as happens with the sweet roots of the carrot and the parsnip, and the foliage of the samphire, fennel, chervil, parsley and celery."

Before closing I should like to say a few words concerning the Botanic Garden and Arboretum at the Central Experimental Farm. I have there in my charge a tract of 65 acres of rolling land admirably suited to the purposes of a Botanic Garden. The higher portion is virtually a plateau with a wide bottom running round three sides of it and with banks sloping down to the bottom land. This variety of aspect is very convenient for the purposes to which it has been assigned. The soil is not particularly good but will improve with treatment. The different natural orders and families of plants will be represented by groups, many of which have been already located. There are at the present time about 400 species of trees and shrubs planted out, and of most of these there are two specimens—all are labelled and a record has been

taken of their time of planting. Special efforts will be made to have the collection illustrating the Canadian flora as complete as possible, and I now appeal to the members of the Ottawa Field-Naturalists' Club to help me in securing roots of as many as possible of our native plants for cultivation. Every working botanist knows the difficulty of deciding specific limits from dried herbarium specimens. I shall, therefore, make a specialty of trying to clear up some of the botanical problems, which now bother botanists, by growing several specimens from seed, where possible from various localities. I have already several species under cultivation, the seeds of which were collected by Professor Macoun, myself or some of my correspondents, and I shall be glad to experiment with any seeds sent to me for that purpose. I would particularly request now the seeds of *Asters* and *Solidagoes*, as I am convinced there is yet much to be done, in working up the Canadian representatives of these two genera, which can only be satisfactorily accomplished by growing them from the seed.

Besides the solution of such scientific problems as the above, economic plants from other parts of the world will be tested as to their suitability for profitable cultivation in Canada. Forestry now becoming so important in Canada, will also receive attention. Already enormous numbers of young trees have been grown from the seed and distributed to settlers on the treeless prairies of Manitoba and the North-West Territories. Before long it will become necessary in Canada to grow trees for timber, in the same way as is now systematically done in Germany. This however will not be done for many years to come and by that time, I hope, valuable data will be available from the growth of the specimens on the Experimental Farm to show what kinds of trees can be profitably grown.

Many other benefits, I trust, will come from this Botanic Garden now begun, by which general botanical knowledge, economic and scientific, will be advanced, and I look forward to the time when the Botanic Garden of Ottawa, shall be one of the chief attractions of this part of the Dominion.

