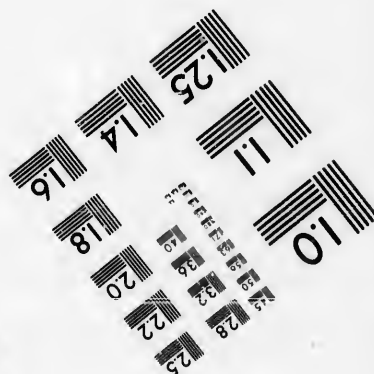
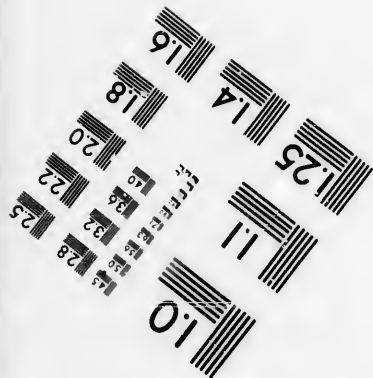
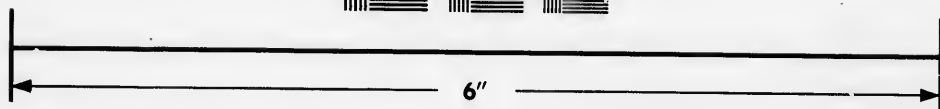
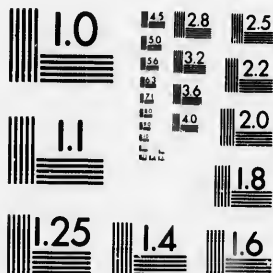


**IMAGE EVALUATION
TEST TARGET (MT-3)**



**Photographic
Sciences
Corporation**

23 WEST MAIN STREET
WEBSTER, N.Y. 14580
(716) 872-4503

**CIHM/ICMH
Microfiche
Series.**

**CIHM/ICMH
Collection de
microfiches.**



Canadian Institute for Historical Microreproductions / Institut canadien de microreproductions historiques

© 1986

Technical and Bibliographic Notes/Notes techniques et bibliographiques

The Institute has attempted to obtain the best original copy available for filming. Features of this copy which may be bibliographically unique, which may alter any of the images in the reproduction, or which may significantly change the usual method of filming, are checked below.

L'Institut a microfilmé le meilleur exemplaire qu'il lui a été possible de se procurer. Les détails de cet exemplaire qui sont peut-être uniques du point de vue bibliographique, qui peuvent modifier une image reproduite, ou qui peuvent exiger une modification dans la méthode normale de filmage sont indiqués ci-dessous.

- | | |
|--|--|
| <input checked="" type="checkbox"/> Coloured covers/
Couverture de couleur | <input type="checkbox"/> Coloured pages/
Pages de couleur |
| <input type="checkbox"/> Covers damaged/
Couverture endommagée | <input checked="" type="checkbox"/> Pages damaged/
Pages endommagées |
| <input type="checkbox"/> Covers restored and/or laminated/
Couverture restaurée et/ou pelliculée | <input type="checkbox"/> Pages restored and/or laminated/
Pages restaurées et/ou pelliculées |
| <input type="checkbox"/> Cover title missing/
Le titre de couverture manque | <input checked="" type="checkbox"/> Pages discoloured, stained or foxed/
Pages décolorées, tachetées ou piquées |
| <input type="checkbox"/> Coloured maps/
Cartes géographiques en couleur | <input type="checkbox"/> Pages detached/
Pages détachées |
| <input type="checkbox"/> Coloured ink (i.e. other than blue or black)/
Encre de couleur (i.e. autre que bleue ou noire) | <input checked="" type="checkbox"/> Showthrough/
Transparence |
| <input type="checkbox"/> Coloured plates and/or illustrations/
Planches et/ou illustrations en couleur | <input type="checkbox"/> Quality of print varies/
Qualité inégale de l'impression |
| <input type="checkbox"/> Bound with other material/
Relié avec d'autres documents | <input type="checkbox"/> Includes supplementary material/
Comprend du matériel supplémentaire |
| <input type="checkbox"/> Tight binding may cause shadows or distortion
along interior margin/
La reliure serrée peut causer de l'ombre ou de la
distorsion le long de la marge intérieure | <input type="checkbox"/> Only edition available/
Seule édition disponible |
| <input type="checkbox"/> Blank leaves added during restoration may
appear within the text. Whenever possible, these
have been omitted from filming/
Il se peut que certaines pages blanches ajoutées
lors d'une restauration apparaissent dans le texte,
mais, lorsque cela était possible, ces pages n'ont
pas été filmées. | <input type="checkbox"/> Pages wholly or partially obscured by errata
slips, tissues, etc., have been refilmed to
ensure the best possible image/
Les pages totalement ou partiellement
obscurcies par un feuillet d'errata, une pelure,
etc., ont été filmées à nouveau de façon à
obtenir la meilleure image possible. |
| <input type="checkbox"/> Additional comments:
Commentaires supplémentaires: | |

This item is filmed at the reduction ratio checked below/
Ce document est filmé au taux de réduction indiqué ci-dessous.

10X	12X	14X	16X	18X	20X	22X	24X	26X	28X	30X	32X
						✓					

The copy filmed here has been reproduced thanks to the generosity of:

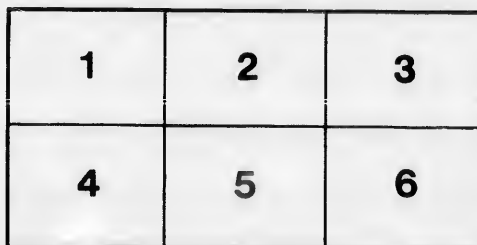
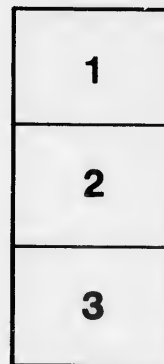
Douglas Library
Queen's University

The images appearing here are the best quality possible considering the condition and legibility of the original copy and in keeping with the filming contract specifications.

Original copies in printed paper covers are filmed beginning with the front cover and ending on the last page with a printed or illustrated impression, or the back cover when appropriate. All other original copies are filmed beginning on the first page with a printed or illustrated impression, and ending on the last page with a printed or illustrated impression.

The last recorded frame on each microfiche shall contain the symbol \rightarrow (meaning "CONTINUED"), or the symbol ∇ (meaning "END"), whichever applies.

Maps, plates, charts, etc., may be filmed at different reduction ratios. Those too large to be entirely included in one exposure are filmed beginning in the upper left hand corner, left to right and top to bottom, as many frames as required. The following diagrams illustrate the method:



L'exemplaire filmé fut reproduit grâce à la générosité de:

Douglas Library
Queen's University

Les images suivantes ont été reproduites avec le plus grand soin, compte tenu de la condition et de la netteté de l'exemplaire filmé, et en conformité avec les conditions du contrat de filmage.

Les exemplaires originaux dont la couverture en papier est imprimée sont filmés en commençant par le premier plat et en terminant soit par la dernière page qui comporte une empreinte d'impression ou d'illustration, soit par le second plat, selon le cas. Tous les autres exemplaires originaux sont filmés en commençant par la première page qui comporte une empreinte d'impression ou d'illustration et en terminant par la dernière page qui comporte une telle empreinte.

Un des symboles suivants apparaîtra sur la dernière image de chaque microfiche, selon le cas: le symbole \rightarrow signifie "A SUIVRE", le symbole ∇ signifie "FIN".

Les cartes, planches, tableaux, etc., peuvent être filmés à des taux de réduction différents. Lorsque le document est trop grand pour être reproduit en un seul cliché, il est filmé à partir de l'angle supérieur gauche, de gauche à droite, et de haut en bas, en prenant le nombre d'images nécessaire. Les diagrammes suivants illustrent la méthode.

LIST OF THE PLANTS KNOWN TO OCCUR ON THE COAST
AND IN THE INTERIOR OF THE LABRADOR
PENINSULA.

COMPILED BY

JAMES M. MACOUN

The EDITH and LORNE PIERCE
COLLECTION of CANADIANA



Queen's University at Kingston

Lis

T

alre

of

tril

T

of

ilto

Eas

Jan

pris

not

bas

the

ove

T

Co

con

the

assi

188

the

fou

Ja

and

189

I

that

nan

fron

rect

plan

LIST OF THE PLANTS KNOWN TO OCCUR ON THE COAST AND IN THE
INTERIOR OF THE LABRADOR PENINSULA. COMPILED BY JAMES
M. MACOUN.

(*Reprinted from Annual Report, Geological Survey of Canada.*)
Vol. VIII., Part I., Appendix VI.

The following list, which has been carefully compiled from lists already published and from MS. notes and specimens in the herbarium of the Geological Survey, is divided into four columns, so that the distribution of each species, so far as known, may be seen at a glance.

The first column contains those species known to occur on the coast of Labrador, the second those growing in the basin of the upper Hamilton River, the third those growing in the basins of the Rupert and East Main rivers and the fourth those growing along the shores of James Bay. The area included in the second and third columns comprises the whole central part of the peninsula, and many of the plants noted in the third column and not in the second doubtless grow in the basin of the Hamilton River; but, while the third column represents the collections made in three seasons, under favourable conditions and over a wide area, one season only was spent on the Hamilton River.

The first column has been copied from Dr. Packard's "The Labrador Coast," with the addition of a few species overlooked when his list was compiled, or which have since been collected. The species included in the other three columns have all been collected by Mr. Low or his assistants. Mr. J. M. Macoun having made the collections in 1885 and 1887, and Mr. A. H. D. Ross, in 1892, the very complete collection of the plants growing along the East Main River. Lists of the plants found at Lake Mistassini, on the Rupert River and along the shores of James Bay have been printed as addenda to Mr. Low's reports of 1885 and 1887, and to these the results of his explorations in 1888, 1892, 1893 and 1894 are now added.

Recent revisions of genera have in some cases changed the names that appear in this list, but to obviate the printing of synonyms the names under which species and varieties have been already recorded from the Labrador Peninsula have been retained, except where a correction was necessary or there was the possibility of confusing two plants: in such cases both names are given.

(*Page in original Report 353 L.*)

	1.	2.	3.	4.
RANUNCULACE.E.				
<i>Anemone parviflora</i> , Michx.	*	*	*	*
" <i>multifida</i> , DC.			*	*
" <i>dichotoma</i> , Linn.		*	*	*
<i>Thalictrum dioicium</i> , Linn.	*	*	*	*
" <i>polygamum</i> , Muhl. (<i>T. Cornuti</i> , Linn.)	*	*	*	*
<i>Ranunculus aquatilis</i> , Linn., var. <i>trichophyllus</i> , Chaix		*	*	*
" <i>Cymbalaria</i> , Pursh		*	*	*
" <i>repans</i> , Linn.		*	*	*
" <i>affinis</i> , R. Br.	*	*	*	*
" var. <i>validus</i> , Gray		*	*	*
" <i>abortivus</i> , Linn.		*	*	*
" <i>recurvatus</i> , Poir.		*	*	*
" <i>pygmaeus</i> , Wahl.	*	*	*	*
" <i>nivalis</i> , Linn.	*	*	*	*
" <i>acris</i> , Linn.		*	*	*
" <i>Pennsylvanicus</i> , Linn.		*	*	*
<i>Caltha palustris</i> , Linn.	*	*	*	*
<i>Coptis trifolia</i> , Salisb.	*	*	*	*
<i>Actaea spicata</i> , L., var. <i>rubra</i> , Ait.		*	*	*
" <i>alba</i> , Big.		*	*	*
NYMPH.EACE.E.				
<i>Nuphar advena</i> , Ait.	*	*	*	*
SARRACENIACE.E.				
<i>Sarracenia purpurea</i> , Linn.	*	*	*	*
PAPAVERACE.E.				
<i>Papaver nudicaule</i> , Linn.	*	*	*	*
FUMARIACE.E.				
<i>Corydalis glauca</i> , Pursh.		*	*	*
CRUCIFER.E.				
<i>Nasturtium palustre</i> , DC.		*	*	*
<i>Cardamine hirsuta</i> , Linn.		*	*	*
" <i>pratensis</i> , Linn.		*	*	*
<i>Arabis stricta</i> , Huds. (<i>A. confinis</i> , Wat.)	*	*	*	*
" <i>alpina</i> , Linn.	*	*	*	*
" <i>humifusa</i> , Wat., var. <i>pubescens</i> , Wat.		*	*	*
<i>Barbarea vulgaris</i> , R. Br.		*	*	*
<i>Erysimum cheiranthoides</i> , Linn.		*	*	*
<i>Sisymbrium humile</i> , C. A. Meyer		*	*	*
<i>Draba alpina</i> , Linn., var. (?) <i>corymbosa</i> , Dur.	*	*	*	*
" <i>stellata</i> , Jacq., var. <i>nivalis</i> , Regel.	*	*	*	*
" <i>incana</i> , Linn.	*	*	*	*
" var. <i>confusa</i> , Poir.	*	*	*	*
" <i>arabizans</i> , Michx.	*	*	*	*
" <i>aurea</i> , Vahl.	*	*	*	*
<i>Cochlearia officinalis</i> , Linn.	*	*	*	*
" <i>tridactylites</i> , Banks.	*	*	*	*
<i>Capsella Bursa-pastoris</i> , Moench.	*	*	*	*
<i>Thlaspi arvense</i> , Linn.	*	*	*	*
<i>Viola blanda</i> , Willd.	*	*	*	*
" <i>palmata</i> , Linn., var. <i>eucullata</i> , Gray.		*	*	*
" <i>palustris</i> , Linn.		*	*	*
" <i>canina</i> , Linn., var. <i>Muhlenbergii</i> , Gray.	*	*	*	*

3.	4.		1.	2.	3.	4.
		CARYOPHYLLACE.E.				
*	*	<i>Silene Ameria</i> , Linn.....				*
*	*	" <i>noctiflora</i> , Linn.....				*
*	*	" <i>acaulis</i> , Linn.....				*
*	*	<i>Lychnis apetala</i> , Linn.....				*
*	*	" <i>alpina</i> , Linn.....				*
*	*	<i>Arenaria verna</i> , Linn.....				*
*	*	" var. <i>hirta</i> , Wat.....				*
*	*	" <i>Michauxii</i> , Hook.....				*
*	*	" <i>Greenlandica</i> , Spreng.....				*
*	*	" <i>serpyllifolia</i> , Linn.....				*
*	*	" <i>lateriflora</i> , Linn.....				*
*	*	" <i>peplodes</i> , Linn.....				*
*	*	<i>Stellaria media</i> , Smith.....				*
*	*	" <i>borealis</i> , Bigel.....				*
*	*	" var. <i>alpestris</i> , Gray.....				*
*	*	" <i>crassifolia</i> , Ehrh.....				*
*	*	" <i>longipes</i> , Goldie.....				*
*	*	" var. <i>minor</i> , Hook.....				*
*	*	" " <i>Edwardsii</i> , T. and G.....				*
*	*	" <i>humifusa</i> , Rottb.....				*
*	*	<i>Cerastium vulgatum</i> , Linn.....				*
*	*	" <i>arvense</i> , Linn.....				*
*	*	" <i>alpinum</i> , Linn.....				*
*	*	<i>Sagina nodosa</i> , E. Meyer.....				*
*	*	<i>Buda borealis</i> , Wat. (<i>Spergularia salina</i> , Presl.).....				*
		PORTULACACE.E.				
*	*	<i>Montia fontana</i> , Linn.....		*		
		LINACE.E.				
*	*	<i>Linum perenne</i> , Linn.....				*
		GERANIACE.E.				
*	*	<i>Geranium Carolinianum</i> , Linn.....				*
		RHAMNACE.E.				
*	*	<i>Rhamnus alnifolius</i> , L'Her.....				*
		SAPINDACE.E.				
*	*	<i>Acer spicatum</i> , Lam.....				*
		LEGUMINOSE.E.				
*	*	<i>Trifolium repens</i> , Linn.....				*
*	*	<i>Astragalus alpinus</i> , Linn.....				*
*	*	<i>Oxytropis podocarpa</i> , Gray.....				*
*	*	" <i>caespitris</i> , Linn., var. <i>caerulea</i> , Koch.....				*
*	*	<i>Hedysarum boreale</i> , Nutt.....				*
*	*	<i>Vicia Cracca</i> , Linn.....				*
*	*	" <i>Americana</i> , Muhl.....				*
*	*	<i>Lathyrus maritimus</i> , Bigel.....				*
*	*	" <i>pa uster</i> , Linn.....				*
		ROSACE.E.				
*	*	<i>Prunus Pennsylvanica</i> , Linn.....		*	*	*
*	*	<i>Spiraea salicifolia</i> , Linn.....			*	*

	1.	2.	3.	4.
ROSACEAE— <i>Continued.</i>				
<i>Rubus Chamemorus</i> , Linn.	*	*	*	*
" <i>arcticus</i> , Linn.	*	*	*	*
" " var. <i>grandiflorus</i> , Ledeb.	*	*	*	*
" <i>triflorus</i> , Rich.	*	*	*	*
" <i>strigosus</i> , Michx.	*	*	*	*
<i>Dryas octopetala</i> , Linn.	*			
" " var. <i>integrifolia</i> , Cham. Sch.	*	*		*
<i>Geum macrophyllum</i> , Willd.	*		*	
" <i>strictum</i> , Linn.	*	*	*	
" <i>rivale</i> , Linn.	*		*	
" <i>triflorum</i> , Pursh.	*		*	
<i>Sibbaldia proembens</i> , Linn.	*		*	
<i>Fragaria Virginiana</i> , Ehrh.	*	*	*	*
<i>Potentilla Norvegica</i> , Linn.	*	*	*	*
" <i>arguta</i> , Pursh.	*		*	
" <i>Pennsylvanica</i> , Linn.	*		*	
" <i>nivea</i> , Linn.	*		*	
" <i>maculata</i> , Poir.	*		*	
" <i>emarginata</i> , Pursh.	*		*	
" <i>palustris</i> , Scop.	*	*	*	*
" <i>fruticosa</i> , Linn.	*	*	*	*
" <i>tridentata</i> , Sol.	*	*	*	*
" <i>inserna</i> , Linn.	*	*	*	*
<i>Alchemilla vulgaris</i> , Linn.	*		*	
<i>Poterium Canadense</i> , Benth and Hook.	*	*		
<i>Rosa Sayi</i> , Schwein.	*		*	
<i>Pyrus Americana</i> , DC.	*	*	*	*
<i>Amelanchier Canadensis</i> , T. and G., var. <i>oblongifolia</i> , T. and G.	*	*	*	*
" " " var. <i>oligocarpa</i> , T. and G.	*	*	*	*
SAXIFRAGACEAE.				
<i>Saxifraga oppositifolia</i> , Linn.	*			
" <i>Aizoon</i> , Jacq.	*			
" <i>caespitosa</i> , Linn.	*			
" <i>rivularis</i> , Linn.	*			
" <i>cernua</i> , Linn.	*			
" <i>nivalis</i> , Linn.	*			
" <i>hieracifolia</i> , Waldst. and Kit.	*			
" <i>Hirculus</i> , Linn.	*			
" <i>tricuspidata</i> , Retz.	*		*	*
" <i>aizoides</i> , Linn.	*		*	*
<i>Mitella nuda</i> , Linn.	*	*	*	*
<i>Parnassia palustris</i> , Linn.	*	*	*	*
" <i>parviflora</i> , Linn.	*	*	*	*
" <i>Kotzebuei</i> , Cham. and Schlecht.	*		*	*
<i>Ribes oxycanthoides</i> , Linn.	*		*	*
" <i>lacustris</i> , Poir.	*	*	*	*
" <i>rubrum</i> , Linn.	*	*	*	*
" <i>prostratum</i> , L'Her.	*	*	*	*
CRASSULACEAE.				
<i>Sedum Rhodiola</i> , DC.	*			
DROSERACEAE.				
<i>Drosera rotundifolia</i> , Linn.	*		*	
" <i>intermedia</i> , Drev. and Hayne, var. <i>Americana</i> , DC.	*	*	*	*

	1.	2.	3.	4.
HALORAGACEÆ.				
Hippuris vulgaris, Linn.	*		*	*
Myciophyllum spicatum, Linn.				*
ONAGRACEÆ.				
Circœa alpina, Linn.				*
Epilobium spicatum, Lam. (<i>E. angustifolium</i> , Linn.)	*	*	*	*
" latifolium, Linn.	*	*	*	*
" amagallibifolium, Lam. (<i>E. alpinum</i> of Packard's list)	*	*	*	*
" palustre, Linn.	*	*	*	*
" lineare, Muhl.	*	*	*	*
" adenocaulon, Hausskn. (<i>E. tetragonum</i> of Lake Mis- tassin's list).....	*	*	*	*
UMBELLIFERÆ.				
Sanicula Marilandica, Linn.			*	*
Sium cicutifolium, Gmelin			*	*
Cicuta maculata, Linn.			*	*
" bulbifera, Linn.			*	*
Ligusticum Scoticum, Linn.			*	*
Archangelica atropurpurea, Hoffm.			*	*
" Gmelin, DC.			*	*
Heracleum lanatum, Michx.			*	*
ARALIACEÆ.				
Aralia hispida, Michx.			*	*
" nudicaulis, Linn.			*	*
COMACEÆ.				
Cornus Canadensis, Linn.	*	*	*	*
" suecica, Linn.	*	*	*	*
" sericea, Linn.	*	*	*	*
" stolonifera, Michx.	*	*	*	*
CAPRIFOLIACEÆ.				
Sambucus racemosa, Linn., var. pubens, Wat.			*	*
Viburnum pauciflorum, Pylaie	*	*	*	*
Linnaea borealis, Gronov.	*	*	*	*
Lonicera involucrata, Banks.	*	*	*	*
" cerulea, Linn.	*	*	*	*
Diervilla trifida, Mœnch	*	*	*	*
RUBIACEÆ.				
Galium asprellum, Michx.			*	*
" trifidum, Linn.	*	*	*	*
" triflorum, Michx.	*	*	*	*
" boreale, Linn.	*	*	*	*
VALERIANACEÆ.				
Valeriana sylvatica, Rich.			*	*
COMPOSITEÆ.				
Eupatorium purpureum, Linn.			*	*
Solidago bicolor, Linn., var. concolor, Torr. and Gray			*	*

	1.	2.	3.	4.
COMPOSITE—Continued.				
<i>Solidago macrophylla</i> , Pursh	*	*	*
" <i>multiradiata</i> , Ait.	*	*	*
" <i>Virgaurea</i> , Linn, var. <i>alpina</i> , Bigel.	*	*	*
" <i>humilis</i> , Pursh	*	*	*
" <i>uliginosa</i> , Nutt.	*	*	*
" <i>Canadensis</i> , Linn	*	*	*
" <i>memoralis</i>	*	*	*
" <i>laucolata</i> , Linn	*	*	*
<i>Aster radula</i> , Ait.	*	*	*
" var. <i>strictus</i> , Gray.	*	*	*
" <i>levis</i> , Linn.	*	*	*
" <i>Lindleyanus</i> , T. and G.	*	*	*
" <i>salicifolius</i> , Ait.	*	*	*
" <i>panicus</i> , Linn.	*	*	*
" <i>paniculatus</i> , Lam.	*	*	*
" <i>junceus</i> , Ait.	*	*	*
" <i>memoralis</i> , Ait.	*	*	*
" <i>umbellatus</i> , Mill.	*	*	*
<i>Erigeron</i> , <i>hessopifolius</i> , Michx.	*	*	*
" <i>multiflorus</i> , Linn.	*	*	*
" <i>Philadelphicus</i> , Linn.	*	*	*
" <i>acris</i> , Linn.	*	*	*
" var. <i>Drebachensis</i> , Blytt.	*	*	*
" <i>Canadensis</i> , Linn.	*	*	*
<i>Antennaria plantaginifolia</i> , Hook.	*	*	*
" <i>dioica</i> , Gaertn.	*	*	*
" <i>alpina</i> , Gaertn.	*	*	*
" <i>Carpathica</i> , R. Br.	*	*	*
<i>Anaphalis margaritacea</i> , Benth. and Hook.	*	*	*
<i>Gnaphalium Norvegicum</i> , Gummer.	*	*	*
" <i>supinum</i> , Vill.	*	*	*
<i>Bidens frondosa</i> , Linn.	*	*	*
" <i>cernua</i> , Linn.	*	*	*
<i>Chrysanthemum arcticum</i> , Linn.	*	*	*
<i>Achillea Millefolium</i> , Linn.	*	*	*
<i>Tanacetum Huronense</i> , Nutt.	*	*	*
<i>Artemisia borealis</i> , Pall., var. <i>spithamea</i> , T. and G.	*	*	*
" " <i>Wormskioldii</i> , Bess.	*	*	*
" <i>Canadensis</i> , Michx.	*	*	*
<i>Petasites palmata</i> , Gray	*	*	*
" <i>sagittata</i> , Gray.	*	*	*
<i>Arnica alpina</i> , Murr.	*	*	*
<i>Senecio vulgaris</i> , Linn.	*	*	*
" <i>aureus</i> , Linn.	*	*	*
" " var. <i>Balsamites</i> , Torr. and Gray.	*	*	*
" " " <i>borealis</i> , Torr. and Gray.	*	*	*
" " " <i>obovatus</i> , Torr. and Gray.	*	*	*
" <i>Pseudo-Arnica</i> , Less.	*	*	*
" <i>frigidus</i> , Less.	*	*	*
<i>Cnicus muticus</i> , Pursh.	*	*	*
<i>Hieracium vulgatum</i> , Fries	*	*	*
" <i>umbellatum</i> , Linn.	*	*	*
" <i>scabrum</i> , Michx.	*	*	*
<i>Taraxacum officinale</i> , Weber.	*	*	*
" " " var. <i>alpinum</i> , Koch.	*	*	*
" " " <i>lividum</i> , Koch.	*	*	*
<i>Lactuca leucophaea</i> , Gray.	*	*	*
" <i>pulegiella</i> , DC.	*	*	*
<i>Prenanthes alba</i> , Linn.	*	*	*
" <i>racemosa</i> , Hook.	*	*	*

	1.	2.	3.	4.
LOBELIACE.E.				
<i>Lobelia Dortmanna</i> , Linn.			*	
" <i>Kalmii</i> , Linn.				*
CAMPANULACE.E.				
<i>Campanula rotundifolia</i> , Linn.		*	*	*
" var. <i>artica</i> , Lange				*
" <i>mitiflora</i> , Linn.		*		
VACCINIACE.E.				
<i>Vaccinium Pennsylvanicum</i> , Lam			*	
" var. <i>angustifolium</i> , Gray.	*	*		
" <i>Canadense</i> , Kalm.		*	*	
" <i>uliginosum</i> , Linn.		*	*	*
" <i>caespitosum</i> , Michx.	*	*	*	
" <i>Vitis-Idaea</i> , Linn.	*	*	*	*
" <i>Oxycoccus</i> , Linn. (<i>Oxycoccus vulgare</i> , Pursh.)	*	*	*	*
" <i>macrocarpon</i> , Ait. (<i>Oxycoccus macrocarpus</i> , Pursh.)	*	*	*	*
<i>Chlozenges hispidula</i> , Torr. and Gray.	*	*	*	*
ERICACE.E.				
<i>Arctostaphylos alpina</i> , Spreng.	*	*		*
" <i>Uva-ursi</i> , Spreng.	*	*	*	
<i>Cassandra calyculata</i> , Don.	*	*	*	
<i>Cassiope hypnoides</i> , Don.	*	*	*	
" <i>tetragona</i> , Don.	*	*	*	
<i>Epigaea repens</i> , Linn.	*	*	*	
<i>Andromeda polifolia</i> , Linn.	*	*	*	
<i>Loiseleuria procumbens</i> , Desv.	*	*	*	
<i>Bryanthus taxifolius</i> , Gray.	*	*	*	
<i>Kalmia angustifolia</i> , Linn.	*	*	*	*
" <i>glauca</i> , Ait.	*	*	*	*
<i>Ledum palustre</i> , Linn.	*	*	*	
" <i>latifolium</i> , Ait.	*	*	*	
<i>Rhododendron Rhodora</i> , Don.	*	*	*	
" <i>Lapponicum</i> , Wahl.	*	*	*	
<i>Pyrola minor</i> , Linn.	*	*	*	*
" <i>secunda</i> , Linn.	*	*	*	*
" var. <i>pumila</i> , Gray.	*	*	*	*
" <i>chlorantha</i> , Swartz.	*	*	*	*
" <i>rotundifolia</i> , Linn.	*	*	*	*
" " var. <i>uliginosa</i> , Gray.	*	*	*	*
" " var. <i>pumila</i> , Hook.	*	*	*	*
<i>Moneses mitiflora</i> , Gray.	*	*	*	*
DIAPENSACE.E.				
<i>Diapensia Lapponica</i> , Linn.	*	*		
PLUMBAGINACE.E.				
<i>Armeria vulgaris</i> , Willd.	*			*
PRIMULACE.E.				
<i>Primula farinosa</i> , Linn.	*			
" <i>Mistassinica</i> , Michx.	*	*	*	*
" <i>Egalikensis</i> , Hornem.	*	*	*	*
<i>Trientalis Americana</i> , Pursh.	*	*	*	*
<i>Lysimachia stricta</i> , Ait.	*	*	*	*

	1.	2.	3.	4.
APOCYNACEÆ.				
<i>Apocynum androsaemifolium</i> , Linn.			*	
GENTIANACEÆ.				
<i>Gentiana serrata</i> , Gummer			*	*
" <i>Anarella</i> , Linn., var. <i>acuta</i> , Hook	*	*	*	*
" <i>propinqua</i> , Rich.	*			
" <i>nivalis</i> , Linn.	*			
" <i>linearis</i> , Fred.	*	*	*	
<i>Pleurogync rotata</i> , Griseb.	*			*
" <i>Carinthiaca</i> , Griseb., var. <i>pusilla</i> , Gray	*			
<i>Halenia deflexa</i> , Griseb.	*			*
<i>Menyanthes trifoliata</i> , Linn.	*	*	*	*
BORRAGINACEÆ.				
<i>Myosotis verna</i> , Nutt.			*	
<i>Mertensia maritima</i> , Don.		*		*
" <i>paniculata</i> , Don.				*
SCROPHULARIACEÆ.				
<i>Mimulus ringens</i> , Linn.			*	
<i>Veronica alpina</i> , Linn.		*		
" <i>scutellata</i> , Linn.		*		
" <i>Americana</i> , Schwein.		*		
" <i>peregrina</i> , Linn.		*		
<i>Castilleja pallida</i> , Kunth.		*		*
" " var. <i>septentrionalis</i> , Gray	*			*
<i>Euphrasia officinalis</i> , Linn.		*	*	*
" " var. <i>Tartarica</i> , Benth.	*			*
<i>Bartsia alpina</i> , Linn.		*		*
<i>Pedicularis Groenlandica</i> , Retz.		*		*
" <i>Lapponica</i> , Linn.		*		*
" <i>euphrasioides</i> , Stephan.		*		*
" <i>palustris</i> , Linn., var. <i>Wlassoviana</i> , Bunge.		*		*
" <i>hirsuta</i> , Linn.		*		*
" <i>flammea</i> , Linn.		*		*
<i>Rhinanthus Crista-galli</i> , Linn.		*	*	*
<i>Melampyrum Americanum</i> , Michx.			*	*
LEPTOTIBULARIACEÆ.				
<i>Utricularia vulgaris</i> , Linn., var. <i>Americana</i> , Gray.			*	
" <i>intermedia</i> , Hayne.			*	
<i>Pinguicula vulgaris</i> , Linn.		*	*	*
" <i>villosa</i> , Linn.		*		
" <i>alpina</i> , Linn.		*		
LABIATÆ.				
<i>Mentha Canadensis</i> , Linn.		*	*	*
" " var. <i>glabrata</i> , Benth.		*	*	*
<i>Lycopus sinuatus</i> , Ell.		*	*	*
<i>Dracocephalum parviflorum</i> , Nutt.		*	*	*
<i>Brunella vulgaris</i> , Linn.		*	*	*
<i>Scutellaria galericulata</i> , Linn.		*	*	*
" <i>lateriflora</i> , Linn.		*	*	*
<i>Lamium amplexicaule</i> , Linn.		*	*	*
<i>Galeopsis Tetralit</i> , Linn.		*	*	*
<i>Stachys palustris</i> , Linn.		*	*	*

	1.	2.	3.	4.
PLANTAGINACEÆ.				
Plantago major, Linn.		*	*	*
" eriopoda, Torr.		*		*
" maritima, Linn.		*		*
CHENOPODIACEÆ.				
Chenopodium album, Linn.		*	*	*
POLYGONACEÆ.				
Polygonum aviculare, Linn.		*	*	*
" " var. borealis, Lange. (new to Canada)			*	*
" amphibium, Linn.			*	*
" cilonode, Michx.			*	*
" Convolvulus, Linn.			*	*
" viviparum, Linn.		*	*	*
" lappathifolium, Ait., var., meanum, Hook.			*	*
Oxyria digyna, Camp.		*		
Rumex verticillatus, Linn.				*
" occidentalis, Wat.		*		*
" maritimus, Linn.		*		*
Koenigia Islandica, Linn.		*		
ELEAGNACEÆ.				
Eleagnus argentea, Pursh.				*
Spekherdia Canadensis, Nutt.				*
SANTALACEÆ.				
Comandra livida, Rich.		*	*	*
URTICACEÆ.				
Urtica gracilis, Ait.			*	*
MYRICACEÆ.				
Myrica Gale, Linn.		*	*	*
BETULACEÆ.				
Betula lutea, Michx.				*
" papyrifera, Michx.		*	*	*
" pumila, Linn.		*	*	*
" glandulosa, Michx.		*	*	*
" nana, Linn.		*	*	*
Alnus incana, Willd.		*	*	*
" viridis, DC.		*	*	*
SALICACEÆ.				
Salix adnophylla, Hook.		*		*
" arctica, R. Br.		*	*	*
" argyrocarpa, Anders.		*		*
" balsamifera, Barratt.		*		*
" candida, Willd.		*	*	*
" chlorophylla, Anders.		*		*
" cordata, Muhl.			*	*
" desertorum, Rich.			*	*
" discolor, Muhl.			*	*

	1.	2.	3.	4.
SALICACEÆ.				
<i>Salix glauca</i> , Linn.	*		*
" <i>herbacea</i> , Linn.	*		*	*
" <i>hucida</i> , Muhl.			*	*
" <i>myrtilloides</i> , Linn.			*	*
" <i>Richardsoni</i> , Hook., var. <i>Macomiana</i> , Bobb.	*			*
" <i>reticulata</i> , Linn.			*	*
" <i>rostrata</i> , Rich.	*	*	*	*
" <i>vestita</i> , Pursh.	*	*	*	*
" <i>Uva-ursi</i> , Pursh.	*	*	*	*
<i>Populus tremuloides</i> , Michx.		*	*	*
" <i>balsamifera</i> , Linn.		*	*	*
EMPETRACEÆ.				
<i>Empetrum nigrum</i> , Linn.	*	*	*	*
CONIFERÆ.				
<i>Thuja occidentalis</i> , Linn.			*	*
<i>Juniperus communis</i> , Linn.	*		*	*
" " var. <i>alpina</i> , Linn.			*	*
<i>Taxus baccata</i> , Linn., var. <i>Canadensis</i> , Gray.		*	*	*
<i>Pinus Banksiana</i> , Lamb.	*	*	*	*
<i>Picea alba</i> , Link.	*	*	*	*
" <i>nigra</i> , Link.	*	*	*	*
<i>Abies balsamea</i> , Marsh.	*	*	*	*
<i>Larix Americana</i> , Michx.				
ORCHIDACEÆ.				
<i>Calypso borealis</i> , Salisb.			*
<i>Corallorhiza innata</i> , R. Br.	*	*	*
<i>Listera cordata</i> , R. Br.			*
" <i>convallarioides</i> , Nutt.			*	*
<i>Spiranthes Romanzoviana</i> , Cham.			*	*
<i>Goodyera repens</i> , R. Br.			*	*
<i>Orehis rotundifolia</i> , Gray.			*	*
<i>Habenaria hyperborea</i> , R. Br.			*	*
" <i>obtusata</i> , Rich.		*	*	*
" <i>dilatata</i> , Gray.			*	*
<i>Cypripedium pubescens</i> , Swartz.			*	*
" <i>acaule</i> , Ait.			*	*
IRIDACEÆ.				
<i>Iris Hookeri</i> , Penny.		*	*
" <i>versicolor</i> , Linn.			*
<i>Sisyrinchium mucronatum</i> , Mx.			*
LILIACEÆ.				
<i>Streptopus amplexifolius</i> , DC.	*		*
" <i>rosens</i> , Michx.	*		*	*
<i>Smilacina stellata</i> , Desf.	*		*	*
" <i>trifolia</i> , Desf.	*		*	*
<i>Mianthemum Canadense</i> , Desf. (<i>M. trifolium</i> of Mistassini list.)	*		*	*
<i>Allium schoenoprasum</i> , Linn.	*		*	*
<i>Tofieldia borealis</i> , Wahl. (<i>T. palustris</i> , Huds.)	*		*	*
" <i>glutinosa</i> , Willd.	*		*	*
<i>Clintonia borealis</i> , Raf.	*		*	*

	3.	4.		1.	2.	3.	4.
JUNCACE.E.							
Juncus filiformis, Linn.	*	*				*	*
" Balticus, Willd., var. littoralis, Engel.	*	*				*	*
" triglumis, Linn.	*	*		*			
" effusus, Linn.	*	*					*
" castaneus, Smith.	*	*		*			
" tenuis, Willd.	*	*				*	*
" bufonius, Linn.	*	*					*
" alpinus, Villars, var. insignis, Fries.	*	*				*	
" nodosus, Linn.	*	*				*	
" Canadensis, J. Gay, var. coarctatus, Engelm.	*	*				*	
Luzula spadicosa, DC.	*	*		*			*
" var. parviflora, Meyer.	*	*		*			*
" spicata, Desv.	*	*		*			*
" comosa, Meyer.	*	*		*			*
" arcuata, Meyer.	*	*		*			*
TYPHACE.E.							
Sparganium simplex, Huds.	*	*		*		*	*
" hyperboreum, Laest., var. Americanum, Beech.	*	*		*		*	*
AROID.E.E.							
Calla palustris, Linn.	*	*				*	
LEMNACE.E.							
Lemna minor, Linn.	*	*					*
ALISMACE.E.							
Sagittaria variabilis, Engelm.	*	*				*	*
NAIDACE.E.							
Triglochin palustre, Linn.	*	*		*		*	*
" maritimum, Linn.	*	*		*		*	*
Potamogeton heterophyllus, Schreb. (Includes two varieties of <i>P. gracilentus</i> in Mistassini list.)	*	*				*	
" pauciflorus, Pursh.	*	*				*	
" pectinatus, Linn.	*	*				*	*
" marinus, Linn.	*	*				*	
" perfoliatus, Linn.	*	*				*	
" pusillus, Linn.	*	*				*	
" rutilans, Wolfgang.	*	*				*	*
" rufescens, Schrad.	*	*				*	
Najas flexilis, Rostk.	*	*				*	
Zannichellia palustris, Linn.	*	*				*	
CYPERACE.E.							
Eleocharis palustris, R. Br.	*	*				*	*
Scirpus lacustris, Linn. (<i>S. validus</i> , Vahl.)	*	*				*	
" sylvaticus, Linn., var. digynus, Boeck. (<i>S. microcarpus</i> , Presl.)	*	*				*	*
" cespitosus, Linn.	*	*		*		*	*
" atrovirens, Muhl.	*	*				*	*
Eriophorum alpinum, Linn.	*	*				*	*
" cyperinum, Linn.	*	*				*	*
" vaginatum, Linn.	*	*		*		*	*
" ruscolum, Fries.	*	*		*		*	*

	1.	2.	3.	3.
CYPERACEÆ—Continued.				
<i>Eriophorum capitatum</i> , Host. (<i>E. Scheuchzeri</i> , Hoppe).....	*			*
" <i>polystachyon</i> , Linn.....	*			*
" " var. <i>angustifolium</i> , Gray.....	*			*
" <i>gracile</i> , Koch.....	*			*
<i>Carex</i> <i>ambusta</i> , Boott.....	*			*
" <i>adusta</i> , Boott.....	*			*
" <i>aquatilis</i> , Wahl. (<i>C. angustata</i> of Mistassini list.).....	*			*
" <i>alpina</i> , Swartz.....	*			*
" <i>arctata</i> , Boott, var. <i>Faxonii</i> , Bailey.....	*			*
" <i>atrata</i> , Linn.....	*			*
" <i>aura</i> , Nutt.....	*			*
" <i>Buxbaumii</i> , Wahl.....	*			*
" <i>canescens</i> , Linn.....	*			*
" " var. <i>alpicola</i> , Wahl.....	*			*
" " var. <i>vulgaris</i> , Bailey.....	*			*
" <i>capillaris</i> , Linn.....	*			*
" <i>castanea</i> , Wahl. (<i>C. deellii</i> , Rudge).....	*			*
" <i>chordorhiza</i> , Ehrh.....	*			*
" <i>concinna</i> , R. Br.....	*			*
" <i>echinata</i> , Murr.....	*			*
" <i>Gmelini</i> , Hook.....	*			*
" <i>gyocrates</i> , Wormsk.....	*			*
" <i>flava</i> , Linn.....	*			*
" <i>lagopina</i> , Wahl.....	*			*
" <i>lanuginosa</i> , Michx.....	*			*
" <i>lenticularis</i> , Michx.....	*			*
" <i>laxiflora</i> , Lam.....	*			*
" <i>limosa</i> , Linn.....	*			*
" <i>maritima</i> , Vahl.....	*			*
" <i>Magellanica</i> , Lam.....	*			*
" <i>microglochin</i> , Wahl.....	*			*
" <i>miliaris</i> , Michx.....	*			*
" <i>Michauxiana</i> , Boeckl.....	*			*
" <i>monile</i> , Tuck.....	*			*
" <i>navina</i> , Fries.....	*			*
" <i>Oederi</i> , Ehrh. (<i>C. glava</i> , L., var. <i>viridula</i> , Bail.).....	*			*
" <i>oligosperma</i> , Michx.....	*			*
" <i>polytrichoides</i> , Muhl.....	*			*
" <i>pratensis</i> , Dreg.....	*			*
" <i>raviflora</i> , Smith.....	*			*
" <i>riparia</i> , W. Curtis.....	*			*
" <i>rotundata</i> , Wahl.....	*			*
" <i>serpoides</i> , Michx.....	*			*
" <i>salina</i> , Wahl.....	*			*
" <i>saxatilis</i> , Linn.....	*			*
" <i>scoparia</i> , Schk.....	*			*
" <i>straminea</i> , Willd.....	*			*
" <i>stricta</i> , Lam., var. <i>decora</i> , Boil.....	*			*
" <i>teretiuseula</i> , Good.....	*			*
" <i>triculata</i> , Boott. (<i>C. rostrata</i> of lists.).....	*			*
" <i>vaginata</i> , Tausch.....	*			*
" <i>vulgaris</i> , Fries., var. <i>hyperborea</i> , Boott.....	*			*
GRAMINEÆ.				
<i>Beckmannia cruceiformis</i> , Host., var. <i>uniflorus</i> , Scrib.....	*			*
<i>Panicum dichotomum</i> , Linn.....	*			*
<i>Hieroclella alpina</i> , Reem. and Schultz.....	*			*
" <i>borealis</i> , Reem. and Schultz.....	*			*
<i>Alopecurus geniculatus</i> , Linn., var. <i>aristulatus</i> , Munro.....	*			*
" <i>alpinus</i> , Smith.....	*			*

	1.	2.	3.	4.
GRAMINEÆ— <i>Concluded</i>				
<i>Stipa Richardsonii</i> , Link.			*
<i>Oryzopsis asperifolia</i> , Michx.			*
<i>Phileum pratense</i> , Linn.			*
" <i>alpinum</i> , Linn.			*
<i>Agrostis scabra</i> , Willd.			*
<i>Cinna pendula</i> , Trin.			*
<i>Calamagrostis Canadensis</i> , Hook.			*
" <i>neglecta</i> , Kunth		*	*
" <i>Laugsdorfii</i> , Trin.		*	*
<i>Deschampsia atropurpurea</i> , Scheele			*
" " var. <i>minor</i> , Vasey.			*
" <i>caespitosa</i> , Beauv.		*	*
" <i>alba</i> , Reem. and Schultz. (<i>D. flexuosa</i> of Mistassin list.)	*	*	*
<i>Trisetum subspicatum</i> , Beauv., var. <i>molle</i> , Gray.			*
<i>Catabrosa aquatica</i> , Beauv.			*
<i>Poa alpina</i> , Linn.			*
" <i>caesia</i> , Smith		*	*
" <i>canisla</i> , All.		*	*
" <i>glumaris</i> , Trin.		*	*
" <i>pratensis</i> , Linn.		*	*
<i>Glyceria Canadensis</i> , Trin.			*
" <i>arundinacea</i> , Kunth.			*
" <i>nervata</i> , Trin.			*
<i>Festuca ovina</i> , Linn.			*
" " var. <i>brevifolia</i> , Wats.		*	*
<i>Bromus ciliatus</i> , Linn.			*
<i>Agropyrum tenerum</i> , Vasey.			*
" <i>violaceum</i> , Lange.		*	*
<i>Hordeum jubatum</i> , Linn.			*
<i>Elymus mollis</i> , Trin.			*
EQUISETACEÆ.				
<i>Equisetum arvense</i> , Linn.	*		*
" <i>pratense</i> , Linn.			*
" <i>sylvaticum</i> , Linn.	*	*	*
" <i>palustre</i> , Linn.			*
" <i>scirpoides</i> , Michx.			*
OPHIOGLOSSACEÆ.				
<i>Botrychium Lunaria</i> , Swartz.	*		*
" <i>Virginicum</i> , Swartz.			*
" <i>ternatum</i> , Swartz., var. <i>lunarioides</i> , Milde			*
FILICES.				
<i>Polypodium vulgare</i> , Linn.			*
<i>Pellaea gracilis</i> , Hook.			*
<i>Pteris aquilina</i> , Linn.			*
<i>Asplenium viride</i> , Huds.			*
" <i>Felix-femina</i> , Bernh.			*
<i>Phlegopteris Dryopteris</i> , Fée.			*
" " var. <i>Robertianum</i> , Dav. (<i>P. edlearca</i> , Fée.)			*
" <i>polypodioides</i> , Fée.			*
<i>Aspidium spinulosum</i> , Swartz., var. <i>dilatatum</i> , Hook.			*
<i>Onoclea sensibilis</i> , Linn.			*
<i>Cystopteris fragilis</i> , Bernh.			*
" <i>montana</i> , Bernh.			*

	1.	2.	3.	4.
FILICES - <i>Concluded.</i>				
Woodsia glabella, R. Br.			*
" Ivensis, R. Br.			*
Osmunda regalis, Linn.			*
" Claytoniana, Linn.			*
LYCOPODIACE.E.				
Lycopodium Selago, Linn.		*	
" lucidulum, Michx.		*	
" annotinum, Linn.			*	*
" obscurum, Linn. (<i>L. dendroideum</i> , Mx.)			*	*
" clavatum, Linn.			*	*
" sabinaefolium, Hook.			*
" complanatum, Linn.			*	*

3.	4.
*
*
*
*
.
.....	* ..*
.....	* ..*
.....	* ..*
.....	* ..*
.....	* ..*
.....	* ..*
.....	* ..*

