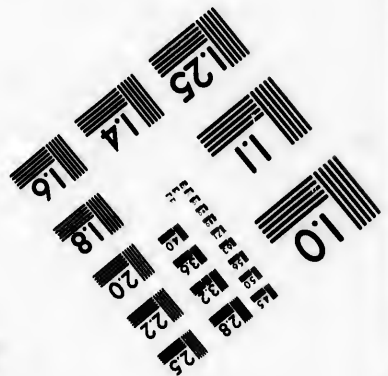
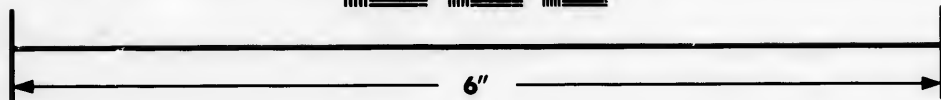
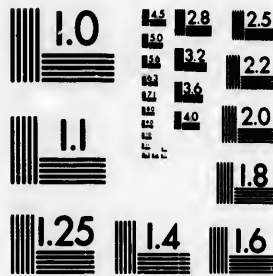


**IMAGE EVALUATION
TEST TARGET (MT-3)**



**Photographic
Sciences
Corporation**

23 WEST MAIN STREET
WEBSTER, N.Y. 14580
(716) 872-4503



**CIHM/ICMH
Microfiche
Series.**

**CIHM/ICMH
Collection de
microfiches.**



Canadian Institute for Historical Microreproductions / Institut canadien de microreproductions historiques



© 1985

Technical and Bibliographic Notes/Notes techniques et bibliographiques

The Institute has attempted to obtain the best original copy available for filming. Features of this copy which may be bibliographically unique, which may alter any of the images in the reproduction, or which may significantly change the usual method of filming, are checked below.

L'Institut a microfilmé le meilleur exemplaire qu'il lui a été possible de se procurer. Les détails de cet exemplaire qui sont peut-être uniques du point de vue bibliographique, qui peuvent modifier une image reproduite, ou qui peuvent exiger une modification dans la méthode normale de filmage sont indiqués ci-dessous.

- | | |
|--|--|
| <input type="checkbox"/> Coloured covers/
Couverture de couleur | <input type="checkbox"/> Coloured pages/
Pages de couleur |
| <input type="checkbox"/> Covers damaged/
Couverture endommagée | <input type="checkbox"/> Pages damaged/
Pages endommagées |
| <input type="checkbox"/> Covers restored and/or laminated/
Couverture restaurée et/ou pelliculée | <input type="checkbox"/> Pages restored and/or laminated/
Pages restaurées et/ou pelliculées |
| <input type="checkbox"/> Cover title missing/
Le titre de couverture manque | <input checked="" type="checkbox"/> Pages discoloured, stained or foxed/
Pages décolorées, tachetées ou piquées |
| <input type="checkbox"/> Coloured maps/
Cartes géographiques en couleur | <input type="checkbox"/> Pages detached/
Pages détachées |
| <input type="checkbox"/> Coloured ink (i.e. other than blue or black)/
Encre de couleur (i.e. autre que bleue ou noire) | <input checked="" type="checkbox"/> Showthrough/
Transparence |
| <input type="checkbox"/> Coloured plates and/or illustrations/
Planches et/ou illustrations en couleur | <input type="checkbox"/> Quality of print varies/
Qualité inégale de l'impression |
| <input checked="" type="checkbox"/> Bound with other material/
Relié avec d'autres documents | <input type="checkbox"/> Includes supplementary material/
Comprend du matériel supplémentaire |
| <input type="checkbox"/> Tight binding may cause shadows or distortion
along interior margin/
Le reliure serrée peut causer de l'ombre ou de la
distorsion le long de la marge intérieure | <input type="checkbox"/> Only edition available/
Seule édition disponible |
| <input type="checkbox"/> Blank leaves added during restoration may
appear within the text. Whenever possible, these
have been omitted from filming/
Il se peut que certaines pages blanches ajoutées
lors d'une restauration apparaissent dans le texte,
mais, lorsque cela était possible, ces pages n'ont
pas été filmées. | <input type="checkbox"/> Pages wholly or partially obscured by errata
slips, tissues, etc., have been refilmed to
ensure the best possible image/
Les pages totalement ou partiellement
obscurcies par un feuillet d'errata, une pelure,
etc., ont été filmées à nouveau de façon à
obtenir la meilleure image possible. |
| <input type="checkbox"/> Additional comments:/
Commentaires supplémentaires: | |

This item is filmed at the reduction ratio checked below/
Ce document est filmé au taux de réduction indiqué ci-dessous.

10X	12X	14X	16X	18X	20X	22X	24X	26X	28X	30X	32X
				<input checked="" type="checkbox"/>							

The copy filmed here has been reproduced thanks to the generosity of:

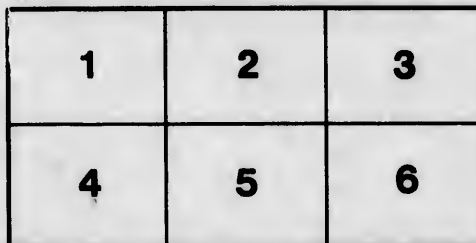
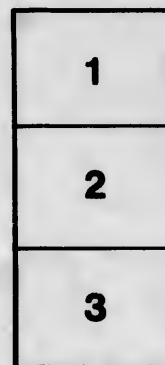
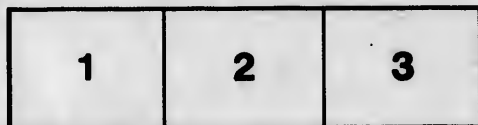
Saint John Regional Library

The images appearing here are the best quality possible considering the condition and legibility of the original copy and in keeping with the filming contract specifications.

Original copies in printed paper covers are filmed beginning with the front cover and ending on the last page with a printed or illustrated impression, or the back cover when appropriate. All other original copies are filmed beginning on the first page with a printed or illustrated impression, and ending on the last page with a printed or illustrated impression.

The last recorded frame on each microfiche shall contain the symbol \rightarrow (meaning "CONTINUED"), or the symbol ∇ (meaning "END"), whichever applies.

Maps, plates, charts, etc., may be filmed at different reduction ratios. Those too large to be entirely included in one exposure are filmed beginning in the upper left hand corner, left to right and top to bottom, as many frames as required. The following diagrams illustrate the method:



L'exemplaire filmé fut reproduit grâce à la générosité de:

Saint John Regional Library

Les images suivantes ont été reproduites avec le plus grand soin, compte tenu de la condition et de la netteté de l'exemplaire filmé, et en conformité avec les conditions du contrat de filmage.

Les exemplaires originaux dont la couverture en papier est imprimée sont filmés en commençant par le premier plat et en terminant soit par la dernière page qui comporte une empreinte d'impression ou d'illustration, soit par le second plat, selon le cas. Tous les autres exemplaires originaux sont filmés en commençant par la première page qui comporte une empreinte d'impression ou d'illustration et en terminant par la dernière page qui comporte une telle empreinte.

Un des symboles suivants apparaîtra sur la dernière image de chaque microfiche, selon le cas: le symbole \rightarrow signifie "A SUIVRE", le symbole ∇ signifie "FIN".

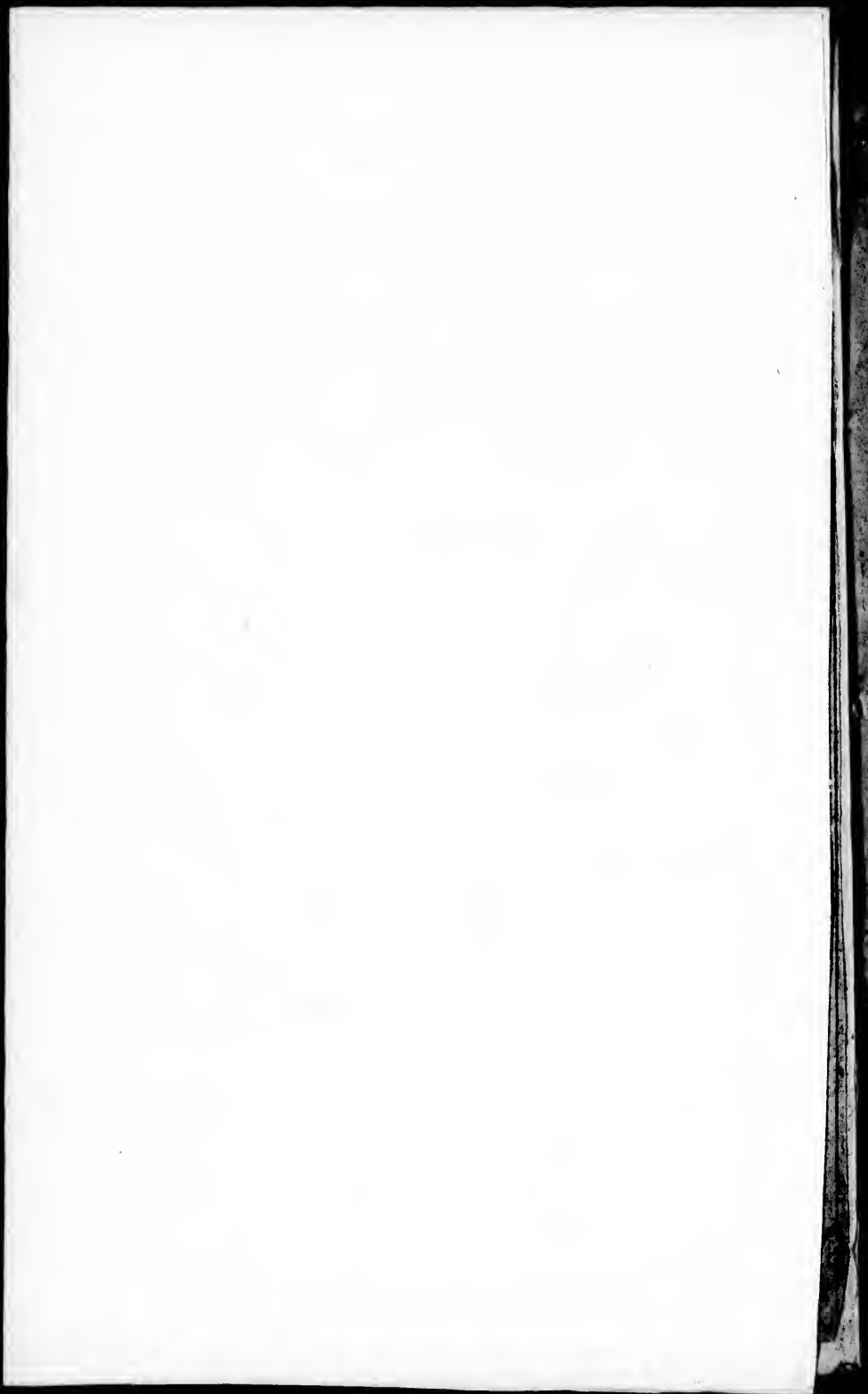
Les cartes, planches, tableaux, etc., peuvent être filmés à des taux de réduction différents. Lorsque le document est trop grand pour être reproduit en un seul cliché, il est filmé à partir de l'angle supérieur gauche, de gauche à droite, et de haut en bas, en prenant le nombre d'images nécessaire. Les diagrammes suivants illustrent la méthode.

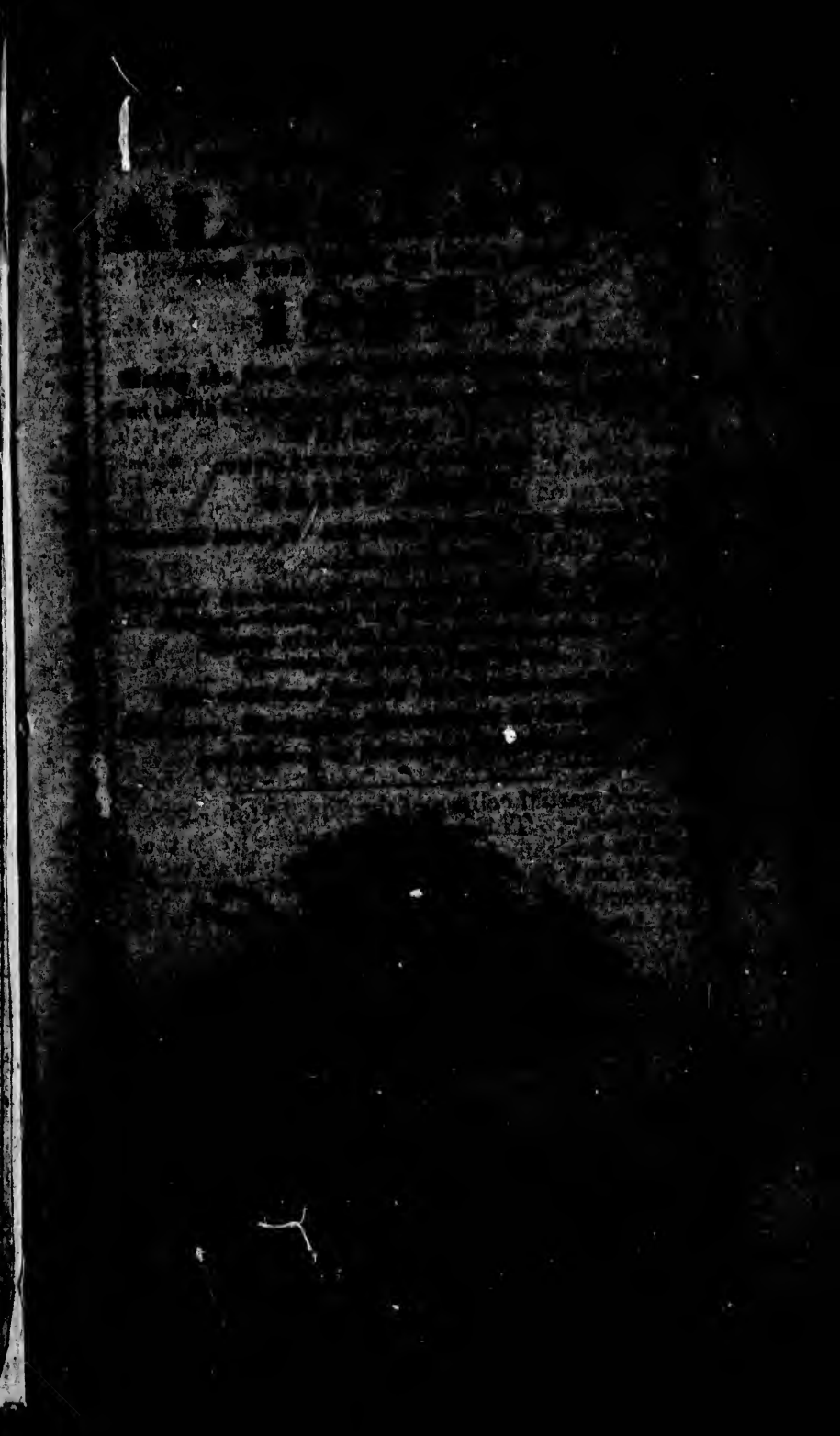
errata
to

palure.
on à



32X





ECLIPSES IN 1837.

There will be five Eclipses this year—three of the Sun and two of the Moon: only one, that of the Moon, on the 13th October, will be visible in this Province.

1st.—A partial eclipse of the Sun, April 5th, at 2h. 42m. which, on account of the time it occurs and the Moon's Southern latitude, will be visible only in a small portion of the Southern Ocean.

2d.—A total eclipse of the Moon, April 20, at 4h. mean time, in the evening—visible throughout the Eastern continent; but ending before the Moon rises in this quarter.

3d.—A partial eclipse of the Sun, May 4th, at 2h. 22m. mean time, in the afternoon. This eclipse, although it takes place when the Sun is above the horizon, will be invisible to us on account of the Moon's Northern latitude. It will be visible on the North-west part of this continent.

4th.—A total eclipse of the Moon on Friday, October 13th. This eclipse begins before the Moon rises, but nearly the whole of it will be visible to us, as follows:—

Beginning of the eclipse, - - -	4h.	45m.	}	Evening.
Moon rises, eclipsed, - - -	5	18		
Beginning of total darkness, - - -	5	51		
Middle of the eclipse, - - -	6	37		
End of total darkness, - - -	7	23		
End of the eclipse, - - -	8	24		



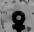
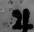









5th.—A partial eclipse of the Sun, October 29th, at 6h. 50m. morning. This eclipse takes place while the Sun is above the horizon, but will be invisible to us on account of the Moon's Southern latitude. It will be visible only in the Southern Ocean and in the Southern extremity of South America.



CHRONOLOGICAL CYCLES FOR 1837.

Domin. Letter, A	Epact 23	Roman Indict. 10	
Golden Number, 14	Solar Cycle 26	Julian period 6550	

THE PLANETS.

  The Sun.	 Venus.	 Jupiter.
    The Moon.	 The Earth.	 Saturn.
 Mercury.	 Mars.	 Herschell.

δ
*
□
△

γ Ar
8 Ta
Π Ge
π Ca
Ω Le
∞ Vi

MO

Septuag.
Sexages.
Shrove
Ash W
Quadra
Mid-L
Palm S
Good F

* Janua
* Feb.
March
April
* May
June
June
Sept.
Sept.

* T
ment
sup

Th
and a
times
rub
and
wind

ASPECTS AND NODES.

δ Conjunction. * Sextile, 60 degrees. □ Quartile, 90 degrees. Δ Trine, 120 degrees.	♁ Ve Quincunx, 120 degrees ♂ Opposition, 180 degrees. Ⓢ Ascending Node. Ⓣ Descending Node.
--	---

SIGNS OF THE ZODIAC.

♈ Aries, <i>Ram</i> , head. ♉ Taurus, <i>Bull</i> , neck. ♊ Gemini, <i>Twins</i> , arms. ♋ Cancer, <i>Crab</i> , breast. ♌ Leo, <i>Lion</i> , heart. ♍ Virgo, <i>Virgin</i> , belly.	♎ Libra, <i>Balance</i> , reins. ♏ Scorpio, <i>Scorpion</i> , secrets. ♐ Sagittarius, <i>Archer</i> , thighs. ♑ Capricornus, <i>Goat</i> , knees. ♒ Aquarius, <i>Waterman</i> , legs. ♓ Pisces, <i>Fishes</i> , feet.
---	--

MOVEABLE FESTIVALS OF THE CHURCH.

Septuagesima Sunday, Jan. 22d. Sexagesima Sunday, Jan. 29th. Shrove Sunday, Feb. 5th. Ash Wednesday, " 8th. Quadragesima Sunday, " 12th. Mid-Lent Sunday, March 5th. Palm Sunday, " 19th. Good Friday, " 24th.	Easter Day, March 26th. Low Sunday, April 2d. Rogation Sunday, " 30th. Ascension Day, May 4th. Whit Sun. or Pentecost, " 14th. Trinity Sunday, " 21st. Corpus Christi Day, " 25th. Advent Sunday, Dec. 3d.
---	---

HOLIDAYS AT PUBLIC OFFICES.

* January 1, New-Year's Day. * Feb. 24, Queen's birth day kept. March 17, St. Patrick. April 23, St. George. * May 28, King's birth day kept. June 24, Saint John. June 26, King's Accession. Sept. 7, King's Coronation. Sept. 29, Michaelmas.	Nov. 30, Saint Andrew. * Dec. 25, Christmas Day. " 26, } Christmas Holidays. " 27, } Ash Wednesday. * Good Friday. Easter Monday. Easter Tuesday.
---	--

* Those thus marked are the only Holidays allowed at the Government Public Offices in this Province, by order of His Excellency. — If any Holiday happens on a Sunday, it will be kept the next day.

TIME FOR GOING THROUGH THE FALLS,

(NEAR THE CITY OF SAINT JOHN.)

The Falls are level (or still water) at about 3½ hours on the *flood*, and at about two and a half on the *ebb*, which makes them passable four times in 24 hours, about ten or fifteen minutes each time. — No other rule can be given, as much depends on the floods in the river St. John, and the time of high water of full sea, which is often hastened by high winds, and in proportion to the height of them.

LIGHT HOUSES.

Commissioners for Light Houses in the Bay of Fundy.
—Robert W. Crookshank, Thomas Barlow, John Ward, junior, and Lauchlan Donaldson, Esquires.

Commissioners for Partridge Island and the Beacon Light Houses.—John Ward, and L. Donaldson, Esquires.

Cape Sable Seal Island Light.—The first Light in approaching the Bay of Fundy, is on the South Point of the Seal Island. This Light is elevated about 80 feet above high water mark, and may be seen in approaching the Island from any point of the Compass. A very dangerous Rock, under water, but upon which the sea always breaks, called *Blonde Rock*, lies about 2 miles S. S. W. by Compass, from the Light House. Between this rock and the island, there are some dangers—the ground is rocky throughout, and large vessels, therefore, ought not to attempt passing between them.

Brier Island Light.—In advancing up the Bay, the next Light is situated on Brier Island, about half a mile N. E. from the N. W. point thereof, with an improved Lantern and Lamp. This Light will therefore be much more beneficial to the trade of the Bay than formerly.

Annapolis Gut Light.—The next Light on the coast of Nova Scotia is placed on the West side of the Gut of Annapolis—from Brier Island North Eastward. The coast is very bold, and not indented; the Light is therefore chiefly intended as a guide into Annapolis Basin. The Lamp and Lantern were renewed in the Spring of 1835, and reflectors furnished, so that this Light is in high order.

NOTE.—The above three Lights are each single, fixed, and show WHITE lights.

Gannet Rock Light.—This Light bears from the Light on Brier Island, N. W. $\frac{1}{2}$ W. 21 miles. It is intended to warn vessels of their approach to a very dangerous range of shoals and ledges, which extend from the Old Proprietor to the Seal Island off Machias, a distance of about 20 miles.

Bearings from the Gannet Rock Light House—

- To the Old Proprietor, which dries at $\frac{1}{2}$ ebb, (very dangerous) E. by N. $\frac{1}{4}$ N. 7 miles.
- “ Black Rock, (always above water 25 feet,) off White Head, N. E. $\frac{1}{4}$ E.
- “ South West Head of Grand Manan, N. W. $\frac{1}{4}$ N.
- “ Northernmost of the Murr Ledges, (dry at two-thirds ebb) N. W. by W. $\frac{1}{4}$ W.
- “ Southernmost of ditto, called St. Mary's Ledge, (always out of water,) S. W. by W. $\frac{1}{4}$ W.
- “ Machias Seal Island Lights, distant about 13 miles, W. by N. $\frac{1}{4}$ N.

NOTE.—Between the northernmost and southernmost of the Murr Ledges, there is a range of dangerous rocks and shoals, many of them

ay of Fundy.
John Ward,

the Beacon
on, Esquires.

approaching the
d. This Light
may be seen in
. A very dan-
ays breaks, call-
pass, from the
are some dan-
ssels, therefore,

the next Light is
the N. W. point
light will there-
an formerly.

of Nova Scotia
m Brier Island
nted; the Light
Basin. The
35, and reflect-

ked, and show

Light on Brier
vessels of their
, which extend
a distance of

use—

roun) E. by N.

White Head, N.

ds ebb) N. W.

(always out of

ss, W. by N.

of the Murr
many of them

always above water, and which extend westward from the Light House about 4 miles; from this range, further westerly, about 3 miles, lies a dangerous breaker, called the Roaring Bull. This may be avoided by keeping three remarkable headlands, near the S. W. end of Grand Manan, open.—The red glass having been removed from the Lantern, there is now a flash light—WHITE—and three times in each minute.

Head Harbour Light.—Next in order after passing Grand Manan, is Head Harbour light. This is placed on the N. E. extremity of Campo Bello, and is a guide to vessels entering the main channel to West Isles, Moose Island, and the inner Bay of Passamaquoddy; it enables vessels also at all times to enter Head Harbour—it is a fixed WHITE light.

Point Le Preau Lights.—Upon this projecting Head Land, two Lights have lately been placed, one above the other, and distant 18 feet. Both lights can be seen from every point of the Compass, where they may be useful—both are fixed and WHITE.

Partridge Island Light.—This light, at the entrance of the River and Harbour of Saint John, having been established upwards of forty years, requires no particular notice, further than that it is a fixed white light.

Beacon Light.—Within Partridge Island, and upon a Spit or bar, which extends about half a mile S. S. E. of Sand Point, and which dries at two thirds ebb, stands the Beacon Tower. Upon this Tower a Light is established, which is eminently useful to the coasting trade of Saint John, and to all other vessels having pilots on board, as it enables them to enter the harbour at all hours of the night. A fixed WHITE light.

Quaco.—A revolving WHITE Light is placed on a small rock off Quaco Head, showing twice full and twice dark in a minute. This Light can be seen from any quarter where a vessel can approach.

West Quoddy Light.—This is an American Light, and is placed on the West side of the entrance into the Saint Croix by Lubeo and Eastport;—a new light house has lately been erected here, and the light much improved.

Two fixed white lights, upon the Muchias Seal Island, were put into operation in 1832—they are elevated about forty-five feet above high water, and bent from each other E. S. E. and W. N. W. distant about 200 feet; by which they will be immediately distinguished from all other Lights upon the coast, (British or American)—the following are the bearings from them, viz. :

- To the Southernmost Murr Ledge, (St. Mary's,) E. S. E. easterly.
- .. Ganost Rock Light, E. by S. $\frac{1}{2}$ S. 13 miles.
- .. Southern Head of Grand Manan, E. by N. $\frac{1}{2}$ N.
- .. Northern Head of Grand Manan, N. E. $\frac{1}{2}$ E.
- .. N. E. Rock, distant 2 miles, N. E. by N.
- .. Little River Head, N. by W.
- .. Libby Island Light House, (American,) N. W. by W.

Vessels in standing in to the Northward, between these lights and the Gannet Rock, should tack or haul off the moment they bring these Lights in one, as they will then not be more than three-fourths of a mile from the Murr Ledges, if more than 5 miles to the E. of the lights.

Fort Point Light, Prospect, (Maine).—The Superintendent of Light Houses in Maine gives notice that the Light House lately erected on Fort Point, Prospect, (Maine), will be lighted for the 1st time on the 1st of October, 1836.

LIGHT HOUSES IN NOVA-SCOTIA.

[In addition to the Light Houses in Nova-Scotia, before noticed, there are the following:]

Sambro—Sambro Island, mouth of Halifax Harbour—a fixed light.

Roseway—M'Nutt's Island, mouth of Shelburne Harbour—two lights, one above the other.

Liverpool—Coffin's Island, mouth of Liverpool Harbour—one revolving light.

Canso—Island, Gut of Canso—two lights, one above the other.

Halifax—Meagher's Beach, Halifax—one light.

Pictou—Entrance to Pictou Harbour—One fixed light for 8 months in the year.

Cross Is'and—Cross Island, near Lunenburg.

Low Point—Entrance to Sidney Harbour—one fixed light.

CAPE BRETON.—A Light House was erected on Low Point,—the Eastern point of the entrance of Sidney Harbour,—in October, 1832, with a fixed light.

A *White Beacon* has been erected on the East Head, leading into Louisburg Harbour, upon the site of the old French Light House—which may be seen at a very considerable distance.

Cape Spear, Newfoundland.—A revolving Light has been erected on Cape Spear, at the entrance of the Harbour of St. John's, Newfoundland, which went into operation on the 1st of September, 1836, and it is to be continued from sunset to sunrise. It will be at an elevation of 275 feet above the level of the sea, and shows a brilliant flash at intervals of one minute, and will be visible above twenty miles.—The stationary light at Fort Amherst is to be continued as usual.

LIGHT HOUSES ON ST. PAUL'S AND SCATARIE.—The Commissioners from the several Provinces to superintend the erection of these much-needed establishments, met at Miramichi last summer. We believe it was determined to have a light house on St. Paul's and one on the east side of Scatarie. No time should be lost in erecting them.

CITY OF SAINT JOHN.

John Robertson, Esquire, Mayor.

William B. Kinnear, Esquire, Recorder.

Henry Porter,
George A. Lockhart,
Thomas Harding,
Gregory Van Horne,
William Y. Theal,
George Bond,

Esquires.

Mr. John Knollin,
Robert Ray,
William Maggarty,
John Sandall,
James F. Lilley,
Joseph Beateay,

King's.
Queen's.
Duke's.
Sidney.
Guy's.
Brook's.

John R. Partelow, Esquire, Treasurer or Chamberlain.

James Peters, junior, Esquire, Common Clerk.

James William Boyd, Esquire, Deputy Common Clerk.

Joshua Bunting, High Constable.—Lewis Fairweather, Benjamin Harrington, Levi Lockhart, Robert M'Elvey, and Patrick Colton, Marshals.

Joshua Bunting, Robert W. Nowlan, Ebenezer Harrington, Benj. Harrington, John Ketchum, Robert M'Elvey, Lewis Fairweather, Edward Bennisson, Leonard Woodworth, William Nixon, Joseph Coram, William Aikins, Alexander Moody, William Munford, James Floyd, John M'Arthur, Levi Lockhart, John Bean, Henry Armstrong, William Follis, and James Irwin, Constables.

Roland Bunting, William Aikins, James Floyd, and William Munford, Hog Reeves on the Eastern side of the Harbour.

Justus Durnford, Henry Hasson, and David W. Craft, Hog Reeves at Carleton.

Wm. Leavitt, Thomas Rawleigh, Nehemiah Merritt, Lewis Burns, Ambrose S. Perkins, William D. Faulke, Thomas Leavitt, Robert Ray, and Joseph Hamm, Port Wardens.

Leverit H. Deveber, James Keator, and William Walker, Assessors of Taxes and Statute Labour.

Thomas Barlow, John Ward, junior, and Zebulon Estey, Assessors of Nightly Watch Tax.

Thomas Baldwin, Collector of Taxes.

Thomas Thompson, Collector of Taxes at Carleton.

Thomas Baldwin, Collector of Statute Labour.

Thomas Thompson, ditto ditto, at Carleton.

Robt. James, Inspector of Cord Wood and Bark in the Market Slip.

Ezekiel Jordan, Collector of Slippage and Wharfage at the Market Slip. Charles Adams, Collector of Slippage at Union Street—S. Gerow, ditto at the North Slip—James Holmes, ditto at Lower Cove.

Seth Seely, Jacob Wilson, and William M'Auley, Measurers of Coals.

S. Gerow, Weigh Master at the North Slip. Kenneth M'Kenzie, ditto at Union Street.

James O. Betts, Inspector of Lime.

Thomas Curam, Collector of Wharfage at the Breakwater.

Joseph Beatteay, Collector of Anchorage.

Thomas Robson, Harbour Master.

Benjamin C. Chaloner and George Waterbery, City Gaugers.

George Waterbery, Gauger and Searcher of Oil.

Joshua Bunting, Fence Viewer—Samuel Clarke do. at Carleton.

Robert C. Minnetto, City Surveyor.

Messrs. Ratchford & Lugin, J. & H. Kinnear, John Kerr & Co. John V. Thurgar, James T. Hanford, Thomas L. Nicholson, and Charles B. Cox, Licensed Auctioneers.

John Boyd, M. D., and G. J. Harding, M. D., Visiting Physicians.

John Leavitt, John Reed, John S. Anthony, George Thomas, John Murray, John Woodley, Daniel Hatfield, Alexander Mills, Abraham Beatteay, William Seely, Edward Murray, William Leavitt, James Reed, John Spears, Price Thomas, John Mills, and Thomas Vaughan, Branch Pilots.

Alexander Reed, Keeper of the Partridge Island Light House.

George Lane, Keeper of the Beacon Light House.

Lavi Lockhart, Looker after Nuisances.

Robert W. Newlan, Pound Keeper—David W. Craft, and Justus Dunsford, Pound Keepers at Carleton.

Samuel Jordan, Alexander M'Grotty, Robert C. Frost, John G. Tobin, Jacob Snider, John M. Campbell, David Whiting, John Jordan, George Cassie, William H. A. Keans, Andrew Hamilton, James H. Fairweather, George A. Garrison, William C. Cody, Stephen B. Hennigar, Joseph Sherwood, Alexander M'Grotty, jun., H. Morehouse, George Crawford, Thomas Fairwoather, and G. W. G. Fayweather, Surveyors of Lumber.

William Barlow, Charles Kay, James Bowen, Thomas Miles, John Ward, James Peacock, Robert Green, Inspectors of Lathwood, Staves, Hoop Poles, &c.

William Barlow and George Waterbery, Cullers of Dried Fish.

William Dunham, James Bowen, Charles Kay, William Barlow, Cornelius Nice, Samuel Strange, James Peacock, Henry Nice, Thomas Miles, Robert Green, Robert T. Britain, John Christopher, jun. and Joseph O. Dunham, Inspectors of Pickled Fish.

Charles Davies, Edward Lake, William Bookwood, and Thomas Marjoribanks, Inspectors of Flour.

John Knollin and David S. Marshall, Fire Inspectors.

Fyler Dibblee, Chief Engineer of Fire Engines.

Fyler Dibblee, Superintendent of Carts.

George Matthew, Gilbert T. Ray, and Walter Drake, Overseers of the Poor. William Nisbet, Keeper of the Alms House.

George Bond, George D. Robinson, and George Matthew, Trustees of Schools.

Daniel Ansley, John Ward, jun., Thomas Harding, John R. Partelow, Gregory Vau Horne, Robert Robertson, A. S. Perkins, George

Harding, Thomas Barlow, James T. Hanford, George Bond, James F. Lilly, John Kinnear, Isaac Woodward, William Mullin, John V. Thurgar, John Cunningham, Thomas Leavitt, George D. Robinson, and William Mackay, Firewardens.

CITY OF SAINT JOHN SAVING'S BANK.

His Excellency the Lieutenant-Governor, Patron.

TRUSTEES:

Honorable Ward Chipman, L. L. D.
Hugh Johnston,
Thomas Millidge,
John R. Partelow,
Thomas Barlow,
John Ward, junier,
George D. Robinson,

} Esquires.

The Bank of New-Brunswick, Treasurer.

Daniel Jordan, Esquire, Cashier and Register.

CHAMBER OF COMMERCE.

L. Donaldson, Esquire, President.

Robert Rankin, and E. DeW. Ratchford, Esquires, Vice-Presidents.

Isaac Woodward, Esquire, Secretary and Treasurer.

William Walker, John Robertson, F. A. Wiggins, William Mackay, John Wishart, and Isaac L. Bedell, Esquires.

The above Gentlemen, together with the Members of the House of Assembly for the City and County, (being the non-elective part) compose the Committee for the ensuing year.

Thomas Leavitt, Esquire, *Consul of the United States.*

Solomon Nichols, Esquire, *Agent for Lloyd's.*

Thomas Leavitt, Esquire, *Agent for the Marine Insurance Companies of New-York.*

Public Grammar School in the City of Saint John.

President—The Reverend the Rector of Saint John.

DIRECTORS:

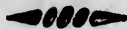
The Mayor. The Recorder. Reverend I. W. D. Gray,
The Hon. Ward Chipman, L. L. D. Neville Parker, Esquire,
The Honorable Robert Parker, Reverend Robert Wilson, A. M.
The Honorable William Black, Thomas Paddock, Esquire, M. D.

Treasurer and Clerk—William Wright, Esquire.

Principal—Mr. James Paterson.

English Teacher—Mr. William Ewing.

The Branches taught in this Seminary, are Latin, Greek, Mathematics, Geography, the Use of the Globes, Writing, Arithmetic, and Elocution. The pupils of the senior Classes, have, besides, daily exercises in Composition, to initiate them into the knowledge of English Grammar, and the correct and elegant use of their native tongue.



Saint John Church of England Sunday School.

Patron—His Excellency the Lieutenant-Governor.

President—The Rector of Saint John.

Superintendent and Secretary—The Curate of Saint John.

Directors—The Church Wardens.

Saint John District Committee of the Society for Promoting Christian Knowledge.

President—The Reverend Benjamin G. Gray, D. D.

Vice Presidents—Honorable Chief Justice Chipman, Honorable William Black, and William Scovil, Esquire.

Treasurer—William H. Robinson, Esquire.

Secretary—Reverend I. W. D. Gray.

Standing Committee—R. W. Crookshank, Esquire, and Mr. L. H. DeVeher.

Terms of admission to the Parent Society—One Guinea donation; and One Guinea annually.

„ „ To the District Committee—Half a Guinea per annum.

☞ The Depository of Books and Tracts is at Mr. W. D. W. Hubbard's Store, Prince William Street.

SAINT JOHN SOCIETY LIBRARY.

Honorable Chief Justice Chipman, L. L. D. President.

Neville Parker, Esquire, Vice-President.

W. H. Street, and T. Millidge, Esquires, Committee.

Robert F. Hazen, Esquire, Secretary and Treasurer.

Mr. E. Fitzgerald, Librarian.

☞ Library hours from 12 to 1 o'clock, every day.



SAINT GEORGE'S SOCIETY.

H. Bowyer Smith, Esquire, President.

John V. Thurgar, Esquire, Vice-President.

Isaac L. BedeH, Esquire, Treasurer.

Mr. Anthony R. Truro, Secretary.

SAINT ANDREW'S SOCIETY.

John Robertson, Esquire, President.

James Kirk, Esquire, Vice-President.

John Wishart, Esquire, Treasurer.

Peter Duff, Esquire, Secretary.

SAINT PATRICK'S SOCIETY.

John Kinnear, Esquire, President.
William M'Cannon, Esquire, Vice-President.
William Hutchinson, Esquire, Treasurer.
Mr. James Dysart, Secretary.

ALBION SOCIETY.

Mr. Samuel Holman, President.
Mr. Charles-H. Grocock, Vice-President.
Mr. Henry Buxton, Treasurer.
Mr. George Thomas, Secretary.

BRITISH AMERICAN SOCIETY.

John Ward, Esquire, President.
Stephen Humbert, } Esquires, Vice-Presidents.
George D. Robinson, }
Mr. Ambrose S. Perkins, Treasurer.
Mr. Thomas S. Estey, Secretary.

FRIENDLY SONS OF ERIN.

William Mallin, Esquire, President.
Mr. Joseph M'Pherson, Vice-President.
Mr. James Gilday, Treasurer.
Mr. John Gallivan, Secretary.

ORPHAN BENEVOLENT SOCIETY.

Mr. John Doherty, President.
Mr. James Gallagher, Vice-President.
Mr. Patrick Poof, Treasurer.
Mr. Hugh Sharkey, Secretary.

TEMPERANCE SOCIETY.

President—The Reverend Benjamin Grey, D. D.
Vice-President—The Honorable Judge Parker.
Secretary and Treasurer—Mr. George Blatch.

FRIENDLY FIRE CLUB.

Robert W. Crookshank, Esquire, President.
James Hendricks, Esquire, Vice-President.
Thomas L. Nicholson, Esquire, Secretary and Treasurer.

UNION FIRE CLUB.

Daniel Leavitt, Esquire, President.
Benjamin L. Peters, Esquire, Vice-President.
John Wishart, Esquire, Treasurer.
Mr. Stephen K. Foster, Secretary.

PROTECTION FIRE CLUB.

Mr. Douglas Clarke, President.
Mr. Frederick A. Wiggins, Vice-President.
Mr. Edmund A. Price, Secretary and Treasurer.

PARISH OF PORTLAND.

Robert Rankin, John C. Waterberry, and James Travis, Overseers of the Poor.

John Owens, James Cody, and Israel Merritt, Assessors of Taxes.
Hugh Sharkey and John Johnston, Collectors of Taxes.

Jas. Stephenson, Robert Bowes, John Robinson, John Dalton, Chas. Quigley, jun., Jas. Burley, John Johnston, Hugh Sharkey, Jas. Stephenson, jr. John O'Keefe, Dan. M'Coy, Saml. Williams, Constables.

John Robinson, James Stevenson, Jas. Burley, Jas. Stevenson, jun. Edward Hughes, Robert Bowes, John Broughfield, Wm. Moyes, John Dalton, Richard Ritchie, and Samuel Williams, Hog Reeves.

James Burley, Michael Campbell, Edward Hughes, James Stevenson, Patrick Harrigan, Robert Bowes, Hugh Dunn, William Scott, and Richard Daley, Pound Keepers.

Ephraim Sentil, Thomas M'Faddin, William Patterson, Thomas Bean, William Robertson, Thomas Garnett, William Bean, senior, Patrick Harrigan, Winthrop Robinson, Thomas Long, Morris Whooten, Henry Graham, John Morrison, William Daley, Griffith Morrison, James M'Ninch, Richard Daley, and Hugh Ryan, Fence Viewers.

Jeremiah Gove, John W. Scott, David Roberts, John Morrison, Gilbert Jordan, junior, Joseph Lingley, Michael Fisher, Robert Cunnard, James Flewelling, Robert Stevens, Francis Jordan, William W. Jordan, George Eagles, George Cassie, Alexander Seely, and Thomas M'Mackin, Surveyors of Lumber.

Robert Payne, Israel Merritt, and James Cody, Trustees of Schools.
Barnes Travis, Superintendent of the Ferry Landing.

James Reynolds, Ferryman.

Hugh Sharkey, Town Clerk and Clerk of the Market.

PARISH OF LANCASTER.

John Vaughan, Joseph Boggs, Charles Ford, Overseers of the Poor.
Isaac Clarke, John Gillies, and Calvin L. Hatheway, Assessors of Taxes.—John Harding, Collector of Taxes.

Isaac Clarke, John Gillies, and Wm. Wilson, Trustees of Schools.

John Dunham, J. Kelly, John Harding, and I. Finemore, Constables.

William Tilton, John Vaughan, and Henry Lord, Fence Viewers.

John Perry and Thomas Walsh, Hog Reeves.

William Tilton and John Harding, Pound Keepers.

William Wilson, Town Clerk, and Clerk of the Market.

PARISH OF SAINT MARTINS.

Simon Vaughan, Thos. Stevens, and Wm. Vail, Overseers of Poor.

Geo. Marr, Joseph Brown, and David Grandall, Trustees of Schools.

George Marr, David Vaughan, and David Bradshaw, Assessors of Taxes.

Daniel Brown and Andrew Newcomb, Collectors of Taxes.

Daniel Brown, sen. Dan. Trites, and Andrew Newcomb, Constables.

Philip Black, Henry Mosher, and John Ryan, Fence Viewers.

Henry Britain, Pound Keeper.

George Marsters, Town Clerk and Clerk of the Market.

ND.

Travis, Overseers

Assessors of Taxes.

Taxes.

John Dalton, Chas.

Sharkey, Jas. Ste-

liams, Constables,

Wm. Stevenson, jun.

Wm. Moyes, John

g Reeves.

ee, James Steven-

n, William Scott,

Patterson, Thomas

am Bean, senior,

ng, Morris Who-

ing, Griffith Morri-

son, Fence Viewers.

John Morrison,

isher, Robert Cur-

rdan, William W.

ceely, and Thomas

Trustees of Schools.

ing.

Market.

ER.

Assessors of the Poor.

way, Assessors of

Trustees of Schools.

more, Constables.

Fence Viewers.

Market.

TINS.

Assessors of Poor.

Trustees of Schools.

law, Assessors of

of Taxes.

comb, Constables.

nce Viewers.

Market.

RATES OF CARTAGE IN SAINT JOHN.

	First District.	Second District.	Third District.	Fourth District.	Fifth District.
	s. d.	s. d.	s. d.	s. d.	s. d.
1. For a load of Wood, (quarter of a cord)	7½	0 9	10½	1 0	1 1½
2. For a load of Coals, (half a chaldron),	1 3	1 4½	1 6	1 7½	1 9
3. For a load containing 15 bushels Grain, Salt, Potatoes, or any other articles measured at loading or unloading, except coals,	-	10½	1 0	1 1½	1 3 1 4½
4. For a pipe of Wine, Gin, or Brandy, and housing within the door of the first floor,	3 0	3 1½	3 3	3 4½	3 6
5. For a puncheon of Rum, or a tierce of Sugar, from 7 to 10 cwt. and housing,	-	1 6	1 7½	1 9	1 10 2 0
6. For a pun. Molasses, a hhd. Sugar, of 10 cwt. or upwards, or a hogshead Tobacco, and housing,	-	2 0	2 1½	2 3	2 4½ 2 6
7. For a hhd. or pun. Cider, or a load of Dried Fish of 15 cwt. or a common load of household goods, and storing,	-	1 3	1 4½	1 6	1 7½ 1 9
8. For a load of Shingles, Hoop Poles, Staves, Heading, Treennils, smoked Fish in boxes, Salmon in kids, Dry Goods, or a load of any other articles not herein mentioned, or a hogshead of Lime, or a hhd. or crate of Earthenware, or two tierces Earthenware, a hhd. Dried Fish, 2 tierces Coffee, or quantity in bags, not exceeding 12 cwt. or a load containing 6 barrels Flour, or 5 brls. Sugar, Fish, Beef, Pork, Turpentine, or Cider, or half a ton of Iron, or the same quantity of Cordage, in coils not exceeding 4 cwt. or a load of any articles not herein mentioned,	-	0 9	10½	1 0	1 1½ 1 3
9. For a 64 gallon cask of Wine, Rum, Gin, Brandy, Molasses, or Porter, or for a load of Sand, Gravel, or Stones, or a load of 4 brls. of any spirituous liquor, or Molasses,	-	1 0	1 1½	1 3	1 4½ 1 6
10. For Cables and Cordage in coils above 1 cwt. or if to coil, per ton, or for Hay, loose, per ton,	-	5 0	5 3	5 6	5 9 6 0
11. For Hay, screwed, per ditto,	-	2 6	2 8	2 10	3 0 3 2
12. For Bricks, per thousand,	-	4 0	4 3	4 6	4 9 5 0
13. For Lumber, per thousand feet,	-	3 0	3 3	3 6	3 9 4 0
14. For the cartage of any article or articles, not exceeding half a load,	-	0 6	0 7½	0 9	10½ 1 0

The First District to comprise all that part of the City, between the south line of Pond-street and north line of Duke-street, which lies to the westward of the east line of Mill-street, Dock-street, and that part of Prince William-street, between the north line of the brick building belonging to W. T. Peters, Esq. (northward of the Market square,) and

the North line of Duke-street, and including King-street to the westward of the west line of Germain-street.

Second District to comprise all that part of the City between the North line of Union-street, and South line of St. James's street, which lies without or beyond the First District, to the Westward of the East line of Charlotte-street.

Third District to comprise all that part of the City which lies without or beyond the said second District to the Westward of the East line of Sidney-street.

Fourth District to comprise all that part of the City, lying without or beyond the said Third District, to the Westward of the East line of Garmarthen-street.

Fifth District to comprise all that part of the City, lying without or beyond the said Fourth District.

PUBLIC PORTERS AND HAND-CART MEN.

For loading, carrying, and housing, any goods or any other articles on any hand-cart, from the Market Slip in King's and Queen's Wards, or from any other place within the limits of the first district, to any other place within the said several five districts, the rates of prices are as follow:—For the first district, three pence; second district, three pence half penny; third district, four pence; fourth district, four pence half penny; fifth district, five pence.

Rates of Pilotage,

Established by a Law or Ordinance of the Common Council of the City of Saint John, passed July, 1826.

Five Shillings per foot, for bringing any ship or vessel into the Harbour of Saint John, and mooring her in a safe place or berth, or securing her alongside of one of the wharves; and five shillings per foot for removing and taking any ship or vessel out of the harbour.

In cases where Pilots shall be detained on board of vessels, under and by virtue of the Quarantine or Health Laws of the Province, they shall be entitled to demand and receive from the Masters of such vessels, the sum of Ten Shillings per day, for every day of such detention, in addition to the allowance aforesaid.

Coasting vessels, going from one part of the Bay of Fundy to another, —British or Foreign steam-boats, or British vessels drawing under six feet of water, are not compelled to take Pilots: when employed, they are to be paid according to the rate above mentioned.

For removing vessels from any mooring ground to any wharf, or from any wharf to any mooring ground, or from one wharf to another wharf, and seeing them properly moored or secured, the following rates:—For vessels not exceeding 100 tons, 7s. 6d; for vessels over 100 and not exceeding 200 tons 10s.; for vessels over 200 tons and not exceeding 300 tons 15s.; and for all vessels over 300 tons the sum of 20s.

1st
"
● Ne
D Fi
D. W.
D. M.
1 SU
2 Mo
3 Tu
4 We
5 Th
6 Fri
7 Sa
8 SU
9 Mo
10 Tu
11 We
12 Th
13 Fri
14 Sa
15 SU
16 Mo
17 Tu
18 We
19 Th
20 Fri
21 Sa
22 SU
23 Mo
24 Tu
25 We
26 Th
27 Fri
28 Sa
29 SU
30 Mo
31

ing-street to the west-

the City between the
James's street, which
Westward of the East

City which lies with-
ward of the East line

e City, lying without
rd of the East line of

ity, lying without or

CART MEN.

or any other articles
and Queen's Wards,
first district, to any
e rates of prizes are
econd district, three
district, four pence

on Council of the
836.

vessel into the Har-
or berth, or securing
gs per foot for re-
ear.

vessels, under and
rovince, they shall
of such vessels, the
stention, in addi-

Fundy to another,
rawing under six
employed, they are

ny wharf, or from
to another wharf,
wing rates:—For
100 and not ex-
ot exceeding 300
20.

“ Let us discourse of the celestial signs,
Where *Sol* the season of the year confines;
Mount up, my Muse, that I may contemplate
The wond'rous works GOD did for Man create;

MOON'S PHASES.

	D. H. M.		D. H. M.
● New Moon	6 6 50n.	○ Full Moon,	21 2 49a.
☾ First quarter,	13 0 15a.	☾ Last quarter,	29 1 34a.

D. M.	D. W.	CALENDAR, &c.	☉ Ris. & Sets h. m. h. m.	☽ Sun's dec. S d. m.	○ R. & S. h. m.	○ Pl	High water h. m.
1	SU	1st Sun. after Christ.	7 36 4 32	22 59	1 19	se	5 49
2	Mo	[Circumcision	7 36 4 33	22 54	2 29	se	7 4
3	Tu	<i>Mild winter</i>	7 36 4 34	22 49	3 48	th	8 21
4	We	<i>weather.</i>	7 36 4 35	22 42	5 7	th	9 22
5	Th		7 35 4 36	22 36	6 20	kn	10 10
6	Fri	Epiphany.	7 35 4 37	22 29	Sets. kn		11 20
7	Sat	<i>Stormy.</i>	7 35 4 38	22 21	5 23	le	Morn
8	SU	1st Sun after Epiph.	7 35 4 39	22 13	6 47	le	0 35
9	Mo	[Lucian.	7 35 4 40	22 5	8 9	fe	1 22
10	Tu	<i>Snow or perhaps rain</i>	7 35 4 41	21 56	9 27	fe	2 6
11	We	Linneaus died, '78.	7 34 4 42	21 46	10 40	he	2 45
12	Th	<i>about</i>	7 34 4 43	21 36	11 53	he	3 36
13	Fri	St. Hillary.	7 34 4 44	21 26	Morn	he	3 50
14	Sat	Dr. Halley died, 1742	7 33 4 45	21 15	1 0	nd	5 6
15	SU	2d Sun. after Epip.	7 33 4 46	21 4	2 3	ne	6 11
16	Mo	Bat. of Corunna, 1809	7 33 4 47	20 53	3 14	ar	7 29
17	Tu	<i>this time.</i>	7 32 4 48	20 41	4 20	ar	8 40
18	We	Prisca.	7 32 4 49	20 30	5 21	ar	9 36
19	Th	<i>Pleasant—</i>	7 31 4 50	20 17	6 18	br	10 31
20	Fri	Fabian. <i>for the</i>	7 31 4 52	20 4	7 5	hr	11 9
21	Sat	Ag. Louis xvi. beh.	7 30 4 53	19 50	Rises	ha	11 46
22	SU	Septuages. Sun. Vin.	7 29 4 55	19 36	5 44	ha	0 4
23	Mo	<i>season.</i>	7 28 4 56	19 22	6 50	ha	0 34
24	Tu	Win. Pitt died 1806.	7 27 4 58	19 8	7 54	be	1 3
25	We	Conv. of St. Paul.	7 26 4 59	18 53	8 57	be	1 33
26	Th	<i>Cold and</i>	7 25 5 1	18 38	10 1	be	2 4
27	Fri	D. Sussex horn '73.	7 24 5 3	18 23	11 7	re	2 39
28	Sat	[died, 1820	7 23 5 4	18 7	Morn	re	3 19
29	SU	Sexag. Sun. Geo. III.	7 22 5 5	17 51	0 14	se	4 2
30	Mo	Charles I. beh.	7 21 5 6	17 35	1 27	se	5 1
31	Tu	<i>stormy.</i>	7 20 5 7	17 18	2 43	th	6 21

Hold, aged Winter, hold thy mighty hand!
 And view how things are now at thy command;
 The fields are bare, trees dry, no leaves them grace,
 The fowls and cattle shrink, and human race.
 Vesta's afflicted, Flora cannot see,
 And Tellus weeps at Boreas' cruelty.

MOON'S PHASES.

D. H. M. D. H. M.
 ● New Moon, 5 5 12m. | ○ Full Moon, 20 9 27m.
 ☽ First quarter, 12 4 42m. | ☾ Last quarter, 29 0 34m.

D. M.	D. W.	CALENDAR, &c.	☺		☼		☽		R. S.	Pl	High water
			Ris.	Sets	dec.	S & S.	h.	m.			
1	We	Battle Brienne, 1814.	7 19 5	8 17 1	4 0	th	7 55				
2	Th	Pur. B. V. Mary. Can.	7 18 5	9 16 43	5 13	kn	9 13				
3	Fri	St. Blas. [dilemnas.	7 17 5	11 16 25	6 18	kn	10 16				
4	Sat	Cessation hostil. '93.	7 15 5	13 16 8	7 8	le	11 10				
5	SU	Shrove Sunday.	7 14 5	14 15 49	Sets.	le	11 59				
6	Mo	Dr. Priestley d. 1814.	7 18 5	16 15 31	7 5	fe	0 20				
7	Tu	[Scots beh. 1597.	7 11 5	17 15 12	8 17	fe	1 6				
8	We	Ash Wed. Mary Q.	7 10 5	18 14 53	9 32	he	1 39				
9	Th	Canada ceded to Eng.	7 9 5	20 14 34	10 44	he	2 16				
10	Fri	Stormy. [1763.	7 8 5	21 14 15	11 53	ne	2 52				
11	Sat	French t'k Rome, '99.	7 7 5	23 13 53	Morn	ne	3 33				
12	SU	First Sunday in Lent.	7 5 5	24 13 35	1 3	ar	4 31				
13	Mo	Chol. in Lond. 1832.	7 4 5	26 13 15	2 11	ar	5 14				
14	Tu	Valentine. Jervis's	7 2 5	27 12 55	3 14	ar	6 39				
15	We	[victory, 1797.	7 0 5	29 12 34	4 13	br	8 4				
16	Th	Moderate	6 58 5	30 12 13	5 4	br	9 17				
17	Fri	and fine	6 56 5	31 11 53	5 46	br	10 14				
18	Sat	M. Luther d. 1546.	6 54 5	32 11 31	6 21	ha	10 51				
19	SU	2d Sunday in Lent.	6 53 5	33 11 10	6 49	ha	11 24				
20	Mo	for the season.	6 52 5	35 10 49	Rises.	ha	11 55				
21	Tu	Trinidad taken, 1797.	6 51 5	36 10 27	6 47	be	0 10				
22	We	Washington b. 1732.	6 50 5	38 10 5	7 55	be	0 40				
23	Th	Blustering	6 49 5	39 9 43	9 0	re	1 16				
24	Fri	Matthias. D. Camb. h.	6 47 5	40 9 21	10 7	re	1 39				
25	Sat	Chris. Wren d. 1723.	6 45 5	41 8 59	11 16	re	2 14				
26	SU	3d Sunday in Lent.	6 43 5	43 8 37	Morn	se	3 2				
27	Mo	[Bona. left Elba, '15.	6 41 5	45 8 14	0 31	se	3 41				
28	Tu	and cold.	6 40 5	46 7 51	1 45	th	4 42				

Venus will be Morning Star till May 18; then Evening Star.

3d Month. MARCH. 1887.

Happy the man, of mortals happiest he,
 Whose quiet mind from vain desires is free;
 Whom neither Hopes deceive, nor Fears torment,
 But lives at peace, within himself content.

MOON'S PHASES.

● New Moon, 6 3 33a. | ○ Full Moon, 22 2 0m.
 ☽ First quarter, 13 11 12a. | ☾ Last quarter, 29 8 21m.

M.
 27m.
 34m.

High
 water
 h. m.

7 53
 9 13
 10 16
 11 10
 11 59
 0 20
 1 6
 1 39
 2 16
 2 52
 3 33
 4 31
 5 14
 6 39
 8 4
 9 17
 10 14
 10 51
 11 24
 11 55
 0 10
 0 40
 1 16
 1 39
 2 14
 3 2
 3 41
 4 42

D. M.	D. W.	CALENDAR, &c.	Ris. & Sets h. m. h. m.	Sun's dec. S d. m.	○ R. & sets h. m.	○ Pl	High water h. m.
1	We	St. David. Showers	6 37 5 49	7 28	2 57	th	6 7
2	Th	J. Wesley died '91.	6 35 5 50	7 5	4 4	kn	7 40
3	Fri	[Chad.	6 33 5 51	6 42	4 58	kn	9 3
4	Sat	of rain, hail,	6 31 5 53	6 19	5 41	le	10 5
5	SU	4th or Mid Lent Sun.	6 29 5 54	5 56	6 13	le	10 55
6	Mo	sleet or snow,	6 27 5 55	5 33	Sets.	fe	11 33
7	Tu	Perpetua. Lord Col.	6 26 5 57	5 8	7 57	fe	Morn
8	We	[lingwood d. 1910.	6 24 5 59	4 46	8 22	he	0 17
9	Th	may be looked for.	6 23 5 59	4 22	9 33	he	1 9
10	Fri	Bat. of Aboukir, 1701	6 21 6 03	3 59	10 45	ne	1 24
11	Sat	Fine [Mar.	6 19 6 18	35	11 54	ne	2 20
12	SU	5th S. in Lent. Greg.	6 17 6 23	12	Morn	ar	3 0
13	Mo	Pl. Ursinus disc. 1781	6 16 6 32	48	1 2	ar	3 49
14	Tu	Sir J. Byng shot, 1757	6 14 6 52	24	2 5	br	4 48
15	We	March weather.	6 13 6 62	1	2 59	br	6 11
16	Th	Battle Guilford, '81.	6 10 6 81	37	3 45	br	7 37
17	Fri	St. Patrick. Snow	6 8 6 91	13	4 23	ha	8 46
18	Sat	Edw. K. W. Sax.	6 6 6 110	50	4 53	ha	9 39
19	SU	6th S. in Lent—Palm	6 4 6 120	26	5 18	bo	10 20
20	Mo	showers. [Sunday	6 2 6 130	2	5 39	be	10 54
21	Tu	Cranmer burnt 1556.	6 0 6 14	N. 20	6 1	be	11 25
22	We	Sir I. Newton d. 1797	5 59 6 150	44	Rises.	fe	11 56
23	Th	Keeps cool.	5 57 6 161	8	7 58	re	0 10
24	Fri	Good Friday.	5 55 6 191	32	9 8	se	0 40
25	Sat	Annus. Lady day.	5 53 6 191	54	10 21	se	1 13
26	Su	Easter Day.	5 51 6 202	19	11 36	th	1 51
27	Mo	Easter Mond. Grows	5 49 6 222	42	Morn	th	2 37
28	Tu	Easter Tuesday.	5 47 6 233	6	0 49	kn	3 2
29	We	warmer.	5 45 6 243	29	1 54	kn	4 38
30	Th	Allies ont. Paris, 1814	5 44 6 253	53	2 53	kn	5 56
31	Fri	Heavy rains.	5 42 6 264	16	3 39	le	7 30



4th Month.

APRIL.

1837.

No. Route up, sweet Flora, early in the morn,
And rapidly the spacious Fields adorn
With divers colours, pleasant to be seen;
Let Keets be arrayed like to a Queen.

MOON'S PHASES.

D. H. M. D. H. M.
 ● New Moon, 5 2 24m. | ○ Full Moon, 20 3 43a.
 ☽ First Quarter, 12 6 17a. | ☾ Last Quarter, 27 1 1a.

D. M.	D. W.	CALENDAR, &c.	☾ Rig. & Sets h. m. h. m.	SUN'S dec. N d. m.	○ R. & sets h. m.	○ P l	High water h. m.
1	Sat	<i>Clear and pleasant.</i>	5 40 6 28	4 38	4 16	le	8 48
2	SU	1st Sun after Easter.	5 38 6 29	5 2	4 44	fe	9 45
3	Mo	Bishop Heber d. 1826	5 36 6 31	5 24	5 8	fe	10 31
4	Tu	St. Am. Goldsmith d.	5 34 6 32	5 47	5 31	he	11 10
5	We	<i>Wet</i> [1774.	5 33 6 33	6 10		sets. he	11 47
6	Th	Old Lady Day.	5 31 6 34	6 34	8 22	ne	0 5
7	Fri	<i>and chilly.</i>	5 29 6 35	6 56	9 34	ne	0 40
8	Sat	High tides.	5 28 6 36	7 18	10 45	ar	1 16
9	SU	2d Sun. after Easter.	5 26 6 37	7 40	11 51	ar	1 55
10	Mo	[Ld Bacon d. 1626.	5 25 6 38	8 3		Morn ar	2 34
11	Tu	Canning born, 1770.	5 23 6 39	8 25	0 50	br	3 16
12	We	<i>Changeable.</i>	5 20 6 41	8 47	1 41	br	4 11
13	Th	Catholic Eman. 1829.	5 18 6 42	9 9	2 21	ha	5 25
14	Fri	Moon in apogee.	5 16 6 43	9 30	2 54	ha	6 47
15	Sat	<i>Dry and pleasant.</i>	5 15 6 45	9 52	3 26	ha	7 57
16	SU	3d S. aft East. Shaks.	5 14 6 46	10 18	3 44	be	8 55
17	Mo	[peare born, 1564.	5 12 6 47	10 34	4 5	be	9 41
18	Tu	<i>Warm rains.</i>	5 10 6 48	10 55	4 25	re	10 17
19	We	Byron died, 1824. Al-	5 8 6 49	11 16	4 44	re	10 55
20	Th	[phege.	5 7 6 50	11 37		Rises. se	11 24
21	Fri	Alex. the Great died,	5 6 6 51	11 57	8 9	se	Morn
22	Sat	[323 B. C.	5 4 6 52	12 19	9 25	se	0 20
23	SU	4th S. aft. Easter. St.	5 2 6 54	12 37	10 37	th	0 56
24	Mo	[George.	5 0 6 56	12 57	11 55	th	1 44
25	Tu	<i>Chilling winds.</i>	4 58 6 57	13 17		Morn kn	2 33
26	We	Moon in perigee.	4 57 6 58	13 36	0 51	kn	3 32
27	Th		4 56 6 59	13 55	1 44	le	4 39
28	Fri	Sir W. Jones d. 1794.	4 55 7 0	14 14	2 21	le	5 38
29	Sat	Low tides. <i>Finc.</i>	4 54 7 1	14 33	2 50	fe	7 19
30	SU	Rogation Sunday.	4 53 7 2	14 42	3 15	fe	8 28

Now enters in the charming month of *May*.
 The Fields and Groves are pleasant, fine and gay;
 Birds in the bushes warble forth and sing,
 Rejoicing greatly in the glorious Spring.

MOON'S PHASES.

D. H. M.

D. H. M.

● New Moon, 4 2 17a. | ○ Full Moon, 20 2 44m.
 ☽ First quarter, 12 0 54a. | ☾ Last quarter, 26 7 17a.

O. P.	High water h. m.	D. M.	D. W.	CALENDAR, &c.	☉		Sun's dec. N d. m.	○ R. & sets h. m.	○ P.	High water h. m.	
					Ris.	Sets					
		1	Mo	St. Phil. & St. James	4	51	7 3	15 6	3 37	he	9 29
	8 48	2	Tu	<i>Very pleasant.</i>	4	49	7 4	15 24	3 56	he	10 8
	9 45	3	We		4	48	7 6	15 42	4 16	ne	10 48
	10 31	4	Th	Asc. day or Holy Thu.	4	46	7 7	15 59	Sets.	ne	11 23
	11 10	5	Fri	Bonaparte died, 1821.	4	44	7 9	16 16	8 39	ne	11 57
	11 47	6	Sat	<i>Warm</i>	4	42	7 10	16 33	9 41	ar	0 17
	0 5	7	SU	Sunday af. Ascension.	4	41	7 11	16 50	10 44	ar	0 56
	0 40	8	Mo	[Cumberland d. 1811.	4	40	7 12	17 7	11 40	br	1 38
	1 16	9	Tu	<i>showers.</i>	4	39	7 13	17 23	Morn	br	2 20
	1 55	10	We		4	38	7 14	17 39	0 23	ha	3 6
	2 34	11	Th	Pitt died, 1778.	4	37	7 15	17 54	0 59	ha	3 56
	3 16	12	Fri	Moon in apogee.	4	36	7 16	18 9	1 23	ha	4 48
	4 11	13	Sat	<i>Fine weather</i>	4	35	7 17	18 24	1 51	be	5 53
	5 25	14	SU	Whit Sunday or Pen.	4	34	7 18	18 39	2 12	be	6 59
	6 47	15	Mo	Whit Mond. [tecost.	4	33	7 19	18 53	2 30	re	7 57
	7 57	16	Tu	Batt. of Albuara, 1810	4	32	7 21	19 7	2 48	re	8 50
	8 55	17	We	Dr. S. Clark d. 1729.	4	30	7 22	19 21	3 6	re	9 37
	9 41	18	Th	<i>for planting.</i>	4	29	7 23	19 34	3 26	se	10 18
	10 17	19	Fri	Dunstan.	4	28	7 24	19 47	3 50	se	10 6
	10 55	20	Sat	[bus died, 1506.	4	27	7 25	20 0	Rises.	th	11 53
	11 24	21	SU	Trinity Sun. Colum.	4	26	7 26	20 12	9 42	th	0 4
	Morn	22	Mo	Prs. Hamberg b.	4	25	7 27	20 24	10 50	kn	0 47
	0 20	23	Tu	<i>Changeable,</i>	4	24	7 28	20 36	11 43	kn	1 30
	0 56	24	We	High tides.	4	24	7 29	20 47	Morn	le	2 17
	1 44	25	Th	<i>with rain.</i>	4	23	7 30	20 58	0 23	le	3 10
	2 33	26	Fri	Batt. Ostrolenka, '31.	4	22	7 31	21 9	0 58	fe	4 10
	3 32	27	Sat	[birth-day kept.	4	21	7 32	21 19	1 20	fe	5 24
	4 39	28	SU	1st S. of Trin. King's	4	20	7 33	21 29	1 44	he	6 46
	5 58	29	Mo	K. Chas. II. rest.	4	19	7 34	21 38	2 1	he	7 55
	7 19	30	Tu	Peace in Europe, 1814	4	18	7 35	21 47	2 21	he	8 53
	8 28	31	We	<i>Very fine.</i>	4	17	7 36	21 56	2 42	ne	9

Quæ homines tot sententiæ, 'tis true,
 Our Minds do differ as our Faces do;
 Was it not so, one-half the Female kind
 In Hymen's bands they never would be joined:
 If all exact did one opinion hold,
 One-half the Almanacks would not be sold.

MOON'S PHASES.

D. H. M.

D. H. M.

● New Moon, 3 3 0m. | ○ Full Moon, 18 11 7m.
 ☽ First quarter, 11 5 45m. | ☾ Last quarter, 25 1 15m.

D. M.	D. W.	CALENDAR, &c.	☉		SUN'S		○ R.		High water
			Ris.	Sets	dec.	& S.	Pl	h. m.	
			h. m.	h. m.	d. m.	h. m.	h. m.		h. m.
1	Th	Nicomede.	4 18 7	97 22	4 3	6 ne	10 21		
2	Fri	<i>Frequent</i>	4 17 7	38 22	12 3	39 ne	11 1		
3	Sat	<i>refreshing showers.</i>	4 17 7	38 22	20 Sets.	ar	11 40		
4	SU	2d Sun. after Trinity.	4 16 7	39 22	27 9	32 ar	Morn		
5	Mo	Low tides.	4 16 7	40 22	34 10	18 br	0 39		
6	Th	[Royal assent.	4 16 7	40 22	40 10	58 br	1 13		
7	We	Reform Bill received	4 16 7	41 22	46 11	29 ha	1 59		
8	Th	Moon in apogee.	4 16 7	42 22	52 11	54 ha	2 39		
9	Fri	<i>Very warm.</i>	4 15 7	42 22	57 Morn	be	3 19		
10	Sat	War with Tripoli 1801	4 15 7	43 23	2 0	15 be	4 1		
11	SU	3d Sun. after Trinity.	4 15 7	43 23	6 0	34 be	4 47		
12	Mo	Hersch. stat. <i>Rain.</i>	4 15 7	44 23	10 0	53 re	5 44		
11	Th	Virg. Mary d. A. D. 40.	4 15 7	44 23	14 1	18 re	6 47		
34	We	Bat. Marengo, 1800.	4 15 7	45 23	17 1	32 se	7 54		
15	Th	<i>Fine growing</i>	4 15 7	46 23	20 1	51 se	9 2		
16	Fri	<i>weather.</i>	4 15 7	46 23	22 2	15 th	10 6		
17	Sat	Mahomet died, 632.	4 15 7	46 23	24 2	52 th	10 48		
18	SU	4th S. after Trin. Bat.	4 15 7	46 23	26 Rises.	kn	11 36		
19	Mo	[Waterloo, 1815.	4 15 7	47 23	27 9	33 kn	Morn		
20	Tu	Moon in perigee.	4 15 7	47 23	27 10	21 le	0 58		
21	We	Bat. of Vittoria, 1815	4 15 7	47 23	29 10	55 le	1 36		
22	Th	<i>Warm</i>	4 16 7	48 23	29 11	24 fe	2 11		
23	Fri	<i>and pleasant.</i>	4 16 7	48 23	27 11	47 fe	2 50		
24	Sat	Nat. of St. John Bap.	4 16 7	48 23	26 Morn	fe	3 43		
25	SU	5th Sun after Trinity.	4 16 7	48 23	25 0	7 he	4 41		
26	Mo	Geo. IV. died, 1830.	4 17 7	48 23	23 0	27 he	5 52		
27	Tu	Rev. Dr. Dodd hung.	4 17 7	48 23	21 0	47 ne	7 6		
28	We	<i>Thunder Showers.</i>	4 17 7	48 23	18 1	9 ne	8 15		
29	Th	St. Peter.	4 18 7	48 23	15 1	39 ar	9 11		
30	Fri	Merc. greatest elong.	4 18 7	48 23	12 2	2 ar	9 52		

" Now genial suns and gentle breezes reign,
And Summer's fairest splendors deck the plain;
Exulting Flora views her new-born rose,
And all the ground with short-lived beauty glows."

MOON'S PHASES.

● New Moon, 2 4 46a. | ○ Full Moon, 17 6 6a.
☽ First quarter, 10 8 26a. | ☾ Last quarter, 24 9 22m.

M. 7m.
15m.
High water
h. m.
10 21
11 1
11 40
Morn
0 39
1 13
1 59
2 39
3 19
4 1
4 47
5 44
6 47
7 54
9 2
10 6
10 48
11 36
Morn
0 53
1 36
2 11
2 50
3 43
4 41
5 52
7 6
9 15
9 11
9 52

D. M.	D. W.	CALENDAR, &c.	☾ Ris. & Sets h. m. h. m.	SUN'S Dec. & d. m. h. m.	○ R. & S. h. m.	○ High water h. m.
1	Sat	<i>Very fine.</i>	4 19 7 47	23 8	2 44	or 10 46
2	SU	6th Sun after Trin.	4 20 7 47	23 4	Sets. br	11 33
3	Mo	<i>Cloudy.</i>	4 21 7 47	22 59	8 56	br Morn
4	Tu	U.S. Indepen. dec. '76	4 22 7 47	22 54	9 30	ha 0 25
5	We	Fren. took Alg. 1830.	4 22 7 46	22 40	9 57	ha 0 57
6	Th	Old Midsummer day.	4 23 7 46	22 43	10 20	ha 1 26
7	Fri	Sheridan died, 1816.	4 24 7 46	22 37	10 38	be 1 59
8	Sat	E. Burke died, 1797.	4 24 7 46	22 30	10 56	be 2 30
9	SU	7th Sun after Trin.	4 25 7 46	22 23	11 12	re 3 0
10	Mo	Columbus b. 1447.	4 26 7 45	22 16	11 31	re 3 35
11	Tu	<i>Changeable.</i>	4 26 7 45	22 8	11 51	se 4 46
12	We	Batt of Aghrim, 1691.	4 27 7 45	22 0	Morn se	5 45
13	Th	Marat assass. [began.	4 28 7 44	21 51	0 14	se 6 57
14	Fri	French revol. of 1789	4 29 7 44	21 42	0 43	th 8 25
15	Sat	St Swithin. <i>Warm</i>	4 30 7 43	21 33	1 25	th 9 32
16	SU	8th Sun. af Trin. <i>and</i>	4 30 7 42	21 23	2 18	kn 10 31
17	Mo	<i>pleasant weather.</i>	4 31 7 42	21 13	Rises. kn	11 22
18	Tu	Moon in perigee.	4 32 7 39	21 3	8 52	le 0 12
19	We	New comet disc. 1832	4 33 7 38	20 52	9 23	le 0 36
20	Th	Margaret.	4 34 7 38	20 41	9 49	fe 1 20
21	Fri	Burns died, 1796.	4 35 7 37	20 30	10 12	fe 2 0
22	Sat	Magdalene. <i>Reviving</i>	4 36 7 36	20 18	10 35	he 2 39
23	SU	9th S. aft Trin. Union	4 37 7 35	20 6	10 52	he 3 23
24	Mo	of Eng. & Scot. 1706	4 38 7 34	19 53	11 13	ne 4 6
25	Tu	Dog days begin.	4 39 7 33	19 41	11 38	ne 5 3
26	We	St. Anne. <i>showers.</i>	4 40 7 32	19 28	Morn ar	6 20
27	Th	M. Q. Scots mar. 1565	4 41 7 31	19 14	0 8	ar 7 42
28	Fri	Bat. Talavera, 1809.	4 42 7 30	19 0	0 45	ar 8 55
29	Sat	Low tides. <i>Sultry.</i>	4 43 7 29	18 46	1 30	br 9 51
30	SU	10th Sun af Trinity.	4 44 7 29	18 32	2 23	br 10 40
31	Mo	<i>Pleasant.</i>	4 45 7 26	18 17	3 25	be 11 24

"New comes August, and with his fervid noon
 Unsnews labour. The swinkt mower sleeps;
 The weary maid walks feebly; the warm swale
 Pitches his lead reluctant."

MOON'S PHASES.

D. H. M.

D. H. M.

- New Moon, 1 7 12m. ☾ Last quarter, 22 8 32 a.
- ☽ First quarter, 9 9 33m. ● New Moon, 30 11 16 a.
- Full Moon, 16 0 54m.

D. M.	D. W.	CALENDAR, &c.	☾		Sun's		R. Pl.	High water
			Ris.	Sets	Dec. N	& S.		
			h. m.	h. m.	d. m.	h. m.		h. m.
1	Tu	Lammes. Batt. Nile.	4 47 7	25 18	2 8	1 ha	11 56	
2	We	Thunder showers.	4 48 7	24 17	4 8	24 ha	0 9	
3	Th	Abd. Chas. X. 1830.	4 49 7	23 17	32 8	44 be	0 36	
4	Fri	High tides.	4 50 7	22 17	16 9	1 be	1 3	
5	Sat	Very warm.	4 51 7	21 17	0 9	19 re	1 32	
6	SU	11th Sun. after Trin.	4 52 7	20 16	43 9	37 re	2 0	
7	Mo	[Transfiguration.	4 53 7	19 16	26 9	55 re	2 32	
8	Tu	Geo. Canning d. 1827	4 54 7	17 16	10 10	16 se	3 14	
9	We	Dry and	4 55 7	15 15	52 10	42 se	4 3	
10	Th	St. Lawrence.	4 56 7	14 15	35 11	16 th	5 0	
11	Fri	pleasant.	4 58 7	12 15	17 15	Morn th	6 21	
12	Sat	[Adelaide b. 1792.	4 59 7	11 14	59 0	2 kn	8 6	
13	SU	12th S. af Trin. Queen	5 0 7	9 14	41 1	1 kn	9 16	
14	Mo	First bk. printed 1547	5 1 7	8 14	23 2	17 le	10 19	
15	Tu	Assumption.	5 3 7	6 14	4 Rises.	le	11 10	
16	We	High winds.	5 4 7	4 13	45 7	49 fe	11 55	
17	Th	Ds. of Kent born.	5 5 7	3 13	26 8	12 fe	0 17	
18	Fri	[Spithead, 1782.	5 6 7	2 13	7 8	34 he	0 55	
19	Sat	Royal Geo. sunk off	5 7 7	0 12	47 8	55 he	1 35	
20	SU	13th S. af Trin. Ber-	5 8 6	58 12	28 9	17 ne	2 12	
21	Mo	Wm IV. b. '65. [nard.	5 10 6	56 12	8 9	40 ne	2 50	
22	Tu	Rain.	5 11 6	54 11	48 10	9 ne	3 34	
23	We	Herschell died, 1822.	5 12 6	53 11	27 10	44 ar	4 28	
24	Th	St. Bartholemew.	5 13 6	51 11	7 11	26 ar	5 42	
25	Fri	Warm	5 14 6	50 10	46 Morn	br	7 11	
26	Sat	[A. Clarke d. 1832.	5 15 6	48 10	25 0	16 br	8 33	
27	SU	14th S. af Trin. Dr.	5 16 6	46 10	4 1	15 br	9 34	
28	Mo	St. Augustine.	5 17 6	45 9	43 2	23 ha	10 19	
29	Tu	St. John Baptist beb.	5 18 6	43 9	22 3	24 ha	10 55	
30	We	Jerusalem dest. by Ti-	5 19 6	41 9	0 4	29 be	11 25	
31	h	and clear. [tus, 70.	5 20 6	39 8	39 5	34 be	11 54	

" The ears are filled, the fields are white,
 'The constant harvest moon is bright;
 To grasp the bounty of the year
 The respers to the scene repair,
 With hook in hand, and bottles slung,
 And dowlas scoops beside them hung."

MOON'S PHASES.

D. H. M. D. H. M.
 ☽ First quarter, 7 6 27 a. ☾ Last quarter, 21 11 10m.
 ○ Full Moon, 14 8 44m. ● New Moon, 29 3 17m.

H. M.	High water
8 32 a.	
11 16 a.	
○ Pl	h. m.
ha	11 56
ha	0 9
be	0 36
be	1 3
re	1 32
re	2 0
re	2 32
se	3 14
se	4 3
th	5 0
th	6 21
kn	8 6
kn	9 16
le	10 19
le	11 10
fe	11 55
fe	0 17
he	0 55
he	1 35
ne	2 12
ne	2 50
ne	3 34
ar	4 28
ar	5 42
br	7 11
br	8 33
br	9 34
ha	10 19
ha	10 55
be	11 25
be	11 54

D. M.	D. W.	CALENDAR, &c.	Ris. & Set. h. m h. m	SUN's dec. N d. m. h.	○ R & S. h. m.	○ Pl	High water h. m.
1	Fri	Giles.	5 23 6 37	8 17	7 25	be	Morn
2	Sat	<i>Changeable,</i>	5 24 6 35	7 55	7 43	re	0 34
3	SU	15th Sun. after Trin.	5 25 6 33	7 33	8 0	re	1 2
4	Mo	<i>with showers.</i>	5 26 6 32	7 11	8 20	se	1 33
5	Tu	Malta taken, 1900.	5 27 6 30	6 49	9 44	se	2 15
6	We	<i>Fair</i>	5 29 6 26	6 26	9 14	th	2 57
7	Th	Wm. IV. & Q. Ade.	5 29 6 26	6 4	9 54	th	3 42
8	Fri	[laide crowned, 1831.	5 30 6 25	5 41	10 40	th	4 47
9	Sat	Flodden Field, 1613.	5 32 6 23	5 19	11 54	kn	6 23
10	SU	16th Sun. after Trin.	5 33 6 21	4 56	Morn	kn	7 52
11	Mo	Low tides. <i>and fine.</i>	5 34 6 19	4 33	1 12	le	9 7
12	Tu	<i>Sudden changes</i>	5 35 6 17	4 10	Rises	le	10 2
13	We	Death of Wolfe, 1759	5 36 6 15	3 47	6 12	fe	10 47
14	Th	Holy Cross. Moscow	5 37 6 13	3 24	6 36	fe	11 30
15	Fri	[burnt, 1812.	5 39 6 11	3 1	6 56	he	Morn
16	Sat	<i>about this time.</i>	5 40 6 9	2 38	7 17	he	0 39
17	SU	17th S. of Trin. Lam.	5 41 6 8	2 15	7 41	ne	1 5
18	Mo	[bert.	5 42 6 6	1 51	8 8	ae	1 44
19	Tu	<i>More settled</i>	5 44 6 4	1 23	8 41	ar	2 24
20	We	<i>and fine.</i>	5 45 6 2	1 5	0 21	ar	3 7
21	Th	St. Matt. Sir W. Scott	5 46 6 0	0 41	10 8	br	4 2
22	Fri	[died, 1832.	5 47 5 58	0 13	11 6	br	5 12
23	Sat	[tumn commences.	5 48 5 56	S. 3	Morn	br	6 42
24	SU	18th S. aft Trin. Au.	5 49 5 55	0 29	0 11	hu	8 3
25	Mo	Moon in apogee.	5 50 5 53	0 52	1 14	ha	9 5
26	Tu	St. Cyprian.	5 52 5 51	1 16	2 19	be	9 49
27	We	<i>A few</i>	5 53 5 49	1 89	3 24	be	10 20
28	Th	<i>chilly days,</i>	5 54 5 47	2 2	Sets.	be	10 53
29	Fri	St. Michael. <i>may be</i>	5 56 5 45	2 26	5 48	re	11 21
30	Sat	St. Jerome. <i>expected.</i>	5 57 5 43	2 49	6 7	re	11 49

"The harvest men sing Summer out,
With thankful song and joyous shout;
And when October comes, they hail
The Autumn with the flapping fail."

MOON'S PHASES.

D. H. M. D. H. M.
 ☽ First quarter, 4 2 29m. | ☾ Last quarter, 21 5 11m.
 ○ Full Moon, 13 6 31 a. | ● New Moon, 29 6 49m.

D. M.	D. W.	CALENDAR, &c.	☉ Ris. & Sets		Sun's	○ R	○ Pl	High water
			h. m.	h. m.	d. m	h. m.		h. m.
1	SU	19th S. af Trin. Remi.	5 53	5 41	3 13	6 26	se	0 2
2	Mo	[gius.	5 59	5 39	3 36	6 48	se	0 32
3	Tu	<i>Pleasant.</i>	6 0	5 38	3 59	7 15	se	1 15
4	We	Hersch. sou. 9h 35m	6 1	5 36	4 22	7 53	th	2 1
5	Th	[merica, 1793.	6 2	5 35	4 46	8 39	th	2 43
6	Fri	Faith. Peace with A-	6 3	5 33	5 9	9 40	kn	3 36
7	Sat	Mark. <i>Warm.</i>	6 4	5 31	5 32	10 53	kn	4 46
8	SU	20th Sun. after Trin.	6 5	5 29	5 55	morn.	le	6 43
9	Mo	St. Denys. <i>and fair.</i>	6 6	5 27	6 19	0 13	le	7 42
10	Tu	Low tides.	6 8	5 25	6 41	1 34	fe	8 47
11	We	Duncan's vict. 1797.	6 9	5 23	7 3	2 56	fe	9 39
12	Th	Col. disc. St Salvador	6 10	5 21	7 26	rises.	he	10 22
13	Fri	<i>Rainy.</i>	6 11	5 20	7 43	5 13	he	11 3
14	Sat	<i>with high winds.</i>	6 13	5 18	8 11	5 40	ne	11 42
15	SU	21st Sun. after Trin.	6 14	5 17	8 33	6 7	ne	Morn
16	Mo	Merc. in perihelion.	6 16	5 15	9 55	6 36	ar	0 57
17	Tu	Ethel. <i>Frosty nights,</i>	6 17	5 13	9 17	7 14	ar	1 18
18	We	St. Luke. <i>and chilly</i>	6 18	5 11	9 39	7 59	ar	1 59
19	Th	[quake, 1687.	6 19	5 9	10 1	8 54	br	2 44
20	Fri	Lima des. by an earth.	6 20	5 8	10 23	9 56	br	3 34
21	Sat	Bat of Trafalgar, 1805	6 22	5 6	10 44	11 0	ha	4 33
22	SU	22d Sun. after Trin.	6 23	5 4	11 5	morn.	ha	5 57
23	Mo	<i>mornings.</i>	6 25	5 2	11 27	0 6	ha	7 16
24	Tu	Low tides.	6 26	5 1	11 48	1 11	be	8 20
25	We	Crispin. <i>Falling</i>	6 27	5 0	12 8	2 16	be	9 6
26	Th	Cholera appeared in	8 28	4 59	12 29	3 20	re	9 44
27	Fri	[Britain, 1831.	6 30	4 53	12 50	4 26	re	10 16
28	Sat	St. Simon & St. Jude	6 31	4 57	13 10	Sets.	re	10 48
29	SU	23d Sun. after Trin.	6 33	4 55	13 30	4 58	se	11 22
30	Mo	<i>weather.</i>	6 34	4 54	13 50	5 14	se	11 56
31	Tu	Reformation be. 1517	6 36	4 52	14 9	5 52	th	0 15

“ Sometimes when Autumn grows yellow and sere,
 And the sad clouds weep for the dying year,
 The wind beckons the leaves with its viewless hand,
 And they leap from the branches at its command,
 And follow its footsteps with wheeling feet,
 Like fairies that dance in the moonlight sweet.”

MOON'S PHASES.

D. H. M. D. H. M.
 ☽ First quarter, 5 9 39m. ☾ Last quarter, 20 1 50m.
 ○ Full Moon, 12 6 46m. ● New Moon, 27 9 6a.

R	ets	Pl	High water
m.			h. m.
26	se		0 2
48	se		0 32
15	se		1 15
53	th		2 1
39	th		2 43
40	kn		3 36
53	kn		4 46
rn.	le		6 43
13	le		7 43
34	fe		8 47
56	fe		9 39
s.	he		10 22
13	he		11 3
40	ne		11 42
7	ne		Morn
36	ar		0 37
14	ar		1 18
59	ar		1 59
54	br		2 44
56	br		3 34
0	ha		4 39
n.	ha		5 57
6	ha		7 16
1	be		8 20
6	be		9 6
0	re		9 44
6	re		10 16
	re		10 48
8	se		11 22
4	se		11 58
2	th		0 15

D.	D.	CALENDAR, &c.	☼	SUN'S	☾	R.	High water
M.	W.		Ris.	dec.	S.	Pl	h. m.
			h. m.	h. m.	h. m.		
1	We	All Saints. <i>Variable.</i>	6 38 4 50	14 29	6 37	th	1 1
2	Th	All Souls.	6 39 4 49	14 48	7 33	kn	1 40
3	Fri	Prs. Sophia born.	6 40 4 48	15 7	8 42	kn	2 31
4	Sat	<i>Heavy rains.</i>	6 41 4 47	15 25	10 31	le	3 31
5	SU	24th S. after Trinity.	6 42 4 46	15 44	11 21	le	4 39
6	Mo	Prs. Charlotte d. 1821	6 43 4 45	16 2	morn.	fe	5 56
7	Tu	Moon perigee.	6 45 4 43	16 20	0 40	fe	7 13
8	We	Milton died, 1674.	6 46 4 42	16 37	1 57	he	8 21
9	Th	<i>followed by</i>	6 47 4 41	16 54	3 14	he	9 6
10	Fri	Luther born, 1483.	6 48 4 40	17 11	4 30	he	9 59
11	Sat	St. Martin.	6 50 4 39	17 28	rises.	ne	10 10
12	SU	25th Sun. after Trin	6 51 4 38	17 45	4 34	ne	11 20
13	Mo	<i>keen frosts.</i>	6 53 4 37	18 1	5 8	ar	11 59
14	Tu	Warsaw taken, 1794.	6 54 4 36	18 16	5 50	ar	0 19
15	We	High tides. <i>Rain or</i>	6 56 4 35	18 32	6 41	br	0 53
16	Th	<i>snow—perhaps both.</i>	6 57 4 34	18 47	7 41	br	1 38
17	Fri	Q. Charl. died, 1318.	6 58 4 32	19 2	8 46	ha	2 18
18	Sat	<i>Clear and pleasant.</i>	6 59 4 31	19 16	9 52	ha	3 18
19	SU	26th Sun. after Trin.	7 0 4 30	19 30	10 57	ha	3 55
20	Mo	Moon in apogee.	7 1 4 29	19 44	morn	be	4 50
21	Tu	<i>Changeable.</i>	7 3 4 28	19 58	0 1	be	6 1
22	We	High tides.	7 4 4 27	20 11	1 5	re	7 13
23	Th	St. Clement.	7 6 4 27	20 23	2 9	re	8 12
24	Fri	<i>Windy.</i>	7 7 4 26	20 36	3 15	re	9 0
25	Sat	St. Catherine.	7 8 4 25	20 48	4 23	se	9 39
26	SU	27th Sun. after Trin.	7 10 4 25	20 59	5 35	se	10 19
27	Mo	<i>Fine and</i>	7 11 4 24	21 10	Sets.	th	11 1
28	Tu	<i>fair.</i>	7 12 4 24	21 21	4 31	th	11 52
29	We	Polish rev. com. 1831	7 14 4 23	21 31	5 24	kn	0 9
30	Th	St Andrew. Lew tides	7 15 4 23	21 41	6 32	kn	0 50

C

25

“ CHRISTMAS! day of happy sound and mirth,
That long with childish memory stays,
How blest around the cottage hearth,
I met thee in my younger days.”

MOON'S PHASES.

D. H. M. D. H. M.
First quarter, 4 5 8a. Last quarter, 19 11 28 a.
○ Full Moon, 11 9 34a. ● New Moon, 27 9 49m.

D. M.	D. W.	CALENDAR, &c.	☉		SUN'S		R. & S.	☾	High water
			Ris. h. m.	Sets h. m.	dec. d. m.	h. m.			
1	Fri	Mira south 9h 28m	7 16 4	23 21 51	7 49	le	1 36		
2	Sat	Bona. crowned, 1804.	7 17 4	23 22 0	9 12	le	2 31		
3	SU	Advent Sunday.	7 18 4	23 22 8	10 30	le	3 22		
4	Mo	<i>A snow storm</i>	7 19 4	23 22 17	11 46	fe	4 19		
5	Tu	Algol. south 9h 58m	7 20 4	23 22 29	morn	fe	5 23		
6	We	Nicholas. <i>about</i>	7 21 4	23 22 32	1 2	he	6 33		
7	Th	Pleiades so. 10h 32m	7 22 4	21 22 39	2 16	he	7 43		
8	Fri	Concep. B. V. Mary.	7 23 4	21 22 45	3 31	ne	8 44		
9	Sat	Low tides. <i>this time.</i>	7 24 4	21 22 51	4 46	ne	9 36		
10	SU	2d Sunday in Advent.	7 25 4	21 22 57	6 0	ar	10 22		
11	Mo	Winn taken, 1812.	7 26 4	22 23 2	Rises	ar	11 3		
12	Tu	Yd L rises 5h 59m	7 27 4	22 23 7	4 30	br	11 45		
13	We	Lucy. <i>Wet and</i>	7 28 4	22 23 11	5 26	br	0 7		
14	Th	Washington d. 1799.	7 29 4	22 23 14	6 31	br	0 45		
15	Fri	<i>chilly.</i>	7 30 4	23 23 18	7 42	ha	1 22		
16	Sat	Mira south 8h 29m	7 30 4	23 23 21	8 43	ha	1 55		
17	SU	3d Sunday in Advent.	7 31 4	23 23 23	9 48	be	2 22		
18	Mo	[Bolivar died, 1830.	7 32 4	23 23 25	10 51	be	3 11		
19	Tu	Moon in apogee.	7 33 4	24 23 26	11 55	be	3 50		
20	We	<i>Cold, with snow.</i>	7 33 4	24 23 27	Morn	re	4 43		
21	Th	St. Thomas.	7 34 4	25 23 28	0 56	re	5 45		
22	Fri	Settlem. of New Eng.	7 34 4	25 23 28	2 2	se	6 54		
23	Sat	[com. 1620.	7 35 4	26 23 27	3 13	se	8 2		
24	SU	4th Sunday in Advent	7 35 4	27 23 26	4 27	se	9 3		
25	Mo	Christmas Day.	7 35 4	28 23 25	5 43	th	9 56		
26	Tu	St. Stephen. <i>Mild.</i>	7 36 4	28 23 23	Sets	kn	10 45		
27	We	St. John.	7 36 4	29 23 21	4 12	kn	11 34		
28	Th	Innocents. <i>Change.</i>	7 36 4	29 23 18	5 28	kn	morn.		
29	Fri	Ld. Stafford ex. 1690.	7 36 4	29 23 15	6 51	le	0 46		
30	Sat	Moon perigee. <i>able.</i>	7 36 4	29 23 11	8 14	le	1 32		
31	SU	1st S. aft Christ. Sil.	7 36 4	30 23 6	9 34	fe	2 17		

id mirth,

D. H. M.
r, 19 11 28 a.
, 27 9 49m.

R. High
& S. water
h. m. Pl h. m.

7	49	le	1	36
9	12	le	2	31
0	30	le	3	22
1	46	fe	4	19
norn		fe	5	23
1	2	he	6	33
2	16	he	7	43
3	31	ne	8	44
4	46	ne	9	36
6	0	ar	10	22
rises		ar	11	3
4	30	br	11	45
5	26	br	0	7
6	31	br	0	45
7	42	he	1	22
8	43	ha	1	55
9	48	be	2	22
0	51	be	3	11
55		be	3	50
orn		re	4	43
56		re	5	45
2		sa	6	54
13		se	8	2
27		se	9	3
43		th	9	56
ts		th	10	45
12		kn	11	34
28		kn	morn.	
51		le	0	46
14		le	1	32
34		fe	2	17

PROVINCE of NEW-BRUNSWICK.

HIS EXCELLENCY

Major-General Sir ARCHIBALD CAMPBELL, Bart. G. O. B.
LIEUTENANT-GOVERNOR and COMMANDER-IN-CHIEF of the Pro-
vince of NEW-BRUNSWICK, &c. &c. &c.

EXECUTIVE COUNCIL.

Honorable Thomas Baillie,	Honorable George F. Street,
" Frederick P. Robinson,	" John S. Saunders.
" William F. Odell,	

LEGISLATIVE COUNCIL.

The Honorable the CHIEF JUSTICE, *President.*

Lord Bishop of Nova-Scotia,	Honorable John S. Saunders,
Honorable William Black.	" James Allanshaw,
" George Shore,	" Amos E. Botsford,
" Thomas Baillie,	" The Attorney General,
" Harry Peters,	" George H. Hazen,
" Frederick P. Robinson,	" Thomas C. Lee,
" Joseph Cunard,	" Edward B. Chandler.
" William H. Robinson,	

OFFICERS OF THE LEGISLATIVE COUNCIL.

William Tyng Peters, Esquire, Clerk.
Mr. John Gregory, Clerk Assistant.
Isaac W. Jouett, Esq. Sergeant at Arms, and Usher of the Black Rod.
Reverend George Coster, A. M., Chaplain.

PRINCIPAL OFFICERS OF GOVERNMENT.

Honorable Charles Jeffrey Peters, Attorney General.
Honorable George Frederick Street, Solicitor General.
Honorable John Simcoe Saunders, Advocate General.
Honorable William Franklin Odell, Secretary, Register, and Clerk of
the Executive Council.
Honorable Thomas Baillie, Commissioner of Crown Lands and Sur-
veyor General.
Honorable Thomas C. Lee, Receiver General.
Honorable Frederick P. Robinson, Surveyor and Auditor of the King's
Casual Revenue.
Timothy R. Wetmore, Esq. Collector of Rents on Coal Mines, &c.
Honorable George Shore, }
Honorable Frederick P. Robinson, } Commissioners of Accounts of the
Honorable John S. Saunders, } King's Casual Revenue.
Hon. William F. Odell, }
Hon. George F. Street, } Commissioners for the Management of the
Hon. John S. Saunders, } Surplus of the Casual and Territorial
Revenues.

HOUSE OF ASSEMBLY.

CHARLES SIMONDS, Esquire, *Speaker.*

County of York.

Lemuel A. Wilmot, }
John Allen, } Esquires.
James Taylor, }
Jedediah Slason, }

County of Saint John.

John R. Partelow, }
Charles Simonds, } Esquires.
John M. Wilmot, }
Geo. D. Robinson, }

County of Charlotte.

Thomas Wyer, }
George S. Hill, } Esquires.
James Brown, jun. }
Patrick Clinch, }

County of Westmorland.

Philip Palmer, }
William Crane, } Esquires.
Daniel Hannington, }

County of Northumberland.

Alexander Rankin, }
John A. S. Street, } Esquires.

County of Sunbury.

George Hayward, }
Thomas O. Miles, } Esquires.

King's County.

William M'Leod, }
Samuel Freeze, } Esquires.

Queen's County.

Hugh Johnston, }
Thomas Gilbert, } Esquires.

County of Kent.

John W. Weldon, }
John P. Ford, } Esquires.

County of Gloucester.

William End, }
Peter Stewart, } Esquires.

County of Carleton.

Jeremiah M. Connell, }
George Morehouse, } Esquires.

City of Saint John.

Lewis Burns, }
Isaac Woodward, } Esquires.

OFFICERS OF THE HOUSE OF ASSEMBLY.

Charles P. Wetmore, Esquire, Clerk.
Mr. George Lee, junior, Clerk Assistant.
Henry G. Clopper, Esquire, Sergeant at Arms.
Reverend James Sommerville, L. L. D., Chaplain.

COURT OF CHANCERY.

His Excellency the Lieutenant-Governor, *Chancellor.*

The Chief Justice, and the Judges of the Supreme Court, Assessors of the Court.

Honorable William F. Odell, Clerk of the Crown in Chancery.

Neville Parker, Esquire, }
Honorable George F. Street, } Masters.
Henry Swymmer, Esquire, }

Daniel Ludlow Robinson, Esquire, Register.

William M'Beath, Esquire, Sergeant at Arms attending the Court of Chancery.

Terms—The 2d Monday after each Term day of the Supreme Court.

COURT OF GOVERNOR AND COUNCIL,
For hearing and determining Causes relating to Marriage and Divorce.

His Excellency the Lieutenant Governor, President.
 Honorable William Botsford, Vice-President.
 The Honorable His Majesty's Executive Council, Members.
 Henry G. Clopper, Esquire, Clerk.

Terms—The first *Tuesdays* in February and July.

SUPREME COURT OF JUDICATURE.

Chief Justice—Honorable Ward Chipman, L. L. D. 29th Sept. 1834.
 Justices,— { “ William Botsford, 2d April, 1823.
 “ James Carter, October, 1834.
 “ Robert Parker, October, 1834.

Charles S. Putnam, Esquire, Clerk of the Crown.
 Honorable George Shore, Clerk of the Pleas.
 William Tyng Peters, Esquire, Clerk of the Circuits, and Clerk of the Crown on the Circuits.

Terms—The first Tuesday in February, and the second Tuesdays in June and October.

Nisi Prtus Sittings in the County of York—Third Tuesday in February, fourth Tuesday in June, and fourth Tuesday in October.

CIRCUIT COURTS.

Saint John—Second Tuesday in January, and first Tuesday in August.
Charlotte.—Fourth Tuesday in April, and Tuesday after the fourth Tuesday in October.

King's.—Fourth Tuesday in January.
Kent.—Last Tuesday in August.
Westmorland.—First Tuesday in September.
Gloucester.—Wednesday before the first Tuesday in September.
Northumberland.—Second Tuesday in September.
Carleton.—Last Tuesday in September.
Sunbury.—Last Tuesday in February.
Queen's.—First Tuesday in March.

COURT OF VICE-ADMIRALTY.

Neville Parker, Esquire, Judge and Commissary.
 Honorable John Simcoe Saunders, Advocate General.
 Robert F. Hazen, Esquire, Registrar and Scribe.
 Mr. Anthony Richards Truro, Marshal.

Court for the Trial and Punishment of Piracy, and Offences committed on the High Seas.

Judges—The Chief Justice, and the Judges of the Supreme Court.
 Registrar and Scribe—William Tyng Peters, Esquire.
 Marshal—Edward W. Miller, Esquire.

This Court, which is held under a Commission issuing out of the High Court of Admiralty in England; sits at Fredericton whenever there is any business before it.

COURT FOR THE PROBATE OF WILLS, AND GRANTING ADMINISTRATIONS.

Honorable William F. Odell, Register of the Province.

Honorable George F. Street, Surrogate, York County.

SURROGATES AND REGISTERS.

Henry Swymmer, Esquire, Surrogate,	}	Saint John.
Charles Drury, Esquire, Deputy Register,	}	
Hon. Edward B. Chandler, Surrogate,	}	Westmorland.
James Stewart, Esquire, Deputy Register,	}	
Harris Hatch, Esquire, Surrogate,	}	Charlotte.
Colin Campbell, Esquire, Deputy Register,	}	
Edward B. Smith, Esquire, Surrogate,	}	King's County.
Gould Pickett, Esquire, Deputy Register,	}	
N. H. DeVeber, Esquire, Surrogate,	}	Queen's County.
Valentine H. Peters, Esquire, Deputy Register,	}	
John Hazen, Esquire, Surrogate,	}	Sunbury.
N. Hubbard, Esquire, Deputy Register,	}	
Thomas H. Peters, Esquire, Surrogate,	}	Northumberland.
John A. S. Street, Esquire, Deputy Register,	}	
William Chandler, Esquire, Surrogate,	}	Kent.
John W. Weldon, Esquire, Deputy Register,	}	
William End, Esquire, Surrogate and Deputy Register,		Gloucester.
B. Crannall Beardsley, Esquire, Surrogate,	}	Carleton.
_____ , Esquire, Deputy Register,	}	

⚡ The Surrogate Courts are held every third day, (Sunday excepted) in their respective Counties, but Letters of Administration may be had, and Wills proven, &c. at any time, by application to the Surrogate of the County.

COUNSELLORS AND ATTORNIES,

PRACTISING IN THE PROVINCE.

Fredericton—Hon. Charles J. Peters, (*Attorney General*), William Tyng Peters, Hon. John Simcoe Saunders, (*Advocate General*), Hon. G. F. Street, (*Solicitor General*), Daniel Ludlow Robinson, George J. Dibblee, Charles S. Putnam, Charles P. Wetmore, George F. S. Berton, L. A. Wilmot, Charles Fisher, George F. H. Minchin, William H. Odell, Stephen Miller, and David S. Kerr, Esquires.

Saint John—Henry Swymmer, William B. Kinnear, Neville Parker, James Peters, junior, Francis A. Kinnear, Robert F. Hazen, William Wright, H. N. H. Lugin, John M. Robinson, Moses H. Perley, Robert L. Hazen, Richard Saads, junior, Jehn Johnston, Jas. William Boyd, George Wheeler, Judah H. Harit, Duncan Robertson, Chas. Johnston, Newton W. Wallop, Jas. W. Peters, John H. Gray, Wm. J. Ritchie, Robertson Bayard, and Charles Gallagher, Esquires.

**OF WILLS,
IONS.**

Province.

County.

rs.

John.

morland.

rlotte.

County.

Queen's County.

orthumberland.

nt.

ister, Gloucester.

leton.

day, (Sunday ex-
administration may
cation to the Sur-

RNIES,

y General,) Wil-
ocate General),
udlow Robinson,
Wetmore, George
e F. H. Minchin,
err, Esquires.

par, Neville Par-
Robert F. Hazen,
ason, Moses H.
n Johnston, Jas.
uncan Robertson,
t, John H. Gray,
aghor, Esquires.

Saint Andrews—Harris Hatch, Alfred L. Street, Samuel H. Whitlock, James W. Chandler, Richard M. Andrews, William Jack, Geo. D. Street, and Wellington Hatch, Esquires.

Miramichi—Thomas H. Peters, John A. S. Street, William Carman, junior, George Kerr, Charles A. Harding, James H. Peters, and Edward Williston, Esquires.

Dorchester—Hon. Edward B. Chandler, Thomas S. Sayre, Samuel Gay Morse, and Christopher Milner, junior, Esquires.

Bend of Petitcodiac—Bliss Botsford, Esquire.

Saint Stephens—George Stilman Hill, Peter Stubs, jun. and Alexander Campbell, Esquires.

Saint George—Samuel G. Andrews, and William Jack, Esquires.

Richibucto—John W. Weldon, and William Chandler, Esquires.

Gage Town—Timothy R Wetmore, and Henry S. Peters, Esquires.

Kingston—William Simpson, and Edward B. Smith, Esquires.

Woodstock—B. Crannall Beardsley, A. K. Smedes Wetmore, G. W. Cleary, Abraham Nelson Garden, William H. Needham, and D. L. Dibblee, Esquires.

River de Chute—William Wiley, Esquire.

Gloucester—William End, Andrew Barbatie, Richard Carman, and Chipman Botsford, Esquires.

PUBLIC NOTARIES.

In the Province.

Honorable William F. Odell.
Harris Hatch, Esq.
Thomas H. Peters, Esq.
John A. S. Street, Esq.
Neville Parker, Esq.
Henry Swymmer, Esq.
William End, Esq.
Alfred L. Street, Esq.
William Tyng Peters, Esq.
George W. Cleary, Esq.
Charles S. Putnam, Esq.
A. K. Smedes Wetmore, Esq.
Daniel L. Robinson, Esq.
Francis A. Kinnear, Esq.
Robert F. Hazen, Esq.
John W. Weldon, Esq.
William Wright, Esq.
William Carman, junior, Esq.
Peter Stubs, junior, Esq.
Moses H. Perley, Esq.
Timothy R. Wetmore, Esq.
James Stewart, Esq.
John M. Robinson, Esq.
Andrew Barbatie, Esq.
George Kerr, Esq.
John Johnston, Esq.
James William Boyd, Esq.
Richard Sands, junior, Esq.
George Wheeler, Esq.

Richard Carman, Esq.
William Chandler, Esq.
Hugh Munro, Esq.
Charles A. Harding, Esq.
William Jack, Esq.
Alexander Campbell, Esq.
James H. Peters, Esq.
Samuel Hallett Whitlock, Esq.
Duncan Robertson, Esq.
George D. Street, Esq.
J. H. Hartt, Esq.
Chipman Botsford, Esq.
John H. Gray, Esq.
Edward Williston, Esq.
George S. Hill, Esq.
Henry S. Peters, Esq.
William J. Ritchie, Esq.

City of Saint John.

Hon. Charles Jeffrey Peters.
William Boyd Kinnear, Esq.
James Peters, junior, Esq.
Horatio Nelson H. Lugin, Esq.

Charlotte County.

William M'Lean, Esq.
John Wilson, Esq.
Colin Campbell, Esq.

Campo Bello.

Charles R. Hatheway, Esq.

West Isles.

Cavalier H. Jouett, Esq.

HIS MAJESTY'S CUSTOMS.

PORT OF SAINT JOHN.

Henry Bowyer Smith, Esquire, *Collector.*
J. Phipps Hood, Esquire, *Landing Surveyor.*
James Walker, Esquire, *Waiter and Searcher.*
George Hamilton Smith, Esquire, *Waiter and Searcher.*
Charles Drury, Esquire, *Admeasurer of Ships and Vessels.*
Mr. John Longmaid, *Tide Surveyor.*

SUB-COLLECTORS.

James Snyre, Esq. Dorchester; Perry Dumaresq, Esq. Dalhousie;
David Swayne, Esq. Richibucto; Henry E. Dibblee, Esquire, Wood-
stock; T. M. DeBlois, Esq. Bathurst,—under the Principal Officers
of His Majesty's Customs at Saint John.

WAREHOUSE DEPARTMENT.

William Stringer, Esquire, Warehouse Keeper at Saint John.
T. P. Marter, Esquire, Locker at ditto.

PORT OF MIRAMICHI.

John Wright, Esquire, Collector; Samuel Forsayeth, Esq. Com-
ptroller; James D. Lewin, Esq. Admeasurer of Vessels,—under the
Principal Officers of His Majesty's Customs at the Port of Saint John.

PORT OF SAINT ANDREWS.

Alexander Grant, Esquire, Collector.
C. V. Forster, Esquire, Comptroller and Landing Surveyor.
W. F. Acheson, Waiter and Searcher.
Wm. Ellman, Esq. 1st Clerk and Warehouse Keeper at St. Andrews.

SUB-COLLECTORS.

Thomas Hudson, Esquire, West Isles and Campo Bello.	William Frankland, Esq. Grand Manan.
T. Armstrong, Esq. St. Stephen.	A. J. Wetmore, Esq. St. George.

PROVINCIAL REVENUE.

Beverley Robinson, Esquire, Province Treasurer.

DEPUTY TREASURERS.

H. G. Clopper, Esq. Fredericton.	D. Stewart, Esq. Restigouche.
Jas. Campbell, Esq. St. Andrews.	John Miller, Esq. Bathurst.
A. J. Wetmore, Esq. St. George.	Bill Chappell, Esq. Bay Verte.
C. H. Joubert, Esq. West Isles.	James Ketchum, Esq. Woodstock.
Robert Watson, Esq. St. Stephen.	Thos. B. Moore, Esq. Band of Pe- todicodiac. [Manan.]
T. H. Peters, Esq. Miramichi.	William Frankland, Esq. Grand
M. L. Baekhouse, Esq. Sackville.	Gilbert Wall, Esq. near Cape Por- mequine, Westmorland.
J. W. Weldon, Esq. Richibucto.	
Daniel Haunington, Esq. Shediac.	

Mr. Henry Whiteside, Treasury Clerk.

OMS.

archer.
d Vessels.

, Esq. Dalhousie;
e. Esquire, Wood-
Principal Officers

aint John.

eth, Esq. Comp-
ssels,—under the
ort of Saint John.

g Surveyor.

at St. Andrews.

d, Esq. Grand

sq. St. George.

urer.

Restigouche.
Bathurst.
Bay Verte.
q. Woodstock.
q. Bend of Pe-
[Manan].
Esq. Grand
ar Cape Por-
morland.

Benjamin C. Chalener, Esquire, Gauger of Dutiable Articles, and Sur-
veyor at the Port of Saint John.
David W. Jack, Esquire, ditto ditto, at Saint Andrews.
George Henderson, Esquire, ditto ditto, at Miramichi.
William Payne, Provincial Tide Waiter at Fredericton.
John Abram, ditto ditto, at Saint John.
Stephen Humbert, Esquire, Special ditto at ditto.
Edmund Walsh, } Tide Waiters in Charlotte County.
Charles Smith, }
Alexander Anderson, Tide Waiter at Bathurst.
Thomas Griffiths, Saint John, } Tide Surveyors under the Treas-
Newton Dunaresq, Ristigouche, } surer.
W. Joplin, Tide Surveyor, Gauger and Weigh-master at Miramichi.
Thomas Millidge, } Esquires, Appraisers of Dutiable Articles at Saint
John Robertson, } John.

Collectors of Duties on Horses and Cattle.

James Upham, Woodstock.		J. E. Nicholson, Wakefield, &c.
Benjamin Reed, Douglas.		— — —, Fredericton, &c.

UNIVERSITY OF KING'S COLLEGE, Fredericton.

Patron—THE KING.

Chancellor—His Excellency the Lieutenant-Governor of the Province;
or in his absence, the President of the Province.
Visitor—The Right Reverend the Lord Bishop of the Diocese.
President—The Venerable the Archdeacon of the Province.
Vice Pres.—(Resident & Acting Principal)—The Rev. E. Jacob, D. D.
Professors— { Reverend Edwin Jacob, D. D.
 { Reverend James Sommerville, L. L. D.

COUNCIL:

His Excellency the Chancellor,		The Chief Justice,
The President,		Judge Botsford,
The Vice President,		Speaker of the House of Assembly.
The Professors,		Secretary of the Province.

Registrar—The Honorable George Frederick Street.

*The Governor and Trustees of the Madras School
in New-Brunswick.*

The Lieutenant Governor or Commander-in-Chief for the time being.
The Lord Bishop of the Diocese. The Chief Justice.
The Members of His Majesty's Council, (not being Judges of the Su-
preme Court.)
The Speaker of the House of Assembly. The Judge of the Admiralty.
The Mayor and Recorder of Saint John.
The Ecclesiastical Commissary of the Province.
The Rector and Church Wardens of Trinity Church in Saint John.
Together with—The Honorable Edward J. Jarvis, the Rev. Geo.
Burns, D. D. and William Scovil, Esquire.
Robert F. Hazen, Esq. Treasurer—J. W. Boyd, Esq. Clerk.

Provincial Vaccine Establishment of New-Brunswick.

CENTRAL STATION—SAINT JOHN,

His Excellency the Lieutenant Governor and His Majesty's Council,
Patrons of the Institution,
Honorable William Black, Director of the Institution.

COMMITTEE :

Fredericton—The Reverend James Sommerville, L. L. D. and the
Honorable William F. Odell.

Saint Andrews—The Reverend Jerome Alley, D. D.

VACCINATING SURGEONS :

Saint John—John Boyd, Esquire, M. D.

Fredericton—The Medical Officer in charge of the Troops.

PROVINCIAL MARINE HOSPITAL,

For the Relief of Sick and Disabled Seamen.

Commissioners—The Hon. William Black, Ralph M. Jarvis, William
Scovil, John Ward, junior, and Thomas Barlow, Esquires.

Secretary and Treasurer—L. Donaldson, Esquire.

Physician and Surgeon—John Boyd, Esquire, M. D.

PROVINCIAL AGENT FOR EMIGRANTS,

Saint John—Alexander Wedderburn, Esquire.

New-Brunswick Auxiliary Bible Society.

President—John M. Wilnot, Esquire.

Vice-Presidents— { Hon. Judge Parker, Hon. Charles J. Peters,
John Ferguson, William B. Kinnear, and
Neville Parker, Esquires.

Treasurer—John M. Robinson, Esquire.

Secretary—Mr. James Patterson, Rector of the Grammar School.

Depository—Store of Mr. L. H. Deveber, Prince Wm. street, St. John.

BRANCH SOCIETIES.

Saint John Ladies' Bible Association.—Mrs. Neville Parker, Pre-
sident; Mrs. Ferguson, Treasurer; Mrs. D. Scovil, Secretary.

St. Andrew's Ladies' Bible Association.—Mrs. D. W. Jack, Pre-
sident; Mrs. Shepherd, Treasurer; Mrs. Putnam, Secretary.

Saint Stephen.—G. Hill, Esquire, President; Thos. Armstrong, Esq.
V. President; Aaton Upton, Esq. Treas.; Mr. D. A. Rose, Secy.

Grand Lake.—Mr. John Robertson, President; Mr. G. Clark, Vice
President; Mr. D. Palmer, Treasurer; Mr. John Palmer, Sec'y.

Sussex Vale.—Mr. Wm. Cones, President; Samuel Freeze, Esq.
Treasurer; _____, Secretary.

Springfield.—Mr. Vincent White, President; Rev. S. Bancroft, V.
President; Capt. John Davis, Treasurer; Mr. C. Hamilton, Sec'y.

Washademoac.—Elder Richard Wills, President; Mr. Isaac Word-
den, Treasurer; Mr. William Day, Secretary.

Westmorland.—William Crane, Esq. President; Hon. Edward B.
Chandler, Treasurer; Mr. James Ross, Secretary.

ew-Brunswick.
Majesty's Council,

on.

L. L. D. and the

Troops.

FAL,
Seamen.

M. Jarvis, William
arlow, Esquires.

GRANTS,
quire.

Society.

s. J. Peters,
near, and

mar School.
street, St. John.

le Parker, Pre-
il, Secretary.
W. Jack, Pre-
Secretary.
rmstrong, Esq.
A. Rose, Secy.
E. Clark, Vice
Palmer, Sec'y.
Freeze, Esq.

. Bancroft, V.
milton, Sec'y.
. Isaac Wor-
Edward B.

BANK OF NEW-BRUNSWICK—(IN SAINT JOHN.)

Capital, £50,000—with power to increase to £100,000.

Solomon Nichols, Esquire, President.

DIRECTORS.—Thomas Barlow, John Boyd, Robert W. Crook-
shank, L. H. DeVeber, Hugh Johnston, Robert F. Hazen, James Ken-
tor, James Kirk, Nehemiah Merritt, Thomas Millidge, William Sco-
vil, and F. A. Wiggins, Esquires.

Zalmon Wheeler, Esquire, Cashier.

Neville Parker, Esquire, Solicitor.

James William Boyd, Esquire, Notary.

COMMERCIAL BANK OF NEW-BRUNSWICK.

(IN SAINT JOHN.)

INCORPORATED BY ROYAL CHARTER.

Capital, £150,000.

Charles Ward, Esquire, President.

DIRECTORS.—Peter Duff, Henry Gilbert, John Hammond, Ralph
M. Jarvis, William Leavitt, Ambrose S. Perkins, Robert Rankin,
A. W. Whipple, James Whitney, Stephen Wiggins, John M. Wilmot,
and John Wishart, Esquires.

Mr. Alexander Balloch, Cashier.

Moses H. Perloy, Esquire, Solicitor.

COMMERCIAL BRANCH BANK—AT MIRAMICHI.

DIRECTORS.—Alex Rankin, J. A. Street, and W. Loch, Esquires.

Mr. George Murray, Cashier.

CITY BANK.—(SAINT JOHN.)

Capital, \$100,000.

John V. Thurgar, Esquire, President.

DIRECTORS.—Isaac L. Bedell, James T. Hanford, Charles Hazen,
James Hendricks, Thomas Leavitt, Hugh Mackay, Thomas Merritt,
E. D. W. Ratchford, John Robertson, Charles C. Stewart, John
Walker, and William Wright, Esquires.

Thomas Jones, Esquire, Cashier.

John M. Robinson, Esquire, Solicitor.

CHARLOTTE COUNTY BANK.—(In St. Andrews.)

Capital, £15,000.

Harris Hatch, Esquire, President.

DIRECTORS.—Thomas Wyer, John Wilson, James Douglas, J.
W. Street, John M'Master, John M'Alister, James Parkinson, and
Lewis Bliss, Esquires.

Mr. John Rodger, Cashier.

CENTRAL BANK OF NEW-BRUNSWICK.

(IN FREDERICTON.)

Capital, £35,000, with power to increase to £50,000.

Henry G. Clopper, Esquire, President.

DIRECTORS.—O. Smith, J. Taylor, F. E. Beckwith, J. Simpson,
T. Pickard, W. J. Bedell, G. J. Dibblee, J. T. Smith, Esquires.

Mr. Robert Gowan, Cashier.

George F. S. Berton, Esquire, Solicitor.

SAINT STEPHEN'S BANK.

Capital—£15,000.

Nehemiah Marks, Esquire, President.

DIRECTORS.—Robert Lindsay, William Porter, Robert M. Todd,
Henry Eastman, George S. Hill, Robert Watson, Gilman D. King,
and James Albee, Esquires.

David Upton, Esquire, Cashier.

George S. Hill, Esquire, Solicitor.

BANK OF BRITISH NORTH AMERICA.

(ESTABLISHED IN LONDON.)

*Capital, £1,000,000 Sterling;—in 20,000 Shares of £50 each,
(Three fourths of which have been subscribed in England,
and the remainder in the North American Colonies),
with power to increase the Capital.*

DIRECTORS.—George De Bosco Attwood, Edward Blount, Robert
Brown, Esquires; Sir Robert Campbell, Baronet; Robert Carter,
William Robert Chapman, James John Cummins, James Dowie, Oli-
ver Farrer, Alexander Gillespie, junior, William Medley, William
Pemberton, George Richard Robinson, M. P., and John Waldron
Wright, Esquires.

Representative of the Court of Directors in America—Robert Car-
ter, Esquire.

PROVISIONAL COMMITTEE,

For conducting the Business of the Branch at Saint John :

James Kirk, E. DeW. Ratchford, John Robertson, Wm. H. Street,
and William Walker, Esquires.

Standing Counsel—Honorable George F. Street, Solicitor General.
Solicitor and Notary—George Wheeler, Esquire.

AGENCIES :

Fredericton—Hon. Thomas Baillie, and John F. Taylor, Esquire.

Saint Andrews—Harris Hatch and John M'Master, Esquires.

Solicitor and Notary—Wellington Hatch, Esquire.

Miramichi—Honorable Joseph Cunard, Henry B. Allison, Esquire.

UNSWICK.

to £50,000.

ent.
with, J. Simpson,
Smith, Esquires.

tor.

K.

nt.
Robert M. Todd,
Gilman D. King,

AMERICA.

es of £50 each,
in England,
Colonies.)

l.
d Blount, Robert
Robert Carter,
James Dowie, Oli-
Medley, William
d John Waldron

ca—Robert Car-

Saint John :

Wm. H. Street,

licitor General.

Faylor, Esquire.

r, Esquires.

Hatch, Esquire.

Allison, Esquire.

BANK OF FREDERICTON.

Capital not to exceed £50,000,

Asa Coy, Esquire, President.

Directors—Thomas T. Smith, Robert Chestnut, William D. Hartt,
Charles Fisher, James Hale, and Joshua Dunn.

Alexander Scott, Esquire, Cashier,
Charles Fisher, Esquire, Solicitor.



NEW-BRUNSWICK FIRE INSURANCE COMPANY.

(IN SAINT JOHN.)

Capital, £50,000.

John M. Wilmot, Esquire, President.

DIRECTORS.—John Boyd, M. D., John Hammond, Gilbert T. Ray,
Robert F. Hazen, Ralph M. Jarvis, Daniel Ansley, William Jarvis,
John Kinnear, Ambrose S. Perkins, William Scovil, and Mark Dole.

Robert F. Hazen, Esquire, Solicitor.
Daniel Jordan, Esquire, Secretary.



CENTRAL FIRE INSURANCE COMPANY,

(IN FREDERICTON.)

Capital, £50,000.

Benjamin Wolhaupter, Esquire, President.

Directors—John Simpson, Robert Chestnut, William D. Hartt,
Charles Fisher, Thomas T. Smith, Spafford Barker, Chas. M'Phers-
son, and J. S. Coy.

Charles Fisher, Esquire, Solicitor.
Mr. William M'Beath, Secretary.

AGENCIES.

Saint John—Duncan Robertson, Esquire, Agent; Messrs. H. M'Kay,
D. J. M'Laughlin, and C. D. Everitt, Committee of Reference.

Saint Andrews—George D. Street, Esquire, Agent; Harris Hatch,
J. M'Master, and James Boyd, Esq's, Committee of Reference.

Newcastle, (Miramichi)—Charles A. Harding, Esquire, Agent.

Chatham, " George Kerr, Esquire, Agent.

Bathurst—William Stephens, Esquire, Agent.

Richibucto—John W. Weldon, Esquire, Agent.

Woodstock—Messrs. J. M. & C. Connell, Agents.



MARINE INSURANCE—SAINT JOHN.

COMMITTEE:

Messrs. David Hatfield, A. S. Perkins, William Jarvis, Hugh
M'Kay, James Whitney, F. A. Wiggins, E. DeW. Ratchford, John
Wishart, N. S. Demill, James Kirk, Robert Summers, John Walker.

Isaac L. Bedell, Esquire, Broker.

PHENIX FIRE OFFICE—LONDON.

ESTABLISHED IN 1784.

Agent for New-Brunswick and Nova-Scotia—James Kirk, Esquire.

WEST OF SCOTLAND FIRE INSURANCE COMPANY.

Head Office, 147, Buchanan Street, Glasgow.

Patron—The Right Honourable the Earl of Glasgow.

Extraordinary Directors—Henry Monteith, Esquire, of Curstairs; John Buchanan, Esquire, of Ardoch; John C. Colquhoun, of Killermont and Garascadden, M P; John M'Kirdy, Esquire, of Birkwood; Patrick Playfair, Esquire, of Dalwarnock; William Dunn, Esquire, of Duntocher; John Greenshields, Esquire, of Kerse; Michael Rownd, Esquire, Banker, Glasgow; William Hesier, Esquire, of Newlands and Barrowfield; Donald Cuthbertson, Esquire, Accountant, Glasgow; Samuel Cooper, Esquire, of Ballendalloch; John Hunter, Esquire, Ardrossan. *Manager*—James J. Duncan, Esquire, Glasgow.

Agent and Attorney for New-Brunswick and Nova-Scotia—John Robertson, Esquire, Saint John, N. B.

HARTFORD FIRE INSURANCE COMPANY.

(HARTFORD, CONNECTICUT.)

Eliphalet Terry, Esquire, President.

Directors—James H. Wills, S. H. Huntington, A. Huntington, jr. Albert Day, Samuel Williams, F. H. Huntingdon, Elisha Colt, and R. B. Ward. *Secretary*—James G. Bolles.

Agent for New-Brunswick—John Robertson, Esq. Saint John.

ÆTNA INSURANCE COMPANY.

Of Hartford, Connecticut.

Capital, \$200,000, (all paid in,) with liberty to increase the same to Half a Million of Dollars.

Thomas K. Bruce, Esquire, President.

James M. Goodwin, Esquire, Secretary.

Mr. Alexander Balloch, Agent for New-Brunswick.

PELICAN LIFE INSURANCE COMPANY.

Spring Gardens and Lombard-street—London.

ESTABLISHED IN 1797.

Agent at Halifax, for Nova-Scotia and New-Brunswick—M. B. Almon, Esquire.—Ditto at St. John for ditto—John Boyd, Esq. M.D.

NEW-YORK LIFE INSURANCE AND TRUST COMPANY.

J. L. Starr, Esquire, of Halifax,

Agent for Nova-Scotia and New-Brunswick.

LONDON.

James Kirk, Esquire.

INSURANCE

Glasgow.

Glasgow.

Esquire, of Curstairs;
Esquire, of Killermore;
Esquire, of Birkwood;
Esquire, of Newlands;
Esquire, of Glasgow;
Esquire, of Glasgow.

Esquire, of Nova-Scotia—John

COMPANY.

Esquire, of Huntington, jr.
Esquire, of Elisha Colt, and
Esquire, of St. John.

NY.

Please the same to

Esquire,
Esquire.

COMPANY.

London.

Esquire—M. B.
Esquire, Esq. M.D.

COMPANY.

Esquire.

NEW-BRUNSWICK MINING COMPANY.

(IN SAINT JOHN.)

Capital, £20,000.

Mr. Henry Chubb, President.

Directors—Thomas Barlow, Edward J. Budd, George F. Campbell, Robert W. Crookshank, Henry Gilbert, James Kirk, E. DeW. Ratchford, Robert Ray, William Scammell, James Vernon, junior, John Walker, and John Ward, jun. Esquires.

T. L. Nicholson, Esquire, Secretary.

SAINT JOHN BRIDGE COMPANY.

Capital, £20,000.

John Robertson, Esquire, President.

DIRECTORS.—Isaac Woodward, Ralph M. Jarvis, Hugh Mackay, John Walker, Edward L. Jarvis, Charles Hazen, George D. Robinson, William Hammond, W. H. Street, Esquires; Rev. F. Coster; P. Besnard, and Thomas L. Nicholson, Esquires.

Duncan Robertson, Esquire, Secretary.

SAINT JOHN WATER COMPANY.

Capital, £20,000.

Lauchlan Donaldson, Esquire, President.

DIRECTORS.—John Robertson, Isaac L. Bedell, Hugh Mackay, W. H. Street, John Ward, junior, James Kirk, Thomas Barlow, Jas. Hendricks, R. W. Crookshank, Beverley Robinson, Robert F. Hazen, Esquires.

Duncan Robertson, Esquire, Secretary.

SAINT JOHN

MECHANICS' WHALE FISHING COMPANY.

Capital, £50,000.

Thomas Nisbet, Esquire, President.

DIRECTORS.—Messrs. John Duncan, C. D. Everitt, William Lawton, James Holman, George Waterberry, and John Wishart, Esquire.

Mr. John Kirby, Secretary.

SAINT JOHN MILLS AND CANAL COMPANY.

Capital, £37,000.

Mark Healey, Esquire, President.

DIRECTORS.—Matthew Bolleo, junior, Seth Bryant, Joseph W. Hale, Nathaniel Mitchell, Esquires.

J. D. Emery, Esquire, Agent.

W. S. Ellisoe, Esq. Civil Engineer.

Mr. William Lot Chadwick, Mill Wright and Constructor.

M. H. Perley, Esquire, Secretary and Treasurer.

LANCASTER MILL COMPANY.

Capital £100,000—with leave to increase to £300,000.

Calvin Spaulding, Esquire, President.

DIRECTORS.—Edward Howe, John Gardner, Isaac Gage, Charles W. Cutler, Esquires.

Mr. Nathan Howe, Agent.

Mr. James M'Gregor, Mill Wright.

Mr. William Fogg, Superintendent of Lumbering.

M. H. Perley, Esquire, Secretary, Treasurer and Steward of Inglewood Manor.

NEW-BRUNSWICK MILL COMPANY.

(MIRAMICHI.)

Capital, £100,000.

The Honorable Joseph Cunard, President.

DIRECTORS.—E. N. Kendall, T. H. Peters, James Purinton, John Russ, Nathaniel Blake, Ashur Robins, Thomas Boies, and Alexander M'Gregor.

The Honorable Joseph Cunard, Treasurer.

Duncan M'Grigor, Secretary.

New-Brunswick and Nova-Scotia Land Company.

(INCORPORATED IN LONDON.)

Capital, £200,000—with power to increase to £400,000.

Governor—John Labouchere, Esquire.

Deputy Governor—Edward Blorent, Esquire.

DIRECTORS.—Sir John Burke, Baronet, George H. Hooper, Ambrose Humphreys, Joseph Kay, John T. Maubert, John Moxen, David Stewart, Leacock P. Wilson, John Wright, Esquire.

Acting Director—John Bainbridge, Esquire.

Auditors—Bartholemew Jaffrey, William Newton, George Palmer, Esquires.

Bankers—Messrs. Williams, Deacon, Labouchere & Co., Birchin Lane; Wright & Co., Henrietta-street, Covent Garden.

Solicitor—Nathaniel Hooper, Esquire.

Acting Agent at Fredericton—Mr. John Stevens.

Ditto at Campbell—Mr. John Burnett,

Commissioner at Fredericton—Edward Nicolas Kendall, Esq. R. N.

Solicitor—Charles S. Putnam, Esquire.

Honorary Commissioner at Chatbam, Miramichi—H. Cunard, Esq.

Resident Agent at the South West Branch—W E Cormack, Esq.

Resident Agent at Saint John—John V Thurgar, Esquire

Colonial Treasurers—Honorable Joseph Cunard, Chatham, (Miramichi); Honorable Samuel Cunard, Halifax, N. S.

Company's Office—No. 15, King's Arms Yard, London.

PANY.
to £300,000.

dent.
Menac Gage, Charles

Steward of Ingle-

MPANY.

dent.
James Purinton, John
ies, and Alexander

surer.

nd Company.

)
to £400,000.

re.
Esquire,
e H. Hooper, Am-
ohn Moxen, David

, George Palmer,

e & Co., Birchin
den.

endall, Esq. R. N.

H. Cunard, Esq.
Cormack, Esq
Esquire
Chatham, (Mira-

rd, London.

SAINT JOHN STAGE COACH COMPANY.

John C. Vail, Xenophon Cougle, and John Lockhart, Proprietors.

The Company's Coaches leave St. John every Monday morning for Saint Andrews, and for Amherst, N. S.: the one for the latter place, stopping at Hammond River, Norton, Sussex Vale, Bend of Peticodiac and Dorchester; and on its return, at present, (Nov. 1836) leaves Amherst every Wednesday afternoon, Dorchester on Thursday morning, and arrives in St. John on Friday afternoon.—The other Coach starts from Saint Andrews every Wednesday morning for Saint John.

☞ Mail Stages also leave Saint John on Wednesdays for Halifax; (during the winter season,) on Mondays and Fridays for Fredericton, and on Saturdays and Wednesdays for Saint Andrews.

☞ During the summer, steam-boats ply daily between Saint John and Fredericton—three times a week between Saint John and Saint Andrews, Eastport, &c.—three times a week between Saint John and Digby, Annapolis, &c.—and occasionally to Windsor, Amherst, Dorchester, Bend of Peticodiac, &c.

POST-OFFICE DEPARTMENT:

John Howe, Esquire, Deputy Postmaster General for Nova-Scotia and New-Brunswick.

POSTMASTERS IN NEW-BRUNSWICK.

John Howe, Junior, Esquire, Saint John.
William B. Phair, Esquire, Fredericton.
George F. Campbell, Esquire, Saint Andrews.
Thomas Armstrong, Esquire, Saint Stephen.
Gideon Knight, Esquire, Saint George.
Thomas Keillor, Esquire, Dorchester.
James Caie, Esquire, Miramichi.
John W. Weldon, Esquire, Richibucto.
Thomas M. DeBlois, Esquire, Bathurst.
Richard English, Esquire, Woodstock.
Asa Davidson, Esquire, Kingston.
J. A. Reeve, Esquire, Sussex Vale.
Esquire, Quaco.

SUPERVISORS OF GREAT ROADS, IN NEW-BRUNSWICK.

James A. M'Lauchlan—Fredericton to the Canada Line.
L. B. Rainford—Fredericton to Saint John, by the Nerepis.
David Crocker—from Swini's Ferry to Newcastle.
A. Goodfellow—from Fredericton to Donk's.
Alex. Goodfellow—Chatham to Richibucto, and Newcastle to Fo-
Dudley Perley—Richibucto to Chediac. [reins'.
Joseph Read—Foreois' to Ristigouche.
Honorable A. E. Botsford—Chediac to the Bend of Peticodiac, and
Dorchester to Chediac.
George Anderson—Carleton to Saint Andrews.

Benjamin L. Peters—Saint John to the Hammond River, and from
 Hammond River to Westmorland.
 Nathaniel Hubbard—Short Ferry to the Finger Board.
 Caleb Wetmore—Head of Bellisle to forks of road at A. Hennigar's.
 Hon. A. E. Lotsford—King's County Line to the Messequash.
 L. B. Rainsford—Fredericton to St. Andrews, by Hanwill Settlement.

ROADS AND DISTANCES.

From St. John to Fredericton, by the Nerepis.

	Miles.
Harding's, (Yorkshire tavern,)	4
Brundage's,	10
Mather's, (Douglas Arms,)	4
Purdy's,	12
Darby Gillan's,	10
W. Smith's	7
Morrison's, (Oromocto,)	7
Fredericton,	11
Total,	65

On the Eastern side the river.

To Black's farm,	7
Gondola Point,	9
Kingston,	4
Head of Bellisle,	14
Washademoac,	13
Jemesq Ferry,	6
Tilley's, (Sheffield,)	13
Widow Perley's,	8
Fredericton,	12—86

St. John to St. Andrews.

To Byrne's, Lakefield,	9
Tilton's, Musquash,	6½
M'Laughlin's,	6
Gray's,	5
M'Gowan's, (half-way,)	6½
Watters',	3
Shaw's, Magaguadavic,	9
Burns', St. Patrick,	10
Saint Andrews,	12—67

St. John to Sussex Vale.

To Fearerby's,	8
Beatty's,	6½
Hampton Ferry,	10
Hayes',	5½
Finger Board, Norton,	4½
Mill Stream, Lyons,	7
Sussex Vale,	6—47½

42

St. John to Martin's Head.

	Miles.
To Cody's,	11
Beatty's,	9
Seymour's,	11
Vaughan's Creek,	1½
Melvin or Fuller's beach,	4½
Big Salmon River,	3
Tufts, (along shore,	1½
Little Salmon River,	4
Martin's Head,	4
Total,	48½

St. John to Amherst, Nova- Scotia.

To Hennigar's,	9
Wetmore's,	8
Ketchum's,	4
Hampton Ferry,	7
Haye's,	5½
Baxter's, (Finger Board,)	4½
Roahe's,	10
Cougle's,	3

To Sussex Vale,

To Walter's, foot of the Moun- tain,	13
Leck's,	5
Holstead's,	7
Russell's,	10
Lewis's,	15

To the Bend of Peticodiac, 96

Charter's, Memramcook,	15
Weldon's, Dorchester,	8
Bass's, Westcock,	9
Wells', Tantamar,	8
Bent's, Amherst,	10

Total, 146

River, and from

board.
at A. Hennigar's.
Messequash.
nwill Settlement.

artin's Head.

Miles.

11
9
11
1 1/2
4 1/2
3
1 1/2
4
4
—
48 1/2

herst, Nova-
is.

9
8
4
7
5 1/2
4 1/2
10
3
—
46

Board,)

13
5
7
10
15
—

eticodiac, 96

15
8
9
8
10
—
146

Amherst to Halifax.

	Miles.
To Hewsop's, River Philip,	20
Clark's, foot of the mountain,	15
Gourley's, Onslow,	20
Witter & Blanchard, Truro,	5
Corbet, Gay's River,	26
Shuliz's,	15 1/2
Fuliz's,	11
Halifax,	11 1/2

Total, 124

Band of Petitediac to Richibucto.

To Smith's, Shediac,	15
Lannan's,	1
Long's, Cocaigne,	8
Smith's, Buctouche,	10
M'Dermott's, Big Buctouche,	1
Harris's,	7
Donnelly's,	8

Total, 50

Richibucto to Miramichi.

To Rankin's,	12
Dickens', Bay du Vin,	10 1/2
M'Beath's, Black River,	11 1/2
Johnston's, Chatham,	6

Total, 40

Chatham to Bathurst, (Bay de Chaleur.)

To Goodfellow's,	6
Curry's,	8 1/2
Forein's, (half-way house,)	15
Dempsters',	10 1/2
Court House,	8 1/2

Total, 48

Bathurst to Restigouche.

To Arsineaus,	12
Daley's,	12
Harvey's, Nash's Creek,	10 1/2
M'Pherson's,	9 1/2
Fleining's, Dalhousie,	10
Reid's,	7 1/2
M'Neil's, Campbelltown,	9

70 1/2

Fredericton to Miramichi.

	Miles.
To Brown's,	11
Young's,	10
M'Leod's,	4
Boies's,	20
Hunter's,	14
De Cautline's,	10
Cochrane's,	14
Robinson's,	12
Parker's,	8

Total, 105

Fredericton to Quebec.

To Burgoyne's Ferry,	16
L. Heustis's,	7
M'Laughlan's,	13
Jones's,	14
Woodstock Ferry,	7
Harvey's,	8-65
Dingee's,	14
Gallop's,	9
Kearney's, river de Chute,	11
Everitt's,	15
Restook river,	3
Ryan's, Great Falls,	15-130
Coombe's,	12
Vital Thibideau's,	15
Madawaska Chapel,	7
Hebert's,	8
Entrance of the Madawaska	1
Do. of Lake Tamisquats,	24
Do. of the Portage,	15
River St. Lawrence,	36
Kamouraska,	15
Quebec,	90-218

Total, 348

From Digby to Halifax.

To Annapolis,	19
Kentville,	58
Windsor,	27
Halifax,	45-149

Digby to Shelburne.

To Everitt's, Weymouth,	19
Journey's, Siasiboo,	10
Yarmouth Church,	44
Larkin's, Pubnice,	33
Kendrick's, Barrington,	13
Hargrave's, Shelburne,	21-140

CLERGY OF THE ESTABLISHED CHURCH OF ENGLAND.

The Right Rev. JOHN, Lord Bishop of Nova-Scotia, exercising by His Majesty's Letters Patent, Episcopal Jurisdiction over the Province.

Venerable George Coster, A. M., Archdeacon.

Reverend Benjamin G. Grny, D. D., Rector of Saint John.
Reverend I. W. D. Gray, Assistant Missionary at Saint John.
Reverend Gilbert L. Wiggins, Minister of Grace Church, Portland.
Reverend Frederick Coster, Rector of Carleton.
Reverend George Coster, M. A., Rector of Fredericton.
Reverend Abraham Wood, Rector of Waterborough.
Reverend Jerome Alley, D. D., Rector of Saint Andrews.
Reverend Skeffington Thompson, L. L. D., Rector of St. Stephen.
Reverend James Sommerville, L. L. D., Rector of Douglas.
Reverend Raper Milner, Rector of Manguerville.
Reverend Samuel D. L. Street, Rector of Woodstock.
Reverend Samuel R. Clarke, Rector of Gagetown.
Reverend Nelson Arnold, Rector of Sussex.
Reverend Elias Scovil, Rector of Kingston.
Reverend W. E. Scovil, Assistant Missionary at Ditto.
Reverend John Black, A. M., Rector of Sackville.
Reverend Christopher Milner, Rector of Westfield and Greenwich.
Reverend Mr. Hudson, Rector of Miramichi.
Reverend Samuel Thompson, Rector of Saint George.
Reverend William Walker, Rector of Hampton.
Reverend Alexander C. Sommerville, Rector of Bathurst.
Reverend Charles Wiggins, Rector of Prince William.
Reverend George Townshend, officiating at Westmorland.
Reverend George S. Jarvis, Rector of Shediac.
Reverend John Dunn, Rector of St. Paul's Church, Grand-Manan.
Reverend Henry James Jarvis, Rector of Richibucto.

CLERGY OF THE ESTABLISHED CHURCH OF SCOTLAND.

Fredericton—Reverend John Birkmyre, A. M.
Saint John—*St. Andrew's Church*, Reverend Robert Wilson, A. M.; *St. Stephen's Church*, Reverend William Andrew.
Saint Andrews—Reverend Alexander M'Lean.
Saint James—Reverend Peter M'Intyre.
Newcastle (Miramichi)—Reverend James Souter, A. M.
Chatham (Miramichi)—Reverend Robert Archibald.
Restigonche—Reverend James Steven.
Richibucto—Reverend James Hannay.
Alawick and Glenelg—Reverend Simon Fraser.
Sussex Vale, Norton, and Springfield— — —
Itinerating Missionary— — —

PRESBYTERIAN CHURCH OF NOVA-SCOTIA.

In connexion with the United Associate Synod, Scotland.

Chatham—Rev. John M'Curdy.
New Mills and Bathurst—Rev. James Waddell.
New Carlisle, &c. (Bay Chaleur)—Rev. Anthony F. M'Cabé.

CHURCH OF

...ia, exercising by His
...ver the Province.
...chdeacon.
...of Saint John.
...y at Saint John.
...e Church, Portland.
...
...ederickton.
...ough.
...t Andrews.
...ctor of St. Stephen.
...r of Douglas.
...dstock.
...wn.

...at Ditto.
...ille.
...eld and Greenwich.

...eorge.
...Bathurst.
...William.
...Westmorland.
...rch, Grand-Manan.
...ucto.

CHURCH OF

...nd Robert Wilson,
...William Andrew.

...ter, A. M.
...ibald.

...-SCOTIA,
...nod, Scotland.

...y F. M'Cabe.

ROMAN CATHOLIC CLERGY

*Of the Diocese of Charlotte Town, Prince Edward Island,
and New-Brunswick.*

Very Reverend Bernard D. M'Donald, Vicar General and Admini-
strator of the Diocese,—*Sede vacante.*

- Very Rev. William Dollard, V. G. Fredericton.
- Rev. James Dunphy, Saint John,
- Rev. Richard Vereker, Coadjutor.
- Rev. John Cummins, Saint Andrews.
- Very Rev. Anthony Gagnon, V. G. Shediac.
- Rev. Joseph Paquet, Richibucto.
- Rev. Joseph Couture, Memramcook.
- Rev. Michael Egan, Miramichi.
- Rev. Mr. Mercier, Madawaska.
- Rev. Mr. Madrau, Bathurst.
- Rev. Mr. M'Hearn, Carrequet.
- Very Rev. Bernard D. M'Donald, V. G. Charlotte Town, P. E.
- Rev. Mr. Morris, Coadjutor. [Island.]
- Rev. John M'Donald, East Point, P. E. I.
- Rev. Silvester Piorier, Miscoush, do
- Rev. Charles M'Donald, Saint Andrews, do.

STATIONS OF THE WESLEYAN MISSIONARIES

In the New-Brunswick District, for 1837.

- Saint John—Reverend Enoch Wood, Arthur M'Nutt, Richard Shep-
herd; Reverend Stephen Bamford, Supernumerary.
- Fredericton—Reverend George Miller, and Henry Daniel.
- Sheffield and Gagetown—Reverend William Smithson.
- Saint Stephen's, Saint David's, and Saint Andrew's—Reverend
Sampson Bushy, Albert Desbrisay, and Richardson Douglas.
- Westmorland—Reverend Richard Williams, and Joseph F. Bent.
- Peticodiac and Buctouche—Reverend William Bannister.
- Sussex Vale—Reverend Wesley C. Beals.
- Annapolis and Digby—Reverend George Johnson.
- Bridgetown and Aylesford—Rev. William Temple, and Peter Sleep.
- Miramichi—Rev. John B. Strong; Humphrey Pickard, Assistant.
- Woodstock and Wakefield—Reverend Michael Pickles.
- Bathurst—William M. Leggett. Grand Manan—One to be sent.

BAPTIST MINISTERS IN NEW-BRUNSWICK.

- Fredericton—Rev. F. W. Miles.
- Canning—Rev. Benjamin Coy.
- Saint John—Rev. J. D. Casewell.
- Prince William—Rev. B. L. Ham-
mond and Rev. Wm. Saunders.
- Norton—Rev. Samuel Bancroft.
- Salisbury—Rev. Joseph Crandal.
- Dorchester—Rev. William Sears.
- Hampton—Rev. Samuel Bancroft.
- Upham—Rev. David Crandal.
- Madamkissway—Rev. T. Saunders.
- St. Martins—Rev. John Masters.
- Sussex Vale—Rev. Titus Stone.
- St. George—Rev. S. Robinson.
- St. Stephen—Rev. A. D. Thomson.
- Grand Lake—Rev. M. Doyle.
- Greenwich—Rev. Jas. Blakeney.
- Andover—Rev. B. L. Hammond.
- Wickham—Mr. Joseph Skinner.
- Waterborough—Rev. D. Chase.
- African Church—Rev. B. L. Ham-
mond.

MINISTERS LICENSED TO SOLEMNIZE MARRIAGE,

Under the Provincial Act of Assembly.

Rev. Sampson Busby,	Rev. F. W. Miles,	Rev. Rich'd Shepherd,
Samuel Bancroft,	Thomas Magee,	John B. Strong,
Joseph Crandal,	John Masters,	Gilbert Spurr,
Albert Desbrisay,	John M'Curdy,	William Sears,
Michael Doyle,	Arch. M'Callum,	James Stevens,
Henry Daniel,	Michael Pickles,	A. D. Thomson,
George Johnson,	Saml. Robinson,	Rich'd Willinms.
J. D. Casewell,		

CENTRAL COMMITTEE, (at Saint John,)

*For Managing the Fund for the promotion of Missionary
and other objects connected with the welfare of the
Scottish Church in New-Brunswick—*

Daniel Leavitt, Robert Rankin, John Robertson, and Thos. Walker,
Esquires.—Robert Rankin, Esquire, Treasurer.

NEW-BRUNSWICK BAPTIST EDUCATION SOCIETY.

Reverend Joseph Crandal, President.
Reverend John Masters, and } Vice-Presidents.
John M. Wilmot, Esquire, }
Mr. Asa Coy, Treasurer.
Messrs. John T. Smith and E. E. Packard, Secretaries.

BOARD OF DIRECTORS.

Mr. Zebulon Estey,	Mr. Thomas Prince,
Solomon Hersey,	Thomas Edgett,
John Berryman,	Joseph Pickel,
Benjamin Gale,	Charles Miles,
Charles D. Everitt,	Archelaus Hammond,
John Smith,	Amos Dow,
Henry Blakslee,	Hollon Estey,
Philo Seelye,	John Crandal,
Hollon Bridges,	James Butler,
David Coy,	George Hayward, Esquire,
Z. G. Gabel,	John J. Donald, Esquire,
John E. Hartt,	James Moran, Esquire.

COMMITTEE OF MANAGEMENT:

Reverend F. W. Miles,	
William B. Kinnear, Esq.	Mr. John T. Smith,
Mr. Jarvis Ring,	George Miles,
Aaron Hartt,	William D. Hartt.

TEACHERS IN THE MALE DEPARTMENT:

Reverend F. W. Miles, Principal; Mr. Jarvis W. Hartt, Assistant.

IN THE FEMALE DEPARTMENT:

Mrs. F. W. Miles, Principal; Miss. P. B. Brown, Assistant.

E MARRIAGE,

mbly.
Rich'd Shepherd,
John B. Strong,
Gilbert Spurr,
William Senrs,
James Stevens,
A. D. Thomason,
Rich'd Willinms.

John,)
of Missionary
ure of the
t—
d Thos. Walker,
asurer.

UCATION

secretaries.
ce,
ett,
y,
mond,
Esquire,
quire,
ire.
th,
Hartt.
tt. Assistant.
Assistant.

COUNTY OF YORK.

John Allen, Peter Fraser, Hon. Thomas C. Lee, and John Robinson, Esquires, Justices of the Inferior Court of Common Pleas.

John Allen, Peter Fraser, Hon. Thomas C. Lee, John Robinson, Jacob Ellegood, Henry Smith, James A. MacLauchlan, Thomas Emerson, Thomas Jones, Jedediah Slason, George Minchin, James Harrison, William Davidson, Patrick Campbell, James Miles, Ross Currie, Edward Nicolas Kendall, Robert Power, (of the Quorum) and Adam Allen, Esquires, Justices of the Peace.

Edward W. Miller, Esquire, High Sheriff.—William M'Beath, Deputy Sheriff.

Henry G. Clopper, Esquire, Keeper of the Rolls and Clerk of the Peace and Inferior Court of Common Pleas.

Henry G. Clopper, Esquire, Register of Deeds and Wills.

William Woodfurde, Esquire, Coroner.

Mark Needham, Esquire, County Treasurer.

Honorable Charles J. Peters, Honorable George F. Streat, Honorable John S. Saunders, Daniel L. Robinson, George J. Dibblee, Chas. S. Putnam, Charles P. Watmore, George F. S. Berton, Lemuel A. Wilmot, Charles Fisher, William H. Needham, George F. H. Minchin, William H. Odell, Stephen Miller, and David S. Kerr, Esquires, Commissioners for taking Affidavits in the Supreme Court.

Peter Fraser and William Tyng Peters, Esquires, Commissioners for taking Bail in the Supreme Court.

James A. MacLauchlan, John Allen, Jacob Ellegood, John Robinson, and James Harrison, Esquires, Commissioners for Solemnizing Marriage.

Asa Coy, Francis E. Beckwith, Murk Needham, and F. W. Hatheway, Licensed Auctioneers.

FREDERICTON SAVINGS' BANK.

His Excellency the Lieutenant Governor, Patron,

_____, President.

Peter Fraser, Esquire, Vice President,

Henry G. Clopper, Esquire, Secretary,

John F. Taylor, Cashier and Register.

FREDERICTON AUXILIARY BIBLE SOCIETY.

President, _____.

Treasurer, Peter Fisher, Esq. Secretary—James Taylor, Esq.

FREDERICTON LIBRARY.

Honorable John Simcoe Saunders, President.

George J. Dibblee, Esq. Vice President.

J, E, Woolford, Wm, J, Bedell, and Jas, Taylor, Esqrs, Committee,

J, E, Woolford, Esquire, Secretary and Treasurer.

George Lee, junior, Librarian.

TERMS—Five Pounds on admission, and Twenty Shillings annually.

FREDERICTON SOCIETY OF SAINT ANDREW.

John Simpson, Esquire, President,
Mr. Robert Gowan, 1st Vice President,
Mr. Thomas Stewart, 2d ditto ditto,
Mr. John F. Taylor, Treasurer,
Mr. John Gregory, Secretary,
Reverend Jas. Somerville, L. L. D. }
Reverend John Birkmyre, A. M. } Chaplains.

FREDERICTON SOCIETY OF SAINT PATRICK.

Honorable Thomas Baillie, President,
George Minchin, Esquire, Vice President,
Mr Joseph Beak, Treasurer,
Mr Matthew Braanen, Secretary,
Mr Stephen White, Assistant Secretary.

FREDERICTON SOCIETY OF SAINT GEORGE.

Honorable George Shore, President,
J. E. Woolford, and }
Honorable G. F. Street, } Vice Presidents,
Venerable Archdeacon Coater, Chaplain,
George F. S. Berton, Esquire, Treasurer and Secretary.

**FLORAL AND HORTICULTURAL SOCIETY OF NEW-BRUNSWICK,
(AT FREDERICTON.)**

Mr Woolforde, President,
Mr W. Wilmot, Mr Fraser, and Mr Street, Vice Presidents,
Mr R. Gowan, Treasurer,
Mr Putnam, Corresponding Secretary,
Mr G. Lee, junior, Recording Secretary.

COUNCIL.—Messrs. Watts, W. T. Peters, D. L. Robinson, C. Fisher, Kendall, Clopper, S. Fleming, Dibblee, Bertou, C. Lee, Reverend Mr Birkmyre, Mr L. A. Wilmot.

FIREWARDS IN FREDERICTON.

Honorable George Shore, Honorable Thomas Baillie, Jedediah Slason, George Minchin, Mark Needham, William Wilmot, William D. Hartt, and John A. Beckwith, Esquires.

FREDERICTON UNION FIRE CLUB.

Benjamin Wolhaupter, Esquire, President.
Asa Coy, Esquire, Vice President.

COUNTY OF CHARLOTTE.

Hugh Mackay, Thomas Wyer, Hon. James Allanshaw, James Rait, James Douglas, Esquires, Justices of the Inferior Court of Common Pleas.

Hugh M Kay, Peter M'Callum, Thomas Armstrong, Moses Vernon, William Frankland, Thomas Wyer, Hon. James Allanshaw, James Rait, James Douglas, Rev. Jerotie Alley, John Wilson, Tristram

ANDREW.

blains.

PATRICK.

GEORGE.

nd Secretary.

NEW-BRUNSWICK,

et, Vice Presidents,

D. L. Robinson, C.
p, Bertou, C. Lee,

N,
illie, Jedediah Sla-
Vilmot, William D.

UB.

TTE.

shaw, James Rait,
Court of Common

ng, Moses Vernon,
Allanshaw, James
Wilson, Tristram

Moore, Patrick Clinch, David Mowat, Samuel Abbott, William Ker,
George Porter, J. White, Wilford Fisher, Joshua Knight, Cavalier
Jouett, William Garnet, Nehemiah Marks, John M'Laughlin, Jas.
rink, W. F. W. Owen, Jacob Allen, (of the Quorum,) J. B. Ma-
er, and J. Snell, Esquires, Justices of the Peace.

Harris Hatch, Esquire, Keeper of the Rolls, and Clerk of the Peace,
nd Inferior Court of Common Pleas.

Colin Campbell, Esquire, High Sheriff.

David Mowatt, Esq. Coroner. David W. Jack, County Treasurer.
Harris Hatch, Esquire, Register of Deeds and Wills.

The Justices of the Pleas, together with Charles R. Hatheway, Jo-
ph N. Clark, Patrick Clinch, Harris Hatch, Alfred L. Street,
George S. Hill, Samuel H. Whitlock, William Ker, Thomas Chaud-
r, S. G. Andrews, Richard M. Andrews, Alexander Campbell, Sa-
muel Abbot, and Wilford Fisher, Esquires, Commissioners for taking
fidavits in the Supreme Court.

Hugh Mackay, Thomas Wyer, Samuel Abbot, Joseph N. Clark,
Charles R. Hatheway, Wilford Fisher, and Patrick Clinch, Esquires,
commissioners for taking Bail in the Supreme Court.

Hugh Mackay, Tristram Moore, Hon. James Allanshaw, James
haffey, Thomas Wyer, Peter M'Callum, John Wilkinson, and W.
W. Owen, Esquires, Commissioners for Solemnizing Marriage.

Harris Hatch, Esquire, Issuer of Marriage Licenses.

J. H. Whitlock, William Garnett, James Boyd, Samuel Abbot, Par-
nson & Roberts, William M'Leen, Edward Wilson, John M'Kean,
M'Lorinau, and T. P. Shaw, Licensed Auctioneers.

HARLOTTE COUNTY AGRICULTURAL AND EMIGRANT SOCIETY.

Established in 1820.—SIR HOWARD DOUGLAS, Bart. Patron.

r. Samuel Frye, President; Thos. Wyer and H. Hatch, Esquires,
Vice Presidents; S. H. Whitlock, Esq. Treasurer; George N.
Smith, Esquire, Secretary. Committee—Joseph Walton, Wm.
Douglas, D. Mowat, C. Campbell, and James Rait, Esquires.

PUBLIC GRAMMAR SCHOOL IN SAINT ANDREWS.

President—Reverend Dr. Alley.

Directors:—Colin Campbell, David W. Jack, Thomas Wyer, and
S. Frye, Esquires. Master—Reverend George Cassell.

MARINE HOSPITAL—SAINT ANDREWS.

Commissioners—Harris Hatch, Wm. Ker, and D. W. Jack, Esquires.

COUNTY OF SUNBURY.

David Burpe, Thomas O. Miles, and Theodore V. W. Clowes, Es-
quires, Justices of the Inferior Court of Common Pleas.

David Burpe, Thomas O. Miles, Theodore V. W. Clowes, Isaac
Hubbard, Clapman Smith, Stephen Peabody, Charles F. Street, Na-
naniel Hubbard, James Tilley, George Hayward, Charles Hazen, (of
the Quorum,) and William Hoyt, Esquires, Justices of the Peace.
John Hazen, Esquire, High Sheriff.

George F. S. Borton, Esquire, Keeper of the Rolls, and Clerk of the Peace, and Inferior Court of Common Pleas.

Nathaniel Hubbard, Esquire, Register of Deeds and Wills.

James Hazen, Geo. B. Covert, and Enoch Barker, Esqrs. Coroners. Isaac Hubbard, Elijah Miles, David Burpe, Henry T. Partelow, and T. V. W. Clowes, Esquires, Commissioners for taking Bail in the Supreme Court.

Isaac Hubbard, Elijah Miles, David Burpe, H. T. Partelow, and T. V. W. Clowes, Esquires, Commissioners for taking Affidavits in the Supreme Court.

David Burpe, Thomas O. Miles, John Hazen, and Stephen Peabody, Esquires, Commissioners for Solemnizing Marriage.

QUEEN'S COUNTY.

Honorable Harry Peters, Valentine H. Peters, and Samuel Scovil, Esquires, Justices of the Inferior Court of Common Pleas.

Valentine H. Peters, Samuel Scovil, Harry Peters, Abiather Camp, Stephen Golding, William Foshay, Thomas Underhill, Thomas T. Hewlett, John Earle, John Humphrey, Charles Harrison, (of the Quorum,) and Peter Yeamans, John M'Alister, and David M'Donald, Justices of the Peace.

Nathaniel Hubbard Deveber, Esquire, High Sheriff.

Timothy R. Wetmore, Esquire, Keeper of the Rolls, and Clerk of the Peace and Inferior Court of Common Pleas.

Valentine H. Peters, Esquire, Register of Deeds and Wills.

Thomas Gilbert, John Earle, and Thomas T. Hewlett, Esquires, Coroners.

Valentine H. Peters, Esquire, and Honorable Harry Peters, Commissioners for taking Bail in the Supreme Court.

Honorable Harry Peters, Valentine H. Peters, Samuel Scovil, T. R. Wetmore, and Henry S. Peters, Esquires, Commissioners for taking Affidavits in the Supreme Court.

Samuel Scovil, Harry Peters, Stephen Golding, William Foshay, Thomas Underhill, Thomas T. Hewlett, John Earle, and John Humphrey, Esquires, Commissioners for Solemnizing Marriage.

Timothy R. Wetmore, Esquire, Issuer of Marriage Licenses.

Nathaniel Hubbard Deveber, Esquire, Licensed Auctioneer.

Rev. Samuel R. Clarke, Valentine H. Peters, Harry Peters, Samuel Scovil, Rev. Abraham Wood, Thomas T. Hewlett, Timothy R. Wetmore, and Nathaniel H. Deveber, Esquires, Trustees of the Grammar School.

KING'S COUNTY.

David B. Wetmore, George H. Hazen, Isaac Perry, and John T. Coffin, Esquires, Justices of the Inferior Court of Common Pleas.

David B. Wetmore, George H. Hazen, Isaac Perry, John T. Coffin, Thomas Ketchum, Rufus Rulofson, John Smith, James Britain, Gould Pickett, Henry A. Scovil, John C. Vail, Allyn C. Evason, William M'Leod, John Barbarie, Ebenezer Smith, Azor Hoyt, Isaac Haviland, (of the Quorum,) and Samuel Foster, Esqrs., Justices of the Peace.

and Clerk of the
and Wills.
Esqrs. Coroners.
y T. Partelow, and
ing Bail in the Su-
T. Partelow, and
aking Affidavits in
nd Stephen Penbo-
riage.

nd Samuel Scovil,
Pleas.
s, Abiather Camp,
hill, Thomas T.
ison, (of the Que-
David M'Donald,

iff.
olls, and Clerk of

and Wills.
ewlett, Esquires,
rry Peters, Com-

uel Scovil, T. R.
ioners for taking

William Foshay,
and John Hum-
riage.

Licenses:
uctioneer.
y Peters, Samuel
Timothy R. Wet-
of the Grammar

ry, and John T.
ommon Pleas.
John T. Coffin,
e Britain, Gould
vason, William
Isaac Haviland,
es of the Peace.

Walter Bates, Esquire, High Sheriff.

Ava Davidson, Esquire, Deputy Sheriff.

Edward Betts Smith, Esquire, Keeper of the Rolls, and Clerk of the Peace and Inferior Court of Common Pleas.

William Simpson, Esquire, Register of Deeds and Wills.

David B. Wetmore, George N. Arnold, William Frost, and John Haviland, Esquires, Coroners.

Walter Bates, and Edward G. N. Scovil, Esquires, Trustees of the Grammar School.

John Coffin, Elias Scovil, D. B. Wetmore, George H. Hazen, Isaac Perry, and John T. Coffin, Esquires, Commissioners for taking Bail in the Supreme Court.—John Coffin, Elias Scovil, William Simpson, and Edward B. Smith, Esquires, Commissioners for taking Affidavits in the same.

David B. Wetmore, William M'Leod, Henry A. Scovil, John C. Vail, Isaac Perry, and James Brittain, Esquires, Commissioners for Solemnizing Marriage.

E. B. Smith, Esquire, Issuer of Marriage Licenses.

Caleb Wetmore, Simon Baxter, John Sheck, William Frost, Joshua Gidney, Licensed Auctioneers.

COUNTY OF WESTMORLAND.

Samuel Gay, Rufus Smith, John Keillor, William Crane, Esquires, and the Honorable Amos E. Botsford, Justices of the Inferior Court of Common Pleas.

Samuel Gay, Rufus Smith, John Keillor, William Crane, Amos E. Botsford, James Easterbrooks, Edward Dixon, James Sayre, Philip Palmer, John Smith, Bill Chappell, Humphrey Gilbert, Marmaduke L. Backhouse, Harman R. Trueman, Lewis Trites, William Chapman, George Steeves, Peter M'Lellan, (of the Quorum,) Robt. Scott, William Wilson, John Chapman, William C. Smith, Daniel Hannington, John Trenholm, George Oulton, Joseph Avar, junior, Amasa Weldon, and George Pitfield, Esquires, Justices of the Peace.

William P. Sayre, Esquire, High Sheriff.

Honorable Edward B. Chandler, Keeper of the Rolls, and Clerk of the Peace and Inferior Court of Common Pleas.

John Edgett, and Andrew Weldon, Esquires, Coroners.

Marmaduke L. Backhouse, Esquire, Register of Deeds and Wills.

Samuel Gay, Rufus Smith, John Keillor, William Crane, Hon. A. E. Botsford, Hon. E. B. Chandler, James Stewart, Thomas S. Sayre, S. G. Morse, and Christopher Milner, junior, Esquires, Commissioners for taking Affidavits to be read in the Supreme Court; and the Justices of the Common Pleas, together with Lewis Trites, and Abel S. Gore, Esquires, Commissioners for taking Bail in the Supreme Court.

Hon. E. B. Chandler, Issuer of Marriage Licenses.

Rufus Smith, John Keillor, William Crane, William Hannington, William Chapman, Bill Chappell, Lewis Trites, and Robert Scott, Esquires, Commissioners for Solemnizing Marriage.

Thomas Trenholm, Andrew Weldon, junior, George Pitfield, and G. Woodworth, Esquires, Licensed Auctioneers.

COUNTY OF NORTHUMBERLAND.

Alexander Davidson, John Fraser, William Abrams, Esquires, and Hon. Joseph Cunard, Justices of the Inferior Court of Common Pleas.

Alexander Davidson, John Fraser, William Abrams, Hon. Joseph Cunard, John Clark, John T. Williston, William Joplin, Alexander Goodfellow, John Wright, Christopher Clark, Dudley Perley, John Nesmith, Donald M'Kay, Robert Doak, John Campbell, James Gilmour, J. Donald, S. Henderson, (*of the Quorum*), and Thomas C. Allan, Esquires, Justices of the Peace.

Richard Samuel Clark, Esquire, High Sheriff.

Thomas H. Peters, Esquire, Keeper of the Rolls, and Clerk of the Peace and Inferior Court of Common Pleas.

J. Wright, and J. M. Johnston, Esquires, Coroners.

J. A. Street, Esquire, Register of Deeds and Wills.

William Loch, John Nesmith, Alexander Davidson, Hon. Joseph Cunard, Robt. Doak, Christopher Clark, and John J. Donald, Esquires, Commissioners for taking Bail in the Supreme Court.

John Nesmith, Thomas H. Peters, J. A. Street, William End, William Carman, junr, George Kerr, C. A. Harding, Hon. Joseph Cunard, Robert Doak, Christopher Clark, and John J. Donald, Esquires, Commissioners for taking Affidavits in the Supreme Court.

William Abrams, Alexander Goodfellow, Donald M'Kay, Robert Doak, and John Campbell, Esquires, Commissioners for Solemnizing Marriage.

Thomas H. Peters, Esquire, Issuer of Marriage Licenses.

William Davidson, Richard Samuel Clarke, Patrick Henderson, J. Wright, John Bell, James Davidson, Thomas C. Allan, John M. Johnston, Patrick Brannen, C. Clarke, Phineas Williston, Henry C. D. Carman, W. Ledden, and A. Brown, Licensed Auctioneers.

COUNTY OF KENT.

John Wheaton, Samuel M'Kean, and George Pagan, Esquires, Justices of the Inferior Court of Common Pleas.

John Wheton, Samuel M'Kean, George Pagan, John Jardine, William Hunnington, John Bowser, (*of the Quorum*), and Thos. Powell, Esquires, Justices of the Peace.

Thomas Lanedowne, Esquire, High Sheriff.

John Wesley Weldon, Esquire, Keeper of the Rolls and Clerk of the Peace and Inferior Court of Common Pleas.

John Wheaton, Samuel M'Kean, George Pagan, John W. Weldon, and William Chandler, Esquires, Commissioners for taking Affidavits to be read in the Supreme Court;—and John Wheaton, Samuel M'Kean, and George Pagan, Esquires, Commissioners for taking Bail in the Supreme Court.

George Pagan, Esquire, Register of Deeds and Wills.

John W. Weldon, Esquire, Issuer of Marriage Licenses.

John Wheaton, John Jardine, William Hunnington, junior, and John Bowser, Esquires, Commissioners for Solemnizing Marriage.

Michael Samuel, George Pagan, David Gifford, and Ward M'Donald, Licensed Auctioneers.

ERLAND.

rams, Esquires, and
t of Common Pleas.
rams, Hon. Joseph
Joplin, Alexander
udley Perley, John
mpbell, James Gil-
) and Thomas C.

s, and Clerk of the

ners.
ills.
son, Hon. Joseph
Donald, Esquires,
rt.

William End, Wit-
Hon. Joseph Cun-
Donald, Esquires,
e Court.

id M'Kny, Robert
ers for Solemnizing

Licenses.
rick Henderson, J.
Allan, John M.
illiston, Henry C.
Auctioneers.

an, Esquires, Jus-

ohn Jardine, Wil-
and Thos. Powell,

olls and Clerk of

ohn W. Weldon,
taking Affidavits
aton, Samuel Mc
for taking Bail in

ills.
enses.
junior, and John
Marriage.
d Ward M'Don-

COUNTY OF GLOUCESTER.

Perry Dumaresq, Robt. Ferguson, John Montgomery, Dugald Stewart, and Joseph Read, Esquires, Justices of the Inferior Court of Common Pleas.

Perry Dumaresq, Robt. Ferguson, John Montgomery, Dugald Stewart, Joseph Read, John Miller, James Blackhall, Adam Ferguson, William Fleming, Benjamin Dawson, John Young, Harvey Adams, William Napier, Henry W. Baldwin, Charles Coughlan, P. J. N. Dumaresq, John Richey, John Doran, (of the Quorum,) and Robert Robertson, Esquires, Justices of the Peace.

William Carman, Esquire, High Sheriff.

William End, Esquire, Keeper of the Rolls, and Clerk of the Peace and Inferior Court of Common Pleas.

Hugh Munro, Esquire, Register of Deeds and Wills.

Thomas M. DeBlois, Esquire, County Treasurer.

William Stevens, Hugh Montgomery, and George Sevrit, Esquires, Coroners.

William End, Andrew Barbarie, Richard Carman, Chipman Botsford, Esquires, Commissioners for taking Affidavits in the Supreme Court.

Perry Dumaresq, Joseph Read, Benjamin Dawson, Dugald Stewart, Peter Stewart, and James Paul, Esquires, Commissioners for taking Bail and Affidavits in the Supreme Court.

Hugh Munro, Perry Dumaresq, Robert Ferguson, John Young, and James Blackhall, Esqrs., Commissioners for Solemnizing Marriage.

William End, Esquire, Issuer of Marriage Licenses.

William End, William Napier, and William Stevens, Esquires, Commissioners of the Grammar School.

Joseph Read, Henry W. Baldwin, and Francis Ferguson, Esquires, Commissioners of Sick and Disabled Seamen's Fund, Bathurst.

Thomas M. DeBlois, William Napier, and Joseph Read, Esquires, Commissioners of Beacons and Buoys for the Parish of Bathurst.

John Montgomery, Dugald Stewart, and Adam Ferguson, Esquires, ditto for the Port of Dalhousie.

Henry W. Baldwin, Donald M'Leod, and William Stevens, Licensed Auctioneers.

COUNTY OF CARLETON.

B. C. Beardsley, John Bedell, and Richard Ketchum, Esquires, Justices of the Inferior Court of Common Pleas.

B. C. Beardsley, John Bedell, Richard Ketchum, James Upham, James A. Maclauchlan, George Morehouse, Josiah Brown, John Diblee, Adam Sharp, Arthur B. Walsh, Francis Rice, (of the Quorum,) and Leonard R. Coombes, Esquires, Justices of the Peace.

John F. W. Winslow, Esquire, High Sheriff.

Mr. David Munro, Deputy Sheriff.

J. K. Smodes Wetmore, Esquire, Keeper of the Rolls, and Clerk of the Peace and Inferior Court of Common Pleas.

John Bedell, Esquire, Register of Deeds and Wills.

John Bedell, junior, Esquire, Coroner.

B. C. Beardsley, George W. Cleary, A. K. Smedes Wetmore, William H. Needham, Abraham N. Garden, and D. L. Dibles, Esquires, Commissioners for taking Affidavits in the Supreme Court.

Richard Ketchum, Esquire, Commissioner for taking Bail and Affidavits in the Supreme Court.

Richard Ketchum, George Morehouse, Jobiah Brown, and Arthur B. Walsh, Esquires, Commissioners for Solemnizing Marriage.

Richard English, and Jeremiah M. Connell, Licensed Auctioneers.

CITY AND COUNTY OF SAINT JOHN.

The Mayor and the Recorder, Justices of the Mayor's Court.

Henry Porter, George A. Lockhart, Thomas Harding, Gregory Van Horne, William Y. Theal, and George Bond, Esquires, Justices of the Peace and of the Quorum.

John Ward, William Scovil, James Peters, Thomas Millidge, Ralph M. Jarvis, Charles Simonds, G. C. Carman, Zalmon Wheeler, John Jordan, Allan Otty, George Anderson, James Moran, Hugh Johnston, Henry Gilbert, Robert W. Crookshank, senior, Noah Disbrow, senior, Robert Ellis, Robert Payne, Archibald Menzies, Robert Brown, James Hendricks, Benjamin L. Peters, Nehemiah Merritt, Stephen Wiggins, Ezekiel Barlow, Robert Rankin, Charles Ward, William H. Street, and George D. Robinson, Esquires, Justices of the Peace.

James White, Esquire, High Sheriff.

James Peters, junior, Esquire, Clerk of the Peace, &c.

James T. Hantord, Esquire, Coroner.

John C. Waterberry, Esquire, County Treasurer.

Charles Drury, Esquire, Register of Deeds and Wills.

Henry Swymmer, Esquire, Surrogate.

Benjamin L. Peters, Esquire, Commissioner for taking Bail in the Supreme Court.

William B. Kinnear, Neville Parker, James Peters, junior, Henry Swymmer, Francis A. Kinnear, Robert F. Hazen, William Wright, H. N. H. Lugin, John M. Robinson, M. H. Perley, Rob't L. Hazen, Richard Sands, junior, John Johnston, James William Boyd, George Wheeler, Judah H. Hartt, Charles Johnston, Duncan Robertson, N. W. Wallop, James W. Peters, John H. Gray, Robertson Bayard, W. J. Ritchie, and Charles Gallagher, Esquires, Commissioners for taking Affidavits in the Supreme Court.

Gehardus C. Carman, John Jordan, and James Moran, Esquires, Commissioners for Solemnizing Marriage.

Charles Drury, Esquire, Issuer of Marriage Licenses.

BOARD OF HEALTH.

John Robertson, Esquire, (*Chairman*), William H. Street, Benjamin Stanton, Daniel Ansley, Thomas Harding, Gregory Vanhorne, George Bond, Thomas Barlow, John R. Partelow, (*Secretary*), Henry Gilbert, Allan Otty, Robert Rankin, Robert Payne, William B. Kinnear, B. L. Peters, William Olive, Rev. Dr. Gray, Rev. Robert Wilson, Rev. James Dunphy, Charles Ward, Isaac Woodward, James Hendricks, M. H. Perley, Charles Simonds, Robert F. Hazen, Henry Porter, George A. Lockhart, and William Y. Theal.

Wetmore, Wil-
 ibblee, Esquires,
 Court.
 g. Bail and Affida-

own, and Arthur
 Marriage.
 used Auctioneers.

NT JOHN.

or's Court.
 ing, Gregory Van
 es, Justices of the

s Millidge, Ralph
 n Wheeler, John
 , Hugh Johnston,
 n Disbrow, senior,
 ert Brown, James
 Stephen Wiggins,
 William H. Street,
 Peace.

, &c.

aking Bail in the

rt, junior, Henry
 William Wright,
 Rob't L. Hazen,
 am Boyd, George
 n Robertson, N.
 tson Bayard, W.
 issioners for ta-

loran, Esquires,

. Street, Benja-
 gory Vanhorne,
 ecretary,) Hen-
 e, William B.
 y, Rev. Robert
 oodward, James
 Hazen, Henry

*Terms of the Sittings of the Court of General Ses-
 sions and Inferior Court of Common Pleas.*

SAINT JOHN—3d Tuesday in March, and 1st Tuesday in June, Sep-
 tember, and December.

YORK—2d Tuesday in January and June—Additional Terms of the
 Common Pleas—3d Tuesday in March, and 2d Tuesday in October.

WESTMORLAND—3d Tuesday in June, and 2d Tuesday in November.
 Additional Terms of the Common Pleas—1st Tuesday in April,
 and 2d Tuesday in September.

CHARLOTTE—2d Tuesday in April, and 3d Tuesday in Sept.—Addi-
 tional Terms of the Common Pleas—2d Tuesday in July and Dec.

KING'S COUNTY—1st Tuesday in March and July. Additional Terms
 of the Common Pleas—1st Tuesday in May and November.

QUEEN'S COUNTY—4th Tuesday in January and June. Additional
 Terms of the Common Pleas—4th Tuesday in April and October.

SUNBURY—3d Tuesday in January and June. Additional Terms of
 the Common Pleas—4th Tuesday in March, and 3d Tuesday in
 October.

NORTHUMBERLAND—1st Tuesday in March and August. Addi-
 tional Terms of the Common Pleas—1st Tuesday in June and Nov.

KENT—2d Tuesday in January and 4th Tuesday in June. Additional
 Terms of the Common Pleas—1st Tuesday in April and September.

GLOUCESTER—2d Tuesday in January and last Tuesday in July. Ad-
 ditional Terms of the Common Pleas—1st Tuesday in April and
 last Tuesday in October.

CARLETON—1st Tuesday in January and June. Additional Terms of
 the Common Pleas—1st Tuesday in March and October.

THE COURT OF CHANCERY sits at Fredericton on
 the Mondays after the second Tuesdays in Feb'y, June, and Oct.

**WINTER ARRANGEMENT OF THE MAILS,
 AT SAINT JOHN, N. B.**

ARRIVALS.

Tuesday ,—	From Fredericton,	at 12 M.
	Nova-Scotia, via Digby,	at 5 P. M.
Wednesday ,	St. Andrews and the U. States,	at 12 M.
Thursday ,	Fredericton and Canada,	at 12 M.
Saturday ,	Halifax, Miramichi, &c.	at 10 A. M.
"	" St. Andrews and the U. States,	at 12 M.

DEPARTURES.

Monday ,—	For Fredericton,	at 11 A. M.
Wednesday ,	Halifax, Miramichi, &c.	at 1 P. M.
"	" Saint Andrews and the U. States,	at 6 P. M.
Friday ,	Fredericton and Canada,	at 11 A. M.
Saturday ,	Nova-Scotia, via Digby,	at 7 P. M.
"	" Saint Andrews and the U. States,	at 6 P. M.

STAFF OF THE ARMY,
SERVING IN THE PROVINCE OF NEW-BRUNSWICK,
UNDER THE COMMAND OF
Major-General Sir ARCHIBALD CAMPBELL, Baronet, G. C. B.

Captain J. Campbell, (38th Regiment,) Aid-de-Camp.
Captains the Hon. Augustus Almeric Spencer, (43d L. I.) Private
Secretary.
Town-Major J. Gallagher, (H. P. 98th Regiment.)

GARRISONS.

Fredericton—Lient. Col. Booth, K. H. (42d L. I.) Commandant.
Saint John—Major W. H. Slade, (R. E.) Commandant.
Saint Andrews—Lieutenant Pearson, (43d L. I.) Commandant.

CHAPLAINS.

Fredericton—Venerable Archdeacon Coater, M. A.
Saint John—Reverend Benjamin G. Gray, D. D.
Saint Andrews—Reverend Jerome Alley, D. D.

COMMISSARIAT DEPARTMENT.

Wm. Robinson, Esquire, Assistant Commissary General.
Geo. Swinney, Esquire, Deputy Assistant Commissary General.
Oliver Goldsmith, Esq. Deputy Assistant Commissary General.

ORDNANCE DEPARTMENT.

SAINT JOHN.

Frederick C. Frith, Esquire, Deputy Ordnance Store Keeper and
Barrack Master.
Lieutenant Samuel Huyghue, 1st Clerk.
Mr. Robert Pickthall, 2d Clerk.
Mr. William Bond, Storehouseman and Acting Barrack Sergeant.
Mr. George Thomas, Armourer.
Mr. James Emison, Office Keeper.

FREDERICTON.

John E. Woolford, Esquire, Barrack Master.
Mr. William Fairbairn, Barrack Sergeant.

ROYAL ENGINEER DEPARTMENT.

Major Slade, Commanding.
Mr. Lionel Anderson, Clerk.
Mr. Henry Hennigar, Overseer of Works.

BOARD OF RESPECTIVE OFFICERS.

Major Slade, Royal Engineers.
Captain Dalton, Royal Artillery.
Deputy Ordnance Store Keeper Frith.

OFFICERS OF CORPS SERVING IN THE PROVINCE.

ROYAL ARTILLERY.

Captain Dalton, Commanding.
Lieutenant Marley.

45D LIGHT INFANTRY—AT FREDERICTON.

Lieutenant Colonel Booth, K. H., Commanding.

Captain Wright.	Ensign Lord Hill.
Captain Tryon.	Ensign Herries.
The Hon. Captain Spencer.	Ensign L. Cole.
Lieutenant Thomas.	Paymaster, G. Hood.
Lieutenant Meade.	Surgeon, J. Miller.
Lieutenant and Adjutant Priestly.	Quarter Master, J. Rand.
Lieutenant the Hon. C. R. West.	

AT SAINT JOHN.

Captain Fraser, Commanding.

Captain Egerton.	Lieutenant Oxendon.
Captain Bell.	Ensign Coote.
Lieut. Saunders, acting Adjutant.	Ensign Skipwith.
Lieutenant Leringe.	Assistant Surgeon Hamilton.

AT SAINT ANDREWS.

Lieutenant Pearson, Commanding.
Staff Assistant Surgeon Robertson.

STAFF OF THE MILITIA IN NEW-BRUNSWICK.

HIS EXCELLENCY

Major-General Sir ARCHIBALD CAMPBELL, Baronet, G. C. B.,
Commander-in-Chief, &c. &c.

The Honorable Lieutenant-Colonel George Shore, Adjutant General.
Major John Gallagher, Quarter-Master General.
Lemuel A. Wilmot, Esquire, Judge Advocate General.
The Honorable Major G. F. Street, Provincial Aid-de-Camp.

THE ROYAL FAMILY OF GREAT-BRITAIN.

KING WILLIAM IV. born August 1, 1765; married July 11, 1818,
to ADELAIDE AMELIA LOUISA TERESA CAROLINE, sister of the
reigning Duke of Saxe Meiningen, born August 13, 1792.

Royal Princes and Princesses.—Augusta Sophia, born Nov. 8,
1768; Elizabeth, born May 22, 1770—married April 7, 1818, to Fre-
derick Joseph Louis, Landgrave of Heese Homburgh, who died April
2, 1829, in his sixty-first year; Ernest Augustus, Duke of Cumberland,

born June 5, 1771—married May 29, 1815, to Fredrica Sophia Caroline, daughter of the Duke of Mecklinberg Strelitz, and widow of Frederick William, Prince of Salms Braunsfels, born March 2, 1778; *Issue*, George Frederick, born May 27, 1819; Augustus Frederick, Duke of Sussex, born January 27, 1773; Adolphus Frederick, Duke of Cambridge, born February 24, 1774—married May 7, 1818, to Augusta Wilhelmina Louisa, neice of the Landgrave of Hesse—born July 25, 1797; *Issue*, George William, March 26, 1819; Augusta Caroline, July 19, 1822; Mary, Duchess of Gloucester, born April 25, 1776; Sophia, born November 3, 1777.

Present order of Succession to the Throne.—Alexandrina Victoria, issue of the late Duke of Kent, born May 24, 1819.

HIS MAJESTY'S MINISTERS.—First Lord of the Treasury—Viscount Melbourne; Chancellor of the Exchequer—The Right Hon. T. Spring Rice; President of the Council—Marquis of Lansdowne; Secretaries of State—Home Department, Lord John Russell; Foreign Affairs, Viscount Palmerston; the Colonies, Lord Glenelg; First Lord of the Admiralty—Earl of Minto; President of the India Board—Sir John Cam Hobhouse, Bart.; President of the Board of Trade—Right Hon. Charles Poulett Thompson; First Commissioner of Woods and Forests—Lord Duncannon; Secretary at War—Lord Howick; Joint Secretaries of the Treasury—Francis Baring, & E. J. Stanley, Esqrs. Attorney-General—Sir John Campbell; Solicitor General—Robert Monsley Rolfe, Esquire; Judge Advocate General—Right Hon. Robert Cutler Fergusson; Paymaster General—Sir Henry Parnell; Postmaster General—Earl of Litchfield; Lord Lieutenant of Ireland—Earl of Mulgrave; Lord Chancellor of Ireland—Lord Plunkett; Secretary for Ireland—Lord Morpeth.

MISCELLANEOUS INFORMATION.

Population of the World.—A thousand millions have been mentioned, apparently for no other reason than the convenience of a round number. Malte Brun reduces the amount to 650 millions. We think his enumeration for Asia, Africa, and America still rather high, and submit the following estimate as the result of our enquiries:—Europe, 185 millions, Asia, with Australia and Polynesia, 270 millions, Africa, 55 millions, and America, 40 millions,—total, 550 millions. Hassel, in 1819, estimated the population of Europe to be 180,702,000; but Balbi, in 1828, raised it to 226,283,000. De Schlieben put it at 188,391,174, of whom 172,432,000 were Christians, and the armed force of all its countries at 2,500,000. Dr. Malthus stated the population of China, from his authorities, at 390 millions. The Chinese gave this account to Lord Macartney. Malte Brun, in his view of the subject, reduces it to 150 millions. Abbe Grocier reckoned it at

ca Sophia Caro-
widow of Fre-
March 2, 1778;
ustus Frederick,
Frederick, Duke
ny 7, 1818, to
of Hesse—born
1819; Augusta
r, born April 25,

alexandrina Vic-
19.

f the Treasury—
The Right Hon.
of Lansdowne;
Russell; Foreign
Belg; First Lord
India Board—Sir
of Trade—Right
of Woods and
Howick; Joint
Stanley, Esqrs.
General—Robert
Right Hon. Ro-
Parnell; Post-
of Ireland—Earl
kett; Secretary

ION.

illions have
son than the
reduces the
eneration for
and submit
nquiries :—
Polynesia,
rica, 40 mil-
timated the
t Balbi, in
en put it at
stians, and
Dr. Mal-
authorities,
nt to Lord
subject, re-
sioned it at

157,901,755. The Pere Amiot at 200 millions. Tim-
kowski, one of a late Russian mission, from some account
he saw in 1790, at 142,926,734. An official work publish-
ed in China in 1823, entitled Tsin-shin, makes the a-
mount 146,290,163, which is adopted by Sadler in his
Laws of Population. But an Anglo-Chinese Kalendar,
published recently in China (1832), states that, accord-
ing to a census taken in 1813, under the authority of the
Emperor Keaking, the official returns carried the popu-
lation of China to 362,447,183 souls. M. Gutzlaff, the
German Protestant Missionary, has adopted this as the
most certain account of the real population of this surpris-
ingly extensive empire.

Estimate according to Religion.

Pagan Nations,	657,000,000
Mohammedan Nations,	140,000,000
Christian Nations,	200,000,000

*Estimate in reference to the population subject to Christian Go-
vernments.*

PROTESTANT STATES.

Great Britain,	150,000,000
United States of America,	13,000,000
Russia, Sweden, &c.	29,000,000—192,000,000
Greek Church, Russia, &c.	60,000,000
Roman Catholic States,	135,000,000

	<u>387,000,000</u>
<i>Mohammedan States,</i>	90,000,000

HEATHEN STATES.

Chinese Empire, Japan, &c.	270,000,000
Other Heathens,	290,000,000—470,000,000

Total, 947,000,000

Area of the Globe.—The extent of the four great divi-
sions of the world is as follows, in square English miles,
—Europe, with its isles; 3,432,000; Africa, with Mada-
gascar, 11,420,000; Asia, continental, 16,890,000; the
isles, including New Holland and Polynesia, 4,200,000;
South America, 6,420,000; North America, 8,100,000;
the islands, 160,000; and Greenland, (supposed) 620,000,
total square miles, 51,242,000. England and Wales con-
tain 57,960 square miles, Scotland 30,500, and Ireland
30,000; in all 118,460 square miles. The United States
contain about 2 millions square miles, or nearly one-twen-
ty-fifth part of all the land on the globe.

Our Globe contains about 146 millions of square miles of water, and 50 millions of land. In America, are about 16 millions of square acres of land, in Asia 16, in Africa 11, in Europe 3, in Australia 3½ millions.

The number of languages spoken upon the globe is about 3000.

The number of births, by estimation, is, to the number of inhabitants, as 1 to 29½, and the number of deaths as 1 to 33.

In Europe the number of male children born is to that of females as 21 to 20, or 26 to 25. At the age of fifteen years, the number of males and females is nearly equal. Over that age the number of females is greatest.

In a country where there are 10,000 births, the whole population is computed at 295,000; children under fifteen years of age, 93,030; over fifteen, 202,000; married couples, 23,000; widows, 5000; widowers, 4000.

It is also computed that nearly a quarter of the children born, die the first year, and nearly a third within the two first years.

The number of births upon the earth in a year is about 34 millions; in a day, 65,000; in an hour, 2,703; in a minute, 49.

In a population of one million, 502,000 will live to be twenty years of age; 334,000 to forty-five years; 213,000 to 60; 177,000 to seventy; 34,000 to eighty; 2,800 to ninety; 207 to one hundred; 16 to 195; 2 to one hundred and eight; 1 to one hundred and nine; and none to one hundred and ten years.

LIFE.—Of one hundred persons born at the same time, at the end of 5 years there remained 64—at the end of 16 years, 46—at the end of 26 years, 26—at the end of 46 years, 10—at the end of 56 years, 6—at the end of 66 years, 3—at the end of 76 years, 1.—*N. Y. Sun.*

STATISTICS.

Great-Britain.—National Debt, \$3,490,896,767—Annual Revenue, \$223,849,600—Population, without Colonies, 25,000,000—Army in peace, 90,519—in war, 378,370—Navy in peace, 610 ships—in war, 1056.

Russia.—National Debt, \$200,000,000—Annual revenue, \$52,000,000—Population in Europe and Asia, 46,000,000—Army in peace, 600,000—in war, 1,000,000—Navy, 150.

France.—National debt, \$480,000,000—Annual revenue, \$157,760,000—Population, 35,000,000—Army in peace, 231,000—in war, 320,000—Navy in peace, 329 ships—in war, 354.

Austria.—National debt, \$200,000,000—Annual revenue, \$53,000,000—Population, 34,500,000—Army in peace, 271,404—in war, 750,504—Navy, 72 ships.

Prussia.—National debt, \$114,140,440—Annual revenue, \$30,477,600—Army in peace, 165,000—in war, 524,429—ships 20.

Turkey.—National debt, \$36,000,000—Annual revenue, \$11,200,000—Population, (Europe and Asia,) 22,000,000—Army in peace, 80,000—in war, 200,000—Navy, in peace, 80 ships—in war, 160.

The Planets.—It is a universal fact, that while none of the planets are perfect spheres, so none of their orbits are perfect circles. Each planet revolves around the Sun in an ellipse, which is more or less eccentric, having the Sun, not in the centre of the ellipse, but in one of its foci. The eccentricity of an orbit is the distance from the centre to either of the foci, and is equal to *half* the difference between the two diameters. In every revolution of a planet, therefore, it is once in its aphelion, and once in its perihelion. In the former case, it is as much farther from the Sun than it is in the latter, as the *longer* diameter of the orbit exceeds the *less*, which excess is always equal to *twice* the eccentricity.

THE SUN.—The Sun is by far the largest of the heavenly bodies, whose dimensions we have been able to estimate. Its diameter is something more than 884 thousand miles; and, consequently, it contains a mass of matter equal to *fourteen hundred thousand globes* of the size of the earth. Of a body, so vast in its dimensions, the human mind, with all its efforts, can form no adequate conception. The whole distance between the Earth and the Moon would not be sufficient to embrace one-third of its diameter. Were the Sun a hollow sphere, with numerous openings to admit the light from above, and were a sun, moon, planets and stars to be represented on the concave surface, and a globe as large as the earth to be at the centre, there would be present to the view of a spectator on the Earth's surface, a universe as splendid as that, which now appears to the uneducated eye—a universe as large and extensive as the whole creation

seemed to be in the infancy of astronomy. The next thing which fills the mind with wonder, is the *distance* at which so great a body must be placed, to occupy, apparently so small a space in the firmament. The Sun's mean distance from the Earth, is eleven thousand nine hundred and ninety-two times the Earth's diameter, or nearly ninety-five millions of miles. We may derive some faint conception of such a distance, by considering that the swiftest steam-boats that ply our waters, at the rate of 200 miles a day, would not traverse it in *thirteen hundred years*; and, that a cannon-ball, flying night and day, at the rate of 16 mile a minute, would not reach it in *eleven years*. [From numerous experiments, made at the Imperial Polytechnic and Military Schools under Bonaparte, the mean velocity of a musket ball is 1600 feet in a second; that of a cannon-ball 1400 feet in a second; which is about *twice* the velocity erroneously given in school books.]

The Earth.—The Earth, like all the other planets, moves in its elliptical orbit with a velocity which is varying every instant, being most rapid in its perihelion, (when the Sun, as we say, is in perigee,) and slowest in its aphelion, (when the Sun, as we say, is in apogee.)—It is in its perihelion, or Sun in perigee, about the 1st of January, and in its aphelion, or Sun in apogee, about the 1st of July. Thus we are above 3 millions of miles nearer the Sun in mid-winter than in mid-summer. The reason why we have not, as might be expected, the hottest weather when the Earth is nearest the Sun, is, that the Sun, at that time, having retreated to the southern tropic, (the Earth being in the ascending part of her orbit,) shines so obliquely on our northern hemisphere, that its rays have scarcely half the force of the Summer sun; and continuing but a short time above our horizon, more cold is accumulated by night than is dissipated by day.

The constant variation of the Earth's orbit motion, is occasioned by two forces, one tending to the centre of the Sun, and the other in the direction of a tangent to its orbit, arising from the primitive impulse given at the time when it was launched into space. The former is called its *centripetal*, the latter, its *centrifugal* force. Should the centrifugal force cease, the Earth would fall to the Sun by its gravity alone in 64 days, 13 hours, 38m. 55s.; and, were the Sun not to attract it, it would fly off from its orbit in a straight line, into interminable space. When a planet is in its aphelion, the point of its orbit which is

omy. The next is the *distance* at to occupy, apparent. The Sun's en thousand nine th's diameter, or We may derive e, by considering ur waters, at the erse it in *thirteen* flying night and ould not reach it riments, made at Schools under et ball is 1600 feet feet in a second; eously given in

the other planets, ty which is vary- n its perihelion,) and slowest in is in apogee.)— about the 1st of n apogee, about millions of miles l-summer. The xpected, the hot- the Sun, is, that to the southern g part of her or- hemisphere, that e Summer sun; r horizon, more pated by day.

orbit motion, is the centre of the angent to its or- iven at the time former is called force. Should ould fall to the urs, 58m. 55s.; ould fly off from e space. When s orbit which is

farthest from the Sun, his attraction overcomes its velocity, and brings it towards him with so accelerated a motion, that it at last overcomes the Sun's attraction, and shoots past him: then, gradually again decreasing in velocity, it arrives at the aphelion where the Sun's attraction again prevails. This is the universal law of planetary motion. However large or small, however near or remote, the planets may be, their motion is always such that imaginary lines joining their centres to the Sun, pass over equal areas in equal times: and this is true not only with respect to the areas described every hour by the *same* planet, but the agreement holds, with rigid exactness, between the areas described in the same time by *all* the planets and comets, belonging to the solar system.—The form of the Earth's orbit is such, that its longer axis or diameter is about the one-sixtieth part longer than its shorter axis or diameter; consequently, the foci of the orbit are above $1\frac{1}{2}$ million of miles from its centre. [In aphelion, the Earth is distant from the Sun 96,477,230.2 miles; in perihelion, 93,286,551.4 miles; the mean distance being 94,881,890.8; and the eccentricity of its orbit, 1,595,339.4:—taking the Earth's mean diameter at 7912 miles, and the Sun's horizontal parallax at 9.6".] Now as the Sun remains fixed in the lower focus of the Earth's orbit, it is easy to perceive that a line, passing centrally through the Sun at right angles with the transverse or longer axis of the orbit, will divide it into two unequal segments: precisely thus it is divided by the equinoctial.—That portion of the Earth's orbit which lies *above* the Sun, or *north* of the equinoctial, contains about 134° ; while the portion which lies *below* the Sun, or *south* of the equinoctial contains only 176° . This fact shows why the Sun continues about 8 days longer on the north side of the equator in summer than it does on the south side in winter.

Important Discovery.—The Baltimore Athenæum says that some very remarkable lectures were lately delivered by Mr. Biot, at the College de France.—He has proved, that, by polarized rays it is possible to ascertain the chemical action which takes place between bodies held in solution in various liquids; an action which has not yet been discovered by less delicate means. The discovery, it is thought, will lead to the most important results.

Equalizing the Blood in the Human System.—We see that a patent has been taken out at Washington for an

apparatus to effect the above important purpose. The limb affected, or the whole body, is to be enclosed in a tube or vessel rendered air tight by India rubber, and the air is to be then extracted by means of an air pump, so as to take off atmospheric pressure from the part enclosed, and thereby cause an influx of blood. Heat is at the same time to be applied, to propitiate the circulation.

Bleeding to death.—Where an artery of considerable size is cut, it is in general necessary to tie it up, and in most cases if a surgeon be not at hand, the person dies in a short time. The following simple plan for checking the hæmorrhage, until surgical assistance can be had, may prove useful. Pass a strong cord, string or handkerchief around a limb, and above the point of injury; tie it tight, so that it will not slip, and insert a stick of any kind between it and the limb; by twisting the stick around (which is thus formed into a kind of lever) the cord or handkerchief may be made so tense around the limb, as to stop the circulation of the blood, which may be thus retained for several hours, without injury to the individual.

We know diseases of stoppings and suffocations, says Bacon, are the most dangerous in the body; and it is not much otherwise in the mind: you may take sarza to open the liver, steel to open the spleen, flower of sulphur for the lungs, castoreum for the brain; but no receipt openeth the heart but a true friend, to whom you may impart griefs, joys, fears, hopes, suspicions, counsels, and whatsoever lieth upon the heart to oppress it, in a kind of civil shrift or confession.—Where peace is, there God is, or dwells.

IMPORTANT TO FARMERS.—*Beet Sugar.*—As the manufacture of Sugar from Beets, may ere long be undertaken by some of our Agriculturists, the following article from an American paper, may be of interest :—

It appears that a Mr. Lecerf, of Ournaing, in the arrondissement of Valenciennes, has for sometime made sugar of most excellent quality, and that the apartments used as his factory are only two in number, one of which is 17 feet, the other 7 feet square. The machinery in the first apartment, consists of a wooden rasp turned by a crank, a hand-press of the same material, three small iron kettles, containing 25 to 30 gallons each, and three filterers of the same capacity. In the second apartment are two copper kettles, an evaporator and chrisalizer, holding 20 gallons.

purpose. The
be enclosed in a
rubber, and the
an air pump, so
the part enclod.
Heat is at
the circulation.
of considerable
ie it up, and in
the person dies
plan for check-
nce can be had,
ing or handker-
t of injury; tie
t a stick of any
isting the stick
nd of lever) the
nse around the
ood, which may
ut injury to the

ffocations, says
y; and it is not
e sarza to open
of sulphur for
o receipt open-
ou may impart
sels, and what-
h a kind of civil
here God is, or

—As the man-
be undertaken
ng article from

g, in the arron-
ne made sugar
tments used as
of which is 17
ery in the first
ed by a crank,
all iron kettles,
filterers of the
re two copper
ling 20 gallons

each, and moulds ranged around for the reception of the sugar. The price of the whole apparatus does not exceed \$125. The quantity of sugar made daily is 110 pounds. It thus appears that every farmer may make his own sugar, but as every farmer may not wish to incur even this expense, it is suggested that companies be formed in towns and villages who shall purchase the roots from the farmers. Speaking of the nature of the soils most adapted to the culture of this vegetable, the writer of the article referred to, says that those which are sandy and formed by alluvial deposits are the best, although a portion of almost every farm might be found sufficiently suitable to justify the cultivation of the root. To give an idea of the profit to be derived from this manufacture, it is estimated that an acre will produce 1000 bushels of beet—1600 have been raised on that space—each bushel weighing 60 pounds. Numerous experiments show that the root yields seven per cent of sugar, three per cent of molasses, and twenty-five per cent of cake. Calling the sugar worth 7 cents per pound, the molasses 3 cents, which is below the market price, and the cake as much as the beet, which is the fact, the account of the product of an acre, 60,000 pounds will stand thus :

4200 pounds sugar at 7 cents,	\$294,00
1900 pounds molasses at 4 cents,	72,00
15,000 pounds cake at 4 mills,	60,00
	<hr/>
	\$408,00
Expense of cultivating the root and ex- tracting the sugar,	103,00
	<hr/>
Nett profit,	\$300,00

The estimates here given of cost are said to be very liberal, probably double the real amount; but as the expense of fuel used in the evaporation will be the greatest item, each farmer can calculate for himself. From the above data, it would certainly seem that there are few crops indeed from which a greater profit can be derived than the beet. The experiment is well worthy of trial, and if successful, must be, in a climate like ours, a source of great wealth.—*Baltimore American.*

BRIEF HINTS FOR AUTUMN WORK.

Furrow drains should be cut by passing the plough three or four times through the same furrow, and they should be made through all low parts of the field. They should be

well cleared of loose earth by means of a shovel or hoe, so as to admit the surface water in wet seasons to pass freely off.

Corn should always be *cut up*, that is cut off near the surface of the ground, and not *topped*, or cut off above the ears. The former is more expeditious, it saves twice as much fodder, and is attended with a better crop of corn, as it is always diminished considerably by topping. This has been proved by repeated experiments, where the crop was *measured*.

Seed corn should always be selected in autumn—take such for this purpose as have the greatest number of ears to the stalk.

Grain fed to hogs should always, if possible, be first ground to meal.

Considerable advantage is derived from feeding *cooked* food, (steamed or boiled) to hogs, and it should always be practiced when the number is sufficient to warrant the erection of proper apparatus for it.

Cooked food for fattening cattle is of little advantage, and commonly not worth the trouble.

Advantage is generally derived from using *mixed* food for domestic animals.

Straw may always be of great use to the farmer in many ways, and is well worth preserving. The following method of securing it is given by a correspondent: 'Previous to threshing I go to a hay stack, and twist a quantity of bands from six to ten feet long, which are placed at the barn door, and when the straw is raked to the door, two men take a hand and stretch it over the bundle of straw, and then run each a hand under it, and turn it over endwise, when one of them fastens the band, and the other prepares another band. In this manner, two men will bind as fast as the swiftest machine will thresh, and the straw is stacked as securely as wheat, and in one fourth of the time required when not bound.' When wanted, it may be afterwards removed with far less trouble than when stacked without binding.

Strawberries may be transplanted with advantage in the early part of autumn.

Fruit trees may be removed and transplanted after the first of October. Most farmers who transplant fruit trees suffer a great loss by not doing the work well. The principal care needed is, first, to dig the holes large, say six feet across, and fifteen or eighteen inches deep; secondly, to preserve, carefully, the roots, as entire and uninjured

shovel or hoe,
seasons to pass

ut off near the
ut off above the
saves twice as
crop of corn,
opping. This
where the crop

utumn—take
umber of ears

sible, be first

eeding cooked
ould always
o warrant the

e advantage,

g mixed food

armer in ma-

he following

udent : ' Pro-

vist a quanti-

are placed at

to the door,

e bundle of

l turn it over

and the oth-

two men will

esh, and the

one fourth

n wanted, it

le than when

antage in the

ed after the

r fruit trees

The prin-

ge, say six

; secondly,

d uninjured

as possible, and not to suffer them to become dry out of the ground ; and thirdly to fill the hole with finely pulverized, rich earth, (not manure) shaking it in, in small quantities, and packing it closely but gently along the roots, so as to leave them in their natural position in the soil. The whole expenses of this would not be more than half the price of the tree, and in five years it would be three times the size which it would be if transplanted by the common way of digging small holes, and doing the work hastily and imperfectly.

Deep ploughing prevents injury from *drowth*, by allowing the roots to strike deeply, while if they only extended on the surface, the plants would perish from a want of moisture.

Deep ploughing prevents drowning of plants, because a heavy rain, by sinking in a deep soil, and diffusing itself through it, does not so much affect it ; while a shallow one would be surcharged and flooded.

But deep ploughing may materially injure land, if a barren subsoil is thrown up and mixed with the more fertile soil at the surface ; when therefore a shallow soil is to be deepened, it must be accompanied with a due application of manure.—*Gen. Farmer.*

EARLY SORT OF CORN.—This sort seems to be but lately introduced into New England. " It has very small stalks, but bears sound ears, and gives a good crop.— Those who have raised this kind think they can raise as many or more bushels on an acre as of the larger seed." This kind of corn is generally two or three weeks earlier than the common kind: this fact has been ascertained by experiments, many having raised both kinds in adjoining fields, and on the same kind of soils.

The advantages accruing from this early seed corn are many and well described by a practical farmer, as follows — " The ears sit low on the stalk, grow to a good size, and the grain is heavy. I think it is as valuable for use as any other kind of this grain ; and from the fact that it will bear planting so thick, I believe that I can secure a larger product than from any other that I have ever tried. But the circumstance which gives it its chief excellence, in my estimation, arises from the fact that I can gather my corn in season for the sowing of wheat or rye. In the most unfavorable seasons, wheat or rye may be sown in September, and in very favorable seasons early in that month."

At a late meeting of the London Horticultural Society, Mr. Knight, the President, described the culture of a new variety of potato, whereby 1000 bushels (each bushel 60 lbs.) may be obtained as the average produce of an acre. He also stated that he had found a minute quantity of the flower of sulphur very efficacious in destroying the red spider on peach and nectarine trees, and on melon vines.

Planting Forest Trees.—The best time for planting acorns and walnuts, as well as peaches, cherries and other stone fruits, is in the fall of the year, as soon as they are ripe. If they are kept long after becoming thoroughly ripe, they are apt to lose their vegetative principle.

Remedy for Vermin in Sheep.—Mr. Coke's recipe for dressing all his flocks previous to winter, was as follows: two pounds of tobacco, two pounds and a half of soft soap, one pound of white mercury in powder, boil in eight gallons of water one hour; part the wool once down each shoulder and the breast, and twice along each side; into which pour it; this quantity is enough for forty sheep.—*Young's Annals.*

Dairy Secret.—Have ready two pans in boiling water; and on the new milk's coming to the dairy, take the hot pans out of the water, put the milk in one of them, and cover it with the other. This will occasion great augmentation in the thickness and quality of the cream.

Remedies against Rats and Mice.—Take a spoonful of flour, mixed with some scrapings of old cheese, and seeds of hemlock, (cicuta,) made as fine as possible. Set it where the mice haunt. If it be set in a house, let it not be in the same apartment with any thing which is food for man. This mixture, according to Deane's New England Farmer, will destroy all the mice which have access to it; and the same poison will destroy rats.

Hints to House-keepers.—Boiling codfish in hard water makes fish firmer. Soap should be cut up in pieces that it may be kept hard. A little wet whiting will get ink out of boards. A little white wax will clear starch nicely. Milk will take ink out of prints.

To boil Peas or Beans.—That dry peas or beans may readily boil soft in hard water, throw a small quantity of sub-carbonate of soda, (common soda of the shops,) into the vessel in which the dry seeds are put to boil.

Rice Custards.—Put a blade of mace and a quartered nutmeg into a quart of cream; boil and strain it, and add

ultural Society,
ulture of a new
each bushel 60
uce of an acre.
quantity of the
roying the red
n melon vines.

e for planting
rries and other
on as they are
ng thoroughly
inciple.

ke's recipe for
ns as follows:
lf of soft soap,
l in eight gal-
ce down each
ch side; into
rty sheep.—

oiling water;
take the hot
of them, and
n great aug-
e cream.

a spoonful of
se, and seeds
sible. Set it
se, let it not
hich is food
eane's New
which have
rats.

n hard water
n pieces that
will get ink
starch nice-

beans may
quantity of
shops,) into
oil.

quartered
it, and add

68

to it some little boiled rice and a little brandy. Sweeten it to taste, stir it till it thickens, and serve it up in cups or in a dish. It may be used either hot or cold.

To make hard Water soft.—Take the hard water from the well, and into one bucket put one ounce of the carbonate of soda, which dissolves immediately when the water is warmed, and it becomes at once as soft and harmless as the purest rain water.

Recipe for the Croup.—Sponges or napkins dipped in the hottest water, wrung out, and applied to the throat, are said to be excellent in the croup.

Recipe—Linseed, sugar, liquorice, and lemon juice, added to a little rum, are said to be an excellent recipe for a cough.

Cure for a Burn.—Scrape the inside of a potatoe; mix oil and turpentine so as to make a poultice of the mixture; apply it to the burn immediately, and it will extract the heat.

China Ware—In China, it is said that the prepared clay for the manufacture of porcelain ware is buried in deep pits, and left to ripen there for half a century; by which means their porcelain attains that semi-pelucid and pearly delicacy which has never been equalled in this country or in England.

Transparent Cement for uniting broken glass.—It is said that Isinglass, boiled in spirits of wine, makes a fine transparent cement, which will unite broken glass, rendering the fracture almost imperceptible and very strong.

Early Frugality.—In early childhood you lay the foundation of poverty or riches, in the habits you give your children. Teach them to save every thing;—not for their own use, for that would make them selfish—but for some use. Teach them to share every thing with their playmates; but never allow them to destroy any thing. I once visited a family where the most exact economy was observed, yet nothing was mean or uncomfortable. It is the character of true economy to be as comfortable with little as others are with much. In this family, when the father brought a package, the older children would of their own accord put away the paper and twine neatly, instead of throwing them in the fire, or tearing them to pieces. If the little ones wanted a piece of twine to spin a top, there it was in readiness; and when they threw it upon the floor, the older children had no need to be told to put it again in its place.

VALUE OF TIME.—Lord Brougham, the most indefatigable man in England, often does not quit his study before midnight, and he is always up at four. Dr. Cotton Mather, who knew the value of time in every thing, was never willing to lose a moment of it. To effect this purpose he had written upon the door of his study, in large letters, "Be Brief." Ursines, a Professor in the University of Hiedelburg, wishing to prevent the idlers and babblers from interrupting him in his hours of study, had written at the entrance into his library, "Friend, whoever you may be, who enters here, be quick with your business, or go away." The learned Scaliger placed the following phrase at the door of his cabinet, "My time is my estate," The favorite maxim of Shakspeare was, "Consider time too precious to be spent in gossipping." "Friends are the real robbers of time," said Byron. An old attorney of Chatelet, was accustomed to get rid of such of his clients as were importunate, or he had little to hope from, by these words—"My good friends, time lost, goes for nothing." "Sire, *one word*," said a soldier one day to Frederick the Great, when presenting to him a request of Brevet Lieutenant, "If you say *two*," answered the Prince, "I will have you hanged." "SIGN," replied the soldier. The monarch, surprised at his presence of mind, immediately granted his request.

What might be done with the cost of Intemperance, if applied to useful objects.—The direct annual expence of ardent spirits consumed in the United States, may be stated at *sixty millions* of dollars. This sum would—

1. Build 6000 miles of railroad, at \$10,000 a mile in a single year—or,
2. It would furnish a Bible to every family on the globe in a single year—or,
3. It would build 120 ships of the line, at \$500,000 each, in a single year—or,
4. It would build a City of 10,000 houses, costing \$2,000 each, and sufficient to accommodate 150,000 persons, in a single year—or,
5. It would support 600,000 young men at college, at \$100 each, for a single year—or,
6. It would buy a farm, costing \$400, for each of the 150,000 paupers of our country, in a single year.

'A Whapper.'—The Editor of the Washington Metropolitan, has been presented with a Cabbage, measuring *twenty feet in circumference*.

POETRY, PUZZLES, &c.

NINA TO HER LAP-DOG.

O Y R U so I C cold,
Dear *Beau*, to my caress?
Can U not C I plainly told
Thereby my love's X S!

Whene'er I C R A of light,
I plunge U in the C;
Or C Z if U B at night
With thirst, I give U T.

From your D K of mirth, or rise
Of joy, I take my Q; [pise,
And Pincher's M T charms des-
In size though W.

B T or O P might S A
To Paint your F E G;
For ne'er from L M N tal clay
Came such an N T T!

Dismiss the P Q O my bird,
He must X Q Z B;
'Twas Jane the maid taught him
that word
Of stife, "O B C T."

N V makes puss your N M E,
For when your form is nigh,
Her C D coat can scarcely B
A P's worth in her I.

And should X U V E so good
E'er tempt the dog-thief's snare,
Despite X P D N C would
I C Q N E where.

Such X L N C merits well
The pencil of H B.
When dead, I'll write to L. E. L.
To write your L E G!

LAWYERS' SUITS.

Says Thomas, 'Harry, can you tell
How lawyers do, to dress so well?
Says Harry, 'Yes, you may rely
on't,
To get a suit, they'll strip a client,
Says Edward, 'No; they clothe
up him—
They first obtain the suit—then
strip him.

A PARADOX.

An article of clothing I [bay;
(Seven letters form its name) did
I struck one out, plac'd one in lieu:
Of animals it then made two.

AN ENIGMA:

I'm a small word and often nam'd,
Of letters six compos'd;
And by all classes I am claim'd,
Though some will be oppos'd.
If fifth and sixth rejected be,
What's left, the fair will prize,
Until she may detected be,
When she with heat denies.

A RIDDLE.

My complexion's dull and dark,
Yet I have a lovely size;
I am wingless, but the lark
Through the skies ascends not
higher;
Griefless tears I cause the fair,
And at my birth dissolve in air.

A Charade on a Lady.

My *first* is myself in a very short
word,
My *second's* a plaything, and you
are my *third*.

A PUZZLET.

A writer in the London Gazette
says, he has seen with his own eyes
the following—

WONDERFUL WONDERS:

A winged horse, fly in the air with
the swiftness of an eagle—
A year old pig, in a half gallon pot,
that never squealed—
A bann dance on a table to gratify
the idle;—and
A dead man in quest of a judicial
inquiry.

A PUZZLE.

Stand take three
I — — — my

COUNTING-HOUSE CALENDAR.

FOR THE YEAR

1837.

	Sunday	Monday	Tuesday	Wednesday	Thursday	Friday	Saturday
JANUARY	1	2	3	4	5	6	7
FEBRUARY	1	2	3	4	5	6	7
MARCH	1	2	3	4	5	6	7
APRIL	1	2	3	4	5	6	7
MAY	1	2	3	4	5	6	7
JUNE	1	2	3	4	5	6	7
JULY	1	2	3	4	5	6	7
AUGUST	1	2	3	4	5	6	7
SEPTEMBER	1	2	3	4	5	6	7
OCTOBER	1	2	3	4	5	6	7
NOVEMBER	1	2	3	4	5	6	7

18
19
20
21
22
23
24
25
26
27
28
29
30
31

Saturday

Friday

Thursday

1 2 3 4 5
6 7 8 9 10
11 12 13 14 15
16 17 18 19 20
21 22 23 24 25
26 27 28 29 30
31

