



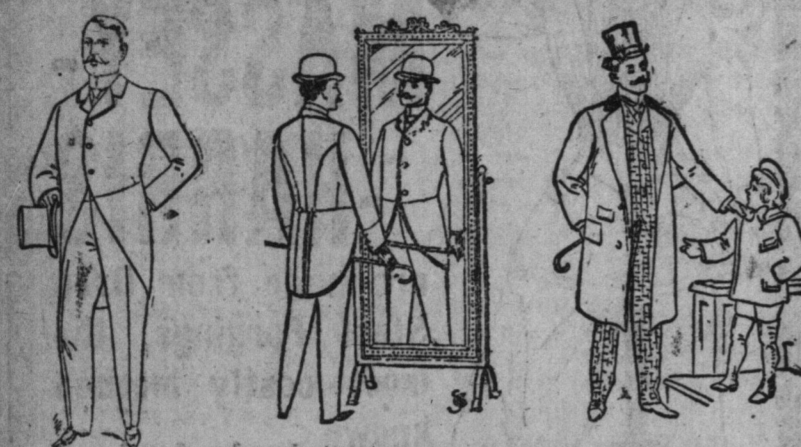




T. EATON CO. LIMITED

STORE CLOSED TO-DAY-GOOD FRIDAY

Clothing Style and Excellence.



A word or two to stylish dressers who wish to appear at their best on Easter Sunday. We can help you to a satisfactory selection of the New Suit, Overcoat or Hat you require.

Men's Clothing.

- Men's Fine West of England Black Venetian Flannel Suits, in three-buttoned, single-breasted, double-breasted styles, best farmer's satin linings, sizes 36 to 44. 12.50

Men's Shoes at \$1.50 a Pair.

We have two hundred and fifty pairs of men's sample Boots—all size 7—that were made to sell at \$2 to \$4 a pair, but having bought them right we are able to sell them all at one price, \$1.50 a pair, on Saturday morning.

T. EATON CO. LIMITED 190 YONGE ST., TORONTO.

TALKATIVE SCHOOL BOARD. All had their say on Trivial Matters and Little Business Was Done—New School Sites. The learned members of the Public School Board talked about half a ton of coal for a good part of an hour last night.

THE TORONTO WORLD ONE CENT MORNING PAPER.

1897 was 90,491,670 pounds, an average of 232 pounds per ton of 2000 pounds, or 11.6 per cent, of the weight of the beets. Reliable information shows that there will be in operation in the United States during 1898 seventeen factories, new factories being located in Utah (1), Oregon (1), California (4), Michigan (1), and New York (1).

THE ENGINEER'S REPORT. The Queen's Wharf project. The Engineer reports that the cost of establishing communication with the Island by way of Queen's Wharf would be \$42,000, made up of two sums, \$23,000 for constructing a roadway from 600 to the south pier of the channel to the Point, and the balance for the cost of a ferry boat to cross the channel and for the necessary conveniences for the boat.

NEW FOR A STRONG COMMITTEE. Mr. Hugh Blair has an excellent grasp of the arguments in favor of the removal of the Grand Trunk's head offices to this city. He fully realizes the great importance to Toronto of the transfer and concurs in the World's suggestion of organizing a committee of representative citizens to wait upon Mr. Hays and present to him Toronto's side of the case.

Men's Suits, in saque and cutaway styles, imported clays, twilled black worsteds, unbound; also black Venetian finished cloth, bound with narrow silk braid, good Italian cloth linings, and trimmings to match, sizes 35 to 44. 10.00

Men's Overcoats, Oxford grey West of England worsteds, medium length, single-breasted, front, good farmer's satin linings, mohair sleeve linings, sizes 34 to 44. 8.00

Men's Waterproof Coats, fine black cashmere Paramatta cloth, with sleeves, and 27-inch detachable fly-sleeves, best English worsteds, silk stitched edges, sizes 34 to 42. 10.00

THE UNITED STATES AND INTERNATIONAL DUTIES. It is singularly refreshing to hear the United States Government talking about Spain's neglect of precautions for the safety of the Maine in the harbor of Havana. It is always so alarmingly consistent in its own opinion, on the question of international rights and duties. But we in Canada know somewhat to the contrary.

THE PUPILS' GAMES. A concert was given in Broadway Hall by pupils of Bathurst-street School, for the purpose of providing funds to establish a library for the Junior IV. Form. Mr. B. H. Scott presided and Inspector Chapman was also present.

THE BEST SUGAR INDUSTRY. The Secretary of Agriculture for the United States has just transmitted to Congress a report on the present condition of the sugar-beet industry in that country. From the report we learn that the total amount of beet sugar made in the United States during the year

THE CASE OF DR. EASTWOOD

Gossips in Claremont are Very Busy at the Present Time. Charges of Abortion are Handled About What About Robert Graham, Whose Case is Brought by Edward Evans? The Doctor Has Been Discussed a Good Deal by the Village Gossips.

Claremont, Ont., April 7.—(Special).—The arrest of Dr. Eastwood at the conclusion of the Covington inquest last night has created a great deal of gossip in this village. In both cases abortion is the charge against the doctor, and from the developments when the first case comes up on Friday, it is clear that the doctor is charged with several acts of robbery, and gravely asserted that he meant to kill a nun.

Under the command of Adjutant Dowell (Stouffville), Capt. Cook (Yorkville), Capt. Kliney (Vanocover), will on the 10th inst. leave this city and board the steamer Pakatan at Vancouver for the Yukon. The party will comprise the advance guard of the Salvation Army into the gold fields. They will pitch a tent and proceed to bring out their men and dogs and to bombard the city in regular style.

Under the command of Adjutant Dowell (Stouffville), Capt. Cook (Yorkville), Capt. Kliney (Vanocover), will on the 10th inst. leave this city and board the steamer Pakatan at Vancouver for the Yukon. The party will comprise the advance guard of the Salvation Army into the gold fields. They will pitch a tent and proceed to bring out their men and dogs and to bombard the city in regular style.

Under the command of Adjutant Dowell (Stouffville), Capt. Cook (Yorkville), Capt. Kliney (Vanocover), will on the 10th inst. leave this city and board the steamer Pakatan at Vancouver for the Yukon. The party will comprise the advance guard of the Salvation Army into the gold fields. They will pitch a tent and proceed to bring out their men and dogs and to bombard the city in regular style.

Under the command of Adjutant Dowell (Stouffville), Capt. Cook (Yorkville), Capt. Kliney (Vanocover), will on the 10th inst. leave this city and board the steamer Pakatan at Vancouver for the Yukon. The party will comprise the advance guard of the Salvation Army into the gold fields. They will pitch a tent and proceed to bring out their men and dogs and to bombard the city in regular style.

Under the command of Adjutant Dowell (Stouffville), Capt. Cook (Yorkville), Capt. Kliney (Vanocover), will on the 10th inst. leave this city and board the steamer Pakatan at Vancouver for the Yukon. The party will comprise the advance guard of the Salvation Army into the gold fields. They will pitch a tent and proceed to bring out their men and dogs and to bombard the city in regular style.

Under the command of Adjutant Dowell (Stouffville), Capt. Cook (Yorkville), Capt. Kliney (Vanocover), will on the 10th inst. leave this city and board the steamer Pakatan at Vancouver for the Yukon. The party will comprise the advance guard of the Salvation Army into the gold fields. They will pitch a tent and proceed to bring out their men and dogs and to bombard the city in regular style.

Under the command of Adjutant Dowell (Stouffville), Capt. Cook (Yorkville), Capt. Kliney (Vanocover), will on the 10th inst. leave this city and board the steamer Pakatan at Vancouver for the Yukon. The party will comprise the advance guard of the Salvation Army into the gold fields. They will pitch a tent and proceed to bring out their men and dogs and to bombard the city in regular style.

Michie's Temporary 93 Yonge Groceries, Provisions, & Co. ATOSGOODE Next Tuesday's Non-jury sittings at 10 o'clock. Waivers to be conducted. Rule Canada Permanent. Dwyer Bank, Bank, J. W. Williamson, The Star v. Geo. Co., Freehold Loan.

Swiss Steam Laundry Allen Manufacturing Co., Props. 103, 105, 107 Simcoe Street. You're looking for someone these days who can clean curtains to your satisfaction. With special equipment, the use of proper soaps, and using water, every ounce of which is filtered, we know we can suit you. We have made a record in the cleaning of the finest curtains and house linen, pillow shams and that class of goods.

March 30, 1898. I have used Cottam's Seed and Bird Bread for a year, and find them the best. Enclosed you will find 25¢ for Cottam's Book on Birds and Bird Bread.—Andrew Hyde, Colborne, Ont.

GOOD! BETTER! BEST! Why pay 10 or 12 cents for poor bread when you can get the best for 5 cents? BREAD MADE IN 3 1/2 HOURS. BREAD MADE IN 3 1/2 HOURS. BREAD MADE IN 3 1/2 HOURS.

Ontario Ladies' College Whitby, Ont. Next term will begin April 14. This will be a favorable time to enter upon a course of study. Magnificent buildings, beautiful grounds, healthful surroundings and the highest educational advantages make this college an ideal home in which to secure an education.

HOME AND SCHOOL FOR 'FAMMERS'—Herrings have added an 'Educational Department' with our school for each out-let. We have placed this department under the supervision of a properly educated teacher of experience and ability. We are now in a position to accept children of all ages. The course of study is adapted to the needs of the children. We have a full and complete course of instruction in all the branches of the Lord's Day Alliance petition to the Government.

VINMARIAN Nourishes, strengthens, sustains and refreshes; is very palatable, and may be borne by the most enfeebled stomach; never produces constipation, but, on the contrary, it aids digestion and assimilation, removing fatigue, and improving the appetite.

He is Not Gold in his love to me if he is not gold in his gifts to me. Take Warning by the above; don't buy your sweetheart a paltry imitation gold ring, when you can sell you a solid gold, genuine diamond ring for \$5.00.

SGHEUER'S WHOLESALE AND RETAIL. Sole Agents for three times a day. LAWRENCE A. WILSON & CO., Montreal.

John Gatto KING-STREET Opposite the Post-Office. A beautiful collection of... Easter Mill... Spring Novelties... Easter Mill... Spring Novelties... Easter Mill... Spring Novelties...







WHOLESALE MERCHANTS.

To the Trade.

THE LATEST for the assorting trade that we have received are AMERICAN novelties in Art Cotton Goods and Golden Draperies.

FILLING LETTER ORDERS A SPECIALTY.

John Macdonald & Co.

Wellington and Front Streets E., TORONTO.

FINANCIAL BROKERS.

OSLER & HAMMOND STOCK BROKERS and FINANCIAL AGENTS.

F. H. GOOCH, Fire Insurance Underwriter and Adjuster.

STOCKS, BONDS, ETC. on Toronto, Montreal and New York Stock Exchanges.

WYATT & CO., Members Toronto Stock Exchange.

J. A. GORMALY & CO. 56 and 58 VICTORIA ST.

R. D. Fisher & Co. Brokers, 10 James Building, Corner King and Yonge Streets.

HENRY A. KING & CO. STOCKS, GRAIN, PROVISIONS.

A. E. AMES & CO. Money to Lend on marketable Stocks and Bonds.

JOHN STARK & CO. 26 Toronto Street.

R. H. TEMPLE, Member Toronto Stock Exchange.

A. E. WEBB, Member Toronto Stock Exchange.

FRED W. ROBERTS, MANNING ARCADE, Representing Quebec Fire Assurance Co.

C. C. BAINES, (Member Toronto Stock Exchange).

GARDEN WHEELBARROWS, ROLLERS, ETC. RICE LEWIS & SON (LIMITED).

BETTER, CHEAPER and lasts longer with less noise than American.

WATER WHITE, Take none but "Barnie" Water White.

QUEEN CITY OIL CO. LIMITED, SAMUEL ROGERS PRES.

WHEAT LOWER IN CHICAGO

Largely Because of Favorable Growing Crop Reports.

Wheat market in Chicago today, owing to bullish news, the increased likelihood of peace, the improved crop outlook, wheat cables and heavy selling by shorts, caused a decline of 1c in the July futures and 1/2c in the remainder of the market.

Thursday Evening, April 7. Wheat experienced a weak session in Chicago today, owing to bullish news.

Wheat market in Chicago today, owing to bullish news, the increased likelihood of peace, the improved crop outlook, wheat cables and heavy selling by shorts, caused a decline of 1c in the July futures and 1/2c in the remainder of the market.

Chicago July wheat, puts 83 1/2c, calls 84 1/2c. Chicago May corn puts 29 1/2c, calls 29 3/4c.

Price Currents says: Hard free-trading wheat to be put on the market, weather retarded and seedling and preparations. Wheat apparently not disturbed in promising outlook.

Total clearances from Atlantic ports to-day (Newport to hear from), were: Wheat, 4,000,000 bushels; corn, 1,000,000 bushels.

Chicago's flour output for the week has been exceedingly small, only 212,000 bbls. against 222,000 last year, and the news from Minneapolis is that some of the mills up there will close down next year.

Receipts of wheat at Minneapolis and Duluth to-day were 150 cars, as against 150 cars to-day last year.

Chicago's flour output for the week has been exceedingly small, only 212,000 bbls. against 222,000 last year, and the news from Minneapolis is that some of the mills up there will close down next year.

There is present among strong demand for Ontario wheat. During the past three days 250 car loads of No. 2 wheat have been purchased in the province for export to the United States.

Letter is rapidly decreasing his stocks of wheat. Mr. Charles Cousensman of Concession and Day evidently has the exporting of his wheat to the United States in Boston this week, and closed contracts for the export of 100,000 bushels of No. 2 wheat to Boston vessels. Mr. Cousensman will also engage berth room in New York and New Orleans.

Letter is rapidly decreasing his stocks of wheat. Mr. Charles Cousensman of Concession and Day evidently has the exporting of his wheat to the United States in Boston this week, and closed contracts for the export of 100,000 bushels of No. 2 wheat to Boston vessels.

Letter is rapidly decreasing his stocks of wheat. Mr. Charles Cousensman of Concession and Day evidently has the exporting of his wheat to the United States in Boston this week, and closed contracts for the export of 100,000 bushels of No. 2 wheat to Boston vessels.

Letter is rapidly decreasing his stocks of wheat. Mr. Charles Cousensman of Concession and Day evidently has the exporting of his wheat to the United States in Boston this week, and closed contracts for the export of 100,000 bushels of No. 2 wheat to Boston vessels.

Letter is rapidly decreasing his stocks of wheat. Mr. Charles Cousensman of Concession and Day evidently has the exporting of his wheat to the United States in Boston this week, and closed contracts for the export of 100,000 bushels of No. 2 wheat to Boston vessels.

Letter is rapidly decreasing his stocks of wheat. Mr. Charles Cousensman of Concession and Day evidently has the exporting of his wheat to the United States in Boston this week, and closed contracts for the export of 100,000 bushels of No. 2 wheat to Boston vessels.

Letter is rapidly decreasing his stocks of wheat. Mr. Charles Cousensman of Concession and Day evidently has the exporting of his wheat to the United States in Boston this week, and closed contracts for the export of 100,000 bushels of No. 2 wheat to Boston vessels.

Letter is rapidly decreasing his stocks of wheat. Mr. Charles Cousensman of Concession and Day evidently has the exporting of his wheat to the United States in Boston this week, and closed contracts for the export of 100,000 bushels of No. 2 wheat to Boston vessels.

Letter is rapidly decreasing his stocks of wheat. Mr. Charles Cousensman of Concession and Day evidently has the exporting of his wheat to the United States in Boston this week, and closed contracts for the export of 100,000 bushels of No. 2 wheat to Boston vessels.

Letter is rapidly decreasing his stocks of wheat. Mr. Charles Cousensman of Concession and Day evidently has the exporting of his wheat to the United States in Boston this week, and closed contracts for the export of 100,000 bushels of No. 2 wheat to Boston vessels.

LIBERAL 2100 BUSHELS OF GRAIN.

Prices generally remained steady. Wheat steady; 500 bushels sold at the following prices: White 79 1/2c to 80c, red 80c to 80 1/2c, and some 81c to 81 1/2c per bushel.

Wheat steady; 500 bushels sold at the following prices: White 79 1/2c to 80c, red 80c to 80 1/2c, and some 81c to 81 1/2c per bushel.

Wheat steady; 500 bushels sold at the following prices: White 79 1/2c to 80c, red 80c to 80 1/2c, and some 81c to 81 1/2c per bushel.

Wheat steady; 500 bushels sold at the following prices: White 79 1/2c to 80c, red 80c to 80 1/2c, and some 81c to 81 1/2c per bushel.

Wheat steady; 500 bushels sold at the following prices: White 79 1/2c to 80c, red 80c to 80 1/2c, and some 81c to 81 1/2c per bushel.

Wheat steady; 500 bushels sold at the following prices: White 79 1/2c to 80c, red 80c to 80 1/2c, and some 81c to 81 1/2c per bushel.

Wheat steady; 500 bushels sold at the following prices: White 79 1/2c to 80c, red 80c to 80 1/2c, and some 81c to 81 1/2c per bushel.

Wheat steady; 500 bushels sold at the following prices: White 79 1/2c to 80c, red 80c to 80 1/2c, and some 81c to 81 1/2c per bushel.

Wheat steady; 500 bushels sold at the following prices: White 79 1/2c to 80c, red 80c to 80 1/2c, and some 81c to 81 1/2c per bushel.

Wheat steady; 500 bushels sold at the following prices: White 79 1/2c to 80c, red 80c to 80 1/2c, and some 81c to 81 1/2c per bushel.

Wheat steady; 500 bushels sold at the following prices: White 79 1/2c to 80c, red 80c to 80 1/2c, and some 81c to 81 1/2c per bushel.

Wheat steady; 500 bushels sold at the following prices: White 79 1/2c to 80c, red 80c to 80 1/2c, and some 81c to 81 1/2c per bushel.

Wheat steady; 500 bushels sold at the following prices: White 79 1/2c to 80c, red 80c to 80 1/2c, and some 81c to 81 1/2c per bushel.

Wheat steady; 500 bushels sold at the following prices: White 79 1/2c to 80c, red 80c to 80 1/2c, and some 81c to 81 1/2c per bushel.

Wheat steady; 500 bushels sold at the following prices: White 79 1/2c to 80c, red 80c to 80 1/2c, and some 81c to 81 1/2c per bushel.

Wheat steady; 500 bushels sold at the following prices: White 79 1/2c to 80c, red 80c to 80 1/2c, and some 81c to 81 1/2c per bushel.

Wheat steady; 500 bushels sold at the following prices: White 79 1/2c to 80c, red 80c to 80 1/2c, and some 81c to 81 1/2c per bushel.

Wheat steady; 500 bushels sold at the following prices: White 79 1/2c to 80c, red 80c to 80 1/2c, and some 81c to 81 1/2c per bushel.

Wheat steady; 500 bushels sold at the following prices: White 79 1/2c to 80c, red 80c to 80 1/2c, and some 81c to 81 1/2c per bushel.

Wheat steady; 500 bushels sold at the following prices: White 79 1/2c to 80c, red 80c to 80 1/2c, and some 81c to 81 1/2c per bushel.

Wheat steady; 500 bushels sold at the following prices: White 79 1/2c to 80c, red 80c to 80 1/2c, and some 81c to 81 1/2c per bushel.

CHICAGO MARKETS.

Henry A. King & Co. report the following fluctuations on the Chicago Board of Trade:

Wheat—May 83 1/2c, July 84 1/2c, Sept 85 1/2c, Dec 86 1/2c, Jan 87 1/2c, Feb 88 1/2c, Mar 89 1/2c, Apr 90 1/2c, May 91 1/2c, Jun 92 1/2c, Jul 93 1/2c, Aug 94 1/2c, Sep 95 1/2c, Oct 96 1/2c, Nov 97 1/2c, Dec 98 1/2c, Jan 99 1/2c, Feb 100 1/2c, Mar 101 1/2c, Apr 102 1/2c, May 103 1/2c, Jun 104 1/2c, Jul 105 1/2c, Aug 106 1/2c, Sep 107 1/2c, Oct 108 1/2c, Nov 109 1/2c, Dec 110 1/2c, Jan 111 1/2c, Feb 112 1/2c, Mar 113 1/2c, Apr 114 1/2c, May 115 1/2c, Jun 116 1/2c, Jul 117 1/2c, Aug 118 1/2c, Sep 119 1/2c, Oct 120 1/2c, Nov 121 1/2c, Dec 122 1/2c, Jan 123 1/2c, Feb 124 1/2c, Mar 125 1/2c, Apr 126 1/2c, May 127 1/2c, Jun 128 1/2c, Jul 129 1/2c, Aug 130 1/2c, Sep 131 1/2c, Oct 132 1/2c, Nov 133 1/2c, Dec 134 1/2c, Jan 135 1/2c, Feb 136 1/2c, Mar 137 1/2c, Apr 138 1/2c, May 139 1/2c, Jun 140 1/2c, Jul 141 1/2c, Aug 142 1/2c, Sep 143 1/2c, Oct 144 1/2c, Nov 145 1/2c, Dec 146 1/2c, Jan 147 1/2c, Feb 148 1/2c, Mar 149 1/2c, Apr 150 1/2c, May 151 1/2c, Jun 152 1/2c, Jul 153 1/2c, Aug 154 1/2c, Sep 155 1/2c, Oct 156 1/2c, Nov 157 1/2c, Dec 158 1/2c, Jan 159 1/2c, Feb 160 1/2c, Mar 161 1/2c, Apr 162 1/2c, May 163 1/2c, Jun 164 1/2c, Jul 165 1/2c, Aug 166 1/2c, Sep 167 1/2c, Oct 168 1/2c, Nov 169 1/2c, Dec 170 1/2c, Jan 171 1/2c, Feb 172 1/2c, Mar 173 1/2c, Apr 174 1/2c, May 175 1/2c, Jun 176 1/2c, Jul 177 1/2c, Aug 178 1/2c, Sep 179 1/2c, Oct 180 1/2c, Nov 181 1/2c, Dec 182 1/2c, Jan 183 1/2c, Feb 184 1/2c, Mar 185 1/2c, Apr 186 1/2c, May 187 1/2c, Jun 188 1/2c, Jul 189 1/2c, Aug 190 1/2c, Sep 191 1/2c, Oct 192 1/2c, Nov 193 1/2c, Dec 194 1/2c, Jan 195 1/2c, Feb 196 1/2c, Mar 197 1/2c, Apr 198 1/2c, May 199 1/2c, Jun 200 1/2c, Jul 201 1/2c, Aug 202 1/2c, Sep 203 1/2c, Oct 204 1/2c, Nov 205 1/2c, Dec 206 1/2c, Jan 207 1/2c, Feb 208 1/2c, Mar 209 1/2c, Apr 210 1/2c, May 211 1/2c, Jun 212 1/2c, Jul 213 1/2c, Aug 214 1/2c, Sep 215 1/2c, Oct 216 1/2c, Nov 217 1/2c, Dec 218 1/2c, Jan 219 1/2c, Feb 220 1/2c, Mar 221 1/2c, Apr 222 1/2c, May 223 1/2c, Jun 224 1/2c, Jul 225 1/2c, Aug 226 1/2c, Sep 227 1/2c, Oct 228 1/2c, Nov 229 1/2c, Dec 230 1/2c, Jan 231 1/2c, Feb 232 1/2c, Mar 233 1/2c, Apr 234 1/2c, May 235 1/2c, Jun 236 1/2c, Jul 237 1/2c, Aug 238 1/2c, Sep 239 1/2c, Oct 240 1/2c, Nov 241 1/2c, Dec 242 1/2c, Jan 243 1/2c, Feb 244 1/2c, Mar 245 1/2c, Apr 246 1/2c, May 247 1/2c, Jun 248 1/2c, Jul 249 1/2c, Aug 250 1/2c, Sep 251 1/2c, Oct 252 1/2c, Nov 253 1/2c, Dec 254 1/2c, Jan 255 1/2c, Feb 256 1/2c, Mar 257 1/2c, Apr 258 1/2c, May 259 1/2c, Jun 260 1/2c, Jul 261 1/2c, Aug 262 1/2c, Sep 263 1/2c, Oct 264 1/2c, Nov 265 1/2c, Dec 266 1/2c, Jan 267 1/2c, Feb 268 1/2c, Mar 269 1/2c, Apr 270 1/2c, May 271 1/2c, Jun 272 1/2c, Jul 273 1/2c, Aug 274 1/2c, Sep 275 1/2c, Oct 276 1/2c, Nov 277 1/2c, Dec 278 1/2c, Jan 279 1/2c, Feb 280 1/2c, Mar 281 1/2c, Apr 282 1/2c, May 283 1/2c, Jun 284 1/2c, Jul 285 1/2c, Aug 286 1/2c, Sep 287 1/2c, Oct 288 1/2c, Nov 289 1/2c, Dec 290 1/2c, Jan 291 1/2c, Feb 292 1/2c, Mar 293 1/2c, Apr 294 1/2c, May 295 1/2c, Jun 296 1/2c, Jul 297 1/2c, Aug 298 1/2c, Sep 299 1/2c, Oct 300 1/2c, Nov 301 1/2c, Dec 302 1/2c, Jan 303 1/2c, Feb 304 1/2c, Mar 305 1/2c, Apr 306 1/2c, May 307 1/2c, Jun 308 1/2c, Jul 309 1/2c, Aug 310 1/2c, Sep 311 1/2c, Oct 312 1/2c, Nov 313 1/2c, Dec 314 1/2c, Jan 315 1/2c, Feb 316 1/2c, Mar 317 1/2c, Apr 318 1/2c, May 319 1/2c, Jun 320 1/2c, Jul 321 1/2c, Aug 322 1/2c, Sep 323 1/2c, Oct 324 1/2c, Nov 325 1/2c, Dec 326 1/2c, Jan 327 1/2c, Feb 328 1/2c, Mar 329 1/2c, Apr 330 1/2c, May 331 1/2c, Jun 332 1/2c, Jul 333 1/2c, Aug 334 1/2c, Sep 335 1/2c, Oct 336 1/2c, Nov 337 1/2c, Dec 338 1/2c, Jan 339 1/2c, Feb 340 1/2c, Mar 341 1/2c, Apr 342 1/2c, May 343 1/2c, Jun 344 1/2c, Jul 345 1/2c, Aug 346 1/2c, Sep 347 1/2c, Oct 348 1/2c, Nov 349 1/2c, Dec 350 1/2c, Jan 351 1/2c, Feb 352 1/2c, Mar 353 1/2c, Apr 354 1/2c, May 355 1/2c, Jun 356 1/2c, Jul 357 1/2c, Aug 358 1/2c, Sep 359 1/2c, Oct 360 1/2c, Nov 361 1/2c, Dec 362 1/2c, Jan 363 1/2c, Feb 364 1/2c, Mar 365 1/2c, Apr 366 1/2c, May 367 1/2c, Jun 368 1/2c, Jul 369 1/2c, Aug 370 1/2c, Sep 371 1/2c, Oct 372 1/2c, Nov 373 1/2c, Dec 374 1/2c, Jan 375 1/2c, Feb 376 1/2c, Mar 377 1/2c, Apr 378 1/2c, May 379 1/2c, Jun 380 1/2c, Jul 381 1/2c, Aug 382 1/2c, Sep 383 1/2c, Oct 384 1/2c, Nov 385 1/2c, Dec 386 1/2c, Jan 387 1/2c, Feb 388 1/2c, Mar 389 1/2c, Apr 390 1/2c, May 391 1/2c, Jun 392 1/2c, Jul 393 1/2c, Aug 394 1/2c, Sep 395 1/2c, Oct 396 1/2c, Nov 397 1/2c, Dec 398 1/2c, Jan 399 1/2c, Feb 400 1/2c, Mar 401 1/2c, Apr 402 1/2c, May 403 1/2c, Jun 404 1/2c, Jul 405 1/2c, Aug 406 1/2c, Sep 407 1/2c, Oct 408 1/2c, Nov 409 1/2c, Dec 410 1/2c, Jan 411 1/2c, Feb 412 1/2c, Mar 413 1/2c, Apr 414 1/2c, May 415 1/2c, Jun 416 1/2c, Jul 417 1/2c, Aug 418 1/2c, Sep 419 1/2c, Oct 420 1/2c, Nov 421 1/2c, Dec 422 1/2c, Jan 423 1/2c, Feb 424 1/2c, Mar 425 1/2c, Apr 426 1/2c, May 427 1/2c, Jun 428 1/2c, Jul 429 1/2c, Aug 430 1/2c, Sep 431 1/2c, Oct 432 1/2c, Nov 433 1/2c, Dec 434 1/2c, Jan 435 1/2c, Feb 436 1/2c, Mar 437 1/2c, Apr 438 1/2c, May 439 1/2c, Jun 440 1/2c, Jul 441 1/2c, Aug 442 1/2c, Sep 443 1/2c, Oct 444 1/2c, Nov 445 1/2c, Dec 446 1/2c, Jan 447 1/2c, Feb 448 1/2c, Mar 449 1/2c, Apr 450 1/2c, May 451 1/2c, Jun 452 1/2c, Jul 453 1/2c, Aug 454 1/2c, Sep 455 1/2c, Oct 456 1/2c, Nov 457 1/2c, Dec 458 1/2c, Jan 459 1/2c, Feb 460 1/2c, Mar 461 1/2c, Apr 462 1/2c, May 463 1/2c, Jun 464 1/2c, Jul 465 1/2c, Aug 466 1/2c, Sep 467 1/2c, Oct 468 1/2c, Nov 469 1/2c, Dec 470 1/2c, Jan 471 1/2c, Feb 472 1/2c, Mar 473 1/2c, Apr 474 1/2c, May 475 1/2c, Jun 476 1/2c, Jul 477 1/2c, Aug 478 1/2c, Sep 479 1/2c, Oct 480 1/2c, Nov 481 1/2c, Dec 482 1/2c, Jan 483 1/2c, Feb 484 1/2c, Mar 485 1/2c, Apr 486 1/2c, May 487 1/2c, Jun 488 1/2c, Jul 489 1/2c, Aug 490 1/2c, Sep 491 1/2c, Oct 492 1/2c, Nov 493 1/2c, Dec 494 1/2c, Jan 495 1/2c, Feb 496 1/2c, Mar 497 1/2c, Apr 498 1/2c, May 499 1/2c, Jun 500 1/2c, Jul 501 1/2c, Aug 502 1/2c, Sep 503 1/2c, Oct 504 1/2c, Nov 505 1/2c, Dec 506 1/2c, Jan 507 1/2c, Feb 508 1/2c, Mar 509 1/2c, Apr 510 1/2c, May 511 1/2c, Jun 512 1/2c, Jul 513 1/2c, Aug 514 1/2c, Sep 515 1/2c, Oct 516 1/2c, Nov 517 1/2c, Dec 518 1/2c, Jan 519 1/2c, Feb 520 1/2c, Mar 521 1/2c, Apr 522 1/2c, May 523 1/2c, Jun 524 1/2c, Jul 525 1/2c, Aug 526 1/2c, Sep 527 1/2c, Oct 528 1/2c, Nov 529 1/2c, Dec 530 1/2c, Jan 531 1/2c, Feb 532 1/2c, Mar 533 1/2c, Apr 534 1/2c, May 535 1/2c, Jun 536 1/2c, Jul 537 1/2c, Aug 538 1/2c, Sep 539 1/2c, Oct 540 1/2c, Nov 541 1/2c, Dec 542 1/2c, Jan 543 1/2c, Feb 544 1/2c, Mar 545 1/2c, Apr 546 1/2c, May 547 1/2c, Jun 548 1/2c, Jul 549 1/2c, Aug 550 1/2c, Sep 551 1/2c, Oct 552 1/2c, Nov 553 1/2c, Dec 554 1/2c, Jan 555 1/2c, Feb 556 1/2c, Mar 557 1/2c, Apr 558 1/2c, May 559 1/2c, Jun 560 1/2c, Jul 561 1/2c, Aug 562 1/2c, Sep 563 1/2c, Oct 564 1/2c, Nov 565 1/2c, Dec 566 1/2c, Jan 567 1/2c, Feb 568 1/2c, Mar 569 1/2c, Apr 570 1/2c, May 571 1/2c, Jun 572 1/2c, Jul 573 1/2c, Aug 574 1/2c, Sep 575 1/2c, Oct 576 1/2c, Nov 577 1/2c, Dec 578 1/2c, Jan 579 1/2c, Feb 580 1/2c, Mar 581 1/2c, Apr 582 1/2c, May 583 1/2c, Jun 584 1/2c, Jul 585 1/2c, Aug 586 1/2c, Sep 587 1/2c, Oct 588 1/2c, Nov 589 1/2c, Dec 590 1/2c, Jan 591 1/2c, Feb 592 1/2c, Mar 593 1/2c, Apr 594 1/2c, May 595 1/2c, Jun 596 1/2c, Jul 597 1/2c, Aug 598 1/2c, Sep 599 1/2c, Oct 600 1/2c, Nov 601 1/2c, Dec 602 1/2c, Jan 603 1/2c, Feb 604 1/2c, Mar 605 1/2c, Apr 606 1/2c, May 607 1/2c, Jun 608 1/2c, Jul 609 1/2c, Aug 610 1/2c, Sep 611 1/2c, Oct 612 1/2c, Nov 613 1/2c, Dec 614 1/2c, Jan 615 1/2c, Feb 616 1/2c, Mar 617 1/2c, Apr 618 1/2c, May 619 1/2c, Jun 620 1/2c, Jul 621 1/2c, Aug 622 1/2c, Sep 623 1/2c, Oct 624 1/2c, Nov 625 1/2c, Dec 626 1/2c, Jan 627 1/2c, Feb 628 1/2c, Mar 629 1/2c, Apr 630 1/2c, May 631 1/2c, Jun 632 1/2c, Jul 633 1/2c, Aug 634 1/2c, Sep 635 1/2c, Oct 636 1/2c, Nov 637 1/2c, Dec 638 1/2c, Jan 639 1/2c, Feb 640 1/2c, Mar 641 1/2c, Apr 642 1/2c, May 643 1/2c, Jun 644 1/2c, Jul 645 1/2c, Aug 646 1/2c, Sep 647 1/2c, Oct 648 1/2c, Nov 649 1/2c, Dec 650 1/2c, Jan 651 1/2c, Feb 652 1/2c, Mar 653 1/2c, Apr 654 1/2c, May 655 1/2c, Jun 656 1/2c, Jul 657 1/2c, Aug 658 1/2c, Sep 659 1/2c, Oct 660 1/2c, Nov 661 1/2c, Dec 662 1/2c, Jan 663 1/2c, Feb 664 1/2c, Mar 665 1/2c, Apr 666 1/2c, May 667 1/2c, Jun 668 1/2c, Jul 669 1/2c, Aug 670 1/2c, Sep 671 1/2c, Oct 672 1/2c, Nov 673 1/2c, Dec 674 1/2c, Jan 675 1/2c, Feb 676 1/2c, Mar 677 1/2c, Apr 678 1/2c, May 679 1/2c, Jun 680 1/2c, Jul 681 1/2c, Aug 682 1/2c, Sep 683 1/2c, Oct 684 1/2c, Nov 685 1/2c, Dec 686 1/2c, Jan 687 1/2c, Feb 688 1/2c, Mar 689 1/2c, Apr 690 1/2c, May 691 1/2c, Jun 692 1/2c, Jul 693 1/2c, Aug 694 1/2c, Sep 695 1/2c, Oct 696 1/2c, Nov 697 1/2c, Dec 698 1/2c, Jan 699 1/2c, Feb 700 1/2c, Mar 701 1/2c, Apr 702 1/2c, May 703 1/2c, Jun 704 1/2c, Jul 705 1/2c, Aug 706 1/2c, Sep 707 1/2c, Oct 708 1/2c, Nov 709 1/2c, Dec 710 1/2c, Jan 711 1/2c, Feb 712 1/2c, Mar 713 1/2c, Apr 714 1/2c, May 715 1/2c, Jun 716 1/2c, Jul 717 1/2c, Aug 718 1/2c, Sep 719 1/2c, Oct 720 1/2c, Nov 721 1/2