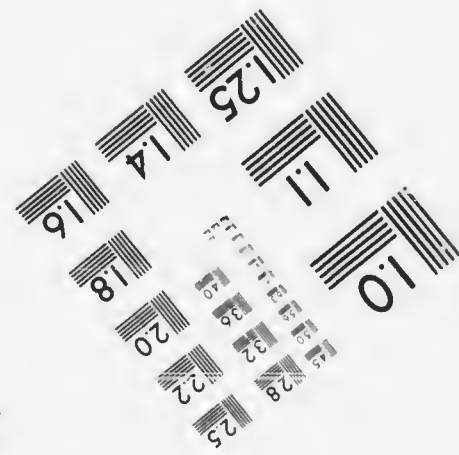
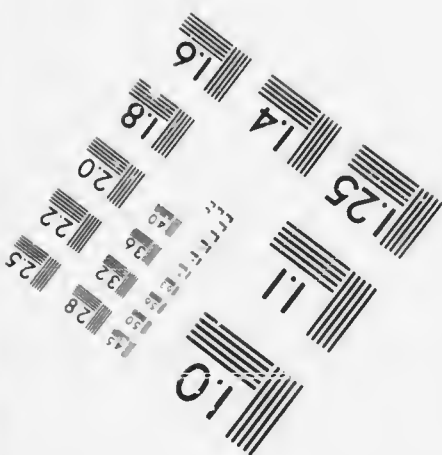
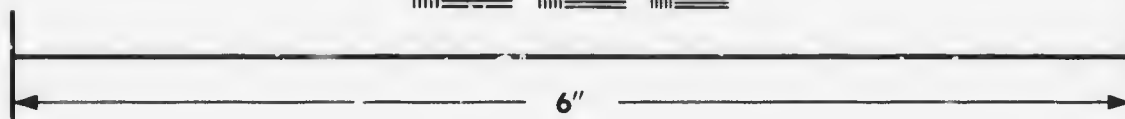
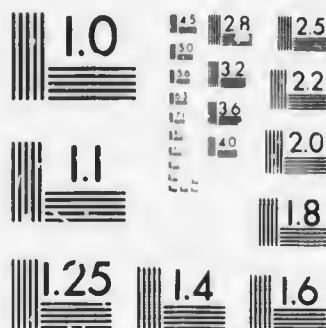


**IMAGE EVALUATION
TEST TARGET (MT-3)**



**Photographic
Sciences
Corporation**

23 WEST MAIN STREET
WEBSTER, N.Y. 14580
(716) 872-4503

25
22

**CIHM/ICMH
Microfiche
Series.**

**CIHM/ICMH
Collection de
microfiches.**



Canadian Institute for Historical Microreproductions / Institut canadien de microreproductions historiques

© 1987

Technical and Bibliographic Notes/Notes techniques et bibliographiques

The Institute has attempted to obtain the best original copy available for filming. Features of this copy which may be bibliographically unique, which may alter any of the images in the reproduction, or which may significantly change the usual method of filming, are checked below.

L'Institut a microfilmé le meilleur exemplaire qu'il lui a été possible de se procurer. Les détails de cet exemplaire qui sont peut-être uniques du point de vue bibliographique, qui peuvent modifier une image reproduite, ou qui peuvent exiger une modification dans la méthode normale de filmage sont indiqués ci-dessous.

- | | |
|--|--|
| <input checked="" type="checkbox"/> Coloured covers/
Couverture de couleur | <input type="checkbox"/> Coloured pages/
Pages de couleur |
| <input type="checkbox"/> Covers damaged/
Couverture endommagée | <input type="checkbox"/> Pages damaged/
Pages endommagées |
| <input type="checkbox"/> Covers restored and/or laminated/
Couverture restaurée et/ou pelliculée | <input type="checkbox"/> Pages restored and/or laminated/
Pages restaurées et/ou pelliculées |
| <input type="checkbox"/> Cover title missing/
Le titre de couverture manque | <input checked="" type="checkbox"/> Pages discoloured, stained or foxed/
Pages décolorées, tachetées ou piquées |
| <input checked="" type="checkbox"/> Coloured maps/
Cartes géographiques en couleur | <input checked="" type="checkbox"/> Pages detached/
Pages détachées |
| <input checked="" type="checkbox"/> Coloured ink (i.e. other than blue or black)/
Encre de couleur (i.e. autre que bleue ou noire) | <input checked="" type="checkbox"/> Showthrough/
Transparence |
| <input type="checkbox"/> Coloured plates and/or illustrations/
Planches et/ou illustrations en couleur | <input type="checkbox"/> Quality of print varies/
Qualité inégale de l'impression |
| <input type="checkbox"/> Bound with other material/
Relié avec d'autres documents | <input type="checkbox"/> Includes supplementary material/
Comprend du matériel supplémentaire |
| <input type="checkbox"/> Tight binding may cause shadows or distortion
along interior margin/
La reliure serrée peut causer de l'ombre ou de la
distorsion le long de la marge intérieure | <input type="checkbox"/> Only edition available/
Seule édition disponible |
| <input type="checkbox"/> Blank leaves added during restoration may
appear within the text. Whenever possible, these
have been omitted from filming/
Il se peut que certaines pages blanches ajoutées
lors d'une restauration apparaissent dans le texte,
mais, lorsque cela était possible, ces pages n'ont
pas été filmées. | <input type="checkbox"/> Pages wholly or partially obscured by errata
slips, tissues, etc., have been refilmed to
ensure the best possible image/
Les pages totalement ou partiellement
obscurcies par un feuillet d'errata, une pelure,
etc., ont été filmées à nouveau de façon à
obtenir la meilleure image possible. |
| <input checked="" type="checkbox"/> Additional comments:/
Commentaires supplémentaires: Pages 11 & 12 are missing. | |

This item is filmed at the reduction ratio checked below/
Ce document est filmé au taux de réduction indiqué ci-dessous.

10X	12X	14X	16X	18X	20X	22X	24X	26X	28X	30X	32X
				✓							

The copy filmed here has been reproduced thanks to the generosity of:

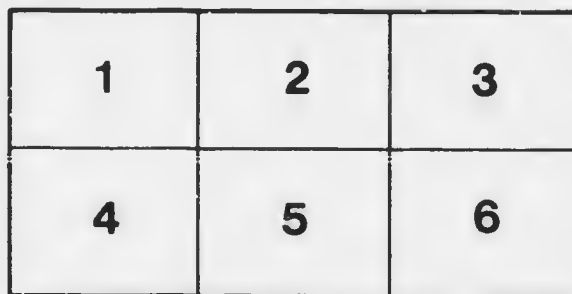
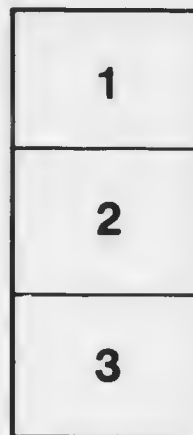
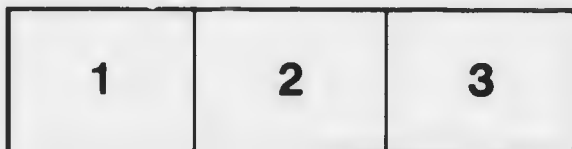
Douglas Library
Queen's University

The images appearing here are the best quality possible considering the condition and legibility of the original copy and in keeping with the filming contract specifications.

Original copies in printed paper covers are filmed beginning with the front cover and ending on the last page with a printed or illustrated impression, or the back cover when appropriate. All other original copies are filmed beginning on the first page with a printed or illustrated impression, and ending on the last page with a printed or illustrated impression.

The last recorded frame on each microfiche shall contain the symbol \rightarrow (meaning "CONTINUED"), or the symbol ∇ (meaning "END"), whichever applies.

Maps, plates, charts, etc., may be filmed at different reduction ratios. Those too large to be entirely included in one exposure are filmed beginning in the upper left hand corner, left to right and top to bottom, as many frames as required. The following diagrams illustrate the method:



L'exemplaire filmé fut reproduit grâce à la générosité de:

Douglas Library
Queen's University

Les images suivantes ont été reproduites avec le plus grand soin, compte tenu de la condition et de la netteté de l'exemplaire filmé, et en conformité avec les conditions du contrat de filmage.

Les exemplaires originaux dont la couverture en papier est imprimée sont filmés en commençant par la première page et en terminant soit par la dernière page qui comporte une empreinte d'impression ou d'illustration, soit par le second plat, selon le cas. Tous les autres exemplaires originaux sont filmés en commençant par la première page qui comporte une empreinte d'impression ou d'illustration et en terminant par la dernière page qui comporte une telle empreinte.

Un des symboles suivants apparaîtra sur la dernière image de chaque microfiche, selon le cas: le symbole \rightarrow signifie "A SUIVRE", le symbole ∇ signifie "FIN".

Les cartes, planches, tableaux, etc., peuvent être filmés à des taux de réduction différents. Lorsque le document est trop grand pour être reproduit en un seul cliché, il est filmé à partir de l'angle supérieur gauche, de gauche à droite, et de haut en bas, en prenant le nombre d'images nécessaire. Les diagrammes suivants illustrent la méthode.



1000 Island
House
Season of '88

LP

F5012

1888

T 526

... Co.,
SILVERSMITHS.



Makers of the highest class of Wares in **Solid Silver**, with the most extensive and complete works in the world, and with a Corps of Artists and Artisans without equal,

ALSO MAKERS OF THE

Gorham Plated Ware,

the best hard metal, silver soldered, and most heavily plated ware made.

This plate is much appreciated for use in Country Houses, Clubs, Hotels and Steamships; the durability and strength especially commend it for the latter uses.

Sold by all the best class of Jewelers throughout the U. S.

Broadway and 19th Street,

- New York City.

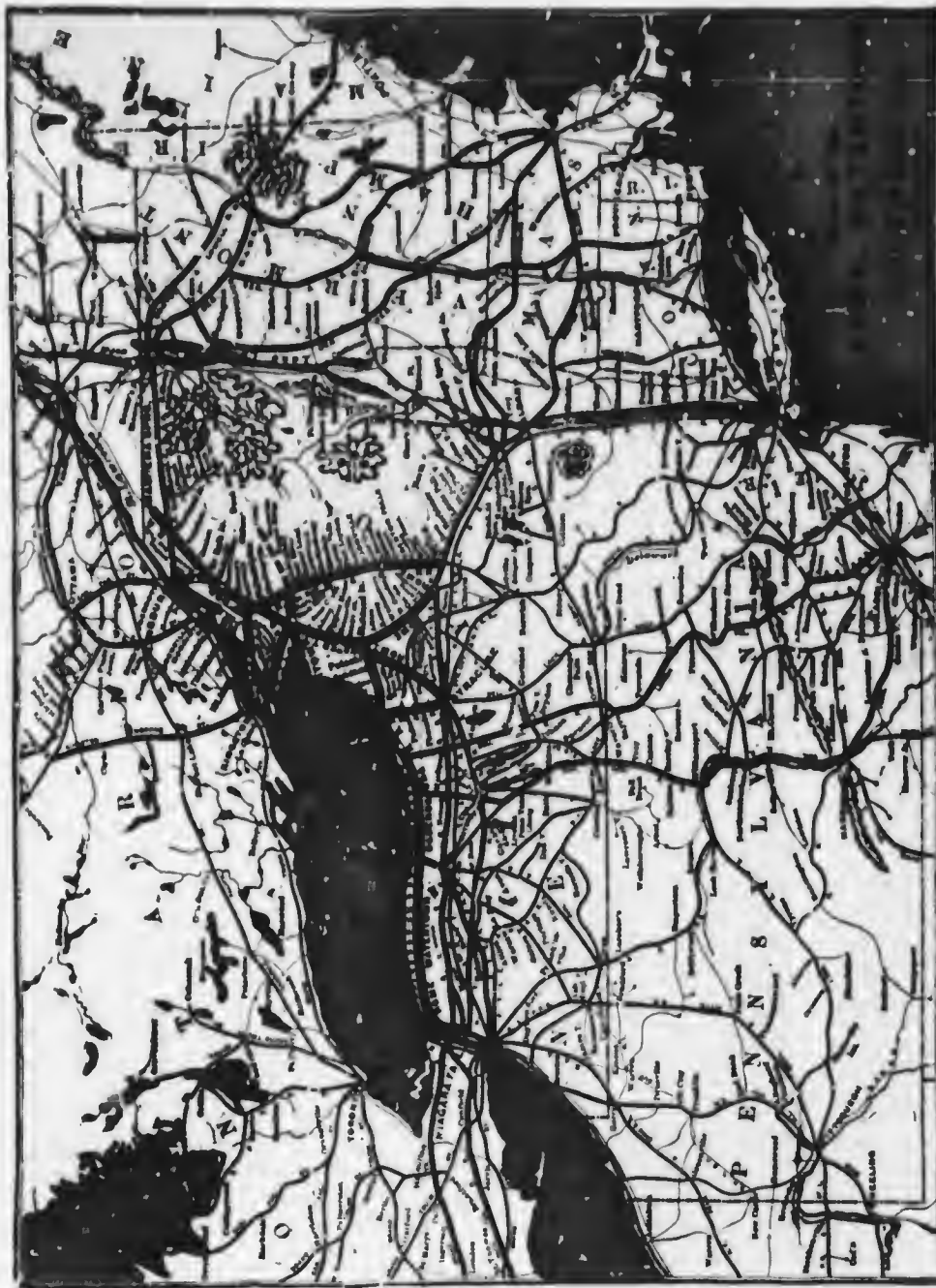
For RATES, TICKETS and
RELIABLE INFORMATION,

APPLY AT

No. 4, International Hotel Block
NIAGARA FALLS, N. Y.

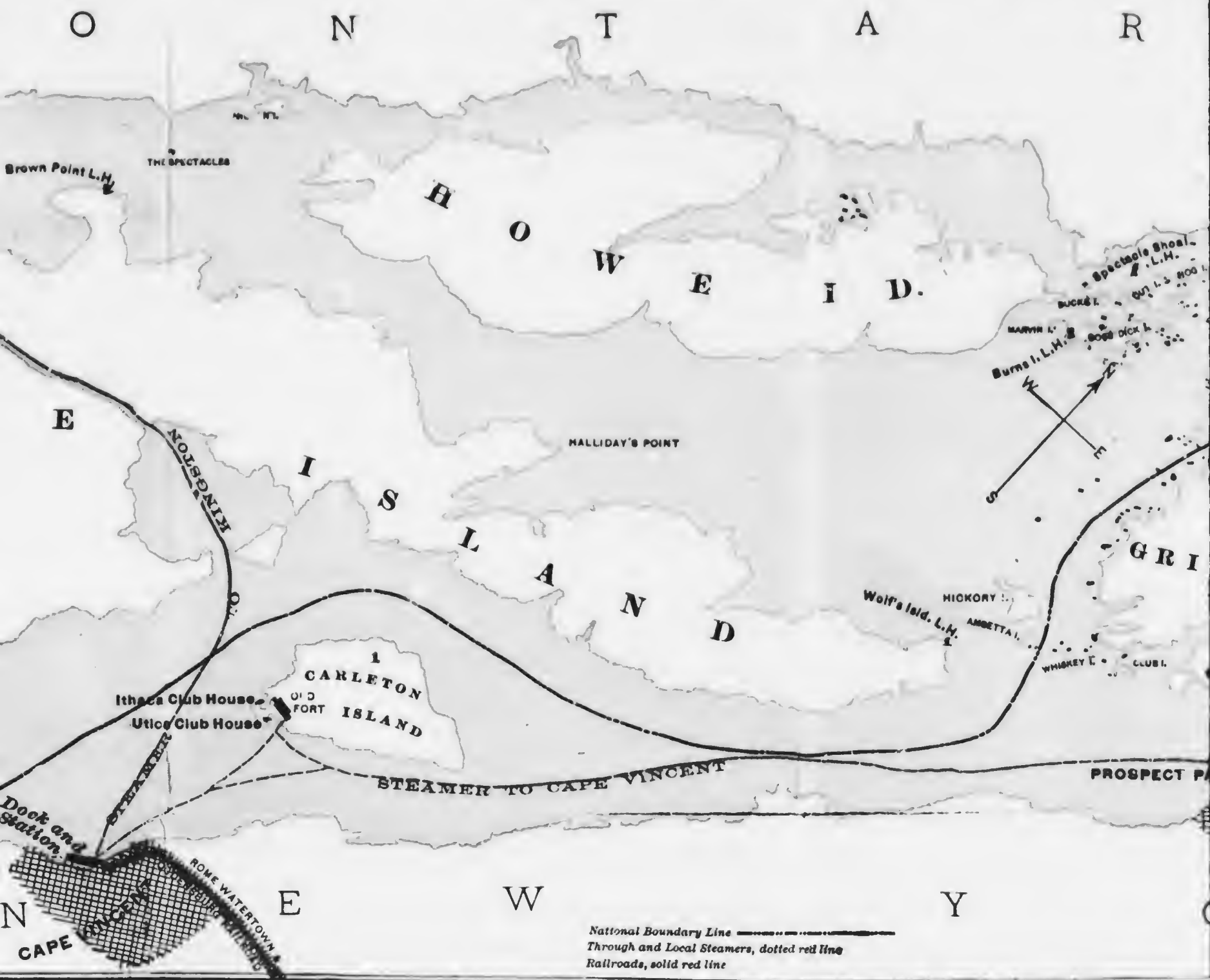
MRS. L. BARBER
TICKET AGENT.

**THE THOROUGHFARE FOR TOURIST TRAVEL
BETWEEN THE EAST AND WEST.**



**THE GREAT HIGHWAY FOR FASHIONABLE
PLEASURE TRAVEL.**





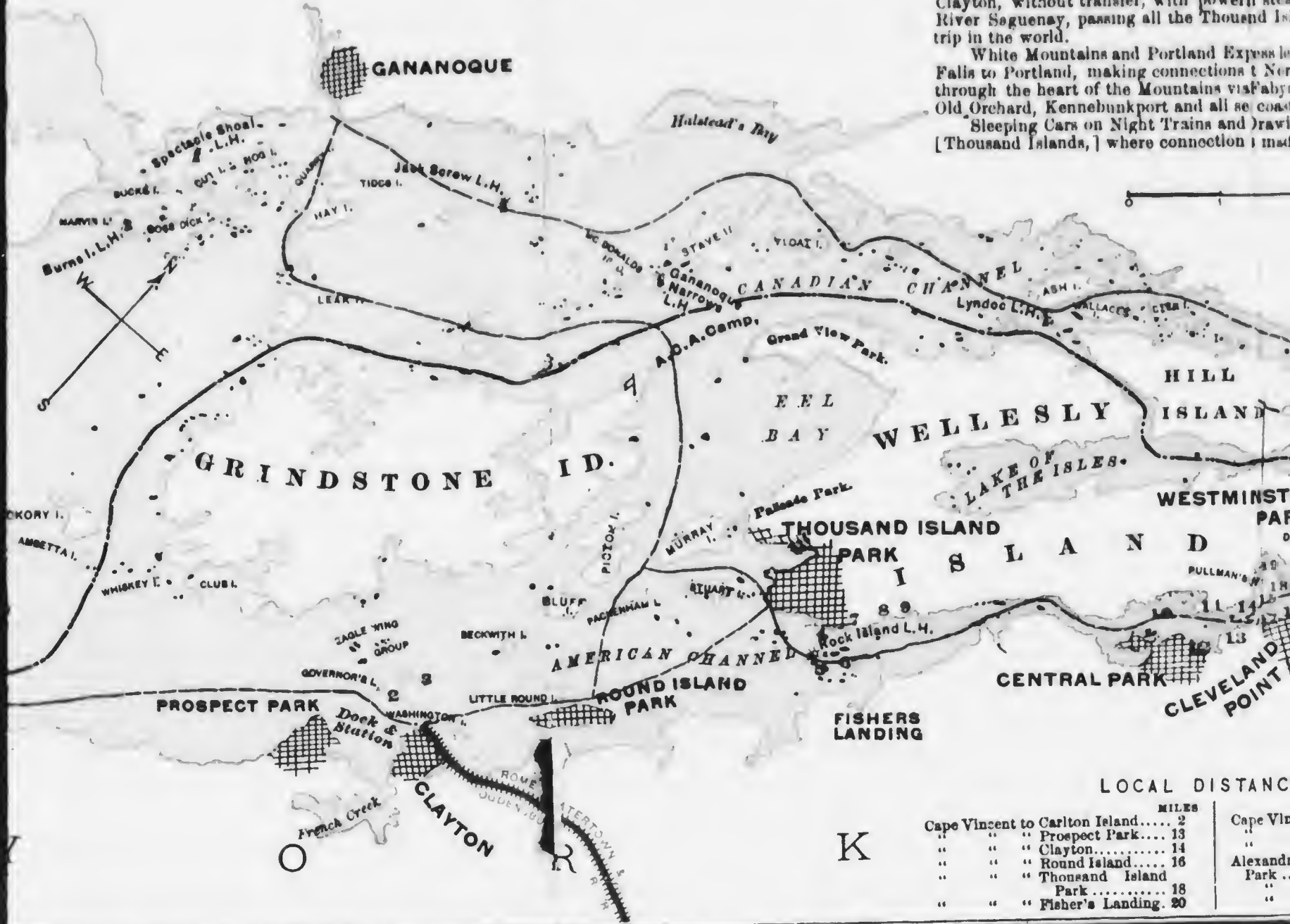
R I O

ROME, WATER TOWN
 THE ONLY
 THE GREAT HIGHWAY AND

Solid Trains with Elegant Sleeping Cars
 Clayton, without transfer, with power
 River Seguenay, passing all the Thousand Is
 trip in the world.

White Mountains and Portland Express
 Falls to Portland, making connections t
 through the heart of the Mountains via
 Old Orchard, Kennebunkport and all se coast

Sleeping Cars on Night Trains and
 [Thousand Islands,] where connection i made



LOCAL DISTANCE

	MILES	
Cape Vincent to	2	Cape Vincent
" " "	13	" Prospect Park
" " "	14	" Clayton
" " "	16	" Round Island
" " "	18	" Thousand Island Park
" " "	20	" Fisher's Landing

K

THE TOURIST'S IDEAL ROUTE. WESTMINTER & OGDENSBURG RAILROAD.

THE ONLY ALL-RAIL ROUTE TO THE THOUSAND ISLANDS.

THE SWIFTEST AND FAVORITE ROUTE FOR FASHIONABLE PLEASURE TRAVEL.

Sleeping Cars leave Niagara Falls daily 8.10 p. m. for Thousand Islands, making immediate connections at Alexandria Bay with the powerful steamers of Richelieu & Ontario Navigation Co. for Alexandria Bay, Montreal, Quebec and the Thousand Islands and running all the Rapids of the River St. Lawrence by daylight, the most attractive

and Express leaves Niagara Falls daily, except Saturday, at 8.10 p. m., with through Sleeping Cars Niagara Falls to Westminter Park for Massena Springs; at Moira for Paul Smith's and Adirondack resorts, and running through the White Mountains and Famous Crawford Notch to Portland, with immediate connections for Bar Harbor, and all the coast resorts of Maine. This train stops at all principal resorts in the White Mountains. Pullman and Drawing-Room Cars on Day Trains from Niagara Falls, Rochester, Syracuse and Utica to Clayton and Westminter Park. Connections made by all trains with Palace Steamer "St. Lawrence" for all Thousand Island Resorts.



DISTANCES.

	MILES.
Cape Vincent to Alexandria Bay	26
" " Kingston	10
" " Gananoque	15
Alexandria Bay to Westminter Park	1
" " Rockport	3
" " Central Park	2

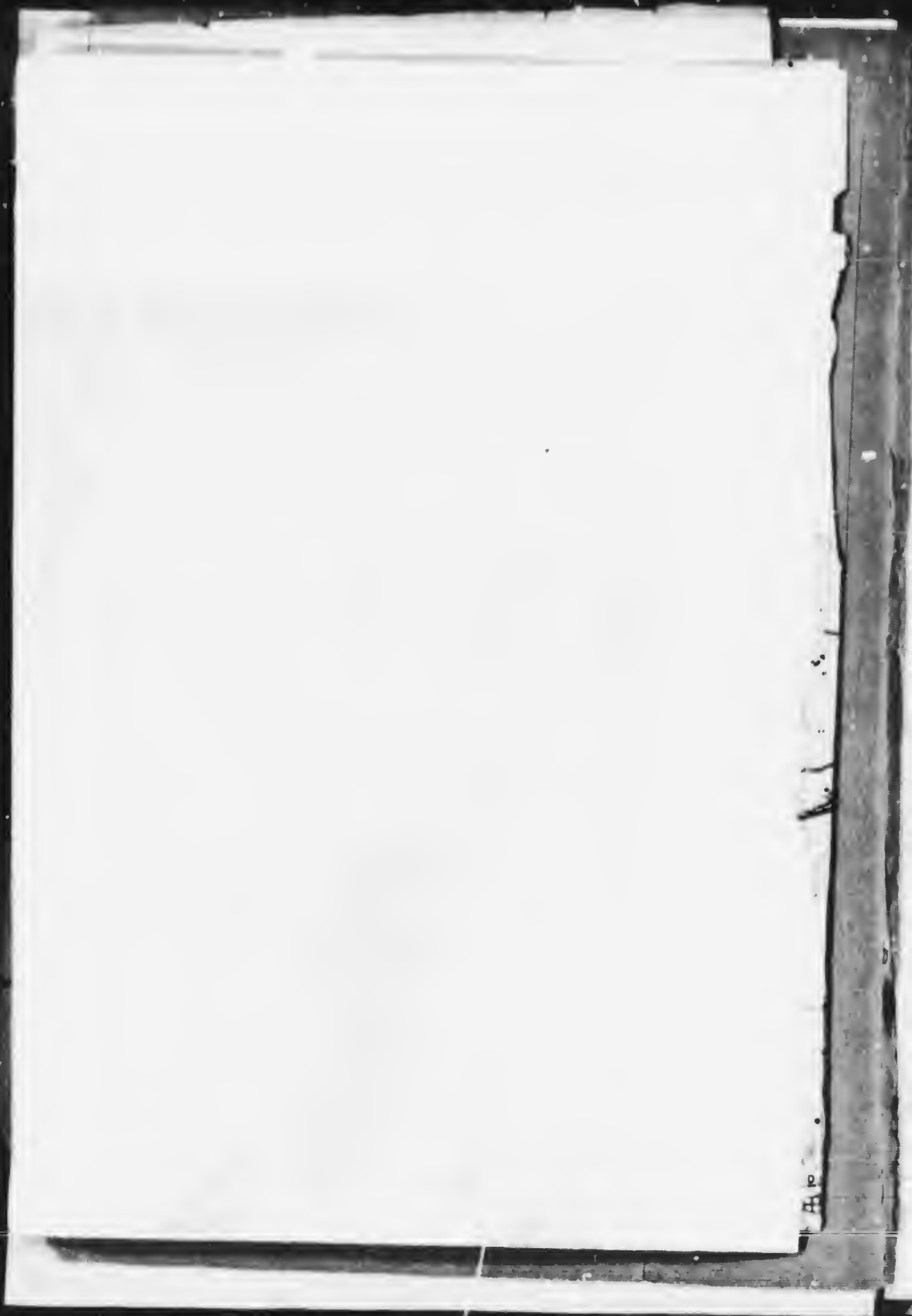
Names of Points indicated by Figures in Red.

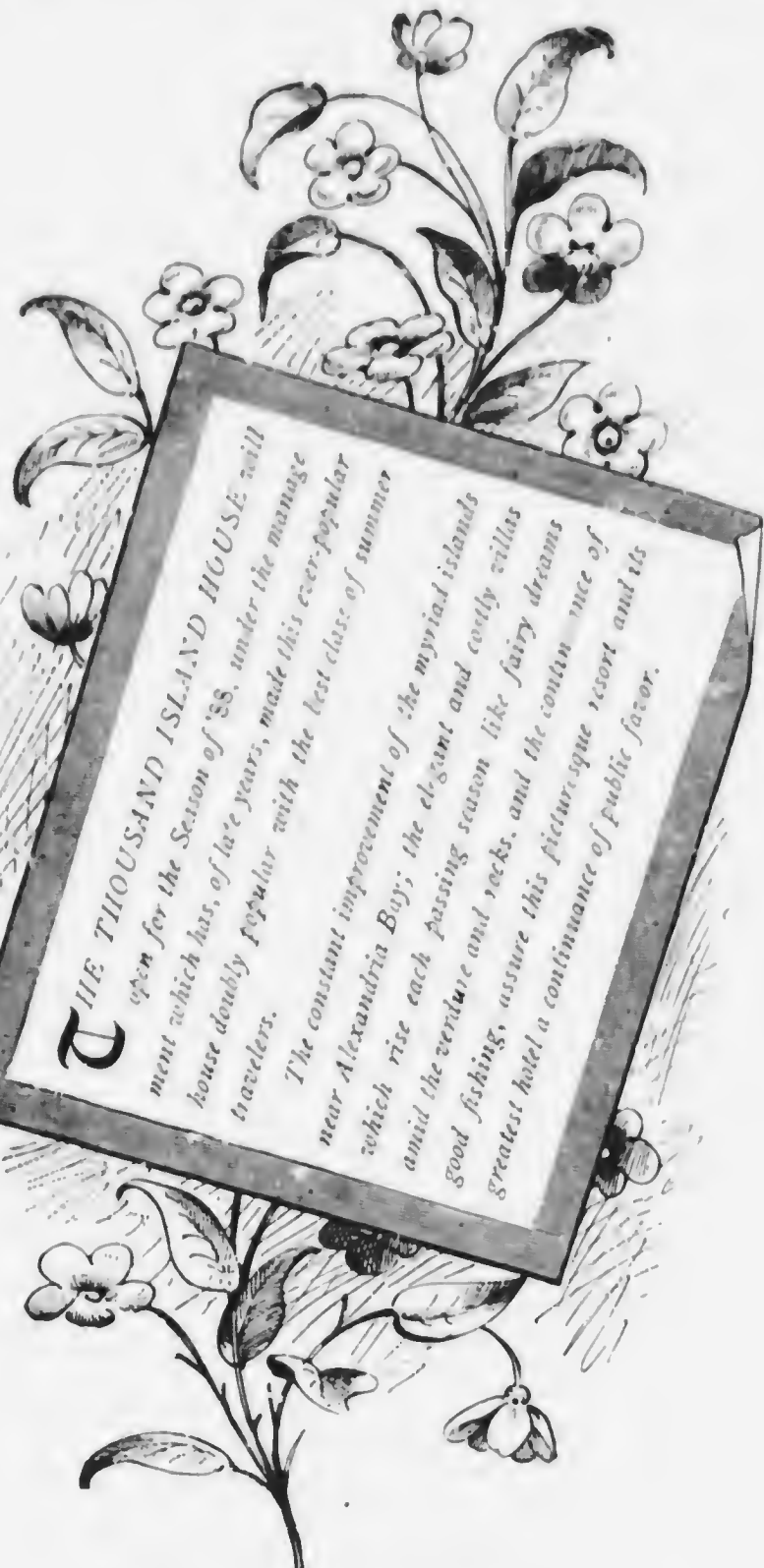
1. Carlton Island
2. Governor's Island..... Ex-Lieut.-Gov. T. G. Alvord.
3. Calumet Island..... Mr. Chas. G. Emery, New York.
4. Rock Island Light-House, head of American Channel.
5. Occident and Orient..... E. R. Washburn, New York.
6. Isle of Pines..... Mrs. E. N. Robinson, New York.
7. Frederick Island..... C. L. Fredericks, Carthage, N. Y.
8. Wellstey House.

9. Jolly Oaks. {
 - Rev. Goodrich, Lafargeville, N. Y.
 - Arthur Hughes, Stone Mills, N. Y.
 - Frederick Smith, Watertown, N. Y.
 - L. S. Alnsworth, Watertown, N. Y.

Names of Points indicated by Figures in Red.

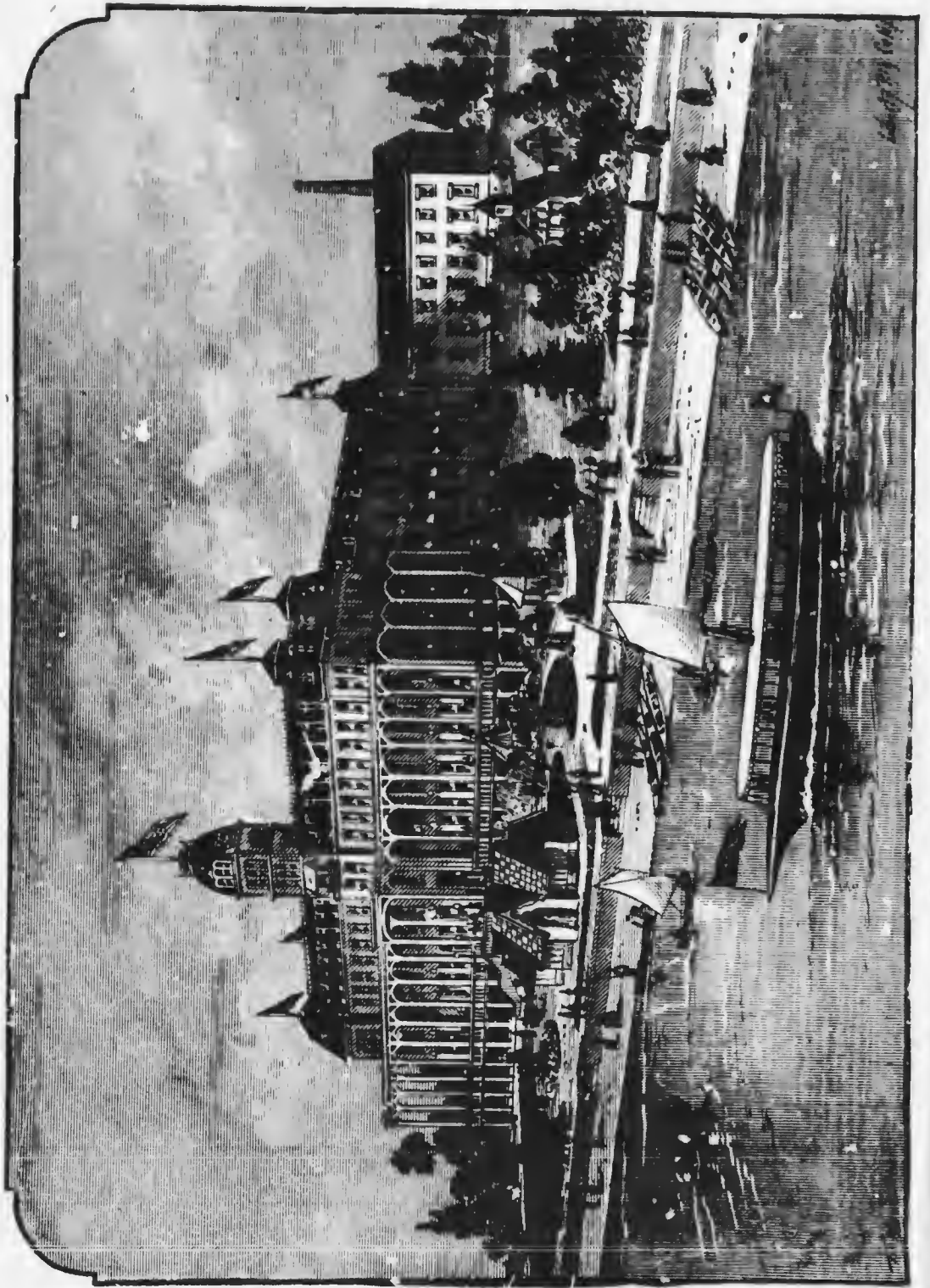
10. Island Royal..... Royal E. Deane, New York.
11. Seven Isles..... Bradley Winslow, Watertown, N. Y.
11. Point Vivian; Rezot Tozer, J. J. Kinney, Dr. Jones, Geo. Jones, William Cooper, and others, Stone Mills, New York.
13. Bella Vista Lodge..... F. J. Boeworth, Newport, R. I.
14. Comfort Island..... A. E. Clark, Chicago.
15. Warner Island..... H. H. Warner, Rochester, N. Y.
16. Cherry Island..... {
 - A. B. Pullman, Chicago.
 - G. B. Marsh.
17. Wau Winet..... C. E. Hill, Chicago.
18. Nobhy Island..... H. R. Heath, New York.
19. Welcome Island..... S. G. Pope, Ogdensburg.
20. Linlithgow Island..... R. A. Livingston, New York.
21. Bonnie Castle..... Holland Estate.
22. Isle Imperial..... Mrs. H. G. Le Conte, Philadelphia.
23. Point Marguerite..... E. Anthony, New York.
24. Sport Island..... Packer Estate.
25. {
 - Smmerland Group.
26. {
 - Manhattan Group.



A decorative floral illustration featuring a central rectangular text box with a double-line border. The box is tilted slightly to the right. The text inside is arranged in two paragraphs. The top paragraph begins with a large, bold, serif capital letter 'T'. The text is surrounded by stylized floral elements, including several five-petaled flowers and leaves, some of which are partially obscured by the text box. The background of the page is plain white.

THE THOUSAND ISLAND HOUSE will
open for the Season of '88, under the manage-
ment which has, of late years, made this ever-popular
house doubly popular with the best class of summer
travelers.

The constant improvement of the myriad islands
near Alexandria Bay; the elegant and costly villas
which rise each passing season like fairy dreams
amid the verdure and rocks, and the continuous
of good fishing, assure this picturesque resort and its
greatest hotel a continuance of public favor.



1000 Island
House
Season of '88

ALEXANDRIA BAY,

RIVER ST. LAWRENCE.

Thousand Island Hotel Co.

R. H. SOUTHGATE,
President.

Announcement.

SEASON OF 1888.

FROM JUNE 15th TO OCTOBER 1st.

The present summer inaugurates the sixth year of the present successful and popular management of the THOUSAND ISLAND HOUSE. The many radical improvements for the greater comfort of the increasing patronage which have been already effected, will be still further increased this season; especial care for the entertainment of family parties being a leading object.

MR. R. H. SOUTHGATE will have the general supervision.

For the season now approaching, a general reduction of prices will take effect, especially during the months of June and September.

sti
all-
we
day

THE THOUSAND ISLANDS

AND THE

THOUSAND ISLAND HOUSE.

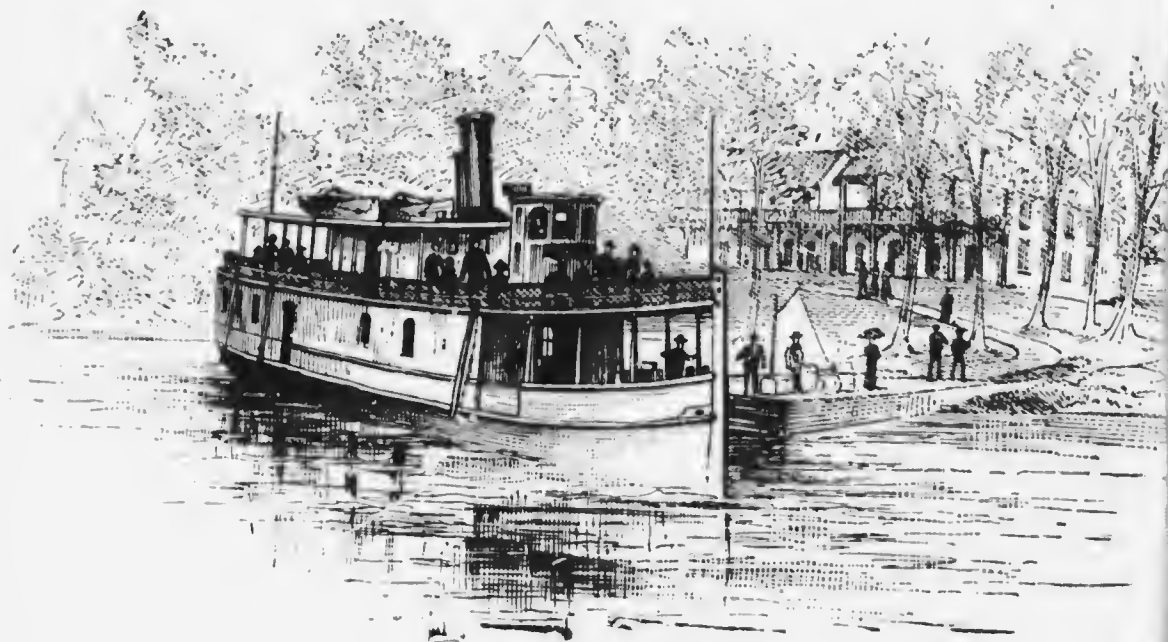


OF COURSE, in selecting a summer resort, the first attribute should be its health-giving attractions. That the St. Lawrence River, especially in the vicinity of the Thousand Islands, possesses these in an eminent degree, will be seen by the following comments from the pen of an able writer, who has spent many summers there :

The air is light, dry and mellow, and is adapted to the constitution of almost everyone, producing a kind of peace-with-all-the-world feeling, and endowing one with a new and wondrous activity. Fogs rarely occur here, and you can remain day and night out of doors without peril to health. Neither is

the night atmosphere damp and heavy, as it is near the sea-shore and at many of the island resorts. It is generally with tardy steps that one withdraws indoors at meal time or for the night.

There is a strange enchantment in the stilly mornings here. The city with its pressing cares, its hurry, heedless, and often heartless strife for supremacy, seems far away, and as unreal

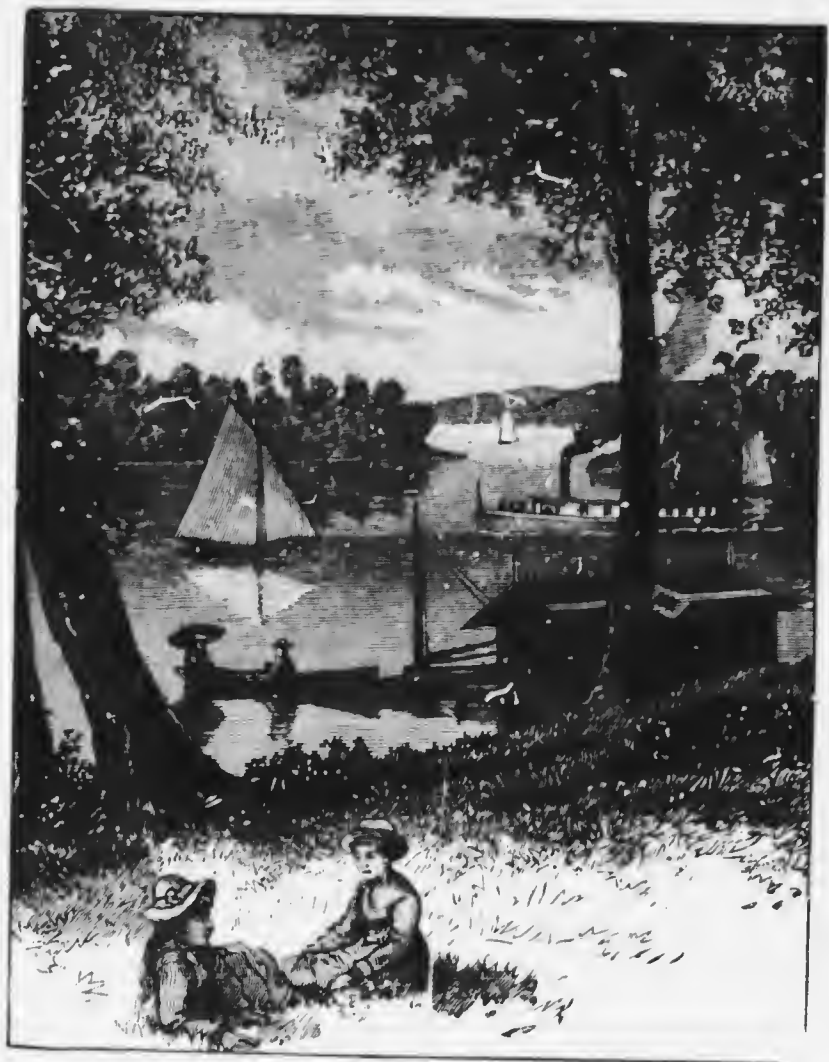


THE "MAYNARD."

as a troubled dream that is past. Sometimes the voices of Nature hint to us that here is the true life to lead, that all else is dross and a delusion. What more could the heart wish, indeed, than to live as the birds live, in perpetual summer, following with those one loves these still and restful mornings southward, dreaming still under their potent charm when mid-winter finds them smiling among the palm groves of the Bahamas?

There has been of late years a great annual increase in the numbers of those who saw the wisdom of laying down their

burdens for a time, with the assurance that when again taken up it would be with renewed energy, through which they might not



AN ISLAND VISTA.

only accomplish more of their accustomed labor, but would at the same time add to the terms of their lives. But last year this idea seemed to have become epidemic; indeed, it was almost a mania, and that man or family had to be either in very humble circumstances, or else very tightly bound by the ties of labor,

who did not, at least for a brief period, fly to the woods and the lakes, the mountains and the streams, the sea-shore and the rural home, to breathe in from Nature's own scenes new powers for the future.

For these reasons it is now a common topic around the family hearth, through the winter and spring, to decide what will be done for enjoyment during the regular summer respite. This question is now-a-days not so difficult to decide as it was a few years ago. The matchless beauty of the scenery of the Thousand

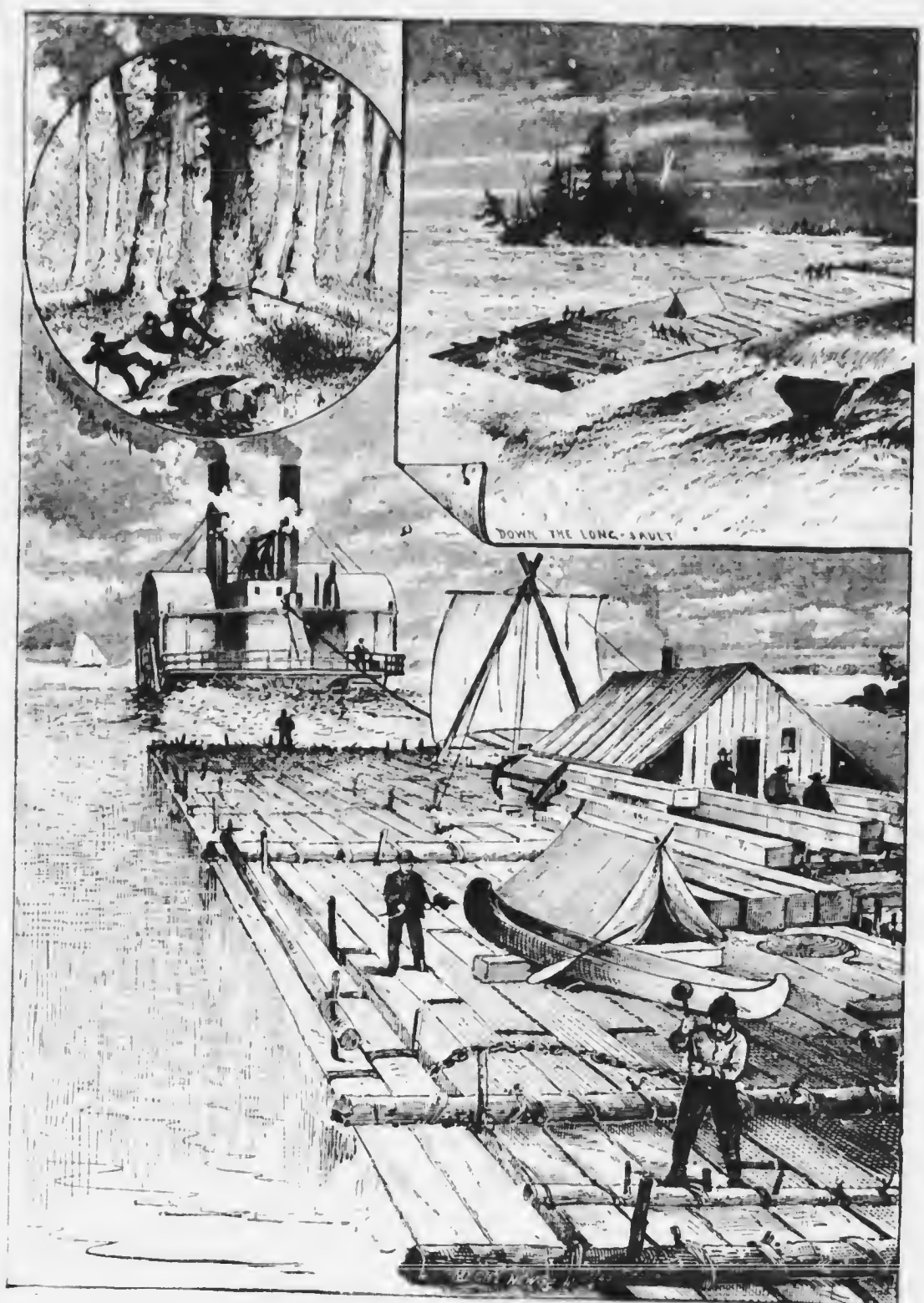


AN EVENING SPIN.

Islands and the St. Lawrence River, its wonderful resources as a sporting locality, and the deserved popularity of the THOUSAND ISLAND HOUSE are now so well known throughout the whole country that it needs little discussion to turn the faces of all seekers after rest, health and recreation in that direction. It is now the popular Mecca for thousands of all classes of people, the numbers of whom are yearly increasing—people who seek the locality where they may spend any length of time amid the most romantic scenery on the continent, enjoy the most exciting sport, and at the same time secure any degree of comfort, from a tent on a wild island to a sumptuous room in the THOUSAND ISLAND HOUSE, one of the finest and most complete hotels to be found anywhere.

d the
the
wers
fam-
will
This
few
sand

as
ND
ole
all
t is
the
the
ost
ort,
ent
ND
nd



RAFTING ON THE ST. LAWRENCE.

There are no two sunsets just alike at Alexandria Bay. Each day brings some special beauty. The going down of the sun, as it sinks upon the green Canadian hills, realizes the finest phenomenon in nature, save only that of light itself. Whether the declining orb drapes himself with the purple and gold of a royal



"DEVIL'S OVEN."

couch, or sinks amid the tears and sackcloth, betokening a coming storm, he is always grand in his leave-taking. Men in all ages have contemplated this phenomenon with awe and admiration. It is then that the returning skiffs, coming in from among the rocky hiding places where they have trolled through the day, are seen in little silhouettes upon the silvery sheen of the flowing waters. Then the busy little steam yachts—and they are legion—go and come, cross and recross each other's pathways, leaving a phosphorescent trail of dancing wavelets in their wake. Far away the camp-fires begin to twinkle out of

Each
in, as
phe-
r the
oyal



om-
all
mi-
om
gh
of
nd
r's
ets
of

swift flight of rockets, which mount into the dome of heaven and, shattering there, scatter parti-colored stars far out upon the silent tide.

The delightful evening life of midsummer here—that part of the day between six o'clock, and, yes, I will record it, midnight—is not to be ignored. It is, indeed, the social quarter of the day.

Each diurnal exhibition closes with a new picture, a drop-curtain to the real and fleeting present. Just as the clustered prisms of the kaleidoscope can never reproduce the design once disturbed, so no sunset once faded will ever have its counterpart. The gradual transition from day till dusk, and dusk to night, is found nowhere more charming and perfect than among these, our islands. Then it is that the far away booming of the coming steamer's paddles may be heard far down the American Channel, long before her twinkling lights peep out beyond the light-house. Then the merry laughter of happy crews that floats through the midst of the mellow sunset tones, comes to us who loiter beside the mossy banks. Then the big bull-frog which has kept us awake half the nights in June, still mocks us with his complaining about the cold in his head, and sweet farm-sounds reach us from the weather-beaten houses upon the mainland.

“Many a time have we, after retiring to our bed, opened the blinds and windows of our room so as to obtain one more view



A ST. LAWRENCE TRIBUTARY.

of Nature in her evening dress before closing our eyes for the night."

DOWN THE ST. LAWRENCE.

JOHN ALBRO.

O, would I had the poet's pen to-day
 To paint, with words as glowing as the sheen
 Of thy fair waters, what thy beauties are ;
 Or with a master's pencil trace one scene
 Of all thy varying waters' shimmering play
 To aid remembrance when from thee afar.

A thousand lovely emeralds deck thy breast,
 With dun-edged settings, faintly lining out
 Fair substance twinned with shadow no less bright :
 Nature's fresh lips divided by a pout
 At whom could pass nor seek a moment's rest
 Amid her tranquil bowers of delight.

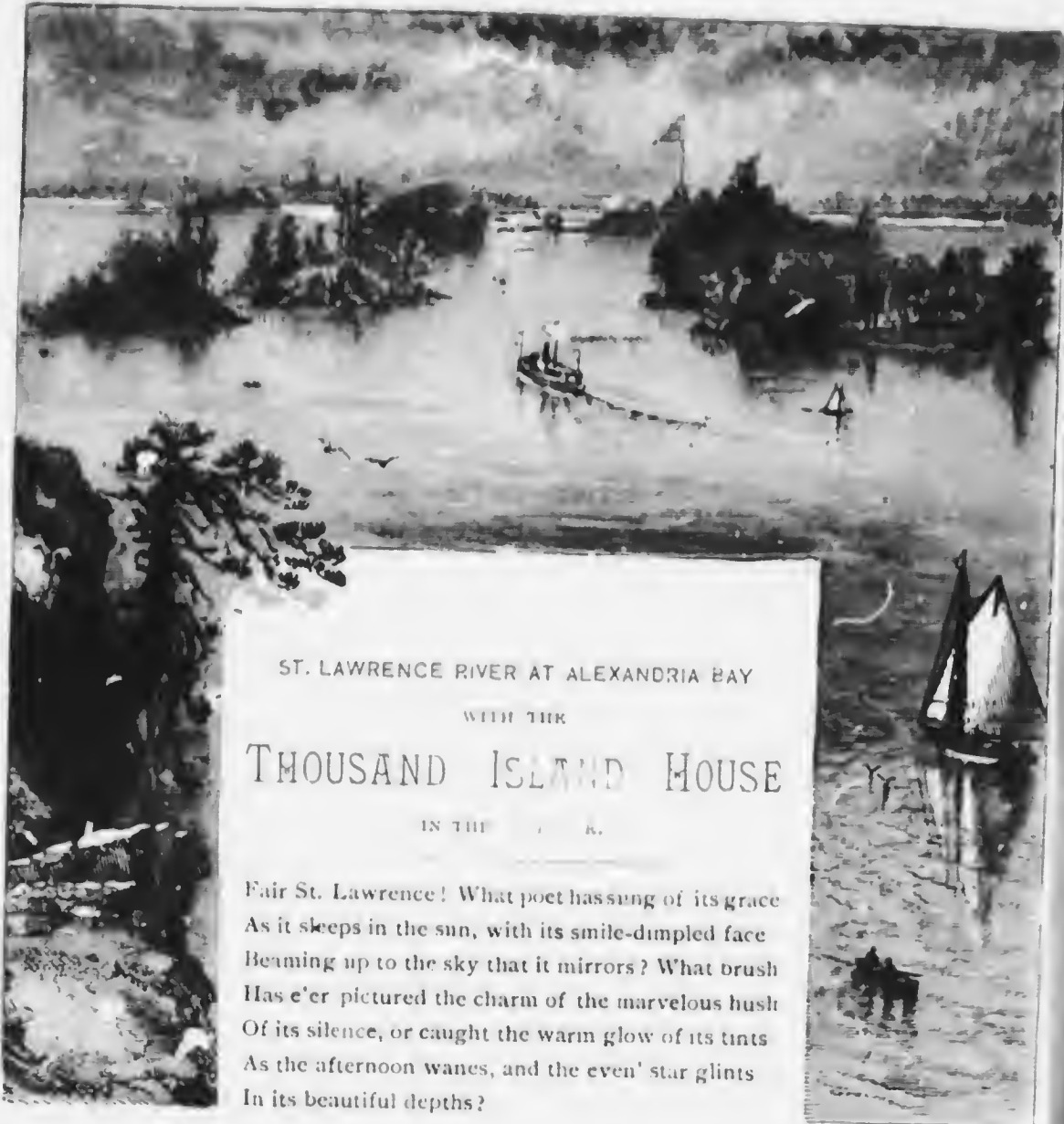
O, endless waste of waters ; like a Life
 Ye roll on calmly or with maddened haste,
 But ever drawing nearer to your goal ;
 Ofttimes with eddying efforts that but waste
 In indirectness or ungainly strife
 The strength and current of the ebbing soul,

Not here, among these fair and rich robed isles,
 We think of great Niagara's swirling hell
 Of waters, where these ripleths had fierce birth ;
 Not here, amid the silver dimpled swell
 Of tiny waves, all crest adorned with smiles,
 Ocean's Eternity may check their mirth.

To be alone here were to be with God :
 To isolate a season free from man.
 Nature's uncalendared sweet Sabbath day
 Were fitting time and place to introscan
 That moral Sphynx, concrete of soul and sod,
 Call'd Self, and of it catch some glimmering ray.

* * * * *

The throbbing steamer's bold reality
 Recalls the plodding Present; in her wake,
 Straight-ribbed and fading, errant Fancy's wiles
 Float free abaft; departing, yet shall take
 This benison to ideality —
 God bless Saint Lawrence, and her Thousand Isles.



ST. LAWRENCE RIVER AT ALEXANDRIA BAY

WITH THE

THOUSAND ISLAND HOUSE

IN THE

Fair St. Lawrence! What poet has sung of its grace
 As it sleeps in the sun, with its smile-dimpled face
 Beaming up to the sky that it mirrors? What brush
 Has e'er pictured the charm of the marvelous hush
 Of its silence, or caught the warm glow of its tints
 As the afternoon wanes, and the even' star glints
 In its beautiful depths?

The Thousand Island House.

ISLES OF BEAUTY.

JOHN ALBRO.

WHEN Nature formed the chain of lakes
Whose final volume eastward breaks
Into the all-absorbing deep,
That with a continental sweep—
As proud and free, as bold and grand
As is the genius of our land—
She wrought with magic inter-act
Niagara's mighty cataract.

Moved then by fancy's cunning wile,
Between her moods of frown and smile,
She formed that glowing poet's theme—
Saint Lawrence's ever-changing stream.
Fair river of a Thousand Isles,
Whose rippling wave in gladness smiles
While murmuring by rich emerald gems
Close set in floating diadems.

Here Beauty's seal, by Nature set,
Through all the summers lingers yet.
Adown the cycles Beauty's beams
Illume this loveliest of streams.
O, River! like a life ye glide
Still onward to the ocean tide;
Your isles of youth and joy we find
Too soon, alas, are left behind.

THIS "GREAT SUMMER PALACE" and its immediate surroundings, will ever be the central point of interest to all who turn their steps hitherward. Its beautiful location, easy accessibility to the best fishing grounds of the river and islands, conspire to render it the most attractive point on the whole river. Its grand and imposing front, topped by a beautiful tower 160 feet in height; its acres of pillared verandas, filled with joyous throngs; hundreds of laden boats and yachts, stirring the crystal waters into waves, all create a vision not easily forgotten. The site of the THOUSAND ISLAND HOUSE commands many of the grandest views of the river in both directions, that are gained from any point, while from its airy tower the eye takes in a vision which for extent and variety of scenery is rarely equaled. To those who have never been guests at this house, some statistics concerning this king of all summer-resort hotels will be interesting.

ITS DIMENSIONS.

The main building is 276 feet long and 66 feet wide; the eastern portion is five stories high and the western four stories, this difference being occasioned by the uneven lay of the rock on which it is built. From the centre of the main part, a wing of the same height and 40 feet wide, extends back 100 feet. A tower, 24 by 27 feet, rises 160 feet above the foundation. Under the east end is a natural cellar in the solid rock, 150 feet long. Since the season of 1880, a new building has been erected, separate from the hotel, for the use of servants; its length is 135 feet.

FIRST FLOOR.

On this floor, constituting the east end story before mentioned, are the office, reception and reading-rooms, bar-room, billiard-room with six tables, telegraph office, barber shop, wash-room and bath-room; the whole being 100 by 50 feet.

SECOND FLOOR.

Here are the grand hall from the entrance, two reception-rooms (the largest being 40 by 50 feet), a private dining-room, parlors, bedrooms and bath-rooms; a hall 10 feet wide extending from end to end and opening on the veranda, and in the wing the public dining-room, 100 by 40 feet, and 27 feet high.

Each of the other floors are partitioned into parlors and comfortable rooms for guests, with halls, bath-rooms and water-closets. The elevator, Otis Bros.' make, known to be the safest in the world, runs from the first to the fifth stories of the house. Power for the elevator is supplied from one of the New York safety power engines.

A GRAND PROMENADE.

The veranda, connected with the long hall on the first floor, gives a promenade 624 feet in length, the veranda portion being 374 feet, and the hall 250 feet.

THE ACCOMMODATIONS.

The hotel will accommodate about 500 guests. Those who stop here will find the rest, comfort and attention which they seek in going from city to country, and every facility will be afforded them for seeing and enjoying the rare scenery and varied amusements of the river and islands. No employees will be retained in the establishment who prove to be incompetent, negligent or discourteous. Families and parties can be accommodated with desirable suites of rooms at reasonable prices, with private dining-rooms if desired.

BOATS AND BOATING.

The splendid boats of Alexandria Bay have won an extended reputation. They are beautiful craft, and it is not only delightful to row among the islands and upon the smooth waters of



the bay, but it is, as every one knows, a most healthful exercise. Guests of the THOUSAND ISLAND HOUSE will find at their dis-



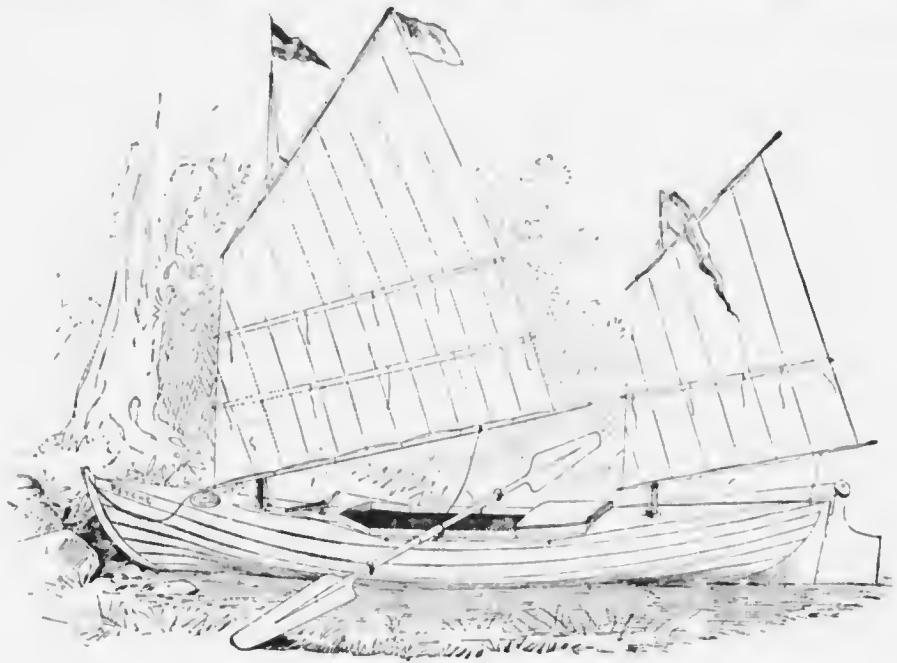
posal this season more than three hundred boats, and careful and experienced boatmen can always be engaged at from two to three dollars a day.

SPORTING.

We must not omit to mention the entertainment to be found here, which is much like the Chinaman's national beverage in that it cheers but does not inebriate; gives that healthful rest which never comes so surely from entire physical inactivity as from change of scene and laying aside the routine of daily occupation for something that interests while it does not exhaust from excessive mental strain.

In front of the hotel the boatmen are busy with their boats stowing away all of the concomitants of a day's fishing, according to the ethics of the region. Each boat contains two besides the oarsman. Early breakfasts are in order for those who are going fishing. Let us make ready for the day's sport!

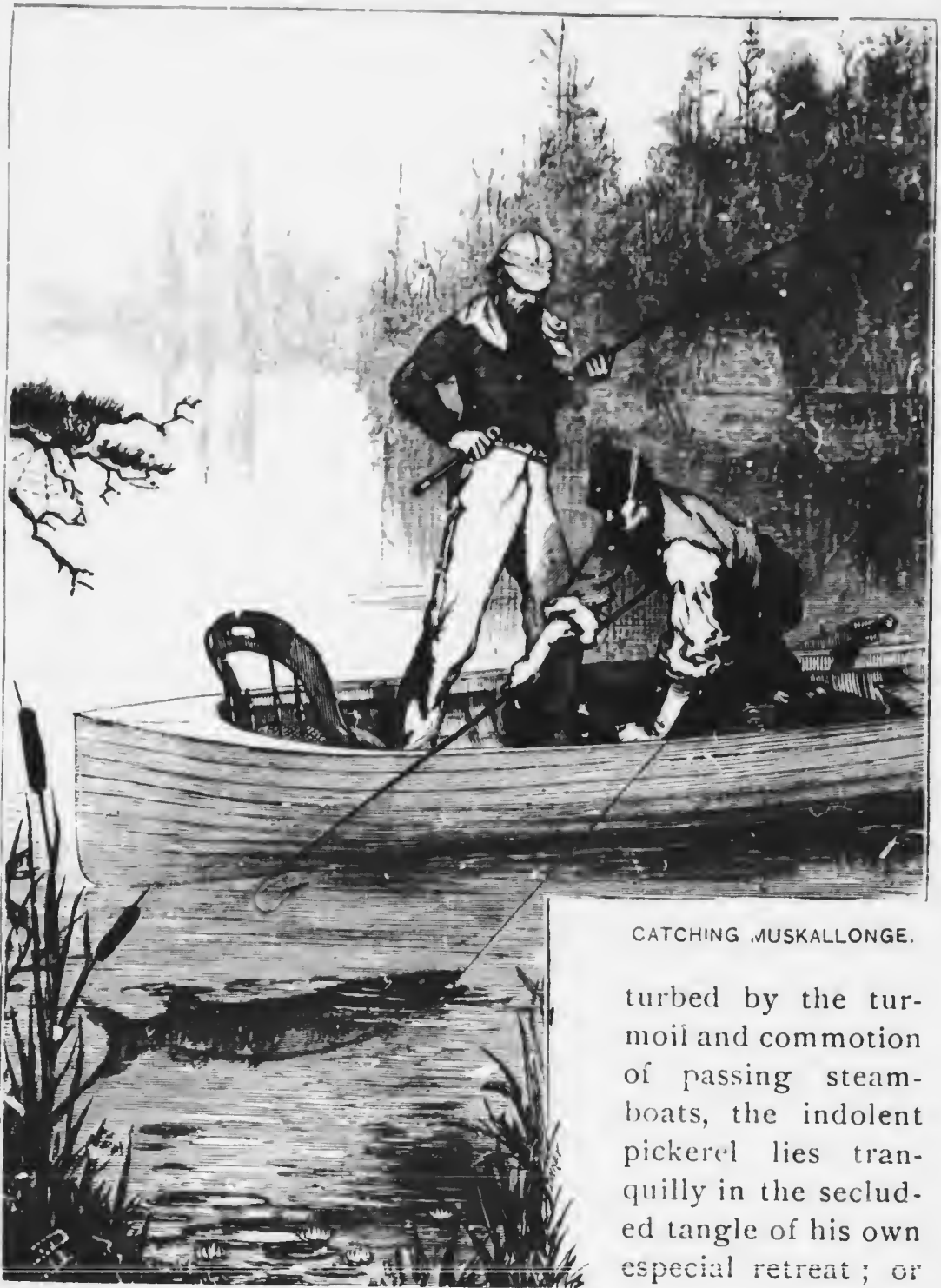
We have both "fishing and hunting" here, as one has written. Fishing, of course. It is a good day. The water is still, and there is a thin veil of clouds in the sky. We knew it was hot elsewhere, but it is not here. We start off, a merry group of boats. We row in and out among the islands and find our "ground" at three miles' distance. Bass, pickerel, wall-eyed pike, muskallonge! They come from exhaustless breeding and feeding grounds and will always be there. On a lazy afternoon,



CANOE—FULL RIGGED.

we throw or troll our flies around the islands directly in front of the hotel. There are places within fifty rods where we can hardly throw a fly without getting a "rise." We see every day fine black bass that are taken from the dock by waiting fishermen within the toss of a biscuit from the window where we write. Of a fishing trip down the river below Grenadier Island a literary sportsman has graphically written:

"There, in the most shallow portion of the river, striped with beds of the long water-grasses, green, purple and gold, undis-



CATCHING MUSKALLONGE.

turbed by the turmoil and commotion of passing steamboats, the indolent pickerel lies tranquilly in the secluded tangle of his own especial retreat ; or

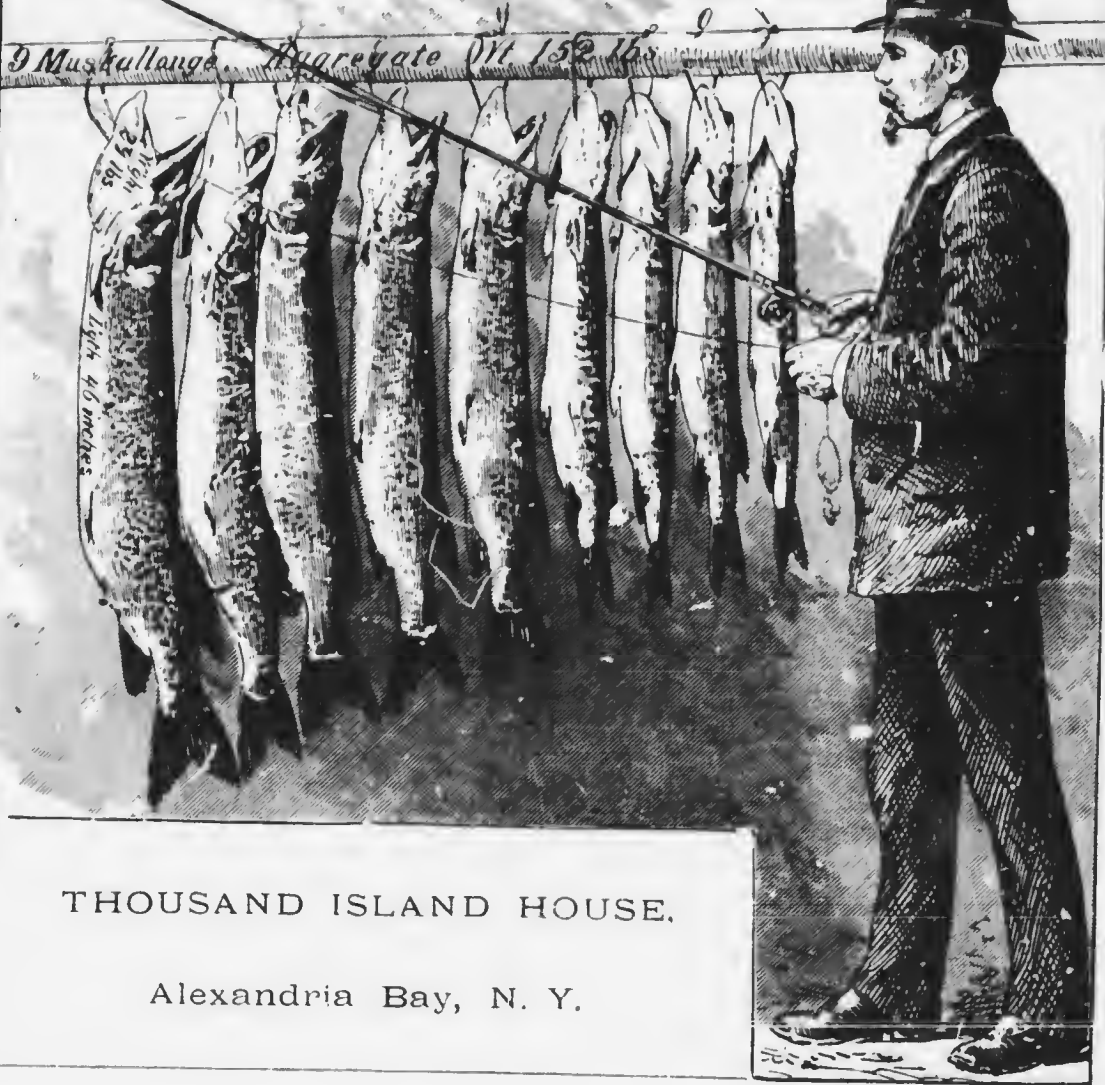
written,
l, and
s hot
up of
our
-eyed
g and
noon,

front
can
day
her-
e we
and

with
dis-

RESULT OF
A Day's Fishing
 At
ALEXANDRIA BAY

BY A GUEST OF THE THOUSAND ISLAND HOUSE



THOUSAND ISLAND HOUSE.

Alexandria Bay, N. Y.

huge black bass, reaching sometimes the weight of five or six pounds, stand guard along the edge of the grass waiting for some unwary minnow or perch to pass. At intervals are spots where the savage muskallonge, the tiger of fresh water fish, lies hidden in the water-grasses in solitary majesty. Sluggishly he lies, with his savage eyes to the right and left of him watching for his prey. He sees a minnow in the distance, apparently twitching and wriggling in the most eccentric manner; a moment the monarch poises himself with waving fins, then a sudden sweep of his majestic tail, and he darts like a thun-



INDIAN BASKET MAKERS.

derbolt upon his intended victim. The next moment the sharp agony of the fisherman's hook is in his throat, for a moment he lies in motionless astonishment; then, as he feels the lines tighten and discovers he is indeed caught, he struggles with rage, making the waters eddy and swirl with a

sweep of his powerful tail, causing the rod to bend almost double. Again and again he is brought to the side of the boat, only to dart away once more, until at last, sullen and exhausted and conquered, he lies motionless in the water beside the victo-



TRAWLING ON THE ST. LAWRENCE.

rious fisherman's skiff. A moment more and then the gaff strikes his side and he is landed safely in the bottom of the boat. *Hurrah! a twenty pounder!*"

THE BOATMEN.

Taken altogether the St. Lawrence boatman is a good fellow, being temperate, honest and capable, full of dry wit, and a fund of amphibious experience worth the hearing. He thinks for himself, and clings to the tradition of his calling with proud tenacity.

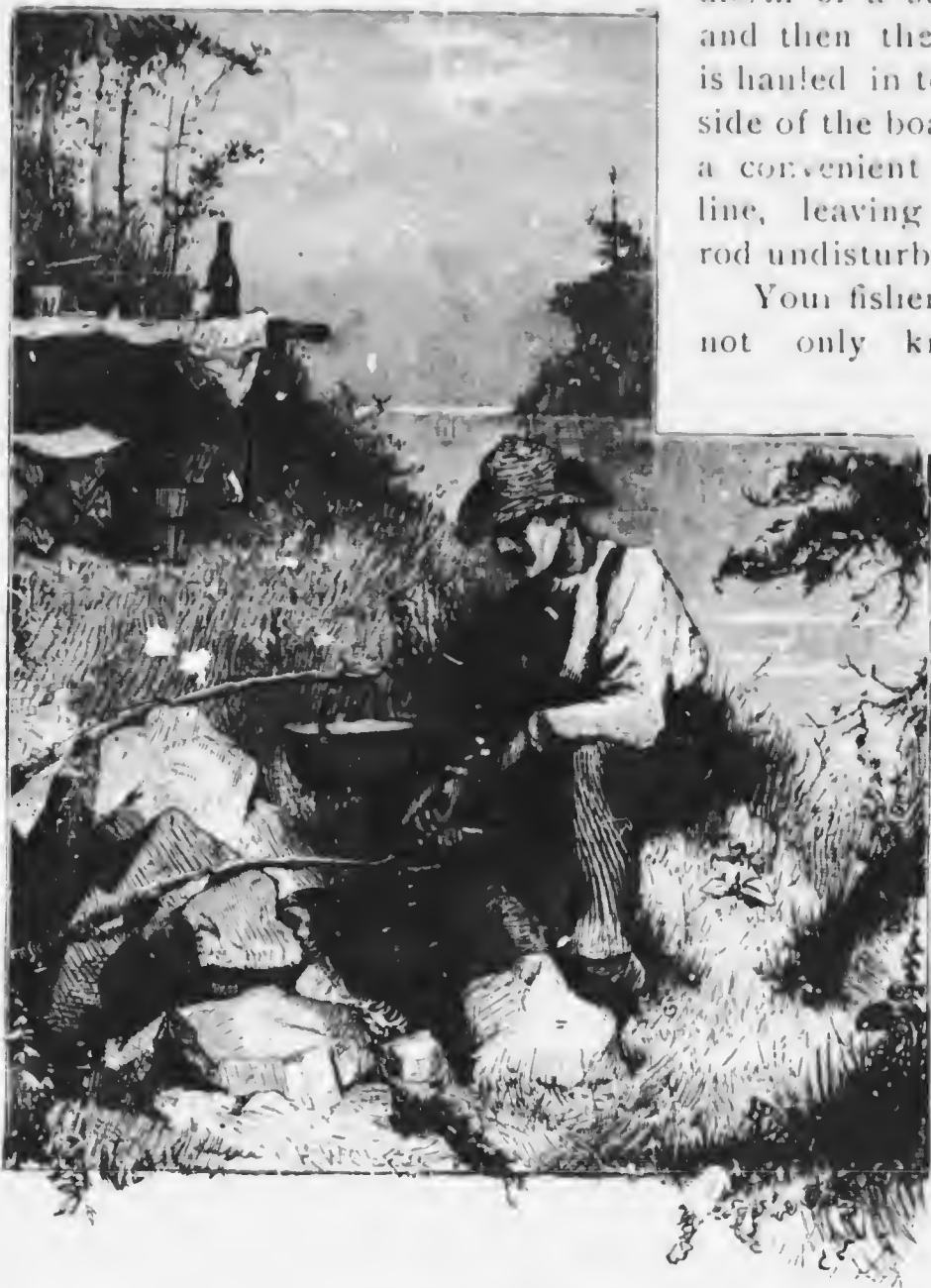
There is nothing of the hackman about him. He has a uniform charge of three dollars per day for his services and boat, and can give you far more than your money's worth—and he knows it.

Fishing and especially trawling, hereabouts, ought to be the very essence of happiness for the lazy man. For his especial comfort is the legless arm-chair in the stern. To save him the

Most trouble of twisting his neck in looking after the lines that trail from the ends of the two set rods, twenty feet apart, little bells are cunningly depended from the tips of the rods to give the

alarm of a strike, and then the line is hauled in to the side of the boat by a convenient gny line, leaving the rod undisturbed.

Your fisherman not only knows



COOKING A CAMP DINNER.

where and how to get the piscatorial prey, but as well how to cook and serve them when he has landed his party in some secluded nook for the noonday lunch. From the inner depths of the boat come forth a surprising array of cooking utensils, and even a folding-table and camp stools to match are forthcoming. Coffee, pickles, cold meats, and minor sorts of condiments, not forgetting, if you please, a bottle of liquid comfort, and some smoking tobacco; these make up the visible evidences of a day of perfect content. The atmosphere, and the unconventional bending of all to the abandon of the hour, do the rest.

Other boats have come in to the common rendezvous, and now we may behold him of the cloth who gives our Sunday discourse in the hotel parlor, busy in scaling a pickerel under the mentorship of his oarsman, while the legal, medical and artistic professions are deployed in search of dry-wood wherewith to build a fire, and all this purely as volunteer help, for the genuine boatmen would attend to it all if you could but wait with patience.

The lazy man has been surprised into action for once; perhaps it is because he is so hungry.

In the early spring, when the shallows of Eel Bay or other sheets of water of the same kind become free from ice, the water, not being deep, becomes warm much more quickly than elsewhere, and here the half-frozen fish congregate in great quantities. The professional fisherman in the bow of the boat holds a spear, in shape like a trident, but with an alternate sharp iron prong between each barbed shaft, the whole fixed upon a long firm handle. Immediately upon seeing a fish he darts his gig at him, fixing the barb so effectually in his victim that to strike is to capture him.

Eel spearing is usually pursued in the night, not only because the water is usually more quiet than during the daytime, but also because the light of the blazing pine chunks in the jack or

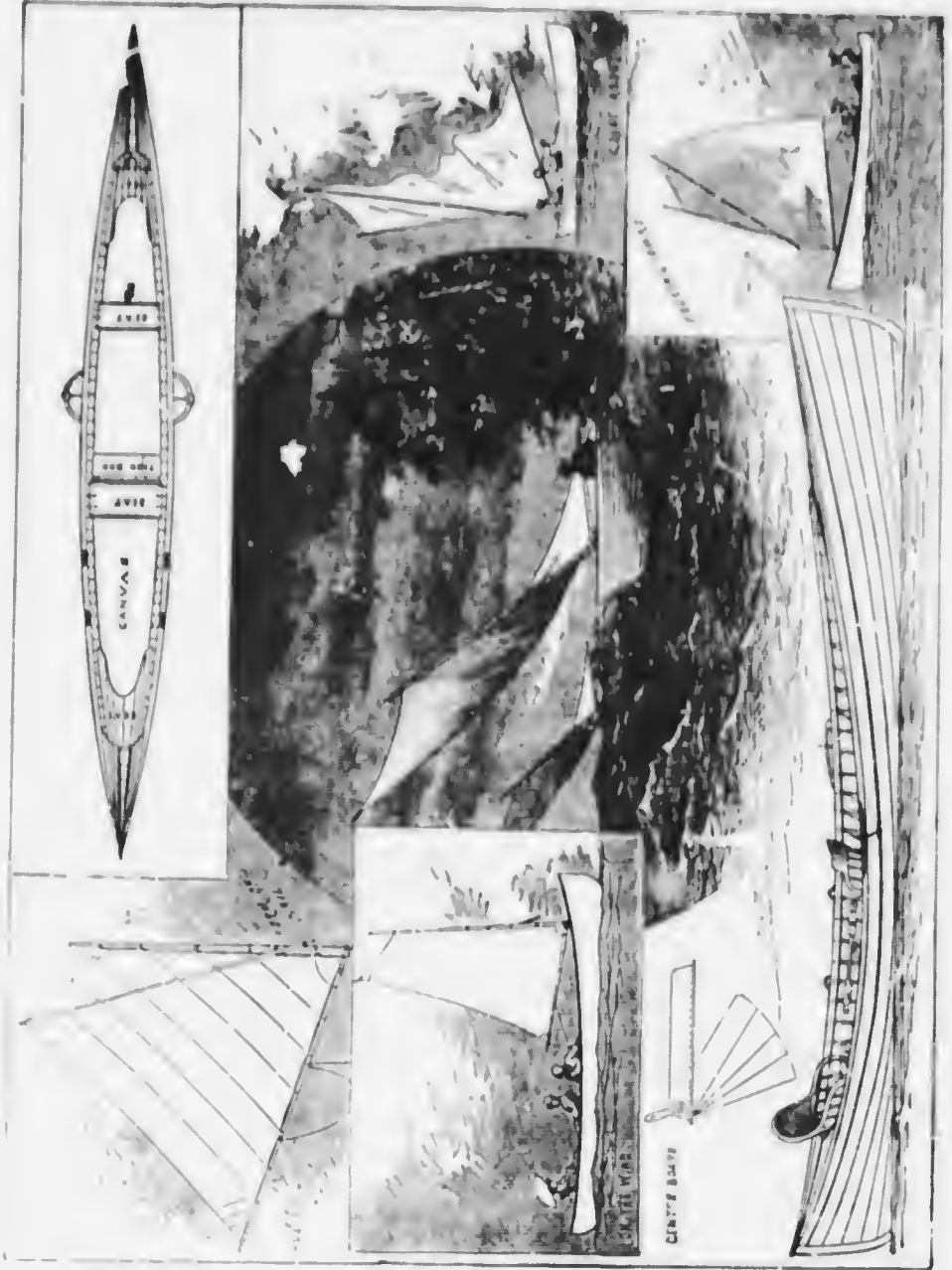
open brazier in the bow of the skiff makes objects on the bottom more apparent by contrast with the surrounding gloom.

There are no better trolling grounds in the country for black bass, pickerel and muskallonge than those among these island groups of Alexandria Bay. The bass fishing is best from the 15th of July to September. The muskallonge period is between May 15th and July, although this most delicious of fresh-water fish is often caught later. Pickerel are caught all the season; that is, from early summer until the middle of autumn.

In their season the wild duck swarm in countless numbers in this region, and though not so numerous it is no uncommon thing to hear the whir-r-r of the partridge as it rises from its nesting place at your approach.



Point "Marquerite"



ST. LAWRENCE SKIFF

PICNICKING.



One cannot imagine a place better designed for the complete enjoyment of picnic parties than the Thousand Islands; not a pleasant day during the season but witnesses the departure of numerous parties of this sort from the hotel or surrounding points; huge luncheon baskets filled with "good things" from the "larder" of the THOUSAND ISLAND HOUSE are carried aboard the little steamers, which with their train of row-boats, each with its oarsman and fishing tackle, lie puffing and panting off the dock, waiting to take on board their merry load, when they are off for the day. Ladies are always ardent lovers of this sport and are generally very successful.

A visitor says:—"We would like to ask why an inexperienced girl with an old, stiff rod, without a reel, and with a coarse linen line, can catch more fish and better ones than we can with a split bamboo, a silk waterproof line, and six feet leader?" This is what we would like to know. Do the fish discriminate? Do they say as they see the rare tackle coming down to them, or reflected in the water: 'There's an old fellow at the end of that rod as full of piscatorial science as an egg is of meat—a man to be avoided; but here is a girl who is innocent of bass or guiltless of pickerel?'" It must be so. Plato, thou reasonest well. At any rate there is a two-pound bass on the

maiden's hook, and not a man has had a bite. The bass is taken in and down again goes the unsophisticated hook, plump to the bottom, and soon, while we are trying our scientific dodges, she pulls up with a feeble struggle the handsomest three-pound bass we have ever seen in the river. The men try to cover their shame by generous praise of the girl! So it goes on until noon, and then we go ashore on a "desert island," and the guide cooks our spoils for dinner. We lie on the grass and eat our fried fish with the edibles we have brought with us, and we

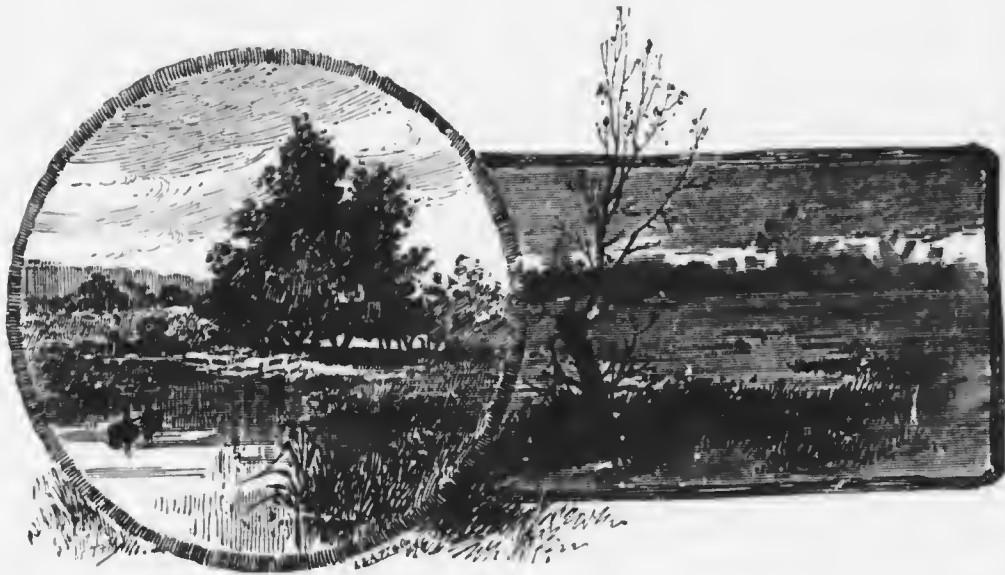


wash them down with the best of coffee, and, after an hour for digestion, we go for our game again. The excitements of the evening when the different parties come in with their day's catch are very delightful; and when a boat comes up or down the stream with a white flag at her prow, the excitement rises to enthusiasm. The white flag means a muskallonge!

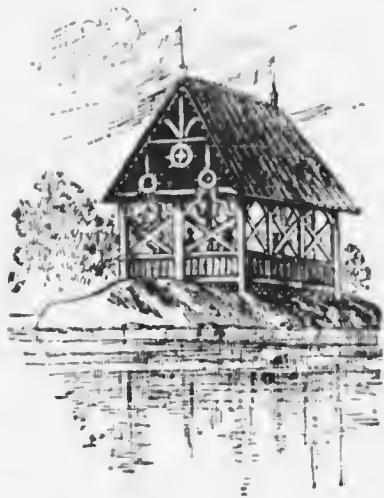
Indeed, there is scarcely any kind of innocent sport and pure enjoyment which may not be here indulged in with the most appreciative zest. Nature's most marvelous beauties and man's best works stands side by side—a condition of things always most desirable but seldom reached.

HAY FEVER.

Those afflicted with this terrible disease should lose no time in visiting Alexandria Bay, as it is unknown here.



Routes to the St. Lawrence River.



The village of Alexandria Bay is located upon the southern mainland of the St. Lawrence River, twelve miles below Clayton and thirty-six miles above Ogdensburg.

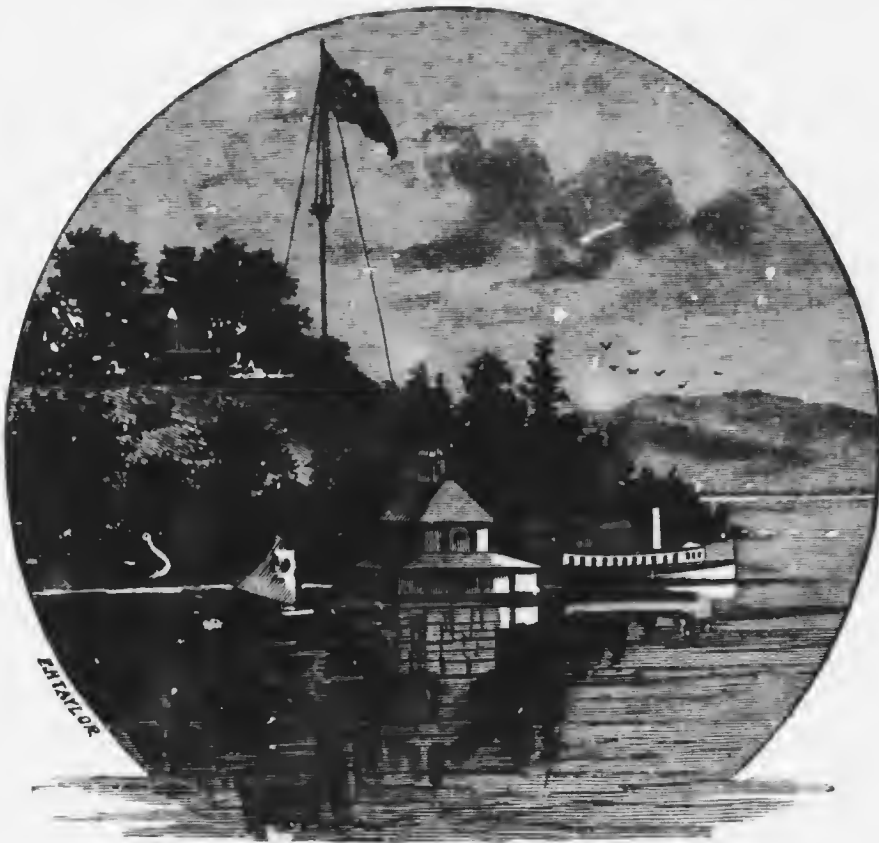
The great influx of people from all directions and the immense popularity of the Thousand Island region of the St. Lawrence River, together with the fact that Alexandria Bay is the loveliest river resort in the world, have been instrumental in bringing about a new system of train service from the principal centres in the east and west.

The Rome, Watertown & Ogdensburg Railroad Company recognizing the fact that to take care of the enormous business already in existence, and to create new business, it was necessary to inaugurate a fast train service, has introduced limited trains to the Thousand Islands, as follows:

From New York City in conjunction with the New York Central & Hudson River Railroad, a fast train leaves the Grand Central Depot every night at 6.30. This train has elegant dining-cars attached, and the meals served therein are equal to those found in the best restaurants in the city. Dinner is served immediately after leaving Grand Central Depot. The train only makes six stops between New York and Clayton—distance, 336 miles—being run expressly for the Thousand Island travel. It

reaches Clayton every day at 5.45 a.m. and Alexandria Bay at 6.55 a.m., and passengers are landed in front of the THOUSAND ISLAND HOUSE, reaching the hotel in time for breakfast.

Returning, this fast train leaves Alexandria Bay from the dock near the THOUSAND ISLAND HOUSE, by steamer at 6.25 p.m. At Clayton, 12 miles distant, the fast train with elegant Wagner sleeping cars, is waiting, and soon after the arrival of the



AN ISLAND VILLA.

steamer at Clayton, the train leaves that point for New York with very few stops, arriving at the Grand Central Depot at 7 a.m., in time for breakfast.

This train is run expressly for the benefit of tourists, and the excellent facilities afforded, together with the fast time and avoidance of stops, is greatly appreciated. Another good feature

is the fact, that the train runs every day in each direction, and also carries the fast mails to and from the City of New York.

This train passes Albany at 10.40 p.m., connecting at that point with the train leaving Boston at 3 p.m. via the Boston & Albany Railroad, and passing Worcester at 8.23 p.m. and Springfield at 10.05 p.m., and bringing people from all points in New England.

The train service from the West is equally good. The fast train which is known as the St. Lawrence Steamboat Express, the tourist's favorite train, leaves Niagara Falls every day at 8.10 p.m., Suspension Bridge at 8.30 p.m. and Rochester at 11 p.m., with elegant through sleeping-cars for Clayton. This train makes immediate connection at Niagara Falls with trains for Chicago, St. Louis, Toledo, Cincinnati, Detroit and all Western cities. It affords passengers a splendid view of Niagara Falls and the wild romantic scenery of the Niagara River in the vicinity of Lewiston; thence runs along the south shore of Lake Ontario, making only five stops for a distance of 250 miles to Clayton, which is reached at 5.45 a.m. Passengers arrive at Alexandria Bay 6.55 a.m., in time for breakfast.

Westbound, this train leaves Alexandria Bay by steamer in the evening about 9 o'clock and arrives at Suspension Bridge the next morning at 10.30, Niagara Falls, 10.40 a.m., making immediate connections for all Western cities.

The day train service is equally good. Fast trains avoiding stops and carrying through drawing-room cars to Clayton are run from Niagara Falls, Rochester, Syracuse, Utica, New York and Albany. Passengers leaving Saratoga or Richfield Springs in the morning arrive at Alexandria Bay early in the afternoon.

The Rome, Watertown & Ogdensburg Railroad publish a beautiful book of 160 pages, large octavo size, containing eleven valuable maps and over 100 fine illustrations. This book is mailed free upon receipt of ten (10) cents postage to any address. Visitors to the St. Lawrence River, will find this book

valuable and interesting, as it illustrates and describes the St. Lawrence River better than any other publication.

Steamers leave at once upon arrival of these trains for Alexandria Bay, stopping at intermediate landings. Passengers may reach the river upon Sunday mornings upon the fast newspaper train, by which the metropolitan Sunday publications reach readers among the islands by noon.

The elegant steamer "St. Lawrence" makes four round trips daily between Alexandria Bay and Clayton, connecting at the latter point with all trains of the R., W. & O. R.R. from all points east and west, and with steam ferry-boats from the



Canadian city of Kingston. A daily line of stages runs to and from trains at Redwood upon the Ogdensburg Division of the R., W. & O. R.R. and Alexandria Bay.

The steamers of the Richelieu & Ontario Line leave Alexandria Bay every morning, except Mondays, for Montreal, arriving there at 6 p.m.

At Ogdensburg, also the terminus of the Northern Railroad which connects with the Vermont Central, and Northern Transit Co., a steamer leaves every morning for Alexandria Bay.

One of the Canadian steamers leaves Toronto at 10 o'clock every morning, except Sundays, for Montreal, stopping at Alexandria Bay.

HOW TO GET TO ALEXANDRIA BAY.

From NEW YORK—Ontario & Western, Weehawken Ferry, to Cape Vincent; boat to Thousand Island House, morning and evening.

From NEW YORK—People's Line Steamers, connecting with through car from Albany.

From NIAGARA FALLS—Via New York Central and Utica, morning and evening.

From NIAGARA FALLS—Via Toronto, boats daily.

From WHITE MOUNTAINS AND PORTLAND—Through cars to Ogdensburg, 35 miles by boat.

From MONTREAL—Daily, by boat or rail.

From ALL POINTS IN NEW ENGLAND—Via Vermont Central to Ogdensburg.

From SARATOGA AND RICHFIELD—Via New York Central and Rome, Watertown & Ogdensburg to Clayton.

From LAKE GEORGE AND LAKE CHAMPLAIN—Via Rouse's Point and Ogdensburg.

Finally, we cordially invite the great multitude of pleasure and health-seeking people to come to Alexandria Bay, where, amid the grand scenery, the health-giving, invigorating atmosphere, and in the unrivaled enjoyment of our boating, fishing and hunting, your enervated powers are sure to be builded up, and your social natures developed. We promise you all that can be desired in the way of accommodations and comforts, with more of the rational and healthful amusement than can be found at any other place of popular resort in the world.

R. H. SOUTHGATE,

President.

The following are the names of some of the guests of the 1000 Island House during the season of 1886.

H. R. Clarke and Family,	Jersey City.	Duncan S. Macintyre,	Montreal.
Chas. Lippincott and Wife,	Philadelphia.	Sheridan Shook and Family.	New York.
Wm. Rhineland and Family,	New York.	F. S. Vanderpoel,	"
H. A. Bogert and Family,	"	Polhemus Lyon,	"
Mr. and Mrs. Gregory Sutton,	"	I. A. Singer and Family,	"
Mrs. Julian Madan and Family,	"	E. B. Harper and Wife,	"
Mrs. W. A. Fraser and Family.	"	Mr. and Mrs. I. Lenox Banks,	"
Mrs. Jno. R. Harris and Family,	"	Hugh Paton and Wife.	Montreal.
Dr. G. G. Wheelock and Family.	"	W. A. Roebling and Wife,	Troy.
Dr. I. N. Kip and Family,	"	H. Knickerbacker and Wife,	New York.
A. Barricklo and Family,	"	F. J. Allen and Wife,	"
Mrs. Wm. Fouche and Family,	"	R. C. Brown and Wife,	"
W. K. Soutter and Family,	"	Geo. W. Hyatt and Wife.	"
Mr. and Mrs. W. F. Carleton,	"	Mr. and Mrs. John Lowey,	"
H. A. Robbins and Family,	"	A. C. Whitridge and Wife,	"
Mr. and Mrs. C. R. S. Roosevelt,	"	Mrs. Emily Given,	"
Mrs. Willets,	"	Chas. S. Osborn and Family,	Brooklyn.
Miss Crossman,	"	Geo. E. Hyatt and Wife,	New York.
W. H. Singer and Family,	Pittsburgh, Pa.	H. M. Williams and Family,	"
Walter Neilson and Family,	New York.	Wm. White and Wife,	"
David Dudley Field,	"	C. S. Bessell and Family,	Cleveland.
J. M. Randall,	"	F. S. Ferry and Party,	New York.
Miss Randall,	"	D. C. LeFevre and Family,	"
Mrs. C. K. Garrison,	"	D. R. Holt and Family,	Chicago.
Gen'l I. W. Husted and Family,	"	Mrs. J. J. Parkhurst,	"
Mr. and Mrs. Clayton Platt,	"	Miss Parkhurst,	"
C. W. Olliffe and Wife,	"	G. F. Hartt and Family,	Montreal.
B. B. Kirkland and Wife,	"	L. V. Sone an' Family,	New York.
Dr. Bowditch Morton,	"	Geo. Keep and Wife,	Brooklyn.
Mrs. J. D. Jones and Family,	"	J. B. Hurley and Family,	Jersey City.
George Bird,	"	J. M. Dyckman and Family,	New York.
Hon. Peter Mitchell,	Montreal.	Stephen Omeara and Family,	Boston.
Rodney C. Ward,	Brooklyn.	James Carr and Family,	New York.
Dr. Talmadge and Family,	"	Chas. W. Hull and Wife,	"
Mrs. T. Breeze and Family,	San Francisco.	Jno. G. Moore and Wife,	"
E. W. Dewey and Family.	New York.	Mr. and Mrs. A. P. Dix,	"
A. Wallach and Wife,	"	Mr. and Mrs. J. B. Dutcher,	"
W. H. Oakley and Family,	"	Gen'l Geo. S. Batcheller and Family,	"
Wm. H. Falconer and Family,	"		Saratoga.
Mrs. E. Davis and Family,	Providence.	John Lockwood and Family,	Norwalk, Conn.
J. A. Bingham and Family,	Chicago.	W. S. Keiley and Family,	New York.
W. H. Johnstone and Family,	Philadelphia.	Gen'l C. J. Hagg and Family,	"
Mrs. C. F. Ely and Family,	Chicago.	Mr. and Mrs. I. R. Bartlett,	"
General Butterfield,	New York.	W. H. Drew and Family.	"
Mr. and Mrs. Hugh A. Alien,	Montreal.	Mr. and Mrs. J. Seaver Page,	"

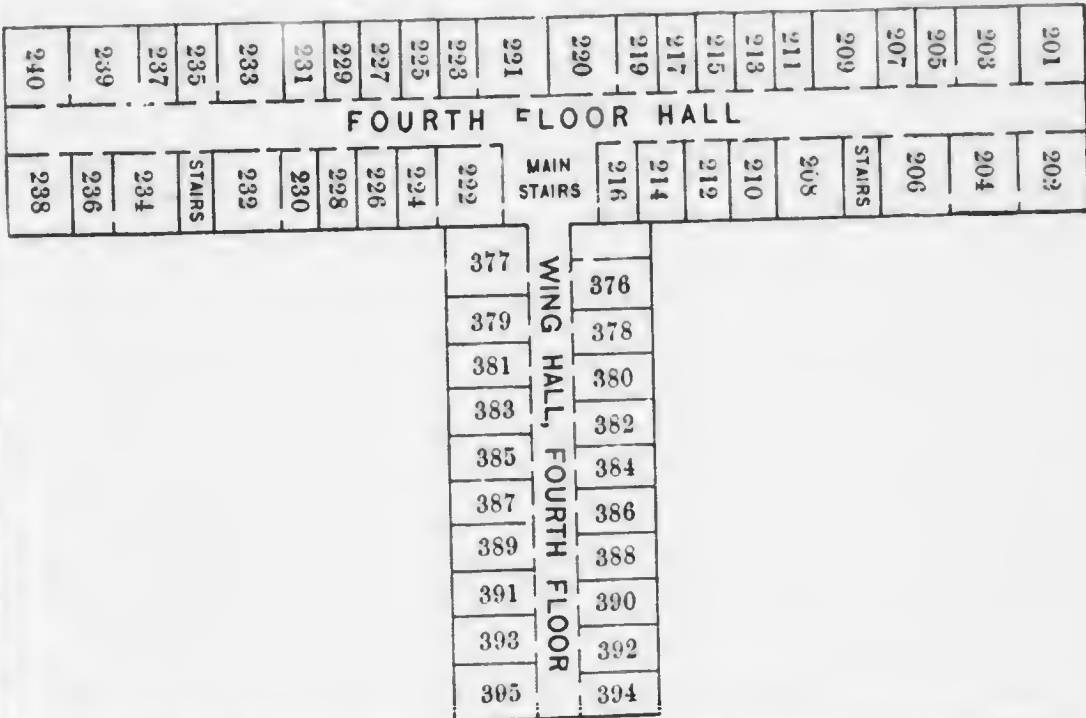
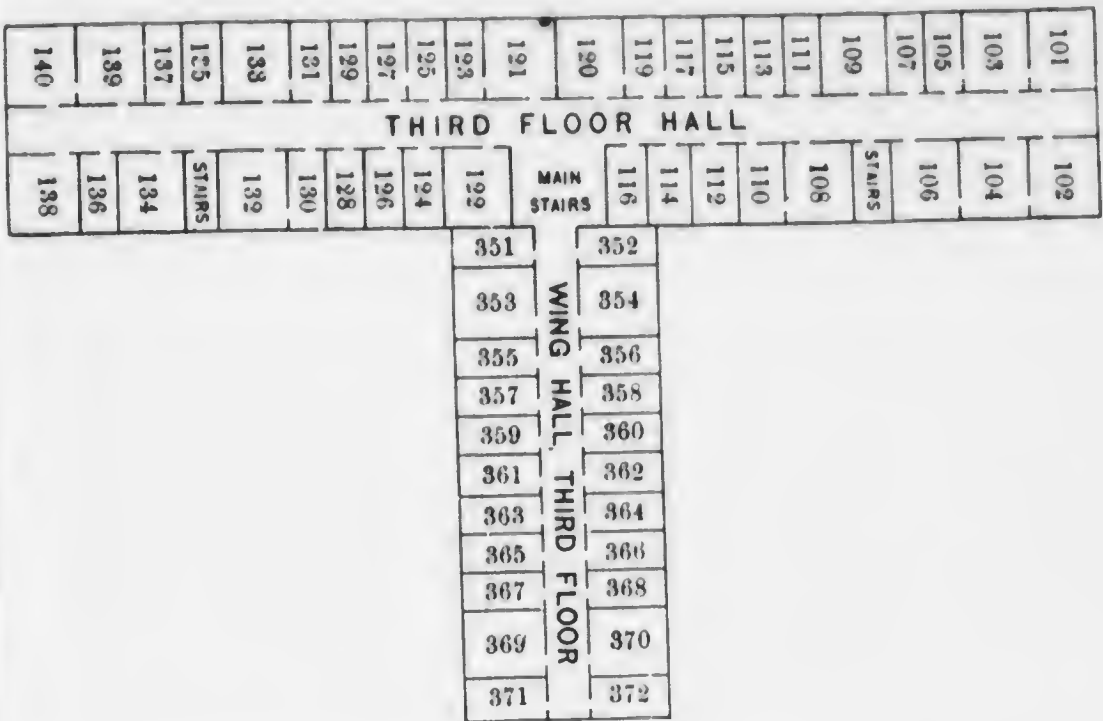


DIAGRAM OF THE THIRD AND FOURTH FLOORS OF THE THOUSAND ISLAND HOUSE

42

WINDSOR HOTEL,

MONTREAL.



THE "Windsor" is unanimously classed by its patrons and the public in general as unquestionably the finest hotel in Canada, and equal in every respect to the most palatial hotels in the United States; possessing a most beautiful and airy site, and situated on one of the finest avenues, and squares, it commands delightful views, and easy access to the interesting historical portions of the city. Mount Royal with its beautiful park, unrivaled for beauty of scenery, rises in close proximity, and its lovely drives are within easy walking distance.

The sanitary condition of the hotel has been entirely renewed, and regularly inspected by the Sanitary Inspector of the city.

The management has undergone a complete change and Mr. Geo. W. Swett, long and favorably known as a former manager of the house, has once more undertaken the management.

Pleasure travel to Montreal in winter dates from the opening of the Windsor Hotel. The famous Carnivals have drawn universal attention to the advantages of Montreal as a winter resort. Its weather is clear and steady, and affords opportunity for a round of healthful sports, unequalled in the world. The tide of travel during the winter season increases year by year, and finds the Windsor the centre of attraction. Beside it the Ice Palace is reared, and in its immediate vicinity are the principal rinks, toboggan hills, and club-houses, and within one minute's walk are the new depots of the Grand Trunk and Canadian Pacific Railways.

→* GEO. W. SWETT, MANAGER.

ACKER, MERRALL & CONDIT,

FINE WINES,

HAVANA CIGARS,

FANCY GROCERIES,

57th Street and 6th Avenue,

Broadway and 42d Street,

130 & 132 Chambers St.,

NEW YORK.

39 RUE DE CHATEAUDUN, PARIS.

ACKER, EDGAR & CO.,

YONKERS.

BARTON & GUESTIER.
 -* Clarets, Sauternes, etc.



DELBECK & CO.,
 Champagnes
 "DELMONICO," "EXTRA DRY, 1880," "VIN BRUT, 1880."



C. MAREY & LIGER BELAIR,
 Burgundies
 PEPPERIN SHERRIES. SANDEMAN & CO. PORTS. LEASOCK & CO MADEIRA.



ROSBACH WATER,
 The Finest Sparkling Mineral Water Imported.



* CUTTER * WHISKIES *



REPRESENTED BY
E. Lamontagne & Sons,
 Nos. 53, 55 and 57 BEAVER STREET,
 NEW YORK.

ST. LOUIS HOTEL,

QUEBEC, CANADA.



THIS HOTEL, WHICH IS UNRIVALED

FOR

Size, Style, and Locality in Quebec,

has just been completely transformed and modernized throughout, being refitted with new system of drainage and ventilation, passenger elevator, Electric bells and lights, &c. In fact, all that modern ingenuity and practical science can devise to promote the comfort and convenience of guests, has been supplied.

The ST. LOUIS is eligibly situated in the immediate vicinity of the most delightful and fashionable promenades, the Governor's Garden, the Citadel, Place d'Armes, Dufferin Terrace and the Esplanade, and contains accommodations for 500 guests.

CHATEAU ST. LOUIS HOTEL COMPANY,

PROPRIETORS.

ANTHONY OECHS,
51 Warren Street,
NEW YORK.

Sole Agents in the United States for

Messrs. DUMINY & CO., - - Champagnes.

“ BRANDENBURG FRÉRES, - -
Clarets, Olive Oil and Cognac.

“ C. LAUTEREN SOHN, - Heckwines.

“ R. BRÜNINGHAUS, - Burgundies.

“ HULSTKAMP & Z^N & M^N, - Cordials.

SELTERS WATER. (NIEDER SELTERS.)

THE ABOVE ARE ON WINE LIST OF THIS HOTEL.

CORNWALL BROTHERS,
GENERAL TICKET AGENTS,



ALEXANDRIA BAY, JEFFERSON COUNTY, N. Y.

Tickets for Quebec, Ha-Ha Bay, Gulf Ports, Halifax, Portland, Boston, White Mountains, Lake Champlain, Lake George, Saratoga, New York, and all points East and West, sold at

LOWEST EXCURSION RATES,

Secure your tickets before taking the Steamers and save the difference between Local and Excursion Rates. Baggage checked to all points. Also dealers in

DOMESTIC AND FANCY DRY GOODS,

Notions, Carpets, Hats, Caps, Clothing, Boots and Shoes,

GROCERIES, FISHING TACKLE,

HARDWARE, CROCKERY, PAINTS, OILS, Etc.

They pay CASH for all their purchases, thereby getting the Benefit of all Discounts, which enables them to sell goods cheap. They have also a

CUSTOM TAILORING DEPARTMENT,

In charge of one of the *best* and most *experienced* cutters in the country.

CAMP AND ISLAND SUPPLIES

— AND —

FANCY GROCERIES

THEY MAKE A SPECIALTY.

They employ experienced and courteous salesmen who do not consider it trouble to show goods. All are cordially invited to call and see them.

Alexandria Bay, June, 1888.

CHAS. CROWELL, President.
R. F. WARE, Vice-President.

C. A. JOHNSON, Treasurer.
C. H. KOSI'ER, Secretary.

The Unexcelled Fireworks Co.

(INCORPORATED 1874.)

9 and 11 PARK PLACE, NEW YORK.

Western House: 519 LOCUST STREET, ST. LOUIS, MO.



LARGEST MANUFACTURERS AND LEADING HOUSE IN

FIREWORKS, FLAGS, LANTERNS, BALLOONS, &c.

The four Largest, Finest, Most Novel and Best Managed DISPLAYS OF FIREWORKS ever produced were those at

THE CENTENNIAL AT NEWBURGH, N. Y.,
October 18th, 1883.

THE PRESIDENTIAL INAUGURATION
At Washington, March 4th, 1885.

THE BI-CENTENNIAL AT ALBANY, N. Y.,
July 22d, 1886, and

THE UNVEILING OF THE BARTHOLOI STATUE OF LIBERTY,
At New York City, Nov. 1st, 1886.

They were manufactured and furnished by

THE UNEXCELLED FIREWORKS CO., 9 and 11 Park Place, N. Y.

Orders mailed one day will reach us the next.

Send for Illustrated Catalogue—Free.

PEOPLE'S LINE STEAMERS

ON THE HUDSON RIVER.

"DREW," - AND - "DEAN RICHMOND,"

CAPT. S. J. ROWE.

CAPT. THOS. POST.

Leave NEW YORK for ALBANY every WEEK DAY at 6 p.m.

From Pier 41 (old No.), N. R., Foot of Canal Street.

Connecting at Albany next A. M. with trains for the WEST, NORTH and EAST.

SARATOGA,

THE FASHIONABLE

LAKE
CHAMPLAIN,

THOROUGHFARE

LAKE
GEORGE,

FOR

AUSABLE
CHASM,

SUMMER

TRAVEL.

TRENTON
FALLS,

ALL THE
DELICACIES

OF THE

THOUSAND
ISLANDS,

SEASON.

CAPE VINCENT,

EUROPEAN PLAN.

CLAYTON,

NO DUST.

NIAGARA FALLS,

COMFORT. PLEASURE.

TICKETS SOLD AND

BAGGAGE CHECKED TO ALL



Summer Resorts of the North, East and West.

Leave ALBANY at 8 p.m. for NEW YORK every WEEK DAY;

Or, on arrival of Trains from the NORTH, EAST and WEST.

J. H. ALLAIRE, Gen'l Ticket Agt.,
Pier 41, N.R., foot Canal St., N.Y.

M. B. WATERS, Gen'l Pass. Agt.,
ALBANY, N. Y.

THE THOUSAND ISLAND HOUSE ^{AND} THE CROSSMON HOUSE

ARE LIGHTED WITH GAS MADE FROM

PRATT'S

Patent-Prepared Gasolene

and the same kind of gas is employed in lighting many prominent summer resorts in this country, among which are the Profile House, White Mountains; West End Hotel, Long Branch; the American House and the Spring House, Richfield Springs; Long Beach Hotel, Long Beach; Pequot House, New London, and many others.

PRATT MANUFACTURING CO.,

Sole Proprietors,

26 BROADWAY, NEW YORK.

RAYNER'S SPECIALTIES.

EXTRA PLAIN SODA.

EXTRA SARSAPARILLA.

CRYSTAL SPRING WATER.

GOLDEN RUSSET CIDER.

RAYNER'S EXTRA GINGER ALE.

Manufactured Expressly for the American Market.

LARGEST IN THE WORLD.

PUREST AND BEST.

Schlitz Milwaukee Beer. Ruppert's Extra Lager. Stag Brand Lager (Export). Massey's Ale and Porter.

New York Bottling Co.,

160-162 S. FIFTH AVENUE.

These specialties can be procured at the Thousand Island House Wine-room.

THE RIVER ST. LAWRENCE PLEASURE ROUTE, SEASON 1888.

The Richelieu & Ontario Navigation Co.'s

ROYAL MAIL LINE OF STEAMERS BETWEEN
TORONTO, MONTREAL, QUEBEC and the SAGUENAY RIVER.
 OVER 1,000 MILES UNDER ONE MANAGEMENT.



"PASSPORT," : Captain Snelair. | "SPARTAN," : : Captain Irvine.
 "CORINTHIAN," : Captain Wm. Ada. | "ALGERIAN," : : Captain Trowell.

COMMENCING MONDAY, JUNE 4th, the above will run daily (Sundays excepted), leaving Montreal at 9.00 a.m., for Toronto, calling at intermediate ports; and on and after June 6th, until September 1st, will leave Toronto for Montreal daily (Sundays excepted) at 2 p.m.; calling at Bowmanville, Port Hope, Cobourg, Kingston, Clayton, Round Island, Thousand Island Park, Alexandria Bay, Brockville, Prescott, Cornwall. Arriving at Montreal at 6.30 p.m., connecting with the large palatial steamers

"QUEBEC" and "MONTREAL,"

Lighted throughout with electric lights, newly renovated and richly upholstered, furnished with all the modern improvements for speed, comfort and safety, and replete with every luxury. The only direct daily line between Montreal and Quebec, affording travelers a full night's rest in elegant and commodious state-rooms. Leaving Montreal every evening (Sundays excepted) at 7.00 o'clock, and from Quebec at 5.00 p.m., calling at intermediate ports; arriving at Quebec at 6.00 a.m. Connecting with the Intercolonial Railway for the Maritime Provinces, and with the Company's magnificent steamers

"ST. LAWRENCE" and "UNION,"

specially outfitted and refurnished throughout, to run between Quebec and the River Saguenay, will afford tourists unsurpassed accommodation; thus forming one of the longest lines of Inland Water Communication on the Continent, which, for variety of scenery, cannot be surpassed, if equaled, in the world. All the rapids of the River St. Lawrence are run under the guidance of old and experienced pilots. Tickets and all information may be obtained from the principal Railways and Ticket Offices throughout the United States and Canada.

ALEX. MILLOY,
 Manager Western Division.

J. B. LABELLE,
 General Manager.

50 Miles among the Islands.

More islands to be seen; more miles to ride; and more pleasure to enjoy by taking a trip on the

“New Island Wanderer,”

just completed and built expressly for this route. The old route extended up the river to include Clayton, and down the river to take in “Sport Island,” “Little Lehigh” and “Idlewild,” showing by actual count over 1,200 islands besides the many other beautiful and historic points in less time than was consumed by the old boat.

The old “Island Wanderer” has been thoroughly refitted and will be run in connection with the new boat from Clayton to Ogdensburg and return daily, connecting at Ogdensburg and Prescott with all trains and steamboats for Montreal, White Mountains, Lake Champlain, Lake George and other points.

E. W. VISGER,

Manager of the Alexandria Bay Steamboat Co.

F. W. DEVOE & CO.,

Nos. 101 & 103 Fulton Street,

NEW YORK CITY,

MANUFACTURERS OF

Ready Mixed Paints,

PREPARED READY FOR USE IN

50 FASHIONABLE SHADES.

These Paints are made from the best pigments known, and PURE LINSEED OIL.

THE 1,000 ISLAND HOUSE IS PAINTED WITH OUR PAINTS.

ALSO MANUFACTURERS AND DEALERS IN

Hard Oil Finishes, Interior Wood Coatings, Floor Finishes, etc.,

— AND —

ARTIST MATERIALS OF ALL KINDS.

COMPAGNIE GÉNÉRALE TRANSATLANTIQUE

ONLY DIRECT FRENCH LINE OF MAIL STEAMERS.

Postal Service from HAVRE to NEW YORK in 7½ Days, and Return
BY THE NEW EXPRESS STEAMERS.

"LA BOURGOGNE,"

(7,000 Tons, 8,000 H. P.)

"LA BRETAGNE,"

(7,000 Tons, 8,000 H. P.)



"LA GASCOGNE,"
(7,000 Tons, 8,000 H. P.)

"LA CHAMPAGNE,"
(7,000 Tons, 8,000 H. P.)

6,300 Tons.]— **"LA NORMANDIE,"** —[7,000 H. P.

Leaving New York for Havre, and from Havre for New York every Saturday.

Passengers for the Continent by this line avoid the discomforts of crossing the channel and the transfer by railway, thus saving much time, trouble and expense.

A special fast Transatlantic Train starts from alongside the steamer upon its arrival at Havre, and connects at Paris with the Western of France Railway, the Paris-Lyon-Mediterranean Railway, and the International Sleeping Cars to all interior points of Europe. BAGGAGE may be checked from New York through to Paris and points beyond (in bond), without the inconvenience of intermediate Custom House.

Through tickets are issued by this Line to all points in France, Switzerland, Italy and to Mediterranean ports, including Circular Tours from New York to France, Italy, Spain, Algeria, Tunis, Morocco, Malta, Corsica, etc.

The Saloons are elegant and superb, and the table unsurpassed by any other line. The Saloons and Cabins are lighted by Electric Lamps, and annunciators connect with Steward's Department from each room. A fully qualified Physician is carried on each steamer. Pursers' Doctors and Stewards speak English.

RATES OF PASSAGE, including Attendance, Wine and all Necessaries.

NEW YORK TO HAVRE.

1st Class Passage,	\$80,	\$100,	\$120	2d Class Passage,	\$300,	\$400	\$500
3d " " Steerage,	\$20			Bridal Rooms,			

For all information and tickets apply to

LOUIS DE BEBIAN, Agent, 3 Bowling Green, N. Y.



PARIS, Passage, 12 Boulevard des Capucines.

HAVRE, H. de Gaillon, Ag't, 35 Quai d'Orleans.

J. HENRY HENTZ.

J. P. ROBINETT.

J. HENRY HENTZ, JR.

—  ESTABLISHED 1793.  —

WHITE, HENTZ & CO.,

SOLE PROPRIETORS OF

PENNSYLVANIA MONOGRAM

— AND —

Trimble Whiskies,

222 & 224 North Second St.,

PHILADELPHIA, PA.

D. LIEBER, - - - { 17 South William Street,
NEW YORK.


Col. H. A. SELIGSON, { 1200 Pennsylvania Avenue,
WASHINGTON, D. C.


THE WAY TO GIVE A PARTY IN NEW YORK.

A sign of autumn's return is seen in the announcements of the caterers—those convenient people who relieve fashionable folk from all the trouble and details of giving entertainments—whether a grand wedding reception, a ceremonious banquet or small entertainment. If Mrs. —, of Madison Avenue, concludes to give a large party, and desires to take little or no trouble in the matter, she simply sends for a caterer of reputation, mentions the character of the entertainment, and hands him the list of invited guests. He furnishes the engraved cards, and delivers them, supplies a band of music, decorates the house with natural flowers, sends a corps of waiters, and prepares a table with all the delicacies of the season, including wines of choice vintage. All that *madame* is called upon to do is to array herself in becoming attire for the occasion, and "receive" her guests, as 'tis called. This plan is stylish, fashionable, gives perfect ease to the host—and is expensive, of course; but the idea can also be carried out in a moderate and modest way at less cost. GEORGE E. GREENE & SON, Caterers, 113 West 28th St., for instance, will execute any order, large or small, and so far as we learn, they give entire satisfaction. This firm counts among its customers some of our most wealthy and distinguished families, and not a few entertainments which they furnish, Delmonico receives credit for. Delmonico's viands are not superior in quality nor in manner of preparation to GREENE'S, and his ice cream is not so pleasant to our palate.

MERWIN, HULBERT & CO.,

26 West 23d Street, New York.

Send 25 cents for our 

 175 Page Catalogue,
10 x 12 inches.

35 PAGES DEVOTED TO

→*FISHING TACKLE.*←

Most complete Catalogue on Out-door Sports ever Published.

BICYCLES,  TRICYCLES,  LAWN TENNIS, Etc.

