

IMAGE EVALUATION
TEST TARGET (M)



Photographic
Sciences
Corporation

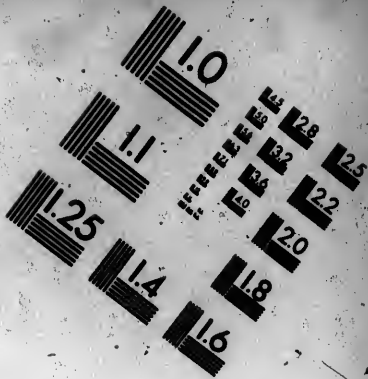
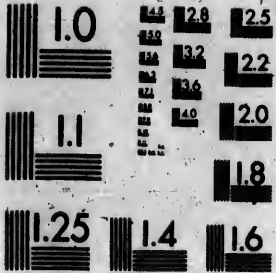
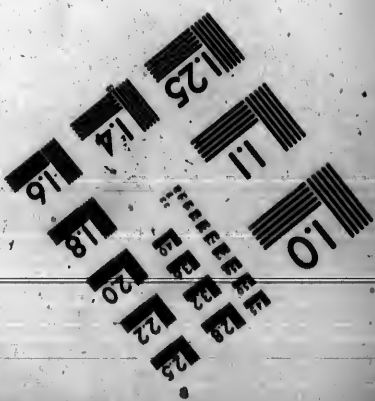


IMAGE EVALUATION TEST TARGET (MT-3)



6"



Photographic
Sciences
Corporation

23 WEST MAIN STREET
WEBSTER, N.Y. 14590
(716) 872-4303

2.5
22

**CIHM/ICMH
Microfiche
Series.**

C
C
m



Canadian Institute for Historical Microreproductions / Institut canadien de microreproductions historiques

© 19

CMH
ne

CIHM/ICMH
Collection de
microfiches.



Microreproductions / Institut canadien de microreproductions historiques

1987

The Institute has attempted to obtain the best original copy available for filming. Features of this copy which may be bibliographically unique, which may alter any of the images in the reproduction, or which may significantly change the usual method of filming, are checked below.

L'Institut a tenté d'obtenir le meilleur exemplaire original disponible pour le filmage. Les caractéristiques de ce document qui peuvent être bibliographiquement uniques, qui peuvent modifier les images dans la reproduction, ou qui peuvent changer de manière significative la méthode habituelle de filmage, sont indiquées ci-dessous.

- Coloured covers/
Couverture de couleur
- Covers damaged/
Couverture endommagée
- Covers restored and/or laminated/
Couverture restaurée et/ou pelliculée
- Cover title missing/
Le titre de couverture manque
- Coloured maps/
Cartes géographiques en couleur
- Coloured ink (i.e. other than blue or black)/
Encre de couleur (i.e. autre que bleue ou noire)
- Coloured plates and/or illustrations/
Planches et/ou illustrations en couleur
- Bound with other material/
Relié avec d'autres documents
- Tight binding may cause shadows or distortion
along interior margin/
La reliure serrée peut causer de l'ombre ou de la
distorsion le long de la marge intérieure
- Blank leaves added during restoration may
appear within the text. Whenever possible, these
have been omitted from filming/
Il se peut que certaines pages blanches ajoutées
lors d'une restauration apparaissent dans le texte,
mais, lorsque cela était possible, ces pages n'ont
pas été filmées.
- Additional comments:/ [Printed ephemera] [2] p.
Commentaires supplémentaires:

This item is filmed at the reduction ratio checked below/
Ce document est filmé au taux de réduction indiqué ci-dessous.

10X	12X	14X	16X	18X	20X	22X
<input type="checkbox"/>	<input type="checkbox"/>	<input type="checkbox"/>	<input type="checkbox"/>	<input type="checkbox"/>	<input checked="" type="checkbox"/>	<input type="checkbox"/>

ographic Notes/Notes techniques et bibliographiques

ne best
ures of this
ique.
ne
y change
ed below.

L'Institut a microfilmé le meilleur exemplaire qu'il lui a été possible de se procurer. Les détails de cet exemplaire qui sont peut-être uniques du point de vue bibliographique, qui peuvent modifier une image reproduite, ou qui peuvent exiger une modification dans la méthode normale de filmage sont indiqués ci-dessous.

- Coloured pages/
Pages de couleur
- Pages damaged/
Pages endommagées
- Pages restored and/or laminated/
Pages restaurées et/ou pelliculées
- Pages discoloured, stained or foxed/
Pages décolorées, tachetées ou piquées
- Pages detached/
Pages détachées
- Showthrough/
Transparence
- Quality of print varies/
Qualité inégale de l'impression
- Includes supplementary material/
Comprend du matériel supplémentaire
- Only edition available/
Seule édition disponible
- Pages wholly or partially obscured by errata slips, tissues, etc., have been refilmed to ensure the best possible image/
Les pages totalement ou partiellement obscurcies par un feuillet d'errata, une pelure, etc., ont été filmées à nouveau de façon à obtenir la meilleure image possible.

or black)/
eue ou noire)

a/
leur

or distortion

mbre ou de la
rieure

tion may
ossible, these

nches ajoutées
nt dans le texte,
ces pages n'ont

[Printed ephemera] [2] p.

o checked below/
tion indiqué ci-dessous.

18X	20X	22X	24X	26X	28X	30X	32X
		✓					

The copy filmed here has been reproduced thanks to the generosity of:

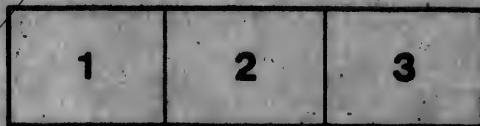
D. B. Weldon Library
University of Western Ontario
(Regional History Room)

The images appearing here are the best quality possible considering the condition and legibility of the original copy and in keeping with the filming contract specifications.

Original copies in printed paper covers are filmed beginning with the front cover and ending on the last page with a printed or illustrated impression, or the back cover when appropriate. All other original copies are filmed beginning on the first page with a printed or illustrated impression, and ending on the last page with a printed or illustrated impression.

The last recorded frame on each microfiche shall contain the symbol \rightarrow (meaning "CONTINUED"), or the symbol ∇ (meaning "END"), whichever applies.

Maps, plates, charts, etc., may be filmed at different reduction ratios. Those too large to be entirely included in one exposure are filmed beginning in the upper left hand corner, left to right and top to bottom, as many frames as required. The following diagrams illustrate the method:



duced thanks

L'exemplaire filmé fut reproduit grâce à la
générosité de:

D. B. Weldon Library
University of Western Ontario
(Regional History Room)

est quality
nd legibility
with the

Les images suivantes ont été reproduites avec le
plus grand soin, compte tenu de la condition et
de la netteté de l'exemplaire filmé, et en
conformité avec les conditions du contrat de
filmage.

rs are filmed
nding on
ated impres-
riate. All
nning on the
d impres-
th a printed

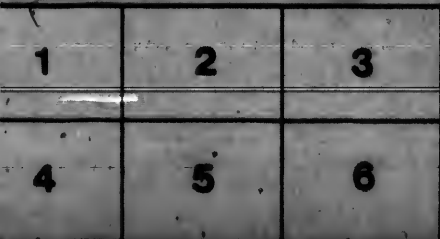
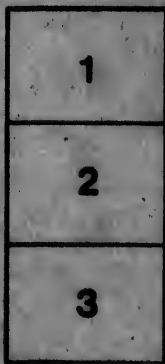
Les exemplaires originaux dont la couverture en
papier est imprimée sont filmés en commençant
par le premier plat et en terminant soit par la
dernière page qui comporte une empreinte
d'impression ou d'illustration, soit par le second
plat, selon le cas. Tous les autres exemplaires
originaux sont filmés en commençant par la
première page qui comporte une empreinte
d'impression ou d'illustration et en terminant par
la dernière page qui comporte une telle
empreinte.

rofiche
ng "CON-
g "END").

Un des symboles suivants apparaîtra sur la
dernière image de chaque microfiche, selon le
cas: le symbole \rightarrow signifie "A SUIVRE", le
symbole ∇ signifie "FIN".

med at
large to be
filmed
ner, left to
rnes as
strate the

Les cartes, planches, tableaux, etc., peuvent être
filmés à des taux de réduction différents.
Lorsque le document est trop grand pour être
reproduit en un seul cliché, il est filmé à partir
de l'angle supérieur gauche, de gauche à droite,
et de haut en bas, en prenant le nombre
d'images nécessaire. Les diagrammes suivants
illustrent la méthode.



THE INCREASE OF THE NATIONAL DEBT. AN ENORMOUS FIGURE.

Since 1867, the gross National Debt of the Dominion of Canada has been increased by \$188,258,000. During Sir John Macdonald's administrations the increase has been \$144,089,000. While Mr. Mackenzie was Premier an apparent increase is shown of \$44,179,000. But deducting the purely nominal increase of \$4,500,000, caused by the discount on the loan when the rate of interest was reduced by Sir Richard Cartwright from five to four per cent., it leaves the actual expenditure chargeable to capital during Mr. Mackenzie's term, \$39,679,000. Of that amount the sum of \$32,447,000 was expended on public works under progress when Mr. Mackenzie took office in 1873. The Conservative Governments are therefore directly responsible for the entire increase, with the exception of \$7,232,000.

Conservative Reform.	1867	1873.	1878.	1878.	1886.	MILLIONS.
Increases.	When Sir John Macdonald took office the debt was	When Sir John Macdonald resigned the Debt was	Increased by Mr. Mackenzie for works under progress when he took office.	Showing proportion of increase of Debt for which Mr. Mackenzie was responsible in five years.	After seven years of Tory Government again the Debt in March, 1886, was increased to	
Tory \$106,857,000.						\$ 280
						270
						260
						250
						240
						230
						220
						210
						200
						190
Reform \$7,232,000.						180
Tory \$32,447,000.						170
						160
						150
Tory \$37,732,000.						140
						130
						120
						110
						100
						90
	\$93,246,000.	\$130,778,000.	\$163,225,000.	\$174,957,000. Including \$4,500,000 discount on loan.	\$281,310,000.	
		TORY.	TORY.	REFORM.	TORY.	

The Blue shows the responsibility of the Conservative party, and the Red that of Mr. Mackenzie's Government, for the several increases.

[Foot 1.]

[Over.]

THE INCREASE OF THE FEDERAL DEBT.

Which Political Party is responsible?

The proportionate responsibility resting upon the two political parties for the increases that have taken place in the gross debt of the Dominion since 1867 can be readily understood by a study of the columns in the other page of this sheet. Briefly summarized the account stands:

Increase from 1867 to 1873 under Sir John Macdonald	\$37,732,000
“ from 1873 to 1878 for public works placed under construction before Sir John resigned in 1873.....	23,447,000
“ from 1873 to 1878 under Mr. Mackenzie's control	7,332,000
“ from 1878 to March, 1886, by Sir John's administration	106,357,000

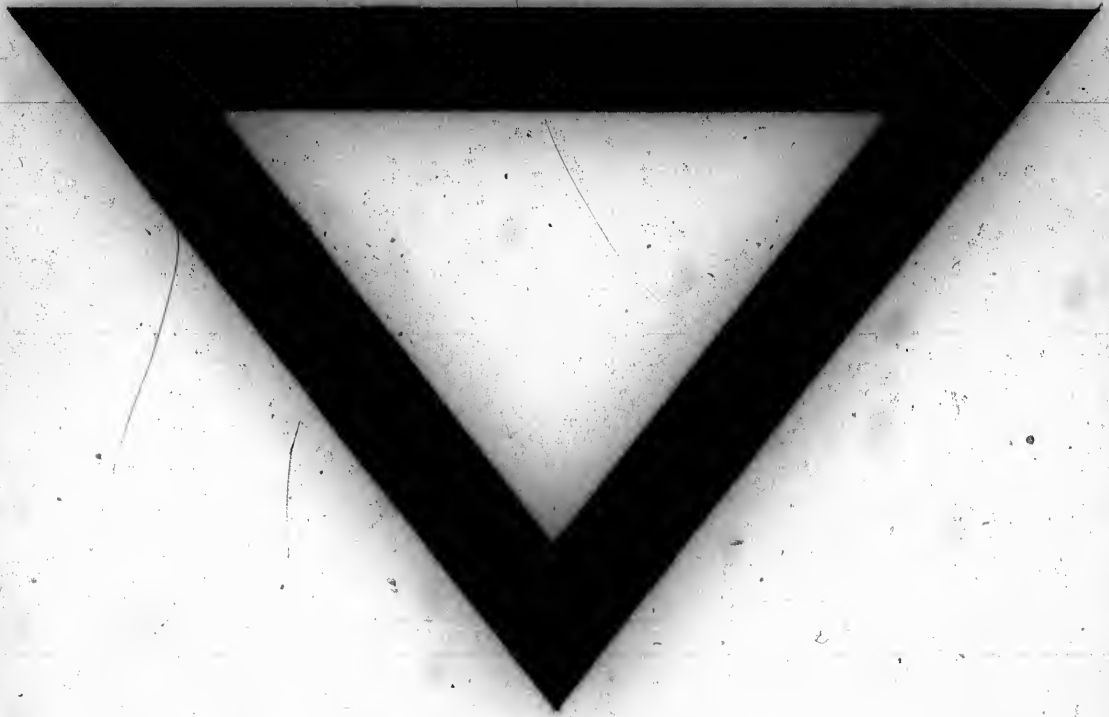
In March, 1886, Hon. Mr. McLellan, Finance Minister, announced that the Gross Debt of Canada was \$281,314,000, an increase of **\$106,357,000** during the 30 months that the present extravagant administration had then been in power, showing an

Average Increase for each month of	\$1,181,174.10
“ “ for each day, allowing 30 working days in the month.....	\$45,551.00
“ “ per hour, allowing 10 working hours in each day.....	\$4,545.00
“ “ per minute, during 30 months occupancy of the Treasury Benches	\$75.00

The following is the Statement of the Return, No. 44, 1878, presented to the House of Commons, showing the total amount chargeable to capital, expended on public works between January 1st, 1874, and February 28th, 1878, under progress when Sir John Macdonald's government resigned in November, 1873, which is referred to above and on the other side.

St. Lawrence Canals	\$3,520,499 93
Welland Canal.....	6,948,849 63
Ottawa Works	1,403,609 80
Bain Verte Canal.....	930 26
Public Buildings, Ottawa	913,182 06
Railways—N.S. and N.B.....	1,355,276 33
Intercolonial Railway.....	5,926,549 33
Pacific Railway	6,269,343 85
P. E. Island Railway	268,632 73
	<hr/>
	\$33,447,188 90
Amount expended on above works between July 1st, 1873 and January 1st, 1874; and March 1st and July 1st, 1878.....	\$4,000,000 00
Total	<hr/>
	\$37,447,188 90

From the above it will be seen how the members of the present government have abused the trust reposed in them. That the past may be taken as an indication of what they will do in the future, if they are allowed to remain in power, there cannot be any question. The remedy is in the hands of the Electors at the Poll.





3

5

D

