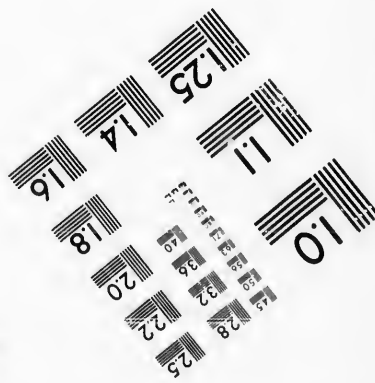
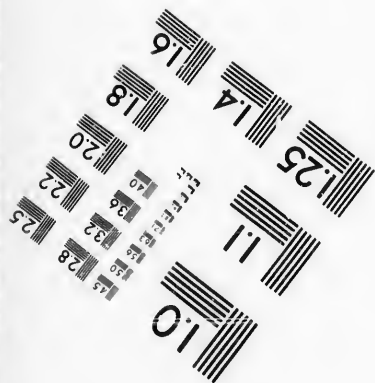
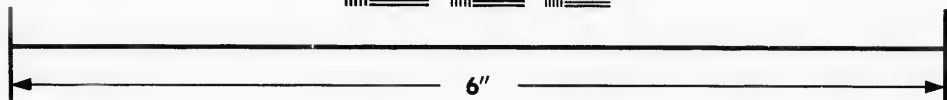
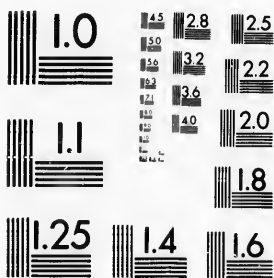


**IMAGE EVALUATION
TEST TARGET (MT-3)**



Photographic
Sciences
Corporation

23 WEST MAIN STREET
WEBSTER, N.Y. 14580
(716) 872-4503

15
28
32
36
22
20
18

**CIHM/ICMH
Microfiche
Series.**

**CIHM/ICMH
Collection de
microfiches.**



Canadian Institute for Historical Microreproductions / Institut canadien de microreproductions historiques

11
01

© 1987

Technical and Bibliographic Notes/Notes techniques et bibliographiques

The Institute has attempted to obtain the best original copy available for filming. Features of this copy which may be bibliographically unique, which may alter any of the images in the reproduction, or which may significantly change the usual method of filming, are checked below.

L'Institut a microfilmé le meilleur exemplaire qu'il lui a été possible de se procurer. Les détails de cet exemplaire qui sont peut-être uniques du point de vue bibliographique, qui peuvent modifier une image reproduite, ou qui peuvent exiger une modification dans la méthode normale de filmage sont indiqués ci-dessous.

- | | |
|--|--|
| <input type="checkbox"/> Coloured covers/
Couverture de couleur | <input type="checkbox"/> Coloured pages/
Pages de couleur |
| <input type="checkbox"/> Covers damaged/
Couverture endommagée | <input type="checkbox"/> Pages damaged/
Pages endommagées |
| <input type="checkbox"/> Covers restored and/or laminated/
Couverture restaurée et/ou pelliculée | <input type="checkbox"/> Pages restored and/or laminated/
Pages restaurées et/ou pelliculées |
| <input type="checkbox"/> Cover title missing/
Le titre de couverture manque | <input checked="" type="checkbox"/> Pages discoloured, stained or foxed/
Pages décolorées, tachetées ou piquées |
| <input type="checkbox"/> Coloured maps/
Cartes géographiques en couleur | <input type="checkbox"/> Pages detached/
Pages détachées |
| <input type="checkbox"/> Coloured ink (i.e. other than blue or black)/
Encre de couleur (i.e. autre que bleue ou noire) | <input checked="" type="checkbox"/> Showthrough/
Transparence |
| <input type="checkbox"/> Coloured plates and/or illustrations/
Planches et/ou illustrations en couleur | <input type="checkbox"/> Quality of print varies/
Qualité inégale de l'impression |
| <input type="checkbox"/> Bound with other material/
Relié avec d'autres documents | <input type="checkbox"/> Includes supplementary material/
Comprend du matériel supplémentaire |
| <input type="checkbox"/> Tight binding may cause shadows or distortion
along interior margin/
La reliure serrée peut causer de l'ombre ou de la
distorsion le long de la marge intérieure | <input type="checkbox"/> Only edition available/
Seule édition disponible |
| <input type="checkbox"/> Blank leaves added during restoration may
appear within the text. Whenever possible, these
have been omitted from filming/
Il se peut que certaines pages blanches ajoutées
lors d'une restauration apparaissent dans le texte,
mais, lorsque cela était possible, ces pages n'ont
pas été filmées. | <input type="checkbox"/> Pages wholly or partially obscured by errata
slips, tissues, etc., have been refilmed to
ensure the best possible image/
Les pages totalement ou partiellement
obscurcies par un feuillet d'errata, une pelure,
etc., ont été filmées à nouveau de façon à
obtenir la meilleure image possible. |
| <input checked="" type="checkbox"/> Additional comments:/ [Printed ephemera] [4] p.
Commentaires supplémentaires: | |

This item is filmed at the reduction ratio checked below/
Ce document est filmé au taux de réduction indiqué ci-dessous.

10X	14X	18X	22X	26X	30X
<input type="checkbox"/>	<input type="checkbox"/>	<input type="checkbox"/>	<input type="checkbox"/>	<input checked="" type="checkbox"/>	<input type="checkbox"/>
12X	16X	20X	24X	28X	32X

The copy filmed here has been reproduced thanks to the generosity of:

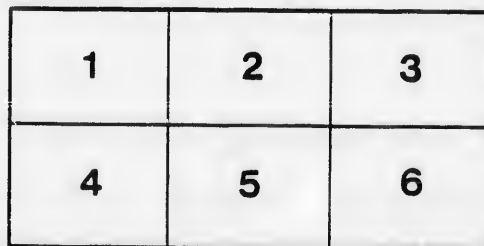
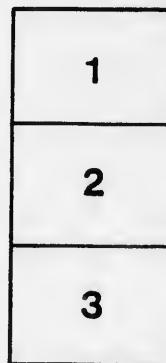
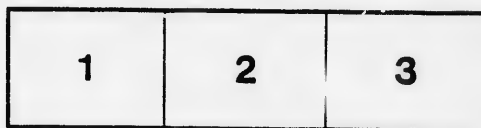
New Brunswick Museum
Saint John

The images appearing here are the best quality possible considering the condition and legibility of the original copy and in keeping with the filming contract specifications.

Original copies in printed paper covers are filmed beginning with the front cover and ending on the last page with a printed or illustrated impression, or the back cover when appropriate. All other original copies are filmed beginning on the first page with a printed or illustrated impression, and ending on the last page with a printed or illustrated impression.

The last recorded frame on each microfiche shall contain the symbol \rightarrow (meaning "CONTINUED"), or the symbol ∇ (meaning "END"), whichever applies.

Maps, plates, charts, etc., may be filmed at different reduction ratios. Those too large to be entirely included in one exposure are filmed beginning in the upper left hand corner, left to right and top to bottom, as many frames as required. The following diagrams illustrate the method:



L'exemplaire filmé fut reproduit grâce à la générosité de:

New Brunswick Museum
Saint John

Les images suivantes ont été reproduites avec le plus grand soin, compte tenu de la condition et de la netteté de l'exemplaire filmé, et en conformité avec les conditions du contrat de filmage.

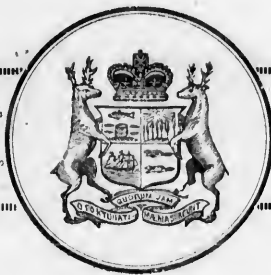
Les exemplaires originaux dont la couverture en papier est imprimée sont filmés en commençant par le premier plat et en terminant soit par la dernière page qui comporte une empreinte d'impression ou d'illustration, soit par le second plat, selon le cas. Tous les autres exemplaires originaux sont filmés en commençant par la première page qui comporte une empreinte d'impression ou d'illustration et en terminant par la dernière page qui comporte une telle empreinte.

Un des symboles suivants apparaîtra sur la dernière image de chaque microfiche, selon le cas: le symbole \rightarrow signifie "A SUIVRE", le symbole ∇ signifie "FIN".

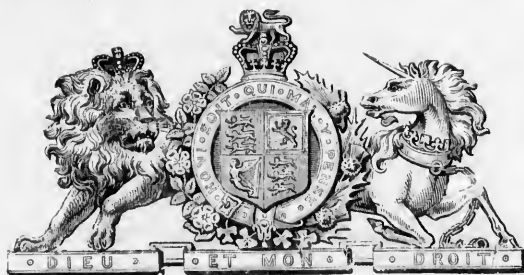
Les cartes, planches, tableaux, etc., peuvent être filmés à des taux de réduction différents. Lorsque le document est trop grand pour être reproduit en un seul cliché, il est filmé à partir de l'angle supérieur gauche, de gauche à droite, et de haut en bas, en prenant le nombre d'images nécessaire. Les diagrammes suivants illustrent la méthode.

errata
to

pelure,
n à



JUBILEE REGATTA.



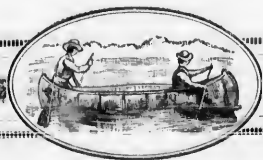
Saint John, N. B., June 20th, 1887.

COMMENCING AT 9 O'CLOCK, A. M.

This Regatta is held in celebration of the Jubilee of

Her Majesty, Queen Victoria,

Under the auspices of His Worship the Mayor, The Common Council, and Citizens.



Programme of Races.

- 1st. CENTREBOARD SLOOPS.** — 1st Prize, \$40; 2nd Prize, \$10. Entrance Fee, \$3.
 W. H. Logan enters his Sloop "Jubilee." Colors, White Square with Blue Border.
 George Gilbert enters his Sloop "Dawn." Colors, Small Jack.
 William E. Thompson enters his Sloop "Camilla." Colors, Yellow and Red.
 Henry A. Lawson enters his Sloop "Vivid." Colors, Red Cut Pennant.
 John Abbot enters his Sloop "Alice." Colors, Blue Pennant with White Star.
 Nehemiah Logan enters his Sloop "Dolphin." Colors, Red Square.
 Andrew Lawson enters his Sloop "Naiad." Colors, Red and White Pennant.
 Elijah Ross enters his Sloop "British Queen." Colors, White Pennant.
- 2nd. FISHERMAN'S RACE.** — *Bona fide* Fishing Boats. Not less than 16 ft. keel. Distance, One Mile. 1st Prize, \$30; 2nd Prize, \$15. Entrance, \$2.
 Lee Brothers. Colors, White. Nehemiah Logan and Absalom Logan. Colors, Red.
 Fawcett Brothers. Colors, Blue.
- 3rd. PROFESSIONAL SINGLE SCULLS.** — Distance, Three Miles, with turn. 1st Prize, \$40; 2nd Prize, \$15. Entrance Fee, \$5.
 Wallace Ross. Colors, Blue. Richard J. Nagle. Colors, Red.
 Harry Vail. Colors, White. Edward Ross. Colors, Yellow.
 H. J. McCormick. Colors, Pink.
- 4th. AMATEUR SINGLE SCULLS.** — Distance, One Mile and a Half, with one turn. Prize, a Medal to Winner.
 Henry A. Logan. Colors, Red. George Dalton. Colors, Blue. William O'Hara. Colors, White.
- 5th. PROFESSIONAL FOUR OARS.** — Distance, Three Miles, with turn. Inrigged Boats. 1st Prize, \$150; 2nd Prize, \$50. Third Boat to save Entrance Fee. Entrance, \$5.
 G. Lord, Stroke; J. McLeod, Aft Mid.; W. W. Belyea, Fore Mid.; J. Lord, Bow — enter the "Jubilee Queen." Colors, White.
 Richard J. Nagle, Sylvester Gookin, Richard Gookin, Jeremiah Casey (Jubilee Crew). Colors, Blue.
 Harry Vail, Stroke; Absalom Logan, Aft Mid.; Edward Ross, Fore Mid.; Nehemiah Logan, Jr., Bow. Colors, Yellow.
 L. Sullivan, Stroke; John McGinnis, Aft Mid.; William Harnard, Fore Mid.; George Sullivan, Bow — enter their boat I. X. L. Colors, Red.
 George Price, Stroke; Thomas McLeod, Aft Mid.; Fred. Lord, Fore Mid.; Joseph Stackhouse, Bow — enter "Hattie Ross." Colors, Pink.
- 6th. AMATEUR FOUR OARS.** — Distance, Three Miles, with one turn. Inrigged Boats. Prize, a Medal to each Member of Winning Crew.
 William McShane, Stroke; Robert Nicholl, Aft Mid.; Thomas Whisted, Fore Mid.; Patrick Keefe, Bow — enter their boat "Clarence." Colors, Blue.
 Neptune Rowing Club enter a crew consisting of Messrs. Chas. Coster, T. Lantulum, J. V. Lantulum, Wm. Lantulum. Colors, Red.
- 7th. TWO-SAIL OPEN BOATS.** — 1st Prize, \$35; 2nd Prize, \$10; 3rd Prize, \$5. Entrance Fee, \$2.
 Henry Galbraith enters the "Brother's Pride." Colors, Small Ensign at main peak.
 Samuel Hutton enters "Custom House Boat." Colors, White at main peak.
 Thomas Burns enters the "Anonyma." Colors, Small Jack at main peak.
 Henry King enters the "General." Colors, Blue Pennant at main peak.
 This race to be sailed on completion of sloop race.
- 8th. CANOE RACE.** — Open to Indians only. Distance, One Mile, with turn. 1st Prize, \$10; 2nd Prize, \$6; 3rd Prize, \$3.
- 9th. LOG RACE.** — Across the Harbor. 1st Prize, \$5; 2nd Prize, \$2.50.

The course for the Sailing Races shall be from the starting point to and around a boat moored off Black Point, thence in a southwesterly direction to and around a boat moored to the southward and eastward of Partridge Island, thence back to starting point, keeping to the eastward of the Island. The Turning Buoys to be kept on starboard side of Yacht in rounding.

Course for Rowing Races to start from opposite Lawton's Wharf in a southerly direction, keeping inside the Beacon.

The Sailing Races will be under the Rules of the N. Y. Yacht Club, where applicable, the "sailing length" of the sloops being taken and time allowance given in accordance with authorized table.

The Rowing Races will be under Rules of National Amateur Rowing Association of the United States.

Special Regulations.

The different Races shall be numbered and known by their numbers.

The Races shall be called on in such order as the Umpire shall think most advantageous, by signals from the Umpire's steamer; but the order on the Programme will be adhered to as closely as possible.

The Code of Signals is as follows: A long whistle, to prepare; and then a number of whistles in succession, corresponding to the number of the race as laid down on the programme; e. g., one whistle for No. 1, two whistles with 10 seconds interval for No. 2, and so on. All boats to be in position within 10 minutes from time of sounding first whistle.

Races will be started by a gun fired from the Judges' boat. In case of false start, a second gun will be fired, which will be the signal for returning to position.

THE FOLLOWING ARE SOME OF THE MOST IMPORTANT

Rules Governing the Sailing Races.

The start shall be a flying one.

Yachts on port tack must invariably give way to yachts on starboard tack.

Yachts going free shall invariably give way for those by the wind on either tack.

If two yachts are meeting end on, or nearly end on, so as to involve risk of collision, the helms of both shall be put to port, so that each may pass on the port side of the other.

No yacht shall bear away out of her course to hinder another yacht from passing to leeward—the lee side to be considered that on which leading yacht is carrying her main-boom—unless when two yachts are approaching a windward shore or turning a buoy or mark, with a free wind, or so close to each other that the weathermost cannot bear away clear of the leewardmost and, by standing on, would be in danger of running ashore or touching such mark, then the leewardmost yacht, on being requested to bear away, shall immediately comply. The weathermost yacht must, however, bear away as soon as the one she hails, if she can do so without coming in contact.

No yacht shall be allowed to use any means of propulsion except sails.

When rounding a mark, the yacht nearest thereto is to be considered the leading yacht and entitled to the right of way, and should any other yacht in the race compel her to touch such mark, buoy, etc., the yacht so compelling her shall forfeit all claim to the prize, and the yacht so compelled to touch a mark, or buoy, etc., shall not suffer any penalty.

When two yachts (by the wind) are approaching the shore or a stake-boat, etc., together, and so close to each other that the leewardmost cannot tack clear of the weathermost, and by standing farther on would be in danger of running on shore, or touching a buoy or stake-boat, such weathermost yacht, on being requested to put about, shall immediately comply.

The leewardmost yacht must, however, tack at the same time as the one she hails, if she can do so without coming in contact. The decision of the judges shall in all cases be final.

Laws of Boat Racing.

The following are the *Rules* under which the jubilee races in St. John harbor will be rowed:

1. All boat races shall be started in the following manner. The starter, on being satisfied that the competitors are ready, shall give the signal to start.
2. If the starter considers the start false, he shall at once recall the boats to their stations, and any boat refusing to start again shall be disqualified.
3. Any boat not at its post at the time specified may be disqualified by the umpire.
4. The umpire may act as starter as he thinks fit. When he does not so act, the starter shall be subject to the control of the umpire.
5. Each boat shall keep its own water throughout the race, and any boat departing from its own water will do so at its peril.
6. A boat's own water is its straight course, parallel with those of the other competing boats, from the station assigned to it at the start to the finish.
7. The umpire shall be sole judge of a boat's own water and proper course during the race.
8. No fouling whatever shall be allowed; the boat committing a foul shall be disqualified.
9. It shall be considered a foul when, after the race has commenced, any competitor, by his oar, boat or person comes in contact with the oar, boat or person of another competitor, unless in the opinion of the umpire such contact is so slight as not to affect the race.
10. The umpire may, during a race, caution any competitor when in danger of committing a foul.
11. The umpire, when appealed to, shall decide all questions as to a foul.
12. A claim of foul must be made to the judge or umpire by the competitor himself before getting out of his boat.
13. In case of a foul the umpire shall have the power (a) to place the boats, excepting the boat committing the foul, which is disqualified, in the order in which they come in; (b) to order the boats engaged in the race, other than the boat committing the foul, to row over again on the same or another day; (c) to re-start the qualified boats from the place where the foul was committed.
14. Every boat shall abide by its accidents.
15. No boat shall be allowed to accompany a competitor for the purpose of directing his course or affording him other assistance. The boat receiving such direction or assistance shall be disqualified at the discretion of the umpire.
16. The jurisdiction of the umpire extends over the race, and all matters connected with it, from the time the race is specified to start until its final termination, and his decision in all cases shall be final and without appeal.
17. Any competitor refusing to abide by the decision or to follow the directions of the umpire shall be disqualified.
18. Boats shall be started by their sterns, and shall have completed their course when the bows reach the "finish."
19. In turning races each competitor shall have a separate turning stake and shall turn from port to starboard. Any competitor may turn any stake other than his own, but does so at his peril.
20. The umpire, if he thinks proper, may reserve his decision, provided that in every case such decision be given on the day of the race.



Regatta Committee.

A. CHIPMAN SMITH.
H. D. TROOP.
HON. D. McLELLAN.
C. N. SKINNER, M. P.
JOHN BERRYMAN, M. D., M. P. P.
THOMAS WALKER, M. D.
J. W. DANIEL, M. D.
W. H. THORNE.
GEORGE A. BARKER.
W. B. CARVILL.
W. E. VROOM.
ALDERMAN MORRISON.
ALDERMAN BELYEA.
GEORGE F. SMITH.

ALDERMAN T. W. PETERS.
ALDERMAN McGIVERN.
ALDERMAN DAVIS.
ROBERT FULTON.
ELIJAH ROSS.
SAMUEL HUTTON.
ALDERMAN MCCARTHY.
ALDERMAN EMERSON.
J. ALFRED CLARK.
ALDERMAN STACKHOUSE.
W. WATSON ALLEN.
M. H. GALLAGHER.
GEORGE PRICE.
THOMAS S. ADAMS.

A. CHIPMAN SMITH,
Chairman.

J. W. DANIEL, M. D.,
Secretary.

THOMAS WALKER, M. D.,
Umpire for Rowing Races.

THOMAS S. ADAMS,
Judge for Sailing Races.

MESSRS. D. C. CLINCH, GEORGE F. HARDING, FRED. J. HARDING,
Timekeepers.

ALDERMAN STACKHOUSE,
Official Measurer of Sloops.

J. & A. McMILLAN, PRINTERS.



